

BESIVANCE- besifloxacin suspension

Bausch & Lomb Americas Inc.

HIGHLIGHTS OF PRESCRIBING INFORMATION

These highlights do not include all the information needed to use BESIFLOXACIN OPHTHALMIC SUSPENSION safely and effectively. See full prescribing information for BESIFLOXACIN OPHTHALMIC SUSPENSION.

BESIFLOXACIN OPHTHALMIC SUSPENSION, for topical ophthalmic use

Initial U.S. Approval: 2009

INDICATIONS AND USAGE

Besifloxacin ophthalmic suspension 0.6% is a quinolone antimicrobial indicated for the treatment of bacterial conjunctivitis caused by susceptible isolates of the following bacteria:

*Aerococcus viridans**, CDC coryneform group G, *Corynebacterium pseudodiphtheriticum**, *Corynebacterium striatum**, *Haemophilus influenzae*, *Moraxella catarrhalis**, *Moraxella lacunata**, *Pseudomonas aeruginosa**, *Staphylococcus aureus*, *Staphylococcus epidermidis*, *Staphylococcus hominis**, *Staphylococcus lugdunensis**, *Staphylococcus warneri**, *Streptococcus mitis* group, *Streptococcus oralis*, *Streptococcus pneumoniae*, *Streptococcus salivarius**

*Efficacy for this organism was studied in fewer than 10 infections. (1)

DOSAGE AND ADMINISTRATION

Instill one drop in the affected eye(s) 3 times a day, 4 to 12 hours apart for 7 days. (2)

DOSAGE FORMS AND STRENGTHS

Ophthalmic suspension: besifloxacin 6 mg/mL (0.6%) (3)

CONTRAINDICATIONS

None. (4)

WARNINGS AND PRECAUTIONS

- Not for Injection into the Eye (5.1)
- Growth of Resistant Organisms with Prolonged Use (5.2)
- Avoidance of Contact Lenses: Patients should not wear contact lenses if they have signs or symptoms of bacterial conjunctivitis or during the course of therapy with besifloxacin ophthalmic suspension. (5.3)

ADVERSE REACTIONS

The most common adverse reaction reported in 2% of patients treated with besifloxacin ophthalmic suspension was conjunctival redness. (6)

To report SUSPECTED ADVERSE REACTIONS, contact Bausch & Lomb Incorporated at 1-800-553-5340 or FDA at 1-800-FDA-1088 or www.fda.gov/medwatch.

See 17 for PATIENT COUNSELING INFORMATION.

Revised: 1/2026

FULL PRESCRIBING INFORMATION: CONTENTS*

1 INDICATIONS AND USAGE

2 DOSAGE AND ADMINISTRATION

3 DOSAGE FORMS AND STRENGTHS

4 CONTRAINDICATIONS

5 WARNINGS AND PRECAUTIONS

5.2 Growth of Resistant Organisms with Prolonged Use

5.3 Avoidance of Contact Lenses

6 ADVERSE REACTIONS

8 USE IN SPECIFIC POPULATIONS

8.1 Pregnancy

- 8.2 Lactation
- 8.4 Pediatric Use
- 8.5 Geriatric Use

11 DESCRIPTION

12 CLINICAL PHARMACOLOGY

- 12.1 Mechanism of Action
- 12.3 Pharmacokinetics
- 12.4 Microbiology

13 NONCLINICAL TOXICOLOGY

- 13.1 Carcinogenesis, Mutagenesis, Impairment of Fertility

14 CLINICAL STUDIES

16 HOW SUPPLIED/STORAGE AND HANDLING

17 PATIENT COUNSELING INFORMATION

* Sections or subsections omitted from the full prescribing information are not listed.

FULL PRESCRIBING INFORMATION

1 INDICATIONS AND USAGE

Besifloxacin ophthalmic suspension 0.6% is indicated for the treatment of bacterial conjunctivitis caused by susceptible isolates of the following bacteria:

1. *Aerococcus viridans**
2. CDC coryneform group G
3. *Corynebacterium pseudodiphtheriticum**
4. *Corynebacterium striatum**
5. *Haemophilus influenzae*
6. *Moraxella catarrhalis**
7. *Moraxella lacunata**
8. *Pseudomonas aeruginosa**
9. *Staphylococcus aureus*
10. *Staphylococcus epidermidis*
11. *Staphylococcus hominis**
12. *Staphylococcus lugdunensis**
13. *Staphylococcus warneri**
14. *Streptococcus mitis* group
15. *Streptococcus oralis*
16. *Streptococcus pneumoniae*

*Streptococcus salivarius**

1. *Efficacy for this organism was studied in fewer than 10 infections.

2 DOSAGE AND ADMINISTRATION

Invert closed bottle and shake once before use. Instill one drop in the affected eye(s) 3 times a day, 4 to 12 hours apart for 7 days.

3 DOSAGE FORMS AND STRENGTHS

Ophthalmic suspension containing 6 mg/mL (0.6%) of besifloxacin.

4 CONTRAINDICATIONS

None.

5 WARNINGS AND PRECAUTIONS

5.1 Not for Injection into the Eye

5.2 Growth of Resistant Organisms with Prolonged Use

As with other anti-infectives, prolonged use of besifloxacin ophthalmic suspension 0.6% may result in overgrowth of non-susceptible organisms, including fungi. If super-infection occurs, discontinue use and institute alternative therapy. Whenever clinical judgment dictates, the patient should be examined with the aid of magnification, such as slit-lamp biomicroscopy, and, where appropriate, fluorescein staining.

5.3 Avoidance of Contact Lenses

Patients should not wear contact lenses if they have signs or symptoms of bacterial conjunctivitis or during the course of therapy with besifloxacin ophthalmic suspension.

6 ADVERSE REACTIONS

Because clinical trials are conducted under widely varying conditions, adverse reaction rates observed in the clinical trials of a drug cannot be directly compared to rates in the clinical trials of another drug and may not reflect the rates observed in clinical practice.

The data described below reflect exposure to besifloxacin ophthalmic suspension in approximately 1,000 patients between 1 and 98 years old with clinical signs and symptoms of bacterial conjunctivitis.

The most frequently reported ocular adverse reaction was conjunctival redness, reported in approximately 2% of patients.

Other adverse reactions reported in patients receiving besifloxacin ophthalmic suspension occurring in approximately 1-2% of patients included: blurred vision, eye pain, eye irritation, eye pruritus and headache.

8 USE IN SPECIFIC POPULATIONS

8.1 Pregnancy

Risk Summary

There are no available human data for the use of besifloxacin ophthalmic suspension during pregnancy to inform any drug-associated risks; however, systemic exposure to

besifloxacin from ocular administration is low [see *Clinical Pharmacology* (12.3)] .

Oral administration of besifloxacin to pregnant rats during organogenesis or during the prenatal and postnatal period did not produce adverse embryofetal or offspring effects at clinically relevant systemic exposures [see *Data*] .

Data

Animal Data

In an embryofetal development study in rats, the administration of besifloxacin at oral doses up to 1,000 mg/kg/day during organogenesis was not associated with visceral or skeletal malformations in rat fetuses, although this dose was associated with maternal toxicity (reduced body weight gain and food consumption) and maternal mortality. Increased post-implantation loss, decreased fetal body weights, and decreased fetal ossification were also observed. At this dose, the mean C_{max} in the rat dams was approximately 20 mcg/mL, approximately 46,500 times the mean plasma concentrations measured in humans at the recommended human ophthalmic dose (RHOD). The No Observed Adverse Effect Level (NOAEL) for this embryofetal development study was 100 mg/kg/day (C_{max} , 5 mcg/mL, approximately 11,600 times the mean plasma concentrations measured in humans at the RHOD).

In a prenatal and postnatal development study in rats, the NOAELs for both fetal/neonate and maternal toxicity were 100 mg/kg/day. At 1,000 mg/kg/day, pups weighed significantly less than controls and had a reduced neonatal survival rate. Attainment of developmental landmarks and sexual maturation was delayed, although surviving pups from this dose group that were reared to maturity did not demonstrate deficits in behavior, including activity, learning and memory, and their reproductive capacity appeared normal.

8.2 Lactation

Risk Summary

There are no data on the presence of besifloxacin ophthalmic suspension in human milk, the effects on the breastfed infant, or the effects on milk production. However, systemic exposure to besifloxacin following topical ocular administration is low [see *Clinical Pharmacology* (12.3)] , and it is not known whether measurable levels of besifloxacin would be present in maternal milk following topical ocular administration.

The developmental and health benefits of breastfeeding should be considered, along with the mother's clinical need for besifloxacin ophthalmic suspension, and any potential adverse effects on the breastfed infant from besifloxacin ophthalmic suspension.

8.4 Pediatric Use

The safety and effectiveness of besifloxacin ophthalmic suspension in infants below one year of age have not been established. The efficacy of besifloxacin ophthalmic suspension in treating bacterial conjunctivitis in pediatric patients one year or older has been demonstrated in controlled clinical trials [see *Clinical Studies* (14)].

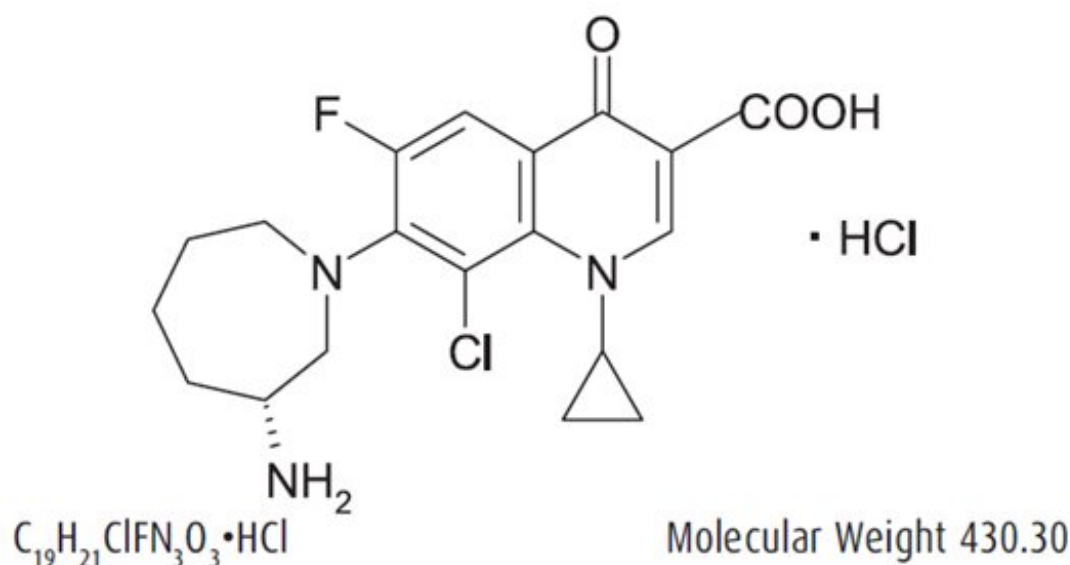
There is no evidence that the ophthalmic administration of quinolones has any effect on weight-bearing joints, even though systemic administration of some quinolones has been shown to cause arthropathy in immature animals.

8.5 Geriatric Use

No overall differences in safety and effectiveness have been observed between elderly and younger patients.

11 DESCRIPTION

Besifloxacin ophthalmic suspension 0.6% is a sterile ophthalmic suspension of besifloxacin formulated with DuraSite^{®†} (polycarbophil, edetate disodium dihydrate, sodium chloride, sodium hydroxide, and water for injection). Each mL of besifloxacin ophthalmic suspension contains 6.63 mg besifloxacin hydrochloride equivalent to 6 mg besifloxacin base. It is an 8-chloro fluoroquinolone anti-infective for topical ophthalmic use.



Chemical Name: (+)-7-[(3R)-3-aminohexahydro-1H-azepin-1-yl]-8-chloro-1-cyclopropyl-6-fluoro-4-oxo-1,4-dihydroquinoline-3-carboxylic acid hydrochloride.

Besifloxacin hydrochloride is a white to pale yellowish-white powder.

Each mL contains:

Active: besifloxacin 0.6% (6 mg/mL);

Inactives: polycarbophil, mannitol, poloxamer 407, sodium chloride, edetate disodium dihydrate, sodium hydroxide, and water for injection.

Preservative: benzalkonium chloride 0.01%

Besifloxacin ophthalmic suspension is an isotonic suspension with an osmolality of approximately 290 mOsm/kg.

12 CLINICAL PHARMACOLOGY

12.1 Mechanism of Action

Besifloxacin is a fluoroquinolone antibacterial [see *Microbiology* (12.4)] .

12.3 Pharmacokinetics

Plasma concentrations of besifloxacin were measured in adult patients with suspected bacterial conjunctivitis who received besifloxacin ophthalmic suspension bilaterally three times a day (16 doses total). Following the first and last dose, the maximum plasma besifloxacin concentration in each patient was less than 1.3 ng/mL. The mean besifloxacin C_{max} was 0.37 ng/mL on Day 1 and 0.43 ng/mL on Day 6. The average elimination half-life of besifloxacin in plasma following multiple dosing was estimated to be 7 hours.

12.4 Microbiology

Besifloxacin is an 8-chloro fluoroquinolone with an N-1 cyclopropyl group. The compound has activity against Gram-positive and Gram-negative bacteria due to the inhibition of both bacterial DNA gyrase and topoisomerase IV. DNA gyrase is an essential enzyme required for replication, transcription and repair of bacterial DNA. Topoisomerase IV is an essential enzyme required for partitioning of the chromosomal DNA during bacterial cell division. Besifloxacin is bactericidal with minimum bactericidal concentrations (MBCs) generally within one dilution of the minimum inhibitory concentrations (MICs).

The mechanism of action of fluoroquinolones, including besifloxacin, is different from that of aminoglycoside, macrolide, and β -lactam antibiotics. Therefore, besifloxacin may be active against pathogens that are resistant to these antibiotics and these antibiotics may be active against pathogens that are resistant to besifloxacin. In vitro studies demonstrated cross-resistance between besifloxacin and some fluoroquinolones.

In vitro resistance to besifloxacin develops via multiple-step mutations and occurs at a general frequency of $<3.3 \times 10^{-10}$ for *Staphylococcus aureus* and $<7 \times 10^{-10}$ for *Streptococcus pneumoniae*.

Besifloxacin has been shown to be active against most isolates of the following bacteria both in vitro and in conjunctival infections treated in clinical trials [see *Indications and Usage* (1)] :

1. *Aerococcus viridans**
2. CDC coryneform group G
3. *Corynebacterium pseudodiphtheriticum**
4. *Corynebacterium striatum**
5. *Haemophilus influenzae*
6. *Moraxella catarrhalis**
7. *Moraxella lacunata**
8. *Pseudomonas aeruginosa**
9. *Staphylococcus aureus*
10. *Staphylococcus epidermidis*
11. *Staphylococcus hominis**
12. *Staphylococcus lugdunensis**
13. *Staphylococcus warneri**
14. *Streptococcus mitis* group
15. *Streptococcus oralis*
16. *Streptococcus pneumoniae*

17. *Streptococcus salivarius**

18. *Efficacy for this organism was studied in fewer than 10 infections.

13 NONCLINICAL TOXICOLOGY

13.1 Carcinogenesis, Mutagenesis, Impairment of Fertility

Long-term studies in animals to determine the carcinogenic potential of besifloxacin have not been performed.

No in vitro mutagenic activity of besifloxacin was observed in an Ames test (up to 3.33 mcg/plate) on bacterial tester strains *Salmonella typhimurium* TA98, TA100, TA1535, TA1537 and *Escherichia coli* WP2uvrA. However, it was mutagenic in *S. typhimurium* strain TA102 and *E. coli* strain WP2 (pKM101). Positive responses in these strains have been observed with other quinolones and are likely related to topoisomerase inhibition.

Besifloxacin induced chromosomal aberrations in CHO cells in vitro and it was positive in an in vivo mouse micronucleus assay at oral doses $\geq 1,500$ mg/kg. Besifloxacin did not induce unscheduled DNA synthesis in hepatocytes cultured from rats given the test compound up to 2,000 mg/kg by the oral route.

In a fertility and early embryonic development study in rats, besifloxacin did not impair the fertility of male or female rats at oral doses of up to 500 mg/kg/day. This dose is approximately 26,500 times higher than the mean plasma concentration measured in humans at the recommended human ophthalmic dose.

14 CLINICAL STUDIES

In a randomized, double-masked, vehicle-controlled, multicenter clinical trial, in which patients 1-98 years of age were dosed 3 times a day for 5 days, besifloxacin ophthalmic suspension was superior to its vehicle in patients with bacterial conjunctivitis. Clinical resolution was achieved in 45% (90/198) for the besifloxacin ophthalmic suspension-treated group versus 33% (63/191) for the vehicle-treated group (difference 12%, 95% CI 3% - 22%). Microbiological outcomes demonstrated a statistically significant eradication rate for causative pathogens of 91% (181/198) for the besifloxacin ophthalmic suspension-treated group versus 60% (114/191) for the vehicle-treated group (difference 31%, 95% CI 23% - 40%). Microbiologic eradication does not always correlate with clinical outcome in anti-infective trials.

16 HOW SUPPLIED/STORAGE AND HANDLING

Besifloxacin ophthalmic suspension 0.6% is supplied as a sterile ophthalmic suspension in a white low density polyethylene (LDPE) bottle with a controlled dropper tip and beige polypropylene cap. Tamper evidence is provided with a shrink band around the cap and neck area of the package.

NDC 82260-466-05 5 mL in 7.5 mL bottle

Storage:

Store at 15°C to 25°C (59°F to 77°F). Protect from light.

17 PATIENT COUNSELING INFORMATION

Handling the Container

Advise patients to avoid contaminating the applicator tip with material from the eye, fingers or other source.

Use with Contact Lenses

Advise patients not to wear contact lenses if they have signs or symptoms of bacterial conjunctivitis or during the course of therapy with besifloxacin ophthalmic suspension.

Dosing Instructions

Patients should be instructed to invert closed bottle (upside down) and shake once before each use.

Distributed by:

Bausch & Lomb Americas Inc.

Bridgewater, NJ 08807 USA

Manufactured by:

Bausch & Lomb Incorporated

Tampa, FL 33637 USA

Patented. See <https://patents.bausch.com> for US patent information.

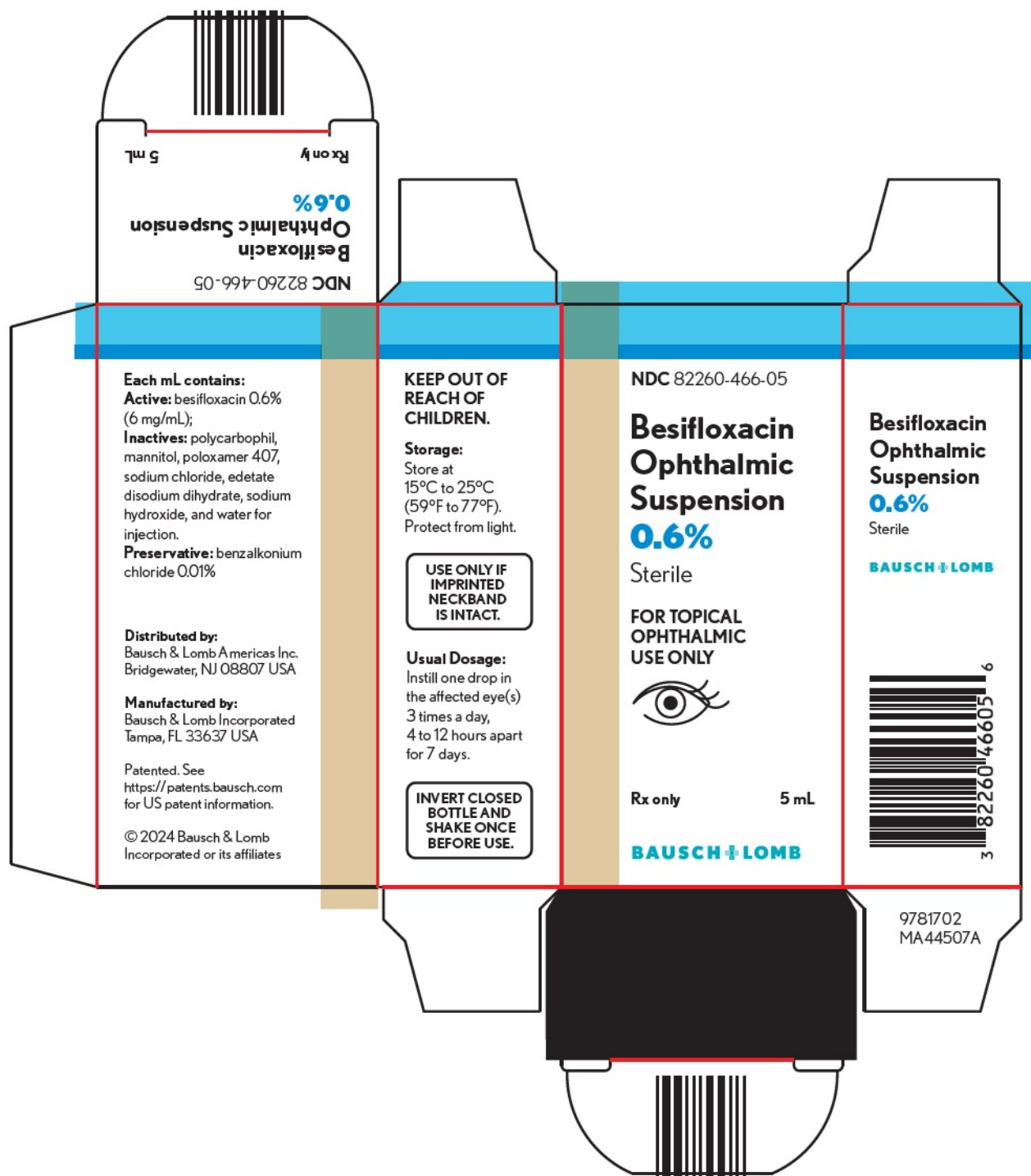
†DuraSite is a trademark of Sun Pharma Global FZE.

© 2022 Bausch & Lomb Incorporated or its affiliates

9781800 (folded)

9781900 (flat)

PACKAGE/LABEL PRINCIPAL DISPLAY PANEL



NDC82260-446-05

Besivance

Ophthalmic

Suspension

0.6%

Sterile

FOR TOPICAL

OPHTHALMIC
USE ONLY

(eye image)

Rx only 5 mL

BAUSCH + LOMB

9781702

MA44507A

BESIVANCE					
besifloxacin suspension					
Product Information					
Product Type		HUMAN PRESCRIPTION DRUG	Item Code (Source)		NDC:82260-446
Route of Administration		OPHTHALMIC			
Active Ingredient/Active Moiety					
Ingredient Name			Basis of Strength		Strength
BESIFLOXACIN (UNII: BFE2NBZ 7NX) (BESIFLOXACIN - UNII:BFE2NBZ 7NX)			BESIFLOXACIN		6 mg in 1 mL
Inactive Ingredients					
Ingredient Name				Strength	
BENZALKONIUM CHLORIDE (UNII: F5UM2KM3W7)					
POLYCARBOPHIL (UNII: W25LM17A4W)					
MANNITOL (UNII: 3OWL53L36A)					
POLOXAMER 407 (UNII: TUF2IVW3M2)					
SODIUM CHLORIDE (UNII: 451W47IQ8X)					
EDETATE DISODIUM (UNII: 7FLD91C86K)					
SODIUM HYDROXIDE (UNII: 55X04QC32I)					
WATER (UNII: 059QF0KO0R)					
Packaging					
#	Item Code	Package Description	Marketing Start Date	Marketing End Date	
1	NDC:82260-446-05	1 in 1 CARTON	01/09/2026		
1		5 mL in 1 BOTTLE, DROPPER; Type 0: Not a Combination Product			
Marketing Information					
Marketing Category		Application Number or Monograph Citation	Marketing Start Date	Marketing End Date	

NDA	NDA022308	01/09/2026	
-----	-----------	------------	--

Labeler - Bausch & Lomb Americas Inc. (118287629)

Establishment

Name	Address	ID/FEI	Business Operations
Bausch & Lomb Incorporated		079587625	manufacture(82260-446)

Revised: 1/2026

Bausch & Lomb Americas Inc.