

# TEMSIROLIMUS- temsirolimus injection

## Almject, Inc.

-----

### HIGHLIGHTS OF PRESCRIBING INFORMATION

**These highlights do not include all the information needed to use TEMSIROLIMUS INJECTION safely and effectively. See full prescribing information for TEMSIROLIMUS INJECTION.**

**TEMSIROLIMUS injection, for intravenous use**  
**Initial U.S. Approval: 2007**

#### ----- INDICATIONS AND USAGE -----

Temsirolimus injection is a kinase inhibitor indicated for the treatment of advanced renal cell carcinoma. (1)

#### ----- DOSAGE AND ADMINISTRATION -----

- The recommended dose of temsirolimus injection is 25 mg administered as an intravenous infusion over a 30-60 minute period once a week. Treat until disease progression or unacceptable toxicity. (2.1)
- Antihistamine pre-treatment is recommended. (2.2)
- Dose reduction is required in patients with mild hepatic impairment. (2.4)
- Temsirolimus injection vial contents must first be diluted with the enclosed diluent before diluting the resultant solution with 250 mL of 0.9% Sodium Chloride Injection. (2.5)

#### ----- DOSAGE FORMS AND STRENGTHS -----

Temsirolimus injection, 25 mg/mL supplied with DILUENT for temsirolimus injection. (3)

#### ----- CONTRAINDICATIONS -----

Temsirolimus injection is contraindicated in patients with bilirubin >1.5 x ULN. (4)

#### ----- WARNINGS AND PRECAUTIONS -----

- Hypersensitivity/Infusion Reactions (including some life-threatening and rare fatal reactions) can occur early in the first infusion of temsirolimus injection. Patients should be monitored throughout the infusion. (5.1)
- To treat hypersensitivity reactions, stop temsirolimus injection and treat with an antihistamine. Temsirolimus injection may be restarted at physician discretion at a slower rate. (5.1)
- Hepatic Impairment: Use caution when treating patients with mild hepatic impairment and reduce dose. (2.4, 5.2)
- Hyperglycemia and hyperlipidemia are likely and may require treatment. Monitor glucose and lipid profiles. (5.3, 5.6)
- Infections may result from immunosuppression. (5.4)
- Monitor for symptoms or radiographic changes of interstitial lung disease (ILD). If ILD is suspected, discontinue temsirolimus injection, and consider use of corticosteroids and/or antibiotics. (5.5)
- Bowel perforation may occur. Evaluate fever, abdominal pain, bloody stools, and/or acute abdomen promptly. (5.7)
- Renal failure, sometimes fatal, has occurred. Monitor renal function at baseline and while on temsirolimus injection. (5.8)
- Due to abnormal wound healing, use temsirolimus injection with caution in the perioperative period. (5.9)
- Proteinuria and nephrotic syndrome may occur. Monitor urine protein prior to the start of temsirolimus injection therapy and periodically thereafter. Discontinue temsirolimus injection in patients with who develop nephrotic syndrome. (5.11)
- Live vaccinations and close contact with those who received live vaccines should be avoided. (5.14)
- Embryo-Fetal Toxicity: Can cause fetal harm. Advise patients of the potential hazard to the fetus and to use effective contraception. (5.15, 8.1, 8.3)
- Elderly patients may be more likely to experience certain adverse reactions, including diarrhea, edema and pneumonia. (5.16)

#### ----- ADVERSE REACTIONS -----

The most common adverse reactions (incidence  $\geq 30\%$ ) are rash, asthenia, mucositis, nausea, edema, and anorexia. The most common laboratory abnormalities (incidence  $\geq 30\%$ ) are anemia, hyperglycemia, hyperlipidemia, hypertriglyceridemia, elevated alkaline phosphatase, elevated serum creatinine, lymphopenia, hypophosphatemia, thrombocytopenia, elevated AST, and leukopenia. (6)

**To report SUSPECTED ADVERSE REACTIONS, contact Almject, Inc. at 1-866-770-3024 or FDA at 1-800-FDA-1088 or [www.fda.gov/medwatch](http://www.fda.gov/medwatch)**

#### ----- DRUG INTERACTIONS -----

Strong inducers of CYP3A4/5 and inhibitors of CYP3A4 may affect concentrations of the primary metabolite of temsirolimus injection. If alternatives cannot be used, dose modifications of temsirolimus injection are recommended. (7.1, 7.2, 7.3)

Lactation: Do not breastfeed. (8.2)

See 17 for PATIENT COUNSELING INFORMATION.

Revised: 8/2019

---

**FULL PRESCRIBING INFORMATION: CONTENTS\***

**1 INDICATIONS AND USAGE**

**2 DOSAGE AND ADMINISTRATION**

- 2.1 Advanced Renal Cell Carcinoma
- 2.2 Premedication
- 2.3 Dosage Interruption/Adjustment
- 2.4 Dose Modification Guidelines
- 2.5 Instructions for Preparation
- 2.6 Administration

**3 DOSAGE FORMS AND STRENGTHS**

**4 CONTRAINDICATIONS**

**5 WARNINGS AND PRECAUTIONS**

- 5.1 Hypersensitivity/Infusion Reactions
- 5.2 Hepatic Impairment
- 5.3 Hyperglycemia/Glucose Intolerance
- 5.4 Infections
- 5.5 Interstitial Lung Disease
- 5.6 Hyperlipidemia
- 5.7 Bowel Perforation
- 5.8 Renal Failure
- 5.9 Wound Healing Complications
- 5.10 Intracerebral Hemorrhage
- 5.11 Proteinuria and Nephrotic syndrome
- 5.12 Co-administration with Inducers or Inhibitors of CYP3A Metabolism
- 5.13 Concomitant use of Temsirolimus with Sunitinib
- 5.14 Vaccinations
- 5.15 Embryo-Fetal Toxicity
- 5.16 Elderly Patients

**6 ADVERSE REACTIONS**

- 6.1 Clinical Trials Experience
- 6.2 Post-marketing and Other Clinical Experience

**7 DRUG INTERACTIONS**

- 7.1 Agents Inducing CYP3A Metabolism
- 7.2 Agents Inhibiting CYP3A Metabolism
- 7.3 Angioedema with ACE inhibitors and Calcium Channel Blockers

**8 USE IN SPECIFIC POPULATIONS**

- 8.1 Pregnancy
- 8.2 Lactation
- 8.3 Females and Males of Reproductive Potential
- 8.4 Pediatric Use
- 8.5 Geriatric Use
- 8.6 Renal Impairment
- 8.7 Hepatic Impairment

**10 OVERDOSAGE**

**11 DESCRIPTION**

## 12 CLINICAL PHARMACOLOGY

12.1 Mechanism of Action

12.2 Pharmacodynamics

12.3 Pharmacokinetics

## 13 NONCLINICAL TOXICOLOGY

13.1 Carcinogenesis, Mutagenesis, Impairment of Fertility

## 14 CLINICAL STUDIES

## 15 REFERENCES

## 16 HOW SUPPLIED/STORAGE AND HANDLING

## 17 PATIENT COUNSELING INFORMATION

\* Sections or subsections omitted from the full prescribing information are not listed.

---

## FULL PRESCRIBING INFORMATION

### 1 INDICATIONS AND USAGE

Temsirolimus injection is indicated for the treatment of advanced renal cell carcinoma.

### 2 DOSAGE AND ADMINISTRATION

#### 2.1 Advanced Renal Cell Carcinoma

The recommended dose of temsirolimus injection for advanced renal cell carcinoma is 25 mg administered as an intravenous infusion over a 30-60 minute period once a week.

Treatment should continue until disease progression or unacceptable toxicity occurs.

#### 2.2 Premedication

Patients should receive prophylactic intravenous diphenhydramine 25 to 50 mg (or similar antihistamine) approximately 30 minutes before the start of each dose of temsirolimus injection [*see Warnings and Precautions (5.1)*].

#### 2.3 Dosage Interruption/Adjustment

Temsirolimus injection should be held for absolute neutrophil count (ANC)  $<1,000/\text{mm}^3$ , platelet count  $<75,000/\text{mm}^3$ , or NCI CTCAE grade 3 or greater adverse reactions. Once toxicities have resolved to grade 2 or less, temsirolimus injection may be restarted with the dose reduced by 5 mg/week to a dose no lower than 15 mg/week.

#### 2.4 Dose Modification Guidelines

**Hepatic Impairment:** Use caution when treating patients with hepatic impairment. If temsirolimus injection must be given in patients with mild hepatic impairment (bilirubin  $>1 - 1.5 \times \text{ULN}$  or AST  $>\text{ULN}$  but bilirubin  $\leq \text{ULN}$ ), reduce the dose of temsirolimus injection to 15 mg/week. Temsirolimus injection is contraindicated in patients with bilirubin  $>1.5 \times \text{ULN}$  [*see Contraindications (4), Warnings and Precautions (5.2) and Use in Specific Populations (8.7)*].

**Concomitant Strong CYP3A4 Inhibitors:** The concomitant use of strong CYP3A4 inhibitors should be avoided (e.g. ketoconazole, itraconazole, clarithromycin, atazanavir, indinavir, nefazodone, nelfinavir, ritonavir, saquinavir, telithromycin, and voriconazole). Grapefruit juice may also increase plasma concentrations of sirolimus (a major metabolite of temsirolimus) and should be avoided. If patients must be co-administered a strong CYP3A4 inhibitor, based on pharmacokinetic studies, a temsirolimus

injection dose reduction to 12.5 mg/week should be considered. This dose of temsirolimus injection is predicted to adjust the AUC to the range observed without inhibitors. However, there are no clinical data with this dose adjustment in patients receiving strong CYP3A4 inhibitors. If the strong inhibitor is discontinued, a washout period of approximately 1 week should be allowed before the temsirolimus injection dose is adjusted back to the dose used prior to initiation of the strong CYP3A4 inhibitor [see *Warnings and Precautions (5.12) and Drug Interactions (7.2)*].

**Concomitant Strong CYP3A4 Inducers:** The use of concomitant strong CYP3A4 inducers should be avoided (e.g. dexamethasone, phenytoin, carbamazepine, rifampin, rifabutin, rifampicin, phenobarbital). If patients must be co-administered a strong CYP3A4 inducer, based on pharmacokinetic studies, a temsirolimus injection dose increase from 25 mg/week up to 50 mg/week should be considered. This dose of temsirolimus injection is predicted to adjust the AUC to the range observed without inducers. However, there are no clinical data with this dose adjustment in patients receiving strong CYP3A4 inducers. If the strong inducer is discontinued the temsirolimus dose should be returned to the dose used prior to initiation of the strong CYP3A4 inducer [see *Warnings and Precautions (5.12) and Drug Interactions (7.1)*].

## 2.5 Instructions for Preparation

Temsirolimus injection is a cytotoxic drug. Follow applicable special handling and disposal procedures<sup>1</sup>.

Temsirolimus injection must be stored under refrigeration at 2° to 8°C (36° to 46°F) and protected from light. During handling and preparation of admixtures, temsirolimus injection should be protected from excessive room light and sunlight. Parenteral drug products should be inspected visually for particulate matter and discoloration prior to administration, whenever solution and container permit.

In order to minimize the patient exposure to the plasticizer DEHP (di-2-ethylhexyl phthalate), which may be leached from PVC infusion bags or sets, the final temsirolimus injection dilution for infusion should be stored in bottles (glass, polypropylene) or plastic bags (polypropylene, polyolefin) and administered through polyethylene-lined administration sets.

Temsirolimus injection 25 mg/mL must be diluted with the supplied diluent before further dilution in 0.9% Sodium Chloride Injection, USP.

Please note that both the temsirolimus injection and diluent vials contain an overfill to ensure the recommended volume can be withdrawn.

Follow this two-step dilution process in an aseptic manner.

Step 1:

### DILUTION OF TEMSIROLIMUS INJECTION 25 MG/ML WITH SUPPLIED DILUENT

- Each vial of temsirolimus injection must first be mixed with 1.8 mL of the enclosed diluent. The resultant solution contains 30 mg/3 mL (10 mg/mL).
- Mix well by inversion of the vial. Allow sufficient time for the air bubbles to subside. The solution should be clear to slightly turbid, colorless to light-yellow solution, essentially free from visual particulates.

The concentrate-diluent mixture is stable below 25°C for up to 24 hours.

Step 2:

### DILUTION OF CONCENTRATE-DILUENT MIXTURE WITH 0.9% SODIUM CHLORIDE INJECTION, USP

- Withdraw precisely the required amount of concentrate-diluent mixture containing temsirolimus 10 mg/mL as prepared in Step 1 from the vial (i.e., 2.5 mL for a temsirolimus dose of 25 mg) and further dilute into an infusion bag containing 250 mL of 0.9% Sodium Chloride Injection, USP.
- Mix by inversion of the bag or bottle, avoiding excessive shaking, as this may cause foaming.

The resulting solution should be inspected visually for particulate matter and discoloration prior to administration. The admixture of temsirolimus injection in 0.9% Sodium Chloride Injection, USP should be protected from excessive room light and sunlight.

## 2.6 Administration

- Administration of the final diluted solution should be completed within six hours from the time that temsirolimus injection is first added to 0.9% Sodium Chloride Injection, USP.
- Temsirolimus injection is administered as an intravenous infusion over a 30- to 60-minute period once weekly. The use of an infusion pump is the preferred method of administration to ensure accurate delivery of the product.
- Appropriate administration materials should be composed of glass, polyolefin, or polyethylene to avoid excessive loss of product and diethylhexylphthalate (DEHP) extraction. The administration materials should consist of non-DEHP, non-polyvinylchloride (PVC) tubing with appropriate filter. In the case when a PVC administration set has to be used, it should not contain DEHP. An in-line polyethersulfone filter with a pore size of not greater than 5 microns is recommended for administration to avoid the possibility of particles bigger than 5 microns being infused. If the administration set available does not have an in-line filter incorporated, a polyethersulfone filter should be added at the set (i.e., an end-filter) before the admixture reaches the vein of the patient. Different end-filters can be used, ranging in filter pore size from 0.2 microns up to 5 microns. The use of both an in-line and end-filter is not recommended.
- Temsirolimus injection, when diluted, contains polysorbate 80, which is known to increase the rate of DEHP extraction from PVC. This should be considered during the preparation and administration of temsirolimus injection, including storage time elapsed when in direct contact with PVC following constitution.

## Compatibilities and Incompatibilities

Undiluted temsirolimus injection should not be added directly to aqueous infusion solutions. Direct addition of temsirolimus injection to aqueous solutions will result in precipitation of drug. Always combine temsirolimus injection with DILUENT for temsirolimus injection before adding to infusion solutions. It is recommended that temsirolimus injection be administered in 0.9% Sodium Chloride Injection after combining with diluent. The stability of temsirolimus injection in other infusion solutions has not been evaluated. Addition of other drugs or nutritional agents to admixtures of temsirolimus injection in 0.9% Sodium Chloride Injection has not been evaluated and should be avoided. Temsirolimus is degraded by both acids and bases, and thus combinations of temsirolimus with agents capable of modifying solution pH should be avoided.

## 3 DOSAGE FORMS AND STRENGTHS

Temsirolimus injection is supplied as a kit consisting of the following:

Temsirolimus injection (25 mg/mL). The temsirolimus injection vial contains temsirolimus at a concentration of 25 mg/mL. The vial contains an overfill of 0.2 mL to ensure the ability to withdraw the recommended dose.

DILUENT for temsirolimus injection. The DILUENT vial includes a deliverable volume of 1.8 mL. This vial contains an overfill in order to ensure that the appropriate volume can be withdrawn.

## 4 CONTRAINDICATIONS

Temsirolimus injection is contraindicated in patients with bilirubin  $>1.5 \times \text{ULN}$  [*see Warnings and Precautions (5.2)*].

## 5 WARNINGS AND PRECAUTIONS

### 5.1 Hypersensitivity/Infusion Reactions

Hypersensitivity/infusion reactions, including but not limited to flushing, chest pain, dyspnea, hypotension, apnea, loss of consciousness, hypersensitivity and anaphylaxis, have been associated with the administration of temsirolimus. These reactions can occur very early in the first infusion, but may also occur with subsequent infusions. Patients should be monitored throughout the infusion and appropriate supportive care should be available. Temsirolimus infusion should be interrupted in all patients with severe infusion reactions and appropriate medical therapy administered.

Temsirolimus injection should be used with caution in persons with known hypersensitivity to temsirolimus or its metabolites (including sirolimus), polysorbate 80, or to any other component (including the excipients) of temsirolimus injection.

An H<sub>1</sub> antihistamine should be administered to patients before the start of the intravenous temsirolimus infusion. Temsirolimus injection should be used with caution in patients with known hypersensitivity to an antihistamine, or patients who cannot receive an antihistamine for other medical reasons.

If a patient develops a hypersensitivity reaction during the temsirolimus injection infusion, the infusion should be stopped and the patient should be observed for at least 30 to 60 minutes (depending on the severity of the reaction). At the discretion of the physician, treatment may be resumed with the administration of an H<sub>1</sub>-receptor antagonist (such as diphenhydramine), if not previously administered [see *Dosage and Administration (2.2)*], and/or an H<sub>2</sub>-receptor antagonist (such as intravenous famotidine 20 mg or intravenous ranitidine 50 mg) approximately 30 minutes before restarting the temsirolimus injection infusion. The infusion may then be resumed at a slower rate (up to 60 minutes).

A benefit-risk assessment should be done prior to the continuation of temsirolimus therapy in patients with severe or life-threatening reactions.

### 5.2 Hepatic Impairment

The safety and pharmacokinetics of temsirolimus injection were evaluated in a dose escalation phase 1 study in 110 patients with normal or varying degrees of hepatic impairment. Patients with baseline bilirubin >1.5xULN experienced greater toxicity than patients with baseline bilirubin ≤1.5xULN when treated with temsirolimus injection. The overall frequency of ≥ grade 3 adverse reactions and deaths, including deaths due to progressive disease, were greater in patients with baseline bilirubin >1.5xULN due to increased risk of death [see *Contraindications (4)*].

Use caution when treating patients with mild hepatic impairment. Concentrations of temsirolimus and its metabolite sirolimus were increased in patients with elevated AST or bilirubin levels. If temsirolimus injection must be given in patients with mild hepatic impairment (bilirubin >1 – 1.5xULN or AST >ULN but bilirubin ≤ULN), reduce the dose of temsirolimus injection to 15 mg/week [see *Dosage and Administration (2.4)*].

### 5.3 Hyperglycemia/Glucose Intolerance

The use of temsirolimus injection is likely to result in increases in serum glucose. In the phase 3 trial, 89% of patients receiving temsirolimus injection had at least one elevated serum glucose while on treatment, and 26% of patients reported hyperglycemia as an adverse event. This may result in the need for an increase in the dose of, or initiation of, insulin and/or oral hypoglycemic agent therapy. Serum glucose should be tested before and during treatment with temsirolimus injection. Patients should be advised to report excessive thirst or any increase in the volume or frequency of urination.

### 5.4 Infections

The use of temsirolimus injection may result in immunosuppression. Patients should be carefully observed for the occurrence of infections, including opportunistic infections [see *Adverse Reactions*

(6.1)].

Pneumocystis jiroveci pneumonia (PJP), including fatalities, has been reported in patients who received temsirolimus. This may be associated with concomitant use of corticosteroids or other immunosuppressive agents. Prophylaxis of PJP should be considered when concomitant use of corticosteroids or other immunosuppressive agents are required.

### **5.5 Interstitial Lung Disease**

Cases of interstitial lung disease, some resulting in death, occurred in patients who received temsirolimus injection. Some patients were asymptomatic, or had minimal symptoms, with infiltrates detected on computed tomography scan or chest radiograph. Others presented with symptoms such as dyspnea, cough, hypoxia, and fever. Some patients required discontinuation of temsirolimus injection and/or treatment with corticosteroids and/or antibiotics, while some patients continued treatment without additional intervention. Patients should be advised to report promptly any new or worsening respiratory symptoms.

It is recommended that patients undergo baseline radiographic assessment by lung computed tomography scan or chest radiograph prior to the initiation of temsirolimus injection therapy. Follow such assessments periodically, even in the absence of clinical respiratory symptoms.

It is recommended that patients be followed closely for occurrence of clinical respiratory symptoms. If clinically significant respiratory symptoms develop, consider withholding temsirolimus injection administration until after recovery of symptoms and improvement of radiographic findings related to pneumonitis. Empiric treatment with corticosteroids and/or antibiotics may be considered. Opportunistic infections such as PJP should be considered in the differential diagnosis. For patients who require use of corticosteroids, prophylaxis of PJP may be considered.

### **5.6 Hyperlipidemia**

The use of temsirolimus injection is likely to result in increases in serum triglycerides and cholesterol. In the phase 3 trial, 87% of patients receiving temsirolimus injection had at least one elevated serum cholesterol value and 83% had at least one elevated serum triglyceride value. This may require initiation, or increase in the dose, of lipid-lowering agents. Serum cholesterol and triglycerides should be tested before and during treatment with temsirolimus injection.

### **5.7 Bowel Perforation**

Cases of fatal bowel perforation occurred in patients who received temsirolimus injection. These patients presented with fever, abdominal pain, metabolic acidosis, bloody stools, diarrhea, and/or acute abdomen. Patients should be advised to report promptly any new or worsening abdominal pain or blood in their stools.

### **5.8 Renal Failure**

Cases of rapidly progressive and sometimes fatal acute renal failure not clearly related to disease progression occurred in patients who received temsirolimus injection. Some of these cases were not responsive to dialysis.

### **5.9 Wound Healing Complications**

Use of temsirolimus injection has been associated with abnormal wound healing. Therefore, caution should be exercised with the use of temsirolimus injection in the perioperative period.

### **5.10 Intracerebral Hemorrhage**

Patients with central nervous system tumors (primary CNS tumor or metastases) and/or receiving anticoagulation therapy may be at an increased risk of developing intracerebral bleeding (including fatal outcomes) while receiving temsirolimus injection.

### **5.11 Proteinuria and Nephrotic syndrome**

Proteinuria (including cases of nephrotic syndrome) has occurred in patients treated with temsirolimus injection. Monitor urine protein prior to the start of temsirolimus injection therapy and periodically thereafter. Discontinue temsirolimus injection in patients who develop nephrotic syndrome.

### **5.12 Co-administration with Inducers or Inhibitors of CYP3A Metabolism**

Agents Inducing CYP3A Metabolism:

Strong inducers of CYP3A4/5 such as dexamethasone, carbamazepine, phenytoin, phenobarbital, rifampin, rifabutin, and rifampacin may decrease exposure of the active metabolite, sirolimus. If alternative treatment cannot be administered, a dose adjustment should be considered. St. John's Wort may decrease temsirolimus injection plasma concentrations unpredictably. Patients receiving temsirolimus injection should not take St. John's Wort concomitantly [*see Dosage and Administration (2.4) and Drug Interactions (7.1)*].

Agents Inhibiting CYP3A Metabolism:

Strong CYP3A4 inhibitors such as atazanavir, clarithromycin, indinavir, itraconazole, ketoconazole, nefazodone, nelfinavir, ritonavir, saquinavir, and telithromycin may increase blood concentrations of the active metabolite sirolimus. If alternative treatments cannot be administered, a dose adjustment should be considered [*see Dosage and Administration (2.4) and Drug Interactions (7.2)*].

### **5.13 Concomitant use of Temsirolimus with Sunitinib**

The combination of temsirolimus injection and sunitinib resulted in dose-limiting toxicity. Dose-limiting toxicities (Grade 3/4 erythematous maculopapular rash, and gout/cellulitis requiring hospitalization) were observed in two out of three patients treated in the first cohort of a phase 1 study at doses of temsirolimus injection 15 mg IV per week and sunitinib 25 mg oral per day (Days 1-28 followed by a 2-week rest).

### **5.14 Vaccinations**

The use of live vaccines and close contact with those who have received live vaccines should be avoided during treatment with temsirolimus injection. Examples of live vaccines are: intranasal influenza, measles, mumps, rubella, oral polio, BCG, yellow fever, varicella, and TY21a typhoid vaccines.

### **5.15 Embryo-Fetal Toxicity**

Based on findings in animal studies and its mechanism of action, temsirolimus injection can cause fetal harm when administered to a pregnant woman. In animal reproduction studies, daily oral administration of temsirolimus to pregnant animals during organogenesis caused adverse embryo-fetal effects in rats and rabbits at approximately 0.04 and 0.12 times the AUC in patients at the recommended human dose, respectively. Advise pregnant women and females of reproductive potential of the potential risk to a fetus. Advise females of reproductive potential to use effective contraception during treatment with temsirolimus injection and for 3 months after the last dose. Advise males with female partners of reproductive potential to use effective contraception during treatment with temsirolimus injection and for 3 months after the last dose [*see Clinical Pharmacology (12.1) and Use in Specific Populations (8.1, 8.3)*].

### **5.16 Elderly Patients**

Based on the results of a phase 3 study, elderly patients may be more likely to experience certain adverse reactions including diarrhea, edema and pneumonia [*see Use in Specific Populations (8.5)*].



## 6 ADVERSE REACTIONS

The following serious adverse reactions have been associated with temsirolimus injection in clinical trials and are discussed in greater detail in other sections of the label [see *Warnings and Precautions (5)*].

- Hypersensitivity/Infusion Reactions [see *Warnings and Precautions (5.1)*]
- Hepatic Impairment [see *Warnings and Precautions (5.2)*]
- Hyperglycemia/Glucose Intolerance [see *Warnings and Precautions (5.3)*]
- Infections [see *Warnings and Precautions (5.4)*]
- Interstitial Lung Disease [see *Warnings and Precautions (5.5)*]
- Hyperlipidemia [see *Warnings and Precautions (5.6)*]
- Bowel Perforation [see *Warnings and Precautions (5.7)*]
- Renal Failure [see *Warnings and Precautions (5.8)*]
- Wound Healing Complications [see *Warnings and Precautions (5.9)*]
- Intracerebral Hemorrhage [see *Warnings and Precautions (5.10)*]

The most common ( $\geq 30\%$ ) adverse reactions observed with temsirolimus injection are rash, asthenia, mucositis, nausea, edema, and anorexia. The most common ( $\geq 30\%$ ) laboratory abnormalities observed with temsirolimus injection are anemia, hyperglycemia, hyperlipidemia, hypertriglyceridemia, lymphopenia, elevated alkaline phosphatase, elevated serum creatinine, hypophosphatemia, thrombocytopenia, elevated AST, and leukopenia.

### 6.1 Clinical Trials Experience

Because clinical trials are conducted under widely varying conditions, the adverse reaction rates observed cannot be directly compared to rates in other trials and may not reflect the rates observed in clinical practice.

In the phase 3 randomized, open-label study of interferon alfa (IFN- $\alpha$ ) alone, temsirolimus injection alone, and temsirolimus injection and IFN- $\alpha$ , a total of 616 patients were treated. Two hundred patients received IFN- $\alpha$  weekly, 208 received temsirolimus injection 25 mg weekly, and 208 patients received a combination of temsirolimus injection and IFN- $\alpha$  weekly [see *Clinical Studies (14)*].

Treatment with the combination of temsirolimus injection 15 mg and IFN- $\alpha$  was associated with an increased incidence of multiple adverse reactions and did not result in a significant increase in overall survival when compared with IFN- $\alpha$  alone.

Table 1 shows the percentage of patients experiencing treatment emergent adverse reactions. Reactions reported in at least 10% of patients who received temsirolimus injection 25 mg alone or IFN- $\alpha$  alone are listed. Table 2 shows the percentage of patients experiencing selected laboratory abnormalities. Data for the same adverse reactions and laboratory abnormalities in the IFN- $\alpha$  alone arm are shown for comparison:

**Table 1 – Adverse Reactions Reported in at Least 10% of Patients Who Received 25 mg IV Temsirolimus Injection or IFN- $\alpha$  in the Randomized Trial**

Adverse Reaction	Temsirolimus Injection 25 mg n = 208		IFN- $\alpha$ n = 200	
	All Grades* n (%)	Grades 3&4* n (%)	All Grades* n (%)	Grades 3&4* n (%)

<b>General disorders</b>				
Asthenia	106 (51)	23 (11)	127 (64)	52 (26)
Edema †	73 (35)	7 (3)	21 (11)	1 (1)
Pain	59 (28)	10 (5)	31 (16)	4 (2)
Pyrexia	50 (24)	1 (1)	99 (50)	7 (4)
Weight Loss	39 (19)	3 (1)	50 (25)	4 (2)
Headache	31 (15)	1 (1)	30 (15)	0 (0)
Chest Pain	34 (16)	2 (1)	18 (9)	2 (1)
Chills	17 (8)	1 (1)	59 (30)	3 (2)
<b>Gastrointestinal disorders</b>				
Mucositis ‡	86 (41)	6 (3)	19 (10)	0 (0)
Anorexia	66 (32)	6 (3)	87 (44)	8 (4)
Nausea	77 (37)	5 (2)	82 (41)	9 (5)
Diarrhea	56 (27)	3 (1)	40 (20)	4 (2)
Abdominal Pain	44 (21)	9 (4)	34 (17)	3 (2)
Constipation	42 (20)	0 (0)	36 (18)	1 (1)
Vomiting	40 (19)	4 (2)	57 (29)	5 (3)
<b>Infections</b>				
Infections §	42 (20)	6 (3)	19 (10)	4 (2)
Urinary tract infection ¶	31 (15)	3 (1)	24 (12)	3 (2)
Pharyngitis	25 (12)	0 (0)	3 (2)	0 (0)
Rhinitis	20 (10)	0 (0)	4 (2)	0 (0)
<b>Musculoskeletal and connective tissue disorders</b>				
Back Pain	41 (20)	6 (3)	28 (14)	7 (4)
Arthralgia	37 (18)	2 (1)	29 (15)	2 (1)
Myalgia	16 (8)	1 (1)	29 (15)	2 (1)
<b>Respiratory, thoracic and mediastinal disorders</b>				
Dyspnea	58 (28)	18 (9)	48 (24)	11 (6)
Cough	53 (26)	2 (1)	29 (15)	0 (0)
Epistaxis	25 (12)	0 (0)	7 (4)	0 (0)
<b>Skin and subcutaneous tissue disorders</b>				
Rash #	97 (47)	10 (5)	14 (7)	0 (0)
Pruritus	40 (19)	1 (1)	16 (8)	0 (0)
Nail Disorder	28 (14)	0 (0)	1 (1)	0 (0)
Dry Skin	22 (11)	1 (1)	14 (7)	0 (0)
Acne	21 (10)	0 (0)	2 (1)	0 (0)
<b>Nervous system disorders</b>				
Dysgeusia <sup>p</sup>	41 (20)	0 (0)	17 (9)	0 (0)
Insomnia	24 (12)	1 (1)	30 (15)	0 (0)
Depression	9 (4)	0 (0)	27 (14)	4 (2)

\* Common Toxicity Criteria for Adverse Events (CTCAE), Version 3.0.

† Includes edema, facial edema, and peripheral edema

‡ Includes aphthous stomatitis, glossitis, mouth ulceration, mucositis, and stomatitis

§ Includes infections not otherwise specified (NOS) and the following infections that occurred infrequently as distinct entities: abscess, bronchitis, cellulitis, herpes simplex, and herpes zoster

¶ Includes cystitis, dysuria, hematuria, urinary frequency, and urinary tract infection

# Includes eczema, exfoliative dermatitis, maculopapular rash, pruritic rash, pustular rash, rash (NOS), and vesiculobullous rash

ᵀ Includes taste loss and taste perversion

The following selected adverse reactions were reported less frequently (<10%).

Gastrointestinal Disorders - Gastrointestinal hemorrhage (1%), rectal hemorrhage (1%).

Eye Disorders - Conjunctivitis (including lacrimation disorder) (8%).

Immune System - Angioneurotic edema-type reactions (including delayed reactions occurring two months following initiation of therapy) have been observed in some patients who received temsirolimus injection and ACE inhibitors concomitantly.

Infections - Pneumonia (8%), upper respiratory tract infection (7%), wound infection/post-operative wound infection (1%), sepsis (1%).

General Disorders and Administration Site Conditions – Diabetes mellitus (5%).

Respiratory, Thoracic and Mediastinal Disorders – Pleural effusion (4%).

Vascular - Hypertension (7%), venous thromboembolism (including deep vein thrombosis and pulmonary embolus [including fatal outcomes]) (2%), thrombophlebitis (1%), pericardial effusion (1%).

Nervous System Disorders – Convulsion (1%).

**Table 2 – Incidence of Selected Laboratory Abnormalities in Patients Who Received 25 mg IV Temsirolimus Injection or IFN- $\alpha$  in the Randomized Trial**

Laboratory Abnormality	Temsirolimus Injection 25 mg n = 208		IFN- $\alpha$ n = 200	
	All Grades* n (%)	Grades 3&4* n (%)	All Grades* n (%)	Grades 3&4* n (%)
<b>Any</b>	208 (100)	162 (78)	195 (98)	144 (72)
<b>Hematology</b>				
Hemoglobin Decreased	195 (94)	41 (20)	180 (90)	43 (22)
Lymphocytes Decreased <sup>†</sup>	110 (53)	33 (16)	106 (53)	48 (24)
Neutrophils Decreased <sup>†</sup>	39 (19)	10 (5)	58 (29)	19 (10)
Platelets Decreased	84 (40)	3 (1)	51 (26)	0 (0)
Leukocytes Decreased	67 (32)	1 (1)	93 (47)	11 (6)
<b>Chemistry</b>				
Alkaline Phosphatase Increased	141 (68)	7 (3)	111 (56)	13 (7)
AST Increased	79 (38)	5 (2)	103 (52)	14 (7)
Creatinine Increased	119 (57)	7 (3)	97 (49)	2 (1)
Glucose Increased	186 (89)	33 (16)	128 (64)	6 (3)
Phosphorus Decreased	102 (49)	38 (18)	61 (31)	17 (9)
Total Bilirubin Increased	16 (8)	2 (1)	25 (13)	4 (2)
Total Cholesterol Increased	181 (87)	5 (2)	95 (48)	2 (1)
Triglycerides Increased	173 (83)	92 (44)	144 (72)	69 (35)

Potassium Decreased	43 (21)	11 (5)	15 (8)	0 (0)
---------------------	---------	--------	--------	-------

\* NCI CTC version 3.0

† Grade 1 toxicity may be under-reported for lymphocytes and neutrophils

## 6.2 Post-marketing and Other Clinical Experience

The following adverse reactions have been identified during post approval use of temsirolimus injection. Because these reactions are reported voluntarily from a population of uncertain size, it is not always possible to readily estimate their frequency or establish a causal relationship to drug exposure.

The following adverse reactions have been observed in patients receiving temsirolimus: angioedema, rhabdomyolysis, Stevens-Johnson Syndrome, complex regional pain syndrome (reflex sympathetic dystrophy), pancreatitis, cholecystitis, and cholelithiasis.

There are also post-marketing reports of temsirolimus extravasations resulting in swelling, pain, warmth, and erythema.

## 7 DRUG INTERACTIONS

### 7.1 Agents Inducing CYP3A Metabolism

Co-administration of temsirolimus injection with rifampin, a potent CYP3A4/5 inducer, had no significant effect on temsirolimus  $C_{max}$  (maximum concentration) and AUC (area under the concentration versus the time curve) after intravenous administration, but decreased sirolimus  $C_{max}$  by 65% and AUC by 56% compared to temsirolimus injection treatment alone. If alternative treatment cannot be administered, a dose adjustment should be considered [see *Dosage and Administration (2.4)*].

### 7.2 Agents Inhibiting CYP3A Metabolism

Co-administration of temsirolimus injection with ketoconazole, a potent CYP3A4 inhibitor, had no significant effect on temsirolimus  $C_{max}$  or AUC; however, sirolimus AUC increased 3.1-fold, and  $C_{max}$  increased 2.2-fold compared to temsirolimus injection alone. If alternative treatment cannot be administered, a dose adjustment should be considered [see *Dosage and Administration (2.4)*].

### 7.3 Angioedema with ACE inhibitors and Calcium Channel Blockers

Angioedema has been reported in patients taking mammalian target of rapamycin (mTOR) inhibitors in combination with ramipril and/or amlodipine. Monitor patients for signs and symptoms of angioedema when temsirolimus is given concomitantly with an angiotensin converting enzyme (ACE) inhibitors (e.g., ramipril) or calcium channel blockers (CCB) (e.g., amlodipine).

## 8 USE IN SPECIFIC POPULATIONS

### 8.1 Pregnancy

#### Risk Summary

Based on findings in animal studies and its mechanism of action, temsirolimus can cause fetal harm when administered to a pregnant woman [see *Clinical Pharmacology (12.1)*]. Although there are no data on the use of temsirolimus injection in pregnant women, there are limited data on the use of sirolimus, the active metabolite of temsirolimus, during pregnancy; however, these data are insufficient to inform a drug-associated risk of adverse developmental outcomes. In animal reproductive studies, oral daily administration of temsirolimus to pregnant rats and rabbits during organogenesis caused adverse embryo-fetal effects at approximately 0.04 and 0.12 times the AUC in patients at the recommended dose, respectively (see *Data*). Advise pregnant women of the potential hazard to a fetus.

The estimated background risk of major birth defects and miscarriage for the indicated population is

unknown. All pregnancies have a background risk of birth defect, loss or other adverse outcomes. In the U.S. general population, the estimated background risk of major birth defects and miscarriage in clinically recognized pregnancies is 2-4% and 15-20%, respectively.

## Data

### *Animal Data*

Temsirolimus administered daily as an oral formulation throughout organogenesis caused adverse embryo-fetal effects in rats and rabbits at human sub-therapeutic exposures. Embryo-fetal adverse effects in rats consisted of reduced fetal weight and reduced ossifications, and in rabbits included reduced fetal weight, omphalocele, bifurcated sternabrae, notched ribs, and incomplete ossifications.

In rats, the adverse embryo-fetal effects were observed at the oral dose of 2.7 mg/m<sup>2</sup>/day (approximately 0.04-fold the AUC in patients with cancer at the human recommended dose). In rabbits, the adverse embryo-fetal effects were observed at the oral dose of ≥7.2 mg/m<sup>2</sup>/day (approximately 0.12-fold the AUC in patients with cancer at the recommended human dose).

## **8.2 Lactation**

### Risk Summary

There is no information regarding the presence of temsirolimus or its metabolites in human milk, or their effects on the breastfed child or milk production. Trace amounts of sirolimus, the active metabolite of temsirolimus, were present in milk from lactating rats administered sirolimus. Because of the potential for serious adverse reactions in a breastfed child from temsirolimus injection, advise a lactating woman not to breastfeed during treatment with temsirolimus injection and for 3 weeks after the final dose.

## **8.3 Females and Males of Reproductive Potential**

### Contraception

#### *Females*

Temsirolimus injection can cause fetal harm when administered to a pregnant woman [see *Use in Specific Population (8.1)*]. Advise females of reproductive potential to use effective contraception during treatment with temsirolimus injection and for 3 months after the last dose.

#### *Males*

Advise males with partners of reproductive potential to use effective contraception during treatment with temsirolimus injection and for 3 months after the last dose [see *Nonclinical Toxicology (13.1)*].

### Infertility

Based on the findings in animal fertility studies, male and female fertility may be compromised by the treatment with temsirolimus injection. It is not known if the effects on fertility in animal studies were reversible [see *Nonclinical Toxicology (13.1)*].

## **8.4 Pediatric Use**

Limited data are available on the use of temsirolimus in pediatric patients. The effectiveness of temsirolimus in pediatric patients with advanced recurrent/refractory solid tumors has not been established.

Temsirolimus injection was studied in 71 patients (59 patients ages 1 to 17 years and 12 patients ages 18 to 21 years) with relapsed/refractory solid tumors in a phase 1-2 safety and exploratory pharmacodynamic study.

In phase 1, 19 pediatric patients with advanced recurrent/refractory solid tumors received temsirolimus injection at doses ranging from 10 mg/m<sup>2</sup> to 150 mg/m<sup>2</sup> as a 60-minute intravenous infusion once weekly

in three-week cycles.

In phase 2, 52 pediatric patients with recurrent/relapsed neuroblastoma, rhabdomyosarcoma, or high grade glioma received temsirolimus injection at a weekly dose of 75 mg/m<sup>2</sup>. One of 19 patients with neuroblastoma achieved a partial response. There were no objective responses in pediatric patients with recurrent/relapsed rhabdomyosarcoma or high grade glioma.

Adverse reactions associated with temsirolimus injection were similar to those observed in adults. The most common adverse reactions (≥20%) in pediatric patients receiving the 75 mg/m<sup>2</sup> dose included thrombocytopenia, infections, asthenia/fatigue, fever, pain, leukopenia, rash, anemia, hyperlipidemia, increased cough, stomatitis, anorexia, increased plasma levels of alanine aminotransferase and aspartate aminotransferase, hypercholesterolemia, hyperglycemia, abdominal pain, headache, arthralgia, upper respiratory infection, nausea and vomiting, neutropenia, hypokalemia, and hypophosphatemia.

#### Pharmacokinetics:

In phase 1 of the above mentioned pediatric trial, the single-dose and multiple-dose total systemic exposure (AUC) of temsirolimus and sirolimus were less than dose-proportional over the dose range of 10 to 150 mg/m<sup>2</sup>.

In the phase 2 portion, the multiple-dose (Day 1, Cycle 2) pharmacokinetics of temsirolimus injection 75 mg/m<sup>2</sup> were characterized in an additional 35 patients ages 28 days to 21 years (median age of 8 years). The geometric mean body surface adjusted clearance of temsirolimus and sirolimus was 9.45 L/h/m<sup>2</sup> and 9.26 L/h/m<sup>2</sup>, respectively. The mean elimination half-life of temsirolimus and sirolimus was 31 hours and 44 hours, respectively.

The exposure (AUCs) to temsirolimus and sirolimus was approximately 6-fold and 2-fold higher, respectively than the exposure in adult patients receiving a 25 mg intravenous infusion.

### 8.5 Geriatric Use

Clinical studies of temsirolimus injection did not include sufficient numbers of subjects aged 65 and older to determine whether they respond differently from younger subjects. Based on the results of a phase 3 study, elderly patients may be more likely to experience certain adverse reactions including diarrhea, edema, and pneumonia [see *Warnings and Precautions (5.16)*].

### 8.6 Renal Impairment

No clinical studies were conducted with temsirolimus injection in patients with decreased renal function. Less than 5% of total radioactivity was excreted in the urine following a 25 mg intravenous dose of [<sup>14</sup>C]-labeled temsirolimus in healthy subjects. Renal impairment is not expected to markedly influence drug exposure, and no dosage adjustment of temsirolimus injection is recommended in patients with renal impairment.

Temsirolimus injection has not been studied in patients undergoing hemodialysis.

### 8.7 Hepatic Impairment

Temsirolimus injection was evaluated in a dose escalation phase 1 study in 110 patients with normal or varying degrees of hepatic impairment as defined by AST and bilirubin levels and patients with liver transplant (Table 3). Patients with moderate and severe hepatic impairment had increased rates of adverse reactions and deaths, including deaths due to progressive disease, during the study (Table 3).

**Table 3 – Adverse Reactions in Patients with Advanced Malignancies Plus Normal or Impaired Hepatic Function**

<b>Hepatic Function *</b>	<b>Temsirolimus Injection Dose Range</b>	<b>Adverse Reactions Grade ≥ 3 † n (%)</b>	<b>Death ‡ n (%)</b>
---------------------------	--	--	--------------------------

<b>Normal (n = 25)</b>	25 – 175	20 (80.0)	2 (8.0)
<b>Mild (n = 39)</b>	10 – 25	32 (82.1)	5 (12.8)
<b>Moderate (n = 20)</b>	10 – 25	19 (95.0)	8 (40.0)
<b>Severe (n = 24)</b>	7.5 – 15	23 (95.8)	13 (54.2)
<b>Liver Transplant (n = 2)</b>	10	1 (50.0)	0 (0)

\* Hepatic Function Groups: normal = bilirubin and AST  $\leq$ ULN; mild = bilirubin  $>1 - 1.5 \times$ ULN or AST  $>$ ULN but bilirubin  $\leq$ ULN; moderate = bilirubin  $>1.5 - 3 \times$ ULN; severe = bilirubin  $>3 \times$ ULN; liver transplant = any bilirubin and AST.

† Common Terminology Criteria for Adverse Events, version 3.0, including all causality.

‡ Includes deaths due to progressive disease and adverse reactions.

Temsirolimus injection is contraindicated in patients with bilirubin  $>1.5 \times$ ULN [see *Contraindications (4), and Warnings and Precautions (5.2)*]. Use caution when treating patients with mild hepatic impairment. If temsirolimus injection must be given in patients with mild hepatic impairment (bilirubin  $>1 - 1.5 \times$ ULN **or** AST  $>$ ULN but bilirubin  $\leq$ ULN), reduce the dose of temsirolimus injection to 15 mg/week [see *Dosage and Administration (2.4)*]. Because there is a need for dosage adjustment based upon hepatic function, assessment of AST and bilirubin levels is recommended before initiation of temsirolimus injection and periodically thereafter.

## 10 OVERDOSAGE

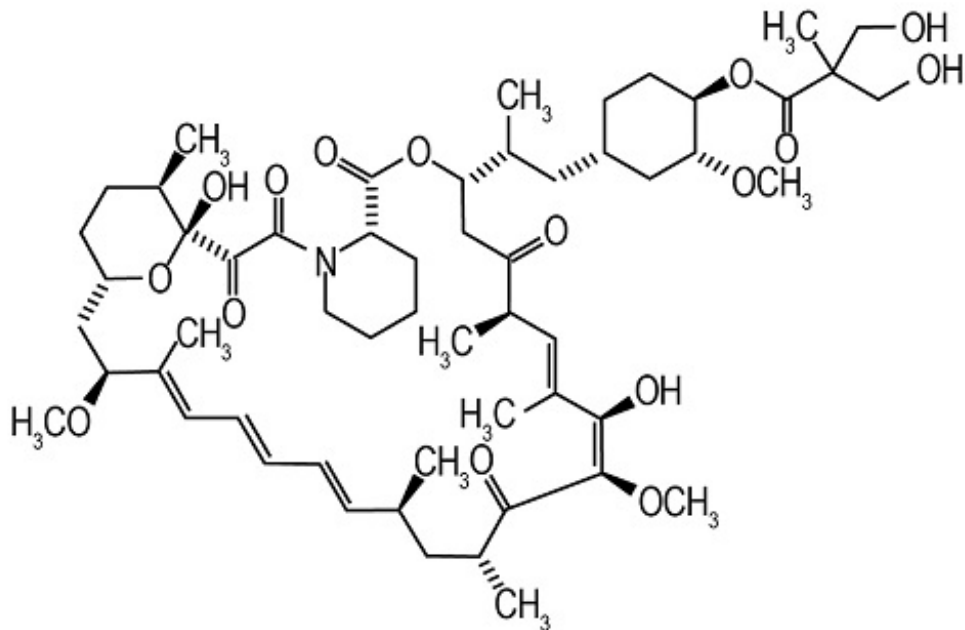
There is no specific treatment for temsirolimus injection intravenous overdose. Temsirolimus injection has been administered to patients with cancer in phase 1 and 2 trials with repeated intravenous doses as high as 220 mg/m<sup>2</sup>. The risk of several serious adverse events, including thrombosis, bowel perforation, interstitial lung disease (ILD), seizure, and psychosis, is increased with doses of temsirolimus injection greater than 25 mg.

## 11 DESCRIPTION

Temsirolimus, an inhibitor of mTOR, is an antineoplastic agent.

Temsirolimus is a white to off-white powder with a molecular formula of C<sub>56</sub>H<sub>87</sub>NO<sub>16</sub> and a molecular weight of 1030.30. It is non-hygroscopic. Temsirolimus is practically insoluble in water and soluble in alcohol. It has no ionizable functional groups, and its solubility is independent of pH.

The chemical name of temsirolimus is (3*S*,6*R*,7*E*,9*R*,10*R*,12*R*,14*S*,15*E*,17*E*,19*E*,21*S*,23*S*,26*R*,27*R*,34*aS*)-9,10,12,13,14,21,22,23,24,25,26,27,32,33,34,34*a*-Hexadecahydro-9,27-dihydroxy-3-[(1*R*)-2-[(1*S*,3*R*,4*R*)-4-hydroxy-3-methoxycyclohexyl]-1-methylethyl]-10,21-dimethoxy-6,8,12,14,20,26-hexamethyl-23,27-epoxy-3*H*-pyrido[2,1-*c*][1,4]oxaazacyclohentriacontine-1,5,11,28,29(4*H*,6*H*,31*H*)-pentone 4'-[2,2-bis(hydroxymethyl)propionate]; or Rapamycin, 42-[3-hydroxy-2-(hydroxymethyl)-2-methylpropanoate].



Temsirolimus injection, 25 mg/mL, is a clear, colorless to light yellow, non-aqueous, ethanolic, sterile solution. Temsirolimus injection requires two dilutions prior to intravenous infusion. Temsirolimus injection should be diluted only with the supplied DILUENT for temsirolimus injection.

DILUENT for temsirolimus injection is a sterile, non-aqueous solution that is supplied with temsirolimus injection, as a kit.

Temsirolimus injection, 25 mg/mL:

Active ingredient: temsirolimus (25 mg/mL)

Inactive ingredients: dehydrated alcohol (49.90% v/v), butylated hydroxy anisole (0.0003% w/v), butylated hydroxy toluene (0.002% w/v), propylene glycol (50.3% w/v), and anhydrous citric acid (0.0025% w/v).

DILUENT for temsirolimus injection:

Inactive ingredients: polysorbate 80 (40.0% w/v), polyethylene glycol 400 (42.8% w/v) and dehydrated alcohol (25.14% v/v).

After the temsirolimus injection vial has been diluted with DILUENT for temsirolimus injection, in accordance with the instructions in section 2.5, the solution contains 35.04% alcohol.

Temsirolimus injection and DILUENT for temsirolimus injection are filled in clear glass vials with butyl rubber stoppers.

## 12 CLINICAL PHARMACOLOGY

### 12.1 Mechanism of Action

Temsirolimus is an inhibitor of mTOR (mammalian target of rapamycin). Temsirolimus binds to an intracellular protein (FKBP-12), and the protein-drug complex inhibits the activity of mTOR that controls cell division. Inhibition of mTOR activity resulted in a G1 growth arrest in treated tumor cells. When mTOR was inhibited, its ability to phosphorylate p70S6k and S6 ribosomal protein, which are downstream of mTOR in the PI3 kinase/AKT pathway was blocked. In *in vitro* studies using renal cell carcinoma cell lines, temsirolimus inhibited the activity of mTOR and resulted in reduced levels of the hypoxia-inducible factors HIF-1 and HIF-2 alpha, and the vascular endothelial growth factor.



## 12.2 Pharmacodynamics

*Effects on Electrocardiogram:* There were no clinically relevant QT changes observed at the recommended dose for temsirolimus injection. In a randomized, single-blinded, crossover study, 58 healthy subjects received temsirolimus injection 25 mg, placebo, and a single oral dose of moxifloxacin 400 mg. A supratherapeutic temsirolimus injection dose was not studied in this randomized QT trial. The largest difference between the upper bound 2-sided 90% CI for the mean difference between temsirolimus injection and placebo-corrected QT interval was less than 10 ms. In a different trial in 69 patients with a hematologic malignancy, temsirolimus injection doses up to 175 mg were studied. No patient with a normal QTcF at baseline had an increase in QTcF >60 ms. Additionally, there were no patients with a QTcF interval greater than 500 ms.

## 12.3 Pharmacokinetics

### Absorption

Following administration of a single 25 mg dose of temsirolimus injection in patients with cancer, mean temsirolimus  $C_{max}$  in whole blood was 585 ng/mL (coefficient of variation, CV =14%), and mean AUC in blood was 1627 ng•h/mL (CV=26%). Typically  $C_{max}$  occurred at the end of infusion. Over the dose range of 1 mg to 25 mg, temsirolimus exposure increased in a less than dose proportional manner while sirolimus exposure increased proportionally with dose. Following a single 25 mg intravenous dose in patients with cancer, sirolimus AUC was 2.7-fold that of temsirolimus AUC, due principally to the longer half-life of sirolimus.

### Distribution

Following a single 25 mg intravenous dose, mean steady-state volume of distribution of temsirolimus in whole blood of patients with cancer was 172 liters. Both temsirolimus and sirolimus are extensively partitioned into formed blood elements.

### Metabolism

Cytochrome P450 3A4 is the major isozyme responsible for the formation of five temsirolimus metabolites. Sirolimus, an active metabolite of temsirolimus, is the principal metabolite in humans following intravenous treatment. The remainder of the metabolites account for less than 10% of radioactivity in the plasma. In human liver microsomes temsirolimus was an inhibitor of CYP2D6 and 3A4. However, there was no effect observed *in vivo* when temsirolimus was administered with desipramine (a CYP2D6 substrate), and no effect is anticipated with substrates of CYP3A4 metabolism.

### Elimination

Elimination is primarily via the feces. After a single IV dose of [<sup>14</sup>C]-temsirolimus approximately 82% of total radioactivity was eliminated within 14 days, with 4.6% and 78% of the administered radioactivity recovered in the urine and feces, respectively. Following a single 25 mg dose of temsirolimus injection in patients with cancer, temsirolimus mean (CV) systemic clearance was 16.2 (22%) L/h. Temsirolimus exhibits a bi-exponential decline in whole blood concentrations and the mean half-lives of temsirolimus and sirolimus were 17.3 hours and 54.6 hours, respectively.

### Drug-Transport Systems - P-glycoprotein

Temsirolimus is a substrate of the efflux transporter P-glycoprotein (Pgp) *in vitro*. If temsirolimus injection is administered with drugs that inhibit Pgp, increased concentrations of temsirolimus are likely and caution should be exercised.

*In vitro*, temsirolimus inhibited human Pgp (IC<sub>50</sub> value of 2μM). If temsirolimus injection is administered with drugs that are substrates of Pgp, increased concentrations of the substrate drug are likely and caution should be exercised.

## Effects of Age and Gender

In population pharmacokinetic-based data analyses, no relationship was apparent between drug exposure and patient age or gender.

## Drug Interactions

### *Effect of Temsirolimus on CYP2D6 or CYP3A*

The concentration of desipramine, a CYP2D6 substrate, was unaffected when 25 mg of temsirolimus was co-administered. No clinically significant effect is anticipated when 25 mg of temsirolimus is co-administered with agents that are metabolized by CYP2D6 or CYP3A.

## 13 NONCLINICAL TOXICOLOGY

### 13.1 Carcinogenesis, Mutagenesis, Impairment of Fertility

Carcinogenicity studies have not been conducted with temsirolimus. However, sirolimus, the major metabolite of temsirolimus in humans, was carcinogenic in mice and rats. The following effects were reported in mice and/or rats in the carcinogenicity studies conducted with sirolimus: lymphoma, hepatocellular adenoma and carcinoma, and testicular adenoma.

Temsirolimus was not genotoxic in a battery of *in vitro* (bacterial reverse mutation in *Salmonella typhimurium* and *Escherichia coli*, forward mutation in mouse lymphoma cells, and chromosome aberrations in Chinese hamster ovary cells) and *in vivo* (mouse micronucleus) assays.

In a fertility study in male rats, decreased number of pregnancies, decreased sperm concentration and motility, decreased reproductive organ weights, and testicular tubular degeneration were observed. These effects were observed at oral temsirolimus doses  $\geq 3$  mg/m<sup>2</sup>/day (approximately 0.2-fold the human recommended intravenous dose). Fertility was absent at 30 mg/m<sup>2</sup>/day.

In a fertility study in female rats, an increased incidence of pre- and post-implantation losses occurred at oral doses  $\geq 4.2$  mg/m<sup>2</sup>/day (approximately 0.3-fold the human recommended intravenous dose), resulting in decreased numbers of live fetuses.

## 14 CLINICAL STUDIES

A phase 3, multi-center, three-arm, randomized, open-label study was conducted in previously untreated patients with advanced renal cell carcinoma (clear cell and non-clear cell histologies).

The objectives were to compare Overall Survival (OS), Progression-Free Survival (PFS), Objective Response Rate (ORR), and safety in patients receiving IFN- $\alpha$  to those receiving temsirolimus injection or temsirolimus injection plus IFN- $\alpha$ . Patients in this study had 3 or more of 6 pre-selected prognostic risk factors (less than one year from time of initial renal cell carcinoma diagnosis to randomization, Karnofsky performance status of 60 or 70, hemoglobin less than the lower limit of normal, corrected calcium of greater than 10 mg/dL, lactate dehydrogenase  $>1.5$  times the upper limit of normal, more than one metastatic organ site). Patients were stratified for prior nephrectomy status within three geographic regions and were randomly assigned (1:1:1) to receive IFN- $\alpha$  alone (n=207), temsirolimus injection alone (25 mg weekly; n=209), or the combination arm (n=210).

The ITT population for this interim analysis included 626 patients. Demographics were comparable between the three treatment arms with regard to age, gender, and race. The mean age of all groups was 59 years (range 23-86). Sixty-nine percent were male and 31% were female. The racial distribution for all groups was 91% White, 4% Black, 2% Asian, and 3% other. Sixty-seven percent of patients had a history of prior nephrectomy.

The median duration of treatment in the temsirolimus injection arm was 17 weeks (range 1-126 weeks). The median duration of treatment on the IFN arm was 8 weeks (range 1-124 weeks).

There was a statistically significant improvement in OS (time from randomization to death) in the temsirolimus injection 25 mg arm compared to IFN- $\alpha$ . The combination of temsirolimus injection 15 mg and IFN- $\alpha$  did not result in a significant increase in OS when compared with IFN- $\alpha$  alone. Figure 1 is a Kaplan-Meier plot of OS in this study. The evaluations of PFS (time from randomization to disease progression or death) and ORR, were based on blinded independent radiologic assessment of tumor response. Efficacy results are summarized in Table 4.

**Table 4 - Summary of Efficacy Results of Temsirolimus Injection vs. IFN- $\alpha$**

<b>Parameter</b>	<b>Temsirolimus Injection n = 209</b>	<b>IFN-<math>\alpha</math> n = 207</b>	<b>P-value <sup>a</sup></b>	<b>Hazard Ratio (95% CI) <sup>b</sup></b>
<b>Median Overall Survival</b> Months (95% CI)	10.9 (8.6, 12.7)	7.3 (6.1, 8.8)	0.0078 *	0.73 (0.58, 0.92)
<b>Median Progression-Free Survival</b> Months (95% CI)	5.5 (3.9, 7.0)	3.1 (2.2, 3.8)	0.0001 **	0.66 (0.53, 0.81)
<b>Overall Response Rate</b> % (95% CI)	8.6 (4.8, 12.4)	4.8 (1.9, 7.8)	0.1232 <sup>c</sup> **	NA

CI = confidence interval; NA = not applicable

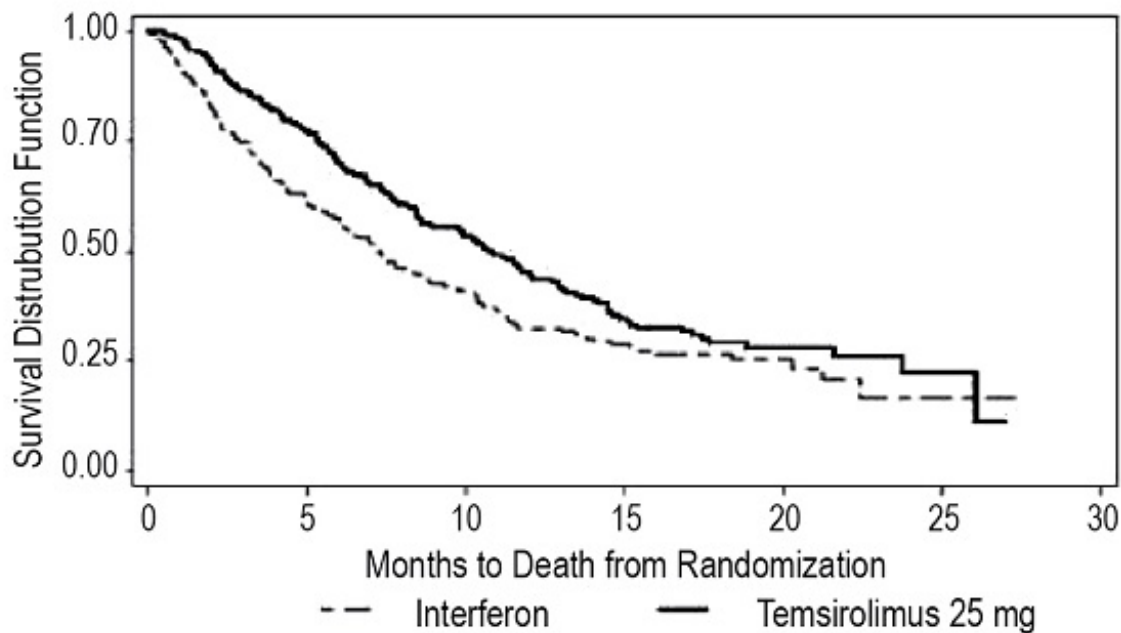
\* A comparison is considered statistically significant if the p-value is <0.0159 (O'Brien-Fleming boundary at 446 deaths).

\*\* Not adjusted for multiple comparisons.

<sup>a</sup> Based on log-rank test stratified by prior nephrectomy and region.

<sup>b</sup> Based on Cox proportional hazard model stratified by prior nephrectomy and region.

<sup>c</sup> Based on Cochran-Mantel-Haenszel test stratified by prior nephrectomy and region.



**Figure 1: Kaplan-Meier Curves for Overall Survival–Temsirolimus vs. IFN**

## 15 REFERENCES

1. OSHA Hazardous Drugs. *OSHA*. <https://www.osha.gov/SLTC/hazardousdrugs/index.html>.

## 16 HOW SUPPLIED/STORAGE AND HANDLING

Temsirolimus injection 25 mg/mL is available as a clear, colorless to light yellow viscous solution and is supplied in single-dose vial of 25 mg/mL (NDC 72611-780-01).

DILUENT for temsirolimus injection is available as a clear, colorless to light yellow non-aqueous solution and is supplied in single-dose vial of 2.2 mL (NDC 72611-782-01).

A KIT of temsirolimus injection, 25 mg/mL; Single carton containing both the vials (NDC 72611-785-02).

Each kit is supplied in a single carton containing one single-dose vial of 25 mg/mL of temsirolimus and one DILUENT vial which includes a deliverable volume of 1.8 mL, and must be stored at 2° to 8°C (36° to 46°F). Protect from light.

Temsirolimus injection is a cytotoxic drug. Follow applicable special handling and disposal procedures.

## 17 PATIENT COUNSELING INFORMATION

### Allergic (Hypersensitivity/Infusion) Reactions

Patients should be informed of the possibility of serious allergic reactions, including anaphylaxis (including life threatening and fatal reactions), despite premedication with antihistamines, and to immediately report any facial swelling or difficulty breathing [see *Warnings and Precautions* (5.1)].

### Increased Blood Glucose Levels

Patients are likely to experience increased blood glucose levels while taking temsirolimus injection. This may result in the need for initiation of, or increase in the dose of, insulin and/or hypoglycemic agents. Patients should be directed to report any excessive thirst or frequency of urination to their physician [see *Warnings and Precautions* (5.3)].

## **Infections**

Patients should be informed that they may be more susceptible to infections while being treated with temsirolimus injection [see *Warnings and Precautions (5.4)*].

## **Interstitial Lung Disease**

Patients should be warned of the possibility of developing interstitial lung disease, a chronic inflammation of the lungs, which may rarely result in death [see *Warnings and Precautions (5.5)*]. Patients, including those who are taking or have taken corticosteroids or immunosuppressive agents, should be directed to report promptly any new or worsening respiratory symptoms to their physician.

## **Increased Blood Triglycerides and/or Cholesterol**

Patients are likely to experience elevated triglycerides and/or cholesterol during temsirolimus injection treatment. This may require initiation of, or increase in the dose of, lipid-lowering agents [see *Warnings and Precautions (5.6)*].

## **Bowel Perforation**

Patients should be warned of the possibility of bowel perforation. Patients should be directed to report promptly any new or worsening abdominal pain or blood in their stools [see *Warnings and Precautions (5.7)*].

## **Renal Failure**

Patients should be informed of the risk of renal failure [see *Warnings and Precautions (5.8)*].

## **Wound Healing Complications**

Patients should be advised of the possibility of abnormal wound healing if they have surgery within a few weeks of initiating therapy or during therapy [see *Warnings and Precautions (5.9)*].

## **Intracerebral Bleeding**

Patients with CNS tumors and/or receiving anticoagulants should be informed of the increased risk of developing intracerebral bleeding (including fatal outcomes) while on temsirolimus injection [see *Warnings and Precautions (5.10)*].

## **Proteinuria and Nephrotic Syndrome**

Advise patients that treatment with temsirolimus injection may require monitoring for proteinuria and nephrotic syndrome and to contact their health care provider for signs and symptoms of nephrotic syndrome [see *Warnings and Precautions (5.11)*].

## **Medications that can interfere with Temsirolimus Injection**

Some medicines can interfere with the breakdown or metabolism of temsirolimus injection. In particular, patients should be directed to inform their physician if they are taking any of the following: Protease inhibitors, anti-epileptic medicines including carbamazepine, phenytoin, and barbiturates, St. John's Wort, rifampicin, rifabutin, nefazodone or selective serotonin re-uptake inhibitors used to treat depression, antibiotics or antifungal medicines used to treat infections [see *Warnings and Precautions (5.12)*].

## **Vaccinations**

Patients should be advised that vaccinations may be less effective while being treated with temsirolimus injection. In addition, the use of live vaccines, and close contact with those who have received live vaccines, while on temsirolimus injection should be avoided [see *Warnings and Precautions (5.14)*].

## **Embryo-Fetal Toxicity**

Advise pregnant women and females of reproductive potential that temsirolimus injection can cause fetal harm. Advise females of reproductive potential to inform their healthcare provider of a known or

suspected pregnancy [*see Warnings and Precautions (5.15) and Use in Specific Populations (8.1)*].

Advise females of reproductive potential to use effective contraception during treatment with temsirolimus injection and for 3 months after receiving the last dose [*see Use in Specific Populations (8.3)*].

Advise males with female partners of reproductive potential to use effective contraception during treatment with temsirolimus injection and for 3 months after receiving the last dose [*see Use in Specific Populations (8.3)*].

### **Lactation**

Advise lactating women not to breastfeed during treatment with temsirolimus injection and for 3 weeks after the last dose [*see Use in Specific Populations (8.2)*].

### **Infertility**

Advise patients that male and female fertility may be compromised by treatment with temsirolimus injection [*see Use in Specific Populations (8.3) and Nonclinical Toxicology (13.1)*].

### **Elderly Patients**

Elderly patients should be advised that they may be more likely to experience certain adverse reactions including diarrhea, edema, and pneumonia [*see Warnings and Precautions (5.16)*].

Manufactured by:  
Gland Pharma Limited  
Viskhapatnam-530049  
Andhra Pradesh, India

Distributed by:  
Almaject, Inc.  
Morristown, NJ 07960 USA

Product of India

Rx only

Revised: August 2019  
PI782-00

## **PRINCIPAL DISPLAY PANEL - 25 mg/mL vial**

**NDC 72611-780-01**

### **Temsirolimus Injection**

**25 mg/mL per vial\***

\*Each vial contains 0.2 mL overfill

### **For Intravenous Infusion Only**

**MUST BE DILUTED**

10 mg/mL after initial dilution

**Sterile - Refrigerate**

**Single-Dose Vial**

NDC 72611-780-01 Sterile

# Temsirolimus Injection

**25 mg/mL per vial\***

\*Each vial contains 0.2 mL overfill

**For Intravenous Infusion Only**

**MUST BE DILUTED**

10 mg/mL after initial dilution

**Single-Dose Vial Refrigerate**

 **Almaject®**

**Rx only**

**Contains:** dehydrated alcohol  
49.90% v/v.

**First Dilution:** Add 1.8 mL of DILUENT to obtain a concentration of 10 mg/mL.

**Second Dilution:** Withdraw the exact volume required and add to 250 mL of 0.9% Sodium Chloride Injection.

Mfg. Lic. No.: 03/NP/AP/2011/F/R  
Distributed by: Almaject, Inc.  
Morristown, NJ 07960 USA

Made in India

780-01-00

LAB-020671-00



(01)00372611780016

Lot: **Unvarnish area**  
Exp: **10.5 x 18 mm**

## PRINCIPAL DISPLAY PANEL - diluent vial

NDC 72611-782-01

**DILUENT for Temsirolimus Injection**

**2.2 mL**

Not for direct administration

Only for dilution of temsirolimus injection vial

**Sterile - Refrigerate**

**Single-Dose Vial**

NDC 72611-782-01 Sterile

# DILUENT for Temsirolimus Injection

**2.2 mL**

Not for direct administration

Only for dilution of  
temsirolimus injection vial

**Single-Dose Vial Refrigerate**

 **Almaject®**

**Rx only**

**Contains:** dehydrated alcohol  
25.14% v/v.

USAGE: See Insert

Mfg. Lic. No.: 03/NP/AP/2011/F/R

Distributed by: Almaject, Inc.  
Morristown, NJ 07960 USA

Made in India

782-01-00

LAB-020672-00

Rev. 08/2019



(01)00372611782010

Lot: **Unvarnish area**  
Exp: **11.5 x 18 mm**

## PRINCIPAL DISPLAY PANEL - carton

Retain in carton until time of use

NDC 72611-785-02

**Temsirolimus Injection**

**25 mg/mL per vial\***

\*each single-dose vial contains 0.2 mL overfill

**For Intravenous Infusion Only**

**CONCENTRATED - Requires two dilutions before administration**

**10 mg/mL after Initial dilution**

\*Each carton contains:

1 single-dose vial Temsirolimus Injection 25 mg/mL

1 single-dose vial DILUENT for Temsirolimus Injection

**Sterile - Refrigerate**





1/2

Un Varnished Area for  
2D Barcode & Batch details  
55 x 32 mm

Mfg. Lic. No.: 03/VP/AP/2011/F/R

Manufactured by:  
Gland Pharma Limited  
Visakhapatnam-530049,  
Andhra Pradesh, India

Distributed by:  
Almaject, Inc.  
Morristown, NJ 07960 USA

Product of India

785-02-00  
Rev. 08/2019

**Sterile  
Rx only**

**NDC 72611-785-02**

**Temsirolimus Injection**

**25 mg/mL per vial\***

**\*Each single-dose vial contains 0.2 mL overfill**

**For Intravenous Infusion Only**

**CONCENTRATED – Requires two dilutions  
before administration**

**10 mg/mL after initial dilution**

**\*Each carton contains:**

1 single-dose vial Temsirolimus Injection 25 mg/mL  
1 single-dose vial DILUENT for Temsirolimus Injection

**Refrigerate**

 **Almaject®**

Retain  
in carton  
until time  
of use



**Each Temsirolimus Injection  
vial contains:**

25 mg/mL\* temsirolimus.  
Also contains dehydrated  
alcohol (49.90% v/v),  
butylated hydroxy anisole  
(0.0003% w/v),  
butylated hydroxy toluene  
(0.002% w/v),  
propylene glycol (50.98% w/v)

**Sterile  
Rx only**

**NDC 72611-785-02**

**Temsirolimus Injection**

**25 mg/mL per vial\***

Retain  
in carton  
until time  
of use

propylene glycol (50.5% w/v), and anhydrous citric acid (0.0025% w/v).

**Each DILUENT for Temsirolimus Injection vial 2.2 mL (1.8 mL deliverable volume) contains:**

polysorbate 80 (40.0% w/v), polyethylene glycol 400 (42.8% w/v), and dehydrated alcohol (25.14% v/v).

**See package insert for dilution instructions and recommended dosage.**

**Refrigerate at 2° to 8°C (36° to 46°F). Protect from light.**

**\*Each single-dose vial contains 0.2 mL overfill**

**For Intravenous Infusion Only**

**CONCENTRATED – Requires two dilutions before administration**

**10 mg/mL after initial dilution**

**\*Each carton contains:**

1 single-dose vial Temsirolimus Injection 25 mg/mL  
1 single-dose vial DILUENT for Temsirolimus Injection

**Refrigerate**

**Almaject®**

**Sterile  
Rx only**

**NDC 72611-785-02**

**Temsirolimus Injection**

**25 mg/mL per vial\***

**\*Each single-dose vial contains 0.2 mL overfill**

**For Intravenous Infusion Only**

**CONCENTRATED – Requires two dilutions before administration**

## TEMSIROLIMUS

temsirolimus injection kit

### Product Information

<b>Product Type</b>	HUMAN PRESCRIPTION DRUG	<b>Item Code (Source)</b>	NDC:72611-785
---------------------	-------------------------	---------------------------	---------------

### Packaging

#	Item Code	Package Description	Marketing Start Date	Marketing End Date
1	NDC:72611-785-02	1 in 1 CARTON; Type 1: Convenience Kit of Co-Package	05/08/2020	

### Quantity of Parts

Part #	Package Quantity	Total Product Quantity
<b>Part 1</b>	1 VIAL, SINGLE-DOSE	1 mL
<b>Part 2</b>	1 VIAL, SINGLE-DOSE	1.8 mL

## Part 1 of 2

### TEMSIROLIMUS

temsirolimus injection, solution, concentrate

#### Product Information

Item Code (Source)	NDC:72611-780
Route of Administration	INTRAVENOUS

#### Active Ingredient/Active Moiety

Ingredient Name	Basis of Strength	Strength
TEMSIROLIMUS (UNII: 624KN6GM2T) (TEMSIROLIMUS - UNII:624KN6GM2T)	TEMSIROLIMUS	25 mg in 1 mL

#### Inactive Ingredients

Ingredient Name	Strength
ANHYDROUS CITRIC ACID (UNII: XF417D3PSL)	0.025 mg in 1 mL
ALCOHOL (UNII: 3K9958V90M)	394.6 mg in 1 mL
PROPYLENE GLYCOL (UNII: 6DC9Q167V3)	503.325 mg in 1 mL
BUTYLATED HYDROXYANISOLE (UNII: REK4960K2U)	0.003 mg in 1 mL
BUTYLATED HYDROXYTOLUENE (UNII: 1P9D0Z171K)	0.02 mg in 1 mL

#### Packaging

#	Item Code	Package Description	Marketing Start Date	Marketing End Date
1	NDC:72611-780-01	1 mL in 1 VIAL, SINGLE-DOSE; Type 1: Convenience Kit of Co-Package		

#### Marketing Information

Marketing Category	Application Number or Monograph Citation	Marketing Start Date	Marketing End Date
ANDA	ANDA207383	05/08/2020	

## Part 2 of 2

### TEMSIROLIMUS DILUENT

diluent injection, solution, concentrate

#### Product Information

<b>Item Code (Source)</b>	NDC:72611-782
<b>Route of Administration</b>	INTRAVENOUS

### Inactive Ingredients

Ingredient Name	Strength
<b>POLYSORBATE 80</b> (UNII: 6OZP39ZG8H)	880 mg in 1.8 mL
<b>POLYETHYLENE GLYCOL 400</b> (UNII: B697894SGQ)	941 mg in 1.8 mL
<b>ALCOHOL</b> (UNII: 3K9958V90M)	438 mg in 1.8 mL

### Packaging

#	Item Code	Package Description	Marketing Start Date	Marketing End Date
1	NDC:72611-782-01	1.8 mL in 1 VIAL, SINGLE-DOSE; Type 1: Convenience Kit of Co-Package		

### Marketing Information

Marketing Category	Application Number or Monograph Citation	Marketing Start Date	Marketing End Date
ANDA	ANDA207383	05/08/2020	

### Marketing Information

Marketing Category	Application Number or Monograph Citation	Marketing Start Date	Marketing End Date
ANDA	ANDA207383	05/08/2020	

**Labeler** - Almaject, Inc. (116626205)

Revised: 5/2020

Almaject, Inc.