

AN ADC SP INTENSIVE BB- titanium dioxide cream
AN Co Ltd.

Disclaimer: Most OTC drugs are not reviewed and approved by FDA, however they may be marketed if they comply with applicable regulations and policies. FDA has not evaluated whether this product complies.

ACTIVE INGREDIENT

Active Ingredient: Titanium Dioxide 3.45%

INACTIVE INGREDIENT

Inactive Ingredients: Water, Caprylic/Capric Triglyceride, Glycerin, Iron Oxides/Triethoxycaprylylsilane, Propylene Glycol, Panthenol, Hectorite/Propylene Carbonate /Quaternium-18, Squalane, Cetyl PEG/PPG-10/1 Dimethicone, Niacinamide, Butylene Glycol Dicaprylate/Dicaprate, Portulaca Oleracea Extract, Ipomoea Purpurea Extract/Paeonia Albiflora Flower Extract/Magnolia Liliflora Flower Extract/Lilium Candidum Flower Extract, Aloe Barbadensis Leaf Extract, Sorbitan Sesquioleate, Magnesium Sulfate, Arbutin, Ceramide NP/Hydrogenated Polydecene/Stearic Acid/Butyrospermum Parkii (Shea) Butter/Ceteareth-20/Glyceryl Citrate/Lactate/Linoleate/Oleate Butylene glycol, Phenoxyethanol, Microcrystalline Wax, Beeswax, Dimethicone, Fragrance, Hydroxyethylcellulose, Tocopheryl Acetate, Copper Tripeptide-1, Palmitoyl Pentapeptide-4

PURPOSE

Purpose: Sunscreen

WARNINGS

Precautions on use: 1. Stop using the product if there are any of the following abnormal symptoms appearing after use and consult with your dermatologist as continued use can worsen the symptoms. A) If there are red spots, swelling, itchiness, or irritation B) If the above symptoms appear around the skin to which the product has been applied after being exposed to direct sunlight. 2. Precautions on storage and handling A) Make sure to close the cap after use. B) Keep out of the reach of children. C) Do not keep the product in a hot or cold place or a place getting direct sunlight. 3. Do not apply the product to any parts of the skin with wound, eczema, or dermatitis.

DESCRIPTION

Suggested use: After the final stage of basic makeup, apply an appropriate amount of the BB cream to the whole face and gently massage the face upwards to help the skin absorb the nutrients.

Dosage & administration: Apply 2~3g of BB cream to face gently.

PACKAGE LABEL.PRINCIPAL DISPLAY PANEL

AN ADC SP
Intensive BB Cream
Functional whitening cosmetics

- 화사한 피부에 도움이 되는 여러 가지 꽃 성분 등이 함유되어 잡티와 붉은 피부를 고르게 커버하여 자연스럽게 화사한 피부를 표현해 주는 비비크림
- 피부 속 수분 공급에 도움을 주는 보습성분인 히아루론산, 세라마이드 등과 다양한 펩타이드들이 고농축으로 함유되어 건강한 피부로 케어해주는 비비크림

Suggested use : After the final stage of basic makeup, apply an appropriate amount of the BB cream to the whole face and gently massage the face upwards to help the skin absorb the nutrients.
*Apply 2~3g of BB cream to face gently.

(주)에이앤 www.allnationss.com
본사 : 경기도 수원시 장안구 팔달로 259번길35 AN빌딩
고객센터 : 1899-6859
공장 : 충청북도 영동군 영동항간로 1452-248

MADE IN KOREA

※ Precautions on use
1. Stop using the product if there are any of the following abnormal symptoms appearing after use and consult with your dermatologist as continued use can worsen the symptoms.
A) If there are red spots, swelling, itchiness, or irritation
B) If the above symptoms appear around the skin to which the product has been applied after being exposed to direct sunlight.
2. Precautions on storage and handling
A) Make sure to close the cap after use.
B) Keep out of the reach of children.
C) Do not keep the product in a hot or cold place or a place getting direct sunlight.
3. Do not apply the product to any parts of the skin with wound, eczema or dermatitis.

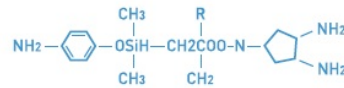
본 제품에 이상이 있을 경우 공정 개량위탁회 고지 '소비자 알람 위장 기준'에 의해 보상해 드립니다.



INTENSIVE BB CREAM

**All Nations A.D.C
Special Program**

Anazao revive
Diaphanes radiance
Chara delight



For all skin type

e 50g/1.67oz



Drug Facts

Active Ingredient:
Titanium Dioxide 3.45%

Inactive Ingredients:

Water, Caprylic/Capric Triglyceride, Glycerin, Iron Oxides/Triethoxycaprylylsilane, Propylene Glycol, Panthenol, Hecitorite/PropyleneCarbonate /Quaternium-18, Squalane, Cetyl PEG/PPG-10/1 Dimethicone, Niacinamide, ButyleneGlycolDicaprylate /Dicaprate, PortulacaOleracea Extract, Ipomoea Purpurea Extract/PaeoniaAlbiflora Flower Extract/Magnolia Liliflora Flower Extract/LiliumCandidum Flower Extract, Aloe Barbadensis Leaf Extract, SorbitanSesquioleate, Magnesium Sulfate, Arbutin, CeramideNP/Hydrogenated Polydecene/Stearic Acid/ButyrospermumParki (Shea) Butter/Celeareth-20/Glycerol Citrate/Lactate/Linoleate/Oleate Butylene glycol, Phenoxyethanol, Microcrystalline Wax, Beeswax, Dimethicone, Fragrance, Hydroxyethylcellulose, Tocopheryl Acetate, Copper Tripeptide-1, Palmitoyl Pentapeptide-4

AN ADC SP INTENSIVE BB

titanium dioxide cream

Product Information

Product Type	HUMAN OTC DRUG	Item Code (Source)	NDC:69 153-110
Route of Administration	TOPICAL		

Active Ingredient/Active Moiety

Ingredient Name	Basis of Strength	Strength
Titanium Dioxide (UNII: 15FIX9 V2JP) (TITANIUM DIOXIDE - UNII:15FIX9 V2JP)	Titanium Dioxide	1.72 g in 50 g

Inactive Ingredients

Ingredient Name	Strength
Water (UNII: 059QF0KO0R)	
Glycerin (UNII: PDC6A3C0OX)	

Packaging				
#	Item Code	Package Description	Marketing Start Date	Marketing End Date
1	NDC:69 153-110-02	1 in 1 CARTON	05/01/2016	
1	NDC:69 153-110-01	50 g in 1 TUBE; Type 0: Not a Combination Product		

Marketing Information			
Marketing Category	Application Number or Monograph Citation	Marketing Start Date	Marketing End Date
OTC monograph not final	part352	05/01/2016	

Labeler - AN Co Ltd. (688448454)

Registrant - AN Co Ltd. (688448454)

Establishment			
Name	Address	ID/FEI	Business Operations
AN Co Ltd.		688448454	manufacture(69153-110)

Revised: 6/2016

AN Co Ltd.