

LACOSAMIDE- lacosamide solution

Amneal Pharmaceuticals LLC

HIGHLIGHTS OF PRESCRIBING INFORMATION

These highlights do not include all the information needed to use LACOSAMIDE ORAL SOLUTION safely and effectively. See full prescribing information for LACOSAMIDE ORAL SOLUTION.

LACOSAMIDE oral solution, CV
Initial U.S. Approval: 2008

RECENT MAJOR CHANGES

Dosage and Administration (2.1) 4/2023
Dosage and Administration (2.2) 10/2023

INDICATIONS AND USAGE

Lacosamide oral solution is indicated for:

- Treatment of partial-onset seizures in patients 4 years of age and older (1.1)
- Adjunctive therapy in the treatment of primary generalized tonic-clonic seizures in patients 4 years of age and older (1.2)

DOSAGE AND ADMINISTRATION

- *Adults (17 years and older):*
 - Initial dosage for monotherapy for the treatment of partial-onset seizures is 100 mg twice daily (2.1)
 - Initial dosage for adjunctive therapy for the treatment of partial-onset seizures or primary generalized tonic-clonic seizures is 50 mg twice daily (2.1)
 - Maximum recommended dosage for monotherapy and adjunctive therapy is 200 mg twice daily (2.1)
- *Pediatric Patients 4 years to less than 17 years:* The recommended dosage is based on body weight and is administered orally twice daily (2.1)
- Increase dosage based on clinical response and tolerability, no more frequently than once per week (2.1)
- Dose adjustment is recommended for severe renal impairment (2.4, 12.3)
- Dose adjustment is recommended for mild or moderate hepatic impairment; use in patients with severe hepatic impairment is not recommended (2.5, 12.3)

DOSAGE FORMS AND STRENGTHS

- 10 mg/mL oral solution (3)

CONTRAINDICATIONS

None (4)

WARNINGS AND PRECAUTIONS

- Monitor patients for suicidal behavior and ideation (5.1)
- Lacosamide may cause dizziness and ataxia (5.2)
- Cardiac Rhythm and Conduction Abnormalities: Obtaining ECG before beginning and after titration to steady-state maintenance is recommended in patients with underlying proarrhythmic conditions or on concomitant medications that affect cardiac conduction; closely monitor these patients (5.3, 7.2)
- Lacosamide may cause syncope (5.4)
- Lacosamide should be gradually withdrawn to minimize the potential of increased seizure frequency (5.5)
- Drug Reaction with Eosinophilia and Systemic Symptoms (DRESS)/Multi-Organ Hypersensitivity: Discontinue if no alternate etiology (5.6)

ADVERSE REACTIONS

- *Adjunctive therapy:* Most common adverse reactions in adults ($\geq 10\%$ and greater than placebo) are diplopia, headache, dizziness, nausea, and somnolence (6.1)
- *Monotherapy:* Most common adverse reactions are similar to those seen in adjunctive therapy studies (6.1)

- Pediatric patients: Adverse reactions are similar to those seen in adult patients (6.1)

To report SUSPECTED ADVERSE REACTIONS, contact Amneal Pharmaceuticals at 1-877-835-5472 or FDA at 1-800-FDA-1088 or www.fda.gov/medwatch

----- **USE IN SPECIFIC POPULATIONS** -----

- Pregnancy: Based on animal data, may cause fetal harm (8.1)

Additional pediatric use information is approved for UCB, Inc.'s VIMPAT® (lacosamide) oral solution. However, due to UCB, Inc.'s marketing exclusivity rights, this drug product is not labeled with that information.

See 17 for PATIENT COUNSELING INFORMATION and Medication Guide.

Revised: 3/2024

FULL PRESCRIBING INFORMATION: CONTENTS*

1 INDICATIONS AND USAGE

- 1.1 Partial-Onset Seizures
- 1.2 Primary Generalized Tonic-Clonic Seizures

2 DOSAGE AND ADMINISTRATION

- 2.1 Dosage Information
- 2.2 Alternate Initial Dosage Information to Achieve the Maintenance Dosage in a Shorter Timeframe
- 2.3 Converting From a Single Antiepileptic (AED) to Lacosamide Monotherapy for the Treatment of Partial-Onset Seizures
- 2.4 Dosage Information for Patients with Renal Impairment
- 2.5 Dosage Information for Patients with Hepatic Impairment
- 2.6 Administration Instructions for Lacosamide Oral Solution
- 2.8 Discontinuation of Lacosamide Oral Solution

3 DOSAGE FORMS AND STRENGTHS

4 CONTRAINDICATIONS

5 WARNINGS AND PRECAUTIONS

- 5.1 Suicidal Behavior and Ideation
- 5.2 Dizziness and Ataxia
- 5.3 Cardiac Rhythm and Conduction Abnormalities
- 5.4 Syncope
- 5.5 Withdrawal of Antiepileptic Drugs (AEDs)
- 5.6 Drug Reaction with Eosinophilia and Systemic Symptoms (DRESS)/Multi-Organ Hypersensitivity

6 ADVERSE REACTIONS

- 6.1 Clinical Trials Experience
- 6.2 Post-marketing Experience

7 DRUG INTERACTIONS

- 7.1 Strong CYP3A4 or CYP2C9 Inhibitors
- 7.2 Concomitant Medications that Affect Cardiac Conduction

8 USE IN SPECIFIC POPULATIONS

- 8.1 Pregnancy
- 8.2 Lactation
- 8.4 Pediatric Use
- 8.5 Geriatric Use

8.6 Renal Impairment

8.7 Hepatic Impairment

9 DRUG ABUSE AND DEPENDENCE

9.1 Controlled Substance

9.2 Abuse

9.3 Dependence

10 OVERDOSAGE

11 DESCRIPTION

11.3 Lacosamide Oral Solution, USP

12 CLINICAL PHARMACOLOGY

12.1 Mechanism of Action

12.2 Pharmacodynamics

12.3 Pharmacokinetics

13 NONCLINICAL TOXICOLOGY

13.1 Carcinogenesis, Mutagenesis, Impairment of Fertility

14 CLINICAL STUDIES

14.1 Monotherapy in Patients with Partial-Onset Seizures

14.2 Adjunctive Therapy in Patients with Partial-Onset Seizures

14.3 Adjunctive Therapy in Patients with Primary Generalized Tonic-Clonic Seizures

14.3 Adjunctive Therapy in Patients with Primary Generalized Tonic-Clonic Seizures

16 HOW SUPPLIED/STORAGE AND HANDLING

16.1 How Supplied

16.2 Storage and Handling

17 PATIENT COUNSELING INFORMATION

* Sections or subsections omitted from the full prescribing information are not listed.

FULL PRESCRIBING INFORMATION

1 INDICATIONS AND USAGE

1.1 Partial-Onset Seizures

Lacosamide oral solution is indicated for the treatment of partial-onset seizures in patients 4 years of age and older.

Additional pediatric use information is approved for UCB, Inc.'s VIMPAT® (lacosamide) oral solution. However, due to UCB, Inc.'s marketing exclusivity rights, this drug product is not labeled with that information.

1.2 Primary Generalized Tonic-Clonic Seizures

Lacosamide oral solution is indicated as adjunctive therapy in the treatment of primary generalized tonic-clonic seizures in patients 4 years of age and older.

2 DOSAGE AND ADMINISTRATION

2.1 Dosage Information

The recommended dosage for monotherapy and adjunctive therapy for partial-onset seizures in patients 4 years of age and older and for adjunctive therapy for primary generalized tonic-clonic seizures in patients 4 years of age and older is included in Table 1. In pediatric patients, the recommended dosing regimen is dependent upon body weight. Dosage should be increased based on clinical response and tolerability, no more frequently than once per week. Titration increments should not exceed those shown in Table 1.

Table 1: Recommended Dosages for Partial-Onset Seizures (Monotherapy or Adjunctive Therapy) in Patients 4 Years of Age and Older, and for Primary Generalized Tonic-Clonic Seizures (Adjunctive Therapy) in Patients 4 Years of Age and Older *

Age and Body Weight	Initial Dosage	Titration Regimen	Maintenance Dosage
Adults (17 years and older)	Monotherapy**: 100 mg twice daily (200 mg per day) Adjunctive Therapy: 50 mg twice daily (100 mg per day)	Increase by 50 mg twice daily (100 mg per day) every week	Monotherapy**: 150 mg to 200 mg twice daily (300 mg to 400 mg per day) Adjunctive Therapy: 100 mg to 200 mg twice daily (200 mg to 400 mg per day)
Pediatric patients weighing at least 50 kg	50 mg twice daily (100 mg per day)	Increase by 50 mg twice daily (100 mg per day) every week	Monotherapy**: 150 mg to 200 mg twice daily (300 mg to 400 mg per day) Adjunctive Therapy: 100 mg to 200 mg twice daily (200 mg to 400 mg per day)
Pediatric patients weighing 30 kg to less than 50 kg	1 mg/kg twice daily (2 mg/kg/day)	Increase by 1 mg/kg twice daily (2 mg/kg/day) every week	2 mg/kg to 4 mg/kg twice daily (4 mg/kg/day to 8 mg/kg/day)
Pediatric patients weighing 11 kg to less than 30 kg	1 mg/kg twice daily (2 mg/kg/day)	Increase by 1 mg/kg twice daily (2 mg/kg/day) every week	3 mg/kg to 6 mg/kg twice daily (6 mg/kg/day to 12 mg/kg/day)
*when not specified, the dosage is the same for monotherapy for partial-onset seizures and adjunctive therapy for partial-onset seizures or primary generalized tonic clonic seizures. **Monotherapy for partial-onset seizures only			

In adjunctive clinical trials in adult patients with partial-onset seizures, a dosage higher than 200 mg twice daily (400 mg per day) was not more effective and was associated

with a substantially higher rate of adverse reactions [see *Adverse Reactions (6.1)* and *Clinical Studies (14.2)*].

Additional pediatric use information is approved for UCB, Inc.'s VIMPAT® (lacosamide) oral solution. However, due to UCB, Inc.'s marketing exclusivity rights, this drug product is not labeled with that information.

2.2 Alternate Initial Dosage Information to Achieve the Maintenance Dosage in a Shorter Timeframe

For monotherapy and adjunctive therapy for partial-onset seizures in patients 17 years of age and older, and for adjunctive therapy for primary generalized tonic-clonic seizures in patients 17 years of age and older, an alternate initial dosing regimen for week 1 (e.g., including a loading dose and/or a higher initial dosage) may be administered in patients for whom achieving the recommended maintenance dosage in a shorter timeframe is clinically indicated (see Table 2). The alternate initial dosage regimen should be continued for one week. Lacosamide oral solution may then be titrated based on clinical response and tolerability, no more frequently than once per week, if needed. The loading dose should be administered with medical supervision because of the possibility of increased incidence of adverse reactions, including central nervous system (CNS) and cardiovascular adverse reactions [see *Warnings and Precautions (5.2, 5.3)*, *Adverse Reactions (6.1)*, and *Clinical Pharmacology (12.3)*]. Titration increments should not exceed those shown in Table 2.

Table 2: Alternate Initial Dosing Regimen to Achieve the Maintenance Dosage in a Shorter Timeframe if Clinically Indicated*

Age and Body Weight	Alternate Initial Dosage	Titration Regimen	Maintenance Dosage
Adults (17 years and older)	<u>Single loading dose:</u> 200 mg <u>12 hours later initiate:</u> 100 mg twice daily (200 mg per day)	Increase by 50 mg twice daily (100 mg per day) at weekly intervals, if needed	Monotherapy**: 150 mg to 200 mg twice daily (300 mg to 400 mg per day) Adjunctive Therapy: 100 mg to 200 mg twice daily (200 mg to 400 mg per day)

*when not specified, the dosage is the same for monotherapy for partial-onset seizures and adjunctive therapy for partial-onset seizures or primary generalized tonic-clonic seizures.

**Monotherapy for partial-onset seizures only

Additional pediatric use information is approved for UCB, Inc.'s VIMPAT® (lacosamide) oral solution. However, due to UCB, Inc.'s marketing exclusivity rights, this drug product is not labeled with that information.

2.3 Converting From a Single Antiepileptic (AED) to Lacosamide Monotherapy for the Treatment of Partial-Onset Seizures

For patients who are already on a single AED and will convert to lacosamide monotherapy, withdrawal of the concomitant AED should not occur until the therapeutic dosage of lacosamide is achieved and has been administered for at least 3 days. A gradual withdrawal of the concomitant AED over at least 6 weeks is recommended.

2.4 Dosage Information for Patients with Renal Impairment

For patients with mild to moderate renal impairment, no dosage adjustment is necessary. For patients with severe renal impairment [creatinine clearance (CL_{CR}) less than 30 mL/min as estimated by the Cockcroft-Gault equation for adults; CL_{CR} less than 30 mL/min/1.73m² as estimated by the Schwartz equation for pediatric patients] or end-stage renal disease, a reduction of 25% of the maximum dosage is recommended.

In all patients with renal impairment, dose initiation and titration should be based on clinical response and tolerability.

Hemodialysis

Lacosamide is effectively removed from plasma by hemodialysis. Following a 4-hour hemodialysis treatment, dosage supplementation of up to 50% should be considered.

Concomitant Strong CYP3A4 or CYP2C9 Inhibitors

Dose reduction may be necessary in patients with renal impairment who are taking strong inhibitors of CYP3A4 and CYP2C9 [see *Drug Interactions (7.1)*, *Use in Specific Populations (8.6)*, and *Clinical Pharmacology (12.3)*].

2.5 Dosage Information for Patients with Hepatic Impairment

For patients with mild or moderate hepatic impairment, a reduction of 25% of the maximum dosage is recommended. The dose initiation and titration should be based on clinical response and tolerability in patients with hepatic impairment.

Lacosamide use is not recommended in patients with severe hepatic impairment.

Concomitant Strong CYP3A4 and CYP2C9 Inhibitors

Dose reduction may be necessary in patients with hepatic impairment who are taking strong inhibitors of CYP3A4 and CYP2C9 [see *Drug Interactions (7.1)*, *Use in Specific Populations (8.7)*, and *Clinical Pharmacology (12.3)*].

2.6 Administration Instructions for Lacosamide Oral Solution

Lacosamide oral solution may be taken with or without food.

Lacosamide Oral Solution

A calibrated measuring device is recommended to measure and deliver the prescribed dose accurately. A household teaspoon or tablespoon is not an adequate measuring device.

Lacosamide oral solution may also be administered using a nasogastric tube or gastrostomy tube.

Discard any unused lacosamide oral solution remaining after 6 months of first opening

the bottle.

2.8 Discontinuation of Lacosamide Oral Solution

When discontinuing lacosamide, a gradual withdrawal over at least 1 week is recommended [see *Warnings and Precautions (5.5)*].

3 DOSAGE FORMS AND STRENGTHS

Lacosamide Oral Solution, USP

- 10 mg/mL: clear, colorless to yellow or yellow-brown, strawberry-flavored liquid

4 CONTRAINDICATIONS

None.

5 WARNINGS AND PRECAUTIONS

5.1 Suicidal Behavior and Ideation

Antiepileptic drugs (AEDs), including lacosamide, increase the risk of suicidal thoughts or behavior in patients taking these drugs for any indication. Patients treated with any AED for any indication should be monitored for the emergence or worsening of depression, suicidal thoughts or behavior, and/or any unusual changes in mood or behavior.

Pooled analyses of 199 placebo-controlled clinical trials (mono- and adjunctive therapy) of 11 different AEDs showed that patients randomized to one of the AEDs had approximately twice the risk (adjusted Relative Risk 1.8, 95% CI:1.2, 2.7) of suicidal thinking or behavior compared to patients randomized to placebo. In these trials, which had a median treatment duration of 12 weeks, the estimated incidence of suicidal behavior or ideation among 27,863 AED-treated patients was 0.43%, compared to 0.24% among 16,029 placebo-treated patients, representing an increase of approximately one case of suicidal thinking or behavior for every 530 patients treated. There were four suicides in drug-treated patients in the trials and none in placebo-treated patients, but the number of events is too small to allow any conclusion about drug effect on suicide.

The increased risk of suicidal thoughts or behavior with AEDs was observed as early as one week after starting treatment with AEDs and persisted for the duration of treatment assessed. Because most trials included in the analysis did not extend beyond 24 weeks, the risk of suicidal thoughts or behavior beyond 24 weeks could not be assessed.

The risk of suicidal thoughts or behavior was generally consistent among drugs in the data analyzed. The finding of increased risk with AEDs of varying mechanisms of action and across a range of indications suggests that the risk applies to all AEDs used for any indication. The risk did not vary substantially by age (5 to 100 years) in the clinical trials analyzed.

Table 3 shows absolute and relative risk by indication for all evaluated AEDs.

Table 3: Risk by Indication for Antiepileptic Drugs in the Pooled Analysis

Indication	Placebo Patients with Events Per 1,000 Patients	Drug Patients with Events Per 1,000 Patients	Relative Risk: Incidence of Events in Drug Patients/Incidence in Placebo Patients	Risk Difference: Additional Drug Patients with Events Per 1,000 Patients
Epilepsy	1.0	3.4	3.5	2.4
Psychiatric	5.7	8.5	1.5	2.9
Other	1.0	1.8	1.9	0.9
Total	2.4	4.3	1.8	1.9

The relative risk for suicidal thoughts or behavior was higher in clinical trials for epilepsy than in clinical trials for psychiatric or other conditions, but the absolute risk differences were similar.

Anyone considering prescribing lacosamide or any other AED must balance this risk with the risk of untreated illness. Epilepsy and many other illnesses for which antiepileptics are prescribed are themselves associated with morbidity and mortality and an increased risk of suicidal thoughts and behavior. Should suicidal thoughts and behavior emerge during treatment, the prescriber needs to consider whether the emergence of these symptoms in any given patient may be related to the illness being treated.

5.2 Dizziness and Ataxia

Lacosamide may cause dizziness and ataxia in adult and pediatric patients. In adult patients with partial-onset seizures taking 1 to 3 concomitant AEDs, dizziness was experienced by 25% of patients randomized to the recommended doses (200 to 400 mg/day) of lacosamide (compared with 8% of placebo patients) and was the adverse reaction most frequently leading to discontinuation (3%). Ataxia was experienced by 6% of patients randomized to the recommended doses (200 to 400 mg/day) of lacosamide (compared to 2% of placebo patients). The onset of dizziness and ataxia was most commonly observed during titration. There was a substantial increase in these adverse reactions at doses higher than 400 mg/day [see *Adverse Reactions (6.1)*].

If a loading dose is clinically indicated, administer with medical supervision because of the possibility of increased incidence of adverse reactions, including CNS adverse reactions such as dizziness and ataxia.

5.3 Cardiac Rhythm and Conduction Abnormalities

PR Interval Prolongation, Atrioventricular Block, and Ventricular Tachyarrhythmia

Dose-dependent prolongations in PR interval with lacosamide have been observed in clinical studies in adult patients and in healthy volunteers [see *Clinical Pharmacology (12.2)*]. In adjunctive clinical trials in adult patients with partial-onset seizures, asymptomatic first-degree atrioventricular (AV) block was observed as an adverse reaction in 0.4% (4/944) of patients randomized to receive lacosamide and 0% (0/364) of patients randomized to receive placebo. One case of profound bradycardia was observed in a patient during a 15-minute infusion of 150 mg lacosamide. When lacosamide is given with other drugs that prolong the PR interval, further PR prolongation is possible.

In the post-marketing setting, there have been reports of cardiac arrhythmias in patients treated with lacosamide, including bradycardia, AV block, and ventricular tachyarrhythmia, which have rarely resulted in asystole, cardiac arrest, and death. Most, although not all, cases have occurred in patients with underlying proarrhythmic conditions, or in those taking concomitant medications that affect cardiac conduction or prolong the PR interval. These events have occurred with both oral and intravenous routes of administration and at prescribed doses as well as in the setting of overdose [see *Overdosage (10)*]. In all patients for whom a loading dose is clinically indicated, administer the loading dose with medical supervision because of the possibility of increased incidence of adverse reactions, including cardiovascular adverse reactions.

Lacosamide should be used with caution in patients with underlying proarrhythmic conditions such as known cardiac conduction problems (e.g., marked first-degree AV block, second-degree or higher AV block and sick sinus syndrome without pacemaker), severe cardiac disease (such as myocardial ischemia or heart failure, or structural heart disease), and cardiac sodium channelopathies (e.g., Brugada Syndrome). Lacosamide should also be used with caution in patients on concomitant medications that affect cardiac conduction, including sodium channel blockers, beta-blockers, calcium channel blockers, potassium channel blockers, and medications that prolong the PR interval [see *Drug Interactions (7.2)*]. In such patients, obtaining an ECG before beginning lacosamide, and after lacosamide is titrated to steady-state maintenance dose, is recommended. In addition, these patients should be closely monitored if they are administered lacosamide through the intravenous route [see *Adverse Reactions (6.1)* and *Drug Interactions (7.2)*].

Atrial Fibrillation and Atrial Flutter

In the short-term investigational trials of lacosamide in adult patients with partial-onset seizures there were no cases of atrial fibrillation or flutter. Both atrial fibrillation and atrial flutter have been reported in open label partial-onset seizure trials and in post-marketing experience. In adult patients with diabetic neuropathy, for which lacosamide is not indicated, 0.5% of patients treated with lacosamide experienced an adverse reaction of atrial fibrillation or atrial flutter, compared to 0% of placebo-treated patients. Lacosamide administration may predispose to atrial arrhythmias (atrial fibrillation or flutter), especially in patients with diabetic neuropathy and/or cardiovascular disease.

5.4 Syncope

In the short-term controlled trials of lacosamide in adult patients with partial-onset seizures with no significant system illnesses, there was no increase in syncope compared to placebo. In the short-term controlled trials in adult patients with diabetic neuropathy, for which lacosamide is not indicated, 1.2% of patients who were treated with lacosamide reported an adverse reaction of syncope or loss of consciousness, compared with 0% of placebo-treated patients with diabetic neuropathy. Most of the cases of syncope were observed in patients receiving doses above 400 mg/day. The cause of syncope was not determined in most cases. However, several were associated with either changes in orthostatic blood pressure, atrial flutter/fibrillation (and associated tachycardia), or bradycardia. Cases of syncope have also been observed in open-label clinical partial-onset seizure studies in adult and pediatric patients. These cases were associated with a history of risk factors for cardiac disease and the use of drugs that slow AV conduction.

5.5 Withdrawal of Antiepileptic Drugs (AEDs)

As with all AEDs, lacosamide should be withdrawn gradually (over a minimum of 1 week) to minimize the potential of increased seizure frequency in patients with seizure disorders.

5.6 Drug Reaction with Eosinophilia and Systemic Symptoms (DRESS)/Multi-Organ Hypersensitivity

Drug Reaction with Eosinophilia and Systemic Symptoms (DRESS), also known as multi-organ hypersensitivity, has been reported in patients taking antiepileptic drugs, including lacosamide. Some of these events have been fatal or life-threatening. DRESS typically, although not exclusively, presents with fever, rash, lymphadenopathy and/or facial swelling, in association with other organ system involvement, such as hepatitis, nephritis, hematologic abnormalities, myocarditis, or myositis, sometimes resembling an acute viral infection. Eosinophilia is often present. This disorder is variable in its expression, and other organ systems not noted here may be involved. It is important to note that early manifestations of hypersensitivity (e.g., fever, lymphadenopathy) may be present even though rash is not evident. If such signs or symptoms are present, the patient should be evaluated immediately. Lacosamide should be discontinued if an alternative etiology for the signs or symptoms cannot be established.

6 ADVERSE REACTIONS

The following serious adverse reactions are described below and elsewhere in the labeling:

- Suicidal Behavior and Ideation [see Warnings and Precautions (5.1)]
- Dizziness and Ataxia [see Warnings and Precautions (5.2)]
- Cardiac Rhythm and Conduction Abnormalities [see Warnings and Precautions (5.3)]
- Syncope [see Warnings and Precautions (5.4)]
- Drug Reaction with Eosinophilia and Systemic Symptoms (DRESS)/Multiorgan Hypersensitivity Reactions [see Warnings and Precautions (5.6)]

6.1 Clinical Trials Experience

Because clinical trials are conducted under widely varying conditions, adverse reaction rates observed in the clinical trials of a drug cannot be directly compared to rates in the clinical trials of another drug and may not reflect the rates observed in practice.

Lacosamide Oral Solution in Adults

In the premarketing development of adjunctive therapy for partial-onset seizures, 1,327 adult patients received lacosamide in controlled and uncontrolled trials, of whom 1,000 were treated for longer than 6 months, and 852 for longer than 12 months. The monotherapy development program for partial-onset seizures included 425 adult patients, 310 of whom were treated for longer than 6 months, and 254 for longer than 12 months.

Partial-Onset Seizures

Monotherapy Historical-Control Trial (Study 1)

In the monotherapy trial for partial-onset seizures, 16% of patients randomized to

receive lacosamide at the recommended doses of 300 and 400 mg/day discontinued from the trial as a result of an adverse reaction. The adverse reaction most commonly ($\geq 1\%$ on lacosamide) leading to discontinuation was dizziness.

Adverse reactions that occurred in this study were generally similar to those that occurred in adjunctive placebo-controlled studies. One adverse reaction, insomnia, occurred at a rate of $\geq 2\%$ and was not reported at a similar rate in previous studies. This adverse reaction has also been observed in post-marketing experience [see *Adverse Reactions (6.2)*]. Because this study did not include a placebo control group, causality could not be established.

Dizziness, headache, nausea, somnolence, and fatigue all occurred at lower incidences during the AED Withdrawal Phase and Monotherapy Phase, compared with the Titration Phase [see *Clinical Studies (14.1)*].

Adjunctive Therapy Controlled Trials (Studies 2, 3, and 4)

In adjunctive therapy controlled clinical trials for partial-onset seizures, the rate of discontinuation as a result of an adverse reaction was 8% and 17% in patients randomized to receive lacosamide at the recommended doses of 200 mg/day and 400 mg/day, respectively, 29% at 600 mg/day (1.5 times greater than the maximum recommended dose), and 5% in patients randomized to receive placebo. The adverse reactions most commonly ($> 1\%$ on lacosamide and greater than placebo) leading to discontinuation were dizziness, ataxia, vomiting, diplopia, nausea, vertigo, and blurred vision.

Table 4 gives the incidence of adverse reactions that occurred in $\geq 2\%$ of adult patients with partial-onset seizures in the lacosamide total group and for which the incidence was greater than placebo.

Table 4: Adverse Reactions Incidence in Adjunctive Therapy Pooled, Placebo-Controlled Trials in Adult Patients with Partial-Onset Seizures (Studies 2, 3, and 4)

Adverse Reaction	Placebo N=3643 %	Lacosamide 200 mg/day N=270 %	Lacosamide 400 mg/day N=471 %	Lacosamide 600 mg/day* N=203 %	Lacosamide Total N=944 %
Ear and labyrinth disorder					
Vertigo	1	5	3	4	4
Eye disorders					
Diplopia	2	6	10	16	11
Blurred Vision	3	2	9	16	8
Gastrointestinal disorders					
Nausea	4	7	11	17	11
Vomiting	3	6	9	16	9
Diarrhea	3	3	5	4	4
General disorders and administration site conditions					
Fatigue	6	7	7	15	9
Gait disturbance	<1	<1	2	4	2

Asthenia	1	2	2	4	2
Injury, poisoning and procedural complications					
Contusion	3	3	4	2	3
Skin laceration	2	2	3	3	3
Nervous system disorders					
Dizziness	8	16	30	53	31
Headache	9	11	14	12	13
Ataxia	2	4	7	15	8
Somnolence	5	5	8	8	7
Tremor	4	4	6	12	7
Nystagmus	4	2	5	10	5
Balance disorder	0	1	5	6	4
Memory impairment	2	1	2	6	2
Psychiatric disorders					
Depression	1	2	2	2	2
Skin and subcutaneous disorders					
Pruritus	1	3	2	3	2
*600 mg dose is 1.5 times greater than the maximum recommended dose.					

The overall adverse reaction rate was similar in male and female patients. Although there were few non-Caucasian patients, no differences in the incidences of adverse reactions compared to Caucasian patients were observed.

Lacosamide Oral Solution in Pediatric Patients

Safety of lacosamide was evaluated in clinical studies of pediatric patients 4 to less than 17 years of age for the treatment of partial-onset seizures. Across studies in pediatric patients with partial-onset seizures, 328 patients 4 to less than 17 years of age received lacosamide oral solution or tablet, of whom 148 received lacosamide for at least 1 year. Adverse reactions reported in clinical studies of pediatric patients 4 to less than 17 years of age were similar to those seen in adult patients.

Primary Generalized Tonic-Clonic Seizures in Patients (4 Years of Age and Older) Adjunctive Therapy Trial (Study 5)

In the adjunctive therapy placebo-controlled trial for primary generalized tonic-clonic seizures, adverse reactions that occurred in the study were generally similar to those that occurred in partial-onset seizure placebo-controlled studies. The most common adverse reactions ($\geq 10\%$ on lacosamide) reported in patients treated with lacosamide were dizziness (23%), somnolence (17%), headache (14%), and nausea (10%), compared to 7%, 14%, 10%, and 6%, respectively, of patients who received placebo. Additionally, an adverse reaction not previously reported of myoclonic epilepsy was reported in 3% of patients treated with lacosamide compared to 1% of patients who received placebo. It is also noted that 2 patients receiving lacosamide had acute worsening of seizures shortly after drug initiation, including one episode of status epilepticus, compared to no patients receiving placebo.

Laboratory Abnormalities

Abnormalities in liver function tests have occurred in controlled trials with lacosamide in adult patients with partial-onset seizures who were taking 1 to 3 concomitant anti-epileptic drugs. Elevations of ALT to ≥ 3 x ULN occurred in 0.7% (7/935) of lacosamide patients and 0% (0/356) of placebo patients. One case of hepatitis with transaminases > 20 x ULN occurred in one healthy subject 10 days after lacosamide treatment completion, along with nephritis (proteinuria and urine casts). Serologic studies were negative for viral hepatitis. Transaminases returned to normal within one month without specific treatment. At the time of this event, bilirubin was normal. The hepatitis/nephritis was interpreted as a delayed hypersensitivity reaction to lacosamide.

Other Adverse Reactions

The following is a list of adverse reactions reported by patients treated with lacosamide in all clinical trials in adult patients, including controlled trials and long-term open-label extension trials. Adverse reactions addressed in other tables or sections are not listed here.

Blood and lymphatic system disorders: neutropenia, anemia

Cardiac disorders: palpitations

Ear and labyrinth disorders: tinnitus

Gastrointestinal disorders: constipation, dyspepsia, dry mouth, oral hypoesthesia

General disorders and administration site conditions: irritability, pyrexia, feeling drunk

Injury, poisoning, and procedural complications: fall

Musculoskeletal and connective tissue disorders: muscle spasms

Nervous system disorders: paresthesia, cognitive disorder, hypoesthesia, dysarthria, disturbance in attention, cerebellar syndrome

Psychiatric disorders: confusional state, mood altered, depressed mood

Additional pediatric use information is approved for UCB, Inc.'s VIMPAT[®] (lacosamide) oral solution. However, due to UCB, Inc.'s marketing exclusivity rights, this drug product is not labeled with that information.

6.2 Post-marketing Experience

The following adverse reactions have been identified during post-approval use of lacosamide. Because these reactions are reported voluntarily from a population of uncertain size, it is not always possible to reliably estimate their frequency or establish a causal relationship to drug exposure.

Blood and lymphatic system disorders: Agranulocytosis

Psychiatric disorders: Aggression, agitation, hallucination, insomnia, psychotic disorder

Skin and subcutaneous tissue disorders: Angioedema, rash, urticaria, Stevens-Johnson syndrome, toxic epidermal necrolysis.

Neurologic disorders: Dyskinesia, new or worsening seizures

7 DRUG INTERACTIONS

7.1 Strong CYP3A4 or CYP2C9 Inhibitors

Patients with renal or hepatic impairment who are taking strong inhibitors of CYP3A4 and CYP2C9 may have a significant increase in exposure to lacosamide. Dose reduction may be necessary in these patients.

7.2 Concomitant Medications that Affect Cardiac Conduction

Lacosamide should be used with caution in patients on concomitant medications that affect cardiac conduction (sodium channel blockers, beta-blockers, calcium channel blockers, potassium channel blockers) including those that prolong PR interval (including sodium channel blocking AEDs), because of a risk of AV block, bradycardia, or ventricular tachyarrhythmia. In such patients, obtaining an ECG before beginning lacosamide, and after lacosamide is titrated to steady-state, is recommended. In addition, these patients should be closely monitored if they are administered lacosamide through the intravenous route [see *Warnings and Precautions (5.3)*].

8 USE IN SPECIFIC POPULATIONS

8.1 Pregnancy

Pregnancy Exposure Registry

There is a pregnancy exposure registry that monitors pregnancy outcomes in women exposed to antiepileptic drugs (AEDs), such as lacosamide, during pregnancy. Encourage women who are taking lacosamide during pregnancy to enroll in the North American Antiepileptic Drug (NAAED) pregnancy registry by calling 1-888-233-2334 or visiting <http://www.aedpregnancyregistry.org/>.

Risk Summary

Available data from the North American Antiepileptic Drug (NAAED) pregnancy registry, a prospective cohort study, case reports, and a case series with lacosamide use in pregnant women are insufficient to identify a drug-associated risk of major birth defects, miscarriage or other adverse maternal or fetal outcomes. Lacosamide produced developmental toxicity (increased embryofetal and perinatal mortality, growth deficit) in rats following administration during pregnancy. Developmental neurotoxicity was observed in rats following administration during a period of postnatal development corresponding to the third trimester of human pregnancy. These effects were observed at doses associated with clinically relevant plasma exposures (see *Data*).

The background risk of major birth defects and miscarriage for the indicated population is unknown. All pregnancies have a background risk of birth defect, loss, or other adverse outcomes. In the U.S. general population the estimated background risk of major birth defects and miscarriage in clinically recognized pregnancies is 2% to 4% and 15% to 20%, respectively.

Data

Animal Data

Oral administration of lacosamide to pregnant rats (20, 75, or 200 mg/kg/day) and rabbits (6.25, 12.5, or 25 mg/kg/day) during the period of organogenesis did not

produce any effects on the incidences of fetal structural abnormalities. However, the maximum doses evaluated were limited by maternal toxicity in both species and embryofetal death in rats. These doses were associated with maternal plasma lacosamide exposures (AUC) approximately 2 and 1 times (rat and rabbit, respectively) that in humans at the maximum recommended human dose (MRHD) of 400 mg/day.

In two studies in which lacosamide (25, 70, or 200 mg/kg/day and 50, 100, or 200 mg/kg/day) was orally administered to rats throughout pregnancy and lactation, increased perinatal mortality and decreased body weights in the offspring were observed at the highest dose tested. The no-effect dose for pre- and postnatal developmental toxicity in rats (70 mg/kg/day) was associated with a maternal plasma lacosamide AUC similar to that in humans at the MRHD.

Oral administration of lacosamide (30, 90, or 180 mg/kg/day) to rats during the neonatal and juvenile periods of development resulted in decreased brain weights and long-term neurobehavioral changes (altered open field performance, deficits in learning and memory). The early postnatal period in rats is generally thought to correspond to late pregnancy in humans in terms of brain development. The no-effect dose for developmental neurotoxicity in rats was associated with a plasma lacosamide AUC less than that in humans at the MRHD.

In Vitro Data

Lacosamide has been shown *in vitro* to interfere with the activity of collapsin response mediator protein-2 (CRMP-2), a protein involved in neuronal differentiation and control of axonal outgrowth. Potential adverse effects on CNS development related to this activity cannot be ruled out.

8.2 Lactation

Risk Summary

Data from published literature indicate that lacosamide is present in human milk. There are reports of increased

sleepiness in breastfed infants exposed to lacosamide (*see Clinical Considerations*). There is no information on the effects of lacosamide on milk production.

The developmental and health benefits of breastfeeding should be considered along with the mother's clinical need for lacosamide and any potential adverse effects on the breastfed infant from lacosamide or from the underlying maternal condition.

Clinical Considerations

Monitor infants exposed to lacosamide through breastmilk for excess sedation.

8.4 Pediatric Use

Partial-Onset Seizures

Safety and effectiveness of lacosamide for the treatment of partial-onset seizures have been established in pediatric patients 4 years to less than 17 years of age. Use of lacosamide in this age group is supported by evidence from adequate and well-controlled studies of lacosamide in adults with partial-onset seizures, pharmacokinetic data from adult and pediatric patients, and safety data in 328 pediatric patients 4 years

to less than 17 years of age [see *Adverse Reactions (6.1)*, *Clinical Pharmacology (12.3)*, and *Clinical Studies (14.1, 14.2)*].

Safety and effectiveness in pediatric patients below 1 month of age have not been established.

Primary Generalized Tonic-Clonic Seizures

Safety and effectiveness of lacosamide as adjunctive therapy in the treatment of primary generalized tonic-clonic seizures in pediatric patients with idiopathic generalized epilepsy 4 years of age and older was established in a 24-week double-blind, randomized, placebo-controlled, parallel-group, multi-center study (Study 5), which included 37 pediatric patients 4 years to less than 17 years of age [see *Adverse Reactions (6.1)* and *Clinical Studies (14.3)*].

Safety and effectiveness in pediatric patients below the age of 4 years have not been established.

Animal Data

Lacosamide has been shown *in vitro* to interfere with the activity of collapsin response mediator protein-2 (CRMP-2), a protein involved in neuronal differentiation and control of axonal outgrowth. Potential related adverse effects on CNS development cannot be ruled out. Administration of lacosamide to rats during the neonatal and juvenile periods of postnatal development (approximately equivalent to neonatal through adolescent development in humans) resulted in decreased brain weights and long-term neurobehavioral changes (altered open field performance, deficits in learning and memory). The no-effect dose for developmental neurotoxicity in rats was associated with a plasma lacosamide exposure (AUC) less than that in humans at the maximum recommended human dose of 400 mg/day.

Additional pediatric use information is approved for UCB, Inc.'s VIMPAT® (lacosamide) oral solution. However, due to UCB, Inc.'s marketing exclusivity rights, this drug product is not labeled with that information.

8.5 Geriatric Use

There were insufficient numbers of elderly patients enrolled in partial-onset seizure trials (n=18) to adequately determine whether they respond differently from younger patients.

No lacosamide dose adjustment based on age is necessary. In elderly patients, dose titration should be performed with caution, usually starting at the lower end of the dosing range, reflecting the greater frequency of decreased hepatic function, decreased renal function, increased cardiac conduction abnormalities, and polypharmacy [see *Dosage and Administration (2.1, 2.4, 2.5)* and *Clinical Pharmacology (12.3)*].

8.6 Renal Impairment

No dose adjustment is necessary in patients with mild to moderate renal impairment ($CL_{CR} \geq 30$ mL/min). In patients with severe renal impairment ($CL_{CR} < 30$ mL/min as estimated by the Cockcroft-Gault equation for adults; $CL_{CR} < 30$ mL/min/1.73m² as estimated by the Schwartz equation for pediatric patients) and in those with end-stage renal disease, a reduction of 25% of the maximum dosage is recommended [see *Dosage and Administration (2.4)* and *Clinical Pharmacology (12.3)*].

In all patients with renal impairment, dose initiation and titration should be based on clinical response and tolerability.

Lacosamide is effectively removed from plasma by hemodialysis. Dosage supplementation of up to 50% following hemodialysis should be considered.

8.7 Hepatic Impairment

For adult and pediatric patients with mild to moderate hepatic impairment, a reduction of 25% of the maximum dosage is recommended. Patients with mild to moderate hepatic impairment should be observed closely for adverse reactions, and dose initiation and titration should be based on clinical response and tolerability [see *Dosage and Administration (2.5)*, *Clinical Pharmacology (12.3)*].

The pharmacokinetics of lacosamide has not been evaluated in severe hepatic impairment. Lacosamide use is not recommended in patients with severe hepatic impairment.

9 DRUG ABUSE AND DEPENDENCE

9.1 Controlled Substance

Lacosamide oral solution contains lacosamide, a Schedule V controlled substance.

9.2 Abuse

Abuse is the intentional, non-therapeutic use of a drug, even once, for its desirable psychological or physiological effects. In a human abuse potential study, single doses of 200 mg (equal to the maximum single dosage) and 800 mg lacosamide (equal to twice the recommended daily maintenance dosage) produced euphoria-type subjective responses that differentiated statistically from placebo; at 800 mg, these euphoria-type responses were statistically indistinguishable from those produced by alprazolam, a Schedule IV drug. The duration of the euphoria-type responses following lacosamide was less than that following alprazolam. A high rate of euphoria was also reported as an adverse event in the human abuse potential study following single doses of 800 mg lacosamide (15% [5/34]) compared to placebo (0%) and in two pharmacokinetic studies following single and multiple doses of 300 mg to 800 mg lacosamide (ranging from 6% [2/33] to 25% [3/12]) compared to placebo (0%). However, the rate of euphoria reported as an adverse event in the lacosamide development program at therapeutic doses was less than 1%.

9.3 Dependence

Physical dependence is a state that develops as a result of physiological adaptation in response to repeated drug use, manifested by withdrawal signs and symptoms after abrupt discontinuation or a significant dose reduction of a drug. Abrupt termination of lacosamide in clinical trials with diabetic neuropathic pain patients produced no signs or symptoms that are associated with a withdrawal syndrome indicative of physical dependence. However, psychological dependence cannot be excluded due to the ability of lacosamide to produce euphoria-type adverse events in humans.

10 OVERDOSAGE

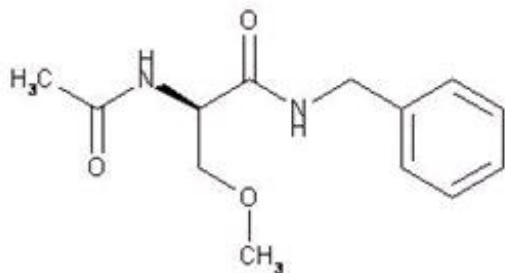
Events reported after an intake of more than 800 mg (twice the maximum recommended daily dosage) of lacosamide include dizziness, nausea, and seizures (generalized tonic-clonic seizures, status epilepticus). Cardiac conduction disorders, confusion, decreased level of consciousness, cardiogenic shock, cardiac arrest, and coma have also been observed. Fatalities have occurred following lacosamide overdoses of several grams.

There is no specific antidote for overdose with lacosamide. Standard decontamination procedures should be followed. General supportive care of the patient is indicated including monitoring of vital signs and observation of the clinical status of patient. A Certified Poison Control Center should be contacted for up to date information on the management of overdose with lacosamide.

Standard hemodialysis procedures result in significant clearance of lacosamide (reduction of systemic exposure by 50% in 4 hours). Hemodialysis may be indicated based on the patient's clinical state or in patients with significant renal impairment.

11 DESCRIPTION

The chemical name of lacosamide, USP, the single (R)-enantiomer, is (R)-2-acetamido-N-benzyl-3-methoxypropionamide (IUPAC). Lacosamide, USP is a functionalized amino acid. Its molecular formula is $C_{13}H_{18}N_2O_3$ and its molecular weight is 250.30. The chemical structure is:



Lacosamide, USP is a white to light yellow powder. It is sparingly soluble in water and slightly soluble in acetonitrile and ethanol.

11.3 Lacosamide Oral Solution, USP

Lacosamide oral solution, USP contains 10 mg of lacosamide, USP per mL. The inactive ingredients are acesulfame potassium, anhydrous citric acid, flavor, glycerin, methylparaben, polyethylene glycol, purified water, sodium carboxymethylcellulose, sodium chloride and sorbitol solution. Sodium hydroxide or hydrochloric acid may be added for adjustment of pH.

12 CLINICAL PHARMACOLOGY

12.1 Mechanism of Action

The precise mechanism by which lacosamide exerts its antiepileptic effects in humans remains to be fully elucidated. *In vitro* electrophysiological studies have shown that lacosamide selectively enhances slow inactivation of voltage-gated sodium channels, resulting in stabilization of hyperexcitable neuronal membranes and inhibition of repetitive neuronal firing.

12.2 Pharmacodynamics

A pharmacokinetic-pharmacodynamic (efficacy) analysis was performed based on the pooled data from the 3 efficacy trials for partial-onset seizures. Lacosamide exposure is correlated with the reduction in seizure frequency. However, doses above 400 mg/day do not appear to confer additional benefit in group analyses.

Cardiac Electrophysiology

Electrocardiographic effects of lacosamide were determined in a double-blind, randomized clinical pharmacology trial of 247 healthy subjects. Chronic oral doses of 400 and 800 mg/day (equal to and two times the maximum daily recommended dose, respectively) were compared with placebo and a positive control (400 mg moxifloxacin). Lacosamide did not prolong QTc interval and did not have a dose-related or clinically important effect on QRS duration. Lacosamide produced a small, dose-related increase in mean PR interval. At steady-state, the time of the maximum observed mean PR interval corresponded with t_{max} . The placebo-subtracted maximum increase in PR interval (at t_{max}) was 7.3 ms for the 400 mg/day group and 11.9 ms for the 800 mg/day group. For patients who participated in the controlled trials, the placebo-subtracted mean maximum increase in PR interval for a 400 mg/day lacosamide dose was 3.1 ms in patients with partial-onset seizures and 9.4 ms for patients with diabetic neuropathy.

12.3 Pharmacokinetics

The pharmacokinetics of lacosamide have been studied in healthy adult subjects (age range 18 to 87), adults with partial-onset seizures, adults with diabetic neuropathy, and subjects with renal and hepatic impairment. The pharmacokinetics of lacosamide are similar in healthy subjects, patients with partial-onset seizures, and patients with primary generalized tonic-clonic seizures.

Lacosamide is completely absorbed after oral administration with negligible first-pass effect with a high absolute bioavailability of approximately 100%. The maximum lacosamide plasma concentrations occur approximately 1 to 4 hour post-dose after oral dosing, and elimination half-life is approximately 13 hours. Steady-state plasma concentrations are achieved after 3 days of twice daily repeated administration. Pharmacokinetics of lacosamide are dose proportional (100 mg to 800 mg) and time invariant, with low inter- and intra-subject variability. Compared to lacosamide the major metabolite, O-desmethyl metabolite, has a longer T_{max} (0.5 to 12 hours) and elimination half-life (15 to 23 hours).

Absorption and Bioavailability

Lacosamide is completely absorbed after oral administration. The oral bioavailability of lacosamide tablets is approximately 100%. Food does not affect the rate and extent of absorption.

After intravenous administration, C_{max} is reached at the end of infusion. The 30- and 60-minute intravenous infusions are bioequivalent to the oral tablet. For the 15-minute

intravenous infusion, bioequivalence was met for $AUC_{(0-tz)}$ but not for C_{max} . The point estimate of C_{max} was 20% higher than C_{max} for oral tablet and the 90% CI for C_{max} exceeded the upper boundary of the bioequivalence range.

In a trial comparing the oral tablet with an oral solution containing 10 mg/mL lacosamide, bioequivalence between both formulations was shown.

A single loading dose of 200 mg approximates steady-state concentrations comparable to the 100 mg twice daily oral administration.

Distribution

The volume of distribution is approximately 0.6 L/kg and thus close to the volume of total body water. Lacosamide is less than 15% bound to plasma proteins.

Metabolism and Elimination

Lacosamide is primarily eliminated from the systemic circulation by renal excretion and biotransformation.

After oral and intravenous administration of 100 mg [^{14}C]-lacosamide approximately 95% of radioactivity administered was recovered in the urine and less than 0.5% in the feces. The major compounds excreted were unchanged lacosamide (approximately 40% of the dose), its O-desmethyl metabolite (approximately 30%), and a structurally unknown polar fraction (~20%). The plasma exposure of the major human metabolite, O-desmethyl-lacosamide, is approximately 10% of that of lacosamide. This metabolite has no known pharmacological activity.

The CYP isoforms mainly responsible for the formation of the major metabolite (O-desmethyl) are CYP3A4, CYP2C9, and CYP2C19. The elimination half-life of the unchanged drug is approximately 13 hours and is not altered by different doses, multiple dosing or intravenous administration.

There is no enantiomeric interconversion of lacosamide.

Specific Populations

Renal Impairment

Lacosamide and its major metabolite are eliminated from the systemic circulation primarily by renal excretion.

The AUC of lacosamide was increased approximately 25% in mildly (CL_{CR} 50 to 80 mL/min) and moderately (CL_{CR} 30 to 50 mL/min) and 60% in severely ($CL_{CR} \leq 30$ mL/min) renally impaired patients compared to subjects with normal renal function ($CL_{CR} > 80$ mL/min), whereas C_{max} was unaffected. Lacosamide is effectively removed from plasma by hemodialysis. Following a 4-hour hemodialysis treatment, AUC of lacosamide is reduced by approximately 50% [see *Dosage and Administration (2.4)*].

Hepatic Impairment

Lacosamide undergoes metabolism. Subjects with moderate hepatic impairment (Child-Pugh B) showed higher plasma concentrations of lacosamide (approximately 50% to 60% higher AUC compared to healthy subjects). The pharmacokinetics of lacosamide have not been evaluated in severe hepatic impairment [see *Dosage and Administration (2.5)*].

Pediatric Patients (4 Years to less than 17 Years of Age)

The pediatric pharmacokinetic profile of lacosamide was determined in a population pharmacokinetic analysis using sparse plasma concentration data obtained in two open-label studies in 79 pediatric patients with partial-onset seizures that included patients 4 years to less than 17 years of age who received oral solution or oral tablet formulations.

A weight based dosing regimen is necessary to achieve lacosamide exposures in pediatric patients 4 years to less than 17 years of age similar to those observed in adults treated at effective doses of lacosamide [see *Dosage and Administration (2.1)*]. For patients weighing 11 kg, 28.9 kg (the mean population body weight), and 70 kg, the typical plasma half-life ($t_{1/2}$) is 7.4 hours, 10.6 hours, and 14.8 hours, respectively. Steady-state plasma concentrations are achieved after 3 days of twice daily repeated administration.

The pharmacokinetics of lacosamide in pediatric patients are similar when used as monotherapy or as adjunctive therapy for the treatment of partial-onset seizures and as adjunctive therapy for the treatment of primary generalized tonic-clonic seizures.

Additional pediatric use information is approved for UCB, Inc.'s VIMPAT® (lacosamide) oral solution. However, due to UCB, Inc.'s marketing exclusivity rights, this drug product is not labeled with that information.

Geriatric Patients

In the elderly (>65 years), dose and body-weight normalized AUC and C_{max} is about 20% increased compared to young subjects (18 to 64 years). This may be related to body weight and decreased renal function in elderly subjects.

Gender

Lacosamide clinical trials indicate that gender does not have a clinically relevant influence on the pharmacokinetics of lacosamide.

Race

There are no clinically relevant differences in the pharmacokinetics of lacosamide between Asian, Black, and Caucasian subjects.

CYP2C19 Polymorphism

There are no clinically relevant differences in the pharmacokinetics of lacosamide between CYP2C19 poor metabolizers and extensive metabolizers. Results from a trial in poor metabolizers (PM) (N=4) and extensive metabolizers (EM) (N=8) of cytochrome P450 (CYP) 2C19 showed that lacosamide plasma concentrations were similar in PMs and EMs, but plasma concentrations and the amount excreted into urine of the O-desmethyl metabolite were about 70% reduced in PMs compared to EMs.

Drug Interactions

In Vitro Assessment of Drug Interactions

In vitro metabolism studies indicate that lacosamide does not induce the enzyme activity of drug metabolizing cytochrome P450 isoforms CYP1A2, 2B6, 2C9, 2C19 and 3A4. Lacosamide did not inhibit CYP 1A1, 1A2, 2A6, 2B6, 2C8, 2C9, 2D6, 2E1, 3A4/5 at plasma concentrations observed in clinical studies.

In vitro data suggest that lacosamide has the potential to inhibit CYP2C19 at therapeutic concentrations. However, an *in vivo* study with omeprazole did not show an inhibitory

effect on omeprazole pharmacokinetics.

Lacosamide was not a substrate or inhibitor for P-glycoprotein.

Lacosamide is a substrate of CYP3A4, CYP2C9, and CYP2C19. Patients with renal or hepatic impairment who are taking strong inhibitors of CYP3A4 and CYP2C9 may have increased exposure to lacosamide.

Since < 15% of lacosamide is bound to plasma proteins, a clinically relevant interaction with other drugs through competition for protein binding sites is unlikely.

In Vivo Assessment of Drug Interactions

- Drug interaction studies with AEDs
 - Effect of lacosamide on concomitant AEDs

Lacosamide 400 mg/day had no influence on the pharmacokinetics of 600 mg/day valproic acid and 400 mg/day carbamazepine in healthy subjects.

The placebo-controlled clinical studies in patients with partial-onset seizures showed that steady-state plasma concentrations of levetiracetam, carbamazepine, carbamazepine epoxide, lamotrigine, topiramate, oxcarbazepine monohydroxy derivative (MHD), phenytoin, valproic acid, phenobarbital, gabapentin, clonazepam, and zonisamide were not affected by concomitant intake of lacosamide at any dose.

- Effect of concomitant AEDs on lacosamide

Drug-drug interaction studies in healthy subjects showed that 600 mg/day valproic acid had no influence on the pharmacokinetics of 400 mg/day lacosamide. Likewise, 400 mg/day carbamazepine had no influence on the pharmacokinetics of lacosamide in a healthy subject study. Population pharmacokinetics results in patients with partial-onset seizures showed small reductions (15% to 20% lower) in lacosamide plasma concentrations when lacosamide was co-administered with carbamazepine, phenobarbital or phenytoin.

- Drug-drug interaction studies with other drugs
 - Digoxin

There was no effect of lacosamide (400 mg/day) on the pharmacokinetics of digoxin (0.5 mg once daily) in a study in healthy subjects.

- Metformin

There were no clinically relevant changes in metformin levels following co-administration of lacosamide (400 mg/day).

Metformin (500 mg three times a day) had no effect on the pharmacokinetics of lacosamide (400 mg/day).

- Omeprazole

Omeprazole is a CYP2C19 substrate and inhibitor.

There was no effect of lacosamide (600 mg/day) on the pharmacokinetics of omeprazole (40 mg single dose) in healthy subjects. The data indicated that lacosamide had little *in vivo* inhibitory or inducing effect on CYP2C19.

Omeprazole at a dose of 40 mg once daily had no effect on the pharmacokinetics of

lacosamide (300 mg single dose). However, plasma levels of the O-desmethyl metabolite were reduced about 60% in the presence of omeprazole.

- Midazolam

Midazolam is a 3A4 substrate.

There was no effect of lacosamide (200 mg single dose or repeat doses of 400 mg/day given as 200 mg BID) on the pharmacokinetics of midazolam (single dose, 7.5 mg), indicating no inhibitory or inducing effects on CYP3A4.

- Oral Contraceptives

There was no influence of lacosamide (400 mg/day) on the pharmacodynamics and pharmacokinetics of an oral contraceptive containing 0.03 mg ethinylestradiol and 0.15 mg levonorgestrel in healthy subjects, except that a 20% increase in ethinylestradiol C_{max} was observed.

- Warfarin

Co-administration of lacosamide (400 mg/day) with warfarin (25 mg single dose) did not result in a clinically relevant change in the pharmacokinetic and pharmacodynamic effects of warfarin in a study in healthy male subjects.

13 NONCLINICAL TOXICOLOGY

13.1 Carcinogenesis, Mutagenesis, Impairment of Fertility

Carcinogenesis

There was no evidence of drug related carcinogenicity in mice or rats. Mice and rats received lacosamide once daily by oral administration for 104 weeks at doses producing plasma exposures (AUC) up to approximately 1 and 3 times, respectively, the plasma AUC in humans at the maximum recommended human dose (MRHD) of 400 mg/day.

Mutagenesis

Lacosamide was negative in an *in vitro* Ames test and an *in vivo* mouse micronucleus assay. Lacosamide induced a positive response in the *in vitro* mouse lymphoma assay.

Fertility

No adverse effects on male or female fertility or reproduction were observed in rats at doses producing plasma exposures (AUC) up to approximately 2 times the plasma AUC in humans at the MRHD.

14 CLINICAL STUDIES

14.1 Monotherapy in Patients with Partial-Onset Seizures

The efficacy of lacosamide in monotherapy was established in a historical-control, multicenter, randomized trial that included 425 patients, age 16 to 70 years, with partial-onset seizures (Study 1). To be included in Study 1, patients were required to be taking stable doses of 1 or 2 marketed antiepileptic drugs. This treatment continued into the 8 week baseline period. To remain in the study, patients were required to have at least 2

partial-onset seizures per 28 days during the 8 week baseline period. The baseline period was followed by a 3 week titration period, during which lacosamide was added to the ongoing antiepileptic regimen. This was followed by a 16- week maintenance period (i.e., a 6-week withdrawal period for background antiepileptic drugs, followed by a 10-week monotherapy period). Patients were randomized 3 to 1 to receive lacosamide 400 mg/day or lacosamide 300 mg/day. Treatment assignments were blinded. Response to treatment was based upon a comparison of the number of patients who met exit criteria during the maintenance phase, compared to historical controls. The historical control consisted of a pooled analysis of the control groups from 8 studies of similar design, which utilized a sub-therapeutic dose of an antiepileptic drug. Statistical superiority to the historical control was considered to be demonstrated if the upper limit from a 2-sided 95% confidence interval for the percentage of patients meeting exit criteria in patients receiving lacosamide remained below the lower 95% prediction limit of 65% derived from the historical control data.

The exit criteria were one or more of the following: (1) doubling of average monthly seizure frequency during any 28 consecutive days, (2) doubling of highest consecutive 2-day seizure frequency, (3) occurrence of a single generalized tonic-clonic seizure, (4) clinically significant prolongation or worsening of overall seizure duration, frequency, type or pattern considered by the investigator to require trial discontinuation, (5) status epilepticus or new onset of serial/cluster seizures. The study population profile appeared comparable to that of the historical control population.

For the lacosamide 400 mg/day group, the estimate of the percentage of patients meeting at least 1 exit criterion was 30% (95% CI: 25%, 36%). The upper limit of the 2-sided 95% CI (36%) was below the threshold of 65% derived from the historical control data, meeting the pre-specified criteria for efficacy. Lacosamide 300 mg/day also met the pre-specified criteria for efficacy.

14.2 Adjunctive Therapy in Patients with Partial-Onset Seizures

The efficacy of lacosamide as adjunctive therapy in partial-onset seizures was established in three 12-week, randomized, double-blind, placebo-controlled, multicenter trials in adult patients (Study 2, Study 3, and Study 4). Enrolled patients had partial-onset seizures with or without secondary generalization, and were not adequately controlled with 1 to 3 concomitant AEDs. During an 8-week baseline period, patients were required to have an average of ≥ 4 partial-onset seizures per 28 days with no seizure-free period exceeding 21 days. In these 3 trials, patients had a mean duration of epilepsy of 24 years and a median baseline seizure frequency ranging from 10 to 17 per 28 days. 84% of patients were taking 2 to 3 concomitant AEDs with or without concurrent vagal nerve stimulation.

Study 2 compared doses of lacosamide 200, 400, and 600 mg/day with placebo. Study 3 compared doses of lacosamide 400 and 600 mg/day with placebo. Study 4 compared doses of lacosamide 200 and 400 mg/day with placebo. In all three trials, following an 8-week baseline phase to establish baseline seizure frequency prior to randomization, patients were randomized and titrated to the randomized dose (a 1-step back-titration of lacosamide 100 mg/day or placebo was allowed in the case of intolerable adverse reactions at the end of the titration phase). During the titration phase, in all 3 adjunctive therapy trials, treatment was initiated at 100 mg/day (50 mg twice daily), and increased in weekly increments of 100 mg/day to the target dose. The titration phase lasted 6 weeks in Study 2 and Study 3, and 4 weeks in Study 4. In all three trials, the titration

phase was followed by a maintenance phase that lasted 12 weeks, during which patients were to remain on a stable dose of lacosamide.

A reduction in 28-day seizure frequency (baseline to maintenance phase), as compared to the placebo group, was the primary variable in all three adjunctive therapy trials. A statistically significant effect was observed with lacosamide treatment (Figure 1) at doses of 200 mg/day (Study 4), 400 mg/day (Studies 2, 3, and 4), and 600 mg/day (Studies 2 and 3).

Subset evaluations of lacosamide demonstrate no important differences in seizure control as a function of gender or race, although data on race was limited (about 10% of patients were non-Caucasian).

Figure 1 – Median Percent Reduction in Seizure Frequency per 28 days from Baseline to the Maintenance Phase by Dose

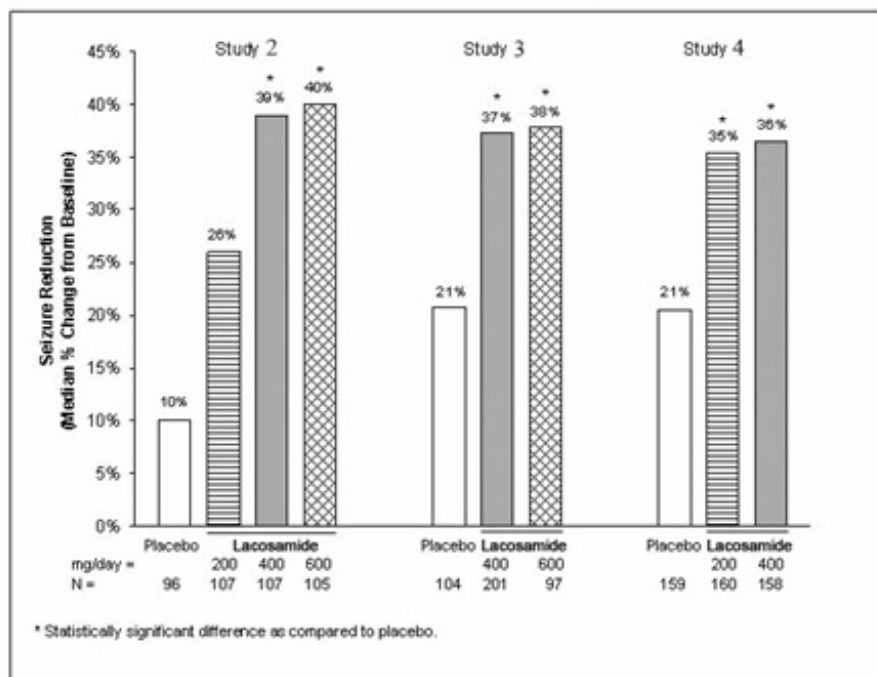
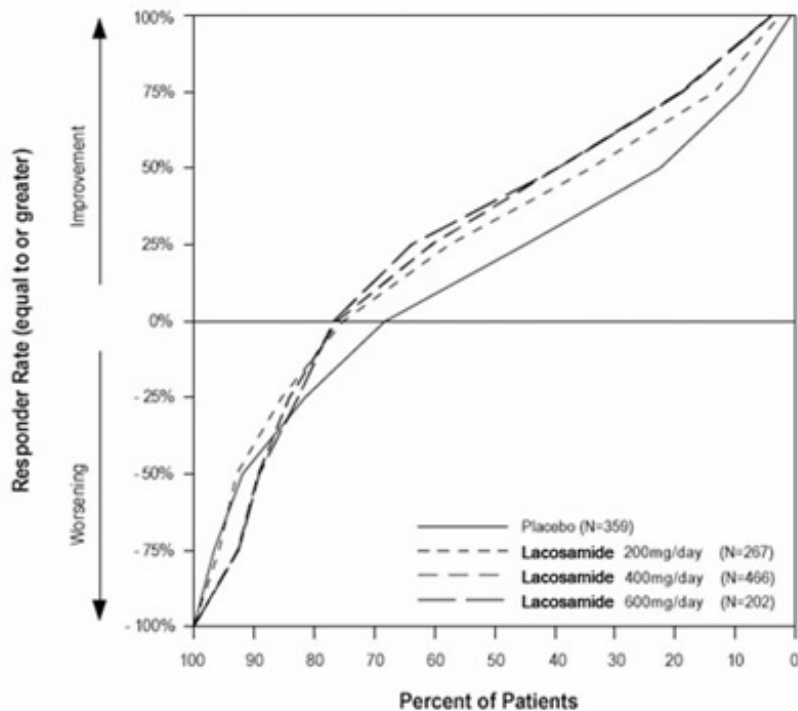


Figure 2 presents the percentage of patients (X-axis) with a percent reduction in partial seizure frequency (responder rate) from baseline to the maintenance phase at least as great as that represented on the Y-axis. A positive value on the Y-axis indicates an improvement from baseline (i.e., a decrease in seizure frequency), while a negative value indicates a worsening from baseline (i.e., an increase in seizure frequency). Thus, in a display of this type, a curve for an effective treatment is shifted to the left of the curve for placebo. The proportion of patients achieving any particular level of reduction in seizure frequency was consistently higher for the lacosamide groups, compared to the placebo group. For example, 40% of patients randomized to lacosamide (400 mg/day) experienced a 50% or greater reduction in seizure frequency, compared to 23% of patients randomized to placebo. Patients with an increase in seizure frequency > 100% are represented on the Y-axis as equal to or greater than -100%.

Figure 2 – Proportion of Patients by Responder Rate for Lacosamide and Placebo Groups in Studies 2, 3, and 4



14.3 Adjunctive Therapy in Patients with Primary Generalized Tonic-Clonic Seizures

14.3 Adjunctive Therapy in Patients with Primary Generalized Tonic-Clonic Seizures

The efficacy of lacosamide as adjunctive therapy in patients 4 years of age and older with idiopathic generalized epilepsy experiencing primary generalized tonic-clonic (PGTC) seizures was established in a 24-week double-blind, randomized, placebo-controlled, parallel-group, multi-center study (Study 5). The study consisted of a 12-week historical baseline period, a 4-week prospective baseline period, and a 24-week treatment period (which included a 6-week titration period and an 18-week maintenance period). Eligible patients on a stable dose of 1 to 3 antiepileptic drugs experiencing at least 3 documented PGTC seizures during the 16-week combined baseline period were randomized 1:1 to receive lacosamide (n=121) or placebo (n=121).

Patients were dosed on a fixed-dose regimen. Dosing was initiated at a dose of 2 mg/kg/day in patients weighing less than 50 kg or 100 mg/day in patients weighing 50 kg or more in 2 divided doses. During the titration period, lacosamide doses were adjusted in 2 mg/kg/day increments in patients weighing less than 50 kg or 100 mg/day in patients weighing 50 kg or more at weekly intervals to achieve the target maintenance period dose of 12 mg/kg/day in patients weighing less than 30 kg, 8 mg/kg/day in patients weighing from 30 to less than 50 kg, or 400 mg/day in patients weighing 50 kg or more.

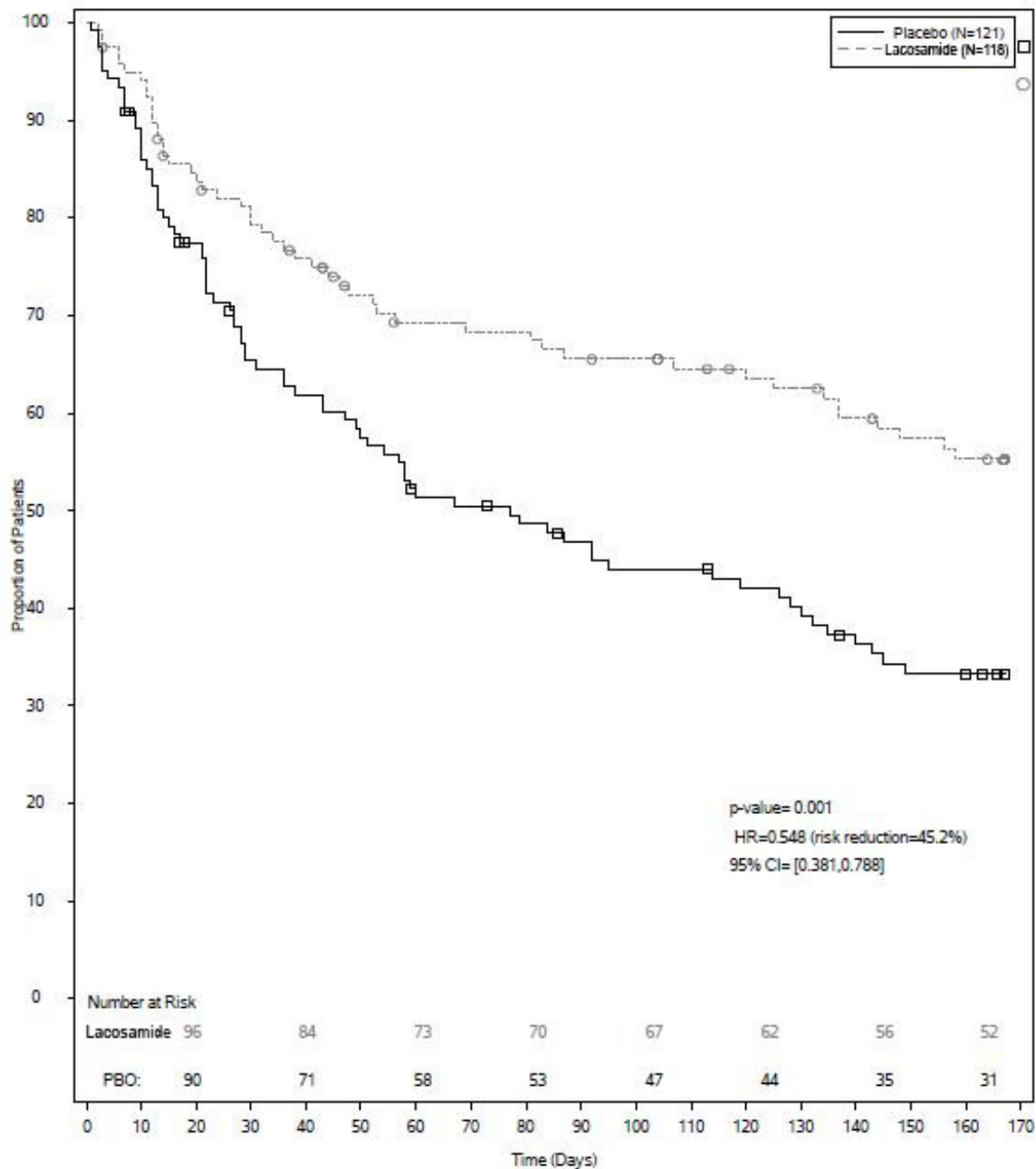
The primary efficacy endpoint (patients in the modified full analysis set: lacosamide n=118, placebo n=121) was the time to second PGTC seizure during the 24-week treatment period (Figure 3). The risk of developing a second PGTC seizure was statistically significantly lower in lacosamide group than in the placebo group during the

24-week treatment period (hazard ratio=0.548, 95% CI of hazard ratio: 0.381, 0.788, p-value = 0.001), with the corresponding risk reduction being 45.2%.

The key secondary efficacy endpoint was the percentage of patients not experiencing a PGTC seizure during the 24-week treatment period. The adjusted Kaplan-Meier estimates of 24-week freedom from PGTC seizures were 31.3% in lacosamide group and 17.2% in placebo group. The adjusted difference between treatment groups was 14.1% (95% CI: 3.2, 25.1, p-value=0.011).

Figure 3 - Kaplan-Meier Analysis of Time to 2nd PGTC Seizure (Study 5)

Analysis Set: Modified Full Analysis Set



The numbers at the bottom of the figure are for patients still at risk in the study at a given timepoint

(i.e., the continuing patients in the study without an event or censoring prior to the timepoint).

16 HOW SUPPLIED/STORAGE AND HANDLING

16.1 How Supplied

Lacosamide oral solution, USP **10 mg/mL** is a clear, colorless to yellow or yellow-brown, strawberry-flavored liquid. It is supplied as follows:

200 mL bottles	NDC 65162-912-52
5 mL unit dose cup	NDC 65162-912-43
10 unit dose cups in a tray	NDC 65162-912-48

16.2 Storage and Handling

Store at 20° to 25°C (68° to 77°F); excursions permitted between 15° to 30°C (59° to 86°F) [see USP Controlled Room Temperature].

Do not freeze lacosamide oral solution, USP. Discard any unused lacosamide oral solution, USP remaining after six (6) months of first opening the bottle.

17 PATIENT COUNSELING INFORMATION

Advise the patient or caregiver to read the FDA-approved patient labeling (Medication Guide). The Medication Guide accompanies the product and can also be accessed on www.amneal.com or by calling 1-877-835-5472.

Suicidal Thinking and Behavior

Patients, their caregivers, and families should be counseled that AEDs, including lacosamide, may increase the risk of suicidal thoughts and behavior and should be advised of the need to be alert for the emergence or worsening of symptoms of depression, any unusual changes in mood or behavior, or the emergence of suicidal thoughts, behavior, or thoughts about self-harm. Behaviors of concern should be reported immediately to healthcare providers [see *Warnings and Precautions (5.1)*].

Dizziness and Ataxia

Patients should be counseled that lacosamide use may cause dizziness, double vision, abnormal coordination and balance, and somnolence. Patients taking lacosamide should be advised not to drive, operate complex machinery, or engage in other hazardous activities until they have become accustomed to any such effects associated with lacosamide [see *Warnings and Precautions (5.2)*].

Cardiac Rhythm and Conduction Abnormalities

Patients should be counseled that lacosamide is associated with electrocardiographic changes that may predispose to irregular heart beat and syncope. Cardiac arrest has been reported. This risk is increased in patients with underlying cardiovascular disease, with heart conduction problems, or who are taking other medications that affect the heart. Patients should be made aware of and report cardiac signs or symptoms to their healthcare provider right away. Patients who develop syncope should lay down with

raised legs and contact their health care provider [see *Warnings and Precautions (5.3)*].

Drug Reaction with Eosinophilia and Systemic Symptoms (DRESS)/Multi-Organ Hypersensitivity

Patients should be aware that lacosamide may cause serious hypersensitivity reactions affecting multiple organs such as the liver and kidney. Lacosamide should be discontinued if a serious hypersensitivity reaction is suspected. Patients should also be instructed to report promptly to their physicians any symptoms of liver toxicity (e.g., fatigue, jaundice, dark urine) [see *Warnings and Precautions (5.6)*].

Pregnancy Registry

Advise patients to notify their healthcare provider if they become pregnant or intend to become pregnant during lacosamide therapy. Encourage patients to enroll in the North American Antiepileptic Drug (NAAED) pregnancy registry if they become pregnant. This registry is collecting information about the safety of AEDs during pregnancy [see *Use in Specific Populations (8.1)*].

Lactation

Advise breastfeeding women using lacosamide to monitor infants for excess sleepiness and to seek medical care if they notice this sign [see *Use in Specific Populations (8.2)*].

Manufactured by:

Amneal Pharmaceuticals LLC

Branchburg, NJ 08876

Distributed by:

Amneal Pharmaceuticals LLC

Glasgow, KY 42141

Rev. 03-2024-11

MEDICATION GUIDE

Lacosamide (la koe' sa mide) Oral Solution, USP, CV

Read this Medication Guide before you start taking lacosamide oral solution and each time you get a refill. There may be new information.

This Medication Guide describes important safety information about lacosamide oral solution. This information does not take the place of talking to your healthcare provider about your medical condition or treatment.

What is the most important information I should know about lacosamide oral solution?

Do not stop taking lacosamide oral solution without first talking to your healthcare provider. Stopping lacosamide oral solution suddenly can cause serious problems. Stopping seizure medicine suddenly in a patient who has epilepsy can cause seizures that will not stop (status epilepticus).

Lacosamide oral solution can cause serious side effects, including:

1. Like other antiepileptic drugs, lacosamide oral solution may cause suicidal thoughts or actions in a very small number of people, about 1 in 500.

Call a healthcare provider right away if you have any of these symptoms, especially if they are new, worse, or worry you:

- thoughts about suicide or dying
- attempt to commit suicide
- new or worse depression
- new or worse anxiety
- feeling agitated or restless
- panic attacks
- trouble sleeping (insomnia)
- new or worse irritability
- acting aggressive, being angry, or violent
- acting on dangerous impulses
- an extreme increase in activity and talking (mania)
- other unusual changes in behavior or mood

How can I watch for early symptoms of suicidal thoughts and actions?

- Pay attention to any changes, especially sudden changes, in mood, behaviors, thoughts, or feelings.
 - Keep all follow-up visits with your healthcare provider as scheduled.
 - Call your healthcare provider between visits as needed, especially if you are worried about symptoms.
 - Suicidal thoughts or actions can be caused by things other than medicines. If you have suicidal thoughts or actions, your healthcare provider may check for other causes.
2. Lacosamide oral solution may cause you to feel dizzy, have double vision, feel sleepy, or have problems with coordination and walking. Do not drive, operate heavy machinery, or do other dangerous activities until you know how lacosamide oral solution affects you.
3. Lacosamide oral solution may cause you to have an irregular heartbeat or may cause you to faint. In rare cases, cardiac arrest has been reported. Call your healthcare provider right away if you:
- have a fast, slow, or pounding heartbeat or feel your heart skip a beat
 - feel lightheaded

- have shortness of breath
- fainted or if you feel like you are going to faint
- have chest pain

If you have fainted or feel like you are going to faint you should lay down with your legs raised.

4. Lacosamide oral solution is a federally controlled substance (CV) because it can be abused or lead to drug dependence. Keep your lacosamide oral solution in a safe place, to protect it from theft. Never give your lacosamide oral solution to anyone else, because it may harm them. Selling or giving away this medicine is against the law.

What is lacosamide oral solution?

Lacosamide oral solution is a prescription medicine used:

- to treat partial-onset seizures in people 4 years of age and older.
- with other medicines to treat primary generalized tonic-clonic seizures in people 4 years of age and older.

It is not known if lacosamide oral solution is safe and effective for partial-onset seizures in children under 1 month of age or for primary generalized tonic-clonic seizures in children under 4 years of age.

What should I tell my healthcare provider before taking lacosamide oral solution?

Before you take lacosamide oral solution, tell your healthcare provider about all of your medical conditions, including if you:

- have or have had depression, mood problems or suicidal thoughts or behavior.
- have heart problems.
- have kidney problems.
- have liver problems.
- have abused prescription medicines, street drugs or alcohol in the past.
- are pregnant or plan to become pregnant. It is not known if lacosamide can harm your unborn baby. Tell your healthcare provider right away if you become pregnant while taking lacosamide oral solution. You and your healthcare provider will decide if you should take lacosamide oral solution while you are pregnant.
- If you become pregnant while taking lacosamide oral solution, talk to your healthcare provider about registering with the North American Antiepileptic Drug Pregnancy Registry. You can enroll in this registry by calling 1-888-233-2334. The purpose of this registry is to collect information about the safety of antiepileptic medicine during pregnancy.
- are breastfeeding or plan to breastfeed. Lacosamide passes into breast milk.
 - Breastfeeding during treatment with lacosamide oral solution may cause your baby to have more sleepiness than normal. If this happens, contact your baby's healthcare provider.
 - Talk to your healthcare provider about the best way to feed your baby if you take lacosamide oral solution.

Tell your healthcare provider about all the medicines you take, including

prescription and over-the-counter medicines, vitamins, and herbal supplements. Taking lacosamide oral solution with certain other medicines may cause side effects or affect how well they work. Do not start or stop other medicines without talking to your healthcare provider. Know the medicines you take. Keep a list of them and show it to your healthcare provider and pharmacist each time you get a new medicine.

How should I take lacosamide oral solution?

- Take lacosamide oral solution exactly as your healthcare provider tells you.
- Your healthcare provider will tell you how much lacosamide oral solution to take and when to take it.
- Your healthcare provider may change your dose if needed.
- Do not stop lacosamide oral solution without first talking to a healthcare provider. Stopping lacosamide oral solution suddenly in a patient who has epilepsy can cause seizures that will not stop (status epilepticus).
- Lacosamide oral solution may be taken with or without food.
- If your healthcare provider has prescribed lacosamide oral solution, be sure to ask your pharmacist for a medicine dropper or medicine cup to help you measure the correct amount of lacosamide oral solution. Do not use a household teaspoon. Ask your pharmacist for instructions on how to use the measuring device the right way.
- If you take too much lacosamide oral solution, call your healthcare provider or local Poison Control Center right away.

What should I avoid while taking lacosamide oral solution?

Do not drive, operate heavy machinery, or do other dangerous activities until you know how lacosamide oral solution affects you. Lacosamide oral solution may cause you to feel dizzy, have double vision, feel sleepy, or have problems with coordination and walking.

What are the possible side effects of lacosamide oral solution?

- See “**What is the most important information I should know about lacosamide oral solution?**”

Lacosamide oral solution may cause other serious side effects including:

- **A serious allergic reaction that may affect your skin or other parts of your body such as your liver or blood cells.** Call your healthcare provider right away if you have:
 - a skin rash, hives
 - swelling of the legs
 - fever or swollen glands that do not go away
 - yellowing of the skin or whites of the eyes
 - shortness of breath
 - dark urine

- tiredness (fatigue)

The most common side effects of lacosamide oral solution include:

- double vision
- nausea
- headache
- sleepiness
- dizziness

These are not all of the possible side effects of lacosamide oral solution. For more information ask your healthcare provider or pharmacist. Tell your healthcare provider about any side effect that bothers you or that does not go away. Call your doctor for medical advice about side effects. You may report side effects to FDA at 1-800-FDA-1088.

How should I store lacosamide oral solution?

- Store lacosamide oral solution at room temperature between 68°F to 77°F (20°C to 25°C).
- Do not freeze lacosamide oral solution.
- Throw away any unused lacosamide oral solution 6 months after you first open the bottle.

Keep lacosamide oral solution and all medicines out of the reach of children.

General Information about the safe and effective use of lacosamide oral solution.

Medicines are sometimes prescribed for purposes other than those listed in a Medication Guide. Do not use lacosamide oral solution for a condition for which it was not prescribed. Do not give lacosamide oral solution to other people, even if they have the same symptoms that you have. It may harm them.

This Medication Guide summarizes the most important information about lacosamide oral solution. If you would like more information, talk with your healthcare provider. You can ask your pharmacist or healthcare provider for information about lacosamide oral solution that is written for health professionals.

What are the ingredients in lacosamide oral solution?

Active ingredient: lacosamide, USP

Oral solution inactive ingredients: acesulfame potassium, anhydrous citric acid, flavor, glycerin, methylparaben, polyethylene glycol, purified water, sodium carboxymethylcellulose, sodium chloride and sorbitol solution.

Sodium hydroxide or hydrochloric acid may be added for adjustment of pH.

Additional pediatric use information is approved for UCB, Inc.'s VIMPAT® (lacosamide) oral solution. However, due to UCB, Inc.'s marketing exclusivity rights, this drug product is not labeled with that information.

Trademarks are the property of their respective owners.

Manufactured by:

Amneal Pharmaceuticals LLC

Branchburg, NJ 08876

Distributed by:

Amneal Pharmaceuticals LLC

Glasgow, KY 42141

Rev. 03-2024-11

For more information, go to www.amneal.com or call 1-877-835-5472.

This Medication Guide has been approved by the U.S. Food and Drug Administration.

PRINCIPAL DISPLAY PANEL

Each mL contains 10 mg of lacosamide, USP
USUAL DOSAGE: See package insert for dosage information.
Store at 20° to 25°C (68° to 77°F); excursions permitted between 15° to 30°C (59° to 86°F) [see USP Controlled Room Temperature].
Do not freeze.
KEEP OUT OF REACH OF CHILDREN.
Dispense in the original container, or as described in USP/NF.
Discard any unused product remaining after six (6) months of first opening the bottle.

Date Bottle Opened:
Non-Varnish Area

Rev. 02-2023-02

Manufactured by: **Amneal Pharmaceuticals LLC**
Branchburg, NJ 08876
Distributed by: **Amneal Pharmaceuticals LLC**
Glasgow, KY 42141

NDC 65162-912-52


Lacosamide
Oral Solution, USP

10 mg/mL

ATTENTION PHARMACIST: Each patient is required to receive the accompanying Medication Guide.

Rx only

Net Contents:
200 mL



0.75" x 2.625"
Non-Varnish Area for
Lot No. and Exp. Date

LACOSAMIDE

lacosamide solution

Product Information

Product Type	HUMAN PRESCRIPTION DRUG	Item Code (Source)	NDC:65162-912
Route of Administration	ORAL	DEA Schedule	CV

Active Ingredient/Active Moiety

Ingredient Name	Basis of Strength	Strength
LACOSAMIDE (UNII: 563KS2PQY5) (LACOSAMIDE - UNII:563KS2PQY5)	LACOSAMIDE	10 mg in 1 mL

Inactive Ingredients

Ingredient Name	Strength
ACESULFAME POTASSIUM (UNII: 23OV73Q5G9)	
ANHYDROUS CITRIC ACID (UNII: XF417D3PSL)	
GLYCERIN (UNII: PDC6A3C0OX)	
METHYLPARABEN (UNII: A2I8C7HI9T)	
POLYETHYLENE GLYCOL, UNSPECIFIED (UNII: 3WJQ0SDW1A)	
WATER (UNII: 059QF0KO0R)	
CARBOXYMETHYLCELLULOSE SODIUM (UNII: K679OBS311)	
SODIUM CHLORIDE (UNII: 451W47IQ8X)	
SORBITOL (UNII: 506T60A25R)	

Product Characteristics

Color	yellow (to yellow brown)	Score	
Shape		Size	
Flavor	STRAWBERRY	Imprint Code	
Contains			

Packaging

#	Item Code	Package Description	Marketing Start Date	Marketing End Date
1	NDC:65162-912-52	200 mL in 1 BOTTLE; Type 0: Not a Combination Product	03/29/2024	
2	NDC:65162-912-48	10 in 1 TRAY	03/29/2024	
2	NDC:65162-912-43	5 mL in 1 CUP, UNIT-DOSE; Type 0: Not a Combination Product		

Marketing Information

Marketing Category	Application Number or Monograph Citation	Marketing Start Date	Marketing End Date
ANDA	ANDA204839	03/29/2024	

Labeler - Amneal Pharmaceuticals LLC (123797875)

Establishment

Name	Address	ID/FEI	Business Operations
Amneal Pharmaceuticals, LLC		963900878	analysis(65162-912) , label(65162-912) , manufacture(65162-912) , pack(65162-912)