

# TOPOTECAN HYDROCHLORIDE - topotecan hydrochloride injection, powder, lyophilized, for solution

Bedford Laboratories

-----

## HIGHLIGHTS OF PRESCRIBING INFORMATION

These highlights do not include all the information needed to use (Topotecan Hydrochloride For Injection) safely and effectively.

See full prescribing information for (topotecan hydrochloride for injection).

Topotecan Hydrochloride For Injection

Initial U.S. Approval: 1996

### WARNING: BONE MARROW SUPPRESSION

*See full prescribing information for complete boxed warning.*

**Do not give topotecan hydrochloride for injection to patients with baseline neutrophil counts less than 1,500 cells/mm<sup>3</sup>. In order to monitor the occurrence of bone marrow suppression, primarily neutropenia, which may be severe and result in infection and death, monitor peripheral blood cell counts frequently on all patients receiving topotecan hydrochloride for injection. (5.1)**

### RECENT MAJOR CHANGES

Dosage and Administration (2) 02/2014

### INDICATIONS AND USAGE

Topotecan hydrochloride for injection is a topoisomerase inhibitor indicated for:

- Small cell lung cancer sensitive disease after failure of first-line chemotherapy. (1)
- Combination therapy with cisplatin for stage IV-B, recurrent, or persistent carcinoma of the cervix which is not amenable to curative treatment with surgery and/or radiation therapy. (1)

### DOSAGE AND ADMINISTRATION

- Small cell lung cancer: 1.5mg/m<sup>2</sup> by intravenous infusion over 30 minutes daily for 5 consecutive days, starting on day one of a 21-day course. (2.1)
- Cervical cancer: 0.75mg/m<sup>2</sup> by intravenous infusion over 30 minutes on days 1, 2, and 3 followed by cisplatin 50mg/m<sup>2</sup> by intravenous infusion on day 1 repeated every 21 days. (2.2)<sup>1</sup>  
See Dosage Modification Guidelines for patients with neutropenia or reduced platelets. (2.1, 2.2) See Dosage Adjustment in Renal Impairment. (2.3)

### DOSAGE FORMS AND STRENGTHS

4 mg (free base) single-dose vial. (3)

### CONTRAINDICATIONS

- History of severe hypersensitivity reactions (e.g., anaphylactoid reactions) to topotecan or any of its ingredients (4)
- Severe bone marrow depression (4)

### WARNINGS AND PRECAUTIONS

- Bone marrow suppression: Administer topotecan hydrochloride for injection only to patients with adequate bone marrow reserves. Monitor peripheral blood counts and adjust the dose if needed. (5.1)
- Topotecan-induced neutropenia can lead to neutropenic colitis. (5.2)
- Interstitial lung disease: Topotecan hydrochloride for injection has been associated with reports of interstitial lung disease. Monitor patients for symptoms and discontinue topotecan hydrochloride for injection if the diagnosis is confirmed. (5.3)
- Pregnancy: Can cause fetal harm. Advise women of potential risk to the fetus. (5.4, 8.1)

### ADVERSE REACTIONS

Small cell lung cancer:

- The most common hematologic adverse reactions were: neutropenia (97%), leukopenia (97%), anemia (89%), and thrombocytopenia (69%). (6.1)
- The most common (>25%) non-hematologic adverse reactions (all grades) were: nausea, alopecia, vomiting, sepsis or pyrexia/infection with neutropenia, diarrhea, constipation, fatigue, and pyrexia. (6.1)

Cervical cancer (topotecan hydrochloride for injection plus cisplatin):

- The most common hematologic adverse reactions (all grades) were: anemia (94%), leukopenia (91%), neutropenia (89%), and thrombocytopenia (74%). (6.1)
- The most common (>25%) non-hematologic adverse reactions (all grades) were: pain, nausea, vomiting, and infection/febrile neutropenia. (6.1)

**To report SUSPECTED ADVERSE REACTIONS, contact Dr. Reddy's Laboratories Limited Inc., at 1-888-375-3784 or FDA at 1-800-FDA-1088 or [www.fda.gov/medwatch](http://www.fda.gov/medwatch)**

----- **DRUG INTERACTIONS** -----

- Do not initiate G-CSF until 24 hours after completion of treatment with topotecan hydrochloride for injection. Concomitant administration can prolong duration of neutropenia. (7)
- Greater myelosuppression is likely to be seen when used in combination with other cytotoxic agents. (7)

----- **USE IN SPECIFIC POPULATIONS** -----

- Nursing Mothers: Discontinue nursing when receiving topotecan hydrochloride for injection. (8.3)

See 17 for PATIENT COUNSELING INFORMATION.

Revised: 4/2016

---

**FULL PRESCRIBING INFORMATION: CONTENTS\***

**WARNING: BONE MARROW SUPPRESSION**

**1 INDICATIONS AND USAGE**

**2 DOSAGE AND ADMINISTRATION**

**2.1 Small Cell Lung Cancer**

**2.2 Cervical Cancer**

**2.3 Dosage Adjustment in Specific Populations**

**2.4 Instructions for Handling, Preparation and Intravenous Administration**

**3 DOSAGE FORMS AND STRENGTHS**

**4 CONTRAINDICATIONS**

**5 WARNINGS AND PRECAUTIONS**

**5.1 Bone Marrow Suppression**

**5.2 Neutropenic Colitis**

**5.3 Interstitial Lung Disease**

**5.4 Pregnancy**

**Pregnancy Category D**

**5.5 Inadvertent Extravasation**

**6 ADVERSE REACTIONS**

**6.1 Clinical Trials Experience**

**6.2 Postmarketing Experience**

**7 DRUG INTERACTIONS**

**8 USE IN SPECIFIC POPULATIONS**

**8.1 Pregnancy**

**8.3 Nursing Mothers**

**8.4 Pediatric Use**

**8.5 Geriatric Use**

**8.6 Renal Impairment**

**10 OVERDOSAGE**

**11 DESCRIPTION**

**12 CLINICAL PHARMACOLOGY**

**12.1 Mechanism of Action**

**12.2 Pharmacodynamics**

**12.3 Pharmacokinetics**

## 13 NONCLINICAL TOXICOLOGY

13.1 Carcinogenesis, Mutagenesis, Impairment Of Fertility

## 14 CLINICAL STUDIES

14.2 Small Cell Lung Cancer

14.3 Cervical Cancer

## 15 REFERENCES

## 16 HOW SUPPLIED/STORAGE AND HANDLING

## 17 PATIENT COUNSELING INFORMATION

17.1 Bone Marrow Suppression

17.2 Pregnancy and Breastfeeding

17.3 Asthenia and Fatigue

\* Sections or subsections omitted from the full prescribing information are not listed.

---

## FULL PRESCRIBING INFORMATION

### WARNING: BONE MARROW SUPPRESSION

Do not give topotecan hydrochloride for injection to patients with baseline neutrophil counts less than 1,500 cells/mm<sup>3</sup>. In order to monitor the occurrence of bone marrow suppression, primarily neutropenia, which may be severe and result in infection and death, monitor peripheral blood counts frequently on all patients receiving topotecan hydrochloride for injection [see Warnings and Precautions (5.1)].

## 1 INDICATIONS AND USAGE

Topotecan hydrochloride for injection is indicated for the treatment of:

- Small cell lung cancer sensitive disease after failure of first-line chemotherapy. In clinical studies submitted to support approval, sensitive disease was defined as disease responding to chemotherapy but subsequently progressing at least 60 days (in the Phase 3 study) or at least 90 days (in the Phase 2 studies) after chemotherapy [see **Clinical Studies (14)**].
- Topotecan hydrochloride for injection in combination with cisplatin is indicated for the treatment of: stage IV-B, recurrent, or persistent carcinoma of the cervix which is not amenable to curative treatment with surgery and/or radiation therapy.

## 2 DOSAGE AND ADMINISTRATION

Verify dose using body surface area prior to dispensing. Recommended dosage should generally not exceed 4 mg intravenously [see **Overdosage (10)**].

Prior to administration of the first course of topotecan hydrochloride for injection, patients must have a baseline neutrophil count of >1,500 cells/mm

<sup>3</sup> and a platelet count of >100,000 cells/mm<sup>3</sup>.

### 2.1 Small Cell Lung Cancer

Recommended Dosage:

- The recommended dose of topotecan hydrochloride for injection is 1.5 mg/m<sup>2</sup> by intravenous infusion over 30 minutes daily for 5 consecutive days, starting on day 1 of a 21-day course.
- In the absence of tumor progression, a minimum of 4 courses is recommended because tumor response may be delayed and median time to response in 4 small cell lung cancer trials was 5 to 7

weeks.

#### Dosage Modification Guidelines:

- In the event of severe neutropenia (defined as  $<500$  cells/mm<sup>3</sup>) during any course, reduce the dose by 0.25 mg/m<sup>2</sup> (to 1.25 mg/m<sup>2</sup>) for subsequent courses.
- Alternatively, in the event of severe neutropenia, administer G-CSF (granulocyte-colony stimulating factor) following the subsequent course (before resorting to dose reduction) starting from day 6 of the course (24 hours after completion of topotecan administration). In the event the platelet count falls below 25,000 cells/mm<sup>3</sup>, reduce doses by 0.25 mg/m<sup>2</sup> (to 1.25 mg/m<sup>2</sup>) for subsequent courses.

## 2.2 Cervical Cancer

**Recommended Dosage:** The recommended dose of topotecan hydrochloride for injection is 0.75 mg/m<sup>2</sup> by intravenous infusion over 30 minutes daily on days 1, 2, and 3; followed by cisplatin 50 mg/m<sup>2</sup> by intravenous infusion on day 1 repeated every 21 days (a 21-day course).

**Dosage Modification Guidelines:** Dosage adjustments for subsequent courses of topotecan hydrochloride for injection in combination with cisplatin are specific for each drug. See manufacturer's prescribing information for cisplatin administration and hydration guidelines and for cisplatin dosage adjustment in the event of hematologic toxicity.

- In the event of severe febrile neutropenia (defined as  $<1000$  cells/mm<sup>3</sup> with temperature of 38.0°C or 100.4°F), reduce the dose of topotecan hydrochloride for injection to 0.60 mg/m<sup>2</sup> for subsequent courses.
- Alternatively, in the event of severe febrile neutropenia, administer G-CSF following the subsequent course (before resorting to dose reduction) starting from day 4 of the course (24 hours after completion of administration of topotecan hydrochloride for injection).
- If febrile neutropenia occurs despite the use of G-CSF, reduce the dose of topotecan hydrochloride for injection to 0.45 mg/m<sup>2</sup> for subsequent courses.
- In the event the platelet count falls below 25,000 cells/mm<sup>3</sup>, reduce doses to 0.60 mg/m<sup>2</sup> for subsequent courses.

## 2.3 Dosage Adjustment in Specific Populations

**Renal Impairment:** No dosage adjustment of topotecan hydrochloride for injection appears to be required for patients with mild renal impairment (Cl<sub>cr</sub> 40 to 60 mL/min.). Dosage adjustment of topotecan hydrochloride for injection to 0.75 mg/m<sup>2</sup> is recommended for patients with moderate renal impairment (20 to 39 mL/min.). Insufficient data are available in patients with severe renal impairment to provide a dosage recommendation for topotecan hydrochloride for injection [see **Use in Specific Populations (8.6) and Clinical Pharmacology (12.3)**].

Topotecan hydrochloride for injection in combination with cisplatin for the treatment of cervical cancer should only be initiated in patients with serum creatinine  $\leq 1.5$  mg/dL. In the clinical trial, cisplatin was discontinued for a serum creatinine  $>1.5$  mg/dL. Insufficient data are available regarding continuing monotherapy with topotecan hydrochloride for injection after cisplatin discontinuation in patients with cervical cancer.

## 2.4 Instructions for Handling, Preparation and Intravenous Administration

**Handling:** Topotecan hydrochloride for injection is a cytotoxic anticancer drug. Prepare topotecan hydrochloride for injection under a vertical laminar flow hood while wearing gloves and protective clothing. If topotecan hydrochloride for injection solution contacts the skin, wash the skin immediately and thoroughly with soap and water. If topotecan hydrochloride for injection contacts mucous membranes, flush thoroughly with water.

Use procedures for proper handling and disposal of anticancer drugs. Several guidelines on this subject have been published.<sup>1-4</sup>

**Preparation and Administration:** Each 4 mg vial of topotecan hydrochloride for injection is reconstituted

with 4 mL Sterile Water for Injection. Then the appropriate volume of the reconstituted solution is diluted in either 0.9% Sodium Chloride Intravenous Infusion or 5% Dextrose Intravenous Infusion prior to administration.

Stability: Unopened vials of topotecan hydrochloride for injection are stable until the date indicated on the package when stored at 20°-25°C (68°-77°F); [See USP Controlled Room Temperature] and protected from light in the original package. Because the vials contain no preservative, contents should be used immediately after reconstitution.

Reconstituted vials of topotecan hydrochloride for injection diluted for infusion are stable at approximately 20° to 25°C (68° to 77°F) and ambient lighting conditions for 24 hours.

### 3 DOSAGE FORMS AND STRENGTHS

4 mg (free base) single-dose vial, light yellow to greenish powder

### 4 CONTRAINDICATIONS

Topotecan hydrochloride for injection is contraindicated in patients who have a history of severe hypersensitivity reactions (e.g., anaphylactoid reactions) to topotecan or to any of its ingredients. Topotecan hydrochloride for injection should not be used in patients with severe bone marrow depression.

### 5 WARNINGS AND PRECAUTIONS

#### 5.1 Bone Marrow Suppression

Bone marrow suppression (primarily neutropenia) is the dose-limiting toxicity of topotecan hydrochloride for injection. Neutropenia is not cumulative over time. In the comparative trial in small cell lung cancer, however, the treatment-related death rates were 5% for topotecan hydrochloride for injection and 4% for CAV (cyclophosphamide-doxorubicin-vincristine).

**Neutropenia:** Small cell lung cancer experience: Grade 4 neutropenia (<500 cells/mm<sup>3</sup>) was most common during course 1 of treatment (60% of patients) and occurred in 39% of all courses, with a median duration of 7 days. The nadir neutrophil count occurred at a median of 12 days. Therapy-related sepsis or febrile neutropenia occurred in 23% of patients, and sepsis was fatal in 1%. Pancytopenia has been reported.

Cervical cancer experience: Grade 3 and Grade 4 neutropenia affected 26% and 48% of patients, respectively.

**Thrombocytopenia:** Small cell lung cancer experience: Grade 4 thrombocytopenia (<25,000/mm<sup>3</sup>) occurred in 27% of patients and in 9% of courses, with a median duration of 5 days and platelet nadir at a median of 15 days. Platelet transfusions were given to 15% of patients in 4% of courses.

Cervical cancer experience: Grade 3 and Grade 4 thrombocytopenia affected 26% and 7% of patients, respectively.

#### **Anemia:**

- Small cell lung cancer experience: Grade 3/4 anemia (<8 g/dL) occurred in 37% of patients and in 14% of courses. Median nadir was at day 15. Transfusions were needed in 52% of patients in 22% of courses.
- Cervical cancer experience: Grade 3 and Grade 4 anemia affected 34% and 6% of patients, respectively.

**Monitoring of Bone Marrow Function:** Administer topotecan hydrochloride for injection only in patients with adequate bone marrow reserves, including baseline neutrophil count of at least 1,500

cells/mm<sup>3</sup> and platelet count at least 100,000/mm<sup>3</sup>. Monitor peripheral blood counts frequently during treatment with topotecan hydrochloride for injection. Do not treat patients with subsequent courses of topotecan hydrochloride for injection until neutrophils recover to >1,000 cells/mm<sup>3</sup>, platelets recover to >100,000 cells/mm<sup>3</sup>, and hemoglobin levels recover to 9.0 g/dL (with transfusion if necessary). Severe myelotoxicity has been reported when topotecan hydrochloride for injection is used in combination with cisplatin [see **Drug Interactions**(7)].

## 5.2 Neutropenic Colitis

Topotecan-induced neutropenia can lead to neutropenic colitis. Fatalities due to neutropenic colitis have been reported in clinical trials with topotecan hydrochloride for injection. In patients presenting with fever, neutropenia, and a compatible pattern of abdominal pain, consider the possibility of neutropenic colitis.

## 5.3 Interstitial Lung Disease

Topotecan hydrochloride for injection has been associated with reports of interstitial lung disease (ILD), some of which have been fatal [see **Adverse Reactions (6.2)**]. Underlying risk factors include history of ILD, pulmonary fibrosis, lung cancer, thoracic exposure to radiation, and use of pneumotoxic drugs and/or colony stimulating factors. Monitor patients for pulmonary symptoms indicative of interstitial lung disease (e.g., cough, fever, dyspnea, and/or hypoxia), and discontinue topotecan hydrochloride for injection if a new diagnosis of ILD is confirmed.

## 5.4 Pregnancy

### Pregnancy Category D

Topotecan hydrochloride for injection can cause fetal harm when administered to a pregnant woman. Topotecan caused embryoletality, fetotoxicity, and teratogenicity in rats and rabbits when administered during organogenesis. There are no adequate and well-controlled studies of topotecan hydrochloride for injection in pregnant women. If this drug is used during pregnancy, or if a patient becomes pregnant while receiving topotecan hydrochloride for injection, the patient should be apprised of the potential hazard to the fetus. [see **Use in Specific Populations (8.1)**].

## 5.5 Inadvertent Extravasation

Inadvertent extravasation with topotecan hydrochloride for injection has been observed, most reactions have been mild, but severe cases have been reported.

# 6 ADVERSE REACTIONS

## 6.1 Clinical Trials Experience

Because clinical trials are conducted under widely varying conditions, adverse reaction rates observed in the clinical trials of a drug cannot be directly compared with rates in the clinical trials of another drug and may not reflect the rates observed in practice.

Small Cell Lung Cancer: Data in the following section are based on the 426 patients with small cell lung cancer treated with topotecan hydrochloride for injection. Table 1 lists the principal hematologic adverse reactions and Table 2 lists non-hematologic adverse reactions occurring in at least 15% of patients.

**Table 1. Hematologic Adverse Reactions Experienced in ≥15% Small Cell Lung Cancer Patients Receiving Topotecan Hydrochloride For Injection**

Hematologic Adverse Reaction	Patients (n = 879) %
------------------------------	----------------------------

	<b>Incidence</b>
Neutropenia	97
<1,500 cells/mm <sup>3</sup>	78
<500 cells/mm <sup>3</sup>	
Leukopenia	97
<3,000 cells/mm <sup>3</sup>	32
<1,000 cells/mm <sup>3</sup>	
Thrombocytopenia	69
<75,000/mm <sup>3</sup>	27
<25,000/mm <sup>3</sup>	
Anemia	89
<10 g/dL	37
<8 g/dL	

**Table 2. Non-hematologic Adverse Reactions Experienced by ≥15% of Small Cell Lung Cancer Patients Receiving Topotecan Hydrochloride For Injection**

<b>Non-hematologic Adverse Reaction</b>	<b>Percentage of Patients with Adverse Reaction (879 Patients)</b>		
	<b>All Grades</b>	<b>Grade 3</b>	<b>Grade 4</b>
<b>Infections and infestations</b>	43	NR	23
Sepsis or pyrexia/infection with neutropenia <sup>a</sup>			
<b>Metabolism and nutrition disorders</b>			
Anorexia	19	2	<1
<b>Nervous system disorders</b>	18	1	<1
Headache			
<b>Respiratory, thoracic, and mediastinal disorders</b>	22	5	3
Dyspnea	15	1	0
Coughing			
<b>Gas trointes tinal disorders</b>	64	7	1
Nausea	45	4	1
Vomiting	32	3	1
Diarrhea	29	2	1
Constipation	22	2	2
Abdominal pain	18	1	<1
Stomatitis			
<b>Skin and subcutaneous tissue disorders</b>	49	NA	NA
Alopecia	16	1	0
Rash <sup>b</sup>			
<b>General disorders and administrative site conditions</b>	29	5	0
Fatigue	28	1	<1
Pyrexia	23	2	1
Pain <sup>c</sup>	25	4	2
Asthenia			

NA = Not applicable

NR = Not reported separately

<sup>a</sup> Does not include Grade 1 sepsis or pyrexia.

b Rash also includes pruritus, rash erythematous, urticaria, dermatitis, bullous eruption, and maculopapular rash.

c Pain includes body pain, back pain, and skeletal pain.

Nervous System Disorders: Paresthesia occurred in 7% of patients but was generally Grade 1.

Hepatobiliary Disorders: Grade 1 transient elevations in hepatic enzymes occurred in 8% of patients. Greater elevations, Grade 3/4, occurred in 4%. Grade 3/4 elevated bilirubin occurred in <2% of patients.

Table 3 shows the Grade 3/4 hematologic and major non-hematologic adverse reactions in the topotecan/CAV (cyclophosphamide-doxorubicin-vincristine) comparator trial in small cell lung cancer.

**Table 3. Adverse Reactions Experienced by ≥5% of Small Cell Lung Cancer Patients Randomized to Receive Topotecan Hydrochloride For Injection or CAV**

Adverse Reaction	Topotecan Hydrochloride For Injection (n = 107)	CAV (n = 104)
Hematologic Grade 3/4	%	%
Grade 4 neutropenia (<500 cells/mm <sup>3</sup> )	70	72
Grade 3/4 anemia (Hgb <8 g/dL)	42	20
Grade 4 thrombocytopenia (<25,000 plts/mm <sup>3</sup> )	29	5
Pyrexia/Grade 4 neutropenia	28	26
Non-hematologic Grade 3/4	%	%
Infections and infestations Documented sepsis <sup>a</sup>	5	5
Respiratory, thoracic, and mediastinal disorders		
Dyspnea	9	14
Pneumonia	8	6
Gastrointestinal disorders		
Abdominal pain	6	4
Nausea	8	6
General disorders and administrative site conditions	6	10
Fatigue	9	7
Asthenia	5	7
Pain <sup>b</sup>		

a Death related to sepsis occurred in 3% of patients receiving topotecan hydrochloride for injection, and 1% of patients receiving CAV.

b Pain includes body pain, skeletal pain, and back pain.

Cervical Cancer: In the comparative trial with topotecan hydrochloride for injection plus cisplatin versus cisplatin in patients with cervical cancer, the most common dose-limiting adverse reaction was myelosuppression. Table 4 shows the hematologic adverse reactions and Table 5 shows the non-hematologic adverse reactions in patients with cervical cancer.

**Table 4. Hematologic Adverse Reactions in Patients with Cervical Cancer Treated with Topotecan Hydrochloride For Injection Plus Cisplatin or Cisplatin Monotherapy<sup>a</sup>**

Hematologic Adverse Reaction	Topotecan Hydrochloride For Injection Plus Cisplatin (n = 140)	Cisplatin (n = 144)
Anemia		



All Grades (Hgb <12 g/dL)	131 (94%)	130 (90%)
Grade 3 (Hgb <8-6.5 g/dL)	47 (34%)	28 (19%)
Grade 4 (Hgb <6.5 g/dL)	9 (6%)	5 (3%)
Leukopenia		
All Grades (<3,800 cells/mm <sup>3</sup> )	128 (91%)	43 (30%)
Grade 3 (<2,000-1,000 cells/mm <sup>3</sup> )	58 (41%)	1 (1%)
Grade 4 (<1,000 cells/mm <sup>3</sup> )	35 (25%)	0 (0%)
Neutropenia		
All Grades (<2,000 cells/mm <sup>3</sup> )	125 (89%)	28 (19%)
Grade 3 (<1,000-500 cells/mm <sup>3</sup> )	36 (26%)	1 (1%)
Grade 4 (<500 cells/mm <sup>3</sup> )	67 (48%)	1 (1%)
Thrombocytopenia		
All Grades (<130,000 cells/mm <sup>3</sup> )	104 (74%)	21 (15%)
Grade 3 (<50,000-10,000 cells/mm <sup>3</sup> )	36 (26%)	5 (3%)
Grade 4 (<10,000 cells/mm <sup>3</sup> )	10 (7%)	0 (0%)

a Includes patients who were eligible and treated.

**Table 5. Non-hematologic Adverse Reactions Experienced by ≥5% of Patients with Cervical Cancer Treated with Topotecan Hydrochloride For Injection Plus Cisplatin or Cisplatin Monotherapy<sup>a</sup>**

Adverse Reaction	Topotecan Hydrochloride For Injection Plus Cisplatin			Cisplatin		
	All Grades <sup>b</sup>	Grade 3	Grade 4	All Grades <sup>b</sup>	Grade 3	Grade 4
	(n = 140)			(n = 144)		
General disorders and administrative site conditions						
Constitutional <sup>c</sup>	96 (69%)	11 (8%)	0	89 (62%)	17 (12%)	0
Pain <sup>d</sup>	82 (59%)	28 (20%)	3 (2%)	72 (50%)	18 (13%)	5 (3%)

Gastrointestinal disorders						
Vomiting	56 (40%)	20 (14%)	2 (1%)	53 (37%)	13 (9%)	0
Nausea	77 (55%)	18 (13%)	2 (1%)	79 (55%)	13 (9%)	0
Stomatitis-pharyngitis	8 (6%)	1 (<1%)	0	0	0	0
Other	88 (63%)	16 (11%)	4 (3%)	80 (56%)	12 (8%)	3 (2%)
Dermatology	67 (48%)	1 (<1%)	0	29 (20%)	0	0
Metabolic-Laboratory	55 (39%)	13 (9%)	7 (5%)	44 (31%)	14 (10%)	1 (<1%)
Genitourinary	51 (36%)	9 (6%)	9 (6%)	49 (34%)	7 (5%)	7 (5%)
Nervous system disorders						
Neuropathy	4 (3%)	1 (<1%)	0	3 (2%)	1 (<1%)	0
Other	49 (35%)	3 (2%)	1 (<1%)	43 (30%)	7 (5%)	2 (1%)
Infection-febrile neutropenia	39 (28%)	21 (15%)	5 (4%)	26 (18%)	11 (8%)	0
Cardiovascular	35 (25%)	7 (5%)	6 (4%)	22 (15%)	8 (6%)	3 (2%)
Hepatic	34 (24%)	5 (4%)	2 (1%)	23 (16%)	2 (1%)	0
Pulmonary	24 (17%)	4 (3%)	0	23 (16%)	5 (3%)	3 (2%)
Vascular disorders						
Hemorrhage	21 (15%)	8 (6%)	1 (<1%)	20 (14%)	3 (2%)	1 (<1%)
Coagulation	8 (6%)	4 (3%)	3 (2%)	10 (7%)	7 (5%)	0
Musculoskeletal	19 (14%)	3 (2%)	0	7 (5%)	1 (<1%)	1 (<1%)
Allergy-Immunology	8 (6%)	2 (1%)	1 (<1%)	4 (3%)	0	1 (<1%)
Endocrine	8 (6%)	0	0	4 (3%)	2 (1%)	0
Sexual reproduction function	7 (5%)	0	0	10 (7%)	1 (<1%)	0
Ocular-visual	7 (5%)	0	0	7 (5%)	1 (<1%)	0

Data were collected using NCI Common Toxicity Criteria, v. 2.0.

<sup>a</sup> Includes patients who were eligible and treated.

<sup>b</sup> Grades 1 through 4 only. There were 3 patients who experienced Grade 5 deaths with investigator-designated attribution. One was a Grade 5 hemorrhage in which the drug-related thrombocytopenia aggravated the event. A second patient experienced bowel obstruction, cardiac arrest, pleural effusion and respiratory failure which were not treatment related but probably aggravated by treatment. A third patient experienced a pulmonary embolism and adult respiratory distress syndrome, the latter was indirectly treatment-related.

<sup>c</sup> Constitutional includes fatigue (lethargy, malaise, asthenia), fever (in the absence of neutropenia), rigors, chills, sweating, and weight gain or loss.

<sup>d</sup> Pain includes abdominal pain or cramping, arthralgia, bone pain, chest pain (non-cardiac and non-pleuritic), dysmenorrhea, dyspareunia, earache, headache, hepatic pain, myalgia, neuropathic pain, pain due to radiation, pelvic pain, pleuritic pain, rectal or perirectal pain, and tumor pain.

## 6.2 Postmarketing Experience

In addition to adverse reactions reported from clinical trials or listed in other sections of the prescribing information, the following reactions have been identified during postmarketing use of topotecan hydrochloride for injection. Because they are reported voluntarily from a population of unknown size, estimates of frequency cannot be made. These reactions have been chosen for inclusion due to a combination of their seriousness, frequency of reporting, or potential causal connection to topotecan hydrochloride for injection.

**Blood and Lymphatic System Disorders:** Severe bleeding (in association with thrombocytopenia) [see **Warnings and Precautions (5.1)**].

**Immune System Disorders:** Allergic manifestations; anaphylactoid reactions.

**Gastrointestinal Disorders:** Abdominal pain potentially associated with neutropenic colitis [see **Warnings and Precautions (5.2)**].

**Pulmonary Disorders:** Interstitial lung disease [see **Warnings and Precautions (5.3)**].

**Skin and Subcutaneous Tissue Disorders:** Angioedema, severe dermatitis, severe pruritus.

**General Disorders and Administration Site Conditions:** Inadvertent extravasation [see **Warnings and Precautions (5.5)**].

## 7 DRUG INTERACTIONS

**G-CSF:** Concomitant administration of G-CSF can prolong the duration of neutropenia, so if G-CSF is to be used, do not initiate it until day 6 of the course of therapy, 24 hours after completion of treatment with topotecan hydrochloride for injection.

**Platinum and Other Cytotoxic Agents:** Myelosuppression was more severe when topotecan hydrochloride for injection, at a dose of 1.25 mg/m<sup>2</sup>/day for 5 days, was given in combination with cisplatin at a dose of 50 mg/m<sup>2</sup> in Phase 1 trials. In one trial, 1 of 3 patients had severe neutropenia for 12 days and a second patient died with neutropenic sepsis.

Greater myelosuppression is also likely to be seen when topotecan hydrochloride for injection is used in combination with other cytotoxic agents, thereby necessitating a dose reduction. However, when combining topotecan hydrochloride for injection with platinum agents (e.g., cisplatin or carboplatin), a distinct sequence-dependent interaction on myelosuppression has been reported. Coadministration of a platinum agent on day 1 of dosing with topotecan hydrochloride for injection required lower doses of each agent compared to coadministration on day 5 of the dosing schedule for topotecan hydrochloride for injection.

For information on the pharmacokinetics, efficacy, safety, and dosing of topotecan hydrochloride for injection at a dose of 0.75 mg/m<sup>2</sup>/day on days 1, 2, and 3 in combination with cisplatin 50 mg/m<sup>2</sup> on day 1 for cervical cancer, see **Dosage and Administration (2), Adverse Reactions (6), Clinical**

## Pharmacology (12.3), and Clinical Studies (14).

### 8 USE IN SPECIFIC POPULATIONS

#### 8.1 Pregnancy

Pregnancy Category D [see **Warnings and Precautions (5.4)**].

Topotecan hydrochloride for injection can cause fetal harm when administered to a pregnant woman. In rabbits, a dose of 0.10 mg/kg/day (about equal to the clinical dose on a mg/m<sup>2</sup> basis) given on days 6 through 20 of gestation caused maternal toxicity, embryoletality, and reduced fetal body weight. In the rat, a dose of 0.23 mg/kg/day (about equal to the clinical dose on a mg/m<sup>2</sup> basis) given for 14 days before mating through gestation day 6 caused fetal resorption, microphthalmia, pre-implant loss, and mild maternal toxicity. A dose of 0.10 mg/kg/day (about half the clinical dose on a mg/m<sup>2</sup> basis) given to rats on days 6 through 17 of gestation caused an increase in post-implantation mortality. This dose also caused an increase in total fetal malformations. The most frequent malformations were of the eye (microphthalmia, anophthalmia, rosette formation of the retina, coloboma of the retina, ectopic orbit), brain (dilated lateral and third ventricles), skull, and vertebrae.

There are no adequate and well-controlled studies of topotecan hydrochloride for injection in pregnant women. If this drug is used during pregnancy, or if a patient becomes pregnant while receiving topotecan hydrochloride for injection, the patient should be apprised of the potential hazard to the fetus. [see **Warnings and Precautions (5.4)**].

#### 8.3 Nursing Mothers

Rats excrete high concentrations of topotecan into milk. Lactating female rats given 4.72 mg/m<sup>2</sup> IV (about twice the clinical dose on a mg/m<sup>2</sup> basis) excreted topotecan into milk at concentrations up to 48-fold higher than those in plasma. It is not known whether the drug is excreted in human milk. Because many drugs are excreted in human milk and because of the potential for serious adverse reactions in nursing infants from topotecan hydrochloride for injection, discontinue breastfeeding when women are receiving topotecan hydrochloride for injection.

#### 8.4 Pediatric Use

Safety and effectiveness in pediatric patients have not been established.

#### 8.5 Geriatric Use

Of the 879 patients with small cell lung cancer in clinical trials of topotecan hydrochloride for injection, 32% (n = 281) were 65 years of age and older, while 3.8% (n = 33) were 75 years of age and older. Of the 140 patients with stage IV-B, relapsed, or refractory cervical cancer in clinical studies of topotecan hydrochloride for injection who received topotecan hydrochloride for injection plus cisplatin in the randomized clinical trial, 6% (n = 9) were 65 years of age and older, while 3% (n = 4) were 75 years of age and older. No overall differences in effectiveness or safety were observed between these patients and younger adult patients, and other reported clinical experience has not identified differences in responses between the elderly and younger adult patients, but greater sensitivity of some older individuals cannot be ruled out.

There were no apparent differences in the pharmacokinetics of topotecan in elderly patients, once the age-related decrease in renal function was considered [see **Clinical Pharmacology (12.3)**].

This drug is known to be substantially excreted by the kidney, and the risk of toxic reactions to this drug may be greater in patients with impaired renal function. Because elderly patients are more likely to have decreased renal function, care should be taken in dose selection, and it may be useful to monitor renal function [see **Dosage and Administration (2.3)**].

#### 8.6 Renal Impairment

No dosage adjustment of topotecan hydrochloride for injection appears to be required for patients with mild renal impairment ( $Cl_{cr}$  40 to 60 mL/min.). Dosage reduction is recommended for patients with moderate renal impairment ( $Cl_{cr}$  20 to 39 mL/min.). Insufficient data are available in patients with severe renal impairment to provide a dosage recommendation for topotecan hydrochloride for injection. [See **Dosage and Administration (2.3)** and **Clinical Pharmacology (12.3)**].

## 10 OVERDOSAGE

Overdoses (up to 10-fold of the prescribed dose) occurred in patients treated with intravenous topotecan. The primary complication of overdose is bone marrow suppression. The observed signs and symptoms of overdose are consistent with the known adverse reactions associated with topotecan hydrochloride for injection for intravenous use [see **Adverse Reactions (6.1, 6.2)**].

In addition, elevated hepatic enzymes and mucositis have been reported following overdose. One patient received a single dose of 40 mg/m<sup>2</sup> of intravenous topotecan and developed gastrointestinal toxicity, skin toxicity, and myelosuppression leading to septic shock. Another patient received a single dose of 35 mg/m<sup>2</sup> and experienced severe, reversible neutropenia.

There is no known antidote for overdose with topotecan hydrochloride for injection. If an overdose is suspected, monitor the patient for bone marrow suppression and institute supportive-care measures (such as prophylactic G-CSF and antibiotic therapy) as appropriate.

## 11 DESCRIPTION

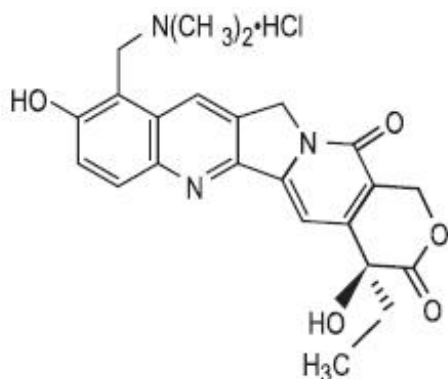
Topotecan hydrochloride for injection is a semi-synthetic derivative of camptothecin and is an anti-tumor drug with topoisomerase I-inhibitory activity.

Topotecan hydrochloride for Injection is supplied as a sterile lyophilized, buffered, light yellow to greenish powder available in single-dose vials. Each vial contains topotecan hydrochloride equivalent to 4 mg of topotecan as free base. The reconstituted solution ranges in color from yellow to yellow-green and is intended for administration by intravenous infusion.

Inactive ingredients are mannitol 48 mg and tartaric acid 20 mg. Hydrochloric acid and sodium hydroxide may be used to adjust the pH. The solution pH ranges from 2.5 to 3.5.

The chemical name for topotecan hydrochloride is (S)-10-[(dimethylamino)methyl]-4ethyl-4,9-dihydroxy-1*H*-pyrano[3',4':6,7]indolizino [1,2-*b*]quinoline-3,14-(4*H*,12*H*)-dione monohydrochloride. It has the molecular formula C<sub>23</sub>H<sub>23</sub>N<sub>3</sub>O<sub>5</sub>•HCl and a molecular weight of 457.9.

Topotecan hydrochloride has the following structural formula:



It is soluble in water and melts with decomposition at 213° to 218°C.

## 12 CLINICAL PHARMACOLOGY

## 12.1 Mechanism of Action

Topoisomerase I relieves torsional strain in DNA by inducing reversible single-strand breaks. Topotecan binds to the topoisomerase I-DNA complex and prevents religation of these single-strand breaks. The cytotoxicity of topotecan is thought to be due to double-strand DNA damage produced during DNA synthesis, when replication enzymes interact with the ternary complex formed by topotecan, topoisomerase I, and DNA. Mammalian cells cannot efficiently repair these double-strand breaks.

## 12.2 Pharmacodynamics

The dose-limiting toxicity of topotecan is leukopenia. White blood cell count decreases with increasing topotecan dose or topotecan AUC. When topotecan is administered at a dose of 1.5 mg/m<sup>2</sup>/day for 5 days, an 80% to 90% decrease in white blood cell count at nadir is typically observed after the first cycle of therapy.

## 12.3 Pharmacokinetics

The pharmacokinetics of topotecan have been evaluated in cancer patients following doses of 0.5 to 1.5 mg/m<sup>2</sup> administered as a 30-minute infusion. Topotecan exhibits multiexponential pharmacokinetics with a terminal half-life of 2 to 3 hours. Total exposure (AUC) is approximately dose-proportional.

**Distribution:** Binding of topotecan to plasma proteins is about 35%.

**Metabolism:** Topotecan undergoes a reversible pH-dependent hydrolysis of its lactone moiety; it is the lactone form that is pharmacologically active. At pH ≤4, the lactone is exclusively present, whereas the ring-opened hydroxy-acid form predominates at physiologic pH. In vitro studies in human liver microsomes indicate topotecan is metabolized to an N-demethylated metabolite. The mean metabolite:parent AUC ratio was about 3% for total topotecan and topotecan lactone following IV administration.

**Excretion:** Renal clearance is an important determinant of topotecan elimination.

In a mass balance/excretion trial in 4 patients with solid tumors, the overall recovery of total topotecan and its N-desmethyl metabolite in urine and feces over 9 days averaged 73.4% ± 2.3% of the administered IV dose. Mean values of 50.8% ± 2.9% as total topotecan and 3.1% ± 1.0% as N-desmethyl topotecan were excreted in the urine following IV administration.

Fecal elimination of total topotecan accounted for 17.9% ± 3.6% while fecal elimination of N-desmethyl topotecan was 1.7% ± 0.6%. An O-glucuronidation metabolite of topotecan and N-desmethyl topotecan has been identified in the urine. These metabolites, topotecan-O glucuronide and N-desmethyl topotecan-O-glucuronide, were less than 2% of the administered dose.

**Effect of Gender:** The overall mean topotecan plasma clearance in male patients was approximately 24% higher than that in female patients, largely reflecting difference in body size.

**Effect of Age:** Topotecan pharmacokinetics have not been specifically studied in an elderly population, but population pharmacokinetic analysis in female patients did not identify age as a significant factor. Decreased renal clearance, which is common in the elderly, is a more important determinant of topotecan clearance [see **Dosage and Administration (2.3)** and **Use in Specific Populations (8.5)**].

**Effect of Race:** The effect of race on topotecan pharmacokinetics has not been studied.

**Effect of Renal Impairment:** In patients with mild renal impairment (creatinine clearance of 40 to 60 mL/min.), topotecan plasma clearance was decreased to about 67% of the value in patients with normal renal function. In patients with moderate renal impairment (Cl<sub>cr</sub> of 20 to 39 mL/min.), topotecan plasma clearance was reduced to about 34% of the value in control patients, with an increase in half-life. Mean half-life, estimated in 3 patients with renal impairment, was about 5.0 hours. Dosage adjustment is recommended for these patients [see **Dosage and Administration (2.3)**].

Effect of Hepatic Impairment: Plasma clearance in patients with hepatic impairment (serum bilirubin levels between 1.7 and 15.0 mg/dL) was decreased to about 67% of the value in patients without hepatic impairment. Topotecan half-life increased slightly, from 2.0 hours to 2.5 hours, but these patients with hepatic impairment tolerated the usual recommended topotecan dosage regimen.

Drug Interactions: Pharmacokinetic trials of the interaction of topotecan with concomitantly administered medications have not been formally investigated. In vitro inhibition studies using marker substrates known to be metabolized by human P450 CYP1A2, CYP2A6, CYP2C8/9, CYP2C19, CYP2D6, CYP2E, CYP3A, or CYP4A or dihydropyrimidine dehydrogenase indicate that the activities of these enzymes were not altered by topotecan. Enzyme inhibition by topotecan has not been evaluated in vivo.

No pharmacokinetic data are available following topotecan (0.75 mg/m<sup>2</sup>/day for 3 consecutive days) and cisplatin (50 mg/m<sup>2</sup>/day on day 1) in patients with cervical cancer.

Myelosuppression was more severe when topotecan hydrochloride for injection was given in combination with cisplatin. [see **Drug Interactions (7)**].

## 13 NONCLINICAL TOXICOLOGY

### 13.1 Carcinogenesis, Mutagenesis, Impairment Of Fertility

Carcinogenicity testing of topotecan has not been performed. Topotecan is known to be genotoxic to mammalian cells and is a probable carcinogen. Topotecan was mutagenic to L5178Y mouse lymphoma cells and clastogenic to cultured human lymphocytes with and without metabolic activation. It was also clastogenic to mouse bone marrow. Topotecan did not cause mutations in bacterial cells.

Topotecan given to female rats prior to mating at a dose of 1.4 mg/m<sup>2</sup> IV (about equal to the clinical dose on a mg/m<sup>2</sup> basis) caused superovulation possibly related to inhibition of follicular atresia. This dose given to pregnant female rats also caused increased pre-implantation loss. Studies in dogs given 0.4 mg/m<sup>2</sup> IV (about 1/4th the clinical dose on a mg/m<sup>2</sup> basis) of topotecan daily for a month suggest that treatment may cause an increase in the incidence of multinucleated spermatogonial giant cells in the testes. Topotecan may impair fertility in women and men.

## 14 CLINICAL STUDIES

### 14.2 Small Cell Lung Cancer

Topotecan hydrochloride for injection was studied in 426 patients with recurrent or progressive small cell lung cancer in 1 randomized, comparative trial and in 3 single-arm trials.

Randomized Comparative Trial: In a randomized, comparative, Phase 3 trial, 107 patients were treated with topotecan hydrochloride for injection (1.5 mg/m<sup>2</sup>/day × 5 days starting on day 1 of a 21-day course) and 104 patients were treated with CAV (1,000 mg/m<sup>2</sup> cyclophosphamide, 45 mg/m<sup>2</sup> doxorubicin, 2 mg vincristine administered sequentially on day 1 of a 21-day course). All patients were considered sensitive to first-line chemotherapy (responders who then subsequently progressed ≥60 days after completion of first-line therapy). A total of 77% of patients treated with topotecan hydrochloride for injection and 79% of patients treated with CAV received platinum/etoposide with or without other agents as first-line chemotherapy. Response rates, response duration, time to progression, and survival are shown in Table 6.

**Table 6. Efficacy of Topotecan Hydrochloride For Injection Versus CAV (cyclophosphamide-doxorubicin-vincristine) in Small Cell Lung Cancer Patients Sensitive to First-Line Chemotherapy**

Parameter	Topotecan Hydrochloride For Injection (n = 107)	CAV (n = 104)
-----------	---	---------------

Complete response rate	0%	1%
Partial response rate	24%	17%
Overall response rate	24%	18%
Difference in overall response rates	6%	
95% Confidence interval of the difference	(-6 to 18%)	
Response duration <sup>a</sup> (weeks)	n = 26	n = 19
Median	14.4	15.3
95% Confidence interval	13.1 to 18.0	13.1 to 23.1
Hazard-ratio		
(Topotecan hydrochloride for injection :CAV)	1.42 (0.73 to 2.76)	
(95% CI)		
(P-value)	(0.30)	
Time to progression (weeks)		
Median	13.3	12.3
95% Confidence interval	11.4 to 16.4	11.0 to 14.1
Hazard-ratio		
(Topotecan hydrochloride for injection :CAV)	0.92 (0.69 to 1.22)	
(95% CI)		
(P-value)	(0.55)	
Survival (weeks)		
Median	25.0	24.7
95% Confidence interval	20.6 to 29.6	21.7 to 30.3
Hazard-ratio		
(Topotecan hydrochloride for injection :CAV)	1.04 (0.78 to 1.39)	
(95% CI)		
(P-value)	(0.80)	

a The calculation for duration of response was based on the interval between first response and time to progression.

The time to response was similar in both arms: topotecan hydrochloride for injection median of 6 weeks (range 2.4 to 15.7) versus CAV median 6 weeks (range 5.1 to 18.1).

Changes on a disease-related symptom scale in patients who received topotecan hydrochloride for injection or who received CAV are presented in Table 7. It should be noted that not all patients had all symptoms, nor did all patients respond to all questions. Each symptom was rated on a 4-category scale with an improvement defined as a change in 1 category from baseline sustained over 2 courses. Limitations in interpretation of the rating scale and responses preclude formal statistical analysis.

**Table 7. Percentage of Patients With Symptom Improvement: Topotecan Hydrochloride For Injection Versus CAV in Patients With Small Cell Lung Cancer**

Symptom	Topotecan Hydrochloride For Injection (n = 107)	CAV(n = 104)
---------	---	--------------



	nb	(%)	nb	(%)
Shortness of breath	68	(28)	61	(7)
Interference with daily activity	67	(27)	63	(11)
Fatigue	70	(23)	65	(9)
Hoarseness	40	(33)	38	(13)
Cough	69	(25)	61	(15)
Insomnia	57	(33)	53	(19)
Anorexia	56	(32)	57	(16)
Chest pain	44	(25)	41	(17)
Hemoptysis	15	(27)	12	(33)

<sup>a</sup> Defined as improvement sustained over at least 2 courses compared with baseline.

<sup>b</sup> Number of patients with baseline and at least 1 post-baseline assessment.

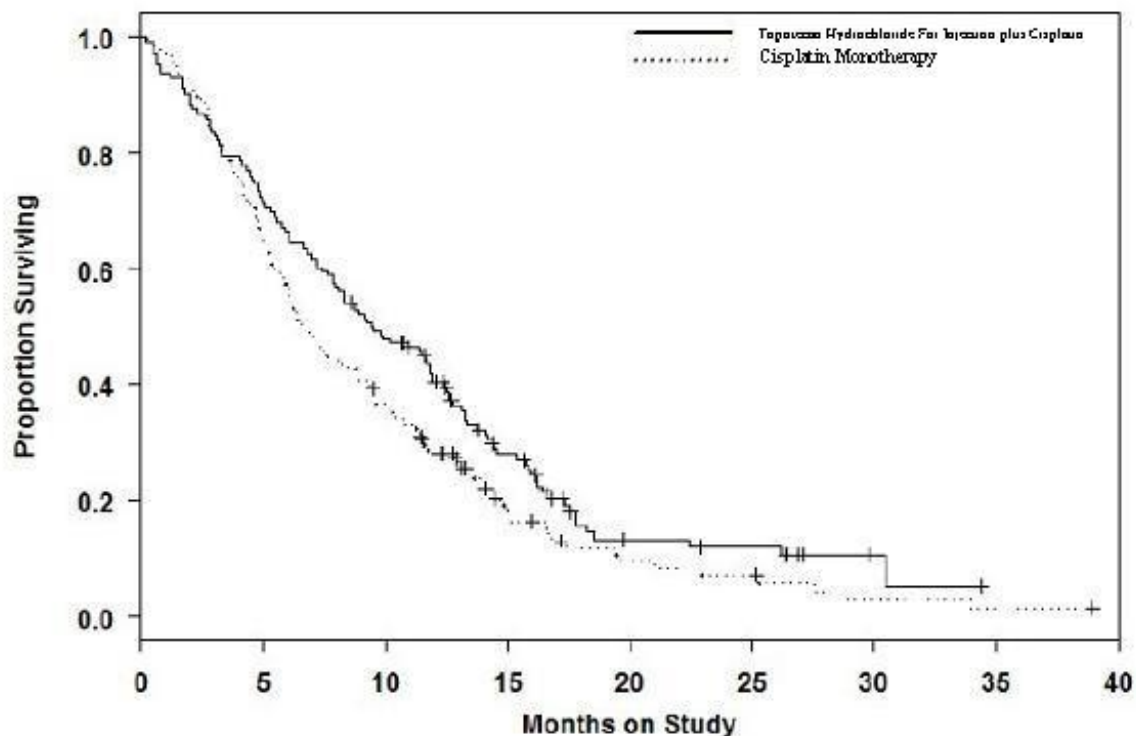
Single-Arm Trials: Topotecan hydrochloride for injection was also studied in 3 open-label, non-comparative trials in a total of 319 patients with recurrent or progressive small cell lung cancer after treatment with first-line chemotherapy. In all 3 trials, patients were stratified as either sensitive (responders who then subsequently progressed  $\geq 90$  days after completion of first-line therapy) or refractory (no response to first-line chemotherapy or who responded to first-line therapy and then progressed within 90 days of completing first-line therapy). Response rates ranged from 11% to 31% for sensitive patients and 2% to 7% for refractory patients. Median time to progression and median survival were similar in all 3 studies and the comparative trial.

### 14.3 Cervical Cancer

In a comparative trial, 147 eligible women were randomized to topotecan hydrochloride for injection (0.75 mg/m<sup>2</sup>/day IV over 30 minutes  $\times$  3 consecutive days starting on day 1 of a 21-day course) plus cisplatin (50 mg/m<sup>2</sup> on day 1) and 146 eligible women were randomized to cisplatin (50 mg/m<sup>2</sup> IV on day 1 of a 21-day course). All patients had histologically confirmed Stage IVB, recurrent, or persistent carcinoma of the cervix considered not amenable to curative treatment with surgery and/or radiation. Fifty-six percent (56%) of patients treated with topotecan hydrochloride for injection plus cisplatin and 56% of patients treated with cisplatin had received prior cisplatin with or without other agents as first-line chemotherapy.

Median survival of eligible patients receiving topotecan hydrochloride for injection plus cisplatin was 9.4 months (95% CI: 7.9 to 11.9) compared to 6.5 months (95% CI: 5.8 to 8.8) among patients randomized to cisplatin alone with a log rank P-value of 0.033 (significance level was 0.044 after adjusting for the interim analysis). The unadjusted hazard ratio for overall survival was 0.76 (95% CI: 0.59 to 0.98).

### Figure 1. Overall Survival Curves Comparing Topotecan Hydrochloride For Injection plus Cisplatin versus Cisplatin Monotherapy in Cervical Cancer Patients



**Number at Risk**

Topotecan Hydrochloride For Injection plus Cisplatin	147	104	69	32	10	8	2	0	0
Cisplatin Monotherapy	146	93	52	17	8	6	2	1	0

## 15 REFERENCES

- 1.Preventing Occupational Exposures to Antineoplastic and Other Hazardous Drugs in Health Care Settings. NIOSH Alert 2004-165. 2.OSHA Technical Manual, TED 1-0.15A, Section VI: Chapter
2. Controlling Occupational Exposure to Hazardous Drugs. OSHA, 1999.  
[http://www.osha.gov/dts/osta/otm/otm\\_vi/otm\\_vi\\_2.html](http://www.osha.gov/dts/osta/otm/otm_vi/otm_vi_2.html)
- 3.American Society of Health-System Pharmacists. ASHP Guidelines on Handling Hazardous Drugs. Am J Health-Syst Pharm. 2006;63:1172-1193.
- 4.Polovich M, White JM, Kelleher LO (eds.) 2005. Chemotherapy and Biotherapy Guidelines and Recommendations for Practice. (2<sup>nd</sup> ed) Pittsburgh, PA: Oncology Nursing Society.

## 16 HOW SUPPLIED/STORAGE AND HANDLING

Topotecan hydrochloride for injection is supplied in 4 mg (free base) single-dose vials packaged in a carton containing 1vial NDC 55390-370-10

**Storage:** Store the vials protected from light in the original cartons at 20°-25°C (68°-77°F); [See USP Controlled Room Temperature].

## 17 PATIENT COUNSELING INFORMATION

### 17.1 Bone Marrow Suppression

Inform patients that topotecan hydrochloride for injection decreases blood cell counts such as white blood cells, platelets, and red blood cells. Patients who develop fever, other signs of infection (e.g.,

chills, cough, or burning pain on urination), or bleeding while on therapy should notify their physician promptly. Inform patients that frequent blood tests will be performed while taking topotecan hydrochloride for injection to monitor for the occurrence of bone marrow suppression.

### 17.2 Pregnancy and Breastfeeding

Advise patients to use effective contraceptive measures to prevent pregnancy and to avoid breastfeeding during treatment with topotecan hydrochloride for injection.

### 17.3 Asthenia and Fatigue

Inform patients that topotecan hydrochloride for injection may cause asthenia or fatigue. If these symptoms occur, caution should be observed when driving or operating machinery.

Topotecan hydrochloride for injection is a registered trademark of GlaxoSmithKline.

Rx only

Manufactured for:

**Dr. Reddy's Laboratories Limited**

By: Cipla Limited,

at S-103 to S-105 & S-107 to S-112,

Verna Industrial Estate,

Verna Goa – 403722, INDIA

Distributed by:

**Bedford Laboratories™**

Bedford, OH 44146

Issued: 0414

## PACKAGE LABEL.PRINCIPAL DISPLAY PANEL SECTION

Vial

**TOPOTECAN**  
**HYDROCHLORIDE**  
**FOR INJECTION**

**4 mg (base)**

4 mg Single-Dose Vial  
**FOR INTRAVENOUS USE**  
Cytotoxic  
Lyophilized  
**Must be diluted**  
Rx Only

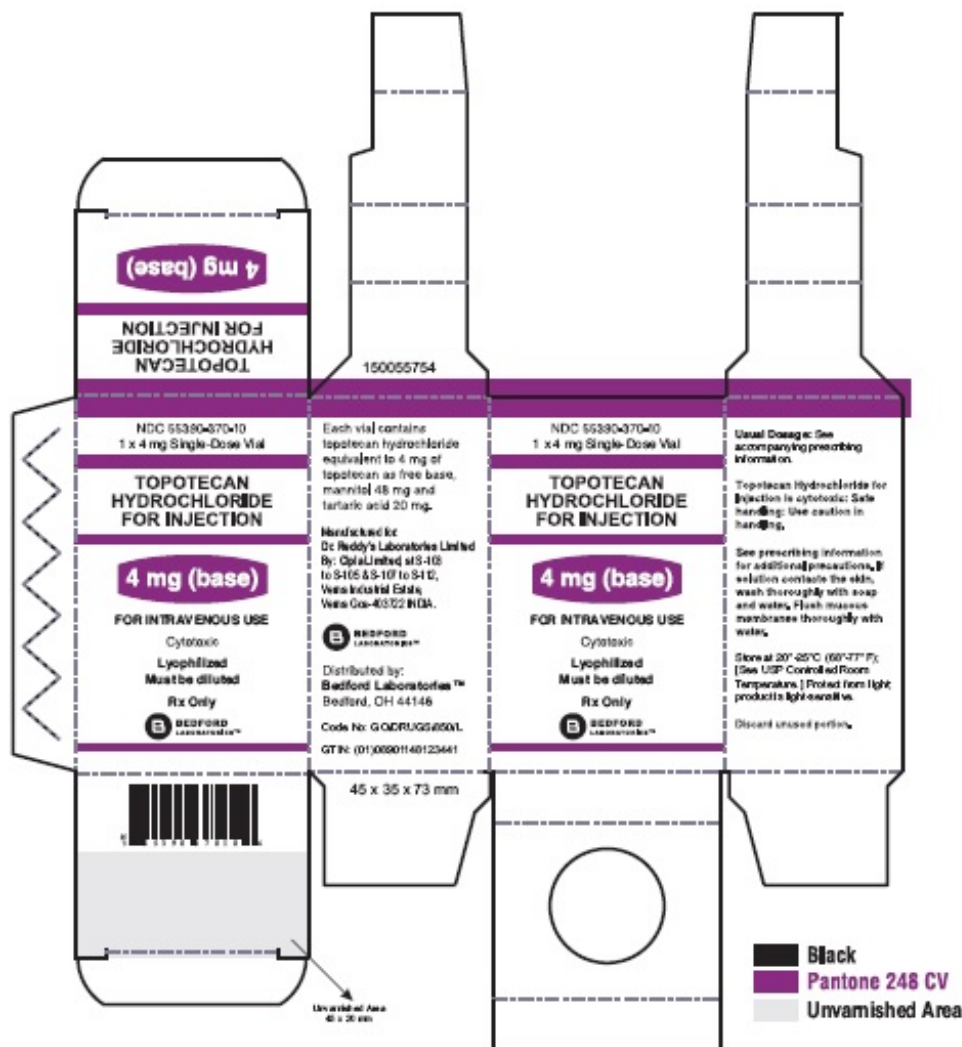
NDC 55390-370-10  
**Usual Dosage:** See package insert.  
Store at 20°-25°C (68°-77°F); [See USP.]  
Protect from light; product is light sensitive.  
**Safe handling:** Use caution in handling. See package insert for additional precautions. If solution contacts the skin, wash thoroughly with soap and water. Flush mucous membranes thoroughly with water.  
Discard unused portion.

Distributed by:  
**Bedford Laboratories™**  
Bedford, OH 44146  
**TOP-V00**  
Code No: GQYDRUGS1850L  
150055755

Manufactured for:  
**Dr. Reddy's Laboratories Limited**  
By: Cipla Limited, at S-103 to S-105 &  
S-107 to S-112, Verna Industrial Estate,  
Verna Goa-403722 INDIA.

553901370104

Unvarnished Area Consists of: 2D Barcode, Lot Number, Expiry Date and Serial Number  
Vial Carton



## TOPOTECAN HYDROCHLORIDE

topotecan hydrochloride injection, powder, lyophilized, for solution

### Product Information

<b>Product Type</b>	HUMAN PRESCRIPTION DRUG	<b>Item Code (Source)</b>	NDC:55390-370
<b>Route of Administration</b>	INTRAVENOUS		

### Active Ingredient/Active Moiety

Ingredient Name	Basis of Strength	Strength
Topotecan Hydrochloride (UNII: 956S425ZCY) (Topotecan - UNII:7M7YKX2N15)	Topotecan	4 mg in 4 mL

### Inactive Ingredients

Ingredient Name	Strength
<b>Mannitol</b> (UNII: 3OWL53L36A)	
<b>Tartaric Acid</b> (UNII: W4888I119H)	
<b>Hydrochloric Acid</b> (UNII: QTT17582CB)	
<b>Sodium Hydroxide</b> (UNII: 55X04QC32I)	

### Packaging

#	Item Code	Package Description	Marketing Start Date	Marketing End Date
1	NDC:55390-370-10	1 in 1 CARTON	12/01/2020	
1		4 mL in 1 VIAL; Type 0: Not a Combination Product		

### Marketing Information

Marketing Category	Application Number or Monograph Citation	Marketing Start Date	Marketing End Date
ANDA	ANDA201191	04/18/2011	

**Labeler** - Bedford Laboratories (884528407)

**Registrant** - Dr. Reddy's Laboratories Limited (650562841)

### Establishment

Name	Address	ID/FEI	Business Operations
Cipla Ltd.		650072015	analysis(55390-370) , manufacture(55390-370)

Revised: 4/2016

Bedford Laboratories