

IRBESARTAN- irbesartan tablet
REMEDYREPACK INC.

Irbesartan Tablets USP

WARNING: FETAL TOXICITY

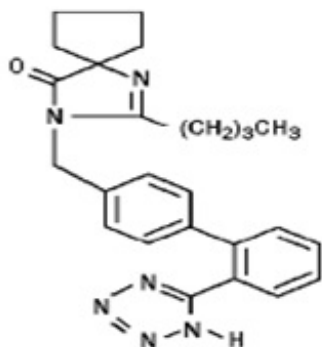
- **When pregnancy is detected, discontinue irbesartan as soon as possible.**
- **Drugs that act directly on the renin-angiotensin system can cause injury and death to the developing fetus. See WARNINGS: Fetal Toxicity.**

DESCRIPTION

Irbesartan USP is an angiotensin II receptor (AT1 subtype) antagonist.

Irbesartan USP is a non-peptide compound, chemically described as a 2-butyl-3-[p-(o-1H-tetrazol-5-ylphenyl)benzyl]-1,3-diazaspiro[4.4]non-1-en-4-one.

Its empirical formula is C₂₅H₂₈N₆O, and the structural formula:



Irbesartan USP is a white to off-white crystalline powder with a molecular weight of 428.5. It is a nonpolar compound with a partition coefficient (octanol/water) of 10.1 at pH of 7.4. Irbesartan is slightly soluble in alcohol and methylene chloride and practically insoluble in water.

Irbesartan is available for oral administration in unscored tablets containing 75 mg, 150 mg, or 300 mg of Irbesartan USP. Inactive ingredients include: calcium stearate, carboxy methyl cellulose calcium, colloidal silicon dioxide, microcrystalline cellulose and povidone.

CLINICAL PHARMACOLOGY

Mechanism of Action

Angiotensin II is a potent vasoconstrictor formed from angiotensin I in a reaction catalyzed by

angiotensin-converting enzyme (ACE, kininase II). Angiotensin II is the principal pressor agent of the renin-angiotensin system (RAS) and also stimulates aldosterone synthesis and secretion by adrenal cortex, cardiac contraction, renal resorption of sodium, activity of the sympathetic nervous system, and smooth muscle cell growth. Irbesartan blocks the vasoconstrictor and aldosterone-secreting effects of angiotensin II by selectively binding to the AT₁ angiotensin II receptor. There is also an AT₂ receptor in many tissues, but it is not involved in cardiovascular homeostasis.

Irbesartan is a specific competitive antagonist of AT₁ receptors with a much greater affinity (more than 8500-fold) for the AT₁ receptor than for the AT₂ receptor and no agonist activity.

Blockade of the AT₁ receptor removes the negative feedback of angiotensin II on renin secretion, but the resulting increased plasma renin activity and circulating angiotensin II do not overcome the effects of irbesartan on blood pressure.

Irbesartan does not inhibit ACE or renin or affect other hormone receptors or ion channels known to be involved in the cardiovascular regulation of blood pressure and sodium homeostasis. Because irbesartan does not inhibit ACE, it does not affect the response to bradykinin; whether this has clinical relevance is not known.

Pharmacokinetics

Irbesartan is an orally active agent that does not require biotransformation into an active form. The oral absorption of irbesartan is rapid and complete with an average absolute bioavailability of 60 to 80%. Following oral administration of irbesartan, peak plasma concentrations of irbesartan are attained at 1.5 to 2 hours after dosing. Food does not affect the bioavailability of irbesartan.

Irbesartan exhibits linear pharmacokinetics over the therapeutic dose range.

The terminal elimination half-life of irbesartan averaged 11 to 15 hours. Steady-state concentrations are achieved within 3 days. Limited accumulation of irbesartan (<20%) is observed in plasma upon repeated once-daily dosing.

Metabolism and Elimination

Irbesartan is metabolized via glucuronide conjugation and oxidation. Following oral or intravenous administration of ¹⁴C-labeled irbesartan, more than 80% of the circulating plasma radioactivity is attributable to unchanged irbesartan. The primary circulating metabolite is the inactive irbesartan glucuronide conjugate (approximately 6%). The remaining oxidative metabolites do not add appreciably to irbesartan's pharmacologic activity.

Irbesartan and its metabolites are excreted by both biliary and renal routes. Following either oral or intravenous administration of ¹⁴C-labeled irbesartan, about 20% of radioactivity is recovered in the urine and the remainder in the feces, as irbesartan or irbesartan glucuronide.

In vitro studies of irbesartan oxidation by cytochrome P450 isoenzymes indicated irbesartan was oxidized primarily by 2C9; metabolism by 3A4 was negligible. Irbesartan was neither metabolized by, nor did it substantially induce or inhibit, isoenzymes commonly associated with drug metabolism (1A1, 1A2, 2A6, 2B6, 2D6, 2E1). There was no induction or inhibition of 3A4.

Distribution

Irbesartan is 90% bound to serum proteins (primarily albumin and α_1 -acid glycoprotein) with negligible binding to cellular components of blood. The average volume of distribution is 53 liters to 93 liters. Total plasma and renal clearances are in the range of 157 mL/min to 176 mL/min and 3 mL/min to 3.5 mL/min, respectively. With repetitive dosing, irbesartan accumulates to no clinically relevant extent. Studies in animals indicate that radiolabeled irbesartan weakly crosses the blood-brain barrier and placenta. Irbesartan is excreted in the milk of lactating rats.

Special Populations

Gender

No gender-related differences in pharmacokinetics were observed in healthy elderly (age 65 to 80 years) or in healthy young (age 18 to 40 years) subjects. In studies of hypertensive patients, there was no gender difference in half-life or accumulation, but somewhat higher plasma concentrations of irbesartan were observed in females (11 to 44%). No gender-related dosage adjustment is necessary.

Geriatric

In elderly subjects (age 65 to 80 years), irbesartan elimination half-life was not significantly altered, but AUC and C_{max} values were about 20% to 50% greater than those of young subjects (age 18 to 40 years). No dosage adjustment is necessary in the elderly.

Race

In healthy black subjects, irbesartan AUC values were approximately 25% greater than whites; there were no differences in C_{max} values.

Renal Insufficiency

The pharmacokinetics of irbesartan were not altered in patients with renal impairment or in patients on hemodialysis. Irbesartan is not removed by hemodialysis. No dosage adjustment is necessary in patients with mild to severe renal impairment unless a patient with renal impairment is also volume depleted. (See **WARNINGS: Hypotension in Volume- or Salt-Depleted Patients** and **DOSAGE AND ADMINISTRATION**.)

Hepatic Insufficiency

The pharmacokinetics of irbesartan following repeated oral administration were not significantly affected in patients with mild to moderate cirrhosis of the liver. No dosage adjustment is necessary in patients with hepatic insufficiency.

Drug Interactions

(See **PRECAUTIONS: Drug Interactions**.)

Pharmacodynamics

In healthy subjects, single oral irbesartan doses of up to 300 mg produced dose-dependent inhibition of the pressor effect of angiotensin II infusions. Inhibition was complete (100%) 4 hours following oral doses of 150 mg or 300 mg and partial inhibition was sustained for 24 hours (60% and 40% at 300 mg and 150 mg, respectively).

In hypertensive patients, angiotensin II receptor inhibition following chronic administration of irbesartan causes a 1.5- to 2-fold rise in angiotensin II plasma concentration and a 2- to 3-fold increase in plasma renin levels. Aldosterone plasma concentrations generally decline following irbesartan administration, but serum potassium levels are not significantly affected at recommended doses.

In hypertensive patients, chronic oral doses of irbesartan (up to 300 mg) had no effect on glomerular filtration rate, renal plasma flow, or filtration fraction. In multiple dose studies in hypertensive patients, there were no clinically important effects on fasting triglycerides, total cholesterol, HDL-cholesterol, or fasting glucose concentrations. There was no effect on serum uric acid during chronic oral administration, and no uricosuric effect.

CLINICAL STUDIES

Hypertension

The antihypertensive effects of irbesartan were examined in 7 major placebo-controlled 8 to 12 week trials in patients with baseline diastolic blood pressures of 95 mmHg to 110 mmHg. Doses of 1 mg to 900 mg were included in these trials in order to fully explore the dose-range of irbesartan. These studies allowed comparison of once- or twice-daily regimens at 150 mg/day, comparisons of peak and

trough effects, and comparisons of response by gender, age, and race. Two of the 7 placebo-controlled trials identified above examined the antihypertensive effects of irbesartan and hydrochlorothiazide in combination.

The 7 studies of irbesartan monotherapy included a total of 1915 patients randomized to irbesartan (1 to 900 mg) and 611 patients randomized to placebo. Once-daily doses of 150 mg and 300 mg provided statistically and clinically significant decreases in systolic and diastolic blood pressure with trough (24 hours post-dose) effects after 6 to 12 weeks of treatment compared to placebo, of about 8 to 10/5 to 6 mmHg and 8 to 12/5 to 8 mmHg, respectively. No further increase in effect was seen at dosages greater than 300 mg. The dose-response relationships for effects on systolic and diastolic pressure are shown in Figures 1 and 2.

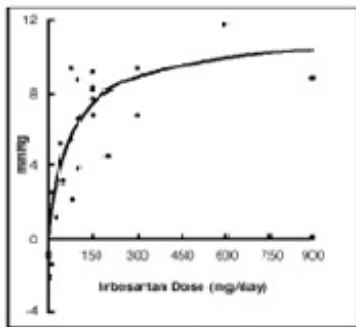


Figure 1. Placebo-subtracted reduction in trough SeDBP, integrated analysis

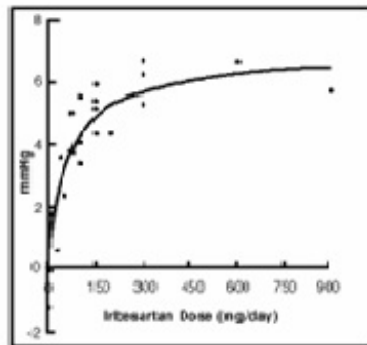


Figure 2. Placebo-subtracted reduction in trough SeDBP, integrated analysis

Once-daily administration of therapeutic doses of irbesartan gave peak effects at around 3 to 6 hours and, in one ambulatory blood pressure monitoring study, again around 14 hours. This was seen with both once-daily and twice-daily dosing. Trough-to-peak ratios for systolic and diastolic response were generally between 60% to 70%. In a continuous ambulatory blood pressure monitoring study, once-daily dosing with 150 mg gave trough and mean 24-hour responses similar to those observed in patients receiving twice-daily dosing at the same total daily dose.

In controlled trials, the addition of irbesartan to hydrochlorothiazide doses of 6.25 mg, 12.5 mg, or 25 mg produced further dose-related reductions in blood pressure similar to those achieved with the same monotherapy dose of irbesartan. HCTZ also had an approximately additive effect.

Analysis of age, gender, and race subgroups of patients showed that men and women, and patients over and under 65 years of age, had generally similar responses. Irbesartan was effective in reducing blood pressure regardless of race, although the effect was somewhat less in blacks (usually a low-renin population).

The effect of irbesartan is apparent after the first dose, and it is close to its full observed effect at 2 weeks. At the end of an 8-week exposure, about 2/3 of the antihypertensive effect was still present one week after the last dose. Rebound hypertension was not observed. There was essentially no change in average heart rate in irbesartan-treated patients in controlled trials.

Nephropathy in Type 2 Diabetic Patients

The Irbesartan Diabetic Nephropathy Trial (IDNT) was a randomized, placebo- and active-controlled, double-blind multicenter study, conducted worldwide in 1715 patients with type 2 diabetes, hypertension (SeSBP >135 mmHg or SeDBP >85 mmHg), and nephropathy (serum creatinine 1 to 3 mg/dL in females or 1.2 to 3 mg/dL in males and proteinuria \geq 900 mg/day). Patients were randomized to receive irbesartan 75 mg, amlodipine 2.5 mg, or matching placebo once-daily. Patients were titrated to a maintenance dose of irbesartan 300 mg, or amlodipine 10 mg, as tolerated. Additional antihypertensive agents (excluding

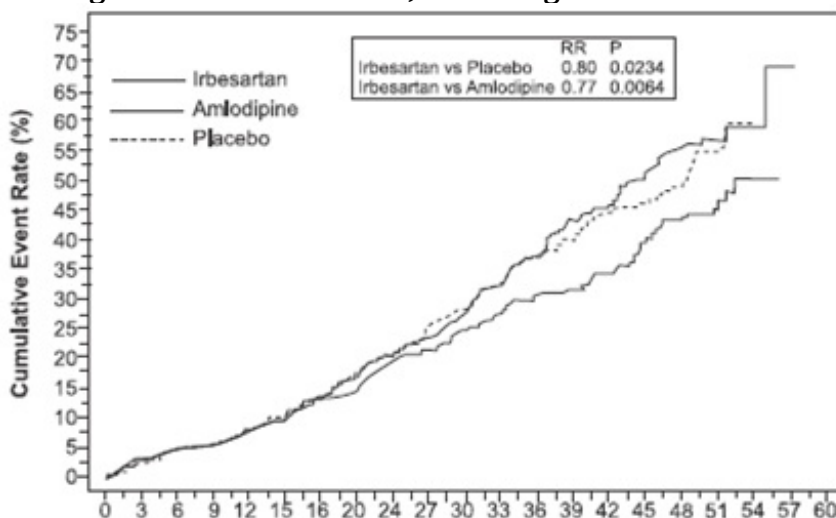
ACE inhibitors, angiotensin II receptor antagonists and calcium channel blockers) were added as needed to achieve blood pressure goal ($\leq 135/85$ or 10 mmHg reduction in systolic blood pressure if higher than 160 mmHg) for patients in all groups.

The study population was 66.5% male, 72.9% below 65 years of age and 72% White, (Asian/Pacific Islander 5%, Black 13.3%, Hispanic 4.8%). The mean baseline seated systolic and diastolic blood pressures were 159 mmHg and 87 mmHg, respectively. The patients entered the trial with a mean serum creatinine of 1.7 mg/dL and mean proteinuria of 4144 mg/day.

The mean blood pressure achieved was 142/77 mmHg for irbesartan, 142/76 mmHg for amlodipine, and 145/79 mmHg for placebo. Overall, 83.0% of patients received the target dose of irbesartan more than 50% of the time. Patients were followed for a mean duration of 2.6 years.

The primary composite endpoint was the time to occurrence of any one of the following events: doubling of baseline serum creatinine, end-stage renal disease (ESRD; defined by serum creatinine ≥ 6 mg/dL, dialysis, or renal transplantation) or death. Treatment with irbesartan resulted in a 20% risk reduction versus placebo ($p=0.0234$) (see Figure 3 and Table 1). Treatment with irbesartan also reduced the occurrence of sustained doubling of serum creatinine as a separate endpoint (33%), but had no significant effect on ESRD alone and no effect on overall mortality (see Table 1).

Figure 3
IDNT: Kaplan-Meier Estimates Of Primary Endpoint
(Doubling of Serum Creatinine, End-Stage Renal Disease or All-Cause Mortality)



The percentages of patients experiencing an event during the course of the study can be seen in Table 1 below:

| Table 1: IDNT: Components of Primary Composite Endpoint | | | | | | | |
|--|----------------------------|-------------------------|-----------------|---------------------|----------------------------|-----------------|-----------|
| | Irbesartan N=579 (%) | Comparison With Placebo | | | Comparison With Amlodipine | | |
| | | Placebo N=569 (%) | Hazard Ratio | 95% CI | Amlodipine N=567 (%) | Hazard Ratio | 95% CI |
| Primary Composite | 32.6 | 39 | 0.80 | 0.66-0.97(p=0.0234) | 41.1 | 0.77 | 0.63-0.93 |

| Endpoint | | | | | | | |
|---|------|------|------|-----------|------|------|-----------|
| Breakdown of first occurring event contributing to primary endpoint | | | | | | | |
| 2x creatinine | 14.2 | 19.5 | --- | --- | 22.8 | --- | --- |
| ESRD | 7.4 | 8.3 | --- | --- | 8.8 | --- | --- |
| Death | 11.1 | 11.2 | --- | --- | 9.5 | --- | --- |
| Incidence of total events over entire period of follow-up | | | | | | | |
| 2x creatinine | 16.9 | 23.7 | 0.67 | 0.52-0.87 | 25.4 | 0.63 | 0.49-0.81 |
| ESRD | 14.2 | 17.8 | 0.77 | 0.57-1.03 | 18.3 | 0.77 | 0.57-1.03 |
| Death | 15 | 16.3 | 0.92 | 0.69-1.23 | 14.6 | 1.04 | 0.77-1.40 |

The secondary endpoint of the study was a composite of cardiovascular mortality and morbidity (myocardial infarction, hospitalization for heart failure, stroke with permanent neurological deficit, amputation). There were no statistically significant differences among treatment groups in these endpoints. Compared with placebo, irbesartan significantly reduced proteinuria by about 27%, an effect that was evident within 3 months of starting therapy. Irbesartan significantly reduced the rate of loss of renal function (glomerular filtration rate), as measured by the reciprocal of the serum creatinine concentration, by 18.2%.

Table 2 presents results for demographic subgroups. Subgroup analyses are difficult to interpret and it is not known whether these observations represent true differences or chance effects. For the primary endpoint, irbesartan's favorable effects were seen in patients also taking other antihypertensive medications (angiotensin II receptor antagonists, angiotensin-converting-enzyme inhibitors and calcium channel blockers were not allowed), oral hypoglycemic agents, and lipid-lowering agents.

| Table 2: IDNT: Primary Efficacy Outcome Within Subgroups | | | | |
|---|-------------------------------------|----------------------------------|-------------------------|---------------|
| Baseline Factors | Irbesartan N=579 (%) | Comparison With Placebo | | |
| | | Placebo N=569 (%) | Hazard Ratio | 95% CI |
| Gender | | | | |
| Male | 27.5 | 36.7 | 0.68 | 0.53-0.88 |
| Female | 42.3 | 44.6 | 0.98 | 0.72-1.34 |
| Race | | | | |
| White | 29.5 | 37.3 | 0.75 | 0.60-0.95 |
| Non-White | 42.6 | 43.5 | 0.95 | 0.67-1.34 |
| Age (years) | | | | |

| | | | | |
|------|------|------|------|-----------|
| < 65 | 31.8 | 39.9 | 0.77 | 0.62-0.97 |
| ≥ 65 | 35.1 | 36.8 | 0.88 | 0.61-1.29 |

INDICATIONS & USAGE

Hypertension

Irbesartan tablet USP is indicated for the treatment of hypertension. It may be used alone or in combination with other antihypertensive agents.

Nephropathy in Type 2 Diabetic Patients

Irbesartan tablet USP is indicated for the treatment of diabetic nephropathy with an elevated serum creatinine and proteinuria (>300 mg/day) in patients with type 2 diabetes and hypertension. In this population, irbesartan tablet USP reduces the rate of progression of nephropathy as measured by the occurrence of doubling of serum creatinine or end-stage renal disease (need for dialysis or renal transplantation) (see **CLINICAL PHARMACOLOGY: Clinical Studies**).

CONTRAINDICATIONS

Irbesartan tablet USP is contraindicated in patients who are hypersensitive to any component of this product.

Do not co-administer aliskiren with irbesartan tablet USP in patients with diabetes (see PRECAUTIONS, Drug Interactions).

WARNINGS

Fetal Toxicity

Pregnancy Category D

Use of drugs that act on the renin-angiotensin system during the second and third trimesters of pregnancy reduces fetal renal function and increases fetal and neonatal morbidity and death. Resulting oligohydramnios can be associated with fetal lung hypoplasia and skeletal deformations. Potential neonatal adverse effects include skull hypoplasia, anuria, hypotension, renal failure, and death. When pregnancy is detected, discontinue irbesartan as soon as possible. These adverse outcomes are usually associated with use of these drugs in the second and third trimesters of pregnancy. Most epidemiologic studies examining fetal abnormalities after exposure to antihypertensive use in the first trimester have not distinguished drugs affecting the renin-angiotensin system from other antihypertensive agents. Appropriate management of maternal hypertension during pregnancy is important to optimize outcomes for both mother and fetus.

In the unusual case that there is no appropriate alternative to therapy with drugs affecting the renin-angiotensin system for a particular patient, apprise the mother of the potential risk to the fetus. Perform serial ultrasound examinations to assess the intra-amniotic environment. If oligohydramnios is observed, discontinue irbesartan, unless it is considered life saving for the mother. Fetal testing may be appropriate, based on the week of pregnancy. Patients and physicians should be aware, however, that oligohydramnios may not appear until after the fetus has sustained irreversible injury. Closely observe

infants with histories of *in utero* exposure to irbesartan for hypotension, oliguria, and hyperkalemia (see **PRECAUTIONS: Pediatric Use**).

When pregnant rats were treated with irbesartan from day 0 to day 20 of gestation (oral doses of 50 mg/kg/day, 180 mg/kg/day, and 650 mg/kg/day), increased incidences of renal pelvic cavitation, hydroureter and/or absence of renal papilla were observed in fetuses at doses ≥ 50 mg/kg/day (approximately equivalent to the maximum recommended human dose [MRHD], 300 mg/day, on a body surface area basis). Subcutaneous edema was observed in fetuses at doses ≥ 180 mg/kg/day (about 4 times the MRHD on a body surface area basis). As these anomalies were not observed in rats in which irbesartan exposure (oral doses of 50, 150, and 450 mg/kg/day) was limited to gestation days 6 to 15, they appear to reflect late gestational effects of the drug. In pregnant rabbits, oral doses of 30 mg irbesartan/kg/day were associated with maternal mortality and abortion. Surviving females receiving this dose (about 1.5 times the MRHD on a body surface area basis) had a slight increase in early resorptions and a corresponding decrease in live fetuses. Irbesartan was found to cross the placental barrier in rats and rabbits.

Radioactivity was present in the rat and rabbit fetus during late gestation and in rat milk following oral doses of radiolabeled irbesartan.

Hypotension in Volume- or Salt-Depleted Patients

Excessive reduction of blood pressure was rarely seen ($<0.1\%$) in patients with uncomplicated hypertension. Initiation of antihypertensive therapy may cause symptomatic hypotension in patients with intravascular volume- or sodium-depletion, e.g., in patients treated vigorously with diuretics or in patients on dialysis. Such volume depletion should be corrected prior to administration of irbesartan, or a low starting dose should be used (see **DOSAGE AND ADMINISTRATION**).

If hypotension occurs, the patient should be placed in the supine position and, if necessary, given an intravenous infusion of normal saline. A transient hypotensive response is not a contraindication to further treatment, which usually can be continued without difficulty once the blood pressure has stabilized.

PRECAUTIONS

Impaired Renal Function

As a consequence of inhibiting the renin-angiotensin-aldosterone system, changes in renal function may be anticipated in susceptible individuals. In patients whose renal function may depend on the activity of the renin-angiotensin-aldosterone system (eg, patients with severe congestive heart failure), treatment with angiotensin-converting-enzyme inhibitors has been associated with oliguria and/or progressive azotemia and (rarely) with acute renal failure and/or death. Irbesartan would be expected to behave similarly.

In studies of ACE inhibitors in patients with unilateral or bilateral renal artery stenosis, increases in serum creatinine or BUN have been reported. There has been no known use of irbesartan in patients with unilateral or bilateral renal artery stenosis, but a similar effect should be anticipated.

Information for Patients

Pregnancy

Female patients of childbearing age should be told about the consequences of exposure to irbesartan during pregnancy. Discuss treatment options with women planning to become pregnant. Patients should be asked to report pregnancies to their physicians as soon as possible.

Drug Interactions

Lithium: Increases in serum lithium concentrations and lithium toxicity have been reported with concomitant use of irbesartan or thiazide diuretics. Monitor lithium levels in patients receiving irbesartan and lithium.

In vitro studies show significant inhibition of the formation of oxidized irbesartan metabolites with the known cytochrome CYP 2C9 substrates/inhibitors sulphenazole, tolbutamide and nifedipine. However, in clinical studies the consequences of concomitant irbesartan on the pharmacodynamics of warfarin were negligible. Based on *in vitro* data, no interaction would be expected with drugs whose metabolism is dependent upon cytochrome P450 isoenzymes 1A1, 1A2, 2A6, 2B6, 2D6, 2E1, or 3A4.

In separate studies of patients receiving maintenance doses of warfarin, hydrochlorothiazide, or digoxin, irbesartan administration for 7 days had no effect on the pharmacodynamics of warfarin (prothrombin time) or pharmacokinetics of digoxin. The pharmacokinetics of irbesartan were not affected by coadministration of nifedipine or hydrochlorothiazide.

Concomitant use of potassium-sparing diuretics, potassium supplements, or salt substitutes containing potassium may lead to increases in serum potassium.

Non-Steroidal Anti-Inflammatory Agents Including Selective Cyclooxygenase-2 Inhibitors (COX-2 Inhibitors)

In patients who are elderly, volume-depleted (including those on diuretic therapy), or with compromised renal function, coadministration of NSAIDs, including selective COX-2 inhibitors, with angiotensin II receptor antagonists, including irbesartan, may result in deterioration of renal function, including possible acute renal failure. These effects are usually reversible. Monitor renal function periodically in patients receiving irbesartan and NSAID therapy.

The antihypertensive effect of angiotensin II receptor antagonists, including irbesartan, may be attenuated by NSAIDs including selective COX-2 inhibitors.

Dual Blockade of the Renin-Angiotensin System (RAS)

Dual blockade of the RAS with angiotensin-receptor blockers, ACE inhibitors, or aliskiren is associated with increased risks of hypotension, hyperkalemia, and changes in renal function (including acute renal failure) compared to monotherapy. Closely monitor blood pressure, renal function, and electrolytes in patients on irbesartan and other agents that affect the RAS.

In most patients no benefit has been associated with using two RAS inhibitors concomitantly. In general, avoid combined use of RAS inhibitors.

Do not coadminister aliskiren with irbesartan in patients with diabetes. Avoid use of aliskiren with irbesartan in patients with renal impairment (GFR <60 mL/min).

Carcinogenesis & Mutagenesis & Impairment Of Fertility

No evidence of carcinogenicity was observed when irbesartan was administered at doses of up to

500/1000 mg/kg/day (males/females, respectively) in rats and 1000 mg/kg/day in mice for up to 2 years. For male and female rats, 500 mg/kg/day provided an average systemic exposure to irbesartan (AUC_{0 to 24 hour}, bound plus unbound) about 3 and 11 times, respectively, the average systemic exposure in humans receiving the maximum recommended dose (MRD) of 300 mg irbesartan/day, whereas 1000 mg/kg/day (administered to females only) provided an average systemic exposure about 21 times that reported for humans at the MRD. For male and female mice, 1000 mg/kg/day provided an exposure to irbesartan about 3 and 5 times, respectively, the human exposure at 300 mg/day.

Irbesartan was not mutagenic in a battery of *in vitro* tests (Ames microbial test, rat hepatocyte DNA repair test, V79 mammalian-cell forward gene-mutation assay). Irbesartan was negative in several tests for induction of chromosomal aberrations (*in vitro*-human lymphocyte assay; *in vivo*-mouse micronucleus study).

Irbesartan had no adverse effects on fertility or mating of male or female rats at oral doses \leq 650 mg/kg/day, the highest dose providing a systemic exposure to irbesartan (AUC_{0 to 24 hour}, bound plus unbound) about 5 times that found in humans receiving the maximum recommended dose of 300 mg/day.

Pregnancy

Teratogenic Effects:

Pregnancy Category D

See **WARNINGS: Fetal Toxicity.**

Nursing Mothers

It is not known whether irbesartan is excreted in human milk, but irbesartan or some metabolite of irbesartan is secreted at low concentration in the milk of lactating rats. Because of the potential for adverse effects on the nursing infant, a decision should be made whether to discontinue nursing or discontinue the drug, taking into account the importance of the drug to the mother.

Pediatric Use

Neonates with a history of *in utero* exposure to irbesartan:

If oliguria or hypotension occurs, direct attention toward support of blood pressure and renal perfusion. Exchange transfusions or dialysis may be required as a means of reversing hypotension and/or substituting for disordered renal function.

Irbesartan, in a study at a dose of up to 4.5 mg/kg/day, once daily, did not appear to lower blood pressure effectively in pediatric patients ages 6 to 16 years.

Irbesartan has not been studied in pediatric patients less than 6 years old.

Geriatric Use

Of 4925 subjects receiving irbesartan in controlled clinical studies of hypertension, 911 (18.5%) were 65 years and over, while 150 (3%) were 75 years and over. No overall differences in effectiveness or safety were observed between these subjects and younger subjects, but greater sensitivity of some older individuals cannot be ruled out. (See **CLINICAL PHARMACOLOGY: Pharmacokinetics, Special Populations, and Clinical Studies.**)

ADVERSE REACTIONS

Hypertension

Irbesartan has been evaluated for safety in more than 4300 patients with hypertension and about 5000 subjects overall. This experience includes 1303 patients treated for over 6 months and 407 patients for 1 year or more. Treatment with irbesartan was well-tolerated, with an incidence of adverse events similar to placebo. These events generally were mild and transient with no relationship to the dose of irbesartan.

In placebo-controlled clinical trials, discontinuation of therapy due to a clinical adverse event was required in 3.3% of patients treated with irbesartan, versus 4.5% of patients given placebo.

In placebo-controlled clinical trials, the following adverse event experiences reported in at least 1% of patients treated with irbesartan (n=1965) and at a higher incidence versus placebo (n=641), excluding those too general to be informative and those not reasonably associated with the use of drug because they were associated with the condition being treated or are very common in the treated population, include: diarrhea (3% vs. 2%), dyspepsia/heartburn (2% vs. 1%), and fatigue (4% vs. 3%).

The following adverse events occurred at an incidence of 1% or greater in patients treated with irbesartan, but were at least as frequent or more frequent in patients receiving placebo: abdominal pain, anxiety/nervousness, chest pain, dizziness, edema, headache, influenza, musculoskeletal pain, pharyngitis, nausea/vomiting, rash, rhinitis, sinus abnormality, tachycardia and urinary tract infection. Irbesartan use was not associated with an increased incidence of dry cough, as is typically associated with ACE inhibitor use. In placebo-controlled studies, the incidence of cough in irbesartan-treated patients was 2.8% versus 2.7% in patients receiving placebo.

The incidence of hypotension or orthostatic hypotension was low in irbesartan-treated patients (0.4%), unrelated to dosage, and similar to the incidence among placebo-treated patients (0.2%). Dizziness, syncope, and vertigo were reported with equal or less frequency in patients receiving irbesartan compared with placebo.

In addition, the following potentially important events occurred in less than 1% of the 1965 patients and at least 5 patients (0.3%) receiving irbesartan in clinical studies, and those less frequent, clinically significant events (listed by body system). It cannot be determined whether these events were causally related to irbesartan:

Body as a Whole: fever, chills, facial edema, upper extremity edema

Cardiovascular: flushing, hypertension, cardiac murmur, myocardial infarction, angina pectoris, arrhythmic/conduction disorder, cardio-respiratory arrest, heart failure, hyper-tensive crisis

Dermatologic: pruritus, dermatitis, ecchymosis, erythema face, urticaria

Endocrine/Metabolic/Electrolyte Imbalances: sexual dysfunction, libido change, gout

Gastrointestinal: constipation, oral lesion, gastroenteritis, flatulence, abdominal distention

Musculoskeletal/Connective Tissue: extremity swelling, muscle cramp, arthritis, muscle ache, musculoskeletal chest pain, joint stiffness, bursitis, muscle weakness

Nervous System: sleep disturbance, numbness, somnolence, emotional disturbance, depression, paresthesia, tremor, transient ischemic attack, cerebrovascular accident

Renal/Genitourinary: abnormal urination, prostate disorder

Respiratory: epistaxis, tracheobronchitis, congestion, pulmonary congestion, dyspnea, wheezing

Special Senses: vision disturbance, hearing abnormality, ear infection, ear pain, conjunctivitis, other eye disturbance, eyelid abnormality, ear abnormality

Nephropathy in Type 2 Diabetic Patients

In clinical studies in patients with hypertension and type 2 diabetic renal disease, the adverse drug experiences were similar to those seen in patients with hypertension with the exception of an increased incidence of orthostatic symptoms (dizziness, orthostatic dizziness, and orthostatic hypotension) observed in IDNT (proteinuria \geq 900 mg/day, and serum creatinine ranging from 1 to 3 mg/dL). In this trial, orthostatic symptoms occurred more frequently in the irbesartan group (dizziness 10.2%, orthostatic dizziness 5.4%, orthostatic hypotension 5.4%) than in the placebo group (dizziness 6%, orthostatic dizziness 2.7%, orthostatic hypotension 3.2%).

Post-Marketing Experience

The following adverse reactions have been identified during post-approval use of irbesartan. Because these reactions are reported voluntarily from a population of uncertain size, it is not always possible to estimate reliably their frequency or to establish a causal relationship to drug exposure. Decisions to include these reactions in labeling are typically based on one or more of the following factors: (1) seriousness of the reaction, (2) frequency of reporting, or (3) strength of causal connection to irbesartan.

The following have been reported: urticaria; angioedema (involving swelling of the face, lips, pharynx, and/or tongue); increased liver function tests; jaundice; hepatitis; hyperkalemia, and thrombocytopenia. Impaired renal function, including cases of renal failure, has been reported.

Cases of increased CPK and rhabdomyolysis have been reported in patients receiving angiotensin II receptor blockers.

Laboratory Test Findings

Hypertension

In controlled clinical trials, clinically important differences in laboratory tests were rarely associated with administration of irbesartan.

Creatinine, Blood Urea Nitrogen: Minor increases in blood urea nitrogen (BUN) or serum creatinine were observed in less than 0.7% of patients with essential hypertension treated with irbesartan alone versus 0.9% on placebo. (See **PRECAUTIONS: Impaired Renal Function.**)

Hematologic: Mean decreases in hemoglobin of 0.2 g/dL were observed in 0.2% of patients receiving irbesartan compared to 0.3% of placebo-treated patients. Neutropenia (<1000 cells/mm³) occurred at similar frequencies among patients receiving irbesartan (0.3%) and placebo-treated patients (0.5%).

Nephropathy in Type 2 Diabetic Patients

Hyperkalemia: In IDNT (proteinuria \geq 900 mg/day, and serum creatinine ranging from 1 to 3 mg/dL), the percent of patients with hyperkalemia (>6 mEq/L) was 18.6% in the irbesartan group versus 6% in the placebo group. Discontinuations due to hyperkalemia in the irbesartan group were 2.1% versus 0.4% in the placebo group.

OVERDOSAGE

No data are available in regard to overdosage in humans. However, daily doses of 900 mg for 8 weeks were well-tolerated. The most likely manifestations of overdosage are expected to be hypotension and tachycardia; bradycardia might also occur from overdose. Irbesartan is not removed by hemodialysis. To obtain up-to-date information about the treatment of overdosage, a good resource is a certified regional Poison Control Center. Telephone numbers of certified Poison Control Centers are listed in the *Physicians' Desk Reference* (PDR). In managing overdose, consider the possibilities of multiple-drug interactions, drug-drug interactions, and unusual drug kinetics in the patient.

Laboratory determinations of serum levels of irbesartan are not widely available, and such determinations have, in any event, no known established role in the management of irbesartan overdose. Acute oral toxicity studies with irbesartan in mice and rats indicated acute lethal doses were in excess of 2000 mg/kg, about 25- and 50-fold the MRHD (300 mg) on a mg/m² basis, respectively.

DOSAGE & ADMINISTRATION

Irbesartan tablet USP may be administered with other antihypertensive agents and with or without food.

Hypertension

The recommended initial dose of irbesartan tablet USP is 150 mg once daily. Patients requiring further reduction in blood pressure should be titrated to 300 mg once daily.

A low dose of a diuretic may be added, if blood pressure is not controlled by irbesartan alone.

Hydrochlorothiazide has been shown to have an additive effect (see **CLINICAL PHARMACOLOGY: Clinical Studies**). Patients not adequately treated by the maximum dose of 300 mg once daily are unlikely to derive additional benefit from a higher dose or twice-daily dosing.

No dosage adjustment is necessary in elderly patients, or in patients with hepatic impairment or mild to severe renal impairment.

Nephropathy in Type 2 Diabetic Patients

The recommended target maintenance dose is 300 mg once daily. There are no data on the clinical effects of lower doses of irbesartan on diabetic nephropathy (see **CLINICAL PHARMACOLOGY: Clinical Studies**).

Volume- and Salt-Depleted Patients

A lower initial dose of Irbesartan tablet USP (75 mg) is recommended in patients with depletion of intravascular volume or salt (eg, patients treated vigorously with diuretics or on hemodialysis) (see **WARNINGS: Hypotension in Volume- or Salt-Depleted Patients**).

HOW SUPPLIED

Irbesartan Tablets USP, 75 mg are white, capsule shaped, biconvex tablets debossed with '158' on one side and 'H' on the other side. They are supplied in

Bottles of 30 tablets (NDC 31722-729-30)

Bottles of 90 tablets (NDC 31722-729-90)

Bottles of 500 tablets (NDC 31722-729-05)

Blister Pack of 12x10's (Alu-PVC) (NDC 31722-729-31)

Irbesartan Tablets USP, 150 mg are white, capsule shaped, biconvex tablets debossed with '159' on one side and 'H' on the other side. They are supplied in

Bottles of 30 tablets (NDC 31722-730-30)

Bottles of 90 tablets (NDC 31722-730-90)

Bottles of 500 tablets (NDC 31722-730-05)

Blister Pack of 12x10's (Alu-PVC) (NDC 31722-730-31) Irbesartan Tablets USP, 300 mg are white, capsule shaped, biconvex tablets debossed with '160' on one side and 'H' on the other side. They are supplied in

Bottles of 30 tablets (NDC 31722-731-30)

Bottles of 90 tablets (NDC 31722-731-90)

Bottles of 500 tablets (NDC 31722-731-05)

Blister Pack of 12x10's (Alu-PVC) (NDC 31722-731-31)

Storage


Store at 20° to 25° C (68° to 77° F) [see USP Controlled Room Temperature]

Manufactured for:



Camber Pharmaceuticals, inc.
Piscataway, NJ 08854

By:

Manufactured by:
 **HETERO™**
HETERO LABS LIMITED 2027292
Unit V, Polepally, Jadcherla
Mahaboob Nagar-509 301, India.

Revised: December 2014

SPL PATIENT PACKAGE INSERT

DRUG: Irbesartan

GENERIC: Irbesartan

DOSAGE: TABLET

ADMINISTRATION: ORAL

NDC: 70518-1798-0

COLOR: white

SHAPE: CAPSULE

SCORE: No score

SIZE: 11 mm

IMPRINT: 159;H

PACKAGING: 90 in 1 BOTTLE, PLASTIC

ACTIVE INGREDIENT(S):

- IRBESARTAN 150mg in 1

INACTIVE INGREDIENT(S):

- CALCIUM STEARATE
- CELLULOSE, MICROCRYSTALLINE
- COLLOIDAL SILICON DIOXIDE
- CARBOXYMETHYLCELLULOSE CALCIUM
- POVIDONE K30

Irbesartan

150 mg Tablet

QTY: 90

ID #: 159;H

NDC #: 70518-1798-00

LOT #:

MFG: Camber Pharma, Inc, Piscataway, NJ 08854

Expires:

Shape: Capsule

Ref #: 31722-0730-30

RX ONLY

Directions For Use: See Package Insert

Store at 20-25°C (68-77°F); excursions permitted to 15-30°C (59-86°F) [See USP]

Repackaged by:

RemedyRepack Inc., Indiana, PA 15701, 1-724-465-8762



IRBESARTAN

irbesartan tablet

Product Information

| | | | |
|-------------------------|-------------------------|--------------------|-------------------------------|
| Product Type | HUMAN PRESCRIPTION DRUG | Item Code (Source) | NDC:70518-1798(NDC:31722-730) |
| Route of Administration | ORAL | | |

Active Ingredient/Active Moiety

| Ingredient Name | Basis of Strength | Strength |
|--|-------------------|----------|
| IRBESARTAN (UNII: J0E2756Z7N) (IRBESARTAN - UNII:J0E2756Z7N) | IRBESARTAN | 150 mg |

Inactive Ingredients

| Ingredient Name | Strength |
|---|----------|
| CALCIUM STEARATE (UNII: 776XM7047L) | |
| CARBOXYMETHYLCELLULOSE CALCIUM (UNII: UTY7PDF93L) | |
| SILICON DIOXIDE (UNII: ETJ7Z6XBU4) | |
| CELLULOSE, MICROCRYSTALLINE (UNII: OP1R32D61U) | |
| POVIDONE K30 (UNII: U725QWY32X) | |

Product Characteristics

| | | | |
|-----------------|---------|---------------------|----------|
| Color | white | Score | no score |
| Shape | CAPSULE | Size | 11mm |
| Flavor | | Imprint Code | 159;H |
| Contains | | | |

Packaging

| # | Item Code | Package Description | Marketing Start Date | Marketing End Date |
|---|------------------|--|----------------------|--------------------|
| 1 | NDC:70518-1798-0 | 90 in 1 BOTTLE, PLASTIC; Type 0: Not a Combination Product | 01/15/2019 | |

Marketing Information

| Marketing Category | Application Number or Monograph Citation | Marketing Start Date | Marketing End Date |
|--------------------|--|----------------------|--------------------|
| ANDA | ANDA202910 | 01/15/2019 | |

Labeler - REMEDYREPACK INC. (829572556)

Revised: 1/2019

REMEDYREPACK INC.