

NABUMETONE- nabumetone tablet, film coated
Blenheim Pharmacal, Inc.

Nabumetone Tablets USP

Rx Only

Cardiovascular Risk

- NSAIDs¹ may cause an increased risk of serious cardiovascular thrombotic events, myocardial infarction, and stroke, which can be fatal. This risk may increase with duration of use. Patients with cardiovascular disease or risk factors for cardiovascular disease may be at a greater risk (See **WARNINGS**).
- Nabumetone tablets are contraindicated for the treatment of peri-operative pain in the setting of coronary artery bypass graft (CABG) surgery (see **WARNINGS**).

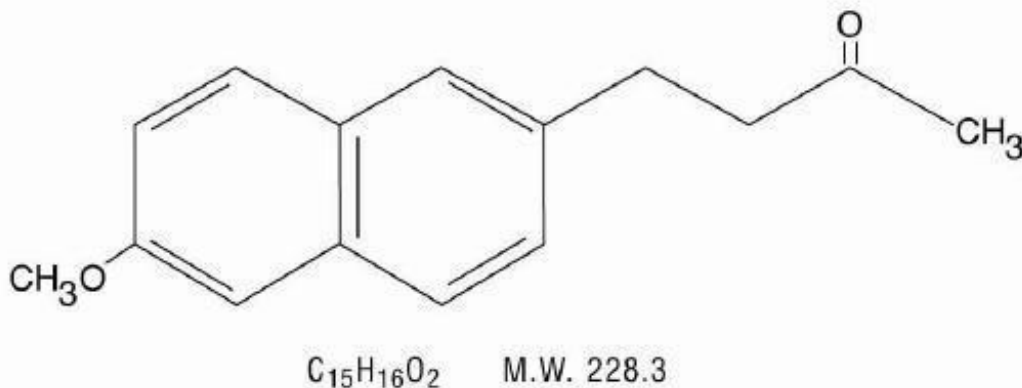
Gastrointestinal Risk

- NSAIDs cause an increased risk of serious gastrointestinal adverse events including bleeding, ulceration, and perforation of the stomach or intestines, which can be fatal. These events can occur at any time during use and without warning symptoms. Elderly patients are at greater risk for serious gastrointestinal events (see **WARNINGS**).

¹ Through out this package insert, the term NSAID refers to a non-aspirin non-steroidal anti-inflammatory drug.

DESCRIPTION

Nabumetone is a naphthylalkanone designated chemically as 4-(6-methoxy-2-naphthalenyl)-2-butanone. It has the following structure:



Nabumetone is a white to off-white crystalline substance. It is nonacidic and practically insoluble in water, but soluble in alcohol and most organic solvents. It has an n-octanol:phosphate buffer partition coefficient of 2400 at pH 7.4.

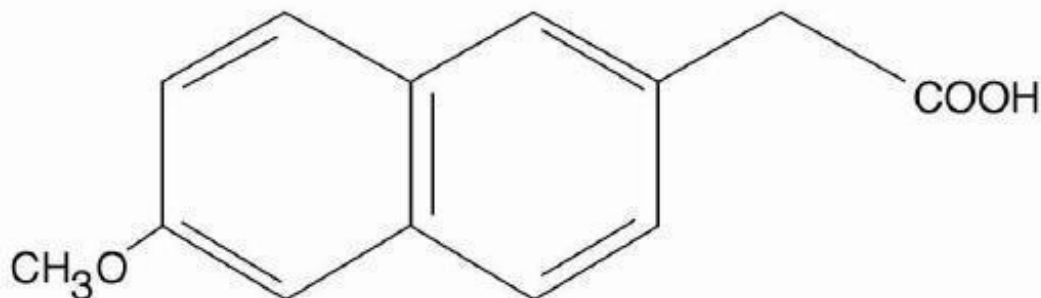
Each tablet, for oral administration contains either 500 mg or 750 mg of nabumetone. In addition, each tablet contains the following inactive ingredients: microcrystalline cellulose, sodium starch glycolate, hydroxyl propyl methyl cellulose, sodium lauryl sulphate, colloidal silicon dioxide and magnesium stearate. The 500 mg tablets also contain opadry white (Titanium dioxide, Hypromellose 3cP, Hypromellose 6cP, Macrogol and Polysorbate 80) and the 750 mg tablets contain opadry beige

(Hypromellose 6cP, titanium dioxide, iron oxide yellow, iron oxide red and Macrogol).

CLINICAL PHARMACOLOGY

Nabumetone is a non-steroidal anti-inflammatory drug (NSAID) that exhibits anti-inflammatory, analgesic, and antipyretic properties in pharmacologic studies. As with other non-steroidal anti-inflammatory agents, its mode of action is not known; however, the ability to inhibit prostaglandin synthesis may be involved in the anti-inflammatory effect.

The parent compound is a prodrug, which undergoes hepatic biotransformation to the active component, 6-methoxy-2-naphthylacetic acid (6MNA) that is a potent inhibitor of prostaglandin synthesis.



6-methoxy-2-naphthylacetic acid (6MNA)

It is acidic and has an n-octanol:phosphate buffer partition coefficient of 0.5 at pH 7.4.

Pharmacokinetics:

After oral administration, approximately 80% of a radiolabelled dose of nabumetone is found in the urine, indicating that nabumetone is well absorbed from the gastrointestinal tract. Nabumetone itself is not detected in the plasma because, after absorption, it undergoes rapid biotransformation to the principal active metabolite, 6-methoxy-2-naphthylacetic acid (6MNA). Approximately 35% of a 1,000-mg oral dose of nabumetone is converted to 6MNA and 50% is converted into unidentified metabolites which are subsequently excreted in the urine. Following oral administration of nabumetone, 6MNA exhibits pharmacokinetic characteristics that generally follow a one-compartment model with first order input and first order elimination.

6MNA is more than 99% bound to plasma proteins. The free fraction is dependent on total concentration of 6MNA and is proportional to dose over the range of 1,000 mg to 2,000 mg. It is 0.2% to 0.3% at concentrations typically achieved following administration of 1,000 mg of nabumetone and is approximately 0.6% to 0.8% of the total concentrations at steady state following daily administration of 2,000 mg.

Steady-state plasma concentrations of 6MNA are slightly lower than predicted from single dose data. This may result from higher fraction of unbound 6MNA which undergoes greater hepatic clearance.

Coadministration of food increases the rate of absorption and subsequent appearance of 6MNA in the plasma but does not affect the extent of conversion of nabumetone into 6MNA. Peak plasma concentrations of 6MNA are increased by approximately one third.

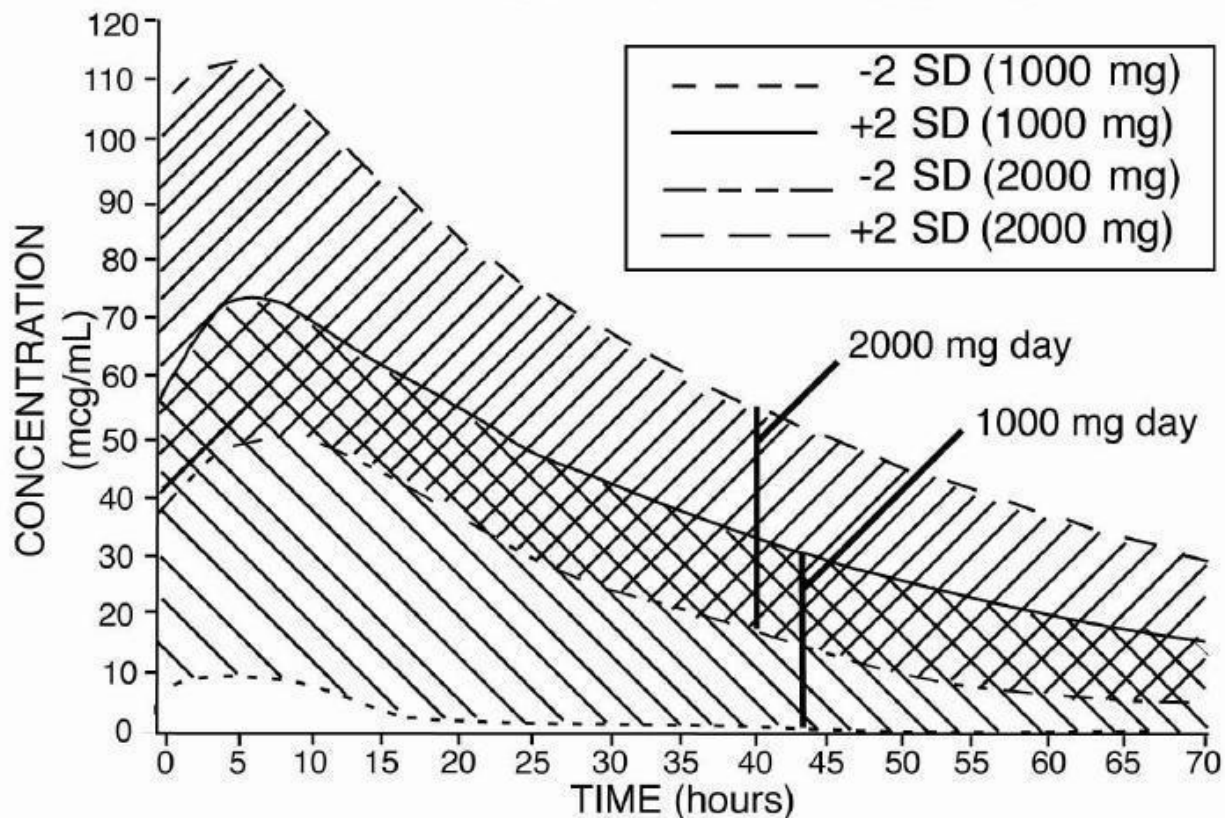
Coadministration with an aluminum-containing antacid had no significant effect on the bioavailability of 6MNA.

Abbreviation (Units)	Young Adults	Young Adults	Elderly
	Mean \pm SD 1,000 mg n = 31	Mean \pm SD 2,000 mg n = 12	Mean \pm SD 1,000 mg n = 27
T _{max} (hr)	3.0 (1.0 to 12.0)	2.5 (1.0 to 8.0)	4.0 (1.0 to 10.0)
t _{1/2} (hr)	22.5 \pm 3.7	26.2 \pm 3.7	29.8 \pm 8.1
CL _{ss} /F (mL/min)	26.1 \pm 17.3	21.0 \pm 4.0	18.6 \pm 13.4
Vd _{ss} /F (L)	55.4 \pm 26.4	53.4 \pm 11.3	50.2 \pm 25.3

Table 1. Mean Pharmacokinetic Parameters of Nabumetone Active Metabolite (6MNA) at Steady State Following Oral Administration of 1,000-mg or 2,000-mg Doses of Nabumetone

The simulated curves in the graph below illustrate the range of active metabolite plasma concentrations that would be expected from 95% of patients following 1,000-mg to 2,000-mg doses to steady state. The cross-hatched area represents the expected overlap in plasma concentrations due to intersubject variation following oral administration of 1,000 mg to 2,000 mg of nabumetone.

**Nabumetone Active Metabolite (6MNA) Plasma Concentrations
at Steady State Following Once-Daily Dosing of Nabumetone
1000 mg (n=31) 2000 mg (n=12)**



6MNA undergoes biotransformation in the liver, producing inactive metabolites that are eliminated as both free metabolites and conjugates. None of the known metabolites of 6MNA has been detected in plasma. Preliminary *in vivo* and *in vitro* studies suggest that unlike other NSAIDs, there is no evidence of enterohepatic recirculation of the active metabolite. Approximately 75% of a radiolabelled dose was

recovered in urine in 48 hours. Approximately 80% was recovered in 168 hours. A further 9% appeared in the feces. In the first 48 hours, metabolites consisted of:

–nabumetone, unchanged	not detectable
–6-methoxy-2-naphthylacetic acid (6MNA), unchanged	<1%
–6MNA, conjugated	11%
–6-hydroxy-2-naphthylacetic acid (6HNA), unchanged	5%
–6HNA, conjugated	7%
–4-(6-hydroxy-2-naphthyl)-butan-2-ol, Conjugated	9%
– <i>O</i> -desmethyl-nabumetone, conjugated	7%
–unidentified minor metabolites	<u>34%</u>
Total % Dose:	73%

Following oral administration of dosages of 1,000 mg to 2,000 mg to steady state, the mean plasma clearance of 6MNA is 20 to 30 mL/min and the elimination half-life is approximately 24 hours.

Gastrointestinal:

Nabumetone was compared to aspirin in inducing gastrointestinal blood loss. Food intake was not monitored. Studies utilizing 51 Cr-tagged red blood cells in healthy males showed no difference in fecal blood loss after 3 or 4 weeks' administration of 1,000 mg or 2,000 mg of nabumetone daily when compared to either placebo-treated or nontreated subjects. In contrast, aspirin 3,600 mg daily produced an increase in fecal blood loss when compared to subjects who received nabumetone, placebo, or no treatment. The clinical relevance of the data is unknown.

The following endoscopy trials entered patients who had been previously treated with NSAIDs. These patients had varying baseline scores and different courses of treatment. The trials were not designed to correlate symptoms and endoscopy scores. The clinical relevance of these endoscopy trials, i.e., either G.I. symptoms or serious G.I. events, is not known.

Ten endoscopy studies were conducted in 488 patients who had baseline and post-treatment endoscopy. In 5 clinical trials that compared a total of 194 patients on 1,000 mg of nabumetone daily or naproxen 250 mg or 500 mg twice daily for 3 to 12 weeks, treatment with nabumetone resulted in fewer patients with endoscopically detected lesions (>3 mm). In 2 trials a total of 101 patients administered 1,000 mg or 2,000 mg of nabumetone daily or piroxicam 10 mg to 20 mg for 7 to 10 days, there were fewer patients treated with nabumetone with endoscopically detected lesions. In 3 trials of a total of 47 patients on 1,000 mg of nabumetone daily or indomethacin 100 mg to 150 mg daily for 3 to 4 weeks, the endoscopy scores were higher with indomethacin. Another 12-week trial in a total of 171 patients compared the results of treatment with 1,000 mg of nabumetone daily to ibuprofen 2,400 mg/day and ibuprofen 2,400 mg/day plus misoprostol 800 mcg/day. The results showed that patients treated with nabumetone had a lower number of endoscopically detected lesions (>5 mm) than patients treated with ibuprofen alone but comparable to the combination of ibuprofen plus misoprostol. The results did not correlate with abdominal pain.

Other:

In 1-week, repeat-dose studies in healthy volunteers, 1,000 mg of nabumetone daily had little effect on collagen-induced platelet aggregation and no effect on bleeding time. In comparison, naproxen 500 mg daily suppressed collagen-induced platelet aggregation and significantly increased bleeding time.

Special Studies :**CLINICAL TRIALS****Osteoarthritis :**

The use of nabumetone in relieving the signs and symptoms of osteoarthritis (OA) was assessed in double-blind, controlled trials in which 1,047 patients were treated for 6 weeks to 6 months. In these trials, nabumetone in a dose of 1,000 mg/day administered at night was comparable to naproxen 500 mg/day and to aspirin 3,600 mg/day.

Rheumatoid Arthritis :

The use of nabumetone in relieving the signs and symptoms of rheumatoid arthritis (RA) was assessed in double-blind, randomized, controlled trials in which 770 patients were treated for 3 weeks to 6 months. Nabumetone, in a dose of 1,000 mg/day administered at night, was comparable to naproxen 500 mg/day and to aspirin 3,600 mg/day.

In controlled clinical trials of rheumatoid arthritis patients, nabumetone has been used in combination with gold, d-penicillamine, and corticosteroids.

Patient Exposure in Clinical Trials of Osteoarthritis and Rheumatoid Arthritis :

In clinical trials with osteoarthritis and rheumatoid arthritis patients, most patients responded to nabumetone in doses of 1,000 mg/day administered nightly; total daily dosages up to 2,000 mg were used. In open-labelled studies, 1,490 patients were permitted dosage increases and were followed for approximately 1 year (mode). Twenty percent of patients (n = 294) were withdrawn for lack of effectiveness during the first year of these open-labelled studies. The following table provides patient exposure to doses used in the US clinical trials:

Dose of Nabumetone	Number of patients		Mean/Mode Duration of treatment (yr)	
	OA	RA	OA	RA
500 mg	17	6	0.4/-	0.2/-
1,000 mg	917	701	1.2/1	1.4/1
1,500 mg	645	224	2.3/1	1.7/1
2,000 mg	15	100	0.6/1	1.3/1

Table 2. Clinical Double-Blinded and Open-Labelled Trials of nabumetone in Osteoarthritis and Rheumatoid Arthritis

As with other NSAIDs, the lowest dose should be sought for each patient. Patients weighing under 50 kg may be less likely to require dosages beyond 1,000 mg; therefore, after observing the response to initial therapy, the dose should be adjusted to meet individual patients' requirements.

INDICATIONS AND USAGE

Carefully consider the potential benefits and risks of nabumetone tablets and other treatment options before deciding to use nabumetone tablets. Use the lowest effective dose for the shortest duration consistent with individual patient treatment goals (see **WARNINGS**).

Nabumetone tablets are indicated for relief of signs and symptoms of osteoarthritis and rheumatoid arthritis.

CONTRAINDICATIONS

Nabumetone tablets are contraindicated in patients with known hypersensitivity to nabumetone or its excipients.

Nabumetone tablets should not be given to patients who have experienced asthma, urticaria, or allergic-type reactions after taking aspirin or other NSAIDs. Severe, rarely fatal, anaphylactic-like reactions to NSAIDs have been reported in such patients (see **WARNINGS: Anaphylactoid Reactions** , and **PRECAUTIONS: General: Pre-existing Asthma**.)

Nabumetone tablets are contraindicated for the treatment of peri-operative pain in the setting of coronary artery bypass graft (CABG) surgery (see **WARNINGS**).

WARNINGS

CARDIOVASCULAR EFFECTS

Cardiovascular Thrombotic Events:

Clinical trials of several COX-2 selective and nonselective NSAIDs of up to 3 years duration have shown an increased risk of serious cardiovascular (CV) thrombotic events, myocardial infarction, and stroke, which can be fatal. All NSAIDs, both COX-2 selective and nonselective, may have a similar risk. Patients with known CV disease or risk factors for CV disease may be at greater risk. To minimize the potential risk for an adverse CV event in patients treated with an NSAID, the lowest effective dose should be used for the shortest duration possible. Physicians and patients should remain alert for the development of such events, even in the absence of previous CV symptoms. Patients should be informed about the signs and/or symptoms of serious CV events and the steps to take if they occur.

There is no consistent evidence that concurrent use of aspirin mitigates the increased risk of serious CV thrombotic events associated with NSAID use. The concurrent use of aspirin and an NSAID does increase the risk of serious GI events (see **WARNINGS, Gastrointestinal Effects-Risk of Ulceration, Bleeding, and Perforation**).

Two large, controlled, clinical trials of a COX-2 selective NSAID for the treatment of pain in the first 10 to 14 days following CABG surgery found an increased incidence of myocardial infarction and stroke (see **CONTRAINDICATIONS**).

Hypertension:

NSAIDs, including nabumetone tablets, can lead to onset of new hypertension or worsening of preexisting hypertension, either of which may contribute to the increased incidence of CV events. Patients taking thiazides or loop diuretics may have impaired response to these therapies when taking NSAIDs. NSAIDs, including nabumetone tablets, should be used with caution in patients with hypertension. Blood pressure (BP) should be monitored closely during the initiation of NSAID treatment and throughout the course of therapy.

Congestive Heart Failure and Edema:

Fluid retention and edema have been observed in some patients taking NSAIDs. Nabumetone tablets should be used with caution in patients with fluid retention or heart failure.

Gastrointestinal Effects, Risk of Ulceration, Bleeding, and Perforation:

NSAIDs, including nabumetone tablets, can cause serious gastrointestinal (GI) adverse events including inflammation, bleeding, ulceration, and perforation of the stomach, small intestine, or large intestine, which can be fatal. These serious adverse events can occur at any time, with or without warning symptoms, in patients treated with NSAIDs. Only 1 in 5 patients, who develop a serious upper GI adverse event on NSAID therapy, is symptomatic. Upper GI ulcers, gross bleeding, or perforation caused by NSAIDs occur in approximately 1% of patients treated for 3 to 6 months, and in about 2 to 4% of patients treated for 1 year. These trends continue with longer duration of use, increasing the likelihood of developing a serious GI event at some time during the course of therapy. However, even short-term therapy is not without risk.

In controlled clinical trials involving 1,677 patients treated with nabumetone (1,140 followed for 1 year and 927 for 2 years), the cumulative incidence of peptic ulcers was 0.3% (95% CI; 0%, 0.6%) at 3 to 6 months, 0.5% (95% CI; 0.1%, 0.9%) at 1 year and 0.8% (95% CI; 0.3%, 1.3%) at 2 years. In patients with active peptic ulcer, physicians must weigh the benefits of therapy with nabumetone against possible hazards, institute an appropriate ulcer treatment regimen and monitor the patients' progress carefully.

NSAIDs should be prescribed with extreme caution in those with a prior history of ulcer disease or gastrointestinal bleeding. Patients with a *prior history of peptic ulcer disease and/or gastrointestinal bleeding* who use NSAIDs have a greater than 10-fold increased risk for developing a GI bleed compared to patients with neither of these risk factors. Other factors that increase the risk for GI bleeding in patients treated with NSAIDs include concomitant use of oral corticosteroids or anticoagulants, longer duration of NSAID therapy, smoking, use of alcohol, older age, and poor general health status. Most spontaneous reports of fatal GI events are in elderly or debilitated patients and therefore, special care should be taken in treating this population.

To minimize the potential risk for an adverse GI event in patients treated with an NSAID, the lowest effective dose should be used for the shortest possible duration. Patients and physicians should remain alert for signs and symptoms of GI ulceration and bleeding during NSAID therapy and promptly initiate additional evaluation and treatment if a serious GI adverse event is suspected. This should include discontinuation of the NSAID until a serious GI adverse event is ruled out. For high risk patients, alternate therapies that do not involve NSAIDs should be considered.

Renal Effects:

Long-term administration of NSAIDs has resulted in renal papillary necrosis and other renal injury. Renal toxicity has also been seen in patients in whom renal prostaglandins have a compensatory role in the maintenance of renal perfusion. In these patients, administration of an NSAID results in a dose-dependent decrease in prostaglandin synthesis and, secondarily, in a reduction of renal blood flow, which may precipitate overt renal decompensation. Patients at greatest risk of this reaction are those with impaired renal function, heart failure, liver dysfunction, those taking diuretics, and the elderly. Discontinuation of NSAID therapy is typically followed by recovery to the pretreatment state.

Advanced Renal Disease:

No information is available from controlled clinical studies regarding the use of nabumetone tablets in patients with advanced renal disease. Therefore, treatment with nabumetone tablets is not recommended in these patients with advanced renal disease. If nabumetone tablets therapy must be initiated, close monitoring of the patient's renal function is advisable.

Because nabumetone undergoes extensive hepatic metabolism, no adjustment of the dosage of nabumetone is generally necessary in patients with mild renal insufficiency; however, as with all NSAIDs, patients with impaired renal function should be monitored more closely than patients with normal renal function (see **CLINICAL PHARMACOLOGY: Pharmacokinetics: Renal Insufficiency**). In subjects with moderate renal impairment (creatinine clearance 30 to 49 mL/min) there is a 50% increase in unbound plasma 6MNA and dose adjustment may be warranted. The oxidized and

conjugated metabolites of 6MNA are eliminated primarily by the kidneys.

Anaphylactoid Reactions :

As with other NSAIDs, anaphylactoid reactions may occur in patients without known prior exposure to nabumetone tablets. Nabumetone tablets should not be given to patients with the aspirin triad. This symptom complex typically occurs in asthmatic patients who experience rhinitis with or without nasal polyps, or who exhibit severe, potentially fatal bronchospasm after taking aspirin or other NSAIDs (see **CONTRAINDICATIONS** and **PRECAUTIONS: General: Pre-existing Asthma:**). Emergency help should be sought in cases where an anaphylactoid reaction occurs.

Skin Reactions :

NSAIDs, including nabumetone tablets, can cause serious skin adverse events such as exfoliative dermatitis, Stevens-Johnson Syndrome (SJS), and toxic epidermal necrolysis (TEN), which can be fatal. These serious events may occur without warning. Patients should be informed about the signs and symptoms of serious skin manifestations and use of the drug should be discontinued at the first appearance of skin rash or any other sign of hypersensitivity.

Pregnancy:

In late pregnancy, as with other NSAIDs, nabumetone tablets should be avoided because it may cause premature closure of the ductus arteriosus.

PRECAUTIONS

General

Nabumetone tablets cannot be expected to substitute for corticosteroids or to treat corticosteroid insufficiency. Abrupt discontinuation of corticosteroids may lead to disease exacerbation. Patients on prolonged corticosteroid therapy should have their therapy tapered slowly if a decision is made to discontinue corticosteroids.

The pharmacological activity of nabumetone tablets in reducing fever and inflammation may diminish the utility of these diagnostic signs in detecting complications of presumed noninfectious, painful conditions.

Hepatic Effects :

Borderline elevations of 1 or more liver function tests may occur in up to 15% of patients taking NSAIDs including nabumetone tablets. These laboratory abnormalities may progress, may remain unchanged, or may be transient with continuing therapy. Notable elevations of ALT or AST (approximately 3 or more times the upper limit of normal) have been reported in approximately 1% of patients in clinical trials with NSAIDs. In addition, rare cases of severe hepatic reactions, including jaundice and fatal fulminant hepatitis, liver necrosis and hepatic failure, some of them with fatal outcomes have been reported. A patient with symptoms and/or signs suggesting liver dysfunction, or in whom an abnormal liver test has occurred, should be evaluated for evidence of the development of a more severe hepatic reaction while on therapy with nabumetone tablets. If clinical signs and symptoms consistent with liver disease develop, or if systemic manifestations occur (e.g., eosinophilia, rash, etc.), nabumetone tablets should be discontinued.

Hematological Effects:

Anemia is sometimes seen in patients receiving NSAIDs, including nabumetone tablets. This may be due to fluid retention, occult or gross GI blood loss, or an incompletely described effect upon erythropoiesis. Patients on long-term treatment with NSAIDs, including nabumetone tablets, should have their hemoglobin or hematocrit checked if they exhibit any signs or symptoms of anemia.

NSAIDs inhibit platelet aggregation and have been shown to prolong bleeding time in some patients. Unlike aspirin, their effect on platelet function is quantitatively less, of shorter duration, and reversible. Patients receiving nabumetone tablets who may be adversely affected by alterations in platelet function, such as those with coagulation disorders or patients receiving anticoagulants, should be carefully monitored (see **CLINICAL PHARMACOLOGY: Special Special Studies: Other:**).

Preexisting Asthma:

Patients with asthma may have aspirin-sensitive asthma. The use of aspirin in patients with aspirin-sensitive asthma has been associated with severe bronchospasm which can be fatal. Since cross reactivity, including bronchospasm, between aspirin and other non-steroidal anti-inflammatory drugs has been reported in such aspirin sensitive patients, nabumetone tablets should not be administered to patients with this form of aspirin sensitivity and should be used with caution in patients with preexisting asthma.

Photosensitivity:

Based on ultraviolet (U.V.) light photosensitivity testing, nabumetone may be associated with more reactions to sun exposure than might be expected based on skin tanning types.

Information for patients

Patients should be informed of the following information before initiating therapy with an NSAID and periodically during the course of ongoing therapy. Patients should also be encouraged to read the NSAID Medication Guide that accompanies each prescription dispensed.

- Nabumetone tablets, like other NSAIDs, may cause serious CV side effects, such as MI or stroke, which may result in hospitalization and even death. Although serious CV events can occur without warning symptoms, patients should be alert for the signs and symptoms of chest pain, shortness of breath, weakness, slurring of speech, and should ask for medical advice when observing any indicative signs or symptoms. Patients should be apprised of the importance of this follow-up (see **WARNINGS: CARDIOVASCULAR EFFECTS**).
- Nabumetone tablets, like other NSAIDs, can cause GI discomfort and, rarely, serious GI side effects, such as ulcers and bleeding, which may result in hospitalization and even death. Although serious GI tract ulcerations and bleeding can occur without warning symptoms, patients should be alert for the signs and symptoms of ulcerations and bleeding, and should ask for medical advice when observing any indicative sign or symptoms including epigastric pain, dyspepsia, melena, and hematemesis. Patients should be apprised of the importance of this follow-up (see **WARNINGS: Gastrointestinal Effects, Risk of Ulceration, Bleeding, and Perforation:**).
- Nabumetone tablets, like other NSAIDs, can cause serious skin side effects such as exfoliative dermatitis, SJS, and TEN, which may result in hospitalizations and even death. Although serious skin reactions may occur without warning, patients should be alert for the signs and symptoms of skin rash and blisters, fever, or other signs of hypersensitivity such as itching, and should ask for medical advice when observing any indicative signs or symptoms. Patient should be advised to stop the drug immediately if they develop any type of rash and contact their physicians as soon as possible.
- Patients should promptly report signs or symptoms of unexplained weight gain or edema to their physicians.
- Patients should be informed of the warning signs and symptoms of hepatotoxicity (e.g., nausea, fatigue, lethargy, pruritus, jaundice, right upper quadrant tenderness, and "flu-like" symptoms). If these occur, patients should be instructed to stop therapy and seek immediate medical therapy.
- Patients should be informed of the signs of an anaphylactoid reaction (e.g. difficulty breathing, swelling of the face or throat). If these occur, patients should be instructed to seek immediate emergency help (see **WARNINGS**).
- In late pregnancy, as with other NSAIDs, nabumetone tablets should be avoided because they may cause premature closure of the ductus arteriosus.

Laboratory tests

Because serious G.I. tract ulceration and bleeding can occur without warning symptoms, physicians should monitor for signs and symptoms of GI bleeding. Patients on long-term treatment with NSAIDs, should have their CBC and a chemistry profile checked periodically. If clinical signs and symptoms consistent with liver or renal disease develop, systemic manifestations occur (e.g., eosinophilia, rash, etc.) or if abnormal liver tests persist or worsen, nabumetone tablets should be discontinued.

Drug interactions

ACE-inhibitors :

Reports suggest that NSAIDs may diminish the antihypertensive effect of ACE-inhibitors. This interaction should be given consideration in patients taking NSAIDs concomitantly with ACE-inhibitors.

Aspirin:

When nabumetone tablets are administered with aspirin, its protein binding is reduced, although the clearance of free nabumetone is not altered. The clinical significance of this interaction is not known; however, as with other NSAIDs, concomitant administration of nabumetone tablets and aspirin is not generally recommended because of the potential of increased adverse effects.

Diuretics :

Clinical studies, as well as post marketing observations, have shown that nabumetone can reduce the natriuretic effect of furosemide and thiazides in some patients. This response has been attributed to inhibition of renal prostaglandin synthesis. During concomitant therapy with NSAIDs, the patient should be observed closely for signs of renal failure (see **WARNINGS: Renal Effects :**), as well as to assure diuretic efficacy.

Lithium:

NSAIDs have produced an elevation of plasma lithium levels and a reduction in renal lithium clearance. The mean minimum lithium concentration increased 15% and the renal clearance was decreased by approximately 20%. These effects have been attributed to inhibition of renal prostaglandin synthesis by the NSAID. Thus, when NSAIDs and lithium are administered concurrently, subjects should be observed carefully for signs of lithium toxicity.

Methotrexate:

NSAIDs have been reported to competitively inhibit methotrexate accumulation in rabbit kidney slices. This may indicate that they could enhance the toxicity of methotrexate. Caution should be used when NSAIDs are administered concomitantly with methotrexate.

Warfarin:

The effects of warfarin and NSAIDs on GI bleeding are synergistic, such that users of both drugs together have a risk of serious GI bleeding higher than users of either drug alone.

In vitro studies have shown that, because of its affinity for protein, 6MNA may displace other protein-bound drugs from their binding site. Caution should be exercised when administering nabumetone with warfarin since interactions have been seen with other NSAIDs.

Concomitant administration of an aluminum-containing antacid had no significant effect on the bioavailability of 6MNA. When administered with food or milk, there is more rapid absorption; however, the total amount of 6MNA in the plasma is unchanged (see **CLINICAL PHARMACOLOGY: Pharmacokinetics :**).

Carcinogenesis, mutagenesis, impairment of fertility

In 2-year studies conducted in mice and rats, nabumetone had no statistically significant tumorigenic effect. Nabumetone did not show mutagenic potential in the Ames test and mouse micronucleus test *in vivo*; however, nabumetone and 6MNA-treated lymphocytes in culture showed chromosomal aberrations at 80 mcg/mL and higher concentrations (equal to the average human exposure to nabumetone at the maximum recommended dose).

Nabumetone did not impair fertility of male or female rats treated orally at doses of 320 mg/kg/day (1,888 mg/m²) before mating.

Pregnancy

Teratogenic effects: *Pregnancy Category C.*

Reproductive studies conducted in rats and rabbits have not demonstrated evidence of developmental abnormalities. However, animal reproduction studies are not always predictive of human response. There are no adequate, well-controlled studies in pregnant women. Nabumetone should be used in pregnancy only if the potential benefit justifies the potential risk to the fetus.

Nonteratogenic effects

Because of the known effects of non-steroidal anti-inflammatory drugs on the fetal cardiovascular system (closure of ductus arteriosus), use during pregnancy (particularly late pregnancy) should be avoided.

Labor and delivery

In rat studies with NSAIDs, as with other drugs known to inhibit prostaglandin synthesis, an increased incidence of dystocia, delayed parturition, and decreased pup survival occurred. The effects of nabumetone tablets on labor and delivery in pregnant women are unknown.

Nursing mothers

It is not known whether this drug is excreted in human milk, however 6MNA is excreted in the milk of lactating rats. Because many drugs are excreted in human milk and because of the potential for serious adverse reactions in nursing infants from nabumetone, a decision should be made whether to discontinue nursing or to discontinue the drug, taking into account the importance of the drug to the mother.

Pediatric use

Safety and effectiveness in pediatric patients have not been established.

Geriatric use

As with any NSAIDs, caution should be exercised in treating the elderly (65 years and older). Of the 1,677 patients in US clinical studies who were treated with nabumetone, 411 patients (24%) were 65 years or older; 22 patients (1 %) were 75 years or older. No overall differences in efficacy or safety were observed between these older patients and younger ones. Similar results were observed in a 1-year, non-US postmarketing surveillance study of 10,800 patients treated with nabumetone, of whom 4,577 patients (42%) were 65 years or older.

ADVERSE REACTIONS

Adverse reaction information was derived from blinded-controlled and open-labelled clinical trials and from worldwide marketing experience. In the description below, rates of the more common events (greater than 1%) and many of the less common events (less than 1%) represent results of US clinical studies.

Of the 1,677 patients who received nabumetone during US clinical trials, 1,524 were treated for at least 1 month, 1,327 for at least 3 months, 929 for at least a year, and 750 for at least 2 years. More than 300 patients have been treated for 5 years or longer.

The most frequently reported adverse reactions were related to the gastrointestinal tract and included diarrhea, dyspepsia, and abdominal pain.

Incidence ~ 1% - Probably Causally Related

Gastrointestinal: Diarrhea (14%), dyspepsia (13%), abdominal pain (12%), constipation*, flatulence*, nausea*, positive stool guaiac*, dry mouth, gastritis, stomatitis, vomiting.

Central Nervous System: Dizziness*, headache*, fatigue, increased sweating, insomnia, nervousness, somnolence.

Dermatologic: Pruritus*, rash*.

Special Senses: Tinnitus*

Miscellaneous: Edema*

*Incidence of reported reaction between 3% and 9%. Reactions occurring in 1% to 3% of the patients are unmarked.

Incidence <1% - Probably Causally Related*

Gastrointestinal: Anorexia, jaundice, duodenal ulcer, dysphagia, gastric ulcer, gastroenteritis, gastrointestinal bleeding, increased appetite, liver function abnormalities, melena, *hepatic failure*.

Central Nervous System: Asthenia, agitation, anxiety, confusion, depression, malaise, paresthesia, tremor, vertigo.

Dermatologic: Bullous eruptions, photosensitivity, urticaria, pseudoporphyria cutanea tarda, *toxic epidermal necrolysis, erythema multiforme, Stevens-Johnson syndrome*.

Cardiovascular: Vasculitis.

Metabolic: Weight gain.

Respiratory: Dyspnea, *eosinophilic pneumonia, hypersensitivity pneumonitis, idiopathic interstitial pneumonitis*.

Genitourinary: Albuminuria, azotemia, *hyperuricemia, interstitial nephritis, nephrotic syndrome, vaginal bleeding, renal failure*.

Special Senses: Abnormal vision.

Hematologic/Lymphatic: *Thrombocytopenia*.

Hypersensitivity: *Anaphylactoid reaction, anaphylaxis, angioneurotic edema*

*Adverse reactions reported only in worldwide postmarketing experience or in the literature, not seen in clinical trials, are considered rarer and are italicized.

Incidence <1% - Causal Relationship Unknown

Gastrointestinal: Bilirubinuria, duodenitis, eructation, gallstones, gingivitis, glossitis, pancreatitis, rectal bleeding.

Central Nervous System: Nightmares.

Dermatologic: Acne, alopecia.

Cardiovascular: Angina, arrhythmia, hypertension, myocardial infarction, palpitations, syncope, thrombophlebitis.

Respiratory: Asthma, cough.

Genitourinary: Dysuria, hematuria, impotence, renal stones.

Special Senses: Taste disorder.

Body as a Whole: Fever, chills.

Hematologic/Lymphatic: Anemia, leukopenia, granulocytopenia.

Metabolic/Nutritional: Hyperglycemia, hypokalemia, weight loss.

OVERDOSAGE

Symptoms following acute NSAIDs overdoses are usually limited to lethargy, drowsiness, nausea, vomiting, and epigastric pain, which are generally reversible with supportive care. Gastrointestinal bleeding can occur. Hypertension, acute renal failure, respiratory depression, and coma may occur, but are rare. Anaphylactoid reactions have been reported with therapeutic ingestion of NSAIDs, and may occur following an overdose.

Patients should be managed by symptomatic and supportive care following a NSAIDs overdose. There are no specific antidotes. Emesis and/or activated charcoal (60 to 100 grams in adults, 1 to 2 g/kg in children), and/or osmotic cathartic may be indicated in patients seen within 4 hours of ingestion with symptoms or following a large overdose (5 to 10 times the usual dose). Forced diuresis, alkalinization of urine, hemodialysis, or hemoperfusion may not be useful due to high protein binding.

There have been overdoses of up to 25 grams of nabumetone reported with no long-term sequelae following standard emergency treatment (i.e., activated charcoal, gastric lavage, IV H₂-blockers, etc.).

DOSAGE AND ADMINISTRATION

Carefully consider the potential benefits and risks of nabumetone tablets and other treatment options before deciding to use nabumetone. Use the lowest effective dose for the shortest duration consistent with individual patient treatment goals (see **WARNINGS**).

After observing the response to initial therapy with nabumetone tablets, the dose and frequency should be adjusted to suit an individual patient's needs.

Osteoarthritis and Rheumatoid Arthritis:

The recommended starting dose is 1,000 mg taken as a single dose with or without food. Some patients may obtain more symptomatic relief from 1,500 mg to 2,000 mg per day. Nabumetone tablets can be given in either a single or twice-daily dose. Dosages greater than 2,000 mg per day have not been studied. The lowest effective dose should be used for chronic treatment (see **WARNINGS: Renal Effects:**). Patients weighing under 50 kg may be less likely to require dosages beyond 1,000 mg; therefore, after observing the response to initial therapy, the dose should be adjusted to meet individual patients' requirements.

HOW SUPPLIED

500 mg-White film-coated, oval-shaped biconvex tablets debossed with IG on one side and 257 on the other are supplied in bottles of 20 (NDC 10544-003-20), 30 (NDC 10544-003-30), 60 (NDC 10544-003-60) and 90 (NDC 10544-003-90).

750 mg-Beige colored, film-coated, oval-shaped biconvex tablets debossed with IG on one side and 258 on the other are supplied in bottles of 20 (NDC 10544-271-20), 30 (NDC 10544-271-30), 60 (NDC 10544-271-60) and 90 (NDC 10544-271-90).

Store at 20° to 25°C (68° to 77 °F) [See USP Controlled Room Temperature].

Dispense in tight, light-resistant container as defined in the USP, with a child-resistant closure (as required).

**Medication Guide for
Non-Steroidal Anti-inflammatory Drugs (NSAIDs)
(See the end of this Medication Guide for a list of prescription NSAID medicines.)**

What is the most important information I should know about medicines called Non-Steroidal Anti-Inflammatory Drugs (NSAIDs)?

NSAID medicines may increase the chance of a heart attack or stroke that can lead to death. This chance increases:

- with longer use of NSAID medicines
- in people who have heart disease

NSAID medicines should never be used right before or after a heart surgery called a "coronary artery bypass graft (CABG)".

NSAID medicines can cause ulcers and bleeding in the stomach and intestines at any time during treatment.

Ulcers and bleeding:

- can happen without warning symptoms
- may cause death

The chance of a person getting an ulcer or bleeding increases with:

- taking medicines called "corticosteroids" and "anticoagulants"
- longer use
- smoking
- drinking alcohol
- older age
- having poor health

NSAID medicines should only be used:

- exactly as prescribed
- at the lowest dose possible for your treatment
- for the shortest time needed

What are Non-Steroidal Anti-Inflammatory Drugs (NSAIDs)?

NSAID medicines are used to treat pain and redness, swelling, and heat (inflammation) from medical conditions such as:

- different types of arthritis
- menstrual cramps and other types of short-term pain

Who should not take a Non-Steroidal Anti-Inflammatory Drug (NSAID)?

Do not take an NSAID medicine:

- if you had an asthma attack, hives, or other allergic reaction with aspirin or any other NSAID medicine
- for pain right before or after heart bypass surgery

Tell your healthcare provider:

- about all of your medical conditions
- about all of the medicines you take. NSAIDs and some other medicines can interact with each other

and cause serious side effects. **Keep a list of your medicines to show to your healthcare provider and pharmacist.**

- if you are pregnant. NSAID medicines should not be used by pregnant women late in their pregnancy.
- if you are breastfeeding. **Talk to your doctor.**

What are the possible side effects of Non-Steroidal Anti-Inflammatory Drugs (NSAIDs)?

Serious side effects include: <ul style="list-style-type: none">• heart attack• stroke• high blood pressure• heart failure from body swelling (fluid retention)• kidney problems including kidney failure• bleeding and ulcers in the stomach and intestine• low red blood cells (anemia)• life-threatening skin reactions• life-threatening allergic reactions• liver problems including liver failure• asthma attacks in people who have asthma	Other side effects include: <ul style="list-style-type: none">• stomach pain• constipation• diarrhea• gas• heartburn• nausea• vomiting• dizziness
--	---

Get emergency help right away if you have any of the following symptoms:

<ul style="list-style-type: none">• shortness of breath or trouble breathing• chest pain• weakness in one part or side of your body	<ul style="list-style-type: none">• slurred speech• swelling of the face or throat
---	---

Stop your NSAID medicine and call your healthcare provider right away if you have any of the following symptoms:

<ul style="list-style-type: none">• nausea• more tired or weaker than usual• itching• your skin or eyes look yellow• stomach pain• flu-like symptoms• vomit blood	<ul style="list-style-type: none">• there is blood in your bowel movement or it is black and sticky like tar• unusual weight gain• skin rash or blisters with fever• swelling of the arms and legs, hands and feet
---	---

These are not all the side effects with NSAID medicines. Talk to your healthcare provider or pharmacist for more information about NSAID medicines.

Other information about Non-Steroidal Anti-Inflammatory Drugs (NSAIDs)

- Aspirin is an NSAID medicine but it does not increase the chance of a heart attack. Aspirin can cause bleeding in the brain, stomach, and intestines. Aspirin can also cause ulcers in the stomach and intestines.
- Some of these NSAID medicines are sold in lower doses without a prescription (over-the-counter). Talk to your healthcare provider before using over-the-counter NSAIDs for more than 10 days.

NSAID medicines that need a prescription:

Generic Name	Tradename
Celecoxib	Celebrex
Diclofenac	Cataflam, Voltaren, Arthrotec (combined with misoprostol)
Diflunisal	Dolobid
Etodolac	Lodine, Lodine XL
Fenoprofen	Nalfon, Nalfon 200
Flurbiprofen	Ansaid
Ibuprofen	Motrin, Tab-Profen, Vicoprofen (combined with hydrocodone), Combunox (combined with oxycodone)
Indomethacin	Indocin, Indocin SR, Indo-Lemmon, Indomethagan
Ketoprofen	Oruvail
Ketorolac	Toradol
Mefenamic Acid	Ponstel
Meloxicam	Mobic
Nabumetone	Relafen
Naproxen	Naprosyn, Anaprox, Anaprox DS, EC-Naproxyn, Naprelan, Naprapac (copackaged with lansoprazole)
Oxaprozin	Daypro
Piroxicam	Feldene
Sulindac	Clinoril
Tolmetin	Tolectin, Tolectin DS, Tolectin 600

Rx only

Manufactured by:

INVAGEN Pharmaceuticals, Inc
Hauppauge, NY 11788

Manufactured for:



Glenmark Generics Inc., USA
Mahwah, NJ 07430

Questions? 1 (888) 721-7115
www.glenmarkgenerics.com

Marketed/ Packaged by:

Blenheim Pharmacal, Inc.
North Blenheim, NY 12131, (USA)

May 2009

Principle Display Panel- 750mg 60s

Blenheim Pharmacal, Inc

NDC 10544-271-60

Nabumetone, USP

750mg 60 Tablets

The image shows a product label for Nabumetone Tablets, USP 750mg 60 Tablets. The label is divided into several sections. On the left, it lists the NDC (10544-271-60), MFG (68462-359-05), LCN# (000), and Rev (3). The product name is prominently displayed as Nabumetone Tablets, USP 750mg 60 Tablets, Rx Only. Below this, it provides dosage and storage instructions. The right side of the label features a barcode and the alphanumeric code 1054427160+BP00000000+0000. The bottom section of the label contains manufacturing and packaging information, including the manufacturer (Glenmark Generics Inc., USA) and the packager (Blenheim Pharmacal, Inc., North Blenheim, NY 12131). The label also includes a QR code and a vertical barcode on the right edge.

NDC: 10544-271-60 LCN# 000
MFG: 68462-359-05 Rev 3

**Nabumetone
Tablets, USP
750mg
60 Tablets
Rx Only**

Dosage: See package insert
Store at controlled room temperature
20°-25°C (68°-77°F)

Store in a tight, light-resistant
container (See USP). Keep out of the
reach of children

Each tablet contains
Nabumetone, USP 750mg

Mfg: Glenmark Generics Inc., USA
Packaged By: Blenheim Pharmacal, Inc.,
North Blenheim, NY 12131
Lot #: BP00000000
Exp.Date: 00/00/0000

1054427160+BP00000000+0000

Nabumetone Tablets, USP 750mg
60 Tablets
NDC: 10544-271-60 MFG: 68462-359-05
Lot #: BP00000000 Exp.Date: 00/00/0000

Nabumetone Tablets, USP 750mg
60 Tablets
NDC: 10544-271-60 MFG: 68462-359-05
Lot #: BP00000000 Exp.Date: 00/00/0000

Nabumetone Tablets, USP 750mg
60 Tablets
NDC: 10544-271-60 MFG: 68462-359-05
Lot #: BP00000000 Exp.Date: 00/00/0000

Nabumetone Tablets, USP 750mg
60 Tablets
NDC: 10544-271-60 MFG: 68462-359-05
Lot #: BP00000000 Exp.Date: 00/00/0000

Principle Display Panel- 500mg 60s

Blenheim Pharmacal, Inc

NDC 10544-003-60

Nabumetone, USP

500mg 60 Tablets

NABUMETONE

nabumetone tablet, film coated

Product Information

Product Type	HUMAN PRESCRIPTION DRUG	Item Code (Source)	NDC:10544-003(NDC:68462-358)
Route of Administration	ORAL		

Active Ingredient/Active Moiety

Ingredient Name	Basis of Strength	Strength
NABUMETONE (UNII: LW0TIW155Z) (NABUMETONE - UNII:LW0TIW155Z)	NABUMETONE	500 mg

Inactive Ingredients

Ingredient Name	Strength
CELLULOSE, MICROCRYSTALLINE (UNII: OP1R32D61U)	
HYPROMELLOSES (UNII: 3NXW29V3WO)	
SODIUM LAURYL SULFATE (UNII: 368GB5141J)	
SILICON DIOXIDE (UNII: ETJ7Z6XBU4)	
MAGNESIUM STEARATE (UNII: 70097M6I30)	
TITANIUM DIOXIDE (UNII: 15FIX9V2JP)	
POLYETHYLENE GLYCOLS (UNII: 3WJQ0SDW1A)	
POLYSORBATE 80 (UNII: 6OZP39ZG8H)	

Product Characteristics

Color	white	Score	no score
Shape	OVAL	Size	9mm
Flavor		Imprint Code	IG;257
Contains			

Packaging

#	Item Code	Package Description	Marketing Start Date	Marketing End Date
1	NDC:10544-003-20	20 in 1 BOTTLE; Type 0: Not a Combination Product	04/10/2012	
2	NDC:10544-003-30	30 in 1 BOTTLE; Type 0: Not a Combination Product	12/31/2013	
3	NDC:10544-003-60	60 in 1 BOTTLE; Type 0: Not a Combination Product	12/31/2013	
4	NDC:10544-003-90	90 in 1 BOTTLE; Type 0: Not a Combination Product	12/31/2013	

Marketing Information

Marketing Category	Application Number or Monograph Citation	Marketing Start Date	Marketing End Date
ANDA	ANDA078671	06/11/2010	

NABUMETONE

nabumetone tablet, film coated

Product Information

Product Type	HUMAN PRESCRIPTION DRUG	Item Code (Source)	NDC:10544-271(NDC:68462-359)
Route of Administration	ORAL		

Active Ingredient/Active Moiety

Ingredient Name	Basis of Strength	Strength
NABUMETONE (UNII: LW0TIW155Z) (NABUMETONE - UNII:LW0TIW155Z)	NABUMETONE	750 mg

Inactive Ingredients

Ingredient Name	Strength
CELLULOSE, MICROCRYSTALLINE (UNII: OP1R32D61U)	
HYPROMELLOSES (UNII: 3NXW29V3WO)	
SODIUM LAURYL SULFATE (UNII: 368GB5141J)	
SILICON DIOXIDE (UNII: ETJ7Z6XBU4)	
MAGNESIUM STEARATE (UNII: 70097M6I30)	
TITANIUM DIOXIDE (UNII: 15FIX9V2JP)	
POLYETHYLENE GLYCOLS (UNII: 3WJQ0SDW1A)	
FERRIC OXIDE RED (UNII: 1K09F3G675)	
FERRIC OXIDE YELLOW (UNII: EX438O2MRT)	

Product Characteristics

Color	brown (beige)	Score	no score
Shape	OVAL	Size	10 mm
Flavor		Imprint Code	IG;258
Contains			

Packaging

#	Item Code	Package Description	Marketing Start Date	Marketing End Date
1	NDC:10544-271-20	20 in 1 BOTTLE; Type 0: Not a Combination Product	11/18/2013	
2	NDC:10544-271-30	30 in 1 BOTTLE; Type 0: Not a Combination Product	11/18/2013	
3	NDC:10544-271-60	60 in 1 BOTTLE; Type 0: Not a Combination Product	11/18/2013	
4	NDC:10544-271-90	90 in 1 BOTTLE; Type 0: Not a Combination Product	11/18/2013	

Marketing Information

Marketing Category	Application Number or Monograph Citation	Marketing Start Date	Marketing End Date
ANDA	ANDA078671	10/08/2013	

Labeler - Blenheim Pharmacal, Inc. (171434587)

Registrant - Blenheim Pharmacal, Inc. (171434587)

Establishment

Name	Address	ID/FEI	Business Operations
Blenheim Pharmacal, Inc.		171434587	repack(10544-003, 10544-271) , relabel(10544-003, 10544-271)

Revised: 5/2015

Blenheim Pharmacal, Inc.