

CHERRY COUGH DROPS- menthol lozenge

Whole Foods

Disclaimer: Most OTC drugs are not reviewed and approved by FDA, however they may be marketed if they comply with applicable regulations and policies. FDA has not evaluated whether this product complies.

Menthol 5.8 mg

Active ingredient (in each drop)

Menthol 5.8 mg

Purpose

Cough suppressant / Oral anesthetic

Uses temporarily relieves:

- cough as may occur with a cold
- occasional minor irritation and sore throat

Warnings

Sore throat warning: if sore throat is severe, persists for more than 2 days, is accompanied or followed by fever, headache, rash, swelling, nausea, or vomiting, consult a doctor promptly. If sore mouth symptoms do not improve in 7 days, see your dentist or doctor promptly. These symptoms may be serious.

Ask a doctor before use if you have:

- persistent or chronic cough such as occurs with smoking, asthma, or emphysema
- cough accompanied by excessive phlegm (mucus)

Stop use and ask doctor if

- cough persists for more than 7 days, tends to recur, or is accompanied by fever, rash, or persistent headaches. These could be signs of a serious condition.
- sore throat is severe, or irritation, pain or redness lasts or worsens
- sore mouth does not improve in 7 days

If pregnant or breast-feeding, ask a health professional before use.

Keep out of reach of children.

Directions

adults and children 5 years and over - dissolve 1 drop slowly in mouth. Repeat every 2 hours as needed or as directed by a doctor.

children under 5 years - ask a doctor

Other information

- 10 calories per drop
- Contains soy

Inactive ingredients: Corn syrup, eucalyptus oil, glucose syrup, glycerin, medium chain triglycerides, natural flavors, soybean oil, sucrose, water.

Questions, Comments?

- customer.questions@wholefoods.com
- **1-844-936-8255**



NDC 42681-6514-2



NATURAL CHERRY FLAVOR

Cough Drops

Menthol-Cough Suppressant

menthol cough suppressant

Oral Anesthetic

Free of Dyes and Artificial Flavors

Soothes Sore Throat Pain

Temporarily Relieves Cough

Compare To The Active Ingredient In Halls®†

30 Drops



PN-502730

†THIS PRODUCT IS NOT MANUFACTURED OR DISTRIBUTED BY HALLS, LTD., OWNER OF THE REGISTERED TRADEMARK HALLS®, OR BY ANY OF ITS AFFILIATES.



DISTRIBUTED BY:
WHOLE FOODS MARKET | 550 BOWIE STREET, AUSTIN, TX 78703
©2020 WHOLE FOODS MARKET LP | www.wholefoodsmarket.com
TAMPER EVIDENT: DO NOT USE IF BAG IS TORN OR OPEN.
KEEP OUT OF REACH OF CHILDREN.

Ask a doctor before use if you have:

- persistent or chronic cough such as occurs with smoking, asthma, or emphysema
- cough accompanied by excessive phlegm (mucus)

Stop use and ask doctor if

- cough persists for more than 7 days, tends to recur, or is accompanied by fever, rash, or persistent headache. These could be signs of a serious condition.
- sore throat is severe, or irritation, pain or redness lasts or worsens
- sore mouth does not improve in 7 days

If pregnant or breast-feeding, ask a health professional before use. Keep out of reach of children.

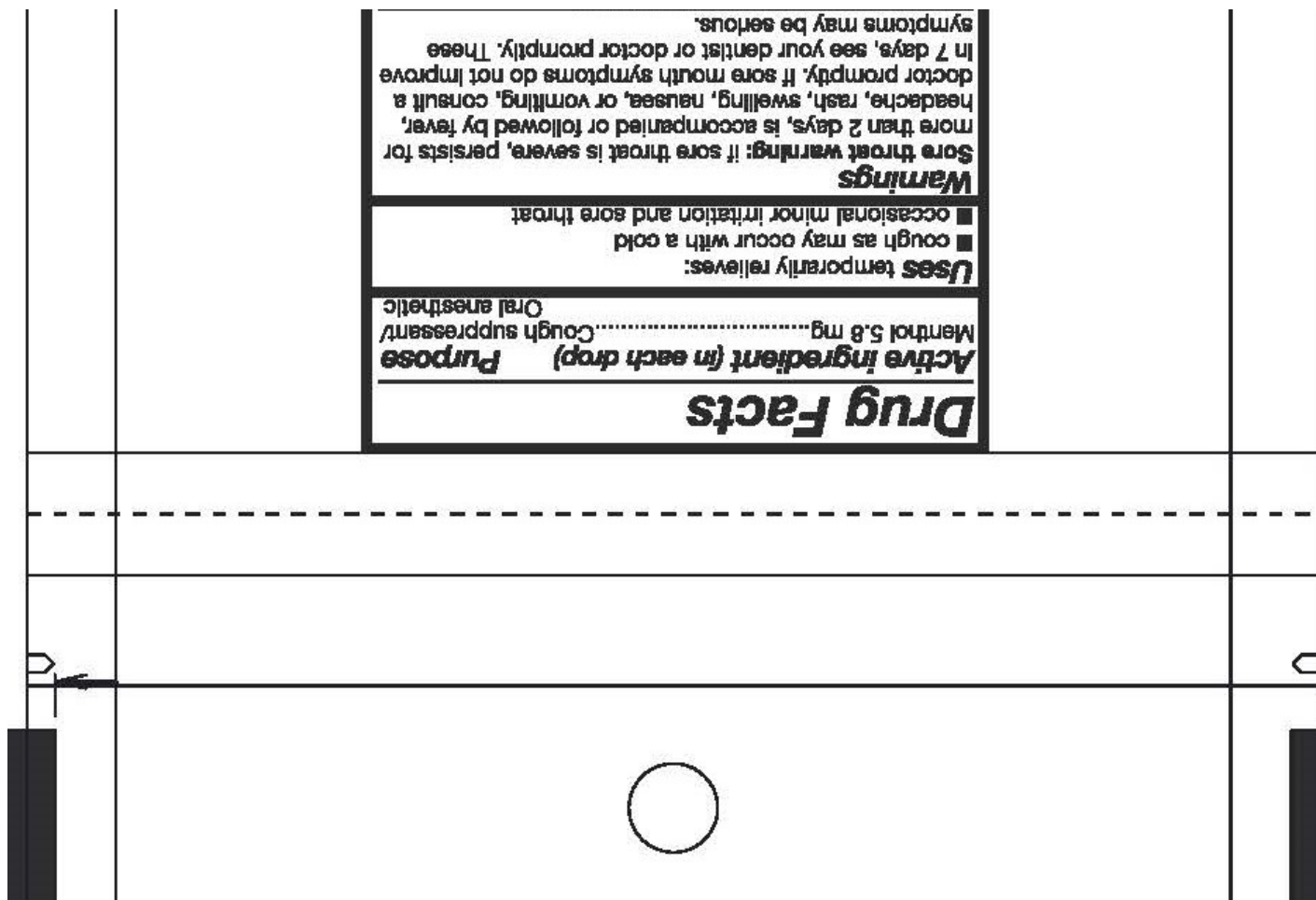
Directions

| | |
|--------------------------------------|---|
| adults and children 5 years and over | dissolve 1 drop slowly in mouth. Repeat every 2 hours as needed or as directed by a doctor. |
| children under 5 years | ask a doctor |

Other information 10 calories per drop ■ Contains soy.

Inactive ingredients: Corn starch, eucalyptus oil, glucose syrup, glycerin, medium chain triglycerides, natural flavors, soybean oil, sucrose, water.

Questions, Comments?
 ■ customer:questions@wholefoods.com ■ 1-844-936-8255



CHERRY COUGH DROPS

menthol lozenge

Product Information

| | | | |
|--------------------------------|----------------|---------------------------|----------------|
| Product Type | HUMAN OTC DRUG | Item Code (Source) | NDC:42681-6514 |
| Route of Administration | ORAL | | |

Active Ingredient/Active Moiety

| Ingredient Name | Basis of Strength | Strength |
|--|-------------------|----------|
| MENTHOL (UNII: L7T10EIP3A) (MENTHOL - UNII:L7T10EIP3A) | MENTHOL | 5.8 mg |

Inactive Ingredients

| Ingredient Name | Strength |
|--------------------------|----------|
| WATER (UNII: 059QF0KO0R) | |

Product Characteristics

| | | | |
|---------------|---------------------------------------|---------------------|----------|
| Color | white (Semi-translucent to off-white) | Score | no score |
| Shape | OVAL | Size | 16mm |
| Flavor | CHERRY | Imprint Code | B |

Contains**Packaging**

| # | Item Code | Package Description | Marketing Start Date | Marketing End Date |
|---|------------------|--|----------------------|--------------------|
| 1 | NDC:42681-6514-2 | 30 in 1 BAG; Type 0: Not a Combination Product | 06/10/2020 | |

**Marketing Information**

| Marketing Category | Application Number or Monograph Citation | Marketing Start Date | Marketing End Date |
|---------------------|--|----------------------|--------------------|
| OTC monograph final | part341 | 06/10/2020 | |

Labeler - Whole Foods (196175616)

Registrant - Bestco LLC (002149136)

Establishment

| Name | Address | ID/FEI | Business Operations |
|------------|---------|-----------|-------------------------|
| Bestco LLC | | 002149136 | manufacture(42681-6514) |

Revised: 11/2022

Whole Foods