

# MICAFUNGIN IN SODIUM CHLORIDE- micafungin in sodium chloride injection

## Baxter Healthcare Corporation

### HIGHLIGHTS OF PRESCRIBING INFORMATION

These highlights do not include all the information needed to use MICAFUNGIN IN SODIUM CHLORIDE INJECTION safely and effectively. See full prescribing information for MICAFUNGIN IN SODIUM CHLORIDE INJECTION.

### MICAFUNGIN IN SODIUM CHLORIDE injection, for intravenous use

Initial U.S. Approval: 2005

### INDICATIONS AND USAGE

Micafungin in Sodium Chloride Injection is an echinocandin indicated in adult and pediatric patients for (1):

- Treatment of Candidemia, Acute Disseminated Candidiasis, *Candida* Peritonitis and Abscesses in adult and pediatric patients 4 months of age and older for whom appropriate dosing with this formulation can be achieved.
- Treatment of Candidemia, Acute Disseminated Candidiasis, *Candida* Peritonitis and Abscesses **without** meningoencephalitis and/or ocular dissemination in pediatric patients younger than 4 months of age for whom appropriate dosing with this formulation can be achieved.
- Treatment of Esophageal Candidiasis in adult and pediatric patients 4 months of age and older for whom appropriate dosing with this formulation can be achieved.
- Prophylaxis of *Candida* Infections in adult and pediatric patients 4 months of age and older undergoing Hematopoietic Stem Cell Transplantation (HSCT) for whom appropriate dosing with this formulation can be achieved.

### Limitations of Use

- The safety and effectiveness of Micafungin in Sodium Chloride Injection have not been established for the treatment of candidemia **with** meningoencephalitis and/or ocular dissemination in pediatric patients younger than 4 months of age as a higher dose may be needed. (1, 2.4, 8.4)
- Micafungin in Sodium Chloride Injection has not been adequately studied in patients with endocarditis, osteomyelitis or meningoencephalitis due to *Candida*. (1)
- The efficacy of Micafungin in Sodium Chloride Injection against infections caused by fungi other than *Candida* has not been established. (1)

### DOSAGE AND ADMINISTRATION

- If a dose of Micafungin in Sodium Chloride Injection is required that does not equal 50 mg, 100 mg, or 150 mg, this product is not recommended for use and an alternative formulation of micafungin should be considered.

### Recommended Dosage Administered by Indication, Weight and Age (2.1, 2.2, 2.3, 2.4, 8.4)

| Adult  | Pediatric Patients<br>4 Months and Older<br>30 kg or less | Pediatric Patients<br>4 Months and Older greater<br>than 30 kg | Pediatric Patients Younger than 4<br>Months of Age |
|--|---|--|--|
| Treatment of Candidemia, Acute Disseminated Candidiasis, <i>Candida</i> Peritonitis and Abscesses  |   |  |  |
| 100 mg daily   | 2 mg/kg/day<br>(maximum 100 mg daily)                     |  | See below  |
| Treatment of Candidemia, Acute Disseminated Candidiasis, <i>Candida</i> Peritonitis and Abscesses <i>without</i> Meningoencephalitis and/or Ocular Dissemination |   |  |  |
| See above  | See above   |  | 4 mg/kg/day  |
| Treatment of Esophageal Candidiasis  |   |  |  |
| 150 mg daily   | 3 mg/kg/day   | 2.5 mg/kg/day<br>(maximum 150 mg daily)                        | Not approved                                       |
| Prophylaxis of <i>Candida</i> Infections in HSCT Recipients  |   |  |  |

|             |                                      |              |
|-------------|--------------------------------------|--------------|
| 50 mg daily | 1 mg/kg/day<br>(maximum 50 mg daily) | Not approved |
|-------------|--------------------------------------|--------------|

- Infuse over 1 hour. (2.6)
- See Full Prescribing Information for intravenous (IV) directions for preparation for administration instructions. (2.5, 2.6)

### **DOSAGE FORMS AND STRENGTHS**

Micafungin in Sodium Chloride Injection: 50 mg/50 mL (1 mg/mL), 100 mg/100 mL (1 mg/mL), and 150 mg/150 mL (1 mg/mL) in single-dose Galaxy containers. (3)

### **CONTRAINDICATIONS**

Micafungin in Sodium Chloride Injection is contraindicated in persons with known hypersensitivity to micafungin sodium, any component of Micafungin in Sodium Chloride Injection, or other echinocandins. (4)

### **WARNINGS AND PRECAUTIONS**

- Hypersensitivity Reactions: Anaphylaxis and anaphylactoid reactions (including shock) have been observed. Discontinue Micafungin in Sodium Chloride Injection and administer appropriate treatment. (5.1)
- Hematological Effects: Isolated cases of acute intravascular hemolysis, hemolytic anemia and hemoglobinuria have been reported. Monitor rate of hemolysis. Discontinue if severe. (5.2)
- Hepatic Effects: Abnormalities in liver tests; isolated cases of hepatic impairment, hepatitis, and hepatic failure have been observed. Monitor hepatic function. Discontinue if severe dysfunction occurs. (5.3)
- Renal Effects: Elevations in BUN and creatinine; isolated cases of renal impairment or acute renal failure have been reported. Monitor renal function. (5.4)
- Infusion and Injection Site Reactions can occur including rash, pruritus, facial swelling, and vasodilatation. Monitor infusion closely, slow infusion rate if necessary. (2.5, 5.5)
- High Sodium Load: Each 50, 100, and 150 mL Galaxy container contains 200, 400, and 600 mg of sodium, respectively. Avoid use in patients with congestive heart failure, elderly patients, and patients requiring restricted sodium intake. (5.6, 8.5)

### **ADVERSE REACTIONS**

- Most common adverse reactions across adult and pediatric clinical trials for all indications include diarrhea, nausea, vomiting, abdominal pain, pyrexia, thrombocytopenia, neutropenia, and headache. (6.1)
- In pediatric patients younger than 4 months of age, the following additional common adverse reactions were reported at an incidence rate of  $\geq 15\%$ : hypokalemia, acidosis, sepsis, anemia, and oxygen saturation decreased. (6.1)

**To report SUSPECTED ADVERSE REACTIONS, contact Baxter Healthcare Corporation at 1-866-888-2472 or FDA at 1-800-FDA-1088 or [www.fda.gov/medwatch](http://www.fda.gov/medwatch).**

### **DRUG INTERACTIONS**

Monitor for sirolimus, itraconazole or nifedipine toxicity, and dosage of sirolimus, itraconazole or nifedipine should be reduced, if necessary. (7)

### **USE IN SPECIFIC POPULATIONS**

Pregnancy: Based on animal data, Micafungin in Sodium Chloride Injection may cause fetal harm. Advise pregnant women of the risk to the fetus. (8.1)

**See 17 for PATIENT COUNSELING INFORMATION.**

**Revised: 3/2025**

## **FULL PRESCRIBING INFORMATION: CONTENTS\***

### **1 INDICATIONS AND USAGE**

### **2 DOSAGE AND ADMINISTRATION**

#### **2.1 Important Administration Instructions**

#### **2.2 Recommended Dosage for Adults**

- 2.3 Recommended Dosage for Pediatric Patients 4 Months and Older
- 2.4 Recommended Dosage for Pediatric Patients Younger than 4 Months of Age
- 2.5 Directions for Administration Preparation and Storage Conditions for Stability
- 2.6 Administration Instructions

### **3 DOSAGE FORMS AND STRENGTHS**

### **4 CONTRAINDICATIONS**

### **5 WARNINGS AND PRECAUTIONS**

- 5.1 Hypersensitivity Reactions
- 5.2 Hematological Effects
- 5.3 Hepatic Effects
- 5.4 Renal Effects
- 5.5 Infusion and Injection Site Reactions
- 5.6 High Sodium Load

### **6 ADVERSE REACTIONS**

- 6.1 Clinical Trials Experience
- 6.2 Postmarketing Experience

### **7 DRUG INTERACTIONS**

- 7.1 Effect of Other Drugs on Micafungin in Sodium Chloride Injection
- 7.2 Effect of Micafungin in Sodium Chloride Injection on Other Drugs

### **8 USE IN SPECIFIC POPULATIONS**

- 8.1 Pregnancy
- 8.2 Lactation
- 8.4 Pediatric Use
- 8.5 Geriatric Use
- 8.6 Use in Patients with Renal Impairment
- 8.7 Use in Patients with Hepatic Impairment
- 8.8 Race and Gender

### **9 DRUG ABUSE AND DEPENDENCE**

### **10 OVERDOSAGE**

### **11 DESCRIPTION**

### **12 CLINICAL PHARMACOLOGY**

- 12.1 Mechanism of Action
- 12.2 Pharmacodynamics
- 12.3 Pharmacokinetics
- 12.4 Microbiology

### **13 NONCLINICAL TOXICOLOGY**

- 13.1 Carcinogenesis, Mutagenesis, Impairment of Fertility
- 13.2 Animal Toxicology and/or Pharmacology

### **14 CLINICAL STUDIES**

- 14.1 Treatment of Candidemia and Other *Candida* Infections in Adult and Pediatric Patients 4 Months of Age and Older
- 14.2 Treatment of Esophageal Candidiasis in Adult and Pediatric Patients 4 Months of Age and Older
- 14.3 Prophylaxis of *Candida* Infections in Hematopoietic Stem Cell Transplant Recipients

### **16 HOW SUPPLIED/STORAGE AND HANDLING**

### **17 PATIENT COUNSELING INFORMATION**

\* Sections or subsections omitted from the full prescribing information are not listed.

---

## FULL PRESCRIBING INFORMATION

### 1 INDICATIONS AND USAGE

Micafungin in Sodium Chloride Injection is indicated for:

- Treatment of Candidemia, Acute Disseminated Candidiasis, *Candida* Peritonitis and Abscesses in adult and pediatric patients 4 months of age and older for whom appropriate dosing with this formulation can be achieved [see *Clinical Studies (14.1) and Use in Specific Populations (8.4)*].
- Treatment of Candidemia, Acute Disseminated Candidiasis, *Candida* Peritonitis and Abscesses **without** meningoencephalitis and/or ocular dissemination in pediatric patients younger than 4 months of age for whom appropriate dosing with this formulation can be achieved [see *Use in Specific Populations (8.4)*].
- Treatment of Esophageal Candidiasis in adult and pediatric patients 4 months of age and older for whom appropriate dosing with this formulation can be achieved [see *Clinical Studies (14.2)*].
- Prophylaxis of *Candida* Infections in adult and pediatric patients 4 months of age and older undergoing hematopoietic stem cell transplantation for whom appropriate dosing with this formulation can be achieved [see *Clinical Studies (14.3)*].

#### Limitations of Use

- The safety and effectiveness of Micafungin in Sodium Chloride Injection have **not** been established for the treatment of candidemia **with** meningoencephalitis and/or ocular dissemination in pediatric patients younger than 4 months of age as a higher dose may be needed [see *Use in Specific Populations (8.4)*].
- Micafungin in Sodium Chloride Injection has not been adequately studied in patients with endocarditis, osteomyelitis and meningoencephalitis due to *Candida*.
- The efficacy of Micafungin in Sodium Chloride Injection against infections caused by fungi other than *Candida* has not been established.

### 2 DOSAGE AND ADMINISTRATION

#### 2.1 Important Administration Instructions

If a dose of Micafungin in Sodium Chloride Injection is required that does not equal 50 mg, 100 mg, or 150 mg, this product is not recommended for use and an alternative formulation of micafungin should be considered.

#### 2.2 Recommended Dosage for Adults

The recommended dosage for adult patients based on indications are shown in Table 1.

**Table 1. Micafungin in Sodium Chloride Injection Dosage in Adult Patients**

| Indication                     | Recommended Dose Once Daily |
|--------------------------------|-----------------------------|
| Treatment of Candidemia, Acute |                             |

|   |               |
|---|---------------|
| Disseminated Candidiasis, <i>Candida</i> Peritonitis and Abscesses* | <b>100 mg</b> |
| Treatment of Esophageal Candidiasis†                                | <b>150 mg</b> |
| Prophylaxis of <i>Candida</i> Infections in HSCT Recipients‡        | <b>50 mg</b>  |

\* In patients treated successfully for candidemia and other *Candida* infections, the mean duration of treatment was 15 days (range 10 to 47 days).

† In patients treated successfully for esophageal candidiasis, the mean duration of treatment was 15 days (range 10 to 30 days).

‡ In hematopoietic stem cell transplant (HSCT) recipients who experienced success of prophylactic therapy, the mean duration of prophylaxis was 19 days (range 6 to 51 days).

## 2.3 Recommended Dosage for Pediatric Patients 4 Months and Older

The recommended dosage for pediatric patients 4 months of age and older based on indication and weight are shown in Table 2.

**Table 2. Micafungin in Sodium Chloride Injection Dosage in Pediatric Patients (4 Months of Age and Older)\***

| Indication  | Dosage for Pediatric Patients<br>4 Months of Age and Older |   |
|---|--|---|
|   | 30 kg or less  | Greater than 30 kg                                  |
| Treatment of Candidemia, Acute Disseminated Candidiasis, <i>Candida</i> Peritonitis and Abscesses | 2 mg/kg once daily<br>(maximum daily dose 100 mg)          |   |
| Treatment of Esophageal Candidiasis   | 3 mg/kg once daily   | 2.5 mg/kg once daily<br>(maximum daily dose 150 mg) |
| Prophylaxis of <i>Candida</i> Infections in HSCT Recipients                                       | 1 mg/kg once daily<br>(maximum daily dose 50 mg)           |   |

\* If a dose of Micafungin in Sodium Chloride Injection is required that does not equal 50 mg, 100 mg, or 150 mg, this product is not recommended for use and an alternative formulation of micafungin should be considered [see *Use in Specific Populations* (8.4)].

## 2.4 Recommended Dosage for Pediatric Patients Younger than 4 Months of Age

Treatment of Candidemia, Acute Disseminated Candidiasis, *Candida* Peritonitis and Abscesses **without** meningoencephalitis and/or ocular dissemination

The recommended dosage is 4 mg/kg once daily. If a dose of Micafungin in Sodium Chloride Injection is required that does not equal 50 mg, 100 mg, or 150 mg, this product is not recommended for use and an alternative formulation of micafungin should be considered.

The safety and effectiveness of Micafungin in Sodium Chloride Injection have **not** been established for the treatment of candidemia **with** meningoencephalitis and/or ocular dissemination in pediatric patients younger than 4 months of age as a higher dose may be needed [see *Use in Specific Populations* (8.4), *Clinical Pharmacology* (12.3) and

## **2.5 Directions for Administration Preparation and Storage Conditions for Stability**

Do not mix or co-infuse Micafungin in Sodium Chloride Injection with other medications. Micafungin has been shown to precipitate when mixed directly with a number of other commonly used medications. Please read this entire section carefully before beginning to prepare for administration.

### Preparation for Administration

- No further dilution is necessary.
- Suspend container from support.
- Remove protector from outlet port at bottom of container.
- Attach Intravenous administration set to outlet port. Refer to the manufacturer's instructions accompanying the administration set for complete directions.
- Check for minute leaks by squeezing container firmly. If leaks are detected, discard solution as sterility may be impaired.
- Parenteral drug products should be inspected visually for particulate matter and discoloration prior to administration, whenever solution and container permit. Do not use if there is any evidence of precipitation or foreign matter. Micafungin in Sodium Chloride Injection is a clear and colorless solution.
- Micafungin in Sodium Chloride Injection is preservative-free. Discard partially used bags. Do not freeze.

### Storage Conditions or Stability

- Solution is stable for up to 30 days in the original carton at room temperature up to 25°C (77°F). Once stored at room temperature, do not place back in the refrigerator. Discard Micafungin in Sodium Chloride Injection after 30 days if stored at room temperature [see *How Supplied/Storage and Handling (16)*].
- Do not Freeze.
- Micafungin in Sodium Chloride Injection does not require light protection during administration.

## **2.6 Administration Instructions**

### Adult Patients

Administer Micafungin in Sodium Chloride Injection by intravenous infusion only. Infuse over one hour. More rapid infusions may result in more frequent histamine-mediated reactions [see *Warnings and Precautions (5.5)*].

Flush an existing intravenous line with Sodium Chloride Injection prior to infusion of Micafungin in Sodium Chloride Injection.

### Pediatric Patients

Infuse Micafungin in Sodium Chloride Injection over one hour [see *Dosage and Administration (2.3, 2.4)*].

## **3 DOSAGE FORMS AND STRENGTHS**

Injection: Micafungin in Sodium Chloride Injection is available as a clear and colorless, sterile, refrigerated, premixed, iso-osmotic, nonpyrogenic solution in ready to use single-dose Galaxy containers as follows:

- 50 mg/50 mL (1 mg/mL), each 50 mL contains 50 mg of micafungin (present as micafungin sodium)
- 100 mg/100 mL (1 mg/mL), each 100 mL contains 100 mg of micafungin (present as micafungin sodium)
- 150 mg/150 mL (1 mg/mL), each 150 mL contains 150 mg of micafungin (present as micafungin sodium)

## **4 CONTRAINDICATIONS**

Micafungin in Sodium Chloride Injection is contraindicated in persons with known hypersensitivity to micafungin, any component of Micafungin in Sodium Chloride Injection, or other echinocandins.

## **5 WARNINGS AND PRECAUTIONS**

### **5.1 Hypersensitivity Reactions**

Isolated cases of serious hypersensitivity (anaphylaxis and anaphylactoid) reactions (including shock) have been reported in patients receiving micafungin for injection. If these reactions occur, Micafungin in Sodium Chloride Injection infusion should be discontinued and appropriate treatment administered.

### **5.2 Hematological Effects**

Acute intravascular hemolysis and hemoglobinuria was seen in a healthy volunteer during infusion of micafungin for injection (200 mg) and oral prednisolone (20 mg). Cases of significant hemolysis and hemolytic anemia have also been reported in patients treated with micafungin for injection. Patients who develop clinical or laboratory evidence of hemolysis or hemolytic anemia during Micafungin in Sodium Chloride Injection therapy should be monitored closely for evidence of worsening of these conditions and evaluated for the risk/benefit of continuing Micafungin in Sodium Chloride Injection therapy.

### **5.3 Hepatic Effects**

Laboratory abnormalities in liver function tests have been seen in healthy volunteers and patients treated with micafungin. In some patients with serious underlying conditions who were receiving micafungin along with multiple concomitant medications, clinical hepatic abnormalities have occurred, and isolated cases of significant hepatic impairment, hepatitis, and hepatic failure have been reported. Patients who develop abnormal liver function tests during Micafungin in Sodium Chloride Injection therapy should be monitored for evidence of worsening hepatic function and evaluated for the risk/benefit of continuing Micafungin in Sodium Chloride Injection therapy.

### **5.4 Renal Effects**

Elevations in BUN and creatinine, and isolated cases of significant renal impairment or

acute renal failure have been reported in patients who received micafungin for injection. In fluconazole-controlled trials, the incidence of drug-related renal adverse reactions was 0.4% for micafungin for injection-treated patients and 0.5% for fluconazole-treated patients. Patients who develop abnormal renal function tests during Micafungin in Sodium Chloride Injection therapy should be monitored for evidence of worsening renal function.

### **5.5 Infusion and Injection Site Reactions**

Possible histamine-mediated symptoms have been reported with micafungin for injection, including rash, pruritus, facial swelling, and vasodilatation. Slow the infusion rate if infusion reaction occurs [see *Dosage and Administration* (2.6)].

Injection site reactions, including phlebitis and thrombophlebitis have been reported, at micafungin for injection doses of 50 to 150 mg/day. These reactions tended to occur more often in patients receiving micafungin for injection via peripheral intravenous administration [see *Adverse Reactions* (6.1)].

### **5.6 High Sodium Load**

Each 50 mg/50 mL Galaxy container of Micafungin in Sodium Chloride Injection contains 200 mg of sodium, each 100 mg/100 mL Galaxy container of Micafungin in Sodium Chloride Injection contains 400 mg of sodium, and each 150 mg/150 mL Galaxy container of Micafungin in Sodium Chloride Injection contains 600 mg of sodium. Avoid use of Micafungin in Sodium Chloride Injection in patients with congestive heart failure, elderly patients, and patients requiring restricted sodium intake.

## **6 ADVERSE REACTIONS**

The following clinically significant adverse reactions are described elsewhere in the labeling:

- Hypersensitivity Reactions [see *Warnings and Precautions* (5.1)]
- Hematological Effects [see *Warnings and Precautions* (5.2)]
- Hepatic Effects [see *Warnings and Precautions* (5.3)]
- Renal Effects [see *Warnings and Precautions* (5.4)]
- Infusion and Injection Site Reactions [see *Warnings and Precautions* (5.5)]
- High Sodium Load [see *Warnings and Precautions* (5.6)]

### **6.1 Clinical Trials Experience**

Because clinical trials are conducted under widely varying conditions, adverse reaction rates observed in clinical trials of micafungin for injection cannot be directly compared to rates in clinical trials of another drug and may not reflect the rates observed in practice.

The overall safety of micafungin for injection was assessed in 520 healthy volunteers and 3417 adult and pediatric patients who received single or multiple doses of micafungin for injection across 50 clinical trials, including the invasive candidiasis, esophageal candidiasis and prophylaxis trials. The doses of micafungin for injection administered included doses above and below the recommended doses [see *Dosage and Administration* (2.1, 2.2, 2.3)] and ranged from 0.75 mg/kg to 15 mg/kg in pediatric patients and 12.5 mg to 150 mg/day or greater in adults.



## Clinical Trials Experience in Adults

In clinical trials with micafungin for injection, 2497/2748 (91%) adult patients experienced at least one adverse reaction.

### Candidemia and Other Candida Infections

In a randomized, double-blind trial for the treatment of candidemia and other *Candida* infections, adverse reactions occurred in 183/200 (92%) and 171/193 (89%) patients in the micafungin for injection 100 mg/day, and caspofungin (70 mg loading dose followed by 50 mg/day dose) treatment groups, respectively. Selected adverse reactions occurring in 5% or more of the patients and more frequently in the micafungin for injection treatment group, are shown in Table 3.

**Table 3. Selected\* Adverse Reactions in Adult Patients with Candidemia and Other Candida Infections**

| <b>Adverse Reactions by System Organ Class<sup>†</sup></b> | <b>Micafungin for Injection 100 mg n (%)</b> | <b>Caspofungin<sup>‡</sup> n (%)</b> |
|--|--|--------------------------------------|
| <b>Number of Patients</b>                                  | 200  | 193                                  |
| <b>Gastrointestinal Disorders</b>                          | <b>81 (41)</b>                               | <b>76 (39)</b>                       |
| Diarrhea   | 15 (8)                                       | 14 (7)                               |
| Vomiting   | 18 (9)                                       | 16 (8)                               |
| <b>Metabolism and Nutrition Disorders</b>                  | <b>77 (39)</b>                               | <b>73 (38)</b>                       |
| Hypoglycemia   | 12 (6)                                       | 9 (5)                                |
| Hyperkalemia   | 10 (5)                                       | 5 (3)                                |
| <b>General Disorders/Administration Site Conditions</b>    | <b>59 (30)</b>                               | <b>51 (26)</b>                       |
| <b>Investigations</b>                                      | <b>36 (18)</b>                               | <b>37 (19)</b>                       |
| Blood Alkaline Phosphatase Increased                       | 11 (6)                                       | 8 (4)                                |
| <b>Cardiac Disorders</b>                                   | <b>35 (18)</b>                               | <b>36 (19)</b>                       |
| Atrial Fibrillation  | 5 (3)  | 0                                    |

\* During IV Treatment + 3 days.

† Within a system organ class, patients may experience more than 1 adverse reactions

‡ 70 mg loading dose on day 1 followed by 50 mg/day thereafter (caspofungin).

Patient base: all randomized patients who received at least 1 dose of trial drug.

In a second, supportive, randomized, double-blind trial for the treatment of candidemia and other *Candida* infections, adverse reactions occurred in 245/264 (93%) and 250/265 (94%) adult and pediatric patients in the micafungin for injection (100 mg/day) and amphotericin B liposome (3 mg/kg/day) treatment groups, respectively. In this trial, the following adverse reactions were reported in patients at least 16 years of age in the micafungin for injection and amphotericin B liposome treatment groups, respectively: nausea (10% vs. 8%), diarrhea (11% vs. 11%), vomiting (13% vs. 9%), abnormal liver tests (4% vs. 3%), increased aspartate aminotransferase (3% vs. 2%), and increased blood alkaline phosphatase (3% vs. 2%).

### Esophageal Candidiasis

In a randomized, double-blind study for treatment of esophageal candidiasis, a total of 202/260 (78%) patients who received micafungin for injection 150 mg/day and 186/258 (72%) patients who received intravenous fluconazole 200 mg/day experienced an adverse reaction. Adverse reactions resulting in discontinuation were reported in 17 (7%) micafungin for injection-treated patients; and in 12 (5%) fluconazole-treated patients. Selected treatment-emergent adverse reactions occurring in 5% or more of the patients and more frequently in the micafungin for injection group, are shown in Table 4.

**Table 4. Selected\* Adverse Reactions in Adult Patients with Esophageal Candidiasis**

| <b>Adverse Reactions by System Organ Class<sup>†</sup></b> | <b>Micafungin for Injection<br/>150 mg/day<br/>n (%)</b> | <b>Fluconazole<br/>200 mg/day<br/>n (%)</b> |
|--|--|---|
| <b>Number of Patients</b>                                  | 260  | 258   |
| <b>Gastrointestinal Disorders</b>                          | <b>84 (32)</b>   | <b>93 (36)</b>                              |
| Diarrhea   | 27 (10)  | 29 (11)                                     |
| Nausea   | 20 (8)   | 23 (9)                                      |
| Vomiting   | 17 (7)   | 17 (7)                                      |
| <b>General Disorders/Administration Site Conditions</b>    | <b>52 (20)</b>   | <b>45 (17)</b>                              |
| Pyrexia  | 34 (13)  | 21 (8)                                      |
| <b>Nervous System Disorders</b>                            | <b>42 (16)</b>   | <b>40 (16)</b>                              |
| Headache   | 22 (9)   | 20 (8)                                      |
| <b>Vascular Disorders</b>                                  | <b>54 (21)</b>   | <b>21 (8)</b>                               |
| Phlebitis  | 49 (19)  | 13 (5)                                      |
| <b>Skin and Subcutaneous Tissue Disorders</b>              | <b>36 (14)</b>   | <b>26 (10)</b>                              |
| Rash   | 14 (5)   | 6 (2)                                       |

\* During treatment + 3 days.

† Within a system organ class, patients may experience more than 1 adverse reaction.

Patient base: all randomized patients who received at least 1 dose of trial drug.

#### *Prophylaxis of Candida Infections in Hematopoietic Stem Cell Transplant Recipients*

A double-blind trial was conducted in a total of 882 patients scheduled to undergo an autologous or allogeneic hematopoietic stem cell transplant. The median duration of treatment was 18 days (range 1 to 51 days) in both treatment arms.

All adult patients who received micafungin for injection (382) or fluconazole (409) experienced at least one adverse reaction during the study. Treatment-emergent adverse reactions resulting in micafungin for injection discontinuation were reported in 15 (4%) adult patients; while those resulting in fluconazole discontinuation were reported in 32 (8%). Selected adverse reactions reported in 15% or more of adult patients and more frequently in the micafungin for injection treatment arm, are shown in Table 5.

**Table 5. Selected Adverse Reactions in Adult Patients During Prophylaxis of Candida Infection in Hematopoietic Stem Cell Transplant Recipients**

| <b>System Organ Class</b>                     | <b>Micafungin for Injection<br/>50 mg/day<br/>n (%)</b> | <b>Fluconazole<br/>400 mg/day<br/>n (%)</b> |
|---|---|---|
| <b>Number of Patients</b>                     | 382   | 409   |
| <b>Gastrointestinal Disorders</b>             | <b>377 (99)</b>   | <b>404 (99)</b>                             |
| Diarrhea                                      | 294 (77)  | 327 (80)                                    |
| Nausea  | 270 (71)  | 290 (71)                                    |
| Vomiting                                      | 252 (66)  | 274 (67)                                    |
| Abdominal Pain                                | 100 (26)  | 93 (23)                                     |
| <b>Blood and Lymphatic System Disorders</b>   | <b>368 (96)</b>   | <b>385 (94)</b>                             |
| Neutropenia                                   | 288 (75)  | 297 (73)                                    |
| Thrombocytopenia                              | 286 (75)  | 280 (69)                                    |
| <b>Skin and Subcutaneous Tissue Disorders</b> | <b>257 (67)</b>   | <b>275 (67)</b>                             |
| Rash  | 95 (25)   | 91 (22)                                     |
| <b>Nervous System Disorders</b>               | <b>250 (65)</b>   | <b>254 (62)</b>                             |
| Headache                                      | 169 (44)  | 154 (38)                                    |
| <b>Psychiatric Disorders</b>                  | <b>233 (61)</b>   | <b>235 (58)</b>                             |
| Insomnia                                      | 142 (37)  | 140 (34)                                    |
| Anxiety                                       | 84 (22)   | 87 (21)                                     |
| Cardiac Disorders                             | 133 (35)  | 138 (34)                                    |
| Tachycardia                                   | 99 (26)   | 91 (22)                                     |

Patient base: all randomized adult patients who received at least 1 dose of trial drug.

Other selected adverse reactions reported at less than 5% in adult clinical trials are listed below:

- *Blood and lymphatic system disorders:* coagulopathy, pancytopenia, thrombotic thrombocytopenic purpura
- *Cardiac disorders:* cardiac arrest, myocardial infarction, pericardial effusion
- *General disorders and administration site conditions:* infusion reaction, injection site thrombosis
- *Hepatobiliary disorders:* hepatocellular damage, hepatomegaly, jaundice, hepatic failure
- *Immune disorders:* hypersensitivity, anaphylactic reaction
- *Metabolism and nutrition disorders:* hypernatremia, hypokalemia
- *Nervous system disorders:* convulsions, encephalopathy, intracranial hemorrhage
- *Psychiatric disorders:* delirium
- *Skin and subcutaneous tissue disorders:* urticaria

#### Clinical Trials Experience in Pediatric Patients

The safety of micafungin for injection was assessed in 593 pediatric patients, 425 of whom were 4 months through 16 years of age and 168 of whom were 3 days to less than 4 months of age who received at least one dose of micafungin for injection across

15 clinical trials.

Of the 425 pediatric patients, 4 months through 16 years of age enrolled in 11 clinical trials, 235 (55%) were male, 290 (68%) were white, with the following age distribution: 62 (15%) 4 months to <2 years, 108 (25%) 2 to 5 years, 140 (33%) 6 to 11 years, and 115 (27%) 12 to 16 years of age. The mean treatment duration was 26.1 days. A total of 246 patients received at least one dose of micafungin for injection ranging from 2 to 10 mg/kg. Overall, 388/425 (91%) patients experienced at least one adverse reaction. Adverse reactions occurring in  $\geq 15\%$  or more of micafungin-treated pediatric patients 4 months of age and older are: vomiting (32%), diarrhea (24%), pyrexia (24%), hypokalemia (22%), nausea (21%), mucosal inflammation (19%), thrombocytopenia (19%), abdominal pain (18%), headache (15%), and hypertension (15%).

Two randomized, double-blind active-controlled trials included pediatric patients. In the invasive candidiasis/candidemia trial, the efficacy and safety of micafungin for injection (2 mg/kg/day for patients weighing 40 kg or less and 100 mg/day for patients weighing greater than 40 kg) was compared to amphotericin B liposome (3 mg/kg/day) in 112 pediatric patients. Treatment-emergent adverse reactions occurred in 51/56 (91%) of patients in the micafungin for injection group and 52/56 (93%) of patients in the amphotericin B liposome group. Treatment-emergent adverse reactions resulting in drug discontinuation were reported in 2 (4%) micafungin for injection-treated pediatric patients and in 9 (16%) amphotericin B liposome-treated pediatric patients.

The prophylaxis study in patients undergoing HSCT investigated the efficacy of micafungin for injection (1 mg/kg/day for patients weighing 50 kg or less and 50 mg/day for patients weighing greater than 50 kg) as compared to fluconazole (8 mg/kg/day for patients weighing 50 kg or less and 400 mg/day for patients weighing greater than 50 kg). All 91 pediatric patients experienced at least one treatment-emergent adverse reaction. Three (7%) pediatric patients discontinued micafungin for injection due to adverse reaction, while one (2%) patient discontinued fluconazole.

Selected adverse reactions, occurring in 15% or more of the patients and more frequently in a micafungin for injection group, for the two comparative trials are shown in Table 6.

**Table 6. Selected Adverse Reactions in Pediatric Patients with Candidemia and Other Candida Infections (C/IC), and in Hematopoietic Stem-Cell Recipients During Prophylaxis of Candida Infections**

| Adverse Reactions*         | C/IC†  |  | Prophylaxis                                    |                                |
|----------------------------|--|--|--|--------------------------------|
|                            | Micafungin<br>for Injection<br>n = 56<br>n (%) | Amphotericin<br>B<br>liposome<br>n = 56<br>n (%) | Micafungin<br>for Injection<br>n = 43<br>n (%) | Fluconazole<br>n = 48<br>n (%) |
| Gastrointestinal disorders | 22 (40)  | 18 (32)  | 43 (100)                                       | 45 (94)                        |
| Vomiting                   | 10 (18)  | 8 (14)   | 28 (65)  | 32 (67)                        |
| Diarrhea                   | 4 (7)  | 5 (9)  | 22 (51)  | 31 (65)                        |
| Nausea                     | 4 (7)  | 4 (7)  | 30 (70)  | 25 (52)                        |
| Abdominal pain             | 2 (4)  | 2 (4)  | 15 (35)  | 12 (25)                        |
| Abdominal distension       | 1 (2)  | 1 (2)  | 8 (19)   | 6 (13)                         |

|   |         |         |         |         |
|---|---------|---------|---------|---------|
| <b>General disorders and administration site conditions</b> | 14 (25) | 14 (25) | 41 (95) | 46 (96) |
| Pyrexia   | 5 (9)   | 9 (16)  | 26 (61) | 31 (65) |
| Infusion-related reaction                                   | 0       | 3 (5)   | 7 (16)  | 4 (8)   |
| <b>Skin and subcutaneous tissue disorders</b>               | 11 (20) | 8 (14)  | 33 (77) | 38 (79) |
| Pruritus  | 0       | 1 (2)   | 14 (33) | 15 (31) |
| Rash  | 1 (2)   | 1 (2)   | 13 (30) | 13 (27) |
| Urticaria   | 0       | 1 (2)   | 8 (19)  | 4 (8)   |
| <b>Respiratory, thoracic and mediastinal disorders</b>      | 9 (16)  | 13 (23) | 30 (70) | 33 (69) |
| Epistaxis   | 0       | 0       | 4 (9)   | 8 (17)  |
| <b>Blood and lymphatic system disorders</b>                 | 17 (30) | 13 (23) | 40 (93) | 44 (92) |
| Thrombocytopenia  | 5 (9)   | 3 (5)   | 31 (72) | 37 (77) |
| Neutropenia   | 3 (5)   | 4 (7)   | 33 (77) | 34 (71) |
| Anemia  | 10 (18) | 6 (11)  | 22 (51) | 24 (50) |
| Febrile neutropenia   | 0       | 0       | 7 (16)  | 7 (15)  |
| <b>Investigations</b>                                       | 12 (21) | 8 (14)  | 24 (56) | 25 (52) |
| Alanine aminotransferase increased                          | 0       | 0       | 7 (16)  | 1 (2)   |
| Urine output decreased                                      | 0       | 0       | 10 (23) | 8 (17)  |
| <b>Cardiac disorders</b>                                    | 7 (13)  | 3 (5)   | 10 (23) | 17 (35) |
| Tachycardia   | 2 (4)   | 1 (2)   | 7 (16)  | 12 (25) |
| <b>Renal and urinary disorders</b>                          | 4 (7)   | 4 (7)   | 16 (37) | 15 (31) |
| Hematuria   | 0       | 0       | 10 (23) | 7 (15)  |
| <b>Psychiatric disorders</b>                                | 3 (5)   | 1 (2)   | 20 (47) | 9 (19)  |
| Anxiety   | 0       | 0       | 10 (23) | 3 (6)   |

\* Within a system organ class, patients may experience more than 1 adverse reaction.

† Study population included 20 pediatric patients younger than 4 months of age (10 in each arm).

Other clinically significant adverse reactions reported at less than 15% in pediatric clinical trials are listed below:

- *Hepatobiliary disorders:* hyperbilirubinemia
- *Investigations:* liver tests abnormal
- *Renal Disorders:* renal failure

#### Clinical Trials Experience in Pediatric Patients Younger than 4 Months of Age

The safety of micafungin for injection was assessed in 168 pediatric patients younger than 4 months of age who received varying doses of micafungin for injection in 9 clinical trials. The mean treatment duration was 16.6 days. A total of 59 patients received micafungin for injection at doses  $\leq 4$  mg/kg/day and 109 patients received micafungin for injection doses  $> 4$  mg/kg/day [5 to 15 mg/kg/day (approximately 1.3 to 3.8 times the

recommended dosage in pediatric patients less than 4 months old)].

The adverse reaction profile of micafungin for injection in pediatric patients younger than 4 months of age was generally comparable to that of pediatric patients 4 months of age and older and adults. The most frequent adverse reactions ( $\geq 15\%$ ) in pediatric patients younger than 4 months old receiving a micafungin for injection dose of approximately 4 mg/kg/day included hypokalemia (25%), thrombocytopenia (25%), acidosis (20%), sepsis (20%), anemia (15%), oxygen saturation decreased (15%), and vomiting (15%). No new safety signals were seen in patients who received 5 to 15 mg/kg/day [see *Use in Specific Populations* (8.4)].

Additional clinically significant adverse reactions reported in less than 15% of pediatric patients younger than 4 months of age who received approximately 4 mg/kg/day are listed below:

- *Blood and Lymphatic System Disorders:* leukocytosis, thrombocytosis, coagulation disorder neonatal
- *Gastrointestinal Disorders:* hematochezia, intestinal perforation, ascites, ileus, intestinal infarction, diarrhea, abdominal distension
- *General Disorders and Administration Site Conditions:* peripheral swelling, generalized edema, pyrexia, infusion site extravasation, edema neonatal
- *Hepatobiliary Disorders:* hyperbilirubinemia
- *Investigations:* blood lactate dehydrogenase increased, blood urea increased, ECG QRS complex prolonged
- *Vascular Disorders:* neonatal hypotension, thrombophlebitis
- *Musculoskeletal and connective tissue disorders:* hypertonia neonatal
- *Respiratory, thoracic and mediastinal disorders:* pleural effusion, respiratory failure, neonatal aspiration, respiratory distress
- *Metabolism and nutrition disorders:* hyperglycemia, dehydration, hypocalcemia, hypermagnesemia

## 6.2 Postmarketing Experience

The following adverse reactions have been identified during post-approval use of micafungin for injection. Because these reactions are reported voluntarily from a population of uncertain size, it is not always possible to reliably estimate their frequency or establish a causal relationship to drug exposure.

- *Blood and lymphatic system disorders:* disseminated intravascular coagulation
- *Hepatobiliary disorders:* hepatic disorder
- *Renal and urinary disorders:* renal impairment
- *Skin and subcutaneous tissue disorders:* Stevens-Johnson syndrome, toxic epidermal necrolysis
- *Vascular disorders:* shock

## 7 DRUG INTERACTIONS

### 7.1 Effect of Other Drugs on Micafungin in Sodium Chloride Injection

#### CYP3A4, CYP2C9 and CYP2C19 Inhibitors

Co-administration of Micafungin in Sodium Chloride Injection with cyclosporine,

itraconazole, voriconazole and fluconazole did not alter the pharmacokinetics of micafungin.

#### CYP2C19 and CYP3A4 Inducer

Co-administration of Micafungin in Sodium Chloride Injection with rifampin and ritonavir did not alter the pharmacokinetics of micafungin.

#### Co-administration of Micafungin in Sodium Chloride Injection with Other Drugs

Co-administration of Micafungin in Sodium Chloride Injection with mycophenolate mofetil (MMF), amphotericin B, tacrolimus, prednisolone, sirolimus and nifedipine did not alter the pharmacokinetics of micafungin.

### **7.2 Effect of Micafungin in Sodium Chloride Injection on Other Drugs**

#### CYP3A4 Substrates

There was no effect of single or multiple doses of micafungin for injection on cyclosporine, tacrolimus, prednisolone, voriconazole and fluconazole pharmacokinetics.

Sirolimus AUC was increased by 21% with no effect on  $C_{max}$  in the presence of steady-state micafungin for injection compared with sirolimus alone. Nifedipine AUC and  $C_{max}$  were increased by 18% and 42%, respectively, in the presence of steady-state micafungin for injection compared with nifedipine alone. Itraconazole AUC and  $C_{max}$  were increased by 22% and 11%, respectively. Patients receiving sirolimus, nifedipine, and itraconazole in combination with micafungin for injection should be monitored for sirolimus, nifedipine, and itraconazole toxicity and the sirolimus, nifedipine, and itraconazole dosage should be reduced if necessary.

#### UDP-Glycosyltransferase Substrate

Co-administration of mycophenolate mofetil (MMF) with micafungin for injection did not alter the pharmacokinetics of MMF.

## **8 USE IN SPECIFIC POPULATIONS**

### **8.1 Pregnancy**

#### Risk Summary

Based on findings from animal studies, Micafungin for Injection may cause fetal harm when administered to a pregnant woman (*see Data*). There is insufficient human data on the use of micafungin for injection in pregnant women to inform a drug-associated risk of adverse developmental outcomes. In animal reproduction studies, intravenous administration of micafungin sodium to pregnant rabbits during organogenesis at doses four times the maximum recommended human dose resulted in visceral abnormalities and increased abortion (*see Data*). Advise pregnant women of the risk to the fetus.

The estimated background risk of major birth defects and miscarriage for the indicated populations is unknown. All pregnancies have a background risk of birth defect, loss, or other adverse outcomes. In the U.S. general population, the estimated background risk of major birth defects and miscarriage in clinically recognized pregnancies is 2 to 4% and 15 to 20%, respectively.

## Data

### *Animal Data*

In an embryo-fetal toxicity study in pregnant rabbits, intravenous administration of micafungin sodium during organogenesis (days 6 to 18 of gestation) resulted in fetal visceral abnormalities and abortion at 32 mg/kg, a dose equivalent to four times the recommended human dose based on body surface area comparisons. Visceral abnormalities included abnormal lobation of the lung, levocardia, retrocaval ureter, anomalous right subclavian artery, and dilatation of the ureter.

## **8.2 Lactation**

### Risk Summary

There are no data on the presence of micafungin in human milk, the effects on the breast-fed infant or the effects on milk production. Micafungin was present in the milk of lactating rats following intravenous administration. When a drug is present in animal milk, it is likely that the drug will be present in human milk. The developmental and health benefits of breastfeeding should be considered along with the mother's clinical need for Micafungin in Sodium Chloride Injection, and any potential adverse effects on the breast-fed child from Micafungin in Sodium Chloride Injection, or from the underlying maternal condition.

## **8.4 Pediatric Use**

Micafungin in Sodium Chloride Injection is indicated in pediatric patients for whom appropriate dosing with this formulation can be achieved. Because of the limitations of the available strengths and administration requirements (i.e., administration of fractional doses is not recommended) of Micafungin in Sodium Chloride Injection, and to avoid unintentional overdose, this product is not recommended for use if a dose of Micafungin in Sodium Chloride Injection that does not equal 50 mg, 100 mg, or 150 mg is required, and an alternative formulation of micafungin should be considered [see *Dosage and Administration* (2.3, 2.4)].

### Pediatric Patients 4 Months of Age and Older

The safety and effectiveness of micafungin for injection for the treatment of esophageal candidiasis, candidemia, acute disseminated candidiasis, *Candida* peritonitis and abscesses, esophageal candidiasis, and for prophylaxis of *Candida* infections in patients undergoing HSCT have been established in pediatric patients 4 months of age and older. Use of micafungin for these indications and in this age group is supported by evidence from adequate and well-controlled studies in adult and pediatric patients with additional pharmacokinetic and safety data in pediatric patients 4 months of age and older [see *Indications and Usage* (1), *Adverse Reactions* (6.1), *Clinical Pharmacology* (12.3), and *Clinical Studies* (14)].

### Pediatric Patients Younger than 4 Months of Age

*Treatment of Candidemia, Acute Disseminated Candidiasis, Candida Peritonitis and Abscesses* **Without** Meningoencephalitis and/or Ocular Dissemination in Pediatric Patients Younger Than 4 Months of Age

The safety and effectiveness of micafungin for injection for the treatment of candidemia, acute disseminated candidiasis, *Candida* peritonitis and abscesses **without**



meningoencephalitis and/or ocular dissemination at a dosage of 4 mg/kg once daily have been established in pediatric patients younger than 4 months of age. This use and dosage of micafungin for injection are supported by evidence from adequate and well-controlled studies in adult and pediatric patients 4 months of age and older with additional pharmacokinetic and safety data in pediatric patients younger than 4 months of age [see *Adverse Reactions* (6.1) and *Clinical Pharmacology* (12.3)].

*Treatment of Candidemia, Acute Disseminated Candidiasis, Candida Peritonitis and Abscesses **With** Meningoencephalitis and/or Ocular Dissemination in Pediatric Patients Younger Than 4 Months of Age*

The safety and effectiveness of micafungin for injection have ***not*** been established for the treatment of candidemia ***with*** meningoencephalitis and/or ocular dissemination in pediatric patients younger than 4 months of age.

In a rabbit model of hematogenous *Candida* meningoencephalitis (HCME) with *Candida albicans* (minimum inhibitory concentration of 0.125 mcg/mL), a decrease in mean fungal burden in central nervous system (CNS) compartments assessed as the average of combined fungal burden in the cerebrum, cerebellum, and spinal cord relative to untreated controls, was observed with increasing micafungin dosages administered once daily for 7 days. Data from the rabbit model suggest that a micafungin dose regimen of 4 mg/kg once daily is inadequate to treat meningoencephalitis and that a dose regimen of approximately 10 to 25 mg/kg once daily may be necessary to lower fungal burden in the CNS in pediatric patients younger than 4 months of age [see *Microbiology* (12.4)]. In this rabbit model, micafungin concentrations could not be reliably detected in cerebrospinal fluid (CSF). Due to limitations of the study design, the clinical significance of a decreased CNS fungal burden in the rabbit HCME model is uncertain.

A randomized controlled trial evaluated a micafungin for injection dose regimen of 10 mg/kg once daily in pediatric patients younger than 4 months of age with suspected or proven *Candida* meningoencephalitis. Fungal-free survival at 1 week after end of therapy was observed in 60% of micafungin for injection-treated vs. 70% of amphotericin B-treated patients, and all-cause mortality was 15% vs. 10%, respectively. However, because this study was terminated early and enrolled only 30 pediatric patients younger than 4 months of age (20 treated with micafungin for injection and 10 treated with amphotericin B) which was 13% of the planned enrollment for the study, no conclusions can be drawn regarding efficacy of micafungin for injection at this dose regimen.

In six uncontrolled, open-label studies, and a neonatal intensive care unit (ICU) medical records database, pediatric patients younger than 4 months of age with suspected *Candida* meningoencephalitis or disseminated candidemia received micafungin for injection at dose regimens ranging from 5 to 15 mg/kg once daily. Across the entire micafungin for injection development program, only 6 pediatric patients with proven *Candida* meningoencephalitis were treated with dosages of 2 mg/kg, 8 mg/kg and 10 mg/kg once daily. Micafungin was detected in the CSF of pediatric patients with suspected *Candida* meningoencephalitis. No conclusions regarding the efficacy of a particular dosage of micafungin for injection or the penetration of micafungin into the CSF can be drawn due to limitations of the data, including but not limited to, multiple confounding factors, variable study designs, and limited numbers of patients. No new safety signals were observed with the use of micafungin for injection at dosages of 5 to 15 mg/kg once daily in pediatric patients younger than 4 months of age, and there was

no discernible dose-response for adverse events.

Although the dosage for the treatment of candidemia with meningoencephalitis has not been established, antifungal activity in various CNS compartments in the rabbit HCME model and limited clinical trial data suggest that in patients younger than 4 months of age, dose regimens 10 mg/kg once daily or higher may be necessary for the treatment of candidemia with meningoencephalitis. Safety data from clinical studies for micafungin for injection at dose regimens of 10 to 15 mg/kg once daily in pediatric patients younger than 4 months of age did not reveal new safety signals.

#### *Treatment of Esophageal Candidiasis and Prophylaxis of Candida Infections in Patients Undergoing Hematopoietic Stem Cell Transplantation in Pediatric Patients Younger Than 4 Months of Age*

The safety and effectiveness of micafungin for injection in pediatric patients younger than 4 months of age have not been established for the:

- Treatment of esophageal candidiasis
- Prophylaxis of *Candida* infections in patients undergoing hematopoietic stem cell transplantation

### **8.5 Geriatric Use**

A total of 418 subjects in clinical studies of micafungin for injection were 65 years of age and older, and 124 subjects were 75 years of age and older. No overall differences in safety and effectiveness were observed between these subjects and younger subjects. Other reported clinical experience has not identified differences in responses between the elderly and younger patients, but greater sensitivity of some older individuals cannot be ruled out. The exposure and disposition of a 50 mg micafungin for injection dose administered as a single 1-hour infusion to 10 healthy subjects aged 66 to 78 years were not significantly different from those in 10 healthy subjects aged 20 to 24 years. No dose adjustment is necessary for the elderly.

Each 50 mg/50 mL Galaxy container of Micafungin in Sodium Chloride Injection contains 200 mg of sodium, each 100 mg/100 mL Galaxy container of Micafungin in Sodium Chloride Injection contains 400 mg of sodium, and each 150 mg/150 mL Galaxy container of Micafungin in Sodium Chloride Injection contains 600 mg of sodium. The geriatric population may respond with a blunted natriuresis to salt loading. This may be clinically important with regard to such diseases as congestive heart failure and other conditions requiring restricted sodium intake [see *Warnings and Precautions* (5.6)].

### **8.6 Use in Patients with Renal Impairment**

Micafungin in Sodium Chloride Injection does not require dose adjustment in patients with renal impairment. Supplementary dosing should not be required following hemodialysis [see *Clinical Pharmacology* (12.3)].

### **8.7 Use in Patients with Hepatic Impairment**

Dose adjustment of Micafungin in Sodium Chloride Injection is not required in patients with mild, moderate, or severe hepatic impairment [see *Clinical Pharmacology* (12.3)].

### **8.8 Race and Gender**

No dose adjustment of Micafungin in Sodium Chloride Injection is required based on gender or race. After 14 daily doses of 150 mg to healthy subjects, micafungin AUC in women was greater by approximately 23% compared with men, due to smaller body weight. No notable differences among white, black, and Hispanic subjects were seen. The micafungin AUC was greater by 19% in Japanese subjects compared to blacks, due to smaller body weight.

## **9 DRUG ABUSE AND DEPENDENCE**

There has been no evidence of either psychological or physical dependence or withdrawal or rebound effects with micafungin for injection.

## **10 OVERDOSAGE**

Micafungin is highly protein bound and, therefore, is not dialyzable. No cases of micafungin for injection overdose have been reported. Repeated daily doses up to 8 mg/kg (maximum total dose of 896 mg) in adult patients, up to 6 mg/kg in pediatric patients 4 months of age and older, and up to 15 mg/kg in pediatric patients younger than 4 months of age have been administered in clinical trials with no reported dose-limiting toxicity [see *Adverse Reactions (6.1)* and *Use in Specific Populations (8.4)*].

## **11 DESCRIPTION**

Micafungin in Sodium Chloride Injection is a premixed, iso-osmotic, sterile, nonpyrogenic solution for intravenous (IV) infusion that contains micafungin sodium. Micafungin sodium is a semisynthetic lipopeptide (echinocandin).

Micafungin in Sodium Chloride Injection is supplied as a refrigerated 50 mL, 100 mL, or 150 mL single-dose GALAXY container in the following presentations:

50 mg/50 mL (1 mg/mL): containing 50 mg of micafungin (equivalent to 50.87 mg of micafungin sodium); 36 mg citric acid, anhydrous; 450 mg sodium chloride; 92 mg sodium citrate dihydrate;

100 mg/100 mL (1 mg/mL): containing 100 mg of micafungin (equivalent to 101.73 mg of micafungin sodium); 72 mg citric acid, anhydrous; 900 mg sodium chloride; 184 mg sodium citrate dihydrate;

150 mg/150 mL (1 mg/mL): containing 150 mg of micafungin (equivalent to 152.60 mg of micafungin sodium); 108 mg citric acid, anhydrous; 1350 mg sodium chloride; 276 mg sodium citrate dihydrate.

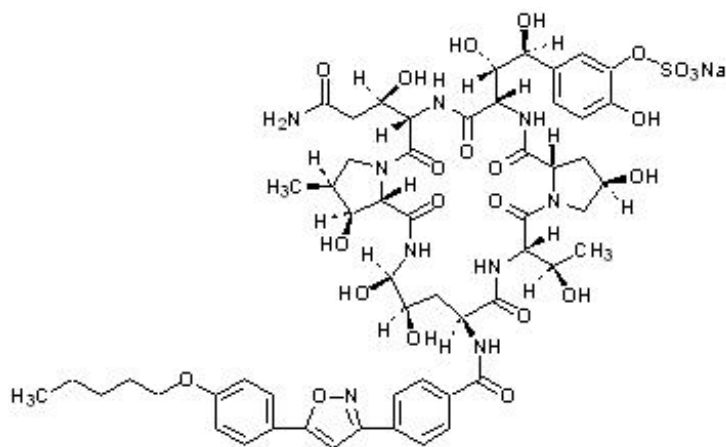
- Each 50 mg/50 mL Galaxy container of Micafungin in Sodium Chloride Injection contains 200 mg of sodium.
- Each 100 mg/100 mL Galaxy container of Micafungin in Sodium Chloride Injection contains 400 mg of sodium.
- Each 150 mg/150 mL Galaxy container of Micafungin in Sodium Chloride Injection contains 600 mg of sodium.

The premixed solution is clear and colorless, with a pH range of 4.5 to 5.1.

Micafungin sodium is chemically designated as:

Pneumocandin A0, 1-[(4*R*,5*R*)-4,5-dihydroxy-*N*<sup>2</sup>-[4-[5-[4-(pentyloxy) phenyl]-3-isoxazolyl]benzoyl]-L-ornithine]-4-[(4*S*)-4-hydroxy-4-[4-hydroxy-3-(sulfooxy)phenyl]-L-threonine]-, monosodium salt.

The chemical structure of micafungin sodium is:



The empirical/molecular formula is C<sub>56</sub>H<sub>70</sub>N<sub>9</sub>NaO<sub>23</sub>S and the formula weight is 1292.26.

Micafungin sodium is a light-sensitive, hygroscopic white powder that is freely soluble in water, isotonic sodium chloride solution, N,N-dimethylformamide and dimethylsulfoxide, slightly soluble in methyl alcohol, and practically insoluble in acetonitrile, ethyl alcohol (95%), acetone, diethyl ether and n-hexane.

## 12 CLINICAL PHARMACOLOGY

### 12.1 Mechanism of Action

Micafungin is a member of the echinocandin class of antifungal agents [see *Microbiology* (12.4)].

### 12.2 Pharmacodynamics

The pharmacodynamics of micafungin related to hematogenous *Candida* meningoencephalitis are described in other sections of the prescribing information [see *Use in Specific Populations* (8.4) and *Microbiology* (12.4)].

### 12.3 Pharmacokinetics

The pharmacokinetics of micafungin were determined in healthy subjects, hematopoietic stem cell transplant recipients, and patients with esophageal candidiasis up to a maximum daily dose of 8 mg/kg body weight.

The relationship of area under the concentration-time curve (AUC) to micafungin dose was linear over the daily dose range of 50 mg to 150 mg and 3 mg/kg to 8 mg/kg body weight. Typically, 85% of the steady-state concentration is achieved after three daily micafungin for injection doses.

Steady-state pharmacokinetic parameters in relevant patient populations after repeated daily administration are presented in Table 7.

**Table 7. Pharmacokinetic Parameters of Micafungin in Adult Patients**

| Population                            | n  | Dose (mg)     | Pharmacokinetic Parameters (Mean ± Standard Deviation) |   |                      |                |
|---------------------------------------|----|---------------|--|---|----------------------|----------------|
|                                       |    |               | C <sub>max</sub> (mcg/mL)                              | AUC <sub>0-24</sub> <sup>*</sup> (mcg h/mL) | t <sub>1/2</sub> (h) | Cl (mL/min/kg) |
| Patients with IC <sup>†</sup> [Day 1] | 20 | 100           | 5.7 ± 2.2  | 83 ± 51                                     | 14.5 ± 7.0           | 0.359 ± 0.179  |
| [Steady-State]                        | 20 | 100           | 10.1 ± 4.4   | 97 ± 29                                     | 13.4 ± 2.0           | 0.298 ± 0.115  |
| HIV <sup>‡</sup> - Positive           | 20 | 50            | 4.1 ± 1.4  | 36 ± 9                                      | 14.9 ± 4.3           | 0.321 ± 0.098  |
| Patients with EC <sup>§</sup> [Day 1] | 20 | 100           | 8.0 ± 2.4  | 108 ± 31                                    | 13.8 ± 3.0           | 0.327 ± 0.093  |
|                                       | 14 | 150           | 11.6 ± 3.1   | 151 ± 45                                    | 14.1 ± 2.6           | 0.340 ± 0.092  |
| [Day 14 or 21]                        | 20 | 50            | 5.1 ± 1.0  | 54 ± 13                                     | 15.6 ± 2.8           | 0.300 ± 0.063  |
|                                       | 20 | 100           | 10.1 ± 2.6   | 115 ± 25                                    | 16.9 ± 4.4           | 0.301 ± 0.086  |
|                                       | 14 | 150           | 16.4 ± 6.5   | 167 ± 40                                    | 15.2 ± 2.2           | 0.297 ± 0.081  |
| HSCT <sup>¶</sup> Recipients [Day 7]  |    | <i>per kg</i> |  |   |                      |                |
|                                       | 8  | 3             | 21.1 ± 2.84  | 234 ± 34                                    | 14.0 ± 1.4           | 0.214 ± 0.031  |
|                                       | 10 | 4             | 29.2 ± 6.2   | 339 ± 72                                    | 14.2 ± 3.2           | 0.204 ± 0.036  |
|                                       | 8  | 6             | 38.4 ± 6.9   | 479 ± 157                                   | 14.9 ± 2.6           | 0.224 ± 0.064  |
|                                       | 8  | 8             | 60.8 ± 26.9  | 663 ± 212                                   | 17.2 ± 2.3           | 0.223 ± 0.081  |

\* AUC<sub>0-infinity</sub> is presented for Day 1; AUC<sub>0-24</sub> is presented for steady-state.

† candidemia or other *Candida* infections.

‡ human immunodeficiency virus.

§ esophageal candidiasis.

¶ hematopoietic stem cell transplant.

### Distribution

The mean ± standard deviation volume of distribution of micafungin at terminal phase was 0.39 ± 0.11 L/kg body weight when determined in adult patients with esophageal candidiasis at the dose range of 50 mg to 150 mg.

Micafungin is highly (greater than 99%) protein bound *in vitro*, independent of plasma concentrations over the range of 10 to 100 mcg/mL. The primary binding protein is albumin; however, micafungin, at therapeutically relevant concentrations, does not competitively displace bilirubin binding to albumin. Micafungin also binds to a lesser extent to α1-acid-glycoprotein.

Micafungin is neither a substrate nor an inhibitor of P-glycoprotein.

### Elimination

#### *Metabolism*

Micafungin is metabolized to M-1 (catechol form) by arylsulfatase, with further metabolism to M-2 (methoxy form) by catechol-O-methyltransferase. M-5 is formed by hydroxylation at the side chain (ω-1 position) of micafungin catalyzed by cytochrome P450 (CYP) isozymes. Even though micafungin is a substrate for and a weak inhibitor of CYP3A *in vitro*, hydroxylation by CYP3A is not a major pathway for micafungin metabolism *in vivo*. Micafungin is neither a P-glycoprotein substrate nor inhibitor *in vitro*.

In four healthy volunteer studies, the ratio of metabolite to parent exposure (AUC) at a dose of 150 mg/day was 6% for M-1, 1% for M-2, and 6% for M-5. In patients with esophageal candidiasis, the ratio of metabolite to parent exposure (AUC) at a dose of 150 mg/day was 11% for M-1, 2% for M-2, and 12% for M-5.

### *Excretion*

The excretion of radioactivity following a single intravenous dose of  $^{14}\text{C}$ -micafungin sodium for injection (25 mg) was evaluated in healthy volunteers. At 28 days after administration, mean urinary and fecal recovery of total radioactivity accounted for 82.5% (76.4% to 87.9%) of the administered dose. Fecal excretion is the major route of elimination (total radioactivity at 28 days was 71% of the administered dose).

### Specific Populations

#### *Pediatric Patients*

#### *Pediatric Patients 4 Months of Age and Older*

Micafungin pharmacokinetics in 229 pediatric patients 4 months through 16 years of age were characterized using population pharmacokinetics. Micafungin exposure was dose proportional across the dose and age range studied.

**Table 8. Summary (Mean +/- Standard Deviation) of Micafungin Pharmacokinetics in Pediatric Patients 4 Months of Age and Older (Steady-State)**

| Body weight group  | N   | Dose*<br>mg/kg | C <sub>max,ss</sub> <sup>†</sup><br>(mcg/mL) | AUC <sub>ss</sub> <sup>†</sup><br>(mcg h/mL) | t <sub>1/2</sub> <sup>‡</sup><br>(h) | CL <sup>‡</sup><br>mL/min/kg |
|--------------------|-----|----------------|--|--|--------------------------------------|------------------------------|
| 30 kg or less      | 149 | 1.0            | 7.1 +/- 4.7                                  | 55 +/- 16                                    | 12.5 +/- 4.6                         | 0.328 +/- 0.091              |
|                    |     | 2.0            | 14.2 +/- 9.3                                 | 109 +/- 31                                   |                                      |                              |
|                    |     | 3.0            | 21.3 +/- 14.0                                | 164 +/- 47                                   |                                      |                              |
| Greater than 30 kg | 80  | 1.0            | 8.7 +/- 5.6                                  | 67 +/- 17                                    | 13.6 +/- 8.8                         | 0.241 +/- 0.061              |
|                    |     | 2.0            | 17.5 +/- 11.2                                | 134 +/- 33                                   |                                      |                              |
|                    |     | 2.5            | 23.0 +/- 14.5                                | 176 +/- 42                                   |                                      |                              |

\* Or the equivalent if receiving the adult dose (50, 100, or 150 mg).

† Derived from simulations from the population PK model.

‡ Derived from the population PK model.

#### *Pediatric Patients Younger than 4 Months of Age*

Micafungin pharmacokinetic data in 103 pediatric patients less than 4 months of age were assessed using population pharmacokinetics. Predicted micafungin AUC estimates were dose proportional across the dose regimens and age ranges studied. The body weight-normalized micafungin clearance in pediatric patients less than 4 months of age is higher than the body weight-normalized micafungin clearance in older pediatric patients greater than 4 months of age and adults. Administration of 4 mg/kg once daily micafungin to pediatric patients less than 4 months of age produces a mean (SD) steady-state AUC of 131 (50) mcg·h/mL, which is comparable to the steady-state AUC in

pediatric patients 4 months of age and older administered micafungin 2 mg/kg/day and adults administered 100 mg once daily.

#### *Patients with Renal Impairment*

Micafungin in Sodium Chloride Injection does not require dose adjustment in patients with renal impairment. A single 1-hour infusion of 100 mg micafungin for injection was administered to 9 adult subjects with severe renal impairment (creatinine clearance less than 30 mL/min) and to 9 age-, gender-, and weight-matched subjects with normal renal function (creatinine clearance greater than 80 mL/min). The maximum concentration ( $C_{\max}$ ) and AUC were not significantly altered by severe renal impairment.

Since micafungin is highly protein bound, it is not dialyzable. Supplementary dosing should not be required following hemodialysis.

#### *Patients with Hepatic Impairment*

- A single 1-hour infusion of 100 mg micafungin for injection was administered to 8 adult subjects with moderate hepatic impairment (Child-Pugh score 7 to 9) and 8 age-, gender-, and weight-matched subjects with normal hepatic function. The  $C_{\max}$  and AUC values of micafungin were lower by approximately 22% in subjects with moderate hepatic impairment compared to normal subjects. This difference in micafungin exposure does not require dose adjustment of Micafungin in Sodium Chloride Injection in patients with moderate hepatic impairment.
- A single 1-hour infusion of 100 mg micafungin for injection was administered to 8 adult subjects with severe hepatic impairment (Child-Pugh score 10 to 12) and 8 age-, gender-, ethnic- and weight-matched subjects with normal hepatic function. The mean  $C_{\max}$  and AUC values of micafungin were lower by approximately 30% in subjects with severe hepatic impairment compared to normal subjects. The mean  $C_{\max}$  and AUC values of M-5 metabolite were approximately 2.3-fold higher in subjects with severe hepatic impairment compared to normal subjects; however, this exposure (parent and metabolite) was comparable to that in patients with systemic *Candida* infection. Therefore, no Micafungin in Sodium Chloride Injection dose adjustment is necessary in patients with severe hepatic impairment.

## **12.4 Microbiology**

### Mechanism of Action

Micafungin inhibits the synthesis of 1,3-beta-D-glucan, an essential component of fungal cell walls, which is not present in mammalian cells.

### Activity in Animal Models of Candidiasis

Activity of micafungin has been demonstrated in both mucosal and disseminated murine and rabbit models of candidiasis. Micafungin administered to immunocompetent or immunosuppressed mice or rabbits with disseminated candidiasis prolonged survival (mice) and/or decreased the fungal burden in different organs including brain in a dose-dependent manner (mice and rabbits). Overall, antifungal activity of micafungin was demonstrated in the brain and eye tissues of nonneutropenic rabbits with HCME infected with a micafungin-sensitive strain of *C. albicans*; however, the activity varied in different central nervous system and ocular compartments. In the cerebrum, culture negativity was achieved at a micafungin dose regimen of 32 mg/kg once daily for 7 days; whereas, in spinal cord, vitreous humor, and choroid, culture negativity was achieved at

micafungin dose regimens of 24 to 32 mg/kg once daily. Compared to untreated animals, micafungin dose regimens between 8 and 24 mg/kg once daily reduced fungal burden in the cerebrum and cerebellum. When cerebrum, cerebellum and spinal cord data were combined, a decrease in fungal burden relative to untreated controls was evident at micafungin dose regimens between 16 and 32 mg/kg once daily [see *Use in Specific Populations* (8.4)].

### Resistance

There have been reports of clinical failures in patients receiving micafungin for injection therapy due to the development of drug resistance. Some of these reports have identified specific mutations in the *FKS* protein component of the glucan synthase enzyme that are associated with higher MICs and breakthrough infection.

### Antimicrobial Activity

Micafungin has been shown to be active against most isolates of the following *Candida* species, both *in vitro* and in clinical infections [see *Indications and Usage* (1)]:

*Candida albicans*

*Candida glabrata*

*Candida guilliermondii*

*Candida krusei*

*Candida parapsilosis*

*Candida tropicalis*

### Susceptibility Testing

For specific information regarding susceptibility test interpretive criteria and associated test methods and quality control standards recognized by FDA for this drug, please see: <https://www.fda.gov/STIC>.

## **13 NONCLINICAL TOXICOLOGY**

### **13.1 Carcinogenesis, Mutagenesis, Impairment of Fertility**

Hepatic carcinomas and adenomas were observed in a 6-month intravenous toxicology study with an 18-month recovery period of micafungin sodium in rats designed to assess the reversibility of hepatocellular lesions.

Rats administered micafungin sodium for 3 months at 32 mg/kg/day (corresponding to 8 times the highest recommended human dose [150 mg/day], based on AUC comparisons), exhibited colored patches/zones, multinucleated hepatocytes and altered hepatocellular foci after 1 or 3-month recovery periods, and adenomas were observed after a 21-month recovery period. Rats administered micafungin sodium at the same dose for 6 months exhibited adenomas after a 12-month recovery period; after an 18-month recovery period, an increased incidence of adenomas was observed and, additionally, carcinomas were detected. A lower dose of micafungin sodium (equivalent to 5 times the human AUC) in the 6-month rat study resulted in a lower incidence of adenomas and carcinomas following 18 months recovery. The duration of micafungin dosing in these rat studies (3 or 6 months) exceeds the usual duration of Micafungin in



Sodium Chloride Injection dosing in patients, which is typically less than 1 month for treatment of esophageal candidiasis, but dosing may exceed 1 month for *Candida* prophylaxis.

Although the increase in carcinomas in the 6-month rat study did not reach statistical significance, the persistence of altered hepatocellular foci subsequent to micafungin for injection dosing, and the presence of adenomas and carcinomas in the recovery periods suggest a causal relationship between micafungin sodium, altered hepatocellular foci, and hepatic neoplasms. Whole-life carcinogenicity studies of micafungin for injection in animals have not been conducted, and it is not known whether the hepatic neoplasms observed in treated rats also occur in other species, or if there is a dose threshold for this effect.

Micafungin sodium was not mutagenic or clastogenic when evaluated in a standard battery of *in vitro* and *in vivo* tests (i.e., bacterial reversion - *S. typhimurium*, *E. coli*; chromosomal aberration; intravenous mouse micronucleus).

Male rats treated intravenously with micafungin sodium for 9 weeks showed vacuolation of the epididymal ductal epithelial cells at or above 10 mg/kg (about 0.6 times the recommended clinical dose for esophageal candidiasis, based on body surface area comparisons). Higher doses (about twice the recommended clinical dose, based on body surface area comparisons) resulted in higher epididymis weights and reduced numbers of sperm cells. In a 39-week intravenous study in dogs, seminiferous tubular atrophy and decreased sperm in the epididymis were observed at 10 and 32 mg/kg, doses equal to about 2 and 7 times the recommended clinical dose, based on body surface area comparisons. There was no impairment of fertility in animal studies with micafungin sodium.

### **13.2 Animal Toxicology and/or Pharmacology**

High doses of micafungin sodium (5 to 8 times the highest recommended human dose, based on AUC comparisons) have been associated with irreversible changes to the liver when administered for 3 or 6 months, and these changes may be indicative of pre-malignant processes [see *Nonclinical Toxicology* (13.1)].

## **14 CLINICAL STUDIES**

### **14.1 Treatment of Candidemia and Other *Candida* Infections in Adult and Pediatric Patients 4 Months of Age and Older**

Two dose levels of micafungin for injection were evaluated in a randomized, double-blind study to determine the efficacy and safety versus caspofungin in patients with invasive candidiasis and candidemia. Patients were randomized to receive once daily intravenous infusions (IV) of micafungin for injection, either 100 mg/day or 150 mg/day or caspofungin (70 mg loading dose followed by 50 mg maintenance dose). Patients in both study arms were permitted to switch to oral fluconazole after at least 10 days of intravenous therapy, provided they were non-neutropenic, had improvement or resolution of clinical signs and symptoms, had a *Candida* isolate which was susceptible to fluconazole, and had documentation of 2 negative cultures drawn at least 24 hours apart. Patients were stratified by APACHE II score (20 or less or greater than 20) and by geographic region. Patients with *Candida* endocarditis were excluded from this analysis. Outcome was assessed by overall treatment success based on clinical (complete

resolution or improvement in attributable signs and symptoms and radiographic abnormalities of the *Candida* infection and no additional antifungal therapy) and mycological (eradication or presumed eradication) response at the end of IV therapy. Deaths that occurred during IV study drug therapy were treated as failures.

In this study, 111/578 (19.2%) of the patients had baseline APACHE II scores of greater than 20, and 50/578 (8.7%) were neutropenic at baseline (absolute neutrophil count less than 500 cells/mm<sup>3</sup>). Outcome, relapse and mortality data are shown for the recommended dose of micafungin for injection (100 mg/day) and caspofungin in Table 9.

**Table 9. Efficacy Analysis: Treatment Success in Patients in Study 03-0-192 with Candidemia and Other Candida Infections**

|   | <b>Micafungin for Injection<br/>100 mg/day<br/>n (%)<br/>% treatment difference<br/>(95% CI)</b> | <b>Caspofungin*<br/>70/50 mg/day<br/>n (%)</b> |
|---|--|--|
| <b>Treatment Success at End of IV Therapy*</b>          | 135/191 (70.7)<br>7.4<br>(-2.0, 16.3)  | 119/188 (63.3)                                 |
| <b>Success in Patients with Neutropenia at Baseline</b> | 14/22 (63.6)   | 5/11 (45.5)                                    |
| <b>Success by Site of Infection</b>                     |  |  |
| <b>Candidemia</b>                                       | 116/163 (71.2)   | 103/161 (64)                                   |
| <b>Abscess</b>  | 4/5 (80)   | 5/9 (55.6)                                     |
| <b>Acute Disseminated†</b>                              | 6/13 (46.2)  | 5/9 (55.6)                                     |
| Endophthalmitis   | 1/3  | 1/1  |
| Chorioretinitis   | 0/3  | 0  |
| Skin  | 1/1  | 0  |
| Kidney  | 2/2  | 1/1  |
| Pancreas  | 1/1  | 0  |
| Peritoneum  | 1/1  | 0  |
| Lung/Skin   | 0/1  | 0  |
| Lung/Spleen   | 0/1  | 0  |
| Liver   | 0  | 0/2  |
| Intraabdominal abscess                                  | 0  | 3/5  |
| <b>Chronic Disseminated</b>                             | 0/1  | 0  |
| <b>Peritonitis</b>                                      | 4/6 (66.7)   | 2/5 (40)                                       |
| <b>Success by Organism‡</b>                             |  |  |
| <i>C. albicans</i>                                      | 57/81 (70.4)   | 45/73 (61.6)                                   |
| <i>C. glabrata</i>                                      | 16/23 (69.6)   | 19/31 (61.3)                                   |
| <i>C. tropicalis</i>                                    | 17/27 (63)   | 22/29 (75.9)                                   |
| <i>C. parapsilosis</i>                                  | 21/28 (75)   | 22/39 (56.4)                                   |
| <i>C. krusei</i>  | 5/8 (62.5)   | 2/3 (66.7)                                     |
| <i>C. guilliermondii</i>                                | 1/2  | 0/1  |
| <i>C. lusitaniae</i>                                    | 2/3 (66.7)   | 2/2  |
| <b>Relapse through 6 Weeks§</b>                         |  |  |

|                                      |                    |                      |
|--------------------------------------|--------------------|----------------------|
| Overall                              | 49/135 (36.3)      | 44/119 (37)          |
| Culture-confirmed relapse            | 5                  | 4                    |
| Required systemic antifungal therapy | 11                 | 5                    |
| Died during follow-up                | 17                 | 16                   |
| Not assessed                         | 16                 | 19                   |
| <b>Overall study mortality</b>       | <b>58/200 (29)</b> | <b>51/193 (26.4)</b> |
| Mortality during IV therapy          | 28/200 (14)        | 27/193 (14)          |

\* 70 mg loading dose on day 1 followed by 50 mg/day thereafter (caspofungin).

† A patient may have had greater than 1 organ of dissemination.

‡ A patient may have had greater than 1 baseline infection species.

§ All patients who had a culture-confirmed relapse or required systemic antifungal therapy in the post-treatment period for a suspected or proven *Candida* infection. Also includes patients who died or were not assessed in follow-up.

In two cases of ophthalmic involvement assessed as failures in the above table due to missing evaluation at the end of IV treatment with micafungin for injection, therapeutic success was documented during protocol-defined oral fluconazole therapy.

## 14.2 Treatment of Esophageal Candidiasis in Adult and Pediatric Patients 4 Months of Age and Older

In two controlled trials involving 763 patients with esophageal candidiasis, 445 adults with endoscopically-proven candidiasis received micafungin for injection, and 318 received fluconazole for a median duration of 14 days (range 1 to 33 days).

Micafungin for injection was evaluated in a randomized, double-blind study which compared micafungin for injection 150 mg/day (n = 260) to intravenous fluconazole 200 mg/day (n = 258) in adults with endoscopically-proven esophageal candidiasis. Most patients in this study had HIV infection, with CD4 cell counts less than 100 cells/mm<sup>3</sup>. Outcome was assessed by endoscopy and by clinical response at the end of treatment. Endoscopic cure was defined as endoscopic grade 0, based on a scale of 0 to 3. Clinical cure was defined as complete resolution in clinical symptoms of esophageal candidiasis (dysphagia, odynophagia, and retrosternal pain). Overall therapeutic cure was defined as both clinical and endoscopic cure. Mycological eradication was determined by culture, and by histological or cytological evaluation of esophageal biopsy or brushings obtained endoscopically at the end of treatment. As shown in Table 10, endoscopic cure, clinical cure, overall therapeutic cure, and mycological eradication were comparable for patients in the micafungin for injection and fluconazole treatment groups.

**Table 10. Endoscopic, Clinical, and Mycological Outcomes for Esophageal Candidiasis at End-of-Treatment**

| <b>Treatment Outcome*</b> | <b>Micafungin for Injection<br/>150 mg/day<br/>n = 260</b> | <b>Fluconazole<br/>200 mg/day<br/>n = 258</b> | <b>% Difference<sup>†</sup><br/>(95% CI)</b> |
|---------------------------|--|---|--|
| Endoscopic Cure           | 228 (87.7%)  | 227 (88.0%)                                   | -0.3% (-5.9, +5.3)                           |
| Clinical Cure             | 239 (91.9%)  | 237 (91.9%)                                   | 0.06% (-4.6, +4.8)                           |
| Overall Therapeutic Cure  | 223 (85.8%)  | 220 (85.3%)                                   | 0.5% (-5.6, +6.6)                            |
| Mycological Eradication   | 141/190 (74.5%)  | 140/192 (72.5%)                               | -3.0% (-11.6,                                |

|  |                 |                 |       |
|--|-----------------|-----------------|-------|
|  | 141/189 (74.6%) | 149/192 (77.6%) | +5.6) |
|--|-----------------|-----------------|-------|

- \* Endoscopic and clinical outcome were measured in the modified intent-to-treat population, including all randomized patients who received 1 or more doses of study treatment. The mycological outcome was determined in the per protocol (evaluable) population, including patients with confirmed esophageal candidiasis who received at least 10 doses of study drug, and had no major protocol violations.
- † Calculated as micafungin for injection – fluconazole.

Most patients (96%) in this study had *C. albicans* isolated at baseline. The efficacy of micafungin for injection was evaluated in less than 10 patients with *Candida* species other than *C. albicans*, most of which were isolated concurrently with *C. albicans*. Relapse was assessed at 2 and 4 weeks post-treatment in patients with overall therapeutic cure at end of treatment. Relapse was defined as a recurrence of clinical symptoms or endoscopic lesions (endoscopic grade greater than 0). There was no statistically significant difference in relapse rates at either 2 weeks or through 4 weeks post-treatment for patients in the micafungin for injection and fluconazole treatment groups, as shown in Table 11.

**Table 11. Relapse of Esophageal Candidiasis at Week 2 and through Week 4 Post-Treatment in Patients with Overall Therapeutic Cure at the End of Treatment**

| Relapse                                 | Micafungin for Injection<br>150 mg/day<br>n = 223 | Fluconazole<br>200 mg/day<br>n = 220 | % Difference*<br>(95% CI) |
|---|---|--------------------------------------|---------------------------|
| Relapse† at Week 2                      | 40 (17.9%)  | 30 (13.6%)                           | 4.3% (-2.5, 11.1)         |
| Relapse† through Week 4<br>(cumulative) | 73 (32.7%)  | 62 (28.2%)                           | 4.6% (-4.0, 13.1)         |

- \* Calculated as micafungin for injection – fluconazole; N = number of patients with overall therapeutic cure (both clinical and endoscopic cure at end-of-treatment);
- † Relapse included patients who died or were lost to follow-up, and those who received systemic anti-fungal therapy in the post-treatment period.

In this study, 459 of 518 (88.6%) patients had oropharyngeal candidiasis in addition to esophageal candidiasis at baseline. At the end of treatment, 192/230 (83.5%) micafungin for injection-treated patients and 188/229 (82.1%) of fluconazole-treated patients experienced resolution of signs and symptoms of oropharyngeal candidiasis. Of these, 32.3% in the micafungin for injection group, and 18.1% in the fluconazole group (treatment difference = 14.2%; 95% confidence interval [5.6, 22.8]) had symptomatic relapse at 2 weeks post-treatment. Relapse included patients who died or were lost to follow-up, and those who received systemic antifungal therapy during the post-treatment period. Cumulative relapse at 4 weeks post-treatment was 52.1% in the micafungin for injection group and 39.4% in the fluconazole group (treatment difference 12.7%, 95% confidence interval [2.8, 22.7]).

### 14.3 Prophylaxis of *Candida* Infections in Hematopoietic Stem Cell Transplant Recipients

In a randomized, double-blind study, micafungin for injection (50 mg IV once daily) was

compared to fluconazole (400 mg IV once daily) in 882 [adult (791) and pediatric (91)] patients undergoing an autologous or syngeneic (46%) or allogeneic (54%) stem cell transplant. All pediatric patients, except 2 per group, received allogeneic transplants. The status of the patients' underlying malignancy at the time of randomization was: 365 (41%) patients with active disease, 326 (37%) patients in remission, and 195 (22%) patients in relapse. The more common baseline underlying diseases in the 476 allogeneic transplant recipients were: chronic myelogenous leukemia (22%), acute myelogenous leukemia (21%), acute lymphocytic leukemia (13%), and non-Hodgkin's lymphoma (13%). In the 404 autologous and syngeneic transplant recipients the more common baseline underlying diseases were: multiple myeloma (37.1%), non-Hodgkin's lymphoma (36.4%), and Hodgkin's disease (15.6%). During the study, 198 of 882 (22.4%) transplant recipients had proven graft-versus-host disease; and 475 of 882 (53.9%) recipients received immunosuppressive medications for treatment or prophylaxis of graft-versus-host disease.

Study drug was continued until the patient had neutrophil recovery to an absolute neutrophil count (ANC) of 500 cells/mm<sup>3</sup> or greater or up to a maximum of 42 days after transplant. The average duration of drug administration was 18 days (range 1 to 51 days). Duration of therapy was slightly longer in the pediatric patients who received micafungin for injection (median duration 22 days) compared to the adult patients who received micafungin for injection (median duration 18 days).

Successful prophylaxis was defined as the absence of a proven, probable, or suspected systemic fungal infection through the end of therapy (usually 18 days), and the absence of a proven or probable systemic fungal infection through the end of the 4-week post-therapy period. A suspected systemic fungal infection was diagnosed in patients with neutropenia (ANC less than 500 cells/mm<sup>3</sup>); persistent or recurrent fever (while ANC less than 500 cells/mm<sup>3</sup>) of no known etiology; and failure to respond to at least 96 hours of broad spectrum antibacterial therapy. A persistent fever was defined as four consecutive days of fever greater than 38°C. A recurrent fever was defined as having at least one day with temperatures 38.5°C or higher after having at least one prior temperature higher than 38°C; or having two days of temperatures higher than 38°C after having at least one prior temperature higher than 38°C. Transplant recipients who died or were lost to follow-up during the study were considered failures of prophylactic therapy.

Successful prophylaxis was documented in 80.7% of adult and pediatric micafungin for injection recipients, and in 73.7% of adult and pediatric patients who received fluconazole (7.0% difference [95% CI = 1.5, 12.5]), as shown in Table 12, along with other study endpoints. The use of systemic antifungal therapy post-treatment was 42% in both groups.

The number of proven breakthrough *Candida* infections was 4 in the micafungin for injection and 2 in the fluconazole group.

The efficacy of micafungin for injection against infections caused by fungi other than *Candida* has not been established.

**Table 12. Results from Clinical Study of Prophylaxis of *Candida* Infections in Hematopoietic Stem Cell Transplant Recipients**

| Outcome of Prophylaxis | Micafungin for Injection | Fluconazole |
|------------------------|--------------------------|-------------|
|------------------------|--------------------------|-------------|

|  | <b>50 mg/day<br/>(n = 425)</b> | <b>400 mg/day<br/>(n = 457)</b> |
|--|--------------------------------|---------------------------------|
| Success*   | 343 (80.7%)                    | 337 (73.7%)                     |
| Failure:   | 82 (19.3%)                     | 120 (26.3%)                     |
| All Deaths†  | 18 (4.2%)                      | 26 (5.7%)                       |
| Proven/probable fungal infection prior to death            | 1 (0.2%)                       | 3 (0.7%)                        |
| Proven/probable fungal infection (not resulting in death)† | 6 (1.4%)                       | 8 (1.8%)                        |
| Suspected fungal infection‡                                | 53 (12.5%)                     | 83 (18.2%)                      |
| Lost to follow-up  | 5 (1.2%)                       | 3 (0.7%)                        |

\* Difference (micafungin for injection - fluconazole): +7.0% [95% CI=1.5, 12.5].

† Through end-of-study (4 weeks post-therapy).

‡ Through end-of-therapy.

## 16 HOW SUPPLIED/STORAGE AND HANDLING

### How Supplied

Micafungin in Sodium Chloride Injection is supplied as a clear and colorless refrigerated, premixed, iso-osmotic, sterile, nonpyrogenic solution for intravenous infusion, and is available in the following packaging configurations:

| <b>Code</b> | <b>NDC Multiple<br/>Cartons</b> | <b>NDC<br/>Individual<br/>Carton</b> | <b>Size</b> | <b>Number of Containers/Carton</b>   |
|-------------|---------------------------------|--------------------------------------|-------------|--|
| 2G3434      | NDC 0338-9051-12                | NDC 0338-9051-01                     | 50 mL       | 12 individually packaged 50 mg/50 mL (1 mg/mL) single-dose Galaxy containers   |
| 2G3435      | NDC 0338-9053-12                | NDC 0338-9053-01                     | 100 mL      | 12 individually packaged 100 mg/100 mL (1 mg/mL) single-dose Galaxy containers |
| 2G3433      | NDC 0338-9055-10                | NDC 0338-9055-01                     | 150 mL      | 10 individually packaged 150 mg/150 mL (1 mg/mL) single-dose Galaxy containers |

### Storage and Handling

Store Micafungin in Sodium Chloride Injection in the refrigerator at 2°C to 8°C (36°F to 46°F) in the original carton to protect from light. Do not use after the expiration date printed on the carton and container label.

If needed, Micafungin in Sodium Chloride Injection may be stored at room temperature 20°C to 25°C (68°F to 77°F) for up to 30 days in the original carton to protect from light. Once stored at room temperature, do not place back in the refrigerator. Discard Micafungin in Sodium Chloride Injection after 30 days if stored at room temperature.

Do not freeze and do not use Micafungin in Sodium Chloride Injection if it has been frozen.

## 17 PATIENT COUNSELING INFORMATION

### Hypersensitivity

Inform patients about the serious adverse effects of Micafungin in Sodium Chloride Injection including hypersensitivity reactions, e.g., anaphylaxis and anaphylactoid reactions including shock.

### Hepatic

Inform patients about the serious adverse effects of Micafungin in Sodium Chloride Injection including hepatic effects, e.g., abnormal liver tests, hepatic impairment, hepatitis or worsening hepatic failure.

### Hematologic

Inform patients about the serious adverse effects of Micafungin in Sodium Chloride Injection including hematological effects, e.g., acute intravascular hemolysis, hemolytic anemia and hemoglobinuria.

### Renal

Inform patients about the serious adverse effects of Micafungin in Sodium Chloride Injection including renal effects, e.g., elevations in BUN and creatinine, renal impairment or acute renal failure.

### Embryo-Fetal Toxicity

Advise pregnant women and females of reproductive potential of the potential risk of Micafungin in Sodium Chloride Injection to a fetus. Advise females to inform their healthcare provider of a known or suspected pregnancy.

### Concomitant Medications

Instruct patients to inform their healthcare provider of any other medications they are currently taking with Micafungin in Sodium Chloride Injection, including over-the-counter medications.

### High Sodium Load

Advise patients to inform their healthcare provider if they are on a salt-restricted diet or have congestive heart failure as increased blood sodium can occur in people who receive Micafungin in Sodium Chloride Injection [*see Warnings and Precautions (5.6)*].

### ***Baxter Logo***

Manufactured by:

Baxter Healthcare Corporation

Deerfield, IL 60015 USA

Product of USA

Baxter and Galaxy are registered trademarks of Baxter International Inc.

07-19-06-083

## **PACKAGE/LABEL PRINCIPAL DISPLAY PANEL**

NDC 0338-9051-01

# Micafungin

in 0.9% Sodium Chloride Injection

50 mg / 50 mL (1 mg / mL)

**50 mg  
TOTAL**

50 mL Single-Dose GALAXY container

Discard unused portion

**Rx only**

**Sterile Nonpyrogenic**

**For Intravenous Infusion Only**

Cautions: Do not add supplemental medication or additives.

Must not be used in series connections. Check for minute leaks and solution clarity.

Each 50 mL bag contains: 50 mg of Micafungin (equivalent to 50.87 mg of Micafungin Sodium); 36 mg Citric Acid, Anhydrous; 450 mg Sodium Chloride; 92 mg Sodium Citrate, Dihydrate; and Water for Injection.

Dosage: See prescribing information.

**Store refrigerated at 2°C to 8°C (36°F to 46°F) in the original carton to protect from light. Do Not Freeze.**

If needed, may store at room temperature up to 25°C (77°F) up to 30 days in the original carton. Discard after 30 days if stored at room temperature.

***Baxter***

**Code 2G3434**

PL 2501 Plastic

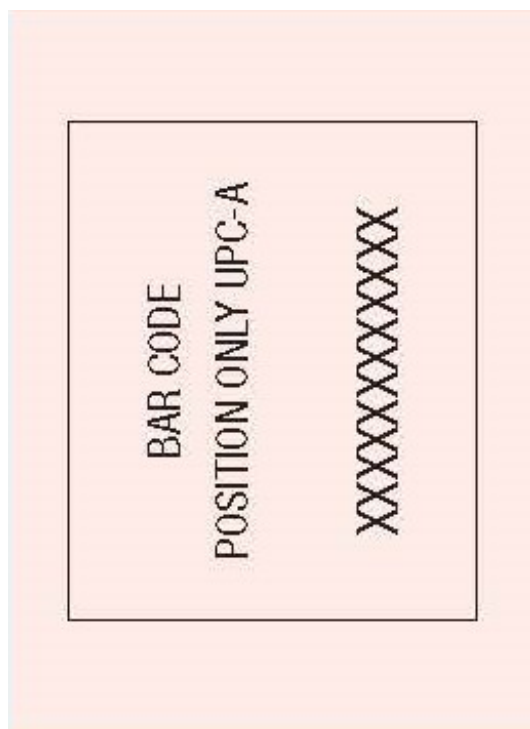
Baxter and Galaxy are registered trademarks of Baxter International Inc.

Product of USA

**Baxter Healthcare Corporation**, Deerfield, IL 60015 USA

07-34-00-1662





**Container Label**

NDC 0338-9051-01

**Micafungin  
in 0.9% Sodium Chloride Injection  
50 mg / 50 mL (1 mg / mL)**

**50 mg  
TOTAL**

**50 mL Single-Dose GALAXY container  
Discard unused portion  
For Intravenous Infusion Only**

**Rx only  
Sterile Nonpyrogenic**

Cautions: Do not add supplemental medication or additives.  
Must not be used in series connections. Check for minute leaks and solution clarity.

Each 50 mL bag contains: 50 mg of Micafungin Sodium (equivalent to 50.87 mg of Micafungin Sodium); 36 mg Citric Acid, Anhydrous; 450 mg Sodium Chloride, 92 mg Sodium Citrate, Dihydrate; and Water for Injection.

Dosage: See prescribing information.

**Store refrigerated at 2°C to 8°C (36°F to 46°F) in the original carton to protect from light. Do Not Freeze.**

If needed, may store at room temperature up to 25°C (77°F) up to 30 days in the original carton. Discard after 30 days if stored at room temperature.

***Baxter Logo***

Baxter and Galaxy are registered trademarks of Baxter International Inc.  
**Baxter Healthcare Corporation**, Deerfield, IL 60015 USA

**Code 2G3434**

PL 2501 Plastic

Product of USA

07-34-00-1662

BAR CODE

POSITION ONLY UPCA-A

XXXXXXXXXXXXX

NDC 0338-9053-01

# Micafungin

in 0.9% Sodium Chloride Injection

100 mg / 100 mL (1 mg / mL)

100 mg  
TOTAL

100 mL Single-Dose GALAXY container

Rx only

Discard unused portion

Sterile Nonpyrogenic

**For Intravenous Infusion Only**

Cautions: Do not add supplemental medication or additives.  
Must not be used in series connections. Check for minute leaks  
and solution clarity.

Each 100 mL bag contains: 100 mg of Micafungin (equivalent  
to 101.73 mg of Micafungin Sodium); 72 mg Citric Acid,  
Anhydrous; 900 mg Sodium Chloride; 184 mg Sodium Citrate,  
Dihydrate; and Water for Injection.

Dosage: See prescribing information.

**Store refrigerated at 2°C to 8°C (36°F to 46°F) in the original  
carton to protect from light. Do Not Freeze.**

If needed, may store at room temperature up to 25°C (77°F) up  
to 30 days in the original carton. Discard after 30 days if stored at  
room temperature.

**Baxter**

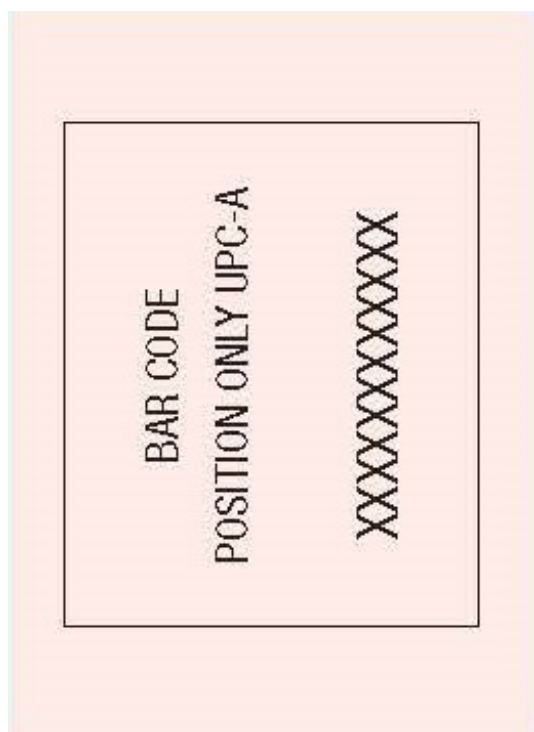
Baxter and Galaxy are registered trademarks of  
Baxter International Inc.

**Baxter Healthcare Corporation,**  
Deerfield, IL 60015 USA

**Code 2G3435**

PL 2501 Plastic

Product of USA  
07-34-00-1663



**Container Label**

NDC 0338-9053-01

**Micafungin  
in 0.9% Sodium Chloride Injection  
100 mg / 100 mL (1 mg / mL)**

**100 mg  
TOTAL**

**100 mL Single-Dose GALAXY container  
Discard unused portion  
For Intravenous Infusion Only**

**Rx only  
Sterile Nonpyrogenic**

Cautions: Do not add supplemental medication or additives.  
Must not be used in series connections. Check for minute leaks  
and solution clarity.

Each mL contains: 100 mg of Micafungin (equivalent  
to 101.73 mg of Micafungin Sodium); 72 mg Citric Acid,  
Anhydrous; 900 mg Sodium Chloride; 184 mg Sodium Citrate,  
Dihydrate; and Water for Injection.

Dosage: See prescribing information.

**Store refrigerated at 2°C to 8°C (36°F to 46°F) in the original  
carton to protect from light. Do Not Freeze.**

If needed, may store at room temperature up to 25°C (77°F) up

to 30 days in the original carton. Discard after 30 days if stored at room temperature.

***Baxter Logo***

Baxter and Galaxy are registered trademarks of Baxter International Inc.

**Baxter Healthcare Corporation,**  
Deerfield, IL 60015 USA

**Code 2G3435**

PL 2501 Plastic

Product of USA

07-34-00-1663

BAR CODE

POSITION ONLY UPCA-A

XXXXXXXXXXXXX



NDC 0338-9055-01

# Micafungin

in 0.9% Sodium Chloride Injection

**150 mg / 150 mL (1 mg / mL)**

**150 mg  
TOTAL**

150 mL Single-Dose GALAXY container

**Rx only**

Discard unused portion

**Sterile Nonpyrogenic**

**For Intravenous Infusion Only**

Cautions: Do not add supplemental medication or additives.  
Must not be used in series connections. Check for minute leaks  
and solution clarity.

Each 150 mL bag contains: 150 mg of Micafungin (equivalent  
to 152.60 mg of Micafungin Sodium); 108 mg Citric Acid,  
Anhydrous; 1350 mg Sodium Chloride; 276 mg Sodium Citrate,  
Dihydrate; and Water for Injection.

Dosage: See prescribing information.

**Store refrigerated at 2°C to 8°C (36°F to 46°F) in the original  
carton to protect from light. Do Not Freeze.**

If needed, may store at room temperature up to 25°C (77°F) up  
to 30 days in the original carton. Discard after 30 days if stored at  
room temperature.

**Baxter**

Baxter and Galaxy are registered trademarks of  
Baxter International Inc.

**Baxter Healthcare Corporation,**  
Deerfield, IL 60015 USA

**Code 2G3433**

PL 2501 Plastic

Product of USA  
07-34-00-1664



**Container Label**

NDC 0338-9055-01

**Micafungin  
in 0.9% Sodium Chloride Injection  
150 mg / 150 mL (1 mg / mL)**

**150mg  
TOTAL**

**150 mL Single-Dose GALAXY container  
Discard unused portion  
For Intravenous Infusion Only**

**Rx only  
Sterile Nonpyrogenic**

Cautions: Do not add supplemental medication or additives.  
Must not be used in series connections. Check for minute leaks  
and solution clarity.

Each mL contains: 150 mg of Micafungin (equivalent  
to 152.60 mg of Micafungin Sodium); 108 mg Citric Acid,  
Anhydrous; 1350 mg Sodium Chloride; 276 mg Sodium Citrate,  
Dihydrate; and Water for Injection.

Dosage: See prescribing information.

**Store refrigerated at 2°C to 8°C (36°F to 46°F) in the original  
carton to protect from light. Do Not Freeze.**

If needed, may store at room temperature up to 25°F (77°F) up

to 30 days in the original carton. Discard after 30 days if stored at room temperature.

***Baxter Logo***

Baxter and Galaxy are registered trademarks of Baxter International Inc.

**Baxter Healthcare Corporation,**  
Deerfield, IL 60015 USA

**Code 2G3433**

PL 2501 Plastic

Product of USA

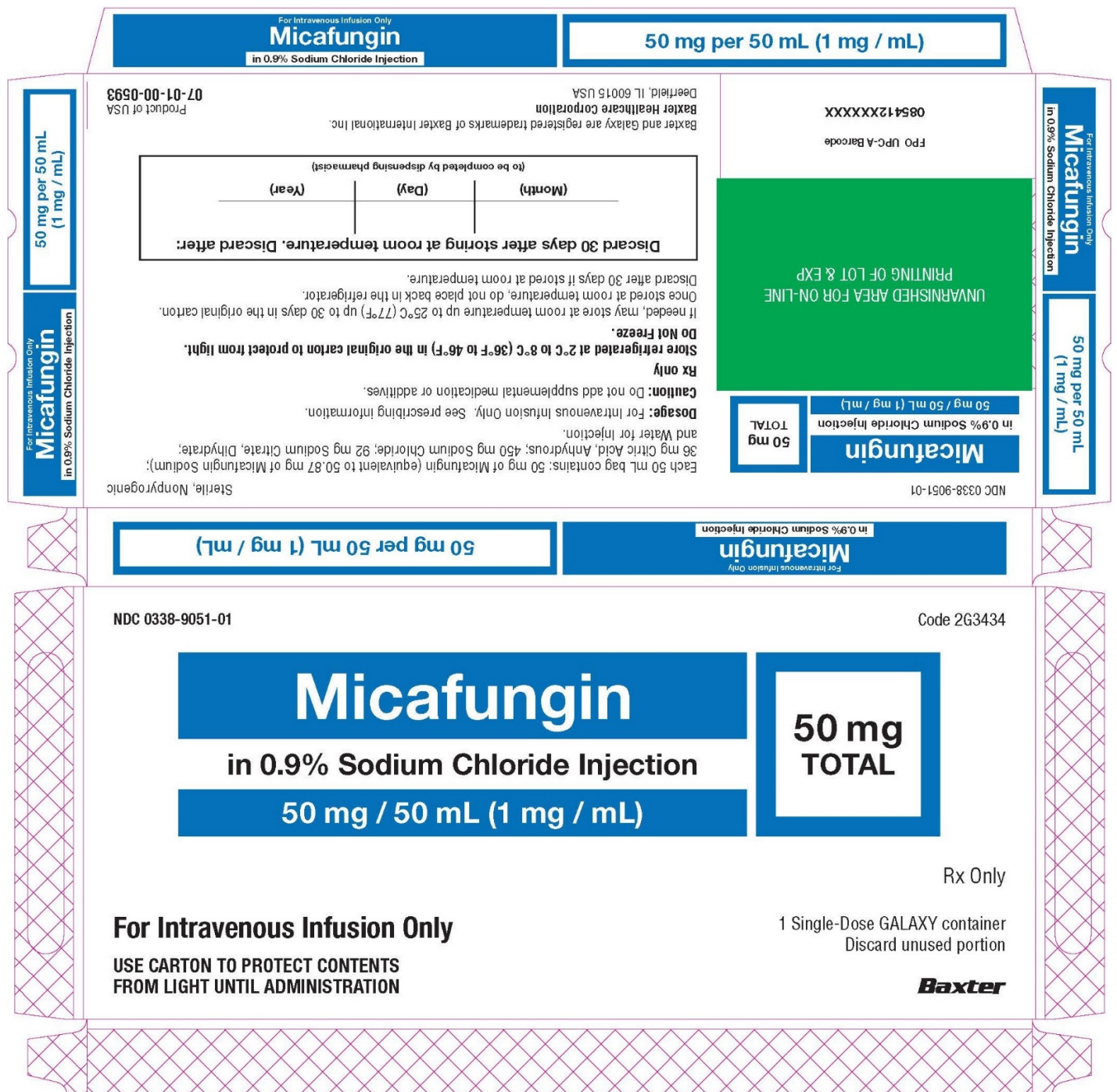
07-34-00-1664

BAR CODE

POSITION ONLY UPCA-A

XXXXXXXXXXXXX





**Carton Label**

**For Intravenous Only  
Micafungin  
in 0.9% Sodium Chloride Injection**

**50 mg per 50 mL (1 mg / mL)**

**For Intravenous Only  
Micafungin  
in 0.9% Sodium Chloride Injection**

**50 mg per 50 mL (1 mg / mL)**

**NDC 0338-9051-01**

Sterile, Nonpyrogenic

**Micafungin**  
**in 0.9% Sodium Chloride Injection**  
**50 mg / 50 mL (1 mg / mL)**

**50 mg**  
**TOTAL**

UNVARNISHED AREA FOR ON-LINE  
PRINTING OF LOT & EXP

FPO UPC-A Barcode  
085412XXXXXX

Each 50 mL bag contains: 50 mg of Micafungin (equivalent to 50.87 mg of Micafungin Sodium);  
36 mg Citric Acid, Anhydrous; 450 mg Sodium Chloride; 92 mg Sodium Citrate, Dihydrate;  
and Water for Injection.

**Dosage:** For Intravenous Infusion Only. See prescribing information.

**Caution:** Do not add supplemental medication or additives.

**RX only**

**Store refrigerated at 2°C to 8°C (36°F to 46°F) in the original carton to protect from light.**  
**Do Not Freeze**

If needed, may store at room temperature up to 25°C (77°F) up to 30 days in the original carton.

Once stored at room temperature, do not place back in the refrigerator.

Discard after 30 days if stored at room temperature

Discard 30 days after storing at room temperature. Discard after:  
(Month) (Day) (Year)  
(to be completed by dispensing pharmacist)

Baxter and Galaxy are registered trademarks of Baxter International Inc.

**Baxter Healthcare Corporation**  
Deerfield, IL 60015 USA

Product of USA  
**07-01-00-0593**

**For Intravenous Infusion Only**  
**Micafungin**  
**in 0.9% Sodium Chloride Injection**

**50 mg per 50 mL (1 mg / mL)**

**For Intravenous Infusion Only**  
**Micafungin**  
**in 0.9% Sodium Chloride Injection**

**50 mg per 50 mL (1 mg / mL)**

**NDC 0338-9051-01**

Code 2G3434

**Micafungin**  
**in 0.9% Sodium Chloride Injection**  
**50 mg / 50 mL (1 mg / 1 mL)**

**50 mg**  
**TOTAL**

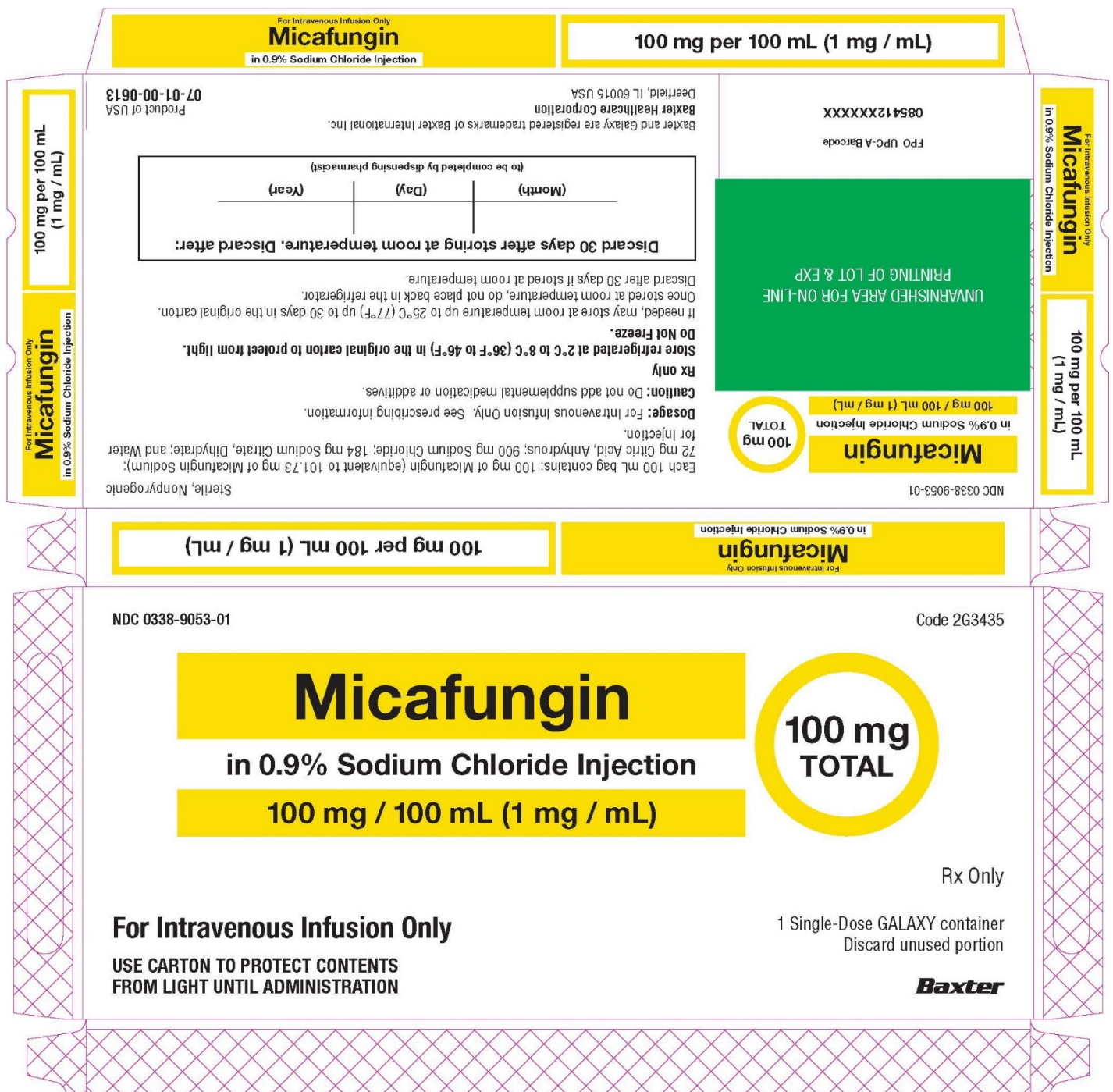
Rx Only

**For Intravenous Infusion Only**

1 Single-Dose GALAXY Container  
Discard unused portion

USE CARTON TO PROTECT CONTENTS  
FROM LIGHT UNTIL ADMINISTRATION

***Baxter Logo***



**Carton Label**

**For Intravenous Only  
Micafungin  
in 0.9% Sodium Chloride Injection**

**100 mg per 100 mL (1 mg / mL)**

**For Intravenous Only  
Micafungin  
in 0.9% Sodium Chloride Injection**

**100 mg per 100 mL (1 mg / mL)**

**NDC 0338-9053-01**

Sterile, Nonpyrogenic

**Micafungin**  
**in 0.9% Sodium Chloride Injection**  
**100 mg / 100 mL (1 mg / mL)**

**100 mg**  
**TOTAL**

UNVARNISHED AREA FOR ON-LINE  
PRINTING OF LOT & EXP

FPO UPC-A Barcode  
085412XXXXXX

Each 100 mL bag contains: 100 mg of Micafungin (equivalent to 101.73 mg of Micafungin Sodium);  
72 mg Citric Acid, Anhydrous; 900 mg Sodium Chloride; 184 mg Sodium Citrate, Dihydrate;  
and Water for Injection.

**Dosage:** For Intravenous Infusion Only. See prescribing information.

**Caution:** Do not add supplemental medication or additives.

**RX only**

**Store refrigerated at 2°C to 8°C (36°F to 46°F) in the original carton to protect from light.**  
**Do Not Freeze**

If needed, may store at room temperature up to 25°C (77°F) up to 30 days in the original carton.

Once stored at room temperature, do not place back in the refrigerator.

Discard after 30 days if stored at room temperature

Discard 30 days after storing at room temperature. Discard after:  
(Month) (Day) (Year)  
(to be completed by dispensing pharmacist)

Baxter and Galaxy are registered trademarks of Baxter International Inc.

**Baxter Healthcare Corporation**  
Deerfield, IL 60015 USA

Product of USA  
**07-01-00-0613**

**For Intravenous Infusion Only**  
**Micafungin**  
**in 0.9% Sodium Chloride Injection**

**100 mg per 100 mL (1 mg / mL)**

**For Intravenous Infusion Only**  
**Micafungin**  
**in 0.9% Sodium Chloride Injection**

**100 mg per 100 mL (1 mg / mL)**

**NDC 0338-9053-01**

Code 2G3435

**Micafungin**  
**in 0.9% Sodium Chloride Injection**  
**100 mg / 100 mL (1 mg / 1 mL)**

**100 mg**  
**TOTAL**

Rx Only

**For Intravenous Infusion Only**

1 Single-Dose GALAXY Container  
Discard unused portion

USE CARTON TO PROTECT CONTENTS  
FROM LIGHT UNTIL ADMINISTRATION

***Baxter Logo***





**in 0.9% Sodium Chloride Injection**

**150 mg per 150 mL (1 mg / mL)**

NDC 0338-9055-01

Sterile, Nonpyrogenic

**Micafungin**

**in 0.9% Sodium Chloride Injection**

**150 mg / 150 mL (1 mg / mL)**

**150 mg**

**TOTAL**

UNVARNISHED AREA FOR ON-LINE

PRINTING OF LOT & EXP

FPO UPC-A Barcode

085412XXXXXX

Each 150 mL bag contains: 150 mg of Micafungin (equivalent to 152.60 mg of Micafungin

Sodium); 108 mg Citric Acid, Anhydrous; 1350 mg Sodium Chloride; 276 mg Sodium Citrate,

Dihydrate; and Water for Injection.

**Dosage:** For Intravenous Infusion Only. See prescribing information.

**Caution:** Do not add supplemental medication or additives.

**RX only**

**Store refrigerated at 2°C to 8°C (36°F to 46°F) in the original carton to protect from light.**

**Do Not Freeze**

If needed, may store at room temperature up to 25°C (77°F) up to 30 days in the original carton.

Once stored at room temperature, do not place back in the refrigerator.

Discard after 30 days if stored at room temperature

Discard 30 days after storing at room temperature. Discard after:

(Month) (Day) (Year)

(to be completed by dispensing pharmacist)

Baxter and Galaxy are registered trademarks of Baxter International Inc.

**Baxter Healthcare Corporation**

Deerfield, IL 60015 USA

Product of USA

**07-01-00-0614**

**For Intravenous Infusion Only**

**Micafungin**

**in 0.9% Sodium Chloride Injection**

**150 mg per 150 mL (1 mg / mL)**



For Intravenous Infusion Only  
Micafungin  
in 0.9% Sodium Chloride Injection  
150 mg per 150 mL (1 mg / mL)  
NDC 0338-9055-01

Code 2G3433

Micafungin  
in 0.9% Sodium Chloride Injection  
150 mg / 150 mL (1 mg / 1 mL)  
150 mg  
TOTAL

Rx Only

For Intravenous Infusion Only  
1 Single-Dose GALAXY Container  
Discard unused portion  
USE CARTON TO PROECT CONTENTS  
FROM LIGHT UNTIL ADMINISTRATION  
*Baxter Logo*

| MICAFUNGIN IN SODIUM CHLORIDE                                       |      |                         |                                 |                |
|---|------|-------------------------|---------------------------------|----------------|
| micafungin in sodium chloride injection                             |      |                         |                                 |                |
|   |      |                         |                                 |                |
| Product Information   |      |                         |                                 |                |
| Product Type  |      | HUMAN PRESCRIPTION DRUG | Item Code (Source)NDC:0338-9051 |                |
| Route of Administration   |      | INTRAVENOUS             |                                 |                |
|   |      |                         |                                 |                |
| Active Ingredient/Active Moiety                                     |      |                         |                                 |                |
| Ingredient Name   |      |                         | Basis of Strength               | Strength       |
| MICAFUNGIN SODIUM (UNII: IS1UP79R56) (MICAFUNGIN - UNII:R10H71BSWG) |      |                         | MICAFUNGIN                      | 50 mg in 50 mL |
|   |      |                         |                                 |                |
| Inactive Ingredients  |      |                         |                                 |                |
| Ingredient Name   |      |                         | Strength                        |                |
| ANHYDROUS CITRIC ACID (UNII: XF417D3PSL)                            |      |                         | 36 mg in 50 mL                  |                |
| SODIUM CHLORIDE (UNII: 451W47IQ8X)                                  |      |                         | 450 mg in 50 mL                 |                |
| TRISODIUM CITRATE DIHYDRATE (UNII: B22547B95K)                      |      |                         | 92 mg in 50 mL                  |                |
| WATER (UNII: 059QF0KO0R)  |      |                         |                                 |                |
|   |      |                         |                                 |                |
| Packaging   |      |                         |                                 |                |
| #   | Item | Package Description     | Marketing                       | Marketing      |

| # | Code             | Package Description  | Start Date | End Date |
|---|------------------|--|------------|----------|
| 1 | NDC:0338-9051-12 | 12 in 1 CARTON   | 09/29/2023 |          |
| 1 | NDC:0338-9051-01 | 1 in 1 CARTON  |            |          |
| 1 |                  | 50 mL in 1 BAG; Type 2: Prefilled Drug Delivery Device/System (syringe, patch, etc.) |            |          |

### Marketing Information

| Marketing Category | Application Number or Monograph Citation | Marketing Start Date | Marketing End Date |
|--------------------|--|----------------------|--------------------|
| NDA                | NDA216142                                | 09/29/2023           |                    |

### MICAFUNGIN IN SODIUM CHLORIDE

micafungin in sodium chloride injection

#### Product Information

|                         |                         |                    |               |
|-------------------------|-------------------------|--------------------|---------------|
| Product Type            | HUMAN PRESCRIPTION DRUG | Item Code (Source) | NDC:0338-9053 |
| Route of Administration | INTRAVENOUS             |                    |               |

#### Active Ingredient/Active Moiety

| Ingredient Name  | Basis of Strength | Strength         |
|--|-------------------|------------------|
| <b>MICAFUNGIN SODIUM</b> (UNII: IS1UP79R56) (MICAFUNGIN - UNII:R10H71BSWG) | MICAFUNGIN        | 100 mg in 100 mL |

#### Inactive Ingredients

| Ingredient Name                                       | Strength         |
|---|------------------|
| <b>ANHYDROUS CITRIC ACID</b> (UNII: XF417D3PSL)       | 72 mg in 100 mL  |
| <b>SODIUM CHLORIDE</b> (UNII: 451W47IQ8X)             | 900 mg in 100 mL |
| <b>TRISODIUM CITRATE DIHYDRATE</b> (UNII: B22547B95K) | 184 mg in 100 mL |
| <b>WATER</b> (UNII: 059QF0KO0R)                       |                  |

#### Packaging

| # | Item Code        | Package Description   | Marketing Start Date | Marketing End Date |
|---|------------------|---|----------------------|--------------------|
| 1 | NDC:0338-9053-12 | 12 in 1 CARTON  | 09/29/2023           |                    |
| 1 | NDC:0338-9053-01 | 1 in 1 CARTON   |                      |                    |
| 1 |                  | 100 mL in 1 BAG; Type 2: Prefilled Drug Delivery Device/System (syringe, patch, etc.) |                      |                    |

## Marketing Information

| Marketing Category | Application Number or Monograph Citation | Marketing Start Date | Marketing End Date |
|--------------------|--|----------------------|--------------------|
| NDA                | NDA216142                                | 09/29/2023           |                    |

## MICAFUNGIN IN SODIUM CHLORIDE

miconazole in sodium chloride injection

### Product Information

|                         |                         |                    |               |
|-------------------------|-------------------------|--------------------|---------------|
| Product Type            | HUMAN PRESCRIPTION DRUG | Item Code (Source) | NDC:0338-9055 |
| Route of Administration | INTRAVENOUS             |                    |               |

### Active Ingredient/Active Moiety

| Ingredient Name   | Basis of Strength | Strength         |
|---|-------------------|------------------|
| MICAFUNGIN SODIUM (UNII: IS1UP79R56) (MICONAZOLE - UNII:R10H71BSWG) | MICONAZOLE        | 150 mg in 150 mL |

### Inactive Ingredients

| Ingredient Name                                | Strength          |
|--|-------------------|
| ANHYDROUS CITRIC ACID (UNII: XF417D3PSL)       | 108 mg in 150 mL  |
| SODIUM CHLORIDE (UNII: 451W47IQ8X)             | 1350 mg in 150 mL |
| TRISODIUM CITRATE DIHYDRATE (UNII: B22547B95K) | 276 mg in 150 mL  |
| WATER (UNII: 059QF0KOOR)                       |                   |

### Packaging

| # | Item Code        | Package Description   | Marketing Start Date | Marketing End Date |
|---|------------------|---|----------------------|--------------------|
| 1 | NDC:0338-9055-10 | 10 in 1 CARTON  | 09/29/2023           |                    |
| 1 | NDC:0338-9055-01 | 1 in 1 CARTON   |                      |                    |
| 1 |                  | 150 mL in 1 BAG; Type 2: Prefilled Drug Delivery Device/System (syringe, patch, etc.) |                      |                    |

## Marketing Information

| Marketing Category | Application Number or Monograph Citation | Marketing Start Date | Marketing End Date |
|--------------------|--|----------------------|--------------------|
| NDA                | NDA216142                                | 09/29/2023           |                    |

**Labeler** - Baxter Healthcare Corporation (005083209)

| Establishment                 |         |           |  |
|-------------------------------|---------|-----------|--|
| Name                          | Address | ID/FEI    | Business Operations  |
| Baxter Healthcare Corporation |         | 194684502 | ANALYSIS(0338-9051, 0338-9053, 0338-9055) , LABEL(0338-9051, 0338-9053, 0338-9055) , MANUFACTURE(0338-9051, 0338-9053, 0338-9055) , PACK(0338-9051, 0338-9053, 0338-9055) , STERILIZE(0338-9051, 0338-9053, 0338-9055) |

Revised: 3/2025

Baxter Healthcare Corporation