

**COUGH AND BRONCHIAL DAYTIME- aconitum napellus, bryonia alba root, calcium sulfide, spongia officinalis skeleton, roasted, tin syrup
Schwabe North America, Inc.**

Disclaimer: This homeopathic product has not been evaluated by the Food and Drug Administration for safety or efficacy. FDA is not aware of scientific evidence to support homeopathy as effective.

Cough and Bronchial Daytime

Active Ingredient

Aconitum napellus 3X

Bryonia 3X

Hepar sulphuris calcareum 6C

Spongia tosta 3X

Stannum metallicum 6C

Inactive Ingredients

Citric Acid

Ethyl Alcohol

Glycerin

Lactose Monohydrate

Oat Extract

Potassium Sorbate

Purified Water

Sorbitol

Dosage & Administration

Directions:

Shake well before each use.

Adults & children 12 years of age and older: Take 2 teaspoons (tsp) (10mL) every 2 hours. For severe coughs, repeat every 20 minutes for first hour, then every 2 hours. Do not exceed 8 servings per day.

Children under 12 years of age: Consult a doctor.

Indications & Usage

Temporarily relieves cough due to minor throat and bronchial irritation as may occur with a cold.

Helps loosen phlegm (mucus) and thin bronchial secretions to drain bronchial tubes.

Soothes the throat.

Purpose

Temporarily relieves cough due to minor throat and bronchial irritation as may occur with a cold.

Helps loosen phlegm (mucus) and thin bronchial secretions to drain bronchial tubes.

Soothes the throat.

Warnings

Sore throat warning: if sore throat is severe, persists more than 2 days, is accompanied or followed by a fever, headache, rash, nausea, or vomiting, consult a doctor promptly.

Ask Doctor

Ask a doctor before use if you have a persistent or chronic cough such as occurs with smoking, asthma, chronic bronchitis, or emphysema, a cough that is accompanied by excessive phlegm (mucus), been taking any medications.

Stop Use

Stop use and ask a doctor if new symptoms occur, symptoms get worse or last more than 7 days, fever worsens or lasts more than 3 days, cough lasts more than 7 days or occurs with rash or persistent headache.

These could be signs of a serious condition.

Pregnancy or Breast Feeding

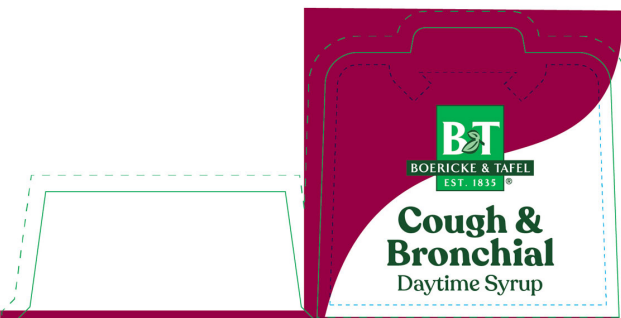
If pregnant or breast-feeding, ask a healthcare professional before use.

Keep out of reach of children

Keep out of reach of children.

Overdose

In case of overdose, seek medical help or contact a Poison Control Center right away.




BOERICKE & TAFEL
 EST. 1835®

Cough & Bronchial Daytime Syrup

COUGH SUPPRESSANT™
 EXPECTORANT™

- Relieves coughs**
- Clears bronchial congestion**
- Soothes the throat**
- No artificial colors
- Non-narcotic

Explore more products at
NATURESWAY.COM


BOERICKE & TAFEL
 EST. 1835®

Cough & Bronchial Daytime Syrup

COUGH SUPPRESSANT™ | EXPECTORANT™

Premium Formula
 Ages 12+ | 10.2% Alcohol



8 FL OZ (240 mL)

Drug Facts

Active ingredients (In 2 teaspoons [tsp] = 10 mL)	Purpose
Aconitum napellus 3X.....	Cough suppressant (hoarse, croupy cough); pain reliever**
Bryonia 3X.....	Cough suppressant (hacking, painful cough); expectorant**
Hepar sulphuris.....	Cough suppressant (hoarse, painful cough); expectorant**
Spongia tosta 3X.....	Cough suppressant (dry, barking cough)**
Stannum metallicum 6C.....	Cough suppressant (spasmodic cough); expectorant**

Uses

- temporarily relieves cough due to minor throat and bronchial irritation as may occur with a cold**
- helps loosen phlegm (mucus) and thin bronchial secretions to drain bronchial tubes**
- soothes the throat**

Warnings

Sore throat warning: If sore throat is severe, persists more than 2 days, is accompanied or followed by a fever, headache, rash, nausea, or vomiting, consult a doctor promptly.

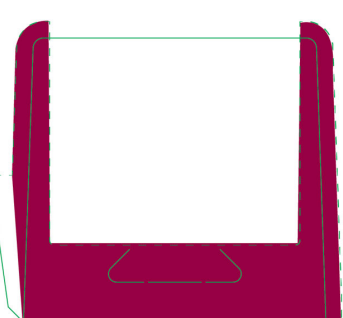
Ask a doctor before use if you have

- a persistent or chronic cough such as occurs with smoking, asthma, chronic bronchitis, or emphysema
- a cough that is accompanied by excessive phlegm (mucus)
- been taking any medications

Stop use and ask a doctor if

- new symptoms occur, symptoms get worse or last more than 7 days
- fever worsens or lasts more than 3 days
- cough lasts more than 7 days or occurs with rash or persistent headache. These could be signs of a serious condition.

If pregnant or breast-feeding, ask a healthcare professional before use. **Keep out of reach of children.** In case of overdose, seek medical help or contact a Poison Control Center right away.



Drug Facts (continued)

Directions

■ shake well before each use

age	dose
adults & children 12 years of age and older	Take 2 teaspoons (tsp) (10 mL) every 2 hours. For severe coughs, repeat every 20 minutes for first hour, then every 2 hours. Do not exceed 8 servings per day.
children under 12 years of age	consult a doctor

Other information

- store at room temperature 20-25° C (68-77° F) in a dry place out of direct sunlight

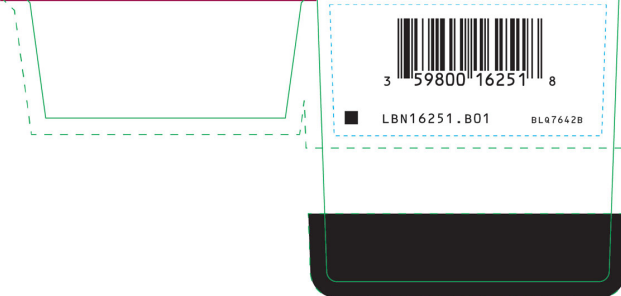
Inactive Ingredients citric acid, ethyl alcohol, glycerin, lactose monohydrate, oat extract, potassium sorbate, purified water, sorbitol

Questions? 1-800-962-8873 / naturesway.com

**There are no valid studies using current scientific methods confirming this product's efficacy. These indications are based solely on traditional homeopathic principles.

TAMPER EVIDENT. Do not use if seal is broken or missing.

©2026 Boericke & Tafel®, a division of Nature's Way Brands, LLC
Green Bay, WI 54311 USA



Drug Facts (continued)

Keep out of reach of children. In case of overdose, seek medical help or contact a Poison Control Center right away.

Directions

■ shake well before each use

age	dose
adults & children 12 years of age and older	Take 2 teaspoons (tsp) (10 mL) every 2 hours. For severe coughs, repeat every 20 minutes for first hour, then every 2 hours. Do not exceed 8 servings per day.
children under 12 years of age	consult a doctor

Other information ■ store at room temperature 20-25 °C (68-77 °F) in a dry place out of direct sunlight

Inactive ingredients citric acid, ethyl alcohol, glycerin, lactose monohydrate, oat extract, potassium sorbate, purified water, sorbitol

Questions? 1-800-962-8873 / naturesway.com

**There are no valid studies using current scientific methods confirming this product's efficacy. These indications are based solely on traditional homeopathic principles.

◆ LN16251.B01 BLQ7642B

TAMPER EVIDENT. Do not use if seal is broken or missing.

©2026 Boericke & Tafel®,
a division of Nature's Way Brands, LLC
Green Bay, WI 54311 USA



HOMEOPATHIC
NDC 53499-1625-8



Cough & Bronchial Daytime Syrup

COUGH SUPPRESSANT** | EXPECTORANT**

Premium Formula

Ages 12+ | 10.2% Alcohol

8 FL OZ (240 mL)



Drug Facts

Active ingredients

(In 2 teaspoons [tsp] = 10 mL)

Active ingredients	Purpose
Aconitum napellus 3X	Cough suppressant (hoarse, croupy cough); pain reliever**
Bryonia 3X	Cough suppressant (hacking, painful cough); expectorant**
Hepar sulphuris	Cough suppressant (hoarse, painful cough); expectorant**
calcareum 6C	expectorant**
Spongia tosta 3X	Cough suppressant (dry, barking cough)**
Stannum metallicum 6C	Cough suppressant (spasmodic cough); expectorant**

Uses ■ temporarily relieves cough due to minor throat and bronchial irritation as may occur with a cold** ■ helps loosen phlegm (mucus) and thin bronchial secretions to drain bronchial tubes** ■ soothes the throat**

Warnings

Sore throat warning: if sore throat is severe, persists more than 2 days, is accompanied or followed by a fever, headache, rash, nausea, or vomiting, consult a doctor promptly

Ask a doctor before use if you have ■ a persistent or chronic cough such as occurs with smoking, asthma, chronic bronchitis, or emphysema ■ a cough that is accompanied by excessive phlegm (mucus) ■ been taking any medications

Stop use and ask a doctor if ■ new symptoms occur, symptoms get worse or last more than 7 days ■ fever worsens or lasts more than 3 days ■ cough lasts more than 7 days or occurs with rash or persistent headache. These could be signs of a serious condition.

If pregnant or breast-feeding, ask a healthcare professional before use.



Cough & Bronchial Daytime Syrup

COUGH SUPPRESSANT™
EXPECTORANT™

- Relieves coughs™
- Clears bronchial congestion™
- Soothes the throat™
- No artificial colors
- Non-narcotic

Explore more products at
NATURESWAY.COM

NEW & IMPROVED FORMULA



HOMEOPATHIC
NDC 53499-1625-4



BOERICKE & TAFEL
EST. 1835®

Cough & Bronchial Daytime Syrup

COUGH SUPPRESSANT™ | EXPECTORANT™

Premium Formula

Ages 12+ | 10.2% Alcohol



4 FL OZ (120 mL)



3 59800 16252 5

LBN16252.B01 BLQ7642B

Drug Facts

Active Ingredients
(In 2 teaspoons [tsp] = 10 mL)

Aconitum napellus 3X..... Cough suppressant (hoarse, croupy cough); pain reliever**

Bryonia 3X..... Cough suppressant (hacking, painful cough); expectorant**

Hepar sulphuris calcareum 6C..... Cough suppressant (hoarse, painful cough); expectorant**

Spongia tosta 3X..... Cough suppressant (dry, barking cough)**

Stannum metallicum 6C..... Cough suppressant (spasmodic cough); expectorant**

Uses

- temporarily relieves cough due to minor throat and bronchial irritation as may occur with a cold**
- helps loosen phlegm (mucus) and thin bronchial secretions to drain bronchial tubes**
- soothes the throat**

Warnings

Sore throat warning: If sore throat is severe, persists more than 2 days, is accompanied or followed by a fever, headache, rash, nausea, or vomiting, consult a doctor promptly

Ask a doctor before use if you have ■ a persistent or chronic cough such as occurs with smoking, asthma, chronic bronchitis, or emphysema ■ a cough that is accompanied by excessive phlegm (mucus) ■ been taking any medications

Stop use and ask a doctor if ■ new symptoms occur, symptoms get worse or last more than 7 days ■ fever worsens or lasts more than 3 days ■ cough lasts more than 7 days or occurs with rash or persistent headache. These could be signs of a serious condition. ▶

Drug Facts (continued)

If pregnant or breast-feeding, ask a healthcare professional before use. **Keep out of reach of children.** In case of overdose, seek medical help or contact a Poison Control Center right away.

Directions

■ shake well before each use

age	dose
adults & children 12 years of age and older	Take 2 teaspoons (tsp) (10 mL) every 2 hours. For severe coughs, repeat every 20 minutes for first hour, then every 2 hours. Do not exceed 8 servings per day.
children under 12 years of age	consult a doctor

Other information

■ store at room temperature 20-25 °C (68-77 °F) in a dry place out of direct sunlight

Inactive ingredients citric acid, ethyl alcohol, glycerin, lactose monohydrate, oat extract, potassium sorbate, purified water, sorbitol

Questions? 1-800-962-8873 / naturesway.com

**There are no valid studies using current scientific methods confirming this product's efficacy. These indications are based solely on traditional homeopathic principles.

TAMPER EVIDENT. Do not use if seal is broken or missing.

©2026 Boericke & Tafel®, a division of Nature's Way Brands, LLC Green Bay, WI 54311 USA

Offset Print Carton
Dieline: WCC-3276



New HS Design.
Proof: P4
Reference: LHB21900293 MU approved color proof

KB

Drug Facts (continued)	
Directions ■ shake well before each use	
age	dose
adults & children 12 years of age and older	Take 2 teaspoons (tsp) (10 mL) every 2 hours. For severe coughs, repeat every 20 minutes for first hour, then every 2 hours. Do not exceed 8 servings per day.
children under 12 years of age	consult a doctor
Other information ■ store at room temperature 20-25° C (68-77° F) in a dry place out of direct sunlight	
Inactive ingredients citric acid, ethyl alcohol, glycerin, lactose monohydrate, oat extract, potassium sorbate, purified water, sorbitol	
Questions? 1-800-962-8873 / naturesway.com	
**There are no valid studies using current scientific methods confirming this product's efficacy. These indications are based solely on traditional homeopathic principles.	

◆ LN16252.B01 BLQ7642B

TAMPER EVIDENT. Do not use if seal is broken or missing.

©2026 Boericke & Tafel®, a division of Nature's Way Brands, LLC Green Bay, WI 54311 USA

Drug Facts	
Active Ingredients (in 2 teaspoons [tsp] = 10 mL)	Purpose
Aconitum napellus 3X..... Cough suppressant (hoarse, croupy cough); pain reliever**	
Bryonia 3X..... Cough suppressant (hacking, painful cough); expectorant**	
Hepar sulphuris calcareum 6C..... Cough suppressant (hoarse, painful cough); expectorant**	
Spongia tosta 3X..... Cough suppressant (dry, barking cough)**	
Stannum metallicum 6C..... Cough suppressant (spasmodic cough); expectorant**	
Uses ■ temporarily relieves cough due to minor throat and bronchial irritation as may occur with a cold** ■ helps loosen phlegm (mucus) and thin bronchial secretions to drain bronchial tubes** ■ soothes the throat**	
Warnings	
Sore throat warning: if sore throat is severe, persists more than 2 days, is accompanied or followed by a fever, headache, rash, nausea, or vomiting, consult a doctor promptly	
Ask a doctor before use if you have ■ a persistent or chronic cough such as occurs with smoking, asthma, chronic bronchitis, or emphysema ■ a cough that is accompanied by excessive phlegm (mucus) ■ been taking any medications	
Stop use and ask a doctor if ■ new symptoms occur, symptoms get worse or last more than 7 days ■ fever worsens or lasts more than 3 days ■ cough lasts more than 7 days or occurs with rash or persistent headache. These could be signs of a serious condition.	
If pregnant or breast-feeding, ask a healthcare professional before use. Keep out of reach of children. In case of overdose, seek medical help or contact a Poison Control Center right away.	

Digital Print Label 2.375"x 5.25" KB

CYAN	MAGENTA	YELLOW	BLACK	Satin Varnish
------	---------	--------	-------	---------------

NEW DESIGN
Proof: Pdf Proof
Reference approved color proof Graphics No. 683863

COUGH AND BRONCHIAL DAYTIME

aconitum napellus, bryonia alba root, calcium sulfide, spongia officinalis skeleton, roasted, tin syrup

Product Information

Product Type	HUMAN OTC DRUG	Item Code (Source)	NDC:53499-1625
Route of Administration	ORAL		

Active Ingredient/Active Moiety

Ingredient Name	Basis of Strength	Strength
ACONITUM NAPELLUS (UNII: U0NQ8555JD) (ACONITUM NAPELLUS - UNII:U0NQ8555JD)	ACONITUM NAPELLUS	3 [hp_X] in 120 mL
BRYONIA ALBA ROOT (UNII: T7J046YI2B) (BRYONIA ALBA ROOT - UNII:T7J046YI2B)	BRYONIA ALBA ROOT	3 [hp_X] in 120 mL
CALCIUM SULFIDE (UNII: 1MBW07J51Q) (CALCIUM SULFIDE - UNII:1MBW07J51Q)	CALCIUM SULFIDE	6 [hp_C] in 120 mL
SPONGIA OFFICINALIS SKELETON, ROASTED (UNII: 1PIP394IID) (SPONGIA OFFICINALIS SKELETON, ROASTED - UNII:1PIP394IID)	SPONGIA OFFICINALIS SKELETON, ROASTED	3 [hp_X] in 120 mL
TIN (UNII: 387GMG9FH5) (TIN - UNII:387GMG9FH5)	TIN	6 [hp_C] in 120 mL

Inactive Ingredients

Ingredient Name	Strength
CITRIC ACID MONOHYDRATE (UNII: 2968PHW8QP)	

ALCOHOL (UNII: 3K9958V90M)	
GLYCERIN (UNII: PDC6A3C00X)	
LACTOSE MONOHYDRATE (UNII: EWQ57Q8I5X)	
OAT (UNII: Z6J799EAJK)	
POTASSIUM SORBATE (UNII: 1VPU26JZZ4)	
WATER (UNII: 059QF0KO0R)	
SORBITOL (UNII: 506T60A25R)	

--

Packaging

#	Item Code	Package Description	Marketing Start Date	Marketing End Date
1	NDC:53499-1625-4	1 in 1 CARTON	05/14/2026	
1		120 mL in 1 BOTTLE, PLASTIC; Type 0: Not a Combination Product		
2	NDC:53499-1625-8	1 in 1 CARTON	05/14/2026	
2		240 mL in 1 BOTTLE, PLASTIC; Type 0: Not a Combination Product		

--

Marketing Information

Marketing Category	Application Number or Monograph Citation	Marketing Start Date	Marketing End Date
unapproved homeopathic		05/14/2026	

--

Labeler - Schwabe North America, Inc. (831153908)

Establishment

Name	Address	ID/FEI	Business Operations
Schwabe North America, Inc.		831153908	manufacture(53499-1625)

Revised: 5/2026

Schwabe North America, Inc.