

## **DISINFECTANT WIPES (75% ALCOHOL)- ethanol cloth**

### **Jintu Handicraft Factory**

*Disclaimer: Most OTC drugs are not reviewed and approved by FDA, however they may be marketed if they comply with applicable regulations and policies. FDA has not evaluated whether this product complies.*

-----

### **JinTu, Wipes, 75% Ethanol**

#### **Active ingredient**

Ethanol 75% v/v. Purpose: Antiseptic

#### **Purpose**

Antiseptic

**When using this product** keep out of eyes, ears, and mouth. In case of contact with eyes, rinse eyes thoroughly with water.

#### **Do not use**

- in children less than 2 months of age
- on open skin

**Stop use and ask a doctor** if irritation or rash occurs. These may be signs of a serious condition.

**Keep out of reach of children.** If swallowed, get medical help or contact a Poison Control Center right away.

#### **Directions**

Unfold towelette, wipe hands, discard after use.

Rub thoroughly into hands for at least 30 seconds, allow to dry.

#### **Directions**

Peel back flap on front to pull out a wipe.

Unfold and wipe hands thoroughly.

Reseal and let hands dry.

No need to rinse.

#### **Warnings**

**For external use only. Flammable. Keep away from heat or flame**

- Do not replace wipes used for medical procedures.
- These wipes are meant for general cleansing.

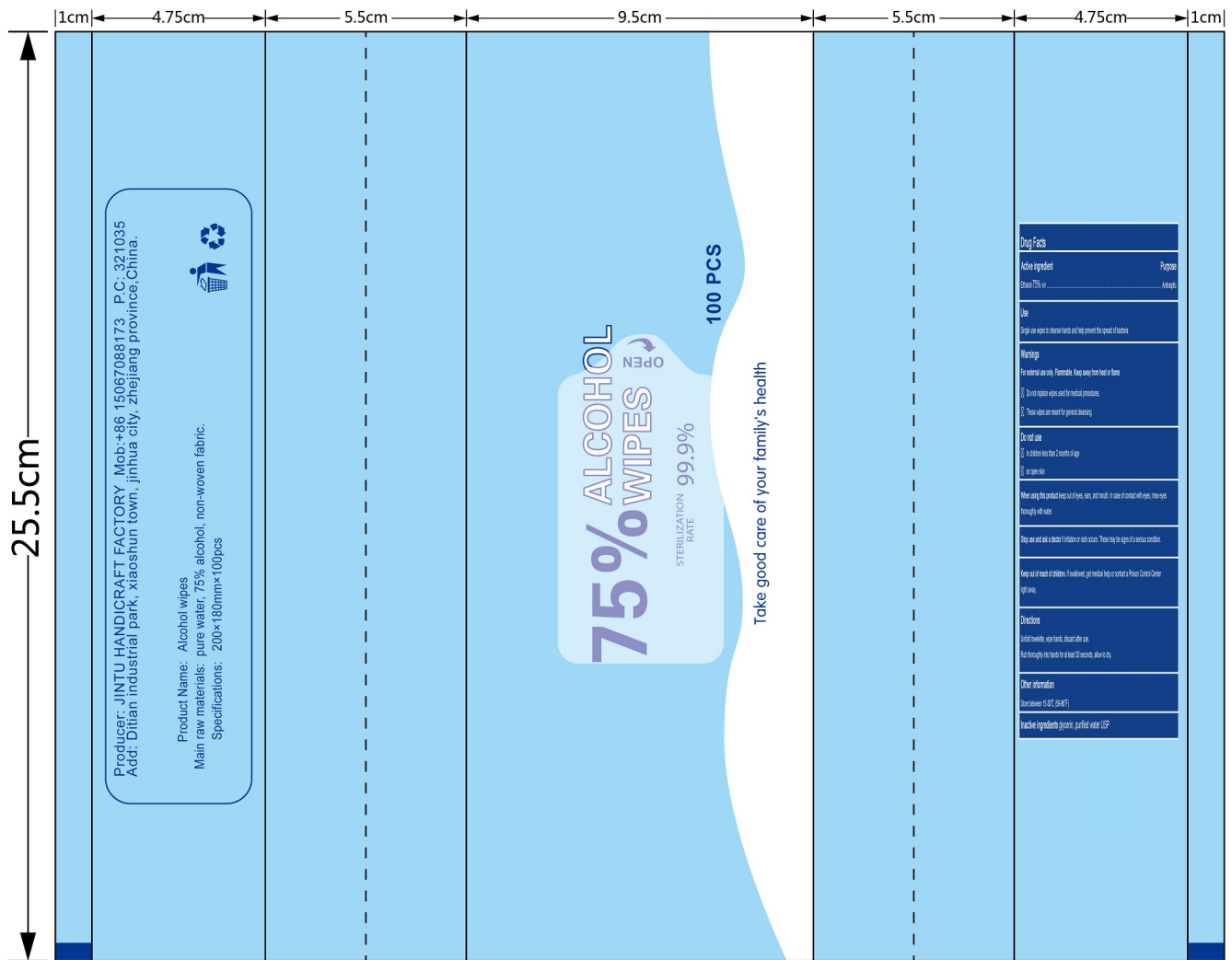
#### **Other information**

Store between 15-30° (59-86°)

## Inactive ingredients

glycerin, purified water USP

## Package label. Principal display panel



## DISINFECTANT WIPES (75% ALCOHOL)

ethanol cloth

### Product Information

<b>Product Type</b>	HUMAN OTC DRUG	<b>Item Code (Source)</b>	NDC:79846-101
<b>Route of Administration</b>	TOPICAL		

### Active Ingredient/Active Moiety

Ingredient Name	Basis of Strength	Strength
ALCOHOL (UNII: 3K9958 V90M) (ALCOHOL - UNII:3K9958 V90M)	ALCOHOL	3 mL

## Inactive Ingredients

Ingredient Name	Strength
GLYCERIN (UNII: PDC6A3C0OX)	
WATER (UNII: 059QF0KO0R)	

## Packaging

#	Item Code	Package Description	Marketing Start Date	Marketing End Date
1	NDC:79846-101-21	50 in 1 POUCH; Type 0: Not a Combination Product	07/27/2020	
2	NDC:79846-101-23	60 in 1 POUCH; Type 0: Not a Combination Product	07/27/2020	
3	NDC:79846-101-25	72 in 1 POUCH; Type 0: Not a Combination Product	07/27/2020	
4	NDC:79846-101-27	80 in 1 POUCH; Type 0: Not a Combination Product	07/27/2020	
5	NDC:79846-101-31	100 in 1 POUCH; Type 0: Not a Combination Product	07/27/2020	
6	NDC:79846-101-50	100 in 1 PAIL; Type 0: Not a Combination Product	07/27/2020	
7	NDC:79846-101-52	120 in 1 PAIL; Type 0: Not a Combination Product	07/27/2020	
8	NDC:79846-101-56	160 in 1 PAIL; Type 0: Not a Combination Product	07/27/2020	
9	NDC:79846-101-58	180 in 1 PAIL; Type 0: Not a Combination Product	07/27/2020	
10	NDC:79846-101-60	200 in 1 PAIL; Type 0: Not a Combination Product	07/27/2020	
11	NDC:79846-101-90	500 in 1 PAIL; Type 0: Not a Combination Product	07/27/2020	

## Marketing Information

Marketing Category	Application Number or Monograph Citation	Marketing Start Date	Marketing End Date
OTC mono graph not final	part333A	07/27/2020	

**Labeler** - Jintu Handicraft Factory (654443675)

**Registrant** - A03 Lab of BTS (548009541)

## Establishment

Name	Address	ID/FEI	Business Operations
Jintu Handicraft Factory		654443675	manufacture(79846-101) , label(79846-101)

Revised: 7/2020

Jintu Handicraft Factory