

**BUPROPION HYDROCHLORIDE SR- bupropion hydrochloride tablet, film coated, extended release**  
**Dr. Reddy's Laboratories Inc.**

-----

**HIGHLIGHTS OF PRESCRIBING INFORMATION**

These highlights do not include all the information needed to use BUPROPION HYDROCHLORIDE EXTENDED-RELEASE TABLETS (SR) safely and effectively. See full prescribing information for BUPROPION HYDROCHLORIDE EXTENDED-RELEASE TABLETS (SR).

**BUPROPION HYDROCHLORIDE extended-release tablets (SR), for oral use**

**Initial U.S. Approval: 1985**

**WARNING: SUICIDAL THOUGHTS AND BEHAVIORS**

*See full prescribing information for complete boxed warning.*

- **Increased risk of suicidal thinking and behavior in children, adolescents, and young adults taking antidepressants. ( 5.1)**
- **Monitor for worsening and emergence of suicidal thoughts and behaviors. ( 5.1)**

-----  
**INDICATIONS AND USAGE**  
-----

- Bupropion hydrochloride extended-release tablets, (SR) are an aminoketone antidepressant, indicated for the treatment of major depressive disorder (MDD). ( 1)

-----  
**DOSAGE AND ADMINISTRATION**  
-----

- Starting dose: 150 mg/day ( 2.1)
- General: Increase dose gradually to reduce seizure risk. ( 2.1, 5.3)
- After 3 days, may increase the dose to 300 mg/day, given as 150 mg twice daily at an interval of at least 8 hours. ( 2.1)
- Usual target dose: 300 mg/day as 150 mg twice daily. ( 2.1)
- Maximum dose: 400 mg/day, given as 200 mg twice daily, for patients not responding to 300 mg/day. ( 2.1)
- Periodically reassess the dose and need for maintenance treatment. ( 2.1)
- Moderate to severe hepatic impairment: 100 mg daily or 150 mg every other day. ( 2.2, 8.7)
- Mild hepatic impairment: Consider reducing the dose and/or frequency of dosing ( 2.2, 8.7)
- Renal impairment: Consider reducing the dose and/or frequency. ( 2.3, 8.6)

-----  
**DOSAGE FORMS AND STRENGTHS**  
-----

- Tablets: 100 mg, 150 mg, 200 mg. ( 3)

-----  
**CONTRAINDICATIONS**  
-----

- Seizure disorder. ( 4, 5.3)
- Current or prior diagnosis of bulimia or anorexia nervosa. ( 4, 5.3)
- Abrupt discontinuation of alcohol, benzodiazepines, barbiturates, antiepileptic drugs. ( 4, 5.3)
- Monoamine Oxidase Inhibitors (MAOIs): Do not use MAOIs intended to treat psychiatric disorders with bupropion hydrochloride extended-release tablets (SR) or within 14 days of stopping treatment with bupropion hydrochloride extended-release tablets (SR). Do not use bupropion hydrochloride extended-release tablets (SR) within 14 days of stopping an MAOI intended to treat psychiatric disorders. In addition, do not start bupropion hydrochloride extended-release tablets (SR) in a patient who is being treated with linezolid or intravenous methylene blue. ( 4, 7.6)
- Known hypersensitivity to bupropion or other ingredients of bupropion hydrochloride extended-release tablets (SR). ( 4, 5.8)

-----  
**WARNINGS AND PRECAUTIONS**  
-----

- Neuropsychiatric adverse events during smoking cessation: Postmarketing reports of serious or clinically significant neuropsychiatric adverse events have included changes in mood (including depression and mania), psychosis, hallucinations, paranoia, delusions, homicidal ideation, aggression, hostility, agitation, anxiety, and panic, as well as suicidal ideation, suicide attempt, and completed suicide. Observe patients attempting to quit smoking with bupropion for the occurrence of such symptoms and instruct them to discontinue bupropion and contact a healthcare provider if they experience such adverse events. ( 5.2)
- Seizure risk: The risk is dose-related. Can minimize risk by gradually increasing the dose and limiting daily dose to 400 mg. Discontinue if seizure occurs. ( 4, 5.3, 7.3)
- Hypertension: Bupropion hydrochloride extended-release tablets (SR) can increase blood pressure.

- Monitor blood pressure before initiating treatment and periodically during treatment. ( 5.4)
- Activation of mania/hypomania: Screen patients for bipolar disorder and monitor for these symptoms. ( 5.5)
- Psychosis and other neuropsychiatric reactions: Instruct patients to contact a healthcare professional if such reactions occur. ( 5.6)
- Angle-closure glaucoma: Angle-closure glaucoma has occurred in patients with untreated anatomically narrow angles treated with antidepressants. ( 5.7)

#### ADVERSE REACTIONS

Most common adverse reactions (incidence  $\geq 5\%$  and  $\geq 2\%$  more than placebo rate) are: headache, dry mouth, nausea, insomnia, dizziness, pharyngitis, constipation, agitation, anxiety, abdominal pain, tinnitus, tremor, palpitation, myalgia, sweating, rash, and anorexia. ( 6.1)

**To report SUSPECTED ADVERSE REACTIONS, contact Dr. Reddy's Laboratories Inc., at 1-888-375-3784 or FDA at 1-800-FDA-1088 or [www.fda.gov/medwatch](http://www.fda.gov/medwatch).**

#### DRUG INTERACTIONS

- CYP2B6 inducers: Dose increase may be necessary if coadministered with CYP2B6 inducers (e.g., ritonavir, lopinavir, efavirenz, carbamazepine, phenobarbital, and phenytoin) based on clinical response, but should not exceed the maximum recommended dose. ( 7.1)
- Drugs metabolized by CYP2D6: Bupropion inhibits CYP2D6 and can increase concentrations of: antidepressants (e.g., venlafaxine, nortriptyline, imipramine, desipramine, paroxetine, fluoxetine, sertraline), antipsychotics (e.g., haloperidol, risperidone, thioridazine), beta-blockers (e.g., metoprolol), and Type 1C antiarrhythmics (e.g., propafenone, flecainide). Consider dose reduction when using with bupropion. ( 7.2)
- Digoxin: May decrease plasma digoxin levels. Monitor digoxin levels. ( 7.2)
- Drugs that lower seizure threshold: Dose bupropion hydrochloride extended-release tablets (SR) with caution. ( 5.3, 7.3)
- Dopaminergic drugs (levodopa and amantadine): CNS toxicity can occur when used concomitantly with bupropion hydrochloride extended-release tablets (SR). ( 7.4)
- MAOIs: Increased risk of hypertensive reactions can occur when used concomitantly with bupropion hydrochloride extended-release tablets (SR). ( 7.6)
- Drug-laboratory test interactions: Bupropion hydrochloride extended-release tablets (SR) can cause false-positive urine test results for amphetamines. ( 7.7)

**See 17 for PATIENT COUNSELING INFORMATION and Medication Guide.**

**Revised: 5/2024**

## FULL PRESCRIBING INFORMATION: CONTENTS\*

### WARNING: SUICIDAL THOUGHTS AND BEHAVIORS

### 1 INDICATIONS AND USAGE

### 2 DOSAGE AND ADMINISTRATION

2.1 General Instructions for Use

2.2 Dose Adjustment in Patients with Hepatic Impairment

2.3 Dose Adjustment in Patients with Renal Impairment

2.4 Switching a Patient to or from a Monoamine Oxidase Inhibitor (MAOI)

Antidepressant

2.5 Use of Bupropion Hydrochloride Extended-release Tablets (SR) with Reversible MAOIs Such as Linezolid or Methylene Blue

### 3 DOSAGE FORMS AND STRENGTHS

### 4 CONTRAINDICATIONS

### 5 WARNINGS AND PRECAUTIONS

5.1 Suicidal Thoughts and Behaviors in Children, Adolescents, and Young Adults

5.2 Neuropsychiatric Adverse Events and Suicide Risk in Smoking Cessation Treatment

5.3 Seizure

5.4 Hypertension

5.5 Activation of Mania/Hypomania

5.6 Psychosis and Other Neuropsychiatric Reactions

5.7 Angle-Closure Glaucoma

5.8 Hypersensitivity Reactions

## **6 ADVERSE REACTIONS**

- 6.1 Clinical Trials Experience
- 6.2 Postmarketing Experience

## **7 DRUG INTERACTIONS**

- 7.1 Potential for Other Drugs to Affect Bupropion Hydrochloride Extended-Release Tablets (SR)
- 7.2 Potential for Bupropion Hydrochloride Extended-release Tablets (SR) to Affect Other Drugs
- 7.3 Drugs that Lower Seizure Threshold
- 7.4 Dopaminergic Drugs (Levodopa and Amantadine)
- 7.5 Use with Alcohol
- 7.6 MAO Inhibitors
- 7.7 Drug-Laboratory Test Interactions

## **8 USE IN SPECIFIC POPULATIONS**

- 8.1 Pregnancy
- 8.2 Lactation
- 8.4 Pediatric Use
- 8.5 Geriatric Use
- 8.6 Renal Impairment
- 8.7 Hepatic Impairment

## **9 DRUG ABUSE AND DEPENDENCE**

- 9.1 Controlled Substance
- 9.2 Abuse

## **10 OVERDOSAGE**

- 10.1 Human Overdose Experience
- 10.2 Overdosage Management

## **11 DESCRIPTION**

## **12 CLINICAL PHARMACOLOGY**

- 12.1 Mechanism of Action
- 12.3 Pharmacokinetics

## **13 NONCLINICAL TOXICOLOGY**

- 13.1 Carcinogenesis, Mutagenesis, Impairment of Fertility

## **14 CLINICAL STUDIES**

## **16 HOW SUPPLIED/STORAGE AND HANDLING**

## **17 PATIENT COUNSELING INFORMATION**

\* Sections or subsections omitted from the full prescribing information are not listed.

---

## **FULL PRESCRIBING INFORMATION**

## **WARNING: SUICIDAL THOUGHTS AND BEHAVIORS**

### **SUICIDALITY AND ANTIDEPRESSANT DRUGS**

**Antidepressants increased the risk of suicidal thoughts and behavior in children, adolescents, and young adults in short-term trials. These trials did not show an increase in the risk of suicidal thoughts and behavior with antidepressant use in subjects over age 24; there was a reduction in risk with antidepressant use in subjects aged 65 and older [see *Warnings and Precautions ( 5.1)*].**

**In patients of all ages who are started on antidepressant therapy, monitor closely for worsening, and for emergence of suicidal thoughts and behaviors. Advise families and caregivers of the need for close observation and communication with the prescriber [see *Warnings and Precautions ( 5.1)*].**

## **1 INDICATIONS AND USAGE**

Bupropion hydrochloride extended-release tablets (SR) is indicated for the treatment of major depressive disorder (MDD), as defined by the Diagnostic and Statistical Manual (DSM).

The efficacy of bupropion in the treatment of a major depressive episode was established in two 4-week controlled inpatient trials and one 6-week controlled outpatient trial of adult subjects with MDD [see *Clinical Studies ( 14)*].

The efficacy of bupropion hydrochloride extended-release tablets (SR) in maintaining an antidepressant response for up to 44 weeks following 8 weeks of acute treatment was demonstrated in a placebo-controlled trial [see *Clinical Studies ( 14)*].

## **2 DOSAGE AND ADMINISTRATION**

### **2.1 General Instructions for Use**

To minimize the risk of seizure, increase the dose gradually [see *Warnings and Precautions ( 5.3)*]. Bupropion hydrochloride extended-release tablets (SR) should be swallowed whole and not crushed, divided, or chewed. Bupropion hydrochloride extended-release tablets (SR) may be taken with or without food.

The usual adult target dose for bupropion hydrochloride extended-release tablets (SR) is 300 mg/day, given as 150 mg twice daily. Initiate dosing with 150 mg/day given as a single daily dose in the morning. After 3 days of dosing, the dose may be increased to the 300 mg/day target dose, given as 150 mg twice daily. There should be an interval of at least 8 hours between successive doses. A maximum of 400 mg/day, given as 200 mg twice daily, may be considered for patients in whom no clinical improvement is noted after several weeks of treatment at 300 mg/day. To avoid high peak concentrations of bupropion and/or its metabolites, do not exceed 200 mg in any single dose.

It is generally agreed that acute episodes of depression require several months or longer of antidepressant drug treatment beyond the response in the acute episode. It is unknown whether the dose of bupropion hydrochloride extended-release tablets (SR) needed for maintenance treatment is identical to the dose that provided an initial response. Periodically reassess the need for maintenance treatment and the appropriate dose for such treatment.

### **2.2 Dose Adjustment in Patients with Hepatic Impairment**

In patients with moderate to severe hepatic impairment (Child-Pugh score: 7 to 15), the maximum dose of bupropion hydrochloride extended-release tablets (SR) is 100 mg/day or 150 mg every other day. In patients with mild hepatic impairment (Child-Pugh score: 5 to 6), consider reducing the dose and/or frequency of dosing [see *Use in Specific Populations* ( 8.7), *Clinical Pharmacology* ( 12.3)].

### **2.3 Dose Adjustment in Patients with Renal Impairment**

Consider reducing the dose and/or frequency of bupropion hydrochloride extended-release tablets (SR) in patients with renal impairment (Glomerular Filtration Rate [GFR] less than 90 mL/min) [see *Use in Specific Populations* ( 8.6), *Clinical Pharmacology* ( 12.3)] .

### **2.4 Switching a Patient to or from a Monoamine Oxidase Inhibitor (MAOI) Antidepressant**

At least 14 days should elapse between discontinuation of an MAOI intended to treat depression and initiation of therapy with bupropion hydrochloride extended-release tablets (SR). Conversely, at least 14 days should be allowed after stopping bupropion hydrochloride extended-release tablets (SR) before starting an MAOI antidepressant [see *Contraindications* ( 4), *Drug Interactions* ( 7.6)] .

### **2.5 Use of Bupropion Hydrochloride Extended-release Tablets (SR) with Reversible MAOIs Such as Linezolid or Methylene Blue**

Do not start bupropion hydrochloride extended-release tablets (SR) in a patient who is being treated with a reversible MAOI such as linezolid or intravenous methylene blue. Drug interactions can increase the risk of hypertensive reactions. In a patient who requires more urgent treatment of a psychiatric condition, non-pharmacological interventions, including hospitalization, should be considered [see *Contraindications* ( 4), *Drug Interactions* ( 7.6)] .

In some cases, a patient already receiving therapy with bupropion hydrochloride extended-release tablets (SR) may require urgent treatment with linezolid or intravenous methylene blue. If acceptable alternatives to linezolid or intravenous methylene blue treatment are not available and the potential benefits of linezolid or intravenous methylene blue treatment are judged to outweigh the risks of hypertensive reactions in a particular patient, bupropion hydrochloride extended-release tablets (SR) should be stopped promptly, and linezolid or intravenous methylene blue can be administered. The patient should be monitored for 2 weeks or until 24 hours after the last dose of linezolid or intravenous methylene blue, whichever comes first. Therapy with bupropion hydrochloride extended-release tablets (SR) may be resumed 24 hours after the last dose of linezolid or intravenous methylene blue.

The risk of administering methylene blue by non-intravenous routes (such as oral tablets or by local injection) or in intravenous doses much lower than 1 mg/kg with bupropion hydrochloride extended-release tablets (SR) is unclear. The clinician should, nevertheless, be aware of the possibility of a drug interaction with such use [see *Contraindications* ( 4), *Drug Interactions* ( 7.6)] .

## **3 DOSAGE FORMS AND STRENGTHS**

100 mg – blue, round, biconvex, film coated tablets, debossed with ‘SG, 174’ on one side and plain on other side.

150 mg – purple, round, biconvex, film coated tablets, debossed with ‘SG, 175’ on one side and plain on other side.

200 mg – pink, round, biconvex, film coated tablets, debossed with ‘SG, 176’ on one

side and plain on other side.

#### **4 CONTRAINDICATIONS**

- Bupropion hydrochloride extended-release tablets (SR) are contraindicated in patients with a seizure disorder.
- Bupropion hydrochloride extended-release tablets (SR) are contraindicated in patients with a current or prior diagnosis of bulimia or anorexia nervosa as a higher incidence of seizures was observed in such patients treated with the immediate-release formulation of bupropion [see *Warnings and Precautions ( 5.3)*].
- Bupropion hydrochloride extended-release tablets (SR) are contraindicated in patients undergoing abrupt discontinuation of alcohol, benzodiazepines, barbiturates, and antiepileptic drugs [see *Warnings and Precautions ( 5.3)*, *Drug Interactions ( 7.3)*].
- The use of MAOIs (intended to treat psychiatric disorders) concomitantly with bupropion hydrochloride extended-release tablets (SR) or within 14 days of discontinuing treatment with bupropion hydrochloride extended-release tablets (SR) is contraindicated. There is an increased risk of hypertensive reactions when bupropion hydrochloride extended-release tablets (SR) are used concomitantly with MAOIs. The use of bupropion hydrochloride extended-release tablets (SR) within 14 days of discontinuing treatment with an MAOI is also contraindicated. Starting bupropion hydrochloride extended-release tablets (SR) in a patient treated with reversible MAOIs such as linezolid or intravenous methylene blue is contraindicated [see *Dosage and Administration ( 2.4, 2.5)*, *Warnings and Precautions ( 5.4)*, *Drug Interactions ( 7.6)*].
- Bupropion hydrochloride extended-release tablets (SR) are contraindicated in patients with known hypersensitivity to bupropion or other ingredients of bupropion hydrochloride extended-release tablets (SR). Anaphylactoid/anaphylactic reactions and Stevens-Johnson syndrome have been reported [see *Warnings and Precautions ( 5.8)*].

#### **5 WARNINGS AND PRECAUTIONS**

##### **5.1 Suicidal Thoughts and Behaviors in Children, Adolescents, and Young Adults**

Patients with MDD, both adult and pediatric, may experience worsening of their depression and/or the emergence of suicidal ideation and behavior (suicidality) or unusual changes in behavior, whether or not they are taking antidepressant medications, and this risk may persist until significant remission occurs. Suicide is a known risk of depression and certain other psychiatric disorders, and these disorders themselves are the strongest predictors of suicide. There has been a long-standing concern that antidepressants may have a role in inducing worsening of depression and the emergence of suicidality in certain patients during the early phases of treatment.

Pooled analyses of short-term placebo-controlled trials of antidepressant drugs (selective serotonin reuptake inhibitors [SSRIs] and others) show that these drugs increase the risk of suicidal thinking and behavior (suicidality) in children, adolescents, and young adults (ages 18 to 24) with MDD and other psychiatric disorders. Short-term clinical trials did not show an increase in the risk of suicidality with antidepressants compared with placebo in adults beyond age 24; there was a reduction with antidepressants compared with placebo in adults aged 65 and older.

The pooled analyses of placebo-controlled trials in children and adolescents with MDD, obsessive compulsive disorder (OCD), or other psychiatric disorders included a total of 24 short-term trials of 9 antidepressant drugs in over 4,400 subjects. The pooled analyses of placebo-controlled trials in adults with MDD or other psychiatric disorders included a total of 295 short-term trials (median duration of 2 months) of 11

antidepressant drugs in over 77,000 subjects. There was considerable variation in risk of suicidality among drugs, but a tendency toward an increase in the younger subjects for almost all drugs studied. There were differences in absolute risk of suicidality across the different indications, with the highest incidence in MDD. The risk differences (drug vs. placebo), however, were relatively stable within age strata and across indications. These risk differences (drug-placebo difference in the number of cases of suicidality per 1,000 subjects treated) are provided in Table 1.

<b>Table 1. Risk Differences in the Number of Suicidality Cases by Age Group in the Pooled Placebo-Controlled Trials of Antidepressants in Pediatric and Adult Subjects</b>	
<b>Age Range</b>	<b>Drug-Placebo Difference in Number of Cases of Suicidality per 1,000 Subjects Treated</b>
Increases Compared With Placebo	
<18	14 additional cases
18 to 24	5 additional cases
Decreases Compared With Placebo	
25 to 64	1 fewer case
≥65	6 fewer cases

No suicides occurred in any of the pediatric trials. There were suicides in the adult trials, but the number was not sufficient to reach any conclusion about drug effect on suicide.

It is unknown whether the suicidality risk extends to longer-term use, i.e., beyond several months. However, there is substantial evidence from placebo-controlled maintenance trials in adults with depression that the use of antidepressants can delay the recurrence of depression.

**All patients being treated with antidepressants for any indication should be monitored appropriately and observed closely for clinical worsening, suicidality, and unusual changes in behavior, especially during the initial few months of a course of drug therapy, or at times of dose changes, either increases or decreases [see Boxed Warning] .**

The following symptoms, anxiety, agitation, panic attacks, insomnia, irritability, hostility, aggressiveness, impulsivity, akathisia (psychomotor restlessness), hypomania, and mania, have been reported in adult and pediatric patients being treated with antidepressants for major depressive disorder as well as for other indications, both psychiatric and nonpsychiatric. Although a causal link between the emergence of such symptoms and either the worsening of depression and/or the emergence of suicidal impulses has not been established, there is concern that such symptoms may represent precursors to emerging suicidality.

Consideration should be given to changing the therapeutic regimen, including possibly discontinuing the medication, in patients whose depression is persistently worse, or who are experiencing emergent suicidality or symptoms that might be precursors to worsening depression or suicidality, especially if these symptoms are severe, abrupt in onset, or were not part of the patient's presenting symptoms.

**Families and caregivers of patients being treated with antidepressants for MDD or other indications, both psychiatric and nonpsychiatric, should be alerted about the need to monitor patients for the emergence of agitation, irritability, unusual changes in behavior, and the other symptoms described above, as well as the emergence of suicidality, and to report such symptoms immediately to healthcare providers. Such monitoring should include daily observation by families and caregivers. Prescriptions for bupropion hydrochloride extended-release tablets (SR) should be written for the**

**smallest quantity of tablets consistent with good patient management, in order to reduce the risk of overdose.**

## **5.2 Neuropsychiatric Adverse Events and Suicide Risk in Smoking Cessation Treatment**

Bupropion hydrochloride extended-release tablets (SR) is not approved for smoking cessation treatment; however, it contains the same active ingredient as the smoking cessation medication ZYBAN. Serious neuropsychiatric adverse events have been reported in patients taking bupropion for smoking cessation. These postmarketing reports have included changes in mood (including depression and mania), psychosis, hallucinations, paranoia, delusions, homicidal ideation, aggression, hostility, agitation, anxiety, and panic, as well as suicidal ideation, suicide attempt, and completed suicide [see *Adverse Reactions* ( 6.2)]. Some patients who stopped smoking may have been experiencing symptoms of nicotine withdrawal, including depressed mood. Depression, rarely including suicidal ideation, has been reported in smokers undergoing a smoking cessation attempt without medication. However, some of these adverse events occurred in patients taking bupropion who continued to smoke.

Neuropsychiatric adverse events occurred in patients without and with pre-existing psychiatric disease; some patients experienced worsening of their psychiatric illnesses. Observe patients for the occurrence of neuropsychiatric adverse events. Advise patients and caregivers that the patient should stop taking Bupropion hydrochloride extended-release tablets and contact a healthcare provider immediately if agitation, depressed mood, or changes in behavior or thinking that are not typical for the patient are observed, or if the patient develops suicidal ideation or suicidal behavior. In many postmarketing cases, resolution of symptoms after discontinuation of bupropion was reported. However, the symptoms persisted in some cases; therefore, ongoing monitoring and supportive care should be provided until symptoms resolve.

## **5.3 Seizure**

Bupropion hydrochloride extended-release tablets (SR) can cause seizure. The risk of seizure is dose-related. The dose should not exceed 400 mg per day. Increase the dose gradually. Discontinue bupropion hydrochloride extended-release tablets (SR) and do not restart treatment if the patient experiences a seizure.

The risk of seizures is also related to patient factors, clinical situations, and concomitant medications that lower the seizure threshold. Consider these risks before initiating treatment with bupropion hydrochloride extended-release tablets (SR). Bupropion hydrochloride extended-release tablets (SR) are contraindicated in patients with a seizure disorder, current or prior diagnosis of anorexia nervosa or bulimia, or undergoing abrupt discontinuation of alcohol, benzodiazepines, barbiturates, and antiepileptic drugs [see *Contraindications* ( 4), *Drug Interactions* ( 7.3)] . The following conditions can also increase the risk of seizure: severe head injury; arteriovenous malformation; CNS tumor or CNS infection; severe stroke; concomitant use of other medications that lower the seizure threshold (e.g., other bupropion products, antipsychotics, tricyclic antidepressants, theophylline, and systemic corticosteroids); metabolic disorders (e.g., hypoglycemia, hyponatremia, severe hepatic impairment, and hypoxia); use of illicit drugs (e.g., cocaine); or abuse or misuse of prescription drugs such as CNS stimulants. Additional predisposing conditions include diabetes mellitus treated with oral hypoglycemic drugs or insulin; use of anorectic drugs; and excessive use of alcohol, benzodiazepines, sedative/hypnotics, or opiates.

Incidence of Seizure with Bupropion Use: When bupropion hydrochloride extended-release tablets (SR) are dosed up to 300 mg/day, the incidence of seizure is approximately 0.1% (1/1,000) and increases to approximately 0.4% (4/1,000) at the maximum recommended dose of 400 mg/day.



The risk of seizure can be reduced if the dose of bupropion hydrochloride extended-release tablets (SR) does not exceed 400 mg/day, given as 200 mg twice daily, and the titration rate is gradual.

#### **5.4 Hypertension**

Treatment with bupropion hydrochloride extended-release tablets (SR) can result in elevated blood pressure and hypertension. Assess blood pressure before initiating treatment with bupropion hydrochloride extended-release tablets (SR) and monitor periodically during treatment. The risk of hypertension is increased if bupropion hydrochloride extended-release tablets (SR) are used concomitantly with MAOIs or other drugs that increase dopaminergic or noradrenergic activity [see *Contraindications ( 4)*].

Data from a comparative trial of the sustained-release formulation of bupropion HCl, nicotine transdermal system (NTS), the combination of sustained-release bupropion plus NTS, and placebo as an aid to smoking cessation suggest a higher incidence of treatment-emergent hypertension in patients treated with the combination of sustained-release bupropion and NTS. In this trial, 6.1% of subjects treated with the combination of sustained-release bupropion and NTS had treatment-emergent hypertension compared with 2.5%, 1.6%, and 3.1% of subjects treated with sustained-release bupropion, NTS, and placebo, respectively. The majority of these subjects had evidence of pre-existing hypertension. Three subjects (1.2%) treated with the combination of sustained-release bupropion and NTS and 1 subject (0.4%) treated with NTS had study medication discontinued due to hypertension compared with none of the subjects treated with sustained-release bupropion or placebo. Monitoring of blood pressure is recommended in patients who receive the combination of bupropion and nicotine replacement.

In a clinical trial of bupropion immediate-release in MDD subjects with stable congestive heart failure (N = 36), bupropion was associated with an exacerbation of pre-existing hypertension in 2 subjects, leading to discontinuation of bupropion treatment. There are no controlled trials assessing the safety of bupropion in patients with a recent history of myocardial infarction or unstable cardiac disease.

#### **5.5 Activation of Mania/Hypomania**

Antidepressant treatment can precipitate a manic, mixed, or hypomanic manic episode. The risk appears to be increased in patients with bipolar disorder or who have risk factors for bipolar disorder. Prior to initiating bupropion hydrochloride extended-release tablets (SR), screen patients for a history of bipolar disorder and the presence of risk factors for bipolar disorder (e.g., family history of bipolar disorder, suicide, or depression). Bupropion hydrochloride extended-release tablets (SR) are not approved for use in treating bipolar depression.

#### **5.6 Psychosis and Other Neuropsychiatric Reactions**

Depressed patients treated with bupropion hydrochloride extended-release tablets (SR) have had a variety of neuropsychiatric signs and symptoms, including delusions, hallucinations, psychosis, concentration disturbance, paranoia, and confusion. Some of these patients had a diagnosis of bipolar disorder. In some cases, these symptoms abated upon dose reduction and/or withdrawal of treatment. Instruct patients to contact a healthcare professional if such reactions occur.

#### **5.7 Angle-Closure Glaucoma**

The pupillary dilation that occurs following use of many antidepressant drugs including bupropion hydrochloride extended-release tablets (SR) may trigger an angle-closure attack in a patient with anatomically narrow angles who does not have a patent iridectomy.

## 5.8 Hypersensitivity Reactions

Anaphylactoid/anaphylactic reactions have occurred during clinical trials with bupropion. Reactions have been characterized by pruritus, urticaria, angioedema, and dyspnea requiring medical treatment. In addition, there have been rare, spontaneous postmarketing reports of erythema multiforme, Stevens-Johnson syndrome, and anaphylactic shock associated with bupropion. Instruct patients to discontinue bupropion hydrochloride extended-release tablets (SR) and consult a healthcare provider if they develop an allergic or anaphylactoid/anaphylactic reaction (e.g., skin rash, pruritus, hives, chest pain, edema, and shortness of breath) during treatment.

There are reports of arthralgia, myalgia, fever with rash, and other serum sickness-like symptoms suggestive of delayed hypersensitivity.

## 6 ADVERSE REACTIONS

The following adverse reactions are discussed in greater detail in other sections of the labeling:

- Suicidal thoughts and behaviors in adolescents and young adults [see *Boxed Warning, Warnings and Precautions ( 5.1)*]
- Neuropsychiatric symptoms and suicide risk in smoking cessation treatment [see *Warnings and Precautions ( 5.2)*]
- Seizure [see *Warnings and Precautions ( 5.3)*]
- Hypertension [see *Warnings and Precautions ( 5.4)*]
- Activation of mania or hypomania [see *Warnings and Precautions ( 5.5)*]
- Psychosis and other neuropsychiatric reactions [see *Warnings and Precautions ( 5.6)*]
- Angle-closure glaucoma [see *Warnings and Precautions ( 5.7)*]
- Hypersensitivity reactions [see *Warnings and Precautions ( 5.8)*]

### 6.1 Clinical Trials Experience

Because clinical trials are conducted under widely varying conditions, adverse reaction rates observed in the clinical trials of a drug cannot be directly compared with rates in the clinical trials of another drug and may not reflect the rates observed in clinical practice.

#### Adverse Reactions Leading to Discontinuation of Treatment

In placebo-controlled clinical trials, 4%, 9%, and 11% of the placebo, 300 mg/day, and 400 mg/day groups, respectively, discontinued treatment due to adverse reactions. The specific adverse reactions leading to discontinuation in at least 1% of the 300 mg/day or 400 mg/day groups and at a rate at least twice the placebo rate are listed in Table 2.

<b>Adverse Reaction</b>	<b>Placebo (n = 385)</b>	<b>Bupropion Hydrochloride Extended- Release Tablets (SR) 300 mg/day (n = 376)</b>	<b>Bupropion Hydrochloride Extended- Release Tablets (SR) 400 mg/day (n = 114)</b>
Rash	0.0%	2.4%	0.9%
Nausea	0.3%	0.8%	1.8%
Agitation	0.3%	0.3%	1.8%
Migraine	0.3%	0.0%	1.8%

### Commonly Observed Adverse Reactions

Adverse reactions from Table 3 occurring in at least 5% of subjects treated with bupropion hydrochloride extended-release tablets (SR) and at a rate at least twice the placebo rate are listed below for the 300 mg/day and 400 mg/day dose groups.

*Bupropion hydrochloride extended-release tablets (SR) 300 mg/day:* Anorexia, dry mouth, rash, sweating, tinnitus, and tremor.

*Bupropion hydrochloride extended-release tablets (SR) 400 mg/day:* Abdominal pain, agitation, anxiety, dizziness, dry mouth, insomnia, myalgia, nausea, palpitation, pharyngitis, sweating, tinnitus, and urinary frequency.

Adverse reactions reported in placebo-controlled trials are presented in Table 3. Reported adverse reactions were classified using a COSTART-based Dictionary.

<b>Table 3. Adverse Reactions Reported by at Least 1% of Subjects and at a Greater Frequency than Placebo in Controlled Clinical Trials</b>			
<b>Body System/ Adverse Reaction</b>	<b>Bupropion Hydrochloride Extended-Release Tablets (SR) 300 mg/day (n = 376)</b>	<b>Bupropion Hydrochloride Extended-Release Tablets (SR) 400 mg/day (n = 114)</b>	<b>Placebo (n = 385)</b>
Body (general)			
Headache	26%	25%	23%
Infection	8%	9%	6%
Abdominal pain	3%	9%	2%
Asthenia	2%	4%	2%
Chest pain	3%	4%	1%
Pain	2%	3%	2%
Fever	1%	2%	—
Cardiovascular			
Palpitation	2%	6%	2%
Flushing	1%	4%	—
Migraine	1%	4%	1%
Hot flashes	1%	3%	1%
Digestive			
Dry mouth	17%	24%	7%
Nausea	13%	18%	8%
Constipation	10%	5%	7%
Diarrhea	5%	7%	6%
Anorexia	5%	3%	2%
Vomiting	4%	2%	2%
Dysphagia	0%	2%	0%
Musculoskeletal			
Myalgia	2%	6%	3%
Arthralgia	1%	4%	1%
Arthritis	0%	2%	0%
Twitch	1%	2%	—
Nervous system			
Insomnia	11%	16%	6%
Dizziness	7%	11%	5%
Agitation	3%	9%	2%

Anxiety	5%	6%	3%
Tremor	6%	3%	1%
Nervousness	5%	3%	3%
Somnolence	2%	3%	2%
Irritability	3%	2%	2%
Memory decreased	—	3%	1%
Paresthesia	1%	2%	1%
Central nervous system stimulation	2%	1%	1%
Respiratory			
Pharyngitis	3%	11%	2%
Sinusitis	3%	1%	2%
Increased cough	1%	2%	1%
Skin			
Sweating	6%	5%	2%
Rash	5%	4%	1%
Pruritus	2%	4%	2%
Urticaria	2%	1%	0%
Special senses			
Tinnitus	6%	6%	2%
Taste perversion	2%	4%	—
Blurred vision or diplopia	3%	2%	2%
Urogenital			
Urinary frequency	2%	5%	2%
Urinary urgency	—	2%	0%
Vaginal hemorrhage <sup>a</sup>	0%	2%	—
Urinary tract infection	1%	0%	—

<sup>a</sup>Incidence based on the number of female subjects.

— Hyphen denotes adverse events occurring in greater than 0 but less than 0.5% of subjects.

#### Other Adverse Reactions Observed During the Clinical Development of Bupropion

In addition to the adverse reactions noted above, the following adverse reactions have been reported in clinical trials with the sustained-release formulation of bupropion in depressed subjects and in nondepressed smokers, as well as in clinical trials with the immediate-release formulation of bupropion.

Adverse reaction frequencies represent the proportion of subjects who experienced a treatment-emergent adverse reaction on at least one occasion in placebo-controlled trials for depression (n = 987) or smoking cessation (n = 1,013), or subjects who experienced an adverse reaction requiring discontinuation of treatment in an open-label surveillance trial with bupropion hydrochloride extended-release tablets (SR) (n = 3,100). All treatment-emergent adverse reactions are included except those listed in Table 3, those listed in other safety-related sections of the prescribing information, those subsumed under COSTART terms that are either overly general or excessively specific

so as to be uninformative, those not reasonably associated with the use of the drug, and those that were not serious and occurred in fewer than 2 subjects.

Adverse reactions are further categorized by body system and listed in order of decreasing frequency according to the following definitions of frequency: Frequent adverse reactions are defined as those occurring in at least 1/100 subjects. Infrequent adverse reactions are those occurring in 1/100 to 1/1,000 subjects, while rare events are those occurring in less than 1/1,000 subjects.

*Body (General):* Infrequent were chills, facial edema, and photosensitivity. Rare was malaise.

*Cardiovascular:* Infrequent were postural hypotension, stroke, tachycardia, and vasodilation. Rare were syncope and myocardial infarction.

*Digestive:* Infrequent were abnormal liver function, bruxism, gastric reflux, gingivitis, increased salivation, jaundice, mouth ulcers, stomatitis, and thirst. Rare was edema of tongue.

*Hemic and Lymphatic:* Infrequent was ecchymosis.

*Metabolic and Nutritional:* Infrequent were edema and peripheral edema.

*Musculoskeletal:* Infrequent were leg cramps.

*Nervous System:* Infrequent were abnormal coordination, decreased libido, depersonalization, dysphoria, emotional lability, hostility, hyperkinesia, hypertonia, hypesthesia, suicidal ideation, and vertigo. Rare were amnesia, ataxia, derealization, and hypomania.

*Respiratory:* Rare was bronchospasm.

*Special Senses:* Infrequent were accommodation abnormality and dry eye.

*Urogenital:* Infrequent were impotence, polyuria, and prostate disorder.

#### Changes in Body Weight

In placebo-controlled trials, subjects experienced weight gain or weight loss as shown in Table 4.

<b>Weight Change</b>	<b>Bupropion Hydrochloride Extended-release Tablets (SR) 300 mg/day (n = 339)</b>	<b>Bupropion Hydrochloride Extended-release Tablets (SR) 400 mg/day (n = 112)</b>	<b>Placebo (n = 347)</b>
Gained $>5$ lbs	3%	2%	4%
Lost $>5$ lbs	14%	19%	6%

In clinical trials conducted with the immediate-release formulation of bupropion, 35% of subjects receiving tricyclic antidepressants gained weight, compared with 9% of subjects treated with the immediate-release formulation of bupropion. If weight loss is a major presenting sign of a patient's depressive illness, the anorectic and/or weight-reducing potential of bupropion hydrochloride extended-release tablets (SR) should be considered.

## **6.2 Postmarketing Experience**

The following adverse reactions have been identified during postapproval use of

bupropion hydrochloride extended-release tablets (SR) and are not described elsewhere in the label. Because these reactions are reported voluntarily from a population of uncertain size, it is not always possible to reliably estimate their frequency or establish a causal relationship to drug exposure.

#### Body (General)

Arthralgia, myalgia, and fever with rash and other symptoms suggestive of delayed hypersensitivity. These symptoms may resemble serum sickness [see *Warnings and Precautions* ( 5.8)].

#### Cardiovascular

Complete atrioventricular block, extrasystoles, hypotension, hypertension (in some cases severe), phlebitis, and pulmonary embolism, and Brugada pattern/syndrome.

#### Digestive

Colitis, esophagitis, gastrointestinal hemorrhage, gum hemorrhage, hepatitis, intestinal perforation, pancreatitis, and stomach ulcer.

#### Endocrine

Hyperglycemia, hypoglycemia, hyponatremia, and syndrome of inappropriate antidiuretic hormone secretion.

#### Hemic and Lymphatic

Anemia, leukocytosis, leukopenia, lymphadenopathy, pancytopenia, and thrombocytopenia. Altered PT and/or INR, infrequently associated with hemorrhagic or thrombotic complications, were observed when bupropion was coadministered with warfarin.

#### Metabolic and Nutritional

Glycosuria.

#### Musculoskeletal

Muscle rigidity/fever/rhabdomyolysis and muscle weakness.

#### Nervous System

Abnormal electroencephalogram (EEG), aggression, akinesia, aphasia, coma, completed suicide, delirium, delusions, dysarthria, euphoria, extrapyramidal syndrome (dyskinesia, dystonia, hypokinesia, parkinsonism), hallucinations, increased libido, manic reaction, neuralgia, neuropathy, paranoid ideation, restlessness, suicide attempt, and unmasking tardive dyskinesia.

#### Respiratory

Pneumonia.

#### Skin and Subcutaneous Tissue Disorders

Alopecia, angioedema, exfoliative dermatitis, hirsutism, Stevens-Johnson syndrome, acute generalized exanthematous pustulosis, and drug reaction with eosinophilia and systemic symptoms (DRESS).

#### Special Senses

Deafness, increased intraocular pressure, and mydriasis.

#### Urogenital

Abnormal ejaculation, cystitis, dyspareunia, dysuria, gynecomastia, menopause, painful erection, salpingitis, urinary incontinence, urinary retention, and vaginitis.

## **7 DRUG INTERACTIONS**

### **7.1 Potential for Other Drugs to Affect Bupropion Hydrochloride Extended-Release Tablets (SR)**

Bupropion is primarily metabolized to hydroxybupropion by CYP2B6. Therefore, the

potential exists for drug interactions between bupropion hydrochloride extended-release tablets (SR) and drugs that are inhibitors or inducers of CYP2B6.

#### Inhibitors of CYP2B6

Ticlopidine and Clopidogrel: Concomitant treatment with these drugs can increase bupropion exposure but decrease hydroxybupropion exposure. Based on clinical response, dosage adjustment of bupropion hydrochloride extended-release tablets (SR) may be necessary when coadministered with CYP2B6 inhibitors (e.g., ticlopidine or clopidogrel) [see *Clinical Pharmacology* ( 12.3)] .

#### Inducers of CYP2B6

Ritonavir, Lopinavir, and Efavirenz: Concomitant treatment with these drugs can decrease bupropion and hydroxybupropion exposure. Dosage increase of bupropion hydrochloride extended-release tablets (SR) may be necessary when coadministered with ritonavir, lopinavir, or efavirenz [see *Clinical Pharmacology* ( 12.3)] but should not exceed the maximum recommended dose.

*Carbamazepine, Phenobarbital, Phenytoin:* While not systematically studied, these drugs may induce the metabolism of bupropion and may decrease bupropion exposure [see *Clinical Pharmacology* ( 12.3)] . If bupropion is used concomitantly with a CYP inducer, it may be necessary to increase the dose of bupropion, but the maximum recommended dose should not be exceeded.

## **7.2 Potential for Bupropion Hydrochloride Extended-release Tablets (SR) to Affect Other Drugs**

#### Drugs Metabolized by CYP2D6

Bupropion and its metabolites (erythrohydrobupropion, threo hydrobupropion, hydroxybupropion) are CYP2D6 inhibitors. Therefore, coadministration of bupropion hydrochloride extended-release tablets (SR) with drugs that are metabolized by CYP2D6 can increase the exposures of drugs that are substrates of CYP2D6. Such drugs include certain antidepressants (e.g., venlafaxine, nortriptyline, imipramine, desipramine, paroxetine, fluoxetine, and sertraline), antipsychotics (e.g., haloperidol, risperidone, thioridazine), beta-blockers (e.g., metoprolol), and Type 1C antiarrhythmics (e.g., propafenone and flecainide). When used concomitantly with bupropion hydrochloride extended-release tablets (SR), it may be necessary to decrease the dose of these CYP2D6 substrates, particularly for drugs with a narrow therapeutic index.

Drugs that require metabolic activation by CYP2D6 to be effective (e.g., tamoxifen) theoretically could have reduced efficacy when administered concomitantly with inhibitors of CYP2D6 such as bupropion. Patients treated concomitantly with bupropion hydrochloride extended-release tablets (SR) and such drugs may require increased doses of the drug [see *Clinical Pharmacology* ( 12.3)] .

#### Digoxin

Coadministration of bupropion hydrochloride extended-release tablets (SR) with digoxin may decrease plasma digoxin levels. Monitor plasma digoxin levels in patients treated concomitantly with bupropion hydrochloride extended-release tablets (SR) and digoxin [see *Clinical Pharmacology* ( 12.3)].

## **7.3 Drugs that Lower Seizure Threshold**

Use extreme caution when coadministering bupropion hydrochloride extended-release tablets (SR) with other drugs that lower seizure threshold (e.g., other bupropion products, antipsychotics, antidepressants, theophylline, or systemic corticosteroids). Use low initial doses and increase the dose gradually [see *Contraindications* ( 4), *Warnings and Precautions* ( 5.3)] .

## **7.4 Dopaminergic Drugs (Levodopa and Amantadine)**

Bupropion, levodopa, and amantadine have dopamine agonist effects. CNS toxicity has been reported when bupropion was coadministered with levodopa or amantadine. Adverse reactions have included restlessness, agitation, tremor, ataxia, gait disturbance, vertigo, and dizziness. It is presumed that the toxicity results from cumulative dopamine agonist effects. Use caution when administering bupropion hydrochloride extended-release tablets (SR) concomitantly with these drugs.

### **7.5 Use with Alcohol**

In postmarketing experience, there have been rare reports of adverse neuropsychiatric events or reduced alcohol tolerance in patients who were drinking alcohol during treatment with bupropion hydrochloride extended-release tablets (SR). The consumption of alcohol during treatment with bupropion hydrochloride extended-release tablets (SR) should be minimized or avoided.

### **7.6 MAO Inhibitors**

Bupropion inhibits the reuptake of dopamine and norepinephrine. Concomitant use of MAOIs and bupropion is contraindicated because there is an increased risk of hypertensive reactions if bupropion is used concomitantly with MAOIs. Studies in animals demonstrate that the acute toxicity of bupropion is enhanced by the MAO inhibitor phenelzine. At least 14 days should elapse between discontinuation of an MAOI intended to treat depression and initiation of treatment with bupropion hydrochloride extended-release tablets (SR). Conversely, at least 14 days should be allowed after stopping bupropion hydrochloride extended-release tablets (SR) before starting an MAOI antidepressant [see *Dosage and Administration* ( 2.4, 2.5), *Contraindications* ( 4)] .

### **7.7 Drug-Laboratory Test Interactions**

False-positive urine immunoassay screening tests for amphetamines have been reported in patients taking bupropion. This is due to lack of specificity of some screening tests. False-positive test results may result even following discontinuation of bupropion therapy. Confirmatory tests, such as gas chromatography/mass spectrometry, will distinguish bupropion from amphetamines.

## **8 USE IN SPECIFIC POPULATIONS**

### **8.1 Pregnancy**

#### Pregnancy Exposure Registry

There is an independent pregnancy exposure registry that monitors pregnancy outcomes in women exposed to any antidepressants during pregnancy. Healthcare providers are encouraged to register patients by calling the National Pregnancy Registry for Antidepressants at 1-844-405-6185 or visiting online at <https://womensmentalhealth.org/clinical-and-research-programs/pregnancyregistry/antidepressants>.

#### Risk Summary

Data from epidemiological studies of pregnant women exposed to bupropion in the first trimester have not identified an increased risk of congenital malformations overall (see *Data*). There are risks to the mother associated with untreated depression in pregnancy (see *Clinical Considerations*). When bupropion was administered to pregnant rats during organogenesis, there was no evidence of fetal malformations at doses up to approximately 11 times the maximum recommended human dose (MRHD) of 400 mg/day. When given to pregnant rabbits during organogenesis, non-dose-related increases in incidence of fetal malformations, and skeletal variations were observed at doses approximately equal to the MRHD and greater. Decreased fetal weights were seen



at doses twice the MRHD and greater (see *Animal Data*).

The estimated background risk for major birth defects and miscarriage is unknown for the indicated population. All pregnancies have a background risk of birth defect, loss, or other adverse outcomes. In the U.S. general population, the estimated background risk of major birth defects and of miscarriage in clinically recognized pregnancies is 2% to 4% and 15% to 20%, respectively.

### Clinical Considerations

*Disease-Associated Maternal and/or Embryo/Fetal Risk:* A prospective, longitudinal study followed 201 pregnant women with a history of major depressive disorder who were euthymic and taking antidepressants during pregnancy at the beginning of pregnancy. The women who discontinued antidepressants during pregnancy were more likely to experience a relapse of major depression than women who continued antidepressants. Consider the risks to the mother of untreated depression and potential effects on the fetus when discontinuing or changing treatment with antidepressant medications during pregnancy and postpartum.

### Data

*Human Data:* Data from the international bupropion Pregnancy Registry (675 first trimester exposures) and a retrospective cohort study using the United Healthcare database (1,213 first trimester exposures) did not show an increased risk for malformations overall. The Registry was not designed or powered to evaluate specific defects but suggested a possible increase in cardiac malformations.

No increased risk for cardiovascular malformations overall has been observed after bupropion exposure during the first trimester. The prospectively observed rate of cardiovascular malformations in pregnancies with exposure to bupropion in the first trimester from the international Pregnancy Registry was 1.3% (9 cardiovascular malformations/675 first-trimester maternal bupropion exposures), which is similar to the background rate of cardiovascular malformations (approximately 1%). Data from the United Healthcare database, which had a limited number of exposed cases with cardiovascular malformations, and a case-control study (6,853 infants with cardiovascular malformations and 5,763 with non-cardiovascular malformations) of self-reported bupropion use from the National Birth Defects Prevention Study (NBDPS) did not show an increased risk for cardiovascular malformations overall after bupropion exposure during the first trimester.

Study findings on bupropion exposure during the first trimester and risk for left ventricular outflow tract obstruction (LVOTO) are inconsistent and do not allow conclusions regarding a possible association. The United Healthcare database lacked sufficient power to evaluate this association; the NBDPS found increased risk for LVOTO (n = 10; adjusted OR = 2.6; 95% CI: 1.2, 5.7), and the Slone Epidemiology case control study did not find increased risk for LVOTO.

Study findings on bupropion exposure during the first trimester and risk for ventricular septal defect (VSD) are inconsistent and do not allow conclusions regarding a possible association. The Slone Epidemiology Study found an increased risk for VSD following first trimester maternal bupropion exposure (n = 17; adjusted OR = 2.5; 95% CI: 1.3, 5.0) but did not find increased risk for any other cardiovascular malformations studied (including LVOTO as above). The NBDPS and United Healthcare database study did not find an association between first trimester maternal bupropion exposure and VSD.

For the findings of LVOTO and VSD, the studies were limited by the small number of exposed cases, inconsistent findings among studies, and the potential for chance findings from multiple comparisons in case control studies.

*Animal Data:* In studies conducted in rats and rabbits, bupropion was administered orally during the period of organogenesis at doses of up to 450 and 150 mg/kg/day, respectively (approximately 11 and 7 times the MRHD, respectively, on a mg/m<sup>2</sup> basis).

There was no evidence of fetal malformations in rats. When given to pregnant rabbits during organogenesis, non-dose-related increases in incidence of fetal malformations and skeletal variations were observed at the lowest dose tested (25 mg/kg/day, approximately equal to the MRHD on a mg/m<sup>2</sup> basis) and greater. Decreased fetal weights were observed at doses of 50 mg/kg/day (approximately 2 times the MRHD on a mg/m<sup>2</sup> basis) and greater. No maternal toxicity was evident at doses of 50 mg/kg/day or less.

In a pre-and postnatal development study, bupropion administered orally to pregnant rats at doses of up to 150 mg/kg/day (approximately 4 times the MRHD on a mg/m<sup>2</sup> basis) from embryonic implantation through lactation had no effect on pup growth or development.

## **8.2 Lactation**

### Risk Summary

Data from published literature report the presence of bupropion and its metabolites in human milk (*see Data*). There are no data on the effects of bupropion or its metabolites on milk production. Limited data from postmarketing reports have not identified a clear association of adverse reactions in the breastfed infant. The developmental and health benefits of breastfeeding should be considered along with the mother's clinical need for bupropion hydrochloride extended-release tablets (SR) and any potential adverse effects on the breastfed child from bupropion hydrochloride extended-release tablets (SR) or from the underlying maternal condition.

### Data

In a lactation study of 10 women, levels of orally dosed bupropion and its active metabolites were measured in expressed milk. The average daily infant exposure (assuming 150 mL/kg daily consumption) to bupropion and its active metabolites was 2% of the maternal weight-adjusted dose. Postmarketing reports have described seizures in breastfed infants. The relationship of bupropion exposure and these seizures is unclear.

## **8.4 Pediatric Use**

Safety and effectiveness in the pediatric population have not been established [*see Boxed Warning, Warnings and Precautions ( 5.1)*] .

## **8.5 Geriatric Use**

Of the approximately 6,000 subjects who participated in clinical trials with bupropion sustained-release tablets (depression and smoking cessation trials), 275 were aged ≥65 years and 47 were aged ≥75 years. In addition, several hundred subjects aged ≥65 years participated in clinical trials using the immediate-release formulation of bupropion (depression trials). No overall differences in safety or effectiveness were observed between these subjects and younger subjects. Reported clinical experience has not identified differences in responses between the elderly and younger patients, but greater sensitivity of some older individuals cannot be ruled out.

Bupropion is extensively metabolized in the liver to active metabolites, which are further metabolized and excreted by the kidneys. The risk of adverse reactions may be greater in patients with impaired renal function. Because elderly patients are more likely to have decreased renal function, it may be necessary to consider this factor in dose selection; it may be useful to monitor renal function [*see Dosage and Administration ( 2.3), Use in Specific Populations ( 8.6), Clinical Pharmacology ( 12.3)*].

## **8.6 Renal Impairment**

Consider a reduced dose and/or dosing frequency of bupropion hydrochloride

extended-release tablets (SR) in patients with renal impairment (GFR: less than 90 mL per min). Bupropion and its metabolites are cleared renally and may accumulate in such patients to a greater extent than usual. Monitor closely for adverse reactions that could indicate high bupropion or metabolite exposures [see *Dosage and Administration* ( 2.3), *Clinical Pharmacology* ( 12.3)] .

## **8.7 Hepatic Impairment**

In patients with moderate to severe hepatic impairment (Child-Pugh score: 7 to 15), the maximum dose of bupropion hydrochloride extended-release tablets (SR) is 100 mg per day or 150 mg every other day. In patients with mild hepatic impairment (Child-Pugh score: 5 to 6), consider reducing the dose and/or frequency of dosing [see *Dosage and Administration* ( 2.2), *Clinical Pharmacology* ( 12.3)] .

## **9 DRUG ABUSE AND DEPENDENCE**

### **9.1 Controlled Substance**

Bupropion is not a controlled substance.

### **9.2 Abuse**

#### Humans

Controlled clinical trials conducted in normal volunteers, in subjects with a history of multiple drug abuse, and in depressed subjects showed some increase in motor activity and agitation/excitement, often typical of central stimulant activity.

In a population of individuals experienced with drugs of abuse, a single oral dose of 400 mg of bupropion produced mild amphetamine-like activity as compared with placebo on the Morphine-Benzedrine Subscale of the Addiction Research Center Inventories (ARCI) and a score greater than placebo but less than 15 mg of the Schedule II stimulant dextroamphetamine on the Liking Scale of the ARCI. These scales measure general feelings of euphoria and drug liking which are often associated with abuse potential.

Findings in clinical trials, however, are not known to reliably predict the abuse potential of drugs. Nonetheless, evidence from single-dose trials does suggest that the recommended daily dosage of bupropion when administered orally in divided doses is not likely to be significantly reinforcing to amphetamine or CNS stimulant abusers. However, higher doses (which could not be tested because of the risk of seizure) might be modestly attractive to those who abuse CNS stimulant drugs.

Bupropion hydrochloride extended-release tablets (SR) are intended for oral use only. The inhalation of crushed tablets or injection of dissolved bupropion has been reported. Seizures and/or cases of death have been reported when bupropion has been administered intranasally or by parenteral injection.

#### Animals

Studies in rodents and primates demonstrated that bupropion exhibits some pharmacologic actions common to psychostimulants. In rodents, it has been shown to increase locomotor activity, elicit a mild stereotyped behavior response, and increase rates of responding in several schedule-controlled behavior paradigms. In primate models assessing the positive reinforcing effects of psychoactive drugs, bupropion was self-administered intravenously. In rats, bupropion produced amphetamine-like and cocaine-like discriminative stimulus effects in drug discrimination paradigms used to characterize the subjective effects of psychoactive drugs.

## **10 OVERDOSAGE**

## 10.1 Human Overdose Experience

Overdoses of up to 30 grams or more of bupropion have been reported. Seizure was reported in approximately one-third of all cases. Other serious reactions reported with overdoses of bupropion alone included hallucinations, loss of consciousness, mental status changes, sinus tachycardia, ECG changes such as conduction disturbances (including QRS prolongation) or arrhythmias, clonus, myoclonus, and hyperreflexia. Fever, muscle rigidity, rhabdomyolysis, hypotension, stupor, coma, and respiratory failure have been reported mainly when bupropion was part of multiple drug overdoses.

Although most patients recovered without sequelae, deaths associated with overdoses of bupropion alone have been reported in patients ingesting large doses of the drug. Multiple uncontrolled seizures, bradycardia, cardiac failure, and cardiac arrest prior to death were reported in these patients.

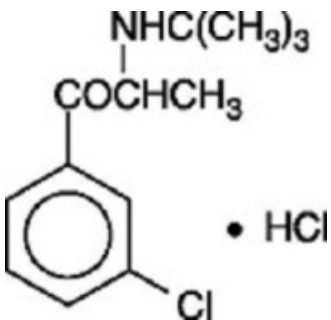
## 10.2 Overdosage Management

Consult a Certified Poison Control Center for up-to-date guidance and advice. Call 1-800-222-1222 or refer to [www.poisson.org](http://www.poisson.org).

There are no known antidotes for bupropion. In case of an overdose, provide supportive care, including close medical supervision and monitoring. Consider the possibility of multiple drug overdose. Ensure an adequate airway, oxygenation, and ventilation. Monitor cardiac rhythm and vital signs. Induction of emesis is not recommended.

## 11 DESCRIPTION

Bupropion hydrochloride extended-release tablets, USP (SR), an antidepressant of the aminoketone class, is chemically unrelated to tricyclic, tetracyclic, selective serotonin reuptake inhibitor, or other known antidepressant agents. Its structure closely resembles that of diethylpropion; it is related to phenylethylamines. It is designated as (±)-1-(3-chlorophenyl)-2-[(1,1-dimethylethyl)amino]-1-propanone hydrochloride. The molecular weight is 276.2. The molecular formula is  $C_{13}H_{18}ClNO \cdot HCl$ . Bupropion hydrochloride powder is white, powder, soluble in 0.1N HCl, alcohol 96% and in water. It has a bitter taste and produces the sensation of local anesthesia on the oral mucosa. The structural formula is:



Bupropion hydrochloride extended-release tablets, USP (SR), are supplied for oral administration as 100 mg (blue), 150 mg (purple), and 200 mg (pink), film-coated, extended-release tablets. Each tablet contains the labeled amount of bupropion hydrochloride and the inactive ingredients: copovidone, cysteine hydrochloride, hypromellose, magnesium stearate, microcrystalline cellulose, polyethylene glycol, polysorbate 80 and titanium dioxide. In addition, the 100 mg tablet contains FD&C Blue No. 1 Brilliant Blue FCF Aluminium Lake, the 150 mg tablet contains FD&C Blue No. 2 Indigo Carmine Aluminium Lake and FD&C Red No. 40 Allura Red AC Aluminium Lake, and the 200 mg tablet contains FD&C Red No. 40 Allura Red AC

Aluminium Lake. In addition, flavoring agent contains dextrose, ethyl alcohol, gum arabic, propylene glycol and silicon dioxide.

Bupropion hydrochloride extended-release tablets, USP (SR) meets USP Dissolution Test 2.

## **12 CLINICAL PHARMACOLOGY**

### **12.1 Mechanism of Action**

The exact mechanism of the antidepressant action of bupropion is not known, but is presumed to be related to noradrenergic and/or dopaminergic mechanisms. Bupropion is a relatively weak inhibitor of the neuronal reuptake of norepinephrine and dopamine, and does not inhibit the reuptake of serotonin. Bupropion does not inhibit monoamine oxidase.

### **12.3 Pharmacokinetics**

Bupropion is a racemic mixture. The pharmacological activity and pharmacokinetics of the individual enantiomers have not been studied. The mean elimination half-life ( $\pm$ SD) of bupropion after chronic dosing is 21 ( $\pm$ 9) hours, and steady-state plasma concentrations of bupropion are reached within 8 days.

#### Absorption

The absolute bioavailability of bupropion hydrochloride extended-release tablets (SR) in humans has not been determined because an intravenous formulation for human use is not available. However, it appears likely that only a small proportion of any orally administered dose reaches the systemic circulation intact. In rat and dog studies, the bioavailability of bupropion ranged from 5% to 20%.

In humans, following oral administration of bupropion hydrochloride extended-release tablets (SR), peak plasma concentration ( $C_{max}$ ) of bupropion is usually achieved within 3 hours.

In a trial comparing chronic dosing with bupropion hydrochloride extended-release tablets (SR) 150 mg twice daily to bupropion immediate-release formulation 100 mg 3 times daily, the steady state ( $C_{max}$ ) for bupropion after bupropion hydrochloride extended-release tablets (SR) administration was approximately 85% of those achieved after bupropion immediate-release formulation administration. Exposure (AUC) to bupropion was equivalent for both formulations. Bioequivalence was also demonstrated for all three major active metabolites (i.e., hydroxybupropion, threohydrobupropion and erythrohydrobupropion) for both ( $C_{max}$ ) and AUC. Thus, at steady state, bupropion hydrochloride extended-release tablets (SR) given twice daily, and the immediate-release formulation of bupropion given 3 times daily, are essentially bioequivalent for both bupropion and the 3 quantitatively important metabolites.

Bupropion hydrochloride extended-release tablets (SR) can be taken with or without food. Bupropion  $C_{max}$  and AUC were increased by 11% to 35% and 16% to 19%, respectively, when bupropion hydrochloride extended-release tablets (SR) was administered with food to healthy volunteers in three trials. The food effect is not considered clinically significant.

#### Distribution

In vitro tests show that bupropion is 84% bound to human plasma proteins at concentrations up to 200 mcg/mL. The extent of protein binding of the hydroxybupropion metabolite is similar to that for bupropion; whereas, the extent of protein binding of the threohydrobupropion metabolite is about half that seen with bupropion.

#### Metabolism

Bupropion is extensively metabolized in humans. Three metabolites are active: hydroxybupropion, which is formed via hydroxylation of the *tert*-butyl group of bupropion, and the amino-alcohol isomers, threohydrobupropion and erythrohydrobupropion, which are formed via reduction of the carbonyl group. In vitro findings suggest that CYP2B6 is the principal isoenzyme involved in the formation of hydroxybupropion, while cytochrome P450 enzymes are not involved in the formation of threohydrobupropion. Oxidation of the bupropion side chain results in the formation of a glycine conjugate of meta-chlorobenzoic acid, which is then excreted as the major urinary metabolite. The potency and toxicity of the metabolites relative to bupropion have not been fully characterized. However, it has been demonstrated in an antidepressant screening test in mice that hydroxybupropion is one-half as potent as bupropion, while threohydrobupropion and erythrohydrobupropion are 5-fold less potent than bupropion. This may be of clinical importance because the plasma concentrations of the metabolites are as high as or higher than those of bupropion.

Following a single-dose administration of bupropion hydrochloride extended-release tablets (SR) in humans, ( $C_{max}$ ) of hydroxybupropion occurs approximately 6 hours post-dose and is approximately 10 times the peak level of the parent drug at steady state. The elimination half-life of hydroxybupropion is approximately 20 ( $\pm 5$ ) hours and its AUC at steady state is about 17 times that of bupropion. The times to peak concentrations for the erythrohydrobupropion and threohydrobupropion metabolites are similar to that of the hydroxybupropion metabolite. However, their elimination half-lives are longer, 33( $\pm 10$ ) and 37 ( $\pm 13$ ) hours, respectively, and steady-state AUCs are 1.5 and 7 times that of bupropion, respectively.

Bupropion and its metabolites exhibit linear kinetics following chronic administration of 300 to 450 mg/day.

#### Elimination

Following oral administration of 200 mg of  $^{14}C$ -bupropion in humans, 87% and 10% of the radioactive dose were recovered in the urine and feces, respectively. Only 0.5% of the oral dose was excreted as unchanged bupropion.

#### Specific Populations

Factors or conditions altering metabolic capacity (e.g., liver disease, congestive heart failure [CHF], age, concomitant medications, etc.) or elimination may be expected to influence the degree and extent of accumulation of the active metabolites of bupropion. The elimination of the major metabolites of bupropion may be affected by reduced renal or hepatic function because they are moderately polar compounds and are likely to undergo further metabolism or conjugation in the liver prior to urinary excretion.

*Patients with Renal Impairment:* There is limited information on the pharmacokinetics of bupropion in patients with renal impairment. An inter-trial comparison between normal subjects and subjects with end-stage renal failure demonstrated that the parent drug ( $C_{max}$ ) and AUC values were comparable in the 2 groups, whereas the hydroxybupropion and threohydrobupropion metabolites had a 2.3- and 2.8-fold increase, respectively, in AUC for subjects with end-stage renal failure. A second trial, comparing normal subjects and subjects with moderate-to-severe renal impairment (GFR  $30.9 \pm 10.8$  mL/min), showed that after a single 150 mg dose of sustained-release bupropion, exposure to bupropion was approximately 2-fold higher in subjects with impaired renal function, while levels of the hydroxybupropion and threo/erythrohydrobupropion (combined) metabolites were similar in the 2 groups. Bupropion is extensively metabolized in the liver to active metabolites, which are further metabolized and subsequently excreted by the kidneys. The elimination of the major metabolites of bupropion may be reduced by impaired renal function. Bupropion hydrochloride extended-release tablets (SR) should be used with caution in patients with renal impairment and a reduced frequency and/or dose should be considered [see *Use in Specific Populations* ( 8.6)].

*Patients with Hepatic Impairment:* The effect of hepatic impairment on the

pharmacokinetics of bupropion was characterized in 2 single-dose trials, one in subjects with alcoholic liver disease and one in subjects with mild-to-severe cirrhosis. The first trial demonstrated that the half-life of hydroxybupropion was significantly longer in 8 subjects with alcoholic liver disease than in 8 healthy volunteers ( $32 \pm 14$  hours versus  $21 \pm 5$  hours, respectively). Although not statistically significant, the AUCs for bupropion and hydroxybupropion were more variable and tended to be greater (by 53% to 57%) in volunteers with alcoholic liver disease. The differences in half-life for bupropion and the other metabolites in the 2 groups were minimal.

The second trial demonstrated no statistically significant differences in the pharmacokinetics of bupropion and its active metabolites in 9 subjects with mild-to-moderate hepatic cirrhosis compared with 8 healthy volunteers. However, more variability was observed in some of the pharmacokinetic parameters for bupropion (AUC,  $C_{max}$ , and  $T_{max}$ ) and its active metabolites ( $t_{1/2}$ ) in subjects with mild-to-moderate hepatic cirrhosis. In subjects with severe hepatic cirrhosis, significant alterations in the pharmacokinetics of bupropion and its metabolites were seen ( Table 5).

	<b>C<sub>max</sub></b>	<b>AUC</b>	<b>t<sub>1/2</sub></b>	<b>T<sub>max</sub><sup>a</sup></b>
Bupropion	1.69	3.12	1.43	0.5 h
Hydroxybupropion	0.31	1.28	3.88	19 h
Threo/erythrohydrobupropion amino alcohol	0.69	2.48	1.96	20 h

<sup>a</sup> Difference.

*Patients with Left Ventricular Dysfunction:* During a chronic dosing trial with bupropion in 14 depressed subjects with left ventricular dysfunction (history of CHF or an enlarged heart on x-ray), there was no apparent effect on the pharmacokinetics of bupropion or its metabolites, compared with healthy volunteers.

*Age:* The effects of age on the pharmacokinetics of bupropion and its metabolites have not been fully characterized, but an exploration of steady-state bupropion concentrations from several depression efficacy trials involving subjects dosed in a range of 300 to 750 mg/day, on a 3-times-daily schedule, revealed no relationship between age (18 to 83 years) and plasma concentration of bupropion. A single-dose pharmacokinetic trial demonstrated that the disposition of bupropion and its metabolites in elderly subjects was similar to that of younger subjects. These data suggest there is no prominent effect of age on bupropion concentration; however, another single- and multiple-dose pharmacokinetics trial suggested that the elderly are at increased risk for accumulation of bupropion and its metabolites [see *Use in Specific Populations* ( 8.5)].

*Male and Female Patients:* Pooled analysis of bupropion pharmacokinetic data from 90 healthy male and 90 healthy female volunteers revealed no sex-related differences in the peak plasma concentrations of bupropion. The mean systemic exposure (AUC) was approximately 13% higher in male volunteers compared with female volunteers. The clinical significance of this finding is unknown.

*Smokers:* The effects of cigarette smoking on the pharmacokinetics of bupropion were studied in 34 healthy male and female volunteers; 17 were chronic cigarette smokers and 17 were nonsmokers. Following oral administration of a single 150-mg dose of bupropion, there were no statistically significant differences in  $C_{max}$ , half-life,  $T_{max}$ , AUC, or clearance of bupropion or its active metabolites between smokers and nonsmokers.

#### Drug Interaction Studies

*Potential for Other Drugs to Affect Bupropion Hydrochloride Extended-release Tablets (SR):* *In vitro* studies indicate that bupropion is primarily metabolized to hydroxybupropion by CYP2B6. Therefore, the potential exists for drug interactions between bupropion hydrochloride extended-release tablets (SR) and drugs that are inhibitors or inducers of CYP2B6. In addition, *in vitro* studies suggest that paroxetine, sertraline, norfluoxetine, fluvoxamine, and nelfinavir inhibit the hydroxylation of bupropion.

*Inhibitors of CYP2B6: Ticlopidine, Clopidogrel:* In a trial in healthy male volunteers, clopidogrel 75 mg once daily or ticlopidine 250 mg twice daily increased exposures ( $C_{max}$  and AUC) of bupropion by 40% and 60% for clopidogrel, and by 38% and 85% for ticlopidine, respectively. The exposures ( $C_{max}$  and AUC) of hydroxybupropion were decreased 50% and 52%, respectively, by clopidogrel, and 78% and 84%, respectively, by ticlopidine. This effect is thought to be due to the inhibition of the CYP2B6-catalyzed bupropion hydroxylation.

*Prasugrel:* Prasugrel is a weak inhibitor of CYP2B6. In healthy subjects, prasugrel increased bupropion  $C_{max}$  and AUC values by 14% and 18%, respectively, and decreased  $C_{max}$  and AUC values of hydroxybupropion, an active metabolite of bupropion, by 32% and 24%, respectively.

*Cimetidine:* The threohydrobupropion metabolite of bupropion does not appear to be produced by cytochrome P450 enzymes. The effects of concomitant administration of cimetidine on the pharmacokinetics of bupropion and its active metabolites were studied in 24 healthy young male volunteers. Following oral administration of bupropion 300 mg with and without cimetidine 800 mg, the pharmacokinetics of bupropion and hydroxybupropion were unaffected. However, there were 16% and 32% increases in the AUC and  $C_{max}$ , respectively, of the combined moieties of threohydrobupropion and erythrohydrobupropion.

*Citalopram:* Citalopram did not affect the pharmacokinetics of bupropion and its three metabolites.

*Inducers of CYP2B6: Ritonavir and Lopinavir:* In a healthy volunteer trial, ritonavir 100 mg twice daily reduced the AUC and  $C_{max}$  of bupropion by 22% and 21%, respectively. The exposure of the hydroxybupropion metabolite was decreased by 23%, the threohydrobupropion decreased by 38%, and the erythrohydrobupropion decreased by 48%.

In a second healthy volunteer trial, ritonavir at a dose of 600 mg twice daily decreased the AUC and the  $C_{max}$  of bupropion by 66% and 62%, respectively. The exposure of the hydroxybupropion metabolite was decreased by 78%, the threohydrobupropion decreased by 50%, and the erythrohydrobupropion decreased by 68%.

In another healthy volunteer trial, lopinavir 400 mg/ritonavir 100 mg twice daily decreased bupropion AUC and  $C_{max}$  by 57%. The AUC and  $C_{max}$  of hydroxybupropion were decreased by 50% and 31%, respectively.

*Efavirenz:* In a trial in healthy volunteers, efavirenz 600 mg once daily for 2 weeks reduced the AUC and  $C_{max}$  of bupropion by approximately 55% and 34%, respectively. The AUC of hydroxybupropion was unchanged, whereas  $C_{max}$  of hydroxybupropion was increased by 50%.

*Carbamazepine, Phenobarbital, Phenytoin:* While not systematically studied, these drugs may induce the metabolism of bupropion.

#### Potential for Bupropion Hydrochloride Extended-Release Tablets (SR) to Affect Other Drugs

Animal data indicated that bupropion may be an inducer of drug-metabolizing enzymes in humans. In one trial, following chronic administration of bupropion 100 mg three times daily to 8 healthy male volunteers for 14 days, there was no evidence of induction



of its own metabolism. Nevertheless, there may be potential for clinically important alterations of blood levels of co-administered drugs.

*Drugs Metabolized by CYP2D6:* In vitro, bupropion and its metabolites (erythrohydrobupropion, threo hydrobupropion, hydroxybupropion) are CYP2D6 inhibitors. In a clinical trial of 15 male subjects (ages 19 to 35 years) who were extensive metabolizers of CYP2D6, bupropion 300 mg/day followed by a single dose of 50 mg desipramine increased the  $C_{max}$ , AUC, and  $t_{1/2}$  of desipramine by an average of approximately 2-, 5-, and 2-fold, respectively. The effect was present for at least 7 days after the last dose of bupropion. Concomitant use of bupropion with other drugs metabolized by CYP2D6 has not been formally studied.

*Citalopram:* Although citalopram is not primarily metabolized by CYP2D6, in one trial bupropion increased the  $C_{max}$  and AUC of citalopram by 30% and 40%, respectively.

*Lamotrigine:* Multiple oral doses of bupropion had no statistically significant effects on the single-dose pharmacokinetics of lamotrigine in 12 healthy volunteers.

*Digoxin:* Literature data showed that digoxin exposure was decreased when a single oral dose of 0.5-mg digoxin was administered 24 hours after a single oral dose of extended-release 150-mg bupropion in healthy volunteers.

## **13 NONCLINICAL TOXICOLOGY**

### **13.1 Carcinogenesis, Mutagenesis, Impairment of Fertility**

Lifetime carcinogenicity studies were performed in rats and mice at bupropion doses up to 300 and 150 mg/kg/day, respectively. These doses are approximately 7 and 2 times the MRHD, respectively, on a  $mg/m^2$  basis. In the rat study there was an increase in nodular proliferative lesions of the liver at doses of 100 to 300 mg/kg/day (approximately 2 to 7 times the MRHD on a  $mg/m^2$  basis); lower doses were not tested. The question of whether or not such lesions may be precursors of neoplasms of the liver is currently unresolved. Similar liver lesions were not seen in the mouse study, and no increase in malignant tumors of the liver and other organs was seen in either study.

Bupropion produced a positive response (2 to 3 times control mutation rate) in 2 of 5 strains in the Ames bacterial mutagenicity assay. Bupropion produced an increase in chromosomal aberrations in 1 of 3 *in vivo* rat bone marrow cytogenetic studies.

There were no effects on male and female fertility when rats were administered oral doses of bupropion up to 300 mg/kg/day (approximately 7 times the MRHD on a  $mg/m^2$  basis) to females prior to mating and either through Day 13 of gestation or through lactation, and to males for 60 days prior to and through mating. However, doses of 200 mg/kg/day (approximately 5 times the MRHD on a  $mg/m^2$  basis) or greater, caused transient ataxia or behavioral changes in adult female rats. There were also no adverse effects on fertility, reproduction, or growth and development of male or female offspring.

## **14 CLINICAL STUDIES**

The efficacy of the immediate-release formulation of bupropion in the treatment of major depressive disorder was established in two 4-week, placebo-controlled trials in adult inpatients with MDD (Trials 1 and 2 in Table 6) and in one 6-week, placebo-controlled trial in adult outpatients with MDD (Trial 3 in Table 6). In the first trial, the dose range of bupropion was 300 mg to 600 mg/day administered in divided doses; 78% of subjects were treated with doses of 300 mg to 450 mg/day. This trial demonstrated the effectiveness of the immediate-release formulation of bupropion by the Hamilton Depression Rating Scale (HDRS) total score, the HDRS depressed mood item (Item 1), and the Clinical Global Impressions severity score (CGI-S). The second trial included 2

doses of the immediate-release formulation of bupropion (300 and 450-mg/day) and placebo. This trial demonstrated the effectiveness of the immediate-release formulation of bupropion, but only at the 450 mg/day dose. The efficacy results were significant for the HDRS total score and the CGI-S score, but not for HDRS Item 1. In the third trial, outpatients were treated with 300 mg/day of the immediate-release formulation of bupropion. This trial demonstrated the efficacy of the immediate-release formulation of bupropion as measured by the HDRS total score, the HDRS item 1, the Montgomery-Asberg Depression Rating Scale (MADRS), the CGI-S score, and the CGI-Improvement Scale (CGI-I) score.

<b>Table 6. Efficacy of Immediate-Release Bupropion for the Treatment of Major Depressive Disorder</b>				
<b>Trial Number</b>	<b>Treatment Group</b>	<b>Primary Efficacy Measure: HDRS</b>		
		<b>Mean Baseline Score (SD)</b>	<b>LS Mean Score at Endpoint Visit (SE)</b>	<b>Placebo-subtracted Difference <sup>a</sup> (95% CI)</b>
Trial 1	Immediate-Release Bupropion 300 mg/day to 600 mg/day <sup>b</sup> (n = 48)	28.5 (5.1)	14.9 (1.3)	-4.7 (-8.8, -0.6)
	Placebo (n = 27)	29.3 (7.0)	19.6 (1.6)	--
		<b>Mean Baseline Score (SD)</b>	<b>LS Mean Change from Baseline (SE)</b>	<b>Placebo-subtracted Difference <sup>a</sup> (95% CI)</b>
Trial 2	Immediate-Release Bupropion 300 mg/day (n = 36)	32.4 (5.9)	-15.5 (1.7)	-4.1
	Immediate-Release Bupropion 450 mg/day <sup>b</sup> (n = 34)	34.8 (4.6)	-17.4 (1.7)	-5.9 (-10.5, -1.4)
	Placebo (n = 39)	32.9 (5.4)	-11.5 (1.6)	--
Trial 3	Immediate-Release Bupropion 300 mg/day <sup>b</sup> (n = 110)	26.5 (4.3)	-12.0 (NA)	-3.9 (-5.7, -1.0)
	Placebo (n = 106)	27.0 (3.5)	-8.7 (NA)	--

n: sample size; SD: standard deviation; SE: standard error; LS Mean: least-squares mean; CI: unadjusted confidence interval included for doses that were demonstrated to be effective; NA: not available.

<sup>a</sup>Difference (drug minus placebo) in least-squares estimates with respect to the primary efficacy parameter. For Trial 1, it refers to the mean score at the endpoint visit; for Trials 2 and 3, it refers to the mean change from baseline to the endpoint visit.

<sup>b</sup>Doses that are demonstrated to be statistically significantly superior to placebo.

Although there are not as yet independent trials demonstrating the antidepressant effectiveness of the sustained-release formulation of bupropion, trials have demonstrated the bioequivalence of the immediate-release and sustained-release forms of bupropion under steady-state conditions, i.e., bupropion sustained-release 150 mg twice daily was shown to be bioequivalent to 100 mg 3 times daily of the immediate-release formulation of bupropion, with regard to both rate and extent of absorption, for parent drug and metabolites.

In a longer-term trial, outpatients meeting DSM-IV criteria for major depressive disorder, recurrent type, who had responded during an 8-week open trial on bupropion hydrochloride extended-release tablets (SR) (150 mg twice daily) were randomized to continuation of their same dose of bupropion hydrochloride extended-release tablets (SR) or placebo for up to 44 weeks of observation for relapse. Response during the open phase was defined as CGI Improvement score of 1 (very much improved) or 2 (much improved) for each of the final 3 weeks. Relapse during the double-blind phase was defined as the investigator's judgment that drug treatment was needed for worsening depressive symptoms. Patients receiving continued treatment with bupropion hydrochloride extended-release tablets (SR) experienced significantly lower relapse rates over the subsequent 44 weeks compared with those receiving placebo.

## **16 HOW SUPPLIED/STORAGE AND HANDLING**

Bupropion hydrochloride extended-release tablets, USP (SR), 100 mg of bupropion hydrochloride, are blue, blackberry flavored, round, biconvex, film coated tablets, debossed with 'SG, 174' on one side and plain on other side in

Bottles of 60 (NDC 43598-751-60) Tablets  
Bottles of 100 (NDC 43598-751-01) Tablets  
Bottles of 500 (NDC 43598-751-05) Tablets

Bupropion hydrochloride extended-release tablets, USP (SR), 150 mg of bupropion hydrochloride, are purple, blackberry flavored, round, biconvex, film coated tablets, debossed with 'SG, 175' on one side and plain on other side in

Bottles of 60 (NDC 43598-752-60) Tablets  
Bottles of 100 (NDC 43598-752-01) Tablets  
Bottles of 500 (NDC 43598-752-05) Tablets

Bupropion hydrochloride extended-release tablets, USP (SR), 200 mg of bupropion hydrochloride, are pink, blackberry flavored, round, biconvex, film coated tablets, debossed with 'SG, 176' on one side and plain on other side in

Bottles of 60 (NDC 43598-753-60) Tablets

Store at 20° to 25°C (68° to 77°F) [see USP Controlled Room Temperature]. Dispense in a tight, light-resistant container with a child-resistant closure (as required). Protect from light and moisture.

## **17 PATIENT COUNSELING INFORMATION**

*Advise the patient to read the FDA-approved patient labeling ( Medication Guide) .*

Suicidal Thoughts and Behaviors

Instruct patients, their families, and/or their caregivers to be alert to the emergence of anxiety, agitation, panic attacks, insomnia, irritability, hostility, aggressiveness, impulsivity, akathisia (psychomotor restlessness), hypomania, mania, other unusual changes in behavior, worsening of depression, and suicidal ideation, especially early during antidepressant treatment and when the dose is adjusted up or down. Advise families and caregivers of patients to observe for the emergence of such symptoms on a day-to-day basis, since changes may be abrupt. Such symptoms should be reported to the patient's prescriber or healthcare professional, especially if they are severe, abrupt in onset, or were not part of the patient's presenting symptoms. Symptoms such as these may be associated with an increased risk for suicidal thinking and behavior and indicate a need for very close monitoring and possibly changes in the medication.

#### Neuropsychiatric Adverse Events and Suicide Risk in Smoking Cessation Treatment

Although bupropion hydrochloride extended-release tablets (SR) is not indicated for smoking cessation treatment, it contains the same active ingredient as ZYBAN which is approved for this use. Inform patients that some patients have experienced changes in mood (including depression and mania), psychosis, hallucinations, paranoia, delusions, homicidal ideation, aggression, hostility, agitation, anxiety, and panic, as well as suicidal ideation and suicide when attempting to quit smoking while taking bupropion. Instruct patients to discontinue bupropion and contact a healthcare professional if they experience such symptoms [*see Warnings and Precautions ( 5.2), Adverse Reactions ( 6.2)*].

#### Severe Allergic Reactions

Educate patients on the symptoms of hypersensitivity and to discontinue bupropion hydrochloride extended-release tablets (SR) if they have a severe allergic reaction.

#### Seizure

Instruct patients to discontinue and not restart bupropion hydrochloride extended-release tablets (SR) if they experience a seizure while on treatment. Advise patients that the excessive use or abrupt discontinuation of alcohol, benzodiazepines, antiepileptic drugs, or sedatives/hypnotics can increase the risk of seizure. Advise patients to minimize or avoid use of alcohol.

As the dose is increased during initial titration to doses above 150 mg per day, instruct patients to take bupropion hydrochloride extended-release tablets (SR) in 2 divided doses, preferably with at least 8 hours between successive doses, to minimize the risk of seizures.

#### Angle-Closure Glaucoma

Patients should be advised that taking bupropion hydrochloride extended-release tablets (SR) can cause mild pupillary dilation, which in susceptible individuals, can lead to an episode of angle-closure glaucoma. Pre-existing glaucoma is almost always open-angle glaucoma because angle-closure glaucoma, when diagnosed, can be treated definitively with iridectomy. Open-angle glaucoma is not a risk factor for angle-closure glaucoma. Patients may wish to be examined to determine whether they are susceptible to angle closure, and have a prophylactic procedure (e.g., iridectomy), if they are susceptible [*see Warnings and Precautions ( 5.7)*].

#### Bupropion-Containing Products

Educate patients that bupropion hydrochloride extended-release tablets (SR) contains the same active ingredient (bupropion hydrochloride) found in ZYBAN, which is used as an aid to smoking cessation treatment, and that bupropion hydrochloride extended-release tablets (SR) should not be used in combination with ZYBAN or any other medications that contain bupropion (such as WELLBUTRIN, the immediate-release formulation and WELLBUTRIN XL or FORFIVO XL, the extended-release formulations, and APLENZIN, the extended-release formulation of bupropion hydrobromide). In addition, there are a number of generic bupropion HCl products for the immediate-,

sustained-, and extended-release formulations.

#### Potential for Cognitive and Motor Impairment

Advise patients that any CNS-active drug like bupropion hydrochloride extended-release tablets (SR) may impair their ability to perform tasks requiring judgment or motor and cognitive skills. Advise patients that until they are reasonably certain that bupropion hydrochloride extended-release tablets (SR) does not adversely affect their performance, they should refrain from driving an automobile or operating complex, hazardous machinery. Bupropion hydrochloride extended-release tablets (SR) may lead to decreased alcohol tolerance.

#### Concomitant Medications

Counsel patients to notify their healthcare provider if they are taking or plan to take any prescription or over-the-counter drugs because bupropion hydrochloride extended-release tablets (SR) and other drugs may affect each others' metabolisms.

#### Pregnancy

Advise patients to notify their healthcare provider if they become pregnant or intend to become pregnant during therapy with bupropion hydrochloride extended-release tablets (SR). Advise patients that there is a pregnancy exposure registry that monitors pregnancy outcomes in women exposed to bupropion hydrochloride extended-release tablets (SR) during pregnancy [*see Use in Specific Populations ( 8.1)*] .

#### Storage Information

Instruct patients to store bupropion hydrochloride extended-release tablets (SR) at 20° to 25°C (68° to 77°F) [*see USP Controlled Room Temperature*]. Dispense in a tight, light-resistant container with a child-resistant closure (as required). Protect from light and moisture.

#### Administration Information

Instruct patients to swallow bupropion hydrochloride extended-release tablets (SR) whole so that the release rate is not altered. Do not chew, divide, or crush tablets; they are designed to slowly release drug in the body. When patients take more than 150mg/day, instruct them to take bupropion hydrochloride extended-release tablets (SR) in 2 doses at least 8 hours apart, to minimize the risk of seizures. Instruct patients if they miss a dose, not to take an extra tablet to make up for the missed dose and to take the next tablet at the regular time because of the dose-related risk of seizure. Instruct patients that bupropion hydrochloride extended-release tablets (SR) may have an odor. Bupropion hydrochloride extended-release tablets (SR) can be taken with or without food.

WELLBUTRIN, WELLBUTRIN XL, and ZYBAN are registered trademarks of the GSK group of companies.

The other brands listed are the trademarks of their respective owners.

You can ask your pharmacist or doctor for information about **bupropion hydrochloride extended-release tablets, (SR)** or call 1-888-375-3784.

Dispense the Medication Guide available at:

<https://www.drreddys.com/pi/medguide/BupropionER-Rev1.pdf>

Rx Only

Manufactured by:

**ScieGen Pharmaceuticals, Inc.**

Hauppauge, NY 11788, USA

Manufactured for:

**Dr. Reddy's Laboratories Inc.**

Princeton, New Jersey 08540, USA

Issued: 5/2024

Dispense the Medication Guide available at: <https://sciegenpharm.com/medication-guide/>

## **MEDICATION GUIDE**

### **Bupropion Hydrochloride Extended-Release Tablets, USP (SR)**

(bue proe' pee on hye" droe klor' ide)

**IMPORTANT: Be sure to read the three sections of this Medication Guide. The first section is about the risk of suicidal thoughts and actions with antidepressant medicines; the second section is about the risk of changes in thinking and behavior, depression and suicidal thoughts or actions with medicines used to quit smoking; and the third section is entitled “What Other Important Information Should I Know About bupropion hydrochloride extended-release tablets, (SR)?”**

#### **Antidepressant Medicines, Depression and Other Serious Mental Illnesses, and Suicidal Thoughts or Actions**

This section of the Medication Guide is only about the risk of suicidal thoughts and actions with antidepressant medicines.

**What is the most important information I should know about antidepressant medicines, depression and other serious mental illnesses, and suicidal thoughts or actions?**

- 1. Antidepressant medicines may increase the risk of suicidal thoughts or actions in some children, teenagers, and young adults within the first few months of treatment.**
- 2. Depression or other serious mental illnesses are the most important causes of suicidal thoughts and actions. Some people may have a particularly high risk of having suicidal thoughts or actions.** These include people who have (or have a family history of) bipolar illness (also called manic-depressive illness) or suicidal thoughts or actions.
- 3. How can I watch for and try to prevent suicidal thoughts and actions in myself or a family member?**
  - Pay close attention to any changes, especially sudden changes, in mood, behaviors, thoughts, or feelings. This is very important when an antidepressant medicine is started or when the dose is changed.
  - Call your healthcare provider right away to report new or sudden changes in mood, behavior, thoughts, or feelings.
  - Keep all follow-up visits with your healthcare provider as scheduled. Call the healthcare provider between visits as needed, especially if you have concerns about symptoms.

**Call your healthcare provider right away if you or your family member has any of the following symptoms, especially if they are new, worse, or worry you:**

- 
- |                                     |                                                       |
|-------------------------------------|-------------------------------------------------------|
| • thoughts about suicide or dying   | • trouble sleeping (insomnia)                         |
| • attempts to commit suicide        | • new or worse irritability                           |
| • new or worse depression           | • acting aggressive, being angry, or violent          |
| • new or worse anxiety              | • acting on dangerous impulses                        |
| • feeling very agitated or restless | • an extreme increase in activity and talking (mania) |
| • panic attacks                     | • other unusual changes in behavior or mood           |
- 

**What else do I need to know about antidepressant medicines?**

- **Never stop an antidepressant medicine without first talking to a healthcare provider.** Stopping an antidepressant medicine suddenly can cause other symptoms.

- **Antidepressants are medicines used to treat depression and other illnesses.** It is important to discuss all the risks of treating depression and also the risks of not treating it. Patients and their families or other caregivers should discuss all treatment choices with the healthcare provider, not just the use of antidepressants.
- **Antidepressant medicines have other side effects.** Talk to the healthcare provider about the side effects of the medicine prescribed for you or your family member.
- **Antidepressant medicines can interact with other medicines.** Know all of the medicines that you or your family member takes. Keep a list of all medicines to show the healthcare provider. Do not start new medicines without first checking with your healthcare provider.

It is not known if bupropion hydrochloride extended-release tablets (SR) are safe and effective in children under the age of 18.

### **Quitting Smoking, Quit-Smoking Medications, Changes in Thinking and Behavior, Depression, and Suicidal Thoughts or Actions**

This section of the Medication Guide is only about the risk of changes in thinking and behavior, depression and suicidal thoughts or actions with drugs used to quit smoking.

Although bupropion hydrochloride extended-release tablets, (SR) is not a treatment for quitting smoking, it contains the same active ingredient (bupropion hydrochloride) as ZYBAN which is used to help patients quit smoking.

#### **Talk to your healthcare provider or your family member’s healthcare provider about:**

- all risks and benefits of quit-smoking medicines
- all treatment choices for quitting smoking

When you try to quit smoking, with or without bupropion you may have symptoms that may be due to nicotine withdrawal, including:

- 
- |                    |                            |                        |
|--------------------|----------------------------|------------------------|
| • urge to smoke    | • frustration              | • restlessness         |
| • depressed mood   | • anger                    | • decreased heart rate |
| • trouble sleeping | • feeling anxious          | • increased appetite   |
| • irritability     | • difficulty concentrating | • weight gain          |
- 

Some people have even experienced suicidal thoughts when trying to quit smoking without medication. Sometimes quitting smoking can lead to worsening of mental health problems that you already have, such as depression.

Some people have had serious side effect while taking bupropion to help them quit smoking, including: **New or worse mental health problems, such as changes in behavior or thinking, aggression, hostility, agitation, depression, or suicidal thoughts or actions.** Some people had these symptoms when they began taking bupropion, and others developed them after several weeks of treatment, or after stopping bupropion. These symptoms happened more often in people who had a history of mental health problems before taking bupropion than in people without a history of mental health problems.

Stop taking bupropion hydrochloride extended-release tablets, (SR) and call your healthcare provider right away if you, your family, or caregiver notice any of these symptoms. Work with your healthcare provider to decide whether you should continue to take bupropion hydrochloride extended-release tablets, (SR). In many people, these symptoms went away after stopping bupropion hydrochloride extended-release tablets, (SR), but in some people, symptoms continued after stopping bupropion hydrochloride

extended-release tablets, (SR). It is important for you to follow-up with your healthcare provider until your symptoms go away. **Before taking bupropion hydrochloride extended-release tablets, (SR)** tell your healthcare provider if you have ever had depression or other mental health problems. You should also tell your healthcare provider about any symptoms you had during other times you tried to quit smoking, with or without bupropion.

### **What Other Important Information Should I Know About bupropion hydrochloride extended-release tablets, (SR)?**

- **Seizures: There is a chance of having a seizure (convulsion, fit) with bupropion hydrochloride extended-release tablets, (SR), especially in people:**
  - with certain medical problems.
  - who take certain medicines.

The chance of having seizures increases with higher doses of bupropion hydrochloride extended-release tablets, (SR). For more information, see the sections “Who should not take bupropion hydrochloride extended-release tablets, (SR)?” and “What should I tell my healthcare provider before taking bupropion hydrochloride extended-release tablets, (SR)?” Tell your healthcare provider about all of your medical conditions and all the medicines you take. Do not take any other medicines while you are taking bupropion hydrochloride extended-release tablets, (SR) unless your healthcare provider has said it is okay to take them.

**If you have a seizure while taking bupropion hydrochloride extended-release tablets, (SR), stop taking the tablets and call your healthcare provider right away.** Do not take bupropion hydrochloride extended-release tablets, (SR) again if you have a seizure.

- **High blood pressure (hypertension). Some people get high blood pressure, that can be severe, while taking bupropion hydrochloride extended-release tablets, (SR).** The chance of high blood pressure may be higher if you also use nicotine replacement therapy (such as a nicotine patch) to help you stop smoking (see the section of this Medication Guide called “How should I take bupropion hydrochloride extended-release tablets, (SR)?”).
- **Manic episodes.** Some people may have periods of mania while taking bupropion hydrochloride extended-release tablets (SR), including:
  - Greatly increased energy
  - Severe trouble sleeping
  - Racing thoughts
  - Reckless behavior
  - Unusually grand ideas
  - Excessive happiness or irritability
  - Talking more or faster than usual

If you have any of the above symptoms of mania, call your healthcare provider.

- **Unusual thoughts or behaviors.** Some patients have unusual thoughts or behaviors while taking bupropion hydrochloride extended-release tablets, (SR), including delusions (believe you are someone else), hallucinations (seeing or hearing things that are not there), paranoia (feeling that people are against you), or feeling confused. If this happens to you, call your healthcare provider.
- **Visual problems.**
  - eye pain
  - changes in vision
  - swelling or redness in or around the eye

Only some people are at risk for these problems. You may want to undergo an eye examination to see if you are at risk and receive preventative treatment if you are.



- **Severe allergic reactions. Some people can have severe allergic reactions to bupropion hydrochloride extended-release tablets (SR). Stop taking bupropion hydrochloride extended-release tablets (SR) and call your healthcare provider right away** if you get a rash, itching, hives, fever, swollen lymph glands, painful sores in the mouth or around the eyes, swelling of the lips or tongue, chest pain, or have trouble breathing. These could be signs of a serious allergic reaction.

### **What are bupropion hydrochloride extended-release tablets, (SR)?**

Bupropion hydrochloride extended-release tablets, (SR) are a prescription medicine used to treat adults with a certain type of depression called major depressive disorder.

### **Who should not take bupropion hydrochloride extended-release tablets, (SR)?**

#### **Do not take bupropion hydrochloride extended-release tablets, (SR) if you:**

- have or had a seizure disorder or epilepsy.
- have or had an eating disorder such as anorexia nervosa or bulimia.
- **are taking any other medicines that contain bupropion, including ZYBAN (used to help people stop smoking) WELLBUTRIN<sup>®</sup>, WELLBUTRIN XL<sup>®</sup>, APLENZIN<sup>®</sup>, FORFIVO XL<sup>®</sup>.** Bupropion is the same active ingredient that is in bupropion hydrochloride extended-release tablets (SR).
- drink a lot of alcohol and abruptly stop drinking, or use medicines called sedatives (these make you sleepy), benzodiazepines, or anti-seizure medicines, and you stop using them all of a sudden.
- take a monoamine oxidase inhibitor (MAOI). Ask your healthcare provider or pharmacist if you are not sure if you take an MAOI, including the antibiotic linezolid.
  - do not take an MAOI within 2 weeks of stopping bupropion hydrochloride extended-release tablets, (SR) unless directed to do so by your healthcare provider.
  - do not start bupropion hydrochloride extended-release tablets, (SR) if you stopped taking an MAOI in the last 2 weeks unless directed to do so by your healthcare provider.
- are allergic to the active ingredient in bupropion hydrochloride extended-release tablets, (SR), bupropion, or to any of the inactive ingredients. See the end of this Medication Guide for a complete list of ingredients in bupropion hydrochloride extended-release tablets, (SR).

### **What should I tell my healthcare provider before taking bupropion hydrochloride extended-release tablets, (SR)?**

Tell your healthcare provider if you have ever had depression, suicidal thoughts or actions, or other mental health problems. See “Antidepressant Medicines, Depression and Other Serious Mental Illnesses, and Suicidal Thoughts or Actions.”

- **Tell your healthcare provider about your other medical conditions including if you:**
  - have liver problems, especially cirrhosis of the liver.
  - have kidney problems.
  - have, or have had, an eating disorder, such as anorexia nervosa or bulimia.
  - have had a head injury.
  - have had a seizure (convulsion, fit).
  - have a tumor in your nervous system (brain or spine).
  - have had a heart attack, heart problems, or high blood pressure.
  - are a diabetic taking insulin or other medicines to control your blood sugar.
  - drink alcohol.
  - abuse prescription medicines or street drugs.
  - are pregnant or plan to become pregnant. Talk to your healthcare provider about

the risk to your unborn baby if you take bupropion hydrochloride extended-release tablets, (SR) during pregnancy.

- Tell your healthcare provider if you become pregnant or think you are pregnant during treatment with bupropion hydrochloride extended-release tablets, (SR).
- If you become pregnant during treatment with bupropion hydrochloride extended-release tablets, (SR), talk to your healthcare provider about registering with the National Pregnancy Registry for Antidepressants. You can register by calling 1-844-405-6185.
- are breastfeeding or plan to breastfeed during treatment with bupropion hydrochloride extended-release tablets, (SR). Bupropion hydrochloride passes into your milk. Talk to your healthcare provider about the best way to feed your baby during treatment with bupropion hydrochloride extended-release tablets, (SR).

**Tell your healthcare provider about all the medicines you take**, including prescription and over-the-counter medicines, vitamins, and herbal supplements. Many medicines increase your chances of having seizures or other serious side effects if you take them while you are taking bupropion hydrochloride extended-release tablets, (SR).

### **How should I take bupropion hydrochloride extended-release tablets, (SR)?**

- Take bupropion hydrochloride extended-release tablets, (SR) exactly as prescribed by your healthcare provider. Do not change your dose or stop taking bupropion hydrochloride extended-release tablets, (SR) without talking to your healthcare provider first.
- **Swallow bupropion hydrochloride extended-release tablets, (SR) whole. Do not chew, cut, or crush bupropion hydrochloride extended-release tablets, (SR).** If you do, the medicine will be released into your body too quickly. If this happens you may be more likely to get side effects including seizures. **Tell your healthcare provider if you cannot swallow tablets.**
- Bupropion hydrochloride extended-release tablets, (SR) tablets may have an odor. This is normal.
- Take bupropion hydrochloride extended-release tablets, (SR) at the same time each day.
- Take your doses of bupropion hydrochloride extended-release tablets, (SR) at least 8 hours apart.
- You may take bupropion hydrochloride extended-release tablets, (SR) with or without food.
- If you miss a dose, do not take an extra dose to make up for the dose you missed. Wait and take your next dose at the regular time. **This is very important.** Too much bupropion hydrochloride extended-release tablets, (SR) can increase your chance of having a seizure.
- If you take too much bupropion hydrochloride extended-release tablets, (SR), or overdose, call your local emergency room or poison control center right away.
- **Do not take any other medicines while taking bupropion hydrochloride extended-release tablets, (SR) unless your healthcare provider has told you it is okay.**
- If you are taking bupropion hydrochloride extended-release tablets, (SR) for the treatment of major depressive disorder, it may take several weeks for you to feel that bupropion hydrochloride extended-release tablets, (SR) is working. Once you feel better, it is important to keep taking bupropion hydrochloride extended-release tablets, (SR) exactly as directed by your healthcare provider. Call your healthcare provider if you do not feel bupropion hydrochloride extended-release tablets, (SR) is working for you.

### **What should I avoid while taking bupropion hydrochloride extended-release tablets, (SR)?**

- Limit or avoid using alcohol during treatment with bupropion hydrochloride extended-release tablets, (SR). If you usually drink a lot of alcohol, talk with your healthcare

provider before suddenly stopping. If you suddenly stop drinking alcohol, you may increase your chance of having seizures.

- Do not drive a car or use heavy machinery until you know how bupropion hydrochloride extended-release tablets, (SR) affects you. Bupropion hydrochloride extended-release tablets, (SR) can affect your ability to do these things safely.

### **What are possible side effects of bupropion hydrochloride extended-release tablets, (SR)?**

Bupropion hydrochloride extended-release tablets, (SR) can cause serious side effects. See the sections at the beginning of this Medication Guide for information about serious side effects of bupropion hydrochloride extended-release tablets.

The most common side effects of bupropion hydrochloride extended-release tablets, (SR) include

- headache
- dizziness
- dry mouth
- sore throat
- nausea
- constipation
- trouble sleeping

If you have nausea, take your medicine with food. If you have trouble sleeping, do not take your medicine too close to bedtime.

Tell your healthcare provider right away about any side effects that bother you.

These are not all the possible side effects of bupropion hydrochloride extended-release tablets (SR). For more information, ask your healthcare provider or pharmacist.

Call your doctor for medical advice about side effects. You may report side effects to FDA at 1-800-FDA-1088.

You may also report side effects to Dr.Reddy's Laboratories Inc., at 1-888-375-3784.

### **How should I store bupropion hydrochloride extended-release tablets, (SR)?**

- Store bupropion hydrochloride extended-release tablets, (SR) at room temperature between 20° and 25°C (68° to 77°F).
- Keep bupropion hydrochloride extended-release tablets, (SR) dry and out of the light.

### **Keep bupropion hydrochloride extended-release tablets, (SR) and all medicines out of the reach of children.**

### **General Information about the safe and effective use of bupropion hydrochloride extended-release tablets, (SR).**

Medicines are sometimes prescribed for purposes other than those listed in a Medication Guide. Do not use bupropion hydrochloride extended-release tablets, (SR) for a condition for which it was not prescribed. Do not give bupropion hydrochloride extended-release tablets, (SR) to other people, even if they have the same symptoms you have. It may harm them.

If you take a urine drug screening test, bupropion hydrochloride extended-release tablets, (SR) may make the test result positive for amphetamines. If you tell the person giving you the drug screening test that you are taking bupropion hydrochloride extended-release tablets, (SR), they can do a more specific drug screening test that should not have this problem.

This Medication Guide summarizes important information about bupropion hydrochloride extended-release tablets, (SR). If you would like more information, talk with your healthcare provider. You can ask your healthcare provider or pharmacist for information about bupropion hydrochloride extended-release tablets, (SR) that is written for healthcare professionals.

For more information about bupropion hydrochloride extended-release tablets, (SR), call Dr. Reddy's Laboratories Inc., at 1-888-375-3784.

### **What are the ingredients in bupropion hydrochloride extended-release tablets, USP (SR)?**

Active ingredient: bupropion hydrochloride USP.

Inactive ingredients: copovidone, cysteine hydrochloride, hypromellose, magnesium stearate, microcrystalline cellulose, polyethylene glycol, polysorbate 80 and titanium dioxide. In addition, the 100 mg tablet contains FD&C Blue No. 1 Brilliant Blue FCF Aluminium Lake, the 150 mg tablet contains FD&C Blue No. 2 Indigo Carmine Aluminium Lake and FD&C Red No. 40 Allura Red AC Aluminium Lake, and the 200 mg tablet contains FD&C Red No. 40 Allura Red AC Aluminium Lake. In addition, flavoring agent contains dextrose, ethyl alcohol, gum arabic, propylene glycol and silicon dioxide.

This Medication Guide has been approved by the U.S. Food and Drug Administration.

WELLBUTRIN, WELLBUTRIN XL, and ZYBAN are registered trademarks of the GSK group of companies. The other brands listed are the trademarks of their respective owners.

You can ask your pharmacist or doctor for information about **bupropion hydrochloride extended-release tablets, (SR)** or call 1-888-375-3784.

Rx Only

Manufactured by:

**ScieGen Pharmaceuticals, Inc.**  
Hauppauge, NY 11788, USA

Manufactured for:

**Dr. Reddy's Laboratories Inc.**  
Princeton, New Jersey 08540, USA

Issued: 5/2024

### **Package/Label Display Panel**

NDC 43598-751-60

### **Twice-A-Day (After Initial Titration)**

**buPROPion HCl  
Extended-Release  
Tablets, USP (SR)**

**100 mg**

**PHARMACIST: Dispense the accompanying  
Medication Guide to each patient.**

**WARNING: Do not use in combination  
with ZYBAN<sup>®</sup> or other medicines  
that contain bupropion hydrochloride.**

Rx Only

**60 Tablets**

**Dr.Reddy's**

NDC 43598-751-60

Twice-A-Day (After Initial Titration)

**buPROPion HCl**  
**Extended-Release**  
**Tablets, USP (SR)**

**100 mg**

PHARMACIST: Dispense the accompanying Medication Guide to each patient.

**WARNING: Do not use in combination with ZYBAN® or any other medicines that contain bupropion hydrochloride.**

Rx Only  
**60 Tablets**

Dr.Reddy's

Each extended-release tablet contains: 100 mg bupropion hydrochloride, USP. USUAL DOSAGE: Read accompanying prescribing information. Store at 20° to 25°C (68° to 77°F) [see USP controlled room temperature]. Dispense in a tight, light-resistant container with a child-resistant closure (as required). Protect from light and moisture.

Print Medication Guide at: <https://www.drreddy.com/pi/med/guide/BupropionER-Rev1.pdf>  
 Keep this and all medication out of the reach of children.  
 ZYBAN® is a registered trademark of GlaxoSmithKline.  
 Manufactured By: SciGen Pharmaceuticals, Inc.  
 Hightstown, NJ 08520  
 Manufactured For: Dr. Reddy's Laboratories, Inc.  
 Princeton, NJ 08540

Rev: 04/23

3 4 3 5 9 8 7 5 1 6 0 3

No Varnish

NDC 43598-751-01

**Twice-A-Day (After Initial Titration)**

**buPROPion HCl**  
**Extended-Release**  
**Tablets, USP (SR)**

**100 mg**

**PHARMACIST: Dispense the accompanying Medication Guide to each patient.**

**WARNING: Do not use in combination with ZYBAN® or any other medicines that contain bupropion hydrochloride.**

Rx Only

**100 Tablets**

**Dr.Reddy's**

NDC 43598-751-01

Twice-A-Day (After Initial Titration)

**buPROPion HCl**  
**Extended-Release**  
**Tablets, USP (SR)**

**100 mg**

PHARMACIST: Dispense the accompanying Medication Guide to each patient.

**WARNING: Do not use in combination with ZYBAN® or any other medicines that contain bupropion hydrochloride.**

Rx Only  
**100 Tablets**

Dr.Reddy's

Each extended-release tablet contains: 100 mg bupropion hydrochloride, USP. USUAL DOSAGE: Read accompanying prescribing information. Store at 20° to 25°C (68° to 77°F) [see USP controlled room temperature]. Dispense in a tight, light-resistant container with a child-resistant closure (as required). Protect from light and moisture.

Print Medication Guide at: <https://www.drreddy.com/pi/med/guide/BupropionER-Rev1.pdf>  
 Keep this and all medication out of the reach of children.  
 ZYBAN® is a registered trademark of GlaxoSmithKline.  
 Manufactured By: SciGen Pharmaceuticals, Inc.  
 Hightstown, NJ 08520  
 Manufactured For: Dr. Reddy's Laboratories, Inc.  
 Princeton, NJ 08540

Rev: 04/23

3 4 3 5 9 8 7 5 1 0 1 6

No Varnish

NDC 43598-751-05

**Twice-A-Day (After Initial Titration)**

**buPROPion HCl**  
**Extended-Release**  
**Tablets, USP (SR)**

100 mg

**PHARMACIST: Dispense the accompanying Medication Guide to each patient.**

**WARNING: Do not use in combination with ZYBAN® or any other medicines that contain bupropion hydrochloride.**

Rx Only

500 Tablets

NDC 43598-751-05

Twice-A-Day (After Initial Titration)

**buPROPion HCl**  
**Extended-Release**  
**Tablets, USP (SR)**

**100 mg**

PHARMACIST: Dispense the accompanying Medication Guide to each patient.

**WARNING: Do not use in combination with ZYBAN® or any other medicines that contain bupropion hydrochloride.**

Rx Only  
500 Tablets

Each extended-release tablet contains 100 mg bupropion hydrochloride, USP.  
**USUAL DOSAGE:** Read accompanying prescribing information.  
Store at 20° to 25°C (68° to 77°F); see USP controlled room temperature. Dispense in a tight, light-resistant container with a child-resistant closure (as required).  
Protect from light and moisture.

Print Medication Guide at:  
<https://www.drreddys.com/pd/mgd/guide/bupropionERRev01.pdf>  
Keep this and all medication out of the reach of children.  
ZYBAN® is a registered trademark of J. Janssen Pharmaceutica.  
Manufactured by: Solstice Pharmaceuticals, Inc.  
Hempstead, NY 11788  
Manufactured for: Dr. Reddy's Laboratories, Inc.  
Princeton, NJ 08540

Rev: 04/23

4 3 5 9 8 7 5 1 0 5

No Varnish

NDC 43598-752-60

**Twice-A-Day (After Initial Titration)**

**buPROPion HCl**  
**Extended-Release**  
**Tablets, USP (SR)**

150 mg

**PHARMACIST: Dispense the accompanying Medication Guide to each patient.**

**WARNING: Do not use in combination with ZYBAN® or any other medicines that contain bupropion hydrochloride.**

Rx Only

60 Tablets

Dr.Reddy's

NDC 43598-752-60

Twice-A-Day (After Initial Titration)

**buPROPion HCl**  
**Extended-Release**  
**Tablets, USP (SR)**  
**150 mg**

PHARMACIST: Dispense the accompanying Medication Guide to each patient.

**WARNING: Do not use in combination with ZYBAN® or any other medicines that contain bupropion hydrochloride.**

Rx Only  
**60 Tablets**

**Dr.Reddy's**

Each extended-release tablet contains: 150 mg bupropion hydrochloride, USP. USUAL DOSE: Read accompanying prescribing information. Store at 20° to 25°C (68° to 77°F) [see USP controlled room temperature]. Dispense in a tight, light-resistant container with a child-resistant closure (as required). Protect from light and moisture.

Print Medication Guide at: <https://www.drreddy.com/pi/medguide/BupropionER-Rev1.pdf>  
 Keep this and all medication out of the reach of children. ZYBAN® is a registered trademark of GlaxoSmithKline.  
 Manufactured By: SciGen Pharmaceuticals, Inc. Hightstown, NJ 08520  
 Manufactured For: Dr. Reddy's Laboratories, Inc. Princeton, NJ 08540 Rev: 04/23

3 4 3 5 9 8 1 7 5 2 6 0 0

**No Varnish**

NDC 43598-752-01

**Twice-A-Day (After Initial Titration)**

**buPROPion HCl**  
**Extended-Release**  
**Tablets, USP (SR)**

**150 mg**

**PHARMACIST: Dispense the accompanying Medication Guide to each patient.**

**WARNING: Do not use in combination with ZYBAN® or any other medicines that contain bupropion hydrochloride.**

Rx Only

**100 Tablets**

**Dr.Reddy's**

NDC 43598-752-01

Twice-A-Day (After Initial Titration)

**buPROPion HCl**  
**Extended-Release**  
**Tablets, USP (SR)**  
**150 mg**

PHARMACIST: Dispense the accompanying Medication Guide to each patient.

**WARNING: Do not use in combination with ZYBAN® or any other medicines that contain bupropion hydrochloride.**

Rx Only  
**100 Tablets**

**Dr.Reddy's**

Each extended-release tablet contains: 150 mg bupropion hydrochloride, USP. USUAL DOSE: Read accompanying prescribing information. Store at 20° to 25°C (68° to 77°F) [see USP controlled room temperature]. Dispense in a tight, light-resistant container with a child-resistant closure (as required). Protect from light and moisture.

Print Medication Guide at: <https://www.drreddy.com/pi/medguide/BupropionER-Rev1.pdf>  
 Keep this and all medication out of the reach of children. ZYBAN® is a registered trademark of GlaxoSmithKline.  
 Manufactured By: SciGen Pharmaceuticals, Inc. Hightstown, NJ 08520  
 Manufactured For: Dr. Reddy's Laboratories, Inc. Princeton, NJ 08540 Rev: 04/23

3 4 3 5 9 8 1 7 5 2 0 1 3

**No Varnish**

NDC 43598-752-05

**Twice-A-Day (After Initial Titration)**

**buPROPion HCl**  
**Extended-Release**  
**Tablets, USP (SR)**

150 mg

**PHARMACIST: Dispense the accompanying Medication Guide to each patient.**

**WARNING: Do not use in combination with ZYBAN® or any other medicines that contain bupropion hydrochloride.**

Rx Only

500 Tablets

Dr.Reddy's

NDC 43598-752-05

Twice-A-Day (After Initial Titration)

**buPROPion HCl**  
Extended-Release  
Tablets, USP (SR)  
**150 mg**

PHARMACIST: Dispense the accompanying Medication Guide to each patient.

**WARNING: Do not use in combination with ZYBAN® or any other medicines that contain bupropion hydrochloride.**

Rx Only  
500 Tablets

Dr.Reddy's

Each extended-release tablet contains 150 mg bupropion hydrochloride, USP.  
USUAL DOSAGE: Read accompanying prescribing information.  
Store at 20° to 25°C (68° to 77°F) [see USP controlled room temperature]. Dispense in a tight, light-resistant container with a child-resistant closure (as required).  
Protect from light and moisture.  
Print Medication Guide at: <https://www.drreddys.com/pl/medguide/BupropionERRxv1.pdf>  
Keep this and all medication out of the reach of children.  
ZYBAN® is a registered trademark of Eli Lilly and Company.  
Manufactured By: Soligen Pharmaceuticals, Inc., Hightstown, NJ 08520  
Manufactured For: Dr. Reddy's Laboratories, Inc., Princeton, NJ 08540  
Rev: 04/23

43598752051

No Varnish

NDC 43598-753-60

**Twice-A-Day (After Initial Titration)**

**buPROPion HCl**  
Extended-Release  
Tablets, USP (SR)

200 mg

**PHARMACIST: Dispense the accompanying Medication Guide to each patient.**

**WARNING: Do not use in combination with ZYBAN® or any other medicines that contain bupropion hydrochloride.**

Rx Only

60 Tablets

Dr.Reddy's



NDC 43598-753-60

Twice-A-Day (After Initial Titration)

**buPROPion HCl**  
Extended-Release  
Tablets, USP (SR)  
200 mg

PHARMACIST: Dispense the accompanying Medication Guide to each patient.

**WARNING: Do not use in combination with ZYBAN® or any other medicines that contain bupropion hydrochloride.**

Rx Only  
60 Tablets

Dr.Reddy's

Each extended-release tablet contains:  
200 mg bupropion hydrochloride, USP.  
USUAL DOSE: Read accompanying prescribing information.  
Store at 20° to 25°C (68° to 77°F) [see USP controlled room temperature]. Dispense in a tight, light-resistant container with a child-resistant closure (as required).  
Protect from light and moisture.

Print Medication Guide at:  
<https://www.drreddys.com/pi/medguides/bupropioner.pdf>  
Keep this and all medication out of the reach of children.  
ZYBAN® is a registered trademark of GlaxoSmithKline.

Manufactured By: ScieGen Pharmaceuticals, Inc.  
Hempstead, NY 11788  
Manufactured For: Dr. Reddy's Laboratories, Inc.  
Princeton, NJ 08540  
Rev: 04/23

3 4359875360 7

No Varnish

## BUPROPION HYDROCHLORIDE SR

bupropion hydrochloride tablet, film coated, extended release

### Product Information

<b>Product Type</b>	HUMAN PRESCRIPTION DRUG	<b>Item Code (Source)</b>	NDC:43598-751
<b>Route of Administration</b>	ORAL		

### Active Ingredient/Active Moiety

Ingredient Name	Basis of Strength	Strength
<b>BUPROPION HYDROCHLORIDE</b> (UNII: ZG7E5POY8O) (BUPROPION - UNII:01ZG3TPX31)	BUPROPION HYDROCHLORIDE	100 mg

### Inactive Ingredients

Ingredient Name	Strength
<b>COPOVIDONE</b> (UNII: D9C330MD8B)	
<b>CYSTEINE HYDROCHLORIDE</b> (UNII: ZT934N0X4W)	
<b>HYPROMELLOSES</b> (UNII: 3NXW29V3WO)	
<b>MAGNESIUM STEARATE</b> (UNII: 70097M6I30)	
<b>CELLULOSE, MICROCRYSTALLINE</b> (UNII: OP1R32D61U)	
<b>POLYETHYLENE GLYCOL, UNSPECIFIED</b> (UNII: 3WJQ0SDW1A)	
<b>POLYSORBATE 80</b> (UNII: 6OZP39ZG8H)	
<b>TITANIUM DIOXIDE</b> (UNII: 15FIX9V2JP)	
<b>FD&amp;C BLUE NO. 1</b> (UNII: H3R47K3TBD)	
<b>DEXTRROSE, UNSPECIFIED FORM</b> (UNII: IY9XDZ35W2)	
<b>ALCOHOL</b> (UNII: 3K9958V90M)	
<b>ACACIA</b> (UNII: 5C5403N26O)	
<b>PROPYLENE GLYCOL</b> (UNII: 6DC9Q167V3)	
<b>SILICON DIOXIDE</b> (UNII: ETJ7Z6XBU4)	

### Product Characteristics

<b>Color</b>	blue	<b>Score</b>	no score
<b>Shape</b>	ROUND (biconvex)	<b>Size</b>	9mm
<b>Flavor</b>		<b>Imprint Code</b>	SG;174
<b>Contains</b>			

Packaging				
#	Item Code	Package Description	Marketing Start Date	Marketing End Date
1	NDC:43598-751-60	60 in 1 BOTTLE, PLASTIC; Type 0: Not a Combination Product	05/15/2018	
2	NDC:43598-751-01	100 in 1 BOTTLE, PLASTIC; Type 0: Not a Combination Product	05/15/2018	
3	NDC:43598-751-05	500 in 1 BOTTLE, PLASTIC; Type 0: Not a Combination Product	05/15/2018	

Marketing Information			
Marketing Category	Application Number or Monograph Citation	Marketing Start Date	Marketing End Date
ANDA	ANDA205794	05/15/2018	

BUPROPION HYDROCHLORIDE SR			
bupropion hydrochloride tablet, film coated, extended release			
Product Information			
Product Type	HUMAN PRESCRIPTION DRUG	Item Code (Source)	NDC:43598-752
Route of Administration	ORAL		
Active Ingredient/Active Moiety			
Ingredient Name		Basis of Strength	Strength
BUPROPION HYDROCHLORIDE (UNII: ZG7E5POY8O) (BUPROPION - UNII:01ZG3TPX31)		BUPROPION HYDROCHLORIDE	150 mg
Inactive Ingredients			
Ingredient Name			Strength
CELLULOSE, MICROCRYSTALLINE (UNII: OP1R32D61U)			
POLYETHYLENE GLYCOL, UNSPECIFIED (UNII: 3WJQ0SDW1A)			
POLYSORBATE 80 (UNII: 6OZP39ZG8H)			
TITANIUM DIOXIDE (UNII: 15FIX9V2JP)			
FD&C BLUE NO. 2 (UNII: L06K8R7DQK)			
FD&C RED NO. 40 (UNII: WZB9127XOA)			
DEXTRROSE, UNSPECIFIED FORM (UNII: IY9XDZ35W2)			
ALCOHOL (UNII: 3K9958V90M)			
ACACIA (UNII: 5C5403N26O)			
PROPYLENE GLYCOL (UNII: 6DC9Q167V3)			
SILICON DIOXIDE (UNII: ETJ7Z6XBU4)			
COPOVIDONE (UNII: D9C330MD8B)			
CYSTEINE HYDROCHLORIDE (UNII: ZT934N0X4W)			
HYPROMELLOSES (UNII: 3NXW29V3W0)			
MAGNESIUM STEARATE (UNII: 70097M6I30)			
Product Characteristics			
Color	purple	Score	no score
Shape	ROUND (biconvex)	Size	11mm
Flavor		Imprint Code	SG;175
Contains			

**Packaging**

#	Item Code	Package Description	Marketing Start Date	Marketing End Date
1	NDC:43598-752-60	60 in 1 BOTTLE, PLASTIC; Type 0: Not a Combination Product	05/15/2018	
2	NDC:43598-752-01	100 in 1 BOTTLE, PLASTIC; Type 0: Not a Combination Product	05/15/2018	
3	NDC:43598-752-05	500 in 1 BOTTLE, PLASTIC; Type 0: Not a Combination Product	05/15/2018	

**Marketing Information**

Marketing Category	Application Number or Monograph Citation	Marketing Start Date	Marketing End Date
ANDA	ANDA205794	05/15/2018	

**BUPROPION HYDROCHLORIDE SR**

bupropion hydrochloride tablet, film coated, extended release

**Product Information**

<b>Product Type</b>	HUMAN PRESCRIPTION DRUG	<b>Item Code (Source)</b>	NDC:43598-753
<b>Route of Administration</b>	ORAL		

**Active Ingredient/Active Moiety**

Ingredient Name	Basis of Strength	Strength
<b>BUPROPION HYDROCHLORIDE</b> (UNII: ZG7E5POY8O) (BUPROPION - UNII:01ZG3TPX31)	BUPROPION HYDROCHLORIDE	200 mg

**Inactive Ingredients**

Ingredient Name	Strength
<b>COPOVIDONE</b> (UNII: D9C330MD8B)	
<b>CYSTEINE HYDROCHLORIDE</b> (UNII: ZT934N0X4W)	
<b>HYPROMELLOSES</b> (UNII: 3NXW29V3WO)	
<b>MAGNESIUM STEARATE</b> (UNII: 70097M6I30)	
<b>CELLULOSE, MICROCRYSTALLINE</b> (UNII: OP1R32D61U)	
<b>POLYETHYLENE GLYCOL, UNSPECIFIED</b> (UNII: 3WJQ0SDW1A)	
<b>POLYSORBATE 80</b> (UNII: 6OZP39ZG8H)	
<b>TITANIUM DIOXIDE</b> (UNII: 15FIX9V2JP)	
<b>FD&amp;C RED NO. 40</b> (UNII: WZB9127XOA)	
<b>DEXTRROSE, UNSPECIFIED FORM</b> (UNII: IY9XDZ35W2)	
<b>ALCOHOL</b> (UNII: 3K9958V90M)	
<b>ACACIA</b> (UNII: 5C5403N26O)	
<b>PROPYLENE GLYCOL</b> (UNII: 6DC9Q167V3)	
<b>SILICON DIOXIDE</b> (UNII: ETJ7Z6XBU4)	

**Product Characteristics**

<b>Color</b>	pink	<b>Score</b>	no score
<b>Shape</b>	ROUND (biconvex)	<b>Size</b>	12mm
<b>Flavor</b>		<b>Imprint Code</b>	SG;176

**Contains****Packaging**

#	Item Code	Package Description	Marketing Start Date	Marketing End Date
1	NDC:43598-753-60	60 in 1 BOTTLE, PLASTIC; Type 0: Not a Combination Product	05/15/2018	

**Marketing Information**

Marketing Category	Application Number or Monograph Citation	Marketing Start Date	Marketing End Date
ANDA	ANDA205794	05/15/2018	

**Labeler** - Dr. Reddy's Laboratories Inc. (802315887)**Establishment**

Name	Address	ID/FEI	Business Operations
ScieGen Pharmaceuticals, Inc.		079391286	analysis(43598-751, 43598-752, 43598-753) , manufacture(43598-751, 43598-752, 43598-753)

Revised: 10/2024

Dr. Reddy's Laboratories Inc.