

DIAZEPAM- diazepam solution
American Health Packaging

Diazepam Oral Solution, CIV, 5 mg per 5 mL
I0905C0323 R03/23
Rx Only

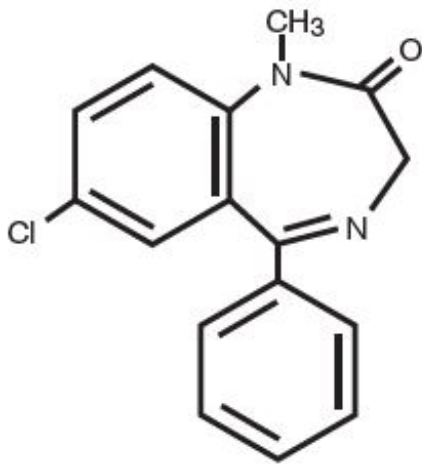
WARNING: RISKS FROM CONCOMITANT USE WITH OPIOIDS; ABUSE, MISUSE, AND ADDICTION; and DEPENDENCE AND WITHDRAWAL REACTIONS

Concomitant use of benzodiazepines and opioids may result in profound sedation, respiratory depression, coma, and death. Reserve concomitant prescribing of these drugs in patients for whom alternative treatment options are inadequate. Limit dosages and durations to the minimum required. Follow patients for signs and symptoms of respiratory depression and sedation (see **WARNINGS AND PRECAUTIONS**).

- The use of benzodiazepines, including diazepam, exposes users to risks of abuse, misuse, and addiction, which can lead to overdose or death. Abuse and misuse of benzodiazepines commonly involve concomitant use of other medications, alcohol, and/or illicit substances, which is associated with an increased frequency of serious adverse outcomes. Before prescribing diazepam and throughout treatment, assess each patient's risk for abuse, misuse, and addiction (see **WARNINGS**).
- The continued use of benzodiazepines, including diazepam, may lead to clinically significant physical dependence. The risks of dependence and withdrawal increase with longer treatment duration and higher daily dose. Abrupt discontinuation or rapid dosage reduction of diazepam after continued use may precipitate acute withdrawal reactions, which can be life-threatening. To reduce the risk of withdrawal reactions, use a gradual taper to discontinue diazepam or reduce the dosage (see **DOSAGE AND ADMINISTRATION** and **WARNINGS**).

DESCRIPTION

Diazepam is a benzodiazepine derivative. Chemically, diazepam is 7-Chloro-1,3-dihydro-1-methyl-5-phenyl-2 H-1,4-benzodiazepin-2-one. It is an off-white to yellow, crystalline powder, insoluble in water and has a molecular weight of 284.74. Its structural formula is as follows:



Each 5 mL of Oral Solution contains:
diazepam USP 5 mg

Inactive Ingredients

The flavored 5 mg/5 mL Oral Solution contains bitterness modifier, citric acid, D&C Yellow No. 10, FD&C Red No. 40, polyethylene glycol, propylene glycol, sodium citrate, sorbitol, water and wintergreen coriander spice blend.

CLINICAL PHARMACOLOGY

Diazepam is a benzodiazepine that exerts anxiolytic, sedative, muscle-relaxant, anticonvulsant and amnesic effects. Most of these effects are thought to result from a facilitation of the action of gamma aminobutyric acid (GABA), an inhibitory neurotransmitter in the central nervous system.

Pharmacokinetics

Absorption: After oral administration > 90% of diazepam is absorbed and the average time to achieve peak plasma concentrations is 1 to 1.5 hours with a range of 0.25 to 2.5 hours. Absorption is delayed and decreased when administered with a moderate fat meal. In the presence of food, mean lag times are approximately 45 minutes as compared with 15 minutes when fasting. There is also an increase in the average time to achieve peak concentrations to about 2.5 hours in the presence of food as compared with 1.25 hours when fasting. This results in an average decrease in C_{max} of 20% in addition to a 27% decrease in AUC (range 15% to 50%) when administered with food.

Distribution: Diazepam and its metabolites are highly bound to plasma proteins (diazepam 98%). Diazepam and its metabolites cross the blood-brain and placental barriers and are also found in breast milk in concentrations approximately one tenth of those in maternal plasma (days 3 to 9 post-partum). In young healthy males, the volume of distribution at steady-state is 0.8 to 1.0 L/kg. The decline in the plasma concentration-time profile after oral administration is biphasic. The initial distribution phase has a half-life of approximately 1 hour, although it may range up to > 3 hours.

Metabolism: Diazepam is N-demethylated by CYP3A4 and 2C19 to the active metabolite N-desmethyldiazepam, and is hydroxylated by CYP3A4 to the active metabolite

temazepam. N-desmethyl diazepam and temazepam are both further metabolized to oxazepam. Temazepam and oxazepam are largely eliminated by glucuronidation.

Elimination: The initial distribution phase is followed by a prolonged terminal elimination phase (half-life up to 48 hours). The terminal elimination half-life of the active metabolite N-desmethyldiazepam is up to 100 hours. Diazepam and its metabolites are excreted mainly in the urine, predominantly as their glucuronide conjugates. The clearance of diazepam is 20 to 30 mL/min in young adults. Diazepam accumulates upon multiple dosing and there is some evidence that the terminal elimination half-life is slightly prolonged.

Pharmacokinetics in Special Populations

Children: In children 3 to 8 years old the mean half-life of diazepam has been reported to be 18 hours.

Newborns: In full term newborns, elimination half-lives around 30 hours have been reported, with a longer average half-life of 54 hours reported in premature infants of 28 to 34 weeks gestational age and 8 to 81 days post-partum. In both premature and full term infants the active metabolite desmethyldiazepam shows evidence of continued accumulation compared to children. Longer half-lives in infants may be due to incomplete maturation of metabolic pathways.

Geriatric: Elimination half-life increases by approximately 1 hour for each year of age beginning with a half-life of 20 hours at 20 years of age. This appears to be due to an increase in volume of distribution with age and a decrease in clearance. Consequently, the elderly may have lower peak concentrations, and on multiple dosing higher trough concentrations. It will also take longer to reach steady-state. Conflicting information has been published on changes of plasma protein binding in the elderly. Reported changes in free drug may be due to significant decreases in plasma proteins due to causes other than simply aging.

Hepatic Insufficiency: In mild and moderate cirrhosis, average half-life is increased. The average increase has been variously reported from 2-fold to 5-fold, with individual half-lives over 500 hours reported. There is also an increase in volume of distribution, and average clearance decreases by almost half. Mean half-life is also prolonged with hepatic fibrosis to 90 hours (range 66 to 104 hours), with chronic active hepatitis to 60 hours (range 26 to 76 hours), and with acute viral hepatitis to 74 hours (range 49 to 129 hours). In chronic active hepatitis, clearance is decreased by almost half.

INDICATIONS

Diazepam is indicated for the management of anxiety disorders or for the short-term relief of the symptoms of anxiety. Anxiety or tension associated with the stress of everyday life usually does not require treatment with an anxiolytic.

In acute alcohol withdrawal, diazepam may be useful in the symptomatic relief of acute agitation, tremor, impending or acute delirium tremens and hallucinosis.

Diazepam is a useful adjunct for the relief of skeletal muscle spasm due to reflex spasm to local pathology (such as inflammation of the muscles or joints, or secondary to trauma); spasticity caused by upper motor neuron disorders (such as cerebral palsy and paraplegia); athetosis; and stiff-man syndrome.

Oral diazepam may be used adjunctively in convulsive disorders, although it has not proved useful as the sole therapy.

The effectiveness of diazepam in long-term use, that is, more than 4 months, has not been assessed by systematic clinical studies. The physician should periodically reassess the usefulness of the drug for the individual patient.

CONTRAINDICATIONS

Diazepam is contraindicated in patients with a known hypersensitivity to diazepam and, because of lack of sufficient clinical experience, in pediatric patients under 6 months of age. Diazepam is also contraindicated in patients with myasthenia gravis, severe respiratory insufficiency, severe hepatic insufficiency, and sleep apnea syndrome. It may be used in patients with open angle glaucoma who are receiving appropriate therapy, but is contraindicated in acute narrow angle glaucoma.

WARNINGS

Risks from Concomitant Use with Opioids

Concomitant use of benzodiazepines, including diazepam, and opioids may result in profound sedation, respiratory depression, coma, and death. Because of these risks, reserve concomitant prescribing of these drugs in patients for whom alternative treatment options are inadequate.

Observational studies have demonstrated that concomitant use of opioid analgesics and benzodiazepines increases the risk of drug-related mortality compared to use of opioids alone. If a decision is made to prescribe diazepam concomitantly with opioids, prescribe the lowest effective dosages and minimum durations of concomitant use, and follow patients closely for signs and symptoms of respiratory depression and sedation. In patients already receiving an opioid analgesic, prescribe a lower initial dose of diazepam than indicated in the absence of an opioid and titrate based on clinical response. If an opioid is initiated in a patient already taking diazepam, prescribe a lower initial dose of the opioid and titrate based upon clinical response.

Advise both patients and caregivers about the risks of respiratory depression and sedation when diazepam is used with opioids. Advise patients not to drive or operate heavy machinery until the effects of concomitant use with the opioid have been determined (see PRECAUTIONS: Drug Interactions).

Abuse, Misuse, and Addiction

The use of benzodiazepines, including diazepam, exposes users to the risks of abuse, misuse, and addiction, which can lead to overdose or death. Abuse and misuse of benzodiazepines often (but not always) involve the use of doses greater than the maximum recommended dosage and commonly involve concomitant use of other medications, alcohol, and/or illicit substances, which is associated with an increased frequency of serious adverse outcomes, including respiratory depression, overdose, or death (see DRUG ABUSE AND DEPENDENCE: Abuse).

Before prescribing diazepam and throughout treatment, assess each patient's risk for

abuse, misuse, and addiction (e.g., using a standardized screening tool). Use of diazepam, particularly in patients at elevated risk, necessitates counseling about the risks and proper use of diazepam along with monitoring for signs and symptoms of abuse, misuse, and addiction. Prescribe the lowest possible dosage for the shortest duration; avoid or minimize concomitant use of CNS depressants and other substances associated with abuse, misuse, and addiction (e.g., opioid analgesics, stimulants); and advise patients on the proper disposal of unused drug. If a substance use disorder is suspected, evaluate the patient and institute (or refer them for) early treatment, as appropriate.

Dependence and Withdrawal Reactions

To reduce the risk of withdrawal reactions, use a gradual taper to discontinue diazepam or reduce the dosage (a patient-specific plan should be used to taper the dose) (see DOSAGE AND ADMINISTRATION: Discontinuation or Dosage Reduction of Diazepam).

Patients at an increased risk of withdrawal adverse reactions after benzodiazepine discontinuation or rapid dosage reduction include those who take higher dosages, and those who have had longer durations of use.

Acute Withdrawal Reactions

The continued use of benzodiazepines, including diazepam, may lead to clinically significant physical dependence. Abrupt discontinuation or rapid dosage reduction of diazepam after continued use, or administration of flumazenil (a benzodiazepine antagonist) may precipitate acute withdrawal reactions, which can be life-threatening (e.g., seizures) (see DRUG ABUSE AND DEPENDENCE: Dependence).

Protracted Withdrawal Syndrome

In some cases, benzodiazepine users have developed a protracted withdrawal syndrome with withdrawal symptoms lasting weeks to more than 12 months (see DRUG ABUSE AND DEPENDENCE: Dependence).

Diazepam is not recommended in the treatment of psychotic patients and should not be employed instead of appropriate treatment.

Since diazepam has a central nervous system depressant effect, patients should be advised against the simultaneous ingestion of alcohol and other CNS-depressant drugs during diazepam therapy.

As with other agents that have anticonvulsant activity, when diazepam is used as an adjunct in treating convulsive disorders, the possibility of an increase in the frequency and/or severity of grand mal seizures may require an increase in the dosage of standard anticonvulsant medication. Abrupt withdrawal of diazepam in such cases may also be associated with a temporary increase in the frequency and/or severity of seizures.

Pregnancy

An increased risk of congenital malformations and other developmental abnormalities associated with the use of benzodiazepine drugs during pregnancy has been suggested. There may also be non-teratogenic risks associated with the use of benzodiazepines during pregnancy. There have been reports of neonatal flaccidity, respiratory and feeding difficulties, and hypothermia in children born to mothers who have been receiving benzodiazepines late in pregnancy. In addition, children born to mothers receiving benzodiazepines on a regular basis late in pregnancy may be at some risk of

experiencing withdrawal symptoms during the postnatal period.

Diazepam has been shown to be teratogenic in mice and hamsters when given orally at daily doses of 100 mg/kg or greater (approximately eight times the maximum recommended human dose [MRHD = 1 mg/kg/day] or greater on a mg/m² basis). Cleft palate and encephalopathy are the most common and consistently reported malformations produced in these species by administration of high, maternally toxic doses of diazepam during organogenesis. Rodent studies have indicated that prenatal exposure to diazepam doses similar to those used clinically can produce long-term changes in cellular immune responses, brain neurochemistry, and behavior.

In general, the use of diazepam in women of childbearing potential, and more specifically during known pregnancy, should be considered only when the clinical situation warrants the risk to the fetus. The possibility that a woman of childbearing potential may be pregnant at the time of institution of therapy should be considered. If this drug is used during pregnancy, or if the patient becomes pregnant while taking this drug, the patient should be apprised of the potential hazard to the fetus. Patients should also be advised that if they become pregnant during therapy or intend to become pregnant, they should communicate with their physicians about the desirability of discontinuing the drug.

Labor and Delivery

Special care must be taken when diazepam is used during labor and delivery, as high single doses may produce irregularities in the fetal heart rate and hypotonia, poor sucking, hypothermia, and moderate respiratory depression in the neonate. With newborn infants it must be remembered that the enzyme system involved in the breakdown of the drug is not fully developed (especially in premature infants).

Nursing Mothers

Diazepam passes into breast milk. Breastfeeding is therefore not recommended in patients receiving diazepam.

PRECAUTIONS

General

If diazepam is to be combined with other psychotropic agents or anticonvulsant drugs, careful consideration should be given to the pharmacology of the agents to be employed - particularly with known compounds which may potentiate the action of diazepam such as phenothiazines, narcotics, barbiturates, MAO inhibitors and other antidepressants (see Drug Interactions).

The usual precautions are indicated for severely depressed patients or those in whom there is any evidence of latent depression or anxiety associated with depression, particularly the recognition that suicidal tendencies may be present and protective measures may be necessary.

Psychiatric and paradoxical reactions are known to occur when using benzodiazepines (see ADVERSE REACTIONS). Should this occur, use of the drug should be discontinued. These reactions are more likely to occur in children and the elderly.

A lower dose is recommended for patients with chronic respiratory insufficiency, due to

the risk of respiratory depression.

Benzodiazepines should be used with extreme caution in patients with a history of alcohol or drug abuse (see DRUG ABUSE AND DEPENDENCE).

In debilitated patients, it is recommended that the dosage be limited to the smallest effective amount to preclude the development of ataxia or oversedation (2 mg to 2.5 mg once or twice daily, initially, to be increased gradually as needed and tolerated).

Some loss of response to the effects of benzodiazepines may develop after repeated use of diazepam for a prolonged time.

Information for Patients

Advise the patient to read the FDA-approved patient labeling (Medication Guide).

Risks from Concomitant Use with Opioids

Advise both patients and caregivers about the risks of potentially fatal respiratory depression and sedation when diazepam is used with opioids and not to use such drugs concomitantly unless supervised by a health care provider. Advise patients not to drive or operate heavy machinery until the effects of concomitant use with the opioid have been determined (see WARNINGS: Risks from Concomitant Use with Opioids and PRECAUTIONS: Drug Interactions).

Abuse, Misuse, and Addiction

Inform patients that the use of diazepam, even at recommended dosages, exposes users to risks of abuse, misuse, and addiction, which can lead to overdose and death, especially when used in combination with other medications (e.g., opioid analgesics), alcohol, and/or illicit substances. Inform patients about the signs and symptoms of benzodiazepine abuse, misuse, and addiction; to seek medical help if they develop these signs and/or symptoms; and on the proper disposal of unused drug (see WARNINGS: Abuse, Misuse, and Addiction and DRUG ABUSE AND DEPENDENCE).

Withdrawal Reactions

Inform patients that the continued use of diazepam may lead to clinically significant physical dependence and that abrupt discontinuation or rapid dosage reduction of diazepam may precipitate acute withdrawal reactions, which can be life-threatening. Inform patients that in some cases, patients have developed a protracted withdrawal syndrome with withdrawal symptoms lasting weeks to more than 12 months. Instruct patients that discontinuation or dosage reduction of diazepam may require a slow taper (see WARNINGS: Dependence and Withdrawal Reactions and DRUG ABUSE AND DEPENDENCE).

Patients should be advised against the simultaneous ingestion of alcohol and other CNS-depressant drugs during diazepam therapy. As is true of most CNS-acting drugs, patients receiving diazepam should be cautioned against engaging in hazardous occupations requiring complete mental alertness, such as operating machinery or driving a motor vehicle.

Drug Interactions

Opioids: The concomitant use of benzodiazepines and opioids increases the risk of respiratory depression because of actions at different receptor sites in the CNS that control respiration. Benzodiazepines interact at GABA_A sites and opioids interact

primarily at mu receptors. When benzodiazepines and opioids are combined, the potential for benzodiazepines to significantly worsen opioid-related respiratory depression exists. Limit dosage and duration of concomitant use of benzodiazepines and opioids, and monitor patients closely for respiratory depression and sedation.

Centrally Acting Agents: If diazepam is to be combined with other centrally acting agents, careful consideration should be given to the pharmacology of the agents employed particularly with compounds that may potentiate or be potentiated by the action of diazepam, such as phenothiazines, antipsychotics, anxiolytics/sedatives, hypnotics, anticonvulsants, narcotic analgesics, anesthetics, sedative antihistamines, narcotics, barbiturates, MAO inhibitors and other antidepressants.

Alcohol: Concomitant use with alcohol is not recommended due to enhancement of the sedative effect.

Antacids: Diazepam peak concentrations are 30% lower when antacids are administered concurrently. However, there is no effect on the extent of absorption. The lower peak concentrations appear due to a slower rate of absorption, with the time required to achieve peak concentrations on average 20 – 25 minutes greater in the presence of antacids. However, this difference was not statistically significant.

Compounds Which Inhibit Certain Hepatic Enzymes: There is a potentially relevant interaction between diazepam and compounds which inhibit certain hepatic enzymes (particularly cytochrome P450 3A and 2C19). Data indicate that these compounds influence the pharmacokinetics of diazepam and may lead to increased and prolonged sedation. At present, this reaction is known to occur with cimetidine, ketoconazole, fluvoxamine, fluoxetine, and omeprazole.

Phenytoin: There have also been reports that the metabolic elimination of phenytoin is decreased by diazepam.

Carcinogenesis, Mutagenesis, Impairment of Fertility

In studies in which mice and rats were administered diazepam in the diet at a dose of 75 mg/kg/day (approximately 6 and 12 times, respectively, the maximum recommended human dose [MRHD = 1 mg/kg/day] on a mg/m² basis) for 80 and 104 weeks, respectively, an increased incidence of liver tumors was observed in males of both species. The data currently available are inadequate to determine the mutagenic potential of diazepam. Reproduction studies in rats showed decreases in the number of pregnancies and in the number of surviving offspring following administration of an oral dose of 100 mg/kg/day (approximately 16 times the MRHD on a mg/m² basis) prior to and during mating and throughout gestation and lactation. No adverse effects on fertility or offspring viability were noted at a dose of 80 mg/kg/day (approximately 13 times the MRHD on a mg/m² basis).

Pregnancy

See WARNINGS: Pregnancy.

Pediatric Use

Safety and effectiveness in pediatric patients below the age of 6 months have not been established.

Geriatric Use

In elderly patients, it is recommended that the dosage be limited to the smallest effective amount to preclude the development of ataxia or oversedation (2 mg to 2.5 mg once or twice daily, initially to be increased gradually as needed and tolerated).

Extensive accumulation of diazepam and its major metabolite, desmethyldiazepam, has been noted following chronic administration of diazepam in healthy elderly male subjects. Metabolites of this drug are known to be substantially excreted by the kidney, and the risk of toxic reactions may be greater in patients with impaired renal function. Because elderly patients are more likely to have decreased renal function, care should be taken in dose selection, and it may be useful to monitor renal function.

Hepatic Insufficiency

Decreases in clearance and protein binding, and increases in volume of distribution and half-life have been reported in patients with cirrhosis. In such patients, a 2- to 5-fold increase in mean half-life has been reported. Delayed elimination has also been reported for the active metabolite desmethyldiazepam. Benzodiazepines are commonly implicated in hepatic encephalopathy. Increases in half-life have also been reported in hepatic fibrosis and in both acute and chronic hepatitis (see CLINICAL PHARMACOLOGY: Pharmacokinetics in Special Populations: Hepatic Insufficiency).

ADVERSE REACTIONS

Side effects most commonly reported were drowsiness, fatigue, muscle weakness and ataxia. The following have also been reported:

Central Nervous System: confusion, depression, dysarthria, headache, slurred speech, tremor, vertigo

Gastrointestinal System: constipation, nausea, gastrointestinal disturbances

Special Senses: blurred vision, diplopia, dizziness

Cardiovascular System: hypotension

Psychiatric and Paradoxical Reactions: stimulation, restlessness, acute hyperexcited states, anxiety, agitation, aggressiveness, irritability, rage, hallucinations, psychoses, delusions, increased muscle spasticity, insomnia, sleep disturbances, and nightmares. Inappropriate behavior and other adverse behavioral effects have been reported when using benzodiazepines. Should these occur, use of the drug should be discontinued. They are more likely to occur in children and in the elderly.

Urogenital System: incontinence, changes in libido, urinary retention

Skin and Appendages: skin reactions

Laboratories: elevated transaminases and alkaline phosphatase

Other: changes in salivation, including dry mouth, hypersalivation

Anterograde amnesia may occur using therapeutic dosages, the risk increasing at higher dosages. Amnestic effects may be associated with inappropriate behavior.

Minor changes in EEG patterns, usually low-voltage fast activity, have been observed in

patients during and after diazepam therapy and are of no known significance.

Because of isolated reports of neutropenia and jaundice, periodic blood counts and liver function tests are advisable during long-term therapy.

Postmarketing Experience

Injury, Poisoning and Procedural Complications: There have been reports of falls and fractures in benzodiazepine users. The risk is increased in those taking concomitant sedatives (including alcohol), and in the elderly.

DRUG ABUSE AND DEPENDENCE

Diazepam is a Schedule IV controlled substance.

Abuse

Diazepam is a benzodiazepine and a CNS depressant with a potential for abuse and addiction. Abuse is the intentional, non-therapeutic use of a drug, even once, for its desirable psychological or physiological effects. Misuse is the intentional use, for therapeutic purposes, of a drug by an individual in a way other than prescribed by a health care provider or for whom it was not prescribed. Drug addiction is a cluster of behavioral, cognitive, and physiological phenomena that may include a strong desire to take the drug, difficulties in controlling drug use (e.g., continuing drug use despite harmful consequences, giving a higher priority to drug use than other activities and obligations), and possible tolerance or physical dependence. Both abuse and misuse may lead to addiction, and some individuals may develop addiction even when taking diazepam as prescribed.

Abuse and misuse of benzodiazepines often (but not always) involve the use of doses greater than the maximum recommended dosage and commonly involve concomitant use of other medications, alcohol, and/or illicit substances, which is associated with an increased frequency of serious adverse outcomes, including respiratory depression, overdose, or death. Benzodiazepines are often sought by individuals who abuse drugs and other substances, and by individuals with addictive disorders (see WARNINGS: Abuse, Misuse, and Addiction).

The following adverse reactions have occurred with benzodiazepine abuse and/or misuse: abdominal pain, amnesia, anorexia, anxiety, aggression, ataxia, blurred vision, confusion, depression, disinhibition, disorientation, dizziness, euphoria, impaired concentration and memory, indigestion, irritability, muscle pain, slurred speech, tremors, and vertigo.

The following severe adverse reactions have occurred with benzodiazepine abuse and/or misuse: delirium, paranoia, suicidal ideation and behavior, seizures, coma, breathing difficulty, and death. Death is more often associated with polysubstance use (especially benzodiazepines with other CNS depressants such as opioids and alcohol).

Dependence

Physical Dependence: Diazepam may produce physical dependence from continued therapy. Physical dependence is a state that develops as a result of physiological adaptation in response to repeated drug use, manifested by withdrawal signs and symptoms after abrupt discontinuation or a significant dose reduction of a drug. Abrupt discontinuation or rapid dosage reduction of benzodiazepines or administration of

flumazenil, a benzodiazepine antagonist, may precipitate acute withdrawal reactions, including seizures, which can be life-threatening. Patients at an increased risk of withdrawal adverse reactions after benzodiazepine discontinuation or rapid dosage reduction include those who take higher dosages (i.e., higher and/or more frequent doses) and those who have had longer durations of use (see WARNINGS: Dependence and Withdrawal Reactions).

To reduce the risk of withdrawal reactions, use a gradual taper to discontinue diazepam or reduce the dosage (see DOSAGE and ADMINISTRATION: Discontinuation or Dosage Reduction of Diazepam and WARNINGS: Dependence and Withdrawal Reactions).

Acute Withdrawal Signs and Symptoms: Acute withdrawal signs and symptoms associated with benzodiazepines have included abnormal involuntary movements, anxiety, blurred vision, depersonalization, depression, derealization, dizziness, fatigue, gastrointestinal adverse reactions (e.g., nausea, vomiting, diarrhea, weight loss, decreased appetite), headache, hyperacusis, hypertension, irritability, insomnia, memory impairment, muscle pain and stiffness, panic attacks, photophobia, restlessness, tachycardia, and tremor. More severe acute withdrawal signs and symptoms, including life-threatening reactions, have included catatonia, convulsions, delirium tremens, depression, hallucinations, mania, psychosis, and suicidality.

Protracted Withdrawal Syndrome: Protracted withdrawal syndrome associated with benzodiazepines is characterized by anxiety, cognitive impairment, depression, insomnia, formication, motor symptoms (e.g., weakness, tremor, muscle twitches), paresthesia, and tinnitus that persists beyond 4 to 6 weeks after initial benzodiazepine withdrawal. Protracted withdrawal symptoms may last weeks to more than 12 months. As a result, there may be difficulty in differentiating withdrawal symptoms from potential re-emergence or continuation of symptoms for which the benzodiazepine was being used.

Tolerance: Tolerance to diazepam may develop from continued therapy. Tolerance is a physiological state characterized by a reduced response to a drug after repeated administration (i.e., a higher dose of a drug is required to produce the same effect that was once obtained at a lower dose). Tolerance to the therapeutic effect of diazepam may develop; however, little tolerance develops to the amnestic reactions and other cognitive impairments caused by benzodiazepines.

OVERDOSAGE

Overdose of benzodiazepines is usually manifested by central nervous system depression ranging from drowsiness to coma. In mild cases, symptoms include drowsiness, confusion and lethargy. In more serious cases, symptoms may include ataxia, diminished reflexes, hypotonia, hypotension, respiratory depression, coma (rarely), and death (very rarely). Overdose of benzodiazepines in combination with other CNS depressants (including alcohol) may be fatal and should be closely monitored.

Management of Overdosage

Following overdose with oral benzodiazepines, general supportive measures should be employed including the monitoring of respiration, pulse and blood pressure. Vomiting should be induced (within 1 hour) if the patient is conscious. Gastric lavage should be undertaken with the airway protected if the patient is unconscious. Intravenous fluids

should be administered. If there is no advantage in emptying the stomach, activated charcoal should be given to reduce absorption. Special attention should be paid to respiratory and cardiac function in intensive care. General supportive measures should be employed, along with intravenous fluids, and an adequate airway maintained. Should hypotension develop, treatment may include intravenous fluid therapy, repositioning, judicious use of vasopressors appropriate to the clinical situation, if indicated, and other appropriate countermeasures. Dialysis is of limited value.

As with the management of intentional overdosage with any drug, it should be considered that multiple agents may have been ingested.

Flumazenil, a specific benzodiazepine receptor antagonist, is indicated for the complete or partial reversal of the sedative effects of benzodiazepines and may be used in situations when an overdose with a benzodiazepine is known or suspected. Prior to the administration of flumazenil, necessary measures should be instituted to secure airway, ventilation, and intravenous access. Flumazenil is intended as an adjunct to, not as a substitute for, proper management of benzodiazepine overdose. Patients treated with flumazenil should be monitored for re-sedation, respiratory depression, and other residual benzodiazepine effects for an appropriate period after treatment. **The prescriber should be aware of a risk of seizure in association with flumazenil treatment, particularly in long-term benzodiazepine users and in cyclic antidepressant overdose.** Caution should be observed in the use of flumazenil in epileptic patients treated with benzodiazepines. The complete flumazenil package insert including CONTRAINDICATIONS, WARNINGS, and PRECAUTIONS should be consulted prior to use.

Withdrawal symptoms of the barbiturate type have occurred after the discontinuation of benzodiazepines (see DRUG ABUSE AND DEPENDENCE).

DOSAGE AND ADMINISTRATION

Dosage should be individualized for maximum beneficial effect. While the usual daily dosages given below will meet the needs of most patients, there will be some who may require higher doses. In such cases dosage should be increased cautiously to avoid adverse effects.

Adults:

	Usual Daily Dosage
<i>Management of Anxiety Disorders and Relief of Symptoms of Anxiety.</i>	Depending upon severity of symptoms - 2 mg to 10 mg, 2 to 4 times daily.
<i>Symptomatic Relief in Acute Alcohol Withdrawal.</i>	10 mg, 3 or 4 times during the first 24 hours, reducing to 5 mg, 3 or 4 times daily as needed.
<i>Adjunctively for Relief of Skeletal Muscle Spasm.</i>	2 mg to 10 mg, 3 or 4 times daily.
<i>Adjunctively in Convulsive Disorders.</i>	2 mg to 10 mg, 2 to 4 times daily.
<i>Geriatric Patients or in the presence of debilitating disease.</i>	2 mg to 2.5 mg, 1 or 2 times daily initially; increase gradually as needed and tolerated.

Pediatric Patients:

Because of varied responses to CNS-acting 1 mg to 2.5 mg, 3 or 4 times daily initially;

drugs, initiate therapy with lowest dose and increase gradually as needed and tolerated. increase as required. Not for use in children under 6 months.

Discontinuation or Dosage Reduction of Diazepam

To reduce the risk of withdrawal reactions, use a gradual taper to discontinue diazepam or reduce the dosage. If a patient develops withdrawal reactions, consider pausing the taper or increasing the dosage to the previous tapered dosage level. Subsequently decrease the dosage more slowly (see WARNINGS: Dependence and Withdrawal Reactions and DRUG ABUSE AND DEPENDENCE: Dependence).

HOW SUPPLIED

Diazepam Oral Solution

The 5 mg per 5 mL oral solution is supplied as a (wintergreen-spice flavored) clear, orange-colored solution.

5 mL unit dose cups: 30 cups (3 x 10) NDC 6068775586

STORAGE

Store at 20° to 25°C (68° to 77°F). [See USP Controlled Room Temperature.]

Dispense in a tight, light-resistant container as defined in the USP/NF.

DO NOT USE IF SEAL IS BROKEN.

Distributed by:

American Health Packaging

Columbus, OH 43217

R03/23

MEDICATION GUIDE

Diazepam Oral Solution, CIV, (5 mg per 5 mL) (dye az' e pam)

What is the most important information I should know about Diazepam Oral Solution?

- **Diazepam Oral Solution is a benzodiazepine medicine. Taking benzodiazepines with opioid medicines, alcohol, or other central nervous system depressants (CNS) (including street drugs) can cause severe drowsiness, breathing problems (respiratory depression), coma and death.** Get emergency help right away if any of the following happens:
 - shallow or slowed breathing
 - breathing stops (which may lead to the heart stopping)
 - excessive sleepiness (sedation)
- Do not drive or operate heavy machinery until you know how taking Diazepam Oral Solution with opioids affects you.
- **Risk of abuse, misuse, and addiction.** There is a risk of abuse, misuse, and addiction with benzodiazepines, including Diazepam Oral Solution which can lead to overdose and serious side effects including coma and death.

- **Serious side effects including coma and death have happened in people who have abused or misused benzodiazepines, including Diazepam Oral Solution.** These serious side effects may also include delirium, paranoia, suicidal thoughts or actions, seizures, and difficulty breathing. **Call your healthcare provider or go to the nearest hospital emergency room right away if you get any of these serious side effects.**
- **You can develop an addiction even if you take Diazepam Oral Solution exactly as prescribed by your healthcare provider.**
- **Take Diazepam Oral Solution exactly as your healthcare provider prescribed.**
 - Do not share your Diazepam Oral Solution with other people.
 - Keep Diazepam Oral Solution in a safe place and away from children.
- **Physical dependence and withdrawal reactions.** Diazepam Oral Solution can cause physical dependence and withdrawal reactions, especially if you continue to take Diazepam Oral Solution for several days to several weeks.
 - **Do not suddenly stop taking Diazepam Oral Solution.** Stopping Diazepam Oral Solution suddenly can cause serious and life-threatening side effects, including unusual movements, responses, or expressions, seizures, sudden and severe mental or nervous system changes, depression, seeing or hearing things that others do not see or hear, an extreme increase in activity or talking, losing touch with reality, and suicidal thoughts or actions. Call your healthcare provider or go to the nearest hospital emergency room right away if you get any of these symptoms.
 - **Some people who suddenly stop benzodiazepines have symptoms that can last for several weeks to more than 12 months,** including anxiety, trouble remembering, learning, or concentrating, depression, problems sleeping, feeling like insects are crawling under your skin, weakness, shaking.
 - Physical dependence is not the same as drug addiction. Your healthcare provider can tell you more about the differences between physical dependence and drug addiction.
 - Do not take more Diazepam Oral Solution than prescribed.

What is Diazepam Oral Solution?

- Diazepam Oral Solution is a prescription medicine used:
 - to treat anxiety disorders
 - for the short-term relief of the symptoms of anxiety
 - to relieve the symptoms of alcohol withdrawal including agitation, shakiness (tremor), sudden and severe mental or nervous system changes (delirium tremens) and seeing or hearing things that others do not see or hear (hallucinations)
 - along with other medicines for the relief of muscle spasms
 - along with other medicines to treat seizure disorders
- **Diazepam Oral Solution is a federal controlled substance (C-IV) because it can be abused or lead to dependence.** Keep Diazepam Oral Solution in a safe place to prevent misuse and abuse. Selling or giving away Diazepam Oral Solution may harm others, and is against the law. Tell your healthcare provider if you have abused or been dependent on alcohol, prescription medicines or street drugs.
- It is not known if Diazepam Oral Solution is safe and effective in children under 6 months of age.

- It is not known if Diazepam Oral Solution is safe and effective for use longer than 4 months.

Do not take Diazepam Oral Solution if you:

- are allergic to diazepam or any of the ingredients in Diazepam Oral Solution. See the end of this Medication Guide for a complete list of ingredients in Diazepam Oral Solution.
- have a disease that can cause muscle weakness called myasthenia gravis
- have severe breathing problems (severe respiratory insufficiency)
- have severe liver problems
- have a sleep problem called sleep apnea syndrome

Before you take Diazepam Oral Solution, tell your healthcare provider about all of your medical conditions, including if you:

- have or have had depression, mood problems, or suicidal thoughts or behavior
- have lung disease or breathing problems
- have liver or kidney problems
- are pregnant or plan to become pregnant. Diazepam Oral Solution may harm your unborn baby. You and your healthcare provider should decide if you should take Diazepam Oral Solution while you are pregnant.
- are breastfeeding or plan to breastfeed. Diazepam passes into your breast milk and may harm your baby. Talk to your healthcare provider about the best way to feed your baby if you take Diazepam Oral Solution. Do not breastfeed while taking Diazepam Oral Solution.

Tell your healthcare provider about all the medicines you take, including prescription and over-the-counter medicines, vitamins, and herbal supplements. Taking Diazepam Oral Solution with certain other medicines can cause side effects or affect how well Diazepam Oral Solution or the other medicines work. Do not start or stop other medicines without talking to your healthcare provider.

How should I take Diazepam Oral Solution?

- Take Diazepam Oral Solution exactly as your healthcare provider tells you to take it. Your healthcare provider will tell you how much Diazepam Oral Solution to take and when to take it.
- Talk to your healthcare provider about slowly stopping Diazepam Oral Solution to avoid withdrawal symptoms.
- If you take too much Diazepam Oral Solution, call your healthcare provider or go to the nearest hospital emergency room right away.

What are the possible side effects of Diazepam Oral Solution? Diazepam Oral Solution may cause serious side effects, including:

- **See “What is the most important information I should know about Diazepam Oral Solution?”**
- **Seizures.** Taking Diazepam Oral Solution with other medicines used to treat epilepsy can cause an increase in the number or severity of grand mal seizures.
- **Withdrawal symptoms.** You may have withdrawal symptoms if you stop taking Diazepam Oral Solution suddenly. Withdrawal symptoms can be serious and include seizures. Mild withdrawal symptoms include a depressed mood and trouble sleeping. Talk to your healthcare provider about slowly stopping Diazepam Oral Solution to

avoid withdrawal symptoms.

- **Diazepam Oral Solution can make you sleepy or dizzy, and can slow your thinking and motor skills.**
 - Do not drive, operate heavy machinery, or do other dangerous activities until you know how Diazepam Oral Solution affects you.
 - Do not drink alcohol or take other drugs that may make you sleepy or dizzy while taking Diazepam Oral Solution without first talking to your healthcare provider. When taken with alcohol or drugs that cause sleepiness or dizziness, Diazepam Oral Solution may make your sleepiness or dizziness much worse.
- **Like other antiepileptic drugs, Diazepam Oral Solution may cause suicidal thoughts or actions in a very small number of people, about 1 in 500.**

Call your healthcare provider right away if you have any of these symptoms, especially if they are new, worse, or worry you:

- thoughts about suicide or dying
- new or worse anxiety
- trouble sleeping (insomnia)
- acting on dangerous impulses
- attempts to commit suicide
- feeling agitated or restless
- new or worse irritability
- an extreme increase in activity and talking (mania)
- new or worse depression
- panic attacks
- acting aggressive, being angry, or violent
- other unusual changes in behavior or mood

How can I watch for early symptoms of suicidal thoughts and actions?

- Pay attention to any changes, especially sudden changes, in mood, behaviors, thoughts, or feelings.
- Keep all follow-up visits with your healthcare provider as scheduled. Call your healthcare provider between visits as needed, especially if you are worried about symptoms. Suicidal thoughts or actions can be caused by things other than medicines. If you have suicidal thoughts or actions, your healthcare provider may check for other causes.

The most common side effects of Diazepam Oral Solution include:

- drowsiness
- fatigue
- muscle weakness
- loss of control of body movements (ataxia)

These are not all the possible side effects of Diazepam Oral Solution. Call your doctor for medical advice about side effects. You may report side effects to FDA at 1-800-FDA-1088. You may also report side effects to Pharmaceutical Associates, Inc. at 1-800-845-8210.

How should I store Diazepam Oral Solution?

- Store Diazepam Oral Solution in a tightly closed, light-resistant container at room temperature between 68°F to 77°F (20°C to 25°C). **Protect from light.**

Keep Diazepam Oral Solution and all medicines out of the reach of children.

General information about the safe and effective use of Diazepam Oral Solution. Medicines are sometimes prescribed for purposes other than those listed in a Medication Guide. Do not use Diazepam Oral Solution for a condition for which it was not prescribed. Do not give Diazepam Oral Solution to other people, even if they have the same symptoms that you have. It may harm them. You can ask your pharmacist or healthcare provider for information about Diazepam Oral Solution that is written for health professionals.

What are the ingredients in Diazepam Oral Solution?

Active ingredient: diazepam

Inactive ingredients: The flavored 5 mg/5 mL oral solution contains bitterness modifier, citric acid, D&C Yellow No. 10, FD&C Red No. 40, polyethylene glycol, propylene glycol, sodium citrate, sorbitol, water and wintergreen coriander spice blend.

This Medication Guide has been approved by the U.S. Food and Drug Administration.

Distributed by:

American Health Packaging

Columbus, OH 43217

R03/23

Package/Label Display Panel - Cup - 5 mg/ 5 mL



Rx Only

NDC 60687- 755-40

Diazepam
Oral Solution **CIV**

5 mg/5 mL

**Sugar Free
Delivers 5 mL**

Dispense with Medication Guide.

See package insert for full
prescribing information and storage.

For Institutional Use Only.

American Health Packaging
Columbus, OH 43217

A0905C050325

DIAZEPAM

diazepam solution

Product Information

Product Type	HUMAN PRESCRIPTION DRUG	Item Code (Source)	NDC:60687- 755(NDC:0054-3188)
Route of Administration	ORAL	DEA Schedule	CIV

Active Ingredient/Active Moiety

Ingredient Name	Basis of Strength	Strength
DIAZEPAM (UNII: Q3JTX2Q7TU) (DIAZEPAM - UNII:Q3JTX2Q7TU)	DIAZEPAM	5 mg in 5 mL

Inactive Ingredients

Ingredient Name	Strength
D&C YELLOW NO. 10 (UNII: 35SW5USQ3G)	
FD&C RED NO. 40 (UNII: WZB9127XOA)	
POLYETHYLENE GLYCOL 1000 (UNII: U076Q6Q621)	
PROPYLENE GLYCOL (UNII: 6DC9Q167V3)	
SODIUM CITRATE, UNSPECIFIED FORM (UNII: 1Q73Q2JULR)	
SORBITOL (UNII: 506T60A25R)	
WATER (UNII: 059QF0KO0R)	
ANHYDROUS CITRIC ACID (UNII: XF417D3PSL)	

Packaging

#	Item Code	Package Description	Marketing Start Date	Marketing End Date
1	NDC:60687- 755-86	3 in 1 CASE	07/31/2023	
1	NDC:60687- 755-46	10 in 1 TRAY		
1	NDC:60687- 755-40	5 mL in 1 CUP, UNIT-DOSE; Type 0: Not a Combination Product		

Marketing Information

Marketing Category	Application Number or Monograph Citation	Marketing Start Date	Marketing End Date
ANDA	ANDA070928	07/31/2023	

Labeler - American Health Packaging (929561009)

Revised: 8/2023

American Health Packaging