

GUNA DEEP CLEANSE- apis mellifera - berberis vulgaris root bark - chelidonium majus - chondrodendron tomentosum root - equisetum hyemale whole - fucus vesiculosus - galium aparine whole - hamamelis virginiana root bark - lycopodium clavatum spore - myosotis arvensis - podophyllum peltatum root - rancid beef - sodium sulfate - solidago virgaurea flowering top - strychnos nux vomica seed - thuja occidentalis leafy twig - solution/ drops

Guna spa

Disclaimer: This homeopathic product has not been evaluated by the Food and Drug Administration for safety or efficacy. FDA is not aware of scientific evidence to support homeopathy as effective.

GUNA DEEP CLEANSE

Helps drain toxins and liquids,
supports kidney and liver cleansing function

Purpose

**Helps drain toxins and liquids,
supports kidney and liver cleansing function**

Active Ingredient(s)

Apis mellifica 12X Relieves swelling

Berberis vulgaris 3X Supports liver and kidney drainage

Chelidonium majus 4X Supports liver and gallbladder function

Equisetum hyemale 3X Supports kidney and bladder drainage

Fucus vesiculosus 6X Supports detoxification

Galium aparine 4X Increases urination

Hamamelis 2X Improves blood circulation

Lycopodium clavatum 4X Supports liver function and drainage

Myosotis arvensis 4X Supports detoxification

Natrum sulphuricum 12X Supports detoxification

Nux vomica 4X Relieves constipation

Pareira brava 6X Relieves urinary discomfort

Podophyllum peltatum 6X Supports bowel regularity

Pyrogenium 12X Supports detoxification

Solidago 4X Supports liver and kidney function

Thuja occidentalis 6X Supports detoxification

Take 15 minutes before meals

Warnings

Warnings:

- Stop use and ask doctor if symptoms persist more than 5 days.

- If pregnant or breast-feeding ask a health professional before use.
- Keep out of reach of children.
- In case of accidental overdose, seek professional assistance or contact a Poison Control Center immediately
- Contains ethyl alcohol 30%

Do not use

if tamper-evident seal is broken

Stop use and ask doctor if symptoms persist more than 5 days.

Keep out of reach of children.

Directions

Take 15 minutes before meals.

Adults and children twelve years and older: 20 drops in a little water, 2 times per day

Children between 12 years and 6 years of age: 10 drops in a little water, 2 times per day

Children under 6 years: consult a physician

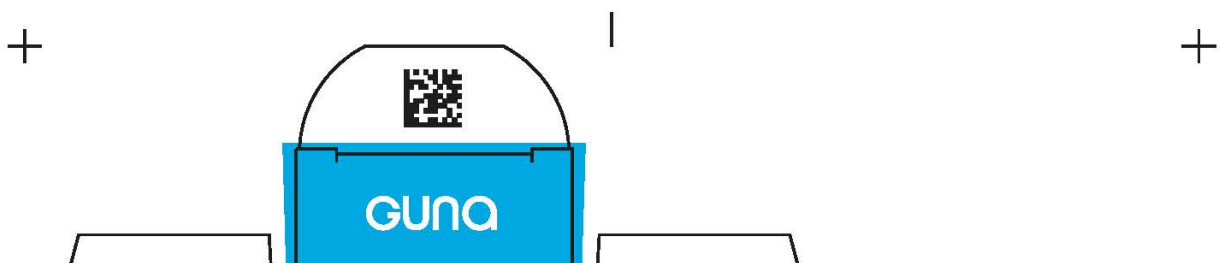
Other information

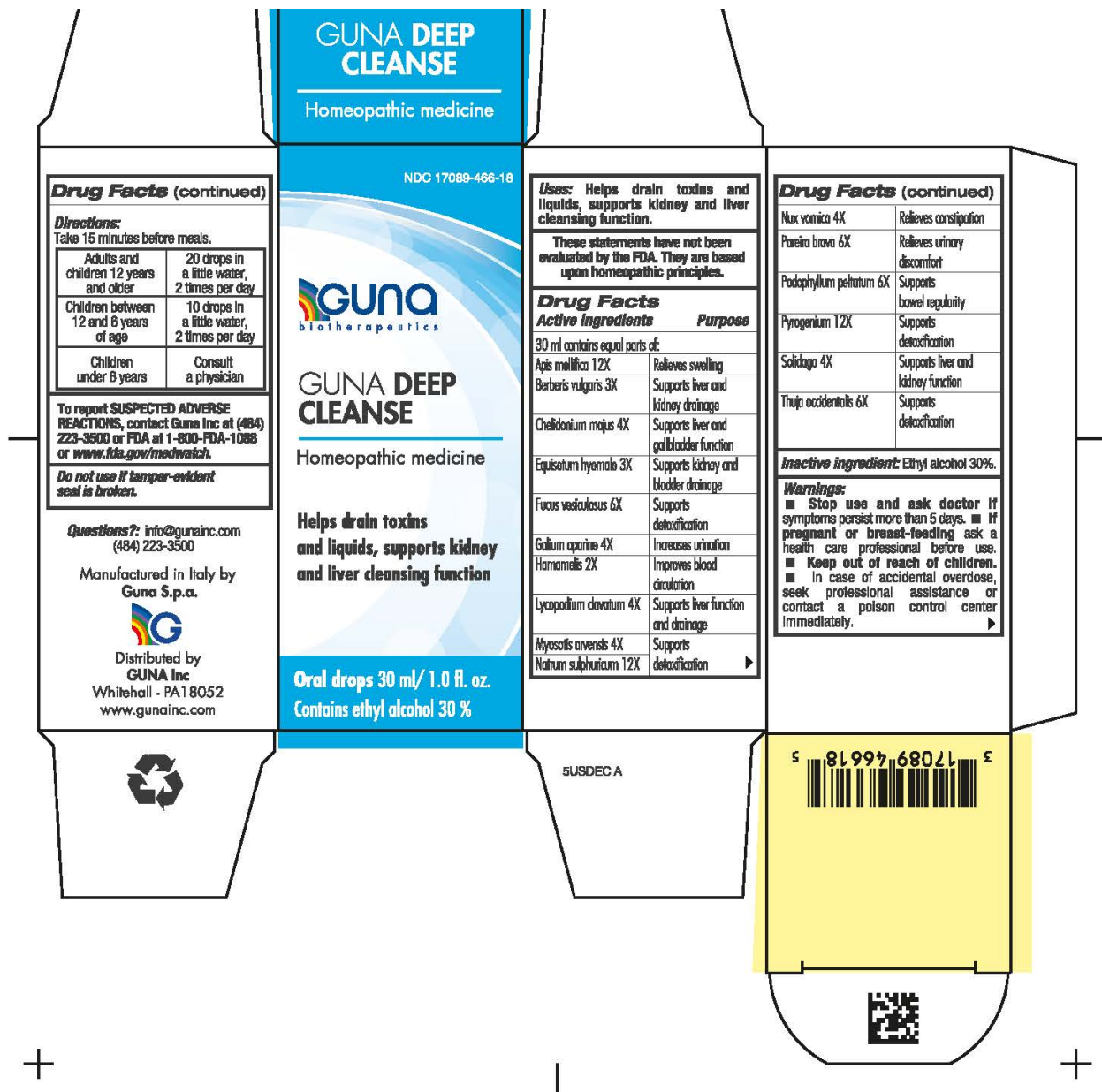
- No special storage conditions

Inactive ingredients

Inactive Ingredient: Ethyl alcohol 30%

To Report SUSPECTED ADVERSE REACTIONS, contact Guna Inc at (484) 223-3500 or FDA at 1-800-FDA-1088 or www.fda.gov/medwatch

Package Label - Principal Display Panel



GUNA DEEP CLEANSE

apis mellifera - berberis vulgaris root bark - chelidonium majus - chondrodendron tomentosum root - equisetum hyemale whole - fucus vesiculosus - galium aparine whole - hamamelis virginiana root bark - lycopodium clavatum spore - myosotis arvensis - podophyllum peltatum root - rancid beef - sodium sulfate - solidago virgaurea flowering top - strychnos nux vomica seed - thuja occidentalis leafy twig - solution/ drops

Product Information

Product Type	HUMAN OTC DRUG	Item Code (Source)	NDC:17089-466
Route of Administration	ORAL		

Active Ingredient/Active Moiety

Ingredient Name	Basis of Strength	Strength
CHELIDONIUM MAJUS ROOT (UNII: FLT36UCF0N) (CHELIDONIUM MAJUS ROOT - UNII:FLT36UCF0N)	CHELIDONIUM MAJUS ROOT	4 [hp_X] in 30 mL

LYCOPODIUM CLAVATUM SPORE (UNII: C88X29Y479) (LYCOPODIUM CLAVATUM SPORE - UNII:C88X29Y479)	LYCOPODIUM CLAVATUM SPORE	4 [hp_X] in 30 mL
SODIUM SULFATE (UNII: 0YPR65R21J) (SODIUM CATION - UNII:LYR4M0NH37)	SODIUM SULFATE	12 [hp_X] in 30 mL
SOLIDAGO VIRGAUREA FLOWERING TOP (UNII: 5405K23S50) (SOLIDAGO VIRGAUREA FLOWERING TOP - UNII:5405K23S50)	SOLIDAGO VIRGAUREA FLOWERING TOP	4 [hp_X] in 30 mL
RANCID BEEF (UNII: 29SUH5R3HU) (RANCID BEEF - UNII:29SUH5R3HU)	RANCID BEEF	12 [hp_X] in 30 mL
FUCUS VESICULOSUS (UNII: 535G2ABX9M) (FUCUS VESICULOSUS - UNII:535G2ABX9M)	FUCUS VESICULOSUS	6 [hp_X] in 30 mL
GALIUM APARINE WHOLE (UNII: Z4B6561488) (GALIUM APARINE WHOLE - UNII:Z4B6561488)	GALIUM APARINE WHOLE	4 [hp_X] in 30 mL
THUJA OCCIDENTALIS LEAFY TWIG (UNII: 1NT28V9397) (THUJA OCCIDENTALIS LEAFY TWIG - UNII:1NT28V9397)	THUJA OCCIDENTALIS LEAFY TWIG	6 [hp_X] in 30 mL
MYOSOTIS ARVENSIS (UNII: C73BK97H5J) (MYOSOTIS ARVENSIS - UNII:C73BK97H5J)	MYOSOTIS ARVENSIS	4 [hp_X] in 30 mL
STRYCHNOS NUX-VOMICA SEED (UNII: 269XH13919) (STRYCHNOS NUX-VOMICA SEED - UNII:269XH13919)	STRYCHNOS NUX-VOMICA SEED	4 [hp_X] in 30 mL
PODOPHYLLUM PELTATUM ROOT (UNII: 2S713A4VP3) (PODOPHYLLUM PELTATUM ROOT - UNII:2S713A4VP3)	PODOPHYLLUM PELTATUM ROOT	6 [hp_X] in 30 mL
CHONDRODENDRON TOMENTOSUM ROOT (UNII: 395A3P448Z) (CHONDRODENDRON TOMENTOSUM ROOT - UNII:395A3P448Z)	CHONDRODENDRON TOMENTOSUM ROOT	6 [hp_X] in 30 mL
APIS MELLIFERA (UNII: 7S82P3R43Z) (APIS MELLIFERA - UNII:7S82P3R43Z)	APIS MELLIFERA	12 [hp_X] in 30 mL
BERBERIS VULGARIS ROOT BARK (UNII: 1TH8Q20J0U) (BERBERIS VULGARIS ROOT BARK - UNII:1TH8Q20J0U)	BERBERIS VULGARIS ROOT BARK	3 [hp_X] in 30 mL
EQUISETUM HYEMALE WHOLE (UNII: 59677RXH25) (EQUISETUM HYEMALE WHOLE - UNII:59677RXH25)	EQUISETUM HYEMALE WHOLE	3 [hp_X] in 30 mL
HAMAMELIS VIRGINIANA ROOT BARK/STEM BARK (UNII: T7S323PKJS) (HAMAMELIS VIRGINIANA ROOT BARK/STEM BARK - UNII:T7S323PKJS)	HAMAMELIS VIRGINIANA ROOT BARK/STEM BARK	2 [hp_X] in 30 mL

Inactive Ingredients

Ingredient Name	Strength
ALCOHOL (UNII: 3K9958V90M)	9 mL in 30 mL

Packaging

#	Item Code	Package Description	Marketing Start Date	Marketing End Date
1	NDC:17089-466-18	1 in 1 BOX	09/24/2020	
1		30 mL in 1 BOTTLE, DROPPER; Type 0: Not a Combination Product		

Marketing Information

Marketing Category	Application Number or Monograph Citation	Marketing Start Date	Marketing End Date
unapproved homeopathic		09/24/2020	

Labeler - Guna spa (430538264)

Registrant - GUNA Spa (338587646)

Establishment

Name	Address	ID/FEI	Business Operations
Guna spa		338587646	manufacture(17089-466)

Revised: 9/2020

Guna spa