

**GUNA BOWEL PLUS- activated charcoal - aloe - aluminum oxide - bryonia alba root - chelidonium majus - collinsonia - frangula alnus bark - lycopodium clavatum spore - potassium carbonate- rhubarb - strychnos nux vomica seed - silybum marianum seed - skatole - sodium carbonate - sus scrofa pancreas - taraxacum officinale - thiamine - solution/ drops**  
**Guna spa**

*Disclaimer: This homeopathic product has not been evaluated by the Food and Drug Administration for safety or efficacy. FDA is not aware of scientific evidence to support homeopathy as effective.*

-----  
**GUNA BOWEL PLUS**

Take 15 minutes before meals

Inactive ingredient: Ethyl alcohol 30%

**QUESTIONS**

Questions?: info@gunainc.com, tel. (484) 223-3500

**DIRECTIONS**

Adults and children 12 years and older 20 drops in a little water, 2 times per day

Children between 12 years and 6 years of age 10 drops in a little water, 2 times per day

Children under 6 years: consulta a physician

**WARNINGS**

Keep out of reach of children

**PREGNANCY**

If pregnant or breast-feeding ask a health care professional before use

**WARNINGS**

- **Stop use and ask doctor** if symptoms persist more than 5 days.
- **If pregnant or breast-feeding** ask a health care professional before use.
- **Keep out of reach of children.** In case of accidental overdose, seek professional assistance or contact a Poison Control Center immediately
- Contains Aloe: do not use orally for more than 30 days.
- Contains ethyl alcohol 30%

**USES**

Temporary relief of gastrointestinal disorders, such as:

- **constipation**
- **nausea**
- **abdominal gas**
- **impaired digestion**

## **ACTIVE INGREDIENTS/PURPOSE**

Aloe 4X Relieves constipation

Alumina 6X, 8X Relieves constipation

Bryonia 6X, 8X Relieves nausea, appetite disorders

Carbo vegetabilis 6X Helps digestion

Carduus marianus 2X Supports liver function

Chelidonium majus 2X Supports liver and gallbladder function

Collinsonia canadensis 2X Relieves hemorrhoids and constipation

Kali carbonicum 6X, 8X, 12X Relieves abdominal gas and nausea

Lycopodium clavatum 2X Supports liver function and drainage

Natrum carbonicum 6X, 8X, 12X Helps digestion

Nux vomica 6X, 8X Relieves abdominal gas and helps digestion

Pancreas suis 6X Relieves nausea, appetite disorders

Rhamnus frangula 2X Relieves nausea

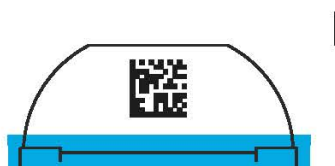
Rheum 2X Relieves constipation

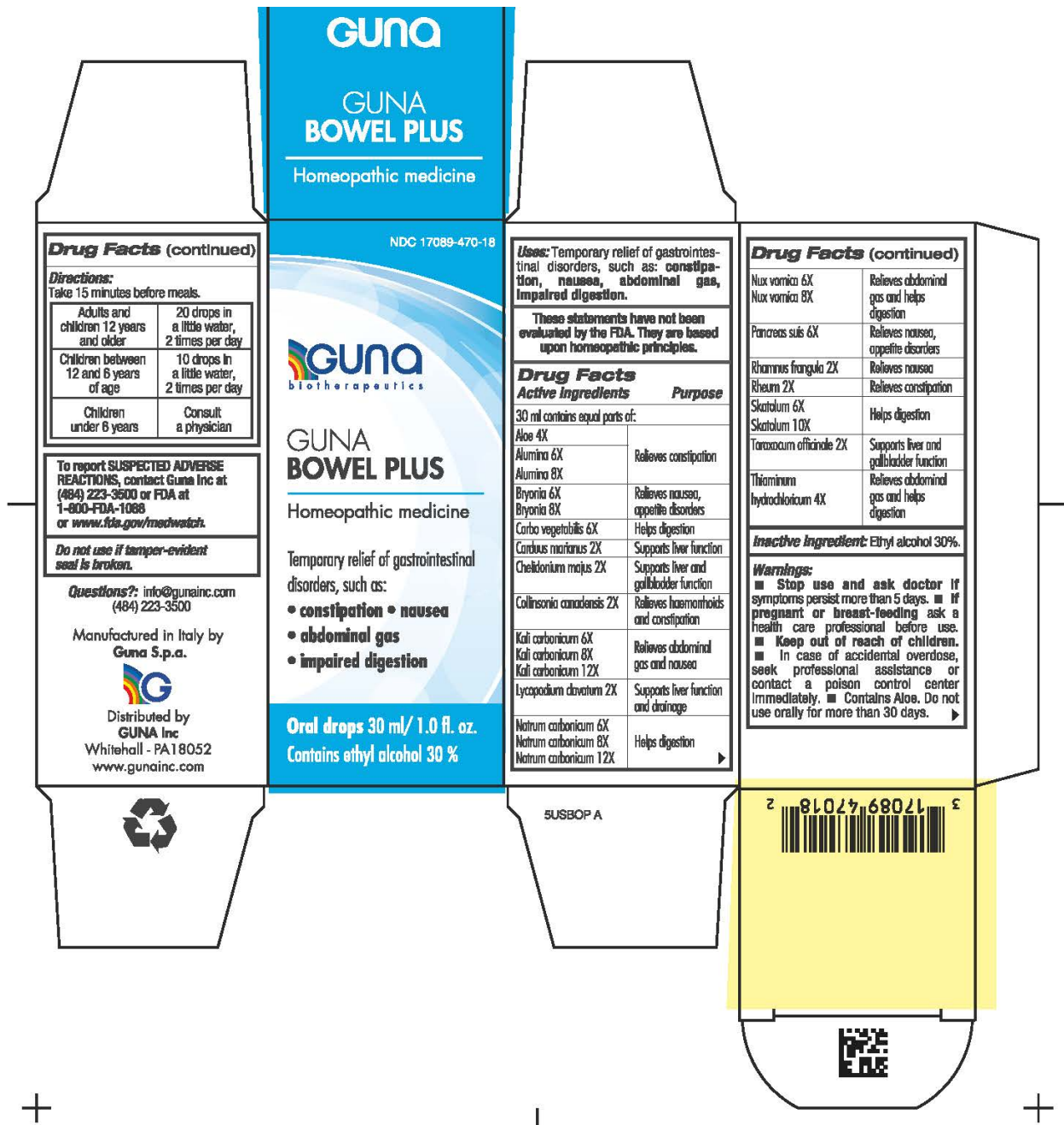
Skatolum 6X, 10X Helps digestion

Taraxacum officinale 2X Supports liver and gallbladder function

Thiaminum hydroc. 4X Relieves abdominal gas and helps digestion

## **PRINCIPAL DISPLAY PANEL**





## GUNA BOWEL PLUS

activated charcoal - aloe - aluminum oxide - bryonia alba root - chelidonium majus - collinsonia - frangula alnus bark - lycopodium clavatum spore - potassium carbonate- rhubarb - strychnos nux vomica seed - silybum marianum seed - skatole - sodium carbonate - sus scrofa pancreas - taraxacum officinale - thiamine - solution/drops

### Product Information

Product Type	HUMAN OTC DRUG	Item Code (Source)	NDC:17089-470
Route of Administration	ORAL		

### Active Ingredient/Active Moiety

Ingredient Name	Basis of Strength	Strength
<b>ALOE</b> (UNII: V5VD430YW9) (ALOE - UNII:V5VD430YW9)	ALOE	4 [hp_X] in 30 mL
<b>ALUMINUM OXIDE</b> (UNII: LM26O6933) (ALUMINUM OXIDE - UNII:LM26O6933)	ALUMINUM OXIDE	6 [hp_X] in 30 mL
<b>BRYONIA ALBA ROOT</b> (UNII: T7J046YI2B) (BRYONIA ALBA ROOT - UNII:T7J046YI2B)	BRYONIA ALBA ROOT	6 [hp_X] in 30 mL
<b>SILYBUM MARIANUM SEED</b> (UNII: U946SH95EE) (SILYBUM MARIANUM SEED - UNII:U946SH95EE)	SILYBUM MARIANUM SEED	2 [hp_X] in 30 mL
<b>CHELIDONIUM MAJUS</b> (UNII: 7E889U5RNN) (CHELIDONIUM MAJUS - UNII:7E889U5RNN)	CHELIDONIUM MAJUS	2 [hp_X] in 30 mL
<b>ACTIVATED CHARCOAL</b> (UNII: 2P3VWU3H10) (ACTIVATED CHARCOAL - UNII:2P3VWU3H10)	ACTIVATED CHARCOAL	6 [hp_X] in 30 mL
<b>COLLINSONIA</b> (UNII: J9BTD5377V) (COLLINSONIA - UNII:J9BTD5377V)	COLLINSONIA	2 [hp_X] in 30 mL
<b>SUS SCROFA PANCREAS</b> (UNII: 9Y3J3362RY) (SUS SCROFA PANCREAS - UNII:9Y3J3362RY)	SUS SCROFA PANCREAS	6 [hp_X] in 30 mL
<b>POTASSIUM CARBONATE</b> (UNII: BQN1B9B9HA) (CARBONATE ION - UNII:7UJQ5OPE7D)	POTASSIUM CARBONATE	6 [hp_X] in 30 mL
<b>SODIUM CARBONATE</b> (UNII: 45P3261C7T) (CARBONATE ION - UNII:7UJQ5OPE7D)	SODIUM CARBONATE	6 [hp_X] in 30 mL
<b>LYCOPODIUM CLAVATUM SPORE</b> (UNII: C88X29Y479) (LYCOPODIUM CLAVATUM SPORE - UNII:C88X29Y479)	LYCOPODIUM CLAVATUM SPORE	2 [hp_X] in 30 mL
<b>STRYCHNOS NUX-VOMICA SEED</b> (UNII: 269XH13919) (STRYCHNOS NUX-VOMICA SEED - UNII:269XH13919)	STRYCHNOS NUX-VOMICA SEED	6 [hp_X] in 30 mL
<b>FRANGULA ALNUS BARK</b> (UNII: S2D77IH61R) (FRANGULA ALNUS BARK - UNII:S2D77IH61R)	FRANGULA ALNUS BARK	2 [hp_X] in 30 mL
<b>RHUBARB</b> (UNII: G280W4MW6E) (RHUBARB - UNII:G280W4MW6E)	RHUBARB	2 [hp_X] in 30 mL
<b>SKATOLE</b> (UNII: 9W945B5H7R) (SKATOLE - UNII:9W945B5H7R)	SKATOLE	6 [hp_X] in 30 mL
<b>TARAXACUM OFFICINALE</b> (UNII: 39981FM375) (TARAXACUM OFFICINALE - UNII:39981FM375)	TARAXACUM OFFICINALE	2 [hp_X] in 30 mL
<b>THIAMINE</b> (UNII: X66NSO3N35) (THIAMINE ION - UNII:4ABT0J945J)	THIAMINE	4 [hp_X] in 30 mL

### Inactive Ingredients

Ingredient Name	Strength
<b>ALCOHOL</b> (UNII: 3K9958V90M)	9 mL in 30 mL

### Packaging

#	Item Code	Package Description	Marketing Start Date	Marketing End Date
1	NDC:17089-470-18	1 in 1 BOX	01/17/2021	
1		30 mL in 1 BOTTLE, DROPPER; Type 0: Not a Combination Product		

### Marketing Information

Marketing Category	Application Number or Monograph Citation	Marketing Start Date	Marketing End Date
unapproved homeopathic		01/17/2021	

---

**Labeler** - Guna spa (430538264)

**Establishment**

Name	Address	ID/FEI	Business Operations
Guna spa		338587646	manufacture(17089-470)

Revised: 1/2021

Guna spa