

BRINSUPRI- brensocatib tablet

Insmmed Incorporated

HIGHLIGHTS OF PRESCRIBING INFORMATION

These highlights do not include all the information needed to use BRINSUPRI safely and effectively. See full prescribing information for BRINSUPRI.

BRINSUPRI™ (brensocatib) tablets, for oral use

Initial U.S. Approval: 2025

INDICATIONS AND USAGE

BRINSUPRI is a dipeptidyl peptidase 1 (DPP1) inhibitor indicated for the treatment of non-cystic fibrosis bronchiectasis in adult and pediatric patients 12 years of age and older. (1)

DOSAGE AND ADMINISTRATION

Recommended dosage: 10 mg or 25 mg orally once daily with or without food. (2.1)

DOSAGE FORMS AND STRENGTHS

Tablets: 10 mg and 25 mg (3)

CONTRAINDICATIONS

None. (4)

WARNINGS AND PRECAUTIONS

Dermatologic Adverse Reactions: Monitor for new rash or skin conditions and refer to dermatology for evaluation. (5.1)

Gingival and Periodontal Adverse Reactions: Gingival and periodontal adverse reactions can occur with BRINSUPRI use. Refer to the dental care services for regular dental checkups and advise patients to perform routine dental hygiene. (5.2)

Live Attenuated Vaccines: It is unknown whether administration of live attenuated vaccines during BRINSUPRI treatment will affect the safety or effectiveness of the vaccines. Avoid use of live attenuated vaccines. (5.3)

ADVERSE REACTIONS

Most common adverse reactions (incidence $\geq 2\%$): upper respiratory tract infection, headache, rash, dry skin, hyperkeratosis, hypertension. (6.1)

To report SUSPECTED ADVERSE REACTIONS, contact Insmmed Incorporated at 1-844-4-INSMED or FDA at 1-800-FDA-1088 or <https://www.fda.gov/medwatch>.

See 17 for PATIENT COUNSELING INFORMATION and FDA-approved patient labeling.

Revised: 8/2025

FULL PRESCRIBING INFORMATION: CONTENTS*

1 INDICATIONS AND USAGE

2 DOSAGE AND ADMINISTRATION

2.1 Recommended Dosage

3 DOSAGE FORMS AND STRENGTHS

4 CONTRAINDICATIONS

5 WARNINGS AND PRECAUTIONS

5.1 Dermatologic Adverse Reactions

5.2 Gingival and Periodontal Adverse Reactions

5.3 Live Attenuated Vaccines

6 ADVERSE REACTIONS

6.1 Clinical Trials Experience

8 USE IN SPECIFIC POPULATIONS

- 8.1 Pregnancy
- 8.2 Lactation
- 8.4 Pediatric Use
- 8.5 Geriatric Use

10 OVERDOSAGE

11 DESCRIPTION

12 CLINICAL PHARMACOLOGY

- 12.1 Mechanism of Action
- 12.2 Pharmacodynamics
- 12.3 Pharmacokinetics

13 NONCLINICAL TOXICOLOGY

- 13.1 Carcinogenesis, Mutagenesis, Impairment of Fertility

14 CLINICAL STUDIES

16 HOW SUPPLIED/STORAGE AND HANDLING

17 PATIENT COUNSELING INFORMATION

* Sections or subsections omitted from the full prescribing information are not listed.

FULL PRESCRIBING INFORMATION

1 INDICATIONS AND USAGE

BRINSUPRI is indicated for the treatment of non-cystic fibrosis bronchiectasis (NCFB) in adult and pediatric patients 12 years of age and older.

2 DOSAGE AND ADMINISTRATION

2.1 Recommended Dosage

The recommended dosage of BRINSUPRI is as follows:

- 10 mg orally once daily with or without food
- or
- 25 mg orally once daily with or without food

Missed Dose(s)

Patients who miss a dose should take the next dose at their regular time the next day. Do not double the dose to make up for the missed dose.

3 DOSAGE FORMS AND STRENGTHS

Tablets:

- 10 mg, brown, round, film-coated tablets debossed with "10" on one side and "BRE" on the other
- 25 mg, gray, round, film-coated tablets debossed with "25" on one side and "BRE" on the other

4 CONTRAINDICATIONS

None.

5 WARNINGS AND PRECAUTIONS

5.1 Dermatologic Adverse Reactions

Treatment with BRINSUPRI is associated with an increase in dermatologic adverse reactions, including rash, dry skin, and hyperkeratosis [see *Adverse Reactions (6.1)*]. Monitor patients for development of new rashes or skin conditions and refer patients to a dermatologist for evaluation of new dermatologic findings.

5.2 Gingival and Periodontal Adverse Reactions

Treatment with BRINSUPRI is associated with an increase in gingival and periodontal adverse reactions [see *Adverse Reactions (6.1)*]. Refer patients to dental care services for regular dental checkups while taking BRINSUPRI. Advise patients to perform routine dental hygiene.

5.3 Live Attenuated Vaccines

The concomitant use of BRINSUPRI and live attenuated vaccines has not been evaluated. It is unknown whether administration of live attenuated vaccines during BRINSUPRI treatment will affect the safety or effectiveness of these vaccines. The use of live attenuated vaccines should be avoided in patients receiving BRINSUPRI.

6 ADVERSE REACTIONS

The following adverse reactions are described elsewhere in the labeling:

- Dermatologic Adverse Reactions [see *Warnings and Precautions (5.1)*]
- Gingival and Periodontal Adverse Reactions [see *Warnings and Precautions (5.2)*]

6.1 Clinical Trials Experience

Because clinical trials are conducted under widely varying conditions, adverse reaction rates observed in the clinical trials of a drug cannot be directly compared to rates in the clinical trials of another drug and may not reflect the rates observed in practice.

The safety data below reflect the safety of BRINSUPRI in adult and pediatric patients aged 12 years and older with non-cystic fibrosis bronchiectasis (NCFB). A total of 1721 patients with NCFB were randomized in a double-blind, placebo-controlled clinical trial of 52 weeks duration (ASPEN) [see *Clinical Studies (14)*]. The safety of BRINSUPRI was based on data from 1719 adult and pediatric patients aged 12 years and older who received at least one dose of BRINSUPRI or placebo. A total of 1156 patients received at least one dose of BRINSUPRI 10 mg or 25 mg orally once daily.

Table 1 shows the adverse reactions occurring at an incidence of $\geq 2\%$ and higher in BRINSUPRI-treated patients compared to placebo in the safety population from ASPEN.

Table 1 Adverse Reactions with BRINSUPRI with an Incidence of $\geq 2\%$ and More Common than Placebo in ASPEN

Adverse Reaction	Placebo (N=563) n (%)	BRINSUPRI 10 mg QD (N=582) n (%)	BRINSUPRI 25 mg QD (N=574) n (%)
Upper respiratory tract infection*	141 (25)	157 (27)	169 (29)
Headache	39 (7)	39 (7)	49 (9)
Rash†	22 (4)	25 (4)	35 (6)
Dry skin‡	8 (1)	17 (3)	25 (4)
Hyperkeratosis§	5 (1)	8 (1)	16 (3)
Hypertension	17 (3)	28 (5)	13 (2)

* Upper respiratory tract infection includes coronavirus infection, COVID-19, influenza, upper respiratory tract infection, viral infection, and viral upper respiratory tract infection.

† Rash includes rash, rash maculo-papular, rash pruritic, rash erythematous, dermatitis, and erythema.

‡ Dry skin includes dry skin, chapped lips, cheilitis, lip dry, skin exfoliation, skin fissures, xeroderma, and xerosis.

§ Hyperkeratosis includes hyperkeratosis, palmoplantar keratoderma, and skin hypertrophy.

Adverse Reactions in WILLOW

A total of 256 adult patients with NCFB were randomized in the 24-week, double-blind, placebo-controlled clinical trial (WILLOW). Of those randomized, 255 adult patients received BRINSUPRI 10 mg, BRINSUPRI 25 mg, or placebo, which consisted of 170 adults treated with at least one dose of BRINSUPRI 10 mg or 25 mg orally once daily. The safety profile for adult patients with NCFB in WILLOW was generally similar to ASPEN, with the exception of a higher incidence of gingival and periodontal adverse reactions. The incidence of gingival and periodontal adverse reactions in WILLOW among patients treated with BRINSUPRI 10 mg and 25 mg were 9.9% and 10.1%, respectively, compared to 2.4% in placebo-treated patients.

Less Common Adverse Reactions

Liver Function Test Elevations

In ASPEN, there was an increase from baseline in average ALT, AST, and alkaline phosphatase levels at all time points from Week 4 through Week 56 in both BRINSUPRI 10 mg and 25 mg arms compared to placebo. The incidence of ALT $>3\times$ upper limit of normal (ULN) was 0%, 1.2%, and 0.9%, in patients treated with placebo and BRINSUPRI 10 mg and 25 mg, respectively. The incidence of AST $>3\times$ ULN was 0.2%, 0.3%, and 0.5% in patients treated with placebo and BRINSUPRI 10 mg and 25 mg, respectively. The incidence of alkaline phosphatase $>1.5\times$ ULN was 2.5%, 4.1%, and 4.0% in patients treated with placebo and BRINSUPRI 10 mg and 25 mg, respectively.

Skin Cancers

In ASPEN, the incidence of skin cancers among patients treated with BRINSUPRI 10 mg and 25 mg was 0.5% and 1.9%, respectively, compared to 1.1% in placebo-treated patients.

Alopecia

In ASPEN, the incidence of alopecia among patients treated with BRINSUPRI 10 mg and 25 mg was 1.5% and 1.6%, respectively, compared to 0.4% in placebo-treated patients.

8 USE IN SPECIFIC POPULATIONS

8.1 Pregnancy

Risk Summary

There are no available data on BRINSUPRI use in pregnant women to evaluate for a drug-associated risk of major birth defects, miscarriage, or other adverse maternal or fetal outcomes.

In animal embryo fetal development (EFD) studies, oral administration of brensocatib to pregnant rats during organogenesis at maternal exposures 128 times the maximum recommended human dose (MRHD) on an AUC basis was associated with malformations. Oral administration of brensocatib to pregnant rabbits during organogenesis demonstrated no adverse developmental effects at doses that produced maternal exposures up to 20 times the MRHD. No adverse development effects were observed after oral administration of brensocatib to pregnant rats from the period of organogenesis through lactation at doses that produced maternal exposures 17 times the MRHD on an AUC basis (*see Data*).

The estimated background risk of major birth defects and miscarriage for the indicated population is unknown. All pregnancies have a background risk of birth defect, loss, or other adverse outcomes. In the U.S. general population, the estimated background risk of major birth defects and miscarriage in clinically recognized pregnancies is 2% to 4% and 15% to 20%, respectively.

Data

Animal Data

In a rat fertility and EFD study, brensocatib was administered at oral doses of 3, 20, and 100 mg/kg/day to female rats 2 weeks prior to mating, during mating, and through organogenesis until gestation Day 16. The malformation of bent scapula was observed at a maternal dose of 100 mg/kg/day (128 times the MRHD on an AUC basis). There were no adverse findings at maternal oral doses of 20 mg/kg/day (42 times the MRHD on an AUC basis). In a rabbit EFD study, brensocatib was administered at oral doses of 5, 15, or 50 mg/kg/day from gestation Days 7 to 19, a period that covers implantation and major organogenesis. Brensocatib was not associated with adverse effects on the fetus at maternal exposures up to 20 times the MRHD on an AUC basis. Maternal toxicity as indicated by reductions in body weight gain and food consumption was noted at maternal doses of 15 mg/kg/day and greater (greater than 5 times the MRHD on an AUC basis). In a pre- and postnatal development study, oral administration of brensocatib to pregnant rats at doses of 3, 9, or 20 mg/kg/day from gestation Day 6 through lactation Day 20 resulted in no adverse developmental effects in pups at maternal doses up to 20 mg/kg/day (17 times the MRHD on an AUC basis).

8.2 Lactation

Risk Summary

There are no data on the presence of brensocatib and/or its metabolite(s) in human milk, the effects on the breastfed infant, or the effects on milk production.

The developmental and health benefits of breastfeeding should be considered along with the mother's clinical need for BRINSUPRI and any potential adverse effects on the breastfed child from BRINSUPRI or from the underlying maternal condition.

8.4 Pediatric Use

The safety and effectiveness of BRINSUPRI for the treatment of NCFB have been established in pediatric patients aged 12 years and older. Use of BRINSUPRI for this indication is supported by evidence from an adequate and well-controlled trial (ASPEN), which enrolled 41 pediatric patients aged 12 years and older, and additional pharmacokinetic data in pediatric patients aged 12 to 17 years [see *Clinical Pharmacology (12.3) and Clinical Studies (14)*].

Common adverse reactions in pediatric patients aged 12 years and older enrolled in ASPEN were consistent with those in adults [see *Adverse Reactions (6.1)*].

The safety and effectiveness of BRINSUPRI have not been established in pediatric patients younger than 12 years of age.

8.5 Geriatric Use

There were 988 patients 65 years of age and older in the clinical studies for non-cystic fibrosis bronchiectasis [see *Clinical Studies (14)*]. Of the total number of BRINSUPRI-treated patients in these studies, 676 (51%) were 65 years of age and older while 201 (15%) were 75 years of age and older. No observed differences in safety and/or effectiveness in geriatric patients compared to younger adult patients [see *Clinical Pharmacology (12.3)*].

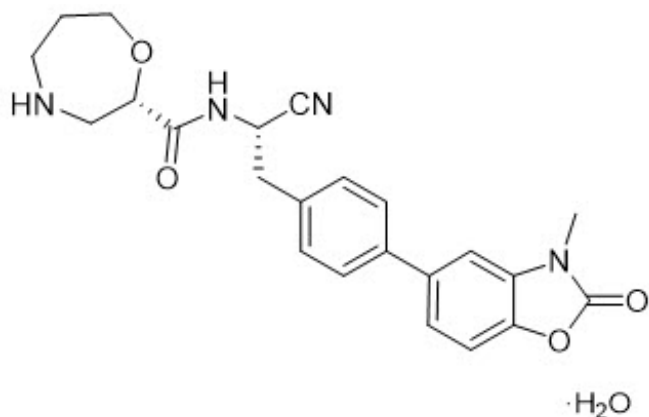
10 OVERDOSAGE

Consider contacting the Poison Help line (1-800-222-1222) or a medical toxicologist for overdose management recommendations.

11 DESCRIPTION

BRINSUPRI (brensocatib) is a dipeptidyl peptidase 1 (DPP1) inhibitor.

The chemical name for the active ingredient brensocatib monohydrate is (2S)-N-{(1S)-1-cyano-2-[4-(3-methyl-2-oxo-2,3-dihydro-1,3-benzoxazol-5-yl)phenyl]ethyl}-1,4-oxazepane-2-carboxamide monohydrate with a chemical formula of $C_{23}H_{24}N_4O_4 \cdot H_2O$ which corresponds to a molecular weight of 438.48 g/mol. Its structural formula is:



Brensocatib monohydrate drug substance is a white to off-white solid powder. It is slightly soluble at pH 1.2, freely soluble at pH 4.5, and very slightly soluble at pH 6.8 of aqueous media. It is also soluble in acetonitrile and sparingly soluble in ethanol.

BRINSUPRI tablets are available for oral administration in strengths of 10 mg and 25 mg brensocatib with the following inactive ingredients: dibasic calcium phosphate dihydrate, glyceryl dibehenate, microcrystalline cellulose, silicon dioxide, and sodium starch glycolate. The film coating contains ferrousferic oxide/black iron oxide, iron oxide yellow, and iron oxide red (10 mg) or ferrousferic oxide/black iron oxide (25 mg), macrogol/PEG, polyvinyl alcohol-partially hydrolyzed, talc, and titanium dioxide.

12 CLINICAL PHARMACOLOGY

12.1 Mechanism of Action

Brensocatib is a competitive, reversible inhibitor of dipeptidyl peptidase 1 (DPP1). DPP1 activates pro-inflammatory neutrophil serine proteases (NSPs) during neutrophil maturation in the bone marrow. Activated NSPs are implicated in the pathogenesis of neutrophil-mediated NCFB inflammation. In cell-based assays, DPP1 inhibition by brensocatib reduces the activity of NSPs including neutrophil elastase, cathepsin G, and proteinase 3.

12.2 Pharmacodynamics

Brensocatib prevents the activation of NSPs via DPP1 inhibition resulting in decreases in NSP activity in patients. In exploratory assays, brensocatib was associated with dose-dependent reductions in NSP activity in patients with NCFB.

Cardiac Electrophysiology

At concentrations approximately 2 times the steady state peak concentration of the maximum recommended daily dose of brensocatib in adult and adolescents with NCFB, clinically significant QTc interval prolongation was not observed.

12.3 Pharmacokinetics

Following once daily administration of brensocatib 10 mg, the estimated geometric mean (CV%) C_{max} is 85.4 ng/mL (33%) and AUC_{tau} is 1360 ng*h/mL (41%). Following once daily administration of brensocatib 25 mg, the estimated geometric mean (CV%) C_{max} is

259 ng/mL (31%) and AUC_{tau} is 4060 ng*h/mL (39%).

Brensocatib C_{max} and AUC_{tau} increase in a greater than dose proportional manner between doses of 10 mg and 1.6 times the highest recommended dose. Between doses of 10 mg and 1.6 times the highest recommended dose brensocatib once daily, brensocatib geometric mean steady state C_{max} increased by 5.1-fold and AUC_{tau} increased by 5.3-fold. In healthy subjects, at steady state, C_{max} increased by about 1.5-fold and AUC_{tau} increased by about 2-fold when compared to those observed following a single dose.

No clinically relevant differences in brensocatib pharmacokinetics were observed between healthy subjects and patients with NCFB.

Absorption

The absolute oral bioavailability of brensocatib has not been studied in humans. Based on data from a mass balance study in healthy subjects, the oral absorption of brensocatib in humans is greater than 80%. Following a single dose of 10 mg or 25 mg brensocatib, the median (min, max) time to maximum plasma concentration (T_{max}) is 1.0-1.4 hours (0.5, 3.0 hours).

Effect of Food

No clinically relevant differences in brensocatib pharmacokinetics were observed following administration of brensocatib with a high-fat meal (990 calories, 52% fat).

Distribution

Following once daily administration of 10 mg or 25 mg brensocatib in patients with NCFB, the estimated volume of distribution at steady state ranged from 126 to 138 L. The protein binding of brensocatib in human plasma was 87.2%.

Elimination

Following a single oral administration of brensocatib at 10 mg or 25 mg in healthy subjects, the elimination half-life ranged from 25 to 39 hours and the apparent oral clearance ranged from 6.4 to 10.7 L/hour.

Metabolism

Brensocatib is primarily metabolized by CYP3A and to a lesser extent by CYP2C8 and CYP2D6. Brensocatib accounted for 16.2% of the total radioactivity in plasma. One major circulating metabolite, thiocyanate, was identified in plasma and accounted for 51% of the total radioactivity AUC following administration of a radio-labeled brensocatib dose. In patients with NCFB at recommended doses of brensocatib, no clinically meaningful changes of plasma thiocyanate from baseline were observed.

Excretion

Following administration of a single oral dose of radiolabeled brensocatib 1.6 times the highest recommended dose to healthy subjects, 54.2% of dose was recovered in urine (22.8% as unchanged brensocatib) and 28.3% of dose was recovered in feces (2.4% as unchanged brensocatib).

Specific Populations

No clinically significant differences in the pharmacokinetics of brensocatib were observed based on age (12 to 85 years), sex, race (72% White, 6% Black, and 12%

Asian), or body weight (32 to 155 kg).

No clinically significant differences in the pharmacokinetics of brensocatib were observed based on mild, moderate, or severe renal impairment (eGFR 15-89 mL/min/1.73 m²); or mild, moderate, or severe hepatic impairment (Child-Pugh Class A, B, or C).

Drug Interaction Studies

Clinical Studies and Model-Informed Approaches

Strong CYP3A4 and P-gp Inhibitors: Brensocatib C_{max} increased by 68% and AUC increased by 55% following concomitant administration with clarithromycin (a strong CYP3A4 and P-gp inhibitor) 500 mg twice daily for 6 days.

Moderate CYP3A4 and P-gp Inhibitors: Brensocatib C_{max} increased by 53% and AUC increased by 32% following concomitant administration with verapamil (a moderate CYP3A4 and P-gp inhibitor) 240 mg once daily for 5 days.

Strong CYP3A4 Inducers: Brensocatib C_{max} decreased by 15% and AUC decreased by 33% following concomitant administration with rifampin (a strong CYP3A4 inducer) 600 mg once daily for 9 days.

Acid-Reducing Agents: Brensocatib C_{max} and AUC were unchanged following concomitant administration with esomeprazole (a proton-pump inhibitor) 40 mg once daily for 4 days.

CYP3A4 Substrates: No clinically significant differences in the pharmacokinetics of midazolam (a sensitive CYP3A4 substrate) are predicted when used concomitantly with brensocatib.

In Vitro Studies

CYP450 Enzymes: Brensocatib is a substrate of CYP3A. Brensocatib does not inhibit CYP1A2, CYP2B6, CYP2C8, CYP2C9, CYP2C19, CYP2D6, or CYP3A. Brensocatib is a weak CYP3A inducer, but not an inducer of CYP1A2, CYP2B6, CYP2C8, CYP2C9, or CYP2C19.

Transporter Systems: Brensocatib is a substrate of P-glycoprotein (P-gp) and breast cancer resistance protein (BCRP), but is not a substrate of MATE1, MATE2-K, OAT1, OAT3, OATP1B1, OATP1B3, OCT1, and OCT2. Brensocatib is an inhibitor of BCRP, OATP1B, MATE1, and MATE2-K, but is not an inhibitor of P-gp, OAT1, OCT2, OAT3, or OATP1B3.

13 NONCLINICAL TOXICOLOGY

13.1 Carcinogenesis, Mutagenesis, Impairment of Fertility

A two-year study in Han Wistar rats and a 6-month study in Tg.rasH2 transgenic mice were conducted to assess the carcinogenic potential of brensocatib. No evidence of tumorigenicity was observed in male or female rats at an exposure approximately 56 times the MRHD on an AUC basis. No evidence of tumorigenicity was observed in male and female Tg.rasH2 mice at oral doses up to 50 mg/kg/day, the highest dose tested. Brensocatib was negative for genotoxicity in the following assays: *in vitro* bacterial reverse mutation (Ames) assay, *in vitro* mouse lymphoma mutation assay, and *in vivo* micronucleus assay in rats.

Oral administration of brensocatib to male and female rats at up to 50 and 100 mg/kg/day, respectively, had no adverse effects on fertility and reproductive performance indices (150 and 231 times the MRHD on an AUC basis, respectively).

14 CLINICAL STUDIES

The efficacy of BRINSUPRI was evaluated in two randomized, double-blind, placebo-controlled, parallel-group, multicenter, multinational clinical trials (ASPEN [NCT04594369] and WILLOW [NCT03218917]).

ASPEN was a 52-week trial that included 1721 adult and pediatric patients 12 years of age and older with NCFB (1680 adults and 41 pediatric patients 12 years of age to less than 18 years of age) who were randomized to BRINSUPRI 10 mg (n=583), BRINSUPRI 25 mg (n=575), or placebo (n=563) administered orally once daily.

WILLOW was a 24-week trial that included 256 adult patients with NCFB who were randomized to BRINSUPRI 10 mg (n=82), BRINSUPRI 25 mg (n=87), or placebo (n=87) administered orally once daily.

In both ASPEN and WILLOW, all adult patients had a history of confirmed NCFB by chest computed tomography with at least 2 documented pulmonary exacerbations (PE_x) prior to screening in the past 12 months. In ASPEN, pediatric patients 12 years of age and older had at least one PE_x in the prior 12 months.

Demographics and baseline characteristics of patients in ASPEN and WILLOW are provided in Table 2.

Table 2 Demographics and Baseline Characteristics of Patients in ASPEN and WILLOW

	ASPEN (N=1721)	WILLOW (N=256)
Age (years), mean (SD)	60 (16)	64 (12)
Female n (%)	1107 (64)	174 (68)
White n (%)	1266 (74)	225 (88)
Black or African American n (%)	10 (1)	4 (2)
Asian n (%)	191 (11)	23 (9)
Hispanic or Latino n (%)	511 (30)	6 (2)
≥3 PE _x in prior 12 months n (%)	502 (29)	84 (33)
Former smoker n (%)	510 (30)	86 (34)
ppFEV ₁ post-bronchodilator, mean (SD)	74 (23)	68 (24)
Sputum positive for <i>Pseudomonas aeruginosa</i> n (%)	607 (35)	89 (35)
Chronic macrolide therapy n (%)	329 (19)	40 (16)

Abbreviations: N, number of patients in the intent-to-treat analysis set; n, number of patients; PE_x, pulmonary exacerbations; pp, percent predicted; FEV₁, forced expiratory volume in 1 second; SD, standard deviation

ASPEN

The primary efficacy endpoint in ASPEN was the annualized rate of PEx over the 52-week treatment period.

Pulmonary exacerbations were defined as worsening of 3 or more of the following major symptoms over 48 hours: increased cough, increased sputum volume or change in sputum consistency, increased sputum purulence, increased breathlessness, decreased exercise tolerance, fatigue and/or malaise, and hemoptysis, resulting in a healthcare provider's decision to prescribe systemic antibiotics. Pulmonary exacerbations were considered severe if requiring treatment with intravenous antibacterial drugs and/or resulted in hospitalization.

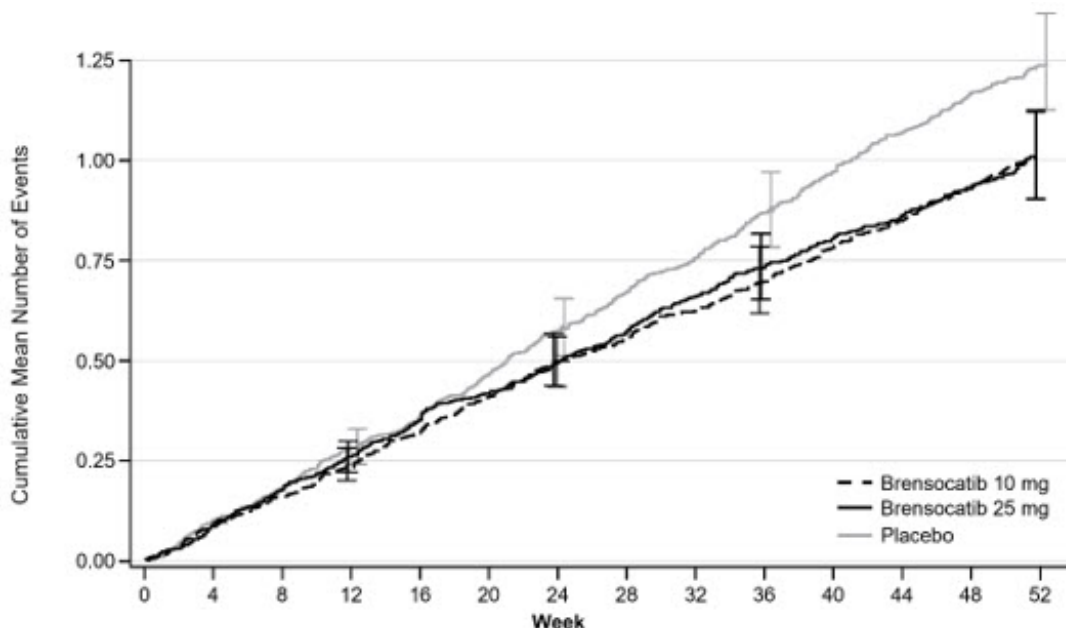
Treatment with BRINSUPRI 10 mg or 25 mg in patients with NCFB demonstrated reductions in the mean rate of PEx over 52 weeks compared with placebo (Figure 1). Table 3 provides the results of the annualized rate of PEx, and the results of the key secondary endpoints in ASPEN of time to first PEx, proportion of patients remaining exacerbation free throughout the 52-week treatment period, annualized rate of severe PEx, and the change from baseline in post-bronchodilator FEV₁.

Table 3 Primary and Key Secondary Efficacy Analyses of Pulmonary Exacerbations and FEV₁ Over 52 Weeks in ASPEN

	Placebo (N=563)	BRINSUPRI 10 mg (N=583)	BRINSUPRI 25 mg (N=575)
Annualized Rate of PEx	1.29	1.02	1.04
Rate Ratio (95% CI)	--	0.79 (0.68, 0.92)	0.81 (0.69, 0.94)
Median Time to First PEx (weeks)	36.71	49.00	50.71
Hazard Ratio (95% CI)	--	0.81 (0.70, 0.95)	0.83 (0.70, 0.97)
Proportion of Patients that were PEx Free at Week 52 (%)	40.3	48.5	48.5
Odds Ratio (95% CI)	--	1.41 (1.11, 1.81)	1.40 (1.10, 1.79)
Annualized Rate of Severe PEx	0.19	0.14	0.14
Rate Ratio (95% CI)	--	0.74 (0.51, 1.09)	0.74 (0.52, 1.06)
LS Mean Change from Baseline in Post-Bronchodilator FEV₁ (mL) at Week 52	-62	-50	-24
Difference vs Placebo (95% CI)	--	11 (-14, 37)	38 (11, 65)

Abbreviations: FEV₁, forced expiratory volume in 1 second; LS, least squares; PEx, pulmonary exacerbation

Figure 1 Cumulative Mean Number of Pulmonary Exacerbations through Week 52



WILLOW

The primary efficacy endpoint in WILLOW was the time to first PEX over the 24-week treatment period. The time to first PEX was longer for patients receiving BRINSUPRI 10 mg and 25 mg compared to placebo (hazard ratio BRINSUPRI 10 mg and 25 mg versus placebo; 0.58 and 0.62, respectively; 95% CI: 0.35 to 0.95 and 0.38 to 0.99, respectively).

16 HOW SUPPLIED/STORAGE AND HANDLING

BRINSUPRI (brensocatib) tablets are supplied as described in Table 4:

Table 4 BRINSUPRI Tablets and Package Configuration

Strength	Tablet Description	Package Configuration	NDC
10 mg	brown, round, film-coated tablets debossed with "10" on one side and "BRE" on the other	bottles of 30 tablets	71558-001-30
25 mg	gray, round, film-coated tablets debossed with "25" on one side and "BRE" on the other	bottles of 30 tablets	71558-002-30

Store at 20°C to 25°C (68°F to 77°F); excursions permitted between 15°C to 30°C (59°F to 86°F) [see USP Controlled Room Temperature]. Store in original container.

17 PATIENT COUNSELING INFORMATION

Advise the patient to read the FDA-approved patient labeling (Patient Information).

Dermatologic Adverse Reactions

Inform patients that BRINSUPRI is associated with a risk of adverse skin reactions including rash, dry skin, and hyperkeratosis. Advise patients to monitor their skin and report any new rash or skin condition [see *Warnings and Precautions* (5.1)].

Gingival and Periodontal Adverse Reactions

Inform patients that BRINSUPRI is associated with a risk of gingival and periodontal adverse reactions. Advise patients to have regular dental checkups while taking BRINSUPRI. Advise patients to perform routine dental hygiene [see *Warnings and Precautions* (5.2)].

Live Attenuated Vaccines

Instruct patients to inform the healthcare provider that they are taking BRINSUPRI prior to a potential vaccination [see *Warnings and Precautions* (5.3)].

Manufactured for:
Insmmed Incorporated
Bridgewater, NJ 08807

© Insmmed Incorporated 2025

BRINSUPRI and Insmmed are trademarks of Insmmed Incorporated.

For patent information: <https://insmed.com/program-patents/>

For more information, go to www.BRINSUPRI.com or call 1-844-4-INSMED (1-844-446-7633).

<p>Patient Information BRINSUPRI (brin-SOO-pree) (brensocatib) tablets, for oral use</p>
--

<p>What is BRINSUPRI?</p>

<p>BRINSUPRI is a prescription medicine used to treat non-cystic fibrosis bronchiectasis (NCFB) in adults and children 12 years of age and older. It is not known if BRINSUPRI is safe and effective in children under 12 years of age.</p>

<p>Before taking BRINSUPRI, tell your healthcare provider about all of your medical conditions, including if you:</p>
--

- | |
|--|
| <ul style="list-style-type: none">• have recently received or are scheduled to receive any live attenuated vaccinations.• are pregnant or plan to become pregnant. It is not known if BRINSUPRI will harm your unborn baby.• are breastfeeding or plan to breastfeed. It is not known if BRINSUPRI passes into your breast milk. Talk to your healthcare provider about the best way to feed your baby during this time. |
|--|

<p>Tell your healthcare provider about all the medicines you take, including prescription and over-the-counter medicines, vitamins, and herbal supplements. Do not change or stop your medicines unless your healthcare provider tells you to.</p>

How should I take BRINSUPRI?

- Take BRINSUPRI exactly as your healthcare provider tells you to take it.
- Take 1 BRINSUPRI tablet by mouth daily with or without food.
- If you forget to take a dose of BRINSUPRI, take your next dose at your regular time the next day.
- Do not double the dose to make up for the missed dose.

What are the possible side effects of BRINSUPRI?

BRINSUPRI may cause serious side effects including:

- **Skin problems.** Tell your healthcare provider about any new skin symptoms. Your healthcare provider may send you to a dermatologist for an examination if needed.
- **Dental problems.** Get regular dental checkups while taking BRINSUPRI. Brush and clean your teeth as recommended by your dentist. Tell your healthcare provider and contact your dentist if you experience new gum (gingival) or teeth (dental) symptoms.

Common side effects of BRINSUPRI include:

- upper respiratory tract infection
- headache
- rash
- dry skin
- small areas of skin thickening (hyperkeratosis)
- high blood pressure (hypertension)

Less common side effects include abnormal liver blood test, hair loss (alopecia), and skin cancers.

These are not all of the possible side effects of BRINSUPRI.

Call your doctor for medical advice about side effects. You may also report side effects to FDA at 1-800-FDA-1088 or www.fda.gov/medwatch.

How should I store BRINSUPRI?

- Store BRINSUPRI at room temperature between 68°F to 77°F (20°C to 25°C).
- Keep BRINSUPRI in its original bottle.

Keep BRINSUPRI and all medicines out of the reach of children.

General information about the safe and effective use of BRINSUPRI

Medicines are sometimes prescribed for purposes other than those listed in a Patient Information leaflet. Do not use BRINSUPRI for a condition for which it was not prescribed. Do not give BRINSUPRI to other people, even if they have the same symptoms that you have. It may harm them. You can ask your pharmacist or healthcare provider for information about BRINSUPRI that is written for health professionals.

What are the ingredients in BRINSUPRI?

Active ingredient: brensocatib monohydrate

Inactive ingredients: dibasic calcium phosphate dihydrate, glyceryl dibehenate, microcrystalline cellulose, silicon dioxide, and sodium starch glycolate

Film coating: ferrousferrous oxide/black iron oxide, iron oxide yellow, and iron oxide red or ferrousferrous oxide/black iron oxide, macrogol/PEG, polyvinyl alcohol-partially hydrolyzed, talc, and titanium dioxide

Manufactured for: Inmed Incorporated, Bridgewater, NJ 08807

© Inmed Incorporated 2025

BRINSUPRI and Insméd are trademarks of Insméd Incorporated.
For patent information: <https://insmed.com/program-patents/>
For more information, go to www.BRINSUPRI.com or call 1-844-4-INSMED (1-844-446-7633).

This Patient Information has been approved by the
U.S. Food and Drug Administration

Issued: 08/2025

PRINCIPAL DISPLAY PANEL - 25 mg Tablet Bottle Label

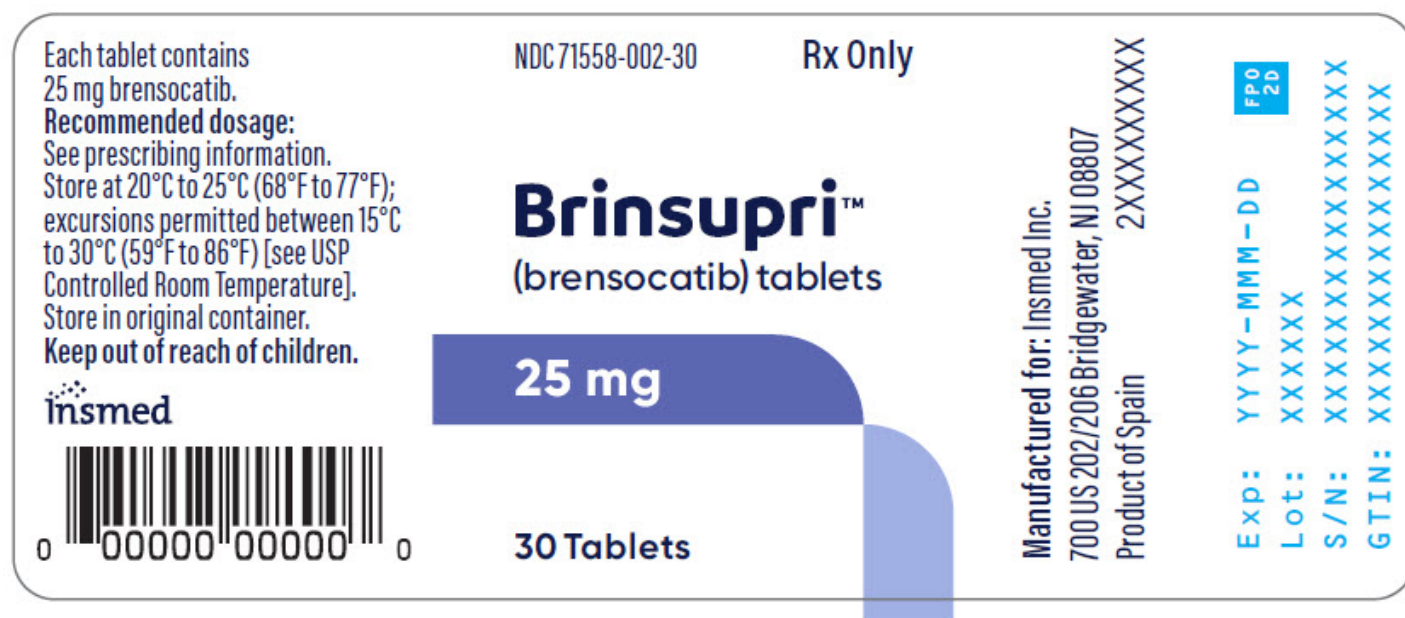
NDC 71558-002-30

Rx Only

Brinsupri™
(brensocatib) tablets

25 mg

30 Tablets



PRINCIPAL DISPLAY PANEL - 10 mg Tablet Bottle Label

NDC 71558-001-30

Rx Only


Brinsupri™
(brensocatib) tablets

10 mg

30 Tablets

Each tablet contains
10 mg brensocaticib.
Recommended dosage:
See prescribing information.
Store at 20°C to 25°C (68°F to 77°F);
excursions permitted between 15°C
to 30°C (59°F to 86°F) [see USP
Controlled Room Temperature].
Store in original container.
Keep out of reach of children.

insmed



0 00000 00000 0

NDC 71558-001-30

Rx Only

Brinsupri™
(brensocaticib) tablets

10 mg

30 Tablets

Manufactured for: Insmed Inc.
700 US 202/206 Bridgewater, NJ 08807
Product of Spain

2XXXXXXX

FPD
2D

Exp: YYYY-MM-DD

Lot: XXXXX

S/N: XXXXXXXXXXXXX

GTIN: XXXXXXXXXXXXX

BRINSUPRI

brensocaticib tablet

Product Information

Product Type	HUMAN PRESCRIPTION DRUG	Item Code (Source)	NDC:71558-002
Route of Administration	ORAL		

Active Ingredient/Active Moiety

Ingredient Name	Basis of Strength	Strength
Brensocaticib (UNII: 25CG88L0BB) (Brensocaticib - UNII:25CG88L0BB)	Brensocaticib	25 mg

Inactive Ingredients

Ingredient Name	Strength
Microcrystalline Cellulose (UNII: OP1R32D61U)	
Dibasic Calcium Phosphate Dihydrate (UNII: O7TSZ97GEP)	
SODIUM STARCH GLYCOLATE TYPE A (UNII: H8AV0SQX4D)	
Silicon Dioxide (UNII: ETJ7Z6XBU4)	
Glyceryl Dibehenate (UNII: R8WTH25YS2)	

Product Characteristics

Color	GRAY	Score	no score
Shape	ROUND	Size	9mm
Flavor		Imprint Code	25;BRE
Contains			

Packaging				
#	Item Code	Package Description	Marketing Start Date	Marketing End Date
1	NDC:71558-002-30	30 in 1 BOTTLE; Type 0: Not a Combination Product	08/12/2025	

Marketing Information			
Marketing Category	Application Number or Monograph Citation	Marketing Start Date	Marketing End Date
NDA	NDA217673	08/12/2025	

BRINSUPRI			
brensocatib tablet			

Product Information			
Product Type	HUMAN PRESCRIPTION DRUG	Item Code (Source)	NDC:71558-001
Route of Administration	ORAL		

Active Ingredient/Active Moiety		
Ingredient Name	Basis of Strength	Strength
Brensocatib (UNII: 25CG88L0BB) (Brensocatib - UNII:25CG88L0BB)	Brensocatib	10 mg

Inactive Ingredients	
Ingredient Name	Strength
Microcrystalline Cellulose (UNII: OP1R32D61U)	
Dibasic Calcium Phosphate Dihydrate (UNII: O7TSZ97GEP)	
SODIUM STARCH GLYCOLATE TYPE A (UNII: H8AV0SQX4D)	
Silicon Dioxide (UNII: ETJ7Z6XBU4)	
Glyceryl Dibehenate (UNII: R8WTH25YS2)	

Product Characteristics			
Color	BROWN	Score	no score
Shape	ROUND	Size	9mm
Flavor		Imprint Code	10;BRE
Contains			

Packaging				
#	Item Code	Package Description	Marketing Start Date	Marketing End Date
1	NDC:71558-001-30	30 in 1 BOTTLE; Type 0: Not a Combination Product	08/12/2025	

Marketing Information

Marketing Category	Application Number or Monograph Citation	Marketing Start Date	Marketing End Date
NDA	NDA217673	08/12/2025	

Labeler - Insmmed Incorporated (183470066)

Establishment

Name	Address	ID/FEI	Business Operations
Patheon Inc.		205475333	MANUFACTURE(71558-002, 71558-001) , PACK(71558-002, 71558-001) , ANALYSIS(71558-002, 71558-001)

Establishment

Name	Address	ID/FEI	Business Operations
Esteve Huayi Pharmaceutical Co., Ltd.		528179890	API MANUFACTURE(71558-002, 71558-001) , ANALYSIS(71558-002, 71558-001)

Establishment

Name	Address	ID/FEI	Business Operations
Esteve Quimica, SA		633485529	API MANUFACTURE(71558-002, 71558-001) , ANALYSIS(71558-002, 71558-001)

Revised: 8/2025

Insmmed Incorporated