

ADVIL PM- ibuprofen and diphenhydramine citrate tablet, coated
ADVIL PM, TRAVEL BASIX- ibuprofen and diphenhydramine citrate tablet, coated
ADVIL PM, CVP HEALTH- ibuprofen and diphenhydramine citrate tablet, coated
Lil' Drug Store Products, Inc.

Advil[®] PM
Lil' Drug Store[®], TRAVEL BASIX, CVP[®] HEALTH
Drug Facts

<i>Active ingredients (in each caplet)</i>	<i>Purposes</i>
Diphenhydramine citrate 38 mg	Nighttime sleep-aid
Ibuprofen 200 mg (NSAID) *	Pain reliever
* nonsteroidal anti-inflammatory drug	

Uses

- for relief of occasional sleeplessness when associated with minor aches and pains
- helps you fall asleep and stay asleep

Warnings

Allergy alert

Ibuprofen may cause a severe allergic reaction, especially in people allergic to aspirin. Symptoms may include:

- hives
- facial swelling
- asthma (wheezing)
- shock
- skin reddening
- rash
- blisters

If an allergic reaction occurs, stop use and seek medical help right away.

Stomach bleeding warning

This product contains an NSAID, which may cause severe stomach bleeding. The chance is higher if you

- are age 60 or older
- have had stomach ulcers or bleeding problems
- take a blood thinning (anticoagulant) or steroid drug
- take other drugs containing prescription or nonprescription NSAIDs [aspirin, ibuprofen, naproxen, or others]

- have 3 or more alcoholic drinks every day while using this product
- take more or for a longer time than directed

Heart attack and stroke warning

NSAIDs, except aspirin, increase the risk of heart attack, heart failure, and stroke. These can be fatal. The risk is higher if you use more than directed or for longer than directed.

Do not use

- if you have ever had an allergic reaction to any other pain reliever/fever reducer
- unless you have time for a full night's sleep
- in children under 12 years of age
- right before or after heart surgery
- with any other product containing diphenhydramine, even one used on skin
- if you have sleeplessness without pain

Ask a doctor before use if

- stomach bleeding warning applies to you
- you have problems or serious side effects from taking pain relievers or fever reducers
- you have a history of stomach problems, such as heartburn
- you have high blood pressure, heart disease, liver cirrhosis, kidney disease, asthma, or had a stroke
- you are taking a diuretic
- you have a breathing problem such as emphysema or chronic bronchitis
- you have glaucoma
- you have trouble urinating due to an enlarged prostate gland

Ask a doctor or pharmacist before use if you are

- taking sedatives or tranquilizers, or any other sleep-aid
- under a doctor's care for any continuing medical illness
- taking any other antihistamines
- taking aspirin for heart attack or stroke, because ibuprofen may decrease this benefit of aspirin
- taking any other drug

When using this product

- drowsiness will occur
- avoid alcoholic drinks
- do not drive a motor vehicle or operate machinery
- take with food or milk if stomach upset occurs

Stop use and ask a doctor if

- you experience any of the following signs of stomach bleeding:
 - feel faint
 - vomit blood
 - have bloody or black stools
 - have stomach pain that does not get better
- you have symptoms of heart problems or stroke:

- chest pain
- trouble breathing
- weakness in one part or side of body
- slurred speech
- leg swelling
- pain gets worse or lasts more than 10 days
- sleeplessness persists continuously for more than 2 weeks. Insomnia may be a symptom of a serious underlying medical illness.
- redness or swelling is present in the painful area
- any new symptoms appear

If pregnant or breast-feeding, ask a health professional before use. It is especially important not to use ibuprofen during the last 3 months of pregnancy unless definitely directed to do so by a doctor because it may cause problems in the unborn child or complications during delivery.

Keep out of reach of children. In case of overdose, get medical help or contact a Poison Control Center right away.

Directions

- **do not take more than directed**
- adults and children 12 years and over: take 2 caplets at bedtime
- do not take more than 2 caplets in 24 hours

Other information

- read all warnings and directions before use. Keep carton
- store at 20-25°C (68-77°F)
- avoid excessive heat above 40°C (104°F)

Inactive ingredients

calcium stearate, carnauba wax, colloidal silicon dioxide, corn starch, croscarmellose sodium, FD&C blue no. 2 aluminum lake, glyceryl behenate, hypromellose, lactose monohydrate, microcrystalline cellulose, pharmaceutical ink, polydextrose, polyethylene glycol, pregelatinized starch, sodium lauryl sulfate, sodium starch glycolate, stearic acid, titanium dioxide

Questions or comments?

Call weekdays 9 AM to 5 PM EST at **1-800-88-ADVIL**

Repackaged and distributed with permission of Pfizer Consumer Healthcare by:

Lil' Drug Store Products, Inc., 1201 Continental Place NE, Cedar Rapids, IA 52402

Advil PM, 6ct, Lil' Drug Store ® - PDP/Package

Advil® PM

Ibuprofen, 200 mg/ Diphenhydramine citrate, 38 mg Pain Reliever (NSAID)/ Nighttime Sleep-Aid

[caplet image]

6 Coated Caplets*

*Capsule-Shaped Tablets

[Lil' Drug Store® logo]

Drug Facts (continued)

- redness or swelling is present in the painful area
- any new symptoms appear
- If pregnant or breast-feeding, ask a health professional before use. It is especially important not to use ibuprofen at 20 weeks or later in pregnancy unless definitely directed to do so by a doctor because it may cause problems in the unborn child or complications during delivery.
- Keep out of reach of children. In case of overdose, get medical help or contact a Poison Control Center right away.

Directions

- do not take more than directed
- adults and children 12 years and over: take 2 caplets at bedtime
- do not take more than 2 caplets in 24 hours

Do Not Use if pouch is broken or torn.

For most recent product information, visit www.Advils.com
For US Patent or Application status, see <http://www.productpatents.com>
GSK Consumer Healthcare, Warren, NJ 07059
©2013 GSK group of companies or its licensee.
Trademarks are owned by or licensed to the GSK group of companies
Repackaged and distributed with permission of GSK Consumer Healthcare by:
Lil' Drug Store Products, Inc., 3000 East 1st Lane SW, Cedar Rapids, IA 52404
1-877-857-6100 (M-F 9AM-6PM CST) www.lildrugstore.com 973032 US-16-21

Drug Facts (continued)

Other information

- read all warnings and directions before use. Keep carton
- store at 20-25°C (68-77°F)
- avoid excessive heat above 40°C (104°F)

Inactive ingredients

calcium stearate, carnauba wax, colloidal silicon dioxide, corn starch, croscarmellose sodium, FD&C blue no. 2 aluminum lake, glyceryl dibehenate, hypromellose, lactose monohydrate, microcrystalline cellulose, pharmaceutical ink, polydextrose, polyethylene glycol, pregelatinized starch, sodium lauryl sulfate, sodium starch glycolate, stearic acid, titanium dioxide

Questions or comments?
Call weekdays 9 AM to 5 PM EST at 1-800-38-ADVIL

READ AND KEEP CARTON FOR COMPLETE WARNINGS AND INFORMATION

Drug Facts

Active ingredients (in each caplet)

Ibuprofen citrate 38 mg
Diphenhydramine citrate 38 mg
Ibuprofen 200 mg (NSAID)
*nonsteroidal anti-inflammatory drug

Purposes

Nighttime sleep-aid
Pain reliever

Uses

- for relief of occasional sleeplessness when associated with minor aches and pains
- helps you fall asleep and stay asleep

Warnings

Allergy alert: ibuprofen may cause a severe allergic reaction, especially in people allergic to aspirin. Symptoms may include:

- hives
- facial swelling
- asthma (wheezing)
- shock
- skin redness
- rash
- blisters

If an allergic reaction occurs, stop use and seek medical help right away.

Stomach bleeding warning: This product contains an NSAID, which may cause severe stomach bleeding. The chance is higher if you:

- are age 60 or older
- have had stomach ulcers or bleeding problems
- take other drugs containing prescription or nonprescription NSAIDs (aspirin, ibuprofen, naproxen, or others)
- take a blood thinning (anticoagulant) or steroid drug
- have 3 or more alcoholic drinks every day while using this product

Heart attack and stroke warning: NSAIDs, except aspirin, increase the risk of heart attack, heart failure, and stroke. These can be fatal. The risk is higher if you use more than directed or for longer than directed.

Do not use

- if you have ever had an allergic reaction to any other pain reliever/fever reducer
- unless you have time for a full night's sleep
- in children under 12 years of age

LIFT HERE For More Drug Facts

Drug Facts (continued)

- right before or after heart surgery
- with any other product containing diphenhydramine, even one used on skin
- if you have sleeplessness without pain

Ask a doctor before use if

- stomach bleeding warning applies to you
- you have problems or serious side effects from taking pain relievers or fever reducers
- you have a history of stomach problems, such as heartburn
- you have high blood pressure, heart disease, liver disease, kidney disease, asthma, or had a stroke
- you are taking a diuretic
- you have a breathing problem such as emphysema or chronic bronchitis
- you have glaucoma
- you have trouble urinating due to an enlarged prostate gland

Ask a doctor or pharmacist before use if you are

- taking sedatives or tranquilizers, or any other sleep-aid
- under a doctor's care for any continuing medical illness
- taking any other anticholinergics

Drug Facts (continued)

- taking aspirin for heart attack or stroke, because ibuprofen may decrease this benefit of aspirin
- taking any other drug

When using this product

- drowsiness will occur
- avoid alcoholic drinks
- do not drive a motor vehicle or operate machinery
- take with food or milk if stomach upset occurs

Step use and ask a doctor if

- you experience any of the following signs of stomach bleeding:
 - feel faint
 - vomit blood
 - have bloody or black stools
 - have stomach pain that does not get better
- you have symptoms of heart problems or stroke:
 - chest pain
 - trouble breathing
 - weakness in one part or side of body
 - slurred speech
 - leg swelling
- pain gets worse or lasts more than 10 days
- sleeplessness persists continuously for more than 2 weeks. Insomnia may be a symptom of a serious underlying medical illness.

Advil PM, 4ct TRAVEL BASIX - PDP/Package

Advil PM

Ibuprofen, 200 mg/

Diphenhydramine Citrate, 38 mg

Pain Reliever (**NSAID**)/

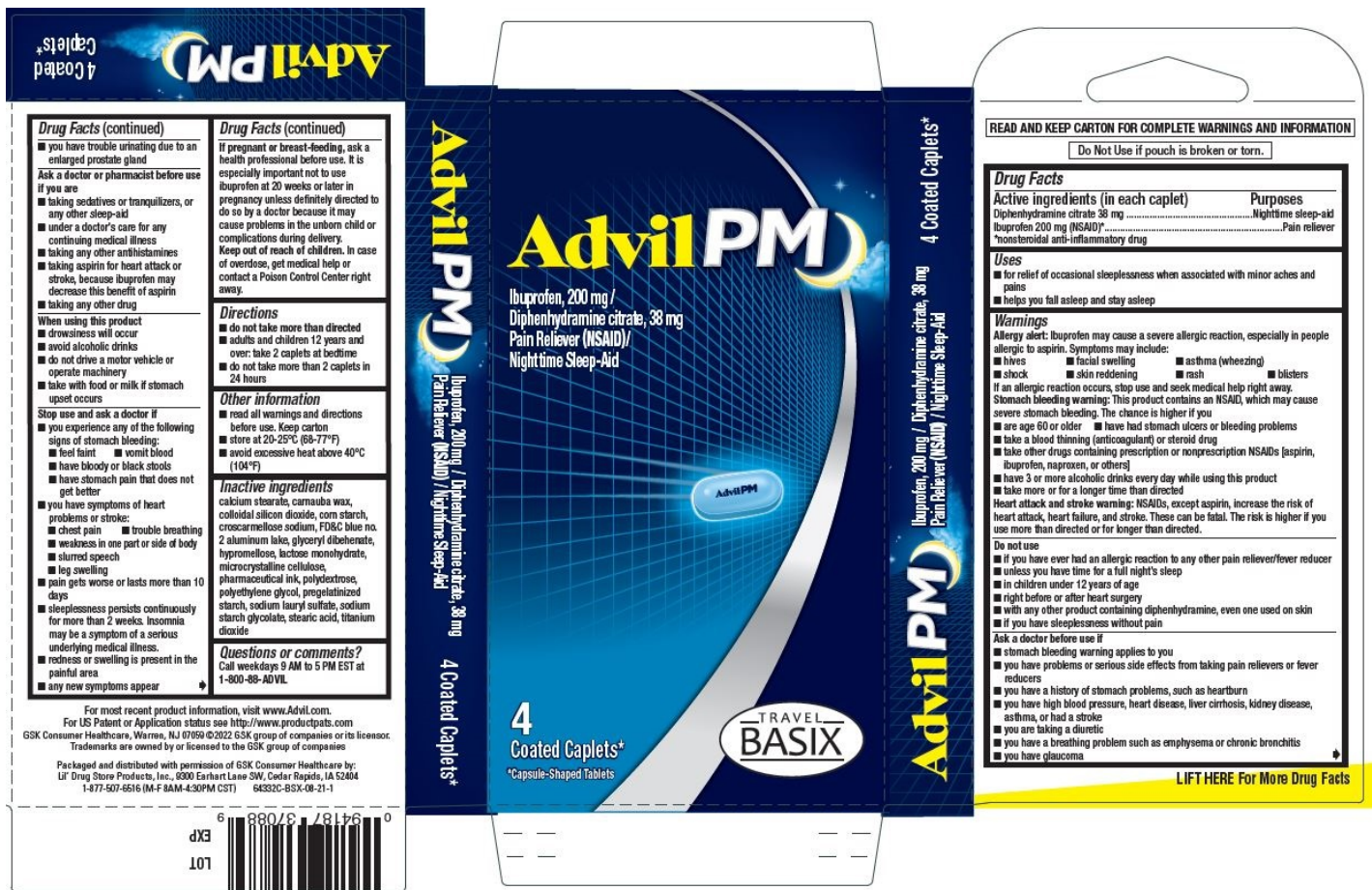
Nighttime Sleep-Aid

[caplet image]

4 Coated Caplets*

*Capsule-Shaped Tablets

[TRAVEL BASIX logo]



Advil PM 4ct, CVP® HEALTH - PDP/Package



Advil PM

Ibuprofen, 200 mg/
Diphenhydramine Citrate, 38 mg
Pain Reliever (NSAID)/
Nighttime Sleep-Aid
[caplet image]

4

Coated Caplets*

*Capsule-Shaped Tablets

[CVP® HEALTH logo]

AdvilPM 30pc Dispens-It Box, Lil' Drug Store ®

AdvilPM

**Ibuprofen, 200 mg/
Diphenhydramine citrate, 38 mg
Pain Reliever (NSAID)/
Nighttime Sleep-Aid**

[caplet image]

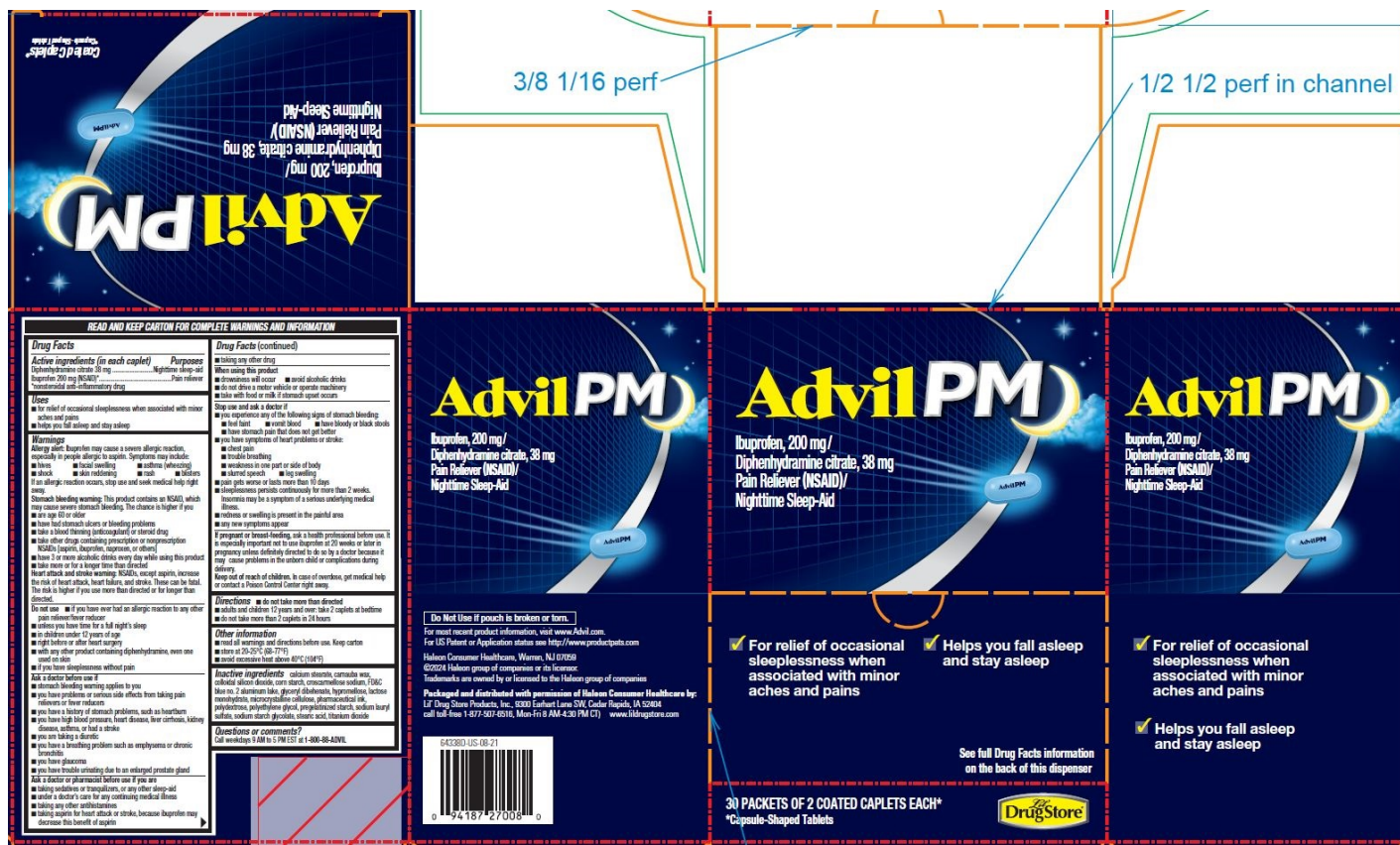
**For relief of occasional
sleeplessness when
associated with minor aches and pains**

**Helps you fall asleep
and stay asleep**

**See full Drug Facts information
on the back of this dispenser**

**30 PACKETS OF 2 COATED CAPLETS EACH*
*Capsule-Shaped Tablets**

[Lil' Drug Store® logo]



ADVIL PM

ibuprofen and diphenhydramine citrate tablet, coated

Product Information

Product Type	HUMAN OTC DRUG	Item Code (Source)	NDC:66715-9633
Route of Administration	ORAL		

Active Ingredient/Active Moiety

Ingredient Name	Basis of Strength	Strength
IBUPROFEN (UNII: WK2XYI10QM) (IBUPROFEN - UNII:WK2XYI10QM)	IBUPROFEN	200 mg
DIPHENHYDRAMINE CITRATE (UNII: 4OD433S209) (DIPHENHYDRAMINE - UNII:8GTS82S83M)	DIPHENHYDRAMINE CITRATE	38 mg

Inactive Ingredients

Ingredient Name	Strength
CALCIUM STEARATE (UNII: 776XM7047L)	
CARNAUBA WAX (UNII: R12CBM0EIZ)	
SILICON DIOXIDE (UNII: ETJ7Z6XBU4)	
STARCH, CORN (UNII: O8232NY3SJ)	
CROSCARMELOSE SODIUM (UNII: M28OL1HH48)	
FD&C BLUE NO. 2 (UNII: L06K8R7DQK)	
ALUMINUM OXIDE (UNII: LM126O6933)	
GLYCERYL DIBEHENATE (UNII: R8WTH25YS2)	

HYPROMELLOSE, UNSPECIFIED (UNII: 3NXW29V3WO)	
LACTOSE MONOHYDRATE (UNII: EWQ57Q8I5X)	
MICROCRYSTALLINE CELLULOSE (UNII: OP1R32D61U)	
POLYDEXTROSE (UNII: VH2XOU12IE)	
POLYETHYLENE GLYCOL, UNSPECIFIED (UNII: 3WJQ0SDW1A)	
SODIUM LAURYL SULFATE (UNII: 368GB5141J)	
STEARIC ACID (UNII: 4ELV7Z65AP)	
TITANIUM DIOXIDE (UNII: 15FIX9V2JP)	

Product Characteristics

Color	blue	Score	no score
Shape	OVAL (Capsule-Shaped, Smooth in texture w/ polish surface)	Size	15mm
Flavor		Imprint Code	Advil;PM
Contains			

Packaging

#	Item Code	Package Description	Marketing Start Date	Marketing End Date
1	NDC:66715-9633-3	30 in 1 BOX, UNIT-DOSE	04/19/2022	
1		2 in 1 POUCH; Type 0: Not a Combination Product		

Marketing Information

Marketing Category	Application Number or Monograph Citation	Marketing Start Date	Marketing End Date
NDA	NDA021394	04/19/2022	

ADVIL PM

ibuprofen and diphenhydramine citrate tablet, coated

Product Information

Product Type	HUMAN OTC DRUG	Item Code (Source)	NDC:66715-9733
Route of Administration	ORAL		

Active Ingredient/Active Moiety

Ingredient Name	Basis of Strength	Strength
IBUPROFEN (UNII: WK2XYI10QM) (IBUPROFEN - UNII:WK2XYI10QM)	IBUPROFEN	200 mg
DIPHENHYDRAMINE CITRATE (UNII: 4OD433S209) (DIPHENHYDRAMINE - UNII:8GTS82S83M)	DIPHENHYDRAMINE CITRATE	38 mg

Inactive Ingredients

Ingredient Name	Strength
CALCIUM STEARATE (UNII: 776XM7047L)	
CARNAUBA WAX (UNII: R12CBM0EIZ)	
SILICON DIOXIDE (UNII: ETJ7Z6XBU4)	
STARCH, CORN (UNII: O8232NY3SJ)	
CROSCARMELLOSE SODIUM (UNII: M28OL1HH48)	
FD&C BLUE NO. 2 (UNII: L06K8R7DQK)	
ALUMINUM OXIDE (UNII: LMI26O6933)	
GLYCERYL DIBEHENATE (UNII: R8WTH25YS2)	
HYPROMELLOSE, UNSPECIFIED (UNII: 3NXW29V3WO)	
LACTOSE MONOHYDRATE (UNII: EWQ57Q8I5X)	
MICROCRYSTALLINE CELLULOSE (UNII: OP1R32D61U)	
POLYDEXTROSE (UNII: VH2XOU12IE)	
POLYETHYLENE GLYCOL, UNSPECIFIED (UNII: 3WJQ0SDW1A)	
SODIUM LAURYL SULFATE (UNII: 368GB5141J)	
STEARIC ACID (UNII: 4ELV7Z65AP)	
TITANIUM DIOXIDE (UNII: 15FIX9V2JP)	

Product Characteristics

Color	blue	Score	no score
Shape	OVAL (Capsule-Shaped, Smooth in texture w/ polish surface)	Size	15mm
Flavor		Imprint Code	Advil;PM
Contains			

Packaging

#	Item Code	Package Description	Marketing Start Date	Marketing End Date
1	NDC:66715-9733-2	2 in 1 CARTON	05/11/2010	
1		2 in 1 POUCH; Type 0: Not a Combination Product		
2	NDC:66715-9733-8	5 in 1 CARTON	05/11/2010	11/25/2018
2		2 in 1 POUCH; Type 0: Not a Combination Product		
3	NDC:66715-9733-3	3 in 1 CARTON	02/14/2018	
3		2 in 1 POUCH; Type 0: Not a Combination Product		

Marketing Information

Marketing Category	Application Number or Monograph Citation	Marketing Start Date	Marketing End Date
NDA	NDA021394	05/11/2010	

ADVIL PM, TRAVEL BASIX

ibuprofen and diphenhydramine citrate tablet, coated

Product Information

Product Type	HUMAN OTC DRUG	Item Code (Source)	NDC:66715-6433
Route of Administration	ORAL		

Active Ingredient/Active Moiety

Ingredient Name	Basis of Strength	Strength
IBUPROFEN (UNII: WK2XYI10QM) (IBUPROFEN - UNII:WK2XYI10QM)	IBUPROFEN	200 mg
DIPHENHYDRAMINE CITRATE (UNII: 4OD433S209) (DIPHENHYDRAMINE - UNII:8GTS82S83M)	DIPHENHYDRAMINE CITRATE	38 mg

Inactive Ingredients

Ingredient Name	Strength
CARNAUBA WAX (UNII: R12CBM0EIZ)	
SILICON DIOXIDE (UNII: ETJ7Z6XBU4)	
STARCH, CORN (UNII: O8232NY3SJ)	
CROSCARMELLOSE SODIUM (UNII: M28OL1HH48)	
FD&C BLUE NO. 2 (UNII: L06K8R7DQK)	
ALUMINUM OXIDE (UNII: LMI26O6933)	
GLYCERYL DIBEHENATE (UNII: R8WTH25YS2)	
HYPROMELLOSE, UNSPECIFIED (UNII: 3NXW29V3WO)	
LACTOSE MONOHYDRATE (UNII: EWQ57Q8I5X)	
MICROCRYSTALLINE CELLULOSE (UNII: OP1R32D61U)	
CALCIUM STEARATE (UNII: 776XM7047L)	
POLYDEXTROSE (UNII: VH2XOU12IE)	
POLYETHYLENE GLYCOL, UNSPECIFIED (UNII: 3WJQ0SDW1A)	
SODIUM LAURYL SULFATE (UNII: 368GB5141J)	
STEARIC ACID (UNII: 4ELV7Z65AP)	
TITANIUM DIOXIDE (UNII: 15FIX9V2JP)	

Product Characteristics

Color	blue	Score	no score
Shape	OVAL (Capsule-Shaped, Smooth in texture w/ polish surface)	Size	15mm
Flavor		Imprint Code	Advil;PM
Contains			

Packaging

#	Item Code	Package Description	Marketing Start Date	Marketing End Date
1	NDC:66715-6433-2	2 in 1 CARTON	11/15/2022	
1		2 in 1 POUCH; Type 0: Not a Combination Product		

Marketing Information

Marketing Category	Application Number or Monograph Citation	Marketing Start Date	Marketing End Date
NDA	NDA021394	11/15/2022	

ADVIL PM, CVP HEALTH

ibuprofen and diphenhydramine citrate tablet, coated

Product Information

Product Type	HUMAN OTC DRUG	Item Code (Source)	NDC:66715-6533
Route of Administration	ORAL		

Active Ingredient/Active Moiety

Ingredient Name	Basis of Strength	Strength
IBUPROFEN (UNII: WK2XYI10QM) (IBUPROFEN - UNII:WK2XYI10QM)	IBUPROFEN	200 mg
DIPHENHYDRAMINE CITRATE (UNII: 4OD433S209) (DIPHENHYDRAMINE - UNII:8GTS82S83M)	DIPHENHYDRAMINE CITRATE	38 mg

Inactive Ingredients

Ingredient Name	Strength
SILICON DIOXIDE (UNII: ETJ7Z6XBU4)	
STARCH, CORN (UNII: O8232NY3SJ)	
CROSCARMELOSE SODIUM (UNII: M28OL1HH48)	
FD&C BLUE NO. 2 (UNII: L06K8R7DQK)	
ALUMINUM OXIDE (UNII: LMI26O6933)	
GLYCERYL DIBEHENATE (UNII: R8WTH25YS2)	
HYPROMELLOSE, UNSPECIFIED (UNII: 3NXW29V3WO)	
LACTOSE MONOHYDRATE (UNII: EWQ57Q8I5X)	
MICROCRYSTALLINE CELLULOSE (UNII: OP1R32D61U)	
CALCIUM STEARATE (UNII: 776XM7047L)	
POLYDEXTROSE (UNII: VH2XOU12IE)	
POLYETHYLENE GLYCOL, UNSPECIFIED (UNII: 3WJQ0SDW1A)	
CARNAUBA WAX (UNII: R12CBM0EIZ)	
SODIUM LAURYL SULFATE (UNII: 368GB5141J)	
STEARIC ACID (UNII: 4ELV7Z65AP)	
TITANIUM DIOXIDE (UNII: 15FIX9V2JP)	

Product Characteristics

Color	blue	Score	no score
Shape	OVAL (Capsule-Shaped, Smooth in texture w/ polish surface)	Size	15mm
Flavor		Imprint Code	Advil;PM
Contains			

Packaging

#	Item Code	Package Description	Marketing Start Date	Marketing End Date
1	NDC:66715-6533-2	2 in 1 CARTON	05/06/2022	
1		2 in 1 POUCH; Type 0: Not a Combination Product		

Marketing Information

Marketing Category	Application Number or Monograph Citation	Marketing Start Date	Marketing End Date
NDA	NDA021394	05/06/2022	

Labeler - Lil' Drug Store Products, Inc. (093103646)

Revised: 11/2024

Lil' Drug Store Products, Inc.