

**THERA WISE NATURAL ACNE- salicylic acid ointment**  
**Derma Wise Skin Care Ltd.**

*Disclaimer: Most OTC drugs are not reviewed and approved by FDA, however they may be marketed if they comply with applicable regulations and policies. FDA has not evaluated whether this product complies.*

-----  
**Théra Wise® Natural Acne**

**Drug Facts**

**Active ingredient**

Salicylic Acid 0.5%

**Purpose**

Astringent/Anti-inflammatory

**Use**

Helps treat acne pimples and allows skin to heal

**Warnings**

For external use only.

**When using this product**

- Skin irritation and dryness is more likely to occur if you use another topical acne medication at the same time. If irritation occurs, only use one topical acne medication at a time.
- Because excessive drying of the skin may occur, start with one application daily, then gradually increase to two or three times daily if needed or as directed by a doctor.
- If bothersome dryness or peeling occurs, reduce application to once a day or every other day.

**Keep out of reach of children**

**Directions**

- See warnings under "When using this product".
- Cleanse skin thoroughly before applying the product.
- Apply product to affected areas one to three times daily or as directed by a health care practitioner.

**Other information**

Store at 2°- 25° C (35°- 77° F)

### **Inactive ingredients**

Aloe Leaf Extract<sup>1</sup>, Alpha Glucan Oligosaccharide, Alpha Lipoic Acid, Cetearyl Olivatate, Dehydroacetic Acid, Denatured Alcohol, Marine Algae Extract, Oat Beta-Glucan, Olive Squalane Peppermint Oil<sup>1</sup>, Rose Hip Seed Oil<sup>1</sup>, Sclerotium Gum, Sodium Anisate, Sodium Levulinate, Sorbitan Olivatate, Tamanu Oil<sup>1</sup>, Tapioca Starch<sup>1</sup>, Tea Tree Oil, Tocopherols, Water, Witch Hazel Extract.

---

**1 Certified Organic**

### **Questions or Comments?**

Call weekdays 9am to 5pm PST @ 1.888.488.1808

### **PRINCIPAL DISPLAY PANEL - 28 g Tube Box**

**THÉRA WISE®**

#### **Natural Acne Treatment**

SALICYLIC ACID, 0.5 %

Clears acne blemishes without over drying

Prevents new acne from forming

WITH TAMANU OIL, OAT PREBIOTICS, ALOE VERA  
LEAF EXTRACT, ROSEHIP SEED OIL, WILLOW  
& WITCH HAZEL BARK EXTRACTS

NET WT 1OZ (28g)



BIO-ACTIVE NATURALS

**A WISE CHOICE FOR SENSITIVE SKIN**

Clears up acne blemishes and allows skin to heal naturally

99% Plant-derived therapeutic ointment

**NO**  
 PETROCHEMICALS,  
 PARABENS, BHT,  
 T.E.A. M.E.A, UREA,  
 GLYCOLS,  
 PEG's



**Natural Acne Treatment**

SALICYLIC ACID, 0.5 %

Clears acne blemishes without over drying  
 Prevents new acne from forming

WITH TAMANU OIL, OAT PREBIOTICS, ALOE VERA  
 LEAF EXTRACT, ROSEHIP SEED OIL, WILLOW  
 & WITCH HAZEL BARK EXTRACTS

NET WT 1 OZ (28g)

Questions or Comments? 1.888.488.1808  
 Call weekdays 9am to 5pm PST  
**Derma Wise Skin Care Ltd.**  
 214-3381 Cambie Street, Vancouver BC Canada  
 or visit us online at: <http://www.therawise.com>

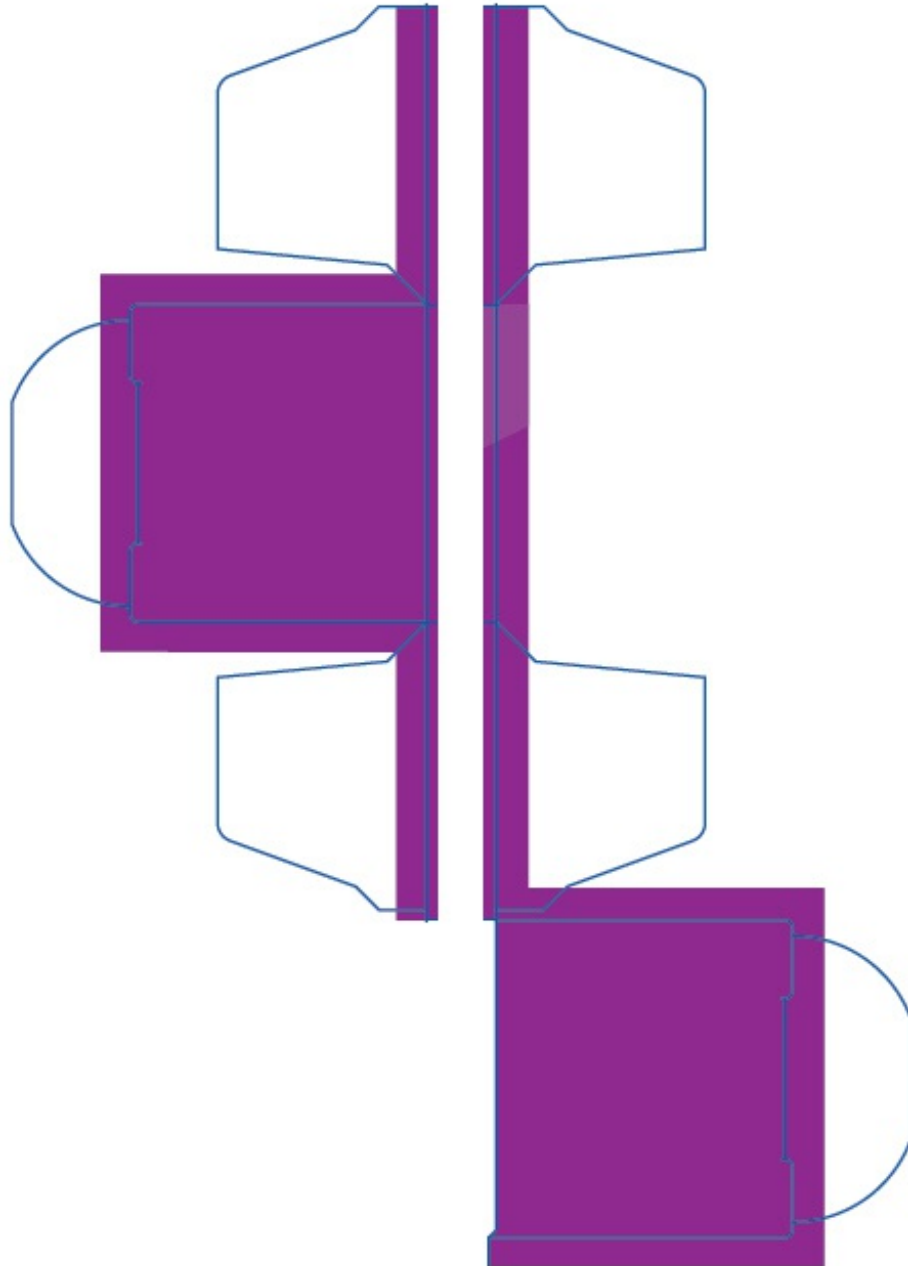


Thera Wise® is a registered TM of Derma Wise® Skin Care Ltd.

<p><b>Drug Facts (continued)</b></p> <p><b>Directions:</b> See warnings under "When using this product".</p> <ul style="list-style-type: none"> <li>■ Cleanse skin thoroughly before applying the product.</li> <li>■ Apply product to affected areas one to three times daily or as directed by a health care practitioner.</li> </ul> <p><b>Other information</b> Score at 2° - 25° C (35° - 77° F)</p> <p><b>Inactive ingredients</b> Aloe Leaf Extract*, Alpha Glucan Oligosaccharide, Alpha Lipic Acid, Cetearyl Olivare, Dihydroacetone Acid, Denatured Alcohol, Marine Algae Extract, Oat Beta-Glucan, Olive Squalane Peppermint Oil*, Rose Hip Seed Oil*, Sclerotium Gum, Sodium Anisate, Sodium Levulinate, Sorbitan Olivare, Tamanu Oil*, Tapioca Starch*, Tea Tree Oil, Tocopherols, Water, Witch Hazel Extract</p> <p>Questions or comments? Call weekdays 9am to 5pm PST @ 1.888.488.1808</p>	<p><b>Drug Facts</b></p> <p><b>Active ingredient</b> Salicylic Acid 0.5%</p> <p><b>Purpose</b> Astringent/Anti-inflammatory</p> <p><b>Use</b> Helps treat acne pimples and allows skin to heal</p> <p><b>Warnings</b> For external use only.</p> <p><b>When using this product:</b> Skin irritation and dryness is more likely to occur if you use another topical acne medication at the same time. If irritation occurs, only use one topical acne medication at a time. ■ Because excessive drying of the skin may occur, start with one application daily then gradually increase to two or three times daily if needed or as directed by a doctor. ■ If bothersome dryness or peeling occurs, reduce application to once a day or every other day.</p> <p><b>Keep out of reach of children</b></p>
--	---

\*Certified Organic





## THERA WISE NATURAL ACNE

salicylic acid ointment

### Product Information

<b>Product Type</b>	HUMAN OTC DRUG	<b>Item Code (Source)</b>	NDC:43347-189
<b>Route of Administration</b>	TOPICAL		

### Active Ingredient/Active Moiety

Ingredient Name	Basis of Strength	Strength
<b>Salicylic Acid</b> (UNII: O414PZ4LPZ) (Salicylic Acid - UNII:O414PZ4LPZ)	Salicylic Acid	0.14 g in 28 g

### Inactive Ingredients

Ingredient Name	Strength
<b>Aloe Vera Leaf</b> (UNII: ZY81Z83H0X)	
<b>.Alpha.-Glucan Oligosaccharide</b> (UNII: S95658MI3W)	
<b>ALPHA LIPOIC ACID</b> (UNII: 73Y7P0K73Y)	
<b>Alcohol</b> (UNII: 3K9958V90M)	
<b>Squalane</b> (UNII: GW89575KF9)	
<b>Peppermint Oil</b> (UNII: AV092KU4JH)	
<b>Rosa Moschata Oil</b> (UNII: J99W255AWF)	
<b>Betasizofiran</b> (UNII: 2X51AD1X3T)	
<b>Sodium Anisate</b> (UNII: F9WFJ28MV9)	
<b>Sodium Levulinate</b> (UNII: VK44E1MQU8)	
<b>Sorbitan Olivat</b> (UNII: MDL271E3GR)	
<b>Tamanu Oil</b> (UNII: JT3LVK84A1)	
<b>Starch, Tapioca</b> (UNII: 24SC3U704I)	
<b>Tea Tree Oil</b> (UNII: VIF565UC2G)	
<b>Tocopherol</b> (UNII: R0ZB2556P8)	
<b>Water</b> (UNII: 059QF0KO0R)	
<b>Hamamelis Virginiana Top</b> (UNII: UDA30A2JJY)	
<b>Nori</b> (UNII: 477TV3P5UX)	

### Product Characteristics

<b>Color</b>	WHITE	<b>Score</b>	
<b>Shape</b>		<b>Size</b>	
<b>Flavor</b>		<b>Imprint Code</b>	
<b>Contains</b>			

### Packaging

#	Item Code	Package Description	Marketing Start Date	Marketing End Date
1	NDC:43347-189-01	1 in 1 BOX	08/15/2016	
1		28 g in 1 TUBE; Type 0: Not a Combination Product		

### Marketing Information

Marketing Category	Application Number or Monograph Citation	Marketing Start Date	Marketing End Date
OTC MONOGRAPH FINAL	part333D	08/15/2016	

Revised: 1/2022

Derma Wise Skin Care Ltd.