

**B06 STRESS RESISTANCE- avena sativa, chamomilla, cherry plum, clematis vitalba, coffea cruda, english oak, eschscholtzia californica, european hornbeam, ficus carica, humulus lupulus, ignatia amara, impatiens glandulifera, kali phosphoricum, kali silicatum, melissa officinalis, passiflora incarnata, phosphoricum acidum, pyrenees star of bethlehem, rockrose, sus scrofa parasymphathetic nerve, pineal gland, symphathetic nerve, valeriana officinalis, verbena officinalis, zincum valerianicum solution/ drops  
Apex Energetics Inc.**

*Disclaimer: This homeopathic product has not been evaluated by the Food and Drug Administration for safety or efficacy. FDA is not aware of scientific evidence to support homeopathy as effective.*

-----

## **B06**

<b>Active Ingredients</b>	
Avena Sativa	1X
Chamomilla	6X 12X 30X
Cherry Plum Flower	9X 12X 15X
Clematis Vitalba Flower	9X 12X 15X
Coffea Cruda	6X 12X
English Oak Flower	9X 12X 15X
Eschscholtzia Californica	2X 4X 6X
European Hornbeam Flower	9X 12X 15X
Ficus Carica Flower Bud	3X 6X 9X
Humulus Lupulus	2X 4X
Ignatia Amara	6X 9X 12X 30X
Impatiens Glandulifera Flower	9X 12X 15X
Kali Phosphoricum	6X 9X 12X 15X
Kali Silicatum	12X 15X
Melissa Officinalis	2X 4X 6X
Passiflora Incarnata	2X 4X
Phosphoricum Acidum	6X 12X 30X
Pyrenees Star Of Bethlehem Flowering Top	9X 12X 15X
Rockrose Flower	9X 12X 15X
Sus Scrofa Parasympathetic Nerve	7C
Sus Scrofa Pineal Gland	7C
Sus Scrofa Sympathetic Nerve	7C
Valeriana Officinalis	2X 4X 6X
Verbena Officinalis Flowering Top	9X 12X 15X
Zincum Valerianicum	9X 12X 15X

### **Uses:**

For temporary relief of minor:  
nervous irritability\*

headache\*

insomnia\*

muscle tension\*

exhaustion\*

neck stiffness\*

constipation\*

### **Warnings:**

**If pregnant or breastfeeding**, ask a health professional before use.

Do not use if clear seal over the cap is broken or missing.

**Keep out of reach of children.** In case of overdose, get medical help or contact a Poison Control Center right away.

**Stop use and ask a doctor if** nervous irritability, headache, insomnia, muscle tension, exhaustion, neck stiffness, constipation, or other symptoms do not improve within 7 days or are accompanied by fever.

### **Directions:**

Adults & children ages 12 years and over: Take 10 drops under the tongue 3-4 times a day, or as directed by your healthcare professional. Consult a physician for use in children under 12 years of age.

### **Inactive Ingredients**

alcohol (20% by volume), distilled water

Distributed by Apex Energetics. Questions?

16592 Hale Ave., Irvine, CA 92606, USA

FUTUREPLEX® B06

ANTITOX®

STRESS RESISTANCE™

Homeopathic Formula

Nervous Irritability\*

Headache\*

Insomnia\*

1 fl oz (30 mL)

Alcohol 20% by Volume

U1 **Drug Facts (continued)**

**Uses:** For temporary relief of minor: • nervous irritability\* • headache\* • insomnia\* • muscle tension\* • exhaustion\* • neck stiffness\* • constipation\*

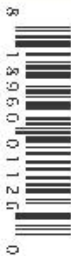
**Warnings:** If pregnant or breastfeeding, ask a health professional before use. Do not use if clear seal over the cap is broken or missing. **Keep out of reach of children.** In case of overdose, get medical help or contact a Poison Control Center right away. **Stop use and ask a doctor** if nervous irritability, headache, insomnia, muscle tension, exhaustion, neck stiffness, constipation, or other symptoms do not improve within 7 days or are accompanied by fever.

**Directions:** Adults & children ages 12 years and over: Take 10 drops under the tongue 3-4 times a day, or as directed by your healthcare professional. Consult a physician for use in children under 12 years of age.

**Inactive Ingredients** alcohol (20% by volume), distilled water

\*Claims based on traditional homeopathic practice, not accepted medical evidence. Not FDA evaluated. Distributed by Apex Energetics. Questions? 16592 Hale Ave., Irvine, CA 92606, USA

© 2021 Apex Energetics.



**FUTUREPLEX<sup>®</sup> B06  
ANTITOX<sup>™</sup>**



**STRESS  
RESISTANCE<sup>™</sup>**

Homeopathic Formula

Nervous Irritability\*  
Headache\* • Insomnia\*

1 fl oz (30 mL)

Alcohol 20% by Volume

**Drug Facts**

B0621-0202

**Active Ingredients**

Avena Sativa	1X	Kali Silicatum	12X 15X
Chamomilla	6X 12X 30X	Melissa Officinalis	2X 4X 6X
Cherry Plum Flower	9X 12X 15X	Passiflora Incarnata	2X 4X
		Phosphoricum Acidum	
Clematis Vitalba Flower			6X 12X 30X
	9X 12X 15X	Pyrenees Star of Bethlehem	
Coffea Cruda	6X 12X	Flowering Top	
English Oak Flower			9X 12X 15X
	9X 12X 15X	Rockrose Flower	
Eschscholtzia Californica			9X 12X 15X
	2X 4X 6X	Sus Scrofa Parasympathetic	
European Hornbeam		Nerve	7C
Flower	9X 12X 15X	Sus Scrofa Pineal Gland	
Ficus Carica Flower Bud			7C
	3X 6X 9X	Sus Scrofa Sympathetic	
Humulus Lupulus	2X 4X	Nerve	7C
Ignatia Amara		Valeriana Officinalis	
	6X 9X 12X 30X		2X 4X 6X
Impatiens Glandulifera		Verbena Officinalis	
Flower	9X 12X 15X	Flowering Top	9X 12X 15X
Kali Phosphoricum	6X 9X 12X 15X	Zincum Valerianicum	9X 12X 15X

**B06 STRESS RESISTANCE**

avena sativa, chamomilla, cherry plum, clematis vitalba, coffea cruda, english oak, eschscholtzia californica, european hornbeam, ficus carica, humulus lupulus, ignatia amara, impatiens glandulifera, kali phosphoricum, kali silicatum, melissa officinalis, passiflora incarnata, phosphoricum acidum, pyrenees star of bethlehem, rockrose, sus scrofa parasympathetic nerve, pineal gland, sympathetic nerve, valeriana officinalis, verbena officinalis, zincum valerianicum solution/ drops

**Product Information**

<b>Product Type</b>	HUMAN OTC DRUG	<b>Item Code (Source)</b>	NDC:63479-0206
<b>Route of Administration</b>	SUBLINGUAL		

**Active Ingredient/Active Moiety**

Ingredient Name	Basis of Strength	Strength
<b>FICUS CARICA FLOWER BUD</b> (UNII: 8I2PXY292P) (FICUS CARICA FLOWER BUD - UNII:8I2PXY292P)	FICUS CARICA FLOWER BUD	9 [hp_X] in 1 mL
<b>HOPS</b> (UNII: 01G73H6H83) (HOPS - UNII:01G73H6H83)	HOPS	4 [hp_X] in 1 mL
<b>IMPATIENS GLANDULIFERA FLOWER</b> (UNII: AJU501A5ZV) (IMPATIENS GLANDULIFERA FLOWER - UNII:AJU501A5ZV)	IMPATIENS GLANDULIFERA FLOWER	15 [hp_X] in 1 mL
<b>ZINC VALERATE DIHYDRATE</b> (UNII: MN0RX54EQA) (VALERIC ACID - UNII:GZK92PJM7B)	ZINC VALERATE DIHYDRATE	15 [hp_X] in 1 mL
<b>QUERCUS ROBUR FLOWER</b> (UNII: ML644HED2V) (QUERCUS ROBUR FLOWER - UNII:ML644HED2V)	QUERCUS ROBUR FLOWER	15 [hp_X] in 1 mL
<b>PRUNUS CERASIFERA FLOWER</b> (UNII: 0KD7R09EAS) (PRUNUS CERASIFERA FLOWER - UNII:0KD7R09EAS)	PRUNUS CERASIFERA FLOWER	15 [hp_X] in 1 mL
<b>ARABICA COFFEE BEAN</b> (UNII: 3SW678MX72) (ARABICA COFFEE BEAN - UNII:3SW678MX72)	ARABICA COFFEE BEAN	12 [hp_X] in 1 mL
<b>CLEMATIS VITALBA FLOWER</b> (UNII: 7SCP4N87CI) (CLEMATIS VITALBA FLOWER - UNII:7SCP4N87CI)	CLEMATIS VITALBA FLOWER	15 [hp_X] in 1 mL
<b>DIBASIC POTASSIUM PHOSPHATE</b> (UNII: CI71S98N1Z) (POTASSIUM CATION - UNII:295O53K152)	DIBASIC POTASSIUM PHOSPHATE	15 [hp_X] in 1 mL
<b>VERBENA OFFICINALIS FLOWERING TOP</b> (UNII: 311PNK9CDZ) (VERBENA OFFICINALIS FLOWERING TOP - UNII:311PNK9CDZ)	VERBENA OFFICINALIS FLOWERING TOP	15 [hp_X] in 1 mL

<b>MELISSA OFFICINALIS</b> (UNII: YF70189L0N) (MELISSA OFFICINALIS - UNII:YF70189L0N)	MELISSA OFFICINALIS	6 [hp_X] in 1 mL
<b>MATRICARIA CHAMOMILLA</b> (UNII: G0R4UBI2ZZ) (MATRICARIA CHAMOMILLA - UNII:G0R4UBI2ZZ)	MATRICARIA CHAMOMILLA	30 [hp_X] in 1 mL
<b>AVENA SATIVA FLOWERING TOP</b> (UNII: MA9CQJ3F7F) (AVENA SATIVA FLOWERING TOP - UNII:MA9CQJ3F7F)	AVENA SATIVA FLOWERING TOP	1 [hp_X] in 1 mL
<b>STRYCHNOS IGNATII SEED</b> (UNII: 1NM3M2487K) (STRYCHNOS IGNATII SEED - UNII:1NM3M2487K)	STRYCHNOS IGNATII SEED	30 [hp_X] in 1 mL
<b>PHOSPHORIC ACID</b> (UNII: E4GA8884NN) (PHOSPHORIC ACID - UNII:E4GA8884NN)	PHOSPHORIC ACID	30 [hp_X] in 1 mL
<b>ORNITHOGALUM UMBELLATUM FLOWERING TOP</b> (UNII: CZD6M4PY4B) (ORNITHOGALUM UMBELLATUM FLOWERING TOP - UNII:CZD6M4PY4B)	ORNITHOGALUM UMBELLATUM FLOWERING TOP	15 [hp_X] in 1 mL
<b>CARPINUS BETULUS FLOWER</b> (UNII: 07YL55QKZ9) (CARPINUS BETULUS FLOWER - UNII:07YL55QKZ9)	CARPINUS BETULUS FLOWER	15 [hp_X] in 1 mL
<b>SUS SCROFA PINEAL GLAND</b> (UNII: 050QZ2EDK7) (SUS SCROFA PINEAL GLAND - UNII:050QZ2EDK7)	SUS SCROFA PINEAL GLAND	7 [hp_C] in 1 mL
<b>VALERIAN</b> (UNII: JWF5YAW3QW) (VALERIAN - UNII:JWF5YAW3QW)	VALERIAN	6 [hp_X] in 1 mL
<b>POTASSIUM SILICATE</b> (UNII: J86L1GUL6K) (POTASSIUM CATION - UNII:295O53K152)	POTASSIUM SILICATE	15 [hp_X] in 1 mL
<b>PASSIFLORA INCARNATA FLOWERING TOP</b> (UNII: CLF5YFS110) (PASSIFLORA INCARNATA FLOWERING TOP - UNII:CLF5YFS110)	PASSIFLORA INCARNATA FLOWERING TOP	4 [hp_X] in 1 mL
<b>HELIANTHEMUM NUMMULARIUM FLOWER</b> (UNII: 51BRR32WPP) (HELIANTHEMUM NUMMULARIUM FLOWER - UNII:51BRR32WPP)	HELIANTHEMUM NUMMULARIUM FLOWER	15 [hp_X] in 1 mL
<b>SUS SCROFA PARASYMPATHETIC NERVE</b> (UNII: 5AZZ2GHR69) (SUS SCROFA PARASYMPATHETIC NERVE - UNII:5AZZ2GHR69)	SUS SCROFA PARASYMPATHETIC NERVE	7 [hp_C] in 1 mL
<b>SUS SCROFA SYMPATHETIC NERVE</b> (UNII: H6L0IFR3FE) (SUS SCROFA SYMPATHETIC NERVE - UNII:H6L0IFR3FE)	SUS SCROFA SYMPATHETIC NERVE	7 [hp_C] in 1 mL
<b>ESCHSCHOLZIA CALIFORNICA</b> (UNII: 9315HN272X) (ESCHSCHOLZIA CALIFORNICA - UNII:9315HN272X)	ESCHSCHOLZIA CALIFORNICA	6 [hp_X] in 1 mL

## Inactive Ingredients

Ingredient Name	Strength
<b>ALCOHOL</b> (UNII: 3K9958V90M)	
<b>WATER</b> (UNII: 059QF0KO0R)	

## Packaging

#	Item Code	Package Description	Marketing Start Date	Marketing End Date
1	NDC:63479-0206-1	30 mL in 1 BOTTLE, GLASS; Type 0: Not a Combination Product	08/15/1988	

## Marketing Information

Marketing Category	Application Number or Monograph Citation	Marketing Start Date	Marketing End Date
unapproved homeopathic		08/15/1988	

**Labeler** - Apex Energetics Inc. (195816384)

