

**TELISOTUZUMAB VEDOTIN- telisotuzumab vedotin injection, powder, lyophilized, for solution**  
**AbbVie Inc.**

-----

**HIGHLIGHTS OF PRESCRIBING INFORMATION**

**These highlights do not include all the information needed to use EMRELIS safely and effectively. See full prescribing information for EMRELIS.**

**EMRELIS™ (telisotuzumab vedotin-tllv) for injection, for intravenous use**  
**Initial U.S. Approval: 2025**

-----  
**INDICATIONS AND USAGE**

EMRELIS is a c-Met-directed antibody and microtubule inhibitor conjugate indicated for the treatment of adult patients with locally advanced or metastatic non-squamous non-small cell lung cancer (NSCLC) with high c-Met protein overexpression [ $\geq 50\%$  of tumor cells with strong (3+) staining], as determined by an FDA-approved test, who have received a prior systemic therapy. (1)

This indication is approved under accelerated approval based on overall response rate (ORR) and duration of response (DOR). Continued approval for this indication may be contingent upon verification and description of clinical benefit in a confirmatory trial(s). (1)

-----  
**DOSAGE AND ADMINISTRATION**

*For intravenous infusion only.* (2.5)

- The recommended dosage of EMRELIS is 1.9 mg/kg administered intravenously every 2 weeks until disease progression or unacceptable toxicity. (2.2)
- Reconstitute and further dilute EMRELIS prior to intravenous infusion. (2.5)

-----  
**DOSAGE FORMS AND STRENGTHS**

For injection: 20 mg or 100 mg of telisotuzumab vedotin-tllv as a lyophilized powder in a single-dose vial. (3)

-----  
**CONTRAINDICATIONS**

None. (4)

-----  
**WARNINGS AND PRECAUTIONS**

- Peripheral Neuropathy: Monitor patients for new or worsening peripheral neuropathy. Withhold, reduce the dose, or permanently discontinue EMRELIS based on the severity. (5.1)
- Interstitial Lung Disease (ILD)/Pneumonitis: Severe, life-threatening or fatal ILD/pneumonitis may occur. Withhold or permanently discontinue EMRELIS based on the severity. (5.2)
- Ocular Surface Disorders: Monitor patients for signs or symptoms of ocular surface disorders, including vision changes. Withhold or permanently discontinue EMRELIS based on the severity. (5.3)
- Infusion-Related Reactions (IRR): Monitor patients for IRR. Withhold, reduce the rate of infusion, or permanently discontinue EMRELIS based on the severity. For patients who experience IRR, administer premedications prior to subsequent infusions. (5.4)
- Embryo-Fetal Toxicity: Can cause fetal harm. Advise patients about the potential risk to a fetus and to use effective contraception. (5.5)

-----  
**ADVERSE REACTIONS**

The most common adverse reactions ( $\geq 20\%$ ) were peripheral neuropathy, fatigue, decreased appetite, and peripheral edema. (6.1)

The most common Grade 3 or 4 laboratory abnormalities ( $\geq 2\%$ ) were decreased lymphocytes, increased glucose, increased alanine aminotransferase, increased gamma glutamyl transferase, decreased phosphorus, decreased sodium, decreased hemoglobin and decreased calcium. (6.1)

**To report SUSPECTED ADVERSE REACTIONS, contact AbbVie Inc. at 1-800-633-9110 or FDA at 1-800-FDA-1088 or [www.fda.gov/medwatch](http://www.fda.gov/medwatch).**

-----  
**DRUG INTERACTIONS**

Strong CYP3A Inhibitors: concomitant use with EMRELIS may increase the AUC of MMAE. Monitor for increased risk of adverse reactions to EMRELIS. (7.1)

-----  
**USE IN SPECIFIC POPULATIONS**

- Severe or Moderate Hepatic Impairment: Avoid use of EMRELIS. (8.6)

- Lactation: Advise not to breastfeed. (8.2)
- Infertility: May impair fertility. (8.3)

See 17 for PATIENT COUNSELING INFORMATION and Medication Guide.

Revised: 5/2025

---

## **FULL PRESCRIBING INFORMATION: CONTENTS\***

### **1 INDICATIONS AND USAGE**

### **2 DOSAGE AND ADMINISTRATION**

#### **2.1 Patient Selection**

#### **2.2 Recommended Dosage**

#### **2.3 Dosage Modifications for Adverse Reactions**

#### **2.4 Recommended Premedications for Patients Who Experience Infusion-Related Reactions**

#### **2.5 Preparation and Administration**

### **3 DOSAGE FORMS AND STRENGTHS**

### **4 CONTRAINDICATIONS**

### **5 WARNINGS AND PRECAUTIONS**

#### **5.1 Peripheral Neuropathy**

#### **5.2 Interstitial Lung Disease/Pneumonitis**

#### **5.3 Ocular Surface Disorders**

#### **5.4 Infusion-Related Reactions**

#### **5.5 Embryo-Fetal Toxicity**

### **6 ADVERSE REACTIONS**

#### **6.1 Clinical Trials Experience**

### **7 DRUG INTERACTIONS**

#### **7.1 Effect of Other Drugs on EMRELIS**

### **8 USE IN SPECIFIC POPULATIONS**

#### **8.1 Pregnancy**

#### **8.2 Lactation**

#### **8.3 Females and Males of Reproductive Potential**

#### **8.4 Pediatric Use**

#### **8.5 Geriatric Use**

#### **8.6 Hepatic Impairment**

### **11 DESCRIPTION**

### **12 CLINICAL PHARMACOLOGY**

#### **12.1 Mechanism of Action**

#### **12.2 Pharmacodynamics**

#### **12.3 Pharmacokinetics**

#### **12.6 Immunogenicity**

### **13 NONCLINICAL TOXICOLOGY**

#### **13.1 Carcinogenesis, Mutagenesis, Impairment of Fertility**

### **14 CLINICAL STUDIES**

### **15 REFERENCES**

### **16 HOW SUPPLIED/STORAGE AND HANDLING**

### **17 PATIENT COUNSELING INFORMATION**

\* Sections or subsections omitted from the full prescribing information are not listed.

---

## FULL PRESCRIBING INFORMATION

### 1 INDICATIONS AND USAGE

EMRELIS is indicated for the treatment of adult patients with locally advanced or metastatic, non-squamous non-small cell lung cancer (NSCLC) with high c-Met protein overexpression [ $\geq 50\%$  of tumor cells with strong (3+) staining], as determined by an FDA-approved test [see *Dosage and Administration* (2.1)], who have received a prior systemic therapy.

This indication is approved under accelerated approval based on overall response rate (ORR) and duration of response (DOR) [see *Clinical Studies* (14)]. Continued approval for this indication may be contingent upon verification and description of clinical benefit in a confirmatory trial(s).

### 2 DOSAGE AND ADMINISTRATION

#### 2.1 Patient Selection

Select patients for treatment with EMRELIS based on the presence of high c-Met protein overexpression [ $\geq 50\%$  of tumor cells with strong (3+) staining] in patients with non-squamous NSCLC [see *Indications and Usage* (1) and *Clinical Studies* (14)].

Information on FDA-approved tests for the detection of high c-Met protein overexpression is available at: <http://www.fda.gov/CompanionDiagnostics>.

#### 2.2 Recommended Dosage

The recommended dosage of EMRELIS is 1.9 mg/kg (up to a maximum of 190 mg for patients greater than or equal to 100 kg) administered as an intravenous infusion over 30 minutes every 2 weeks until disease progression or unacceptable toxicity.

#### 2.3 Dosage Modifications for Adverse Reactions

The recommended dose reductions for adverse reactions are provided in Table 1.

**Table 1. Recommended Dose Reductions**

Dose Reduction	Recommended Dosage
First	1.6 mg/kg every 2 weeks
Second	1.3 mg/kg every 2 weeks
Third	1 mg/kg every 2 weeks
Permanently discontinue EMRELIS in patients who are unable to tolerate 1 mg/kg.	

The recommended dosage modifications of EMRELIS for adverse reactions are provided in Table 2.

**Table 2. EMRELIS Dosage Modifications and Management for Adverse Reactions**

<b>Adverse Reaction</b>	<b>Severity<sup>a</sup></b>	<b>Dosage Modification</b>
Peripheral Neuropathy <i>[see Warnings and Precautions (5.1)]</i>	Grade 2 or 3	<ul style="list-style-type: none"> <li>Withhold EMRELIS until recovery to Grade <math>\leq 1</math>.</li> <li>Resume EMRELIS at the next lower dose level.</li> </ul>
	Grade 4	Permanently discontinue EMRELIS.
Interstitial Lung Disease (ILD)/Pneumonitis <i>[see Warnings and Precautions (5.2)]</i>	Grade 1	<ul style="list-style-type: none"> <li>Withhold EMRELIS and consider corticosteroids as soon as ILD/pneumonitis is suspected.</li> <li>Resume EMRELIS upon radiographic resolution.</li> </ul>
	Grade $\geq 2$	Permanently discontinue EMRELIS.
Keratitis <i>[see Warnings and Precautions (5.3)]</i>	Grade 2	<ul style="list-style-type: none"> <li>Withhold EMRELIS.</li> <li>Refer patients to an eye care professional for an ophthalmic examination and treatment (e.g., lubricating and/or steroidal eye drops).</li> <li>Resume EMRELIS at the same dose at the discretion of the healthcare provider.</li> </ul>
	Grade 3 or 4	<ul style="list-style-type: none"> <li>Refer patients to an eye care professional for an ophthalmic examination and treatment (e.g., lubricating and/or steroidal eye drops).</li> <li>Permanently discontinue EMRELIS.</li> </ul>
Infusion-Related Reactions (IRR) <i>[see Warnings and Precautions (5.4)]</i>	Grade 1-3	<ul style="list-style-type: none"> <li>Interrupt EMRELIS infusion and administer supportive treatment.</li> <li>Resume the infusion at a 50% rate reduction. Increase infusion rate as tolerated for subsequent doses.</li> <li>For patients who experience an IRR, administer premedications prior to all future doses (<i>see Table 3</i>).</li> </ul>
		<ul style="list-style-type: none"> <li>Permanently discontinue EMRELIS.</li> </ul>

	Grade 4	<ul style="list-style-type: none"> <li>Administer supportive treatment.</li> </ul>
Peripheral Edema [see Adverse Reactions (6.1)]	Grade ≥2	<u>First occurrence</u> <ul style="list-style-type: none"> <li>Withhold EMRELIS until recovery to Grade ≤1.</li> <li>Resume EMRELIS at the same dose level.</li> </ul> <u>Subsequent occurrence</u> <ul style="list-style-type: none"> <li>Withhold EMRELIS until recovery to Grade ≤1.</li> <li>Resume EMRELIS at the next lower dose level.</li> </ul>
Other Adverse Reactions [see Adverse Reactions (6.1)]	Grade 3	<u>First occurrence</u> <ul style="list-style-type: none"> <li>Withhold EMRELIS until recovery to Grade ≤1.</li> <li>Resume EMRELIS at the same dose.</li> </ul> <u>Subsequent occurrence</u> <ul style="list-style-type: none"> <li>Withhold EMRELIS until recovery to Grade ≤1.</li> <li>Resume EMRELIS at the next lower dose level.</li> </ul>
	Grade 4	<ul style="list-style-type: none"> <li>Permanently discontinue EMRELIS.</li> </ul>
<sup>a</sup> Adverse reactions were graded using National Cancer Institute Common Terminology Criteria for Adverse Events (NCI CTCAE) version 4.03		

## 2.4 Recommended Premedications for Patients Who Experience Infusion-Related Reactions

Table 3 contains the recommended premedications for patients who experience infusion-related reactions to EMRELIS, for subsequent infusions.

**Table 3: Recommended Premedications for Patients Who Experience Infusion-Related Reactions**

Medication Class	Examples or equivalent	Dose	Route of Administration	Dosing Window Prior to EMRELIS Administration
H1 Antihistamine	Diphenhydramine	25 to 50 mg	Intravenously or orally	Administer 30-60 minutes prior to each infusion
H2 Antihistamine	Famotidine	20 mg	Intravenously or orally	Administer 30-60 minutes prior to

Antipyretic	Acetaminophen	650 to 1,000 mg	Orally or Intravenously	each infusion
Glucocorticoid	Methylprednisolone	125 mg or equivalent	Intravenously	Administer 30-60 minutes prior to each infusion

## 2.5 Preparation and Administration

EMRELIS contains a hazardous component. Follow applicable special handling and disposal procedures in accordance with local requirements.<sup>1</sup>

Reconstitute and further dilute EMRELIS prior to intravenous infusion.

### Reconstitution of Lyophilized EMRELIS

Before reconstitution, allow the vial to reach room temperature after removal of the vial from storage condition.

- Calculate the recommended dose based on the patient's weight to determine the number of vials needed. For patients weighing greater than or equal to 100 kg, use 190 mg dose [see *Dosage and Administration (2.2)*]. More than one vial may be needed to achieve the calculated dose.
- Using a sterile syringe, slowly inject Sterile Water for Injection, using the volume provided in Table 4, into the EMRELIS vial containing the lyophilized powder, which has a whole or fragmented cake-like appearance. The reconstituted solution has a concentration of 20 mg/mL EMRELIS.

**Table 4. Reconstitution Volumes**

<b>Dose Vial</b>	<b>Volume of Sterile Water for Injection required for reconstitution</b>
20 mg vial	1.1 mL
100 mg vial	5.2 mL

- Swirl the vial gently until completely dissolved. Do not shake.
- Inspect the reconstituted solution for particulate matter and discoloration. The solution should appear clear to slightly opalescent and colorless to slightly yellow. Discard the vial if the reconstituted solution is discolored, is cloudy, or contains visible particulates.
- Use reconstituted EMRELIS immediately. If not used immediately, store the reconstituted EMRELIS vials in a refrigerator at 2°C to 8°C (36°F to 46°F) for up to 24 hours from the time of reconstitution. Do not freeze.
- Each vial of EMRELIS is intended for one-time use only. Discard any unused drug remaining in the vial.

### Dilution in Infusion Bag

- Calculate the required dose volume (mL) of reconstituted EMRELIS solution based on the prescribed dose.

- Withdraw the calculated dose volume (mL) of reconstituted solution from the EMRELIS vial using a sterile syringe. Discard any unused portion remaining in the vial(s).
- Inject the calculated amount of reconstituted solution into 0.9% Sodium Chloride Injection infusion bag so that the final EMRELIS concentration is between 1 mg/mL and 10 mg/mL. Use only 0.9% Sodium Chloride Injection.
- Gently invert the infusion bag to thoroughly mix the solution. Do not shake.
- After preparing the dose for infusion, visually inspect the bag content for particulates and discard if present.
- If not used immediately, the diluted solution can be stored in a refrigerator at 2°C to 8°C (36°F to 46°F) for up to 24 hours and an additional 4 hours at room temperature at 9°C to 30°C (48°F to 86°F) until the end of administration. Do not freeze.

### Method of Administration

If the prepared infusion solution was stored refrigerated at 2°C to 8°C (36°F to 46°F), allow the solution to reach room temperature prior to administration.

- Administer by intravenous infusion over 30 minutes using a dedicated infusion line with a 0.20 or 0.22 micron in-line filter made of polyether sulfone (PES), polyvinylidene fluoride (PVDF), or Polyamide (PA).
- Do not mix EMRELIS with other drugs or administer other drugs through the same intravenous line.

## **3 DOSAGE FORMS AND STRENGTHS**

For injection: 20 mg or 100 mg of telisotuzumab vedotin-ttlv as a white to off-white, lyophilized powder in a single-dose vial for reconstitution and further dilution.

## **4 CONTRAINDICATIONS**

None.

## **5 WARNINGS AND PRECAUTIONS**

### **5.1 Peripheral Neuropathy**

EMRELIS can cause peripheral neuropathy, including peripheral sensory neuropathy and peripheral motor neuropathy.

In the safety population [see *Adverse Reactions (6.1)*], peripheral neuropathy occurred in 51% of patients treated with EMRELIS, including Grade 3 in 11%. These adverse reactions included peripheral sensory neuropathy in 45% of patients and peripheral motor neuropathy in 9%. The median time to onset of peripheral neuropathy was 105 days (range: 1 to 472 days). Peripheral neuropathy led to permanent discontinuation of EMRELIS in 13% of patients. The median time to onset of peripheral neuropathy leading to treatment discontinuation was 249 days (range: 57 to 519 days). Of the 7 patients with motor neuropathy ongoing as of their last dose of EMRELIS, 6 had persistent Grade 1 or 2 symptoms 30 days after their last dose.

Monitor patients for signs and symptoms of new or worsening peripheral neuropathy such as hypoesthesia, hyperesthesia, paresthesia, a burning sensation, neuropathic pain, or muscle weakness. Withhold, reduce the dose or permanently discontinue EMRELIS based on severity [see *Dosage and Administration* (2.3)].

## **5.2 Interstitial Lung Disease/Pneumonitis**

EMRELIS can cause severe, life-threatening, or fatal interstitial lung disease (ILD)/pneumonitis.

In the safety population [see *Adverse Reactions* (6.1)], ILD/pneumonitis occurred in 10% of patients treated with EMRELIS, including Grade 3 in 3% and Grade 4 in 0.6%. There were 3 fatal cases of ILD/pneumonitis in patients who received EMRELIS. The median time to onset of ILD/pneumonitis was 48 days (range: 23 to 85 days). ILD/pneumonitis led to permanent discontinuation of EMRELIS in 7% of patients. The median time to onset of ILD/pneumonitis leading to treatment discontinuation was 46 days (range: 23 to 85 days).

Advise patients to immediately report cough, dyspnea, fever, and/or any new or worsening respiratory symptoms. Monitor patients for signs and symptoms of ILD/pneumonitis. Withhold or permanently discontinue EMRELIS based on severity [see *Dosage and Administration* (2.3)].

## **5.3 Ocular Surface Disorders**

EMRELIS can cause ocular surface disorders including blurred vision, visual impairment, keratitis, and dry eye.

In the safety population [see *Adverse Reactions* (6.1)], ocular surface disorders occurred in 25% of patients treated with EMRELIS. The most common ocular surface disorders were blurred vision (15%), keratitis (11%), and dry eye (5%). Grade 3 ocular surface disorders occurred in 1.2% of patients [blurred vision (1.2%), and keratitis (0.6%)]. The median time to onset of ocular surface disorders was 47 days (range: 1 to 319 days).

Monitor patients for ocular surface disorders during treatment with EMRELIS. Withhold EMRELIS and refer patients to an eye care professional for an ophthalmic examination and treatment for patients who develop Grade  $\geq 2$  ocular toxicity. Withhold or permanently discontinue EMRELIS based on severity [see *Dosage and Administration* (2.3)].

## **5.4 Infusion-Related Reactions**

EMRELIS can cause infusion-related reactions (IRR); signs and symptoms of IRR include dyspnea, flushing, chills, nausea, chest discomfort, and hypotension. The median time to onset of IRR was 28 days (range: 1 to 43 days).

In the safety population, [see *Adverse Reactions* (6.1)], IRR occurred in 3% of patients treated with EMRELIS including Grade 3 in 1.2% and Grade 4 in 0.6%. IRR led to permanent discontinuation of EMRELIS in 0.6% of patients.

Monitor patients for signs and symptoms of infusion reactions during EMRELIS infusion. Withhold, reduce the rate of infusion, or permanently discontinue EMRELIS based on severity [see *Dosage and Administration* (2.3)]. For patients who experience



IRR, administer premedications prior to subsequent infusions.

## 5.5 Embryo-Fetal Toxicity

Based on the mechanism of action and findings in animals, EMRELIS can cause fetal harm when administered to a pregnant woman. The small molecule component of EMRELIS, MMAE, administered to rats caused adverse developmental outcomes, including embryo-fetal mortality and structural abnormalities, at exposures similar to those occurring clinically at the recommended dose.

Advise patients of the potential risk to a fetus. Advise females of reproductive potential to use effective contraception during treatment with EMRELIS and for 2 months after the last dose. Advise male patients with female partners of reproductive potential to use effective contraception during treatment with EMRELIS and for 4 months after the last dose [see *Use in Specific Populations (8.1, 8.3) and Clinical Pharmacology (12.1)*].

## 6 ADVERSE REACTIONS

The following clinically significant adverse reactions are described elsewhere in the labeling:

- Peripheral Neuropathy [see *Warnings and Precautions (5.1)*]
- Interstitial Lung Disease (ILD)/Pneumonitis [see *Warnings and Precautions (5.2)*]
- Ocular Surface Disorders [see *Warnings and Precautions (5.3)*]
- Infusion-Related Reactions (IRR) [see *Warnings and Precautions (5.4)*]

### 6.1 Clinical Trials Experience

Because clinical studies are conducted under widely varying conditions, adverse reaction rates observed in the clinical studies of a drug cannot be directly compared to rates in the clinical studies of another drug and may not reflect the rates observed in practice.

#### LUMINOSITY

The safety population described in WARNINGS AND PRECAUTIONS and below reflects exposure to EMRELIS in 168 patients with locally advanced or metastatic EGFR wild-type non-squamous NSCLC with c-Met protein overexpression who received EMRELIS as a single agent administered at 1.9 mg/kg intravenously every 2 weeks in the LUMINOSITY study [see *Clinical Studies (14)*]. Among patients who received EMRELIS, 42% were exposed for 6 months or longer and 11% were exposed for greater than one year.

The median age of patients who received EMRELIS was 64.5 years (range: 33 to 83 years); 70% were male; 65% were White; 1.8% were Black or African American, 33% were Asian; and 0.6% were of Hispanic or Latino ethnicity.

Serious adverse reactions occurred in 35% of patients. Serious adverse reactions occurring in  $\geq 2\%$  of patients included ILD/pneumonitis (5%), pneumonia (5%), peripheral neuropathy (3.6%), and pleural effusion (2.4%). Fatal adverse reactions occurred in 5% of patients who received EMRELIS, including ILD/pneumonitis (1.8%), pneumonia (1.2%), sudden death (1.2%), noninfectious endocarditis (0.6%) and myocardial infarction (0.6%).

Permanent discontinuations of EMRELIS due to adverse reactions occurred in 30% of patients. Adverse reactions which resulted in permanent discontinuation of EMRELIS in

≥2% included peripheral neuropathy and ILD/pneumonitis.

Dosage interruptions due to adverse reactions occurred in 44% of patients. Adverse reactions which required dosage interruption in ≥2% of patients included peripheral neuropathy, fatigue, pneumonia, increased ALT, blurred vision, COVID-19, ILD/pneumonitis, and keratitis.

Dose reductions due to adverse reactions occurred in 28% of patients. Adverse reactions which required dose reductions in ≥2% of patients included peripheral neuropathy, fatigue, and keratitis.

The most common adverse reactions (≥20%) were peripheral neuropathy, fatigue, decreased appetite, and peripheral edema.

The most common Grade 3 or 4 laboratory abnormalities (≥2%) were decreased lymphocytes, increased glucose, increased ALT, increased gamma glutamyl transferase, decreased phosphorus, decreased sodium, decreased hemoglobin and decreased calcium.

Table 5 summarizes the adverse reactions in LUMINOSITY.

**Table 5. Adverse Reactions (≥10%) in Patients with EGFR Wild-Type Non-squamous NSCLC with c-Met Protein Overexpression in LUMINOSITY**

Adverse Reaction	EMRELIS (N=168)	
	All Grades <sup>1</sup> %	Grade 3 or 4 <sup>1</sup> %
<b>Nervous system disorders</b>		
Peripheral neuropathy <sup>2</sup>	51	11
<b>General disorders and administration site conditions</b>		
Fatigue <sup>2</sup>	29	3.6
Peripheral edema <sup>2</sup>	22	1.8
<b>Metabolism and nutrition disorders</b>		
Decreased appetite	22	0.6
<b>Gastrointestinal disorders</b>		
Nausea	15	0
Constipation	14	0.6
Vomiting	10	0.6
<b>Eye disorders</b>		
Blurred vision <sup>3</sup>	15	1.2
Keratitis <sup>4</sup>	11	0.6
<b>Infections and infestations</b>		
Pneumonia <sup>2</sup>	13	6
<b>Respiratory, thoracic and mediastinal disorders</b>		
ILD/pneumonitis <sup>2</sup>	10	3.6
<sup>1</sup> Events were graded using NCI CTCAE version 4.03.		
<sup>2</sup> Grouped term.		

<sup>3</sup>Includes vision blurred, visual acuity reduced, visual impairment.

<sup>4</sup>Includes corneal cyst, corneal disorder, corneal erosion, corneal edema, corneal opacity, keratitis, keratitis interstitial, punctate keratitis.

Other clinically relevant adverse reactions in <10% of patients who received EMRELIS included arthralgia, dizziness, dry eye, infusion-related reaction and photophobia.

Table 6 presents laboratory abnormalities in LUMINOSITY.

**Table 6. Select Laboratory Abnormalities (≥10%) that Worsened from Baseline in Patients with EGFR Wild-Type Non-squamous NSCLC with c-Met Protein Overexpression in LUMINOSITY**

Laboratory Abnormality	EMRELIS (N=168)	
	All Grades %	Grade 3 or 4 %
<b>Chemistry</b>		
Albumin decreased	61	0.6
Glucose increased	58	4.8
Calcium decreased	47	2.4
Alanine transaminase increased	41	4.8
Gamma glutamyl transferase increased	36	4.3
Aspartate aminotransferase increased	34	0.6
Phosphorus decreased	33	4.2
Sodium decreased	30	3.6
Alkaline phosphatase increased	30	0.6
Creatinine increased	16	1.2
Potassium decreased	14	1.2
Magnesium decreased	14	0.6
Glucose decreased	11	0
Magnesium increased	10	0
<b>Hematology</b>		
Lymphocytes decreased	37	10
Hemoglobin decreased	35	3.6
White blood cells decreased	16	1.2
Platelets decreased	14	0.6
Neutrophils decreased	10	1.2

Percentages were calculated using patients with worsening laboratory values from baseline and the number of patients with both baseline and post-treatment measurements as the denominator.

## 7 DRUG INTERACTIONS

### 7.1 Effect of Other Drugs on EMRELIS

#### Strong CYP3A Inhibitors

Concomitant use with strong CYP3A inhibitors may increase unconjugated MMAE AUC [see *Clinical Pharmacology (12.3)*], which may increase the risk of EMRELIS adverse reactions. Monitor patients for adverse reactions when EMRELIS is given concomitantly with strong CYP3A inhibitors.

## 8 USE IN SPECIFIC POPULATIONS

### 8.1 Pregnancy

#### Risk Summary

Based on the mechanism of action and findings in animals, EMRELIS can cause fetal harm when administered to a pregnant woman [see *Clinical Pharmacology (12.1)*]. There are no available human data on EMRELIS use in pregnant women to inform a drug-associated risk. In an animal reproduction study, administration of the small molecule component of EMRELIS, MMAE, to pregnant rats during organogenesis resulted in embryo-fetal mortality and structural abnormalities at exposures similar to the clinical exposure at the recommended dose [see *Data*]. Advise patients of the potential risks to a fetus.

In the U.S. general population, the estimated background risk of major birth defects and miscarriage in clinically recognized pregnancies is 2% to 4% and 15% to 20%, respectively.

#### Data

##### *Animal Data*

No embryo-fetal development studies in animals have been performed with telisotuzumab vedotin-ttlv. In an embryo-fetal development study in pregnant rats, administration of two intravenous doses of MMAE, the small molecule component of EMRELIS, on gestational days 6 and 13 caused embryo-fetal mortality and structural abnormalities, including protruding tongue, agnathia, malrotated limbs, and gastroschisis compared to controls at a dose of 0.2 mg/kg (approximately 2 times the human area under the curve [AUC] at the recommended dose).

### 8.2 Lactation

#### Risk Summary

There are no data on the presence of telisotuzumab vedotin-ttlv or MMAE in human milk, the effects on the breastfed child, or the effects on milk production. Because of the potential for serious adverse reactions in a breastfed child, advise lactating women not to breastfeed during treatment with EMRELIS and for 1 month after the last dose.

### 8.3 Females and Males of Reproductive Potential

EMRELIS can cause fetal harm when administered to a pregnant woman [see *Use in*

*Specific Populations (8.1)].*

### Pregnancy Testing

Verify pregnancy status in females of reproductive potential prior to initiating EMRELIS treatment.

### Contraception

#### *Females*

Advise females of reproductive potential to use effective contraception during treatment with EMRELIS and for 2 months after the last dose.

#### *Males*

Based on genotoxicity findings, advise male patients with female partners of reproductive potential to use effective contraception during treatment with EMRELIS and for 4 months after the last dose.

### Infertility

#### *Females*

Based on findings in animal studies with MMAE-containing antibody-drug conjugates (ADCs), EMRELIS may impair female fertility. The effect on fertility is reversible [see *Nonclinical Toxicology (13.1)*].

#### *Males*

Based on findings from animal studies, EMRELIS may impair male fertility. The reversibility of this effect is unknown [see *Nonclinical Toxicology (13.1)*].

## **8.4 Pediatric Use**

Safety and effectiveness of EMRELIS have not been established in pediatric patients.

## **8.5 Geriatric Use**

Of the 168 patients with previously treated EGFR wild-type non-squamous NSCLC with c-Met protein overexpression treated with EMRELIS in LUMINOSITY, 50% were  $\geq 65$  years of age and 12% were  $\geq 75$  years of age. No overall differences in safety or effectiveness were observed between older and younger patients.

## **8.6 Hepatic Impairment**

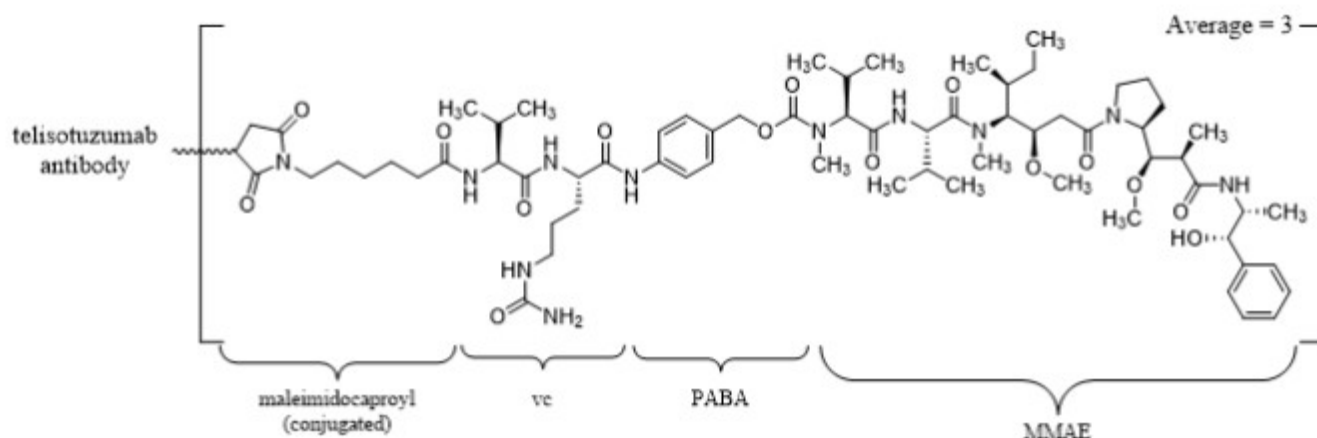
Avoid use of EMRELIS in patients with moderate or severe hepatic impairment (total bilirubin  $>1.5 \times$  ULN and any AST).

Patients with moderate or severe hepatic impairment are likely to have increased exposure to MMAE, which may increase the risk of adverse reactions. EMRELIS has not been studied in patients with moderate or severe hepatic impairment.

No dosage adjustment is recommended for patients with mild hepatic impairment (total bilirubin  $\leq$ ULN and AST  $>$ ULN or total bilirubin  $>$ ULN and  $\leq 1.5 \times$  ULN and any AST) [see *Clinical Pharmacology (12.3)*].

## 11 DESCRIPTION

Telisotuzumab vedotin-tllv is a c-Met directed antibody-drug conjugate (ADC) comprised of a humanized immunoglobulin G1 kappa (IgG1κ) monoclonal antibody conjugated to the small molecule microtubule-disrupting agent, monomethyl auristatin E (MMAE), via a protease-cleavable valine-citrulline (vc) linker. The antibody is produced in a mammalian cell line (Chinese hamster ovary) and the drug-linker is produced by chemical synthesis. Each monoclonal antibody molecule carries an average of 3 MMAE molecules. Telisotuzumab vedotin-tllv has an approximate molecular weight of 152 kDa.



EMRELIS (telisotuzumab vedotin-tllv) for injection is a sterile, white to off-white, preservative-free, lyophilized powder in a single-dose vial for reconstitution and dilution prior to intravenous infusion. EMRELIS is supplied as 20 mg per vial or 100 mg per vial and requires reconstitution with Sterile Water for Injection, USP (1.1 mL and 5.2 mL, respectively) to obtain a concentration of 20 mg/mL [see *Dosage and Administration* (2.4)]. Following reconstitution, each mL delivers 20 mg of telisotuzumab vedotin-tllv, and histidine (2.33 mg), polysorbate 80 (0.10 mg), sucrose (70.0 mg), and Water for Injection. Hydrochloric acid was added to adjust the pH to 6.0.

## 12 CLINICAL PHARMACOLOGY

### 12.1 Mechanism of Action

Telisotuzumab vedotin-tllv is a c-Met-directed antibody drug conjugate (ADC). The antibody is a humanized IgG1κ directed against c-Met, the cell surface receptor for hepatocyte growth factor. The small molecule, MMAE, is a microtubule-disrupting agent, attached to the antibody via a protease cleavable linker. Following binding to c-Met-expressing cells, telisotuzumab vedotin-tllv undergoes internalization and intracellular cleavage of MMAE. MMAE disrupts the microtubule network of actively dividing cells, subsequently inducing cell cycle arrest and apoptotic cell death. Telisotuzumab vedotin-tllv exhibited antitumor activity in xenograft models of NSCLC.

### 12.2 Pharmacodynamics

#### Exposure Response Relationships

Exposure-response relationships for efficacy and time course of pharmacodynamic response have not been fully characterized.

Higher telisotuzumab vedotin-tllv exposure was associated with increased rates of Grade 3 peripheral neuropathy, and Grades 2 and 3 ocular surface disorders. Higher unconjugated MMAE exposure was associated with increased rates of Grade  $\geq 3$  adverse reactions and fatal adverse reactions.

### Cardiac Electrophysiology

There is insufficient information to characterize the effect of telisotuzumab vedotin-tllv on the QT interval.

## **12.3 Pharmacokinetics**

The exposure parameters of telisotuzumab vedotin-tllv (ADC) and unconjugated MMAE (cytotoxic component of EMRELIS) are summarized in Table 7. The plasma exposure of the ADC and unconjugated MMAE increased proportionally over a dose range of 1.2 to 3.3 mg/kg (0.64 to 1.7 times the approved recommended dose). ADC time to maximum plasma concentrations ( $T_{max}$ ) occurs at the end of intravenous infusion while MMAE  $T_{max}$  occurs approximately 5 days after EMRELIS administration. Minimal accumulation of the ADC or MMAE occurs.

**Table 7. Exposure Parameters of Telisotuzumab Vedotin-tllv (ADC) and Unconjugated MMAE at EMRELIS 1.9 mg/kg Every 2 Weeks**

	<b>ADC</b>	<b>Unconjugated MMAE</b>
$C_{max}$	29 (43) $\mu\text{g/mL}$	2.2 (53) $\text{ng/mL}$
$\text{AUC}_{0-\tau}$	2,130 (55) $\mu\text{g}\cdot\text{hr/mL}$	405 (64) $\text{ng}\cdot\text{hr/mL}$

$C_{max}$  = maximum concentration

$\text{AUC}_{0-\tau}$  = area under the concentration-time curve from time zero to 14 days (2 weeks)

### Distribution

The estimated volume of distribution is 3.4 L (16.5%CV) for telisotuzumab vedotin-tllv.

MMAE plasma protein binding ranges from 68% to 82% *in vitro*.

### Elimination

The elimination half-life is approximately 3 days for the ADC and approximately 4 days for MMAE. The estimated clearance (CL) is 1.3 L/day (31.5%CV) for the ADC and 76 L/day (52.1%CV) for MMAE.

### Metabolism

Telisotuzumab vedotin-tllv catabolism has not been studied in humans; however, it is expected to undergo catabolism to small peptides, amino acids, unconjugated MMAE, and unconjugated MMAE-related catabolites. MMAE is metabolized primarily by CYP3A4.

### Specific Populations

No clinically significant differences in the pharmacokinetics of the ADC or unconjugated MMAE were observed based on age (30 to 87 years), sex, race (65% White, 32% Asian, and 3% Black), body weight (34 to 144 kg), mild or moderate renal impairment (CLcr 30

to 89 mL/min, estimated by Cockcroft-Gault), or mild hepatic impairment (total bilirubin  $\leq$ ULN and AST  $>$ ULN or total bilirubin  $>$ ULN and  $\leq 1.5 \times$  ULN and any AST).

The effect of severe renal impairment (CLcr  $< 30$  mL/min), end-stage renal disease with or without dialysis, or moderate to severe hepatic impairment (total bilirubin  $> 1.5 \times$  ULN and any AST) on the pharmacokinetics of telisotuzumab vedotin-ttlv or unconjugated MMAE is unknown.

### Drug Interaction Studies

#### *Clinical Studies and Model-Informed Approaches:*

No clinical studies have evaluated the potential for drug-drug interactions.

#### *Strong CYP3A4 Inhibitor:*

MMAE AUC is predicted to increase by 1.4-fold following concomitant administration of EMRELIS with ketoconazole (a strong CYP3A inhibitor).

#### *Strong CYP3A4 Inducer:*

MMAE AUC is predicted to decrease by 70% following concomitant administration of EMRELIS with rifampicin (a strong CYP3A inducer).

#### *Sensitive CYP3A Substrate:*

No clinically significant difference in the pharmacokinetics of midazolam (a sensitive CYP3A substrate) is predicted when used concomitantly with EMRELIS.

### In Vitro Studies

#### *Cytochrome P450 (CYP) Enzymes:*

MMAE is a substrate and an inhibitor of CYP3A4/5.

#### *Transporter Systems:*

MMAE is a substrate of P-glycoprotein (P-gp).

## **12.6 Immunogenicity**

The observed incidence of anti-drug antibodies is highly dependent on the sensitivity and specificity of the assay. Differences in assay methods preclude meaningful comparisons of the incidence of anti-drug antibodies in the study described below with the incidence of anti-drug antibodies in other studies, including those of EMRELIS or of other telisotuzumab products.

Following administration of EMRELIS in LUMINOSITY, 22% (60/269) of patients tested positive for treatment-emergent antibodies against telisotuzumab vedotin-ttlv at one or more post-baseline time points. Of those who tested positive for anti-drug antibody, neutralizing antibodies were detected in 38% (23/60) of patients. Development of anti-drug antibodies and neutralizing antibodies resulted in a 17% decrease in clearance of telisotuzumab vedotin-ttlv. There are insufficient data to assess whether the observed anti-telisotuzumab vedotin-ttlv antibody-associated pharmacokinetic changes affect the safety and effectiveness of EMRELIS.

## **13 NONCLINICAL TOXICOLOGY**



## 13.1 Carcinogenesis, Mutagenesis, Impairment of Fertility

### Carcinogenesis

Carcinogenicity studies in animals have not been performed with telisotuzumab vedotin-tllv or the small molecule MMAE.

### Mutagenesis

MMAE was positive for genotoxicity in the *in vivo* rat bone marrow micronucleus study through an aneugenic mechanism. MMAE was not mutagenic in the bacterial reverse mutation (Ames) assay or the L5178Y TK<sup>+</sup>/<sup>-</sup> mouse lymphoma forward mutation assay.

### Impairment of Fertility

Fertility studies with telisotuzumab vedotin-tllv or MMAE have not been conducted. However, results of repeat-dose toxicity studies in rats and monkeys indicate the potential for telisotuzumab vedotin-tllv to impair male and female reproductive function and fertility.

In a 2-week repeat-dose toxicology study in rats, telisotuzumab vedotin-tllv administered at doses  $\geq 6$  mg/kg ( $\geq 12$  times the human exposure [AUC] at the recommended dose) resulted in decreased number/degeneration of germ cells in the testes largely due to loss of spermatogonia. The reversibility of these findings was not assessed.

In a 4-week repeat-dose toxicology study in sexually immature monkeys, telisotuzumab vedotin-tllv administered at doses  $\geq 3$  mg/kg ( $\geq 4$  times the human exposure [AUC] at the recommended dose) resulted in degeneration of granulosa cells and decreased number of tertiary follicles in the ovaries and degeneration/necrosis of endometrial glands in the uterus. There was evidence of reversibility after an 8-week recovery period.

## 14 CLINICAL STUDIES

### **Previously Treated EGFR Wild-Type Non-squamous NSCLC with High c-Met Protein Overexpression**

#### LUMINOSITY

The efficacy of EMRELIS was evaluated in the LUMINOSITY study (NCT03539536), a multicenter, open-label, single-arm, multi-cohort clinical trial. Eligible patients were required to have locally advanced or metastatic NSCLC with c-Met protein overexpression and treatment with prior systemic therapy (including no more than one line of prior chemotherapy) in the locally advanced or metastatic setting. The study excluded patients who had received radiation therapy to the lungs  $< 6$  months prior to enrollment and patients who had a history of ILD/pneumonitis requiring treatment with steroids or ILD/pneumonitis within 3 months of the first dose.

Patients received EMRELIS at 1.9 mg/kg intravenously every 2 weeks until disease progression or unacceptable toxicity. The major efficacy outcome measure was overall response rate (ORR) according to Response Evaluation Criteria in Solid Tumors (RECIST) version 1.1 as assessed by a blinded independent central review (BICR). An additional efficacy outcome measure was duration of response (DOR) by BICR.

The efficacy population included 84 patients with non-squamous, EGFR wild-type NSCLC with high c-Met protein overexpression who had received prior systemic therapy.

High c-Met protein overexpression was defined as  $\geq 50\%$  of tumor cells with strong (3+) membrane staining on archival or recent tissue samples by immunohistochemistry (IHC) and was determined by prospective testing at a central laboratory prior to enrollment using the MET (SP44) clinical trial assay (CTA). Of the 84 patients with high c-Met protein overexpression identified by central testing using the CTA, tissue samples from 38/84 (45%) patients were tested retrospectively using the VENTANA MET (SP44) RxDx assay. One sample was unevaluable. Of the 37 samples retested and evaluable, 32 (87%) samples were confirmed to have high c-Met protein overexpression, defined as  $\geq 50\%$  of tumor cells with strong (3+) membrane and/or cytoplasmic staining.

The median age was 64 years (range: 38 to 83 years); 75% were male; 61% were White, 1.2% were Black or African American, 38% were Asian; none were of Hispanic or Latino ethnicity. Twenty-five percent had an Eastern Cooperative Oncology Group Performance Status (ECOG PS) of 0 and 74% had ECOG PS of 1; 19% were never smokers, 68% were former smokers, and 13% were current smokers; 99% had Stage IV disease; and 19% of patients had previously treated brain metastases. The median number of lines of prior therapies was 1 (range 1 - 3); 73% of patients had one line, 24% had two lines, and 3.6% had three lines of prior systemic therapy; 96% of patients had prior platinum therapy, 82% had prior immunotherapy (anti-PD-1/PD-L1), 6% had prior targeted therapy, and 3.6% had prior MET tyrosine kinase inhibitor therapy.

Efficacy results are summarized in Table 8.

**Table 8. Efficacy Results in LUMINOSITY for Patients with EGFR Wild-Type Non-squamous NSCLC with High c-Met Protein Overexpression**

<b>Efficacy Parameter</b>	<b>EMRELIS N = 84</b>
<b>Confirmed Overall Response Rate (ORR), %</b> (95% CI)	35 (24, 46)
Complete Response, %	0
Partial Response, %	35
<b>Duration of Response</b>	<b>N = 29</b>
Median, months (95% CI)	7.2 (4.2, 12)
DOR $\geq 6$ months, <sup>a</sup> %	59
DOR $\geq 12$ months, <sup>a</sup> %	21
CI=confidence interval; DOR=duration of response <sup>a</sup> Based on observed duration of response in 29 responders.	

## 15 REFERENCES

1. "OSHA Hazardous Drugs." OSHA.  
<http://www.osha.gov/SLTC/hazardousdrugs/index.html>

## 16 HOW SUPPLIED/STORAGE AND HANDLING

### How Supplied

EMRELIS (telisotuzumab vedotin-tllv) for injection is a sterile, preservative-free, white to off-white lyophilized powder, supplied in a glass single-dose vial.

- Carton of one 20 mg/vial (NDC 0074-1044-01)
- Carton of one 100 mg/vial (NDC 0074-1055-01)

### Storage and Handling

Store refrigerated at 2°C to 8°C (36°F to 46°F) in original carton to protect from light. Do not freeze. Do not shake.

### Special Handling

EMRELIS is a hazardous product. Follow special handling and disposal procedures.<sup>1</sup>

## **17 PATIENT COUNSELING INFORMATION**

Advise the patient to read the FDA-approved patient labeling (Medication Guide).

### Peripheral Neuropathy

Advise patients that EMRELIS can cause peripheral neuropathy. Advise patients to report to their healthcare provider any new or worsening numbness or tingling of the hands or feet or any muscle weakness *[see Warnings and Precautions (5.1)]*.

### ILD/Pneumonitis

Advise patients that EMRELIS can cause ILD/pneumonitis. Advise patients to immediately report to their healthcare provider any new or worsening respiratory symptoms *[see Warnings and Precautions (5.2)]*.

### Ocular Surface Disorders

Advise patients that EMRELIS can cause ocular surface disorders. Advise patients to contact their healthcare provider any new or worsening ocular problems or vision changes *[see Warnings and Precautions (5.3)]*.

### Infusion-Related Reactions

Advise patients that EMRELIS can cause infusion-related reactions. Advise patients to immediately contact their healthcare provider if they experience signs and symptoms of infusion reactions, including fever, chills, rash, or breathing problems *[see Warnings and Precautions (5.4)]*.

### Embryo-Fetal Toxicity

Advise pregnant women and females of reproductive potential of the potential risk to a fetus. Advise female patients to contact their healthcare provider if they become pregnant, or if pregnancy is suspected, during treatment with EMRELIS *[see Warnings and Precautions (5.5) and Use in Specific Populations (8.1)]*.

### Females and Males of Reproductive Potential

- Advise females of reproductive potential to use effective contraception during treatment and for 2 months after the last dose *[see Use in Specific Populations (8.3)]*.
- Advise male patients with female partners of reproductive potential to use effective contraception during treatment and for 4 months after the last dose *[see Use in*

*Specific Populations (8.3)].*

### Lactation

Advise women not to breastfeed during treatment with EMRELIS and for 1 month after the last dose [see *Use in Specific Populations (8.2)*].

### Infertility

Advise males and females of reproductive potential that EMRELIS may impair fertility [see *Nonclinical Toxicology (13)*].

EMRELIS™ [telisotuzumab vedotin-tllv]

Manufactured by:

**AbbVie Inc.**

North Chicago, IL 60064, U.S.A.

U.S. License No. 1889

© 2025 AbbVie. All rights reserved.

EMRELIS and its design are trademarks of AbbVie Inc.

20090524

## **MEDICATION GUIDE**

EMRELIS™ (EM-rell-is)  
(telisotuzumab vedotin-tllv)  
for injection, for intravenous use

### **What is the most important information I should know about EMRELIS?**

#### **EMRELIS can cause serious side effects, including:**

- **Nerve problems in your hands or feet (peripheral neuropathy).** Nerve problems are common during treatment with EMRELIS and can also be severe. Tell your healthcare provider if you develop any new or worsening signs or symptoms of nerve problems, including:
  - numbness
  - tingling
  - burning sensation
  - pain or discomfort
  - muscle weakness
  - difficulty walking
- **Lung problems.** EMRELIS can cause lung problems that may be severe, life-threatening or that may lead to death. Tell your healthcare provider right away if you develop new or worsening lung symptoms, including:
  - cough
  - trouble breathing or shortness of breath
  - fever
  - wheezing
- **Eye problems.** Your healthcare provider may send you to an eye care professional to check your eyes if you develop eye problems. Tell your healthcare provider right away if you develop any new or worsening eye problems or vision changes, including:
  - blurred vision
  - dry eyes
  - eye pain or swelling
  - eye redness

- sensitivity to light

• **Infusion-related reactions.** EMRELIS can cause infusion reactions that can be severe or life-threatening. Tell your healthcare provider right away if you develop any signs and symptoms of infusion reactions, including:

- itching or rash
- shortness of breath or wheezing
- flushing
- chest discomfort
- fever
- back pain
- chills
- headache
- nausea or vomiting
- feel like passing out

**Getting medical treatment right away may help keep these problems from becoming more serious.** Your healthcare provider will check you for these problems during your treatment with EMRELIS and may provide treatment for your side effects. Your healthcare provider may also need to change your dose, temporarily stop, or completely stop treatment with EMRELIS if you have severe side effects. See **“What are the possible side effects of EMRELIS?”** for more information about side effects.

### **What is EMRELIS?**

EMRELIS is a prescription medicine used to treat adults with non-squamous non-small cell lung cancer (NSCLC):

- that has spread to areas near the lungs (locally advanced) or to other parts of the body (metastatic), **and**
- whose tumors have high c-Met protein overexpression, **and**
- who have received a prior treatment.

Your healthcare provider will perform a test to make sure EMRELIS is right for you. It is not known if EMRELIS is safe and effective in children.

### **Before receiving EMRELIS, tell your healthcare provider about all of your medical conditions, including if you:**

- have a history of nerve problems
- have lung or breathing problems other than your lung cancer
- have eye problems
- have liver problems
- are pregnant or plan to become pregnant. EMRELIS can harm your unborn baby.

### **Females who are able to become pregnant:**

- Your healthcare provider should do a pregnancy test before you start treatment with EMRELIS.
- You should use effective birth control (contraception) during treatment and for 2 months after your last dose of EMRELIS.
- Tell your healthcare provider if you become pregnant or think that you may be pregnant during treatment with EMRELIS.

### **Males with female partners who are able to become pregnant:**

- You should use an effective birth control during treatment and for 4 months after your last dose of EMRELIS.
- are breastfeeding or plan to breastfeed. It is not known if EMRELIS passes into your

breast milk. Do not breastfeed during treatment with EMRELIS and for 1 month after the last dose.

**Tell your healthcare provider about all the medicines you take**, including prescription and over-the-counter medicines, vitamins, and herbal supplements. Taking certain medicines with EMRELIS may increase your risk of side effects.

**How will I receive EMRELIS?**

- Your healthcare provider will give you EMRELIS into your vein through an intravenous (IV) line over 30 minutes.
- EMRELIS is given 1 time every 2 weeks.
- Your healthcare provider will decide how many infusions of EMRELIS you will receive.

**What are the possible side effects of EMRELIS?**

**EMRELIS can cause serious side effects, including:**

- See **“What is the most important information I should know about EMRELIS?”**

**The most common side effects of EMRELIS include:**

- feeling tired
- swelling in the feet, ankles, legs or hands
- decreased appetite

**The most common severe abnormal laboratory test results with EMRELIS include:**

- decreased white blood cell counts
- increased blood sugar levels
- increased blood liver enzyme levels
- decreased blood phosphorus levels
- decreased blood sodium levels
- decreased red blood cell counts
- decreased blood calcium levels

EMRELIS may cause fertility problems in females and males, which may affect the ability to have children. Talk to your healthcare provider if you have concerns about fertility. These are not all the possible side effects of EMRELIS.

Call your doctor for medical advice about side effects. You may report side effects to FDA at 1-800-FDA-1088.

**General information about the safe and effective use of EMRELIS.**

Medicines are sometimes prescribed for purposes other than those listed in a Medication Guide. You can ask your pharmacist or healthcare provider for information about EMRELIS that is written for healthcare professionals.

**What are the ingredients in EMRELIS?**

**Active ingredient:** telisotuzumab vedotin-tlrv

**Inactive ingredients:** histidine, polysorbate 80, sucrose. Hydrochloric acid added to adjust the pH.

Manufactured by: AbbVie Inc., North Chicago, IL 60064, USA

U.S. License Number: 1889

Marketed by: AbbVie Inc., North Chicago, IL 60064 U.S.A.

©2025 AbbVie. All rights reserved.

EMRELIS and its design are trademarks of AbbVie Inc.

For more information, go to [www.EMRELIS.com](http://www.EMRELIS.com) or call 1-844-859-5760.

This Medication Guide has been approved by the U.S. Food and Drug Administration. Issued: 05/2025

20090524

PRINCIPAL DISPLAY PANEL

NDC 0074-1044-01

Emrelis™

(telisotuzumab vedotin-tllv)

For Injection

20 mg per vial

Hazardous Drug

For Intravenous Infusion after reconstitution  
and dilution

Single-Dose Vial

Discard Unused Portion

Dispense the enclosed Medication Guide to  
each patient

Rx Only

abbvie

NS / LOT / dX3			
<p>NDC 0074-1044-01</p> <p> <b>Emrelis™</b> (telisotuzumab vedotin-tllv) For Injection</p> <p><b>20 mg per vial</b></p> <p><b>Hazardous Drug</b></p> <p>For Intravenous Infusion after reconstitution and dilution</p> <p>Single-Dose Vial Discard Unused Portion</p> <p>Dispense the enclosed Medication Guide to each patient</p> <p>Rx Only      <b>abbvie</b></p>	<p>Do not accept if seal over carton opening is broken or missing.</p> <p>U.S. License No. 1889</p> <p>Manufactured by: AbbVie Inc. North Chicago, IL 60064, U.S.A.</p> <p>©2025 AbbVie Inc. All rights reserved.</p> <p>EMRELIS and its design are trademarks of AbbVie Inc.</p> <p>GTIN: 00300741044012</p> <p></p> <p>3    00741 04401    2</p> <p>20086333</p>	<p>NDC 0074-1044-01</p> <p> <b>Emrelis™</b> (telisotuzumab vedotin-tllv) For Injection</p> <p><b>20 mg per vial</b></p> <p><b>Hazardous Drug</b></p> <p>For Intravenous Infusion after reconstitution and dilution</p> <p>Single-Dose Vial Discard Unused Portion</p> <p>Dispense the enclosed Medication Guide to each patient</p> <p>Rx Only      <b>abbvie</b></p>	<p>No Preservative.</p> <p>Store refrigerated at 2°C to 8°C (36°F to 46°F) in original carton to protect from light. Do not freeze. Do not shake.</p> <p><b>Reconstitution:</b> Add 1.1 mL of Sterile Water for Injection to each single-dose vial to obtain a concentration of 20 mg/mL. Swirl gently. Do not shake.</p> <p>Following reconstitution, each mL delivers 20 mg of telisotuzumab vedotin-tllv and histidine (2.33 mg), polysorbate 80 (0.10 mg), sucrose (70.0 mg), and Water for Injection at pH of 6. Hydrochloric acid added to adjust the pH.</p> <p><b>Dilution:</b> Dilute the calculated amount of reconstituted solution in 0.9% Sodium Chloride Injection so that the final concentration is between 1 mg/mL and 10 mg/mL.</p> <p><b>Recommended Dosage:</b> See Prescribing Information.</p>

PRINCIPAL DISPLAY PANEL

NDC 0074-1055-01

Emrelis™

(telisotuzumab vedotin-tllv)

For Injection

100 mg per vial

Hazardous Drug

For Intravenous Infusion after reconstitution  
and dilution

Single-Dose Vial

Discard Unused Portion

Dispense the enclosed Medication Guide to  
each patient

Rx Only

abbvie

NS / 101 / dX3

NDC 0074-1055-01

**Emrelis™**  
(telisotuzumab vedotin-tllv)  
For Injection

100 mg per vial

**Hazardous Drug**

For Intravenous Infusion after reconstitution  
and dilution

Single-Dose Vial  
Discard Unused Portion

Dispense the enclosed Medication Guide to  
each patient

Rx Only

abbvie

Do not accept if seal over carton opening is broken or missing.

U.S. License No. 1889

Manufactured by:  
AbbVie Inc.  
North Chicago, IL 60064, U.S.A.

©2025 AbbVie Inc. All rights reserved.

EMRELIS and its design are  
trademarks of AbbVie Inc.

GTIN: 00300741055018

  
3 00741 05501 8

20086334

NDC 0074-1055-01

**Emrelis™**  
(telisotuzumab vedotin-tllv)  
For Injection

100 mg per vial

**Hazardous Drug**

For Intravenous Infusion after reconstitution  
and dilution

Single-Dose Vial  
Discard Unused Portion

Dispense the enclosed Medication Guide to  
each patient

Rx Only

abbvie

No Preservative.

Store refrigerated at 2°C to 8°C (36°F to 46°F) in original carton to protect from light. Do not freeze. Do not shake.

Reconstitution: Add 5.2 mL of Sterile Water for Injection to each single-dose vial to obtain a concentration of 20 mg/mL. Swirl gently. Do not shake.

Following reconstitution, each mL delivers 20 mg of telisotuzumab vedotin-tllv and histidine (2.33 mg), polysorbate 80 (0.10 mg), sucrose (70.0 mg), and Water for Injection at pH of 6. Hydrochloric acid added to adjust the pH.

Dilution: Dilute the calculated amount of reconstituted solution in 0.9% Sodium Chloride Injection so that the final concentration is between 1 mg/mL and 10 mg/mL.

Recommended Dosage: See Prescribing Information.

TELISOTUZUMAB VEDOTIN

telisotuzumab vedotin injection, powder, lyophilized, for solution

Product Information			
Product Type	HUMAN PRESCRIPTION DRUG	Item Code (Source)	NDC:0074-1044
Route of Administration	INTRAVENOUS		



Active Ingredient/Active Moiety				
Ingredient Name			Basis of Strength	Strength
TELISOTUZUMAB VEDOTIN (UNII: 976X9VXC3Z) (TELISOTUZUMAB VEDOTIN - UNII:976X9VXC3Z)			TELISOTUZUMAB VEDOTIN	20 mg in 1 mL
Inactive Ingredients				
Ingredient Name			Strength	
HISTIDINE (UNII: 4QD397987E)			2.33 mg in 1 mL	
POLYSORBATE 80 (UNII: 6OZP39ZG8H)			0.10 mg in 1 mL	
SUCROSE (UNII: C151H8M554)			70.0 mg in 1 mL	
WATER (UNII: 059QF0KO0R)				
HYDROCHLORIC ACID (UNII: QTT17582CB)				
Packaging				
#	Item Code	Package Description	Marketing Start Date	Marketing End Date
1	NDC:0074-1044-01	1 in 1 CARTON	05/14/2025	
1		1 mL in 1 VIAL, SINGLE-DOSE; Type 0: Not a Combination Product		
Marketing Information				
Marketing Category		Application Number or Monograph Citation	Marketing Start Date	Marketing End Date
BLA		BLA761384	05/14/2025	

TELISOTUZUMAB VEDOTIN			
telisotuzumab vedotin injection, powder, lyophilized, for solution			
Product Information			
Product Type	HUMAN PRESCRIPTION DRUG	Item Code (Source)	NDC:0074-1055
Route of Administration	INTRAVENOUS		
Active Ingredient/Active Moiety			
Ingredient Name		Basis of Strength	Strength
TELISOTUZUMAB VEDOTIN (UNII: 976X9VXC3Z) (TELISOTUZUMAB VEDOTIN - UNII:976X9VXC3Z)		TELISOTUZUMAB VEDOTIN	100 mg in 1 mL
Inactive Ingredients			
Ingredient Name		Strength	

<b>HISTIDINE</b> (UNII: 4QD397987E)	2.33 mg in 1 mL
<b>SUCROSE</b> (UNII: C151H8M554)	70.0 mg in 1 mL
<b>POLYSORBATE 80</b> (UNII: 6OZP39ZG8H)	0.10 mg in 1 mL
<b>WATER</b> (UNII: 059QF0KO0R)	
<b>HYDROCHLORIC ACID</b> (UNII: QTT17582CB)	

### Packaging

#	Item Code	Package Description	Marketing Start Date	Marketing End Date
1	NDC:0074-1055-01	1 in 1 CARTON	05/14/2025	
1		1 mL in 1 VIAL, SINGLE-DOSE; Type 0: Not a Combination Product		

### Marketing Information

Marketing Category	Application Number or Monograph Citation	Marketing Start Date	Marketing End Date
BLA	BLA761384	05/14/2025	

**Labeler -** AbbVie Inc. (078458370)

Revised: 5/2025

AbbVie Inc.