

**CLINIQUE EVEN BETTER SKIN TONE CORRECTING BROAD SPECTRUM SPF 20-
octisalate, avobenzone, and octocrylene lotion**

Clinique Laboratories LLC

Disclaimer: Most OTC drugs are not reviewed and approved by FDA, however they may be marketed if they comply with applicable regulations and policies. FDA has not evaluated whether this product complies.

**CLINIQUE
EVEN BETTER SKIN TONE CORRECTING LOTION BROAD SPECTRUM SPF 20**

Drug Facts

Active ingredients

Octisalate 5.0%

Avobenzone 3.0%

Octocrylene 2.7%

Purpose

Sunscreen

Use

helps prevent sunburn

Warnings

For external use only

Do not use on damaged or broken skin

When using this product keep out of eyes. Rinse with water to remove.

Stop use and ask a doctor if rash occurs

Keep out of reach of children.

If product is swallowed, get medical help or contact a Poison Control Center right away.

Directions

For sunscreen use:

- apply liberally 15 minutes before sun exposure
- reapply at least every two hours
- use a water resistant sunscreen if swimming or sweating

• **Sun Protection Measures.**

Spending time in the sun increases your risk of skin cancer and early skin aging. To decrease this risk, regularly use a sunscreen with a Broad Spectrum SPF value of 15 or higher and other sun protection measures including:

- limit time in the sun, especially from 10 a.m.–2 p.m.
 - wear long-sleeved shirts, pants, hats and sunglasses
- children under 6 months of age: ask a doctor

Inactive ingredients

water • dimethicone • yeast extract • butyloctyl salicylate • peg-100 stearate • trisiloxane • butylene glycol • hdi/trimethylol hexyllactone crosspolymer • ascorbyl glucoside • coco-caprylate/caprato • polyethylene • glyceryl stearate • peg-6 • glycerin • olea europaea (olive) fruit extract • citrus grandis (grapefruit) peel extract • triticum vulgare (wheat bran) extract • laminaria saccharina extract • trametes versicolor extract • cucumis sativus (cucumber) fruit extract • pyrus malus (apple) fruit extract • scutellaria baicalensis root extract • punica granatum (pomegranate) fruit juice • oryza sativa (rice) bran extract • salicylic acid • caffeine • linoleic acid • cholesterol • acetyl glucosamine • sodium rna • dipotassium glycyrrhizate • steareth-21 • sucrose • tromethamine • di-c12-18 alkyl dimonium chloride • sodium hyaluronate • cetyl alcohol • ammonium acryloyldimethyltaurate/vp copolymer • lauryl peg-9 polydimethylsiloxyethyl dimethicone • caprylyl glycol • dimethiconol • trehalose • tocopheryl acetate • hexylene glycol • silica • sodium hydroxide • xanthan gum • disodium edta • phenoxyethanol [iln38585]

Other information

protect the product in this container from excessive heat and direct sun

© CLINIQUE LABS., DIST. N.Y., N.Y. 10022
N.Y., • LONDON W1K 3BQ • PARIS

PRINCIPAL DISPLAY PANEL - 50 ml Carton

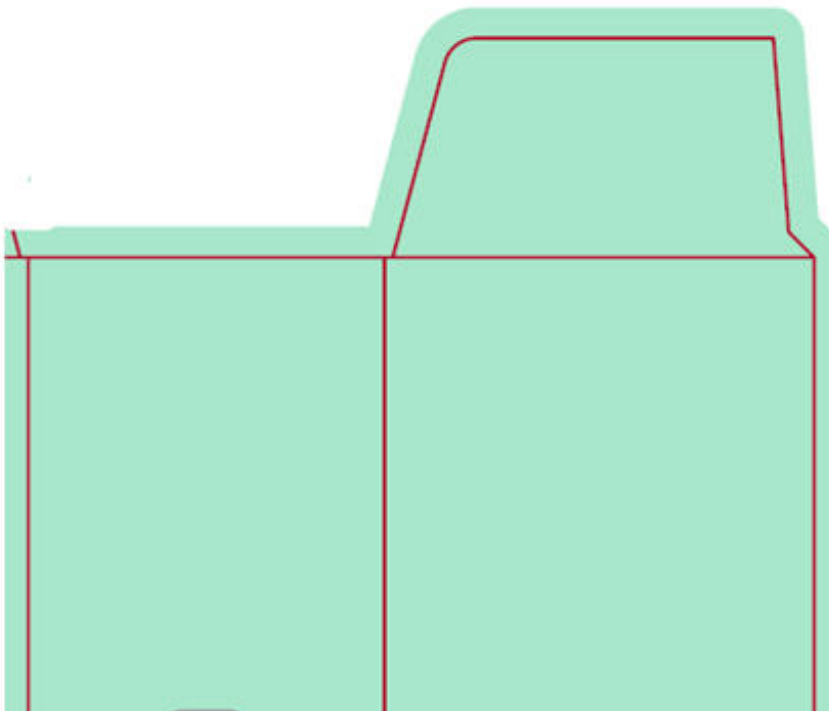
CLINIQUE

even better

skin tone
correcting lotion
broad spectrum
SPF 20

COMBINATION OILY TO OILY

1.7 FL.OZ.LIQ./50 ml e





CLINIQUE

even better

skin tone
correcting lotion
broad spectrum
SPF 20

COMBINATION OILY TO OILY

1.7 FL.OZ.LIQ./50 ml e

Allergy Tested.
100% Fragrance Free.
For All Skin Tones
Skin Types 3, 4

Imagine virtually erasing discolorations and dark spots gently, visibly, measurably, while protecting skin from future darkening with high-performance defense, UVA plus UVB. Within 4-6 weeks, this oil-free moisturizing lotion creates a more even, corrected skin tone. Strengthens skin's resistance to darkening with barrier repair. Instantly hydrates, brightens, clarifies. Apply A.M. For faster results, use with Even Better Clinical Dark Spot Corrector. See enclosure.



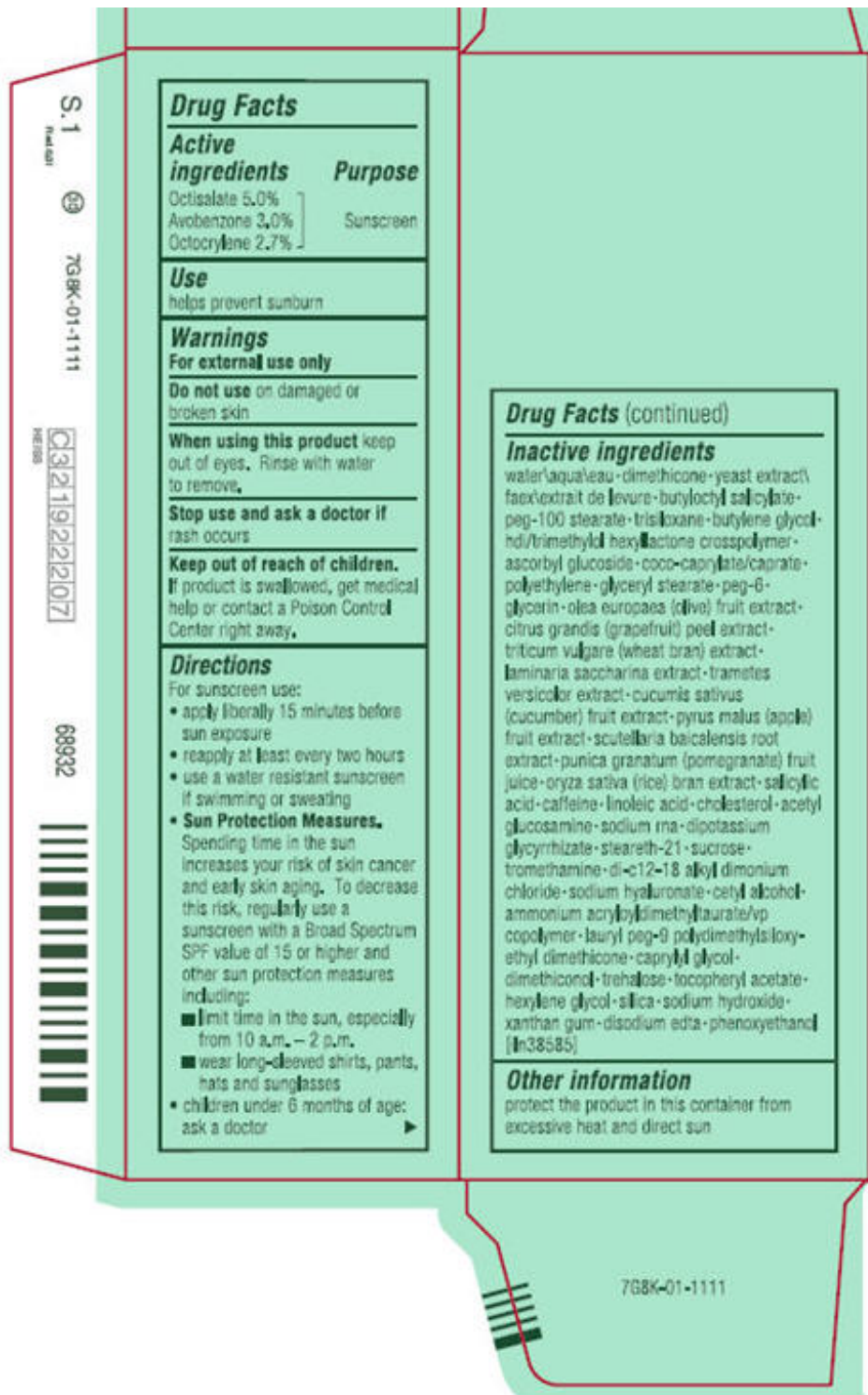
clinique.com

© CLINIQUE LABS., 65 ST. N.Y., N.Y., 10022
N.Y. • LONDON, W.K. 2RD • PARIS
MADE IN U.K.
708K



3, 4

COMBINATION OILY TO OILY
SKIN TYPES



CLINIQUE EVEN BETTER SKIN TONE CORRECTING BROAD SPECTRUM SPF 20

octisalate, avobenzone, and octocrylene lotion

Product Information

Product Type	HUMAN OTC DRUG	Item Code (Source)	NDC:49527-112
Route of Administration	TOPICAL		

Active Ingredient/Active Moiety		
Ingredient Name	Basis of Strength	Strength
OCTISALATE (UNII: 4X49Y0596W) (OCTISALATE - UNII:4X49Y0596W)	OCTISALATE	50.5 mg in 1 mL
AVOBENZONE (UNII: G63QQF2NOX) (AVOBENZONE - UNII:G63QQF2NOX)	AVOBENZONE	30.3 mg in 1 mL
OCTOCRYLENE (UNII: 5A68WGF6WM) (OCTOCRYLENE - UNII:5A68WGF6WM)	OCTOCRYLENE	27.3 mg in 1 mL

Inactive Ingredients	
Ingredient Name	Strength
WATER (UNII: 059QF0KO0R)	
DIMETHICONE (UNII: 92RU3N3Y1O)	
YEAST, UNSPECIFIED (UNII: 3NY3SM6B8U)	
BUTYLOCTYL SALICYLATE (UNII: 2EH13UN8D3)	
PEG-100 STEARATE (UNII: YD01N1999R)	
TRISILOXANE (UNII: 9G1ZW13R0G)	
BUTYLENE GLYCOL (UNII: 3XUS85K0RA)	
ASCORBYL GLUCOSIDE (UNII: 2V52R0NHXW)	
HIGH DENSITY POLYETHYLENE (UNII: UG00KM4WR7)	
GLYCERYL MONOSTEARATE (UNII: 230OU9XXE4)	
POLYETHYLENE GLYCOL 300 (UNII: 5655G9Y8AQ)	
GLYCERIN (UNII: PDC6A3C0OX)	
BLACK OLIVE (UNII: 2M6QWV94OC)	
CITRUS MAXIMA FRUIT RIND (UNII: 5NX3G75CA6)	
WHEAT BRAN (UNII: 6L966A1IMR)	
SACCHARINA LATISSIMA (UNII: 68CMP2MB55)	
CUCUMBER (UNII: YY7C30VXJT)	
APPLE (UNII: B423VGH5S9)	
SCUTELLARIA BAICALENSIS ROOT (UNII: 7J95K7ID2S)	
POMEGRANATE JUICE (UNII: 99S671U9KB)	
RICE BRAN (UNII: R60QEP13IC)	
SALICYLIC ACID (UNII: O414PZ4LPZ)	
CAFFEINE (UNII: 3G6A5W338E)	
LINOLEIC ACID (UNII: 9KJL21T0QJ)	
CHOLESTEROL (UNII: 97C5T2UQ7J)	
N-ACETYLGLUCOSAMINE (UNII: V956696549)	
GLYCYRRHIZINATE DIPO TASSIUM (UNII: CA2Y0FE3FX)	
STEARETH-21 (UNII: 53J3F32P58)	
SUCROSE (UNII: C151H8M554)	
TROMETHAMINE (UNII: 023C2WHX2V)	
HYALURONATE SODIUM (UNII: YSE9PPT4TH)	
CETYL ALCOHOL (UNII: 936JST6JCN)	
AMMONIUM ACRYLOYLDIMETHYLTAURATE/VP COPOLYMER (UNII: W59H9296ZG)	
CAPRYLYL GLYCOL (UNII: 00YIU5438U)	
TREHALOSE (UNII: B8WCK70T7I)	
.ALPHA.-TOCOPHEROL ACETATE (UNII: 9E8X80D2L0)	
HEXYLENE GLYCOL (UNII: KEH0A3F75J)	
SILICON DIOXIDE (UNII: ETJ7Z6XBU4)	
SODIUM HYDROXIDE (UNII: 55X04QC32I)	
XANTHAN GUM (UNII: TTV12P4NEE)	
EDETATE DISODIUM (UNII: 7FLD91C86K)	

Packaging

#	Item Code	Package Description	Marketing Start Date	Marketing End Date
1	NDC:49527-112-01	1 in 1 CARTON	11/01/2011	
1		50 mL in 1 TUBE; Type 0: Not a Combination Product		

Marketing Information

Marketing Category	Application Number or Monograph Citation	Marketing Start Date	Marketing End Date
OTC MONOGRAPH NOT FINAL	part352	11/01/2011	

Labeler - Clinique Laboratories LLC (044475127)**Establishment**

Name	Address	ID/FEI	Business Operations
ESTEE LAUDER COMPANY, THE		828534516	RELABEL(49527-112) , REPACK(49527-112)

Establishment

Name	Address	ID/FEI	Business Operations
ESTEE LAUDER COSMETICS, LTD		244669714	MANUFACTURE(49527-112)

Establishment

Name	Address	ID/FEI	Business Operations
ESTEE LAUDER COSMETICS, LTD.		202952982	MANUFACTURE(49527-112)

Establishment

Name	Address	ID/FEI	Business Operations
ESTEE LAUDER N.V.		370151326	MANUFACTURE(49527-112)

Establishment

Name	Address	ID/FEI	Business Operations
LEN-RON MANUFACTURING DIVISION OF ARAMIS INC		809771152	MANUFACTURE(49527-112)

Establishment

Name	Address	ID/FEI	Business Operations
NORTHTEC INC		943871157	RELABEL(49527-112) , REPACK(49527-112)

Establishment

Name	Address	ID/FEI	Business Operations
PADC 1		949264774	RELABEL(49527-112) , REPACK(49527-112)

Establishment

Name	Address	ID/FEI	Business Operations
------	---------	--------	---------------------

WHITMAN LABORATORIES, LTD.		216866277	MANUFACTURE(49527-112)
----------------------------	--	-----------	------------------------

Establishment

Name	Address	ID/FEI	Business Operations
ESTEE LAUDER COSMETICS, LTD		255175580	MANUFACTURE(49527-112)

Revised: 1/2020

Clinique Laboratories LLC