

INVELTYS- loteprednol etabonate suspension

Alcon Laboratories, Inc.

HIGHLIGHTS OF PRESCRIBING INFORMATION

These highlights do not include all the information needed to use INVELTYS® safely and effectively. See full prescribing information for INVELTYS.

INVELTYS (loteprednol etabonate ophthalmic suspension) 1%, for topical ophthalmic use
Initial U.S. Approval 1998

----- **INDICATIONS AND USAGE** -----

INVELTYS is a corticosteroid indicated for the treatment of post-operative inflammation and pain following ocular surgery. (1)

----- **DOSAGE AND ADMINISTRATION** -----

- Shake for one to two seconds before using. (2)
- Instill one to two drops of INVELTYS into the affected eye twice daily beginning the day after surgery and continuing throughout the first 2 weeks of the post-operative period. (2)

----- **DOSAGE FORMS AND STRENGTHS** -----

Ophthalmic suspension containing loteprednol etabonate 1% (10mg/mL). (3)

----- **CONTRAINDICATIONS** -----

INVELTYS is contraindicated in most viral diseases of the cornea and conjunctiva including epithelial herpes simplex keratitis (dendritic keratitis), vaccinia, and varicella, and also in mycobacterial infection of the eye and fungal diseases of ocular structures. (4)

----- **WARNINGS AND PRECAUTIONS** -----

- **Intraocular Pressure (IOP) Increase:** Prolonged use of corticosteroids may result in glaucoma with damage to the optic nerve, defects in visual acuity and fields of vision. If this product is used for 10 days or longer, IOP should be monitored. (5.1)
- **Cataracts:** Use of corticosteroids may result in posterior subcapsular cataract formation. (5.2)
- **Delayed Healing:** Use of steroids after cataract surgery may delay healing and increase the incidence of bleb formation. In those diseases causing thinning of the cornea or sclera, perforations have been known to occur with the use of topical steroids. The initial prescription and renewal of the medication order should be made by a physician only after examination of the patient with the aid of magnification such as slit lamp biomicroscopy and, where appropriate, fluorescein staining. (5.3)
- **Bacterial Infections:** Prolonged use of corticosteroids may suppress the host response and thus increase the hazard of secondary ocular infections. In acute purulent conditions, steroids may mask infection or enhance existing infection. (5.4)
- **Viral Infections:** Use of a corticosteroid medication in the treatment of patients with a history of herpes simplex requires great caution. Use of ocular steroids may prolong the course and may exacerbate the severity of many viral infections of the eye (including herpes simplex). (5.5)
- **Fungal Infections:** Fungal infections of the cornea are particularly prone to develop coincidentally with long-term local steroid application. Fungus invasion must be considered in any persistent corneal ulceration where a steroid has been used or is in use. (5.6)

----- **ADVERSE REACTIONS** -----

The most common adverse drug reactions were eye pain (1%) and posterior capsular opacification (1%). These reactions may have been the consequence of the surgical procedure. (6)

To report SUSPECTED ADVERSE REACTIONS, contact Alcon Laboratories, Inc. at 1-800-757-9195 or FDA at 1-800-FDA-1088 or www.fda.gov/medwatch.

Revised: 4/2026

FULL PRESCRIBING INFORMATION: CONTENTS*

1 INDICATIONS AND USAGE

2 DOSAGE AND ADMINISTRATION

2.1 Dosage Information

2.2 Administration Instructions

3 DOSAGE FORMS AND STRENGTHS

4 CONTRAINDICATIONS

5 WARNINGS AND PRECAUTIONS

5.1 Intraocular Pressure (IOP) Increase

5.2 Cataracts

5.3 Delayed Healing

5.4 Bacterial Infections

5.5 Viral Infections

5.6 Fungal Infections

5.7 Risk of Contamination

5.8 Contact Lens Wear

6 ADVERSE REACTIONS

6.1 Clinical Trials Experience

8 USE IN SPECIFIC POPULATIONS

8.1 Pregnancy

8.2 Lactation

8.4 Pediatric Use

8.5 Geriatric Use

11 DESCRIPTION

12 CLINICAL PHARMACOLOGY

12.1 Mechanism of Action

12.3 Pharmacokinetics

13 NONCLINICAL TOXICOLOGY

13.1 Carcinogenesis, Mutagenesis, Impairment of Fertility

14 CLINICAL STUDIES

16 HOW SUPPLIED/STORAGE AND HANDLING

* Sections or subsections omitted from the full prescribing information are not listed.

FULL PRESCRIBING INFORMATION

1 INDICATIONS AND USAGE

INVELTYS is a corticosteroid indicated for the treatment of post-operative inflammation and pain following ocular surgery.

2 DOSAGE AND ADMINISTRATION

2.1 Dosage Information

Instill one to two drops of **INVELTYS** into the affected eye twice daily beginning the day after surgery and continuing throughout the first 2 weeks of the post-operative period.

2.2 Administration Instructions

Instruct patient to wash hands well before each use.

Shake for one to two seconds before using.

If the patient is using other eye drops in addition to **INVELTYS**, advise the patient to wait at least 5 minutes between instillation of **INVELTYS** and other eye drops.

3 DOSAGE FORMS AND STRENGTHS

Ophthalmic suspension containing loteprednol etabonate 1% (10mg/mL).

4 CONTRAINDICATIONS

INVELTYS is contraindicated in most viral diseases of the cornea and conjunctiva including epithelial herpes simplex keratitis (dendritic keratitis), vaccinia, and varicella, and also in mycobacterial infection of the eye and fungal diseases of ocular structures.

5 WARNINGS AND PRECAUTIONS

5.1 Intraocular Pressure (IOP) Increase

Prolonged use of corticosteroids may result in glaucoma with damage to the optic nerve, as well as defects in visual acuity and fields of vision. Steroids should be used with caution in the presence of glaucoma. If this product is used for 10 days or longer, intraocular pressure should be monitored.

5.2 Cataracts

Use of corticosteroids may result in posterior subcapsular cataract formation.

5.3 Delayed Healing

Use of steroids after cataract surgery may delay healing and increase the incidence of bleb formation. In those diseases causing thinning of the cornea or sclera, perforations have been known to occur with the use of topical steroids. The initial prescription and renewal of the medication order should be made by a physician only after examination of the patient with the aid of magnification such as slit lamp biomicroscopy and, where appropriate, fluorescein staining.

5.4 Bacterial Infections

Prolonged use of corticosteroids may suppress the host response and thus increase the hazard of secondary ocular infections. In acute purulent conditions of the eye, steroids may mask infection or enhance existing infection.

5.5 Viral Infections

Use of corticosteroid medication in the treatment of patients with a history of herpes simplex requires great caution. Use of ocular steroids may prolong the course and may exacerbate the severity of many viral infections of the eye (including herpes simplex).

5.6 Fungal Infections

Fungal infections of the cornea are particularly prone to develop coincidentally with long-term local steroid application. Fungus invasion must be considered in any persistent corneal ulceration where a steroid has been used or is in use. Fungal cultures should be taken when appropriate.

5.7 Risk of Contamination

Do not to allow the dropper tip to touch any surface, as this may contaminate the suspension.

5.8 Contact Lens Wear

The preservative in **INVELTYS** may be absorbed by soft contact lenses. Contact lenses should be removed prior to instillation of **INVELTYS** and may be reinserted 15 minutes following administration.

6 ADVERSE REACTIONS

Adverse reactions associated with ophthalmic steroids include elevated intraocular pressure, which may be associated with infrequent optic nerve damage, visual acuity and field defects, posterior subcapsular cataract formation, delayed wound healing and secondary ocular infection from pathogens including herpes simplex, and perforation of the globe where there is thinning of the cornea or sclera.

6.1 Clinical Trials Experience

Because clinical trials are conducted under widely varying conditions, adverse reaction rates observed in the clinical trials of a drug cannot be directly compared to rates in the clinical trials of another drug and may not reflect the rates observed in practice.

The most common adverse drug reactions in the clinical trials with **INVELTYS** were eye pain and posterior capsular opacification, both reported in 1% of patients. These reactions may have been the consequence of the surgical procedure.

8 USE IN SPECIFIC POPULATIONS

8.1 Pregnancy

Risk Summary

INVELTYS is not absorbed systemically following topical ophthalmic administration and maternal use is not expected to result in fetal exposure to the drug.

8.2 Lactation

Risk Summary

INVELTYS is not absorbed systemically by the mother following topical ophthalmic administration, and breastfeeding is not expected to result in exposure of the child to **INVELTYS**.

8.4 Pediatric Use

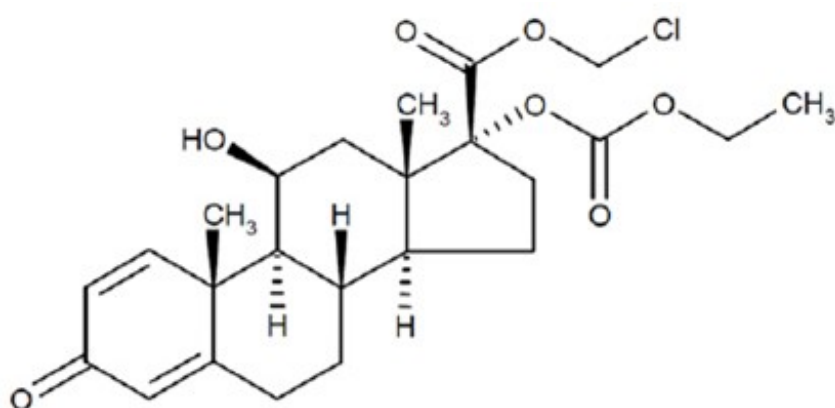
Safety and effectiveness in pediatric patients have not been established.

8.5 Geriatric Use

No overall differences in safety and effectiveness have been observed between elderly and younger patients.

11 DESCRIPTION

Loteprednol etabonate is a corticosteroid. Its chemical name is chloromethyl 17 α -[(ethoxycarbonyl)oxy]-11 β -hydroxy-3-oxoandrosta-1,4-diene-17 β -carboxylate. Its molecular formula is C₂₄H₃₁ClO₇ and its chemical structure is:



C₂₄H₃₁ClO₇
Mol. Wt. 467.0

INVELTYS (loteprednol etabonate ophthalmic suspension) 1% contains a sterile, topical anti-inflammatory corticosteroid for ophthalmic use. Each mL contains:

- ACTIVE: loteprednol etabonate 10 mg (1%)
- INACTIVES: glycerin, sodium citrate dihydrate, Poloxamer 407, sodium chloride, edetate disodium dihydrate, citric acid, and water for injection
- PRESERVATIVE: benzalkonium chloride 0.01%

12 CLINICAL PHARMACOLOGY

12.1 Mechanism of Action

Corticosteroids inhibit the inflammatory response to a variety of inciting agents and probably delay or slow healing. They inhibit the edema, fibrin deposition, capillary dilation, leukocyte migration, capillary proliferation, fibroblast proliferation, deposition of collagen, and scar formation associated with inflammation. While glucocorticoids are known to bind to and activate the glucocorticoid receptor, the molecular mechanisms involved in glucocorticoid/glucocorticoid receptor-dependent modulation of inflammation are not clearly established. However, corticosteroids are thought to inhibit prostaglandin

production through several independent mechanisms.

12.3 Pharmacokinetics

Loteprednol etabonate is lipid soluble and can penetrate into cells. Loteprednol etabonate is synthesized through structural modifications of prednisolone-related compounds so that it will undergo a predictable transformation to an inactive metabolite. Based upon *in vivo* and *in vitro* preclinical metabolism studies, loteprednol etabonate undergoes extensive metabolism to inactive carboxylic acid metabolites, PJ-91 and PJ-90.

Following twice-daily unilateral topical ocular dosing of **INVELTYS** for 14 days in healthy subjects, the plasma concentrations of loteprednol etabonate were below the limit of quantitation (1 ng/mL) at all timepoints.

13 NONCLINICAL TOXICOLOGY

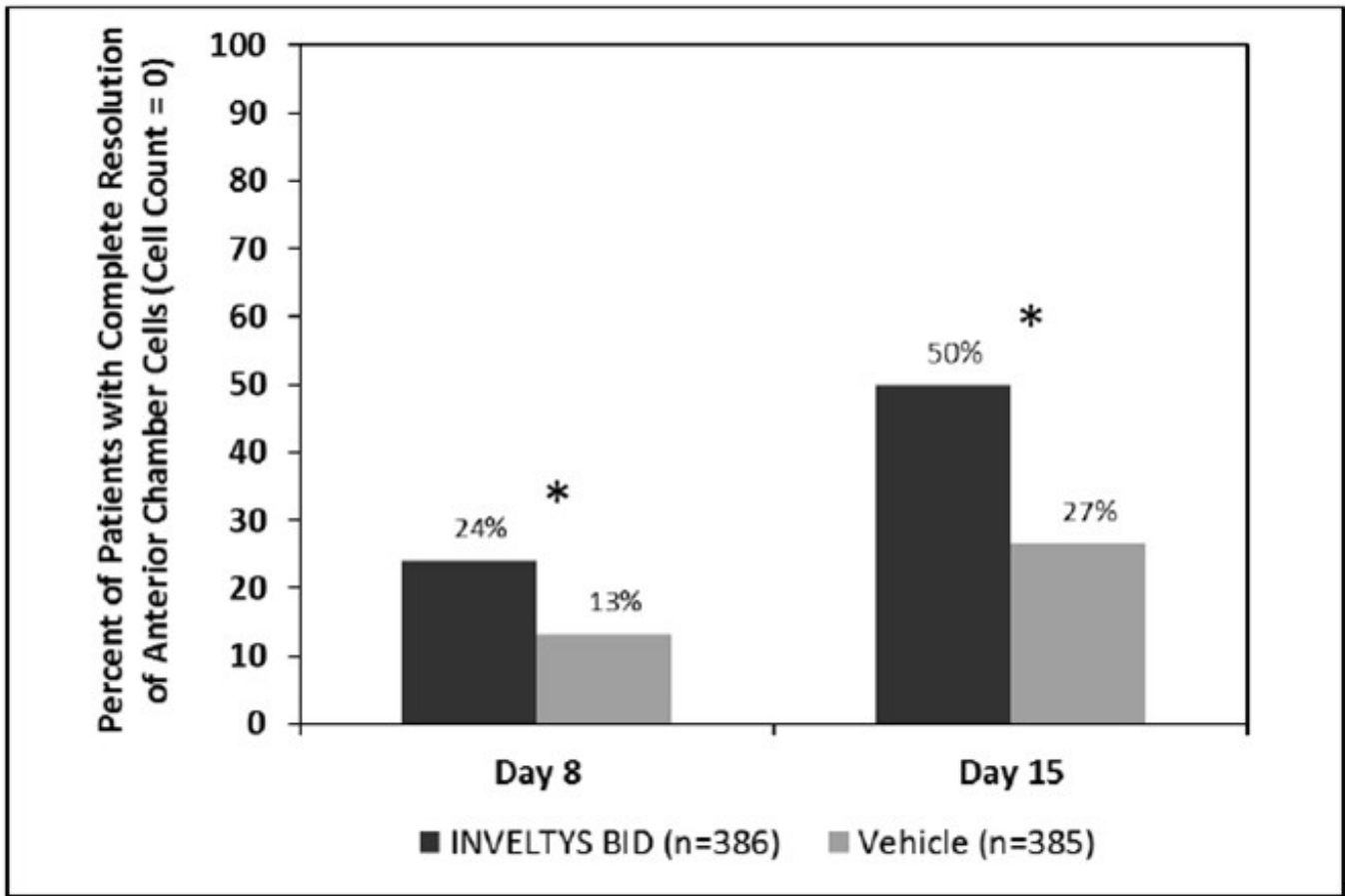
13.1 Carcinogenesis, Mutagenesis, Impairment of Fertility

Long-term animal studies have not been conducted to evaluate the carcinogenic potential of loteprednol etabonate. Loteprednol etabonate was not genotoxic *in vitro* in the Ames test, the mouse lymphoma thymidine kinase (tk) assay, or in a chromosome aberration test in human lymphocytes, or *in vivo* in the single dose mouse micronucleus assay.

14 CLINICAL STUDIES

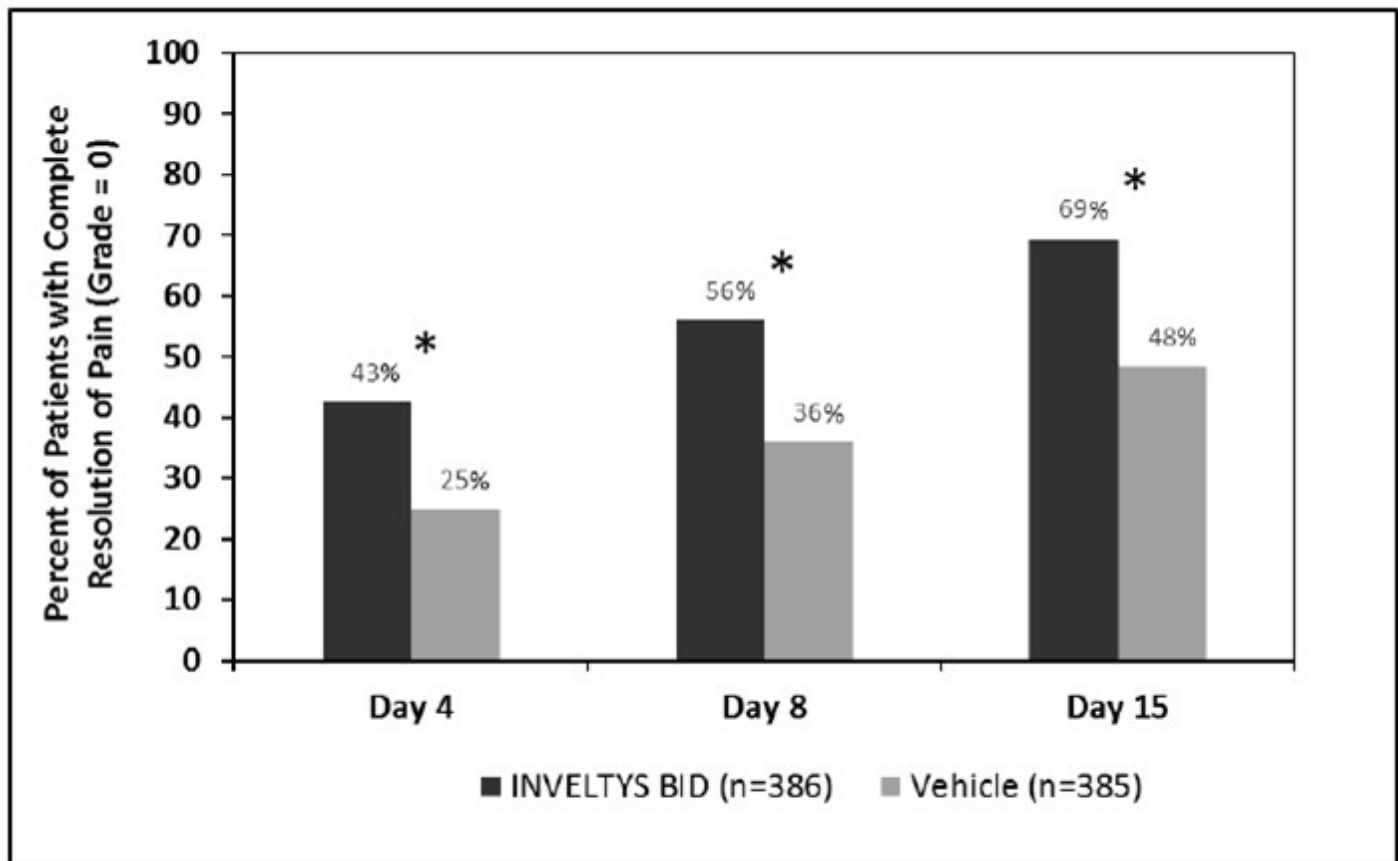
Clinical efficacy was evaluated in 2 multi-centered, randomized, double-masked, placebo-controlled trials in which patients with an anterior cell grade greater than or equal to "2" (a cell count of 6 or higher using a slit-lamp biomicroscope) after cataract surgery were assigned to **INVELTYS** or placebo (vehicle) following surgery (NCT # 02163824 and NCT # 02793817). One to two drops of **INVELTYS** or vehicle was self-administered twice a day for 14 days, beginning the day after surgery. Complete resolution of inflammation (a cell count of 0 maintained through day 15 without rescue medication) and complete resolution of pain (a patient-reported pain grade of 0 maintained through day 15 without rescue medication) was assessed 4, 8, and 15 days post-surgery. In the intent-to-treat analysis of both studies, a significant benefit was seen in the **INVELTYS**-treated group for complete resolution of ocular inflammation at Days 8 and 15, and complete resolution of pain at Days 4, 8, and 15, when compared with placebo. The consolidated clinical trial results are provided below.

Figure 1 Consolidated Clinical Trial Data: Percent of Patients with Complete Resolution of Anterior Chamber Cells (Cell Count = 0) at Days 8 and 15



* p-values < 0.01 for treatment comparisons

Figure 2 Consolidated Clinical Trial Data: Percent of Patients Who Were Pain Free at Days 4, 8, and 15



* p-values < 0.01 for treatment comparisons

16 HOW SUPPLIED/STORAGE AND HANDLING

INVELTYS (loteprednol etabonate ophthalmic suspension) 1% is a sterile ophthalmic suspension. It is supplied in a white low-density polyethylene bottle, with a natural low-density polyethylene tip, a pink polypropylene cap and a tamper-evident seal imprinted around the neck in the following size:

2.8 mL in a 5 mL bottle (NDC 0065-9307-04)

Storage and Handling

Do not use if tamper-evident seal is damaged

Store upright at 15°C to 25°C (59°F to 77°F). **Do not freeze.**

17 PATIENT COUNSELING INFORMATION

Administration

Instruct the patient to shake the bottle for one to two seconds before using. If the patient is using other eye drops in addition to INVELTYS, advise the patient to wait at least 5 minutes between instillation of INVELTYS and other eye drops.

Risk of Contamination

Advise patients to wash their hands well before each use. Advise patients not to allow the dropper tip to touch any surface, as this may contaminate the suspension.

Risk of Secondary Infection

Advise the patient to consult a physician if pain develops, or redness, itching, or inflammation becomes aggravated.

Contact Lens Wear

Advise patients that the preservative in **INVELTYS** may be absorbed by soft contact lenses. Contact lenses should be removed prior to instillation of **INVELTYS** and may be reinserted after 15 minutes following administration.

U.S. Pat.: www.alconpatents.com

Manufactured by:

Alcon Laboratories, Inc.
Fort Worth, TX 76134 USA

1-800-757-9195

Alcon.medinfo@alcon.com

© 2026 Alcon Inc.

INSTRUCTIONS FOR USE

INVELTYS [in-vel-tis]

(loteprednol etabonate ophthalmic suspension) 1%

for topical ophthalmic use

This Instructions for Use contains information on how to properly administer INVELTYS.

Important Information You Need to Know Before Using INVELTYS

- INVELTYS is for use in the eye only.
- Wash your hands before using INVELTYS.
- **Do not** use if the tamper-evident seal is not intact.
- **Do not** let the INVELTYS dropper tip touch your eye, fingers, or any other surfaces to avoid contamination or injury to your eye.
- Use INVELTYS exactly as your healthcare provider tells you to.
- If you are using INVELTYS with other eye (ophthalmic) medicines, you should wait at least 5 minutes between using INVELTYS and the other medicine.
- If you wear contact lenses, remove them before using INVELTYS.
- Put the pink cap back on INVELTYS after each use.

Follow Steps 1 to 6 each time you use INVELTYS.

Step Wash your hands well.

1:

Step Shake the INVELTYS bottle for 1 to 2 seconds (**See Figure A**)

2:



Figure A

Step Remove the pink cap from the top of the INVELTYS dropper by turning it **counterclockwise (See Figure B)**. Keep the pink cap. **Do not** let the INVELTYS dropper tip touch your eye, fingers, or any other surface.

3:



Figure B

Step Turn the INVELTYS bottle upside down (**See Figure C**).

4:



Figure C

Step 5: Tilt your head back. Hold the bottle directly above your affected eye. Squeeze the middle of the INVELTYS bottle gently to put 1 to 2 drops (follow your doctor's recommendation) into the affected eye (**See Figure D**).



Figure D

Step 6: Place the pink cap back onto the INVELTYS bottle and tighten by turning clockwise (**See Figure E**).



Figure E

If you use contact lenses, wait for 15 minutes before placing them back in.

How should I store INVELTYS?

- Store INVELTYS upright at 59°F to 77°F (15°C to 25°C).
- **Do not** freeze

Keep INVELTYS and all medicines out of the reach of children.

This Instructions for Use has been approved by the U.S. Food and Drug Administration.

Manufactured by:

Alcon Laboratories, Inc.
Fort Worth, TX 76134 USA

Revised: 04/2026

300074560-1125

PRINCIPAL DISPLAY PANEL - 2.8 mL Bottle Carton

NDC 0065-9307-04

Rx Only

INVELTYS®

(loteprednol etabonate ophthalmic suspension)1%

Sterile

2.8 mL

NDC 0065-9307-04

Rx Only

INVELTYS®

(loteprednol etabonate
ophthalmic suspension) 1%

FOR TOPICAL APPLICATION IN THE EYE.

Sterile

2.8 mL

Alcon

Dosage: See Prescribing
Information.

SHAKE FOR 1 to 2 SECONDS

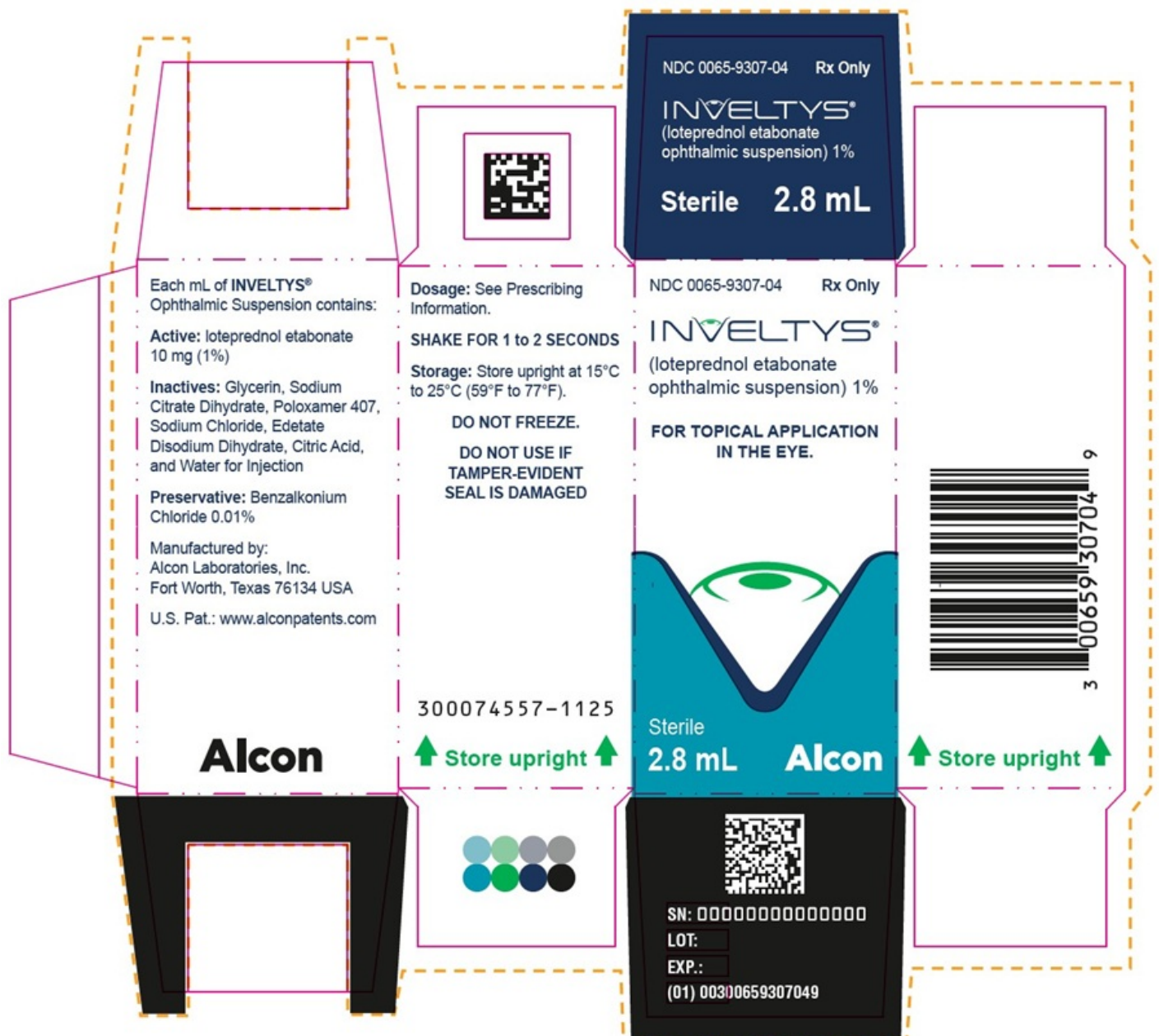
Storage: Store upright at 15°C to 25°C (59°F to 77°F).

DO NOT FREEZE.

**DO NOT USE IF
TAMPER-EVIDENT
SEAL IS DAMAGED**

300074557-1125

Store upright



INVELTYS®
(loteprednol etabonate
ophthalmic suspension) 1%

NDC 0065-9307-04 **Rx Only**

2.8mL

Sterile

Alcon Laboratories, Inc.
Fort Worth, Texas 76134 USA

300074563-1125



PRINCIPAL DISPLAY PANEL - 2.8 mL Bottle Carton

NDC 0065-9307-04
Rx Only

INVELTYS®

(loteprednol etabonate ophthalmic suspension)1%

Sterile

2.8 mL

NDC 0065-9307-05
Rx Only

INVELTYS®
(loteprednol etabonate
ophthalmic suspension) 1%

**FOR TOPICAL
APPLICATION IN THE EYE.**

PROFESSIONAL SAMPLE

Not for Retail Sale

Sterile
2.8 mL

Alcon

Dosage: See Prescribing
Information.

SHAKE FOR 1 to 2 SECONDS

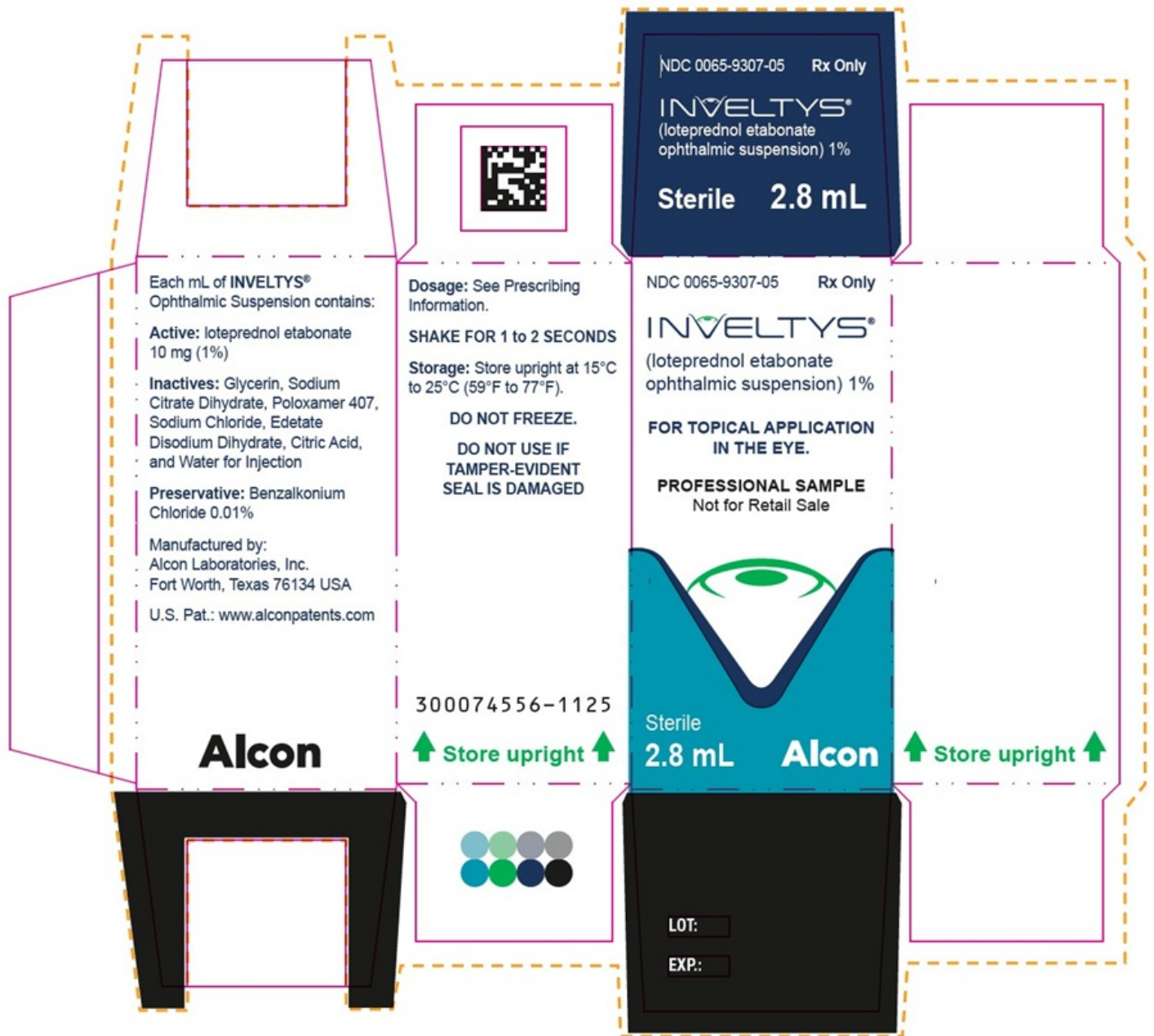
Storage: Store upright at
15°C to 25°C (59°F to 77°F).

DO NOT FREEZE.

**DO NOT USE IF
TAMPER-EVIDENT
SEAL IS DAMAGED**

300074556-1125

Store upright



INVELTYS®
(loteprednol etabonate
ophthalmic suspension) 1%

NDC 0065-9307-05

Sample

Rx Only

2.8mL

Sterile

Alcon Laboratories, Inc.

Fort Worth, Texas 76134 USA
300074565-1125



INVELTYS

loteprednol etabonate suspension

Product Information

Product Type	HUMAN PRESCRIPTION DRUG	Item Code (Source)	NDC:0065-9307
Route of Administration	OPHTHALMIC		

Active Ingredient/Active Moiety

Ingredient Name	Basis of Strength	Strength
Loteprednol Etabonate (UNII: YEH1EZ96K6) (Loteprednol - UNII:Z8CBU6KR16)	Loteprednol Etabonate	10 mg in 1 mL

Inactive Ingredients

Ingredient Name	Strength
Glycerin (UNII: PDC6A3C00X)	
Trisodium Citrate Dihydrate (UNII: B22547B95K)	
Sodium Chloride (UNII: 451W47IQ8X)	
Edetate Disodium (UNII: 7FLD91C86K)	
Citric Acid Monohydrate (UNII: 2968PHW8QP)	
Water (UNII: 059QF0KO0R)	
Benzalkonium Chloride (UNII: F5UM2KM3W7)	
Anhydrous Citric Acid (UNII: XF417D3PSL)	
Poloxamer 407 (UNII: TUF2IVW3M2)	

Packaging

#	Item Code	Package Description	Marketing Start Date	Marketing End Date
1	NDC:0065-9307-04	1 in 1 CARTON	04/16/2026	
1		2.8 mL in 1 BOTTLE, DROPPER; Type 0: Not a Combination Product		

2	NDC:0065-9307-05	1 in 1 CARTON	04/16/2026	
2		2.8 mL in 1 BOTTLE, DROPPER; Type 0: Not a Combination Product		
Marketing Information				
Marketing Category	Application Number or Monograph Citation		Marketing Start Date	Marketing End Date
NDA	NDA210565		04/16/2026	

Labeler - Alcon Laboratories, Inc. (008018525)

Establishment			
Name	Address	ID/FEI	Business Operations
Alcon Research LLC		007672236	manufacture(0065-9307)

Establishment			
Name	Address	ID/FEI	Business Operations
Industriale Chimica SRL		436796809	api manufacture(0065-9307)

Revised: 4/2026

Alcon Laboratories, Inc.