

# CARISOPRODOL- carisoprodol tablet

## Westminster Pharmaceuticals, LLC

-----

### HIGHLIGHTS OF PRESCRIBING INFORMATION

These highlights do not include all the information needed to use CARISOPRODOL TABLETS safely and effectively. See full prescribing information for CARISOPRODOL TABLETS.

**CARISOPRODOL tablets, for oral use, C-IV**

**Initial U.S. Approval: 1959**

### INDICATIONS AND USAGE

Carisoprodol Tablet is a muscle relaxant indicated for the relief of discomfort associated with acute, painful musculoskeletal conditions in adults. (1)

#### Limitation of Use

Should only be used for acute treatment periods up to two or three weeks (1)

### DOSAGE AND ADMINISTRATION

- Recommended dose is 250 mg to 350 mg three times a day and at bedtime. (2)

### DOSAGE FORMS AND STRENGTHS

Tablets: 250 mg (3)

### CONTRAINDICATIONS

- Acute intermittent porphyria (4)
- Hypersensitivity reactions to a carbamate such as meprobamate (4)

### WARNINGS AND PRECAUTIONS

- Due to sedative properties, may impair ability to perform hazardous tasks such as driving or operating machinery (5.1)
- Additive sedative effects when used with other CNS depressants including alcohol (5.1)
- Cases of abuse, dependence and withdrawal (5.2, 9.2, 9.3)
- Seizures (5.3)

### ADVERSE REACTIONS

Most common adverse reactions (incidence > 2%) are drowsiness, dizziness, and headache (6.1)

**To report SUSPECTED ADVERSE REACTIONS, contact Westminster Pharmaceuticals, LLC at 1-844-221-7294 or FDA at 1-800-FDA-1088 or [www.fda.gov/medwatch](http://www.fda.gov/medwatch).**

### DRUG INTERACTIONS

CNS depressants (e.g., alcohol, benzodiazepines, opioids, tricyclic antidepressants) - additive sedative effects (5.1, 7.1)

**See 17 for PATIENT COUNSELING INFORMATION.**

**Revised: 7/2025**

---

## FULL PRESCRIBING INFORMATION: CONTENTS\*

### 1 INDICATIONS AND USAGE

### 2 DOSAGE AND ADMINISTRATION

### 3 DOSAGE FORMS AND STRENGTHS

### 4 CONTRAINDICATIONS

### 5 WARNINGS AND PRECAUTIONS

#### 5.1 Sedation

5.2 Abuse, Dependence, and Withdrawal

5.3 Seizures

## **6 ADVERSE REACTIONS**

6.1 Clinical Studies Experience

6.2 Post-marketing Experience

## **7 DRUG INTERACTIONS**

7.1 CNS Depressants

7.2 CYP2C19 Inhibitors and Inducers

## **8 USE IN SPECIFIC POPULATIONS**

8.1 Pregnancy

8.2 Lactation

8.4 Pediatric Use

8.5 Geriatric Use

8.6 Renal Impairment

8.7 Hepatic Impairment

8.8 Patients with Reduced CYP2C19 Activity

## **9 DRUG ABUSE AND DEPENDENCE**

9.1 Controlled Substance

9.2 Abuse

9.3 Dependence

## **10 OVERDOSAGE**

## **11 DESCRIPTION**

## **12 CLINICAL PHARMACOLOGY**

12.1 Mechanism of Action

12.2 Pharmacodynamics

12.3 Pharmacokinetics

## **13 NONCLINICAL TOXICOLOGY**

13.1 Carcinogenesis, Mutagenesis, Impairment of Fertility

## **14 CLINICAL STUDIES**

## **16 HOW SUPPLIED/STORAGE AND HANDLING**

## **17 PATIENT COUNSELING INFORMATION**

\* Sections or subsections omitted from the full prescribing information are not listed.

---

## **FULL PRESCRIBING INFORMATION**

### **1 INDICATIONS AND USAGE**

Carisoprodol Tablets are indicated for the relief of discomfort associated with acute, painful musculoskeletal conditions in adults.

#### Limitation of Use

Carisoprodol Tablets should only be used for short periods (up to two or three weeks) because adequate evidence of effectiveness for more prolonged use has not been established and because acute, painful musculoskeletal conditions are generally of short duration [see *Dosage and Administration* (2)].

## **2 DOSAGE AND ADMINISTRATION**

The recommended dose of Carisoprodol Tablets is 250 mg to 350 mg three times a day and at bedtime. The recommended maximum duration of Carisoprodol Tablets use is up to two or three weeks.

## **3 DOSAGE FORMS AND STRENGTHS**

250 mg Tablets: Round, white to off white tablets, debossed with "NC" on one side and "250" on other side.

350 mg Tablets: Round, white to off white tablets, debossed with "NC" on one side and "350" on other side.

## **4 CONTRAINDICATIONS**

Carisoprodol Tablets are contraindicated in patients with a history of acute intermittent porphyria or a hypersensitivity reaction to a carbamate such as meprobamate.

## **5 WARNINGS AND PRECAUTIONS**

### **5.1 Sedation**

Carisoprodol Tablets have sedative properties (in the low back pain trials, 13% to 17% of patients who received Carisoprodol Tablets experienced sedation compared to 6% of patients who received placebo) [see *ADVERSE REACTIONS (6.1)*] and may impair the mental and/or physical abilities required for the performance of potentially hazardous tasks such as driving a motor vehicle or operating machinery. There have been post-marketing reports of motor vehicle accidents associated with the use of Carisoprodol Tablets.

Since the sedative effects of Carisoprodol Tablets and other CNS depressants (e.g., alcohol, benzodiazepines, opioids, tricyclic antidepressants) may be additive, appropriate caution should be exercised with patients who take more than one of these CNS depressants simultaneously.

### **5.2 Abuse, Dependence, and Withdrawal**

Carisoprodol, the active ingredient in Carisoprodol Tablets, has been subject to abuse, dependence, and withdrawal, misuse and criminal diversion. [see *Drug Abuse and Dependence (9.1, 9.2, 9.3)*]. Abuse of Carisoprodol Tablets poses a risk of overdose which may lead to death, CNS and respiratory depression, hypotension, seizures, and other disorders [see *Overdosage (10)*].

Post-marketing experience cases of carisoprodol abuse and dependence have been reported in patients with prolonged use and a history of drug abuse. Although most of these patients took other drugs of abuse, some patients solely abused carisoprodol. Withdrawal symptoms have been reported following abrupt cessation of Carisoprodol Tablets after prolonged use. Reported withdrawal symptoms included insomnia, vomiting, abdominal cramps, headache, tremors, muscle twitching, ataxia, hallucinations, and psychosis. One of carisoprodol's metabolites, meprobamate (a

controlled substance), may also cause dependence [see *Clinical Pharmacology* (12.3)].

To reduce the risk of Carisoprodol Tablets abuse assess the risk of abuse prior to prescribing. After prescribing, limit the length of treatment to three weeks for the relief of acute musculoskeletal discomfort, keep careful prescription records, monitor for signs of abuse and overdose, and educate patients and their families about abuse and on proper storage and disposal.

### 5.3 Seizures

There have been post-marketing reports of seizures in patients who received Carisoprodol Tablets. Most of these cases have occurred in the setting of multiple drug overdoses (including drugs of abuse, illegal drugs, and alcohol) [see *Overdosage* (10)].

## 6 ADVERSE REACTIONS

### 6.1 Clinical Studies Experience

Because clinical studies are conducted under widely varying conditions, adverse reaction rates observed in clinical studies of a drug cannot be directly compared to rates in the clinical studies of another drug and may not reflect rates observed in practice.

The data described below are based on 1387 patients pooled from two double blind, randomized, multicenter, placebo controlled, one-week trials in adult patients with acute, mechanical, lower back pain [see *Clinical Studies* (14)]. In these studies, patients were treated with 250 mg of Carisoprodol Tablets, 350 mg of Carisoprodol Tablets, or placebo three times a day and at bedtime for seven days. The mean age was about 41 years old with 54% females and 46% males and 74% Caucasian, 16% Black, 9% Asian, and 2% other.

There were no deaths and there were no serious adverse reactions in these two trials. In these two studies, 2.7%, 2%, and 5.4%, of patients treated with placebo, 250 mg of Carisoprodol Tablets, and 350 mg of Carisoprodol Tablets, respectively, discontinued due to adverse events; and 0.5%, 0.5%, and 1.8% of patients treated with placebo, 250 mg of Carisoprodol Tablets, and 350 mg of Carisoprodol Tablets, respectively, discontinued due to central nervous system adverse reactions.

Table 1 displays adverse reactions reported with frequencies greater than 2% and more frequently than placebo in patients treated with Carisoprodol Tablets in the two trials described above.

**Table 1. Patients with Adverse Reactions in Controlled Studies**

<b>Adverse Reaction</b>	<b>Placebo (n=560) n (%)</b>	<b>Carisoprodol Tablets 250 mg (n=548) n (%)</b>	<b>Carisoprodol Tablets 350 mg (n=279) n (%)</b>
Drowsiness	31 (6)	73 (13)	47 (17)
Dizziness	11 (2)	43 (8)	19 (7)
Headache	11 (2)	26 (5)	9 (3)

### 6.2 Post-marketing Experience

The following events have been reported during postapproval use of Carisoprodol Tablets. Because these reactions are reported voluntarily from a population of uncertain size, it is not always possible to reliably estimate their frequency or establish a causal relationship to drug exposure.

*Cardiovascular:* Tachycardia, postural hypotension, and facial flushing [see *Overdosage (10)*].

*Central Nervous System:* Drowsiness, dizziness, vertigo, ataxia, tremor, agitation, irritability, headache, depressive reactions, syncope, insomnia, and seizures [see *Overdosage (10)*].

*Gastrointestinal:* Nausea, vomiting, and epigastric discomfort.

*Hematologic:* Leukopenia, pancytopenia

## **7 DRUG INTERACTIONS**

### **7.1 CNS Depressants**

The sedative effects of Carisoprodol Tablets and other CNS depressants (e.g., alcohol, benzodiazepines, opioids, tricyclic antidepressants) may be additive. Therefore, caution should be exercised with patients who take more than one of these CNS depressants simultaneously. Concomitant use of Carisoprodol Tablets and meprobamate, a metabolite of Carisoprodol Tablets, is not recommended [see *Warnings and Precautions (5.1)*].

### **7.2 CYP2C19 Inhibitors and Inducers**

Carisoprodol is metabolized in the liver by CYP2C19 to form meprobamate [see *Clinical Pharmacology (12.3)*]. Co-administration of CYP2C19 inhibitors, such as omeprazole or fluvoxamine, with Carisoprodol Tablets could result in increased exposure of carisoprodol and decreased exposure of meprobamate. Co-administration of CYP2C19 inducers, such as rifampin or St. John's Wort, with Carisoprodol Tablets could result in decreased exposure of carisoprodol and increased exposure of meprobamate. Low dose aspirin also showed an induction effect on CYP2C19. The full pharmacological impact of these potential alterations of exposures in terms of either efficacy or safety of Carisoprodol Tablets is unknown.

## **8 USE IN SPECIFIC POPULATIONS**

### **8.1 Pregnancy**

#### Risk Summary

Data over many decades of carisoprodol use in pregnancy have not identified a drug-associated risk of major birth defects, miscarriage, or other adverse maternal or fetal outcomes. Data on meprobamate, the primary metabolite of carisoprodol, also do not show a consistent association between maternal use of meprobamate and an increased risk of major birth defects (*see Data*).

In a published animal reproduction study, pregnant mice administered carisoprodol orally at 2.6- and 4.1-times the maximum recommended human dose ([MRHD] of 1400

mg per day [350 mg QID] based on body surface area [BSA] comparison) from gestation through weaning resulted in reduced fetal weights, postnatal weight gain, and postnatal survival (see *Data*).

The estimated background risk of major birth defects and miscarriage for the indicated population is unknown. All pregnancies have a background risk of birth defect, loss, or other adverse outcomes. In the U.S. general population, the estimated background risk of major birth defects and miscarriage in clinically recognized pregnancies is 2 to 4% and 15 to 20%, respectively.

## Data

### *Human Data*

Retrospective case-control and cohort studies of meprobamate use during the first trimester of pregnancy have not consistently identified an increased risk or pattern of major birth defects. For children exposed to meprobamate in-utero, one study found no adverse effect on mental or motor development or IQ scores.

### *Animal Data*

Embryofetal development studies in animals have not been completed. In a published pre- and post-natal development animal study, pregnant mice administered carisoprodol orally at 300, 750, or 1200 mg/kg/day (approximately 1-, 2.6-, and 4.1-times the MRHD based on BSA comparison) from 7-days prior to gestation through birth and from lactation through weaning resulted in reduced fetal weights, postnatal weight gain, and postnatal survival at 2.6- and 4.1-times the MRHD.

## **8.2 Lactation**

### Risk Summary

Data from published literature report that carisoprodol and its metabolite, meprobamate, are present in breastmilk. There are no data on the effect of carisoprodol on milk production. There is one report of sedation in an infant who was breastfed by a mother taking carisoprodol (see *Clinical Considerations*). Because there have been no consistent reports of adverse events in breastfed infants over decades of use, the developmental and health benefits of breastfeeding should be considered along with the mother's clinical need for Carisoprodol Tablets and any potential adverse effects on the breastfed infant from Carisoprodol Tablets or from the underlying maternal condition.

### Clinical Considerations

Infants exposed to Carisoprodol Tablets through breast milk should be monitored for sedation.

## **8.4 Pediatric Use**

The efficacy, safety, and pharmacokinetics of Carisoprodol Tablets in pediatric patients less than 16 years of age have not been established.

## **8.5 Geriatric Use**

The efficacy, safety, and pharmacokinetics of Carisoprodol Tablets in patients over 65 years old have not been established.

## 8.6 Renal Impairment

The safety and pharmacokinetics of Carisoprodol Tablets in patients with renal impairment have not been evaluated. Since Carisoprodol Tablets is excreted by the kidney, caution should be exercised if Carisoprodol Tablets is administered to patients with impaired renal function. Carisoprodol is dialyzable by hemodialysis and peritoneal dialysis.

## 8.7 Hepatic Impairment

The safety and pharmacokinetics of Carisoprodol Tablets in patients with hepatic impairment have not been evaluated. Since Carisoprodol Tablets is metabolized in the liver, caution should be exercised if Carisoprodol Tablets is administered to patients with impaired hepatic function.

## 8.8 Patients with Reduced CYP2C19 Activity

Patients with reduced CYP2C19 activity have higher exposure to carisoprodol. Therefore, caution should be exercised in administration of Carisoprodol Tablets to these patients [see *Clinical Pharmacology* (12.3)].

# 9 DRUG ABUSE AND DEPENDENCE

## 9.1 Controlled Substance

Carisoprodol Tablets contain carisoprodol, a Schedule IV controlled substance. Carisoprodol has been subject to abuse, misuse, and criminal diversion for nontherapeutic use [see *Warnings and Precautions* (5.2)].

## 9.2 Abuse

Abuse of carisoprodol poses a risk of overdose which may lead to death, CNS and respiratory depression, hypotension, seizures and other disorders [see *Warnings and Precautions* (5.2) and *Overdosage* (10)]. Patients at high risk of Carisoprodol Tablets abuse may include those with prolonged use of carisoprodol, with a history of drug abuse, or those who use Carisoprodol Tablets in combination with other abused drugs.

Prescription drug abuse is the intentional non-therapeutic use of a drug, even once, for its rewarding psychological effects. Drug addiction, which develops after repeated drug abuse, is characterized by a strong desire to take a drug despite harmful consequences, difficulty in controlling its use, giving a higher priority to drug use than to obligations, increased tolerance, and sometimes physical withdrawal. Drug abuse and drug addiction are separate and distinct from physical dependence and tolerance (for example, abuse or addiction may not be accompanied by tolerance or physical dependence) [see *Drug Abuse and Dependence* (9.3)].

## 9.3 Dependence

Tolerance is when a patient's reaction to a specific dosage and concentration is progressively reduced in the absence of disease progression, requiring an increase in the dosage to maintain the same. Physical dependence is characterized by withdrawal symptoms after abrupt discontinuation or a significant dose reduction of a drug. Both

tolerance and physical dependence have been reported with the prolonged use of Carisoprodol Tablets. Reported withdrawal symptoms with Carisoprodol Tablets include insomnia, vomiting, abdominal cramps, headache, tremors, muscle twitching, anxiety, ataxia, hallucinations, and psychosis. Instruct patients taking large doses of Carisoprodol Tablets or those taking the drug for a prolonged time to not abruptly stop Carisoprodol Tablets [see *Warnings and Precautions* (5.2)].

## 10 OVERDOSAGE

### Clinical Presentation

Overdosage of Carisoprodol Tablets commonly produces CNS depression. Death, coma, respiratory depression, hypotension, seizures, delirium, hallucinations, dystonic reactions, nystagmus, blurred vision, mydriasis, euphoria, muscular incoordination, rigidity, and/or headache have been reported with Carisoprodol Tablets overdosage. Serotonin syndrome has been reported with carisoprodol intoxication. Many of the carisoprodol overdoses have occurred in the setting of multiple drug overdoses (including drugs of abuse, illegal drugs, and alcohol). The effects of an overdose of carisoprodol and other CNS depressants (e.g., alcohol, benzodiazepines, opioids, tricyclic antidepressants) can be additive even when one of the drugs has been taken in the recommended dosage. Fatal accidental and non-accidental overdoses of Carisoprodol Tablets have been reported alone or in combination with CNS depressants.

### Treatment of Overdosage

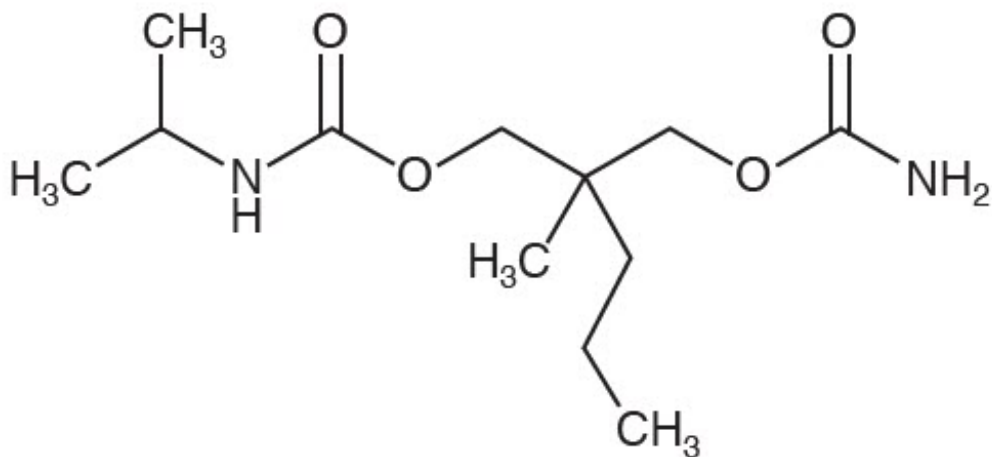
Basic life support measures should be instituted as dictated by the clinical presentation of the Carisoprodol Tablets overdose. Vomiting should not be induced because of the risk of CNS and respiratory depression, and subsequent aspiration. Circulatory support should be administered with volume infusion and vasopressor agents if needed. Seizures should be treated with intravenous benzodiazepines and the reoccurrence of seizures may be treated with phenobarbital. In cases of severe CNS depression, airway protective reflexes may be compromised and tracheal intubation should be considered for airway protection and respiratory support.

For decontamination in cases of severe toxicity, activated charcoal should be considered in a hospital setting in patients with large overdoses who present early and are not demonstrating CNS depression and can protect their airway. For more information on the management of an overdose of Carisoprodol Tablets, **contact a Poison Control Center**.

## 11 DESCRIPTION

Carisoprodol Tablets, USP are available as 250 mg round, white to off-white tablets. Carisoprodol is a white, crystalline powder, having a mild, characteristic odor and a bitter taste. It is slightly soluble in water; freely soluble in alcohol, in chloroform, and in acetone; and its solubility is practically independent of pH. Carisoprodol is present as a racemic mixture. Chemically, carisoprodol is (±)-2-Methyl-2-propyl-1,3-propanediol carbamate isopropylcarbamate and the molecular formula is C<sub>12</sub>H<sub>24</sub>N<sub>2</sub>O<sub>4</sub>, with a molecular weight of 260.33. The structural formula is:





Other ingredients in the Carisoprodol Tablets drug product include colloidal silicon dioxide, croscarmellose sodium, hypromellose, magnesium stearate, silicified microcrystalline cellulose and sodium lauryl sulphate.

## 12 CLINICAL PHARMACOLOGY

### 12.1 Mechanism of Action

The mechanism of action of carisoprodol in relieving discomfort associated with acute painful musculoskeletal conditions has not been clearly identified. In animal studies, muscle relaxation induced by carisoprodol is associated with altered interneuronal activity in the spinal cord and in the descending reticular formation of the brain.

### 12.2 Pharmacodynamics

Carisoprodol is a centrally acting skeletal muscle relaxant that does not directly relax skeletal muscles.

A metabolite of carisoprodol, meprobamate, has anxiolytic and sedative properties. The degree to which these properties of meprobamate contribute to the safety and efficacy of Carisoprodol Tablets is unknown.

### 12.3 Pharmacokinetics

#### Absorption

The pharmacokinetics of carisoprodol and its metabolite meprobamate were studied in a crossover study of 24 healthy subjects (12 male and 12 female) who received single doses of 250 mg and 350 mg Carisoprodol Tablets (see Table 2). The exposure of carisoprodol and meprobamate was dose proportional between the 250 mg and 350 mg doses. The C<sub>max</sub> of meprobamate was  $2.5 \pm 0.5$  µg/mL (mean  $\pm$  SD) after administration of a single 350 mg dose of Carisoprodol Tablets, which is approximately 30% of the C<sub>max</sub> of meprobamate (approximately 8 µg / mL) after administration of a single 400 mg dose of meprobamate.

**Table 2. Pharmacokinetic Parameters of Carisoprodol and**

### Meprobamate (Mean $\pm$ SD, n=24)

	250 mg Carisoprodol Tablets	350 mg Carisoprodol Tablets
<b>Carisoprodol</b>		
<b>C<sub>max</sub> (µg/mL)</b>	1.2 $\pm$ 0.5	1.8 $\pm$ 1.0
<b>AUC<sub>inf</sub> (µg*hr/mL)</b>	4.5 $\pm$ 3.1	7.0 $\pm$ 5.0
<b>T<sub>max</sub> (hr)</b>	1.5 $\pm$ 0.8	1.7 $\pm$ 0.8
<b>T<sub>1/2</sub> (hr)</b>	1.7 $\pm$ 0.5	2.0 $\pm$ 0.5
<b>Meprobamate</b>		
<b>C<sub>max</sub> (µg/mL)</b>	1.8 $\pm$ 0.3	2.5 $\pm$ 0.5
<b>AUC<sub>inf</sub> (µg*hr/mL)</b>	32 $\pm$ 6.2	46 $\pm$ 9.0
<b>T<sub>max</sub> (hr)</b>	3.6 $\pm$ 1.7	4.5 $\pm$ 1.9
<b>T<sub>1/2</sub> (hr)</b>	9.7 $\pm$ 1.7	9.6 $\pm$ 1.5

Absolute bioavailability of carisoprodol has not been determined. The mean time to peak plasma concentrations (T<sub>max</sub>) of carisoprodol was approximately 1.5 to 2 hours.

*Food Effect:* Co-administration of a high-fat meal with Carisoprodol Tablets (350 mg tablet) had no effect on the pharmacokinetics of carisoprodol. Therefore, Carisoprodol Tablets may be administered with or without food.

#### Elimination

*Metabolism:* The major pathway of carisoprodol metabolism is via the liver by cytochrome enzyme CYP2C19 to form meprobamate. This enzyme exhibits genetic polymorphism (see Patients with Reduced CYP2C19 Activity below).

*Excretion:* Carisoprodol is eliminated by both renal and non-renal routes with a terminal elimination half-life of approximately 2 hours. The half-life of meprobamate is approximately 10 hours.

#### Specific Populations

*Sex:* Exposure of carisoprodol is higher in female than in male subjects (approximately 30-50% on a weight adjusted basis). Overall exposure of meprobamate is comparable between female and male subjects.

*Patients with Reduced CYP2C19 Activity:* Carisoprodol Tablets should be used with caution in patients with reduced CYP2C19 activity. Published studies indicate that patients who are poor CYP2C19 metabolizers have a 4-fold increase in exposure to carisoprodol, and concomitant 50% reduced exposure to meprobamate compared to normal CYP2C19 metabolizers. The prevalence of poor metabolizers in Caucasians and African Americans is approximately 3-5% and in Asians is approximately 15-20%.

## 13 NONCLINICAL TOXICOLOGY

### 13.1 Carcinogenesis, Mutagenesis, Impairment of Fertility

#### Carcinogenesis

Long term studies in animals have not been performed to evaluate the carcinogenic potential of carisoprodol.

### Mutagenesis

Carisoprodol Tablets was not formally evaluated for genotoxicity. In published studies, carisoprodol was mutagenic in the *in vitro* mouse lymphoma cell assay in the absence of metabolizing enzymes, but was not mutagenic in the presence of metabolizing enzymes. Carisoprodol was clastogenic in the *in vitro* chromosomal aberration assay using Chinese hamster ovary cells with or without the presence of metabolizing enzymes. Other types of genotoxic tests resulted in negative findings. Carisoprodol was not mutagenic in the Ames reverse mutation assay using *S. typhimurium* strains with or without metabolizing enzymes, and was not clastogenic in an *in vivo* mouse micronucleus assay of circulating blood cells.

### Impairment of Fertility

Carisoprodol Tablets was not formally evaluated for effects on fertility. A published reproductive study in which female mice received carisoprodol orally at doses of 300, 750, or 1200 mg/kg/day (approximately 1, 2.6, and 4.1-times the MRHD of 1400 mg per day [350 mg QID] based on body surface area [BSA] comparison) from 1-week prior to mating, to 27-weeks post-mating found no alteration in fertility although an alteration in reproductive cycles characterized by a greater time spent in estrus was observed at a carisoprodol dose of 1200 mg/kg/day. In a 13-week toxicology study that did not determine fertility, mouse testes weight and sperm motility were reduced at a dose of 1200 mg/kg/day (maternal doses equivalent to 4.2-times the MRHD based on BSA comparison). In both studies, the no effect level was 750 mg/kg/day, corresponding to approximately 2.6-times the MRHD based on a BSA comparison. The significance of these findings for human fertility is not known.

## **14 CLINICAL STUDIES**

The safety and efficacy of Carisoprodol Tablets for the relief of acute, idiopathic mechanical low back pain was evaluated in two, 7-day, double blind, randomized, multicenter, placebo controlled, U.S. trials (Studies 1 and 2). Patients had to be 18 to 65 years old and had to have acute back pain ( $\leq 3$  days of duration) to be included in the trials. Patients with chronic back pain; at increased risk for vertebral fracture (e.g., history of osteoporosis); with a history of spinal pathology (e.g., herniated nucleus pulposus, spondylolisthesis or spinal stenosis); with inflammatory back pain, or with evidence of a neurologic deficit were excluded from participation. Concomitant use of analgesics (e.g., acetaminophen, NSAIDs, tramadol, opioid agonists), other muscle relaxants, botulinum toxin, sedatives (e.g., barbiturates, benzodiazepines, promethazine hydrochloride), and anti-epileptic drugs was prohibited.

In Study 1, patients were randomized to one of three treatment groups (i.e., Carisoprodol Tablets 250 mg, Carisoprodol Tablets 350 mg, or placebo) and in Study 2 patients were randomized to two treatment groups (i.e., Carisoprodol Tablets 250 mg or placebo). In both studies, patients received study medication three times a day and at bedtime for seven days.

The primary endpoints were the relief from starting backache and the global impression of change, as reported by patients, on Study Day 3. Both endpoints were scored on a 5-

point rating scale from 0 (worst outcome) to 4 (best outcome) in both studies. The primary statistical comparison was between the Carisoprodol Tablets 250 mg and placebo groups in both studies.

The proportion of patients who used concomitant acetaminophen, NSAIDs, tramadol, opioid agonists, other muscle relaxants, and benzodiazepines was similar in the treatment groups.

The results for the primary efficacy evaluations in the acute, low back pain studies are presented in Table 3.

**Table 3. Results of the Primary Efficacy Endpoints\* in Studies 1 and 2**

<b>Study</b>	<b>Parameter</b>	<b>Placebo</b>	<b>Carisoprodol Tablets 250 mg</b>	<b>Carisoprodol Tablets 350 mg</b>
1	<b>Number of Patients</b>	n=269	n=264	n=273
	<b>Relief from Starting Backache, Mean (SE)†</b>	1.4 (0.1)	1.8 (0.1)	1.8 (0.1)
	Difference between Carisoprodol Tablets and Placebo, Mean (SE)† (95% CI)		0.4 (0.2, 0.5)	0.4 (0.2, 0.6)
	<b>Global Impression of Change, Mean (SE)†</b>	1.9 (0.1)	2.2 (0.1)	2.2 (0.1)
	Difference between Carisoprodol Tablets and Placebo, Mean (SE)† (95% CI)		0.2 (0.1, 0.4)	0.3 (0.1, 0.4)
2	<b>Number of Patients</b>	n=278	n=269	
	<b>Relief from Starting Backache, Mean (SE)†</b>	1.1 (0.1)	1.8 (0.1)	
	Difference between Carisoprodol Tablets and Placebo, Mean (SE)† (95% CI)		0.7 (0.5, 0.9)	
	<b>Global Impression of Change, Mean (SE)†</b>	1.7 (0.1)	2.2 (0.1)	
	Difference between Carisoprodol Tablets and Placebo, Mean (SE)† (95% CI)		0.5 (0.4, 0.7)	

\* The primary efficacy endpoints (Relief from Starting Backache and Global Impression of Change) were assessed by the patients on Study Day 3. These endpoints were scored on a 5-point rating scale from 0 (worst outcome) to 4 (best outcome).

† Mean is the least squared mean and SE is the standard error of the mean. The ANOVA model was used for the primary statistical comparison between the Carisoprodol Tablets 250 mg and placebo groups.

Patients treated with Carisoprodol Tablets experienced improvement in function as measured by the Roland-Morris Disability Questionnaire (RMDQ) score on Days 3 and 7.

## **16 HOW SUPPLIED/STORAGE AND HANDLING**

250mg Tablets: Round, white to off white tablets, debossed with "NC" on one side and "250" on other side; available in bottles of 100 (NDC 69367-419-01).

350 mg Tablets: Round, white to off white tablets, debossed with "NC" on one side and "350" on other side; available in bottles of 100 (NDC 69367-420-01) and bottles of 500 (NDC 69367-420-05).

### Storage:

Store at controlled room temperature 20° to 25°C (68° to 77°F).[See USP Controlled Room Temperature.]

## **17 PATIENT COUNSELING INFORMATION**

Patients should be advised to contact their physician if they experience any adverse reactions to Carisoprodol Tablets.

### **Sedation**

Advise patients that Carisoprodol Tablets may cause drowsiness and/or dizziness, and has been associated with motor vehicle accidents. Patients should be advised to avoid taking Carisoprodol Tablets before engaging in potentially hazardous activities such as driving a motor vehicle or operating machinery [see *Warnings and Precautions (5.1)*].

### **Avoidance of Alcohol and Other CNS Depressants**

Advise patients to avoid alcoholic beverages while taking Carisoprodol Tablets and to check with their doctor before taking other CNS depressants such as benzodiazepines, opioids, tricyclic antidepressants, sedating antihistamines, or other sedatives [see *Warnings and Precautions (5.1)*].

### **Carisoprodol Tablets Should Only Be Used for Short-Term Treatment**

Advise patients that treatment with Carisoprodol Tablets should be limited to acute use (up to two or three weeks) for the relief of acute, musculoskeletal discomfort. In the post-marketing experience with Carisoprodol Tablets, cases of dependence, withdrawal, and abuse have been reported with prolonged use. If the musculoskeletal symptoms still persist, patients should contact their healthcare provider for further evaluation.

### **Lactation**

Advise nursing mothers using Carisoprodol Tablets to monitor neonates for signs of sedation [see *Use in Specific Populations (8.2)*].

### **Manufactured by:**

MPP Pharma, LLC.  
Kansas City, MO 64120

### **Manufactured for:**

Westminster Pharmaceuticals, LLC  
Nashville, TN 37217

Revised: 07/2025

1-210-2930-1741-01

## PRINCIPAL DISPLAY PANEL - 250 mg Tablet Bottle Label

NDC 69367-419-01

Rx Only

Carisoprodol

Tablets, USP

CIV

250 mg

100 Tablets

Westminster

Pharmaceuticals



## PRINCIPAL DISPLAY PANEL - 350 mg Tablet Bottle Label

NDC 69367-420-01

Rx Only

Carisoprodol

Tablets, USP

CIV

350 mg

100 Tablets

Westminster

Pharmaceuticals

Each Tablet Contains  
350 mg of  
Carisoprodol, USP

**USUAL DOSAGE:**  
Please see enclosed  
full Prescribing  
Information.

Store at 20° to 25°C (68°  
to 77°F) [See USP  
Controlled Room  
Temperature].

Dispense in a tight  
container.

NDC 69367-420-01  
Rx Only

**Carisoprodol** CIV  
**Tablets, USP**

**350 mg**

100 Tablets

**WP Westminster  
Pharmaceuticals**

Manufactured by:  
MPP Pharma, LLC.  
Kansas City, MO 64120

Manufactured for:  
**Westminster Pharmaceuticals, LLC**  
Nashville, TN 37217 Rev. 07/25

Non-Varnish  
Area 2.00" x .90"

## CARISOPRODOL

carisoprodol tablet

### Product Information

<b>Product Type</b>	HUMAN PRESCRIPTION DRUG	<b>Item Code (Source)</b>	NDC:69367-419
<b>Route of Administration</b>	ORAL	<b>DEA Schedule</b>	CIV

### Active Ingredient/Active Moiety

Ingredient Name	Basis of Strength	Strength
<b>CARISOPRODOL</b> (UNII: 21925K482H) (CARISOPRODOL - UNII:21925K482H)	CARISOPRODOL	250 mg

### Inactive Ingredients

Ingredient Name	Strength
<b>SILICON DIOXIDE</b> (UNII: ETJ7Z6XBU4)	
<b>CROSCARMELLOSE SODIUM</b> (UNII: M28OL1HH48)	
<b>HYPROMELLOSE, UNSPECIFIED</b> (UNII: 3NXW29V3WO)	
<b>MAGNESIUM STEARATE</b> (UNII: 70097M6I30)	
<b>MICROCRYSTALLINE CELLULOSE</b> (UNII: OP1R32D61U)	
<b>SODIUM LAURYL SULFATE</b> (UNII: 368GB5141J)	

### Product Characteristics

<b>Color</b>	WHITE (White to off-white)	<b>Score</b>	no score
<b>Shape</b>	ROUND	<b>Size</b>	10mm
<b>Flavor</b>		<b>Imprint Code</b>	NC;250
<b>Contains</b>			

Packaging				
#	Item Code	Package Description	Marketing Start Date	Marketing End Date
1	NDC:69367-419-01	100 in 1 BOTTLE; Type 0: Not a Combination Product	11/25/2025	

Marketing Information			
Marketing Category	Application Number or Monograph Citation	Marketing Start Date	Marketing End Date
ANDA	ANDA207237	11/25/2025	

CARISOPRODOL			
carisoprodol tablet			

Product Information			
Product Type	HUMAN PRESCRIPTION DRUG	Item Code (Source)	NDC:69367-420
Route of Administration	ORAL	DEA Schedule	CIV

Active Ingredient/Active Moiety			
Ingredient Name		Basis of Strength	Strength
CARISOPRODOL (UNII: 21925K482H) (CARISOPRODOL - UNII:21925K482H)		CARISOPRODOL	350 mg

Inactive Ingredients		Strength
SILICON DIOXIDE (UNII: ETJ7Z6XBU4)		
CROSCARMELLOSE SODIUM (UNII: M28OL1HH48)		
HYPROMELLOSE, UNSPECIFIED (UNII: 3NXW29V3WO)		
MAGNESIUM STEARATE (UNII: 70097M6I3O)		
MICROCRYSTALLINE CELLULOSE (UNII: OP1R32D61U)		
SODIUM LAURYL SULFATE (UNII: 368GB5141J)		

Product Characteristics			
Color	WHITE (White to off-white)	Score	no score
Shape	ROUND	Size	13mm
Flavor		Imprint Code	NC;350
Contains			

Packaging				
#	Item Code	Package Description	Marketing Start Date	Marketing End Date
1	NDC:69367-420-	100 in 1 BOTTLE; Type 0: Not a Combination	11/25/2025	



1	01	Product	11/25/2025	
2	NDC:69367-420-05	500 in 1 BOTTLE; Type 0: Not a Combination Product	11/25/2025	
Marketing Information				
Marketing Category		Application Number or Monograph Citation	Marketing Start Date	Marketing End Date
ANDA		ANDA207237	11/25/2025	

**Labeler -** Westminster Pharmaceuticals, LLC (079516651)

**Registrant -** MPP Pharma LLC (137555154)

Establishment			
Name	Address	ID/FEI	Business Operations
MPP Pharma LLC		137555154	ANALYSIS(69367-419, 69367-420) , MANUFACTURE(69367-419, 69367-420) , PACK(69367-419, 69367-420) , LABEL(69367-419, 69367-420)