

# **INFANTS MOTRIN- ibuprofen suspension/ drops**

## **Kenvue Brands LLC**

-----

### **Infants Motrin**

#### ***Drug Facts***

#### **Active ingredient (in each 1.25 mL)**

Ibuprofen 50 mg (NSAID) <sup>1</sup>

---

<sup>1</sup> nonsteroidal anti-inflammatory drug

#### **Purposes**

Pain reliever/fever reducer

#### **Uses**

temporarily:

- reduces fever
- relieves minor aches and pains due to the common cold, flu, sore throat, headaches and toothaches

#### **Warnings**

##### **Allergy alert**

Ibuprofen may cause a severe allergic reaction, especially in people allergic to aspirin. Symptoms may include:

- hives
- facial swelling
- asthma (wheezing)
- shock
- skin reddening
- rash
- blisters

If an allergic reaction occurs, stop use and seek medical help right away.

##### **Stomach bleeding warning**

This product contains an NSAID, which may cause severe stomach bleeding. The chance is higher if your child:

- has had stomach ulcers or bleeding problems
- takes a blood thinning (anticoagulant) or steroid drug
- takes other drugs containing prescription or nonprescription NSAIDs (aspirin,

ibuprofen, naproxen, or others)

- takes more or for a longer time than directed

### **Heart attack and stroke warning**

NSAIDs, except aspirin, increase the risk of heart attack, heart failure, and stroke. These can be fatal. The risk is higher if you use more than directed or for longer than directed.

### **Sore throat warning**

Severe or persistent sore throat or sore throat accompanied by high fever, headache, nausea, and vomiting may be serious. Consult doctor promptly. Do not use more than 2 days or administer to children under 3 years of age unless directed by doctor.

### **Do not use**

- if the child has ever had an allergic reaction to ibuprofen or any other pain reliever/fever reducer
- right before or after heart surgery

### **Ask a doctor before use if**

- stomach bleeding warning applies to your child
- child has a history of stomach problems, such as heartburn
- child has problems or serious side effects from taking pain relievers or fever reducers
- child has not been drinking fluids
- child has lost a lot of fluid due to vomiting or diarrhea
- child has high blood pressure, heart disease, liver cirrhosis, kidney disease, or had a stroke
- child has asthma
- child is taking a diuretic

### **Ask a doctor or pharmacist before use if the child is**

- under a doctor's care for any serious condition
- taking any other drug

### **When using this product**

- take with food or milk if stomach upset occurs

### **Stop use and ask a doctor if**

- child experiences any of the following signs of stomach bleeding:
  - feels faint
  - vomits blood
  - has bloody or black stools
  - has stomach pain that does not get better
- child has symptoms of heart problems or stroke:
  - chest pain
  - trouble breathing
  - weakness in one part or side of body
  - slurred speech
  - leg swelling

- the child does not get any relief within first day (24 hours) of treatment
- fever or pain gets worse or lasts more than 3 days
- redness or swelling is present in the painful area
- any new symptoms appear

**Keep out of reach of children.** In case of overdose, get medical help or contact a Poison Control Center right away. (1-800-222-1222)

### Directions

- **this product does not contain directions or complete warnings for adult use**
- **do not give more than directed**
- shake well before using
- find right dose on chart below. If possible, use weight to dose; otherwise use age.
- mL = milliliter
- measure with the dosing device provided. Do not use with any other device.
- dispense liquid slowly into the child's mouth, toward the inner cheek
- if needed, repeat dose every **6-8 hours**
- do not use more than **4 times a day**

### Dosing Chart

Weight (lb)	Age (mos)	Dose (mL)
under 6 mos		ask a doctor
12-17 lbs	6-11 mos	1.25 mL
18-23 lbs	12-23 mos	1.875 mL

### Other information

- store between 20-25°C (68-77°F)
- **do not use if carton tape or bottle wrap imprinted with "Sealed For Your Safety" is broken or missing**

### Inactive ingredients

anhydrous citric acid, caramel, FD&C red no. 40, flavors, glycerin, polysorbate 80, pregelatinized starch, purified water, sodium benzoate, sorbitol solution, sucrose, xanthan gum

### Questions or comments?

Call **1-877-895-3665** (toll-free) or **215-273-8755** (collect)

### PRINCIPAL DISPLAY PANEL

NDC 50580-100-18

For Ages 6 Mos. to 23 Mos.

-  
Concentrated  
Motrin<sup>®</sup>  
Infants' Drops  
contains Ibuprofen  
Oral Suspension (NSAID)  
50 mg per 1.25 mL  
Pain Reliever/Fever Reducer

Lasts up to  
8 hours

Use only with  
enclosed syringe.

Original  
Berry Flavor

1/2 fl oz (15 ml)



**Important:** Read all product information before using. Keep this box for important information. This product is intended for use in children ages 6 months to 23 months of age.

**Drug Facts**

**Active ingredient (in each 1.25 mL)**  
Ibuprofen 50 mg (NSAID)  
Pain reliever/fever reducer

**Uses temporarily:**  
 ■ reduces fever  
 ■ relieves minor aches and pains due to the common cold, flu, sore throat, headaches and toothaches

NDC 50580-100-18

**For Ages 6 Mos. to 23 Mos.**

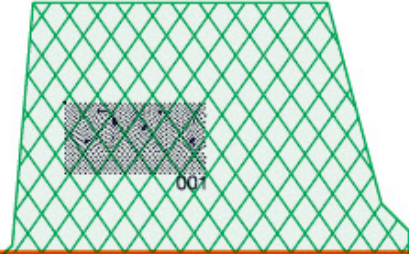
**Concentrated  
Motrin®  
Infants' Drops**

contains **Ibuprofen**  
**Oral Suspension (NSAID)**  
 50 mg per 1.25 mL  
**Pain Reliever/Fever Reducer**

**Lasts up to  
8 hours**

Use only with enclosed syringe.

**Original  
Berry Flavor**





1/2 fl oz (15 ml)

Actual Size

LOT:

EXP:

Distributed by: **JOHNSON & JOHNSON CONSUMER INC.**  
McNeil Consumer Healthcare Division  
Fort Washington, PA 19034 USA ©J&JCI 2020  
[www.motrin.com](http://www.motrin.com) 30048169



USA  
692480  
891

### Drug Facts (continued)

#### Warnings

**Allergy alert:** Ibuprofen may cause a severe allergic reaction, especially in people allergic to aspirin. Symptoms may include:

- hives
- facial swelling
- asthma (wheezing)
- shock
- skin reddening
- rash
- blisters

If an allergic reaction occurs, stop use and seek medical help right away.

**Stomach bleeding warning:** This product contains an NSAID, which may cause severe stomach bleeding. The chance is higher if your child:

- has had stomach ulcers or bleeding problems
- takes a blood thinning (anticoagulant) or steroid drug
- takes other drugs containing prescription or nonprescription NSAIDs (aspirin, ibuprofen, naproxen, or others)
- takes more or for a longer time than directed

**Heart attack and stroke warning:** NSAIDs, except aspirin, increase the risk of heart attack, heart failure, and stroke. These can be fatal. The risk is higher if you use more than directed or for longer than directed.

**Sore throat warning:** Severe or persistent sore throat or sore throat accompanied by high fever, headache, nausea, and vomiting may be serious. Consult doctor promptly. Do not use more than 2 days or administer to children under 3 years of age unless directed by doctor.

#### Do not use

- if the child has ever had an allergic reaction to ibuprofen or any other pain reliever/fever reducer
- right before or after heart surgery

#### Ask a doctor before use if

- stomach bleeding warning applies to your child
- child has a history of stomach problems, such as heartburn
- child has problems or serious side effects from taking pain relievers or fever reducers
- child has not been drinking fluids
- child has lost a lot of fluid due to vomiting or diarrhea
- child has high blood pressure, heart disease, liver cirrhosis, kidney disease, or had a stroke
- child has asthma
- child is taking a diuretic

Ask doctor or pharmacist before use if the child is

### Drug Facts (continued)

**Keep out of reach of children.** In case of overdose, get medical help or contact a Poison Control Center right away. (1-800-222-1222)

#### Directions

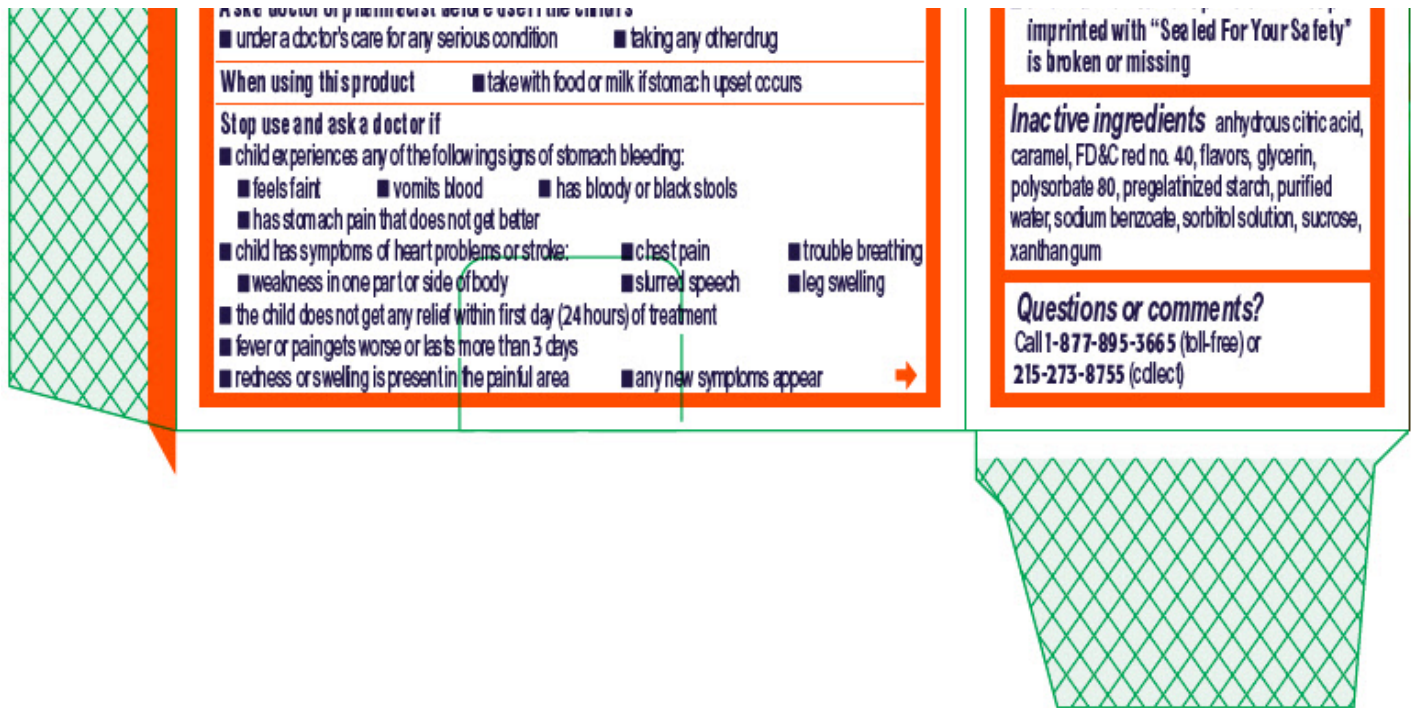
- This product does not contain directions or complete warnings for adult use
- do not give more than directed
- shake well before using
- find right dose on chart below. If possible, use weight to dose; otherwise use age.
- mL = milliliter
- measure with the dosing device provided. Do not use with any other device.
- dispense liquid slowly into the child's mouth, toward the inner cheek
- if needed, repeat dose every 6-8 hours
- do not use more than 4 times a day

#### Dosing Chart

Weight (lb)	Age (mos)	Dose (mL)
under 6 mos		ask a doctor
12-17 lbs	6-11 mos	1.25 mL
18-23 lbs	12-23 mos	1.875 mL

#### Other information

- store between 20-25°C (68-77°F)
- do not use if carton tape or bottle wrap



## INFANTS MOTRIN

ibuprofen suspension/ drops

### Product Information

<b>Product Type</b>	HUMAN OTC DRUG	<b>Item Code (Source)</b>	NDC:50580-100
<b>Route of Administration</b>	ORAL		

### Active Ingredient/Active Moiety

Ingredient Name	Basis of Strength	Strength
<b>IBUPROFEN</b> (UNII: WK2XY110QM) (IBUPROFEN - UNII:WK2XY110QM)	IBUPROFEN	50 mg in 1.25 mL

### Inactive Ingredients

Ingredient Name	Strength
<b>ANHYDROUS CITRIC ACID</b> (UNII: XF417D3PSL)	
<b>CARAMEL</b> (UNII: T9D99G2B1R)	
<b>FD&amp;C RED NO. 40</b> (UNII: WZB9127XOA)	
<b>GLYCERIN</b> (UNII: PDC6A3C0OX)	
<b>POLYSORBATE 80</b> (UNII: 6OZP39ZG8H)	
<b>WATER</b> (UNII: 059QF0K00R)	
<b>SODIUM BENZOATE</b> (UNII: OJ245FE5EU)	
<b>SORBITOL SOLUTION</b> (UNII: 8KW3E207O2)	
<b>SUCROSE</b> (UNII: C151H8M554)	
<b>XANTHAN GUM</b> (UNII: TTV12P4NEE)	

### Product Characteristics

<b>Color</b>	pink	<b>Score</b>	
<b>Shape</b>		<b>Size</b>	
<b>Flavor</b>	BERRY	<b>Imprint Code</b>	
<b>Contains</b>			

### Packaging

#	Item Code	Package Description	Marketing Start Date	Marketing End Date
1	NDC:50580-100-18	1 in 1 CARTON	05/15/2012	
1		15 mL in 1 BOTTLE; Type 1: Convenience Kit of Co-Package		

### Marketing Information

Marketing Category	Application Number or Monograph Citation	Marketing Start Date	Marketing End Date
NDA	NDA020603	06/01/2004	

**Labeler** - Kenvue Brands LLC (118772437)

Revised: 1/2025

Kenvue Brands LLC