

# IVRA - melphalan hcl injection, solution

## Apotex Corp

-----

### HIGHLIGHTS OF PRESCRIBING INFORMATION

These highlights do not include all the information needed to use IVRA safely and effectively. See full prescribing information for IVRA. IVRA (melphalan) injection, for intravenous use Initial U.S. Approval: 1964

#### **WARNING: SEVERE BONE MARROW SUPPRESSION, HYPERSENSITIVITY and LEUKEMOGENICITY**

See full prescribing information for complete boxed warning.

- Severe bone marrow suppression with resulting infection or bleeding may occur. Controlled trials comparing intravenous melphalan to oral melphalan have shown more myelosuppression with the intravenous formulation. Monitor hematologic laboratory parameters (5.1).
- Hypersensitivity reactions, including anaphylaxis, have occurred in approximately 2% of patients who received the intravenous formulation of melphalan. Discontinue treatment with IVRA for serious hypersensitivity reactions (5.4).
- Melphalan produces chromosomal aberrations in vitro and in vivo. IVRA should be considered potentially leukemogenic in humans (5.5).

#### ----- INDICATIONS AND USAGE -----

IVRA is an alkylating drug indicated for palliative treatment of patients with multiple myeloma for whom oral therapy is not appropriate. (1)

#### ----- DOSAGE AND ADMINISTRATION -----

Recommended dosage is 16 mg/m<sup>2</sup> administered intravenously over 15 to 20 minutes at 2-week intervals for 4 doses, then, after adequate recovery from toxicity, at 4-week intervals. (2.2)  
See full prescribing information for preparation and administration instructions. (2.3)

#### ----- DOSAGE FORMS AND STRENGTHS -----

Injection: 90 mg/mL of melphalan in a multiple-dose vial. (3)

#### ----- CONTRAINDICATIONS -----

History of severe hypersensitivity to melphalan. (4)

#### ----- WARNINGS AND PRECAUTIONS -----

- Gastrointestinal toxicity: Nausea, vomiting, diarrhea, or oral mucositis may occur; provide supportive care using antiemetic and antidiarrheal medications as needed. (5.2)
- Embryo-fetal toxicity: Can cause fetal harm. Advise females of reproductive potential and males with female partners of reproductive potential of potential risk to fetus and to use effective contraception. (5.6, 8.1)
- Infertility: Melphalan may cause ovarian function suppression or testicular suppression. (5.7)

#### ----- ADVERSE REACTIONS -----

Most common adverse reactions (≥50%) are neutrophil count decreased, white blood cell count decreased, lymphocyte count decreased, platelet count decreased, diarrhea, nausea, fatigue, hypokalemia, anemia, and vomiting. (6.1)

**To report SUSPECTED ADVERSE REACTIONS, contact Apotex Corp. at 1-800-706-5575 or FDA at 1-800-FDA-1088 or [www.fda.gov/medwatch](http://www.fda.gov/medwatch).**

#### ----- USE IN SPECIFIC POPULATIONS -----

Lactation: Advise not to breastfeed. (8.2)

Renal insufficiency (BUN ≥30 mg/dL): Consider dosage reduction (2.2, 8.6)

**See 17 for PATIENT COUNSELING INFORMATION.**

**Revised: 7/2024**

**FULL PRESCRIBING INFORMATION: CONTENTS\***

**WARNING: SEVERE BONE MARROW SUPPRESSION, HYPERSENSITIVITY and LEUKEMOGENICITY**

**1 INDICATIONS AND USAGE**

**2 DOSAGE AND ADMINISTRATION**

- 2.1 Recommended Dosage
- 2.2 Dosage Modifications for Adverse Reactions
- 2.3 Dosage Modifications for Renal Impairment
- 2.4 Preparation and Administration

**3 DOSAGE FORMS AND STRENGTHS**

**4 CONTRAINDICATIONS**

**5 WARNINGS AND PRECAUTIONS**

- 5.1 Bone Marrow Suppression
- 5.2 Gastrointestinal Toxicity
- 5.3 Hepatotoxicity
- 5.4 Hypersensitivity
- 5.5 Secondary Malignancies
- 5.6 Embryo-Fetal Toxicity
- 5.7 Infertility

**6 ADVERSE REACTIONS**

- 6.1 Clinical Trials Experience

**7 DRUG INTERACTIONS**

- 7.1 Effect of Other Drugs on IVRA
- 7.2 Effect of IVRA on Other Drugs
- 7.3 Cyclosporine

**8 USE IN SPECIFIC POPULATIONS**

- 8.1 Pregnancy
- 8.2 Lactation
- 8.3 Females and Males of Reproductive Potential
- 8.4 Pediatric Use
- 8.5 Geriatric Use
- 8.6 Renal Impairment

**10 OVERDOSAGE**

**11 DESCRIPTION**

**12 CLINICAL PHARMACOLOGY**

- 12.1 Mechanism of Action
- 12.2 Pharmacodynamics
- 12.3 Pharmacokinetics

**13 NONCLINICAL TOXICOLOGY**

- 13.1 Carcinogenesis, Mutagenesis, Impairment of Fertility

**14 CLINICAL STUDIES**

**15 REFERENCES**

**16 HOW SUPPLIED/STORAGE AND HANDLING**

**17 PATIENT COUNSELING INFORMATION**

\* Sections or subsections omitted from the full prescribing information are not listed.

---

## FULL PRESCRIBING INFORMATION

### **WARNING: SEVERE BONE MARROW SUPPRESSION, HYPERSENSITIVITY and LEUKEMOGENICITY**

- Severe bone marrow suppression with resulting infection or bleeding may occur. Controlled trials comparing intravenous melphalan to oral melphalan have shown more myelosuppression with the intravenous formulation. Monitor hematologic laboratory parameters [see *Warnings and Precautions ( 5.1 )*].
- Hypersensitivity reactions, including anaphylaxis, have occurred in approximately 2% of patients who received the intravenous formulation of melphalan. Discontinue treatment with IVRA for serious hypersensitivity reactions [see *Warnings and Precautions (5.4)*].
- Melphalan produces chromosomal aberrations *in vitro* and *in vivo*. IVRA should be considered potentially leukemogenic in humans [see *Warnings and Precautions (5.5)*].

## 1 INDICATIONS AND USAGE

### Multiple Myeloma-Palliative Treatment

IVRA is indicated for the palliative treatment of patients with multiple myeloma for whom oral therapy is not appropriate.

## 2 DOSAGE AND ADMINISTRATION

### 2.1 Recommended Dosage

The recommended dosage is 16 mg/m<sup>2</sup> intravenously over 15 to 20 minutes at 2-week intervals for 4 doses, then at 4-week intervals until unacceptable toxicity.

Administer prophylactic antiemetics [see *Warnings and Precautions (5.2)*].

### 2.2 Dosage Modifications for Adverse Reactions

See Table 1 for dosage modifications for adverse reactions related to bone marrow suppression [see *Warnings and Precautions (5.1)*].

Table 1. Dosage Modifications for Adverse Reaction: Bone Marrow Suppression

Parameter		Dosing Recommendations
White Blood Cell Count (WBC/mm <sup>3</sup> )	Platelet Count (Per mL)	
Greater than or equal to 4,000	Greater than or equal to 100,000	Continue full IVRA dose
Greater than or equal to 3,000	Greater than or equal to 75,000	Reduce IVRA to 75% of full dose
Greater than or equal	Greater than or	Reduce IVRA to 50%

to 2,000	equal to 50,000	of full dose
Less than 2,000	Less than 50,000	Withhold IVRA

### 2.3 Dosage Modifications for Renal Impairment

Consider a dosage reduction of up to 50% in patients with renal insufficiency (BUN  $\geq$ 30 mg/dL) [see *Use in Specific Populations (8.6)*].

### 2.4 Preparation and Administration

#### Preparation

- IVRA is a hazardous drug. Follow applicable special handling and disposal procedures<sup>1</sup>.
- Parenteral drug products should be visually inspected for particulate matter and discoloration prior to administration whenever solution and container permit. If either occurs, do not use this product.
- IVRA is light sensitive. After first use, store the partially used vial refrigerated at 2°C to 8°C [36°F to 46°F] in the original carton for use within 28 days and then discard the remaining contents. Retain vial in original carton until contents are used.
- Do not mix IVRA with other melphalan hydrochloride drug products.

#### Dilution

- Calculate the required volume of IVRA needed for a patient's dose and withdraw that volume from the vial(s).
- Add the required volume of IVRA to the appropriate volume of 0.9% Sodium Chloride Injection to obtain a solution with a concentration not greater than 0.45 mg/mL. Immediately mix the contents of infusion vigorously by manual rotation. The diluted product is stable for 1 hour at room temperature.

#### Administration

- Infuse over 15 to 20 minutes via an injection port or central venous catheter. Complete administration within 60 minutes of dilution.
- IVRA may cause local tissue damage should extravasation occur. Administer IVRA only by injecting slowly into a fast-running intravenous infusion via an injection port or, central venous access line.

## 3 DOSAGE FORMS AND STRENGTHS

Injection: 90 mg/mL melphalan as a clear colorless to yellow solution in a multiple-dose vial for dilution.

## 4 CONTRAINDICATIONS

IVRA is contraindicated in patients with a history of severe hypersensitivity to melphalan. Reactions have included anaphylaxis [see *Warnings and Precautions (5.4)*].

## 5 WARNINGS AND PRECAUTIONS

## **5.1 Bone Marrow Suppression**

IVRA causes bone marrow suppression in most patients.

Obtain complete blood counts with differential at the start of therapy and prior to each subsequent dose of IVRA. Withhold treatment for grade 3 thrombocytopenia and/ or leukopenia until blood counts have returned to grade 2 [see *Dosage and Administration* (2.2)]. Consider dose adjustment on the basis of blood counts at the nadir and day of treatment.

## **5.2 Gastrointestinal Toxicity**

Gastrointestinal disturbances such as nausea and vomiting, diarrhea, and oral ulceration can occur with melphalan treatment.

Severe mucositis, stomatitis, colitis, diarrhea, and hemorrhage of the gastrointestinal tract occur at high doses (greater than 100 mg/m<sup>2</sup> 6 times the recommended approved dose).

Use prophylactic antiemetics [see *Dosage and Administration* (2.1)]. Provide supportive care for nausea, vomiting, diarrhea, and mucositis.

## **5.3 Hepatotoxicity**

Hepatic disorders ranging from abnormal liver function tests to clinical manifestations such as hepatitis and jaundice have been reported during treatment with melphalan. Hepatic veno-occlusive disease has been reported. Monitor liver enzymes as clinically indicated.

## **5.4 Hypersensitivity**

Acute hypersensitivity reactions including anaphylaxis were reported in 2.4% of 425 patients receiving melphalan injection for myeloma. These reactions were characterized by urticaria, pruritus, edema, skin rashes, and in some patients, tachycardia, bronchospasm, dyspnea, and hypotension. These patients appeared to respond to antihistamine and corticosteroid therapy. If a hypersensitivity reaction occurs, intravenous or oral melphalan should not be readministered since hypersensitivity reactions have also been reported with oral melphalan. Cardiac arrest has also been reported in association with such reports.

Discontinue treatment with IVRA for serious hypersensitivity reactions.

## **5.5 Secondary Malignancies**

Melphalan has been shown to cause chromatid or chromosome damage in humans. Secondary malignancies, including acute nonlymphocytic leukemia, myeloproliferative syndrome, and carcinoma, have been reported in patients with cancer treated with alkylating agents (including melphalan). Some patients also received other chemotherapeutic agents or radiation therapy. The potential benefits from melphalan therapy must be weighed on an individual basis against the possible risk of the induction of a second malignancy.

## **5.6 Embryo-Fetal Toxicity**

Based on its mechanism of action, IVRA can cause fetal harm when administered to a

pregnant woman. Melphalan is genotoxic, targets actively dividing cells, and was embryolethal and teratogenic in rats. While adequate animal studies have not been conducted with intravenous melphalan, oral (6 to 18 mg/m<sup>2</sup>/day for 10 days) and IP (18 mg/m<sup>2</sup>) administration in rats was embryolethal and teratogenic. Malformations resulting from melphalan included alterations of the brain (underdevelopment, deformation, meningocele, and encephalocele) and eye (anophthalmia and microphthalmos), reduction of the mandible and tail, as well as hepatocoele (exomphaly).

If this drug is used during pregnancy or if the patient becomes pregnant while taking this drug, advise a pregnant woman of the of potential risk to the fetus. Advise females of reproductive potential to use effective contraception during treatment with IVRA and for 6 months after the last dose. Advise males with female partners of reproductive potential to use effective contraception during treatment with IVRA and for 3 months after the last dose [see *Use in Specific Populations* (8.1, 8.3)].

## 5.7 Infertility

Melphalan causes suppression of ovarian function in premenopausal women, resulting in amenorrhea in a significant number of patients. Reversible and irreversible testicular suppression have also been reported [see *Use in Specific Populations* (8.3)].

## 6 ADVERSE REACTIONS

The following clinically significant adverse reactions are described elsewhere in the labeling:

- Bone Marrow Suppression [see *Warnings and Precautions* (5.1)]
- Gastrointestinal Toxicity [see *Warnings and Precautions* (5.2)]
- Hepatotoxicity [see *Warnings and Precautions* (5.3)]
- Hypersensitivity [see *Warnings and Precautions* (5.4)]
- Secondary Malignancies [see *Warnings and Precautions* (5.5)]

### 6.1 Clinical Trials Experience

Because clinical studies are conducted under widely varying conditions, adverse reaction rates observed in the clinical studies of melphalan may not reflect the rates observed in practice.

The most common adverse reactions observed in at least 50% of patients with multiple myeloma treated with melphalan were neutrophil count decreased, white blood cell count decreased, lymphocyte count decreased, platelet count decreased, diarrhea, nausea, fatigue, hypokalemia, anemia, and vomiting.

#### *Palliative Treatment of Patients with Multiple Myeloma*

The safety of melphalan was evaluated in 295 patients with multiple myeloma in the randomized clinical trial [see *Clinical Studies* (14)]. One hundred and ninety-five patients were administered intravenous melphalan at a dosage of 16 mg/m<sup>2</sup>

q 2 weeks x 4 (over 6 weeks) followed by the same dose every 4 weeks. One hundred patients were administered oral melphalan at a dosage of 0.15 mg/kg/day x 7 followed by 0.05 mg/kg/day when WBC counts began to rise.

Severe myelotoxicity (WBC  $\leq$ 1,000 and/or platelets  $\leq$ 25,000) was more common in the

intravenous melphalan arm (28%) than in the oral melphalan arm (11%).

## **7 DRUG INTERACTIONS**

### **7.1 Effect of Other Drugs on IVRA**

#### Cisplatin

Concomitant use with cisplatin may alter melphalan clearance by inducing renal dysfunction. Consider intravenous IVRA dosage reduction in patients with renal insufficiency following concomitant use with cisplatin [see *Dosage and Administration (2.2)*].

### **7.2 Effect of IVRA on Other Drugs**

#### BCNU

Concomitant use with BCNU may reduce the threshold for lung toxicity. Monitor for increased lung toxicity.

### **7.3 Cyclosporine**

Concomitant use with cyclosporine may increase the risk of developing severe renal failure [see *Clinical Pharmacology (12.3)*]. Consider intravenous IVRA dosage reduction in patients with renal insufficiency following concomitant use with cyclosporine [see *Dosage and Administration (2.2)*].

## **8 USE IN SPECIFIC POPULATIONS**

### **8.1 Pregnancy**

#### Risk Summary

Based on its mechanism of action and findings from animal studies, IVRA can cause fetal harm when administered to a pregnant woman. There are no available data on IVRA use in pregnant women to evaluate for a drug-associated risk. In rats, melphalan was embryolethal and teratogenic at doses lower than the highest recommended clinical dose (see Data). If this drug is used during pregnancy, or if the patient becomes pregnant while taking this drug, the patient should be apprised of the potential risk to the fetus.

The background risk in the U.S. general population of major birth defects is 2 to 4% and of miscarriage is 15 to 20% of clinically recognized pregnancies.

#### Data

##### *Animal Data*

Adequate animal studies have not been conducted with intravenous melphalan. Melphalan was embryolethal and teratogenic in rats following oral administration of 6 to 18 mg/m<sup>2</sup>/day for 10 days (0.06 to 0.18 times the highest recommended clinical dose of 100 mg/m<sup>2</sup>/day) and intraperitoneal administration of 18 mg/m<sup>2</sup> (0.18 times the highest recommended clinical dose). Malformations resulting from melphalan administration

included alterations of the brain (underdevelopment, deformation, meningocele, and encephalocele) and eye (anophthalmia and microphthalmos), reduction of the mandible and tail, and hepatocele (exomphaly).

## **8.2 Lactation**

### Risk Summary

There are no data on the presence of melphalan in human milk, the effects on the breastfed child, or the effects on milk production. Because of the potential for serious adverse reactions in a breastfed child, advise women not to breastfeed during treatment with IVRA and for 1 week following the last dose.

## **8.3 Females and Males of Reproductive Potential**

IVRA can cause fetal harm when administered to a pregnant woman [*see Use in Specific Populations (8.1)*].

### Contraception

#### *Females*

Advise females of reproductive potential to use effective contraception during treatment with IVRA and for 6 months after the last dose.

#### *Males*

Melphalan may damage spermatozoa and testicular tissue, resulting in possible genetic fetal abnormalities. Advise males with female partners of reproductive potential to use effective contraception during treatment with IVRA and for 3 months after the last dose [*see Nonclinical Toxicology (13.1)*].

### Infertility

#### *Females*

Melphalan causes suppression of ovarian function in premenopausal women, resulting in amenorrhea in a significant number of patients.

#### *Males*

Reversible and irreversible testicular suppression has been reported in male patients after administration of melphalan.

## **8.4 Pediatric Use**

The safety and effectiveness of IVRA in pediatric patients have not been established.

## **8.5 Geriatric Use**

Clinical studies of melphalan did not include sufficient numbers of subjects aged 65 and over to determine whether they respond differently from younger subjects. Other reported clinical experience has not identified differences in responses between the elderly and younger patients. In general, dose selection for an elderly patient should be cautious, usually starting at the low end of the dosing range, reflecting the greater frequency of decreased hepatic, renal, or cardiac function, and of concomitant disease or other drug therapy.



## 8.6 Renal Impairment

Consider a dosage reduction in patients with renal insufficiency receiving intravenous IVRA [see *Dosage and Administration (2.2)*]. In one trial, increased bone marrow suppression was observed in patients with elevated BUN [see *Clinical Pharmacology (12.3)*].

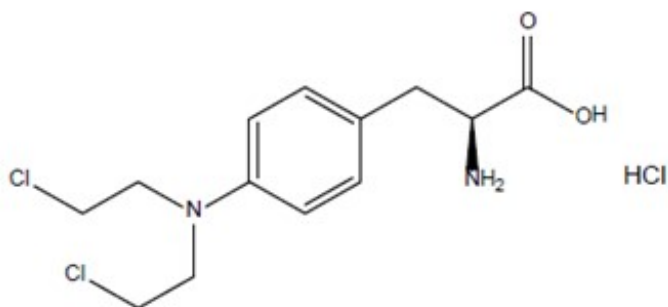
## 10 OVERDOSAGE

Overdoses resulting in death have been reported. Overdoses, including doses up to 290 mg/m<sup>2</sup> (18 times the recommended dose), have produced the following symptoms: severe nausea and vomiting, decreased consciousness, convulsions, muscular paralysis, and cholinomimetic effects. Severe mucositis, stomatitis, colitis, diarrhea, and hemorrhage of the gastrointestinal tract occur at high doses (greater than 100 mg/m<sup>2</sup> 6 times the recommended dose). Elevations in liver enzymes and veno-occlusive disease have occurred. Significant hyponatremia caused by an associated inappropriate secretion of ADH syndrome has been observed. Nephrotoxicity and adult respiratory distress syndrome have been reported.

The principal toxic effect is bone marrow suppression. In the event of an overdose, monitor hematologic parameters for 3 to 6 weeks. General supportive measures together with appropriate blood transfusions and antibiotics should be instituted as deemed necessary by the physician. This drug is not removed from plasma to any significant degree by hemodialysis or hemoperfusion.

## 11 DESCRIPTION

IVRA contains melphalan which is an alkylating drug. The chemical name of melphalan hydrochloride is 4-[bis(2-chloroethyl)amino]-L-phenylalanine hydrochloride. The molecular formula is C<sub>13</sub>H<sub>18</sub>Cl<sub>2</sub>N<sub>2</sub>O<sub>2</sub> • HCl and the molecular weight is 341.67. The structural formula is:



Melphalan hydrochloride is a white to off-white powder, with a melting range of 199°C to 201°C. It is practically insoluble in water, but freely soluble in 1N HCl and methanol.

IVRA is supplied as a sterile, clear colorless to yellow solution in a multiple-dose vial for intravenous use. Each mL contains 90 mg melphalan free base equivalent to 100.75 mg melphalan hydrochloride, 170 mg propylene glycol, 5 mg monothioglycerol, 0.5 mg (1,4,7,10-tetraazacyclododecane-1,4,7,10-tetraacetic acid dihydrate), and 0.025 mL water for injection in polyethylene glycol 400. May contain hydrochloric acid and/or sodium hydroxide for pH adjustment. The pH of the drug product solution after dilution

with 0.9% sodium chloride ranges from 2.4 - 3.5. Each mL contains 90 mg melphalan free base equivalent to 100.75 mg melphalan hydrochloride.

## **12 CLINICAL PHARMACOLOGY**

### **12.1 Mechanism of Action**

Melphalan is an alkylating agent of the bischloroethylamine type. As a result, its cytotoxicity appears to be related to the extent of its interstrand cross-linking with DNA, probably by binding at the N<sup>7</sup> position of guanine. Like other bifunctional alkylating agents, it is active against both resting and rapidly dividing tumor cells.

### **12.2 Pharmacodynamics**

Due to lack of information, melphalan exposure-response relationships and the time course of pharmacodynamic response are unknown.

### **12.3 Pharmacokinetics**

The mean  $\pm$ SD melphalan peak plasma concentration is  $1.2 \pm 0.4$  following an intravenous dosage of  $10 \text{ mg/m}^2$  (0.62 times the approved recommended dosage) and  $2.8 \pm 1.9 \text{ mcg/mL}$  following an intravenous dosage of  $20 \text{ mg/m}^2$  (1.25 times the approved recommended dosage) in myeloma patients.

#### *Distribution*

The melphalan steady-state volume of distribution is 0.5 L/kg. Melphalan penetration into cerebrospinal fluid (CSF) is low.

The mean melphalan plasma protein binding ranges from 53% to 92% with approximately 30% irreversible (covalent). Serum albumin accounts for approximately 40% to 60% and  $\alpha_1$ -acid glycoprotein approximately 20% of the plasma protein binding.

#### *Elimination*

The melphalan elimination half-life is approximately 75 minutes. Mean total body melphalan clearance varied among studies, but typical values of approximately 7 to 9 mL/min/kg ( $250$  to  $325 \text{ mL/min/m}^2$ ) were observed.

#### Metabolism

Melphalan primarily metabolized by hydrolysis to monohydroxymelphalan and dihydroxymelphalan, which are inactive.

#### Excretion

Following a radiolabeled dose of intravenous melphalan in 9 patients with cancer, the mean ( $\pm$  SD) excretion of melphalan over 24 hours was  $13\% \pm 5.4\%$  of the total dose.

#### *Specific Populations*

##### Patients with renal Impairment

Although melphalan renal clearance appears to be low, one study reported an increase in the occurrence of severe leukopenia in patients with BUN levels  $\geq 30 \text{ mg/dL}$  after 10 weeks of therapy. A 50% reduction in the IV melphalan dosage decreased the incidence

of severe bone marrow suppression in the latter portion of this study.

### *Drug Interaction Studies*

#### Cyclosporine

Patients treated with a single dose of intravenous melphalan followed by standard oral doses of cyclosporine were reported to develop severe renal failure.

#### Immunoglobulins

Interactions between melphalan and immunoglobulins are negligible.

## **13 NONCLINICAL TOXICOLOGY**

### **13.1 Carcinogenesis, Mutagenesis, Impairment of Fertility**

Adequate and well-controlled carcinogenicity studies with melphalan have not been conducted in animals. However, intraperitoneal (IP) administration of melphalan in rats (5.4 to 10.8 mg/m<sup>2</sup>) and in mice (2.25 to 4.5 mg/m<sup>2</sup>) 3 times per week for 6 months followed by 12 months post-dose observation produced peritoneal sarcoma and lung tumors, respectively.

Intramuscular administration of melphalan at 6 and 60 mg/m<sup>2</sup> produced structural aberrations of the chromatid and chromosomes in bone marrow cells of Wistar rats.

## **14 CLINICAL STUDIES**

### **Palliative Treatment of Patients with Multiple Myeloma**

A randomized trial compared prednisone plus intravenous melphalan to prednisone plus oral melphalan in the treatment of myeloma. Both arms received oral prednisone starting at 0.8 mg/kg/day with doses tapered over 6 weeks. Melphalan doses in each arm were: Arm 1: Oral melphalan 0.15 mg/kg/day x 7 followed by 0.05 mg/kg/day when WBC began to rise. Arm 2: Intravenous melphalan 16 mg/m<sup>2</sup> q 2 weeks x 4 (over 6 weeks) followed by the same dose every 4 weeks.

One hundred seven patients were randomized to the oral melphalan arm and 203 patients to the intravenous melphalan arm. More patients had a poor-risk classification (58% versus 44%) and high tumor load (51% versus 34%) on the oral compared to the intravenous arm (P<0.04). Response rates at week 22 are shown in the following table:

**Table 2. Response Rates at Week 22 In Patients with Multiple Myeloma Who Received Oral or Intravenous Melphalan with Prednisone**

<b>Initial Arm</b>	<b>Evaluable Patients</b>	<b>Responders n (%)</b>	<b>P</b>
Oral melphalan	100	44 (44%)	P>0.2
Intravenous melphalan	195	74 (38%)	

Because of changes in protocol design after week 22, other efficacy parameters such

as response duration and survival cannot be compared.

## **15 REFERENCES**

1. OSHA Hazardous Drugs <https://www.osha.gov/hazardous-drugs>

## **16 HOW SUPPLIED/STORAGE AND HANDLING**

### How Supplied

IVRA (melphalan) injection is a clear colorless to yellow solution supplied in a carton containing one 90 mg/mL amber glass multiple-dose vial for dilution. (NDC 60505-6414-1).

### Storage and Handling

Store IVRA refrigerated at 2°C to 8°C (36°F to 46°F). IVRA is light sensitive. Retain in original carton when not in use.

IVRA is a hazardous drug<sup>1</sup>. Follow special handling and disposal procedures<sup>1</sup>.

## **17 PATIENT COUNSELING INFORMATION**

### Low Blood Cell Counts

Advise patients to report any signs or symptoms of thrombocytopenia, leukopenia (neutropenia and lymphopenia), and anemia. Inform patients of the need for routine blood counts [see *Warnings and Precautions (5.1)*].

### Mucositis

Inform patients of the signs and symptoms of mucositis. Instruct patients on ways to reduce the risk of its development, and on ways to maintain nutrition and control discomfort if it occurs [see *Warnings and Precautions (5.2)*].

### Allergic Reactions

Advise patients to immediately report symptoms of hypersensitivity reactions including changes involving the skin, breathing or heart rate, so that antihistamine or corticosteroid therapy can be administered [see *Warnings and Precautions (5.4)*].

### Secondary Malignancies

Advise patients of the potential long-term risks related to secondary malignancy [see *Warnings and Precautions (5.5)*].

### Embryo Fetal Toxicity

- Advise pregnant women of the potential risk to a fetus [see *Warnings and Precautions (5.6) and Use in Specific Populations (8.1)*].
- Advise females of reproductive potential to use effective contraception during and for 6 months after treatment with IVRA. Advise males with female partners of reproductive potential to use effective contraception during treatment with IVRA and for 3 months after the last dose. Advise females to contact their healthcare provider if they become pregnant, or if pregnancy is suspected, while taking IVRA [see

*Warnings and Precautions (5.6) and Use in Specific Populations (8.1)].*

- Inform females of reproductive potential about the risk for infertility. Advise males that reversible and irreversible testicular suppression have been reported [see *Warnings and Precautions (5.7)*].
- Advise women not to breastfeed during treatment with IVRA and for 1 week following the last dose [see *Use in Specific Populations (8.2)*].

Manufactured by:

AqVida GmbH

23942 Dassow Germany

Manufactured for:

Apotex Corp.

Weston, Florida, USA 33326

Rev 1

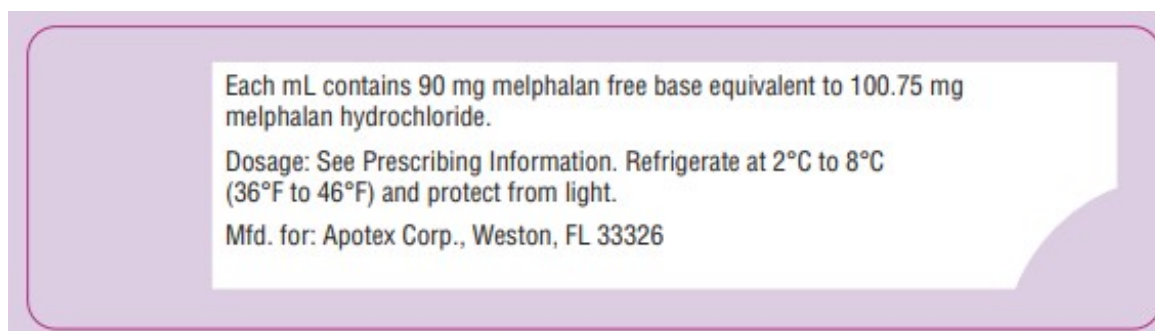
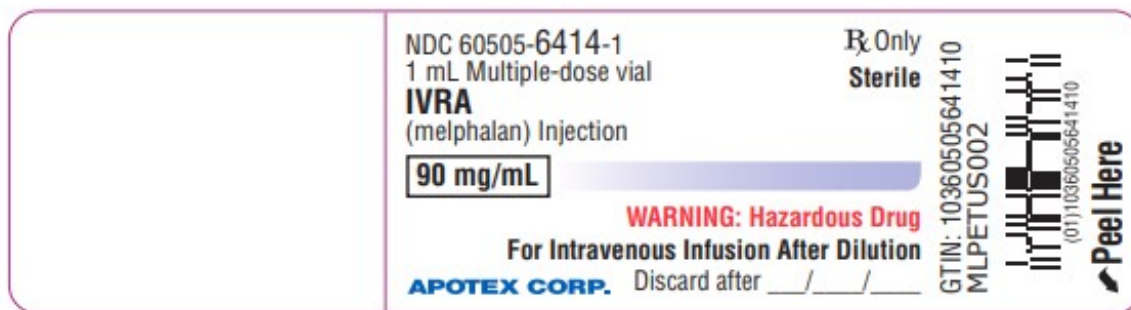
## PRINCIPAL DISPLAY PANEL

### IVRA (melphalan) Injection

### 90 mg/mL- Bottle label

### Multiple-Dose Vial

### NDC# 60505-6414-1



## PRINCIPAL DISPLAY PANEL

### IVRA (melphalan) Injection

### 90 mg/mL - Bottle Carton

# Multiple-Dose Vial

NDC# 60505-6414-1



## IVRA

melphalan hcl injection, solution

### Product Information

<b>Product Type</b>	HUMAN PRESCRIPTION DRUG	<b>Item Code (Source)</b>	NDC:60505-6414
<b>Route of Administration</b>	INTRAVENOUS		

**Active Ingredient/Active Moiety**

Ingredient Name	Basis of Strength	Strength
<b>MELPHALAN HYDROCHLORIDE</b> (UNII: 1VXP4V453T) (Melphalan - UNII:Q41OR9510P)	Melphalan	90 mg in 1 mL

**Inactive Ingredients**

Ingredient Name	Strength
<b>PROPYLENE GLYCOL</b> (UNII: 6DC9Q167V3)	170 mg in 1 mL
<b>MONOTHIOGLYCEROL</b> (UNII: AAO1P0WSXJ)	5 mg in 1 mL
<b>WATER</b> (UNII: 059QF0K00R)	

**Packaging**

#	Item Code	Package Description	Marketing Start Date	Marketing End Date
1	NDC:60505-6414-1	1 in 1 CARTON	03/19/2025	
1		3 mL in 1 VIAL, MULTI-DOSE; Type 0: Not a Combination Product		

**Marketing Information**

Marketing Category	Application Number or Monograph Citation	Marketing Start Date	Marketing End Date
NDA	NDA217110	03/19/2025	

**Labeler** - Apotex Corp (845263701)**Registrant** - Apotex Inc (209429182)**Establishment**

Name	Address	ID/FEI	Business Operations
AqVida GmbH		342875539	analysis(60505-6414) , manufacture(60505-6414)

Revised: 3/2025

Apotex Corp