

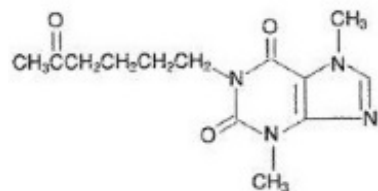
PENTOXIFYLLINE- pentoxifylline tablet, extended release **Oceanside Pharmaceuticals**

PENTOXIFYLLINE **Extended-Release Tablets,** **400 mg**

DESCRIPTION

Pentoxifylline Extended-Release Tablets for oral administration, contain 400 mg of the active drug and the following inactive ingredients: hydroxyethyl cellulose, magnesium stearate, povidone, and talc in an extended-release formulation. Pentoxifylline is a tri-substituted xanthine derivative designated chemically as 1-(5-oxohexyl)-3,7-dimethylxanthine that, unlike theophylline, is a hemorrheologic agent, i.e. an agent that affects blood viscosity. Pentoxifylline is soluble in water and ethanol, and sparingly soluble in toluene.

The chemical structure is:



Molecular weight: 278.31

Molecular formula: C₁₃H₁₈N₄O₃

CLINICAL PHARMACOLOGY

Mode of Action

Pentoxifylline and its metabolites improve the flow properties of blood by decreasing its viscosity. In patients with chronic peripheral arterial disease, this increases blood flow to the affected microcirculation and enhances tissue oxygenation. The precise mode of action of pentoxifylline and the sequence of events leading to clinical improvement are still to be defined. Pentoxifylline administration has been shown to produce dose-related hemorrheologic effects, lowering blood viscosity, and improving erythrocyte flexibility. Leukocyte properties of hemorrheologic importance have been modified in animal and *in vitro* human studies. Pentoxifylline has been shown to increase leukocyte deformability and to inhibit neutrophil adhesion and activation. Tissue oxygen levels have been shown to be significantly increased by therapeutic doses of pentoxifylline in patients with peripheral arterial disease.

Pharmacokinetics and Metabolism

After oral administration in aqueous solution pentoxifylline is almost completely absorbed. It undergoes a first-pass effect and the various metabolites appear in plasma very soon after dosing. Peak plasma levels of the parent compound and its metabolites are reached within 1 hour. The major metabolites are Metabolite I (1-[5-hydroxyhexyl]-3,7-dimethylxanthine) and Metabolite V (1-[3-carboxypropyl]-3,7-dimethylxanthine), and plasma levels of these metabolites are 5 and 8 times greater, respectively, than pentoxifylline.

Following oral administration of aqueous solutions containing 100 to 400 mg of pentoxifylline, the

pharmacokinetics of the parent compound and Metabolite I are dose-related and not proportional (non-linear), with half-life and area under the blood-level time curve (AUC) increasing with dose. The elimination kinetics of Metabolite V are not dose-dependent. The apparent plasma half-life of pentoxifylline varies from 0.4 to 0.8 hours and the apparent plasma half-lives of its metabolites vary from 1 to 1.6 hours. There is no evidence of accumulation or enzyme induction (Cytochrome P450) following multiple oral doses.

Excretion is almost totally urinary; the main biotransformation product is Metabolite V. Essentially no parent drug is found in the urine. Despite large variations in plasma levels of parent compound and its metabolites, the urinary recovery of Metabolite V is consistent and shows dose proportionality. Less than 4% of the administered dose is recovered in feces. Food intake shortly before dosing delays absorption of an immediate-release dosage form but does not affect total absorption. The pentoxifylline AUC was increased and elimination rate decreased in an older population (60-68 years, n=6) compared to younger individuals (22-30 years, n=6) (see **PRECAUTIONS, Geriatric Use**).

After administration of the 400 mg pentoxifylline extended-release Tablet, plasma levels of the parent compound and its metabolites reach their maximum within 2 to 4 hours and remain constant over an extended period of time. Coadministration of pentoxifylline extended-release tablets with meals resulted in an increase in mean AUC and C_{max} of about 1.1- and 1.3-fold for pentoxifylline, respectively. C_{max} for Metabolite I also increased about 1.2-fold. The extended release of pentoxifylline from the tablet eliminates peaks and troughs in plasma levels for improved gastrointestinal tolerance.

Patients with Hepatic Impairment

In patients with mild to moderate liver impairment, AUC and C_{max} of pentoxifylline increased 6.5 and 7.5 fold, respectively, after a single 400 mg dose of Pentoxifylline Extended-Release Tablets. AUC and C_{max} of the active Metabolite I also increased 6.9 and 8.2 fold, respectively, in hepatic impaired subjects. Pentoxifylline Extended-Release Tablets have not been studied in patients with severe hepatic failure.

Patients with Renal Impairment

In patients with mild, moderate, or severe renal impairment the exposure to pentoxifylline and its active Metabolite I is not increased. In contrast, AUC_{0-tss} and C_{max} of the active Metabolite V in patients with mild to moderate renal impairment increased 2.4 and 2.1-fold, respectively, with a 400 mg TID regimen of pentoxifylline extended-release tablets. In severe renal impairment AUC_{0-tss} and C_{max} of the active Metabolite V increased 12.9 and 10.6 fold, respectively, with a 400 mg pentoxifylline extended-release tablets TID regimen. The increase in exposure to Metabolite V is only slightly smaller in both renal impairment groups if pentoxifylline extended-release tablets are administered BID.

INDICATIONS AND USAGE

Pentoxifylline Extended-Release Tablets are indicated for the treatment of patients with intermittent claudication on the basis of chronic occlusive arterial disease of the limbs. Pentoxifylline Extended-Release Tablets can improve function and symptoms but is not intended to replace more definitive therapy, such as surgical bypass, or removal of arterial obstructions when treating peripheral vascular disease.

CONTRAINDICATIONS

Pentoxifylline Extended-Release Tablets should not be used in patients with recent cerebral and/or retinal hemorrhage or in patients who have previously exhibited intolerance to this product or methylxanthines such as caffeine, theophylline, and theobromine.

PRECAUTIONS

General

At the first sign of anaphylactic/anaphylactoid reaction, pentoxifylline must be discontinued.

Patients with chronic occlusive arterial disease of the limbs frequently show other manifestations of arteriosclerotic disease. Pentoxifylline has been used safely for treatment of peripheral arterial disease in patients with concurrent coronary artery and cerebrovascular diseases, but there have been occasional reports of angina, hypotension, and arrhythmia. Controlled trials do not show that pentoxifylline causes such adverse effects more often than placebo, but, as it is a methylxanthine derivative, it is possible some individuals will experience such responses. Patients on Warfarin should have more frequent monitoring of prothrombin times, while patients with other risk factors complicated by hemorrhage (e.g., recent surgery, peptic ulceration, cerebral and/or retinal bleeding) should have periodic examinations for bleeding including, hematocrit and/or hemoglobin.

In patients with hepatic or renal impairment, the exposure to pentoxifylline and/or active metabolites is increased. The consequences of the increase in drug exposure are not known (see **Pharmacokinetics and Metabolism** and **DOSAGE AND ADMINISTRATION**).

Drug Interactions

Bleeding has been reported in patients treated with pentoxifylline extended-release tablets with or without concomitant NSAIDs, anticoagulants, or platelet aggregation inhibitors. Increased prothrombin time has been reported in patients concomitantly treated with pentoxifylline and vitamin K antagonists. Monitoring of anticoagulant activity in these patients is recommended when pentoxifylline is introduced or the dose is changed.

Concomitant administration of pentoxifylline and theophylline-containing drugs leads to increased theophylline levels and theophylline toxicity in some individuals. Monitor theophylline levels when starting pentoxifylline extended-release tablets or changing dose.

Concomitant administration of strong CYP1A2 inhibitors (including e.g. ciprofloxacin or fluvoxamine) may increase the exposure to pentoxifylline (see ADVERSE REACTIONS). Pentoxifylline has been used concurrently with antihypertensive drugs, beta blockers, digitalis, diuretics, and antiarrhythmics, without observed problems. Small decreases in blood pressure have been observed in some patients treated with pentoxifylline; periodic systemic blood pressure monitoring is recommended for patients receiving concomitant antihypertensive therapy. If indicated, dosage of the antihypertensive agents should be reduced.

Postmarketing cases of increased anticoagulant activity have been reported in patients concomitantly treated with pentoxifylline and vitamin K antagonists. Monitoring of anticoagulant activity in these patients is recommended when pentoxifylline is introduced or the dose is changed.

Concomitant administration with cimetidine is reported to increase the average steady state plasma concentration of pentoxifylline (~ 25%) and Metabolite I (~ 30%).

Carcinogenesis, Mutagenesis, and Impairment of Fertility

Long-term studies of the carcinogenic potential of pentoxifylline were conducted in mice and rats by dietary administration of the drug at doses up to 450 mg/kg (approximately 19 times the maximum recommended human daily dose (MRHD) in both species when based on body weight; 1.5 times the MRHD in the mouse and 3.3 times the MRHD in the rat when based on body surface area). In mice, the drug was administered for 18 months, whereas in rats, the drug was administered for 18 months followed by an additional 6 months without drug exposure. In the rat study, there was a statistically significant increase in benign mammary fibroadenomas in females of the 450 mg/kg group. The relevance of this finding to human use is uncertain. Pentoxifylline was devoid of mutagenic activity in various strains of *Salmonella* (Ames test) and in cultured mammalian cells (unscheduled DNA synthesis test) when tested in the presence and absence of metabolic activation. It was also negative in the *in vivo* mouse micronucleus test.

Pregnancy

Teratogenicity studies have been performed in rats and rabbits using oral doses up to 576 and 264 mg/kg, respectively. On a weight basis, these doses are 24 and 11 times the maximum recommended human daily dose (MRHD); on a body-surface-area basis, they are 4.2 and 3.5 times the MRHD. No evidence of fetal malformation was observed. Increased resorption was seen in rats of the 576 mg/kg group. There are no adequate and well controlled studies in pregnant women. Pentoxifylline should be used during pregnancy only if the potential benefit justifies the potential risk to the fetus.

Nursing Mothers

Pentoxifylline and its metabolites are excreted in human milk. Because of the potential for tumorigenicity shown for pentoxifylline in rats, a decision should be made whether to discontinue nursing or discontinue the drug, taking into account the importance of the drug to the mother.

Pediatric Use

Safety and effectiveness in pediatric patients have not been established.

Geriatric Use

Clinical studies of pentoxifylline did not include sufficient numbers of subjects aged 65 and over to determine whether they respond differently from younger subjects. Other reported clinical experience has not identified differences in responses between the elderly and younger patients. In general, dose selection for an elderly patient should be cautious, usually starting at the low end of the dosing range, reflecting the greater frequency of decreased hepatic, renal, or cardiac function, and of concomitant disease or other drug therapy.

The active Metabolite V is known to be substantially excreted by the kidney, and the risk of toxic reactions to this drug may be greater in patients with impaired renal function. Because elderly patients are more likely to have decreased renal function, care should be taken in dose selection, and it may be useful to monitor renal function.

ADVERSE REACTIONS

Clinical trials were conducted using either extended-release pentoxifylline tablets for up to 60 weeks or immediate-release pentoxifylline capsules for up to 24 weeks. Dosage ranges in the tablet studies were 400 mg bid to tid and in the capsule studies, 200 to 400 mg tid. The table summarizes the incidence (in percent) of adverse reactions considered drug related, as well as the numbers of patients who received extended-release pentoxifylline tablets, immediate-release pentoxifylline capsules, or the corresponding placebos. The incidence of adverse reactions was higher in the capsule studies (where dose-related increases were seen in digestive and nervous system side effects) than in the tablet studies. Studies with the capsule include domestic experience, whereas studies with the extended-release tablets were conducted outside the U.S.

The table indicates that in the tablet studies few patients discontinued because of adverse effects.

INCIDENCE (%) OF SIDE EFFECTS

	<u>Extended-Release Tablets</u>		<u>Immediate-Release Capsules</u>	
	Commercially Available		Used Only for Controlled Clinical Trials	
	Pentoxifylline Extended-Release Tablets	Placebo	Pentoxifylline Immediate-Release Capsules	Placebo

(Numbers of Patients at Risk)	(321)	(128)	(177)	(138)
Discontinued for Side Effect	3.1	0	9.6	7.2
CARDIOVASCULAR SYSTEM				
Angina/Chest Pain	0.3	—	1.1	2.2
Arrhythmia/Palpitation	—	—	1.7	0.7
Flushing	—	—	2.3	0.7
DIGESTIVE SYSTEM				
Abdominal Discomfort	—	—	4.0	1.4
Belching/Flatus/Bloating	0.6	—	9.0	3.6
Diarrhea	—	—	3.4	2.9
Dyspepsia	2.8	4.7	9.6	2.9
Nausea	2.2	0.8	28.8	8.7
Vomiting	1.2	—	4.5	0.7
NERVOUS SYSTEM				
Agitation/Nervousness	—	—	1.7	0.7
Dizziness	1.9	3.1	11.9	4.3
Drowsiness	—	—	1.1	5.8
Headache	1.2	1.6	6.2	5.8
Insomnia	—	—	2.3	2.2
Tremor	0.3	0.8	—	—
Blurred Vision	—	—	2.3	1.4

Pentoxifylline Extended-Release Tablets has been marketed in Europe and elsewhere since 1972. In addition to the above symptoms, the following have been reported spontaneously since marketing or occurred in other clinical trials with an incidence of less than 1%; the causal relationship was uncertain:

Cardiovascular - dyspnea, edema, hypotension.

Digestive - anorexia, cholecystitis, constipation, dry mouth/thirst.

Nervous - anxiety, confusion, depression, seizures, aseptic meningitis.

Respiratory - epistaxis, flu-like symptoms, laryngitis, nasal congestion.

Skin and Appendages - brittle fingernails, pruritus, rash, urticaria, angioedema.

Special Senses - blurred vision, conjunctivitis, earache, scotoma.

Miscellaneous - bad taste, excessive salivation, leukopenia, malaise, sore throat/swollen neck glands, weight change.

A few rare events have been reported spontaneously worldwide since marketing in 1972. Although they occurred under circumstances in which a causal relationship with pentoxifylline could not be established, they are listed to serve as information for physicians. Cardiovascular - angina, arrhythmia, tachycardia. Digestive - hepatitis, jaundice, cholestasis, increased liver enzymes; and Hemic and Lymphatic - decreased serum fibrinogen, pancytopenia, aplastic anemia, leukemia, purpura, thrombocytopenia. Immune system disorders - anaphylactic reaction, anaphylactoid reaction, anaphylactic shock.

To report SUSPECTED ADVERSE REACTIONS, contact Oceanside Pharmaceuticals at 1-800-321-4576 or FDA at 1-800-FDA-1088 or www.fda.gov/medwatch.

OVERDOSAGE

Overdosage with pentoxifylline extended-release tablets has been reported in pediatric patients and adults. Symptoms appear to be dose-related. A report from a poison control center on 44 patients taking overdoses of enteric-coated pentoxifylline extended-release tablets noted that symptoms usually occurred 4 to 5 hours after ingestion and lasted about 12 hours. The highest amount ingested was 80 mg/kg; flushing, hypotension, convulsions, somnolence, loss of consciousness, fever, and agitation occurred. All patients recovered. In addition to symptomatic treatment and gastric lavage, special attention must be given to supporting respiration, maintaining systemic blood pressure, and controlling convulsions. Activated charcoal has been used to absorb pentoxifylline in patients who have overdosed.

DOSAGE AND ADMINISTRATION

The usual dosage of pentoxifylline in extended-release tablet form is one tablet (400 mg) three times a day with meals.

While the effect of pentoxifylline may be seen within 2 to 4 weeks, it is recommended that treatment be continued for at least 8 weeks. Efficacy has been demonstrated in double-blind clinical studies of 6 months duration.

Digestive and central nervous system side effects are dose-related. If patients develop these effects it is recommended that the dosage be lowered to one tablet twice a day (800 mg/day). If side effects persist at this lower dosage, the administration of pentoxifylline extended-release tablets should be discontinued.

In patients with severe renal impairment (creatinine clearance below 30 mL/min) reduce dose to 400 mg once a day. Dosing information cannot be provided for patients with hepatic impairment.

HOW SUPPLIED

Pentoxifylline Extended-Release Tablets are available for oral administration as 400 mg white, oblong, compressed tablets, engraved with "BVF" on one side and "0117" on the other; tablets are unscored; supplied in bottles of 100 (NDC 68682-101-10) and 500 (NDC 68682-101-50).

Store at 20° to 25°C (68° to 77°F); excursions permitted to 15° to 30°C (59° to 86°F) [see USP Controlled Room Temperature].

Dispense in well-closed, light-resistant containers with safety closures.

Keep out of reach of children.

Distributed by:

Oceanside Pharmaceuticals, a division of
Bausch Health US, LLC
Bridgewater, NJ 08807 USA

Manufactured by:

Bausch Health Companies Inc.
Steinbach, MB R5G 1Z7, Canada

© 2020 Bausch Health Companies Inc. or its affiliates

9408603 20002804

Revised: 11/2019

PRINCIPAL DISPLAY PANEL - 400 mg Bottle Label

NDC 68682-101-10

Rx only

PENTOXIFYLLINE
Extended-Release
Tablets
400 mg

Take with meals

100 TABLETS

OCEANSIDE
PHARMACEUTICALS



PENTOXIFYLLINE

pentoxifylline tablet, extended release

Product Information

Product Type	HUMAN PRESCRIPTION DRUG	Item Code (Source)	NDC:68682-101
Route of Administration	ORAL		

Active Ingredient/Active Moiety

Ingredient Name	Basis of Strength	Strength
PENTOXIFYLLINE (UNII: SD6QCT3TSU) (PENTOXIFYLLINE - UNII:SD6QCT3TSU)	PENTOXIFYLLINE	400 mg

Inactive Ingredients

Ingredient Name	Strength
ISOPROPYL ALCOHOL (UNII: ND2M416302)	
MAGNESIUM STEARATE (UNII: 70097M6I30)	
TALC (UNII: 7SEV7J4R1U)	
POVIDONE, UNSPECIFIED (UNII: FZ989GH94E)	

Product Characteristics

Color	WHITE	Score	no score
Shape	OVAL (oblong)	Size	16 mm
Flavor		Imprint Code	BVF;0117
Contains			

Packaging

#	Item Code	Package Description	Marketing Start Date	Marketing End Date
1	NDC:68682-101-10	100 in 1 BOTTLE; Type 0: Not a Combination Product	08/22/2014	
2	NDC:68682-101-50	500 in 1 BOTTLE; Type 0: Not a Combination Product	08/22/2014	

Marketing Information

Marketing Category	Application Number or Monograph Citation	Marketing Start Date	Marketing End Date
ANDA	ANDA075028	08/22/2014	

Labeler - Oceanside Pharmaceuticals (832011691)

Establishment

Name	Address	ID/FEI	Business Operations
Bausch Health Companies Inc.		253292734	MANUFACTURE(68682-101)

Revised: 11/2019

Oceanside Pharmaceuticals