

**DEXMETHYLPHENIDATE HYDROCHLORIDE- dexamethylphenidate  
hydrochloride capsule, extended release  
Bryant Ranch Prepack**

-----

**HIGHLIGHTS OF PRESCRIBING INFORMATION**

These highlights do not include all the information needed to use DEXMETHYLPHENIDATE HYDROCHLORIDE EXTENDED-RELEASE CAPSULES safely and effectively. See full prescribing information for DEXMETHYLPHENIDATE HYDROCHLORIDE EXTENDED-RELEASE CAPSULES.

**DEXMETHYLPHENIDATE HYDROCHLORIDE Extended-Release Capsules, for oral use, CII  
Initial U.S. Approval: 2005**

**WARNING: ABUSE, MISUSE, AND ADDICTION**

*See full prescribing information for complete boxed warning.*

Dexamethylphenidate hydrochloride extended-release has a high potential for abuse and misuse, which can lead to the development of a substance use disorder, including addiction. Misuse and abuse of CNS stimulants, including dexamethylphenidate hydrochloride extended-release, can result in overdose and death (5.1, 9.2, 10).

- Before prescribing dexamethylphenidate hydrochloride extended-release, assess each patient's risk for abuse, misuse, and addiction.
- Educate patients and their families about these risks, proper storage of the drug, and proper disposal of any unused drug.
- Throughout treatment, reassess each patient's risk and frequently monitor for signs and symptoms of abuse, misuse, and addiction.

-----**RECENT MAJOR CHANGES**-----

Boxed Warning	10/2023
Dosage and Administration (2.1, 2.2)	10/2023
Warnings and Precautions (5.1, 5.2, 5.8, 5.9, 5.10)	10/2023

-----**INDICATIONS AND USAGE**-----

Dexamethylphenidate hydrochloride extended-release is a central nervous system (CNS) stimulant indicated for the treatment of Attention Deficit Hyperactivity Disorder (ADHD) (1).

-----**DOSAGE AND ADMINISTRATION**-----

- Patients new to methylphenidate: Recommended starting dose is 5 mg once daily for pediatric patients and 10 mg once daily for adults with or without food in the morning (2.2).
- Patients currently on methylphenidate: Dexamethylphenidate hydrochloride extended-release dosage is half (1/2) the current total daily dosage of methylphenidate (2.2).
- Patients currently on dexamethylphenidate immediate-release tablets: Give the same daily dose of dexamethylphenidate hydrochloride extended-release (2.2).
- Titrate weekly in increments of 5 mg in pediatric patients and 10 mg in adult patients (2.2).
- Maximum recommended daily dose: 30 mg in pediatric patients and 40 mg in adults (2.2).
- Capsules may be swallowed whole or opened and the entire contents sprinkled on applesauce (2.3).

-----**DOSAGE FORMS AND STRENGTHS**-----

Extended-Release Capsules: 5 mg, 10 mg, 15 mg, 20 mg, 25 mg, 30 mg, 35 mg, and 40 mg of dexamethylphenidate hydrochloride (3).

-----**CONTRAINDICATIONS**-----

- Known hypersensitivity to methylphenidate or other components of dexamethylphenidate hydrochloride extended-release (4).
- Concurrent treatment with a monoamine oxidase inhibitor (MAOI), or use of an MAOI within the preceding 14 days (4).

-----**WARNINGS AND PRECAUTIONS**-----

- *Risks to Patients with Serious Cardiac Disease:* Avoid use in patients with known structural cardiac abnormalities, cardiomyopathy, serious cardiac arrhythmias, coronary artery disease, or other serious cardiac disease (5.2).
- *Increased Blood Pressure and Heart Rate:* Monitor blood pressure and pulse (5.3).
- *Psychiatric Adverse Reactions:* Prior to initiating dexamethylphenidate hydrochloride extended-release, screen patients for risk factors for developing a manic episode. If new psychotic or manic symptoms occur, consider discontinuing dexamethylphenidate hydrochloride extended-release (5.4).
- *Priapism:* If abnormally sustained or frequent and painful erections occur, patients should seek immediate medical attention (5.5).
- *Peripheral Vasculopathy, including Raynaud's Phenomenon:* Careful observation for digital changes is necessary during dexamethylphenidate hydrochloride extended-release treatment. Further clinical evaluation (e.g., rheumatology referral) may be appropriate for patients who develop signs or

symptoms of peripheral vasculopathy (5.6).

- *Long-Term Suppression of Growth in Pediatric Patients*: Closely monitor growth (height and weight) in pediatric patients. Pediatric patients not growing or gaining height or weight as expected may need to have their treatment interrupted (5.7).
- *Acute Angle Closure Glaucoma*: Dexmethylphenidate hydrochloride extended-release -treated patients considered at risk for acute angle closure glaucoma (e.g., patients with significant hyperopia) should be evaluated by an ophthalmologist (5.8).
- *Increased Intraocular Pressure (IOP) and Glaucoma*: Prescribe dexmethylphenidate hydrochloride extended-release to patients with open-angle glaucoma or abnormally increased IOP only if the benefit of treatment is considered to outweigh the risk. Closely monitor patients with a history of increased IOP or open angle glaucoma (5.9).
- *Motor and Verbal Tics, and Worsening of Tourette's Syndrome*: Before initiating dexmethylphenidate hydrochloride extended-release, assess the family history and clinically evaluate patients for tics or Tourette's syndrome. Regularly monitor patients for the emergence or worsening of tics or Tourette's syndrome. Discontinue treatment if clinically appropriate (5.10).

---

#### ADVERSE REACTIONS

---

The most common adverse reactions (greater than or equal to 5% and twice the rate of placebo):

- Pediatric patients 6 to 17 years: dyspepsia, decreased appetite, headache, and anxiety (6.1).
- Adults: dry mouth, dyspepsia, headache, pharyngolaryngeal pain, and anxiety (6.1).

**To report SUSPECTED ADVERSE REACTIONS, contact Endo at 1-800-828-9393 or FDA at 1-800-FDA-1088 or [www.fda.gov/medwatch](http://www.fda.gov/medwatch).**

---

#### DRUG INTERACTIONS

---

- *Antihypertensive Drugs*: Monitor blood pressure. Adjust dosage of antihypertensive drug as needed (7.1).

See 17 for PATIENT COUNSELING INFORMATION and Medication Guide.

Revised: 8/2024

---

## FULL PRESCRIBING INFORMATION: CONTENTS\*

### WARNING: ABUSE, MISUSE, AND ADDICTION

### 1 INDICATIONS AND USAGE

### 2 DOSAGE AND ADMINISTRATION

#### 2.1 Pretreatment Screening

#### 2.2 Recommended Dosage

#### 2.3 Administration Instructions

#### 2.4 Dosage Reduction and Discontinuation

### 3 DOSAGE FORMS AND STRENGTHS

### 4 CONTRAINDICATIONS

### 5 WARNINGS AND PRECAUTIONS

#### 5.1 Abuse, Misuse, and Addiction

#### 5.2 Risks to Patients With Serious Cardiac Disease

#### 5.3 Increased Blood Pressure and Heart Rate

#### 5.4 Psychiatric Adverse Reactions

#### 5.5 Priapism

#### 5.6 Peripheral Vasculopathy, Including Raynaud's Phenomenon

#### 5.7 Long-Term Suppression of Growth in Pediatric Patients

#### 5.8 Acute Angle Closure Glaucoma

#### 5.9 Increased Intraocular Pressure and Glaucoma

#### 5.10 Motor and Verbal Tics, and Worsening of Tourette's Syndrome

### 6 ADVERSE REACTIONS

#### 6.1 Clinical Trials Experience

#### 6.2 Postmarketing Experience

### 7 DRUG INTERACTIONS

#### 7.1 Clinically Important Drug Interactions with Dexmethylphenidate Hydrochloride Extended-Release

### 8 USE IN SPECIFIC POPULATIONS

#### 8.1 Pregnancy

- 8.2 Lactation
- 8.4 Pediatric Use
- 8.5 Geriatric Use
- 9 DRUG ABUSE AND DEPENDENCE
  - 9.1 Controlled Substance
  - 9.2 Abuse
  - 9.3 Dependence
- 10 OVERDOSAGE
- 11 DESCRIPTION
- 12 CLINICAL PHARMACOLOGY
  - 12.1 Mechanism of Action
  - 12.2 Pharmacodynamics
  - 12.3 Pharmacokinetics
- 13 NONCLINICAL TOXICOLOGY
  - 13.1 Carcinogenesis, Mutagenesis, and Impairment of Fertility
- 14 CLINICAL STUDIES
  - 14.1 Pediatric Patients
  - 14.2 Adult Patients
- 16 HOW SUPPLIED/STORAGE AND HANDLING
- 17 PATIENT COUNSELING INFORMATION

\* Sections or subsections omitted from the full prescribing information are not listed.

---

## FULL PRESCRIBING INFORMATION

### WARNING: ABUSE, MISUSE, AND ADDICTION

Dexmethylphenidate hydrochloride extended-release has a high potential for abuse and misuse, which can lead to the development of a substance use disorder, including addiction. Misuse and abuse of CNS stimulants, including dexmethylphenidate hydrochloride extended-release, can result in overdose and death [see *Overdosage (10)*], and this risk is increased with higher doses or unapproved methods of administration, such as snorting or injection.

Before prescribing dexmethylphenidate hydrochloride extended-release, assess each patient's risk for abuse, misuse, and addiction. Educate patients and their families about these risks, proper storage of the drug, and proper disposal of any unused drug. Throughout dexmethylphenidate hydrochloride extended-release treatment, reassess each patient's risk of abuse, misuse, and addiction and frequently monitor for signs and symptoms of abuse, misuse, and addiction [see *Warnings and Precautions (5.1), Drug Abuse and Dependence (9.2)*].

## 1 INDICATIONS AND USAGE

Dexmethylphenidate hydrochloride extended-release is indicated for the treatment of Attention Deficit Hyperactivity Disorder (ADHD) [see *Clinical Studies (14)*].

## 2 DOSAGE AND ADMINISTRATION

### 2.1 Pretreatment Screening

Prior to treating patients with dexamethylphenidate hydrochloride extended-release, assess:

- for the presence of cardiac disease (i.e., perform a careful history, family history of sudden death or ventricular arrhythmia, and physical exam) [see *Warnings and Precautions* (5.2)].
- the family history and clinically evaluate patients for motor or verbal tics or Tourette's syndrome before initiating dexamethylphenidate hydrochloride extended-release [see *Warnings and Precautions* (5.10)].

## 2.2 Recommended Dosage

### Patients New to Methylphenidate

The recommended starting dosage of dexamethylphenidate hydrochloride extended-release for patients who are not currently taking dexamethylphenidate or racemic methylphenidate, or for patients who are on stimulants other than methylphenidate are:

- Pediatric patients: Start with 5 mg orally once daily in the morning with or without food.
- Adult patients: Start with 10 mg orally once daily in the morning with or without food.

### Patients Currently on Methylphenidate

The recommended starting dose of dexamethylphenidate hydrochloride extended-release for patients currently using methylphenidate is half (1/2) the total daily dose of racemic methylphenidate.

Patients currently using dexamethylphenidate immediate-release tablets may be given the same daily dose of dexamethylphenidate hydrochloride extended-release.

### Titration Schedule

The dose may be titrated weekly in increments of 5 mg in pediatric patients and 10 mg in adult patients. The dose should be individualized according to the needs and response of the patient. Daily doses above 30 mg in pediatrics and 40 mg in adults have not been studied and are not recommended.

## 2.3 Administration Instructions

Dexamethylphenidate hydrochloride extended-release is administered orally and may be taken whole or the capsule may be opened and the entire contents sprinkled onto applesauce. If the patient is using the sprinkled administration method, the sprinkled applesauce should be consumed immediately; it should not be stored. Patients should take the applesauce with sprinkled beads in its entirety without chewing. The dose of a single capsule should not be divided. The contents of the entire capsule should be taken, and patients should not take anything less than one capsule per day.

## 2.4 Dosage Reduction and Discontinuation

If paradoxical aggravation of symptoms or other adverse reactions occur, reduce the dosage, or if necessary, discontinue dexamethylphenidate hydrochloride extended-release. If improvement is not observed after appropriate dosage adjustment over a one-month period, the drug should be discontinued.

## 3 DOSAGE FORMS AND STRENGTHS

5 mg, extended-release capsule, light blue opaque body and light blue opaque capsule, imprinted with black ink "par" on capsule and 048 on body.

10 mg, extended-release capsule, beige opaque body and beige opaque capsule, imprinted with black ink "par" on capsule and 049 on body.

15 mg, extended-release capsule, spring green opaque body and spring green opaque capsule, imprinted with black ink “par” on capsule and 090 on body.

20 mg, extended-release capsule, white opaque body and white opaque capsule, imprinted with black ink “par” on capsule and 248 on body.

25 mg, extended-release capsule, white opaque body and yellow transparent capsule, imprinted with black ink “par” on capsule and 333 on body.

30 mg, extended-release capsule, white opaque body and yellow transparent capsule, imprinted with black ink “par” on capsule and 539 on body.

35 mg, extended-release capsule, white opaque body and yellow transparent capsule, imprinted with black ink “par” on capsule and 339 on body.

40 mg, extended-release capsule, white opaque body and yellow transparent capsule, imprinted with black ink “par” on capsule and 546 on body.

#### **4 CONTRAINDICATIONS**

- Hypersensitivity to methylphenidate or other components of dexamethylphenidate hydrochloride extended-release. Hypersensitivity reactions, such as angioedema and anaphylactic reactions have been reported in patients treated with methylphenidate [see *Adverse Reactions (6.1)*].
- Concomitant treatment with monoamine oxidase inhibitors (MAOIs) or within 14 days following discontinuation of treatment with an MAOI, because of the risk of hypertensive crises [see *Drug Interactions (7.1)*].

#### **5 WARNINGS AND PRECAUTIONS**

##### **5.1 Abuse, Misuse, and Addiction**

Dexamethylphenidate hydrochloride extended-release has a high potential for abuse and misuse. The use of dexamethylphenidate hydrochloride extended-release exposes individuals to the risks of abuse and misuse, which can lead to the development of a substance use disorder, including addiction. Dexamethylphenidate hydrochloride extended-release can be diverted for non-medical use into illicit channels or distribution [see *Drug Abuse and Dependence (9.2)*]. Misuse and abuse of CNS stimulants, including dexamethylphenidate hydrochloride extended-release, can result in overdose and death [see *Overdosage (10)*], and this risk is increased with higher doses or unapproved methods of administration, such as snorting or injection.

Before prescribing dexamethylphenidate hydrochloride extended-release, assess each patient’s risk for abuse, misuse, and addiction. Educate patients and their families about these risks and proper disposal of any unused drug. Advise patients to store dexamethylphenidate hydrochloride extended-release in a safe place, preferably locked, and instruct patients to not give dexamethylphenidate hydrochloride extended-release to anyone else. Throughout dexamethylphenidate hydrochloride extended-release treatment, reassess each patient’s risk of abuse, misuse, and addiction and frequently monitor for signs and symptoms of abuse, misuse, and addiction.

##### **5.2 Risks to Patients With Serious Cardiac Disease**

Sudden death has been reported in patients with structural cardiac abnormalities or other serious cardiac disease who were treated with CNS stimulants at the recommended ADHD dosage.

Avoid dexamethylphenidate hydrochloride extended-release use in patients with known structural cardiac abnormalities, cardiomyopathy, serious cardiac arrhythmia, coronary artery disease, or other serious cardiac disease.

### **5.3 Increased Blood Pressure and Heart Rate**

CNS stimulants cause an increase in blood pressure (mean increase approximately 2 to 4 mmHg) and heart rate (mean increase approximately 3 to 6 beats per minute). Some patients may have larger increases.

Monitor all dexamethylphenidate hydrochloride extended-release-treated patients for hypertension and tachycardia.

### **5.4 Psychiatric Adverse Reactions**

#### Exacerbation of Pre-existing Psychosis

CNS stimulants may exacerbate symptoms of behavior disturbance and thought disorder in patients with a pre-existing psychotic disorder.

#### Induction of a Manic Episode in Patients with Bipolar Disorder

CNS stimulants may induce a manic or mixed mood episode in patients. Prior to initiating dexamethylphenidate hydrochloride extended-release treatment, screen patients for risk factors for developing manic episode (e.g., comorbid or history of depressive symptoms or a family history of suicide, bipolar disorder, or depression).

#### New Psychotic or Manic Symptoms

CNS stimulants, at the recommended dosage, may cause psychotic or manic symptoms (e.g., hallucinations, delusional thinking, or mania) in patients without a prior history of psychotic illness or mania. In a pooled analysis of multiple short-term, placebo-controlled studies of CNS stimulants, psychotic or manic symptoms occurred in approximately 0.1% of CNS stimulant-treated patients, compared to 0% of placebo-treated patients. If such symptoms occur, consider discontinuing dexamethylphenidate hydrochloride extended-release.

### **5.5 Priapism**

Prolonged and painful erections, sometimes requiring surgical intervention, have been reported with methylphenidate use in both adult and pediatric male patients. Although priapism was not reported with methylphenidate initiation, it developed after some time on methylphenidate, often subsequent to an increase in dosage. Priapism also occurred during methylphenidate withdrawal (drug holidays or during discontinuation).

Dexamethylphenidate hydrochloride extended-release-treated patients who develop abnormally sustained or frequent and painful erections should seek immediate medical attention.

### **5.6 Peripheral Vasculopathy, Including Raynaud's Phenomenon**

CNS stimulants, including dexamethylphenidate hydrochloride extended-release, used to treat ADHD are associated with peripheral vasculopathy, including Raynaud's phenomenon. Signs and symptoms are usually intermittent and mild; however, sequelae have included digital ulceration and/or soft tissue breakdown. Effects of peripheral vasculopathy, including Raynaud's phenomenon, were observed in post-marketing reports at and at the therapeutic dosage of CNS stimulants in all age groups throughout the course of treatment. Signs and symptoms generally improved after dosage reduction or discontinuation of the CNS stimulant.

Careful observation for digital changes is necessary during dexamethylphenidate hydrochloride extended-release treatment. Further clinical evaluation (e.g., rheumatology referral) may be appropriate for dexamethylphenidate hydrochloride extended-release-treated patients who develop signs or symptoms of peripheral vasculopathy.

### **5.7 Long-Term Suppression of Growth in Pediatric Patients**

CNS stimulants have been associated with weight loss and slowing of growth rate in pediatric patients.

In a 7-week, double-blind, placebo-controlled study of dexamethylphenidate hydrochloride extended-release, the mean weight gain was greater for pediatric patients (ages 6 to 17 years) receiving placebo (+0.4 kg) than for patients receiving dexamethylphenidate hydrochloride extended-release (-0.5 kg).

Careful follow-up of weight and height in pediatric patients ages 7 to 10 years who were randomized to either methylphenidate or non-medication treatment groups over 14 months, as well as in naturalistic subgroups of newly methylphenidate-treated and non-medication treated patients over 36 months (to the ages of 10 to 13 years), suggests that pediatric patients who received methylphenidate for 7 days per week throughout the year had a temporary slowing in growth rate (on average, a total of about 2 cm less growth in height and 2.7 kg less growth in weight over 3 years), without evidence of growth rebound during this development period.

Closely monitor growth (weight and height) in dexamethylphenidate hydrochloride extended-release-treated pediatric patients. Pediatric patients who are not growing or gaining height or weight as expected may need to have their treatment interrupted.

### **5.8 Acute Angle Closure Glaucoma**

There have been reports of angle closure glaucoma associated with methylphenidate treatment.

Although the mechanism is not clear, dexamethylphenidate hydrochloride extended-release-treated patients considered at risk for acute angle closure glaucoma (e.g., patients with significant hyperopia) should be evaluated by an ophthalmologist.

### **5.9 Increased Intraocular Pressure and Glaucoma**

There have been reports of an elevation of intraocular pressure (IOP) associated with methylphenidate treatment [see *Adverse Reactions (6.2)*].

Prescribe dexamethylphenidate hydrochloride extended-release to patients with open-angle glaucoma or abnormally increased IOP only if the benefit of treatment is considered to outweigh the risk. Closely monitor dexamethylphenidate hydrochloride extended-release-treated patients with a history of abnormally increased IOP or open angle glaucoma.

### **5.10 Motor and Verbal Tics, and Worsening of Tourette's Syndrome**

CNS stimulants, including methylphenidate, have been associated with the onset or exacerbation of motor and verbal tics. Worsening of Tourette's syndrome has also been reported [see *Adverse Reactions (6.2)*].

Before initiating dexamethylphenidate hydrochloride extended-release, assess the family history and clinically evaluate patients for tics or Tourette's syndrome. Regularly monitor dexamethylphenidate hydrochloride extended-release-treated patients for the emergence or worsening of tics or Tourette's syndrome, and discontinue treatment if clinically appropriate.

## **6 ADVERSE REACTIONS**

The following are discussed in more detail in other sections of the labeling:

- Abuse, Misuse, and Addiction [see *Boxed Warning, Warnings and Precautions (5.1), Drug Abuse and Dependence (9.2, 9.3)*]
- Known hypersensitivity to methylphenidate or other ingredients of dexamethylphenidate hydrochloride extended-release [see *Contraindications (4)*]
- Hypertensive Crisis with Concomitant Use of Monoamine Oxidase Inhibitors [see

*Contraindications (4), Drug Interactions (7.1)]*

- Risks to Patients with Serious Cardiac Disease [see Warnings and Precautions (5.2)]
- Increased Blood Pressure and Heart Rate [see Warnings and Precautions (5.3)]
- Psychiatric Adverse Reactions [see Warnings and Precautions (5.4)]
- Priapism [see Warnings and Precautions (5.5)]
- Peripheral Vasculopathy, Including Raynaud's Phenomenon [see Warnings and Precautions (5.6)]
- Long-Term Suppression of Growth in Pediatric Patients [see Warnings and Precautions (5.7)]
- Acute Angle Closure Glaucoma [see Warnings and Precautions (5.8)]
- Increased Intraocular Pressure and Glaucoma [see Warnings and Precautions (5.9)]
- Motor and Verbal Tics, and Worsening of Tourette's Syndrome [see Warnings and Precautions (5.10)]

## 6.1 Clinical Trials Experience

Because clinical trials are conducted under widely varying conditions, adverse reaction rates observed in the clinical trials of a drug cannot be directly compared to rates in the clinical trials of another drug and may not reflect the rates observed in clinical practice.

### Adverse Reactions in Studies with Dexmethylphenidate Hydrochloride Extended-Release in Pediatric Patients with ADHD

The safety data in this section is based on data from a 7-week controlled clinical study of dexmethylphenidate hydrochloride extended-release in 100 (103 randomized) pediatric patients with ADHD ages 6 to 17 years (ages 6 to 12, n = 86; ages 13 to 17, n = 17).

This study was a randomized, double-blind, placebo-controlled, parallel-group study to evaluate the time of onset, duration of efficacy, tolerability, safety of dexmethylphenidate hydrochloride extended-release 5 mg to 30 mg/day who met The Diagnostic and Statistical Manual of Mental Disorders, Fourth Edition (DSM-IV) criteria for ADHD [see *Clinical Studies (14.1)*].

*Most Common Adverse Reactions* (incidence of greater than or equal to 5% and at least twice placebo): dyspepsia, decreased appetite, headache, and anxiety.

*Adverse Reactions Leading to Discontinuation*: 50 of 684 (7.3%) pediatric patients treated with dexmethylphenidate immediate-release tablets experienced an adverse reaction that resulted in discontinuation. The most common reasons for discontinuation were twitching (described as motor or vocal tics), anorexia, insomnia, and tachycardia (approximately 1% each).

**Table 1** enumerates adverse reactions for the placebo-controlled, parallel-group study in children and adolescents with ADHD at flexible dexmethylphenidate hydrochloride extended-release doses of 5 to 30 mg/day. The table includes only those events that occurred in 5% or more of patients treated with dexmethylphenidate hydrochloride extended-release and for which the incidence in patients treated with dexmethylphenidate hydrochloride extended-release was at least twice the incidence in placebo-treated patients.

### **Table 1: Common Adverse Reactions in Pediatric Patients (6 to 17 years of age) with ADHD**

<b>System Organ Class Adverse Reaction</b>	<b>Dexmethylphenidate Hydrochloride Extended-Release N=53</b>	<b>Placebo N=47</b>
<b>Gastrointestinal Disorders</b>	38%	19%
Dyspepsia	8%	4%



<b>Metabolism and Nutrition Disorders</b>	34%	11%
Decreased Appetite	30%	9%
<b>Nervous System Disorders</b>	30%	13%
Headache	25%	11%
<b>Psychiatric Disorders</b>	26%	15%
Anxiety	6%	0%

Abbreviation: ADHD, attention deficit hyperactivity disorder.

**Table 2** below enumerates the incidence of dose-related adverse reactions that occurred during a fixed-dose, double-blind, placebo-controlled trial in pediatric patients with ADHD taking dexamethylphenidate hydrochloride extended-release up to 30 mg daily versus placebo. The table includes only those reactions that occurred in patients treated with dexamethylphenidate hydrochloride extended-release for which the incidence was at least 5% and greater than the incidence among placebo-treated patients.

**Table 2: Dose-Related Adverse Reactions in Pediatric Patients (6 to 17 years of age) with ADHD**

<b>System Organ Class Adverse Reaction</b>	<b>Dexamethylphenidate Hydrochloride Extended-Release 10 mg/day N = 64</b>	<b>Dexamethylphenidate Hydrochloride Extended-Release 20 mg/day N = 60</b>	<b>Dexamethylphenidate Hydrochloride Extended-Release 30 mg/day N = 58</b>	<b>Placebo N = 63</b>
<b>Gastrointestinal Disorders</b>	22%	23%	29%	24%
Vomiting	2%	8%	9%	0%
<b>Metabolism and Nutritional Disorders</b>	16%	17%	22%	5%
Anorexia	5%	5%	7%	0%
<b>Psychiatric Disorders</b>	19%	20%	38%	8%
Insomnia	5%	8%	17%	3%
Depression	0%	0%	3%	0%
Mood Swings	0%	0%	3%	2%
<b>Other Adverse Reactions</b>				
Irritability	0%	2%	5%	0%
Nasal Congestion	0%	0%	5%	0%
Pruritus	0%	0%	3%	0%

Abbreviation: ADHD, attention deficit hyperactivity disorder.

Adverse Reactions in Studies with Dexamethylphenidate Hydrochloride Extended-Release in Adult Patients with ADHD

The safety data in this section is based on data from a 5-week controlled clinical study of dexamethylphenidate hydrochloride extended-release in 218 adult patients (221 randomized) with ADHD ages 18 to 60 years. In this study, 101 adult patients were treated for at least 6 months.

This study was a randomized, double-blind, placebo-controlled, parallel-group study to evaluate the efficacy, safety, and tolerability of dexamethylphenidate hydrochloride extended-release 20 mg, 30 mg, or 40 mg daily who met DSM-IV criteria for ADHD [see *Clinical Studies (14.2)*].

*Most Common Adverse Reactions* (incidence of greater than or equal to 5% and at least twice placebo): dry mouth, dyspepsia, headache, anxiety, and pharyngolaryngeal pain.

*Adverse Reactions Leading to Discontinuation:* During the double-blind phase of the study, 10.7% of the dexamethylphenidate hydrochloride extended-release-treated patients and 7.5% of the placebo-treated patients discontinued due to adverse reactions. Three patients (1.8%) in the dexamethylphenidate hydrochloride extended-release discontinued due to insomnia and jittery respectively; and two patients (1.2%) in the dexamethylphenidate hydrochloride extended-release discontinued due to anorexia and anxiety, respectively.

**Table 3** enumerates adverse reactions for the placebo-controlled, parallel-group study in adults with ADHD at fixed dexamethylphenidate hydrochloride extended-release doses of 20, 30, or 40 mg/day. The table includes only those events that occurred in 5% or more of patients in a dexamethylphenidate hydrochloride extended-release dose group and for which the incidences in patients treated with dexamethylphenidate hydrochloride extended-release appeared to increase with dose.

**Table 3: Dose-Related Adverse Reactions in Adult Patients (18 to 60 years of age) with ADHD**

<b>System Organ Class Adverse Reaction</b>	<b>Dexamethylphenidate Hydrochloride Extended-Release 20 mg N = 57</b>	<b>Dexamethylphenidate Hydrochloride Extended-Release 30 mg N = 54</b>	<b>Dexamethylphenidate Hydrochloride Extended-Release 40 mg N = 54</b>	<b>Placebo N = 53</b>
<b>Gastrointestinal Disorders</b>	28%	32%	44%	19%
Dry Mouth	7%	20%	20%	4%
Dyspepsia	5%	9%	9%	2%
<b>Nervous System Disorders</b>	37%	39%	50%	28%
Headache	26%	30%	39%	19%
<b>Psychiatric Disorders</b>	40%	43%	46%	30%
Anxiety	5%	11%	11%	2%
<b>Respiratory, Thoracic, and Mediastinal Disorders</b>	16%	9%	15%	8%
Pharyngolaryngeal Pain	4%	4%	7%	2%

Two other adverse reactions occurring in clinical trials with dexamethylphenidate hydrochloride extended-release at a frequency greater than placebo, but which were not dose related were: feeling jittery (12% and 2%, respectively) and dizziness (6% and 2%, respectively).

**Table 4** summarizes changes in vital signs and weight that were recorded in the adult study (N=218) of dexamethylphenidate hydrochloride extended-release in the treatment of ADHD.

**Table 4: Changes (Mean ± SD) in Vital Signs and Weight by Randomized Dose During Double-Blind Treatment-Adults**

	<b>Dexamethylphenidate</b>	<b>Dexamethylphenidate</b>	<b>Dexamethylphenidate</b>
--	----------------------------	----------------------------	----------------------------

	<b>Hydrochloride ER 20 mg (N=57)</b>	<b>Hydrochloride ER 30 mg (N=54)</b>	<b>Hydrochloride ER 40 mg (N=54)</b>	<b>Placebo (N=53)</b>
<b>Pulse (bpm)</b>	3.1 ± 11.1	4.3 ± 11.7	6.0 ± 10.1	-1.4 ± 9.3
<b>Diastolic BP (mmHg)</b>	-0.2 ± 8.2	1.2 ± 8.9	2.1 ± 8.0	0.3 ± 7.8
<b>Weight (kg)</b>	-1.4 ± 2.0	-1.2 ± 1.9	-1.7 ± 2.3	-0.1 ± 3.9

## 6.2 Postmarketing Experience

The following additional adverse reactions have been identified during postapproval use of dexamethylphenidate. Because these reactions are reported voluntarily from a population of uncertain size, it is not always possible to reliably estimate their frequency or establish a causal relationship to drug exposure.

*Musculoskeletal:* rhabdomyolysis

*Immune System Disorders:* hypersensitivity reactions, including angioedema and anaphylaxis

### Adverse Reactions Reported with All Ritalin and Dexamethylphenidate Hydrochloride Extended-Release Formulations

The following adverse reactions associated with the use of all Ritalin and dexamethylphenidate hydrochloride extended-release formulations were identified in clinical trials, spontaneous reports, and literature. Because these reactions were reported voluntarily from a population of uncertain size, it is not always possible to estimate their frequency reliably or to establish a causal relationship to drug exposure.

*Infections and Infestations:* nasopharyngitis

*Blood and the Lymphatic System Disorders:* leukopenia, thrombocytopenia, anemia

*Immune System Disorders:* hypersensitivity reactions, including angioedema and anaphylaxis

*Metabolism and Nutrition Disorders:* decreased appetite, reduced weight gain, and suppression of growth during prolonged use in pediatric patients

*Psychiatric Disorders:* insomnia, anxiety, restlessness, agitation, psychosis (sometimes with visual and tactile hallucinations), depressed mood, depression

*Nervous System Disorders:* headache, dizziness, tremor, dyskinesia, including choreoathetoid movements, drowsiness, convulsions, cerebrovascular disorders (including vasculitis, cerebral hemorrhages and cerebrovascular accidents), serotonin syndrome in combination with serotonergic drugs

*Eye Disorders:* blurred vision, difficulties in visual accommodation

*Cardiac Disorders:* tachycardia, palpitations, increased blood pressure, arrhythmias, angina pectoris

*Respiratory, Thoracic, and Mediastinal Disorders:* cough

*Gastrointestinal Disorders:* dry mouth, nausea, vomiting, abdominal pain, dyspepsia

*Hepatobiliary Disorders:* abnormal liver function, ranging from transaminase elevation to severe hepatic injury

*Skin and Subcutaneous Tissue Disorders:* hyperhidrosis, pruritus, urticaria, exfoliative dermatitis, scalp hair loss, erythema multiforme rash, thrombocytopenic purpura

*Musculoskeletal and Connective Tissue Disorders:* arthralgia, muscle cramps, rhabdomyolysis, trismus

*Investigations:* weight loss (adult ADHD patients)

*Vascular Disorders:* peripheral coldness, Raynaud's phenomenon

#### Additional Adverse Reactions Reported with Other Methylphenidate Products

The list below shows adverse reactions not listed with Ritalin and Dexmethylphenidate Hydrochloride Extended-Release formulations that have been reported with other methylphenidate products based on clinical trials data and post-marketing spontaneous reports.

*Blood and Lymphatic Disorders:* pancytopenia

*Immune System Disorders:* hypersensitivity reactions, such as auricular swelling, bullous conditions, eruptions, exanthemas

*Psychiatric Disorders:* affect lability, mania, disorientation, libido changes

*Nervous System Disorders:* migraine, motor and verbal tics

*Eye Disorders:* diplopia, increased intraocular pressure, mydriasis

*Cardiac Disorders:* sudden cardiac death, myocardial infarction, bradycardia, extrasystole, supraventricular tachycardia, ventricular extrasystole

*Respiratory, Thoracic, and Mediastinal Disorders:* pharyngolaryngeal pain, dyspnea

*Gastrointestinal Disorders:* diarrhea, constipation

*Skin and Subcutaneous Tissue Disorders:* angioneurotic edema, erythema, fixed drug eruption

*Musculoskeletal, Connective Tissue, and Bone Disorders:* myalgia, muscle twitching

*Renal and Urinary Disorders:* hematuria

*Reproductive System and Breast Disorders:* gynecomastia

*General Disorders:* fatigue, hyperpyrexia

*Urogenital Disorders:* priapism

## **7 DRUG INTERACTIONS**

### **7.1 Clinically Important Drug Interactions with Dexmethylphenidate Hydrochloride Extended-Release**

**Table 5** presents clinically important drug interactions with dexmethylphenidate hydrochloride extended-release.

#### **Table 5: Clinically Important Drug Interactions with Dexmethylphenidate Hydrochloride Extended-Release**

<b>Monoamine Oxidase Inhibitors (MAOIs)</b>	
<i>Clinical Impact</i>	Concomitant use of MAOIs and CNS stimulants, including dexmethylphenidate hydrochloride extended-release, can cause hypertensive crisis. Potential outcomes include death, stroke, myocardial infarction, aortic dissection, ophthalmological

	complications, eclampsia, pulmonary edema, and renal failure [see <i>Contraindications (4)</i> ].
<i>Intervention</i>	Concomitant use of dexamethylphenidate hydrochloride extended-release with MAOIs or within 14 days after discontinuing MAOI treatment is contraindicated.
<b>Antihypertensive Drugs</b>	
<i>Clinical Impact</i>	Dexamethylphenidate hydrochloride extended-release may decrease the effectiveness of drugs used to treat hypertension [see <i>Warnings and Precautions (5.3)</i> ].
<i>Intervention</i>	Monitor blood pressure and adjust the dosage of the antihypertensive drug as needed.
<b>Halogenated Anesthetics</b>	
<i>Clinical Impact</i>	Concomitant use of halogenated anesthetics and dexamethylphenidate hydrochloride extended-release may increase the risk of sudden blood pressure and heart rate increase during surgery.
<i>Intervention</i>	Avoid use of dexamethylphenidate hydrochloride extended-release in patients being treated with anesthetics on the day of surgery.
<b>Risperidone</b>	
<i>Clinical Impact</i>	Combined use of methylphenidate with risperidone when there is a change, whether an increase or decrease, in dosage of either or both medications, may increase the risk of extrapyramidal symptoms (EPS)
<i>Intervention</i>	Monitor for signs of EPS

## 8 USE IN SPECIFIC POPULATIONS

### 8.1 Pregnancy

#### Pregnancy Exposure Registry

There is a pregnancy exposure registry that monitors pregnancy outcomes in women exposed to ADHD medications, including dexamethylphenidate hydrochloride extended-release, during pregnancy. Healthcare providers are encouraged to register patients by calling the National Pregnancy Registry for ADHD medications at 1-866-961-2388 or visiting <https://womensmentalhealth.org/adhd-medications/>.

#### Risk Summary

Dexamethylphenidate is the *d-threo* enantiomer of racemic methylphenidate. Published studies and postmarketing reports on methylphenidate use during pregnancy have not identified a drug-associated risk of major birth defects, miscarriage or adverse maternal or fetal outcomes. There may be risks to the fetus associated with the use of CNS stimulants during pregnancy (see *Clinical Considerations*). Embryo-fetal development studies in rats showed delayed fetal skeletal ossification at doses up to 5 times the maximum recommended human dose (MRHD) of 20 mg/day given to adults based on

plasma levels. A decrease in pup weight in males was observed in a pre- and post-natal development study with oral administration of methylphenidate to rats throughout pregnancy and lactation at doses 5 times the MRHD of 20 mg/day given to adults based on plasma levels (see *Data*).

The estimated background risk of major birth defects and miscarriage for the indicated population is unknown. All pregnancies have a background risk of birth defect, loss, or other adverse outcomes. In the U.S. general population, the estimated background risk of major birth defects and miscarriage in clinically recognized pregnancies is 2% to 4% and 15% to 20%, respectively.

### Clinical Considerations

#### *Fetal/Neonatal Adverse Reactions*

CNS stimulants such as dexamethylphenidate hydrochloride extended-release, can cause vasoconstriction and thereby decrease placental perfusion. No fetal and/or neonatal adverse reactions have been reported with the use of therapeutic doses of methylphenidate during pregnancy; however, premature delivery and low birth weight infants have been reported in amphetamine-dependent mothers.

### Data

#### *Animal Data*

In embryo-fetal development studies conducted in rats and rabbits, dexamethylphenidate was administered orally at doses of up to 20 and 100 mg/kg/day, respectively, during the period of organogenesis. No evidence of malformations was found in either the rat or rabbit study; however, delayed fetal skeletal ossification was observed at the highest dose level in rats. When dexamethylphenidate was administered to rats throughout pregnancy and lactation at doses of up to 20 mg/kg/day, post-weaning body weight gain was decreased in male offspring at the highest dose, but no other effects on postnatal development were observed. At the highest doses tested, plasma levels [area under the curves (AUCs)] of dexamethylphenidate in pregnant rats and rabbits were approximately 5 and 1 times, respectively, those in adults dosed with 20 mg/day. Plasma levels in adults were comparatively similar to plasma levels in adolescents.

Racemic methylphenidate has been shown to cause malformations (increased incidence of fetal spina bifida) in rabbits when given in doses of 200 mg/kg/day throughout organogenesis.

## **8.2 Lactation**

### Risk Summary

Dexamethylphenidate is the *d-threo* enantiomer of racemic methylphenidate. Limited published literature, based on milk sampling from seven mothers' reports that methylphenidate is present in human milk, which resulted in infant doses of 0.16% to 0.7% of the maternal weight-adjusted dosage and a milk/plasma ratio ranging between 1.1 and 2.7. There are no reports of adverse effects on the breastfed infant and no effects on milk production. Long-term neurodevelopmental effects on infants from stimulant exposure are unknown. The developmental and health benefits of breastfeeding should be considered along with the mother's clinical need for dexamethylphenidate hydrochloride extended-release and any potential adverse effects on the breastfed infant from dexamethylphenidate hydrochloride extended-release or from the underlying maternal condition.

### Clinical Considerations

Monitor breastfeeding infants for adverse reactions, such as agitation, insomnia, anorexia, and reduced weight gain.

## **8.4 Pediatric Use**

The safety and effectiveness of dexamethylphenidate hydrochloride extended-release for the treatment of ADHD have been established in pediatric patients aged 6 to 17 years in two adequate and well-controlled clinical trials [see *Clinical Studies (14.2)*].

The safety and effectiveness of dexamethylphenidate hydrochloride extended-release in pediatric patients aged less than 6 years have not been established.

The long-term efficacy of dexamethylphenidate hydrochloride extended-release in pediatric patients has not been established.

#### Long Term Suppression of Growth

Growth should be monitored during treatment with stimulants, including dexamethylphenidate hydrochloride extended-release. Pediatric patients who are not growing or gaining weight as expected may need to have their treatment interrupted [see *Warnings and Precautions (5.7)*].

#### Juvenile Animal Toxicity Data

Rats treated with racemic methylphenidate early in the postnatal period through sexual maturation demonstrated a decrease in spontaneous locomotor activity in adulthood. A deficit in acquisition of a specific learning task was observed in females only. The doses at which these findings were observed are at least 6 times the MRHD of 60 mg/day given to children on a mg/m<sup>2</sup> basis.

In a study conducted in young rats, racemic methylphenidate was administered orally at doses of up to 100 mg/kg/day for 9 weeks, starting early in the postnatal period (postnatal Day 7) and continuing through sexual maturity (postnatal Week 10). When these animals were tested as adults (postnatal Weeks 13 to 14), decreased spontaneous locomotor activity was observed in males and females previously treated with 50 mg/kg/day (approximately 4 times the MRHD of 60 mg/day of racemic methylphenidate given to children on a mg/m<sup>2</sup> basis) or greater, and a deficit in the acquisition of a specific learning task was seen in females exposed to the highest dose (8 times the MRHD given to children on a mg/m<sup>2</sup> basis). The no effect level for juvenile neurobehavioral development in rats was 5 mg/kg/day (approximately 0.5 times the MRHD given to children on a mg/m<sup>2</sup> basis). The clinical significance of the long-term behavioral effects observed in rats is unknown.

### **8.5 Geriatric Use**

Dexamethylphenidate hydrochloride extended-release has not been studied in the geriatric population.

## **9 DRUG ABUSE AND DEPENDENCE**

### **9.1 Controlled Substance**

Dexamethylphenidate hydrochloride extended-release contains dexamethylphenidate hydrochloride, a Schedule II controlled substance.

### **9.2 Abuse**

Dexamethylphenidate hydrochloride extended-release has a high potential for abuse and misuse which can lead to the development of a substance use disorder, including addiction [see *Warnings and Precautions (5.1)*]. Dexamethylphenidate hydrochloride extended-release can be diverted for non-medical use into illicit channels or distribution.

Abuse is the intentional non-therapeutic use of a drug, even once, to achieve a desired psychological or physiological effect. Misuse is the intentional use, for therapeutic purposes, of a drug by an individual in a way other than prescribed by a health care provider or for whom it was not prescribed. Drug addiction is a cluster of behavioral,

cognitive, and physiological phenomena that may include a strong desire to take the drug, difficulties in controlling drug use (e.g., continuing drug use despite harmful consequences, giving a higher priority to drug use than other activities and obligations), and possible tolerance or physical dependence.

Misuse and abuse of methylphenidate may cause increased heart rate, respiratory rate, or blood pressure; sweating; dilated pupils; hyperactivity; restlessness; insomnia; decreased appetite; loss of coordination; tremors; flushed skin; vomiting; and/or abdominal pain. Anxiety, psychosis, hostility, aggression, and suicidal or homicidal ideation have also been observed with CNS stimulants abuse and/or misuse. Misuse and abuse of CNS stimulants, including dextmethylphenidate hydrochloride extended-release, can result in overdose and death [see *Overdosage (10)*], and this risk is increased with higher doses or unapproved methods of administration, such as snorting or injection.

### **9.3 Dependence**

#### Physical Dependence

Dextmethylphenidate hydrochloride extended-release may produce physical dependence. Physical dependence is a state that develops as a result of physiological adaptation in response to repeated drug use, manifested by withdrawal signs and symptoms after abrupt discontinuation or a significant dose reduction of a drug.

Withdrawal signs and symptoms after abrupt discontinuation or dose reduction following prolonged use of CNS stimulants including dextmethylphenidate hydrochloride extended-release include dysphoric mood; depression; fatigue; vivid, unpleasant dreams; insomnia or hypersomnia; increased appetite; and psychomotor retardation or agitation.

#### Tolerance

Dextmethylphenidate hydrochloride extended-release may produce tolerance. Tolerance is a physiological state characterized by a reduced response to a drug after repeated administration (i.e., a higher dose of a drug is required to produce the same effect that was once obtained at a lower dose).

## **10 OVERDOSAGE**

### Clinical Effects of Overdose

Overdose of CNS stimulants is characterized by the following sympathomimetic effects:

- Cardiovascular effects including tachyarrhythmias, and hypertension or hypotension. Vasospasm, myocardial infarction, or aortic dissection may precipitate sudden cardiac death. Takotsubo cardiomyopathy may develop.
- CNS effects including psychomotor agitation, confusion, and hallucinations. Serotonin syndrome, seizures, cerebral vascular accidents, and coma may occur.
- Life-threatening hyperthermia (temperatures greater than 104°F) and rhabdomyolysis may develop.

### Overdose Management

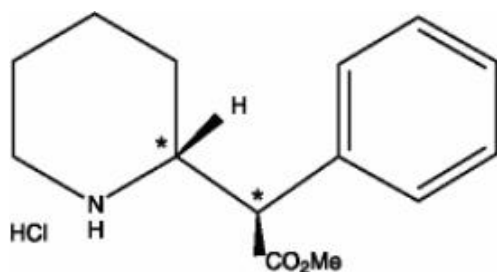
Consider the possibility of multiple drug ingestion. The pharmacokinetic profile of dextmethylphenidate hydrochloride extended-release should be considered when treating patients with overdose. Because methylphenidate has a large volume of distribution and is rapidly metabolized, dialysis is not useful. Consider contacting the Poison Help line (1-800-222-1222) or a medical toxicologist for additional overdose management recommendations.

## **11 DESCRIPTION**



Dexmethylphenidate hydrochloride extended-release contains dexmethylphenidate hydrochloride, a CNS stimulant. Dexmethylphenidate hydrochloride is the *d-threo* enantiomer of racemic methylphenidate hydrochloride. Dexmethylphenidate hydrochloride extended-release is an extended-release formulation of dexmethylphenidate with a bi-modal release profile. Each bead-filled dexmethylphenidate hydrochloride extended-release capsule contains half the dose as immediate-release beads and half as enteric-coated, delayed-release beads, thus providing an immediate release of dexmethylphenidate and a delayed release of dexmethylphenidate. Dexmethylphenidate hydrochloride extended-release is intended for oral administration and is available as 5 mg, 10 mg, 15 mg, 20 mg, 25 mg, 30 mg, 35 mg, and 40 mg extended-release capsules.

Chemically, dexmethylphenidate hydrochloride is methyl  $\alpha$ -phenyl-2-piperidineacetate hydrochloride, (R,R')-(+)-. Its molecular formula is  $C_{14}H_{19}NO_2 \cdot HCl$ . Its structural formula is:



Note\* = asymmetric carbon center

Dexmethylphenidate hydrochloride is a white to off-white powder. Its solutions are acid to litmus. It is freely soluble in water and in methanol, soluble in alcohol, and slightly soluble in chloroform and in acetone. Its molecular weight is 269.77 g/mol.

**Inactive ingredients:** methacrylic acid copolymer, amino methacrylate copolymer, triethyl citrate, talc, sugar spheres, polyethylene glycol, gelatin, titanium dioxide and black ink. The black ink contains shellac glaze, iron oxide black, n-butyl alcohol, propylene glycol, FD&C Blue #1, FD&C Blue #2, FD&C Red #40 and D&C Yellow #10. The 5 mg also contains FD&C Blue #1 and FD&C Red #3. The 10 mg contains FD&C Yellow #6. The 15 mg contains FD&C Blue #1 and FD&C Yellow #6. The 25 mg, 30 mg, 35 mg and 40 mg contains yellow iron oxide.

## 12 CLINICAL PHARMACOLOGY

### 12.1 Mechanism of Action

Dexmethylphenidate hydrochloride is a CNS stimulant. The mode of therapeutic action in ADHD is not known.

### 12.2 Pharmacodynamics

Dexmethylphenidate is the more pharmacologically active *d*-enantiomer of racemic methylphenidate. Methylphenidate blocks the reuptake of norepinephrine and dopamine into the presynaptic neuron and increase the release of these monoamines into the extraneuronal space.

#### Cardiac Electrophysiology

At the recommended maximum total daily dosage of 40 mg, dexmethylphenidate hydrochloride extended-release does not prolong the QTc interval to any clinically relevant extent.

## 12.3 Pharmacokinetics

### Absorption

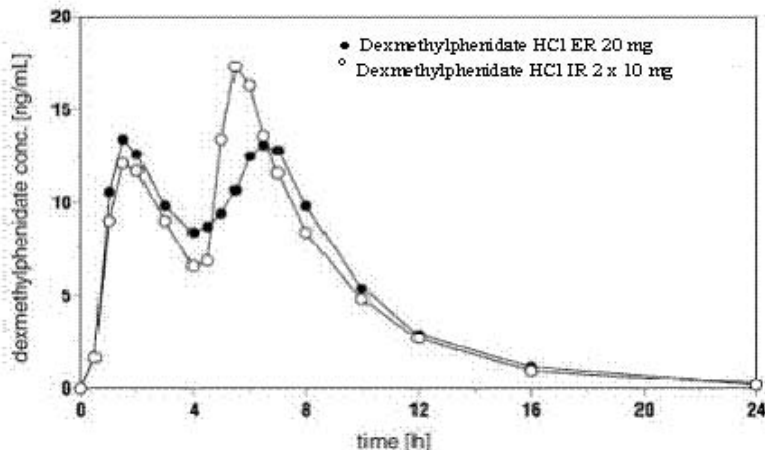
Dexmethylphenidate hydrochloride extended-release produces a bi-modal plasma concentration-time profile (i.e., 2 distinct peaks approximately 4 hours apart) when orally administered to healthy adults. The initial rate of absorption for dexmethylphenidate hydrochloride extended-release is similar to that of dexmethylphenidate tablets as shown by the similar rate parameters between the 2 formulations, i.e., first peak concentration ( $C_{max1}$ ), and time to the first peak ( $t_{max1}$ ), which is reached in 1.5 hours (typical range 1 to 4 hours). The mean time to the interpeak minimum ( $t_{minip}$ ) is slightly shorter, and time to the second peak ( $t_{max2}$ ) is slightly longer for dexmethylphenidate hydrochloride extended-release given once daily (about 6.5 hours; range, 4.5 to 7 hours) compared to dexmethylphenidate hydrochloride tablets given in 2 doses 4 hours apart (see **Figure 1**), although the ranges observed are greater for dexmethylphenidate hydrochloride extended-release.

Dexmethylphenidate hydrochloride extended-release given once daily exhibits a lower second peak concentration ( $C_{max2}$ ), higher interpeak minimum concentrations ( $C_{minip}$ ), and fewer peak and trough fluctuations than dexmethylphenidate hydrochloride tablets given in 2 doses given 4 hours apart. This is due to an earlier onset and more prolonged absorption from the delayed-release beads (see **Figure 1**).

The ratio of geometric mean of  $AUC_{(0-inf)}$  and  $C_{max}$  after administration of dexmethylphenidate hydrochloride extended-release given once daily are 1.02 and 0.86 respectively, to the same total dose of dexmethylphenidate hydrochloride tablets given in 2 doses 4 hours apart. The variability in  $C_{max}$ ,  $C_{min}$ , and  $AUC$  is similar between dexmethylphenidate hydrochloride extended-release and dexmethylphenidate immediate-release tablets with approximately a 3-fold range in each.

Approximately 90% of the dose is absorbed after oral administration of radiolabeled racemic methylphenidate. However, due to first pass metabolism the mean absolute bioavailability of dexmethylphenidate when administered in various formulations was 22% to 25%.

**Figure 1. Mean Dexmethylphenidate Plasma Concentration-Time Profiles After Administration of 1 x 20 mg Dexmethylphenidate Hydrochloride Extended-Release (n=24) Capsules and 2 x 10 mg Dexmethylphenidate Hydrochloride Immediate-Release Tablets (n=25)**



After single dose administration, dexmethylphenidate hydrochloride extended-release

demonstrated dose proportional pharmacokinetics (PK) in the range of 5 mg to 40 mg.

For patients unable to swallow the capsule, the contents may be sprinkled on applesauce and administered [see *Dosage and Administration (2)*].

### Distribution

The plasma protein binding of dexamethylphenidate is not known; racemic methylphenidate is bound to plasma proteins by 12% to 15%, independent of concentration. Dexamethylphenidate shows a volume of distribution of  $2.65 \pm 1.11$  L/kg.

### Elimination

Plasma dexamethylphenidate concentrations decline monophasically following oral administration of dexamethylphenidate hydrochloride extended-release. The mean terminal elimination half-life of dexamethylphenidate was about 3 hours in healthy adults. Pediatric patients tend to have slightly shorter half-lives with means of 2 to 3 hours. Dexamethylphenidate was eliminated with a mean clearance of  $0.40 \pm 0.12$  L/hr/kg after intravenous administration.

### *Metabolism*

In humans, dexamethylphenidate is metabolized primarily via de-esterification to *d*- $\alpha$ -phenyl-piperidine acetic acid (also known as *d*-ritalinic acid). This metabolite has little or no pharmacological activity. There is no *in vivo* interconversion to the *l*-threo-enantiomer.

### *Excretion*

After oral dosing of radiolabeled racemic methylphenidate in humans, about 90% of the radioactivity was recovered in urine. The main urinary metabolite of racemic *dl*-methylphenidate was *dl*-ritalinic acid, accountable for approximately 80% of the dose. Urinary excretion of parent compound accounted for 0.5% of an intravenous dose.

### Studies in Specific Populations

#### *Male and Female Patients*

After administration of dexamethylphenidate hydrochloride extended-release, the first peak, ( $C_{max1}$ ) was on average 45% higher in women. The interpeak minimum and the second peak also tended to be slightly higher in women although the difference was not statistically significant, and these patterns remained even after weight normalization.

#### *Racial or Ethnic Groups*

There is insufficient experience with the use of dexamethylphenidate hydrochloride extended-release to detect ethnic variations in pharmacokinetics.

#### *Pediatric Patients*

The pharmacokinetics of dexamethylphenidate after dexamethylphenidate hydrochloride extended-release administration have not been studied in pediatrics less than 18 years of age. When a similar formulation of racemic methylphenidate was examined in 15 patients between 10 and 12 years of age, and 3 patients with ADHD between 7 and 9 years of age, the time to the first peak was similar, although the time until the between peak minimum, and the time until the second peak were delayed and more variable in pediatric patients compared to adults. After administration of the same dose to pediatric patients and adults, concentrations in pediatric patients were approximately twice the concentrations observed in adults. This higher exposure is almost completely due to smaller body size as no relevant age-related differences in dexamethylphenidate pharmacokinetic parameters (i.e., clearance and volume of distribution) are observed after normalization to dose and weight.

#### *Patients with Renal Impairment*

There is no experience with the use of dexamethylphenidate hydrochloride extended-release in patients with renal impairment. Since renal clearance is not an important route of methylphenidate elimination, renal impairment is expected to have little effect on the pharmacokinetics of dexamethylphenidate hydrochloride extended-release.

#### *Patients with Hepatic Impairment*

There is no experience with the use of dexamethylphenidate hydrochloride extended-release in patients with hepatic impairment.

#### Drug Interaction Studies

Methylphenidate is not metabolized by cytochrome P450 (CYP) isoenzymes to a clinically relevant extent. Inducers or inhibitors of CYPs are not expected to have any relevant impact on methylphenidate pharmacokinetics. Conversely, the *d*- and *l*-enantiomers of methylphenidate did not relevantly inhibit CYP1A2, 2C8, 2C9, 2C19, 2D6, 2E1, or 3A. Clinically, methylphenidate coadministration did not increase plasma concentrations of the CYP2D6 substrate desipramine.

## **13 NONCLINICAL TOXICOLOGY**

### **13.1 Carcinogenesis, Mutagenesis, and Impairment of Fertility**

#### Carcinogenesis

Lifetime carcinogenicity studies have not been carried out with dexamethylphenidate. In a lifetime carcinogenicity study carried out in B6C3F1 mice, racemic methylphenidate caused an increase in hepatocellular adenomas and, in males only, an increase in hepatoblastomas was seen at a daily dose of approximately 60 mg/kg/day. This dose is approximately 2 times the MRHD of 60 mg/day of racemic methylphenidate given to children on a mg/m<sup>2</sup> basis. Hepatoblastoma is a relatively rare rodent malignant tumor type. There was no increase in total malignant hepatic tumors. The mouse strain used is sensitive to the development of hepatic tumors, and the significance of these results to humans is unknown.

Racemic methylphenidate did not cause any increase in tumors in a lifetime carcinogenicity study carried out in F344 rats; the highest dose used was approximately 45 mg/kg/day, which is approximately 4 times the MRHD (children) of 60 mg/day of racemic methylphenidate in children on a mg/m<sup>2</sup> basis.

In a 24-week carcinogenicity study with racemic methylphenidate in the transgenic mouse strain p53+/-, which is sensitive to genotoxic carcinogens, there was no evidence of carcinogenicity. Male and female mice were fed diets containing the same concentrations as in the lifetime carcinogenicity study; the high-dose group was exposed to 60 to 74 mg/kg/day of racemic methylphenidate.

#### Mutagenesis

Dexamethylphenidate was not mutagenic in the *in vitro* Ames reverse mutation assay, in the *in vitro* mouse lymphoma cell forward mutation assay, or in the *in vivo* mouse bone marrow micronucleus test. In an *in vitro* assay using cultured Chinese Hamster Ovary cells treated with racemic methylphenidate, sister chromatid exchanges and chromosome aberrations were increased, indicative of a weak clastogenic response.

#### Impairment of Fertility

No human data on the effect of methylphenidate on fertility are available.

Fertility studies have not been conducted with dexamethylphenidate. Racemic methylphenidate did not impair fertility in male or female mice that were fed diets containing the drug in an 18-week continuous breeding study. The study was conducted at doses of up to 160 mg/kg/day, approximately 10 times the MRHD of 60 mg/day of

racemic methylphenidate given to adolescents on a mg/m<sup>2</sup> basis.

## 14 CLINICAL STUDIES

### 14.1 Pediatric Patients

A randomized, double-blind, placebo-controlled, parallel-group study (Study 1) was conducted in 103 pediatric patients (ages 6 to 12, n = 86; ages 13 to 17, n = 17) who met DSM-IV criteria for ADHD inattentive, hyperactive-impulsive or combined inattentive/hyperactive-impulsive subtypes (Study 1).

Patients were randomized to receive either a flexible-dose of dexamethylphenidate hydrochloride extended-release (5 to 30 mg/day) or placebo once daily for 7 weeks. During the first 5 weeks of treatment, patients were titrated to their optimal dose and remained on this optimal dose for the last 2 weeks of the study without dose changes or interruption.

Signs and symptoms of ADHD were evaluated by comparing the mean change from baseline to endpoint for dexamethylphenidate hydrochloride extended-release and placebo-treated patients using an intent-to-treat analysis of the primary efficacy outcome measure, the DSM-IV total subscale score of the Conners ADHD/DSM-IV Scales for teachers (CADS-T). The CADS-T includes the ADHD Index (12 items) and the DSM-IV total subscale (18 items, total score range: 0 to 54); the latter is divided into inattentive (9 items) and hyperactive-impulsive (9 items) subscales. Teachers assessed behavior observed during the school day by completing the CADS-T weekly. A decrease in the CADS-T DSM-IV total subscale score from baseline indicates improvement.

The CADS-T total scores showed a statistically significant treatment effect in favor of dexamethylphenidate hydrochloride extended-release than placebo (**Table 6**). There were insufficient adolescents enrolled in this study to assess the efficacy for dexamethylphenidate hydrochloride extended-release in the adolescent population. However, pharmacokinetic considerations and evidence of effectiveness of immediate-release dexamethylphenidate hydrochloride in adolescents support the effectiveness of dexamethylphenidate hydrochloride extended-release in this population.

**Table 6: Summary of Efficacy Results from ADHD Study in Pediatric Patients (6 to 17 years) (Study 1)**

Study Number	Treatment Group	Primary Efficacy Measure: CADS-T Total Score		
		Mean Baseline Score (SD)	LS Mean Change from Baseline (SE)	Placebo-subtracted Difference <sup>a</sup> (95% CI)
Study 1	Dexamethylphenidate Hydrochloride Extended-Release 5 to 30 mg/day (n = 52)	33.3 (9.18)	16.41 (1.8)	10.64 (5.38, 15.91)
	Placebo (n = 45)	34.9 (10.03)	5.77 (1.93)	--

Abbreviations: ADHD, attention deficit hyperactivity disorder; SD, standard deviation; SE, standard error; LS Mean, least-squares mean; CI, confidence interval, not adjusted for multiple comparisons.

<sup>a</sup>Difference (drug minus placebo) in least-squares mean change from baseline.

In 2 additional cross-over studies (Studies 2 and 3) in pediatric patients ages 6 to 12 years, who received 20 mg dexamethylphenidate hydrochloride extended-release or placebo, dexamethylphenidate hydrochloride extended-release was found to have a statistically significant treatment effect versus placebo on the Swanson, Kotkin, Agler, M-Flynn & Pelham (SKAMP) rating scale total scores at all-time points after dosing in each study (0.5, 1, 3, 4, 5, 7, 9, 10, 11, and 12 hours in Study 2 and 1, 2, 4, 6, 8, 9, 10, 11, and 12 hours in the Study 3). SKAMP is a validated 13-item teacher-rated scale that assesses manifestations of ADHD in a classroom setting. A treatment effect was also observed 0.5 hours after administration of dexamethylphenidate hydrochloride extended-release 20 mg in an additional study of ADHD patients ages 6 to 12 years.

## 14.2 Adult Patients

A randomized, double-blind, placebo-controlled, parallel-group (Study 4) was conducted in 221 adult patients ages 18 to 60 years who met DSM-IV criteria for ADHD inattentive, hyperactive-impulsive or combined inattentive/hyperactive-impulsive subtypes (Study 4).

Patients were randomized to receive either a fixed dose of dexamethylphenidate hydrochloride extended-release (20, 30, or 40 mg/day) or placebo once daily for 5 weeks. Patients randomized to dexamethylphenidate hydrochloride extended-release were initiated on a 10 mg/day starting dose and titrated in increments of 10 mg/week to the randomly assigned fixed dose. Patients were maintained on their fixed dose (20, 30, or 40 mg/day) for a minimum of 2 weeks.

Signs and symptoms of ADHD were evaluated by comparing the mean change from baseline to endpoint for dexamethylphenidate hydrochloride extended-release and placebo-treated patients using an intent-to-treat analysis of the primary efficacy outcome measure, the investigator-administered DSM-IV Attention-Deficit/Hyperactivity Disorder Rating Scale (DSM-IV ADHD RS).

The DSM-IV ADHD-RS is an 18-item questionnaire with a score range of 0 to 54 points that measures the core symptoms of ADHD and includes both hyperactive/impulsive and inattentive subscales.

All 3 dexamethylphenidate hydrochloride extended-release doses (20, 30, and 40 mg/day) showed a statistically significant treatment effect compared to placebo. There was no obvious increase in effectiveness with increasing the dose.

**Table 7: Summary of Efficacy Results from ADHD Study in Adults (Study 4)**

Study Number	Treatment Group	Primary Efficacy Measure: ADHD-RS Total Score		
		Mean Baseline Score (SD)	LS Mean Change from Baseline (SE)	Placebo-subtracted Difference <sup>a</sup> (95% CI)
Study 4	Dexamethylphenidate Hydrochloride Extended-Release 20 mg/day (n = 57)	36.8 (7.2)	13.27 (1.44)	5.71 (1.64, 9.78)
	Dexamethylphenidate Hydrochloride Extended-Release 30 mg/day (n = 54)	36.9 (8.07)	12.86 (1.48)	5.31 (1.18, 9.44)

Dexmethylphenidate Hydrochloride Extended-Release 40 mg/day (n = 54)	36.9 (8.25)	16.51 (1.48)	8.96 (4.83, 13.08)
Placebo (n = 53)	37.5 (7.82)	7.55 (1.49)	--

Abbreviations: ADHD, attention deficit hyperactivity disorder; SD, standard deviation; SE, standard error; LS Mean, least-squares mean; CI, confidence interval, not adjusted for multiple comparisons.

<sup>a</sup>Difference (drug minus placebo) in least-squares mean change from baseline.

## 16 HOW SUPPLIED/STORAGE AND HANDLING

Dexmethylphenidate hydrochloride extended-release capsules are available as follows:

10 mg Extended Release Capsules (NDC 63629-2171-1) beige opaque body with a beige opaque cap printed with “par” on capsule and 049 on body in black ink supplied in bottles of 100.

Store dexmethylphenidate hydrochloride extended-release capsules at 20°C to 25°C (68°F to 77°F); excursions permitted to 15° C to 30°C (59°F to 86°F)[See USP Controlled Room Temperature.]

Dispense in tight container (USP).

### Disposal

Comply with local laws and regulations on drug disposal of CNS stimulants. Dispose of remaining, unused, or expired dexmethylphenidate hydrochloride extended-release by a medicine take-back program or by an authorized collector registered with the Drug Enforcement Administration. If no take-back program or authorized collector is available, mix dexmethylphenidate hydrochloride extended-release with an undesirable, non-toxic substance to make it less appealing to children and pets. Place the mixture in a container such as a sealed plastic bag and discard dexmethylphenidate hydrochloride extended-release in the household trash.

Repackaged/Relabeled by:  
Bryant Ranch Prepack, Inc.  
Burbank, CA 91504

## 17 PATIENT COUNSELING INFORMATION

Advise patients to read the FDA-approved patient labeling (Medication Guide).

### Abuse, Misuse, and Addiction

Educate patients and their families about the risks of abuse, misuse, and addiction of dexmethylphenidate hydrochloride extended-release, which can lead to overdose and death, and proper disposal of any unused drug [see *Warnings and Precautions (5.1)*, *Drug Abuse and Dependence (9.2)*, *Overdosage (10)*]. Advise patients to store dexmethylphenidate hydrochloride extended-release in a safe place, preferably locked, and instruct patients to not give dexmethylphenidate hydrochloride extended-release to anyone else.

### Risks to Patients with Serious Cardiac Disease

Advise patients that there are potential risks to patients with serious cardiac disease, including sudden death, with dexmethylphenidate hydrochloride extended-release use.

Instruct patients to contact a healthcare provider immediately if they develop symptoms, such as exertional chest pain, unexplained syncope, or other symptoms suggestive of cardiac disease [see *Warnings and Precautions (5.2)*].

#### Increased Blood Pressure and Heart Rate

Instruct patients that dexamethylphenidate hydrochloride extended-release can cause elevations of their blood pressure and pulse rate [see *Warnings and Precautions (5.3)*].

#### Psychiatric Adverse Reactions

Advise patients that dexamethylphenidate hydrochloride extended-release, at recommended doses, can cause psychotic or manic symptoms, even in patients without prior history of psychotic symptoms or mania [see *Warnings and Precautions (5.4)*].

#### Priapism

Advise patients of the possibility of painful or prolonged penile erections (priapism). Instruct them to seek immediate medical attention in the event of priapism [see *Warnings and Precautions (5.5)*].

#### Circulation Problems in Fingers and Toes (Peripheral Vasculopathy, Including Raynaud's Phenomenon)

Instruct patients beginning treatment with dexamethylphenidate hydrochloride extended-release about the risk of peripheral vasculopathy, including Raynaud's phenomenon, and associated signs and symptoms: fingers or toes may feel numb, cool, painful, and/or may change color from pale, to blue, to red. Instruct patients to report to their physician any new numbness, pain, skin color change, or sensitivity to temperature in fingers or toes.

Instruct patients to call their physician immediately with any signs of unexplained wounds appearing on fingers or toes while taking dexamethylphenidate hydrochloride extended-release. Further clinical evaluation (e.g., rheumatology referral) may be appropriate for certain patients [see *Warnings and Precautions (5.6)*].

#### Long-Term Suppression of Growth in Pediatric Patients

Advise patients that dexamethylphenidate hydrochloride extended-release may cause slowing of growth and weight loss [see *Warnings and Precautions (5.7)*].

#### Increased Intraocular Pressure (IOP) and Glaucoma

Advise patients that IOP and glaucoma may occur during treatment with dexamethylphenidate hydrochloride extended-release [see *Warnings and Precautions (5.9)*].

#### Motor and Verbal Tics, and Worsening of Tourette's Syndrome

Advise patients that motor and verbal tics and worsening of Tourette's Syndrome may occur during treatment with dexamethylphenidate hydrochloride extended-release. Instruct patients to notify their healthcare provider if emergence of new tics or worsening of tics or Tourette's syndrome occurs [see *Warnings and Precautions (5.10)*].

#### Pregnancy Registry

Advise patients that there is a pregnancy exposure registry that monitors pregnancy outcomes in patients exposed to ADHD medications, including dexamethylphenidate hydrochloride extended-release, during pregnancy [see *Use in Specific Populations (8.1)*].



**Capsules for Oral Use, CII  
(Dex-meth-ill-FEN-ĭ-date Hĭ-dro-KLOR-ĭd)**

**What is the most important information I should know about dexamethylphenidate hydrochloride extended-release capsules?**

**Dexamethylphenidate hydrochloride extended-release may cause serious side effects, including:**

- **Abuse, misuse, and addiction.** Dexamethylphenidate hydrochloride extended-release has a high chance for abuse and misuse and may lead to substance use problems, including addiction. Misuse and abuse of dexamethylphenidate hydrochloride extended-release, other methylphenidate containing medicines, and amphetamine containing medicines, can lead to overdose and death. The risk of overdose and death is increased with higher doses of dexamethylphenidate hydrochloride extended-release or when it is used in ways that are not approved, such as snorting or injection.
- Your healthcare provider should check you or your child's risk for abuse, misuse, and addiction before starting treatment with dexamethylphenidate hydrochloride extended-release and will monitor you or your child during treatment.
- Dexamethylphenidate hydrochloride extended-release may lead to physical dependence after prolonged use, even if taken as directed by your healthcare provider.
- Do not give dexamethylphenidate hydrochloride extended-release to anyone else. See **"What is dexamethylphenidate hydrochloride extended-release?"** for more information.
- Keep dexamethylphenidate hydrochloride extended-release in a safe place and properly dispose of any unused medicine. See **"How should I store dexamethylphenidate hydrochloride extended-release?"** for more information.
- Tell your healthcare provider if you or your child have ever abused or been dependent on alcohol, prescription medicines, or street drugs.
- **Risks for people with serious heart disease.** Sudden death has happened in people who have heart defects or other serious heart disease.

Your healthcare provider should check you or your child carefully for heart problems before starting dexamethylphenidate hydrochloride extended-release. Tell your healthcare provider if you or your child have any heart problems, heart disease, or heart defects.

**Call your healthcare provider or go to the nearest hospital emergency room right away if you or your child has any signs of heart problems, such as chest pain, shortness of breath, or fainting while taking dexamethylphenidate hydrochloride extended-release capsules.**

- **Increased blood pressure and heart rate.** Your

healthcare provider should check you or your child's blood pressure and heart rate regularly during treatment with dexamethylphenidate hydrochloride extended-release.

• **Mental (psychiatric) problems:**  
**All Patients**

- new or worse behavior and thought problems
- new or worse bipolar illness
- new psychotic symptoms (such as hearing voices, believing things that are not true, are suspicious) or new manic symptoms

Tell your healthcare provider about any mental problems you or your child have, or about a family history of suicide, bipolar illness, or depression.

**Call your healthcare provider right away if you or your child have any new or worsening mental symptoms or problems while taking dexamethylphenidate hydrochloride extended-release capsules, especially seeing or hearing things that are not real, believing things that are not real, or are suspicious.**

**What is dexamethylphenidate hydrochloride extended-release?**

- Dexamethylphenidate hydrochloride extended-release is a central nervous system stimulant (CNS) prescription medicine. **It is used for the treatment of Attention-Deficit Hyperactivity Disorder (ADHD).** Dexamethylphenidate hydrochloride extended-release may help increase attention and decrease impulsiveness and hyperactivity in patients with ADHD.
- Dexamethylphenidate hydrochloride extended-release should be used as a part of a total treatment program for ADHD that may include counseling or other therapies.

**Dexamethylphenidate hydrochloride extended-release is a federally controlled substance (CII) because it contains dexamethylphenidate that can be a target for people who abuse prescription medicines or street drugs.** Keep dexamethylphenidate hydrochloride extended-release in a safe place to protect it from theft. Never give your dexamethylphenidate hydrochloride extended-release to anyone else because it may cause death or harm them. Selling or giving away dexamethylphenidate hydrochloride extended-release may harm others and is against the law.

**Who should not take dexamethylphenidate hydrochloride extended-release capsules?**

**Dexamethylphenidate hydrochloride extended-release capsules should not be taken if you or your child:**

- are allergic to methylphenidate hydrochloride, or any of the ingredients in dexamethylphenidate hydrochloride extended-release. See the end of this Medication Guide for a complete list of ingredients in dexamethylphenidate hydrochloride extended-release.
- are taking or have taken within the past 14 days an anti-depression medicine called a monoamine oxidase inhibitor

(MAOI).

**Dexmethylphenidate hydrochloride extended-release capsules may not be right for you or your child. Before starting dexmethylphenidate hydrochloride extended-release capsules tell your or your child's healthcare provider about all health conditions (or a family history of), including:**

- heart problems, heart disease, heart defects, or high blood pressure
- mental problems, including psychosis, mania, bipolar illness, or depression
- circulation problems in fingers or toes
- have eye problems, including increased pressure in your eye, glaucoma, or problems with your close-up vision (farsightedness)
- have or had repeated movements or sounds (tics) or Tourette's syndrome, or have a family history of tics or Tourette's syndrome.
- if you are pregnant or plan to become pregnant. It is not known if dexmethylphenidate hydrochloride extended-release will harm your unborn baby.
- There is a pregnancy registry for females who are exposed to ADHD medications, including dexmethylphenidate hydrochloride extended-release, during pregnancy. The purpose of the registry is to collect information about the health of females exposed to dexmethylphenidate hydrochloride extended-release and their baby. If you or your child becomes pregnant during treatment with dexmethylphenidate hydrochloride extended-release, talk to your healthcare provider about registering with the National Pregnancy Registry of ADHD medications at 1-866-961-2388 or visit online at <https://womensmentalhealth.org/adhd-medications/>.
- if you are breastfeeding or plan to breastfeed. Dexmethylphenidate hydrochloride extended-release passes into your breast milk. Talk to your healthcare provider about the best way to feed the baby during treatment with dexmethylphenidate hydrochloride extended-release.

**Tell your healthcare provider about all of the medicines that you or your child takes, including prescription and over-the-counter medicines, vitamins, and herbal supplements.** Dexmethylphenidate hydrochloride extended-release and some medicines may interact with each other and cause serious side effects. Sometimes the doses of other medicines will need to be adjusted while taking dexmethylphenidate hydrochloride extended-release.

Your healthcare provider will decide whether dexmethylphenidate hydrochloride extended-release can be taken with other medicines.

**Especially tell your healthcare provider if you or your child takes:**

- anti-depression medicines, including MAOIs
- blood pressure medicines (anti-hypertensive)

Know the medicines that you or your child takes. Keep a list of your medicines with you to show your healthcare provider and pharmacist.

- You should not take dexmethylphenidate hydrochloride extended-release on the day of your operation if a certain type of anesthetic is used. This is because there is a chance of a sudden rise in blood pressure and heart rate during the operation.

**Do not start any new medicine while taking dexmethylphenidate hydrochloride extended-release capsules without talking to your healthcare provider first.**

**How should dexmethylphenidate hydrochloride extended-release capsules be taken?**

- Take dexmethylphenidate hydrochloride extended-release exactly as prescribed. Your healthcare provider may adjust the dose until it is right for you or your child.
- Take dexmethylphenidate hydrochloride extended-release once each day in the morning. Dexmethylphenidate hydrochloride extended-release is an extended-release capsule.
- Dexmethylphenidate hydrochloride extended-release can be taken with or without food. Taking dexmethylphenidate hydrochloride extended-release with food may slow the time it takes for the medicine to start working.
- Swallow dexmethylphenidate hydrochloride extended-release capsules whole with water or other liquids. **Do not chew, crush, or divide the capsules or the beads in the capsule.** If you or your child cannot swallow the capsule, open it and sprinkle the small beads of medicine over a spoonful of applesauce and swallow it right away without chewing.
- Your healthcare provider may do regular checks of the blood, heart, and blood pressure while taking dexmethylphenidate hydrochloride extended-release.
- Children should have their height and weight checked often while taking dexmethylphenidate hydrochloride extended-release. Dexmethylphenidate hydrochloride extended-release treatment may be stopped if a problem is found during these check-ups.

If you or your child take too much dexmethylphenidate hydrochloride extended-release, call your healthcare provider or Poison Help line at 1-800-222-1222 or go to the nearest hospital emergency room right away.

**What are the possible side effects of dexmethylphenidate hydrochloride extended-release capsules? Dexmethylphenidate hydrochloride extended-release may cause serious side effects, including:**

- see **“What is the most important information I should know about dexmethylphenidate hydrochloride extended-release?”** for information on

reported heart and mental problems.

- **painful and prolonged erections (priapism)** have occurred with methylphenidate. If you or your child develops priapism, seek medical help right away. Because of the potential for lasting damage, priapism should be evaluated by a healthcare provider immediately.
- **circulation problems in fingers and toes** (peripheral vasculopathy, including Raynaud's phenomenon):
  - fingers or toes may feel numb, cool, painful
  - fingers or toes may change color from pale, to blue, to red

Tell your healthcare provider if you or your child have, numbness, pain, skin color change, or sensitivity to temperature in the fingers or toes.

- **Call your healthcare provider right away if you have or your child has any signs of unexplained wounds appearing on fingers or toes while taking dexamethylphenidate hydrochloride extended-release.**
- **Slowing of growth (height and weight) in children.** Children should have their height and weight checked often during treatment with dexamethylphenidate hydrochloride extended-release. Dexamethylphenidate hydrochloride extended-release treatment may be stopped if your child is not growing or gaining weight.
- **Eye problems (increased pressure in the eye and glaucoma).** Call your healthcare provider right away if you or your child develop changes in your vision or eye pain, swelling, or redness.
- **New or worsening tics or worsening Tourette's syndrome.** Tell your healthcare provider if you or your child get any new or worsening tics or worsening Tourette's syndrome during treatment with Dexamethylphenidate hydrochloride extended-release.

#### **Common side effects include:**

##### **Children (6 to 17 years)**

- dyspepsia
- decreased appetite
- headache
- anxiety

##### **Adults**

- dry mouth
- dyspepsia
- headache
- anxiety
- pharyngolaryngeal pain

Call your doctor for medical advice about side effects. **You may report side effects to FDA at 1-800-FDA-1088.**

#### **How should I store dexamethylphenidate hydrochloride extended-release?**

- Store dexamethylphenidate hydrochloride extended-release capsules in a safe place and in a tightly closed container at

20°C to 25°C (68°F to 77°F).

- Dispose of remaining, unused, or expired dexamethylphenidate hydrochloride extended-release by a medicine take-back program at a U.S. Drug Enforcement Administration (DEA) authorized collection site. If no take-back program or DEA authorized collector is available, mix dexamethylphenidate hydrochloride extended-release with an undesirable, nontoxic substance such as dirt, cat litter, or used coffee grounds to make it less appealing to children and pets. Place the mixture in a container, such as a sealed plastic bag and throw away dexamethylphenidate hydrochloride extended-release in the household trash. Visit [www.fda.gov/drugdisposal](http://www.fda.gov/drugdisposal) for additional information on disposal of unused medicine.
- **Keep dexamethylphenidate hydrochloride extended-release and all medicines out of the reach of children.**

**General information about the safe and effective use of dexamethylphenidate hydrochloride extended-release capsules.**

Medicines are sometimes prescribed for purposes other than those listed in a Medication Guide. You can ask your pharmacist or healthcare provider for information about dexamethylphenidate hydrochloride extended-release that is written for healthcare professionals. Do not use dexamethylphenidate hydrochloride extended-release for a condition for which it was not prescribed. Do not give dexamethylphenidate hydrochloride extended-release to other people, even if they have the same symptoms that you have. It may harm them and it is against the law.

**What are the ingredients in dexamethylphenidate hydrochloride extended-release capsules?**

**Active Ingredient:** dexamethylphenidate hydrochloride

**Inactive Ingredients:** methacrylic acid copolymer, amino methacrylate copolymer, triethyl citrate, talc, sugar spheres, polyethylene glycol, gelatin, titanium dioxide and black ink.

The black ink contains shellac glaze, iron oxide black, n-butyl alcohol, propylene glycol, FD&C Blue #1, FD&C Blue #2, FD&C Red #40 and D&C Yellow #10. The 5 mg also contains FD&C Blue #1 and FD&C Red #3. The 10 mg contains FD&C Yellow #6. The 15 mg contains FD&C Blue #1 and FD&C Yellow #6. The 25 mg, 30 mg, 35 mg and 40 mg contains yellow iron oxide.

**This Medication Guide has been approved by the U.S. Food and Drug Administration.**

**For Medication Guide, please visit [www.endo.com](http://www.endo.com).**

Manufactured for:  
Endo USA  
Malvern, PA 19355

© 2024 Endo, Inc. or one of its affiliates.

R05/2024

**Dexamethylphenidate Hydrochloride Extended-Release Capsules 10 mg (CII)**



Each extended-release capsule contains:  
Dexamethylphenidate Hydrochloride, 10 mg.

Keep this and all drugs out of the reach of children.

Store at 20° to 25°C (68° to 77°F); excursions permitted to 15° to 30°C (59° to 86°F) [See USP Controlled Room Temperature].

Dispense in a tight container, USP.

Usual Dosage: Scan Package Insert QR Code. Pharmacist: Dispense the Medication Guide to each patient.



Package Insert

NDC 63629-2171-1

**Dexamethylphenidate Hydrochloride Extended-Release Capsules**

**10 mg**



Relabeled by:  
Bryant Ranch Prepack, Inc.  
Burbank, CA 91504 USA

Rx only  
**100 Capsules**

Manufactured by:  
Par Formulations Private Limited



6362921711



## DEXMETHYLPHENIDATE HYDROCHLORIDE

dexamethylphenidate hydrochloride capsule, extended release

### Product Information

<b>Product Type</b>	HUMAN PRESCRIPTION DRUG	<b>Item Code (Source)</b>	NDC:63629-2171(NDC:49884-049)
<b>Route of Administration</b>	ORAL	<b>DEA Schedule</b>	CII

### Active Ingredient/Active Moiety

Ingredient Name	Basis of Strength	Strength
<b>DEXMETHYLPHENIDATE HYDROCHLORIDE</b> (UNII: 1678OK0E08) (DEXMETHYLPHENIDATE - UNII:M32RH9MFGP)	DEXMETHYLPHENIDATE HYDROCHLORIDE	10 mg

### Inactive Ingredients

Ingredient Name	Strength
<b>GELATIN, UNSPECIFIED</b> (UNII: 2G86QN327L)	
<b>ISOPROPYL ALCOHOL</b> (UNII: ND2M416302)	
<b>METHACRYLIC ACID - ETHYL ACRYLATE COPOLYMER (1:1) TYPE A</b> (UNII: NX76LV5T8J)	
<b>METHACRYLIC ACID - METHYL METHACRYLATE COPOLYMER (1:1)</b> (UNII: 74G4R6TH13)	
<b>POLYETHYLENE GLYCOL 400</b> (UNII: B697894SGQ)	
<b>TALC</b> (UNII: 7SEV7J4R1U)	
<b>TITANIUM DIOXIDE</b> (UNII: 15FIX9V2JP)	
<b>TRIETHYL CITRATE</b> (UNII: 8Z96QXD6UM)	
<b>FD&amp;C YELLOW NO. 6</b> (UNII: H77VEI93A8)	
<b>SHELLAC</b> (UNII: 46N107B71O)	
<b>FERROSFERRIC OXIDE</b> (UNII: XM0M87F357)	
<b>BUTYL ALCOHOL</b> (UNII: 8PJ61P6TS3)	
<b>1-PROPOXY-2-PROPANOL</b> (UNII: 152BY1743W)	
<b>FD&amp;C BLUE NO. 1</b> (UNII: H3R47K3TBD)	
<b>FD&amp;C BLUE NO. 2</b> (UNII: L06K8R7DQK)	
<b>FD&amp;C RED NO. 40</b> (UNII: WZB9127XOA)	
<b>D&amp;C YELLOW NO. 10</b> (UNII: 35SW5USQ3G)	

### Product Characteristics

<b>Color</b>	brown (beige)	<b>Score</b>	no score
--------------	---------------	--------------	----------

<b>Shape</b>	CAPSULE		<b>Size</b>	18mm
<b>Flavor</b>			<b>Imprint Code</b>	par;049
<b>Contains</b>				
<b>Packaging</b>				
<b>#</b>	<b>Item Code</b>	<b>Package Description</b>	<b>Marketing Start Date</b>	<b>Marketing End Date</b>
1	NDC:63629-2171-1	100 in 1 BOTTLE; Type 0: Not a Combination Product	08/08/2024	
<b>Marketing Information</b>				
<b>Marketing Category</b>	<b>Application Number or Monograph Citation</b>		<b>Marketing Start Date</b>	<b>Marketing End Date</b>
ANDA	ANDA202842		01/05/2017	

**Labeler** - Bryant Ranch Prepack (171714327)

**Registrant** - Bryant Ranch Prepack (171714327)

<b>Establishment</b>			
<b>Name</b>	<b>Address</b>	<b>ID/FEI</b>	<b>Business Operations</b>
Bryant Ranch Prepack		171714327	REPACK(63629-2171) , RELABEL(63629-2171)

Revised: 8/2024

Bryant Ranch Prepack