

# **CAROSPIR- carospir suspension**

## **CMP Pharma, Inc.**

-----

### **HIGHLIGHTS OF PRESCRIBING INFORMATION**

**These highlights do not include all the information needed to use CAROSPIR® safely and effectively. See full prescribing information for CAROSPIR®.**

**CAROSPIR® (spironolactone) Oral Suspension, for oral use**  
**Initial U.S. Approval: 1960**

### **INDICATIONS AND USAGE**

CAROSPIR is an antagonist of aldosterone indicated for:

- the treatment of NYHA Class III-IV heart failure and reduced ejection fraction to increase survival, manage edema, and to reduce the need for hospitalization for heart failure (1.1)
- use as an add-on therapy for the treatment of hypertension, to lower blood pressure. Lowering blood pressure reduces the risk of fatal and nonfatal cardiovascular events, primarily strokes and myocardial infarctions (1.2)
- the management of edema in adult cirrhotic patients when edema is not responsive to fluid and sodium restrictions (1.3)

### **DOSAGE AND ADMINISTRATION**

- CAROSPIR is not therapeutically equivalent to Aldactone (2.1)
- Heart Failure: Initiate treatment at 20 mg once daily. (2.2)
- Hypertension: Initiate treatment at 20 to 75 mg daily in either single or divided doses (2.3)
- Edema associated with Hepatic Cirrhosis: Initiate therapy in a hospital setting and titrate slowly. The initial recommended daily dose is 75 mg in either single or divided doses (2.4)

### **DOSAGE FORMS AND STRENGTHS**

Oral suspension, 25 mg/5 mL (3)

### **CONTRAINDICATIONS**

CAROSPIR is contraindicated in patients with (4)

- Hyperkalemia
- Addison's disease
- Concomitant use of eplerenone

### **WARNINGS AND PRECAUTIONS**

- Hyperkalemia: Monitor serum potassium within one week of initiation and regularly thereafter (5.1)
- Hypotension and Worsening Renal Function: Monitor volume status and renal function periodically (5.2)
- Electrolyte and Metabolic Abnormalities: Monitor serum electrolytes, uric acid and blood glucose periodically (5.3)
- Gynecomastia: CAROSPIR can cause gynecomastia (5.4)

### **ADVERSE REACTIONS**

The most common adverse reaction (incidence > 5%) with CAROSPIR treatment is gynecomastia (6)

**To report SUSPECTED ADVERSE REACTIONS, contact CMP Pharma at 1-844-321-1443 or FDA at 1-800-FDA-1088 or [www.fda.gov/medwatch](http://www.fda.gov/medwatch).**

### **DRUG INTERACTIONS**

- Agents increasing serum potassium: Concomitant administration can lead to hyperkalemia (5.1, 7.1)
- Lithium: Increased risk of lithium toxicity (7.2)
- NSAIDs: May reduce the diuretic, natriuretic and antihypertensive effect of CAROSPIR (7.3)
- Digoxin: CAROSPIR can interfere with radioimmunologic assays of digoxin exposure (7.4)
- Cholestyramine: Hyperkalemic metabolic acidosis has been reported with concomitant use (7.5)
- Acetylsalicylic Acid (ASA): ASA may reduce the efficacy of spironolactone (7.6)

### **USE IN SPECIFIC POPULATIONS**

- Pregnancy; Based on animal data, spironolactone may affect sex differentiation of the male during

**FULL PRESCRIBING INFORMATION: CONTENTS\***

**1 INDICATIONS AND USAGE**

- 1.1 Heart Failure
- 1.2 Hypertension
- 1.3 Edema caused by Cirrhosis

**2 DOSAGE AND ADMINISTRATION**

- 2.1 General Considerations
- 2.2 Treatment of Heart Failure
- 2.3 Treatment of Essential Hypertension
- 2.4 Treatment of Edema associated with Hepatic Cirrhosis

**3 DOSAGE FORMS AND STRENGTHS**

**4 CONTRAINDICATIONS**

**5 WARNINGS AND PRECAUTIONS**

- 5.1 Hyperkalemia
- 5.2 Hypotension and Worsening Renal Function
- 5.3 Electrolyte and Metabolic Abnormalities
- 5.4 Gynecomastia

**6 ADVERSE REACTIONS**

**7 DRUG INTERACTIONS**

- 7.1 Drugs and Supplements Increasing Serum Potassium
- 7.2 Lithium
- 7.3 Nonsteroidal Anti-Inflammatory Drugs (NSAIDs)
- 7.4 Digoxin
- 7.5 Cholestyramine
- 7.6 Acetylsalicylic Acid
- 7.7 CYP2C8 and CYP3A Substrates

**8 USE IN SPECIFIC POPULATIONS**

- 8.1 Pregnancy
- 8.2 Lactation
- 8.4 Pediatric Use
- 8.5 Geriatric Use
- 8.6 Use in Renal Impairment
- 8.7 Use in Hepatic Impairment

**10 OVERDOSAGE**

**11 DESCRIPTION**

**12 CLINICAL PHARMACOLOGY**

- 12.1 Mechanism of Action
- 12.2 Pharmacodynamics
- 12.3 Pharmacokinetics

**13 NONCLINICAL TOXICOLOGY**

- 13.1 Carcinogenesis, Mutagenesis, Impairment of Fertility

**14 CLINICAL STUDIES**

- 14.1 Heart failure
- 14.2 Hypertension

## **16 HOW SUPPLIED/STORAGE AND HANDLING**

## **17 PATIENT COUNSELING INFORMATION**

\* Sections or subsections omitted from the full prescribing information are not listed.

---

## **FULL PRESCRIBING INFORMATION**

### **1 INDICATIONS AND USAGE**

#### **1.1 Heart Failure**

CAROSPIR is indicated for treatment of NYHA Class III-IV heart failure and reduced ejection fraction in adult patients to increase survival, manage edema, and to reduce the need for hospitalization for heart failure.

CAROSPIR is usually administered in conjunction with other heart failure therapies.

#### **1.2 Hypertension**

CAROSPIR is indicated as an add-on therapy for the treatment of hypertension, to lower blood pressure in adult patients who are not adequately controlled on other agents. Lowering blood pressure reduces the risk of fatal and nonfatal cardiovascular events, primarily strokes and myocardial infarctions. These benefits have been seen in controlled trials of antihypertensive drugs from a wide variety of pharmacologic classes.

Control of high blood pressure should be part of comprehensive cardiovascular risk management, including, as appropriate, lipid control, diabetes management, antithrombotic therapy, smoking cessation, exercise, and limited sodium intake. Many patients will require more than one drug to achieve blood pressure goals. For specific advice on goals and management, see published guidelines, such as those of the National High Blood Pressure Education Program's Joint National Committee on Prevention, Detection, Evaluation, and Treatment of High Blood Pressure (JNC).

Numerous antihypertensive drugs, from a variety of pharmacologic classes and with different mechanisms of action, have been shown in randomized controlled trials to reduce cardiovascular morbidity and mortality, and it can be concluded that it is blood pressure reduction, and not some other pharmacologic property of the drugs, that is largely responsible for those benefits. The largest and most consistent cardiovascular outcome benefit has been a reduction in the risk of stroke, but reductions in myocardial infarction and cardiovascular mortality also have been seen regularly. Elevated systolic or diastolic pressure causes increased cardiovascular risk, and the absolute risk increase per mmHg is greater at higher blood pressures, so that even modest reductions of severe hypertension can provide substantial benefit. Relative risk reduction from blood pressure reduction is similar across populations with varying absolute risk, so the absolute benefit is greater in patients who are at higher risk independent of their hypertension (for example, patients with diabetes or hyperlipidemia), and such patients would be expected to benefit from more aggressive

treatment to a lower blood pressure goal.

Some antihypertensive drugs have smaller blood pressure effects (as monotherapy) in black patients, and many antihypertensive drugs have additional approved indications and effects (e.g. on angina, heart failure, or diabetic kidney disease). These considerations may guide selection of therapy.

### **1.3 Edema caused by Cirrhosis**

CAROSPIR is indicated for the management of edema in adult cirrhotic patients when edema is not responsive to fluid and sodium restriction.

## **2 DOSAGE AND ADMINISTRATION**

### **2.1 General Considerations**

CAROSPIR is not therapeutically equivalent to Aldactone. Follow dosing instructions given here. In patients requiring a dose greater than 100 mg, use another formulation. Doses of the suspension greater than 100 mg may result in spironolactone concentrations higher than expected [see *Clinical Pharmacology (12.3)*].

CAROSPIR can be taken with or without food, but should be taken consistently with respect to food [see *Clinical Pharmacology (12.3)*].

### **2.2 Treatment of Heart Failure**

In patients with serum potassium  $\leq 5.0$  mEq/L and eGFR  $> 50$  mL/min/1.73m<sup>2</sup>, initiate treatment at 20 mg (4 mL) once daily. Patients who tolerate 20 mg (4 mL) once daily may have their dosage increased to 37.5 mg (7.5 mL) once daily as clinically indicated. Patients who develop hyperkalemia on 20 mg (4 mL) once daily may have their dosage reduced to 20 mg (4 mL) every other day [see *Warning and Precautions 5.1*]. In patients with an eGFR between 30 and 50 mL/min/1.73m<sup>2</sup>, consider initiating treatment at 10 mg (2 mL) because of the risk of hyperkalemia [see *Use in Specific Populations (8.6)*].

### **2.3 Treatment of Essential Hypertension**

The recommended initial daily dose is 20 mg (4 mL) to 75 mg (15 mL) administered in either single or divided doses. Dosage can be titrated at two-week intervals. Doses  $> 75$  mg/day generally do not provide additional reductions in blood pressure.

### **2.4 Treatment of Edema associated with Hepatic Cirrhosis**

In patients with cirrhosis, initiate therapy in a hospital setting and titrate slowly [see *Use in Specific Populations (8.6)*] and *Clinical Pharmacology (12.3)*]. The recommended initial daily dose is 75 mg (15 mL) administered in either single or divided doses. In patients requiring titration above 100 mg, use another formulation [see *Dosage and Administration (2.1)*]. When given as the sole agent for diuresis, administer for at least five days before increasing dose to obtain desired effect.

## **3 DOSAGE FORMS AND STRENGTHS**

Oral Suspension: 25 mg/5 mL (5 mg/mL); white to off-white, banana flavored.

## **4 CONTRAINDICATIONS**

CAROSPIR is contraindicated for patients with the following conditions:

- Hyperkalemia
- Addison's disease
- Concomitant use of eplerenone

## **5 WARNINGS AND PRECAUTIONS**

### **5.1 Hyperkalemia**

CAROSPIR can cause hyperkalemia. This risk is increased by impaired renal function or concomitant potassium supplementation, potassium-containing salt substitutes or drugs that increase potassium, such as angiotensin converting enzyme inhibitors and angiotensin receptor blockers [see *Drug Interactions (7.1)*].

Monitor serum potassium within 1 week of initiation or titration of CAROSPIR and regularly thereafter. Closer monitoring may be needed when CAROSPIR is given with other drugs that cause hyperkalemia or in patients with impaired renal function.

If hyperkalemia occurs, decrease the dose or discontinue CAROSPIR and treat hyperkalemia.

### **5.2 Hypotension and Worsening Renal Function**

Excessive diuresis may cause symptomatic dehydration, hypotension and worsening renal function, particularly in salt-depleted patients or those taking angiotensin converting enzyme inhibitors and angiotensin II receptor blockers. Worsening of renal function can also occur with concomitant use of nephrotoxic drugs (e.g., aminoglycosides, cisplatin, and NSAIDs). Monitor volume status and renal function periodically.

### **5.3 Electrolyte and Metabolic Abnormalities**

In addition to causing hyperkalemia, CAROSPIR can cause hyponatremia, hypomagnesemia, hypocalcemia, hypochloremic alkalosis, and hyperglycemia. Asymptomatic hyperuricemia can occur and rarely gout is precipitated. Monitor serum electrolytes, uric acid and blood glucose periodically.

### **5.4 Gynecomastia**

CAROSPIR can cause gynecomastia. In RALES, patients with heart failure treated with a mean dose of 26 mg of spironolactone once daily, about 9% of the male subjects developed gynecomastia. The risk of gynecomastia increases in a dose-dependent manner with an onset that varies widely from 1-2 months to over a year. Gynecomastia is usually reversible.

## **6 ADVERSE REACTIONS**

The following clinically significant adverse reactions are described elsewhere in the labeling:

- Hyperkalemia [see *Warnings and Precautions (5.1)*]
- Hypotension and Worsening Renal Function [see *Warnings and Precautions (5.2)*]
- Electrolyte and Metabolic Abnormalities [see *Warnings and Precautions (5.3)*]
- Gynecomastia [see *Warnings and Precautions (5.4)*]
- Impaired neurological function/ coma in patients with hepatic impairment, cirrhosis and ascites [see *Use in Specific Populations (8.7)*]

The following adverse reactions associated with the use of spironolactone were identified in clinical trials or postmarketing reports. Because these reactions were reported voluntarily from a population of uncertain size, it is not always possible to estimate their frequency, reliably, or to establish a causal relationship to drug exposure.

Digestive: Gastric bleeding, ulceration, gastritis, diarrhea and cramping, nausea, vomiting.

Reproductive: Gynecomastia [see *Warnings and Precautions (5.4)*], decreased libido, inability to achieve or maintain erection, irregular menses or amenorrhea, postmenopausal bleeding, breast and nipple pain.

Hematologic: Leukopenia (including agranulocytosis), thrombocytopenia.

Hypersensitivity: Fever, urticaria, maculopapular or erythematous cutaneous eruptions, anaphylactic reactions, vasculitis.

Metabolism: Hyperkalemia, electrolyte disturbances [see *Warnings and Precautions (5.1, 5.3)*], hyponatremia, hypovolemia.

Musculoskeletal: Leg cramps.

Nervous system /psychiatric: Lethargy, mental confusion, ataxia, dizziness, headache, drowsiness.

Liver / biliary: A very few cases of mixed cholestatic/hepatocellular toxicity, with one reported fatality, have been reported with spironolactone administration.

Renal: Renal dysfunction (including renal failure).

Skin: Stevens-Johnson Syndrome (SJS), toxic epidermal necrolysis (TEN), drug rash with eosinophilia and systemic symptoms (DRESS), alopecia, pruritis, chloasma.

## **7 DRUG INTERACTIONS**

### **7.1 Drugs and Supplements Increasing Serum Potassium**

Concomitant administration of CAROSPIR with potassium supplementation or drugs that can increase potassium may lead to severe hyperkalemia. In general, discontinue potassium supplementation in heart failure patients who start CAROSPIR [see *Warnings and Precautions (5.1) and Clinical Pharmacology (12.3)*]. Check serum potassium levels when ACE inhibitor or ARB therapy is altered in patients receiving CAROSPIR.

Examples of drugs that can increase potassium include:

- ACE inhibitors
- angiotensin receptor blockers

- aldosterone blockers
- non-steroidal anti-inflammatory drugs (NSAIDs)
- heparin and low molecular weight heparin
- trimethoprim

## **7.2 Lithium**

Like other diuretics, CAROSPIR reduces the renal clearance of lithium, thus increasing the risk of lithium toxicity. Monitor lithium levels periodically when CAROSPIR is coadministered [see *Clinical Pharmacology (12.3)*].

## **7.3 Nonsteroidal Anti-Inflammatory Drugs (NSAIDs)**

In some patients, the administration of an NSAID can reduce the diuretic, natriuretic, and antihypertensive effect of loop, potassium-sparing, and thiazide diuretics. Therefore, when CAROSPIR and NSAIDs are used concomitantly, monitor closely to determine if the desired effect of the diuretic is obtained [see *Clinical Pharmacology (12.3)*].

## **7.4 Digoxin**

Spironolactone and its metabolites increase the apparent exposure to digoxin. In patients taking concomitant digoxin, measure serum digoxin concentrations before initiating spironolactone using an assay that does not interact with spironolactone. Reduce digoxin concentrations by decreasing the dose by approximately 15-30% or by modifying the dosing frequency and continue monitoring [see *Clinical Pharmacology (12.3)*].

## **7.5 Cholestyramine**

Hyperkalemic metabolic acidosis has been reported in patients given spironolactone concurrently with cholestyramine.

## **7.6 Acetylsalicylic Acid**

Acetylsalicylic acid may reduce the efficacy of spironolactone. Therefore, when CAROSPIR and acetylsalicylic acid are used concomitantly, CAROSPIR may need to be titrated to higher maintenance dose and the patient should be observed closely to determine if the desired effect is obtained [see *Clinical Pharmacology (12.3)*].

## **7.7 CYP2C8 and CYP3A Substrates**

Spironolactone is an irreversible inhibitor for CYP2C8 and CYP3A4/5 in vitro [see *Clinical Pharmacology (12.3)*]. Therefore, spironolactone may increase the exposure of other coadministered drugs that are metabolized by CYP2C8 and CYP3A4/5. Dosage adjustments of the drugs metabolized by CYP2C8 (e.g., repaglinide) and CYP3A4/5 (e.g., midazolam, sirolimus and tacrolimus) may be necessary if they are given concurrently with spironolactone.

# **8 USE IN SPECIFIC POPULATIONS**

## **8.1 Pregnancy**

## Risk Summary

Based on mechanism of action and findings in animal studies, spironolactone may affect sex differentiation of the male during embryogenesis [see *Clinical Pharmacology (12.1)*]. Rat embryofetal studies report feminization of male fetuses and endocrine dysfunction in females exposed to spironolactone in utero. Limited available data from published case reports and case series did not demonstrate an association of major malformations or other adverse pregnancy outcomes with spironolactone. There are risks to the mother and fetus associated with heart failure, cirrhosis and poorly controlled hypertension during pregnancy (see Clinical Considerations). Because of the potential risk to the male fetus due to anti-androgenic properties of spironolactone and animal data, avoid spironolactone in pregnant women or advise a pregnant woman of the potential risk to a male fetus.

The estimated background risk of major congenital anomalies and miscarriage for the indicated population is unknown. All pregnancies have a background risk of birth defect, loss or other adverse outcomes. In the U.S. general population, the estimated background risk of major congenital anomalies and miscarriage in the clinically recognized pregnancies is 2% to 4% and 15% to 20%, respectively.

## Clinical Considerations

**Disease-Associated Maternal and/or Embryo/Fetal Risk** Pregnant women with congestive heart failure are at increased risk for preterm birth. Stroke volume and heart rate increase during pregnancy, increasing cardiac output, especially during the first trimester. Clinical classification of heart disease may worsen with pregnancy and lead to maternal death. Closely monitor pregnant patients for destabilization of their heart failure.

Pregnant women with symptomatic cirrhosis generally have poor outcomes including hepatic failure, variceal hemorrhage, preterm delivery, fetal growth restriction and maternal death. Outcomes are worse with coexisting esophageal varices. Pregnant women with cirrhosis of the liver should be carefully monitored and managed accordingly.

Hypertension in pregnancy increases the maternal risk for pre-eclampsia, gestational diabetes, premature delivery, and delivery complications (e.g., need for cesarean section, and post-partum hemorrhage). Hypertension increases the fetal risk for intrauterine growth restriction and intrauterine death.

## Data

### Animal Data

Teratology studies with spironolactone have been carried out in mice and rabbits at doses of up to 20 mg/kg/day. On a body surface area basis, this dose in the mouse is substantially below the maximum recommended human dose and, in the rabbit, approximates the maximum recommended human dose. No teratogenic or other embryo toxic effects were observed in mice, but the 20 mg/kg dose caused an increased rate of resorption and a lower number of live fetuses in rabbits. Because of its antiandrogenic activity and the requirement of testosterone for male morphogenesis, CAROSPIR may have the potential for adversely affecting sex differentiation of the male during embryogenesis. When administered to rats at 200 mg/kg/day, a dose 10 times the human dose of 200 mg/day, when based on body surface area, between gestation days 13 and 21 (late embryogenesis and fetal development), feminization of male fetuses was observed. Offspring exposed during late pregnancy to 50 and 100



mg/kg/day doses of spironolactone exhibited changes in the reproductive tract including dose-dependent decreases in weights of the ventral prostate and seminal vesicle in males, ovaries and uteri that were enlarged in females, and other indications of endocrine dysfunction, that persisted into adulthood. Spironolactone (CAROSPIR) has known endocrine effects in animals including progestational and antiandrogenic effects.

## **8.2 Lactation**

### **Risk Summary**

Spironolactone is not present in breastmilk; however, limited data from a lactating woman at 17 days postpartum reports the presence of the active metabolite, canrenone, in human breast milk in low amounts that are expected to be clinically inconsequential. In this case, there were no adverse effects reported for the breastfed infant after short term exposure to spironolactone; however, long term effects on a breastfed infant are unknown. There are no data on spironolactone effects on milk production. Consider the developmental and health benefits of breastfeeding along with the mother's clinical need for spironolactone and any potential adverse effects on the breastfed child from spironolactone or from the underlying maternal condition.

## **8.4 Pediatric Use**

Safety and effectiveness in pediatric patients have not been established.

CAROSPIR is not recommended for the treatment of hypertension in pediatric patients because of the potential risks associated with the antiandrogenic, progestogenic, and estrogenic properties of spironolactone in pediatric patients.

## **8.5 Geriatric Use**

CAROSPIR is substantially excreted by the kidney, and the risk of adverse reactions to this drug may be greater in patients with impaired renal function. Because elderly patients are more likely to have decreased renal function, monitor renal function.

## **8.6 Use in Renal Impairment**

CAROSPIR is substantially excreted by the kidney, and the risk of adverse reactions to this drug may be greater in patients with impaired renal function. Patients with renal impairment are at increased risk of hyperkalemia. Monitor potassium closely.

## **8.7 Use in Hepatic Impairment**

CAROSPIR can cause sudden alterations of fluid and electrolyte balance which may precipitate impaired neurological function, worsening hepatic encephalopathy and coma in patients with hepatic disease with cirrhosis and ascites. In these patients, initiate CAROSPIR in the hospital [see *Dosage and Administration (2.4)*, and *Clinical Pharmacology (12.3)*].

Clearance of spironolactone and its metabolites is reduced in patients with cirrhosis. In patients with cirrhosis, start with lowest initial dose and titrate slowly [see *Dosage and Administration (2.1, 2.4)*, and *Clinical Pharmacology (12.3)*].

## **10 OVERDOSAGE**

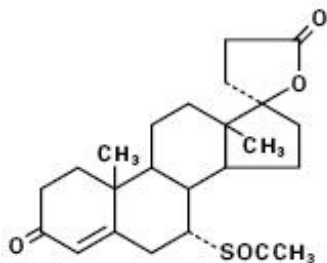
The oral LD50 of spironolactone is greater than 1000 mg/kg in mice, rats, and rabbits.

Acute overdosage of CAROSPIR may be manifested by drowsiness, mental confusion, maculopapular or erythematous rash, nausea, vomiting, dizziness, or diarrhea. Rarely, instances of hyponatremia, hyperkalemia, or hepatic coma may occur in patients with severe liver disease, but these are unlikely due to acute overdosage. Hyperkalemia may occur, especially in patients with impaired renal function.

Treatment: Induce vomiting or evacuate the stomach by lavage. There is no specific antidote. Treatment is supportive to maintain hydration, electrolyte balance, and vital functions. Patients who have renal impairment may develop hyperkalemia. In such cases, discontinue CAROSPIR.

## 11 DESCRIPTION

CAROSPIR Oral Suspension contains 25 mg of the aldosterone antagonist spironolactone, 17-hydroxy-7 $\alpha$ -mercapto-3-oxo-17 $\alpha$ -pregn-4-ene-21- carboxylic acid  $\gamma$ -lactone acetate per 5 mL, which has the following structural formula:



Spironolactone is practically insoluble in water, soluble in alcohol, and freely soluble in benzene and in chloroform.

Inactive ingredients include sorbic acid, potassium sorbate, citric acid anhydrous, sodium citrate dihydrate, simethicone emulsion, saccharin sodium, xanthan gum, Magnasweet 110, glycerin, banana flavor, and purified water.

## 12 CLINICAL PHARMACOLOGY

### 12.1 Mechanism of Action

Spironolactone and its active metabolites are specific pharmacologic antagonists of aldosterone, acting primarily through competitive binding of receptors at the aldosterone-dependent sodium-potassium exchange site in the distal convoluted renal tubule. Spironolactone causes increased amounts of sodium and water to be excreted, while potassium is retained. Spironolactone acts both as a diuretic and as an antihypertensive drug by this mechanism. It may be given alone or with other diuretic agents that act more proximally in the renal tubule.

### 12.2 Pharmacodynamics

Aldosterone antagonist activity: Increased levels of the mineralocorticoid, aldosterone, are present in primary and secondary hyperaldosteronism. Edematous states in which secondary aldosteronism is usually involved include congestive heart failure, hepatic cirrhosis, and nephrotic syndrome. By competing with aldosterone for receptor sites,

spironolactone provides effective therapy for the edema and ascites in those conditions. Spironolactone counteracts secondary aldosteronism induced by the volume depletion and associated sodium loss caused by active diuretic therapy.

### **12.3 Pharmacokinetics**

For an equivalent dose, CAROSPIR results in 15 to 37% higher serum concentration compared to Aldactone tablets. Information about the dose proportionality of spironolactone tablets is limited and, based on the results of studies comparing the suspension to tablets, doses of suspension higher than 100 mg might result in spironolactone concentrations that could be higher than expected.

#### Absorption

The peak plasma concentration (C<sub>max</sub>) of spironolactone is reached 0.5 to 1.5 hours after dosing in healthy volunteers; for the active metabolite canrenone, the C<sub>max</sub> is reached around 2.5 to 5 hours after dosing.

*Effect of food:* A high fat and high calorie meal (57% of the ~1000 kcal of the meal were from fat) increased the bioavailability of spironolactone (as measured by AUC) by approximately 90%. Patients should establish a routine pattern for taking CAROSPIR with regard to meals [see *Dosage and Administration (2.1)*].

#### Distribution

Spironolactone and its metabolites are more than 90% bound to plasma proteins.

#### Elimination

The half-life of spironolactone is approximately 1- 2 hour, and the half-life of canrenone, 7- $\alpha$ -(thiomethyl) spiro lactone (TMS), and 6- $\beta$ -hydroxy-7- $\alpha$ -(thiomethyl) spiro lactone (HTMS) ranged from 10 to 35 hours.

#### Metabolism:

Spironolactone is rapidly and extensively metabolized primarily by CYP 3A4/5, and to a lesser extent by CYP2C8. Metabolites can be divided into two main categories: those in which sulfur of the parent molecule is removed (e.g., canrenone) and those in which the sulfur is retained (e.g., TMS and HTMS). In humans, the potencies of TMS and 7- $\alpha$ -thiospirolactone in reversing the effects of the synthetic mineralocorticoid, fludrocortisone, on urinary electrolyte composition were approximately a third relative to spironolactone. However, since the serum concentrations of these steroids were not determined, their incomplete absorption and/or first-pass metabolism could not be ruled out as a reason for their reduced in vivo activities.

*Excretion:* The metabolites are excreted primarily in the urine and secondarily in bile.

#### Specific Populations

The impact of age, sex, race/ethnicity, and renal impairment on the pharmacokinetics of spironolactone have not been specifically studied.

*Patients with Hepatic Impairment:* The terminal half-life of spironolactone has been reported to be increased in patients with cirrhotic ascites [see *Use in Specific Populations (8.7)*].

#### Drug Interaction Studies:

**Drugs and Supplements Increasing Serum Potassium:** Concomitant administration of CAROSPIR with potassium supplementation, salt substitutes containing potassium, a diet rich in potassium, or drugs that can increase potassium, including ACE inhibitors,

angiotensin II antagonists, non-steroidal anti-inflammatory drugs (NSAIDs), heparin and low molecular weight heparin, may lead to severe hyperkalemia [see *Warnings and Precautions (5.1)*].

*Lithium*: CAROSPIR reduces the renal clearance of lithium, inducing a high risk of lithium toxicity [see *Warnings and Precautions (5.1)* and *Drug Interactions (7.2)*].

*Nonsteroidal Anti-Inflammatory Drugs (NSAIDs)*: In some patients, the administration of an NSAID can reduce the diuretic, natriuretic, and antihypertensive effect of loop, potassium-sparing, and thiazide diuretics [see *Drug Interactions (7.3)*].

*Acetylsalicylic acid*: A single dose of 600 mg of acetylsalicylic acid inhibited the natriuretic effect of spironolactone, which was hypothesized to be due to inhibition of tubular secretion of canrenone, causing decreased effectiveness of spironolactone [see *Drug Interactions (7.6)*].

*In Vitro Studies*: Spironolactone is an irreversible inhibitor for CYP2C8 and CYP3A4/5.

*Digoxin*: CAROSPIR increased the  $C_{max}$  and  $AUC_{0-96}$  of a single dose of digoxin by 55% and 18% as compared to digoxin administered alone. Renal clearance of digoxin decreased by approximately 11%, and the  $t_{max}$  and terminal  $t_{1/2}$  of digoxin were not changed when coadministered with spironolactone [see *Drug Interactions (7.4)*].

## **13 NONCLINICAL TOXICOLOGY**

### **13.1 Carcinogenesis, Mutagenesis, Impairment of Fertility**

#### Carcinogenesis

Orally administered spironolactone has been shown to be a tumorigen in dietary administration studies performed in rats, with its proliferative effects manifested on endocrine organs and the liver. In an 18-month study using doses of about 50, 150, and 500 mg/kg/day, there were statistically significant increases in benign adenomas of the thyroid and testes and, in male rats, a dose-related increase in proliferative changes in the liver (including hepatocytomegaly and hyperplastic nodules). In a 24-month study in which the same strain of rat was administered doses of about 10, 30, 100, and 150 mg spironolactone/kg/day, the range of proliferative effects included significant increases in hepatocellular adenomas and testicular interstitial cell tumors in males, and significant increases in thyroid follicular cell adenomas and carcinomas in both sexes. There was also a statistically significant, but not dose-related, increase in benign uterine endometrial stromal polyps in females. No increased tumors were seen at doses of 100 mg/kg/day. This dose represents about 5-times the human recommended daily dose of 200 mg/day, when based on body surface area.

#### Mutagenesis

Neither spironolactone nor potassium canrenoate produced mutagenic effects in tests using bacteria or yeast. In the absence of metabolic activation, neither spironolactone nor potassium canrenoate has been shown to be mutagenic in mammalian tests in vitro. In the presence of metabolic activation, Spironolactone has been reported to be negative in some mammalian mutagenicity tests in vitro and inconclusive (but slightly positive) for mutagenicity in other mammalian tests in vitro. In the presence of metabolic activation, potassium canrenoate has been reported to test positive for mutagenicity in some mammalian tests in vitro, inconclusive in others, and negative in still others.

### Impairment of Fertility

In a three-litter reproduction study in which female rats received dietary doses of 15 and 50 mg spironolactone/kg/day, there were no effects on mating and fertility, but there was a small increase in incidence of stillborn pups at 50 mg/kg/day. When injected into female rats (100 mg/kg/day for 7 days, i.p.), spironolactone was found to increase the length of the estrous cycle by prolonging diestrus during treatment and inducing constant diestrus during a two-week post-treatment observation period. These effects were associated with retarded ovarian follicle development and a reduction in circulating estrogen levels, which would be expected to impair mating, fertility, and fecundity. Spironolactone (100 mg/kg/day), administered i.p. to female mice during a two-week cohabitation period with untreated males, decreased the number of mated mice that conceived (effect shown to be caused by an inhibition of ovulation) and decreased the number of implanted embryos in those that became pregnant (effect shown to be caused by an inhibition of implantation), and at 200 mg/kg, also increased the latency period to mating.

## **14 CLINICAL STUDIES**

### **14.1 Heart failure**

The Randomized Aldactone Evaluation Study (RALES) was a placebo-controlled, double-blind study of the effect of spironolactone on mortality in patients with highly symptomatic heart failure and reduced ejection fraction. To be eligible to participate, patients had to have an ejection fraction of  $\leq 35\%$ , NYHA Class III-IV symptoms, and a history of NYHA class IV symptoms within the last 6 months before enrollment. Patients with a baseline serum creatinine of  $>2.5$  mg/dL or a recent increase of 25% or with a baseline serum potassium of  $>5.0$  mEq/L were excluded.

Follow-up visits and laboratory measurements (including serum potassium and creatinine) were performed every four weeks for the first 12 weeks, then every 3 months for the first year, and then every 6 months thereafter.

The RALES study was conducted with a formulation of spironolactone that is not therapeutically equivalent to CAROSPIR [see *Dosage and Administration (2.1)*, and *Clinical Pharmacology (12.3)*]. The initial dose of spironolactone was 25 mg once daily. Patients who were intolerant of the initial dosage regimen had their dose decreased to one 25 mg tablet every other day at one to four weeks. Patients who were tolerant of one tablet daily at 8 weeks could have had their dose increased 50 mg daily at the discretion of the investigator. The mean daily dose at study end for the patients randomized to spironolactone was 26 mg.

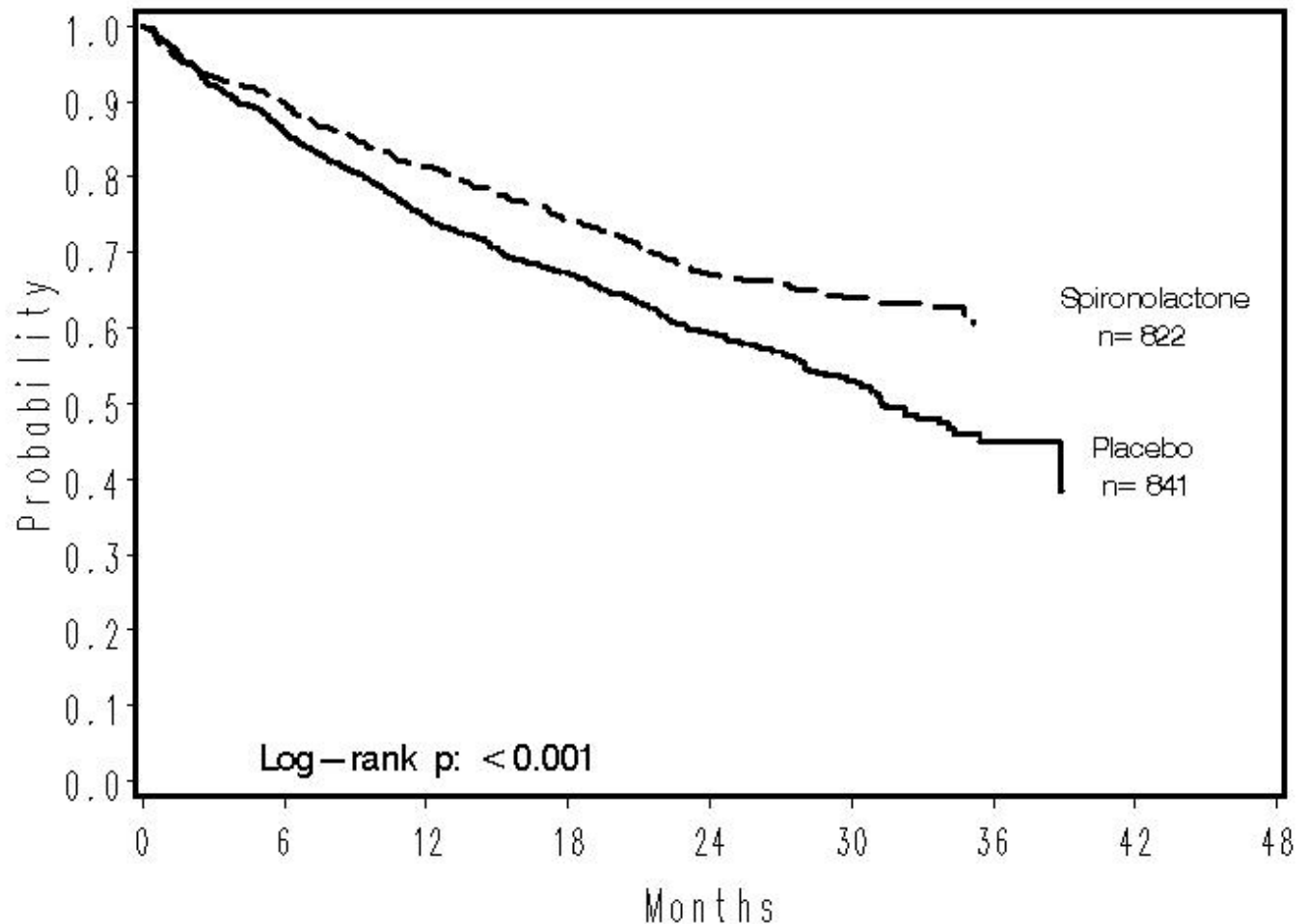
1663 patients were randomized 1:1 to spironolactone or placebo. 87% of patients were white, 7% black, and 2% Asian. 73% were male and median age was 67. The median ejection fraction was 26%. 70% were NYHA class III and 29% class IV. The etiology of heart failure was ischemic in 55%, and non-ischemic in 45%. There was a history of myocardial infarction in 28%, of hypertension in 24%, and of diabetes in 22%. The median baseline serum creatinine was 1.2 mg/dL and the median baseline creatinine clearance was 57 mL/min.

At baseline, 100% of patients were taking loop diuretic and 95% were taking an ACE inhibitor. Other medications used at any time during the study included digoxin (78%), anticoagulants (58%), aspirin (43%), and beta-blockers (15%).

The primary endpoint for RALES was time to all-cause mortality. RALES was terminated early because of significant mortality benefit demonstrated during a planned interim analysis. Compared to placebo, spironolactone reduced the risk of death by 30% ( $p < 0.001$ ; 95% confidence interval 18% to 40%). Spironolactone also reduced the risk of hospitalization for cardiac causes (defined as worsening heart failure, angina, ventricular arrhythmias, or myocardial infarction) by 30% ( $p < 0.001$  95% confidence interval 18% to 41%).

The survival curves by treatment group are shown in Figure 1.

Figure 1. Survival by Treatment Group in RALES



Mortality hazard ratios for subgroups were studied. The favorable effect of spironolactone on mortality appeared similar for both genders and all age groups except patients younger than 55. There were too few non-whites in RALES to evaluate if the effects differ by race. Spironolactone's benefit appeared greater in patients with low baseline serum potassium levels and less in patients with ejection fractions  $< 0.2$ . These subgroup analyses must be interpreted cautiously.

## 14.2 Hypertension

Studies of the treatment of hypertension were conducted with a formulation of spironolactone that is not therapeutically equivalent to CAROSPIR [see *Dosage and Administration (2.1)*, and *Clinical Pharmacology (12.3)*]. In a study in 24 patients with

essential hypertension, of which only eight completed study assessments, the average BP systolic lowering was 10 mmHg and 20 mmHg for the 25 mg and 100 mg doses of spironolactone, respectively. Doses >100 mg/day generally do not provide additional reductions in blood pressure.

## **16 HOW SUPPLIED/STORAGE AND HANDLING**

CAROSPIR (spironolactone) Oral Suspension 25 mg/5 mL is a white to off-white, opaque, banana-flavored suspension. It is available in a 118 mL bottle (NDC 46287-020-04), a 473 mL bottle (NDC 46287-020-01), and a 5 mL unit dose cup (NDC 46287-020-20) available in a 10 count carton (NDC 46287-020-50).

Store at 20° to 25°C (68° to 77°F). Excursions permitted to 15° to 30°C (59° to 86°F) [See USP Controlled Room Temperature]. Shake well before use. Dispense in a tight container as defined in the USP.

## **17 PATIENT COUNSELING INFORMATION**

- Advise patients to take CAROSPIR consistently with respect to food.
- Patients who receive CAROSPIR should avoid potassium supplements and foods containing high levels of potassium, including salt substitutes.
- Pregnancy: Advise a pregnant woman of the potential risk to a fetus. Advise females of reproductive potential to inform their prescriber of a known or suspected pregnancy [see Use in Specific Populations (8.1)].

Manufactured by, Distributed by:  
CMP Pharma, Inc.  
Farmville, NC 27828

Revised: 08/2023

3042 R0823

### **Principal Display Panel 118 mL**

NDC 46287-020-04  
118 mL

**CaroSpir®**

Spironolactone Oral Suspension  
25 mg/5 mL

For Oral Use Only

**Shake well before use**

R<sub>x</sub> Only

**Contains:**

5 mg Spironolactone USP  
per 1 mL

**Usual Dosage:** See package  
insert for prescribing information.

**Store at 20°-25°C (68°-77°F);  
excursions permitted to  
15°-30° (59°-86°F). [See USP  
Controlled Room Temperature].**

Dispense in a tight container,  
as defined in the USP.  
Keep out of reach of children.

NDC 46287-020-04

118 mL

**CaroSpir®**

Spironolactone Oral Suspension,  
25 mg/5 mL

**For Oral Use Only**

**Shake well before use**

**R<sub>x</sub> Only**

GTIN: 00346287020042



LOT 12312345  
EXP 160503  
SN 01234567890123



3 46287 02004 2

**cmp**  
P H A R M A  
Farmville, NC 27828

**Principal Display Panel 473 mL**

NDC 46287-020-01

473 mL

**CaroSpir®**

Spironolactone Oral Suspension  
25 mg/5 mL

**For Oral Use Only**

Contains: 5 mg Spironolactone USP per 1 mL

Usual Dosage: See package insert for complete prescribing information.

Store at 20°-25°C (68°-77°F); excursions permitted to 15°-30°C (59°-86°F). [See USP  
Controlled Room Temperature].

Dispense in a tight container, as defined in the USP. Keep out of reach of children.

**Shake well before use**

**R<sub>x</sub> Only**



NDC 46287-020-01

473 mL

## CaroSpir®

Spironolactone Oral Suspension,  
25 mg/5 mL

For Oral Use Only

**Contains:** 5 mg Spironolactone USP per 1 mL

**Usual Dosage:** See package insert for complete prescribing information.

**Store at 20°-25°C (68°-77°F); excursions permitted to 15°-30°C (59°-86°F). [See USP Controlled Room Temperature].**

Dispense in a tight container, as defined in the USP.

Keep out of reach of children.

**Shake well before use**

Rx Only

GTIN: 00346287020011



P H A R M A

Farmville, NC 27828

### CAROSPIR

carospir suspension

#### Product Information

<b>Product Type</b>	HUMAN PRESCRIPTION DRUG	<b>Item Code (Source)</b>	NDC:46287-020
<b>Route of Administration</b>	ORAL		

#### Active Ingredient/Active Moiety

Ingredient Name	Basis of Strength	Strength
-----------------	-------------------	----------

<b>spironolactone</b> (UNII: 27O7W4T232) (spironolactone - UNII:27O7W4T232)	spironolactone	25 mg in 5 mL
---	----------------	---------------

### Inactive Ingredients

Ingredient Name	Strength
<b>xanthan gum</b> (UNII: TTV12P4NEE)	
<b>dimethicone</b> (UNII: 92RU3N3Y1O)	
<b>sorbic acid</b> (UNII: X045WJ989B)	
<b>potassium sorbate</b> (UNII: 1VPU26JZZ4)	
<b>saccharin sodium</b> (UNII: SB8ZUX40TY)	
<b>anhydrous citric acid</b> (UNII: XF417D3PSL)	
<b>trisodium citrate dihydrate</b> (UNII: B22547B95K)	
<b>ammonium glycyrrhizate</b> (UNII: 3VRD35U26C)	
<b>glycerin</b> (UNII: PDC6A3C0OX)	
<b>water</b> (UNII: 059QF0KO0R)	

### Product Characteristics

<b>Color</b>	white	<b>Score</b>	
<b>Shape</b>		<b>Size</b>	
<b>Flavor</b>	BANANA	<b>Imprint Code</b>	
<b>Contains</b>			

### Packaging

#	Item Code	Package Description	Marketing Start Date	Marketing End Date
1	NDC:46287-020-50	10 in 1 CARTON	07/15/2021	
1		5 mL in 1 CUP, UNIT-DOSE; Type 0: Not a Combination Product		
2	NDC:46287-020-04	118 mL in 1 BOTTLE; Type 0: Not a Combination Product	08/04/2017	
3	NDC:46287-020-01	473 mL in 1 BOTTLE; Type 0: Not a Combination Product	08/04/2017	

### Marketing Information

Marketing Category	Application Number or Monograph Citation	Marketing Start Date	Marketing End Date
NDA	NDA209478	08/04/2017	

**Labeler** - CMP Pharma, Inc. (005224175)