

**XIPERE- triamcinolone acetonide injection, suspension**  
**Clearside Biomedical, Inc.**

-----

**HIGHLIGHTS OF PRESCRIBING INFORMATION**

These highlights do not include all the information needed to use XIPERE™ safely and effectively. See full prescribing information for XIPERE™.

**XIPERE™ (triamcinolone acetonide injectable suspension), for suprachoroidal use**  
**Initial U.S. Approval: 1957**

-----  
**INDICATIONS AND USAGE**-----

XIPERE™ is a corticosteroid indicated for the treatment of macular edema associated with uveitis. (1)

-----  
**DOSAGE AND ADMINISTRATION**-----

The recommended dosage is 4 mg (0.1 mL) administered as a suprachoroidal injection. (2.1)

-----  
**DOSAGE FORMS AND STRENGTHS**-----

Injectable suspension: triamcinolone acetonide 40 mg/mL in a single-dose vial. (3)

-----  
**CONTRAINDICATIONS**-----

- Ocular or periocular infections (4.1)
- Hypersensitivity to triamcinolone or any component of this product (4.2)

-----  
**WARNINGS AND PRECAUTIONS**-----

Potential Corticosteroid-Related Effects: Use of corticosteroids may produce cataracts, increased intraocular pressure, and glaucoma. (5.1)

-----  
**ADVERSE REACTIONS**-----

In controlled studies, the most common adverse reactions reported by ≥ 10% of patients and at a rate greater than control included elevated intraocular pressure and eye pain. (6.1)

**To report SUSPECTED ADVERSE REACTIONS, contact Clearside Biomedical, Inc. at 1-866-494-7373 (1-866-4XIPERE) or FDA at 1-800-FDA-1088 or [www.fda.gov/medwatch](http://www.fda.gov/medwatch).**

**See 17 for PATIENT COUNSELING INFORMATION.**

**Revised: 10/2021**

---

**FULL PRESCRIBING INFORMATION: CONTENTS\***

**1 INDICATIONS AND USAGE**

**2 DOSAGE AND ADMINISTRATION**

- 2.1 Dosing Information
- 2.2 Preparation for Administration
- 2.3 Administration

**3 DOSAGE FORMS AND STRENGTHS**

**4 CONTRAINDICATIONS**

- 4.1 Ocular or Periocular Infections
- 4.2 Hypersensitivity

**5 WARNINGS AND PRECAUTIONS**

- 5.1 Potential Corticosteroid-Related Effects
- 5.2 Alterations in Endocrine Function

**6 ADVERSE REACTIONS**

- 6.1 Clinical Trials Experience

**8 USE IN SPECIFIC POPULATIONS**

- 8.1 Pregnancy
- 8.2 Lactation
- 8.4 Pediatric Use

8.5 Geriatric Use

## 11 DESCRIPTION

## 12 CLINICAL PHARMACOLOGY

12.1 Mechanism of Action

12.3 Pharmacokinetics

## 13 NONCLINICAL TOXICOLOGY

13.1 Carcinogenesis, Mutagenesis, Impairment of Fertility

## 14 CLINICAL STUDIES

## 16 HOW SUPPLIED/STORAGE AND HANDLING

## 17 PATIENT COUNSELING INFORMATION

\* Sections or subsections omitted from the full prescribing information are not listed.

---

## FULL PRESCRIBING INFORMATION

### 1 INDICATIONS AND USAGE

XIPERE™ (triamcinolone acetonide injectable suspension) 40 mg/mL is indicated for the treatment of macular edema associated with uveitis.

### 2 DOSAGE AND ADMINISTRATION

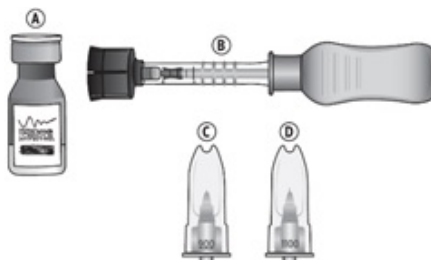
#### 2.1 Dosing Information

For suprachoroidal injection using the SCS Microinjector®. The recommended dose of XIPERE™ is 4 mg (0.1 mL of the 40 mg/mL injectable suspension).

#### 2.2 Preparation for Administration

Suprachoroidal injection is performed under aseptic conditions. The components for administration include:

- A. One single-dose glass vial of triamcinolone acetonide injectable suspension 40 mg/mL
- B. One SCS Microinjector® syringe with vial adapter attached
- C. One 30-G x 900-µm needle
- D. One 30-G x 1100-µm needle



---

### Step 1



Figure A

Remove the tray from the carton (see Figure A).

The tray consists of two compartments:

- An open non-sterile compartment that holds the vial
- A sealed compartment that contains a sterile tray

---

### Step 2



Figure B

Examine the tray for damage (see Figure B). Ensure that the sealed compartment cover is intact and that there is no evidence of damage. If damage is present, do not use.

---

### Step 3



Figure C

Remove the vial from the tray (see Figure C). Examine the vial and ensure there is no evidence of damage. Set aside for use in step 6.

---

### Step 4



Figure D

Peel off the compartment cover, exposing the sterile tray (see Figure D).

---

### Step 5

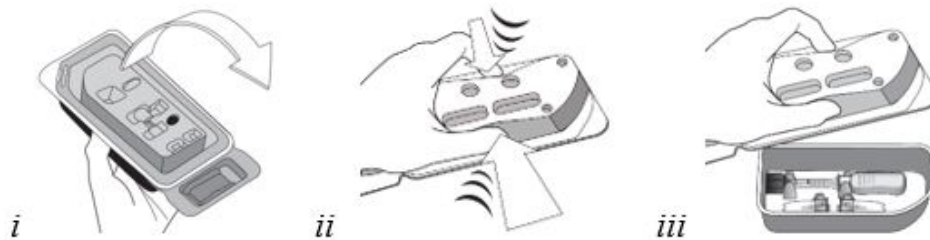


Figure E

Grasp and hold the long sides of the tray and invert the tray. Squeeze gently to release the sterile tray onto the appropriate sterile preparation surface (see Figure E, *i - iii*).

---

### Step 6

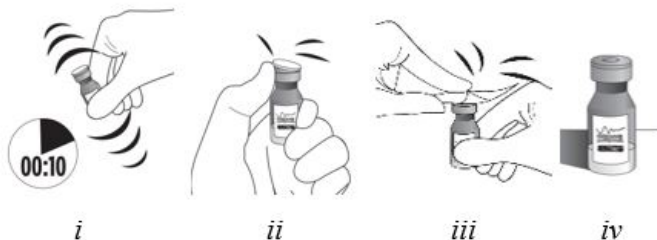


Figure F

Vigorously shake the vial for 10 seconds. Inspect the vial for clumping or granular appearance of the sterile contents. If clumping or granular appearance is present, do not use. Remove the protective plastic cap from the vial and clean the top of the vial with an alcohol wipe. Place the vial on a flat surface (see Figure F, *i - iv*). To avoid settling of the suspension, continue to the next steps without delay.

---

### Step 7



Figure G

Remove the syringe with attached vial adapter from the tray (see Figure G). Ensure the vial adapter is secured to the syringe by tightening the connection.

---

### Step 8



Figure H

Holding the clear barrel of the syringe, connect the vial adapter to the vial by firmly pushing the spike of the vial adapter straight through the center of the vial septum until it snaps securely into place (see Figure H).

NOTE: Do not introduce additional air into the syringe prior to connecting the vial adapter to the vial.

---

### Step 9

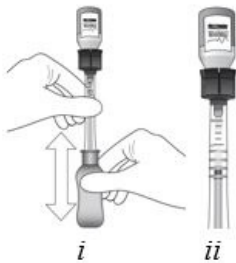


Figure I

Invert the entire assembly so that the vial is directly above the syringe. Slide the white plunger handle all the way back and forth multiple times to fill the entire syringe with drug and remove any remaining air (see Figure I, *i* and *ii*).

NOTE: The syringe should be handled by the clear barrel during filling, connecting and disconnecting procedures. The white plunger handle has a stop to prevent complete removal of the plunger from the syringe.

---

### Step 10



Figure J

While holding the vial adapter and vial, disconnect the syringe by twisting it off of the adapter (see Figure J).

Retain the vial, with the vial adapter connected, in the event re-access is necessary.

---

### Step 11



Figure K

Connect the 900-µm needle to the syringe by twisting onto the syringe (see Figure K). At the discretion of the physician, the longer needle may be used. Ensure a secure connection.

---

### Step 12



Figure L

Hold the syringe barrel with the needle pointing up. Expel air bubbles and excess drug by slowly sliding the white plunger handle so that the plunger tip aligns with the line that marks 0.1 mL on the syringe (see Figure L).

NOTE: Perform the suprachoroidal injection without delay to prevent settling of the drug.

---

## 2.3 Administration

The suprachoroidal injection procedure should be carried out under controlled aseptic conditions, which include the use of sterile gloves, a sterile drape, a sterile eyelid speculum (or equivalent), and a sterile cotton swab. Adequate anesthesia and a broad-spectrum microbicide applied to the periorcular skin, eyelid, and ocular surface are recommended to be given prior to the suprachoroidal injection.

---

### Step 13



Figure M

Identify the injection site by measuring 4 - 4.5 mm posterior to the limbus using the tip of the needle cap or ophthalmic calipers (see Figure M).

---

### Step 14

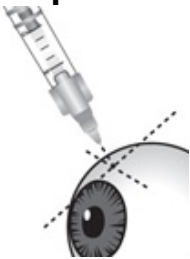


Figure N

Carefully pull off the needle cap to expose the needle. Holding the syringe perpendicular to the ocular surface, insert the needle through the conjunctiva into the sclera (see Figure N).

---

### Step 15



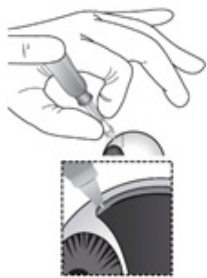
Figure O

Once the needle is inserted into the sclera, ensure that the hub of the needle is in firm contact with the conjunctiva, compressing the sclera and creating a dimple on the ocular surface using a light amount of force against the eye. Maintain the dimple and perpendicular positioning throughout the injection procedure (see Figure O).

---

### Step 16

While maintaining the dimple on the ocular surface, gently press the



white plunger handle so that the plunger moves forward and drug is slowly injected over 5 - 10 seconds. Movement of the plunger will be felt as a loss of resistance and indicates that the needle is in the correct anatomical location for suprachoroidal injection (see Figure P).

If resistance is felt and the plunger does not advance, confirm the hub is in firm contact with the conjunctiva creating a dimple and that the syringe is positioned perpendicular to the ocular surface. Small adjustments in positioning may be necessary.

Figure P

---

### Step 17

Maintain the hub against the eye for 3 - 5 seconds after the drug product has been injected.

---

### Step 18

Remove the needle slowly from the eye while holding a sterile cotton swab next to the needle as it is withdrawn. Immediately cover the injection site with a sterile cotton swab.

---

### Step 19

Hold the swab over the injection site with light pressure for a few seconds and then remove.

---

If continued resistance is experienced during injection attempts:

- Remove the needle from the eye and examine the eye for any issues. If patient safety is not at risk, the physician may use medical judgment to restart the injection procedure at a new site adjacent to the original injection site.
- If resistance continues and patient safety is not at risk, the physician may use appropriate medical judgment to change to the additional included needle in the sterile tray. Twist to remove the needle and reconnect the syringe to the vial by twisting the syringe onto the vial adapter. Repeat the preparation and injection process as stated in steps 9 - 18 with the additional needle (allowing for any partial dose given with the first needle when completing preparation Step 12).

Immediately following suprachoroidal injection, patients should be monitored for elevation of intraocular pressure. Appropriate monitoring may consist of a check for perfusion of the optic nerve head or tonometry.

Following suprachoroidal injection, patients should be instructed to report any symptoms suggestive of endophthalmitis or retinal detachment (e.g., eye pain, redness of eye, photophobia, blurring of vision) without delay [see *Patient Counseling Information (17)*].

Each XIPERE™ package (microinjector syringe with vial adapter, 900- $\mu$ m needle, 1100- $\mu$ m needle, and vial of triamcinolone acetonide injectable suspension 40 mg/mL) is single-dose and should only be used for the treatment of one eye.

After suprachoroidal injection, all drug product and components (used or unused) must be discarded appropriately.

### **3 DOSAGE FORMS AND STRENGTHS**

Injectable suspension: triamcinolone acetonide 40 mg/mL suspension in a single-dose glass vial for use with the supplied SCS Microinjector<sup>®</sup>.

### **4 CONTRAINDICATIONS**

#### **4.1 Ocular or Periocular Infections**

XIPERE<sup>™</sup> is contraindicated in patients with active or suspected ocular or periocular infections including most viral diseases of the cornea and conjunctiva, including active epithelial herpes simplex keratitis (dendritic keratitis), vaccinia, varicella, mycobacterial infections, and fungal diseases.

#### **4.2 Hypersensitivity**

XIPERE<sup>™</sup> is contraindicated in patients with known hypersensitivity to triamcinolone acetonide or any other components of this product.

### **5 WARNINGS AND PRECAUTIONS**

#### **5.1 Potential Corticosteroid-Related Effects**

Use of corticosteroids may produce cataracts, increased intraocular pressure, and glaucoma. Use of corticosteroids may enhance the establishment of secondary ocular infections due to bacteria, fungi, or viruses.

Corticosteroids should be used cautiously in patients with a history of ocular herpes simplex. Corticosteroids should not be used in patients with active ocular herpes simplex.

#### **5.2 Alterations in Endocrine Function**

Hypothalamic-pituitary-adrenal (HPA) axis suppression, Cushing's syndrome, and hyperglycemia can occur following administration of a corticosteroid. Monitor patients for these conditions with chronic use.

Corticosteroids can produce reversible HPA axis suppression with the potential for glucocorticosteroid insufficiency after withdrawal of treatment. Drug induced secondary adrenocortical insufficiency may be minimized by gradual reduction of dosage. This type of relative insufficiency may persist for months after discontinuation of therapy; therefore, in any situation of stress occurring during that period, hormone therapy should be reinstated. Metabolic clearance of corticosteroids is decreased in hypothyroid patients and increased in hyperthyroid patients. Changes in thyroid status of the patient may necessitate adjustment in dosage.

### **6 ADVERSE REACTIONS**

#### **6.1 Clinical Trials Experience**

Because clinical trials are conducted under widely varying conditions, adverse reaction rates observed in the clinical trials of a drug cannot be directly compared to rates in the clinical trials of another drug and may not reflect the rates observed in practice.

XIPERE<sup>™</sup> was studied in a multicenter, randomized, sham-controlled, double-masked study in patients with macular edema associated with uveitis. Table 1 summarizes data available from the clinical trial for XIPERE<sup>™</sup> treated patients and control patients.

The most common ocular (study eye) adverse reactions occurring in  $\geq 2\%$  of patients and non-ocular adverse reactions occurring in  $\geq 5\%$  of patients are shown in Table 1.

**Table 1: Ocular Adverse Reactions Reported in  $\geq 2\%$  of Patients and Non-ocular Adverse Reactions Reported by  $\geq 5\%$  of Patients**

Adverse Reaction	XIPERE™ (N = 96) n (%)	Control (N = 64) n (%)
<b>Ocular</b>		
Increased intraocular pressure, non-acute <sup>a, b</sup>	13 (14%)	9 (14%)
Eye pain, non-acute <sup>b</sup>	11 (12%)	0
Cataract <sup>c</sup>	7 (7%)	4 (6%)
Increased intraocular pressure, acute <sup>a, d</sup>	6 (6%)	0
Vitreous detachment	5 (5%)	1 (2%)
Injection site pain	4 (4%)	2 (3%)
Conjunctival haemorrhage	4 (4%)	2 (3%)
Visual acuity reduced	4 (4%)	1 (2%)
Dry eye	3 (3%)	1 (2%)
Eye pain, acute <sup>d</sup>	3 (3%)	0
Photophobia	3 (3%)	0
Vitreous floaters	3 (3%)	0
Uveitis	2 (2%)	7 (11%)
Conjunctival hyperaemia	2 (2%)	2 (3%)
Punctate keratitis	2 (2%)	1 (2%)
Conjunctival oedema	2 (2%)	0
Meibomianitis	2 (2%)	0
Anterior capsule contraction	2 (2%)	0
Chalazion	2 (2%)	0
Eye irritation	2 (2%)	0
Eye pruritus	2 (2%)	0
Eyelid ptosis	2 (2%)	0
Photopsia	2 (2%)	0
Vision blurred	2 (2%)	0
<b>Non-ocular</b>		
Headache	5 (5%)	2 (3%)

<sup>a</sup> Includes intraocular pressure increased and ocular hypertension

<sup>b</sup> Defined as not occurring on the day of the injection procedure, or occurring on the day of the injection procedure and not resolving the same day

<sup>c</sup> Includes cataract, cataract cortical, and cataract subcapsular

<sup>d</sup> Defined as occurring on the day of the injection procedure and resolving the same day

## 8 USE IN SPECIFIC POPULATIONS

### 8.1 Pregnancy

#### Risk Summary

There are no adequate and well-controlled studies with XIPERE™ in pregnant women to inform drug-associated risks. In animal reproductive studies from the published literature, topical ocular administration of corticosteroids has been shown to produce



teratogenicity at clinically relevant doses. There is negligible systemic XIPERE™ exposure following suprachoroidal injection [see *Clinical Pharmacology (12.3)*]. Corticosteroids should be used during pregnancy only if the potential benefit justifies the potential risk to the fetus.

All pregnancies have a background risk of birth defect, loss, or other adverse outcomes. In the U.S. general population, the estimated risk of major birth defects and miscarriage in clinically recognized pregnancies is 2% to 4% and 15% to 20%, respectively.

### Animal Data

Animal reproduction studies using XIPERE™ have not been conducted. In animal reproductive studies from the published literature, topical ocular administration of corticosteroids to pregnant mice and rabbits during organogenesis has been shown to produce cleft palate, embryofetal death, herniated abdominal viscera, hypoplastic kidneys and craniofacial malformations.

## **8.2 Lactation**

### Risk Summary

It is not known whether ocular administration of corticosteroids could result in sufficient systemic absorption to produce detectable quantities in human milk. Systemically administered corticosteroids appear in human milk and could suppress growth, interfere with endogenous corticosteroid production, or cause other untoward effects. The developmental and health benefits of breastfeeding should be considered along with the mother's clinical need for XIPERE™ and any potential adverse effects on the breastfed infant from XIPERE™. There are no data on the effects of XIPERE™ on milk production.

## **8.4 Pediatric Use**

Safety and effectiveness of XIPERE™ in pediatric patients have not been established.

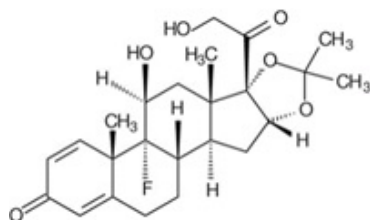
## **8.5 Geriatric Use**

No overall differences in safety or effectiveness have been observed between elderly and younger patients following XIPERE™ administration.

## **11 DESCRIPTION**

XIPERE™ is a sterile, preservative-free, injectable suspension of triamcinolone acetonide, a synthetic corticosteroid for use with the SCS Microinjector®. Each mL of the sterile, aqueous suspension contains 40 mg of triamcinolone acetonide with 0.55% (weight/volume [w/v]) sodium chloride for tonicity, 0.5% (w/v) carboxymethylcellulose sodium, and 0.02% (w/v) polysorbate 80. It also contains potassium chloride, calcium chloride (dihydrate), magnesium chloride (hexahydrate), sodium acetate (trihydrate), sodium citrate (dihydrate), and water for injection. Hydrochloric acid may be used to adjust pH to a target value of 6.5.

The chemical name for triamcinolone acetonide is 9-fluoro-11 $\beta$ ,16 $\alpha$ ,17,21-tetrahydroxypregna-1,4-diene-3,20-dione cyclic 16,17-acetal with acetone. Its chemical structure is:



Molecular weight 434.50; molecular formula C<sub>24</sub>H<sub>31</sub>FO<sub>6</sub>

Triamcinolone acetonide occurs as a white to cream-colored, crystalline powder having not more than a slight odor and is practically insoluble in water and very soluble in alcohol.

XIPERE™ is provided as an injectable suspension in a single-dose glass vial with a rubber stopper and an aluminum seal. The SCS Microinjector® is a piston syringe and a needle approximately 1 mm in length (900-µm and 1100-µm needles are included) for conducting the suprachoroidal injection.

## **12 CLINICAL PHARMACOLOGY**

### **12.1 Mechanism of Action**

Triamcinolone acetonide is a synthetic glucocorticoid (glucocorticoids are often referred to as corticosteroids) with immunosuppressive and anti-inflammatory activity. The primary mechanism of action for triamcinolone acetonide is as a corticosteroid hormone receptor agonist.

### **12.3 Pharmacokinetics**

In animal studies, data demonstrated that suprachoroidal injections resulted in larger amounts in total of triamcinolone acetonide found in the sclera, choroid, retinal pigment epithelial and retina, than with intravitreal injections of triamcinolone acetonide. Lower amounts of triamcinolone acetonide were found in the anterior segment and lens as compared to intravitreal injections of triamcinolone acetonide.

Plasma triamcinolone acetonide concentrations were evaluated in 19 patients with dosing of 4 mg XIPERE™ at Day 0 and Week 12. Plasma triamcinolone acetonide concentrations in all 19 patients were below 100 pg/mL at Week 4, 12, and 24 (concentrations ranged from < 10 pg/mL [LLOQ (lower limit of quantitation) of the assay] to 88.9 pg/mL), with the exception of one patient with a value of 243.4 pg/mL prior to the second dose at Week 12.

## **13 NONCLINICAL TOXICOLOGY**

### **13.1 Carcinogenesis, Mutagenesis, Impairment of Fertility**

#### Carcinogenesis

No information is available on the carcinogenic potential of triamcinolone acetonide.

#### Mutagenesis

No information is available on the mutagenic potential of triamcinolone acetonide.

#### Fertility

No information is available on the effect of triamcinolone acetonide on fertility.

## **14 CLINICAL STUDIES**

The efficacy of XIPERE™ was assessed in a 6-month, randomized, multicenter, double-masked, sham-controlled study in patients with macular edema associated with anterior-, intermediate-, posterior-, or pan-uveitis. Patients were treated at baseline and week 12.

The primary efficacy endpoint was the proportion of patients in whom best corrected visual acuity (BCVA) had improved by ≥ 15 letters from baseline after 24 weeks of follow-up (Table 2).

**Table 2: Number of Patients with  $\geq 15$  Letters Improvement from Baseline at Week 24**

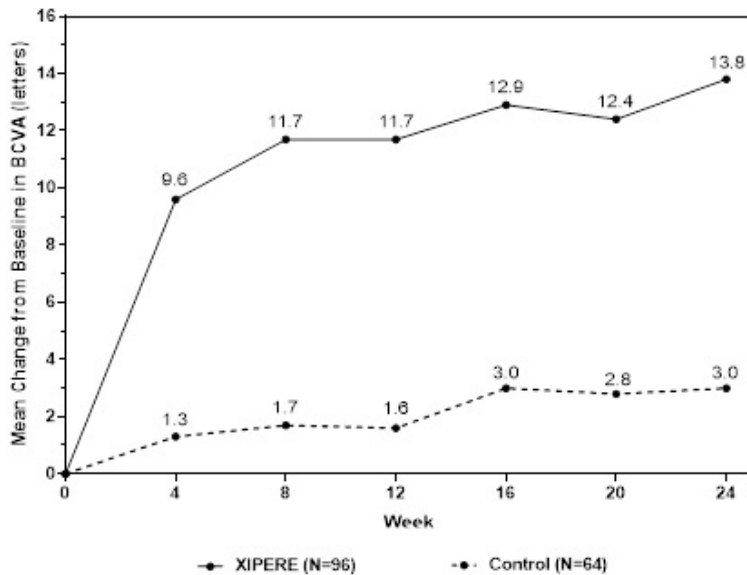
Patients Who Gained $\geq 15$ Letters from Baseline at Week 24	XIPERE™ (N = 96)	Control (N = 64)
n (%)	45 (47%)	10 (16%)
Estimated Difference (95% CI)	31% (15%, 46%)	
CMH p-value*	< 0.01	

\* The p-value was based on a Cochran Mantel Haenszel test for general association between treatment and response with stratification by country.

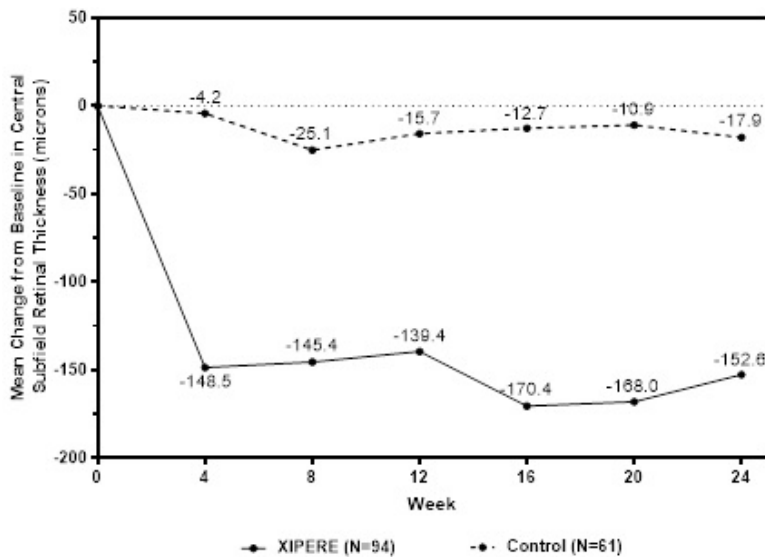
A statistically significantly greater proportion of patients treated with XIPERE™ achieved a  $\geq 15$ -letter improvement in BCVA than control patients ( $p < 0.01$ ) at Week 24.

BCVA mean change from baseline at different visits is shown in Figure 1. Central subfield retinal thickness (CST) mean change from baseline at different visits is shown in Figure 2.

**Figure 1: Mean Change from Baseline in BCVA**



**Figure 2: Mean Change from Baseline in CST**



## 16 HOW SUPPLIED/STORAGE AND HANDLING

XIPERE™ is supplied with the following sterile components for administration, sealed in a Tyvek covered tray, and one single-dose glass vial, in a carton with a package insert (NDC 71565-040-01):

- One SCS Microinjector® syringe with vial adapter attached
- One 30-G x 900-µm needle
- One 30-G x 1100-µm needle
- One single-dose vial of triamcinolone acetonide injectable suspension 40 mg/mL (NDC 71565-040-25)

**Storage:** Store at 15°C to 25°C (59°F to 77°F); do not freeze. The drug vial should be protected from light by storing in the carton. Discard unused portion.

## 17 PATIENT COUNSELING INFORMATION

### Corticosteroid-Related Effects

Advise patients that they may develop elevated intraocular pressure following treatment, which may need to be managed with medication or surgery.

### When to Seek Physician Advice

Advise patients that if the eye becomes red, sensitive to light, painful, or develops a change in vision, they should seek immediate care from an ophthalmologist.

Manufactured for:

Clearside Biomedical, Inc.  
900 North Point Parkway, Suite 200  
Alpharetta, GA 30005

[www.clearsidebio.com/patents](http://www.clearsidebio.com/patents)

## PRINCIPAL DISPLAY PANEL - NDC: 71565-040-25 - Vial Label

NDC 71565-040-25

**XIPERE™**

(triamcinolone acetonide  
injectable suspension) 40 mg/mL

Single-Dose

Sterile  
0.9 mL

For suprachoroidal use

**R<sub>x</sub> Only**

Manufactured for Clearside Biomedical, Inc.

XIP-V-01-B

Lot: \_\_\_\_\_

Exp: \_\_\_\_\_

**PRINCIPAL DISPLAY PANEL - NDC: 71565-040-01 - Lid Label**

**XIPERE™**  
(triamcinolone acetonide  
injectable suspension) 40 mg/mL

**Rx Only**

For suprachoroidal use

Each sealed tray contains the following sterile components:

- One SCS Microinjector® syringe with vial adapter attached
- One 30-G x 900-µm needle
- One 30-G x 1100-µm needle

**LOT**

**PEEL HERE**

Manufactured for  
Clearside Biomedical, Inc.

<http://clearsidebio.com/patents>  
XIP-T-01-B

**PRINCIPAL DISPLAY PANEL - NDC: 71565-040-01 - Carton Label**



<b>XIPERE</b>			
triamcinolone acetonide injection, suspension			
<b>Product Information</b>			
<b>Product Type</b>	HUMAN PRESCRIPTION DRUG	<b>Item Code (Source)</b>	NDC:71565-040
<b>Route of Administration</b>	OPHTHALMIC		
<b>Active Ingredient/Active Moiety</b>			
<b>Ingredient Name</b>		<b>Basis of Strength</b>	<b>Strength</b>
TRIAMCINOLONE ACETONIDE (UNII: F446C597KA) (TRIAMCINOLONE ACETONIDE - UNII:F446C597KA)		TRIAMCINOLONE ACETONIDE	40 mg in 1 mL
<b>Inactive Ingredients</b>			
<b>Ingredient Name</b>			<b>Strength</b>
CARBOXYMETHYLCELLULOSE SODIUM, UNSPECIFIED FORM (UNII: K679OBS311)			

<b>POLYSORBATE 80</b> (UNII: 6OZP39ZG8H)	
<b>SODIUM CHLORIDE</b> (UNII: 451W47IQ8X)	
<b>POTASSIUM CHLORIDE</b> (UNII: 660YQ98I10)	
<b>CALCIUM CHLORIDE</b> (UNII: M4I0D6VV5M)	
<b>MAGNESIUM CHLORIDE</b> (UNII: 02F3473H9O)	
<b>SODIUM ACETATE</b> (UNII: 4550K0SC9B)	
<b>TRISODIUM CITRATE DIHYDRATE</b> (UNII: B22547B95K)	
<b>HYDROCHLORIC ACID</b> (UNII: QTT17582CB)	
<b>WATER</b> (UNII: 059QF0KO0R)	

### Product Characteristics

<b>Color</b>	WHITE (clear until shaken then appears white)	<b>Score</b>	
<b>Shape</b>		<b>Size</b>	
<b>Flavor</b>		<b>Imprint Code</b>	
<b>Contains</b>			

### Packaging

#	Item Code	Package Description	Marketing Start Date	Marketing End Date
1	NDC:71565-040-01	1 in 1 CARTON	11/12/2021	
1		1 in 1 TRAY		
1	NDC:71565-040-25	0.9 mL in 1 VIAL; Type 1: Convenience Kit of Co-Package		
2	NDC:71565-040-99	1 in 1 CARTON	11/12/2021	
2		1 in 1 TRAY		
2	NDC:71565-040-95	0.9 mL in 1 VIAL; Type 1: Convenience Kit of Co-Package		

### Marketing Information

Marketing Category	Application Number or Monograph Citation	Marketing Start Date	Marketing End Date
NDA	NDA211950	11/12/2021	

**Labeler** - Clearside Biomedical, Inc. (029778767)

Revised: 12/2021

Clearside Biomedical, Inc.