

GOODSENSE CHERRY COUGH DROPS- menthol lozenge
Geiss, Destin, Dunn

Menthol 5.8 mg

Active ingredient (in each drop)

Menthol 5.8 mg

Purpose

Cough suppressant / Oral anesthetic

Uses temporarily relieves:

- cough as may occur with a cold
- occasional minor irritation and sore throat

Warnings

Sore throat warning: if sore throat is severe, persists for more than 2 days, in accompanied or followed by fever, headache, rash, swelling, nausea, or vomiting, consult a doctor promptly. Of sore mouth symptoms do not improve in 7 days, see your dentist or doctor promptly. These symptoms may be serious.

Ask a doctor before use if you have:

- persistent or chronic cough such as occurs with smoking, asthma, or emphysema
- cough accompanied by excessive phlegm (mucus)

Stop use and ask doctor if

- cough persists for more than 7 days, tends to recur, or is accompanied by fever, rash, or persistent headache. These could be signs of a serious condition.
- sore throat is severe, or irritation, pain or redness lasts or worsens
- sore mouth does not improve in 7 days

If pregnant or breast-feeding, ask a health professional before use.

Keep out of reach of children

Directions

adults and children 5 years and over - dissolve 1 lozenge slowly in mouth. Repeat every 2 hours as needed or as directed by a doctor.

children under 5 years - ask a doctor

Other information

- 10 calories per drop
- do not use if bag is torn or open

Inactive ingredients: Corn starch, corn syrup, eucalyptus oil, FD&C red no. 40, glycerin, medium chain triglycerides, natural and artificial flavors, soybean oil, sucrose and water.

Questions? Or to report an adverse event call **1-800-245-2898**. Monday through Friday, 9AM to 4PM EST

GOODSENSE®

Soothing

Cough Drops

80 DROPS

Menthol Cough Suppressant/Oral anesthetic



CHERRY FLAVOR

- **Soothes Sore Throat Pain**
- **Temporarily Relieves Cough**

***Compare to active ingredient of Halls®**

Expiration Date
Lot Code

*This product is not manufactured or distributed by the registered trademark Halls® or by any of its affiliates.



Made in USA of U.S. and imported ingredients.

Distributed by:
Perrigo Direct, Inc.
Peachtree City, GA 30269
www.PerrigoDirect.com
GoodSense® is a registered
trademark of L. Perrigo Company.

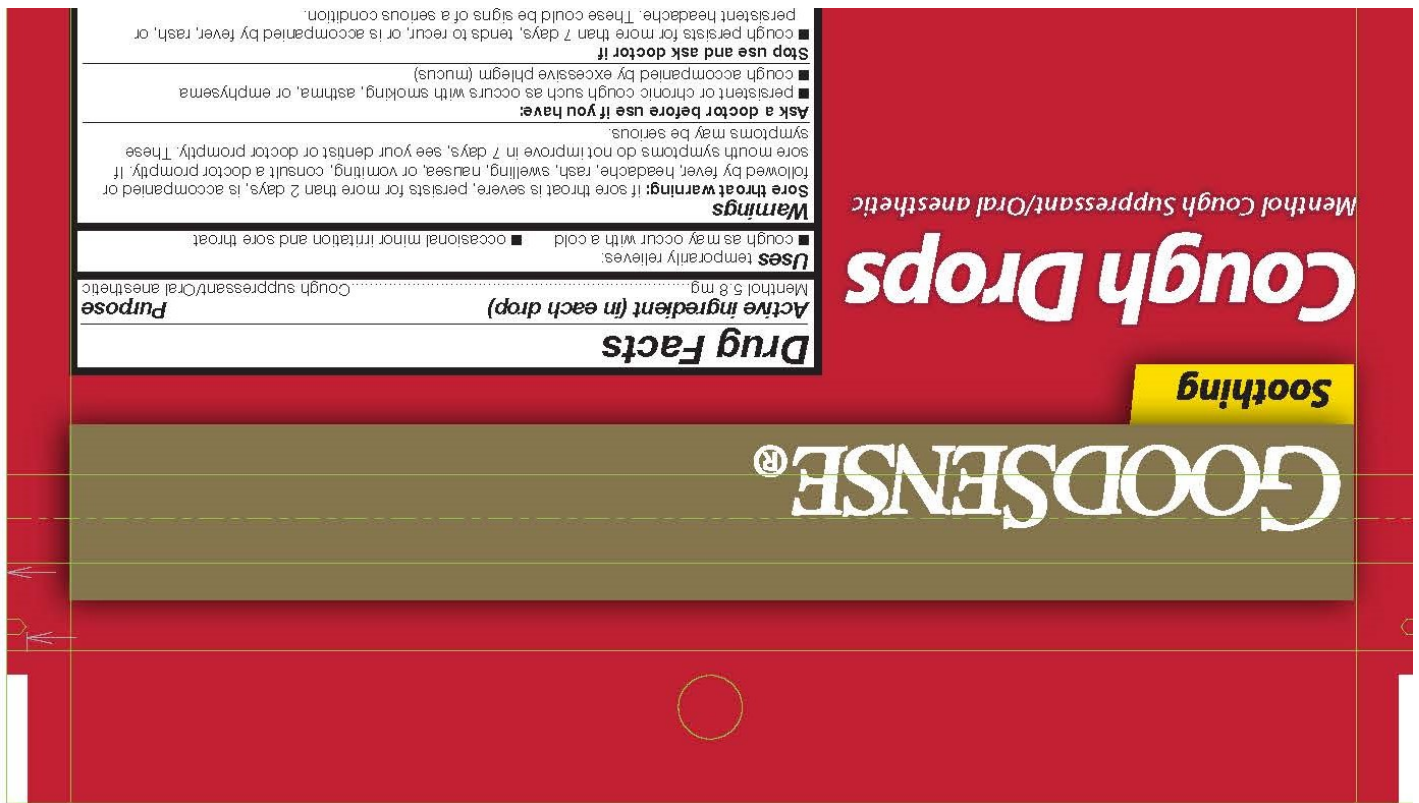
■ sore throat is severe, or irritation, pain or redness lasts or worsens
 ■ sore mouth does not improve in 7 days
 ■ If pregnant or breast-feeding, ask a health professional before use.
 Keep out of reach of children.

Directions
 adults and children
 5 years and over
 dissolve 1 lozenge slowly in mouth. Repeat every 2 hours as needed or as directed by a doctor.
 children under 5 years
 ask a doctor

Other information ■ 10 calories per drop ■ do not use if bag is torn or open

Inactive ingredients Corn starch, corn syrup, eucalyptus oil, FD&C red no. 40, glycerin, medium chain triglycerides, natural & artificial flavors, soybean oil, sucrose and water.

Questions? Or to report an adverse event call 1-800-245-2898.
 Monday through Friday, 9AM to 4PM EST.



GOODSENSE CHERRY COUGH DROPS

menthol lozenge

Product Information

Product Type	HUMAN OTC DRUG	Item Code (Source)	NDC:50804-022
Route of Administration	ORAL		

Active Ingredient/Active Moiety

Ingredient Name	Basis of Strength	Strength
MENTHOL (UNII: L7T10EIP3A) (MENTHOL - UNII:L7T10EIP3A)	MENTHOL	5.8 mg

Inactive Ingredients

Ingredient Name	Strength
WATER (UNII: 059QF0KO0R)	

Product Characteristics

Color	red	Score	no score
Shape	OVAL	Size	17mm
Flavor	CHERRY	Imprint Code	B
Contains			

Packaging

#	Item Code	Package Description	Marketing Start Date	Marketing End Date
1	NDC:50804-022-80	80 in 1 BAG; Type 0: Not a Combination Product	07/15/2021	



Marketing Information

Marketing Category	Application Number or Monograph Citation	Marketing Start Date	Marketing End Date
OTC Monograph Drug	M012	07/15/2021	

Labeler - Geiss, Destin, Dunn (076059836)

Registrant - Bestco LLC (002149136)

Establishment

Name	Address	ID/FEI	Business Operations
Bestco LLC		002149136	manufacture(50804-022)

Revised: 11/2024

Geiss, Destin, Dunn