

# LUMAKRAS- sotorasib tablet, coated

## Amgen Inc

### HIGHLIGHTS OF PRESCRIBING INFORMATION

These highlights do not include all the information needed to use LUMAKRAS safely and effectively. See full prescribing information for LUMAKRAS.

**LUMAKRAS® (sotorasib) tablets, for oral use**  
**Initial U.S. Approval: 2021**

### RECENT MAJOR CHANGES

Indications and Usage (1)	01/2025
Dosage and Administration (2.1,2.2, 2.3)	01/2025
Warnings and Precaution (5.1, 5.2)	01/2025

### INDICATIONS AND USAGE

LUMAKRAS is an inhibitor of the RAS GTPase family indicated for:

#### KRAS G12C-mutated Locally Advanced or Metastatic Non-Small Cell Lung Cancer (NSCLC)

- As a single agent, for the treatment of adult patients with *KRAS* G12C-mutated locally advanced or metastatic NSCLC, as determined by an FDA-approved test, who have received at least one prior systemic therapy. (1.1)

This indication is approved under accelerated approval based on overall response rate (ORR) and duration of response (DOR). Continued approval for this indication may be contingent upon verification and description of clinical benefit in a confirmatory trial(s). (1.1)

#### KRAS G12C-mutated Metastatic Colorectal Cancer (mCRC)

In combination with panitumumab, for the treatment of adult patients with *KRAS* G12C-mutated mCRC as determined by an FDA approved-test, who have received prior fluoropyrimidine-, oxaliplatin- and irinotecan-based chemotherapy. (1.2)

### DOSAGE AND ADMINISTRATION

Recommended dosage as a single agent for NSCLC and in combination with panitumumab for mCRC:

- 960 mg orally once daily. (2.2)
- Swallow tablets whole with or without food. (2.2)

### DOSAGE FORMS AND STRENGTHS

Tablets: 320 mg, 240 mg, 120 mg. (3)

### CONTRAINDICATIONS

None. (4)

### WARNINGS AND PRECAUTIONS

- Hepatotoxicity:** Monitor liver function tests every 3 weeks for the first 3 months of treatment then once monthly as clinically indicated. Consider administering systemic corticosteroids and withhold, reduce the dose, or permanently discontinue LUMAKRAS based on the severity. (2.3, 5.1)
- Interstitial Lung Disease (ILD)/Pneumonitis:** Monitor for new or worsening pulmonary symptoms. Immediately withhold LUMAKRAS for suspected ILD/pneumonitis and permanently discontinue if no other potential causes of ILD/pneumonitis are identified. (2.3, 5.2)

### ADVERSE REACTIONS

- Single agent in NSCLC:** The most common adverse reactions ( $\geq 20\%$ ) were diarrhea, musculoskeletal pain, nausea, fatigue, hepatotoxicity, and cough. The most common laboratory abnormalities ( $\geq 25\%$ ) were decreased lymphocytes, decreased hemoglobin, increased aspartate aminotransferase, increased alanine aminotransferase, decreased calcium, increased alkaline phosphatase, increased urine protein, and decreased sodium. (6.1)
- In combination with panitumumab in CRC:** The most common adverse reactions ( $\geq 20\%$ ) in clinical trials of LUMAKRAS in combination with panitumumab are rash, dry skin, diarrhea, stomatitis, fatigue and musculoskeletal pain. The most common Grade 3 or 4 laboratory abnormalities in  $\geq 2$  patients (4.3%) were decreased magnesium, decreased potassium, decreased corrected calcium, and increased potassium. (6.1)

To report **SUSPECTED ADVERSE REACTIONS**, contact Amgen Inc. at **1-800-77-AMGEN (1-800-772-6436)** or FDA at **1-800-FDA-1088** or [www.fda.gov/medwatch](http://www.fda.gov/medwatch).

-----**DRUG INTERACTIONS**-----

- Acid-Reducing Agents: Avoid coadministration with proton pump inhibitors (PPIs) and H<sub>2</sub> receptor antagonists. If an acid-reducing agent cannot be avoided, administer LUMAKRAS 4 hours before or 10 hours after a local antacid. (2.4, 7.1)
- Strong CYP3A4 Inducers: Avoid coadministration with strong CYP3A4 inducers. (7.1)
- CYP3A4 Substrates: Avoid coadministration with CYP3A4 substrates for which minimal concentration changes may lead to therapeutic failures of the substrate. If coadministration cannot be avoided, adjust the substrate dosage in accordance to its Prescribing Information. (7.2)
- P-gp substrates: Avoid coadministration with P-gp substrates for which minimal concentration changes may lead to serious toxicities. If coadministration cannot be avoided, decrease the substrate dosage in accordance to its Prescribing Information. (7.2)

-----**USE IN SPECIFIC POPULATIONS**-----

Lactation: Advise not to breastfeed. (8.2)

**See 17 for PATIENT COUNSELING INFORMATION and FDA-approved patient labeling.**

**Revised: 1/2025**

---

**FULL PRESCRIBING INFORMATION: CONTENTS\***

**1 INDICATIONS AND USAGE**

- 1.1 KRAS G12C-mutated Locally Advanced or Metastatic Non-Small Cell Lung Cancer (NSCLC)
- 1.2 KRAS G12C-mutated Metastatic Colorectal Cancer (mCRC)

**2 DOSAGE AND ADMINISTRATION**

- 2.1 Patient Selection
- 2.2 Recommended Dosage and Administration
- 2.3 Dosage Modifications for Adverse Reactions
- 2.4 Coadministration of LUMAKRAS with Acid-Reducing Agents

**3 DOSAGE FORMS AND STRENGTHS**

**4 CONTRAINDICATIONS**

**5 WARNINGS AND PRECAUTIONS**

- 5.1 Hepatotoxicity
- 5.2 Interstitial Lung Disease (ILD)/Pneumonitis

**6 ADVERSE REACTIONS**

- 6.1 Clinical Trials Experience

**7 DRUG INTERACTIONS**

- 7.1 Effects of Other Drugs on LUMAKRAS
- 7.2 Effects of LUMAKRAS on Other Drugs

**8 USE IN SPECIFIC POPULATIONS**

- 8.1 Pregnancy
- 8.2 Lactation
- 8.4 Pediatric Use
- 8.5 Geriatric Use
- 8.6 Hepatic Impairment

**11 DESCRIPTION**

**12 CLINICAL PHARMACOLOGY**

- 12.1 Mechanism of Action

12.2 Pharmacodynamics

12.3 Pharmacokinetics

### **13 NONCLINICAL TOXICOLOGY**

13.1 Carcinogenesis, Mutagenesis, Impairment of Fertility

13.2 Animal Toxicology and/or Pharmacology

### **14 CLINICAL STUDIES**

14.1 KRAS G12C-mutated Locally Advanced or Metastatic Non-Small Cell Lung Cancer

14.2 KRAS G12C-mutated Metastatic Colorectal Cancer

### **16 HOW SUPPLIED/STORAGE AND HANDLING**

### **17 PATIENT COUNSELING INFORMATION**

\* Sections or subsections omitted from the full prescribing information are not listed.

---

## **FULL PRESCRIBING INFORMATION**

### **1 INDICATIONS AND USAGE**

#### **1.1 KRAS G12C-mutated Locally Advanced or Metastatic Non-Small Cell Lung Cancer (NSCLC)**

LUMAKRAS as a single agent is indicated for the treatment of adult patients with *KRAS G12C*-mutated locally advanced or metastatic non-small cell lung cancer (NSCLC), as determined by an FDA-approved test [see *Dosage and Administration (2.1)*], who have received at least one prior systemic therapy.

This indication is approved under accelerated approval based on overall response rate (ORR) and duration of response (DOR) [see *Clinical Studies (14.1)*]. Continued approval for this indication may be contingent upon verification and description of clinical benefit in a confirmatory trial(s).

#### **1.2 KRAS G12C-mutated Metastatic Colorectal Cancer (mCRC)**

LUMAKRAS, in combination with panitumumab, is indicated for the treatment of adult patients with *KRAS G12C*-mutated metastatic colorectal cancer (mCRC), as determined by an FDA-approved test, who have received prior fluoropyrimidine-, oxaliplatin- and irinotecan-based chemotherapy [see *Dosage and Administration (2.1)* and *Clinical Studies (14.2)*].

### **2 DOSAGE AND ADMINISTRATION**

#### **2.1 Patient Selection**

KRAS G12C-mutated Locally Advanced or Metastatic NSCLC

Select patients for treatment of locally advanced or metastatic NSCLC with LUMAKRAS based on the presence of *KRAS G12C* mutation in tumor or plasma specimens. If no mutation is detected in a plasma specimen, test tumor tissue [see *Clinical Studies (14.1)*].

## KRAS G12C-mutated mCRC

Select patients for treatment of mCRC based on the presence of *KRAS* G12C mutation in tumor specimens [see *Clinical Studies (14.2)*].

Information on FDA-approved tests for the detection of *KRAS* G12C mutations is available at: <http://www.fda.gov/CompanionDiagnostics>.

## **2.2 Recommended Dosage and Administration**

### **LUMAKRAS as a Single Agent for *KRAS* G12C-mutated Locally Advanced or Metastatic NSCLC**

The recommended dosage of LUMAKRAS is 960 mg (three 320 mg tablets or four 240 mg tablets or eight 120 mg tablets) orally once daily until disease progression or unacceptable toxicity.

### **LUMAKRAS in Combination with Panitumumab for *KRAS* G12C-mutated mCRC**

The recommended dosage of LUMAKRAS is 960 mg (three 320 mg tablets or four 240 mg tablets or eight 120 mg tablets) orally once daily in combination with panitumumab until disease progression or unacceptable toxicity. Administer the first dose of LUMAKRAS prior to first panitumumab infusion.

Refer to the panitumumab full prescribing information for recommended panitumumab dosage information.

Take the daily dose of LUMAKRAS at the same time each day with or without food [see *Clinical Pharmacology (12.3)*]. Swallow tablets whole. Do not chew, crush or split tablets. If a dose of LUMAKRAS is missed by more than 6 hours, take the next dose as prescribed the next day. Do not take 2 doses at the same time to make up for the missed dose.

If vomiting occurs after taking LUMAKRAS, do not take an additional dose. Take the next dose as prescribed the next day.

### Administration to Patients Who Have Difficulty Swallowing Solids

Disperse tablets in 120 mL (4 ounces) of non-carbonated, room-temperature water without crushing. No other liquids should be used. Stir or swirl the cup for approximately 3 minutes until tablets are dispersed into small pieces (the tablets will not completely dissolve) and drink immediately or within 2 hours. The appearance of the mixture may range from pale yellow to bright yellow. Swallow the tablet dispersion. Do not chew pieces of the tablet. Rinse the container with an additional 120 mL (4 ounces) of water and drink. If the mixture is not consumed immediately, stir the mixture again to ensure that tablets are dispersed.

## **2.3 Dosage Modifications for Adverse Reactions**

LUMAKRAS dose reduction levels are summarized in Table 1.

If adverse reactions occur, a maximum of two dose reductions are permitted. Discontinue LUMAKRAS if patients are unable to tolerate the minimum dose of 240 mg once daily.

When LUMAKRAS is administered in combination with panitumumab, and LUMAKRAS is temporarily withheld or permanently discontinued, temporarily withhold or permanently

discontinue panitumumab, respectively [see *Clinical Studies (14.2)*]. Refer to the full prescribing information of panitumumab for dose modifications for adverse reactions associated with the use of panitumumab.

Treatment with LUMAKRAS as a single agent may be continued if panitumumab is permanently discontinued [see *Clinical Pharmacology (12.1)*, *Clinical Studies (14.2)*].

Refer to Table 2 for dose modification guidelines and management of adverse reactions associated with the use of LUMAKRAS as a single agent or as combination therapy with panitumumab.

**Table 1. Recommended LUMAKRAS Dose Reduction Levels for Adverse Reactions**

Dose Reduction Level	Dose
First dose reduction	480 mg (two 240 mg or four 120 mg tablets) once daily
Second dose reduction	240 mg (one 240 mg or two 120 mg tablets) once daily

**Table 2. Recommended LUMAKRAS Dosage Modifications for Adverse Reactions**

Adverse Reaction	Severity*	Dosage Modification†
Hepatotoxicity [see <i>Warnings and Precautions (5.1)</i> ]	AST or ALT > 3 × and up to 5 × ULN (or > 3 × and up to 5 × baseline if baseline abnormal) with symptoms or AST or ALT > 5 × ULN (or > 5 × baseline if baseline abnormal)	<ul style="list-style-type: none"> <li>Withhold LUMAKRAS until recovery to ≤ 3 × ULN or to ≤ 3 × baseline if baseline abnormal.</li> <li>Resume LUMAKRAS at the next lower dose level.</li> </ul>
	AST or ALT > 3 × ULN with total bilirubin > 2 × ULN	<ul style="list-style-type: none"> <li>Permanently discontinue LUMAKRAS if no alternative cause is identified.</li> <li>If alternative cause is identified, do not resume LUMAKRAS until AST/ALT/bilirubin return to baseline.</li> </ul>
Interstitial Lung Disease (ILD)/pneumonitis [see <i>Warnings</i> ]	Any Grade	<ul style="list-style-type: none"> <li>Withhold LUMAKRAS if ILD/pneumonitis is suspected.</li> <li>Permanently discontinue LUMAKRAS</li> </ul>

<i>and Precautions (5.2)]</i>		if ILD/pneumonitis is confirmed.
Nausea or vomiting despite appropriate supportive care (including anti-emetic therapy) <i>[see Adverse Reactions (6.1)]</i>	Grade 3 to 4	<ul style="list-style-type: none"> <li>• Withhold LUMAKRAS until recovery to <math>\leq</math> Grade 1 or baseline.</li> <li>• Resume LUMAKRAS at the next lower dose level.</li> </ul>
Diarrhea despite appropriate supportive care (including anti-diarrheal therapy) <i>[see Adverse Reactions (6.1)]</i>	Grade 3 to 4	<ul style="list-style-type: none"> <li>• Withhold LUMAKRAS until recovery to <math>\leq</math> Grade 1 or baseline.</li> <li>• Resume LUMAKRAS at the next lower dose level.</li> </ul>
Other adverse reactions <i>[see Adverse Reactions (6.1)]</i>	Grade 3 to 4	<ul style="list-style-type: none"> <li>• Withhold LUMAKRAS until recovery to <math>\leq</math> Grade 1 or baseline.</li> <li>• Resume LUMAKRAS at the next lower dose level.</li> </ul>

ALT = alanine aminotransferase; AST = aspartate aminotransferase; ULN = upper limit of normal

\* *Grading defined by National Cancer Institute Common Terminology Criteria for Adverse Events (NCI CTCAE) version 5.0.*

† When LUMAKRAS is administered in combination with panitumumab, withhold or permanently discontinue treatment with panitumumab when withholding or permanently discontinuing treatment with LUMAKRAS.

## 2.4 Coadministration of LUMAKRAS with Acid-Reducing Agents

Avoid coadministration of proton pump inhibitors (PPIs) and H<sub>2</sub> receptor antagonists with LUMAKRAS. If treatment with an acid-reducing agent cannot be avoided, take LUMAKRAS 4 hours before or 10 hours after administration of a local antacid *[see Drug Interactions (7.1) and Clinical Pharmacology (12.3)]*.

## 3 DOSAGE FORMS AND STRENGTHS

Tablets: 320 mg, beige, oval-shaped, immediate release, film-coated, debossed with "AMG" on one side and "320" on the opposite side.

Tablets: 240 mg, yellow, oval-shaped, immediate release, film-coated, debossed with "AMG" on one side and "240" on the opposite side.

Tablets: 120 mg, yellow, oblong-shaped, immediate release, film-coated, debossed with "AMG" on one side and "120" on the opposite side.

## 4 CONTRAINDICATIONS

None.

## 5 WARNINGS AND PRECAUTIONS

### 5.1 Hepatotoxicity

LUMAKRAS can cause hepatotoxicity and increased alanine aminotransferase (ALT) or increased aspartate aminotransferase (AST) which may lead to drug-induced liver injury and hepatitis.

In the pooled safety population of patients with NSCLC who received single agent LUMAKRAS 960 mg [see *Adverse Reactions (6.1)*], hepatotoxicity occurred in 27% of patients, of which 16% were Grade  $\geq$  3. Among patients with hepatotoxicity who required dosage modifications, 64% required treatment with corticosteroids.

In this pooled safety population of patients with NSCLC who received single agent LUMAKRAS 960 mg, 17% of patients who received LUMAKRAS had increased ALT/increased AST; of which 9% were Grade  $\geq$  3. The median time to first onset of increased ALT/AST was 6.3 weeks (range: 0.4 to 42). Increased ALT/AST leading to dose interruption or reduction occurred in 9% of patients treated with LUMAKRAS. LUMAKRAS was permanently discontinued due to increased ALT/AST in 2.7% of patients. Drug-induced liver injury occurred in 1.6% (all grades) including 1.3% (Grade  $\geq$  3).

In this pooled safety population of patients with NSCLC who received single agent LUMAKRAS 960 mg, a total of 40% patients with recent ( $\leq$  3 months) immunotherapy prior to starting LUMAKRAS had an event of hepatotoxicity. An event of hepatotoxicity was observed in 18% of patients who started LUMAKRAS more than 3 months after last dose of immunotherapy and in 17% of those who never received immunotherapy. Regardless of time from prior immunotherapy, 94% of hepatotoxicity events improved or resolved with dosage modification of LUMAKRAS, with or without corticosteroid treatment.

In the pooled safety population of patients with CRC who received LUMAKRAS 960 mg in combination with panitumumab [see *Adverse Reactions (6.1)*], hepatotoxicity occurred in 15% of patients, of which 4.8% were Grade 3. A total of 7% of patients who received LUMAKRAS had increased ALT or increased AST, of which 0.8% were Grade 3. The median time to first onset of increased ALT or increased AST was 10 weeks (range: 2 to 22). Increased ALT or increased AST leading to dose interruption occurred in 2.4% of patients. A total of 3.2% of patients who received LUMAKRAS had hyperbilirubinemia, of which 2.4% were Grade 3. The median time to first onset of hyperbilirubinemia was 12 weeks (range: 0, 29). Hyperbilirubinemia leading to dose interruption occurred in 1.6% of patients. Among patients with hepatotoxicity, 21% received corticosteroids.

Monitor liver function tests (ALT, AST, alkaline phosphatase and total bilirubin) prior to the start of LUMAKRAS, every 3 weeks for the first 3 months of treatment, then once a month or as clinically indicated, with more frequent testing in patients who develop transaminase and/or bilirubin elevations. Withhold, reduce the dose or permanently discontinue LUMAKRAS based on severity of the adverse reaction [see *Dosage and Administration (2.3)* and *Adverse Reactions (6.1)*]. Consider administering systemic

corticosteroids for the management of hepatotoxicity.

## 5.2 Interstitial Lung Disease (ILD)/Pneumonitis

LUMAKRAS can cause ILD/pneumonitis that can be fatal.

In the pooled safety population of patients with NSCLC who received single agent LUMAKRAS 960 mg [see *Adverse Reactions (6.1)*], ILD/pneumonitis occurred in 2.2% of patients, of which 1.1% were Grade  $\geq$  3, and 1 case was fatal. The median time to first onset for ILD/pneumonitis was 8.6 weeks (range: 2.1 to 36.7 weeks). LUMAKRAS was permanently discontinued due to ILD/pneumonitis in 1.3% of LUMAKRAS-treated patients. Monitor patients for new or worsening pulmonary symptoms indicative of ILD/pneumonitis (e.g., dyspnea, cough, fever). Immediately withhold LUMAKRAS in patients with suspected ILD/pneumonitis and permanently discontinue LUMAKRAS if no other potential causes of ILD/pneumonitis are identified [see *Dosage and Administration (2.3)* and *Adverse Reactions (6.1)*].

In the pooled safety population of patients with CRC who received LUMAKRAS 960 mg in combination with panitumumab, 1 patient experienced a Grade 1 event of ILD/pneumonitis [see *Adverse Reactions (6.1)*].

## 6 ADVERSE REACTIONS

The following clinically significant adverse reactions are discussed in greater detail in other sections of the labeling:

- Hepatotoxicity [see *Warnings and Precautions (5.1)*]
- Interstitial Lung Disease (ILD)/Pneumonitis [see *Warnings and Precautions (5.2)*]

### 6.1 Clinical Trials Experience

Because clinical trials are conducted under widely varying conditions, adverse reaction rates observed in the clinical trials of a drug cannot be directly compared to rates in the clinical trials of another drug and may not reflect the rates observed in practice.

The pooled safety population described in the WARNINGS AND PRECAUTIONS reflect exposure to LUMAKRAS as a single agent at 960 mg orally once daily until disease progression or unacceptable toxicity in 549 patients with NSCLC with *KRAS G12C* mutation in the following trials: CodeBreak 200 (NCT04303780), CodeBreak 100 (NCT03600883), CodeBreak 101 (NCT04185883) and CodeBreak 105 (NCT04380753). Among these 549 patients who received LUMAKRAS, 44% were exposed for 6 months or longer and 21% were exposed for greater than one year.

The pooled safety population described in WARNINGS AND PRECAUTIONS also reflects exposure to LUMAKRAS 960 mg once daily in combination with panitumumab in 126 patients who received LUMAKRAS in combination with panitumumab for mCRC in CodeBreak 300 (NCT05198934) and CodeBreak 101 (NCT04185883). Among the 126 patients who received LUMAKRAS 960 mg in combination with panitumumab, 40% were exposed for 6 months or longer and 10% were exposed for greater than one year.

#### Metastatic Non-Small Cell Lung Cancer

The safety of LUMAKRAS was evaluated in a subset of patients with *KRAS G12C*-mutated locally advanced or metastatic NSCLC in CodeBreak 100 [see *Clinical Studies (14.1)*].



Patients received LUMAKRAS 960 mg orally once daily until disease progression or unacceptable toxicity (n = 204). Among patients who received LUMAKRAS, 39% were exposed for 6 months or longer and 3% were exposed for greater than one year.

The median age of patients who received LUMAKRAS was 66 years (range: 37 to 86); 55% female; 80% White, 15% Asian, and 3% Black.

Serious adverse reactions occurred in 50% of patients treated with LUMAKRAS. Serious adverse reactions in  $\geq 2\%$  of patients were pneumonia (8%), hepatotoxicity (3.4%), and diarrhea (2%). Fatal adverse reactions occurred in 3.4% of patients who received LUMAKRAS due to respiratory failure (0.8%), pneumonitis (0.4%), cardiac arrest (0.4%), cardiac failure (0.4%), gastric ulcer (0.4%), and pneumonia (0.4%).

Permanent discontinuation of LUMAKRAS due to an adverse reaction occurred in 9% of patients. Adverse reactions resulting in permanent discontinuation of LUMAKRAS in  $\geq 2\%$  of patients included hepatotoxicity (4.9%).

Dosage interruptions of LUMAKRAS due to an adverse reaction occurred in 34% of patients. Adverse reactions which required dosage interruption in  $\geq 2\%$  of patients were hepatotoxicity (11%), diarrhea (8%), musculoskeletal pain (3.9%), nausea (2.9%), and pneumonia (2.5%).

Dose reductions of LUMAKRAS due to an adverse reaction occurred in 5% of patients. Adverse reactions which required dose reductions in  $\geq 2\%$  of patients included increased ALT (2.9%) and increased AST (2.5%).

The most common adverse reactions ( $\geq 20\%$ ) were diarrhea, musculoskeletal pain, nausea, fatigue, hepatotoxicity, and cough. The most common laboratory abnormalities ( $\geq 25\%$ ) were decreased lymphocytes, decreased hemoglobin, increased aspartate aminotransferase, increased alanine aminotransferase, decreased calcium, increased alkaline phosphatase, increased urine protein, and decreased sodium.

Table 3 summarizes the common adverse reactions observed in CodeBreak 100.

**Table 3. Adverse Reactions ( $\geq 10\%$ ) of Patients with KRAS G12C-Mutated NSCLC who Received LUMAKRAS in CodeBreak 100\***

Adverse Reaction	LUMAKRAS N = 204	
	All Grades (%)	Grades 3 to 4 (%)
<b>Gastrointestinal disorders</b>		
Diarrhea	42	5
Nausea	26	1
Vomiting	17	1.5
Constipation	16	0.5
Abdominal pain <sup>†</sup>	15	1.0
<b>Hepatobiliary disorders</b>		
Hepatotoxicity <sup>‡</sup>	25	12
<b>Respiratory, thoracic, and mediastinal disorders</b>		
Cough <sup>§</sup>	20	1.5

Dyspnea <sup>¶</sup>	16	2.9
<b>Musculoskeletal and connective tissue disorders</b>		
Musculoskeletal pain <sup>#</sup>	35	8
Arthralgia	12	1.0
<b>General disorders and administration site conditions</b>		
Fatigue <sup>Ⓟ</sup>	26	2.0
Edema <sup>Ⓠ</sup>	15	0
<b>Metabolism and nutrition disorders</b>		
Decreased appetite	13	1.0
<b>Infections and infestations</b>		
Pneumonia <sup>Ⓢ</sup>	12	7
<b>Skin and subcutaneous tissue disorders</b>		
Rash <sup>Ⓡ</sup>	12	0

\* Grading defined by NCI CTCAE version 5.0.

† Abdominal pain includes abdominal pain, abdominal pain upper, and abdominal pain lower.

‡ Hepatotoxicity includes alanine aminotransferase increased, aspartate aminotransferase increased, blood bilirubin increased, drug-induced liver injury, hepatitis, hepatotoxicity, liver function test increased, and transaminases increased.

§ Cough includes cough, productive cough, and upper-airway cough syndrome.

¶ Dyspnea includes dyspnea and dyspnea exertional.

# Musculoskeletal pain includes back pain, bone pain, musculoskeletal chest pain, musculoskeletal discomfort, musculoskeletal pain, myalgia, neck pain, non-cardiac chest pain, and pain in extremity.

Ⓟ Fatigue includes fatigue and asthenia.

Ⓠ Edema includes generalized edema, localized edema, edema, edema peripheral, periorbital edema, and testicular edema.

Ⓢ Pneumonia includes pneumonia, pneumonia aspiration, pneumonia bacterial, and pneumonia staphylococcal.

Ⓡ Rash includes dermatitis, dermatitis acneiform, rash, rash-maculopapular, and rash pustular.

Table 4 summarizes the selected laboratory adverse reactions observed in CodeBreakK 100.

**Table 4. Select Laboratory Abnormalities ( $\geq 20\%$ ) that Worsened from Baseline in Patients with KRAS G12C-Mutated NSCLC who Received LUMAKRAS in CodeBreakK 100**

Laboratory Abnormalities	LUMAKRAS N = 204*	
	Grades 1 to 4 (%)	Grades 3 to 4 (%)
<b>Chemistry</b>		
Increased aspartate aminotransferase	39	9
Increased alanine aminotransferase	38	11

Decreased calcium	35	0
Increased alkaline phosphatase	33	2.5
Increased urine protein	29	3.9
Decreased sodium	28	1.0
Decreased albumin	22	0.5
<b>Hematology</b>		
Decreased lymphocytes	48	2
Decreased hemoglobin	43	0.5
Increased activated partial thromboplastin time	23	1.5

\* N = number of patients who had at least one on-study assessment for the parameter of interest.

### Metastatic Colorectal Cancer

The safety of LUMAKRAS in combination with panitumumab was evaluated in the CodeBreak 300 study [see *Clinical Studies (14.2)*]. Patients with *KRAS* G12C-mutated mCRC received LUMAKRAS 960 mg orally once daily in combination with panitumumab 6 mg/kg intravenously (IV) once every 2 weeks (N = 47), LUMAKRAS 240 mg orally once daily in combination with panitumumab 6 mg/kg IV once every 2 weeks (N = 50), or the investigator's choice of standard of care (SOC) trifluridine/ tipiracil or regorafenib (N = 50). Among patients who received LUMAKRAS 960 mg orally once daily in combination with panitumumab, 36% were exposed to LUMAKRAS for greater than 6 months and 6% were exposed for greater than 12 months.

The median age of patients who received LUMAKRAS 960 mg in combination with panitumumab arm was 63 years (range: 37-79 years); 38% were age 65 years or older; 49% were female; 79% were White and 13% were Asian.

Serious adverse reactions occurred in 26% of patients receiving LUMAKRAS 960 mg in combination with panitumumab. Serious adverse reactions in  $\geq 2$  patients receiving LUMAKRAS 960 mg in combination with panitumumab were sepsis (6%) and intestinal obstruction (4.3%). Fatal adverse reactions occurred in 2 patients (4.3%) receiving LUMAKRAS 960 mg in combination with panitumumab, consisting of cardiac arrest and sepsis (1 patient each).

Permanent discontinuation of LUMAKRAS due to an adverse reaction occurred in 1 patient for decreased corrected calcium.

Dosage interruptions of LUMAKRAS due to an adverse reaction occurred in 26% of patients. Adverse reactions which required dosage interruption in  $\geq 2$  patients were rash, hepatotoxicity and intestinal obstruction.

A dose reduction of LUMAKRAS due to an adverse reaction occurred in 1 patient for nausea.

The most common adverse reactions ( $\geq 20\%$ ) in patients receiving LUMAKRAS 960 mg in combination with panitumumab were rash, dry skin, diarrhea, stomatitis, fatigue and musculoskeletal pain.

The most common Grade 3-4 laboratory abnormalities in  $\geq 2$  patients (4.3%) were decreased magnesium, decreased potassium, decreased corrected calcium, and

increased potassium.

Table 5 and Table 6 summarize the adverse reactions and laboratory abnormalities, respectively, identified in CodeBreak 300.

**Table 5. Adverse Reactions ( $\geq 10\%$ ) in Patients with KRAS G12C-Mutated mCRC who Received LUMAKRAS 960 mg in Combination with Panitumumab in CodeBreak 300**

Adverse Reaction	LUMAKRAS 960 mg in combination with panitumumab N = 47		Trifluridine/tipiracil or regorafenib N = 50	
	All Grades (%)	Grade 3 or 4 (%)	All Grades (%)	Grade 3 or 4 (%)
<b>Skin and subcutaneous tissue disorders</b>				
Rash*	87	26	8	2
Dry skin†	28	0	2	0
Pruritis	17	0	4	0
Nail Disorder‡	17	0	0	0
Skin fissure	13	0	0	0
Palmar-plantar erythrodysesthesia syndrome	13	0	10	4
<b>Gastrointestinal disorders</b>				
Diarrhea§	28	6	26	0
Stomatitis¶	26	0	14	0
Nausea	17	2.1	36	4
Constipation	15	2.1	10	0
Abdominal pain#	15	0	18	2
Vomiting	13	2.1	10	2
<b>General disorders</b>				
Fatigue <sup>b</sup>	21	0	34	2
<b>Musculoskeletal and connective tissue disorders</b>				
Musculoskeletal pain <sup>β</sup>	21	2.1	14	2
<b>Hematological disorders</b>				
Hemorrhage <sup>α</sup>	13	2.1	2	0
<b>Eye disorders</b>				
Conjunctivitis <sup>è</sup>	11	0	2	0

\* Rash includes dermatitis acneiform, dermatosis, drug eruption, eczema, erythema, hand dermatitis, rash, rash erythematous, rash maculo-papular, rash papular, rash pruritic, rash pustular, and skin toxicity.

† Dry skin includes dry skin, xerosis, and xeroderma.

‡ Nail disorders includes nail avulsion, nail cuticle fissure, nail disorder, nail toxicity, and paronychia.

§ Diarrhea includes diarrhea, gastroenteritis, and diarrhea hemorrhagic.

¶ Stomatitis includes mucosal inflammation, stomatitis, mouth ulceration, angular cheilitis, and cheilitis.

# Abdominal pain includes abdominal pain, abdominal pain upper, abdominal pain lower, abdominal discomfort, and hepatic pain.

- p Fatigue includes asthenia and fatigue.  
 ß Musculoskeletal pain includes arthralgia, back pain, myalgia, musculoskeletal chest pain, bone pain, and pain in extremity.  
 à Hemorrhage includes epistaxis, gastrointestinal hemorrhage, vaginal hemorrhage, rectal hemorrhage, hematochezia, hemorrhage, hemorrhage urinary tract, hematospermia, and hematuria.  
 è Conjunctivitis includes conjunctival hyperemia, conjunctivitis, and conjunctivitis allergic.

**Table 6. Select Laboratory Abnormalities ( $\geq 20\%$ ) that Worsened from Baseline in Patients with KRAS G12C-Mutated mCRC who Received LUMAKRAS 960 mg in combination with panitumumab in CodeBreak 300\***

Laboratory Abnormalities	LUMAKRAS 960 mg in combination with panitumumab		Trifluridine/tipiracil or Regorafenib	
	All Grades (%)	Grade 3 or 4 (%)	All Grades (%)	Grade 3 or 4 (%)
<b>Chemistry</b>				
Magnesium decreased	76	24	8	0
Calcium (corrected) decreased	74	4.3	46	0
Aspartate aminotransferase increased	39	0	22	2
Alkaline Phosphatase increased	33	2.2	33	0
Creatine kinase increased	30	2.3	7	0
Alanine Aminotransferase increased	28	0	16	2
Potassium decreased	26	7	12	0
Albumin decreased	26	2.2	22	0
Urine protein increased	23	0	22	6
Potassium increased	22	4.3	6	0
Glucose decreased	22	0	2	0
<b>Hematology</b>				
Hemoglobin decreased	30	0	58	6
Lymphocytes decreased	26	2.2	56	8
White blood cells decreased	24	0	48	14

\* The denominator used to calculate the rate varied from 44 to 46 in the LUMAKRAS + panitumumab arm and 18 to 50 in the trifluridine/tipiracil or regorafenib arm based on the number of patients with a baseline value and at least one post-treatment value.

## 7 DRUG INTERACTIONS

### 7.1 Effects of Other Drugs on LUMAKRAS

#### Acid-Reducing Agents

The solubility of sotorasib is pH-dependent. Coadministration of LUMAKRAS with gastric

acid-reducing agents decreased sotorasib concentrations [see *Clinical Pharmacology (12.3)*], which may reduce the efficacy of sotorasib. Avoid coadministration of LUMAKRAS with proton pump inhibitors (PPIs), H<sub>2</sub> receptor antagonists, and locally acting antacids. If coadministration with an acid-reducing agent cannot be avoided, administer LUMAKRAS 4 hours before or 10 hours after administration of a locally acting antacid [see *Dosage and Administration (2.4)*].

### Strong CYP3A4 Inducers

Sotorasib is a CYP3A4 substrate. Coadministration of LUMAKRAS with a strong CYP3A4 inducer decreased sotorasib concentrations [see *Clinical Pharmacology (12.3)*], which may reduce the efficacy of sotorasib. Avoid coadministration of LUMAKRAS with strong CYP3A4 inducers.

## **7.2 Effects of LUMAKRAS on Other Drugs**

### CYP3A4 Substrates

Sotorasib is a CYP3A4 inducer. Coadministration of LUMAKRAS with a CYP3A4 substrate decreased its plasma concentrations [see *Clinical Pharmacology (12.3)*], which may reduce the efficacy of the substrate. Avoid coadministration of LUMAKRAS with CYP3A4 sensitive substrates, for which minimal concentration changes may lead to therapeutic failures of the substrate. If coadministration cannot be avoided, increase the sensitive CYP3A4 substrate dosage in accordance with its Prescribing Information.

### P-glycoprotein (P-gp) Substrates

Sotorasib is a P-gp inhibitor. Coadministration of LUMAKRAS with a P-gp substrate increased its plasma concentrations [see *Clinical Pharmacology (12.3)*], which may increase the adverse reactions of the substrate. Avoid coadministration of LUMAKRAS with P-gp substrates, for which minimal concentration changes may lead to serious toxicities. If coadministration cannot be avoided, decrease the P-gp substrate dosage in accordance with its Prescribing Information.

### Breast Cancer Resistance Protein (BCRP) Substrates

Sotorasib is a BCRP-inhibitor. Coadministration of LUMAKRAS with a BCRP substrate increased its plasma concentrations [see *Clinical Pharmacology (12.3)*], which may increase the risk of adverse reactions of the substrate. When coadministered with LUMAKRAS, monitor for adverse reactions of the BCRP substrate and decrease the BCRP substrate dosage in accordance with its Prescribing Information.

## **8 USE IN SPECIFIC POPULATIONS**

### **8.1 Pregnancy**

#### Risk Summary

There are no available data on LUMAKRAS use in pregnant women. In rat and rabbit embryo-fetal development studies, oral sotorasib did not cause adverse developmental effects or embryo-lethality at exposures up to 4.6 times the human exposure at the 960 mg clinical dose (see *Data*).

Refer to the Full Prescribing Information of panitumumab for pregnancy risk information

and contraception recommendations when LUMAKRAS is administered in combination with panitumumab.

In the U.S. general population, the estimated background risk of major birth defects and miscarriage in clinically recognized pregnancies is 2% to 4% and 15% to 20%, respectively.

## Data

### *Animal Data*

In a rat embryo-fetal development study, once daily oral administration of sotorasib to pregnant rats during the period of organogenesis resulted in maternal toxicity at the 540 mg/kg dose level (approximately 4.6 times the human exposure based on area under the curve (AUC) at the clinical dose of 960 mg). Sotorasib did not cause adverse developmental effects and did not affect embryo-fetal survival at doses up to 540 mg/kg.

In a rabbit embryo-fetal development study, once daily oral administration of sotorasib during the period of organogenesis resulted in lower fetal body weights and a reduction in the number of ossified metacarpals in fetuses at the 100 mg/kg dose level (approximately 2.6 times the human exposure based on AUC at the clinical dose of 960 mg), which was associated with maternal toxicity including decreased body weight gain and food consumption during the dosing phase. Sotorasib did not cause adverse developmental effects and did not affect embryo-fetal survival at doses up to 100 mg/kg.

## **8.2 Lactation**

### Risk Summary

There are no data on the presence of sotorasib or its metabolites in human milk, the effects on the breastfed child, or on milk production. Because of the potential for serious adverse reactions in breastfed children, advise women not to breastfeed during treatment with LUMAKRAS and for 1 week after the last dose.

Refer to the Full Prescribing Information of panitumumab for lactation recommendations when LUMAKRAS is administered in combination with panitumumab.

## **8.4 Pediatric Use**

The safety and effectiveness of LUMAKRAS have not been established in pediatric patients.

## **8.5 Geriatric Use**

Of the 357 patients with any tumor type who received LUMAKRAS 960 mg orally once daily in CodeBreak 100, 46% were 65 and over, and 10% were 75 and over. No overall differences in safety or effectiveness were observed between older patients and younger patients treated with LUMAKRAS as a single agent.

In a pooled analysis of 132 patients who received LUMAKRAS 960 mg in combination with panitumumab for *KRAS* G12C-mutated mCRC, 30% were 65 and over while 9% were 75 and over. No overall differences in safety or efficacy were observed between older patients ( $\geq 65$  years of age) compared to younger patients, treated with

LUMAKRAS 960 mg in combination with panitumumab.

## 8.6 Hepatic Impairment

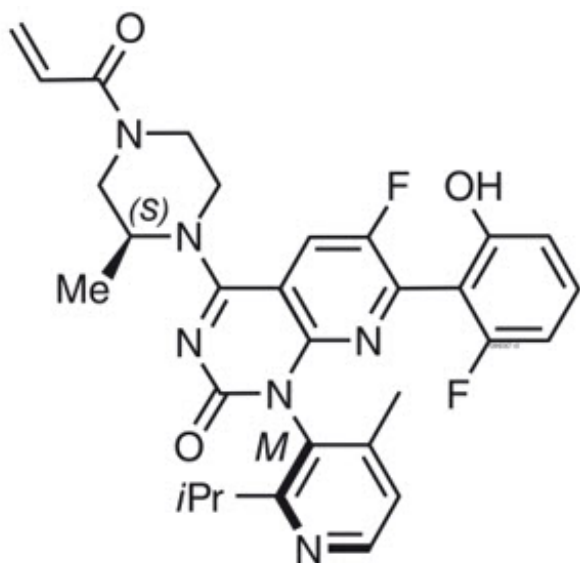
No dosage modification is recommended in patients with mild to moderate hepatic impairment (Child-Pugh A or B).

The effect of severe hepatic impairment (Child-Pugh C) on the safety of LUMAKRAS is unknown. Monitor for sotorasib adverse reactions in patients with hepatic impairment more frequently since these patients may be at increased risk for adverse reactions including hepatotoxicity [see *Clinical Pharmacology (12.3)*].

## 11 DESCRIPTION

Sotorasib is an inhibitor of the RAS GTPase family. The molecular formula is  $C_{30}H_{30}F_2N_6O_3$ , and the molecular weight is 560.6 g/mol. The chemical name of sotorasib is 6-fluoro-7-(2-fluoro-6-hydroxyphenyl)-(1M)-1-[4-methyl-2-(propan-2-yl)pyridin-3-yl]-4-[(2S)-2-methyl-4-(prop-2-enoyl)piperazin-1-yl]pyrido[2,3-d]pyrimidin-2(1H)-one.

The chemical structure of sotorasib is shown below:



Sotorasib has pKa values of 8.06 and 4.56. The solubility of sotorasib in the aqueous media decreases over the range pH 1.2 to 6.8 from 1.3 mg/mL to 0.03 mg/mL.

LUMAKRAS is supplied as film-coated tablets for oral use containing 320 mg, 240 mg or 120 mg of sotorasib. Inactive ingredients in the tablet core are microcrystalline cellulose, lactose monohydrate, croscarmellose sodium, and magnesium stearate. The film coating material consists of polyvinyl alcohol, titanium dioxide, polyethylene glycol, talc, iron oxide yellow and iron oxide red (320 mg tablet only).

## 12 CLINICAL PHARMACOLOGY

### 12.1 Mechanism of Action



Sotorasib is an inhibitor of KRAS G12C, a tumor-restricted, mutant-oncogenic form of the RAS GTPase, KRAS. Sotorasib forms an irreversible, covalent bond with the unique cysteine of KRAS G12C, locking the protein in an inactive state that prevents downstream signaling without affecting wild-type KRAS. Sotorasib blocked KRAS signaling, inhibited cell growth, and promoted apoptosis only in *KRAS* G12C tumor cell lines. Sotorasib inhibited *KRAS* G12C *in vitro* and *in vivo* with minimal detectable off-target activity. In mouse tumor xenograft models, sotorasib-treatment led to tumor regressions and prolonged survival, and was associated with anti-tumor immunity in *KRAS* G12C models.

In the setting of *KRAS* G12C-mutant CRC, epidermal growth factor receptor (EGFR) activation has been identified as a mechanism of resistance to *KRAS* G12C inhibition. In a murine patient-derived colorectal tumor xenograft model, the combination of sotorasib and panitumumab, an EGFR antagonist, had increased antitumor activity compared to either sotorasib or panitumumab alone.

## 12.2 Pharmacodynamics

Sotorasib exposure-response relationships and the time course of the pharmacodynamic response are unknown.

### Cardiac Electrophysiology

At the approved recommended dosage, LUMAKRAS does not cause large mean increases in the QTc interval (> 20 msec).

## 12.3 Pharmacokinetics

The pharmacokinetics of sotorasib have been characterized in healthy subjects and in patients with *KRAS* G12C-mutated solid tumors, including NSCLC. Sotorasib exhibited non-linear, time-dependent, pharmacokinetics over the dose range of 180 mg to 960 mg (0.19 to 1 time the approved recommended dosage) once daily with similar systemic exposure (i.e., AUC<sub>0-24h</sub> and C<sub>max</sub>) across doses at steady state. Sotorasib systemic exposure was comparable between film-coated tablets and film-coated tablets predispersed in water administered under fasted conditions. Sotorasib plasma concentrations reached steady state within 22 days. No accumulation was observed after repeat LUMAKRAS dosages with a mean accumulation ratio of 0.56 (coefficient of variation (CV): 59%).

### Absorption

The median time to sotorasib peak plasma concentration is 1 hour.

### *Effect of Food*

When 960 mg LUMAKRAS was administered with a high-fat, high-calorie meal (containing approximately 800 to 1000 calories with 150, 250, and 500 to 600 calories from protein, carbohydrate and fat, respectively) in patients, sotorasib AUC<sub>0-24h</sub> increased by 25% compared to administration under fasted conditions.

### Distribution

The sotorasib mean volume of distribution (V<sub>d</sub>) at steady state is 211 L (CV: 135%). *In vitro*, sotorasib plasma protein binding is 89%.

### Elimination

The sotorasib mean terminal elimination half-life is 5 hours (standard deviation (SD): 2). At 960 mg LUMAKRAS once daily, the sotorasib steady state apparent clearance is 26.2 L/hr (CV: 76%).

### *Metabolism*

The main metabolic pathways of sotorasib are non-enzymatic conjugation and oxidative metabolism with CYP3As.

### *Excretion*

After a single dose of radiolabeled sotorasib, 74% of the dose was recovered in feces (53% unchanged) and 6% (1% unchanged) in urine.

### Specific Populations

No clinically meaningful differences in the pharmacokinetics of sotorasib were observed based on age (28 to 86 years), sex, race (White, Black and Asian), body weight (36.8 to 157.9 kg), line of therapy, ECOG PS (0, 1), mild and moderate renal impairment (eGFR:  $\geq 30$  mL/min/1.73 m<sup>2</sup>), or mild hepatic impairment (AST or ALT  $< 2.5 \times$  ULN or total bilirubin  $< 1.5 \times$  ULN). The effect of severe renal impairment on sotorasib pharmacokinetics has not been studied.

### *Hepatic Impairment*

The mean AUC of sotorasib decreased by 25% in subjects with moderate hepatic impairment (Child-Pugh B) and increased by 4% in subjects with severe hepatic impairment (Child-Pugh C) compared to subjects with normal hepatic function following a single dose of 960 mg LUMAKRAS.

## **Clinical Studies**

*Acid-Reducing Agents:* Coadministration of repeat doses of omeprazole (PPI) with a single dose of LUMAKRAS decreased sotorasib  $C_{max}$  by 65% and AUC by 57% under fed conditions, and decreased sotorasib  $C_{max}$  by 57% and AUC by 42% under fasted conditions. Coadministration of a single dose of famotidine (H<sub>2</sub> receptor antagonist) given 10 hours prior to and 2 hours after a single dose of LUMAKRAS under fed conditions decreased sotorasib  $C_{max}$  by 35% and AUC by 38%.

*Strong CYP3A4 Inducers:* Coadministration of repeat doses of rifampin (a strong CYP3A4 inducer) with a single dose of LUMAKRAS decreased sotorasib  $C_{max}$  by 35% and AUC by 51%.

*Other Drugs:* No clinically meaningful effect on the exposure of sotorasib was observed following coadministration of LUMAKRAS with itraconazole (a combined strong CYP3A4 and P-gp inhibitor) and a single dose of rifampin (an OATP1B1/1B3 inhibitor), or metformin (a MATE1/MATE2-K substrate).

*CYP3A4 substrates:* Coadministration of LUMAKRAS with midazolam (a sensitive CYP3A4 substrate) decreased midazolam  $C_{max}$  by 48% and AUC by 53%.

*P-gp substrates:* Coadministration of LUMAKRAS with digoxin (a P-gp substrate) increased digoxin  $C_{max}$  by 91% and AUC by 21%.

*MATE1/MATE2-K substrates:* No clinically meaningful effect on the exposure of metformin (a MATE1/MATE2-K substrate) was observed following coadministration of LUMAKRAS.

*BCRP substrates:* Coadministration of LUMAKRAS with rosuvastatin (a BCRP substrate) increased rosuvastatin  $C_{max}$  by 70% and AUC by 34%.

### ***In Vitro Studies***

*Cytochrome P450 (CYP) Enzymes:* Sotorasib may induce CYP2C8, CYP2C9 and CYP2B6. Sotorasib does not inhibit CYP1A2, CYP2B6, CYP2C8, CYP2C9, CYP2C19, or CYP2D6.

## **13 NONCLINICAL TOXICOLOGY**

### **13.1 Carcinogenesis, Mutagenesis, Impairment of Fertility**

Carcinogenicity studies have not been performed with sotorasib.

Sotorasib was not mutagenic in an *in vitro* bacterial reverse mutation (Ames) assay and was not genotoxic in the *in vivo* rat micronucleus and comet assays.

Fertility/early embryonic development studies were not conducted with sotorasib. There were no adverse effects on female or male reproductive organs in general toxicology studies conducted in dogs and rats.

### **13.2 Animal Toxicology and/or Pharmacology**

In rats, renal toxicity including minimal to marked histologic tubular degeneration/necrosis and increased kidney weight, urea nitrogen, creatinine, and urinary biomarkers of renal tubular injury were present at doses resulting in exposures approximately  $\geq 0.5$  times the human AUC at the clinical dose of 960 mg. Increases in cysteine S-conjugate  $\beta$ -lyase pathway metabolism in the rat kidney compared to human may make rats more susceptible to renal toxicity due to local formation of a putative sulfur-containing metabolite than humans.

In the 3-month toxicology study in dogs, sotorasib induced findings in the liver (centrilobular hepatocellular hypertrophy), pituitary gland (hypertrophy of basophils), and thyroid gland (marked follicular cell atrophy, moderate to marked colloid depletion, and follicular cell hypertrophy) at exposures approximately 0.4 times the human exposure based on AUC at the clinical dose of 960 mg. These findings may be due to an adaptive response to hepatocellular enzyme induction and subsequent reduced thyroid hormone levels (i.e., secondary hypothyroidism). Although thyroid levels were not measured in dogs, induction of uridine diphosphate glucuronosyltransferase known to be involved in thyroid hormone metabolism was confirmed in the *in vitro* dog hepatocyte assay.

## **14 CLINICAL STUDIES**

### **14.1 KRAS G12C-mutated Locally Advanced or Metastatic Non-Small Cell Lung Cancer**

The efficacy of LUMAKRAS was demonstrated in a subset of patients enrolled in a single-arm, open-label, multicenter trial (CodeBreak 100 [NCT03600883]). Eligible patients were required to have locally advanced or metastatic *KRAS G12C*-mutated NSCLC with disease progression after receiving an immune checkpoint inhibitor and/or platinum-based chemotherapy, an Eastern Cooperative Oncology Group Performance Status

(ECOG PS) of 0 or 1, and at least one measurable lesion as defined by Response Evaluation Criteria in Solid Tumors (RECIST v1.1).

All patients were required to have prospectively identified *KRAS G12C*-mutated NSCLC in tumor tissue samples by using the QIAGEN *therascreen*<sup>®</sup> *KRAS* RGQ PCR Kit performed in a central laboratory. Of 126 total enrolled subjects, 2 (2%) were unevaluable for efficacy analysis due to the absence of radiographically measurable lesions at baseline. Of the 124 patients with *KRAS G12C* mutations confirmed in tumor tissue, plasma samples from 112 patients were tested retrospectively using the Guardant360<sup>®</sup> CDx. 78/112 patients (70%) had *KRAS G12C* mutation identified in plasma specimen, 31/112 patients (28%) did not have *KRAS G12C* mutation identified in plasma specimen and 3/112 (2%) were unevaluable due to Guardant360<sup>®</sup> CDx test failure.

A total of 124 patients had at least one measurable lesion at baseline assessed by Blinded Independent Central Review (BICR) according to RECIST v1.1 and were treated with LUMAKRAS 960 mg once daily until disease progression or unacceptable toxicity. The major efficacy outcome measures were objective response rate (ORR), and duration of response (DOR) as evaluated by BICR according to RECIST v1.1.

The baseline demographic and disease characteristics of the study population were: median age 64 years (range: 37 to 80) with 48%  $\geq$  65 years and 8%  $\geq$  75 years; 50% Female; 82% White, 15% Asian, 2% Black; 70% ECOG PS 1; 96% had stage IV disease; 99% with non-squamous histology; 81% former smokers, 12% current smokers, 5% never smokers. All patients received at least 1 prior line of systemic therapy for metastatic NSCLC; 43% received only 1 prior line of therapy, 35% received 2 prior lines of therapy, 23% received 3 prior lines of therapy; 91% received prior anti-PD-1/PD-L1 immunotherapy, 90% received prior platinum-based chemotherapy, 81% received both platinum-based chemotherapy and anti-PD-1/PD-L1. The sites of known extra-thoracic metastasis included 48% bone, 21% brain, and 21% liver.

Efficacy results are summarized in Table 7.

**Table 7. Efficacy Results for Patients with *KRAS G12C*-mutated NSCLC who Received LUMAKRAS in CodeBreak 100**

<b>Efficacy Parameter</b>	<b>LUMAKRAS N = 124</b>
<b>Objective Response Rate (95% CI)*</b>	36 (28, 45)
Complete response rate, %	2
Partial response rate, %	35
<b>Duration of Response*</b>	
Median <sup>†</sup> , months (range)	10 (1.3+, 11.1)
Patients with duration $\geq$ 6 months <sup>‡</sup> , %	58%

CI = confidence interval

\* Assessed by Blinded Independent Central Review (BICR).

† Estimate using Kaplan-Meier method.

‡ Observed proportion of patients with duration of response beyond landmark time.

## 14.2 KRAS G12C-mutated Metastatic Colorectal Cancer

The efficacy of LUMAKRAS in combination with panitumumab was evaluated in CodeBreak 300 [NCT05198934], a multicenter, randomized, open-label, active-controlled study conducted in previously treated patients with *KRAS G12C*-mutated mCRC. Key eligibility criteria included patients 18 years of age or older, who had received at least one prior line of therapy for mCRC, and who had received fluoropyrimidine, oxaliplatin, and irinotecan for metastatic disease unless there was a medical contraindication.

All patients were also required to have prospectively identified *KRAS G12C*-mutated mCRC in tumor tissue samples by using the QIAGEN theascreen<sup>®</sup> KRAS RGQ PCR Kit performed in a central laboratory. Other eligibility criteria included an ECOG PS of  $\leq 2$  and at least one measurable lesion as defined by RECIST v1.1.

A total of 160 patients with previously treated mCRC with the *KRAS G12C* mutation were randomized 1:1:1 to receive either LUMAKRAS 960 mg orally once daily and panitumumab 6 mg/kg IV every 2 weeks (N = 53), or LUMAKRAS 240 mg orally once daily and panitumumab 6 mg/kg IV every 2 weeks (N = 53), or investigator's choice of SOC trifluridine/tipiracil or regorafenib (N = 54). Randomization was stratified by prior anti-angiogenic therapy (yes or no), time from initial diagnosis of metastatic disease to randomization ( $\geq 18$  months;  $< 18$  months), and ECOG status (0 or 1 versus 2). Patients received treatment until disease progression, lack of clinical benefit or intolerance to treatment. LUMAKRAS discontinuation required panitumumab discontinuation, however, patients could continue to receive LUMAKRAS if panitumumab was discontinued [see *Dosage and Administration (2.3)*]. Four patients randomized to LUMAKRAS 960 mg in combination with panitumumab continued LUMAKRAS single agent therapy after discontinuing panitumumab.

The major efficacy outcome measure was progression-free survival (PFS) as evaluated by BICR according to RECIST 1.1. Additional efficacy outcome measures included overall survival (OS), overall response rate (ORR), and duration of response (DOR). Only the results of the approved dosing regimen LUMAKRAS 960 mg in combination with panitumumab are described below.

Of the 107 patients randomized to either LUMAKRAS 960 mg once daily in combination with panitumumab or the control arms, the median age was 64 years (range: 34-81 years); 46% were age 65 years or older; 50% were female; 74% were White; 17% were Asian and 97% of the patients had ECOG PS 0 or 1. The primary site of disease was colon (69%) or rectum (31%). The median number of prior lines of therapy for metastatic disease was 2. Among the 107 patients, 100% received prior fluoropyrimidine, 99% received prior oxaliplatin, 93% received prior irinotecan and 18% of patients had received prior trifluridine and tipiracil, or regorafenib.

The trial demonstrated a statistically significant improvement in PFS for patients randomized to LUMAKRAS 960 mg in combination with panitumumab compared to the investigator's choice SOC. The final analysis of OS was not statistically significant.

The final analysis of PFS for patients randomized to LUMAKRAS 240 mg in combination with panitumumab compared to investigator's choice of SOC was not statistically significant.

The efficacy results from CodeBreak 300 are summarized in Table 8 and Figure 1.

**Table 8. Efficacy Results for Patients with KRAS G12C-mutated mCRC in CodeBreak 300**

<b>Efficacy Parameters</b>	<b>Sotorasib 960 mg QD + Panitumumab (N = 53)</b>	<b>SOC (trifluridine/tipiracil or regorafenib) (N = 54)</b>
<b>Progression-Free Survival (PFS) per BICR</b>		
Number of Events (%)	32 (60)	35 (65)
Median in months (95% CI)	5.6 (4.2, 6.3)	2 (1.9, 3.9)
Hazard ratio (95% CI)*	0.48 (0.3,0.78)	
p-value (2-sided)†	0.005	
<b>Overall Survival (OS)‡</b>		
Deaths (%)	24 (45)	30 (56)
Median in months (95% CI)	NR (8.6, NR)	10.3 (7, NR)
Hazard ratio (95% CI)*	0.7 (0.41, 1.18)	
<b>Overall Response Rate (ORR) per BICR</b>		
ORR, % (95% CI)§	26 (15, 40)	0 (0, 7)
CR, n (%)	1 (1.9)	0
PR, n (%)	13 (25)	0
<b>Duration of Response (DOR)</b>		
Median in months, (range)¶	4.4 (1.9+, 6+)	-

N = Number of randomized subjects, NR = Not Reached, QD = once daily, SOC = standard of care, CR = complete response, PR = partial response, BICR = Blinded Independent Central Review Committee, CI = Confidence Interval

\* Hazard ratios and 95% CIs were estimated using a stratified Cox proportional hazards model.

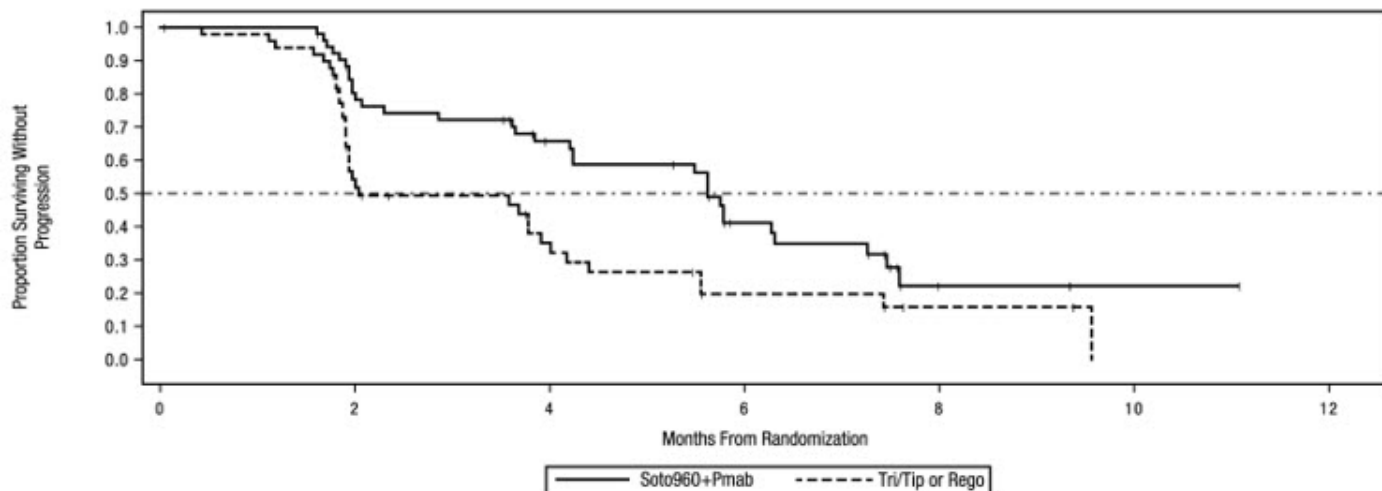
† p-value was calculated using a stratified log-rank test.

‡ OS analysis was based on 6-month additional follow-up data from the time of PFS primary analysis.

§ 95% CIs were estimated using the Clopper-Pearson method.

¶ For DOR + indicates censored subjects.

**Figure 1. Kaplan-Meier Curve for Progression-Free Survival in CodeBreak 300**



Number of Subjects at Risk:

Soto960+Pmab	53	40	28	13	2	1	0
Tri/Tip or Rego	54	22	12	5	2	0	0

Soto960+Pmab = Sotorasib 960 mg + Panitumumab. Tri/Tip or Rego = Trifluridine and Tipiracil or Regorafenib.

Censor indicated by vertical bar |. Stratified Cox HR and stratified log-rank p-value for Soto+Pmab vs Tri/Tip Regorafenib are provided.

GRH2602 v6

## 16 HOW SUPPLIED/STORAGE AND HANDLING

### How Supplied

LUMAKRAS (sotorasib) 320 mg tablets are beige, oval-shaped, film-coated, debossed with "AMG" on one side and "320" on the opposite side, and are supplied as follows:

- Carton containing one bottle of 90 tablets with child-resistant closure, NDC 55513-504-50

LUMAKRAS (sotorasib) 240 mg tablets are yellow, oval-shaped, film-coated, debossed with "AMG" on one side and "240" on the opposite side, and are supplied as follows:

- Carton containing one bottle of 120 tablets with child-resistant closure, NDC 55513-512-60

LUMAKRAS (sotorasib) 120 mg tablets are yellow, oblong-shaped, film-coated, debossed with "AMG" on one side and "120" on the opposite side, and are supplied as follows:

- Carton containing two bottles of 120 tablets with child-resistant closure, NDC 55513-488-02
- Carton containing one bottle of 240 tablets with child-resistant closure, NDC 55513-488-24

### Storage and Handling

Store at 20°C to 25°C (68°F to 77°F). Excursions permitted from 15°C to 30°C (59°F to 86°F) [see USP Controlled Room Temperature].

## 17 PATIENT COUNSELING INFORMATION

Advise the patient to read the FDA-approved patient labeling (Patient Information).

### Hepatotoxicity

Advise patients to immediately contact their healthcare provider for signs and symptoms of liver dysfunction [see *Warnings and Precautions (5.1)*].

#### Interstitial Lung Disease (ILD)/Pneumonitis

Advise patients to contact their healthcare provider immediately to report new or worsening respiratory symptoms [see *Warnings and Precautions (5.2)*].

#### Lactation

Advise women not to breastfeed during treatment with LUMAKRAS and for 1 week after the last dose [see *Use in Specific Populations (8.2)*]. Refer to the Full Prescribing Information of panitumumab for lactation information, when LUMAKRAS is used in combination with panitumumab.

#### Drug Interactions

Advise patients to inform their healthcare provider of all concomitant medications, including prescription medicines, over-the-counter drugs, vitamins, dietary and herbal products. Inform patients to avoid proton pump inhibitors, and H<sub>2</sub> receptor antagonists while taking LUMAKRAS [see *Drug Interactions (7.1) and (7.2)*].

If coadministration with an acid-reducing agent cannot be avoided, inform patients to take LUMAKRAS 4 hours before or 10 hours after a locally acting antacid [see *Dosage and Administration (2.4)*].

#### Missed Dose

If a dose of LUMAKRAS is missed by greater than 6 hours, resume treatment as prescribed the next day [see *Dosage and Administration (2.2)*].

#### LUMAKRAS in combination with panitumumab

Advise patients taking LUMAKRAS in combination with panitumumab to:

- take the first dose of LUMAKRAS prior to the first panitumumab infusion [see *Dosage and Administration (2.2)*].
- stop taking panitumumab whenever LUMAKRAS is withheld or discontinued [see *Dosage and Administration (2.3)*].

LUMAKRAS<sup>®</sup> (sotorasib)

Manufactured by:

Amgen Inc.

One Amgen Center Drive

Thousand Oaks, CA 91320-1799 U.S.A.

Patent: <http://pat.amgen.com/lumakras/>

© 2021-2025 Amgen Inc. All rights reserved.

1XXXXXX - V7

<p style="text-align: center;"><b>PATIENT INFORMATION</b> <b>LUMAKRAS<sup>®</sup> (loo-ma-kraas)</b> <b>(sotorasib) tablets</b></p>
---

#### **What is LUMAKRAS?**

LUMAKRAS is a prescription medicine used in adults:



- alone to treat non-small cell lung cancer (NSCLC):
  - that has spread to other parts of the body or cannot be removed by surgery, **and**
  - whose tumor has an abnormal KRAS G12C gene, **and**
  - who have received at least one prior treatment for their cancer.
- in combination with a prescription medicine called panitumumab to treat colon or rectal cancer (CRC):
  - that has spread to other parts of the body **and**
  - whose tumor has an abnormal KRAS G12C gene, **and**
  - who have previously received certain chemotherapy medicines.

Your healthcare provider will perform a test to make sure that LUMAKRAS is right for you.

It is not known if LUMAKRAS is safe and effective in children.

### **What should I tell my healthcare provider before taking LUMAKRAS?**

**Before taking LUMAKRAS, tell your healthcare provider about all your medical conditions, including if you:**

- have liver problems.
- have lung or breathing problems other than lung cancer.
- are pregnant or plan to become pregnant. It is not known if LUMAKRAS will harm your unborn baby.
- are breastfeeding or plan to breastfeed. It is not known if LUMAKRAS passes into your breast milk. Do not breastfeed during treatment with LUMAKRAS and for 1 week after the last dose.

**Tell your healthcare provider about all the medicines you take**, including prescription and over-the-counter medicines, vitamins, dietary, and herbal supplements. LUMAKRAS can affect the way some other medicines work, and some other medicines can affect the way LUMAKRAS works.

**Especially tell your healthcare provider** if you take antacid medicines, including Proton Pump Inhibitor (PPI) medicines or H<sub>2</sub> blockers during treatment with LUMAKRAS. Ask your healthcare provider if you are not sure.

### **How should I take LUMAKRAS?**

- Take LUMAKRAS exactly as your healthcare provider tells you to take it. Do not change your dose or stop taking LUMAKRAS unless your healthcare provider tells you to.
- Take your prescribed dose of LUMAKRAS 1 time each day, at the same time each day.
- For colon or rectal cancer, you will also receive panitumumab through a vein in your arm (intravenously) given by your healthcare provider. You will first take LUMAKRAS before you receive your first dose of panitumumab. Your healthcare provider will temporarily or permanently stop your treatment with panitumumab if your treatment with LUMAKRAS is temporarily or permanently stopped.
- Take LUMAKRAS with or without food.
- Swallow LUMAKRAS tablets whole. Do not chew, crush, or split tablets.
- If you cannot swallow LUMAKRAS tablets whole:
  - Place your prescribed dose of LUMAKRAS in a glass of 4 ounces (120 mL) of non-carbonated, room temperature water without crushing the tablets. Do not use any other liquids.

- Stir or swirl the cup for about 3 minutes until the tablets are in small pieces (the tablets will not completely dissolve). The color of the mixture may be pale yellow to bright yellow.
- Drink the LUMAKRAS and water mixture right away or within 2 hours of preparing. Do not chew pieces of the tablet.
- Rinse the glass with an additional 4 ounces (120 mL) of water and drink to make sure that you have taken the full dose of LUMAKRAS.
- If you do not drink the mixture right away, stir or swirl the mixture again before drinking.
- If you take an antacid medicine, take LUMAKRAS either 4 hours before or 10 hours after the antacid.
- If you miss a dose of LUMAKRAS, take the dose as soon as you remember. If it has been more than 6 hours, do not take the dose. Take your next dose at your regularly scheduled time the next day. Do not take 2 doses at the same time to make up for a missed dose.
- If you vomit after taking a dose of LUMAKRAS, do not take an extra dose. Take your next dose at your regularly scheduled time the next day.

### **What are possible side effects of LUMAKRAS?**

#### **LUMAKRAS may cause serious side effects, including:**

- **Liver problems.** Abnormal liver blood tests are common with LUMAKRAS and can sometimes be severe. Your healthcare provider should do blood tests before starting and during treatment with LUMAKRAS to check your liver function. Tell your healthcare provider right away if you develop any signs or symptoms of liver problems, including:
  - your skin or the white part of your eyes turns yellow (jaundice)
  - dark or "tea-colored" urine
  - light-colored stools (bowel movements)
  - tiredness or weakness
  - nausea or vomiting
  - bleeding or bruising
  - loss of appetite
  - pain, aching, or tenderness on the right side of your stomach-area (abdomen)
- **Lung or breathing problems.** LUMAKRAS may cause inflammation of the lungs that can lead to death. Tell your healthcare provider or get emergency medical help right away if you have new or worsening shortness of breath, cough, or fever.

Your healthcare provider may change your dose, temporarily stop, or permanently stop treatment with LUMAKRAS if you develop side effects.

#### **The most common side effects of LUMAKRAS when used alone for NSCLC include:**

- diarrhea
- muscle or bone pain
- nausea
- tiredness
- cough
- changes in certain blood tests

#### **The most common side effects of LUMAKRAS when used in combination with panitumumab for CRC include:**

- skin rash
- dry skin
- tiredness

- diarrhea
- mouth sores
- muscle and bone pain
- changes in certain blood tests

These are not all the possible side effects of LUMAKRAS.

Call your doctor for medical advice about side effects. You may report side effects to FDA at 1-800-FDA-1088.

You may also report side effects to Amgen at 1-800-772-6436 (1-800-77-AMGEN).

### **How should I store LUMAKRAS?**

---

- Store LUMAKRAS at room temperature between 68°F to 77°F (20°C to 25°C).
- The bottle has a child-resistant closure.

**Keep LUMAKRAS and all medicines out of the reach of children.**

### **General information about the safe and effective use of LUMAKRAS.**

---

Medicines are sometimes prescribed for purposes other than those listed in a Patient Information leaflet. Do not use LUMAKRAS for a condition for which it was not prescribed. Do not give LUMAKRAS to other people, even if they have the same symptoms that you have. It may harm them. You can ask your pharmacist or healthcare provider for information about LUMAKRAS that is written for healthcare professionals.

### **What are the ingredients in LUMAKRAS?**

---

**Active Ingredient:** sotorasib

**Inactive Ingredients:** microcrystalline cellulose, lactose monohydrate, croscarmellose sodium, and magnesium stearate. Tablet film coating material contains polyvinyl alcohol, titanium dioxide, polyethylene glycol, talc, iron oxide yellow and iron oxide red (320 mg tablet only).

Manufactured by: Amgen Inc., One Amgen Center Drive, Thousand Oaks, CA 91320-1799 U.S.A.

© 2021, 2023, 2025 Amgen Inc. All rights reserved.

For more information, go to [www.LUMAKRAS.com](http://www.LUMAKRAS.com) or call 1-800-772-6436 (1-800-77-AMGEN).

This Patient Information has been approved by the U.S. Food and Drug Administration.

Revised:  
01/2025

[part number] v3

## **PRINCIPAL DISPLAY PANEL - 120 mg Tablet Bottle Carton Label - NDC 55513-488-02**

NDC 55513-488-02

LUMAKRAS™  
(sotorasib) TABLETS

120 mg

Each tablet contains 120 mg sotorasib.

Store at 20°C to 25°C (68°F to 77°F). Excursions permitted from 15°C to 30°C (59°F to 86°F).

Recommended Dosage: See Prescribing Information.

NDC 55513-488-02



# LUMAKRAS™

(sotorasib) TABLETS

120 mg

Each tablet contains 120 mg sotorasib.

Store at 20°C to 25°C (68°F to 77°F). Excursions permitted from 15°C to 30°C (59°F to 86°F).

Recommended Dosage: See Prescribing Information.

GTIN  
SN Lot Exp



AMGEN®

## PRINCIPAL DISPLAY PANEL - 120 mg Tablet Bottle Carton Label - NDC 55513-488-24

NDC 55513-488-24

LUMAKRAS™  
(sotorasib) TABLETS

120 mg

Each tablet contains 120 mg sotorasib.

Store at 20°C to 25°C (68°F to 77°F).  
Excursions permitted from 15°C to 30°C  
(59°F to 86°F).

Recommended Dosage: See Prescribing Information.

AMGEN®

3 55513 48824 2

NDC 55513-488-24

**LUMAKRAS™**  
(sotorasib) TABLETS

**120 mg**

Each tablet contains 120 mg sotorasib.  
Store at 20°C to 25°C (68°F to 77°F).  
Excursions permitted from 15°C to 30°C (59°F to 86°F).

Recommended Dosage: See Prescribing Information.

GTIN  
SN  
Lot  
Exp.

AMGEN®

**PRINCIPAL DISPLAY PANEL - 320 mg Tablet Bottle Carton Label**

NDC 55513-504-50

LUMAKRAS®  
(sotorasib) TABLETS

320 mg | New strength

Each tablet contains 320 mg sotorasib.

Store at 20°C to 25°C (68°F to 77°F).  
Excursions permitted from 15°C to 30°C  
(59°F to 86°F).

Recommended Dosage: See Prescribing  
Information.

AMGEN®



NDC 55513-504-50

# LUMAKRAS®

(sotorasib) TABLETS

**320 mg** | **New strength**

Each tablet contains 320 mg sotorasib.

Store at 20°C to 25°C (68°F to 77°F).  
Excursions permitted from 15°C to 30°C  
(59°F to 86°F).

Recommended Dosage: See Prescribing  
Information.

GTIN  
SN Lot Exp.



AMGEN®

**PRINCIPAL DISPLAY PANEL - 240 mg Tablet Bottle Carton Label**

NDC 55513-512-60

LUMAKRAS®  
(sotorasib) TABLETS

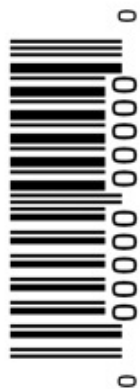
240 mg | New strength

Each tablet contains 240 mg sotorasib.

Store at 20°C to 25°C (68°F to 77°F).  
Excursions permitted from 15°C to 30°C  
(59°F to 86°F).

Recommended Dosage: See Prescribing  
Information.

AMGEN®



NDC 55513-512-60

**LUMAKRAS®**  
(sotorasib) TABLETS

**240 mg** | New strength

Each tablet contains 240 mg sotorasib.  
Store at 20°C to 25°C (68°F to 77°F).  
Excursions permitted from 15°C to 30°C  
(59°F to 86°F).  
Recommended Dosage: See Prescribing  
Information.

GTIN  
SN  
Lot  
Exp.



AMGEN®

# LUMAKRAS

sotorasib tablet, coated

## Product Information

<b>Product Type</b>	HUMAN PRESCRIPTION DRUG	<b>Item Code (Source)</b>	NDC:55513-488
<b>Route of Administration</b>	ORAL		

## Active Ingredient/Active Moiety

Ingredient Name	Basis of Strength	Strength
<b>SOTORASIB</b> (UNII: 2B2VM6UC8G) (SOTORASIB - UNII:2B2VM6UC8G)	SOTORASIB	120 mg

## Inactive Ingredients

Ingredient Name	Strength
<b>MICROCRYSTALLINE CELLULOSE</b> (UNII: OP1R32D61U)	
<b>LACTOSE MONOHYDRATE</b> (UNII: EWQ57Q8I5X)	
<b>CROSCARMELLOSE SODIUM</b> (UNII: M28OL1HH48)	
<b>MAGNESIUM STEARATE</b> (UNII: 70097M6I30)	

## Product Characteristics

<b>Color</b>	YELLOW	<b>Score</b>	no score
<b>Shape</b>	RECTANGLE	<b>Size</b>	16mm
<b>Flavor</b>		<b>Imprint Code</b>	AMG120
<b>Contains</b>			

## Packaging

#	Item Code	Package Description	Marketing Start Date	Marketing End Date
1	NDC:55513-488-02	2 in 1 CARTON	05/28/2021	
1	NDC:55513-488-01	120 in 1 BOTTLE, PLASTIC; Type 0: Not a Combination Product		
2	NDC:55513-488-24	1 in 1 CARTON	05/28/2021	
2	NDC:55513-488-40	240 in 1 BOTTLE, PLASTIC; Type 0: Not a Combination Product		
3	NDC:55513-488-96	1 in 1 CARTON	05/28/2021	
3		120 in 1 BOTTLE, PLASTIC; Type 0: Not a Combination Product		

## Marketing Information

Marketing Category	Application Number or Monograph Citation	Marketing Start Date	Marketing End Date
--------------------	--	----------------------	--------------------



NDA	NDA214665	05/28/2021	
-----	-----------	------------	--

## LUMAKRAS

sotorasib tablet, coated

### Product Information

<b>Product Type</b>	HUMAN PRESCRIPTION DRUG	<b>Item Code (Source)</b>	NDC:55513-504
<b>Route of Administration</b>	ORAL		

### Active Ingredient/Active Moiety

Ingredient Name	Basis of Strength	Strength
<b>SOTORASIB</b> (UNII: 2B2VM6UC8G) (SOTORASIB - UNII:2B2VM6UC8G)	SOTORASIB	320 mg

### Inactive Ingredients

Ingredient Name	Strength
<b>MICROCRYSTALLINE CELLULOSE</b> (UNII: OP1R32D61U)	
<b>LACTOSE MONOHYDRATE</b> (UNII: EWQ57Q8I5X)	
<b>CROSCARMELLOSE SODIUM</b> (UNII: M28OL1HH48)	
<b>MAGNESIUM STEARATE</b> (UNII: 70097M6I30)	

### Product Characteristics

<b>Color</b>	BROWN (beige)	<b>Score</b>	no score
<b>Shape</b>	OVAL	<b>Size</b>	19mm
<b>Flavor</b>		<b>Imprint Code</b>	AMG320
<b>Contains</b>			

### Packaging

#	Item Code	Package Description	Marketing Start Date	Marketing End Date
1	NDC:55513-504-50	1 in 1 CARTON	02/02/2023	
1		90 in 1 BOTTLE, PLASTIC; Type 0: Not a Combination Product		

### Marketing Information

Marketing Category	Application Number or Monograph Citation	Marketing Start Date	Marketing End Date
NDA	NDA214665	02/02/2023	

**LUMAKRAS**

sotorasib tablet, coated

## Product Information

<b>Product Type</b>	HUMAN PRESCRIPTION DRUG	<b>Item Code (Source)</b>	NDC:55513-512
<b>Route of Administration</b>	ORAL		

## Active Ingredient/Active Moiety

<b>Ingredient Name</b>	<b>Basis of Strength</b>	<b>Strength</b>
<b>SOTORASIB</b> (UNII: 2B2VM6UC8G) (SOTORASIB - UNII:2B2VM6UC8G)	SOTORASIB	240 mg

## Inactive Ingredients

<b>Ingredient Name</b>	<b>Strength</b>
<b>MICROCRYSTALLINE CELLULOSE</b> (UNII: OP1R32D61U)	
<b>LACTOSE MONOHYDRATE</b> (UNII: EWQ57Q8I5X)	
<b>CROSCARMELLOSE SODIUM</b> (UNII: M28OL1HH48)	
<b>MAGNESIUM STEARATE</b> (UNII: 70097M6I30)	

## Product Characteristics

<b>Color</b>	YELLOW	<b>Score</b>	no score
<b>Shape</b>	OVAL	<b>Size</b>	18mm
<b>Flavor</b>		<b>Imprint Code</b>	AMG240
<b>Contains</b>			

## Packaging

<b>#</b>	<b>Item Code</b>	<b>Package Description</b>	<b>Marketing Start Date</b>	<b>Marketing End Date</b>
1	NDC:55513-512-60	1 in 1 CARTON	06/27/2024	
1		120 in 1 BOTTLE, PLASTIC; Type 0: Not a Combination Product		

## Marketing Information

<b>Marketing Category</b>	<b>Application Number or Monograph Citation</b>	<b>Marketing Start Date</b>	<b>Marketing End Date</b>
NDA	NDA214665	06/27/2024	

**Labeler** - Amgen Inc (039976196)