

ATO ALL - glycerin liquid
GL BioTech

Disclaimer: Most OTC drugs are not reviewed and approved by FDA, however they may be marketed if they comply with applicable regulations and policies. FDA has not evaluated whether this product complies.

Drug Facts

glycerin

melon ext, lactobacillus, fermented ginseng ext, pomegranate ext, plum ext, lotus flower ext, etc

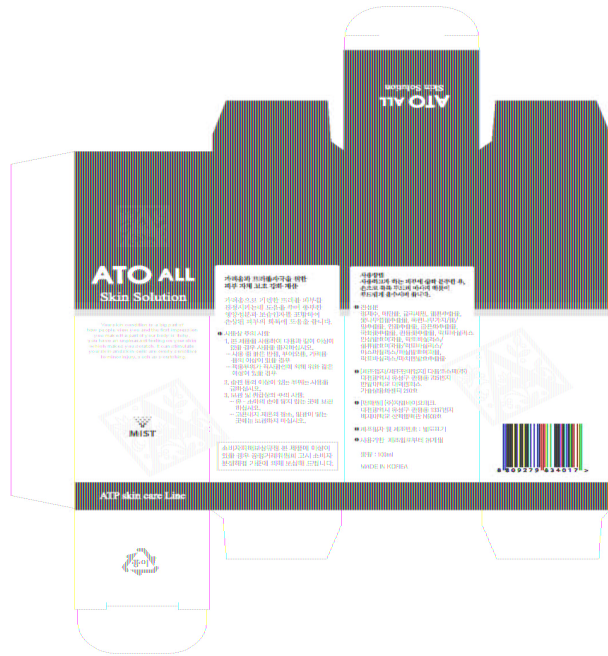
for itching skin, lichenous skin trouble, skin balancing

keep out or reach of the children

1. For the first 5 days, spray 3 times a day for breakfast, lunch and dinner
2. After shower dry your body completely and then spray.
3. Spraying on the trouble spot may hurt due to disinfecting action.
4. Please refrain from the food that accompanies a skin reaction.
5. After use, you might want to use the other basic cosmetic products.

- avoid direct sun exposure, keep it refrigerated or in cooler places
- do not eat

for external use only



ATO ALL

glycerin liquid

Product Information

Product Type	HUMAN OTC DRUG	Item Code (Source)	NDC:69224-1001
Route of Administration	TOPICAL		

Active Ingredient/Active Moiety

Ingredient Name	Basis of Strength	Strength
GLYCERIN (UNII: PDC6A3C0OX) (GLYCERIN - UNII:PDC6A3C0OX)	GLYCERIN	2 g in 100 mL

Inactive Ingredients

Ingredient Name	Strength
WATER (UNII: 059QF0KO0R)	
ALCOHOL (UNII: 3K9958V90M)	

Packaging

#	Item Code	Package Description	Marketing Start Date	Marketing End Date
1	NDC:69224-1001-1	100 mL in 1 BOTTLE		

Marketing Information			
Marketing Category	Application Number or Monograph Citation	Marketing Start Date	Marketing End Date
OTC monograph final	part347	10/17/2014	

Labeler - GL BioTech (689057539)

Registrant - GL BioTech (689057539)

Establishment

Name	Address	ID/FEI	Business Operations
GL BioTech		689057539	manufacture(69224-1001)

Revised: 10/2014

GL BioTech