

**ERBORIAN CC DULL CORRECT SPF25- octinoxate, octisalate, titanium dioxide,
zinc oxide cream
LABORATOIRES M&L**

Erborian - CC Dull Correct SPF25

Drug Facts

Active ingredients

Ethylhexyl methoxycinnamate / Octinoxate 6.00%

Ethylhexyl salicylate / Octisalate 2.00%

Titanium dioxide 4.70%

Zinc oxide 3.84%

Purpose

Sunscreen

Uses

- Helps prevent sunburn
- If used as directed with other sun protection measures (see Directions), decreases the risk of skin cancer and early skin aging caused by the sun

Warnings

For external use only

Do not use

- on damaged or broken skin

When using this product

- keep out of eyes. Rinse with water to remove

Stop use and ask a doctor if

- rash occurs.

Keep out of reach of children.

If swallowed, get medical help or contact a Poison Control Center right away

Directions

For sunscreen use:

- Apply liberally 15 minutes before sun exposure

- Reapply at least every 2 hours
- Use a water resistant sunscreen if swimming or sweating
- Spending time in the sun increases your risk of skin cancer and early skin aging. To decrease this risk, regularly use a sunscreen with a Broad Spectrum SPF value of 15 or higher and other sun protection measures including: **Sun Protection Measures.**
- Limit time in the sun, especially from 10 a.m. -2 p.m.
- Wear long-sleeved shirts, pants, hats and sunglasses
- Children under 6 months of age: Ask a doctor

Other information

Protect the product in this container from excessive heat and direct sun

Inactive ingredients

AQUA/WATER - CYCLOMETHICONE - MICA - C12-15 ALKYL BENZOATE - DIPROPYLENE GLYCOL - GLYCERIN - CI 77891/TITANIUM DIOXIDE - PEG-10 DIMETHICONE - METHYL TRIMETHICONE - CI 77007/ULTRAMARINES - DIMETHICONE - BUTYLENE GLYCOL - DISTEARDIMONIUM HECTORITE - CI 77492/IRON OXIDES - MAGNESIUM SULFATE - CENTELLA ASIATICA EXTRACT - GLYCYRRHIZA GLABRA (LICORICE) ROOT EXTRACT - TALC - VINYL DIMETHICONE/METHICONE SILSESQUIOXANE CROSSPOLYMER - DIMETHICONE/ VINYL DIMETHICONE CROSSPOLYMER - ALUMINUM HYDROXIDE - TRIHYDROXYSTEARIN - METHICONE - PALMITIC ACID - POLYESTER-1 - STEARIC ACID - SILICA DIMETHYL SILYLATE - TOCOPHERYL ACETATE - ETHYLHEXYLGLYCERIN - TIN OXIDE - PHENOXYETHANOL - PARFUM/FRAGRANCE - HEXYL CINNAMAL- ALPHA-ISOMETHYL IONONE - LINALOOL - CITRONELLOL - GERANIOL - EUGENOL - LIMONENE - CI 77491/IRON OXIDES - CI 77499/IRON OXIDES

Questions or comments?

Call toll free 1-888-975-2162

Erborian - CC Dull Correct SPF25, 15mL (68021-914-15)



Uses

- Helps prevent sunburn
- If used as directed with other sun protection measures (see *Directions*), decreases the risk of skin cancer and early skin aging caused by the sun

Warnings

For external use only

Do not use ■ on damaged or broken skin

When using this product ■ keep out of eyes. Rinse with water to remove

Stop use and ask a doctor if ■ rash occurs.

Keep out of reach of children. If swallowed, get medical help or contact a Poison Control Center right away

Directions

For sunscreen use:

- Apply liberally 15 minutes before sun exposure
- Reapply at least every 2 hours
- Use a water resistant sunscreen if swimming or sweating
- **Sun Protection Measures.** Spending time in the sun increases your risk of skin cancer and early skin aging. To decrease this risk, regularly use a sunscreen with a Broad Spectrum SPF value of 15 or higher and other sun protection measures including:
 - Limit time in the sun, especially from 10 a.m. - 2 p.m.
 - Wear long-sleeved shirts, pants, hats and sunglasses
 - Children under 6 months of age: Ask a doctor

Other information

- Protect the product in this container from excessive heat and direct sun ▶

GLYCERIN - CI 77891/TITANIUM DIOXIDE - PEG-10 DIMETHICONE - METHYL TRIMETHICONE - CI 77007/ULTRAMARINES - DIMETHICONE - BUTYLENE GLYCOL - DISTEARDIMONIUM HECTORITE - CI 77492/IRON OXIDES - MAGNESIUM SULFATE - CENTELLA ASIATICA EXTRACT - GLCYRRHIZA GLABRA (LICORICE) ROOT EXTRACT - TALC - VINYL DIMETHICONE/METHICONE SILSESQUOXANE CROSSPOLYMER - DIMETHICONE/VINYL DIMETHICONE CROSSPOLYMER - ALUMINIUM HYDROXIDE - TRIHYDROXYSTEARIN - METHICONE - PALMITIC ACID - POLYESTER-1 - STEARIC ACID - SILICA DIMETHYL SILYLATE - TOCOPHERYL ACETATE - ETHYLHEXYLGLYCERIN - TIN OXIDE - PHENOXYETHANOL - PARFUM/FRAGRANCE - HEXYL CINNAMAL - ALPHA-ISOMETHYL IONONE - LINALOOL - CITRONELLOL - GERANIOL - EUGENOL - LIMONENE - CI 77491/IRON OXIDES - CI 77499/IRON OXIDES

Questions or comments?

Call toll free
1-888-975-2162

CC DULL CORRECT

À LA CENTELLA ASIATICA

**AUTOMATIC PERFECTOR
BOOST OF RADIANCE
EVEN COMPLEXION**

BROAD SPECTRUM
SPF 25 SUNSCREEN



15 ML NET WT. 0.5 OZ.

CC DULL CORRECT is a versatile, illuminating formula that works to: 1) automatically correct lack of radiance, thanks to the concealing action of its violet pigments and the luminous finish of its mineral pearls, 2) even out skin tone and blur imperfections with its encapsulated pigments. The dullness of the complexion can be intensified by external aggressors that the skin is exposed to every day, such as pollution, fine particles, UV rays, stress or a hectic lifestyle. CC DULL CORRECT is enriched with an extract of Licorice, which is known for its brightening and antioxidant properties.

Enriched with Centella Asiatica, CC DULL CORRECT works to soothe and moisturize the skin while enhancing the complexion. Complexion looks revived, and is visibly more beautiful and radiant. [Apply a fine layer to the face, like a day cream or makeup base. Blend until it adjusts perfectly to your skin tone.] Avoid contact with the eyes. Tested under dermatological supervision. Non-comedogenic.

www.erborian.com
Made in South Korea
M&L - 108 rue de Richelieu - Paris - France



Erborian - CC Dull Correct SPF25, 45mL (68021-914-45)





erborian
KOREAN SKIN THERAPY
PARIS • SEOUL

Drug Facts

Active ingredients Purpose

Ethylhexyl methoxycinnamate / Octinoxate 6.00%.....Sunscreen
Ethylhexyl salicylate / Octisalate 2.00%.....Sunscreen
Titanium dioxide 4.70% Sunscreen
Zinc oxide 3.84%.....Sunscreen

Uses

- Helps prevent sunburn
- If used as directed with other sun protection measures (see **Directions**), decreases the risk of skin cancer and early skin aging caused by the sun

Warnings

For external use only

Do not use ■ on damaged or broken skin

When using this product ■ keep out of eyes. Rinse with water to remove

Stop use and ask a doctor if

- rash occurs.
- **Keep out of reach of children.** If swallowed, get medical help or contact a Poison Control Center right away

Directions

For sunscreen use:

- Apply liberally 15 minutes before sun exposure
- Reapply at least every 2 hours
- Use a water resistant sunscreen if swimming or sweating
- **Sun Protection Measures.** Spending time in the sun increases your risk of skin cancer and early skin aging. To decrease this risk, regularly use a sunscreen with a Broad Spectrum SPF value of 15 or higher and other sun protection measures including:
 - Limit time in the sun, especially from 10 a.m. - 2 p.m.
 - Wear long-sleeved shirts, pants, hats and sunglasses
 - Children under 6 months of age: Ask a doctor

Other information

- Protect the product in this container from excessive heat and direct sun

Drug Facts (continued)

Inactive ingredients

AQUAWATER - CYCLOMETHICONE - MICA - C12-15 ALKYL BENZOATE - DIPROPYLENE GLYCOL - GLYCERIN - CI 77891/TITANIUM DIOXIDE - PEG-10 DIMETHICONE - METHYL TRIMETHICONE - CI 77007/ULTRAMARINES - DIMETHICONE - BUTYLENE GLYCOL - DISTEARDIMONIUM HECTORITE - CI 77492/IRON OXIDES - MAGNESIUM SULFATE - CENTELLA ASIATICA EXTRACT - GLYCYRRHIZA GLABRA (LICORICE) ROOT EXTRACT - TALC - VINYL DIMETHICONE/METHICONE SILSESQUOXANE CROSSPOLYMER - DIMETHICONE/VINYL DIMETHICONE CROSSPOLYMER - ALUMINUM HYDROXIDE - TRIHYDROXYSTEARIN - METHICONE - PALMITIC ACID - POLYESTER-1 - STEARIC ACID - SILICA DIMETHYL Silylate - TOCOPHERYL ACETATE - ETHYLHEXYLGLYCERIN - TIN OXIDE - PHENOXYETHANOL - PARFUM/FRAGRANCE - HEXYL CINNAMAL - ALPHA-ISOMETHYL IONONE - LINALOOL - CITRONELLOL - GERANIOL - EUGENOL - LIMONENE - CI 77491/IRON OXIDES - CI 77499/IRON OXIDES

Questions or comments?

Call toll free
1-888-975-2162

CC DULL CORRECT

À LA CENTELLA ASIATICA

**AUTOMATIC PERFECTOR
BOOST OF RADIANCE
EVEN COMPLEXION**

BROAD SPECTRUM
SPF 25 SUNSCREEN

Dullness corrector



Centella A.

45 ML
NET WT. 1.5 OZ.

The Korean secret to a visibly perfect complexion lies in high-tech, multi-use formulas that help to improve the appearance of your skin. CC DULL CORRECT is a versatile, illuminating formula that works to:

- 1) automatically correct lack of radiance, thanks to the concealing action of its violet pigments and the luminous finish of its mineral pearls,
- 2) even out skin tone and blur imperfections with its encapsulated pigments.

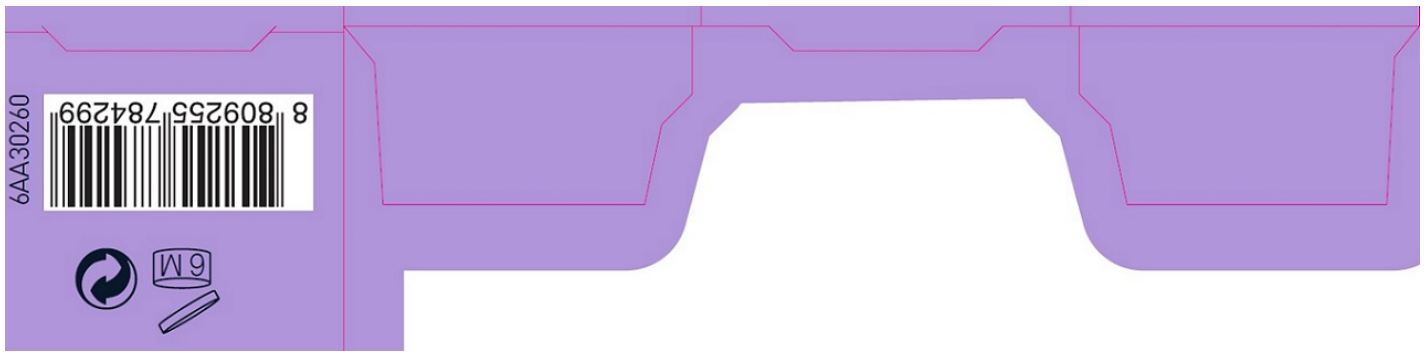
The dullness of the complexion can be intensified by external aggressors that the skin is exposed to every day, such as pollution, fine particles, UV rays, stress or a hectic lifestyle.

CC DULL CORRECT is enriched with an extract of Licorice, which is known for its brightening and antioxidant properties. Formulated with light-reflecting micro-pearls, CC DULL CORRECT helps to immediately restore a natural complexion radiance and enhance skin's beauty. Enriched with Centella asiatica, CC DULL CORRECT works to soothe and moisturize the skin while enhancing the complexion. The violet-tinted formula adjusts to your skin tone and immediately helps to conceal dull and tired complexions thanks to its color-correcting effect. Complexion looks revived, and is visibly more beautiful and radiant.

[Apply a fine layer to the face, like a day cream or makeup base. Blend until it adjusts perfectly to your skin tone.] Avoid contact with the eyes. Tested under dermatological supervision.

Non-comedogenic.

www.erborian.com
Made in South Korea
M&L - 108 rue de Richelieu - Paris - France



ERBORIAN CC DULL CORRECT SPF25

octinoxate, octisalate, titanium dioxide, zinc oxide cream

Product Information

Product Type	HUMAN OTC DRUG	Item Code (Source)	NDC:10345-914
Route of Administration	TOPICAL		

Active Ingredient/Active Moiety

Ingredient Name	Basis of Strength	Strength
OCTINOXATE (UNII: 4Y5P7MUD51) (OCTINOXATE - UNII:4Y5P7MUD51)	OCTINOXATE	60 mg in 1 mL
OCTISALATE (UNII: 4X49Y0596W) (OCTISALATE - UNII:4X49Y0596W)	OCTISALATE	20 mg in 1 mL
TITANIUM DIOXIDE (UNII: 15FIX9V2JP) (TITANIUM DIOXIDE - UNII:15FIX9V2JP)	TITANIUM DIOXIDE	47 mg in 1 mL
ZINC OXIDE (UNII: SOI2LOH54Z) (ZINC CATION - UNII:13S1S8SF37)	ZINC CATION	38.4 mg in 1 mL

Inactive Ingredients

Ingredient Name	Strength
WATER (UNII: 059QF0KO0R)	
CYCLOMETHICONE (UNII: NMQ347994Z)	
MICA (UNII: V8A1AW0880)	
DIPROPYLENE GLYCOL (UNII: E107L85C40)	
GLYCERIN (UNII: PDC6A3C0OX)	
PEG-10 DIMETHICONE (600 CST) (UNII: 8PR7V1SVM0)	
METHYL TRIMETHICONE (UNII: S73ZQI0GXM)	
ULTRAMARINE BLUE (UNII: I39WR998BI)	
DIMETHICONE (UNII: 92RU3N3Y1O)	
BUTYLENE GLYCOL (UNII: 3XUS85K0RA)	
DISTEARDIMONIUM HECTORITE (UNII: X687XDK09L)	
FERRIC OXIDE YELLOW (UNII: EX438O2MRT)	
MAGNESIUM SULFATE, UNSPECIFIED FORM (UNII: DE08037SAB)	
CENTELLA ASIATICA (UNII: 7M867G6T1U)	
GLYCYRRHIZA GLABRA (UNII: 2788Z9758H)	
TALC (UNII: 7SEV7J4R1U)	
ALUMINUM HYDROXIDE (UNII: 5QB0T2IUN0)	
TRIHYDROXYSTEARIN (UNII: 06YD7896S3)	
METHICONE (20 CST) (UNII: 6777U11MKT)	
PALMITIC ACID (UNII: 2V16EO95H1)	

STEARIC ACID (UNII: 4ELV7Z65AP)	
SILICA DIMETHYL SILYLATE (UNII: EU2PSP0G0W)	
.ALPHA.-TOCOPHEROL ACETATE (UNII: 9E8X80D2L0)	
ETHYLHEXYLGLYCERIN (UNII: 147D247K3P)	
STANNIC OXIDE (UNII: KM7N50LOS6)	
PHENOXYETHANOL (UNII: HIE492ZZ3T)	
.ALPHA.-HEXYLCINNAMALDEHYDE (UNII: 7X6O37OK2I)	
ISOMETHYL-.ALPHA.-IONONE (UNII: 9XP4LC555B)	
GERANIOL (UNII: L837108USY)	
EUGENOL (UNII: 3T8H1794QW)	
FERRIC OXIDE RED (UNII: 1K09F3G675)	
FERROSFERRIC OXIDE (UNII: XM0M87F357)	

Packaging

#	Item Code	Package Description	Marketing Start Date	Marketing End Date
1	NDC:10345-914-15	1 in 1 BOX	05/27/2019	
1		15 mL in 1 TUBE; Type 0: Not a Combination Product		
2	NDC:10345-914-45	1 in 1 BOX	05/27/2019	
2		45 mL in 1 TUBE; Type 0: Not a Combination Product		

Marketing Information

Marketing Category	Application Number or Monograph Citation	Marketing Start Date	Marketing End Date
OTC Monograph Drug	M020	05/27/2019	

Labeler - LABORATOIRES M&L (262533623)

Revised: 12/2023

LABORATOIRES M&L