

# **CALCIUM GLUCONATE - calcium gluconate injection, solution**

## **Hikma Pharmaceuticals USA Inc.**

-----

### **HIGHLIGHTS OF PRESCRIBING INFORMATION**

**These highlights do not include all the information needed to use CALCIUM GLUCONATE INJECTION safely and effectively. See full prescribing information for CALCIUM GLUCONATE INJECTION.**

**CALCIUM GLUCONATE injection, for intravenous use**  
**Initial U.S. Approval: 1941**

### **INDICATIONS AND USAGE**

- Calcium Gluconate Injection is a form of calcium indicated for pediatric and adult patients for the treatment of acute symptomatic hypocalcemia. (1)
- Limitations of Use: The safety of Calcium Gluconate Injection for long term use has not been established. (1)

### **DOSAGE AND ADMINISTRATION**

- Contains 100 mg of calcium gluconate per mL which contains 9.3 mg (0.465 mEq) of elemental calcium (2.1)
- Administer intravenously (bolus or continuous infusion) via a secure intravenous line (2.1)
- See Full Prescribing Information (FPI) for dilution instructions, administration rates, and appropriate monitoring (2.1)
- Individualize the dose within the recommended range in adults and pediatric patients depending on the severity of symptoms of hypocalcemia, the serum calcium level, and the acuity of onset of hypocalcemia. See Table 1 in the FPI for dosing recommendations in mg of calcium gluconate for neonates, pediatric and adult patients. (2.2)
- Measure serum calcium during intermittent infusions every 4 to 6 hours and during continuous infusion every 1 to 4 hours. (2.3)
- Calcium Gluconate Injection is not physically compatible with fluids containing phosphate or bicarbonate. Precipitation may result if mixed. See FPI for all drug incompatibilities. (2.5)
- Supplied in a single-dose vial.

### **DOSAGE FORMS AND STRENGTHS**

- Injection: (3)
- Single-dose vial: 5,000 mg per 50 mL (100 mg per mL)

### **CONTRAINDICATIONS**

- Hypercalcemia (4)
- Neonates (28 days of age or younger) receiving ceftriaxone (4)

### **WARNINGS AND PRECAUTIONS**

- *Arrhythmias with Concomitant Cardiac Glycoside Use* If concomitant therapy is necessary, Calcium Gluconate Injection should be given slowly in small amounts and close ECG monitoring is recommended (5.1)
- *End-Organ Damage due to Intravascular Ceftriaxone-Calcium Precipitates* Concurrent use of intravenous ceftriaxone may cause life-threatening precipitates. Cases of fatal outcomes in neonates have occurred. (4, 5.2)
- *Tissue Necrosis and Calcinosis* Calcinosis cutis can occur with or without extravasation of Calcium Gluconate Injection. Tissue necrosis, ulceration, and secondary infection are the most serious complications. If extravasation occurs or clinical manifestations of calcinosis cutis are noted, immediately discontinue intravenous administration at that site and treat as needed. (5.3)
- *Hypotension, Bradycardia, and Cardiac Arrhythmias with Rapid Administration* To avoid adverse reactions that may follow rapid intravenous administration, Calcium Gluconate Injection should be diluted with 5% dextrose or normal saline and infused slowly, with careful ECG monitoring for cardiac arrhythmias. (5.4)
- *Aluminum Toxicity* This product contains aluminum, up to 400 mcg per liter, that may be toxic. (5.5)

### **ADVERSE REACTIONS**

The most common adverse events with Calcium Gluconate Injection are local soft tissue inflammation and necrosis, calcinosis cutis and calcification that are related to extravasation. Other adverse events include vasodilation, decreased blood pressure, bradycardia, cardiac arrhythmia, syncope, and cardiac arrest. (6)

**To report SUSPECTED ADVERSE REACTIONS, contact Hikma Pharmaceuticals USA Inc. at 1-877-845-0689 or FDA at 1-800-FDA-1088 or [www.fda.gov/medwatch](http://www.fda.gov/medwatch).**

----- **DRUG INTERACTIONS** -----

- *Cardiac Glycoside*: Synergistic arrhythmias may occur if calcium and cardiac glycosides are administered together. (7.1)
- *Calcium Channel Blockers*: Administration of calcium may reduce the response. (7.2)
- *Drugs that may cause hypercalcemia* Vitamin D, vitamin A, thiazide diuretics, estrogen, calcipotriene and teriparatide administration may cause hypercalcemia. Monitor plasma calcium concentrations in patients taking these drugs concurrently. (7.3)

----- **USE IN SPECIFIC POPULATIONS** -----

- *Geriatric use*: Dosing in elderly patients should be cautious, usually starting at the low end of the dosage range. (8.5)
- *Renal impairment* Initiate with the lower limit of the dosage range and monitor serum calcium levels every 4 hours. (8.6, 2.4)

**See 17 for PATIENT COUNSELING INFORMATION.**

**Revised: 9/2023**

---

**FULL PRESCRIBING INFORMATION: CONTENTS\***

**1 INDICATIONS & USAGE**

**2 DOSAGE & ADMINISTRATION**

- 2.1 Important Administration Instructions
- 2.2 Recommended Dosage
- 2.3 Serum Calcium Monitoring
- 2.4 Dosage in Renal Impairment
- 2.5 Drug Incompatibilities

**3 DOSAGE FORMS & STRENGTHS**

**4 CONTRAINDICATIONS**

**5 WARNINGS AND PRECAUTIONS**

- 5.1 Arrhythmias with Concomitant Cardiac Glycoside Use
- 5.2 End-Organ Damage due to Intravascular Ceftriaxone-Calcium Precipitates
- 5.3 Tissue Necrosis and Calcinosis
- 5.4 Hypotension, Bradycardia, and Cardiac Arrhythmias with Rapid Administration
- 5.5 Aluminum Toxicity

**6 ADVERSE REACTIONS**

**7 DRUG INTERACTIONS**

- 7.1 Cardiac Glycosides
- 7.2 Calcium Channel Blockers
- 7.3 Drugs that may cause Hypercalcemia

**8 USE IN SPECIFIC POPULATIONS**

- 8.1 Pregnancy
- 8.2 Lactation
- 8.4 Pediatric Use
- 8.5 Geriatric Use
- 8.6 Renal Impairment
- 8.7 Hepatic Impairment

## **10 OVERDOSAGE**

## **11 DESCRIPTION**

## **12 CLINICAL PHARMACOLOGY**

12.1 Mechanism of Action

12.3 Pharmacokinetics

## **13 NONCLINICAL TOXICOLOGY**

13.1 Carcinogenesis & Mutagenesis & Impairment Of Fertility

## **16 HOW SUPPLIED/STORAGE AND HANDLING**

## **17 PATIENT COUNSELING INFORMATION**

\* Sections or subsections omitted from the full prescribing information are not listed.

---

## **FULL PRESCRIBING INFORMATION**

### **1 INDICATIONS & USAGE**

Calcium Gluconate Injection is indicated for pediatric and adult patients for the treatment of acute symptomatic hypocalcemia.

#### Limitations of Use

The safety of Calcium Gluconate Injection for long term use has not been established.

### **2 DOSAGE & ADMINISTRATION**

#### **2.1 Important Administration Instructions**

- Calcium Gluconate Injection contains 100 mg of calcium gluconate per mL which contains 9.3 mg (i.e., 0.465 mEq) of elemental calcium.
- Dilute Calcium Gluconate Injection prior to use in 5% dextrose or normal saline and assess for potential drug or IV fluid incompatibilities [see *Dosage and Administration (2.5)*].
- Inspect Calcium Gluconate Injection visually prior to administration. The solution should appear clear and colorless to slightly yellow. Do not administer if there is particulate matter or discoloration.
- Use the diluted solution immediately after preparation.
- Administer Calcium Gluconate Injection intravenously via a secure intravenous line to avoid calcinosis cutis and tissue necrosis [see *Warnings and Precautions (5.3)*].
- Administer Calcium Gluconate Injection by bolus administration or continuous infusion:

#### **For bolus intravenous administration:**

• Dilute the dose [see *Dosage and Administration (2.2)*] of Calcium Gluconate Injection in 5% dextrose or normal saline to a concentration of 10-50 mg/mL prior to administration. Administer the dose slowly and DO NOT exceed an infusion rate of 200 mg/minute in adults or 100 mg/minute in pediatric patients, including neonates. Monitor patients, vitals and electrocardiograph (ECG) during administration [see *Warnings and Precautions (5.4)*].

#### **For continuous intravenous infusion:**

- Dilute Calcium Gluconate Injection in 5% dextrose or normal saline to a concentration of 5.8-10 mg/mL prior to administration. Administer at the rate recommended in Table 1 [see *Dosage and Administration (2.2)*] and monitor patients, vitals, calcium and ECG during the infusion [see *Warnings and Precautions (5.4)*].
- Calcium Gluconate Injection is supplied in single-dose vials.

## 2.2 Recommended Dosage

Individualize the dose of Calcium Gluconate Injection within the recommended range depending on the severity of symptoms of hypocalcemia, the serum calcium level, and the acuity of onset of hypocalcemia.

Table 1 provides dosing recommendations for Calcium Gluconate Injection in mg of calcium gluconate for neonates, pediatric and adult patients.

**Table 1. Dosing Recommendations in mg of Calcium Gluconate for Neonate, Pediatric, and Adult Patients**

Patient Population	Initial Dose	Subsequent Doses (if needed)	
		Bolus	Continuous Infusion
<b>Neonate (<math>\leq 1</math> month)</b>	100 - 200 mg/kg	100 - 200 mg/kg every 6 hours	Initiate at 17-33 mg/kg/hour
<b>Pediatric (<math>&gt; 1</math> month to <math>&lt; 17</math> years)</b>	29 - 60 mg/kg	29 - 60 mg/kg every 6 hours	Initiate at 8-13 mg/kg/hour
<b>Adult</b>	1000 - 2000 mg	1000 - 2000 mg every 6 hours	Initiate at 5.4 - 21.5 mg/kg/hour
For bolus administration, DO NOT exceed an infusion rate of: <ul style="list-style-type: none"> <li>• 200 mg/minute in adult patients</li> <li>• 100 mg/minute in pediatric patients</li> </ul> For continuous infusions, adjust rate as needed based on serum calcium levels			

## 2.3 Serum Calcium Monitoring

Measure serum calcium every 4 to 6 hours during intermittent infusions with Calcium Gluconate Injection and measure serum calcium every 1 to 4 hours during continuous infusion.

## 2.4 Dosage in Renal Impairment

For patients with renal impairment, initiate Calcium Gluconate Injection at the lowest dose of the recommended dose ranges for all age groups and monitor serum calcium levels every 4 hours.

## 2.5 Drug Incompatibilities

- Do not mix Calcium Gluconate Injection with ceftriaxone. Concurrent use of intravenous ceftriaxone and Calcium Gluconate Injection can lead to the formation of ceftriaxone-calcium precipitates. Concomitant use of ceftriaxone and intravenous calcium-containing products is contraindicated in neonates (28 days of age or younger)

[see *Contraindications (4)*]. In patients older than 28 days of age, ceftriaxone and calcium-containing products may be administered sequentially, provided the infusion lines are thoroughly flushed between infusions with a compatible fluid. Ceftriaxone must not be administered simultaneously with intravenous calcium-containing solutions via a Y-site in any age group [see *Warnings and Precautions (5.2)*, *Drug Interactions (7.3)*].

- Do not mix Calcium Gluconate Injection with fluids containing bicarbonate or phosphate. Calcium Gluconate Injection is not physically compatible with fluids containing phosphate or bicarbonate. Precipitation may result if mixed.
- Do not mix Calcium Gluconate Injection with minocycline injection. Calcium complexes minocycline rendering it inactive.

### **3 DOSAGE FORMS & STRENGTHS**

Calcium Gluconate Injection, USP is a clear, colorless to slightly yellow, solution free from visible particles available in the following:

- Single dose vial: 5,000 mg per 50 mL (100 mg per mL)

Each mL of Calcium Gluconate Injection, USP contains 9.3 mg (0.465 mEq) of elemental calcium.

### **4 CONTRAINDICATIONS**

Calcium Gluconate Injection is contraindicated in:

- Hypercalcemia
- Neonates (28 days of age or younger) receiving ceftriaxone [see *Warnings and Precautions (5.2)*]

### **5 WARNINGS AND PRECAUTIONS**

#### **5.1 Arrhythmias with Concomitant Cardiac Glycoside Use**

Cardiac arrhythmias may occur if calcium and cardiac glycosides are administered together. Hypercalcemia increases the risk of digoxin toxicity. Administration of Calcium Gluconate Injection should be avoided in patients receiving cardiac glycosides. If concomitant therapy is necessary, Calcium Gluconate Injection should be given slowly in small amounts and with close ECG monitoring [see *Drug Interactions (7.1)*].

#### **5.2 End-Organ Damage due to Intravascular Ceftriaxone-Calcium Precipitates**

Concomitant use of ceftriaxone and Calcium Gluconate Injection is contraindicated in neonates (28 days of age or younger) due to cases of fatal outcomes in neonates in which a crystalline material was observed in the lungs and kidneys at autopsy after ceftriaxone and calcium were administered simultaneously through the same intravenous line. Concomitant administration can lead to the formation of ceftriaxone-calcium precipitates that may act as emboli, resulting in vascular spasm or infarction [see *Contraindications (4)*].

In patients older than 28 days of age, ceftriaxone and Calcium Gluconate Injection may be administered sequentially, provided the infusion lines are thoroughly flushed between infusions with a compatible fluid. Do not administer Ceftriaxone simultaneously with Calcium Gluconate Injection via a Y-site in any age group.

### **5.3 Tissue Necrosis and Calcinosis**

Intravenous administration of Calcium Gluconate Injection and local trauma may result in calcinosis cutis due to transient increase in local calcium concentration. Calcinosis cutis can occur with or without extravasation of Calcium Gluconate Injection, is characterized by abnormal dermal deposits of calcium salts, and clinically manifests as papules, plaques, or nodules that may be associated with erythema, swelling, or induration. Tissue necrosis, ulceration, and secondary infection are the most serious complications. If extravasation occurs or clinical manifestations of calcinosis cutis are noted, immediately discontinue intravenous administration at that site and treat as needed.

### **5.4 Hypotension, Bradycardia, and Cardiac Arrhythmias with Rapid Administration**

Rapid injection of Calcium Gluconate Injection may cause vasodilation, decreased blood pressure, bradycardia, cardiac arrhythmias, syncope and cardiac arrest. To avoid adverse reactions that may follow rapid intravenous administration, Calcium Gluconate Injection should be diluted with 5% dextrose or normal saline and infused slowly. If rapid intravenous bolus of Calcium Gluconate Injection is required, the rate of intravenous administration should not exceed 200 mg/minute in adults and 100 mg/minute in pediatric patients and ECG monitoring during administration is recommended [see *Dosage and Administration (2.1)*].

### **5.5 Aluminum Toxicity**

Calcium Gluconate Injection contains aluminum, up to 400 mcg per liter, that may be toxic. Aluminum may reach toxic levels with prolonged parenteral administration if kidney function is impaired. Premature neonates are particularly at risk because their kidneys are immature, and they require large amounts of calcium and phosphate solutions, which contain aluminum. Research indicates that patients with impaired kidney function, including premature neonates, who receive parenteral levels of aluminum at greater than 4 mcg/kg/day to 5 mcg/kg/day accumulate aluminum levels associated with central nervous system and bone toxicity. Tissue loading may occur at even lower rates of administration.

## **6 ADVERSE REACTIONS**

The following serious adverse reactions are also described elsewhere in the labeling:

- Arrhythmias with Concomitant Cardiac Glycoside Use [see *Warnings and Precautions (5.1)*]
- End-Organ Damage due to Intravascular Ceftriaxone-Calcium Precipitates [see *Warnings and Precautions (5.2)*]
- Tissue Necrosis and Calcinosis [see *Warnings and Precautions (5.3)*]
- Hypotension, Bradycardia, and Cardiac Arrhythmias [see *Warnings and Precautions (5.4)*]
- Aluminum toxicity [see *Warnings and Precautions (5.5)*]

The following adverse reactions associated with the use of calcium gluconate were identified in the literature. Because these reactions are reported voluntarily from a

population of uncertain size, it is not always possible to estimate their frequency reliably or to establish a causal relationship to drug exposure.

**Cardiovascular:** Vasodilation, decreased blood pressure, bradycardia, cardiac arrhythmia, syncope, cardiac arrest

**Administration site reactions:** Local soft tissue inflammation, local necrosis, calcinosis cutis and calcification due to extravasation

## 7 DRUG INTERACTIONS

### 7.1 Cardiac Glycosides

Hypercalcemia increases the risk of digoxin toxicity, while digoxin may be therapeutically ineffective in the presence of hypocalcemia. Synergistic arrhythmias may occur if calcium and cardiac glycosides are administered together. Avoid administration of Calcium Gluconate Injection in patients receiving cardiac glycosides; if considered necessary, administer Calcium Gluconate Injection slowly in small amounts and monitor ECG closely during administration.

### 7.2 Calcium Channel Blockers

Administration of calcium may reduce the response to calcium channel blockers.

### 7.3 Drugs that may cause Hypercalcemia

Vitamin D, vitamin A, thiazide diuretics, estrogen, calcipotriene and teriparatide administration may cause hypercalcemia. Monitor plasma calcium concentrations in patients taking these drugs concurrently.

## 8 USE IN SPECIFIC POPULATIONS

### 8.1 Pregnancy

#### Risk summary

Limited available data with Calcium Gluconate Injection use in pregnant women are insufficient to inform a drug associated risk of adverse developmental outcomes. There are risks to the mother and the fetus associated with hypocalcemia in pregnancy [see *Clinical Considerations*].

The estimated background risk of major birth defects and miscarriage for the indicated population is unknown. In the U.S. general population, the estimated background risk of major birth defects and miscarriage in clinically recognized pregnancies is 2-4% and 15-20%, respectively.

#### Clinical Considerations

##### *Disease-associated maternal risk*

Maternal hypocalcemia can result in an increased rate of spontaneous abortion, premature and dysfunctional labor, and possibly preeclampsia.

##### *Fetal/Neonatal adverse reactions*

Infants born to mothers with hypocalcemia can have associated fetal and neonatal hyperparathyroidism, which in turn can cause fetal and neonatal skeletal

demineralization, subperiosteal bone resorption, osteitis fibrosa cystica and neonatal seizures. Infants born to mothers with hypocalcemia should be carefully monitored for signs of hypocalcemia or hypercalcemia, including neuromuscular irritability, apnea, cyanosis and cardiac rhythm disorders.

## **8.2 Lactation**

### **Risk summary**

Calcium is present in human milk as a natural component of human milk. It is not known whether intravenous administration of Calcium Gluconate Injection can alter calcium concentration in human milk. There are no data on the effects of Calcium Gluconate Injection on the breastfed infant, or on milk production. The developmental and health benefits of breastfeeding should be considered along with the mother's clinical need for Calcium Gluconate Injection and any potential adverse effects on the breastfed child from Calcium Gluconate Injection or from the underlying maternal condition.

## **8.4 Pediatric Use**

The safety and effectiveness of Calcium Gluconate Injection have been established in pediatric patients for the treatment of acute, symptomatic hypocalcemia.

Pediatric approval for Calcium Gluconate Injection, including doses, is not based on adequate and well-controlled clinical studies. Safety and dosing recommendations in pediatric patients are based on published literature and clinical experience [*see Dosage and Administration (2.2)*].

Concomitant use of ceftriaxone and Calcium Gluconate Injection is contraindicated in neonates (28 days of age or younger) due to reports of fatal outcomes associated with the presence of lung and kidney ceftriaxone-calcium precipitates. In patients older than 28 days of age, ceftriaxone and Calcium Gluconate Injection may be administered sequentially, provided the infusion lines are thoroughly flushed between infusions with a compatible fluid [*see Contraindications (4) and Warnings and Precautions (5.2)*]. This product contains up to 400 mcg/L aluminum which may be toxic, particularly for premature neonates due to immature renal function. Parenteral administration of aluminum greater than 4 to 5 mcg/kg/day is associated with central nervous system and bone toxicity [*see Warnings and Precautions (5.5)*].

## **8.5 Geriatric Use**

In general dose selection for an elderly patient should start at the lowest dose of the recommended dose range, reflecting the greater frequency of decreased hepatic, renal, or cardiac function, and of concomitant disease or other drug therapy.

## **8.6 Renal Impairment**

For patients with renal impairment, initiate Calcium Gluconate Injection at the lowest dose of the recommended dose ranges across all age groups. Monitor serum calcium levels every 4 hours [*see Dosage and Administration (2.4)*].

## **8.7 Hepatic Impairment**



Hepatic function does not impact the availability of ionized calcium after calcium gluconate intravenous administration. Dose adjustment in hepatically impaired patients may not be necessary.

## 10 OVERDOSAGE

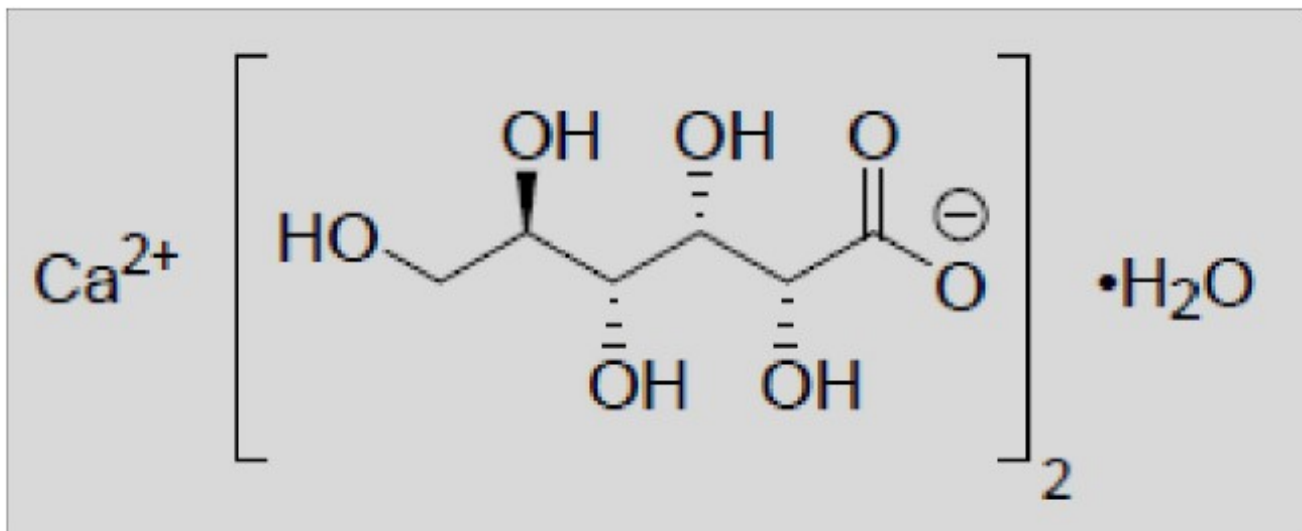
Overdosage of Calcium Gluconate Injection may result in hypercalcemia. Symptoms of hypercalcemia typically develop when the total serum calcium concentration is  $\geq 12$  mg/dL. Neurologic symptoms include depression, weakness, fatigue, and confusion at lower levels, with patients experiencing hallucinations, disorientation, hypotonicity, seizures, and coma. Effects on the kidney include diminished ability to concentrate urine and diuresis.

If overdose of Calcium Gluconate Injection occurs immediately discontinue administration and provide supportive treatments to restore intravascular volume as well as promote calcium excretion in the urine if necessary.

## 11 DESCRIPTION

Calcium Gluconate Injection, USP is a clear, colorless to slightly yellow, sterile, preservative-free, nonpyrogenic, supersaturated solution of calcium gluconate, a form of calcium, for intravenous use.

Calcium Gluconate is calcium D-gluconate (1:2) monohydrate. The structural formula is:



Molecular formula:  $\text{C}_{12}\text{H}_{22}\text{CaO}_{14} \cdot \text{H}_2\text{O}$

Molecular weight: 448.39

Solubility in water: 3.5 g/100 mL at 25°C

Calcium Gluconate Injection, USP is available as 5,000 mg per 50 mL (100 mg per mL) in a single-dose vial.

Each mL of Calcium Gluconate Injection, USP contains 100 mg of calcium gluconate (equivalent to 94 mg of calcium gluconate and 4.5 mg of calcium saccharate tetrahydrate), hydrochloric acid and/or sodium hydroxide for pH adjustment (6.0 to 8.2) and water for injection, q.s. It contains no antimicrobial agent. Each mL of Calcium Gluconate Injection, USP contains 9.3 mg (0.465 mEq) of elemental calcium.

## **12 CLINICAL PHARMACOLOGY**

### **12.1 Mechanism of Action**

Intravenous administration of calcium gluconate increases serum ionized calcium level. Calcium gluconate dissociates into ionized calcium in plasma. Ionized calcium and gluconate are normal constituents of body fluids.

### **12.3 Pharmacokinetics**

#### Absorption

Calcium Gluconate Injection is 100% bioavailable following intravenous injection.

#### Metabolism

Calcium itself does not undergo direct metabolism. The release of ionized calcium from intravenous administration of calcium gluconate is direct and does not seem to be affected by the first pass through the liver.

#### Distribution

Calcium in the body is distributed mainly in skeleton (99%). Only 1% of the total body calcium is distributed within the extracellular fluids and soft tissues. About 50% of total serum calcium is in the ionized form and represents the biologically active part. 8% to 10% serum calcium is bound to organic and inorganic acid and approximately 40% is protein-bound (primarily to albumin).

#### Elimination

Studies have shown a relationship between urinary calcium excretion and the intravenous administration of calcium gluconate, with a significant increase in urinary calcium excretion observed after the intravenous administration of calcium gluconate.

## **13 NONCLINICAL TOXICOLOGY**

### **13.1 Carcinogenesis & Mutagenesis & Impairment Of Fertility**

Long-term studies in animals have not been conducted to evaluate the carcinogenic potential of Calcium Gluconate Injection. Calcium gluconate was not mutagenic with or without metabolic activation in the Ames test with *Salmonella typhimurium* (strains TA-1535, TA-1537, and TA-1538) or *Saccharomyces cerevisiae* (Strain D4). Fertility studies in animals have not been conducted with calcium gluconate administered by the intravenous route.

## 16 HOW SUPPLIED/STORAGE AND HANDLING

Calcium Gluconate Injection, USP is a clear, colorless to slightly yellow solution free from visible particles supplied as follows:

NDC	Strength/Vial Size (mL)
0143-9184-01	5,000 mg calcium gluconate per 50 mL (100 mg per mL), in a 50 mL plastic, single-dose vial.
0143-9184-25	5,000 mg calcium gluconate per 50 mL (100 mg per mL), in a 50 mL plastic, single-dose vial, packaged in a carton of 25.

Store at 20° to 25°C (68° to 77°F) [see USP Controlled Room Temperature]. Do not freeze.

Preservative Free. Discard any unused portion in the single-dose vial immediately. The diluted solution must be used immediately.

**NOTE:** Supersaturated solutions are prone to precipitation. The precipitate, if present, may be dissolved by warming the vial to 60° to 80°C, with occasional agitation, until the solution becomes clear. Shake vigorously. Allow to cool to room temperature before dispensing. Use injection only if clear immediately prior to use.

## 17 PATIENT COUNSELING INFORMATION

- Advise the patient that the risks associated with infusion including local tissue inflammation, local necrosis and calcinosis. [see *Warnings and Precautions (5.3)*].

### Manufactured for:

Nivagen Pharmaceuticals, Inc.  
Sacramento, CA 95827 USA

### Distributed by:

Hikma Pharmaceuticals USA Inc.  
Berkley Heights, NJ 07922

Rev. 09/2023

## PACKAGE LABEL.PRINCIPAL DISPLAY PANEL

NDC 0143-9184-01  
Calcium Gluconate Injection, USP  
Vial Label

NDC 0143-9184-01 Rx Only

# Calcium Gluconate Injection, USP

**5,000 mg per 50 mL**

**(100 mg per mL)**

**Preservative free.**

For Intravenous Use  
50 mL Single Dose Vial

Sterile.

**Each mL contains:** Calcium gluconate 94 mg; calcium saccharate (tetrahydrate) 4.5 mg; water for Injection, q.s. Hydrochloric acid and/or sodium hydroxide may have been added for pH adjustment.

**0.465 mEq/mL 0.276 mOsmol/mL**  
Contains no more than 400 mcg/L of aluminum.

**Usual dosage:** See package insert.

**Supersaturated solutions are prone to precipitation. See insert for further details.**

**STORE AT: 20° to 25°C (68° to 77°F)**  
[see USP Controlled Room Temperature].  
Discard unused portion. Do not freeze.  
Use only if solution is clear and seal intact.  
The container closure is not made with natural rubber latex.

**Batch No.:**

**Exp. Date:**

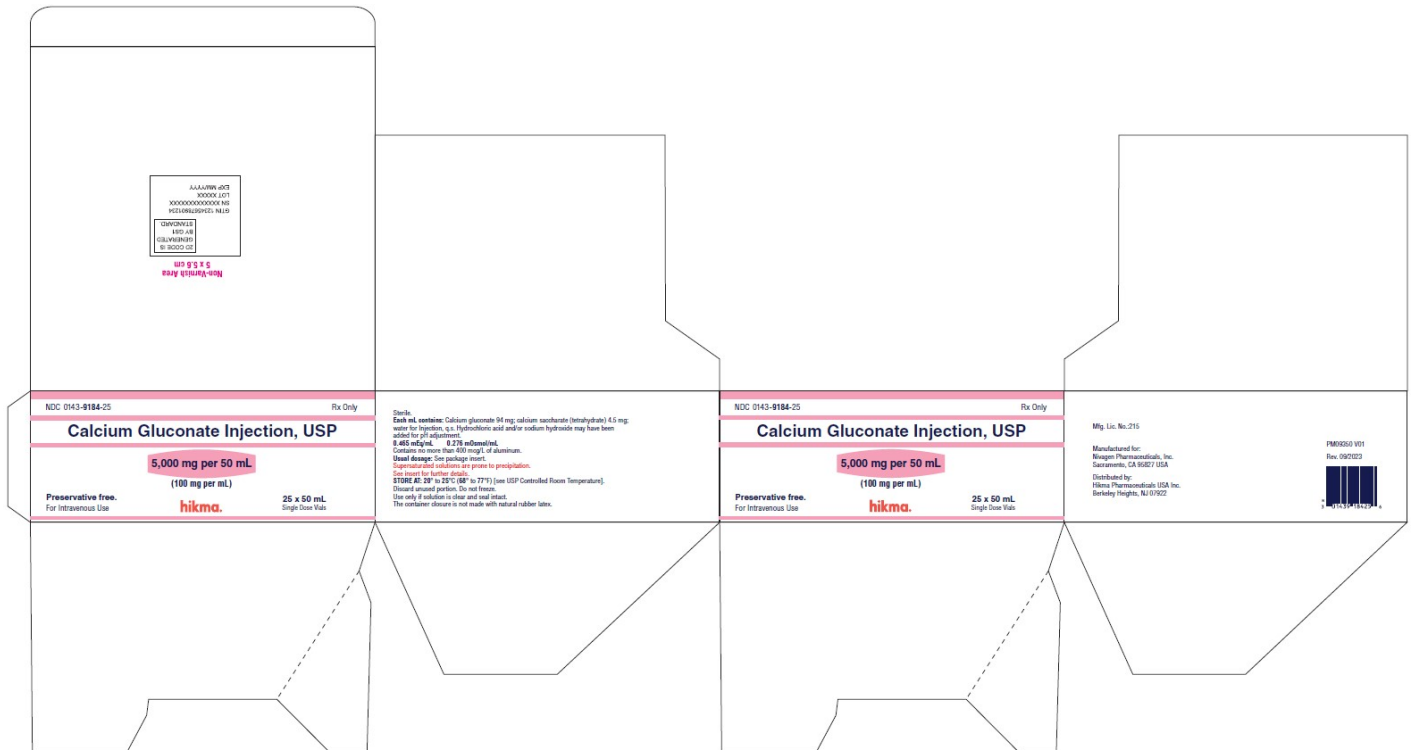
Mfg. Lic. No.: 215

Manufactured for:  
Nivagen Pharmaceuticals, Inc.  
Sacramento, CA 95827 USA



Distributed by:  
Hikma Pharmaceuticals USA, Inc.  
Berkeley Heights, NJ 07922  
PM09349 V01  
Rev. 09/2023

## NDC 0143-9184-25 Calcium Gluconate Injection, USP Carton Label



# CALCIUM GLUCONATE

calcium gluconate injection, solution

## Product Information

<b>Product Type</b>	HUMAN PRESCRIPTION DRUG	<b>Item Code (Source)</b>	NDC:0143-9184
<b>Route of Administration</b>	INTRAVENOUS		

## Active Ingredient/Active Moiety

Ingredient Name	Basis of Strength	Strength
<b>CALCIUM GLUCONATE MONOHYDRATE</b> (UNII: CZN0MI5R31) (CALCIUM CATION - UNII:2M83C4R6ZB)	CALCIUM GLUCONATE MONOHYDRATE	98 mg in 1 mL

## Inactive Ingredients

Ingredient Name	Strength
<b>HYDROCHLORIC ACID</b> (UNII: QTT17582CB)	
<b>SODIUM HYDROXIDE</b> (UNII: 55X04QC32I)	
<b>CALCIUM SACCHARATE</b> (UNII: 6AP9J91K4V)	

## Packaging

#	Item Code	Package Description	Marketing Start Date	Marketing End Date
1	NDC:0143-9184-25	25 in 1 CARTON	11/24/2023	
1	NDC:0143-9184-01	50 mL in 1 VIAL; Type 0: Not a Combination Product		

## Marketing Information

Marketing Category	Application Number or Monograph Citation	Marketing Start Date	Marketing End Date
ANDA	ANDA213071	11/24/2023	

**Labeler** - Hikma Pharmaceuticals USA Inc. (001230762)

**Registrant** - Nivagen Pharmaceuticals, Inc. (052032418)

Revised: 9/2023

Hikma Pharmaceuticals USA Inc.