

BUTALBITAL, ACETAMINOPHEN, AND CAFFEINE- butalbital, acetaminophen, and caffeine tablet

Preferred Pharmaceuticals Inc.

Butalbital, Acetaminophen, and Caffeine Tablets USP

Content Updated: August 2014

Rx only

174241-5

Hepatotoxicity

Acetaminophen has been associated with cases of acute liver failure, at times resulting in liver transplant and death. Most of the cases of liver injury are associated with the use of acetaminophen at doses that exceed 4000 milligrams per day, and often involve more than one acetaminophen-containing product.

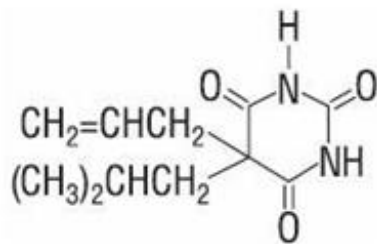
DESCRIPTION

Butalbital, acetaminophen, and caffeine tablets USP is supplied in tablet form for oral administration.

Each tablet contains the following active ingredients:

butalbital USP.....50 mg
acetaminophen USP.....325 mg
caffeine USP.....40 mg

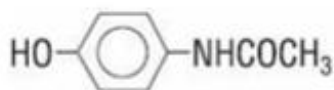
Butalbital (5-allyl-5-isobutylbarbituric acid) is a short- to intermediate-acting barbiturate. It has the following structural formula:



$C_{11}H_{16}N_2O_3$

Mol. wt. 224.26

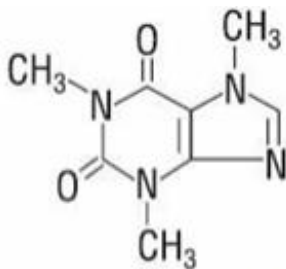
Acetaminophen (4'-hydroxyacetanilide) is a non-opiate, non-salicylate analgesic and antipyretic. It has the following structural formula:



$C_8H_9NO_2$

Mol. wt. 151.16

Caffeine (1,3,7-trimethylxanthine) is a central nervous system stimulant. It has the following structural formula:



$C_8H_{10}N_4O_2$

Mol. wt. 194.19

Inactive Ingredients: croscopvidone, magnesium stearate, microcrystalline cellulose, povidone, pregelatinized starch, and stearic acid.

CLINICAL PHARMACOLOGY

Butalbital, acetaminophen, and caffeine tablets USP is intended as a treatment for tension headache.

It consists of a fixed combination of butalbital, acetaminophen, and caffeine. The role each component plays in the relief of the complex of symptoms known as tension headache is incompletely understood.

Pharmacokinetics

The behavior of the individual components is described below.

Butalbital

Butalbital is well absorbed from the gastrointestinal tract and is expected to distribute to most tissues in the body. Barbiturates in general may appear in breast milk and readily cross the placental barrier. They are bound to plasma and tissue proteins to a varying degree and binding increases directly as a function of lipid solubility.

Elimination of butalbital is primarily via the kidney (59 to 88% of the dose) as unchanged drug or metabolites. The plasma half-life is about 35 hours. Urinary excretion products include parent drug (about 3.6% of the dose), 5-isobutyl-5-(2,3-dihydroxypropyl) barbituric acid (about 24% of the dose), 5-allyl-5(3-hydroxy-2-methyl-1-propyl) barbituric acid (about 4.8% of the dose), products with the barbituric acid ring hydrolyzed with excretion of urea (about 14% of the dose), as well as unidentified materials. Of the material excreted in the urine, 32% is conjugated.

The *in vitro* plasma protein binding of butalbital is 45% over the concentration range of 0.5 to 20 mcg/mL. This falls within the range of plasma protein binding (20 to 45%) reported with other barbiturates such as phenobarbital, pentobarbital, and secobarbital sodium. The plasma-to-blood concentration ratio was almost unity, indicating that there is no preferential distribution of butalbital into either plasma or blood cells [see **OVERDOSAGE** for toxicity information].

Acetaminophen

Acetaminophen is rapidly absorbed from the gastrointestinal tract and is distributed throughout most body tissues. The plasma half-life is 1.25 to 3 hours, but may be increased by liver damage and following overdose. Elimination of acetaminophen is principally by liver metabolism (conjugation) and subsequent renal excretion of metabolites. Approximately 85% of an oral dose appears in the urine within 24 hours of administration, most as the glucuronide conjugate, with small amounts of other conjugates and unchanged drug [see **OVERDOSAGE** for toxicity information].

Caffeine

Like most xanthines, caffeine is rapidly absorbed and distributed in all body tissues and fluids, including the CNS, fetal tissues, and breast milk.

Caffeine is cleared through metabolism and excretion in the urine. The plasma half-life is about 3 hours. Hepatic biotransformation prior to excretion results in about equal amounts of 1-methylxanthine and 1-methyluric acid. Of the 70% of the dose that is recovered in the urine, only 3% is unchanged drug [see **OVERDOSAGE** for toxicity information].

INDICATIONS AND USAGE

Butalbital, acetaminophen, and caffeine tablets USP is indicated for the relief of the symptom complex of tension (or muscle contraction) headache.

Evidence supporting the efficacy and safety of butalbital, acetaminophen, and caffeine tablets USP in the treatment of multiple recurrent headaches is unavailable. Caution in this regard is required because butalbital is habit-forming and potentially abusable.

CONTRAINDICATIONS

Butalbital, acetaminophen, and caffeine tablets USP is contraindicated under the following conditions:

- Hypersensitivity or intolerance to any component of this product.
- Patients with porphyria.

WARNINGS

Butalbital is habit-forming and potentially abusable. Consequently, the extended use of butalbital, acetaminophen, and caffeine tablets USP is not recommended.

Hepatotoxicity

Acetaminophen has been associated with cases of acute liver failure, at times resulting in liver transplant and death. Most of the cases of liver injury are associated with the use of acetaminophen at doses that exceed 4000 milligrams per day, and often involve more than one acetaminophen-containing product. The excessive intake of acetaminophen may be intentional to cause self-harm or unintentional as patients attempt to obtain more pain relief or unknowingly take other acetaminophen-containing products.

The risk of acute liver failure is higher in individuals with underlying liver disease and in individuals who ingest alcohol while taking acetaminophen.

Instruct patients to look for acetaminophen or APAP on package labels and not to use more than one product that contains acetaminophen. Instruct patients to seek medical attention immediately upon ingestion of more than 4000 milligrams of acetaminophen per day, even if they feel well.

Serious Skin Reactions

Rarely, acetaminophen may cause serious skin reactions such as acute generalized exanthematous pustulosis (AGEP), Stevens-Johnson Syndrome (SJS), and toxic epidermal necrolysis (TEN), which can be fatal. Patients should be informed about the signs of serious skin reactions, and use of the drug should be discontinued at the first appearance of skin rash or any other sign of hypersensitivity.

Hypersensitivity/Anaphylaxis

There have been post-marketing reports of hypersensitivity and anaphylaxis associated with use of acetaminophen. Clinical signs included swelling of the face, mouth, and throat, respiratory distress, urticaria, rash, pruritus, and vomiting. There were infrequent reports of life-threatening anaphylaxis requiring emergency medical attention. Instruct patients to discontinue butalbital, acetaminophen, and caffeine tablets USP immediately and seek medical care if they experience these symptoms. Do not prescribe butalbital, acetaminophen, and caffeine tablets USP for patients with acetaminophen allergy.

PRECAUTIONS

General

Butalbital, acetaminophen, and caffeine tablets should be prescribed with caution in certain special-risk patients, such as the elderly or debilitated, and those with severe impairment of renal or hepatic function, or acute abdominal conditions.

Information for Patients/Caregivers

- Do not take butalbital, acetaminophen, and caffeine tablets USP if you are allergic to any of its ingredients.
- If you develop signs of allergy such as a rash or difficulty breathing, stop taking butalbital, acetaminophen, and caffeine tablets USP and contact your healthcare provider immediately.
- Do not take more than 4000 milligrams of acetaminophen per day. Call your doctor if you took more than the recommended dose.
- Butalbital, acetaminophen, and caffeine tablets USP may impair mental and/or physical abilities required for the performance of potentially hazardous tasks such as driving a car or operating machinery. Such tasks should be avoided while taking this product.
- Alcohol and other CNS depressants may produce an additive CNS depression when taken with butalbital, acetaminophen, and caffeine tablets USP, and should be avoided.
- Butalbital may be habit-forming. Patients should take the drug only for as long as it is prescribed, in the amounts prescribed, and no more frequently than prescribed.
- For information on use in geriatric patients, see **PRECAUTIONS, Geriatric Use**.

Laboratory Tests

In patients with severe hepatic or renal disease, effects of therapy should be monitored with serial liver and/or renal function tests.

Drug Interactions

The CNS effects of butalbital may be enhanced by monoamine oxidase (MAO) inhibitors.

Butalbital, acetaminophen, and caffeine may enhance the effects of: other narcotic analgesics, alcohol, general anesthetics, tranquilizers such as chlorthalidone, sedative-hypnotics, or other CNS depressants, causing increased CNS depression.

Drug/Laboratory Test Interactions

Acetaminophen may produce false-positive test results for urinary 5-hydroxyindoleacetic acid.

Carcinogenesis, Mutagenesis, Impairment of Fertility

No adequate studies have been conducted in animals to determine whether acetaminophen or butalbital have a potential for carcinogenesis, mutagenesis or impairment of fertility.

Pregnancy

Teratogenic Effects

Pregnancy Category C: Animal reproduction studies have not been conducted with butalbital, acetaminophen, and caffeine tablets USP. It is also not known whether butalbital, acetaminophen, and caffeine can cause fetal harm when administered to a pregnant woman or can affect reproduction capacity. This product should be given to a pregnant woman only when clearly needed.

Nonteratogenic Effects

Withdrawal seizures were reported in a two-day-old male infant whose mother had taken a butalbital-containing drug during the last two months of pregnancy. Butalbital was found in the infant's serum. The infant was given phenobarbital 5 mg/kg, which was tapered without further seizure or other withdrawal symptoms.

Nursing Mothers

Caffeine, barbiturates, and acetaminophen are excreted in breast milk in small amounts, but the significance of their effects on nursing infants is not known. Because of potential for serious adverse reactions in nursing infants from butalbital, acetaminophen, and caffeine, a decision should be made whether to discontinue nursing or to discontinue the drug, taking into account the importance of the drug to the mother.

Pediatric Use

Safety and effectiveness in pediatric patients below the age of 12 have not been established.

Geriatric Use

Clinical studies of butalbital, acetaminophen, and caffeine tablets USP did not include sufficient numbers of subjects aged 65 and over to determine whether they respond differently from younger subjects. Other reported clinical experience has not identified differences in responses between the elderly and younger patients. In general, dose selection for an elderly patient should be cautious, usually starting at the low end of the dosing range, reflecting the greater frequency of decreased hepatic, renal, or cardiac function, and of concomitant disease or other drug therapy.

Butalbital is known to be substantially excreted by the kidney, and the risk of toxic reactions to this drug may be greater in patients with impaired renal function. Because elderly patients are more likely to have decreased renal function, care should be taken in dose selection, and it may be useful to monitor renal function.

ADVERSE REACTIONS

Frequently Observed

The most frequently reported adverse reactions are drowsiness, lightheadedness, dizziness, sedation, shortness of breath, nausea, vomiting, abdominal pain, and intoxicated feeling.

Infrequently Observed

All adverse events tabulated below are classified as infrequent.

Central Nervous System: headache, shaky feeling, tingling, agitation, fainting, fatigue, heavy eyelids, high energy, hot spells, numbness, sluggishness, seizure. Mental confusion, excitement, or depression can also occur due to intolerance, particularly in elderly or debilitated patients, or due to overdosage of butalbital.

Autonomic Nervous System: dry mouth, hyperhidrosis.

Gastrointestinal: difficulty swallowing, heartburn, flatulence, constipation.

Cardiovascular: tachycardia.

Musculoskeletal: leg pain, muscle fatigue.

Genitourinary: diuresis.

Miscellaneous: pruritus, fever, earache, nasal congestion, tinnitus, euphoria, allergic reactions.

Several cases of dermatological reactions, including toxic epidermal necrolysis and erythema

multiforme, have been reported.

The following adverse drug events may be borne in mind as potential effects of the components of this product. Potential effects of high dosage are listed in the *OVERDOSAGE* section.

Acetaminophen: allergic reactions, rash, thrombocytopenia, agranulocytosis.

Caffeine: cardiac stimulation, irritability, tremor, dependence, nephrotoxicity, hyperglycemia.

DRUG ABUSE AND DEPENDENCE

Abuse and Dependence

Butalbital

Barbiturates may be habit-forming: Tolerance, psychological dependence, and physical dependence may occur especially following prolonged use of high doses of barbiturates. The average daily dose for the barbiturate addict is usually about 1500 mg. As tolerance to barbiturates develops, the amount needed to maintain the same level of intoxication increases; tolerance to a fatal dosage, however, does not increase more than two-fold. As this occurs, the margin between an intoxication dosage and fatal dosage becomes smaller. The lethal dose of a barbiturate is far less if alcohol is also ingested. Major withdrawal symptoms (convulsions and delirium) may occur within 16 hours and last up to 5 days after abrupt cessation of these drugs. Intensity of withdrawal symptoms gradually declines over a period of approximately 15 days. Treatment of barbiturate dependence consists of cautious and gradual withdrawal of the drug. Barbiturate-dependent patients can be withdrawn by using a number of different withdrawal regimens. One method involves initiating treatment at the patient's regular dosage level and gradually decreasing the daily dosage as tolerated by the patient.

OVERDOSAGE

Following an acute overdosage of butalbital, acetaminophen, and caffeine, toxicity may result from the barbiturate or the acetaminophen. Toxicity due to caffeine is less likely, due to the relatively small amounts in this formulation.

Signs and Symptoms

Toxicity from **barbiturate** poisoning include drowsiness, confusion, and coma; respiratory depression; hypotension; and hypovolemic shock.

In **acetaminophen** overdosage: dose-dependent, potentially fatal hepatic necrosis is the most serious adverse effect. Renal tubular necroses, hypoglycemic coma, and coagulation defects may also occur. Early symptoms following a potentially hepatotoxic overdose may include: nausea, vomiting, diaphoresis, and general malaise. Clinical and laboratory evidence of hepatic toxicity may not be apparent until 48 to 72 hours post-ingestion.

Acute **caffeine** poisoning may cause insomnia, restlessness, tremor, and delirium, tachycardia and extrasystoles.

Treatment

A single or multiple drug overdose with this combination product is a potentially lethal polydrug overdose, and consultation with a regional poison control center is recommended. Immediate treatment includes support of cardiorespiratory function and measures to reduce drug absorption.

Oxygen, intravenous fluids, vasopressors, and other supportive measures should be employed as indicated. Assisted or controlled ventilation should also be considered.

Gastric decontamination with activated charcoal should be administered just prior to N-acetylcysteine (NAC) to decrease systemic absorption if acetaminophen ingestion is known or suspected to have occurred within a few hours of presentation. Serum acetaminophen levels should be obtained

immediately if the patient presents 4 hours or more after ingestion to assess potential risk of hepatotoxicity; acetaminophen levels drawn less than 4 hours post-ingestion may be misleading. To obtain the best possible outcome, NAC should be administered as soon as possible where impending or evolving liver injury is suspected. Intravenous NAC may be administered when circumstances preclude oral administration.

Vigorous supportive therapy is required in severe intoxication. Procedures to limit the continuing absorption of the drug must be readily performed since the hepatic injury is dose dependent and occurs early in the course of intoxication.

DOSAGE AND ADMINISTRATION

One or 2 tablets every 4 hours as needed. Total daily dosage should not exceed 6 tablets.

Extended and repeated use of butalbital, acetaminophen, and caffeine tablets USP is not recommended because of the potential for physical dependence.

HOW SUPPLIED

Butalbital, acetaminophen, and caffeine tablets USP

Containing 50 mg butalbital, 325 mg acetaminophen, and 40 mg caffeine. Available as white, round uncoated tablets, engraved **WATSON** on one side and **3369** on other side.

Bottles of 20 - 68788-9287-2

Bottles of 30 - 68788-9287-3

Bottles of 60 - 68788-9287-6

Bottles of 90 - 68788-9287-9

Bottles of 100 - 68788-9287-1

Bottles of 120 - 68788-9287-8

Store below 30°C (86°F); dispense in a tight container.

Keep out of reach of children.

Rx only

For all medical inquiries contact:

ACTAVIS

Medical Communications

Parsippany, NJ 07054

1-800-272-5525

Manufactured By:

Actavis Laboratories FL, Inc.

Fort Lauderdale, FL 33314 USA

Distributed By:

Actavis Pharma, Inc.

Parsippany, NJ 07054 USA

Content Updated: August 2014

174241-5

Repackaged by: Preferred Pharmaceuticals Inc.

PRINCIPAL DISPLAY PANEL

Butalbital, Acetaminophen, and Caffeine Tablets USP

**Butalbital,
Acetaminophen &
Caffeine Tablets,
USP 50/325/40mg**

Generic for: Fioricet

Each tablet contains: Acetaminophen, USP 325mg / Butalbital, USP 50mg / Caffeine, USP 40mg

Pkg Size: Exp Date
Lot#: Batch#
Ins.
Mfg: Actavis Pharma, Inc.
Prod#:

Warning
Store below 30°C (86°F); keep this and all medication out of the reach of children. Tablet is round, white, imprinted with WATSON; 3369

PREFERRED
Pharmaceuticals, Inc.
The Physician's Solution. Anaheim, Ca

CAUTION: Federal law PROHIBITS transfer of this drug to any person other than the patient for whom it was prescribed.

Butalbital, Acetaminophen & Caffeine Tablets, USP 50/325/40mg
Qty: Ins:
Lot#: Bat#:

Butalbital, Acetaminophen & Caffeine Tablets, USP 50/325/40mg
Qty: Ins:
Lot#: Bat#:

Butalbital, Acetaminophen & Caffeine Tablets, USP 50/325/40mg
Qty:
Insurance NDC:

Butalbital, Acetaminophen & Caffeine Tablets, USP 50/325/40mg
Qty: Ins:
Lot#: Bat#:

Directions English

May cause drowsiness. Do not drink alcoholic beverages while taking this medicine. Take _____ tablet(s) every _____ hours as needed for pain.

Instrucciones Espanol:

Puede causar somnolencia. No tome bebidas alcoholicas mientras toma esta medicina. Toma _____ tableta(s) cada _____ horas segun lo necesitado para el

LOT

Log

Chart

Billing

Patient

BUTALBITAL, ACETAMINOPHEN, AND CAFFEINE

butalbital, acetaminophen, and caffeine tablet

Product Information

Product Type	HUMAN PRESCRIPTION DRUG	Item Code (Source)	NDC:68788-9287(NDC:0591-3369)
Route of Administration	ORAL		

Active Ingredient/Active Moiety

Ingredient Name	Basis of Strength	Strength
BUTALBITAL (UNII: KHS0AZ4JVK) (BUTALBITAL - UNII:KHS0AZ4JVK)	BUTALBITAL	50 mg
ACETAMINOPHEN (UNII: 362O9ITL9D) (ACETAMINOPHEN - UNII:362O9ITL9D)	ACETAMINOPHEN	325 mg
CAFFEINE (UNII: 3G6A5W338E) (CAFFEINE - UNII:3G6A5W338E)	CAFFEINE	40 mg

Inactive Ingredients

Ingredient Name	Strength
CROSPVIDONE (15 MPA.S AT 5%) (UNII: 68401960MK)	
MAGNESIUM STEARATE (UNII: 70097M6I30)	
MICROCRYSTALLINE CELLULOSE (UNII: OP1R32D61U)	
POVIDONE, UNSPECIFIED (UNII: FZ989GH94E)	
STARCH, CORN (UNII: O8232NY3SJ)	
STEARIC ACID (UNII: 4ELV7Z65AP)	

Product Characteristics

Color	WHITE	Score	no score
Shape	ROUND	Size	11mm
Flavor		Imprint Code	WATSON;3369

Contains**Packaging**

#	Item Code	Package Description	Marketing Start Date	Marketing End Date
1	NDC:68788-9287-2	20 in 1 BOTTLE; Type 0: Not a Combination Product	05/08/2015	
2	NDC:68788-9287-3	30 in 1 BOTTLE; Type 0: Not a Combination Product	05/08/2015	
3	NDC:68788-9287-6	60 in 1 BOTTLE; Type 0: Not a Combination Product	05/08/2015	
4	NDC:68788-9287-9	90 in 1 BOTTLE; Type 0: Not a Combination Product	05/08/2015	
5	NDC:68788-9287-1	100 in 1 BOTTLE; Type 0: Not a Combination Product	05/08/2015	
6	NDC:68788-9287-8	120 in 1 BOTTLE; Type 0: Not a Combination Product	05/08/2015	

Marketing Information

Marketing Category	Application Number or Monograph Citation	Marketing Start Date	Marketing End Date
ANDA	ANDA088616	05/08/2015	

Labeler - Preferred Pharmaceuticals Inc. (791119022)**Registrant** - Preferred Pharmaceuticals Inc. (791119022)**Establishment**

Name	Address	ID/FEI	Business Operations
Preferred Pharmaceuticals Inc.		791119022	REPACK(68788-9287)

Revised: 4/2018

Preferred Pharmaceuticals Inc.