

IDARUBICIN HYDROCHLORIDE- idarubicin hydrochloride injection, solution
Meitheal Pharmaceuticals Inc.

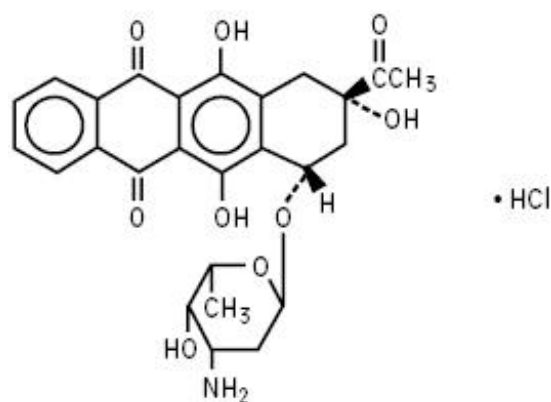
IDArubicin
Hydrochloride Injection, USP
For Intravenous Use Only
meitheal®
Rx Only

WARNINGS

- 1. Idarubicin Hydrochloride Injection should be given slowly into a freely flowing intravenous infusion. It must never be given intramuscularly or subcutaneously. Severe local tissue necrosis can occur if there is extravasation during administration.**
- 2. As is the case with other anthracyclines the use of Idarubicin Hydrochloride Injection can cause myocardial toxicity leading to congestive heart failure. Cardiac toxicity is more common in patients who have received prior anthracyclines or who have pre-existing cardiac disease.**
- 3. As is usual with antileukemic agents, severe myelosuppression occurs when Idarubicin Hydrochloride Injection is used at effective therapeutic doses.**
- 4. It is recommended that Idarubicin Hydrochloride Injection be administered only under the supervision of a physician who is experienced in leukemia chemotherapy and in facilities with laboratory and supportive resources adequate to monitor drug tolerance and protect and maintain a patient compromised by drug toxicity. The physician and institution must be capable of responding rapidly and completely to severe hemorrhagic conditions and/or overwhelming infection.**
- 5. Dosage should be reduced in patients with impaired hepatic or renal function (see DOSAGE AND ADMINISTRATION).**

DESCRIPTION

Idarubicin Hydrochloride Injection, USP contains idarubicin hydrochloride, USP and is a sterile, semi-synthetic, preservative-free solution (PFS) antineoplastic anthracycline for intravenous use. Chemically, idarubicin hydrochloride, USP is 5, 12-Naphthacenedione, 9-acetyl-7-[(3-amino-2,3,6-trideoxy- α -L-lyxo-hexopyranosyl)oxy]-7,8,9,10-tetrahydro-6,9,11-trihydroxyhydrochloride, (7S-*cis*). The structural formula is as follows:



$C_{26}H_{27}NO_9 \cdot HCl$ M.W. 533.95

Idarubicin Hydrochloride Injection, USP is a sterile, clear, orange-red, isotonic parenteral preservative-free solution, available in 5 mL (5 mg), 10 mL (10 mg) and 20 mL (20 mg) single-dose-only vials.

Each mL contains idarubicin hydrochloride USP, 1 mg (equivalent to 0.93 mg idarubicin free base) and the following inactive ingredients: glycerin USP, 25 mg and q.s. water for injection, USP. Hydrochloric acid and/or sodium hydroxide is used to adjust pH to a target of 3.5.

CLINICAL PHARMACOLOGY

Mechanism of Action

Idarubicin hydrochloride is a DNA-intercalating analog of daunorubicin which has an inhibitory effect on nucleic acid synthesis and interacts with the enzyme topoisomerase II. The absence of a methoxy group at position 4 of the anthracycline structure gives the compound a high lipophilicity which results in an increased rate of cellular uptake compared with other anthracyclines.

Pharmacokinetics

General Pharmacokinetics

Pharmacokinetic studies have been performed in adult leukemia patients with normal renal and hepatic function following intravenous administration of 10 to 12 mg/m² of idarubicin daily for 3 to 4 days as a single agent or combined with cytarabine. The plasma concentrations of idarubicin are best described by a two or three compartment open model. The elimination rate of idarubicin from plasma is slow with an estimated mean terminal half-life of 22 hours (range, 4 to 48 hours) when used as a single agent and 20 hours (range, 7 to 38 hours) when used in combination with cytarabine. The elimination of the primary active metabolite, idarubicinol, is considerably slower than that of the parent drug with an estimated mean terminal half-life that exceeds 45 hours; hence, its plasma levels are sustained for a period greater than 8 days.

Distribution

The disposition profile shows a rapid distributive phase with a very high volume of distribution presumably reflecting extensive tissue binding. Studies of cellular (nucleated blood and bone marrow cells) drug concentrations in leukemia patients have shown that

peak cellular idarubicin concentrations are reached a few minutes after injection. Concentrations of idarubicin and idarubicinol in nucleated blood and bone marrow cells are more than a hundred times the plasma concentrations. Idarubicin disappearance rates in plasma and cells were comparable with a terminal half-life of about 15 hours. The terminal half-life of idarubicinol in cells was about 72 hours. The extent of drug and metabolite accumulation predicted in leukemia patients for Days 2 and 3 of dosing, based on the mean plasma levels and half-life obtained after the first dose, is 1.7- and 2.3-fold, respectively, and suggests no change in kinetics following a daily $\times 3$ regimen. The percentages of idarubicin and idarubicinol bound to human plasma proteins averaged 97% and 94%, respectively, at concentrations similar to maximum plasma levels obtained in the pharmacokinetic studies. The binding is concentration independent. The plasma clearance is twice the expected hepatic plasma flow indicating extensive extrahepatic metabolism.

Metabolism

The primary active metabolite formed is idarubicinol. As idarubicinol has cytotoxic activity, it presumably contributes to the effects of idarubicin.

Elimination

The drug is eliminated predominately by biliary and to a lesser extent by renal excretion, mostly in the form of idarubicinol.

Pharmacokinetics in Special Populations

Pediatric Patients

Idarubicin studies in pediatric leukemia patients, at doses of 4.2 to 13.3 mg/m²/day $\times 3$, suggest dose independent kinetics. There is no difference between the half-lives of the drug following daily $\times 3$ or weekly $\times 3$ administration. Cerebrospinal fluid (CSF) levels of idarubicin and idarubicinol were measured in pediatric leukemia patients treated intravenously. Idarubicin was detected in 2 of 21 CSF samples (0.14 and 1.57 ng/mL), while idarubicinol was detected in 20 of these 21 CSF samples obtained 18 to 30 hours after dosing (mean = 0.51 ng/mL; range, 0.22 to 1.05 ng/mL). The clinical relevance of these findings is unknown.

Hepatic and Renal Impairment

The pharmacokinetics of idarubicin have not been evaluated in leukemia patients with hepatic impairment. It is expected that in patients with moderate or severe hepatic dysfunction, the metabolism of idarubicin may be impaired and lead to higher systemic drug levels. The disposition of idarubicin may be also affected by renal impairment. Therefore, a dose reduction should be considered in patients with hepatic and/or renal impairment (see **DOSAGE AND ADMINISTRATION**).

Drug-Drug Interactions

No formal drug interaction studies have been performed.

CLINICAL STUDIES

Four prospective randomized studies, three U.S. and one Italian, have been conducted to compare the efficacy and safety of idarubicin (IDR) to that of daunorubicin (DNR), each in combination with cytarabine as induction therapy in previously untreated adult patients with acute myeloid leukemia (AML). These data are summarized in the following table and demonstrate significantly greater complete remission rates for the IDR regimen in two of the three U.S. studies and significantly longer overall survival for the IDR regimen in two of the three U.S. studies.

	Induction ^a Regimen Dose in mg/m ² -Daily x 3 Days		Complete Remission Rate, All Pts Randomized		Median Survival (Days) All Pts Randomized	
	<u>IDR</u>	<u>DNR</u>	<u>IDR</u>	<u>DNR</u>	<u>IDR</u>	<u>DNR</u>
<u>U.S. (IND Studies)</u>						
1. MSKCC (Age ≤ 60 years)	12 ^b	50 ^b	51/65* (78%)	38/65 (58%)	508*	435
2. SEG (Age ≥ 15 years)	12 ^c	45 ^c	76/111* (69%)	65/119 (55%)	328	277
3. U.S. Multicenter (Age ≥ 18 years)	13 ^c	45 ^c	68/101 (67%)	66/113 (58%)	393*	281
<u>Foreign (non-IND study)</u>						
GIMEMA (Age ≥ 55 years)	12 ^c	45 ^c	49/124 (40%)	49/125 (39%)	87	169

*Overall p < 0.05, unadjusted for prognostic factors or multiple endpoints

Abbreviations: MSKCC=Memorial Sloan Kettering Cancer Center; SEG= Southeastern Cancer Study Group; GIMEMA= Gruppo Italiano Malattie Ematologiche Maligne dell' Adulto; IDR=Idarubicin; DNR=Daunorubicin; Pts=Patients; IND=Investigational New Drug

^aPatients who had persistent leukemia after the first induction course received a second course

^bCytarabine 25 mg/m² bolus IV followed by 200 mg/m² daily x 5 days by continuous infusion

^cCytarabine 100 mg/m² daily x 7 days by continuous infusion

There is no consensus regarding optional regimens to be used for consolidation; however, the following consolidation regimens were used in U.S. controlled trials. Patients received the same anthracycline for consolidation as was used for induction.

Studies 1 and 3 utilized 2 courses of consolidation therapy consisting of idarubicin 12 or 13 mg/m² daily for 2 days, respectively (or DNR 50 or 45 mg/m² daily for 2 days), and cytarabine, either 25 mg/m² by IV bolus followed by 200 mg/m² daily by continuous infusion for 4 days (Study 1), or 100 mg/m² daily for 5 days by continuous infusion (Study 3). A rest period of 4 to 6 weeks is recommended prior to initiation of consolidation and between the courses. Hematologic recovery is mandatory prior to initiation of each consolidation course.

Study 2 utilized 3 consolidation courses, administered at intervals of 21 days or upon hematologic recovery. Each course consisted of idarubicin 15 mg/m² IV for 1 dose (or DNR 50 mg/m² IV for 1 dose), cytarabine 100 mg/m² every 12 hours for 10 doses and 6-thioguanine 100 mg/m² orally for 10 doses. If severe myelosuppression occurred, subsequent courses were given with 25% reduction in the doses of all drugs. In addition, this study included 4 courses of maintenance therapy (2 days of the same anthracycline as was used in induction and 5 days of cytarabine).

Toxicities and duration of aplasia were similar during induction on the 2 arms in the U.S. studies except for an increase in mucositis on the IDR arm in one study. During consolidation, duration of aplasia on the IDR arm was longer in all three studies and mucositis was more frequent in two studies. During consolidation, transfusion requirements were higher on the IDR arm in the two studies in which they were tabulated, and patients on the IDR arm in Study 3 spent more days on IV antibiotics (Study 3 used a higher dose of idarubicin).

The benefit of consolidation and maintenance therapy in prolonging the duration of remission and survival is not proven.

Intensive maintenance with idarubicin is not recommended in view of the considerable toxicity (including deaths in remission) experienced by patients during the maintenance phase of Study 2.

A higher induction death rate was noted in patients on the IDR arm in the Italian trial. Since this was not noted in patients of similar age in the U.S. trials, one may speculate that it was due to a difference in the level of supportive care.

INDICATIONS AND USAGE

Idarubicin Hydrochloride Injection in combination with other approved antileukemic drugs is indicated for the treatment of acute myeloid leukemia (AML) in adults. This includes French-American-British (FAB) classifications M1 through M7.

WARNINGS

Idarubicin is intended for administration under the supervision of a physician who is experienced in leukemia chemotherapy.

Idarubicin is a potent bone marrow suppressant. Idarubicin should not be given to patients with pre-existing bone marrow suppression induced by previous drug therapy or radiotherapy unless the benefit warrants the risk.

Severe myelosuppression will occur in all patients given a therapeutic dose of this agent for induction, consolidation or maintenance. Careful hematologic monitoring is required. Deaths due to infection and/or bleeding have been reported during the period of severe

myelosuppression. Facilities with laboratory and supportive resources adequate to monitor drug tolerability and protect and maintain a patient compromised by drug toxicity should be available. It must be possible to treat rapidly and completely a severe hemorrhagic condition and/or a severe infection.

Pre-existing heart disease and previous therapy with anthracyclines at high cumulative doses or other potentially cardiotoxic agents are co-factors for increased risk of idarubicin-induced cardiac toxicity and the benefit to risk ratio of idarubicin therapy in such patients should be weighed before starting treatment with idarubicin.

Myocardial toxicity as manifested by potentially fatal congestive heart failure, acute life-threatening arrhythmias or other cardiomyopathies may occur following therapy with idarubicin. Appropriate therapeutic measures for the management of congestive heart failure and/or arrhythmias are indicated.

Cardiac function should be carefully monitored during treatment in order to minimize the risk of cardiac toxicity of the type described for other anthracycline compounds. The risk of such myocardial toxicity may be higher following concomitant or previous radiation to the mediastinal-pericardial area or in patients with anemia, bone marrow depression, infections, leukemic pericarditis and/or myocarditis, active or dormant cardiovascular disease, previous therapy with other anthracyclines or anthracenediones, and concomitant use of drugs with the ability to suppress cardiac contractility or cardiotoxic drugs (e.g., trastuzumab, cyclophosphamide and paclitaxel). Due to the increased risk of cardiotoxicity, avoid concomitant use of Idarubicin Hydrochloride Injection until the cardiotoxic agent has been discontinued for at least 5 half-lives, and specifically avoid Idarubicin Hydrochloride Injection for up to 7 months after stopping trastuzumab.

While there are no reliable means for predicting congestive heart failure, cardiomyopathy induced by anthracyclines is usually associated with a decrease of the left ventricular ejection fraction (LVEF) from pretreatment baseline values.

Since hepatic and/or renal function impairment can affect the disposition of idarubicin, liver and kidney function should be evaluated with conventional clinical laboratory tests (using serum bilirubin and serum creatinine as indicators) prior to and during treatment. In a number of Phase III clinical trials, treatment was not given if bilirubin and/or creatinine serum levels exceeded 2 mg%. However, in one Phase III trial, patients with bilirubin levels between 2.6 and 5 mg% received the anthracycline with a 50% reduction in dose. Dose reduction of idarubicin should be considered if the bilirubin and/or creatinine levels are above the normal range (see **DOSAGE AND ADMINISTRATION**).

Pregnancy

Idarubicin was embryotoxic and teratogenic in the rat at a dose of 1.2 mg/m²/day or one tenth the human dose, which was nontoxic to dams. Idarubicin was embryotoxic but not teratogenic in the rabbit even at a dose of 2.4 mg/m²/day or two tenths the human dose, which was toxic to dams. There is no conclusive information about idarubicin adversely affecting human fertility or causing teratogenesis. There has been one report of a fetal fatality after maternal exposure to idarubicin during the second trimester.

There are no adequate and well-controlled studies in pregnant women. Idarubicin Hydrochloride Injection should be used during pregnancy only if the potential benefit justifies the potential risk to the fetus. If Idarubicin Hydrochloride Injection is to be used

during pregnancy, or if the patient becomes pregnant during therapy, the patient should be apprised and informed of the potential hazard to the fetus. Women of childbearing potential should be advised to avoid pregnancy. Women of childbearing potential should be advised to use effective contraception during treatment with Idarubicin Hydrochloride Injection and for 6.5 months after the last dose. Men with female partners of childbearing potential should be advised to use effective contraception during treatment with Idarubicin Hydrochloride Injection and for 3.5 months after the last dose. Both men and women should seek advice for fertility preservation before treatment and/or seek genetic counselling after treatment.

PRECAUTIONS

General

Therapy with idarubicin requires close observation of the patient and careful laboratory monitoring. Hyperuricemia secondary to rapid lysis of leukemic cells may be induced. Appropriate measures must be taken to prevent hyperuricemia and to control any systemic infection before beginning therapy.

Extravasation of idarubicin can cause severe local tissue necrosis. Extravasation may occur with or without an accompanying stinging or burning sensation even if blood returns well on aspiration of the infusion needle. If signs or symptoms of extravasation occur the injection or infusion should be terminated immediately and restarted in another vein (see **DOSAGE AND ADMINISTRATION**).

Laboratory Tests

Frequent complete blood counts and monitoring of hepatic and renal function tests are recommended.

Carcinogenesis, Mutagenesis, Impairment of Fertility

Formal long-term carcinogenicity studies have not been conducted with idarubicin. Idarubicin and related compounds have been shown to have mutagenic and carcinogenic properties when tested in experimental models (including bacterial systems, mammalian cells in culture and female Sprague-Dawley rats).

In male dogs given 1.8 mg/m²/day 3 times/week (about one seventh the weekly human dose on a mg/m² basis) for 13 weeks, or 3 times the human dose, testicular atrophy was observed with inhibition of spermatogenesis and sperm maturation with few or no mature sperm. These effects were not readily reversed after a recovery of 8 weeks.

Pregnancy

(See **WARNINGS**).

Nursing Mothers

It is not known whether this drug is excreted in human milk. Because many drugs are excreted in human milk and because of the potential for serious adverse reactions in nursing infants from idarubicin, mothers should discontinue nursing prior to taking this drug and do not breastfeed during treatment and for 14 days after

last dose.

Pediatric Use

Safety and effectiveness in children have not been established.

Geriatric Use

Patients over 60 years of age who were undergoing induction therapy experienced congestive heart failure, serious arrhythmias, chest pain, myocardial infarction, and asymptomatic declines in LVEF more frequently than younger patients (see **ADVERSE REACTIONS**).

ADVERSE REACTIONS

Approximately 550 patients with AML have received idarubicin in combination with cytarabine in controlled clinical trials worldwide. In addition, over 550 patients with acute leukemia have been treated in uncontrolled trials utilizing idarubicin as a single agent or in combination. The table below lists the adverse experiences reported in U.S. Study 2 (see **CLINICAL STUDIES**) and is representative of the experiences in other studies. These adverse experiences constitute all reported or observed experiences, including those not considered to be drug related. Patients undergoing induction therapy for AML are seriously ill due to their disease, are receiving multiple transfusions, and concomitant medications including potentially toxic antibiotics and antifungal agents. The contribution of the study drug to the adverse experience profile is difficult to establish.

Induction Phase	Percentage of Patients	
<u>Adverse Experiences</u>	IDR (N=110)	DNR (N=118)
Infection	95%	97%
Nausea & Vomiting	82%	80%
Hair Loss	77%	72%
Abdominal Cramps/Diarrhea	73%	68%
Hemorrhage	63%	65%
Mucositis	50%	55%
Dermatologic	46%	40%
Mental Status	41%	34%
Pulmonary-Clinical	39%	39%
Fever (not elsewhere classified)	26%	28%
Headache	20%	24%
Cardiac-Clinical	16%	24%
Neurologic-Peripheral Nerves	7%	9%
Pulmonary Allergy	2%	4%
Seizure	4%	5%
Cerebellar	4%	4%

Abbreviations: IDR=Idarubicin; DNR=Daunorubicin

The duration of aplasia and incidence of mucositis were greater on the IDR arm than the DNR arm, especially during consolidation in some U.S. controlled trials (see **CLINICAL STUDIES**).

The following information reflects experience based on U.S. controlled clinical trials.

Myelosuppression

Severe myelosuppression is the major toxicity associated with idarubicin therapy, but this effect of the drug is required in order to eradicate the leukemic clone. During the period of myelosuppression, patients are at risk of developing infection and bleeding which may be life-threatening or fatal.

Gastrointestinal

Nausea and/or vomiting, mucositis, abdominal pain and diarrhea were reported frequently, but were severe (equivalent to WHO Grade 4) in less than 5% of patients. Severe enterocolitis with perforation has been reported rarely. The risk of perforation may be increased by instrumental intervention. The possibility of perforation should be considered in patients who develop severe abdominal pain and appropriate steps for diagnosis and management should be taken.

Dermatologic

Alopecia was reported frequently and dermatologic reactions including generalized rash, urticaria and a bullous erythrodermatous rash of the palms and soles have occurred. The dermatologic reactions were usually attributed to concomitant antibiotic therapy. Local reactions including hives at the injection site have been reported. Recall of skin reaction due to prior radiotherapy has occurred with idarubicin administration.

Hepatic and Renal

Changes in hepatic and renal function tests have been observed. These changes were usually transient and occurred in the setting of sepsis and while patients were receiving potentially hepatotoxic and nephrotoxic antibiotics and antifungal agents. Severe changes in renal function (equivalent to WHO Grade 4) occurred in no more than 1% of patients, while severe changes in hepatic function (equivalent to WHO Grade 4) occurred in less than 5% of patients.

Cardiac

Congestive heart failure (frequently attributed to fluid overload), serious arrhythmias including atrial fibrillation, chest pain, myocardial infarction and asymptomatic declines in LVEF have been reported in patients undergoing induction therapy for AML. Myocardial insufficiency and arrhythmias were usually reversible and occurred in the setting of sepsis, anemia and aggressive intravenous fluid administration. The events were reported more frequently in patients over age 60 years and in those with pre-existing cardiac disease.

To report SUSPECTED ADVERSE REACTIONS, contact Meitheal Pharmaceuticals, Inc. at 1-844-824-8426 or FDA at 1-800-FDA-1088 or www.fda.gov/medwatch.

OVERDOSAGE

There is no known antidote to idarubicin. Two cases of fatal overdosage in patients receiving therapy for AML have been reported. The doses were 135 mg/m² over 3 days and 45 mg/m² of idarubicin and 90 mg/m² of daunorubicin over a three day period.

It is anticipated that overdosage with idarubicin will result in severe and prolonged myelosuppression and possibly in increased severity of gastrointestinal toxicity. Adequate supportive care including platelet transfusions, antibiotics and symptomatic treatment of mucositis is required. The effect of acute overdose on cardiac function is not fully known, but severe arrhythmia occurred in 1 of the 2 patients exposed. It is anticipated that very high doses of idarubicin may cause acute cardiac toxicity and may be associated with a higher incidence of delayed cardiac failure.

Disposition studies with idarubicin in patients undergoing dialysis have not been carried out. The profound multicompartment behavior, extensive extravascular distribution and tissue binding, coupled with the low unbound fraction available in the plasma pool make it unlikely that therapeutic efficacy or toxicity would be altered by conventional peritoneal or hemodialysis.

DOSAGE AND ADMINISTRATION

(See **WARNINGS**)

For induction therapy in adult patients with AML the following dose schedule is recommended:

Idarubicin Hydrochloride Injection 12 mg/m² daily for 3 days by slow (10 to 15 min) intravenous injection in combination with cytarabine. The cytarabine may be given as 100 mg/m² daily by continuous infusion for 7 days or as cytarabine 25 mg/m² intravenous bolus followed by cytarabine 200 mg/m² daily for 5 days continuous infusion. In patients with unequivocal evidence of leukemia after the first induction course, a second course may be administered. Administration of the second course should be delayed in patients who experience severe mucositis, until recovery from this toxicity has occurred, and a dose reduction of 25% is recommended. In patients with hepatic and/or renal impairment, a dose reduction of Idarubicin Hydrochloride Injection should be considered. Idarubicin Hydrochloride Injection should not be administered if the bilirubin level exceeds 5 mg% (see **WARNINGS**).

The benefit of consolidation in prolonging the duration of remissions and survival is not proven. There is no consensus regarding optional regimens to be used for consolidation (see **CLINICAL STUDIES** for doses used in U.S. Clinical studies).

Preparation and Administration Precautions

Caution in handling the solution must be exercised as skin reactions associated with Idarubicin Hydrochloride Injection may occur. Skin accidentally exposed to Idarubicin Hydrochloride Injection should be washed thoroughly with soap and water and if the eyes are involved, standard irrigation techniques should be used immediately. The use of goggles, gloves, and protective gowns is recommended during preparation and administration of the drug.

Care in the administration of Idarubicin Hydrochloride Injection will reduce the chance of

perivenous infiltration. It may also decrease the chance of local reactions such as urticaria and erythematous streaking. During intravenous administration of Idarubicin Hydrochloride Injection extravasation may occur with or without an accompanying stinging or burning sensation even if blood returns well on aspiration of the infusion needle. If any signs or symptoms of extravasation have occurred, the injection or infusion should be immediately terminated and restarted in another vein. If it is known or suspected that subcutaneous extravasation has occurred, it is recommended that intermittent ice packs (1/2 hour immediately, then 1/2 hour 4 times per day for 3 days) be placed over the area of extravasation and that the affected extremity be elevated. Because of the progressive nature of extravasation reactions, the area of injection should be frequently examined and plastic surgery consultation obtained early if there is any sign of a local reaction such as pain, erythema, edema or vesication. If ulceration begins or there is severe persistent pain at the site of extravasation, early wide excision of the involved area should be considered.

Idarubicin Hydrochloride Injection should be administered slowly (over 10 to 15 minutes) into the tubing of a freely running intravenous infusion of Sodium Chloride Injection, USP (0.9%) or 5% Dextrose Injection, USP. The tubing should be attached to a Butterfly needle or other suitable device and inserted preferably into a large vein. Idarubicin Hydrochloride Injection is provided in single dose vials. Discard unused portion.

Incompatibility

Unless specific compatibility data are available, Idarubicin Hydrochloride Injection should not be mixed with other drugs. Precipitation occurs with heparin. Prolonged contact with any solution of an alkaline pH will result in degradation of the drug.

Parenteral drug products should be inspected visually for particulate matter and discoloration prior to administration whenever solution and containers permit.

Handling and Disposal

Procedures for handling and disposal of anticancer drugs should be considered. Several guidelines on this subject have been published.¹⁻⁸ There is no general agreement that all of the procedures recommended in the guidelines are necessary or appropriate.

HOW SUPPLIED

Idarubicin Hydrochloride Injection, USP is a clear, orange-red, isotonic parenteral solution, free from visible particles for intravenous use only and is available as below:

NDC	Idarubicin Hydrochloride Injection, USP (1 mg per mL)	Package Factor
71288- 184 -05	5 mg per 5 mL Single-Dose Vial	1 vial per carton
71288- 185 -10	10 mg per 10 mL Single-Dose Vial	1 vial per carton
71288- 186 -20	20 mg per 20 mL Single-Dose Vial	1 vial per carton

Contains no preservative. Discard unused portion.

Sterile, Nonpyrogenic.

The container closure is not made with natural rubber latex.

Store under refrigeration 2° to 8°C (36° to 46°F). Protect from light. Retain in carton until time of use.

REFERENCES

1. ONS Clinical Practice Committee. Cancer Chemotherapy Guidelines and Recommendations for Practice. Pittsburgh, PA: Oncology Nursing Society. 1999: 32-41.
2. Recommendations for the Safe Handling of Parenteral Antineoplastic Drugs. Washington, DC; Division of Safety, Clinical Center Pharmacy Department and Cancer Nursing Services, National Institutes of Health; 1992. US Department of Health and Human Services, Public Health Service Publication NIH 92-2621.
3. AMA Council on Scientific Affairs. Guidelines for Handling Parenteral Antineoplastics. JAMA. 1985; 253: 1590-1591.
4. National Study Commission on Cytotoxic Exposure - Recommendations for Handling Cytotoxic Agents. 1987. Available from Louis P. Jeffrey, Sc.D., Chairman, National Study Commission on Cytotoxic Exposure, Massachusetts College of Pharmacy and Allied Health Sciences, 179 Longwood Avenue, Boston, MA 02115.
5. Clinical Oncological Society of Australia: Guidelines and Recommendations for Safe Handling of Antineoplastic Agents. Med J Australia. 1983; 1:426-428.
6. Jones RB, Frank R, Mass T. Safe Handling of Chemotherapeutic Agents: A Report from the Mount Sinai Medical Center. CA Cancer J Clin. 1983; 33: 258-263.
7. American Society of Hospital Pharmacists. ASHP Technical Assistance Bulletin on Handling Cytotoxic and Hazardous Drugs. Am J Hosp Pharm. 1990; 47:1033-1049.
8. Controlling Occupational Exposure to Hazardous Drugs (OSHA Work-Practice Guidelines). Am J Health-Syst Pharm. 1996; 53: 1669-1685.

meitheal®

Mfd. for Meitheal Pharmaceuticals

Chicago, IL 60631 (USA)

©2024 Meitheal Pharmaceuticals Inc.

Mfd. by Kindos Pharmaceuticals Co., Ltd.

Chengdu, China 611731

November 2024

LB-780-V1

PRINCIPAL DISPLAY PANEL - Idarubicin Hydrochloride Injection, USP 5 mg per 5 mL Container Label

NDC 71288-184-05

Rx only

Idarubicin Hydrochloride Injection, USP

5 mg per 5 mL

(1 mg per mL)

5 mL Single-Dose Vial

FOR INTRAVENOUS USE ONLY

Sterile, Isotonic Solution

NDC 71288-184-05 Rx only

IDarubicin
Hydrochloride Injection, USP

5 mg per 5 mL
(1 mg per mL)

5 mL Single-Dose Vial
FOR INTRAVENOUS USE ONLY
Sterile, Isotonic Solution

Each mL contains: 1 mg idarubicin hydrochloride, USP, 25 mg glycerin, USP, and water for injection, USP q.s. Hydrochloric acid and/or sodium hydroxide is added for pH adjustment. Contains no preservative, discard unused portion.

Usual Dosage: See Package Insert.

Store under refrigeration, 2° to 8°C (36° to 46°F). Protect from light. Retain in carton until time of use.

WARNING: Severe cellulitis, vesication and tissue necrosis can occur if Idarubicin Hydrochloride Injection, USP is extravasated during administration.

Mfd. for Meitheal Pharmaceuticals
Chicago, IL 60631 (USA)
Made in China

LB-782-V1



(01)00371288184059

Lot:

Exp.:

PRINCIPAL DISPLAY PANEL - Idarubicin Hydrochloride Injection, USP 5 mg per 5 mL Carton

NDC 71288-184-05

Rx only

Idarubicin Hydrochloride Injection, USP

5 mg per 5 mL

(1 mg per mL)

1 x 5 mL Single-Dose Vial

Caution: Cytotoxic Agent

FOR INTRAVENOUS USE ONLY

Sterile, Isotonic Solution



PRINCIPAL DISPLAY PANEL - Idarubicin Hydrochloride Injection, USP 10 mg per 10 mL Container Label

NDC 71288-**185**-10

Rx only

Idarubicin Hydrochloride Injection, USP

10 mg per 10 mL

(1 mg per mL)

10 mL Single-Dose Vial

FOR INTRAVENOUS USE ONLY

Sterile, Isotonic Solution

<p>NDC 71288-185-10 Rx only</p> <p>IDarubicin Hydrochloride Injection, USP</p> <p>10 mg per 10 mL (1 mg per mL)</p> <p>10 mL Single-Dose Vial FOR INTRAVENOUS USE ONLY Sterile, Isotonic Solution</p>	<p>Each mL contains: 1 mg idarubicin hydrochloride, USP, 25 mg glycerin, USP, and water for injection, USP q.s. Hydrochloric acid and/or sodium hydroxide is added for pH adjustment. Contains no preservative, discard unused portion.</p> <p>Usual Dosage: See Package Insert. Store under refrigeration, 2° to 8°C (36° to 46°F). Protect from light. Retain in carton until time of use.</p> <p>WARNING: Severe cellulitis, vesication and tissue necrosis can occur if Idarubicin Hydrochloride Injection, USP is extravasated during administration.</p> <p>Mfd. for Meitheal Pharmaceuticals Chicago, IL 60631 (USA) Made in China ©2024 Meitheal Pharmaceuticals Inc.</p> <p>LB-777-V1</p>  <p>(01)00371288185100</p>	<p>Lot: _____</p> <p>Exp.: _____</p>
---	---	--------------------------------------

PRINCIPAL DISPLAY PANEL - Idarubicin Hydrochloride Injection, USP 10 mg per 10 mL Carton

NDC 71288-185-10

Rx only

Idarubicin Hydrochloride Injection, USP

10 mg per 10 mL

(1 mg per mL)

1x 10 mL Single-Dose Vial

Caution: Cytotoxic Agent

FOR INTRAVENOUS USE ONLY

Sterile, Isotonic Solution



PRINCIPAL DISPLAY PANEL - Idarubicin Hydrochloride Injection, USP 20 mg per 20 mL Container Label

NDC 71288-186-20

Rx only

Idarubicin Hydrochloride Injection, USP

20 mg per 20 mL

(1 mg per mL)

20 mL Single-Dose Vial

FOR INTRAVENOUS USE ONLY

Sterile, Isotonic Solution

NDC 71288-186-20 Rx only

IDarubicin
Hydrochloride Injection, USP

20 mg per 20 mL
(1 mg per mL)

20 mL Single-Dose Vial
FOR INTRAVENOUS USE ONLY
Sterile, Isotonic Solution

Each mL contains: 1 mg idarubicin hydrochloride, USP, 25 mg glycerin, USP, and water for injection, USP q.s. Hydrochloric acid and/or sodium hydroxide is added for pH adjustment. Contains no preservative, discard unused portion.

Usual Dosage: See Package Insert.
Store under refrigeration, 2° to 8°C (36° to 46°F). Protect from light.
Retain in carton until time of use.

WARNING: Severe cellulitis, vesication and tissue necrosis can occur if Idarubicin Hydrochloride Injection, USP is extravasated during administration.

LB-773-V1

meitheal
Mfd. for Meitheal Pharmaceuticals
Chicago, IL 60631 (USA)
Made in China
©2024 Meitheal Pharmaceuticals Inc.

(01)00371288186206

Lot: Exp.:

PRINCIPAL DISPLAY PANEL - Idarubicin Hydrochloride Injection, USP 20 mg per 20 mL Carton

NDC 71288-186-20

Rx only

Idarubicin Hydrochloride Injection, USP

20 mg per 20 mL

(1 mg per mL)

1 x 20 mL Single-Dose Vial

Caution: Cytotoxic Agent

FOR INTRAVENOUS USE ONLY

Sterile, Isotonic Solution



IDARUBICIN HYDROCHLORIDE			
idarubicin hydrochloride injection, solution			
Product Information			
Product Type	HUMAN PRESCRIPTION DRUG	Item Code (Source)	NDC:71288-184
Route of Administration	INTRAVENOUS		
Active Ingredient/Active Moiety			

Ingredient Name		Basis of Strength	Strength	
IDARUBICIN HYDROCHLORIDE (UNII: 5VV3MDU5IE) (IDARUBICIN - UNII:ZRP63D75JW)		IDARUBICIN HYDROCHLORIDE	1 mg in 1 mL	
Inactive Ingredients				
Ingredient Name		Strength		
GLYCERIN (UNII: PDC6A3C0OX)				
WATER (UNII: 059QF0KO0R)				
Other Ingredients				
Ingredient Kind	Ingredient Name		Quantity	
May contain	HYDROCHLORIC ACID (UNII: QTT17582CB)			
May contain	SODIUM HYDROXIDE (UNII: 55X04QC32I)			
Packaging				
#	Item Code	Package Description	Marketing Start Date	Marketing End Date
1	NDC:71288-184-05	1 in 1 CARTON	06/01/2025	
1		5 mL in 1 VIAL, SINGLE-DOSE; Type 0: Not a Combination Product		
Marketing Information				
Marketing Category		Application Number or Monograph Citation	Marketing Start Date	Marketing End Date
ANDA		ANDA065036	06/01/2025	

IDARUBICIN HYDROCHLORIDE

idarubicin hydrochloride injection, solution

Product Information			
Product Type	HUMAN PRESCRIPTION DRUG	Item Code (Source)	NDC:71288-185
Route of Administration	INTRAVENOUS		
Active Ingredient/Active Moiety			
Ingredient Name		Basis of Strength	Strength
IDARUBICIN HYDROCHLORIDE (UNII: 5VV3MDU5IE) (IDARUBICIN - UNII:Z RP63D75JW)		IDARUBICIN HYDROCHLORIDE	1 mg in 1 mL
Inactive Ingredients			
Ingredient Name		Strength	

GLYCERIN (UNII: PDC6A3C0OX)				
WATER (UNII: 059QF0KO0R)				
Other Ingredients				
Ingredient Kind	Ingredient Name	Quantity		
May contain	HYDROCHLORIC ACID (UNII: QTT17582CB)			
May contain	SODIUM HYDROXIDE (UNII: 55X04QC32I)			
Packaging				
#	Item Code	Package Description	Marketing Start Date	Marketing End Date
1	NDC:71288-185-10	1 in 1 CARTON	06/01/2025	
1		10 mL in 1 VIAL, SINGLE-DOSE; Type 0: Not a Combination Product		
Marketing Information				
Marketing Category	Application Number or Monograph Citation		Marketing Start Date	Marketing End Date
ANDA	ANDA065036		06/01/2025	

IDARUBICIN HYDROCHLORIDE			
idarubicin hydrochloride injection, solution			
Product Information			
Product Type	HUMAN PRESCRIPTION DRUG	Item Code (Source)	NDC:71288-186
Route of Administration	INTRAVENOUS		
Active Ingredient/Active Moiety			
Ingredient Name		Basis of Strength	Strength
IDARUBICIN HYDROCHLORIDE (UNII: 5VV3MDU5IE) (IDARUBICIN - UNII:ZRP63D75JW)		IDARUBICIN HYDROCHLORIDE	1 mg in 1 mL
Inactive Ingredients			
Ingredient Name		Strength	
GLYCERIN (UNII: PDC6A3C00X)			
WATER (UNII: 059QF0KO0R)			
Other Ingredients			
Ingredient Kind	Ingredient Name		Quantity

May contain	HYDROCHLORIC ACID (UNII: QTT17582CB)	
May contain	SODIUM HYDROXIDE (UNII: 55X04QC32I)	

Packaging

#	Item Code	Package Description	Marketing Start Date	Marketing End Date
1	NDC:71288-186-20	1 in 1 CARTON	06/01/2025	
1		20 mL in 1 VIAL, SINGLE-DOSE; Type 0: Not a Combination Product		

Marketing Information

Marketing Category	Application Number or Monograph Citation	Marketing Start Date	Marketing End Date
ANDA	ANDA065036	06/01/2025	

Labeler - Meitheal Pharmaceuticals Inc. (080548348)

Revised: 5/2025

Meitheal Pharmaceuticals Inc.