

MENSTRUAL COMPLETE MAXIMUM STRENGTH- acetaminophen, caffeine and pyrilamine maleate tablet, film coated
Wal-Mart Stores Inc

Menstrual Complete

Active ingredients (in each caplet)

Acetaminophen 500 mg
Caffeine 60 mg
Pyrilamine maleate 15 mg

Purpose

Pain reliever
Diuretic
Antihistamine

Uses

for the temporary relief of these symptoms associated with menstrual periods:

- bloating
- headache
- water-weight gain
- cramps
- backache
- fatigue
- muscle aches

Warnings

Liver warning: This product contains acetaminophen. Severe liver damage may occur if you take:

- more than 4,000 mg of acetaminophen in 24 hours
- with other drugs containing acetaminophen
- 3 or more alcoholic drinks every day while using this product

Allergy alert: Acetaminophen may cause severe skin reactions. Symptoms may include:

- skin reddening
- blisters
- rash

If a skin reaction occurs, stop use and seek medical help right away.

Do not use

- if you have ever had an allergic reaction to this product or any of its ingredients
- with any other drug containing acetaminophen (prescription or nonprescription). If you are not sure whether a drug contains acetaminophen, ask a doctor or pharmacist.

Ask a doctor before use if you have

- difficulty in urination due to enlargement of the prostate gland
- liver disease
- glaucoma
- a breathing problem such as emphysema or chronic bronchitis

Ask a doctor or pharmacist before use if you are

- taking the blood thinning drug warfarin
- taking sedatives or tranquilizers

When using this product

- avoid alcoholic beverages
- excitability may occur, especially in children
- be careful when driving a motor vehicle or operating machinery
- alcohol, sedatives, and tranquilizers may increase drowsiness
- you may get drowsy
- limit the use of caffeine-containing medications, foods, or beverages while taking this product because too much caffeine may cause nervousness, irritability, sleeplessness, and, occasionally, rapid heartbeat. The recommended dose of this product contains about as much caffeine as a cup of coffee.

Stop use and ask a doctor if

- new symptoms occur
- redness or swelling is present
- pain gets worse or lasts more than 10 days
- fever gets worse or lasts more than 3 days

These could be signs of a serious condition.

If pregnant or breast-feeding,

ask a health professional before use.

Keep out of reach of children

In case of accidental overdose, get medical help or contact a Poison Control Center right away. Prompt medical attention is critical for adults as well as for children even if you do not notice any signs or symptoms.

Directions

- **do not take more than the recommended dose**
- adults and children 12 years and over:
 - take 2 caplets with water
 - repeat every 6 hours, as needed

- do not exceed 6 caplets per day
- children under 12 years: ask a doctor

Other information

- see end flap for expiration date and lot number
- store at 25°C (77°F); excursions permitted between 15°C-30°C (59°F-86°F)

Inactive ingredients

corn starch, croscarmellose sodium, crospovidone, hypromellose, magnesium stearate, microcrystalline cellulose, polydextrose, polyethylene glycol, povidone, silicon dioxide, stearic acid, titanium dioxide, triacetin

Questions or comments?

1-888-287-1915

Principal Display Panel

equate™

NDC 49035-390-10

**Compare
to Midol®
Complete
Active Ingredients***

Maximum Strength

Menstrual Complete

Acetaminophen, Caffeine, Pyrilamine maleate
Pain Reliever/Diuretic/Antihistamine

Relieves:

- Cramps
- Bloating
- Fatigue
- Backache & headache

**40
CAPLETS**

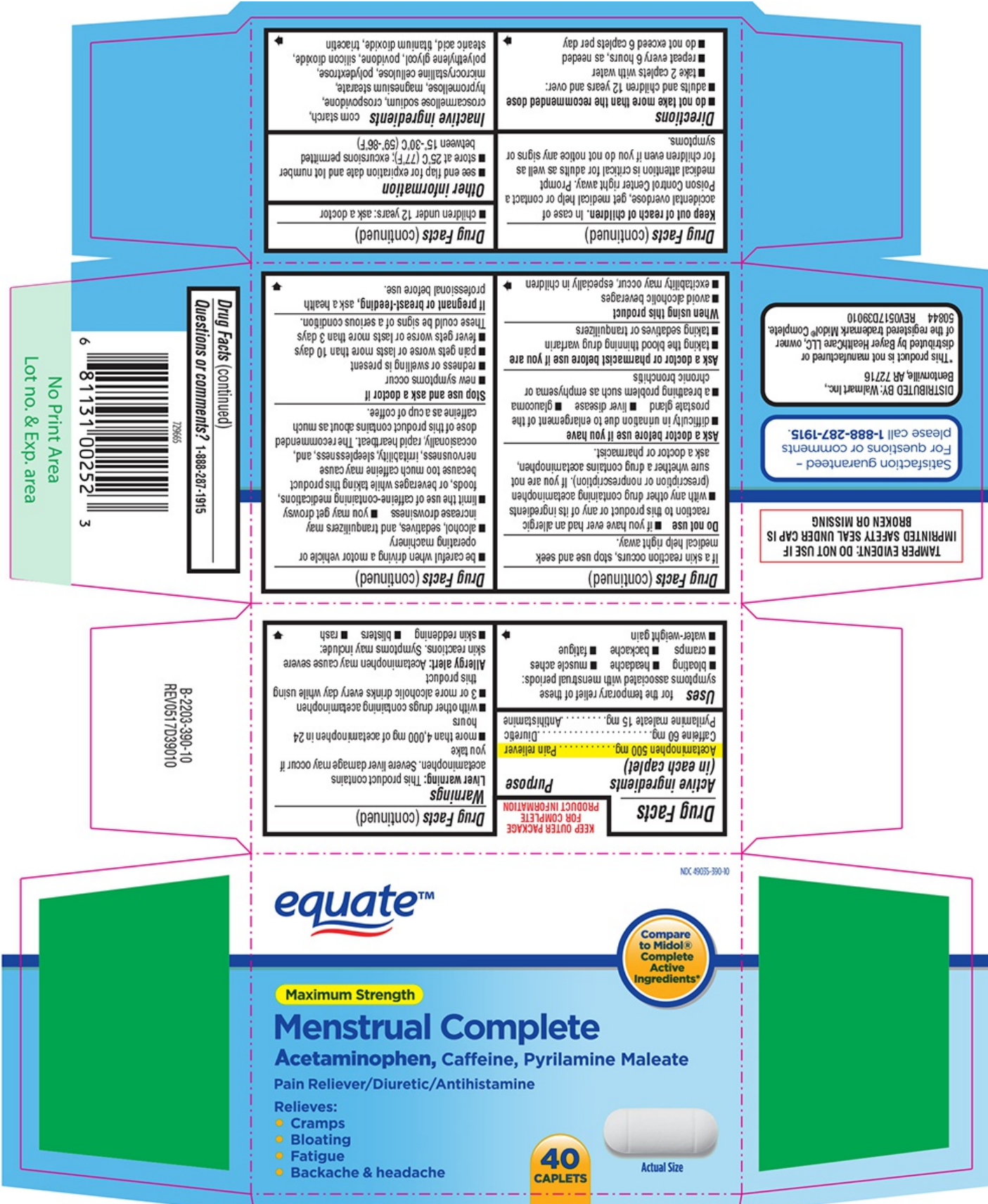
Actual Size

**TAMPER EVIDENT: DO NOT USE IF
IMPRINTED SAFETY SEAL UNDER CAP IS
BROKEN OR MISSING**

Satisfaction guaranteed -
For questions or comments
please call **1-888-287-1915.**

DISTRIBUTED BY: Walmart Inc.,
Bentonville, AR 72716

*This product is not manufactured or
distributed by Bayer HealthCare LLC, owner
of the registered trademark Midol® Complete.
50844 REV0517D39010



equate™

Compare to Midol® Complete Active Ingredients*

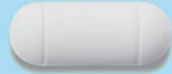
Maximum Strength

Menstrual Complete
Acetaminophen, Caffeine, Pyrilamine Maleate

Pain Reliever/Diuretic/Antihistamine

- Relieves:
- Cramps
 - Bloating
 - Fatigue
 - Backache & headache

40
CAPLETS



Actual Size

Equate 44-390

No Print Area
 Lot no. & Exp. area

72655
 81131-00252
 3

Questions or comments? 1-888-287-1915

Drug Facts (continued)

Keep out of reach of children. In case of accidental overdose, get medical help or contact a Poison Control Center right away. Prompt medical attention is critical for adults as well as for children even if you do not notice any signs or symptoms.

Directions

- do not take more than the recommended dose
- take 2 caplets with water
- repeat every 6 hours, as needed
- do not exceed 6 caplets per day

Inactive ingredients corn starch, croscarmellose sodium, crospovidone, hypromellose, magnesium stearate, microcrystalline cellulose, polydextrose, polyethylene glycol, povidone, silicon dioxide, stearic acid, titanium dioxide, Tracethin

Other information

- store at 25°C (77°F); excursions permitted between 15°-30°C (59°-86°F)
- see end flap for expiration date and lot number
- children under 12 years: ask a doctor

Drug Facts (continued)

If a skin reaction occurs, stop use and seek medical help right away.

Do not use ■ if you have ever had an allergic reaction to this product or any of its ingredients ■ with any other drug containing acetaminophen (prescription or nonprescription). If you are not sure whether a drug contains acetaminophen, ask a doctor or pharmacist.

Ask a doctor before use if you have

- difficulty in urination due to enlargement of the prostate gland ■ liver disease ■ glaucoma
- a breathing problem such as emphysema or chronic bronchitis

Ask a doctor or pharmacist before use if you are

- taking the blood thinning drug warfarin
- taking sedatives or tranquilizers

When using this product

- avoid alcoholic beverages
- excitability may occur, especially in children

Drug Facts (continued)

■ be careful when driving a motor vehicle or operating machinery

- alcohol, sedatives, and tranquilizers may increase drowsiness
- you may get drowsy
- limit the use of caffeine-containing medications, foods, or beverages while taking this product because too much caffeine may cause occasionally, rapid heartbeat. The recommended dose of this product contains about as much caffeine as a cup of coffee.

Stop use and ask a doctor if

- new symptoms occur
- redness or swelling is present
- pain gets worse or lasts more than 10 days
- fever gets worse or lasts more than 3 days

These could be signs of a serious condition. If pregnant or breast-feeding, ask a health professional before use.

Drug Facts (continued)

Warnings

Liver warning: This product contains acetaminophen. Severe liver damage may occur if you take

- more than 4,000 mg of acetaminophen in 24 hours
- with other drugs containing acetaminophen
- 3 or more alcoholic drinks every day while using this product

Allergy alert: Acetaminophen may cause severe skin reactions. Symptoms may include:

- skin reddening
- blisters
- rash
- water-weight gain
- cramps
- backache
- fatigue
- bloating
- headache
- muscle aches

Uses for the temporary relief of these symptoms associated with menstrual periods:

Acetaminophen 500 mg..... Pain reliever
 Caffeine 60 mg..... Diuretic
 Pyrilamine maleate 15 mg..... Antihistamine

Active ingredients (in each caplet)

Purpose

Drug Facts

KEEP OUTER PACKAGE FOR COMPLETE PRODUCT INFORMATION

DISTRIBUTED BY: Walmart Inc., Bentonville, AR 72716

*This product is not manufactured or distributed by Bayer HealthCare LLC, owner of the registered trademark Midol® Complete.

50844 REV0517D39010

Satisfaction guaranteed - please call 1-888-287-1915.

TAMPER EVIDENT: DO NOT USE IF IMPRINTED SAFETY SEAL UNDER CAP IS BROKEN OR MISSING

B-2203-390-10
 REV0517D39010

04-066-5206-X20

MENSTRUAL COMPLETE MAXIMUM STRENGTH
 acetaminophen, caffeine and pyrilamine maleate tablet, film coated

Product Information

Product Type	HUMAN OTC DRUG	Item Code (Source)	NDC:49035-390
Route of Administration	ORAL		

Active Ingredient/Active Moiety

Ingredient Name	Basis of Strength	Strength
ACETAMINOPHEN (UNII: 362O9ITL9D) (ACETAMINOPHEN - UNII:362O9ITL9D)	ACETAMINOPHEN	500 mg
CAFFEINE (UNII: 3G6A5W338E) (CAFFEINE - UNII:3G6A5W338E)	CAFFEINE	60 mg
PYRILAMINE MALEATE (UNII: R35D29L3ZA) (PYRILAMINE - UNII:HPE317O9TL)	PYRILAMINE MALEATE	15 mg

Inactive Ingredients

Ingredient Name	Strength
STARCH, CORN (UNII: O8232NY3SJ)	
CROSCARMELLOSE SODIUM (UNII: M28OL1HH48)	
CROSPVIDONE (UNII: 2S7830E561)	
HYPROMELLOSE, UNSPECIFIED (UNII: 3NXW29V3WO)	
MAGNESIUM STEARATE (UNII: 70097M6I30)	
MICROCRYSTALLINE CELLULOSE (UNII: OP1R32D61U)	
POLYDEXTROSE (UNII: VH2XOU12IE)	
POLYETHYLENE GLYCOL, UNSPECIFIED (UNII: 3WJQ0SDW1A)	
POVIDONE, UNSPECIFIED (UNII: FZ989GH94E)	
SILICON DIOXIDE (UNII: ETJ7Z6XBU4)	
STEARIC ACID (UNII: 4ELV7Z65AP)	
TITANIUM DIOXIDE (UNII: 15FIX9V2JP)	
TRIACETIN (UNII: XHX3C3X673)	

Product Characteristics

Color	white	Score	no score
Shape	OVAL	Size	17mm
Flavor		Imprint Code	44;390
Contains			

Packaging

#	Item Code	Package Description	Marketing Start Date	Marketing End Date
1	NDC:49035-390-10	1 in 1 CARTON	04/29/2002	
1		40 in 1 BOTTLE, PLASTIC; Type 0: Not a Combination Product		
2	NDC:49035-390-08	1 in 1 CARTON	04/29/2002	04/25/2013
2		24 in 1 BLISTER PACK; Type 0: Not a Combination Product		

Marketing Information

Marketing Category	Application Number or Monograph Citation	Marketing Start Date	Marketing End Date
OTC Monograph Drug	M013	04/29/2002	

Labeler - Wal-Mart Stores Inc (051957769)

Establishment

Name	Address	ID/FEI	Business Operations
LNK International, Inc.		038154464	pack(49035-390)

Establishment

Name	Address	ID/FEI	Business Operations
LNK International, Inc.		832867837	manufacture(49035-390) , pack(49035-390)

Establishment

Name	Address	ID/FEI	Business Operations
LNK International, Inc.		832867894	manufacture(49035-390)

Establishment

Name	Address	ID/FEI	Business Operations
LNK International, Inc.		967626305	pack(49035-390)

Establishment

Name	Address	ID/FEI	Business Operations
LNK International, Inc.		117025878	manufacture(49035-390)

Revised: 6/2023

Wal-Mart Stores Inc