

**DENTREE- sodium fluoride gel, dentifrice**  
**E-SOUP Co., Ltd.**

*Disclaimer: Most OTC drugs are not reviewed and approved by FDA, however they may be marketed if they comply with applicable regulations and policies. FDA has not evaluated whether this product complies.*

-----

**Drug Facts**

**Active Ingredient**

Sodium fluoride-----0.22%  
(1000 ppm of fluoride ion)

**Purpose**

Anticavity

**Use**

aids in the prevention of dental cavities, reducing halitosis, and tooth whitening

**Warnings**

keep out of reach of children.

If more than used for brushing is accidentally swallowed, get medical help or contact a Poison Control Center right away.

**Directions**

**Adults and children 6 years of age and older**

**Brushless:** shake the container before pumping 2-3 times on a toothbrush to brush the teeth or into mouth for close-mouthed; gargle the foam inside the mouth for about 30 seconds. Rinse off the residue with clean water several times to achieve the intended cleanliness.

**With Brush:** after gargle the foam inside the mouth for about 30 seconds, you may use toothbrush to clean before rinse.

**Children under 6 years old**

ask a dentist or physician

**Other Information**

store at room temperature.

**Inactive Ingredients**

Allantoin, Ginger, Tribasic Calcium Phosphate, Lingusticum Wallichii Whole, Artemisia princeps leaf, water

**Questions or Comments?**

call +82(53)584 3320

## **PRINCIPAL DISPLAY PANEL**

Dentree  
Green Foaming Toothpaste

**Drug Facts**

**Active Ingredient**  
Sodium fluoride .....0.22%  
(1000ppm of fluoride ion)

**Purpose** Anticavity

**Use** aids in the prevention of dental cavities, reducing halitosis, and tooth whitening

**Warnings** keep out of reach of children. If more than used for brushing is accidentally swallowed, get medical help or contact a Poison Control Center right away.

**Directions**  
Adults and children 6 years of age and older

**Brushless**: shake the container before pumping 2-3 times on a toothbrush to brush the teeth or into mouth for close-mouthed; gargle the foam inside the mouth for about 30 seconds. Rinse off the residue with clean water several times to achieve the intended cleanliness.

**With Brush**: after gargle the foam inside the mouth for about 30 seconds, you may use toothbrush to clean before rinse.

**Children under 6 years old** ask a dentist or physician

**Other Information**  
store at room temperature.

**Inactive Ingredients**  
Allantoin, Ginger, Tribasic Calcium Phosphate, Lingusticum Wallichii Whole, Artemisia princeps leaf, water

**Questions or comments?**  
call + 82(53)584 3320

**Lot No. / Expiration Date**

NDC 76170-103-02

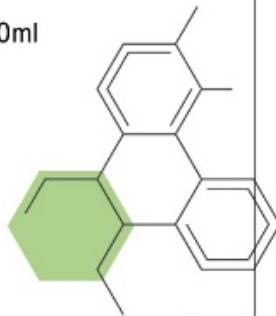
E-SOUP Co., Ltd. Rm 333, R&D Center, Daegu Techno Park venture Factory, 62, Seongseo Gongdan-ro 11-gil, Dalseo-gu, Daegu, KOREA 704-984

**E-SOUP** NDC 76170-103-02

**Dentree**  
Green Foaming Toothpaste

- Cavity Prevention
- Halitosis Reduction
- Tooth Whitening

50ml



Made In Korea

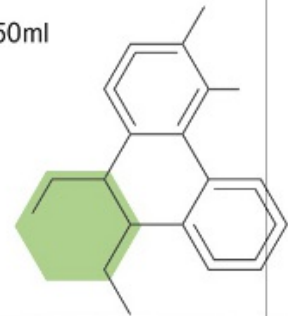


**E-SOUP** NDC 76170-103-02

**Dentree**  
Green Foaming Toothpaste

- Cavity Prevention
- Halitosis Reduction
- Tooth Whitening

50ml



**NDC 76170-103-02**

**Dentree**

Green Foaming Toothpaste

- Cavity Prevention
- Halitosis Reduction
- Tooth Whitening

50ml

**Lot No. / Expiration Date**

**E-SOUP Co., Ltd.** Rm 333 R&D Center,  
Daegu Techno Park venture Factory, 62  
Seongseo Gongdan-ro 11-gil, Dalseo-gu,  
Daegu, KOREA 704-948

Made in Korea

Dentree Green Foaming Toothpaste

**Drug Facts**

**Active Ingredient**  
Sodium fluoride .....0.22%  
(1000ppm of fluoride ion)

**Purpose** Anticavity

**Use** aids in the prevention of dental cavities, reducing halitosis, and tooth whitening

**Warnings** keep out of reach of children. If more than used for brushing is accidentally swallowed, get medical help or contact a Poison Control Center right away.

**Directions**  
Adults and children 6 years of age and older

**Brushless**: shake the container before pumping 2-3 times on a toothbrush to brush the teeth or into mouth for close-mouthed; gargle the foam inside the mouth for about 30 seconds. Rinse off the residue with clean water several times to achieve the intended cleanliness.

**With Brush**: after gargle the foam inside the mouth for about 30 seconds, you may use toothbrush to clean before rinse.

**Children under 6 years old** ask a dentist or physician

**Other Information**  
store at room temperature.

**Inactive Ingredients**  
Allantoin, Ginger, Tribasic Calcium Phosphate, Lingusticum Wallichii Whole, Artemisia princeps leaf, water

**Questions or comments?**  
call + 82(53)584 3320

**Lot No. / Expiration Date**

NDC 76170-103-02

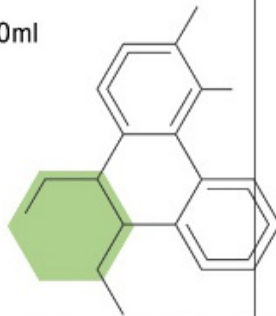
E-SOUP Co., Ltd. Rm 333, R&D Center, Daegu Techno Park venture Factory, 62, Seongseo Gongdan-ro 11-gil, Dalseo-gu, Daegu, KOREA 704-984

E-SOUP NDC 76170-103-02

**Dentree**  
Green Foaming Toothpaste

- Cavity Prevention
- Halitosis Reduction
- Tooth Whitening

50ml



Made In Korea

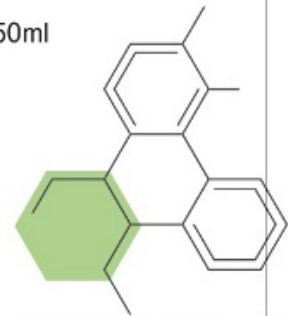


E-SOUP NDC 76170-103-02

**Dentree**  
Green Foaming Toothpaste

- Cavity Prevention
- Halitosis Reduction
- Tooth Whitening

50ml



sodium fluoride gel, dentifrice

### Product Information

<b>Product Type</b>	HUMAN OTC DRUG	<b>Item Code (Source)</b>	NDC:76170-103
<b>Route of Administration</b>	DENTAL		

### Active Ingredient/Active Moiety

<b>Ingredient Name</b>	<b>Basis of Strength</b>	<b>Strength</b>
SODIUM FLUORIDE (UNII: 8ZYQ1474W7) (FLUORIDE ION - UNII:Q80VPU408O)	SODIUM FLUORIDE	0.22 g in 100 mL

### Inactive Ingredients

<b>Ingredient Name</b>	<b>Strength</b>
ALLANTOIN (UNII: 344S277G0Z)	
GINGER (UNII: C5529G5JPQ)	
TRIBASIC CALCIUM PHOSPHATE (UNII: 91D9GV0Z28)	
LIGUSTICUM WALLICHII WHOLE (UNII: 8Y1N3NX2DW)	
ARTEMISIA PRINCEPS LEAF (UNII: SY077EW02G)	
WATER (UNII: 059QF0KO0R)	

### Product Characteristics

<b>Color</b>	green	<b>Score</b>	
<b>Shape</b>		<b>Size</b>	
<b>Flavor</b>	MINT	<b>Imprint Code</b>	
<b>Contains</b>			

### Packaging

#	Item Code	Package Description	Marketing Start Date	Marketing End Date
1	NDC:76170-103-01	1 in 1 CARTON	12/01/2012	
1		30 mL in 1 BOTTLE, PUMP; Type 0: Not a Combination Product		
2	NDC:76170-103-02	1 in 1 CARTON	12/01/2012	
2		50 mL in 1 BOTTLE, PUMP; Type 0: Not a Combination Product		
3	NDC:76170-103-03	1 in 1 CARTON	12/01/2012	
3		100 mL in 1 BOTTLE, PUMP; Type 0: Not a Combination Product		

### Marketing Information

<b>Marketing Category</b>	<b>Application Number or Monograph Citation</b>	<b>Marketing Start Date</b>	<b>Marketing End Date</b>
OTC monograph final	part355	12/01/2012	

**Labeler** - E-SOUP Co., Ltd. (557805059)

**Establishment**

Name	Address	ID/FEI	Business Operations
E-SOUP Co., Ltd		557805059	manufacture(76 170-103)

Revised: 4/2020

E-SOUP Co., Ltd.