

METHOTREXATE SODIUM- methotrexate sodium tablet

Hikma Pharmaceuticals USA Inc.

HIGHLIGHTS OF PRESCRIBING INFORMATION

These highlights do not include all the information needed to use METHOTREXATE TABLETS safely and effectively. See full prescribing information for METHOTREXATE TABLETS.

METHOTREXATE tablets, for oral use

Initial U.S. Approval: 1953

WARNING: EMBRYO-FETAL TOXICITY, HYPERSENSITIVITY REACTIONS, and SEVERE ADVERSE REACTIONS

See full prescribing information for complete boxed warning.

- **Methotrexate Tablets can cause embryo-fetal toxicity, including fetal death. For non-neoplastic diseases, Methotrexate Tablets are contraindicated in pregnancy. For neoplastic diseases, advise patients of reproductive potential of the potential risk to a fetus and to use effective contraception. (4, 5.1, 8.1, 8.3)**
- **Methotrexate Tablets are contraindicated in patients with a history of severe hypersensitivity reactions to methotrexate, including anaphylaxis. (4, 5.2)**
- **Serious adverse reactions, including death, have been reported with methotrexate. Closely monitor for adverse reactions of the bone marrow, gastrointestinal tract, liver, lungs, skin, and kidneys. Withhold or discontinue Methotrexate Tablets as appropriate. (5.3, 5.4, 5.5, 5.6, 5.7, 5.8)**

INDICATIONS AND USAGE

Methotrexate Tablets are a dihydrofolate reductase inhibitor indicated for the:

- Treatment of adults and pediatric patients with acute lymphoblastic leukemia (ALL) as part of a combination chemotherapy maintenance regimen (1.1)
- Treatment of adults with mycosis fungoides (1.1)
- Treatment of adults with relapsed or refractory non-Hodgkin lymphoma as part of a metronomic combination regimen (1.1)
- Treatment of adults with rheumatoid arthritis (1.2)
- Treatment of pediatric patients with polyarticular juvenile idiopathic arthritis (pJIA) (1.3)
- Treatment of adults with severe psoriasis (1.4)

DOSAGE AND ADMINISTRATION

- Instruct patients and caregivers to take the recommended dosage as directed, because medication errors have led to deaths. (2.1, 5.9)
- Verify pregnancy status in females of reproductive potential before starting Methotrexate Tablets. (4, 5.1)
- ALL: The recommended dosage is 20 mg/m² orally once weekly as a part of a combination chemotherapy maintenance regimen. (2.2)
- Mycosis fungoides: The recommended dosage is 25 to 75 mg orally once weekly as monotherapy; 10 mg/m² orally twice weekly as part of combination chemotherapy. (2.2)
- Relapsed or refractory non-Hodgkin lymphoma: The recommended dosage is 2.5 mg orally two to four times per week as part of metronomic combination chemotherapy. (2.2)
- Rheumatoid Arthritis: The recommended starting dosage is 7.5 mg orally once weekly; adjust dose to achieve an optimal response. (2.3)
- pJIA: The recommended starting dosage is 10 mg/m² orally once weekly; adjust dose to achieve an optimal response. (2.4)
- Psoriasis: The recommended dosage is 10 to 25 mg orally once weekly until adequate response is achieved. (2.5)

DOSAGE FORMS AND STRENGTHS

Tablets: 2.5 mg (3)

CONTRAINDICATIONS

- In pregnancy for non-neoplastic diseases (4)
- History of severe hypersensitivity to methotrexate (4)

WARNINGS AND PRECAUTIONS

- Serious Infections: Monitor patients for infection during and after treatment with Methotrexate Tablets. Withhold or discontinue Methotrexate Tablets for serious infections as appropriate. (5.11)
- Neurotoxicity: Monitor patients for neurotoxicity and withhold or discontinue Methotrexate Tablets as appropriate. (5.12)
- Secondary Malignancies: Can occur with methotrexate. (5.13)
- Tumor Lysis Syndrome: Institute appropriate prophylactic measures in patients at risk for tumor lysis syndrome prior to initiation of Methotrexate Tablets. (5.14)
- Immunizations and Risk Live Vaccines: Immunizations with live vaccines is not recommended. Follow current vaccination practice guidelines. (5.15)
- Infertility: Can cause impairment of fertility, oligospermia, and menstrual dysfunction. (5.16, 8.3)

ADVERSE REACTIONS

Common adverse reactions include ulcerative stomatitis, leukopenia, nausea, abdominal distress. (6.1)

To report SUSPECTED ADVERSE REACTIONS, contact Hikma Pharmaceuticals USA Inc. at 1-800-962-8364 or FDA at 1-800-FDA-1088 or www.fda.gov/medwatch.

DRUG INTERACTIONS

Refer to the full prescribing information for drug interactions with methotrexate. (7)

USE IN SPECIFIC POPULATIONS

Lactation: Instruct not to breastfeed. (8.2)

See 17 for PATIENT COUNSELING INFORMATION and FDA-approved patient labeling.

Revised: 3/2024

FULL PRESCRIBING INFORMATION: CONTENTS*

WARNING: EMBRYO-FETAL TOXICITY, HYPERSENSITIVITY REACTIONS AND SEVERE ADVERSE REACTIONS

1 INDICATIONS AND USAGE

- 1.1 Neoplastic Diseases
- 1.2 Rheumatoid Arthritis
- 1.3 Polyarticular Juvenile Idiopathic Arthritis
- 1.4 Psoriasis

2 DOSAGE AND ADMINISTRATION

- 2.1 Important Dosage and Safety Information
- 2.2 Recommended Dosage for Neoplastic Diseases
- 2.3 Recommended Dosage for Rheumatoid Arthritis
- 2.4 Recommended Dosage for Polyarticular Juvenile Idiopathic Arthritis
- 2.5 Recommended Dosage for Psoriasis
- 2.6 Dosage Modifications for Adverse Reactions

3 DOSAGE FORMS AND STRENGTHS

4 CONTRAINDICATIONS

5 WARNINGS AND PRECAUTIONS

- 5.1 Embryo-Fetal Toxicity
- 5.2 Hypersensitivity Reactions
- 5.3 Myelosuppression
- 5.4 Gastrointestinal Toxicity
- 5.5 Hepatotoxicity
- 5.6 Pulmonary Toxicity

- 5.7 Dermatologic Reactions
- 5.8 Renal Toxicity
- 5.9 Risk of Serious Adverse Reactions with Medication Error
- 5.10 Folic Acid Supplementation
- 5.11 Serious Infections
- 5.12 Neurotoxicity
- 5.13 Secondary Malignancies
- 5.14 Tumor Lysis Syndrome
- 5.15 Immunization and Risks Associated with Live Vaccines
- 5.16 Infertility
- 5.17 Increased Risk of Adverse Reactions Due to Third-Space Accumulation

6 ADVERSE REACTIONS

- 6.1 Clinical Trials Experience
- 6.2 Postmarketing Experience

7 DRUG INTERACTIONS

- 7.1 Effects of Other Drugs on Methotrexate

8 USE IN SPECIFIC POPULATIONS

- 8.1 Pregnancy
- 8.2 Lactation
- 8.3 Females and Males of Reproductive Potential
- 8.4 Pediatric Use
- 8.5 Geriatric Use
- 8.6 Renal Impairment
- 8.7 Hepatic Impairment

10 OVERDOSAGE

11 DESCRIPTION

12 CLINICAL PHARMACOLOGY

- 12.1 Mechanism of Action
- 12.3 Pharmacokinetics

13 NONCLINICAL TOXICOLOGY

- 13.1 Carcinogenesis, Mutagenesis, Impairment of Fertility

15 REFERENCES

16 HOW SUPPLIED/STORAGE AND HANDLING

17 PATIENT COUNSELING INFORMATION

* Sections or subsections omitted from the full prescribing information are not listed.

FULL PRESCRIBING INFORMATION

WARNING: EMBRYO-FETAL TOXICITY, HYPERSENSITIVITY REACTIONS AND SEVERE ADVERSE REACTIONS

- **Methotrexate Tablets can cause embryo-fetal toxicity, including fetal death. For non-neoplastic diseases, Methotrexate Tablets are contraindicated in pregnancy. For neoplastic diseases, advise females and males of reproductive potential to use effective contraception [see *Contraindications (4), Warnings and Precautions (5.1), Use in Specific Populations (8.1, 8.3)*].**
- **Methotrexate Tablets are contraindicated in patients with a history of severe hypersensitivity reactions to methotrexate, including anaphylaxis [Contraindications (4), Warnings and Precautions (5.2)].**
- **Serious adverse reactions, including death, have been reported with methotrexate. Closely monitor for adverse reactions of the bone marrow, gastrointestinal tract, liver, lungs, skin, and kidneys. Withhold or discontinue Methotrexate Tablets as appropriate [Warnings and Precautions (5.3, 5.4, 5.5, 5.6, 5.7, 5.8)].**

1 INDICATIONS AND USAGE

1.1 Neoplastic Diseases

Methotrexate Tablets are indicated for the:

- treatment of adults and pediatric patients with acute lymphoblastic leukemia (ALL) as part of a combination chemotherapy maintenance regimen
- treatment of adults with mycosis fungoides (cutaneous T-cell lymphoma) as a single agent or as part of a combination chemotherapy regimen
- treatment of adults with relapsed or refractory non-Hodgkin lymphomas as part of a metronomic combination chemotherapy regimen

1.2 Rheumatoid Arthritis

Methotrexate Tablets are indicated for the treatment of adults with rheumatoid arthritis.

1.3 Polyarticular Juvenile Idiopathic Arthritis

Methotrexate Tablets are indicated for the treatment of pediatric patients with polyarticular Juvenile Idiopathic Arthritis (pJIA).

1.4 Psoriasis

Methotrexate Tablets are indicated for the treatment of adults with severe psoriasis.

2 DOSAGE AND ADMINISTRATION

2.1 Important Dosage and Safety Information

Verify pregnancy status in females of reproductive potential before starting

Methotrexate Tablets [see *Contraindications (4), Warnings and Precautions (5.1)*].

Instruct patients and caregivers to take the recommended dosage as directed, because medication errors have led to deaths [see *Warnings and Precautions (5.9)*].

When switching the dosing regimen from oral administration to intravenous, intramuscular, or subcutaneous administration, an alternative dosing regimen may be necessary.

Do not administer to patients who are unable to swallow a tablet.

Methotrexate Tablets is a cytotoxic drug. Follow applicable special handling and disposal procedures.¹

2.2 Recommended Dosage for Neoplastic Diseases

Acute Lymphoblastic Leukemia

The recommended starting dosage of Methotrexate Tablets is 20 mg/m² orally once weekly, as part of a combination chemotherapy maintenance regimen. After initiating Methotrexate Tablets, periodically monitor absolute neutrophil count (ANC) and platelet count and adjust the dose to maintain ANC at a desirable level and for excessive myelosuppression.

Mycosis Fungoides

The recommended dosage of Methotrexate Tablets is 25 to 75 mg orally once weekly when administered as a single agent or 10 mg/m² orally twice weekly as part of a combination chemotherapy regimen.

Relapsed or Refractory Non-Hodgkin Lymphomas

The recommended dosage of Methotrexate Tablets is 2.5 mg orally 2 to 4 times per week (maximum 10 mg per week) as part of a metronomic combination chemotherapy regimen.

2.3 Recommended Dosage for Rheumatoid Arthritis

The recommended starting dosage of Methotrexate Tablets is 7.5 mg orally once weekly with escalation to achieve optimal response. Dosages of more than 20 mg once weekly result in an increased risk of serious adverse reactions, including myelosuppression. When responses are observed, the majority occurred between 3 and 6 weeks from initiation of treatment; however, responses have occurred up to 12 weeks after treatment initiation.

Administer folic acid or folinic acid to reduce the risk of methotrexate adverse reactions [see *Warnings and Precautions (5.10)*].

2.4 Recommended Dosage for Polyarticular Juvenile Idiopathic Arthritis

The recommended starting dosage of Methotrexate Tablets is 10 mg/m² orally once weekly with escalation to achieve optimal response. Dosages of more than 30 mg/m² once weekly result in an increased risk of serious adverse reactions, including myelosuppression. When responses are observed, the majority occurred between 3 and 6 weeks from initiation of treatment; however, responses have occurred up to 12 weeks after treatment initiation.

Administer folic acid or folinic acid to reduce the risk of methotrexate adverse reactions [see *Warnings and Precautions*(5.10)].

2.5 Recommended Dosage for Psoriasis

The recommended dosage of Methotrexate Tablets is 10 to 25 mg orally once weekly until an adequate response is achieved. Adjust the dose gradually to achieve optimal clinical response; do not exceed a dose of 30 mg per week. Once optimal clinical response has been achieved, reduce the dosage to the lowest possible dosing regimen.

Administer folic acid or folinic acid supplementation to reduce the risk of methotrexate adverse reactions [see *Warnings and Precautions* (5.10)].

2.6 Dosage Modifications for Adverse Reactions

Discontinue Methotrexate Tablets for:

- Anaphylaxis or other severe hypersensitivity reactions [see *Warnings and Precautions*(5.2)]
- Lymphoproliferative disease [see *Warnings and Precautions* (5.13)]

Withhold, dose reduce or discontinue Methotrexate Tablets as appropriate for :

- Myelosuppression [see *Warnings and Precautions* (5.3)]

Withhold or discontinue Methotrexate Tablets as appropriate for:

- Severe gastrointestinal toxicity [see *Warnings and Precautions* 5.4)]
- Hepatotoxicity [see *Warnings and Precautions* 5.5)]
- Pulmonary toxicity [see *Warnings and Precautions* 5.6)]
- Severe dermatologic reactions [see *Warnings and Precautions* 5.7)]
- Severe renal toxicity [see *Warnings and Precautions* 5.8)]
- Serious infections [see *Warnings and Precautions* 5.11)]
- Neurotoxicity [see *Warnings and Precautions* 5.12)]

3 DOSAGE FORMS AND STRENGTHS

Methotrexate Tablets USP, 2.5 mg

2.5 mg tablets are supplied as a yellow, round slightly biconvex tablet, scored on one side and product identification “54 323” debossed on the other side.

4 CONTRAINDICATIONS

Methotrexate Tablets are contraindicated in:

- Pregnant women receiving Methotrexate Tablets for treatment of non-neoplastic diseases [see *Warnings and Precautions* (5.1), and *Use in Specific Populations* (8.1, 8.3)].
- Patients with a history of severe hypersensitivity reactions, including anaphylaxis, to methotrexate [see *Warnings and Precautions* (5.2)].

5 WARNINGS AND PRECAUTIONS

5.1 Embryo-Fetal Toxicity

Based on published reports and its mechanism of action, Methotrexate Tablets can cause fetal harm, including fetal death, when administered to a pregnant woman. Methotrexate Tablets is contraindicated for use in pregnant women receiving Methotrexate Tablets for the treatment of non-malignant diseases. Advise pregnant women with neoplastic diseases of the potential risk to a fetus. Advise females of reproductive potential to use effective contraception during treatment with Methotrexate Tablets and for 6 months after the final dose. Advise males with female partners of reproductive potential to use effective contraception during Methotrexate Tablets treatment and for 3 months after the final dose [*see Contraindications (4), Use in Specific Populations (8.1, 8.3)*].

5.2 Hypersensitivity Reactions

Hypersensitivity reactions, including anaphylaxis, can occur with methotrexate [*see Contraindications (4), Adverse Reactions (6.1)*].

If anaphylaxis or other serious hypersensitivity reaction occurs, immediately and permanently discontinue Methotrexate Tablets [*see Dosage and Administration (2.6)*].

5.3 Myelosuppression

Methotrexate suppresses hematopoiesis and can cause severe and life-threatening pancytopenia, anemia, leukopenia, neutropenia, and thrombocytopenia [*see Adverse Reactions (6.1)*].

Obtain blood counts at baseline, periodically during treatment, and as clinically indicated. Monitor patients for clinical complications of myelosuppression. Withhold, dose reduce, or discontinue Methotrexate Tablets taking into account the importance of Methotrexate Tablet treatment in the context of the severity of the disease being treated, the severity of the adverse drug reaction, and availability of alternative therapy [*see Dosage and Administration (2.6)*].

5.4 Gastrointestinal Toxicity

Diarrhea, vomiting, nausea, and stomatitis occurred in up to 10% of patients receiving methotrexate for treatment of non-neoplastic diseases. Hemorrhagic enteritis and fatal intestinal perforation have been reported [*see Adverse Reactions (6.1,6.2)*]. Patients with peptic ulcer disease or ulcerative colitis are at a greater risk of developing severe gastrointestinal adverse reactions [*see Drug Interactions (7.1)*].

Withhold or discontinue Methotrexate Tablets for severe gastrointestinal toxicity taking into account the importance of Methotrexate Tablet treatment in the context of the severity of the disease being treated, the severity of the adverse drug reaction, and availability of alternative therapy [*see Dosage and Administration (2.6)*].

5.5 Hepatotoxicity

Methotrexate can cause severe and potentially irreversible hepatotoxicity, including fibrosis, cirrhosis, and fatal liver failure [*see Adverse Reactions (6.1)*]. The safety of

Methotrexate Tablets in patients with hepatic disease is unknown.

The risk of hepatotoxicity is increased with heavy alcohol consumption. In patients with psoriasis, fibrosis or cirrhosis may occur in the absence of symptoms or abnormal liver tests; the risk of hepatotoxicity appears to increase with total cumulative dose and generally occurs after receipt of a total cumulative dose of 1.5 g or more.

Monitor liver tests at baseline, periodically during treatment and as clinically indicated. Withhold or discontinue Methotrexate Tablets taking into account the importance of Methotrexate Tablet treatment in the context of the severity of the disease being treated, the severity of the adverse drug reaction, and availability of alternative therapy [see *Dosage and Administration (2.6)*].

5.6 Pulmonary Toxicity

Pulmonary toxicity, including acute or chronic interstitial pneumonitis and irreversible or fatal cases, can occur with methotrexate [see *Adverse Reactions (6.1, 6.2)*].

Monitor patients for pulmonary toxicity and withhold or discontinue Methotrexate Tablets taking into account the importance of Methotrexate Tablet treatment in the context of the severity of the disease being treated, the severity of the adverse drug reaction, and availability of alternative therapy [see *Dosage and Administration (2.6)*].

5.7 Dermatologic Reactions

Severe, including fatal dermatologic reactions, such as toxic epidermal necrolysis, Stevens-Johnson syndrome, exfoliative dermatitis, skin necrosis, and erythema multiforme, can occur with methotrexate [see *Adverse Reactions (6.1, 6.2)*].

Exposure to ultraviolet radiation while taking methotrexate may aggravate psoriasis.

Methotrexate can cause radiation recall dermatitis and photodermatitis (sunburn) reactivation.

Monitor patients for dermatologic toxicity and withhold or permanently discontinue Methotrexate Tablets for severe dermatologic reactions taking into account the importance of Methotrexate Tablet treatment in the context of the severity of the disease being treated, the severity of the adverse drug reaction, and availability of alternative therapy [see *Dosage and Administration (2.6)*]. Advise patients to avoid excessive sun exposure and use sun protection measures.

5.8 Renal Toxicity

Methotrexate can cause renal toxicity, including irreversible acute renal failure [see *Adverse Reactions (6.2)*].

Monitor renal function at baseline, periodically during treatment and as clinically indicated. Withhold or discontinue Methotrexate Tablets for severe renal toxicity taking into account the importance of Methotrexate Tablet treatment in the context of the severity of the disease being treated, the severity of the adverse drug reaction, and availability of alternative therapy [see *Dosage and Administration (2.6)*].

Administer glucarpidase in patients with toxic plasma methotrexate concentrations (> 1 micromole per liter) and delayed methotrexate clearance due to impaired renal function. Refer to the glucarpidase prescribing information for additional information.

5.9 Risk of Serious Adverse Reactions with Medication Error

Deaths occurred in patients as a result of medication errors. Most commonly, these errors occurred in patients who were taking methotrexate daily when a weekly dosing regimen was prescribed.

For patients prescribed a once weekly dosing regimen, instruct patients and caregivers to take the recommended dosage as directed, because medication errors have led to death.

5.10 Folic Acid Supplementation

Neoplastic Diseases

Products containing folic acid or its derivatives may decrease the clinical effectiveness of methotrexate. Therefore, instruct patients not to take products containing folic acid or folinic acid unless directed to do so by their healthcare provider.

Non-neoplastic Diseases

Folate deficiency may increase methotrexate adverse reactions. Administer folic acid or folinic acid for patients with rheumatoid arthritis, pJIA, and psoriasis [see *Dosage and Administration* (2.3, 2.4, 2.5)].

5.11 Serious Infections

Patients treated with methotrexate are at increased risk for developing life-threatening or fatal bacterial, fungal, or viral infections, including opportunistic infections such as *Pneumocystis jiroveci* pneumonia, invasive fungal infections, hepatitis B reactivation, tuberculosis primary infection or reactivation, and disseminated Herpes zoster and cytomegalovirus infections [see *Adverse Reactions* (6.2)].

Monitor patients for infection during and after treatment with Methotrexate Tablets. Withhold or discontinue Methotrexate Tablets for serious infections taking into account the importance of Methotrexate Tablet treatment in the context of the severity of the disease being treated, the severity of the adverse drug reaction, and availability of alternative therapy [see *Dosage and Administration* (2.6)].

5.12 Neurotoxicity

Methotrexate can cause severe acute and chronic neurotoxicity, which can be progressive, irreversible, and fatal [see *Adverse Reactions* (6.2)]. The risk of leukoencephalopathy is increased in patients who received prior cranial radiation.

Monitor patients for neurotoxicity and withhold or discontinue Methotrexate Tablets taking into account the importance of Methotrexate Tablet treatment in the context of the severity of the disease being treated, the severity of the adverse drug reaction, and availability of alternative therapy [see *Dosage and Administration* (2.6)].

5.13 Secondary Malignancies

Secondary malignancies can occur with methotrexate [see *Adverse Reactions* (6.2)]. The risk of cutaneous malignancies is further increased when cyclosporine is administered to patients with psoriasis who received prior methotrexate.

In some cases, lymphoproliferative disease occurring during therapy with low-dose methotrexate regressed completely following withdrawal of methotrexate. If lymphoproliferative disease occurs, discontinue Methotrexate Tablets [*see Dosage and Administration (2.6)*].

5.14 Tumor Lysis Syndrome

Methotrexate can induce tumor lysis syndrome in patients with rapidly growing tumors. Institute appropriate prophylactic measures in patients at risk for tumor lysis syndrome prior to initiation of Methotrexate Tablets.

5.15 Immunization and Risks Associated with Live Vaccines

Disseminated infections following administration of live vaccines have been reported. Immunization with live vaccines is not recommended during treatment. Follow current vaccination practice guidelines for administration of immunizations in patients receiving Methotrexate Tablets.

Update immunizations according to immunization guidelines prior to initiating Methotrexate Tablets. The interval between live vaccinations and initiation of methotrexate should be in accordance with current vaccination guidelines regarding immunosuppressive agents.

5.16 Infertility

Based on published reports, methotrexate can cause impairment of fertility, oligospermia, and menstrual dysfunction. It is not known if the infertility may be reversible. Discuss the risk of infertility with females and males of reproductive potential [*see Use in Specific Populations (8.3)*].

5.17 Increased Risk of Adverse Reactions Due to Third-Space Accumulation

Methotrexate accumulates in third-spaces (e.g., pleural effusions or ascites), which results in prolonged elimination and increases the risk of adverse reactions. Evacuate significant third-space accumulations prior to Methotrexate Tablets administration taking into account the importance of Methotrexate Tablet treatment in the context of the severity of the disease being treated, the severity of the adverse drug reaction, and availability of alternative therapy.

6 ADVERSE REACTIONS

The following clinically significant adverse reactions are described elsewhere in the labeling:

- Hypersensitivity Reactions [*see Warnings and Precautions (5.2)*]
- Myelosuppression [*see Warnings and Precautions (5.3)*]
- Gastrointestinal Toxicity [*see Warnings and Precautions (5.4)*]
- Hepatotoxicity [*see Warnings and Precautions (5.5)*]
- Pulmonary Toxicity [*see Warnings and Precautions (5.6)*]
- Dermatologic Reactions [*see Warnings and Precautions (5.7)*]
- Renal Toxicity [*see Warnings and Precautions (5.8)*]
- Serious Infections [*see Warnings and Precautions (5.11)*]

- Neurotoxicity [see *Warnings and Precautions (5.12)*]
- Secondary Malignancies [see *Warnings and Precautions (5.13)*]
- Tumor Lysis Syndrome [see *Warnings and Precautions (5.14)*]
- Increased Risk of Adverse Reactions Due to Third-Space Accumulation [see *Warnings and Precautions(5.17)*]

6.1 Clinical Trials Experience

Because clinical trials and other studies are conducted under widely varying conditions, adverse reaction rates observed in the clinical trials of a drug cannot be directly compared to rates in the clinical trials of another drug and may not reflect the rates observed in practice.

Common adverse reactions were: ulcerative stomatitis, leukopenia, nausea, and abdominal distress. Other clinically relevant adverse reactions were infection, malaise, fatigue, chills, fever, and dizziness.

Rheumatoid Arthritis

The most common adverse reactions of methotrexate that exceeded the rate of placebo in 12- to 18-week double-blind studies in patients (n=128) with rheumatoid arthritis are listed below. Patients received methotrexate 7.5 to 15 mg orally once weekly. Most patients received concomitant nonsteroidal anti-inflammatory drugs (NSAIDs) and some also received corticosteroids. Hepatic histology was not examined in these short-term studies.

Incidence \geq 10%: Elevated liver tests 15%, nausea/vomiting 10%

Incidence 3% to <10%: Stomatitis, thrombocytopenia (platelet count < 100,000/mm³)

Incidence 1% to <3%: Rash/pruritus/dermatitis, diarrhea, alopecia, leukopenia (white blood cell count < 3000/mm³), pancytopenia, dizziness

Two other controlled trials of patients (n=680) with rheumatoid arthritis who received methotrexate 7.5 mg to 15 mg orally once weekly showed the following serious adverse reaction:

Incidence 1%: Interstitial pneumonitis

Other less common adverse reactions were: anemia, headache, upper respiratory infection, anorexia, arthralgias, chest pain, coughing, dysuria, eye discomfort, epistaxis, fever, infection, sweating, tinnitus, vaginal discharge.

Polyarticular Juvenile Idiopathic Arthritis (pJIA)

The most common adverse reactions reported in patients 2 to 18 years of age with pJIA treated with methotrexate 5 mg/m² to 20 mg/m² orally once weekly or 0.1 to 0.65 mg/kg orally once weekly were as follows: elevated liver tests 14%; gastrointestinal reactions (e.g., nausea, vomiting, diarrhea) 11%; stomatitis 2%; leukopenia 2%; headache 1.2%; alopecia 0.5%; dizziness 0.2%; rash 0.2%. Most patients received concomitant NSAIDs and some also received corticosteroids.

Psoriasis

In two published series of adults with psoriasis (n=204, 248) who received methotrexate up to 25 mg per week for up to 4 years, adverse reaction rates were similar to those in patients with rheumatoid arthritis, except for alopecia,

photosensitivity, and “burning of skin lesions” (3% to 10% each). Painful plaque erosions have been reported.

6.2 Postmarketing Experience

The following adverse reactions have been identified during postapproval use of methotrexate. Because these reactions are reported voluntarily from a population of uncertain size, it is not always possible to reliably estimate their frequency or establish a causal relationship to drug exposure.

Cardiovascular: Thromboembolic events (including arterial thrombosis, cerebral thrombosis, deep vein thrombosis, retinal vein thrombosis, thrombophlebitis, and pulmonary embolus), pericarditis, pericardial effusion, hypotension, sudden death

Endocrine: Diabetes

Eye: Optic neuropathy, blurred vision, ocular pain, conjunctivitis, xerophthalmia

Gastrointestinal: Hemorrhagic enteritis, intestinal perforation, gingivitis, pancreatitis, pharyngitis, hematemesis, melena, gastrointestinal ulceration

Hematology: Aplastic anemia, lymphadenopathy, hypogammaglobulinemia

Hepatobiliary: Acute hepatitis, decreased serum albumin, fibrosis, cirrhosis

Immune system: Anaphylaxis, anaphylactoid reactions, vasculitis

Metabolism: Hyperglycemia

Musculoskeletal: Stress fracture, soft tissue and bone necrosis, arthralgia, myalgia, osteoporosis

Nervous system: Headaches, drowsiness, blurred vision, speech impairment (including dysarthria and aphasia), transient cognitive dysfunction, mood alteration, unusual cranial sensations, paresis, encephalopathy, and convulsions.

Renal: Azotemia, hematuria, proteinuria, cystitis

Reproductive: Defective oogenesis or spermatogenesis, loss of libido, impotence, gynecomastia, menstrual dysfunction

Respiratory: Pulmonary fibrosis, respiratory failure, chronic interstitial obstructive pulmonary disease, pleuritic pain and thickening, alveolitis

Skin: Toxic epidermal necrolysis, Stevens-Johnson syndrome, exfoliative dermatitis, skin necrosis, and erythema multiforme, erythematous rashes, pruritus, alopecia, skin ulceration, accelerated nodulosis, urticaria, pigmentary changes, ecchymosis, telangiectasia, photosensitivity, acne, furunculosis

7 DRUG INTERACTIONS

7.1 Effects of Other Drugs on Methotrexate

Drugs that Increase Methotrexate Exposure

Coadministration of methotrexate with the following products may increase methotrexate plasma concentrations, which may increase the risk of methotrexate

severe adverse reactions. In some cases, the coadministration of methotrexate with these products may also subsequently reduce active metabolite formation, which may decrease the clinical effectiveness of methotrexate. Increased organ specific adverse reactions may also occur when methotrexate is coadministered with hepatotoxic or nephrotoxic products.

If coadministration cannot be avoided, monitor closely for methotrexate adverse reactions when coadministered with:

- Oral antibiotics (including neomycin)
- Oral or intravenous penicillin or sulfonamide antibiotics
- Highly protein-bound drugs (e.g., oral anticoagulants, phenytoin, salicylates, sulfonamides, sulfonyleureas, and tetracyclines)
- Probenecid
- Antifolate drugs (e.g., dapsone, pemetrexed, pyrimethamine and sulfonamides)
- Aspirin and other nonsteroidal anti-inflammatory drugs
- Hepatotoxic products
- Proton pump inhibitors
- Weak acids (e.g., salicylates)
- Nephrotoxic products

Nitrous Oxide

Coadministration of methotrexate with nitrous oxide anesthesia potentiates the effect of methotrexate on folate-dependent metabolic pathways, which may increase the risk of severe methotrexate adverse reactions. Avoid nitrous oxide anesthesia in patients receiving methotrexate. Consider alternative therapies in patients who have received prior nitrous oxide anesthesia.

Folic Acid

Coadministration of methotrexate with folic acid or its derivatives decreases the clinical effectiveness of methotrexate in patients with neoplastic diseases. Methotrexate competes with reduced folates for active transport across cell membranes. Instruct patients to take folic or folinic acid only as directed by their healthcare provider [see *Warnings and Precautions (5.10)*].

8 USE IN SPECIFIC POPULATIONS

8.1 Pregnancy

Risk Summary

Methotrexate Tablets are contraindicated in pregnant women with non-neoplastic diseases [see *Contraindications (4)*].

Based on published reports and its mechanism of action [see *Clinical Pharmacology (12.1)*], methotrexate can cause embryo-fetal toxicity and fetal death when administered to a pregnant woman. There are no animal data that meet current standards for nonclinical developmental toxicity studies. Advise pregnant women with neoplastic diseases of the potential risk to a fetus.

In the U.S. general population, the estimated background risk of major birth defects and miscarriage in clinically recognized pregnancies is 2% to 4% and 15% to 20%, respectively.

Data

Human Data

Published data from case reports, literature reviews, and observational studies report that methotrexate exposure during pregnancy is associated with an increased risk of embryo-fetal toxicity and fetal death. Methotrexate exposure during the first trimester of pregnancy is associated with an increased incidence of spontaneous abortions and multiple adverse developmental outcomes, including skull anomalies, facial dysmorphism, central nervous system abnormalities, limb abnormalities, and sometimes cardiac anomalies and intellectual impairment. Adverse outcomes associated with exposure during second and third trimesters of pregnancy include intrauterine growth restriction and functional abnormalities. Because methotrexate is widely distributed and persists in the body for a prolonged period, there is a potential risk to the fetus from preconception methotrexate exposure.

A prospective multicenter study evaluated pregnancy outcomes in women taking methotrexate less than or equal to 30 mg/week after conception. The rate of spontaneous abortion and miscarriage in pregnant women exposed to methotrexate was 42% (95% confidence interval [95% CI] 29, 59), which was higher than in unexposed patients with autoimmune disease (22%; 95% CI: 17, 30) and unexposed patients with nonautoimmune disease (17%; 95% CI: 13, 23). Of the live births, the rate of major birth defects in pregnant women exposed to methotrexate after conception was higher than in unexposed patients with autoimmune disease (adjusted odds ratio (OR) 1.8 [95% CI: 0.6, 6]) and unexposed patients with non-autoimmune disease (adjusted OR 3.1 [95% CI: 1, 10]) (2.9%). Major birth defects associated with pregnancies exposed to methotrexate after conception were not always consistent with methotrexate-associated adverse developmental outcomes.

8.2 Lactation

Risk Summary

Limited published literature report the presence of methotrexate in human milk in low amounts, with the highest breast milk to plasma concentration ratio reported to be 0.08:1. There are no data on the effects of methotrexate or its metabolites on the breastfed child or their effects on milk production. Because of the potential for serious adverse reactions in a breastfed child, instruct women not to breastfeed during treatment with Methotrexate Tablets and for 1 week after the final dose.

8.3 Females and Males of Reproductive Potential

Methotrexate can cause malformations and fetal death at doses less than or equal to the recommended clinical doses [*Use in Specific Populations (8.1)*].

Pregnancy Testing

Verify the pregnancy status of females of reproductive potential prior to initiating Methotrexate Tablets [*see Contraindications (4), Use in Specific Populations (8.1)*].

Contraception

Females

Advise females of reproductive potential to use effective contraception during treatment with Methotrexate Tablets and for 6 months after the final dose.

Males

Methotrexate can cause chromosomal damage to sperm cells. Advise males with female partners of reproductive potential to use effective contraception during treatment with Methotrexate Tablets and for 3 months after the final dose.

Infertility

Females

Based on published reports of female infertility after methotrexate, advise females of reproductive potential that methotrexate can cause impairment of fertility and menstrual dysfunction during treatment with Methotrexate Tablets and after the final dose. It is not known if the infertility may be reversed in all affected females.

Males

Based on published reports of male infertility after methotrexate, advise males that methotrexate can cause oligospermia or infertility during treatment with Methotrexate Tablets and after the final dose. It is not known if the infertility may be reversed in all affected males.

8.4 Pediatric Use

The safety and effectiveness of Methotrexate Tablets in pediatric patients have been established for the treatment of ALL as part of the combination chemotherapy maintenance regimen and the treatment of pJIA [see *Indications and Usage (1), Dosage and Administration (2)*]. No new safety signals have been observed in pediatric patients in clinical studies [see *Adverse Reactions (6.1)*].

The safety and effectiveness of Methotrexate Tablets have not been established in pediatric patients for the other indications [see *Indications and Usage (1)*].

8.5 Geriatric Use

Clinical studies of methotrexate did not include sufficient numbers of subjects aged 65 and over to determine whether they respond differently from younger subjects.

8.6 Renal Impairment

Methotrexate elimination is reduced in patients with renal impairment [see *Clinical Pharmacology (12.3)*]. Patients with renal impairment are at increased risk for methotrexate adverse reactions. Closely monitor patients with renal impairment [creatinine clearance (CL_{cr}) less than 90 mL/min, Cockcroft-Gault] for adverse reactions. Reduce the dosage or discontinue Methotrexate Tablets as appropriate [see *Warnings and Precautions (5.8)*].

8.7 Hepatic Impairment

The pharmacokinetics and safety of methotrexate in patients with hepatic impairment is unknown. Patients with hepatic impairment may be at increased risk for methotrexate

adverse reactions based on the elimination characteristics of methotrexate [see *Clinical Pharmacology* (12.3)]. Closely monitor patients with hepatic impairment for adverse reactions. Reduce the dosage or discontinue Methotrexate Tablets as appropriate [see *Warnings and Precautions* (5.5)].

10 OVERDOSAGE

Overdosage, including fatal overdosage, has occurred with methotrexate [see *Warnings and Precautions* (5.9)].

Manifestations

Manifestations of methotrexate overdosage include adverse reactions reported at pharmacologic doses, particularly hematologic and gastrointestinal reactions (e.g., leukopenia, thrombocytopenia, anemia, pancytopenia, myelosuppression, mucositis, stomatitis, oral ulceration, nausea, vomiting, gastrointestinal ulceration, or gastrointestinal bleeding). In some cases, no symptoms were reported; however, sepsis or septic shock, renal failure, and aplastic anemia were also reported.

Management

Leucovorin and levoleucovorin are indicated for diminishing the methotrexate adverse reactions of methotrexate overdosage. Administer leucovorin or levoleucovorin as soon as possible after methotrexate overdosage. Monitor serum creatinine and methotrexate levels to guide leucovorin or levoleucovorin therapy. Refer to the leucovorin or levoleucovorin prescribing information for additional dosage information.

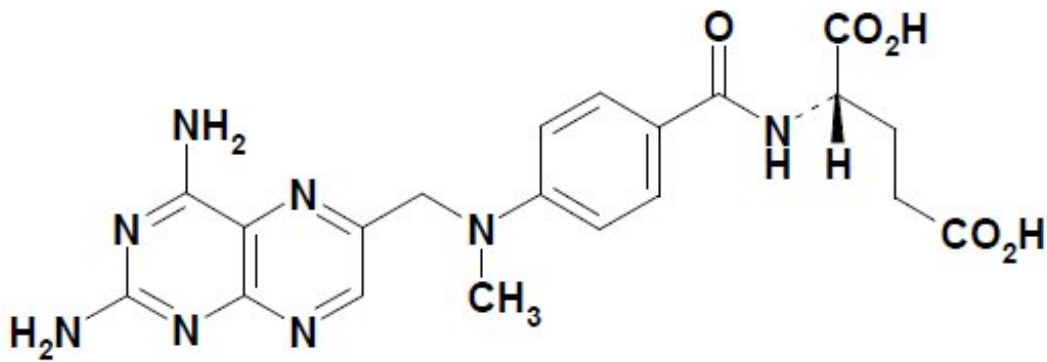
Glucarpidase is indicated for the treatment of toxic plasma methotrexate concentrations (>1 micromole per liter) in patients with delayed methotrexate clearance due to impaired renal function. Refer to the glucarpidase prescribing information for additional dosage information.

Administer concomitant hydration and urinary alkalinization.

Neither hemodialysis nor peritoneal dialysis has been shown to improve methotrexate elimination; however, methotrexate has been effectively cleared with acute, intermittent hemodialysis using a high-flux dialyzer.

11 DESCRIPTION

Methotrexate is dihydrofolate reductase inhibitor with the chemical name of L-(+)-N-[p-[[[(2,4-Diamino-6-pteridinyloxy)methyl]-methylamino]benzoyl]glutamic acid. The molecular formula is C₂₀H₂₂N₈O₅ and the molecular weight is 454.44 g/mol. The structural formula is:



Methotrexate Tablets, USP for oral administration are available as 2.5 mg tablets. Each methotrexate tablet, USP contains 2.5 mg methotrexate equivalent to 2.74 mg methotrexate sodium and the following inactive ingredients: lactose (anhydrous), magnesium stearate, pregelatinized starch, sodium hydroxide, sodium starch glycolate and purified water.

12 CLINICAL PHARMACOLOGY

12.1 Mechanism of Action

Methotrexate inhibits dihydrofolate reductase. Dihydrofolates must be reduced to tetrahydrofolates by this enzyme before they can be utilized as carriers of one-carbon groups in the synthesis of purine nucleotides and thymidylate. Therefore, methotrexate interferes with DNA synthesis, repair, and cellular replication. Actively proliferating tissues such as malignant cells, bone marrow, fetal cells, buccal and intestinal mucosa, and cells of the urinary bladder are in general more sensitive to this effect of methotrexate.

The mechanism of action in rheumatoid arthritis and in psoriasis is unknown.

12.3 Pharmacokinetics

Absorption

At doses of 30 mg/m² or less, the mean bioavailability is approximately 60%. Peak plasma concentrations are reached within 0.75 to 6 hours following oral administration. Methotrexate may undergo enterohepatic recirculation; however, this pathway has not been fully characterized.

Effect of Food

Food has been shown to delay absorption and reduce peak concentration.

Distribution

Methotrexate in serum is approximately 50% protein bound.

Methotrexate does not penetrate the blood-cerebrospinal fluid barrier at concentrations achieved with the recommended dosages.

Elimination

The elimination half-life of methotrexate is approximately 3 to 10 hours.

Small amounts of methotrexate polyglutamates may remain in tissues for extended periods. The retention and prolonged drug action of these active metabolites vary among different cells, tissues, and tumors.

Nonlinear elimination due to saturation of renal tubular reabsorption has been observed in studies of patients with psoriasis receiving methotrexate doses between 7.5 mg and 30 mg.

Metabolism

Methotrexate is partially metabolized by intestinal flora after oral administration.

Methotrexate primarily undergoes hepatic and intracellular metabolism to active polyglutamated forms which can be converted back to methotrexate by hydrolase enzymes. Methotrexate also undergoes minor metabolism to active 7-hydroxymethotrexate.

Excretion

Methotrexate primarily undergoes renal excretion by glomerular filtration and active tubular secretion that is dependent upon dosage and route of administration.

Biliary excretion accounts for $\leq 10\%$ of the methotrexate dose.

Specific Populations

The effect of hepatic impairment on the pharmacokinetics of methotrexate is unknown.

Pediatric Patients

In pediatric patients with leukemia, oral absorption (23% to 95%) of methotrexate is variable and dose-dependent. The difference between highest and lowest peak methotrexate concentrations (C_{\max} 0.11 to 2.3 micromolar after a 20 mg/m² dose) was 20-fold. The time to peak concentration (T_{\max} 0.67 to 4 hours after a 15 mg/m² dose) and fraction of dose absorbed is variable. The absorption of doses greater than 40 mg/m² is significantly less than that of lower doses.

In pediatric patients with pJIA, plasma concentrations of methotrexate are variable. Following oral administration of methotrexate 6.4 mg/m²/week to 11.2 mg/m²/week, mean serum concentrations were 0.59 micromolar (0.03 to 1.40) at 1 hour, 0.44 micromolar (0.01 to 1.00) at 2 hours, and 0.29 micromolar (0.06 to 0.58) at 3 hours.

In pediatric patients receiving methotrexate for acute lymphoblastic leukemia (6.3 mg/m² to 30 mg/m²) or for JIA (3.75 mg/m² to 26.2 mg/m²), the terminal half-life has been reported to range from 0.7 to 5.8 hours or from 0.9 to 2.3 hours, respectively.

Patients with Renal Impairment

The elimination half-life of methotrexate is variable and increases with the severity of renal impairment.

13 NONCLINICAL TOXICOLOGY

13.1 Carcinogenesis, Mutagenesis, Impairment of Fertility

Methotrexate has been evaluated in a number of animal studies for carcinogenic potential with inconclusive results. There is evidence that methotrexate causes chromosomal damage to animal somatic cells and human bone marrow cells.

15 REFERENCES

1. "OSHA Hazardous Drugs." *OSHA*.
<http://www.osha.gov/SLTC/hazardousdrugs/index.html>.

16 HOW SUPPLIED/STORAGE AND HANDLING

Methotrexate Tablets USP, 2.5 mg (contain an amount of methotrexate sodium equivalent to 2.5 mg of methotrexate, USP)

2.5 mg tablets are supplied as a yellow, round slightly biconvex tablet, scored on one side and product identification "54 323" debossed on the other side.

NDC 0054-8550-25: 10x10 Unit-Dose

NDC 0054-4550-15: Bottle of 36 Tablets

NDC 0054-4550-25: Bottle of 100 Tablets

Dispense with a child-resistant closure in a well closed container, as defined in the USP/NF.

Store at 20°C to 25°C (68°F to 77°F); excursions permitted to 15°C to 30°C (59°F to 86°F). [See USP Controlled Room Temperature.]

Methotrexate Tablets are a cytotoxic drug. Follow applicable special handling and disposal procedures.¹

17 PATIENT COUNSELING INFORMATION

Advise the patient to read the FDA-approved patient labeling (Patient Information).

Embryo-Fetal Toxicity

- Advise females of reproductive potential of the potential risk to a fetus and to inform their healthcare provider of a known or suspected pregnancy [see *Contraindications (4), Warnings and Precautions (5.1), Use in Specific Populations (8.1)*].
- Advise females of reproductive potential to use effective contraception during treatment with Methotrexate Tablets and for 6 months after the final dose [see *Use in Specific Populations (8.3)*].
- Advise males of reproductive potential to use effective contraception during treatment with Methotrexate Tablets and for 3 months after the final dose [see *Use in Specific Populations (8.3)*].

Hypersensitivity Reactions

Advise patients and their caregivers of the potential risk of hypersensitivity and that Methotrexate Tablets is contraindicated in patients with a history of hypersensitivity reactions to methotrexate. Instruct patients to seek immediate medical attention for signs of a hypersensitivity reaction [see *Warnings and Precautions (5.2)*].

Myelosuppression and Serious Infections

Inform patients and their caregivers that Methotrexate Tablets can cause myelosuppression and the need for frequent monitoring of blood cell counts. Advise patients and their caregivers to immediately report new onset fever, symptoms of infection, easy bruising or persistent bleeding to their healthcare provider [see *Warnings and Precautions (5.3, 5.11)*].

Gastrointestinal Toxicity

Advise patients and their caregivers to report new or worsening diarrhea, vomiting, or stomatitis to their healthcare provider. Advise patients to immediately contact their healthcare provider for high fever, rigors, persistent or severe abdominal pain, severe constipation, hematemesis, or melena [see *Warnings and Precautions (5.4)*].

Hepatotoxicity

Advise patients and their caregivers to report signs or symptoms of hepatic toxicity to their healthcare provider [see *Warnings and Precautions (5.5)*].

Pulmonary Toxicity

Advise patients and their caregivers to report new or worsening cough, fever, or dyspnea to their healthcare provider [see *Warnings and Precautions (5.6)*].

Dermatologic Reactions

Advise patients and their caregivers that Methotrexate Tablets can cause serious skin rash and to immediately contact their healthcare provider for new or worsening skin rash. Advise patients and their caregivers to avoid excessive sun exposure and use sun protection measures [see *Warnings and Precautions (5.7)*].

Renal Toxicity

Advise patients and their caregivers to immediately contact their healthcare provider for signs or symptoms of renal toxicity, such as marked increases or decreases in urinary output [see *Warnings and Precautions (5.8)*].

Risk of Serious Adverse Reactions with Medication Error

For patients who are prescribed a once weekly dosing regimen, advise patients and caregivers that the recommended dosage is to be taken once weekly as a single dose and that mistakenly taking the recommended weekly dosage once daily has led to fatal adverse reactions [see *Warnings and Precautions (5.9)*].

Neurotoxicity

Advise patients and their caregivers to report new neurological signs or symptoms to their healthcare provider [see *Warnings and Precautions (5.12)*].

Secondary Malignancies

Advise patients on the risk of second primary malignancies during treatment with Methotrexate Tablets [see *Warnings and Precautions (5.13)*].

Lactation

Instruct women not to breastfeed during treatment with Methotrexate Tablets and for 1 week after the final dose [see Use in Specific Populations (8.2)].

Infertility

Advise females and males of reproductive potential that methotrexate may impair fertility [see Warnings and Precautions (5.16), Use in Specific Populations (8.3)].

Drug Interactions

Advise patients and caregivers to inform their healthcare provider of all concomitant medications, including prescription medicines, over-the-counter drugs, vitamins, and herbal products [see Drug Interactions (7)].

Distributed by: **Hikma**

Pharmaceuticals USA Inc.

Berkeley Heights, NJ 07922

C50000762/01

Revised June 2023

Patient Information Methotrexate (meth oh trex ate) Tablets

What is the most important information I should know about Methotrexate? Methotrexate can cause serious side effects that may be severe and lead to death, including:

Harm to an unborn baby, including birth defects or death of an unborn baby. Females who can become pregnant:

- Your healthcare provider should do a pregnancy test before you start taking Methotrexate to see if you are pregnant.
- o **If you are being treated for a medical condition other than cancer, do not take Methotrexate if you are pregnant. See “Who should not take Methotrexate?”**
- o If you are taking Methotrexate to treat your cancer, you and your healthcare provider will decide if you will take Methotrexate if you are pregnant.
- o Use effective birth control (contraception) during treatment and for **6** months after your final dose of Methotrexate. Ask your healthcare provider what forms of birth control you can use during this time.

Tell your healthcare provider right away if you become pregnant or think you are pregnant during treatment with Methotrexate.

Males with female partners who are able to become pregnant:

- o Use effective birth control during treatment and for **3** months after your final dose of Methotrexate.

Tell your healthcare provider right away if your female partner becomes pregnant during treatment with Methotrexate.

Severe allergic reactions. Severe allergic reactions can happen with Methotrexate. Signs and symptoms of a severe allergic reaction may include:

- skin rash, itching and hives
- swelling of the face, lips, tongue, or throat
- dizziness
- trouble breathing
- wheezing
- fast heart rate
- feeling faint
- stomach-area pain
- vomiting or diarrhea

Do not take Methotrexate if you have had a severe allergic reaction to Methotrexate in the past.

Get medical help right away if you develop any of the signs or symptoms of a severe allergic reaction listed above. **Decreased blood cell counts.** Methotrexate can affect your bone marrow and cause decreases in red blood counts, white blood cell counts, and platelets that can be severe and life-threatening.

- Your healthcare provider will check your blood cell counts when you start and during treatment with Methotrexate.

Call your healthcare provider right away if you develop any of the following:

- a new fever
- symptoms of infection
- easy bruising or bleeding that will not stop (persistent bleeding)

Severe stomach and intestine problems (gastrointestinal) problems.

- Diarrhea, vomiting, nausea, and mouth sores can happen in people who take Methotrexate.
- **Inflammation of the intestine with severe bleeding and a tear in the intestinal wall (perforation) have happened with Methotrexate and cause death.**
- People who have stomach ulcers (peptic ulcer disease) or ulcerative colitis (UC) have a greater risk of developing severe stomach or intestine problems with Methotrexate.

Tell your healthcare provider if you develop new or worsening diarrhea, vomiting, or mouth sores during treatment with Methotrexate.

Tell your healthcare provider right away if you develop high fever, shaking chills (rigors), pain in your stomach-area (abdomen) that will not go away or is severe, severe constipation, if you are vomiting blood or have blood in your stools.

Liver problems. Methotrexate can cause severe liver problems including liver scarring (fibrosis), cirrhosis, and liver failure that may not get better (possibly irreversible) and can cause death.

- **In people with psoriasis** who take Methotrexate, liver fibrosis or cirrhosis may happen without any symptoms or abnormal liver tests. The risk for liver problems in people with psoriasis increases as with the amount of Methotrexate that you take over time.

- Your healthcare provider will do tests to monitor your liver function before you start and during treatment with Methotrexate.
Tell your healthcare provider if you have any signs or symptoms of liver problems during treatment with Methotrexate, including:

- tiredness
- easy bleeding or bruising
- loss of appetite
- nausea
- difficulty thinking clearly
- swelling in your legs, feet or ankles
- weight loss
- itchy skin
- yellowing of your skin or the white part of your eyes
- weakness

Lung problems. Lung problems can happen suddenly (acute) with Methotrexate or they can develop over a long period-of-time (chronic). Lung problems may not get better (possibly irreversible) and can cause death.

Tell your healthcare provider if you have any new or worsening symptoms including: cough (especially a dry cough), fever, or trouble breathing.

Severe skin reactions. Severe skin reactions can happen with Methotrexate and can lead to death.

- In people with psoriasis: Your psoriasis may get worse if you are exposed to sunlight or other types of ultraviolet light.
- Methotrexate can cause reactivation of skin reactions that can happen after radiation therapy (radiation recall dermatitis) and cause sunburn to come back (photodermatitis).

Limit sunlight exposure during treatment with Methotrexate. Use sunscreen and wear protective clothing when you will be exposed to sunlight during treatment with Methotrexate.

Tell your healthcare provider right away about any new or worsening skin rash during treatment with Methotrexate.

Kidney problems. Kidney problems can happen with Methotrexate, including kidney failure which can happen suddenly (acute) and may not go away (irreversible).

Your healthcare provider will check your kidney function before you start and during treatment with Methotrexate.

Tell your healthcare provider right away if you have any signs or symptoms of kidney problems, including:

- a big change (either increase or decrease) in the amount of urine you produce
- swelling in your legs, ankles or feet
- shortness of breath
- tiredness
- weight gain

See **“What are the possible side effects of Methotrexate”** for more information about side effects.

What is Methotrexate?

Methotrexate is a prescription medicine used:

- in combination with other chemotherapy medicines in adults and children, for

maintenance treatment of acute lymphoblastic leukemia (ALL)

- to treat adults with mycosis fungoides (cutaneous T-cell lymphoma)
- in combination with other therapies to treat adults with non-Hodgkin lymphoma that has come back (relapsed) or did not respond to previous treatment (refractory)
- to treat adults with rheumatoid arthritis
- to treat children with polyarticular juvenile idiopathic arthritis (pJIA)
- to treat adults with severe psoriasis

It is not known if Methotrexate is safe and effective in treating children with any disease other than ALL as part of a combination regimen used for maintenance therapy of their cancer, and for the treatment of pJIA.

It is not known if Methotrexate is safe in people with liver problems.

Do not take Methotrexate if you:

- are pregnant and are being treated or will be treated with Methotrexate for rheumatoid arthritis, pJIA, or severe psoriasis or for any disease other than cancer). Methotrexate can cause harm to an unborn baby, including birth defects or death of an unborn baby. See **“What is the most important information I should know about Methotrexate?”**
- have or had a severe allergic reaction to Methotrexate in the past. See **“What is the most important information I should know about Methotrexate?”** See the end of this leaflet for a complete list of ingredients in Methotrexate.

Before taking Methotrexate tell your healthcare provider about all of your medical conditions, including if you:

- have problems swallowing tablets
- have kidney problems or are receiving dialysis treatments
- have liver problems
- drink alcohol-containing beverages and, during treatment with Methotrexate, if there are any changes in the amount of alcoholic beverages you drink
- have fluid in your stomach-area (ascites)
- have lung problems or fluid in your lungs (pleural effusion)
- plan to have any surgeries with general anesthesia, including dental surgery
- have stomach ulcers (peptic ulcer disease)
- have ulcerative colitis
- have recently received or are scheduled to receive a vaccine. You should not receive live vaccines during treatment with Methotrexate.
- are breastfeeding or plan to breastfeed. Methotrexate may pass into your breast milk. Do not breastfeed during treatment and for 1 week after your last dose of Methotrexate.

Tell your healthcare provider about all the medicines you take, including prescription and over-the-counter medicines, vitamins and herbal supplements. Methotrexate and certain other medicines can affect each other and cause serious side effects. Do not start or change any medicines unless you have talked to your doctor and your doctor has told you it is safe. Know all the medicines that you take and keep a list of them with you at all times to show doctors and pharmacists.

How should I take Methotrexate?

- **Take Methotrexate exactly as prescribed by your healthcare provider.** Your dose of Methotrexate and when you take it will depend on the condition that is being treated.
- **Do not** take more Methotrexate than prescribed. Do not change your dose of Methotrexate unless your healthcare provider tells you to.
- **Taking more Methotrexate than prescribed or taking Methotrexate more often than prescribed, can lead to severe side effects and cause death.**
- **If you take too much Methotrexate call your healthcare provider or go to your nearest hospital emergency room right away. You will need to receive a medicine as soon as possible to help reduce side effects that could be severe and could cause death.**
- **If you miss taking a dose of Methotrexate, call your healthcare provider for instructions about when to take your next dose of Methotrexate.**

If you are taking Methotrexate for treatment of severe psoriasis, rheumatoid arthritis, or polyarticular juvenile idiopathic arthritis:

- **Take your Methotrexate dose 1 time each week, not every day. Severe side effects and death have happened in people who mistakenly have taken Methotrexate every day instead of 1 time each week.**
- **Take a folic acid or folinic acid supplement every day during treatment with Methotrexate,** as instructed by your healthcare provider, to help reduce the chance of developing certain side effects, such as mouth sores.

If you are taking Methotrexate to treat your cancer:

- **Follow your healthcare provider's instructions about how much Methotrexate to take and when to take it.**
- **Do not take folic acid or folinic acid** during treatment with Methotrexate unless your healthcare provider tells you to. Taking folic acid or folinic acid with Methotrexate may make your Methotrexate treatment less effective.

What are the possible side effects of Methotrexate?

Methotrexate can cause serious side effects that may be severe and lead to death including:

- See **"What is the most important information I should know about Methotrexate?"**
- **Serious infections.** People who take Methotrexate have an increased risk of developing infections that can be life-threatening or cause death. These infections may include: bacterial, fungal, or viral infections, including *Pneumocystis jirovecii* pneumonia, invasive fungal infections, hepatitis B infection that comes back (reactivation), tuberculosis infection that may be new or reactivation, and Herpes zoster or cytomegalovirus (CMV) that spreads throughout the body (disseminated).

Tell your healthcare provider right away if you develop a new fever or if you have any symptoms of infection during treatment with Methotrexate.

- **Brain and spinal cord (nervous system) problems.** Methotrexate can cause nervous system problems that can be severe and last for a short time or last for a

long time. These nervous system problems can get progressively worse, may not get better (irreversible), and can cause death. The risk for a certain nervous system problem called leukoencephalopathy is increased in people who have had radiation treatment to their head (cranial radiation) in the past.

Tell your healthcare provider about any new nervous system symptoms that you develop during treatment with Methotrexate.

- **Secondary cancers.** Secondary (new) cancers can happen in people who take Methotrexate.
 - o In people with psoriasis, the risk of new skin cancers is increased with Methotrexate and further increased if you take the medicine cyclosporine after receiving treatment with Methotrexate.
 - o Certain blood cancers can happen during treatment with Methotrexate. In some cases, these blood cancers may completely go away (regress completely) after Methotrexate is stopped.
- **Tumor lysis syndrome (TLS).** TLS is caused by the fast breakdown of cancer cells. TLS can cause kidney failure and the need for dialysis treatment, abnormal heart rhythm, seizure, and sometimes death. Your healthcare provider may do blood tests to check you for TLS if you are receiving Methotrexate as a cancer treatment.
- **Possible fertility problems (infertility) in males and females.** Methotrexate can cause fertility problems in males and females, and can cause sperm production to stop in males, and menstrual problems in females. Males may not be able to father a child. Females may not be able to become pregnant. It is not known if your fertility may return. Talk with your healthcare provider about your risk for infertility if this is a concern for you.

The most common side effects of Methotrexate include:

- mouth sores
- low white blood cells. **See “What is the most important information I should know about Methotrexate?”**
- nausea, upset stomach

These are not all the side effects of Methotrexate. Ask your healthcare provider or pharmacist for more information.

Call your doctor for medical advice about side effects. You may report side effects to FDA at 1-800- FDA-1088.

How should I store Methotrexate tablets?

- Store at 20°C to 25°C (68°F to 77°F).
- Keep Methotrexate tablets away from light.

Keep Methotrexate and all medicines out of the reach of children.

General information about the safe and effective use of Methotrexate.

Medicines are sometimes prescribed for purposes other than those listed in a Patient Information leaflet. Do not use methotrexate for a condition for which it was not prescribed. Do not give methotrexate to other people, even if they have the same symptoms that you have. It may harm them. This leaflet summarizes the most important information about methotrexate. If you would like more information, talk with

your healthcare provider. You can ask your pharmacist or healthcare provider for information about methotrexate that is written for healthcare professionals.

What are the ingredients in Methotrexate?

Active Ingredients: methotrexate

Inactive Ingredients: lactose (anhydrous), magnesium stearate, pregelatinized starch, sodium hydroxide, sodium starch glycolate, and purified water.

This Patient Information has been approved by the U.S. Food and Drug Administration.

Distributed by: **Hikma**

**Pharmaceuticals USA Inc.
Berkeley Heights, NJ 07922**

C50000762/01

Revised June 2023

PACKAGE/LABEL PRINCIPAL DISPLAY PANEL

NDC 0054-4550-15: Bottle of 36 Tablets

Rx only

Each tablet contains 2.5 mg methotrexate, USP equivalent to 2.74 mg methotrexate sodium.

Recommended Dosage: See prescribing information.

KEEP OUT OF THE REACH OF CHILDREN.

Dispense in a tight, light-resistant, child-resistant container as defined in the USP/NF.

Store at 20°C to 25°C (68°F to 77°F); excursions permitted to 15°C to 30°C (59°F to 86°F). [See USP Controlled Room Temperature.]

NDC 0054-4550-15 36 Tablets

Methotrexate
Tablets, USP

2.5 mg

PHARMACIST: Dispense with attached Patient Information.

Caution: Cytotoxic Agent

Distributed by: Hikma Pharmaceuticals USA Inc.
Berkeley Heights, NJ 07922

Rx only
hikma.

N
0054-4550-15
4

C50000765/01

PACKAGE/LABEL PRINCIPAL DISPLAY PANEL

NDC 0054-8550-25: 10x10 Unit-Dose

Rx only



METHOTREXATE SODIUM

methotrexate sodium tablet

Product Information

Product Type	HUMAN PRESCRIPTION DRUG	Item Code (Source)	NDC:0054-4550
Route of Administration	ORAL		

Active Ingredient/Active Moiety

Ingredient Name	Basis of Strength	Strength
METHOTREXATE SODIUM (UNII: 3IG1E710ZN) (METHOTREXATE - UNII:YL5FZ2Y5U1)	METHOTREXATE	2.5 mg

Inactive Ingredients

Ingredient Name	Strength
-----------------	----------

ANHYDROUS LACTOSE (UNII: 3SY5LH9PMK)	
MAGNESIUM STEARATE (UNII: 70097M6I30)	
STARCH, CORN (UNII: O8232NY3SJ)	
SODIUM HYDROXIDE (UNII: 55X04QC32I)	
SODIUM STARCH GLYCOLATE TYPE A POTATO (UNII: 5856J3G2A2)	

Product Characteristics

Color	YELLOW	Score	2 pieces
Shape	ROUND	Size	6mm
Flavor		Imprint Code	54323
Contains			

Packaging

#	Item Code	Package Description	Marketing Start Date	Marketing End Date
1	NDC:0054-4550-25	100 in 1 BOTTLE, PLASTIC; Type 0: Not a Combination Product	08/01/1994	
2	NDC:0054-4550-15	36 in 1 BOTTLE, PLASTIC; Type 0: Not a Combination Product	08/01/1994	05/31/2025

Marketing Information

Marketing Category	Application Number or Monograph Citation	Marketing Start Date	Marketing End Date
ANDA	ANDA040054	08/01/1994	

METHOTREXATE SODIUM

methotrexate sodium tablet

Product Information

Product Type	HUMAN PRESCRIPTION DRUG	Item Code (Source)	NDC:0054-8550
Route of Administration	ORAL		

Active Ingredient/Active Moiety

Ingredient Name	Basis of Strength	Strength
METHOTREXATE SODIUM (UNII: 3IG1E710ZN) (METHOTREXATE - UNII:YL5FZ2Y5U1)	METHOTREXATE	2.5 mg

Inactive Ingredients

Ingredient Name	Strength
ANHYDROUS LACTOSE (UNII: 3SY5LH9PMK)	
MAGNESIUM STEARATE (UNII: 70097M6I30)	

STARCH, CORN (UNII: 08232NY3SJ)	
SODIUM HYDROXIDE (UNII: 55X04QC32I)	
SODIUM STARCH GLYCOLATE TYPE A POTATO (UNII: 5856J3G2A2)	

Product Characteristics			
Color	YELLOW	Score	2 pieces
Shape	ROUND	Size	6mm
Flavor		Imprint Code	54323
Contains			

Packaging				
#	Item Code	Package Description	Marketing Start Date	Marketing End Date
1	NDC:0054-8550-25	10 in 1 CARTON	08/01/1994	08/31/2024
1		10 in 1 BLISTER PACK; Type 0: Not a Combination Product		

Marketing Information			
Marketing Category	Application Number or Monograph Citation	Marketing Start Date	Marketing End Date
ANDA	ANDA040054	08/01/1994	

Labeler - Hikma Pharmaceuticals USA Inc. (080189610)

Establishment			
Name	Address	ID/FEI	Business Operations
West-Ward Columbus Inc.		058839929	MANUFACTURE(0054-4550, 0054-8550)

Revised: 3/2024

Hikma Pharmaceuticals USA Inc.