

TENSION NO. 5- witch hazel cream
Maywell Co., Ltd.

Disclaimer: Most OTC drugs are not reviewed and approved by FDA, however they may be marketed if they comply with applicable regulations and policies. FDA has not evaluated whether this product complies.

ACTIVE INGREDIENT

Active Ingredient: HAMAMELIS VIRGINIANA (WITCH HAZEL) WATER 0.0002%

INACTIVE INGREDIENT

Inactive Ingredients: WATER, BUTYLENE GLYCOL, ARGININE HCL, GLUTAMINE, LYSINE HCL, CAPRYLIC/CAPRIC TRIGLYCERIDE, HYDROGENATED LECITHIN, HYALURONIC ACID, PIPER METHYSTICUM LEAF/ROOT/STEM EXTRACT, POLYSORBATE 80, COMMIPHORA MYRRHA LEAF CELL EXTRACT, NELUMBO NUCIFERA LEAF EXTRACT, PYRUS MALUS (APPLE) FRUIT EXTRACT, JASMINUM SAMBAC (JASMINE) LEAF CELL EXTRACT, BIFIDA FERMENT LYSATE, RAFFINOSE, ARCTIUM LAPPA ROOT EXTRACT, PEG-60 HYDROGENATED CASTOR OIL, POLYQUATERNIUM-51, LECITHIN, GLYCERIN, CAPRYLYL GLYCOL, 1,2-HEXANEDIOL, SODIUM HYALURONATE, ANTHEMIS NOBILIS FLOWER WATER, BETA-GLUCAN, CENTAUREA CYANUS FLOWER WATER, EPILOBIUM ANGUSTIFOLIUM FLOWER/LEAF/STEM EXTRACT, INOSITOL, MAGNOLIA OFFICINALIS BARK EXTRACT, PSEUDOALTEROMONAS FERMENT EXTRACT, BHT, FRAGRANCE, PHELLINUS LINTEUS EXTRACT, ADENOSINE, DISODIUM EDTA, POTASSIUM SORBATE, FOLIC ACID, CERAMIDE 3, CHOLESTEROL, DIOSGENIN, ACETIC ACID, LACTIC ACID, ALCOHOL, TROMETHAMINE, PANTHENOL, PHENOXYETHANOL, DIPEPTIDE-2, COPPER TRIPEPTIDE-1, PALMITOYL TRIPEPTIDE-5, ACETYL HEXAPEPTIDE-8, PALMITOYL PENTAPEPTIDE-4, PALMITOYL TETRAPEPTIDE-7, ACETYL TRIPEPTIDE-1, PALMITOYL TRIPEPTIDE-1

PURPOSE

Purpose: Skin Protectant

WARNINGS

Warnings: 1. In case of having following symptoms after using this, you're advised to stop using it immediately. If you keep using it, the symptoms will get worse and need to consult a dermatologist. 1) In case of having problems such as red rash, swollenness, itching, stimulation during usage. 2) In case of having the same symptoms above on the part you put this product on by direct sunlight. 2. You are banned to use it on the part where you have a scar, eczema, or dermatitis. 3. In case of getting it into your eyes, you have to wash it immediately.

KEEP OUT OF REACH OF CHILDREN

Keep out of reach of babies and children

INDICATIONS & USAGE

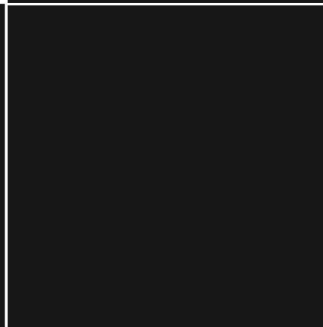
Indications & Usage: After washing your face in the morning and evening, spray it on your face five times and on your neck three times as the first step of skin care. After patting it in gently with your hands,

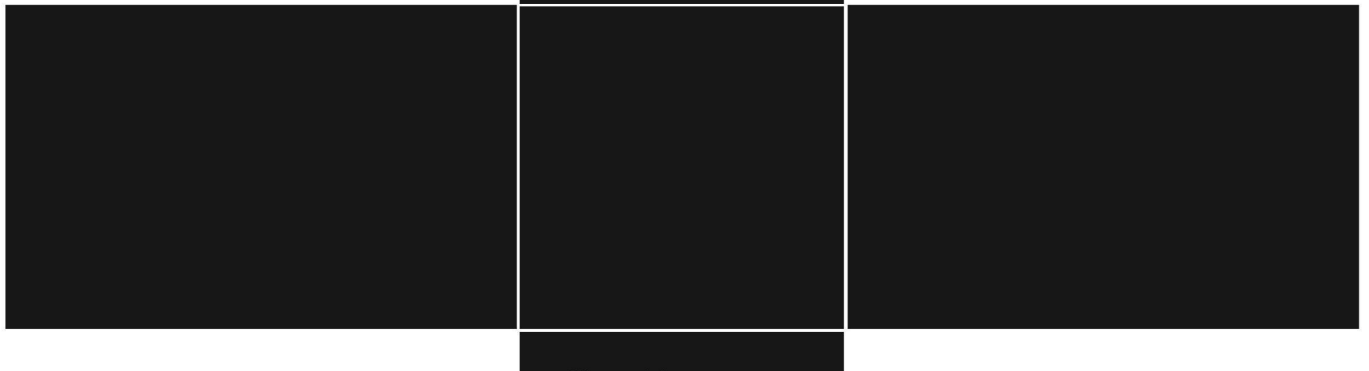
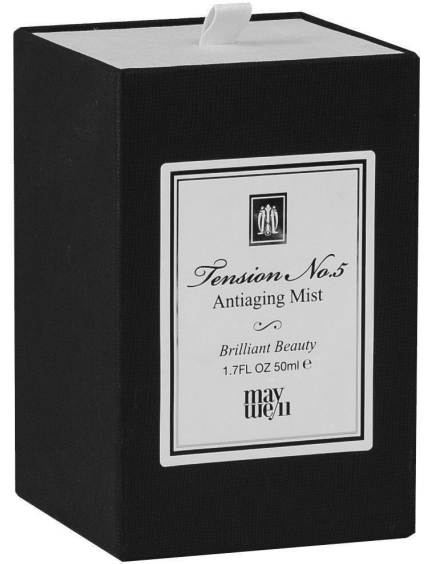
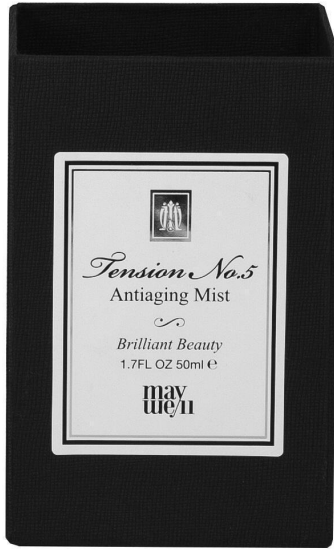
spray it on your face five times and on your neck three times again and let it absorb into the skin.

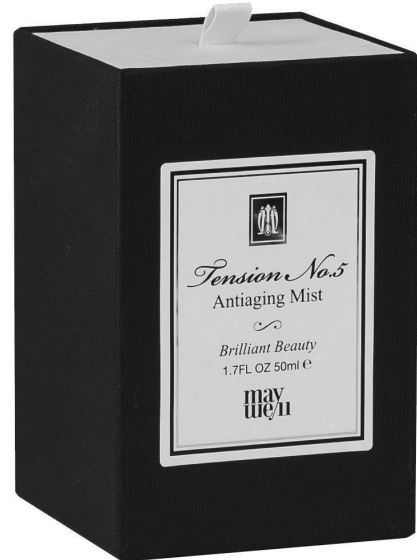
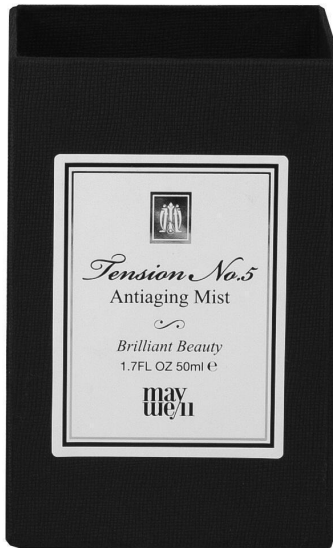
DOSAGE & ADMINISTRATION

Dosage & Administration: Five times in the face, neck three times

PACKAGE LABEL.PRINCIPAL DISPLAY PANEL







TENSION NO. 5

with hazel cream

Product Information

Product Type

HUMAN OTC DRUG

Item Code (Source)

NDC:69628-010

Route of Administration

TOPICAL

Active Ingredient/Active Moiety				
Ingredient Name		Basis of Strength	Strength	
WITCH HAZEL (UNII: 10 114J0 U34) (WITCH HAZEL - UNII:10 114J0 U34)		WITCH HAZEL	0.0001 mg in 50 mL	
Inactive Ingredients				
Ingredient Name			Strength	
WATER (UNII: 059QF0K00R)				
BUTYLENE GLYCOL (UNII: 3XUS85K0RA)				
Packaging				
#	Item Code	Package Description	Marketing Start Date	Marketing End Date
1	NDC:69628-010-01	50 mL in 1 CARTON; Type 0: Not a Combination Product	03/01/2015	
Marketing Information				
Marketing Category	Application Number or Monograph Citation	Marketing Start Date	Marketing End Date	
OTC monograph final	part347	03/01/2015		

Labeler - Maywell Co., Ltd. (689512503)

Registrant - Maywell Co., Ltd. (689512503)

Establishment

Name	Address	ID/FEI	Business Operations
Kolmar Korea Co.,LTD. Gwanjeong Factory		689512611	manufacture(69628-010)

Revised: 12/2019

Maywell Co., Ltd.