

ANTI DIARRHEAL- loperamide hcl tablet
Chain Drug Marketing Association, Inc.

Quality Choice 44-375

Active ingredient (in each caplet)

Loperamide HCl 2 mg

Purpose

Anti-diarrheal

Use

controls symptoms of diarrhea, including Travelers' Diarrhea

Warnings

Allergy alert: Do not use if you have ever had a rash or other allergic reaction to loperamide HCl

Heart alert: Taking more than directed can cause serious heart problems or death

Do not use

if you have bloody or black stool

Ask a doctor before use if you have

- fever
- mucus in the stool
- a history of liver disease
- a history of abnormal heart rhythm

Ask a doctor or pharmacist before use if you are

taking a prescription drug. Loperamide may interact with certain prescription drugs.

When using this product

tiredness, drowsiness or dizziness may occur. Be careful when driving or operating machinery.

Stop use and ask a doctor if

- symptoms get worse
- diarrhea lasts for more than 2 days
- you get abdominal swelling or bulging. These may be signs of a serious condition.

If pregnant or breast-feeding,

ask a health professional before use.

Keep out of reach of children.

In case of overdose, get medical help or contact a Poison Control Center right away.

Directions

- **drink plenty of clear fluids to help prevent dehydration caused by diarrhea**
- find right dose on chart. If possible, use weight to dose; otherwise, use age.

adults and children 12 years and over	2 caplets after the first loose stool; 1 caplet after each subsequent loose stool; but no more than 4 caplets in 24 hours
children 9-11 years (60-95 lbs)	1 caplet after the first loose stool; 1/2 caplet after each subsequent loose stool; but no more than 3 caplets in 24 hours
children 6-8 years (48-59 lbs)	1 caplet after the first loose stool; 1/2 caplet after each subsequent loose stool; but no more than 2 caplets in 24 hours
children 2-5 years (34 to 47 lbs)	ask a doctor
children under 2 years (up to 33 lbs)	do not use

Other information

- **each caplet contains:** calcium 15 mg
- **TAMPER EVIDENT: DO NOT USE IF OUTER PACKAGE IS OPENED OR BLISTER IS TORN OR BROKEN**
- store between 20^o-25^oC (68^o-77^oF)
- see end flap for expiration date and lot number

Inactive ingredients

corn starch, D&C yellow #10 aluminum lake, dibasic calcium phosphate dihydrate, FD&C blue #1 aluminum lake, magnesium stearate, microcrystalline cellulose, silicon dioxide

Questions or comments?

Call 1-800-426-9391 8:30 AM-4:00 PM ET, Monday-Friday

Principal Display Panel

QC[®]
QUALITY
CHOICE

NDC 83324-064-12

*Compare to the
Active Ingredient in
Imodium[®] A-D

Anti-Diarrheal

Loperamide HCl Tablets, 2 mg
Anti-Diarrheal
Controls the Symptoms of Diarrhea

Actual Size

12 Caplets

**TAMPER EVIDENT: DO NOT USE IF PACKAGE IS OPENED OR IF BLISTER
UNIT IS TORN, BROKEN OR SHOWS ANY SIGNS OF TAMPERING**

1. To open, tear
at perforations and
remove a section.

2. Use ✂ to cut
through plastic
for caplet.

*This product is not manufactured or distributed by
Kenvue Inc., owner of the registered trademark IMODIUM[®] A-D.

50844 REV0325D37502

SATISFACTION

100%

QC[®]
GUARANTEED

Distributed by CDMA, Inc.
Novi, MI 48375
www.qualitychoice.com
Questions: 800-935-2362

Drug Facts
Active ingredient (in each caplet) Loperamide HCl 2 mg
Purpose Anti-diarrheal
Use controls symptoms of diarrhea, including Traveler's Diarrhea

KEEP OUTER PACKAGE FOR COMPLETE PRODUCT INFORMATION

NDC 83324-064-12



*Compare to the Active Ingredient in Imodium® A-D

Anti-Diarrheal

Loperamide HCl Tablets, 2 mg

Anti-Diarrheal

Controls the Symptoms of Diarrhea



Actual Size

12 Caplets

- To open, tear at perforations and remove a section.
- Use to cut through plastic for caplet.

*This product is not manufactured or distributed by Kenvue Inc., owner of the registered trademark IMODIUM® A-D.
 50844 REV0325D37502

Distributed by CDMIA, Inc.
 Novi, MI 48375
www.qualitychoice.com
 Questions: 800-935-2362



No Print / No Varnish
 Lot no. & Exp. date

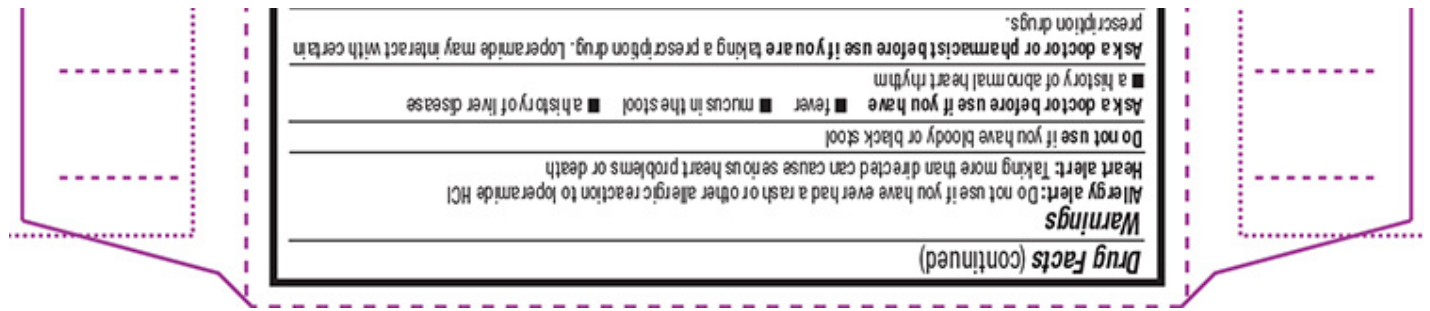
TAMPER EVIDENT: DO NOT USE IF PACKAGE IS OPENED OR IF BLISTER UNIT IS TORN, BROKEN OR SHOWS ANY SIGNS OF TAMPERING



Drug Facts (continued)
 ■ store between 20°-25°C (68°-77°F) ■ see end flap for expiration date and lot number
Inactive ingredients corn starch, D&C yellow #10 aluminum lake, dibasic calcium phosphate dihydrate, FD&C blue #1 aluminum lake, magnesium stearate, microcrystalline cellulose, silicon dioxide
Questions or comments? Call 1-800-426-9391 8:30 AM-4:00 PM ET, Monday-Friday

Other information ■ each caplet contains: calcium 15 mg
 ■ TAMPER EVIDENT: DO NOT USE IF OUTER PACKAGE IS OPENED OR BLISTER IS TORN OR BROKEN
Directions ■ drink plenty of clear fluids to help prevent dehydration caused by diarrhea
 ■ find right dose on chart. If possible, use weight to dose; otherwise, use age.
 adults and children 12 years and over 2 caplets after the first loose stool; 1 caplet after each subsequent loose stool; but no more than 4 caplets in 24 hours
 children 9-11 years (60-95 lbs) 1 caplet after the first loose stool; 1/2 caplet after each subsequent loose stool; but no more than 3 caplets in 24 hours
 children 6-8 years (48-59 lbs) 1 caplet after the first loose stool; 1/2 caplet after each subsequent loose stool; but no more than 2 caplets in 24 hours
 children 2-5 years (34 to 47 lbs) ask a doctor
 children under 2 years (up to 33 lbs) do not use
Stop use and ask a doctor if ■ symptoms get worse ■ diarrhea lasts for more than 2 days
 ■ you get abdominal swelling or binging. These may be signs of a serious condition.
 If pregnant or breast-feeding, ask a health professional before use.
 Keep out of reach of children. In case of overdose, get medical help or contact a Poison Control Center right away.
 When using this product tiredness, drowsiness or dizziness may occur. Be careful when driving or operating machinery.

B-0220-375-02-R
 REV0325D37502



Quality Choice 44-375

ANTI DIARRHEAL

loperamide hcl tablet

Product Information

Product Type	HUMAN OTC DRUG	Item Code (Source)	NDC:83324-064
Route of Administration	ORAL		

Active Ingredient/Active Moiety

Ingredient Name	Basis of Strength	Strength
LOPERAMIDE HYDROCHLORIDE (UNII: 77TI35393C) (LOPERAMIDE - UNII:6X9OC3H4II)	LOPERAMIDE HYDROCHLORIDE	2 mg

Inactive Ingredients

Ingredient Name	Strength
STARCH, CORN (UNII: O8232NY3SJ)	
D&C YELLOW NO. 10 ALUMINUM LAKE (UNII: CQ3XH3DET6)	
DIBASIC CALCIUM PHOSPHATE DIHYDRATE (UNII: O7TSZ97GEP)	
FD&C BLUE NO. 1 ALUMINUM LAKE (UNII: J9EQA3S2JM)	
MAGNESIUM STEARATE (UNII: 70097M6I30)	
MICROCRYSTALLINE CELLULOSE (UNII: OP1R32D61U)	
SILICON DIOXIDE (UNII: ETJ7Z6XBU4)	

Product Characteristics

Color	green	Score	2 pieces
Shape	OVAL	Size	10mm
Flavor		Imprint Code	44;375
Contains			

Packaging

#	Item Code	Package Description	Marketing Start Date	Marketing End Date
1	NDC:83324-064-12	2 in 1 CARTON	06/17/2024	
1		6 in 1 BLISTER PACK; Type 0: Not a Combination		

1		Product	
2	NDC:83324-064-24	4 in 1 CARTON	06/17/2024
2		6 in 1 BLISTER PACK; Type 0: Not a Combination Product	

Marketing Information

Marketing Category	Application Number or Monograph Citation	Marketing Start Date	Marketing End Date
ANDA	ANDA076497	06/17/2024	

Labeler - Chain Drug Marketing Association, Inc. (011920774)

Establishment

Name	Address	ID/FEI	Business Operations
LNK International, Inc.		832867837	manufacture(83324-064) , pack(83324-064)

Establishment

Name	Address	ID/FEI	Business Operations
LNK International, Inc.		117025878	manufacture(83324-064)

Revised: 5/2026

Chain Drug Marketing Association, Inc.