

IBUPROFEN 200 MG- ibuprofen tablet, coated
R J General Corporation

Advil

Ibuprofen Tablets, 200mg
Pain Reliever/Fever Reducer(NSAID)

Drug facts

<i>Active ingredients (in each tablet)</i>	<i>Purpose</i>
Ibuprofen 200 mg (NSAID) *	Pain reliever/Fever reducer

* nonsteroidal anti-inflammatory drug

Uses

- temporarily relieves minor aches and pains due to:
 - headache
 - toothache
 - backache
 - menstrual cramps
 - the common cold
 - muscular aches
 - minor pain of arthritis
- temporarily reduces fever

Warnings

Allergy alert:Ibuprofen may cause a severe allergic reaction, especially in people allergic to aspirin. Symptoms may include:

- hives
- facial swelling
- asthma (wheezing)
- shock
- skin reddening
- rash
- blisters

If an allergic reaction occurs, stop use and seek medical help right away.

Stomach bleeding warning:

This product contains an NSAID, which may cause severe stomach bleeding. The chance

is higher if you

- are age 60 or older
- have had stomach ulcers or bleeding problems
- take a blood thinning (anticoagulant) or steroid drug
- take other drugs containing prescription or nonprescription NSAIDs [aspirin, ibuprofen, naproxen, or others]
- have 3 or more alcoholic drinks every day while using this product
- take more or for a longer time than directed

Heart attack and stroke warning: NSAIDs, except aspirin, increase the risk of heart failure, and stroke. These can be fatal. The risk is higher if you use more than directed or for longer than directed.

Do not use

- if you have ever had an allergic reaction to any other pain reliever/fever reducer
- right before or after heart surgery

Ask a doctor before use if

- stomach bleeding warning applies to you
- you have problems or serious side effects from taking pain relievers or fever reducers
- you have a history of stomach problems, such as heartburn
- you have high blood pressure, heart disease, liver cirrhosis, kidney disease, asthma, or had a stroke
- you are taking a diuretic

Ask a doctor or pharmacist before use if you are

- under a doctor's care for any serious condition
- taking aspirin for heart attack or stroke, because ibuprofen may decrease this benefit of aspirin
- taking any other drug

When using this product

- take with food or milk if stomach upset occurs

Stop use and ask a doctor if

- you experience any of the following signs of stomach bleeding:
 - feel faint
 - vomit blood
 - have bloody or black stools
 - have stomach pain that does not get better
- you have symptoms of heart problem or stroke:
 - chest pain
 - trouble breathing
 - weakness in one part or side of body
 - slurred speech
 - leg swelling

- pain gets worse or lasts more than 10 days
- fever gets worse or lasts more than 3 days
- redness or swelling is present in the painful area
- any new symptoms appear

If pregnant or breast-feeding, ask a health professional before use. It is especially important not to use ibuprofen at 20 weeks or later in pregnancy unless definitely directed to do so by a doctor because it may cause problems in the unborn child or complications during delivery.

Keep out of reach of children.

In case of overdose, get medical help or contact a Poison Control Center right away.

Directions

- **do not take more than directed**
- **the smallest effective dose should be used**
- adults and children 12 years and over: take 1 tablet every 4 to 6 hours while symptoms persist
- if pain or fever does not respond to 1 tablet, 2 tablets may be used
- do not exceed 6 tablets in 24 hours, unless directed by a doctor
- children under 12 years: ask a doctor

Other information

- read all warnings and directions before use. Keep Carton.
- store at 20-25°C (68-77°F)
- avoid excessive heat above 40°C (104°F)

Inactive ingredients

acetylated monoglycerides, colloidal silicon dioxide, corn starch, croscarmellose sodium, methylparaben, microcrystalline cellulose, pharmaceutical glaze, pharmaceutical ink, povidone, pregelatinized starch, propylparaben, sodium benzoate, sodium lauryl sulfate, stearic acid, sucrose, synthetic iron oxide, titanium dioxide, white wax

Questions or Comments?

Call toll free **1-800-88-ADVIL**

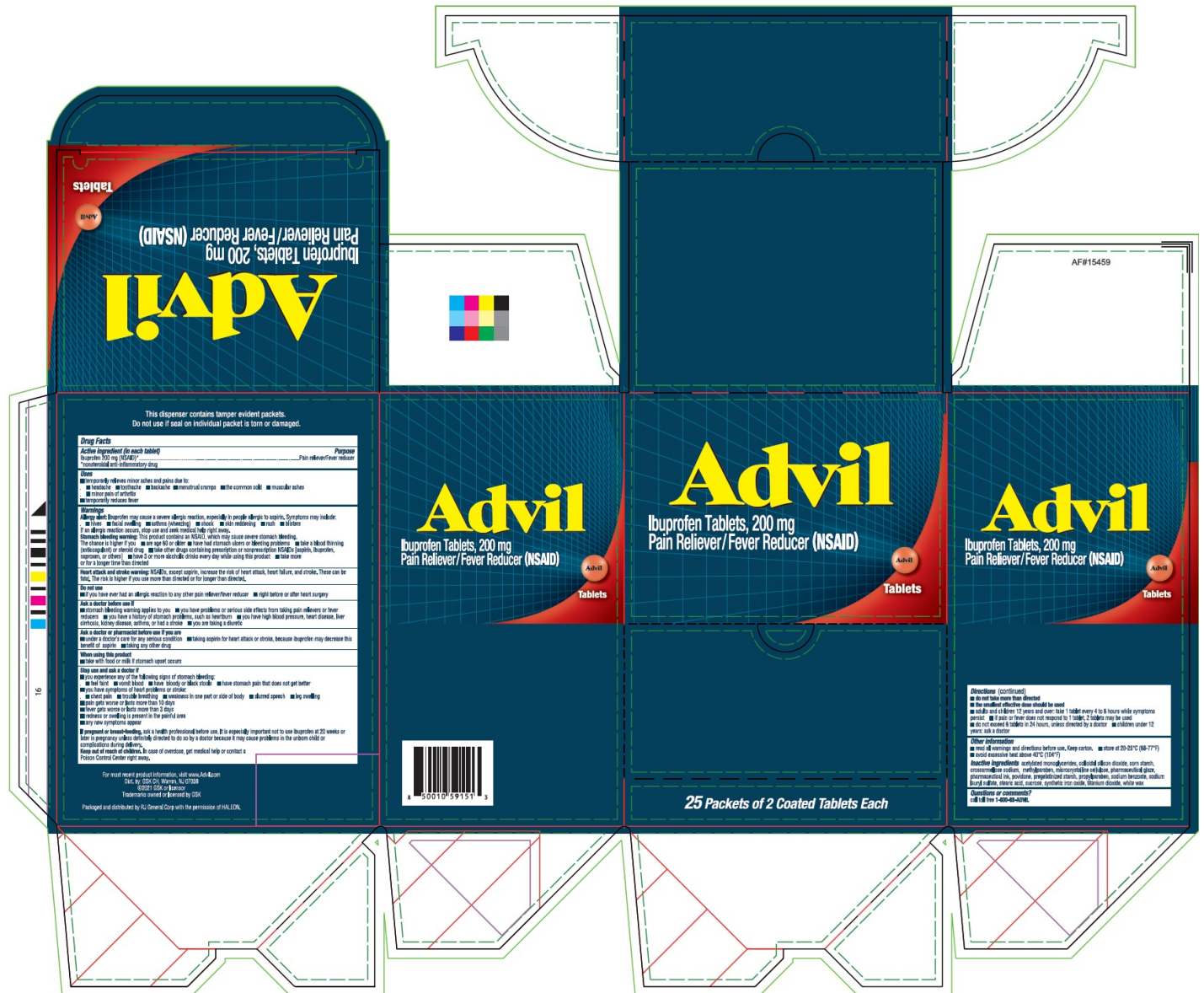
Distributed by:

GSK CH, Warren,
NJ 07059

Packaged and distributed by RJ Corp with the permission of HALEON.

PRINCIPAL DISPLAY PANEL

Ibuprofen Tablets 200 mg - NDC 70264-041-01 - Carton Label



IBUPROFEN 200 MG

ibuprofen tablet, coated

Product Information

Product Type	HUMAN OTC DRUG	Item Code (Source)	NDC: 70264-041(NDC:0573-0150)
Route of Administration	ORAL		

Active Ingredient/Active Moiety

Ingredient Name	Basis of Strength	Strength
IBUPROFEN (UNII: WK2XYI10QM) (IBUPROFEN - UNII:WK2XYI10QM)	IBUPROFEN	200 mg

Inactive Ingredients

Ingredient Name	Strength
DIACETYLATED MONOGLYCERIDES (UNII: 5Z17386USF)	
SILICON DIOXIDE (UNII: ETJ7Z6XBU4)	
STARCH, CORN (UNII: O8232NY3SJ)	
CROSCARMELOSE SODIUM (UNII: M28OL1HH48)	
METHYLPARABEN (UNII: A2I8C7HI9T)	
MICROCRYSTALLINE CELLULOSE (UNII: OP1R32D61U)	
SHELLAC (UNII: 46N107B71O)	
ALCOHOL (UNII: 3K9958V90M)	
POVIDONE (UNII: FZ989GH94E)	
PROPYLPARABEN (UNII: Z8IX2SC1OH)	
SODIUM BENZOATE (UNII: OJ245FE5EU)	
SODIUM LAURYL SULFATE (UNII: 368GB5141J)	
STEARIC ACID (UNII: 4ELV7Z65AP)	
SUCROSE (UNII: C151H8M554)	
FERRIC OXIDE RED (UNII: 1K09F3G675)	
TITANIUM DIOXIDE (UNII: 15FIX9V2JP)	
WHITE WAX (UNII: 7G1J5DA97F)	

Product Characteristics

Color	brown (pinkish brown)	Score	no score
Shape	ROUND	Size	11mm
Flavor		Imprint Code	Advil
Contains			

Packaging

#	Item Code	Package Description	Marketing Start Date	Marketing End Date
1	NDC:70264-041-01	25 in 1 CARTON	11/01/2024	
1		2 in 1 POUCH; Type 0: Not a Combination Product		

Marketing Information

Marketing Category	Application Number or Monograph Citation	Marketing Start Date	Marketing End Date
OTC Monograph Drug	M013	11/01/2024	

Labeler - R J General Corporation (122542830)

Establishment

Name	Address	ID/FEI	Business Operations
R J General Corporation		122542830	repack(70264-041)

