

ANTI DIARRHEAL- loperamide hcl tablet
Yyba Corp

Welmate 44-375

Active ingredient (in each caplet)

Loperamide HCl 2 mg

Purpose

Anti-diarrheal

Use

controls symptoms of diarrhea, including Travelers' Diarrhea

Warnings

Allergy alert: Do not use if you have ever had a rash or other allergic reaction to loperamide HCl

Heart alert: Taking more than directed can cause serious heart problems or death

Do not use

if you have bloody or black stool

Ask a doctor before use if you have

- fever
- mucus in the stool
- a history of liver disease
- a history of abnormal heart rhythm

Ask a doctor or pharmacist before use if you are

taking a prescription drug. Loperamide may interact with certain prescription drugs.

When using this product

tiredness, drowsiness or dizziness may occur. Be careful when driving or operating machinery.

Stop use and ask a doctor if

- symptoms get worse
- diarrhea lasts for more than 2 days
- you get abdominal swelling or bulging. These may be signs of a serious condition.

If pregnant or breast-feeding,

ask a health professional before use.

Keep out of reach of children.

In case of overdose, get medical help or contact a Poison Control Center right away.

Directions

- **drink plenty of clear fluids to help prevent dehydration caused by diarrhea**
- find right dose on chart. If possible, use weight to dose; otherwise, use age.

adults and children 12 years and over	2 caplets after the first loose stool; 1 caplet after each subsequent loose stool; but no more than 4 caplets in 24 hours
children 9-11 years (60-95 lbs)	1 caplet after the first loose stool; 1/2 caplet after each subsequent loose stool; but no more than 3 caplets in 24 hours
children 6-8 years (48-59 lbs)	1 caplet after the first loose stool; 1/2 caplet after each subsequent loose stool; but no more than 2 caplets in 24 hours
children 2-5 years (34 to 47 lbs)	ask a doctor
children under 2 years (up to 33 lbs)	do not use

Other information

- **each caplet contains:** calcium 15 mg
- **TAMPER EVIDENT: DO NOT USE IF OUTER PACKAGE IS OPENED OR BLISTER IS TORN OR BROKEN**
- store between 20°-25°C (68°-77°F)
- see end flap for expiration date and lot number

Inactive ingredients

corn starch, D&C yellow #10 aluminum lake, dibasic calcium phosphate dihydrate, FD&C blue #1 aluminum lake, magnesium stearate, microcrystalline cellulose, silicon dioxide

Questions or comments?

Call toll-free 866-933-6337

Principal Display Panel

NDC 73581-171-24

Compare to the active ingredient

in **Imodium® A-D†**

Anti-Diarrheal Caplets

Loperamide HCl Tablets, 2 mg

Anti-Diarrheal

- controls symptoms of diarrhea
- suitable for adults and children
6 years and over

Actual Size

welmate™

24 Caplets*

*Capsule-Shaped Tablets

**TAMPER EVIDENT: DO NOT USE IF
PACKAGE IS OPENED OR IF
BLISTER UNIT IS TORN, BROKEN
OR SHOWS ANY SIGNS OF
TAMPERING**

1. To open, tear
at perforations and
remove a section.

2. Use ✂ to cut
through plastic
for caplet.

†This product is not manufactured or distributed by Kenvue Inc.,
owner of the registered trademark Imodium® A-D.

Distributed by: **Wellspring** Airmont, NY 10952, USA 50844 ORG032537508

Why pay more?

wellspringmeds.com

NDC 73581-171-24

Compare to the active ingredient
in Imodium® A-D†

Anti-Diarrheal Caplets

Loperamide HCl Tablets, 2 mg

Anti-Diarrheal

controls symptoms of diarrhea

Drug Facts

KEEP OUTER PACKAGE FOR COMPLETE PRODUCT INFORMATION

Active ingredient (in each caplet)

Loperamide HCl 2 mg... Anti-diarrheal

Purpose

Use controls symptoms of diarrhea, including Travelers' Diarrhea

Drug Facts (continued)

Warnings
Allergy alert: Do not use if you have ever had a rash or other allergic reaction to loperamide HCl
Heart alert: Taking more than directed can cause serious heart problems or death
Do not use if you have bloody or black stool
Ask a doctor before use if you have fever ■ mucus in the stool ■ a history of liver disease
Ask a doctor or pharmacist before use if you are taking a prescription drug. Loperamide may interact with certain prescription drugs.

When using this product tiredness, drowsiness or dizziness may occur. Be careful when driving or operating machinery.
Stop use and ask a doctor if ■ symptoms get worse ■ diarrhea lasts for more than 2 days
■ you get abdominal swelling or bloating. These may be signs of a serious condition.
If pregnant or breast-feeding, ask a health professional before use.
Keep out of reach of children. In case of overdose, get medical help or contact a Poison Control Center right away.

Directions
■ drink plenty of clear fluids to help prevent dehydration caused by diarrhea.
■ find right dose on chart. If possible, use weight to dose; otherwise, use age.

adults and children 12 years and over	2 caplets after the first loose stool; 1 caplet after each subsequent loose stool; but no more than 4 caplets in 24 hours
children 9-11 years (60-95 lbs)	1 caplet after the first loose stool; 1/2 caplet after each subsequent loose stool; but no more than 3 caplets in 24 hours
children 6-8 years (48-59 lbs)	1 caplet after the first loose stool; 1/2 caplet after each subsequent loose stool; but no more than 2 caplets in 24 hours
children 2-5 years (34 to 47 lbs)	ask a doctor
children under 2 years (up to 33 lbs)	do not use

Other information
■ each caplet contains: calcium 15 mg
■ TAMPER EVIDENT: DO NOT USE IF OUTER PACKAGE IS OPENED OR BLISTER IS TORN OR BROKEN

Drug Facts (continued)

■ store between 20°-25°C (68°-77°F) ■ see end flap for expiration date and lot number

Inactive ingredients
FD&C blue #1 aluminum lake, magnesium stearate, microcrystalline cellulose, silicon dioxide

Questions or comments? Call 1-800-426-9391 & 30 AM-4:00 PM ET, Monday-Friday

Why pay more?
wellspringmeds.com

TAMPER EVIDENT: DO NOT USE IF PACKAGE IS OPENED OR IF BLISTER UNIT IS TORN, BROKEN OR SHOWS ANY SIGNS OF TAMPERING



1. To open, tear at perforations and remove a section.



2. Use 1/2 to cut through plastic for caplet.

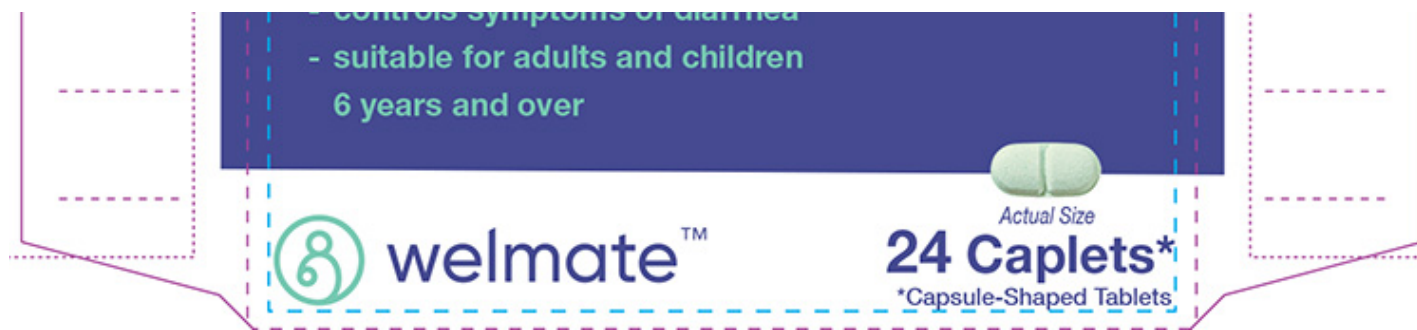
Distributed by: WellSpring Almont, NY 10852, USA

† This product is not manufactured or distributed by Kenvue Inc., owner of the registered trademark Imodium® A-D. 50844 ORG032537508

No print/No varnish
Lot & Exp date



B-1365-375-08-W
ORG032537508



Welmate 44-375 REV0325

ANTI DIARRHEAL

loperamide hcl tablet

Product Information

Product Type	HUMAN OTC DRUG	Item Code (Source)	NDC:73581-171
Route of Administration	ORAL		

Active Ingredient/Active Moiety

Ingredient Name	Basis of Strength	Strength
LOPERAMIDE HYDROCHLORIDE (UNII: 77TI35393C) (LOPERAMIDE - UNII:6X9OC3H4II)	LOPERAMIDE HYDROCHLORIDE	2 mg

Inactive Ingredients

Ingredient Name	Strength
STARCH, CORN (UNII: O8232NY3SJ)	
D&C YELLOW NO. 10 ALUMINUM LAKE (UNII: CQ3XH3DET6)	
DIBASIC CALCIUM PHOSPHATE DIHYDRATE (UNII: O7TSZ97GEP)	
FD&C BLUE NO. 1 ALUMINUM LAKE (UNII: J9EQA3S2JM)	
MAGNESIUM STEARATE (UNII: 70097M6I30)	
MICROCRYSTALLINE CELLULOSE (UNII: OP1R32D61U)	
SILICON DIOXIDE (UNII: ETJ7Z6XBU4)	

Product Characteristics

Color	green	Score	2 pieces
Shape	OVAL	Size	10mm
Flavor		Imprint Code	44;375
Contains			

Packaging

#	Item Code	Package Description	Marketing Start Date	Marketing End Date
1	NDC:73581-171-24	4 in 1 CARTON	02/21/2024	

1	6 in 1 BLISTER PACK; Type 0: Not a Combination Product		
Marketing Information			
Marketing Category	Application Number or Monograph Citation	Marketing Start Date	Marketing End Date
ANDA	ANDA076497	02/21/2024	

Labeler - Yyba Corp (006339772)

Establishment			
Name	Address	ID/FEI	Business Operations
LNK International, Inc.		832867837	manufacture(73581-171) , pack(73581-171)

Establishment			
Name	Address	ID/FEI	Business Operations
LNK International, Inc.		117025878	manufacture(73581-171)