

COLGATE MAXFRESH COOL MINT- sodium fluoride gel, dentifrice
Colgate-Palmolive Company

Colgate® MaxFresh® Cool Mint

Drug Facts

Active ingredient

Sodium Fluoride 0.24% (0.14% w/v fluoride ion)

Purpose

Anticavity

Use

helps protect against cavities

Warnings

Keep out of reach of children under 6 years of age.

If more than used for brushing is accidentally swallowed, get medical help or contact a Poison Control Center right away.

Directions

adults and children 2 years of age and older	brush teeth thoroughly, preferably after each meal or at least twice a day, or as directed by a dentist or physician
children 2 to 6 years	use only a pea sized amount and supervise child's brushing and rinsing (to minimize swallowing)
children under 2 years	ask a dentist or physician

Inactive ingredients

Sorbitol, Water, Hydrated Silica, Sodium Lauryl Sulfate, Flavor, PEG-12, Cellulose Gum, Glycerin, Cocamidopropyl Betaine, Sodium Saccharin, Hydroxypropyl Methylcellulose, Blue 1, Titanium Dioxide.

Questions?

1-800-468-6502

**DIST. BY:
COLGATE-PALMOLIVE COMPANY,
NEW YORK, NY 10022 USA**

PRINCIPAL DISPLAY PANEL - 198 g Tube Carton

Colgate®
Anticavity Fluoride Toothpaste

MaxFresh®

FRESHNESS POWERED BY
ULTRA FREEZE

10X LONGER LASTING COOL FOR FRESH BREATH†

Cool Mint
with BREATH STRIPS

NET WT 7 OZ (198 g)

Colgate[®]

Anticavity Fluoride Toothpaste

Cool Mint
WITH BREATH STRIPS

NET WT 7 OZ (198 g)

MaxFresh[®]

FRESHNESS POWERED BY
ULTRAFREEZE
10X LONGER LASTING COOL FOR FRESH BREATH¹

Colgate[®]

Anticavity Fluoride Toothpaste

Cool Mint
WITH BREATH STRIPS

NET WT 7 OZ (198 g)

MaxFresh[®]

FRESHNESS POWERED BY
ULTRAFREEZE
10X LONGER LASTING COOL FOR FRESH BREATH¹

Colgate[®]

MaxFresh

EXPERIENCE **ULTRAFREEZE**

RELEASES AN
INSTANT BLAST
OF FRESHNESS

INVIGORATES
YOUR BRUSHING
EXPERIENCE

BURSTING WITH
FRESHNESS THAT
LASTS FOR HOURS

1 vs. a regular Colgate fluoride toothpaste

Drug Facts

Active Ingredient
Sodium Fluoride 0.24% (0.14% w/v fluoride ion)..... Anticavity

Use helps protect against cavities

Warnings

Keep out of reach of children under 6 years of age.
If more than used for brushing is accidentally swallowed,
get medical help or contact a Poison Control Center right away.

Drug Facts (continued)

Directions
adults and children 2 years of age and older brush teeth thoroughly, preferably after each meal or at least twice a day, or as directed by a dentist or physician
children 2 to 6 years use only a pea sized amount and supervise child's brushing and rinsing (to minimize swallowing)
children under 2 years ask a dentist or physician

Inactive Ingredients Sorbitol, Water, Hydrated Silica, Sodium Lauryl Sulfate, Flavor, PEG-12, Cellulose Gum, Glycerin, Cocamidopropyl Betaine, Sodium Saccharin, Hydroxypropyl Methylcellulose, Blue 1, Titanium Dioxide.

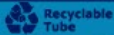
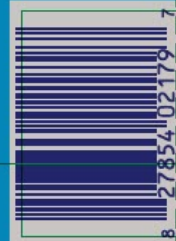
Questions? 1-800-468-6502

www.colgate.com/maxfresh
COLGATE-PALMOLIVE
MKT. BY:
COLGATE-PALMOLIVE COMPANY,
NEW YORK, NY 10022 USA

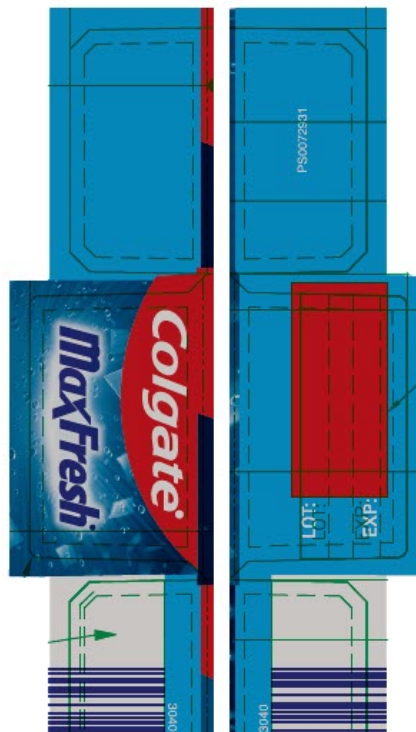
GLUTEN FREE

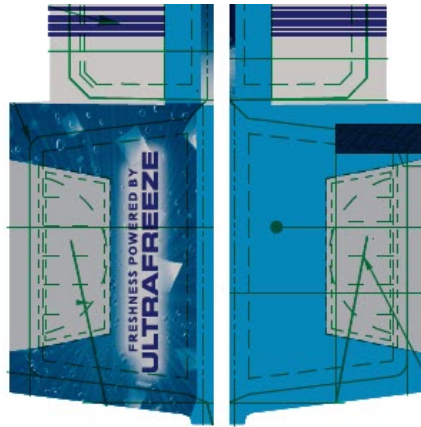
smartlabel[®]

app enabled



Your community may not yet accept tubes for recycling.
Check locally. Learn more at colgate.com/goodness





COLGATE MAXFRESH COOL MINT

sodium fluoride gel, dentifrice

Product Information

Product Type	HUMAN OTC DRUG	Item Code (Source)	NDC:35000-211
Route of Administration	DENTAL		

Active Ingredient/Active Moiety

Ingredient Name	Basis of Strength	Strength
SODIUM FLUORIDE (UNII: 8ZYQ1474W7) (FLUORIDE ION - UNII:Q80VPU4080)	FLUORIDE ION	1.1 mg in 1 g

Inactive Ingredients

Ingredient Name	Strength
SORBITOL (UNII: 506T60A25R)	
WATER (UNII: 059QF0KO0R)	
HYDRATED SILICA (UNII: Y607T4G8P9)	
SODIUM LAURYL SULFATE (UNII: 368GB5141J)	
POLYETHYLENE GLYCOL 600 (UNII: NL4J9F21N9)	
CARBOXYMETHYLCELLULOSE SODIUM, UNSPECIFIED (UNII: K679OBS311)	
GLYCERIN (UNII: PDC6A3C0OX)	
COCAMIDOPROPYL BETAINE (UNII: 5OCF3011KX)	
SACCHARIN SODIUM (UNII: SB8ZUX40TY)	
HYPROMELLOSE, UNSPECIFIED (UNII: 3NXW29V3WO)	
FD&C BLUE NO. 1 (UNII: H3R47K3TBD)	
TITANIUM DIOXIDE (UNII: 15FIX9V2JP)	

Product Characteristics

Color	BLUE	Score	
Shape		Size	
Flavor	MINT	Imprint Code	
Contains			

Packaging

#	Item Code	Package Description	Marketing Start Date	Marketing End Date
1	NDC:35000-211-54	1 in 1 CARTON	12/01/2024	
1		198 g in 1 TUBE; Type 0: Not a Combination Product		

Marketing Information

Marketing Category	Application Number or Monograph Citation	Marketing Start Date	Marketing End Date
OTC MONOGRAPH DRUG	M021	12/01/2024	

Labeler - Colgate-Palmolive Company (001344381)

Revised: 11/2024

Colgate-Palmolive Company