

COLGATE SENSITIVE PREVENT AND REPAIR- potassium nitrate and sodium fluoride paste, dentifrice

Colgate-Palmolive

Disclaimer: Most OTC drugs are not reviewed and approved by FDA, however they may be marketed if they comply with applicable regulations and policies. FDA has not evaluated whether this product complies.

Colgate® Sensitive Prevent & Repair

Drug Facts

Active ingredients	Purpose
Potassium Nitrate 5%	Antisensitivity
Sodium Fluoride 0.24% (0.14% w/v fluoride ion)	Anticavity

Uses

- builds increasing protection against painful sensitivity of the teeth to cold, heat, acids, sweets or contact
- helps protect against cavities

Warnings

When using this product, if pain/sensitivity still persists after 4 weeks of use, please visit your dentist.

Stop use and ask a dentist if the problem persists or worsens. Sensitive teeth may indicate a serious problem that may need prompt care by a dentist.

Keep out of reach of children. If more than used for brushing is accidentally swallowed, get medical help or contact a Poison Control Center right away.

Directions

adults and children 12 years of age and older	apply at least a 1-inch strip of the product onto a soft bristle toothbrush. Brush teeth thoroughly for at least 1 minute twice a day (morning and evening) or as recommended by a dentist or physician. Make sure to brush all sensitive areas of the teeth.
children under 12 years	consult a dentist or physician

Inactive ingredients

Water, Glycerin, Hydrated Silica, Sorbitol, PEG-12, PVM/MA Copolymer, Sodium Lauryl Sulfate, Flavor, Trisodium Phosphate, Poloxamer 407, Sodium Hydroxide, Sodium Saccharin, Cellulose Gum, Xanthan Gum, Titanium Dioxide.

Questions?

1-800-468-6502

Dist. by:

COLGATE-PALMOLIVE COMPANY

New York, NY 10022 U.S.A.

PRINCIPAL DISPLAY PANEL - 170 g Tube Carton

Colgate®

Anticavity Toothpaste for Sensitive Teeth

ADVANCED DUAL ACTION FORMULA

HELPS □ PREVENT SENSITIVITY □ REPAIR WEAKENED ENAMEL

MAXIMUM STRENGTH*

Sensitive

PREVENT & REPAIR

+ WHITENING

NET WT 6.0 OZ (170 g)

GENTLE MINT

paste

Colgate®

Anticavity Toothpaste for Sensitive Teeth

MAXIMUM STRENGTH*

Sensitive

PREVENT & REPAIR

+ WHITENING

NET WT 6.0 OZ (170 g)

GENTLE MINT 



ADVANCED DUAL ACTION FORMULA
HELPS ✓ PREVENT SENSITIVITY ✓ REPAIR WEAKENED ENAMEL



Colgate®

Anticavity Toothpaste for Sensitive Teeth

MAXIMUM STRENGTH*

Sensitive

PREVENT & REPAIR

+ WHITENING

NET WT 6.0 OZ (170 g)

GENTLE MINT 



ADVANCED DUAL ACTION FORMULA
HELPS ✓ PREVENT SENSITIVITY ✓ REPAIR WEAKENED ENAMEL



Drug Facts

Active ingredients

Potassium Nitrate 5%.....Antisensitivity
Sodium Fluoride 0.24% (0.14% w/v fluoride ion).....Anticavity

Purpose

Antisensitivity
Anticavity

Uses

- builds increasing protection against painful sensitivity of the teeth to cold, heat, acids, sweets or contact
- helps protect against cavities

Warnings

When using this product, if pain/sensitivity still persists after 4 weeks of use, please visit your dentist.

Stop use and ask a dentist if the problem persists or worsens. Sensitive teeth may indicate a serious problem that may need prompt care by a dentist.

Keep out of reach of children. If more than used for brushing is accidentally swallowed, get medical help or contact a Poison Control Center right away.

Drug Facts (continued)

Directions

adults and children 12 years of age and older

apply at least a 1-inch strip of the product onto a soft bristle toothbrush. Brush teeth thoroughly for at least 1 minute twice a day (morning and evening) or as recommended by a dentist or physician. Make sure to brush all sensitive areas of the teeth.

children under 12 years

consult a dentist or physician

Inactive ingredients

Water, Glycerin, Hydrated Silica, Sorbitol, PEG-12, PVM/MA Copolymer, Sodium Lauryl Sulfate, Flavor, Trisodium Phosphate, Poloxamer 407, Sodium Hydroxide, Sodium Saccharin, Cellulose Gum, Xanthan Gum, Titanium Dioxide.

Questions? 1-800-468-6502



SAVE WATER

Turn off the tap while brushing

Dist. by: COLGATE-PALMOLIVE COMPANY
New York, NY 10022 USA
www.colgate.com

Colgate®

Sensitive

PREVENT & REPAIR

+ WHITENING

Where does sensitive tooth pain come from?

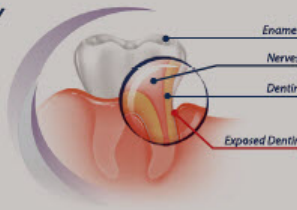
Receding gums and damage to your enamel can expose thousands of microscopic channels which lead to your tooth's nerve center. When your teeth make contact with something hot, cold, or sweet, sensations are carried down these channels directly to the nerves, causing pain.

The advanced dual action formula of Colgate® Sensitive Prevent & Repair

✓ **Helps prevent painful sensitivity** with a clinically proven formula

✓ **Helps repair weakened parts of sensitive teeth and strengthen enamel** with fluoride

GLUTEN FREE

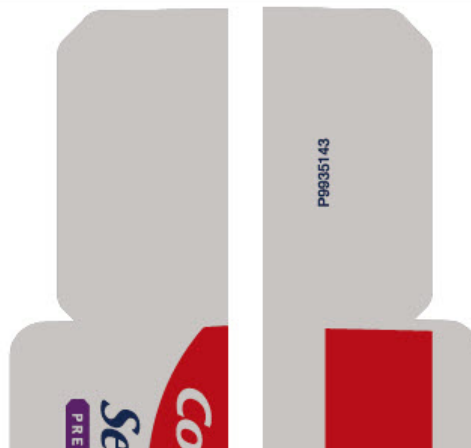


How does Colgate® Sensitive Prevent & Repair work?

Colgate® Sensitive Prevent & Repair is a clinically proven formula that works fast, within 2 weeks. It provides long-lasting sensitivity relief and builds a protective shield to help prevent painful sensitivity with regular use.

* Maximum strength FDA allowed antisensitivity active ingredient

smartlabel®
app enabled
scan for more information





COLGATE SENSITIVE PREVENT AND REPAIR

potassium nitrate and sodium fluoride paste, dentifrice

Product Information

Product Type	HUMAN OTC DRUG	Item Code (Source)	NDC:35000-128
Route of Administration	DENTAL		

Active Ingredient/Active Moiety

Ingredient Name	Basis of Strength	Strength
POTASSIUM NITRATE (UNII: RU45X2JN0Z) (NITRATE ION - UNII:T93E9Y2844)	POTASSIUM NITRATE	50 mg in 1 g
SODIUM FLUORIDE (UNII: 8ZYQ1474W7) (FLUORIDE ION - UNII:Q80VPU408O)	FLUORIDE ION	1.1 mg in 1 g

Inactive Ingredients

Ingredient Name	Strength
WATER (UNII: 059QF0K00R)	
GLYCERIN (UNII: PDC6A3C0OX)	
HYDRATED SILICA (UNII: Y6O7T4G8P9)	
SORBITOL (UNII: 506T60A25R)	
POLYETHYLENE GLYCOL 600 (UNII: NL4J9F21N9)	
SODIUM PHOSPHATE, TRIBASIC, DODECAHYDRATE (UNII: B70850QPHR)	
BUTYL ESTER OF METHYL VINYL ETHER/MALEIC ANHYDRIDE COPOLYMER (125000 MW) (UNII: 389H2R62BD)	

SODIUM LAURYL SULFATE (UNII: 368GB5141J)	
POLOXAMER 407 (UNII: TUF2IVW3M2)	
SODIUM HYDROXIDE (UNII: 55X04QC32I)	
SACCHARIN SODIUM (UNII: SB8ZUX40TY)	
CARBOXYMETHYLCELLULOSE SODIUM, UNSPECIFIED FORM (UNII: K679OBS311)	
XANTHAN GUM (UNII: TTV12P4NEE)	
TITANIUM DIOXIDE (UNII: 15FIX9V2JP)	

Product Characteristics

Color	WHITE	Score	
Shape		Size	
Flavor	MINT	Imprint Code	
Contains			

Packaging

#	Item Code	Package Description	Marketing Start Date	Marketing End Date
1	NDC:35000-128-60	1 in 1 CARTON	10/25/2019	
1		170 g in 1 TUBE; Type 0: Not a Combination Product		

Marketing Information

Marketing Category	Application Number or Monograph Citation	Marketing Start Date	Marketing End Date
OTC MONOGRAPH NOT FINAL	part356	10/25/2019	

Labeler - Colgate-Palmolive (001344381)

Establishment

Name	Address	ID/FEI	Business Operations
Colgate-Palmolive		785047999	MANUFACTURE(35000-128)

Revised: 12/2019

Colgate-Palmolive