

LISINOPRIL- lisinopril tablet
Wockhardt USA LLC.

HIGHLIGHTS OF PRESCRIBING INFORMATION

These highlights do not include all the information needed to use LISINOPRIL TABLETS safely and effectively. See full prescribing information for LISINOPRIL TABLETS.

LISINOPRIL tablets, for oral use

Initial U.S. Approval: 1988

WARNING: FETAL TOXICITY

See full prescribing information for complete boxed warning.

- **When pregnancy is detected, discontinue lisinopril as soon as possible. (5.1)**
- **Drugs that act directly on the renin-angiotensin system can cause injury and death to the developing fetus. (5.1)**

INDICATIONS AND USAGE

Lisinopril is an angiotensin converting enzyme (ACE) inhibitor indicated for:

- Treatment of hypertension in adults and pediatric patients 6 years of age and older (1.1)
- Adjunct therapy for heart failure (1.2)
- Treatment of Acute Myocardial Infarction (1.3)

DOSAGE AND ADMINISTRATION

- Hypertension: Initial adult dose is 10 mg once daily. Titrate up to 40 mg daily based on blood pressure response. Initiate patients on diuretics at 5 mg once daily (2.1)
- Pediatric patients with glomerular filtration rate $> 30 \text{ mL/min/1.73m}^2$: Initial dose in patients 6 years of age and older is 0.07 mg per kg (up to 5 mg total) once daily (2.1)
- Heart Failure: Initiate with 5 mg once daily. Increase dose as tolerated to 40 mg daily (2.2)
- Acute Myocardial Infarction (MI): Give 5 mg within 24 hours of MI. Followed by 5 mg after 24 hours, then 10 mg once daily. (2.3)
- Renal Impairment: For patients with creatinine clearance $\geq 10 \text{ mL/min}$ and $\leq 30 \text{ mL/min}$, halve usual initial dose. For patients with creatinine clearance $< 10 \text{ mL/min}$ or on hemodialysis, the recommended initial dose is 2.5 mg (2.4)

DOSAGE FORMS AND STRENGTHS

Tablets: 2.5 mg, 5 mg, 10 mg, 20 mg, 30 mg, 40 mg (3)

CONTRAINDICATIONS

- Angioedema or a history of hereditary or idiopathic angioedema (4)
- Hypersensitivity (4)
- Co-administration of aliskiren with lisinopril in patients with diabetes (4, 7.4)

WARNINGS AND PRECAUTIONS

- Angioedema: Discontinue lisinopril, provide appropriate therapy and monitor until resolved (5.2)
- Renal impairment: Monitor renal function periodically (5.3)
- Hypotension: Patients with other heart or renal diseases have increased risk, monitor blood pressure after initiation (5.4)
- Hyperkalemia: Monitor serum potassium periodically (5.5)
- Cholestatic jaundice and hepatic failure: Monitor for jaundice or signs of liver failure (5.6)

ADVERSE REACTIONS

Common adverse reactions (events 2% greater than placebo) by use:

- Hypertension: headache, dizziness and cough (6.1)
- Heart Failure: hypotension and chest pain (6.1)
- Acute Myocardial Infarction: hypotension (6.1)

To report SUSPECTED ADVERSE REACTIONS, contact Wockhardt USA LLC. at 1-800-346-6854 or FDA at 1-

800-FDA-1088 or www.fda.gov/medwatch.

----- **DRUG INTERACTIONS** -----

- Diuretics: Excessive drop in blood pressure (7.1)
- NSAIDs: Increased risk of renal impairment and loss of antihypertensive efficacy (7.3)
- Dual inhibition of the renin-angiotensin system: Increased risk of renal impairment, hypotension and hyperkalemia (7.4)
- Lithium: Symptoms of lithium toxicity (7.5)
- Gold: Nitritoid reactions have been reported (7.6)
- Concomitant mTOR inhibitor or neprilysin inhibitor use may increase angioedema risk (7.7, 7.8)

----- **USE IN SPECIFIC POPULATIONS** -----

- Lactation: Advise not to breastfeed. (8.2)
- Race: Less antihypertensive effect in blacks than non blacks (8.6)

See 17 for **PATIENT COUNSELING INFORMATION**.

Revised: 1/2018

FULL PRESCRIBING INFORMATION: CONTENTS*

1 INDICATIONS AND USAGE

- 1.1 Hypertension
- 1.2 Heart Failure
- 1.3 Reduction of Mortality in Acute Myocardial Infarction

2 DOSAGE AND ADMINISTRATION

- 2.1 Hypertension
- 2.2 Heart Failure
- 2.3 Reduction of Mortality in Acute Myocardial Infarction
- 2.4 Dose in Patients with Renal Impairment

3 DOSAGE FORMS AND STRENGTHS

4 CONTRAINDICATIONS

5 WARNINGS AND PRECAUTIONS

- 5.1 Fetal Toxicity
- 5.2 Angioedema and Anaphylactoid Reactions
- 5.3 Impaired Renal Function
- 5.4 Hypotension
- 5.5 Hyperkalemia
- 5.6 Hepatic Failure

6 ADVERSE REACTIONS

- 6.1 Clinical Trials Experience
- 6.2 Post-marketing Experience

7 DRUG INTERACTIONS

- 7.1 Diuretics
- 7.2 Antidiabetics
- 7.3 Non-Steroidal Anti-Inflammatory Agents Including Selective Cyclooxygenase-2 Inhibitors (COX-2 Inhibitors):
- 7.4 Dual Blockade of the Renin-Angiotensin System (RAS)
- 7.5 Lithium
- 7.6 Gold
- 7.7 mTOR Inhibitors
- 7.8 Neprilysin Inhibitor

8 USE IN SPECIFIC POPULATIONS

- 8.1 Pregnancy
- 8.2 Lactation

- 8.4 Pediatric Use
- 8.5 Geriatric Use
- 8.6 Race
- 8.7 Renal Impairment

10 OVERDOSAGE

11 DESCRIPTION

12 CLINICAL PHARMACOLOGY

- 12.1 Mechanism of Action
- 12.2 Pharmacodynamics
- 12.3 Pharmacokinetics

13 NONCLINICAL TOXICOLOGY

- 13.1 Carcinogenesis, Mutagenesis, Impairment of Fertility

14 CLINICAL STUDIES

- 14.1 Hypertension
- 14.2 Heart Failure
- 14.3 Acute Myocardial Infarction

16 HOW SUPPLIED/STORAGE AND HANDLING

17 PATIENT COUNSELING INFORMATION

* Sections or subsections omitted from the full prescribing information are not listed.

FULL PRESCRIBING INFORMATION

WARNING: FETAL TOXICITY

- **When pregnancy is detected, discontinue lisinopril as soon as possible [see Warnings and Precautions (5.1)].**
- **Drugs that act directly on the renin-angiotensin system can cause injury and death to the developing fetus [see Warnings and Precautions (5.1)].**

1 INDICATIONS AND USAGE

1.1 Hypertension

Lisinopril tablets are indicated for the treatment of hypertension in adult patients and pediatric patients 6 years of age and older to lower blood pressure. Lowering blood pressure lowers the risk of fatal and non-fatal cardiovascular events, primarily strokes and myocardial infarctions. These benefits have been seen in controlled trials of antihypertensive drugs from a wide variety of pharmacologic classes.

Control of high blood pressure should be part of comprehensive cardiovascular risk management, including, as appropriate, lipid control, diabetes management, antithrombotic therapy, smoking cessation, exercise, and limited sodium intake. Many patients will require more than 1 drug to achieve blood pressure goals. For specific advice on goals and management, see published guidelines, such as those of the National High Blood Pressure Education Program's Joint National Committee on Prevention, Detection, Evaluation, and Treatment of High Blood Pressure (JNC).

Numerous antihypertensive drugs, from a variety of pharmacologic classes and with different mechanisms of action, have been shown in randomized controlled trials to reduce cardiovascular morbidity and mortality, and it can be concluded that it is blood pressure reduction, and not some other pharmacologic property of the drugs, that is largely responsible for those benefits. The largest and most consistent cardiovascular outcome benefit has been a reduction in the risk of stroke, but reductions in myocardial infarction and cardiovascular mortality also have been seen regularly.

Elevated systolic or diastolic pressure causes increased cardiovascular risk, and the absolute risk increase per mmHg is greater at higher blood pressures, so that even modest reductions of severe hypertension can provide substantial benefit. Relative risk reduction from blood pressure reduction is similar across populations with varying absolute risk, so the absolute benefit is greater in patients who are at higher risk independent of their hypertension (for example, patients with diabetes or hyperlipidemia), and such patients would be expected to benefit from more aggressive treatment to a lower blood pressure goal.

Some antihypertensive drugs have smaller blood pressure effects (as monotherapy) in black patients, and many antihypertensive drugs have additional approved indications and effects (e.g., on angina, heart failure, or diabetic kidney disease). These considerations may guide selection of therapy.

Lisinopril tablets may be administered alone or with other antihypertensive agents [see *Clinical Studies (14.1)*].

1.2 Heart Failure

Lisinopril tablets are indicated to reduce signs and symptoms of systolic heart failure [see *Clinical Studies (14.2)*].

1.3 Reduction of Mortality in Acute Myocardial Infarction

Lisinopril tablets are indicated for the reduction of mortality in treatment of hemodynamically stable patients within 24 hours of acute myocardial infarction. Patients should receive, as appropriate, the standard recommended treatments such as thrombolytics, aspirin and beta-blockers [see *Clinical Studies (14.3)*].

2 DOSAGE AND ADMINISTRATION

2.1 Hypertension

Initial Therapy in adults: The recommended initial dose is 10 mg once a day. Dosage should be adjusted according to blood pressure response. The usual dosage range is 20 mg to 40 mg per day administered in a single daily dose. Doses up to 80 mg have been used but do not appear to give greater effect.

Use with diuretics in adults

If blood pressure is not controlled with lisinopril tablets alone, a low dose of a diuretic may be added (e.g., hydrochlorothiazide, 12.5 mg). After the addition of a diuretic, it may be possible to reduce the dose of lisinopril tablets.

The recommended starting dose in adult patients with hypertension taking diuretics is 5 mg once per day.

Pediatric Patients 6 years of age and older with hypertension

For pediatric patients with glomerular filtration rate > 30 mL/min/1.73 m², the recommended starting dose is 0.07 mg per kg once daily (up to 5 mg total). Dosage should be adjusted according to blood pressure response up to a maximum of 0.61 mg per kg (up to 40 mg) once daily. Doses above 0.61 mg per kg (or in excess of 40 mg) have not been studied in pediatric patients [see *Clinical Pharmacology (12.3)*].

Lisinopril tablets are not recommended in pediatric patients < 6 years or in pediatric patients with glomerular filtration rate < 30 mL/min/1.73 m² [see *Use in Specific Populations (8.4)* and *Clinical Studies (14.1)*].

2.2 Heart Failure

The recommended starting dose for lisinopril tablets, when used with diuretics and (usually) digitalis as adjunctive therapy for systolic heart failure, is 5 mg once daily. The recommended starting dose in

these patients with hyponatremia (serum sodium < 130 mEq/L) is 2.5 mg once daily. Increase as tolerated to a maximum of 40 mg once daily.

Diuretic dose may need to be adjusted to help minimize hypovolemia, which may contribute to hypotension [see *Warnings and Precautions (5.4)* and *Drug Interactions (7.1)*]. The appearance of hypotension after the initial dose of lisinopril tablets does not preclude subsequent careful dose titration with the drug, following effective management of the hypotension.

2.3 Reduction of Mortality in Acute Myocardial Infarction

In hemodynamically stable patients within 24 hours of the onset of symptoms of acute myocardial infarction, give lisinopril tablets 5 mg orally, followed by 5 mg after 24 hours, 10 mg after 48 hours and then 10 mg once daily. Dosing should continue for at least six weeks.

Initiate therapy with 2.5 mg in patients with a low systolic blood pressure (≤ 120 mmHg and > 100 mmHg) during the first 3 days after the infarct [see *Warnings and Precautions (5.4)*]. If hypotension occurs (systolic blood pressure ≤ 100 mmHg) a daily maintenance dose of 5 mg may be given with temporary reductions to 2.5 mg if needed. If prolonged hypotension occurs (systolic blood pressure < 90 mmHg for more than 1 hour) lisinopril tablets should be withdrawn.

2.4 Dose in Patients with Renal Impairment

No dose adjustment of lisinopril tablets are required in patients with creatinine clearance > 30 mL/min. In patients with creatinine clearance ≥ 10 mL/min and ≤ 30 mL/min, reduce the initial dose of lisinopril tablets to half of the usual recommended dose i.e., hypertension, 5 mg; systolic heart failure, 2.5 mg and acute MI, 2.5 mg. Up titrate as tolerated to a maximum of 40 mg daily. For patients on hemodialysis or creatinine clearance < 10 mL/min, the recommended initial dose is 2.5 mg once daily [see *Use in Specific Populations (8.7)* and *Clinical Pharmacology (12.3)*].

3 DOSAGE FORMS AND STRENGTHS

2.5 mg are white to off-white, round biconvex uncoated tablets debossed with "W" on one side and other side plain.

5 mg are white to off-white, round biconvex uncoated tablets debossed with

W

928 on one side and breakline on other side.

10 mg are white to off-white, round biconvex uncoated tablets debossed with

W

929 on one side and other side plain.

20 mg are mottled light yellow, round biconvex uncoated tablets debossed with

W

941 on one side and other side plain.

30 mg are mottled light red, round biconvex uncoated tablets debossed with

W

953 on one side and other side plain.

40 mg are mottled light brown, round biconvex uncoated tablets debossed with

W

942 on one side and other side plain.

4 CONTRAINDICATIONS

Lisinopril tablets are contraindicated in combination with a neprilysin inhibitor (e.g., sacubitril). Do not administer lisinopril tablets within 36 hours of switching to or from sacubitril/valsartan, a neprilysin inhibitor [*see Warnings and Precautions (5.2)*].

Lisinopril tablets are contraindicated in patients with:

- a history of angioedema or hypersensitivity related to previous treatment with an angiotensin converting enzyme inhibitor
- hereditary or idiopathic angioedema.

Do not co-administer aliskiren with lisinopril tablets in patients with diabetes [*see Drug Interactions (7.4)*].

5 WARNINGS AND PRECAUTIONS

5.1 Fetal Toxicity

Lisinopril can cause fetal harm when administered to a pregnant woman. Use of drugs that act on the renin-angiotensin system during the second and third trimesters of pregnancy reduces fetal renal function and increases fetal and neonatal morbidity and death. Resulting oligohydramnios can be associated with fetal lung hypoplasia and skeletal deformations. Potential neonatal adverse effects include skull hypoplasia, anuria, hypotension, renal failure, and death. When pregnancy is detected, discontinue lisinopril as soon as possible [*see Use in specific Populations (8.1)*].

5.2 Angioedema and Anaphylactoid Reactions

Patients taking concomitant mTOR inhibitor (e.g. temsirolimus, sirolimus, everolimus) therapy or a neprilysin inhibitor may be at increased risk for angioedema [*see Drug Interactions (7.7, 7.8)*] .

Angioedema

Head and Neck Angioedema

Angioedema of the face, extremities, lips, tongue, glottis and/or larynx, including some fatal reactions, have occurred in patients treated with angiotensin converting enzyme inhibitors, including lisinopril, at any time during treatment. Patients with involvement of the tongue, glottis or larynx are likely to experience airway obstruction, especially those with a history of airway surgery. Lisinopril should be promptly discontinued and appropriate therapy and monitoring should be provided until complete and sustained resolution of signs and symptoms of angioedema has occurred.

Patients with a history of angioedema unrelated to ACE inhibitor therapy may be at increased risk of angioedema while receiving an ACE inhibitor [*see Contraindications (4)*]. ACE inhibitors have been associated with a higher rate of angioedema in Black than in non-Black patients.

Intestinal Angioedema

Intestinal angioedema has occurred in patients treated with ACE inhibitors. These patients presented with abdominal pain (with or without nausea or vomiting); in some cases there was no prior history of facial angioedema and C-1 esterase levels were normal. In some cases, the angioedema was diagnosed by procedures including abdominal CT scan or ultrasound, or at surgery, and symptoms resolved after stopping the ACE inhibitor.

Anaphylactoid Reactions

Anaphylactoid Reactions During Desensitization

Two patients undergoing desensitizing treatment with hymenoptera venom while receiving ACE inhibitors sustained life-threatening anaphylactoid reactions.

Anaphylactoid Reactions During Dialysis

Sudden and potentially life threatening anaphylactoid reactions have occurred in some patients dialyzed with high-flux membranes and treated concomitantly with an ACE inhibitor. In such patients, dialysis must be stopped immediately, and aggressive therapy for anaphylactoid reactions must be initiated. Symptoms have not been relieved by antihistamines in these situations. In these patients, consideration should be given to using a different type of dialysis membrane or a different class of antihypertensive agent. Anaphylactoid reactions have also been reported in patients undergoing low-density lipoprotein apheresis with dextran sulfate absorption.

5.3 Impaired Renal Function

Monitor renal function periodically in patients treated with lisinopril. Changes in renal function including acute renal failure can be caused by drugs that inhibit the renin-angiotensin system. Patients whose renal function may depend in part on the activity of the renin-angiotensin system (e.g., patients with renal artery stenosis, chronic kidney disease, severe congestive heart failure, post-myocardial infarction or volume depletion) may be at particular risk of developing acute renal failure on lisinopril. Consider withholding or discontinuing therapy in patients who develop a clinically significant decrease in renal function on lisinopril [see *Adverse Reactions (6.1)*, *Drug Interactions (7.4)*].

5.4 Hypotension

Lisinopril can cause symptomatic hypotension, sometimes complicated by oliguria, progressive azotemia, acute renal failure or death. Patients at risk of excessive hypotension include those with the following conditions or characteristics: heart failure with systolic blood pressure below 100 mmHg, ischemic heart disease, cerebrovascular disease, hyponatremia, high dose diuretic therapy, renal dialysis, or severe volume and/or salt depletion of any etiology.

In these patients, lisinopril should be started under very close medical supervision and such patients should be followed closely for the first two weeks of treatment and whenever the dose of lisinopril and/or diuretic is increased. Avoid use of Lisinopril Tablets in patients who are hemodynamically unstable after acute MI.

Symptomatic hypotension is also possible in patients with severe aortic stenosis or hypertrophic cardiomyopathy.

Surgery/Anesthesia

In patients undergoing major surgery or during anesthesia with agents that produce hypotension, lisinopril may block angiotensin II formation secondary to compensatory renin release. If hypotension occurs and is considered to be due to this mechanism, it can be corrected by volume expansion.

5.5 Hyperkalemia

Serum potassium should be monitored periodically in patients receiving lisinopril. Drugs that inhibit the renin-angiotensin system can cause hyperkalemia. Risk factors for the development of hyperkalemia include renal insufficiency, diabetes mellitus, and the concomitant use of potassium-sparing diuretics, potassium supplements and/or potassium-containing salt substitutes [see *Drug Interactions (7.1)*].

5.6 Hepatic Failure

ACE inhibitors have been associated with a syndrome that starts with cholestatic jaundice or hepatitis and progresses to fulminant hepatic necrosis and sometimes death. The mechanism of this syndrome is not understood. Patients receiving ACE inhibitors who develop jaundice or marked elevations of hepatic enzymes should discontinue the ACE inhibitor and receive appropriate medical treatment.

6 ADVERSE REACTIONS

6.1 Clinical Trials Experience

Because clinical trials are conducted under widely varying conditions, adverse reaction rates observed in the clinical studies of a drug cannot be directly compared to rates in the clinical studies of another drug and may not reflect the rates observed in practice.

Hypertension

In clinical trials in patients with hypertension treated with lisinopril tablets, 5.7% of patients on lisinopril tablets discontinued with adverse reactions.

The following adverse reactions (events 2% greater on lisinopril tablets than on placebo) were observed with lisinopril tablets alone: headache (by 3.8%), dizziness (by 3.5%), cough (by 2.5%).

Heart Failure

In patients with systolic heart failure treated with lisinopril tablets for up to four years, 11% discontinued therapy with adverse reactions. In controlled studies in patients with heart failure, therapy was discontinued in 8.1% of patients treated with lisinopril tablets for 12 weeks, compared to 7.7% of patients treated with placebo for 12 weeks.

The following adverse reactions (events 2% greater on lisinopril tablets than on placebo) were observed with lisinopril tablets: hypotension (by 3.8%), chest pain (by 2.1%).

In the two-dose ATLAS trial [see *Clinical Studies (14.2)*] in heart failure patients, withdrawals due to adverse reactions were not different between the low and high groups, either in total number of discontinuation (17 to 18%) or in rare specific reactions (< 1%). The following adverse reactions, mostly related to ACE inhibition, were reported more commonly in the high dose group:

Table 1 Dose-related Adverse Drug Reactions: ATLAS trial

	High Dose (n=1568)	Low Dose (n=1596)
Dizziness	19%	12%
Hypotension	11%	7%
Creatinine increased	10%	7%
Hyperkalemia	6%	4%
Syncope	7%	5%

Acute Myocardial Infarction

Patients treated with lisinopril tablets had a higher incidence of hypotension (by 5.3%) and renal dysfunction (by 1.3%) compared with patients not taking lisinopril tablets.

Other clinical adverse reactions occurring in 1 % or higher of patients with hypertension or heart failure treated with lisinopril tablets in controlled clinical trials and do not appear in other sections of labeling are listed below:

Body as a whole: Fatigue, asthenia, orthostatic effects.

Digestive: Pancreatitis, constipation, flatulence, dry mouth, diarrhea

Hematologic: Rare cases of bone marrow depression, hemolytic anemia, leukopenia/neutropenia and thrombocytopenia.

Endocrine: Diabetes mellitus, inappropriate antidiuretic hormone secretion.

Metabolic: Gout

Skin: Urticaria, alopecia, photosensitivity, erythema, flushing, diaphoresis, cutaneous pseudolymphoma, toxic epidermal necrolysis, Stevens - Johnson syndrome, and pruritus.

Special Senses: Visual loss, diplopia, blurred vision, tinnitus, photophobia, taste disturbances, olfactory disturbance.

Urogenital: Impotence

Miscellaneous: A symptom complex has been reported which may include a positive ANA, an elevated erythrocyte sedimentation rate, arthralgia/arthritis, myalgia, fever, vasculitis, eosinophilia, leukocytosis, paresthesia and vertigo. Rash, photosensitivity or other dermatological manifestations may occur alone or in combination with these symptoms.

Clinical Laboratory Test Findings

Serum Potassium: In clinical trials hyperkalemia (serum potassium greater than 5.7 mEq/L) occurred in 2.2% and 4.8% of lisinopril tablets-treated patients with hypertension and heart failure, respectively [*see Warnings and Precautions (5.5)*].

Creatinine, Blood Urea Nitrogen: Minor increases in blood urea nitrogen and serum creatinine, reversible upon discontinuation of therapy, were observed in about 2% of patients with hypertension treated with lisinopril tablets alone. Increases were more common in patients receiving concomitant diuretics and in patients with renal artery stenosis [*see Warnings and Precautions (5.4)*]. Reversible minor increases in blood urea nitrogen and serum creatinine were observed in 11.6% of patients with heart failure on concomitant diuretic therapy. Frequently, these abnormalities resolved when the dosage of the diuretic was decreased.

Patients with acute myocardial infarction in the GISSI-3 trial treated with lisinopril tablets had a higher (2.4% versus 1.1% in placebo) incidence of renal dysfunction in-hospital and at six weeks (increasing creatinine concentration to over 3 mg/dL or a doubling or more of the baseline serum creatinine concentration).

Hemoglobin and Hematocrit: Small decreases in hemoglobin and hematocrit (mean decreases of approximately 0.4 g% and 1.3 vol%, respectively) occurred frequently in patients treated with lisinopril tablets but were rarely of clinical importance in patients without some other cause of anemia. In clinical trials, less than 0.1% of patients discontinued therapy due to anemia.

6.2 Post-marketing Experience

The following adverse reactions have been identified during post-approval use of lisinopril tablets that are not included in other sections of labeling. Because these reactions are reported voluntarily from a population of uncertain size, it is not always possible to reliably estimate their frequency or establish a causal relationship to drug exposure.

Other reactions include:

Metabolism and nutrition disorders

Hyponatremia [*see Warnings and Precautions (5.4)*], cases of hypoglycemia in diabetic patients on oral antidiabetic agents or insulin [*see Drug Interactions (7.2)*]

Nervous system and psychiatric disorders

Mood alterations (including depressive symptoms), mental confusion, hallucinations

Skin and subcutaneous tissue disorders

Psoriasis

7 DRUG INTERACTIONS

7.1 Diuretics

Initiation of lisinopril tablets in patients on diuretics may result in excessive reduction of blood

pressure. The possibility of hypotensive effects with lisinopril tablets can be minimized by either decreasing or discontinuing the diuretic or increasing the salt intake prior to initiation of treatment with lisinopril tablets. If this is not possible, reduce the starting dose of lisinopril tablets [see *Dosage and Administration (2.2)* and *Warnings and Precautions (5.4)*].

Lisinopril tablet attenuates potassium loss caused by thiazide-type diuretics. Potassium-sparing diuretics (spironolactone, amiloride, triamterene, and others) can increase the risk of hyperkalemia. Therefore, if concomitant use of such agents is indicated, monitor the patient's serum potassium frequently.

7.2 Antidiabetics

Concomitant administration of lisinopril tablets and antidiabetic medicines (insulins, oral hypoglycemic agents) may cause an increased blood-glucose-lowering effect with risk of hypoglycemia.

7.3 Non-Steroidal Anti-Inflammatory Agents Including Selective Cyclooxygenase-2 Inhibitors (COX-2 Inhibitors):

In patients who are elderly, volume-depleted (including those on diuretic therapy), or with compromised renal function, coadministration of NSAIDs, including selective COX-2 inhibitors, with ACE inhibitors, including lisinopril, may result in deterioration of renal function, including possible acute renal failure. These effects are usually reversible. Monitor renal function periodically in patients receiving lisinopril and NSAID therapy.

The antihypertensive effect of ACE inhibitors, including lisinopril, may be attenuated by NSAIDs.

7.4 Dual Blockade of the Renin-Angiotensin System (RAS)

Dual blockade of the RAS with angiotensin receptor blockers, ACE inhibitors, or aliskiren is associated with increased risks of hypotension, hyperkalemia, and changes in renal function (including acute renal failure) compared to monotherapy.

The VA NEPHRON trial enrolled 1448 patients with type 2 diabetes, elevated urinary-albumin-to-creatinine ratio, and decreased estimated glomerular filtration rate (GFR 30 to 89.9 ml/min), randomized them to lisinopril or placebo on a background of losartan therapy and followed them for a median of 2.2 years. Patients receiving the combination of losartan and lisinopril did not obtain any additional benefit compared to monotherapy for the combined endpoint of decline in GFR, end state renal disease, or death, but experienced an increased incidence of hyperkalemia and acute kidney injury compared with the monotherapy group.

In general, avoid combined use of RAS inhibitors. Closely monitor blood pressure, renal function and electrolytes in patients on lisinopril tablets and other agents that affect the RAS.

Do not co-administer aliskiren with lisinopril tablets in patients with diabetes. Avoid use of aliskiren with lisinopril tablets in patients with renal impairment (GFR <60 ml/min).

7.5 Lithium

Lithium toxicity has been reported in patients receiving lithium concomitantly with drugs, which cause elimination of sodium, including ACE inhibitors. Lithium toxicity was usually reversible upon discontinuation of lithium and the ACE inhibitor. Monitor serum lithium levels during concurrent use.

7.6 Gold

Nitritoid reactions (symptoms include facial flushing, nausea, vomiting and hypotension) have been reported rarely in patients on therapy with injectable gold (sodium aurothiomalate) and concomitant ACE inhibitor therapy including lisinopril.

7.7 mTOR Inhibitors

Patients taking concomitant mTOR inhibitor (e.g. temsirolimus, sirolimus, everolimus) therapy may be at increased risk for angioedema [see *Warnings and Precautions (5.2)*].

7.8 Nephilysin Inhibitor

Patients taking concomitant nephilysin inhibitors may be at increased risk for angioedema. [see *Warnings and Precautions (5.2)*]

8 USE IN SPECIFIC POPULATIONS

8.1 Pregnancy

Risk Summary

Lisinopril can cause fetal harm when administered to a pregnant woman. Use of drugs that act on the renin-angiotensin system during the second and third trimesters of pregnancy reduces fetal renal function and increases fetal and neonatal morbidity and death. Most epidemiologic studies examining fetal abnormalities after exposure to antihypertensive use in the first trimester have not distinguished drugs affecting the renin-angiotensin system from other antihypertensive agents. When pregnancy is detected, discontinue lisinopril as soon as possible.

The estimated background risk of major birth defects and miscarriage for the indicated population(s) are unknown. In the general U.S. population, the estimated background risk of major birth defects and miscarriage in clinically recognized pregnancies is 2% to 4% and 15% to 20%, respectively.

Clinical Considerations

Disease-associated maternal and/or embryo/fetal risk

Hypertension in pregnancy increases the maternal risk for pre-eclampsia, gestational diabetes, premature delivery, and delivery complications (e.g., need for cesarean section, and post-partum hemorrhage). Hypertension increases the fetal risk for intrauterine growth restriction and intrauterine death. Pregnant women with hypertension should be carefully monitored and managed accordingly.

Fetal/Neonatal Adverse Reactions

Oligohydramnios in pregnant women who use drugs affecting the renin-angiotensin system in the second and third trimesters of pregnancy can result in the following: reduced fetal renal function leading to anuria and renal failure, fetal lung hypoplasia and skeletal deformations, including skull hypoplasia, hypotension, and death. In the unusual case that there is no appropriate alternative to therapy with drugs affecting the renin-angiotensin system for a particular patient, apprise the mother of the potential risk to the fetus.

Perform serial ultrasound examinations to assess the intra-amniotic environment. Fetal testing may be appropriate, based on the week of pregnancy. Patients and physicians should be aware, however, that oligohydramnios may not appear until after the fetus has sustained irreversible injury. Closely observe infants with histories of in utero exposure to lisinopril for hypotension, oliguria, and hyperkalemia. If oliguria or hypotension occur in neonates with a history of *in utero* exposure to lisinopril, support blood pressure and renal perfusion. Exchange transfusions or dialysis may be required as a means of reversing hypotension and substituting for disordered renal function.

8.2 Lactation

Risk Summary

No data are available regarding the presence of lisinopril in human milk or the effects of lisinopril on the breast fed infant or on milk production. Lisinopril is present in rat milk. Because of the potential for severe adverse reactions in the breastfed infant, advise women not to breastfeed during treatment with lisinopril tablets.

8.4 Pediatric Use

Antihypertensive effects and safety of lisinopril tablets have been established in pediatric patients aged 6 to 16 years [see *Dosage and Administration (2.1)* and *Clinical Studies (14.1)*]. No relevant differences between the adverse reaction profile for pediatric patients and adult patients were identified.

Safety and effectiveness of lisinopril tablets have not been established in pediatric patients under the age 6 or in pediatric patients with glomerular filtration rate < 30 mL/min/1.73 m² [see *Dosage and Administration (2.1)*, *Clinical Pharmacology (12.3)*, and *Clinical Studies (14.1)*].

Neonates with a history of *in utero* exposure to lisinopril tablets

If oliguria or hypotension occurs, direct attention toward support of blood pressure and renal perfusion. Exchange transfusions or dialysis may be required as a means of reversing hypotension and/or substituting for disordered renal function.

8.5 Geriatric Use

No dosage adjustment with lisinopril tablets is necessary in elderly patients. In a clinical study of lisinopril tablets in patients with myocardial infarctions (GISSI-3 Trial) 4,413 (47%) were 65 and over, while 1,656 (18%) were 75 and over. In this study, 4.8 % of patients aged 75 years and older discontinued lisinopril tablets treatment because of renal dysfunction vs. 1.3% of patients younger than 75 years. No other differences in safety or effectiveness were observed between elderly and younger patients, but greater sensitivity of some older individuals cannot be ruled out.

8.6 Race

ACE inhibitors, including lisinopril, have an effect on blood pressure that is less in black patients than in non blacks.

8.7 Renal Impairment

Dose adjustment of lisinopril tablets are required in patients undergoing hemodialysis or whose creatinine clearance is ≤ 30 mL/min. No dose adjustment of lisinopril tablets are required in patients with creatinine clearance > 30 mL/min [see *Dosage and Administration (2.4)* and *Clinical Pharmacology (12.3)*].

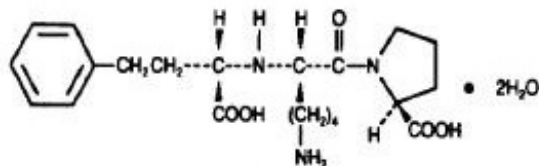
10 OVERDOSAGE

Following a single oral dose of 20 g/kg no lethality occurred in rats, and death occurred in one of 20 mice receiving the same dose. The most likely manifestation of overdosage would be hypotension, for which the usual treatment would be intravenous infusion of normal saline solution.

Lisinopril can be removed by hemodialysis [see *Clinical Pharmacology (12.3)*].

11 DESCRIPTION

Lisinopril is an oral long-acting angiotensin converting enzyme (ACE) inhibitor. Lisinopril, a synthetic peptide derivative, is chemically described as (S)-1-[N²-(1-carboxy-3-phenylpropyl)-L-lysyl]-L-proline dihydrate. Its empirical formula is C₂₁H₃₁N₃O₅·2H₂O and its structural formula is:



Lisinopril is a white to off-white, crystalline powder, with a molecular weight of 441.53. It is soluble in water and sparingly soluble in methanol and practically insoluble in ethanol.

Lisinopril tablet, USP is supplied as 2.5 mg, 5 mg, 10 mg, 20 mg, 30 mg and 40 mg tablets for oral administration.

Inactive Ingredients:

2.5 mg, 5 mg, 10 mg tablets - dibasic calcium phosphate dihydrate, povidone, pregelatinized maize starch, mannitol, colloidal silicon dioxide, corn starch, magnesium stearate.

20 mg, 30 mg, 40 mg tablets - dibasic calcium phosphate dihydrate, povidone, pregelatinized maize starch, mannitol, colloidal silicon dioxide, corn starch, magnesium stearate, ferric oxide yellow (for 20 mg), ferric oxide red (for 30 mg) and ferric oxide brown (for 40 mg).

12 CLINICAL PHARMACOLOGY

12.1 Mechanism of Action

Lisinopril inhibits angiotensin-converting enzyme (ACE) in human subjects and animals. ACE is a peptidyl dipeptidase that catalyzes the conversion of angiotensin I to the vasoconstrictor substance, angiotensin II. Angiotensin II also stimulates aldosterone secretion by the adrenal cortex. The beneficial effects of lisinopril in hypertension and heart failure appear to result primarily from suppression of the renin-angiotensin-aldosterone system. Inhibition of ACE results in decreased plasma angiotensin II which leads to decreased vasopressor activity and to decreased aldosterone secretion. The latter decrease may result in a small increase of serum potassium. In hypertensive patients with normal renal function treated with lisinopril tablets alone for up to 24 weeks, the mean increase in serum potassium was approximately 0.1 mEq/L; however, approximately 15% of patients had increases greater than 0.5 mEq/L and approximately 6% had a decrease greater than 0.5 mEq/L. In the same study, patients treated with lisinopril tablets and hydrochlorothiazide for up to 24 weeks had a mean decrease in serum potassium of 0.1 mEq/L; approximately 4% of patients had increases greater than 0.5 mEq/L and approximately 12% had a decrease greater than 0.5 mEq/L [see *Clinical Studies (14.1)*]. Removal of angiotensin II negative feedback on renin secretion leads to increased plasma renin activity.

ACE is identical to kininase, an enzyme that degrades bradykinin. Whether increased levels of bradykinin, a potent vasodepressor peptide, play a role in the therapeutic effects of lisinopril tablets remains to be elucidated.

While the mechanism through which lisinopril tablets lowers blood pressure is believed to be primarily suppression of the renin-angiotensin-aldosterone system, lisinopril tablet is antihypertensive even in patients with low-renin hypertension. Although lisinopril tablet was antihypertensive in all races studied, Black hypertensive patients (usually a low-renin hypertensive population) had a smaller average response to monotherapy than non-Black patients.

Concomitant administration of lisinopril tablets and hydrochlorothiazide further reduced blood pressure in Black and non-Black patients and any racial differences in blood pressure response were no longer evident.

12.2 Pharmacodynamics

Hypertension

Adult Patients: Administration of lisinopril tablets to patients with hypertension results in a reduction of both supine and standing blood pressure to about the same extent with no compensatory tachycardia. Symptomatic postural hypotension is usually not observed although it can occur and should be anticipated in volume and/or salt-depleted patients [see *Warnings and Precautions (5.4)*]. When given together with thiazide-type diuretics, the blood pressure lowering effects of the two drugs are approximately additive.

In most patients studied, onset of antihypertensive activity was seen at one hour after oral administration of an individual dose of lisinopril tablets, with peak reduction of blood pressure achieved by 6 hours. Although an antihypertensive effect was observed 24 hours after dosing with recommended single daily doses, the effect was more consistent and the mean effect was considerably larger in some studies with doses of 20 mg or more than with lower doses; however, at all doses studied, the mean antihypertensive effect was substantially smaller 24 hours after dosing than it was 6 hours after dosing.

The antihypertensive effects of lisinopril tablets are maintained during long-term therapy. Abrupt withdrawal of lisinopril tablets has not been associated with a rapid increase in blood pressure, or a significant increase in blood pressure compared to pretreatment levels.

Non-Steroidal Anti-Inflammatory Agents

In a study in 36 patients with mild to moderate hypertension where the antihypertensive effects of lisinopril tablets alone were compared to lisinopril tablets given concomitantly with indomethacin, the use of indomethacin was associated with a reduced effect, although the difference between the two regimens was not significant.

12.3 Pharmacokinetics

Adult Patients: Following oral administration of lisinopril tablets, peak serum concentrations of lisinopril occur within about 7 hours, although there was a trend to a small delay in time taken to reach peak serum concentrations in acute myocardial infarction patients. Food does not alter the bioavailability of lisinopril tablets. Declining serum concentrations exhibit a prolonged terminal phase, which does not contribute to drug accumulation. This terminal phase probably represents saturable binding to ACE and is not proportional to dose. Upon multiple dosing, lisinopril exhibits an effective half-life of 12 hours.

Lisinopril does not appear to be bound to other serum proteins. Lisinopril does not undergo metabolism and is excreted unchanged entirely in the urine. Based on urinary recovery, the mean extent of absorption of lisinopril is approximately 25%, with large intersubject variability (6% to 60%) at all doses tested (5 mg to 80 mg). The absolute bioavailability of lisinopril is reduced to 16% in patients with stable NYHA Class II-IV congestive heart failure, and the volume of distribution appears to be slightly smaller than that in normal subjects. The oral bioavailability of lisinopril in patients with acute myocardial infarction is similar to that in healthy volunteers.

Impaired renal function decreases elimination of lisinopril, which is excreted principally through the kidneys, but this decrease becomes clinically important only when the glomerular filtration rate is below 30 mL/min. Above this glomerular filtration rate, the elimination half-life is little changed. With greater impairment, however, peak and trough lisinopril levels increase, time to peak concentration increases and time to attain steady state is prolonged [see *Dosage and Administration (2.4)*]. Lisinopril can be removed by hemodialysis.

Pediatric Patients: The pharmacokinetics of lisinopril were studied in 29 pediatric hypertensive patients between 6 years and 16 years with glomerular filtration rate $> 30 \text{ mL/min/1.73 m}^2$. After doses of 0.1 mg per kg to 0.2 mg per kg, steady state peak plasma concentrations of lisinopril occurred within 6 hours and the extent of absorption based on urinary recovery was about 28%. These values are similar to those obtained previously in adults. The typical value of lisinopril oral clearance (systemic clearance/absolute bioavailability) in a child weighing 30 kg is 10 L/h, which increases in proportion to renal function. In a multicenter, open-label pharmacokinetic study of daily oral lisinopril in 22 pediatric hypertensive patients with stable kidney transplant (ages 7 to 17 years; estimated glomerular filtration rate $> 30 \text{ mL/min/1.73 m}^2$), dose normalized exposures were in the range reported previously in children without a kidney transplant.

13 NONCLINICAL TOXICOLOGY

13.1 Carcinogenesis, Mutagenesis, Impairment of Fertility

There was no evidence of a tumorigenic effect when lisinopril was administered for 105 weeks to male and female rats at doses up to 90 mg per kg per day (about 56 or 9 times* the maximum recommended daily human dose, based on body weight and body surface area, respectively). There was no evidence of carcinogenicity when lisinopril was administered for 92 weeks to (male and female) mice at doses up to 135 mg per kg per day (about 84 times* the maximum recommended daily human dose). This dose was 6.8 times the maximum human dose based on body surface area in mice.

Lisinopril was not mutagenic in the Ames microbial mutagen test with or without metabolic activation. It was also negative in a forward mutation assay using Chinese hamster lung cells. Lisinopril did not produce single strand DNA breaks in an *in vitro* alkaline elution rat hepatocyte assay. In addition, lisinopril did not produce increases in chromosomal aberrations in an *in vitro* test in Chinese hamster ovary cells or in an *in vivo* study in mouse bone marrow.

There were no adverse effects on reproductive performance in male and female rats treated with up to 300 mg per kg per day of lisinopril. This dose is 188 times and 30 times the maximum human dose when based on mg/kg and mg/m², respectively.

Studies in rats indicate that lisinopril crosses the blood brain barrier poorly. Multiple doses of lisinopril in rats do not result in accumulation in any tissues. Milk of lactating rats contains radioactivity following administration of ¹⁴C lisinopril. By whole body autoradiography, radioactivity was found in the placenta following administration of labeled drug to pregnant rats, but none was found in the fetuses.

*Calculations assume a human weight of 50 kg and human body surface area of 1.62m²

14 CLINICAL STUDIES

14.1 Hypertension

Two dose-response studies utilizing a once-daily regimen were conducted in 438 mild to moderate hypertensive patients not on a diuretic. Blood pressure was measured 24 hours after dosing. An antihypertensive effect of lisinopril was seen with 5 mg of lisinopril in some patients. However, in both studies blood pressure reduction occurred sooner and was greater in patients treated with 10 mg, 20 mg or 80 mg of lisinopril than patients treated with 5 mg of lisinopril.

In controlled clinical studies of patients with mild to moderate hypertension, patients were treated with lisinopril 20 mg to 80 mg daily, hydrochlorothiazide 12.5 mg to 50 mg daily or atenolol 50 mg to 200 mg daily; and in other studies of patients with moderate to severe hypertension, patients were treated with lisinopril 20 mg to 80 mg daily or metoprolol 100 mg to 200 mg daily. Lisinopril demonstrated superior reductions of systolic and diastolic compared to hydrochlorothiazide in a population that was 75% Caucasian. Lisinopril was approximately equivalent to atenolol and metoprolol in reducing diastolic blood pressure, and had somewhat greater effects on systolic blood pressure.

Lisinopril had similar blood pressure reductions and adverse effects in younger and older (> 65 years) patients. It was less effective in reducing blood pressure in Blacks than in Caucasians.

In hemodynamic studies of lisinopril in patients with essential hypertension, blood pressure reduction was accompanied by a reduction in peripheral arterial resistance with little or no change in cardiac output and in heart rate. In a study in nine hypertensive patients, following administration of lisinopril, there was an increase in mean renal blood flow that was not significant. Data from several small studies are inconsistent with respect to the effect of lisinopril on glomerular filtration rate in hypertensive patients with normal renal function, but suggest that changes, if any, are not large.

In patients with renovascular hypertension lisinopril has been shown to be well tolerated and effective in reducing blood pressure [see *Warnings and Precautions (5.3)*].

Pediatric Patients: In a clinical study involving 115 hypertensive pediatric patients 6 to 16 years of age, patients who weighed < 50 kg received either 0.625 mg, 2.5 mg or 20 mg of lisinopril once daily and patients who weighed ≥ 50 kg received either 1.25 mg, 5 mg, or 40 mg of lisinopril once daily. At the

end of 2 weeks, lisinopril lowered trough blood pressure in a dose-dependent manner with antihypertensive efficacy demonstrated at doses > 1.25 mg (0.02 mg per kg). This effect was confirmed in a randomized withdrawal phase, where the diastolic pressure rose by about 9 mmHg more in patients randomized to placebo than compared to patients who remained on the middle and high doses of lisinopril. The dose-dependent antihypertensive effect of lisinopril was consistent across several demographic subgroups: age, Tanner stage, gender, and race. In this study, lisinopril was generally well-tolerated.

In the above pediatric studies, lisinopril was given either as tablets or in a suspension for those children and infants who were unable to swallow tablets or who required a lower dose than is available in tablet form [see *Dosage and Administration (2.1)*].

14.2 Heart Failure

In two placebo controlled, 12-week clinical studies compared the addition of lisinopril up to 20 mg daily to digitalis and diuretics alone. The combination of lisinopril, digitalis and diuretics reduced the following signs and symptoms of heart failure: edema, rales, paroxysmal nocturnal dyspnea and jugular venous distention. In one of the studies, the combination of lisinopril, digitalis and diuretics reduced orthopnea, presence of third heart sound and the number of patients classified as NYHA Class III and IV; and improved exercise tolerance. A large (over 3000 patients) survival study, the ATLAS Trial, comparing 2.5 mg and 35 mg of lisinopril in patients with systolic heart failure, showed that the higher dose of lisinopril had outcomes at least as favorable as the lower dose.

During baseline-controlled clinical trials, in patients with systolic heart failure receiving digitalis and diuretics, single doses of lisinopril resulted in decreases in pulmonary capillary wedge pressure, systemic vascular resistance and blood pressure accompanied by an increase in cardiac output and no change in heart rate.

14.3 Acute Myocardial Infarction

The Gruppo Italiano per lo Studio della Sopravvivenza nell'Infarto Miocardico (GISSI-3) study was a multicenter, controlled, randomized, unblinded clinical trial conducted in 19,394 patients with acute myocardial infarction (MI) admitted to a coronary care unit. It was designed to examine the effects of short-term (6 week) treatment with lisinopril, nitrates, their combination, or no therapy on short-term (6 week) mortality and on long-term death and markedly impaired cardiac function. Hemodynamically-stable patients presenting within 24 hours of the onset of symptoms were randomized, in a 2 x 2 factorial design, to six weeks of either 1) lisinopril alone (n=4841), 2) nitrates alone (n=4869), 3) lisinopril plus nitrates (n=4841), or 4) open control (n=4843). All patients received routine therapies, including thrombolytics (72%), aspirin (84%), and a beta blocker (31%), as appropriate, normally utilized in acute myocardial infarction (MI) patients.

The protocol excluded patients with hypotension (systolic blood pressure \leq 100 mmHg), severe heart failure, cardiogenic shock, and renal dysfunction (serum creatinine > 2 mg per dL and/or proteinuria > 500 mg per 24 h). Patients randomized to lisinopril received 5 mg within 24 hours of the onset of symptoms, 5 mg after 24 hours, and then 10 mg daily thereafter. Patients with systolic blood pressure less than 120 mmHg at baseline received 2.5 mg of lisinopril. If hypotension occurred, the lisinopril dose was reduced or if severe hypotension occurred lisinopril was stopped [see *Dosage and Administration (2.3)*].

The primary outcomes of the trial were the overall mortality at 6 weeks and a combined end point at 6 months after the myocardial infarction, consisting of the number of patients who died, had late (day 4) clinical congestive heart failure, or had extensive left ventricular damage defined as ejection fraction \leq 35% or an akinetic-dyskinetic [A-D] score \geq 45%. Patients receiving lisinopril (n=9646), alone or with nitrates, had an 11% lower risk of death (p=0.04) compared to patients who did not receive lisinopril (n=9672) (6.4% vs. 7.2%, respectively) at six weeks. Although patients randomized to receive lisinopril for up to six weeks also fared numerically better on the combined end point at 6 months, the open nature

of the assessment of heart failure, substantial loss to follow-up echocardiography, and substantial excess use of lisinopril between 6 weeks and 6 months in the group randomized to 6 weeks of lisinopril, preclude any conclusion about this end point.

Patients with acute myocardial infarction, treated with lisinopril, had a higher (9.0% versus 3.7%) incidence of persistent hypotension (systolic blood pressure < 90 mmHg for more than 1 hour) and renal dysfunction (2.4% versus 1.1%) in-hospital and at six weeks (increasing creatinine concentration to over 3 mg per dL or a doubling or more of the baseline serum creatinine concentration) [see *Adverse Reactions (6.1)*].

16 HOW SUPPLIED/STORAGE AND HANDLING

Lisinopril Tablets, USP 2.5 mg - White to off-white, round biconvex uncoated tablets debossed with "W" on one side and other side plain.

(NDC 64679-927-01) Bottles of 100 tablets

(NDC 64679-927-02) Bottles of 1000 tablets

(NDC 64679-927-03) Unit Dose Blister Package of 100

(NDC 64679-927-05) Bottles of 500 tablets

Lisinopril Tablets, USP 5 mg - White to off-white, round biconvex uncoated tablets debossed with W on one side and breakline on other side.

928

(NDC 64679-928-01) Bottles of 100 tablets

(NDC 64679-928-02) Bottles of 3000 tablets

(NDC 64679-928-03) Unit Dose Blister Package of 100

(NDC 64679-928-05) Bottles of 500 tablets

(NDC 64679-928-06) Bottles of 1000 tablets

Lisinopril Tablets, USP 10 mg - White to off-white, round biconvex uncoated tablets debossed with W on one side and other side plain.

929

(NDC 64679-929-01) Bottles of 100 tablets

(NDC 64679-929-02) Bottles of 3000 tablets

(NDC 64679-929-03) Unit Dose Blister Package of 100

(NDC 64679-929-05) Bottles of 500 tablets

(NDC 64679-929-06) Bottles of 1000 tablets

Lisinopril Tablets, USP 20 mg - Mottled light yellow, round biconvex uncoated tablets debossed with W on one side and other side plain

941

(NDC 64679-941-01) Bottles of 100 tablets

(NDC 64679-941-02) Bottles of 3000 tablets

(NDC 64679-941-03) Unit Dose Blister Package of 100

(NDC 64679-941-05) Bottles of 500 tablets

(NDC 64679-941-06) Bottles of 1000 tablets

Lisinopril Tablets, USP 30 mg - Mottled light red, round biconvex uncoated tablets debossed with W on one side and other side plain

953

(NDC 64679-953-01) Bottles of 100 tablets

(NDC 64679-953-02) Bottles of 1000 tablets

(NDC 64679-953-03) Unit Dose Blister Package of 100

(NDC 64679-953-05) Bottles of 500 tablets

Lisinopril Tablets, USP 40 mg - Mottled light brown, round biconvex uncoated tablets debossed with W on one side and other side plain.

942

(NDC 64679-942-01) Bottles of 100 tablets

(NDC 64679-942-02) Bottles of 1000 tablets

(NDC 64679-942-03) Unit Dose Blister Package of 100

(NDC 64679-942-05) Bottles of 500 tablets

Storage

Store at controlled room temperature, 20°-25°C (68°-77°F) [See USP]. Protect from moisture, freezing and excessive heat. Dispense in a tight container.

17 PATIENT COUNSELING INFORMATION

NOTE: This information is intended to aid in the safe and effective use of this medication. It is not a disclosure of all possible adverse or intended effects.

Pregnancy: Advise pregnant women and females of reproductive potential of the potential risk to a fetus. Advise females of reproductive potential to notify their healthcare provider with a known or suspected pregnancy [*see Warnings and Precautions (5.1) and Use in Specific Populations (8.1)*].

Angioedema: Angioedema, including laryngeal edema may occur at any time during treatment with angiotensin converting enzyme inhibitors, including lisinopril tablets. Tell patients to report immediately any signs or symptoms suggesting angioedema (swelling of face, extremities, eyes, lips, tongue, difficulty in swallowing or breathing) and to take no more drug until they have consulted with the prescribing physician.

Lactation: Advise women not to breastfeed during treatment with lisinopril tablets [*see Use in Specific Populations (8.2)*].

Symptomatic Hypotension: Tell patients to report light-headedness especially during the first few days of therapy. If actual syncope occurs, tell the patient to discontinue the drug until they have consulted with the prescribing physician.

Tell patients that excessive perspiration and dehydration may lead to an excessive fall in blood pressure because of reduction in fluid volume. Other causes of volume depletion such as vomiting or diarrhea may also lead to a fall in blood pressure; advise patients accordingly.

Hyperkalemia: Tell patients not to use salt substitutes containing potassium without consulting their physician.

Hypoglycemia: Tell diabetic patients treated with oral antidiabetic agents or insulin starting an ACE inhibitor to monitor for hypoglycaemia closely, especially during the first month of combined use [*see Drug Interactions (7.2)*].

Leukopenia/Neutropenia: Tell patients to report promptly any indication of infection (e.g., sore throat, fever), which may be a sign of leukopenia/neutropenia.

Rx Only

Manufactured by:

Wockhardt Limited

H-14/2, M.I.D.C. Area, Waluj,

Aurangabad, Maharashtra,

India.

Distributed by:

Wockhardt USA LLC.

20 Waterview Blvd.

Parsippany, NJ 07054

USA.

Iss.110118

PACKAGE LABEL.PRINCIPAL DISPLAY PANEL

DRUG: Lisinopril

GENERIC: Lisinopril

DOSAGE: Tablets

ADMINSTRATION: Oral

NDC: 64679-927-01

STRENGTH: 2.5 mg

COLOR: White


SHAPE: Round biconvex

SCORE: No Score

SIZE: 5 mm

IMPRINT: W;927

QTY: 100 Tablets

<p>USUAL DOSAGE: See accompanying Professional Information Brochure.</p> <p>WARNING: As with all medications, keep out of the reach of children.</p> <p>Store at controlled room temperature, 20°-25°C (66°-77°F) [See USP].</p> <p>Protect from moisture, freezing and excessive heat. Dispense in a tight container.</p> <p>Rev.110118</p>	<p>NDC 64679-927-01</p> <p>Lisinopril Tablets, USP</p> <p>2.5 mg</p> <p>100 Tablets ONCE-DAILY</p> <p>Rx only</p> <p>WOCKHARDT LIFE WINS</p>	<p>Manufactured by: Wockhardt Limited, H-14/2, M.I.D.C. Area, Waluj, Aurangabad, Maharashtra, India.</p> <p>Distributed by: Wockhardt USA LLC., 20 Waterview Blvd. Parsippany, NJ 07054 USA.</p>	<p>(01)0036467927014</p> 	<p>NO VANDISH AREA</p> <p>Size: 15 mm x 21 mm</p> <p>LOT: EXP:</p>
--	--	--	--	---

DRUG: Lisinopril
GENERIC: Lisinopril
DOSAGE: Tablets
ADMINSTRATION: Oral
NDC: 64679-928-05
STRENGTH: 5 mg
COLOR: White
SHAPE: Round biconvex
SCORE: No Score
SIZE: 7 mm
IMPRINT: W;928
QTY: 500 Tablets

USUAL DOSAGE: See accompanying Professional Information Brochure.

WARNING: As with all medications, keep out of the reach of children.

Store at controlled room temperature, 20°-25°C (68°-77°F) [See USP].

Protect from moisture, freezing and excessive heat. Dispense in a tight container.

Rev.110118

NDC 64679-928-05

**Lisinopril
Tablets, USP**

5 mg

500 Tablets
ONCE-DAILY Rx only

WOCKHARDT LIFE WINS

Manufactured by:
Wockhardt Limited
H-14/2, M.I.D.C. Area, Waluj,
Aurangabad, Maharashtra,
India.

Distributed by:
Wockhardt USA LLC,
20 Waterview Blvd,
Parsippany, NJ 07054 USA.

3
6467992805
6

NON VARNISH AREA
Size: 15 mm x 34 mm

LOT:
EXP:

DRUG: Lisinopril
GENERIC: Lisinopril
DOSAGE: Tablets
ADMINSTRATION: Oral
NDC: 64679-929-06
STRENGTH: 10 mg
COLOR: White
SHAPE: Round biconvex
SCORE: No Score
SIZE: 8 mm
IMPRINT: W;929
QTY: 1000 Tablets

USUAL DOSAGE: See accompanying Professional Information Brochure.

WARNING: As with all medications, keep out of the reach of children.

Store at controlled room temperature, 20°-25°C (68°-77°F) [See USP].

Protect from moisture, freezing and excessive heat. Dispense in a tight container.

Rev.110118

NDC 64679-929-06

**Lisinopril
Tablets, USP**

10 mg

1000 Tablets
ONCE-DAILY

Rx only

WOCKHARDT | LIFE WINS

Manufactured by:
Wockhardt Limited
H-14/2, M.I.D.C. Area, Waluj,
Aurangabad, Maharashtra, India.

Distributed by:
Wockhardt USA LLC,
20 Waterview Blvd.
Parsippany, NJ 07054 USA.

9 0 6 7 9 2 9 0 6



~~NON VARNISH AREA~~

Size: 17 mm x 43 mm

LOT:
EXP:

DRUG: Lisinopril

GENERIC: Lisinopril

DOSAGE: Tablets

ADMINSTRATION: Oral

NDC: 64679-941-01

STRENGTH: 20 mg

COLOR: Yellow (Mottled light yellow)

SHAPE: Round biconvex

SCORE: No Score

SIZE: 8 mm

IMPRINT: W;941

QTY: 100 Tablets

USUAL DOSAGE: See accompanying Professional Information Brochure.

WARNING: As with all medications, keep out of the reach of children.

Store at controlled room temperature, 20°-25°C (68°-77°F) [See USP].

Protect from moisture, freezing and excessive heat. Dispense in a tight container.

Rev.110118

NDC 64679-941-01

**Lisinopril
Tablets, USP**

20 mg

100 Tablets
ONCE-DAILY

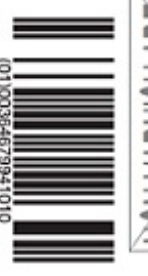
Rx only

WOCKHARDT | LIFE WINS

Manufactured by:
Wockhardt Limited, H-14/2, M.I.D.C. Area,
Waluj, Aurangabad, Maharashtra, India.

Distributed by:
Wockhardt USA LLC, 20 Waterview Blvd.
Parsippany, NJ 07054 USA.

01019662995300101



~~NON VARNISH AREA~~

Size: 15 mm x 21 mm

LOT:
EXP:

DRUG: Lisinopril

GENERIC: Lisinopril

DOSAGE: Tablets

ADMINSTRATION: Oral

NDC: 64679-953-05

STRENGTH: 30 mg

COLOR: Red (Mottled light red)

SHAPE: Round biconvex

SCORE: No Score

SIZE: 8 mm

IMPRINT: W;953

QTY: 500 Tablets

USUAL DOSAGE: See accompanying Professional Information Brochure.

WARNING: As with all medications, keep out of the reach of children.

Store at controlled room temperature, 20°-25°C (68°-77°F) [See USP].

Protect from moisture, freezing and excessive heat. Dispense in a tight container.

Rev.110118

NDC 64679-953-05

**Lisinopril
Tablets, USP**

30 mg

500 Tablets
ONCE-DAILY

Rx only

WOCKHARDT LIFE WINS

Manufactured by:
Wockhardt Limited
H-14/2, M.I.D.C. Area, Waluj,
Aurangabad, Maharashtra, India.

Distributed by:
Wockhardt USA LLC,
20 Waterlily Blvd.,
Parsippany, NJ 07054 USA.

3
6467995305
1

~~NON VARNISH AREA~~
Size: 15 mm x 38 mm

LOT:
EXP.:

DRUG: Lisinopril

GENERIC: Lisinopril

DOSAGE: Tablets

ADMINISTRATION: Oral

NDC: 64679-942-01

STRENGTH: 40 mg

COLOR: Brown (Mottled light brown)

SHAPE: Round biconvex

SCORE: No Score

SIZE: 8 mm

IMPRINT: W;942

QTY: 100 Tablets

USUAL DOSAGE: See accompanying Professional Information Brochure.

WARNING: As with all medications, keep out of the reach of children.

Store at controlled room temperature, 20°-25°C (68°-77°F) [See USP].

Protect from moisture, freezing and excessive heat. Dispense in a tight container.

Rev.110118

NDC 64679-942-01

Lisinopril Tablets, USP

40 mg

100 Tablets
ONCE-DAILY

Rx only



Manufactured by:
Wockhardt Limited, H-14/2, M.I.D.C. Area,
Wājū, Aurangābād, Maharashtra, India.

Distributed by:
Wockhardt USA LLC., 20 Waterview Blvd.,
Parsippany, NJ 07054 USA.



LOT:
EXP:

LISINOPRIL

lisinopril tablet

Product Information

Product Type	HUMAN PRESCRIPTION DRUG	Item Code (Source)	NDC:64679-927
Route of Administration	ORAL		

Active Ingredient/Active Moiety

Ingredient Name	Basis of Strength	Strength
LISINOPRIL (UNII: E7199S1YWR) (LISINOPRIL ANHYDROUS - UNII:7Q3P4BS2FD)	LISINOPRIL	2.5 mg

Inactive Ingredients

Ingredient Name	Strength
CALCIUM PHOSPHATE, DIBASIC, DIHYDRATE (UNII: O7TSZ97GEP)	
MAGNESIUM STEARATE (UNII: 70097M6I30)	
MANNITOL (UNII: 3OWL53L36A)	
POVIDONE (UNII: FZ989GH94E)	
SILICON DIOXIDE (UNII: ETJ7Z6XBU4)	
STARCH, CORN (UNII: O8232NY3SJ)	

Product Characteristics

Color	white (white to off-white)	Score	no score
Shape	ROUND	Size	5mm
Flavor		Imprint Code	W
Contains			

Packaging

#	Item Code	Package Description	Marketing Start Date	Marketing End Date
1	NDC:64679-927-01	100 in 1 BOTTLE; Type 0: Not a Combination Product	04/19/2007	
2	NDC:64679-927-02	1000 in 1 BOTTLE; Type 0: Not a Combination Product	04/19/2007	
3	NDC:64679-927-05	500 in 1 BOTTLE; Type 0: Not a Combination Product	04/19/2007	

4	NDC:64679-927-03	10 in 1 CARTON	04/19/2007	
4		10 in 1 BLISTER PACK; Type 0: Not a Combination Product		

Marketing Information			
Marketing Category	Application Number or Monograph Citation	Marketing Start Date	Marketing End Date
ANDA	ANDA078402	04/19/2007	

LISINOPRIL

lisinopril tablet

Product Information			
Product Type	HUMAN PRESCRIPTION DRUG	Item Code (Source)	NDC:64679-928
Route of Administration	ORAL		

Active Ingredient/Active Moiety		
Ingredient Name	Basis of Strength	Strength
LISINOPRIL (UNII: E7199S1YWR) (LISINOPRIL ANHYDROUS - UNII:7Q3P4BS2FD)	LISINOPRIL	5 mg

Inactive Ingredients	
Ingredient Name	Strength
CALCIUM PHOSPHATE, DIBASIC, DIHYDRATE (UNII: O7TSZ97GEP)	
MAGNESIUM STEARATE (UNII: 70097M6I30)	
MANNITOL (UNII: 3OWL53L36A)	
POVIDONE (UNII: FZ989GH94E)	
SILICON DIOXIDE (UNII: ETJ7Z6XBU4)	
STARCH, CORN (UNII: O8232NY3SJ)	

Product Characteristics			
Color	white (white to off-white)	Score	no score
Shape	ROUND	Size	7mm
Flavor		Imprint Code	W;928
Contains			

Packaging				
#	Item Code	Package Description	Marketing Start Date	Marketing End Date
1	NDC:64679-928-01	100 in 1 BOTTLE; Type 0: Not a Combination Product	04/19/2007	
2	NDC:64679-928-05	500 in 1 BOTTLE; Type 0: Not a Combination Product	04/19/2007	
3	NDC:64679-928-06	1000 in 1 BOTTLE; Type 0: Not a Combination Product	04/19/2007	
4	NDC:64679-928-02	3000 in 1 BOTTLE; Type 0: Not a Combination Product	04/19/2007	

5	NDC:64679-928-03	10 in 1 CARTON	04/19/2007	
5		10 in 1 BLISTER PACK; Type 0: Not a Combination Product		

Marketing Information

Marketing Category	Application Number or Monograph Citation	Marketing Start Date	Marketing End Date
ANDA	ANDA078402	04/19/2007	

LISINOPRIL

lisinopril tablet

Product Information

Product Type	HUMAN PRESCRIPTION DRUG	Item Code (Source)	NDC:64679-929
Route of Administration	ORAL		

Active Ingredient/Active Moiety

Ingredient Name	Basis of Strength	Strength
LISINOPRIL (UNII: E7199S1YWR) (LISINOPRIL ANHYDROUS - UNII:7Q3P4BS2FD)	LISINOPRIL	10 mg

Inactive Ingredients

Ingredient Name	Strength
CALCIUM PHOSPHATE, DIBASIC, DIHYDRATE (UNII: O7TSZ97GEP)	
MAGNESIUM STEARATE (UNII: 70097M6I30)	
MANNITOL (UNII: 3OWL53L36A)	
POVIDONE (UNII: FZ989GH94E)	
SILICON DIOXIDE (UNII: ETJ7Z6XBU4)	
STARCH, CORN (UNII: O8232NY3SJ)	

Product Characteristics

Color	white (white to off-white)	Score	no score
Shape	ROUND	Size	8mm
Flavor		Imprint Code	W;929
Contains			

Packaging

#	Item Code	Package Description	Marketing Start Date	Marketing End Date
1	NDC:64679-929-01	100 in 1 BOTTLE; Type 0: Not a Combination Product	04/19/2007	
2	NDC:64679-929-05	500 in 1 BOTTLE; Type 0: Not a Combination Product	04/19/2007	
3	NDC:64679-929-06	1000 in 1 BOTTLE; Type 0: Not a Combination Product	04/19/2007	
4	NDC:64679-929-02	3000 in 1 BOTTLE; Type 0: Not a Combination Product	04/19/2007	

5	NDC:64679-929-03	10 in 1 CARTON	04/19/2007	
5		10 in 1 BLISTER PACK; Type 0: Not a Combination Product		

Marketing Information

Marketing Category	Application Number or Monograph Citation	Marketing Start Date	Marketing End Date
ANDA	ANDA078402	04/19/2007	

LISINOPRIL

lisinopril tablet

Product Information

Product Type	HUMAN PRESCRIPTION DRUG	Item Code (Source)	NDC:64679-941
Route of Administration	ORAL		

Active Ingredient/Active Moiety

Ingredient Name	Basis of Strength	Strength
LISINOPRIL (UNII: E7199S1YWR) (LISINOPRIL ANHYDROUS - UNII:7Q3P4BS2FD)	LISINOPRIL	20 mg

Inactive Ingredients

Ingredient Name	Strength
CALCIUM PHOSPHATE, DIBASIC, DIHYDRATE (UNII: O7TSZ97GEP)	
FERRIC OXIDE YELLOW (UNII: EX438O2MRT)	
MAGNESIUM STEARATE (UNII: 70097M6I30)	
MANNITOL (UNII: 3OWL53L36A)	
POVIDONE (UNII: FZ989GH94E)	
SILICON DIOXIDE (UNII: ETJ7Z6XBU4)	
STARCH, CORN (UNII: O8232NY3SJ)	

Product Characteristics

Color	yellow (mottled light yellow)	Score	no score
Shape	ROUND	Size	8mm
Flavor		Imprint Code	W;941
Contains			

Packaging

#	Item Code	Package Description	Marketing Start Date	Marketing End Date
1	NDC:64679-941-01	100 in 1 BOTTLE; Type 0: Not a Combination Product	04/19/2007	
2	NDC:64679-941-05	500 in 1 BOTTLE; Type 0: Not a Combination Product	04/19/2007	
3	NDC:64679-941-06	1000 in 1 BOTTLE; Type 0: Not a Combination Product	04/19/2007	

4	NDC:64679-941-02	3000 in 1 BOTTLE; Type 0: Not a Combination Product	04/19/2007	
5	NDC:64679-941-03	10 in 1 CARTON	04/19/2007	
5		10 in 1 BLISTER PACK; Type 0: Not a Combination Product		

Marketing Information

Marketing Category	Application Number or Monograph Citation	Marketing Start Date	Marketing End Date
ANDA	ANDA078402	04/19/2007	

LISINOPRIL

lisinopril tablet

Product Information

Product Type	HUMAN PRESCRIPTION DRUG	Item Code (Source)	NDC:64679-953
Route of Administration	ORAL		

Active Ingredient/Active Moiety

Ingredient Name	Basis of Strength	Strength
LISINOPRIL (UNII: E7199S1YWR) (LISINOPRIL ANHYDROUS - UNII:7Q3P4BS2FD)	LISINOPRIL	30 mg

Inactive Ingredients

Ingredient Name	Strength
CALCIUM PHOSPHATE, DIBASIC, DIHYDRATE (UNII: O7TSZ97GEP)	
FERRIC OXIDE RED (UNII: 1K09F3G675)	
MAGNESIUM STEARATE (UNII: 70097M6I30)	
MANNITOL (UNII: 3OWL53L36A)	
POVIDONE (UNII: FZ989GH94E)	
SILICON DIOXIDE (UNII: ETJ7Z6XBU4)	
STARCH, CORN (UNII: O8232NY3SJ)	

Product Characteristics

Color	red (mottled light red)	Score	no score
Shape	ROUND	Size	8mm
Flavor		Imprint Code	W;953
Contains			

Packaging

#	Item Code	Package Description	Marketing Start Date	Marketing End Date
1	NDC:64679-953-01	100 in 1 BOTTLE; Type 0: Not a Combination Product	04/19/2007	
2	NDC:64679-953-05	500 in 1 BOTTLE; Type 0: Not a Combination Product	04/19/2007	
3	NDC:64679-953-	1000 in 1 BOTTLE; Type 0: Not a Combination Product	04/19/2007	

3	02	1000 in 1 BOTTLE; Type 0: Not a Combination Product	04/19/2007	
4	NDC:64679-953-03	10 in 1 CARTON	04/19/2007	
4		10 in 1 BLISTER PACK; Type 0: Not a Combination Product		

Marketing Information

Marketing Category	Application Number or Monograph Citation	Marketing Start Date	Marketing End Date
ANDA	ANDA078402	04/19/2007	

LISINOPRIL

lisinopril tablet

Product Information

Product Type	HUMAN PRESCRIPTION DRUG	Item Code (Source)	NDC:64679-942
Route of Administration	ORAL		

Active Ingredient/Active Moiety

Ingredient Name	Basis of Strength	Strength
LISINOPRIL (UNII: E7199S1YWR) (LISINOPRIL ANHYDROUS - UNII:7Q3P4BS2FD)	LISINOPRIL	40 mg

Inactive Ingredients

Ingredient Name	Strength
BROWN IRON OXIDE (UNII: 1N032N7MFO)	
CALCIUM PHOSPHATE, DIBASIC, DIHYDRATE (UNII: O7TSZ97GEP)	
MAGNESIUM STEARATE (UNII: 70097M6I30)	
MANNITOL (UNII: 3OWL53L36A)	
POVIDONE (UNII: FZ989GH94E)	
SILICON DIOXIDE (UNII: ETJ7Z6XBU4)	
STARCH, CORN (UNII: O8232NY3SJ)	

Product Characteristics

Color	brown (mottled light brown)	Score	no score
Shape	ROUND	Size	8mm
Flavor		Imprint Code	W;942
Contains			

Packaging

#	Item Code	Package Description	Marketing Start Date	Marketing End Date
1	NDC:64679-942-01	100 in 1 BOTTLE; Type 0: Not a Combination Product	04/19/2007	
2	NDC:64679-942-05	500 in 1 BOTTLE; Type 0: Not a Combination Product	04/19/2007	
	NDC:64679-942			

3	NDC:64679-942-02	1000 in 1 BOTTLE; Type 0: Not a Combination Product	04/19/2007	
4	NDC:64679-942-03	10 in 1 CARTON	04/19/2007	
4		10 in 1 BLISTER PACK; Type 0: Not a Combination Product		

Marketing Information

Marketing Category	Application Number or Monograph Citation	Marketing Start Date	Marketing End Date
ANDA	ANDA078402	04/19/2007	

Labeler - Wockhardt USA LLC. (170508365)

Registrant - Atlantide Pharmaceuticals AG (480475252)

Establishment

Name	Address	ID/FEI	Business Operations
Wockhardt Limited		676257570	analysis(64679-927, 64679-928, 64679-929, 64679-941, 64679-953, 64679-942) , manufacture(64679-927, 64679-928, 64679-929, 64679-941, 64679-953, 64679-942) , label(64679-927, 64679-928, 64679-929, 64679-941, 64679-953, 64679-942) , pack(64679-927, 64679-928, 64679-929, 64679-941, 64679-953, 64679-942)

Revised: 12/2020

Wockhardt USA LLC.