

SAPROPTERIN DIHYDROCHLORIDE- sapropterin dihydrochloride tablet ENDO USA, Inc.

HIGHLIGHTS OF PRESCRIBING INFORMATION

These highlights do not include all the information needed to use SAPROPTERIN DIHYDROCHLORIDE TABLETS safely and effectively. See full prescribing information for SAPROPTERIN DIHYDROCHLORIDE TABLETS.

SAPROPTERIN DIHYDROCHLORIDE tablets, for oral use
Initial U.S. Approval: 2007

INDICATIONS AND USAGE

Sapropterin dihydrochloride tablets are a phenylalanine hydroxylase activator indicated to reduce blood phenylalanine (Phe) levels in adult and pediatric patients one month of age and older with hyperphenylalaninemia (HPA) due to tetrahydrobiopterin-(BH₄-) responsive Phenylketonuria (PKU). Sapropterin dihydrochloride tablets are to be used in conjunction with a Phe-restricted diet. (1) (1)

DOSAGE AND ADMINISTRATION

All patients with PKU who are being treated with sapropterin dihydrochloride tablets should also be treated with a Phe-restricted diet including dietary protein and Phe restriction. (2.1) (2)

Starting Dosage (2)

- *Pediatric patients 1 month to 6 years:* The recommended starting dose of sapropterin dihydrochloride tablets is 10 mg/kg taken once daily. (2.1)
- *Patients 7 years and older:* The recommended starting dose of sapropterin dihydrochloride tablets is 10 to 20 mg/kg taken once daily. (2.1)

Dosage Adjustment (2)

- Doses of sapropterin dihydrochloride tablets may be adjusted in the range of 5 to 20 mg/kg taken once daily. (2.1)
- Monitor blood Phe regularly, especially in pediatric patients. (2.1, 5.3)

Preparation and Administration (2)

- Take with a meal. (2.2)
- Swallow tablets whole or after mixing in a small amount of soft foods or dissolving in recommended liquid. Swallow oral solution after mixing powder in a small amount of soft foods or dissolving in recommended liquids. See full prescribing information for complete information on mixing with food or liquid. (2.2)

DOSAGE FORMS AND STRENGTHS

- Tablets: 100 mg sapropterin dihydrochloride. (3)

CONTRAINDICATIONS

None. (4)

WARNINGS AND PRECAUTIONS

- Hypersensitivity reactions including anaphylaxis: Sapropterin dihydrochloride tablets are not recommended in patients with a history of anaphylaxis to sapropterin dihydrochloride tablets; discontinue treatment in patients who experience anaphylaxis and initiate appropriate medical treatment. Continue dietary Phe restrictions. (5.1)
- Upper Gastrointestinal Mucosal Inflammation: Monitor patients for signs and symptoms of these conditions including esophagitis and gastritis. (5.2)
- Hypophenylalaninemia: Pediatric patients younger than 7 years treated with Sapropterin dihydrochloride tablets doses of 20 mg/kg per day are at increased risk for low levels of blood Phe compared with patients 7 years and older. (5.3)
- Monitoring Blood Phe Levels During Treatment: Ensure adequate blood Phe control and nutritional balance during treatment with sapropterin dihydrochloride tablets. Frequent blood monitoring is recommended, especially in pediatric patients. (5.4, 2.1)
- Lack of Biochemical Response to Sapropterin Dihydrochloride Treatment: Response to sapropterin dihydrochloride treatment cannot be pre-determined by laboratory (e.g., molecular) testing and can only be determined by a therapeutic trial of sapropterin dihydrochloride. (5.5, 2.1)
- Interaction with Levodopa: Seizures, over-stimulation or irritability may occur; monitor patients for a change in neurologic status. (5.6, 7)
- Hyperactivity: Monitor patients for hyperactivity. (5.7)

ADVERSE REACTIONS

Most common adverse reactions (≥4%) are: headache, rhinorrhea, pharyngolaryngeal pain, diarrhea,

vomiting, cough, and nasal congestion. (6.1) (6)

To report SUSPECTED ADVERSE REACTIONS, contact Endo at 1-800-828-9393, or FDA at 1-800-FDA-1088 or www.fda.gov/medwatch. (6)

-----**DRUG INTERACTIONS**-----

- Inhibitors of Folate Synthesis (e.g., methotrexate, valproic acid, phenobarbital, trimethoprim): Can decrease endogenous BH4 levels; monitor blood Phe levels more frequently and adjust Sapropterin dihydrochloride tablets dosage as needed. (7)
- Drugs Affecting Nitric Oxide-Mediated Vasorelaxation (e.g., PDE-5 inhibitors): Potential for vasorelaxation; monitor blood pressure. (7)

See 17 for PATIENT COUNSELING INFORMATION.

Revised: 3/2020

FULL PRESCRIBING INFORMATION: CONTENTS*

1. INDICATIONS AND USAGE

2. DOSAGE AND ADMINISTRATION

- 2.1. Dosage
- 2.2. Preparation and Administration Instructions

3. DOSAGE FORMS AND STRENGTHS

4. CONTRAINDICATIONS

5. WARNINGS AND PRECAUTIONS

- 5.1. Hypersensitivity Reactions Including Anaphylaxis
- 5.2. Upper Gastrointestinal Mucosal Inflammation
- 5.3. Hypophenylalaninemia
- 5.4. Monitoring Blood Phe Levels During Treatment
- 5.5. Lack of Biochemical Response to Sapropterin dihydrochloride
- 5.6. Interaction with Levodopa
- 5.7. Hyperactivity

6. ADVERSE REACTIONS

- 6.1. Clinical Trials Experience
- 6.2. Postmarketing Experience

7. DRUG INTERACTIONS

8. USE IN SPECIFIC POPULATIONS

- 8.1. Pregnancy
- 8.3. Lactation
- 8.4. Pediatric Use
- 8.5. Geriatric Use

10. OVERDOSAGE

11. DESCRIPTION

12. CLINICAL PHARMACOLOGY

- 12.1. Mechanism of Action
- 12.2. Pharmacodynamics
- 12.3. Pharmacokinetics

13. NONCLINICAL TOXICOLOGY

- 13.1. Carcinogenesis, Mutagenesis, Impairment of Fertility

14. CLINICAL STUDIES

16. HOW SUPPLIED/STORAGE AND HANDLING

17. PATIENT COUNSELING INFORMATION

* Sections or subsections omitted from the full prescribing information are not listed.

FULL PRESCRIBING INFORMATION

1. INDICATIONS AND USAGE

Sapropterin dihydrochloride tablets are indicated to reduce blood phenylalanine (Phe) levels in adult and pediatric patients one month of age and older with hyperphenylalaninemia (HPA) due to tetrahydrobiopterin- (BH₄-) responsive Phenylketonuria (PKU). Sapropterin dihydrochloride tablets are to be used in conjunction with a Phe-restricted diet.

2. DOSAGE AND ADMINISTRATION

2.1. Dosage

Treatment with sapropterin dihydrochloride tablets should be directed by physicians knowledgeable in the management of PKU.

All patients with PKU who are being treated with sapropterin dihydrochloride tablets should also be treated with a Phe restricted diet, including dietary protein and Phe restriction.

Starting Dosage

Pediatric Patients 1 month to 6 years: The recommended starting dose of sapropterin dihydrochloride tablets is 10 mg/kg taken once daily.

Patients 7 years and older: The recommended starting dose of sapropterin dihydrochloride tablets is 10 to 20 mg/kg taken once daily.

Dosage Adjustment (Evaluation Period)

Existing dietary protein and Phe intake should not be modified during the evaluation period.

If a 10 mg/kg per day starting dose is used, then response to therapy is determined by change in blood Phe following treatment with sapropterin dihydrochloride tablets at 10 mg/kg per day for a period of up to 1 month. Blood Phe levels should be checked after 1 week of sapropterin dihydrochloride treatment and periodically for up to a month. If blood Phe does not decrease from baseline at 10 mg/kg per day, the dose may be increased to 20 mg/kg per day. Patients whose blood Phe does not decrease after 1 month of treatment at 20 mg/kg per day do not show a biochemical response and treatment with sapropterin dihydrochloride tablets should be discontinued in these patients.

If a 20 mg/kg per day starting dose is used, then response to therapy is determined by change in blood Phe following treatment with sapropterin dihydrochloride tablets at 20 mg/kg per day for a period of 1 month. Blood Phe levels should be checked after 1 week of sapropterin dihydrochloride treatment and periodically during the first month. Treatment should be discontinued in patients who do not show a biochemical response (blood Phe does not decrease) after 1 month of treatment at 20 mg/kg per day [see *Warnings and Precautions (5.4)*].

Once responsiveness to sapropterin dihydrochloride tablets has been established, the dosage may be adjusted within the range of 5 to 20 mg/kg per day according to biochemical response to therapy (blood Phe). Periodic blood Phe monitoring is recommended to assess blood Phe control, especially in pediatric patients [see *Warnings*

and Precautions (5.3)].

2.2. Preparation and Administration Instructions

Take Sapropterin dihydrochloride tablets orally with a meal, preferably at the same time each day [see *Clinical Pharmacology (12.3)*]. A missed dose should be taken as soon as possible, but two doses should not be taken on the same day.

Sapropterin Dihydrochloride Tablets

Sapropterin dihydrochloride tablets may be swallowed either as whole tablets or dissolved in 120 to 240 mL of water or apple juice and taken orally within 15 minutes of dissolution. It may take a few minutes for the tablets to dissolve. To make the tablets dissolve faster, tablets may be stirred or crushed. The tablets may not dissolve completely. Patients may see small pieces floating on top of the water or apple juice. This is normal and safe for patients to swallow. If after drinking the medicine patients still see pieces of the tablet in the container, more water or apple juice can be added to make sure all of the medicine is consumed. Sapropterin dihydrochloride tablets may also be crushed and then mixed in a small amount of soft foods such as apple sauce or pudding.

3. DOSAGE FORMS AND STRENGTHS

Sapropterin dihydrochloride tablets are for oral use. Each tablet contains 100 mg of sapropterin dihydrochloride (equivalent to 76.8 mg of sapropterin base). Tablets are off-white to light yellow, mottled, uncoated, round shaped tablets debossed with 'P' on one side and '720' on other side.

4. CONTRAINDICATIONS

None.

5. WARNINGS AND PRECAUTIONS

5.1. Hypersensitivity Reactions Including Anaphylaxis

Sapropterin dihydrochloride is not recommended in patients with a history of anaphylaxis to sapropterin dihydrochloride. Hypersensitivity reactions, including anaphylaxis and rash, have occurred [see *Adverse Reactions (6.2)*]. Signs of anaphylaxis include wheezing, dyspnea, coughing, hypotension, flushing, nausea, and rash.

Discontinue treatment with sapropterin dihydrochloride in patients who experience anaphylaxis and initiate appropriate medical treatment. Continue dietary protein and Phe restriction in patients who experience anaphylaxis.

5.2. Upper Gastrointestinal Mucosal Inflammation

Gastrointestinal (GI) adverse reactions suggestive of upper GI mucosal inflammation have been reported with sapropterin dihydrochloride tablets. Serious adverse reactions included esophagitis and gastritis [see *Adverse Reactions (6.2)*]. If left untreated, these could lead to severe sequelae including esophageal stricture, esophageal ulcer, gastric ulcer, and bleeding and such complications have been reported in patients receiving sapropterin dihydrochloride tablets. Monitor patients for signs and symptoms of upper GI mucosal inflammation.

5.3. Hypophenylalaninemia

In clinical trials of sapropterin dihydrochloride tablets, some PKU patients experienced hypophenylalaninemia (low blood Phe) during treatment with sapropterin dihydrochloride tablets. In a clinical study of pediatric patients younger than 7 years old treated with sapropterin dihydrochloride tablets 20 mg/kg per day, the incidence of hypophenylalaninemia was higher than in clinical trials of older patients [*see Adverse Reactions (6.1)*]

5.4. Monitoring Blood Phe Levels During Treatment

Prolonged elevations of blood Phe levels in patients with PKU can result in severe neurologic damage, including severe intellectual disability, developmental delay, microcephaly, delayed speech, seizures, and behavioral abnormalities. Conversely, prolonged levels of blood Phe that are too low have been associated with catabolism and endogenous protein breakdown, which has been associated with adverse developmental outcomes. Active management of dietary Phe intake while taking sapropterin dihydrochloride tablets are required to ensure adequate Phe control and nutritional balance. Monitor blood Phe levels during treatment to ensure adequate blood Phe level control. Frequent blood monitoring is recommended in the pediatric population [*see Dosage and Administration (2.1)*].

5.5. Lack of Biochemical Response to Sapropterin dihydrochloride

Some patients with PKU do not show biochemical response (reduction in blood Phe) with treatment with sapropterin dihydrochloride tablets. In two clinical trials at a sapropterin dihydrochloride tablets dose of 20 mg/kg per day, 56% to 75% of pediatric PKU patients showed a biochemical response to sapropterin dihydrochloride tablets, and in one clinical trial at a dose of 10 mg/kg per day, 20% of adult and pediatric PKU patients showed a biochemical response to sapropterin dihydrochloride tablets [*see Clinical Studies (14)*].

Biochemical response to sapropterin dihydrochloride tablets treatment cannot generally be predetermined by laboratory testing (e.g., molecular testing), and should be determined through a therapeutic trial (evaluation) of sapropterin dihydrochloride tablets response [*see Dosage and Administration (2.1)*].

5.6. Interaction with Levodopa

In a 10-year postmarketing safety surveillance program for a non-PKU indication using another sapropterin product, 3 patients with underlying neurological disorders experienced seizures, exacerbation of seizures, over-stimulation, and irritability during co-administration of levodopa and sapropterin. Monitor patients who are receiving levodopa for changes in neurological status during treatment with sapropterin dihydrochloride [*see Drug Interactions (7)*].

5.7. Hyperactivity

In the sapropterin dihydrochloride postmarketing safety surveillance program, 2 patients with PKU experienced hyperactivity when treated with sapropterin dihydrochloride [*see Adverse Reactions (6.2)*]. Monitor patients for hyperactivity.

6. ADVERSE REACTIONS

6.1. Clinical Trials Experience

Because clinical trials are conducted under widely varying conditions, adverse reaction

rates observed in the clinical trials of a drug cannot be directly compared to the rates in the clinical trials of another drug and may not reflect the rates observed in clinical practice.

PKU Clinical Studies

The safety of sapropterin dihydrochloride was evaluated in 7 clinical studies in patients with PKU (aged 1 month to 50 years) [see *Clinical Studies (14)*].

In Studies 1-4 (controlled and uncontrolled studies), 579 patients with PKU aged 4 to 49 years received sapropterin dihydrochloride in doses ranging from 5 to 20 mg/kg per day for lengths of treatment ranging from 1 to 164 weeks. The patient population was evenly distributed in gender, and approximately 95% of patients were Caucasian. The most common adverse reactions ($\geq 4\%$ of patients) were headache, rhinorrhea, pharyngolaryngeal pain, diarrhea, vomiting, cough, and nasal congestion.

The data described in Table 3 reflect exposure of 74 patients with PKU to sapropterin dihydrochloride at doses of 10 to 20 mg/kg per day for 6 to 10 weeks in two double-blind, placebo-controlled clinical trials (Studies 2 and 4).

Table 3 enumerates adverse reactions occurring in at least 4% of patients treated with sapropterin dihydrochloride in the double-blind, placebo-controlled clinical trials described above.

Table 3: Summary of Adverse Reactions Occurring in $\geq 4\%$ of Patients in Placebo-Controlled Clinical Studies with Sapropterin Dihydrochloride

MedDRA Preferred Term	Treatment	
	Sapropterin Dihydrochloride (N=74)	Placebo(N=59)
	No. Patients (%)	No. Patients (%)
Headache	11 (15)	8 (14)
Rhinorrhea	8 (11)	0
Pharyngolaryngeal pain	7 (10)	1 (2)
Diarrhea	6 (8)	3 (5)
Vomiting	6 (8)	4 (7)
Cough	5 (7)	3 (5)
Nasal congestion	3 (4)	0

In open-label, uncontrolled clinical trials (Studies 1 and 3) all patients received sapropterin dihydrochloride in doses of 5 to 20 mg/kg per day, and adverse reactions were similar in type and frequency to those reported in the double-blind, placebo-controlled clinical trials [see *Clinical Studies (14)*].

In Study 5, 65 pediatric patients with PKU aged 1 month to 6 years received sapropterin dihydrochloride 20 mg/kg per day for 6 months. Adverse reactions in these patients were similar in frequency and type as those seen in other sapropterin dihydrochloride clinical trials except for an increased incidence of low Phe levels.

Twenty-five percent (16 out of 65) of patients developed Phe levels below normal for age [see *Warnings and Precautions (5.3)*, *Pediatric Use (8.4)*, and *Clinical Studies (14)*].

In Study 6, a long term, open-label, extension study of 111 patients aged 4 to 50 years, receiving Sapropterin dihydrochloride in doses ranging from 5 to 20 mg/kg per day, adverse reactions were similar in type and frequency to those reported in the previous

clinical studies. Fifty-five patients received Sapropterin dihydrochloride both as dissolved and intact tablets. There were no notable differences in the incidence or severity of adverse reactions between the two methods of administration. The mean (\pm SD) exposure to sapropterin for the entire study population was 659 ± 221 days (maximum 953 days).

In Study 7, 27 pediatric patients with PKU aged 0 to 4 years received sapropterin dihydrochloride 10 mg/kg per day or 20 mg/kg per day. Adverse reactions were similar in type and frequency to those observed in other clinical trials, with the addition of rhinitis, which was reported in 2 subjects (7.4%).

Safety Experience from Clinical Studies for Non-PKU Indications

Approximately 800 healthy subjects and patients with disorders other than PKU, some of whom had underlying neurologic disorders or cardiovascular disease, have been administered a different formulation of the same active ingredient (sapropterin) in approximately 19 controlled and uncontrolled clinical trials. In these clinical trials, subjects were administered sapropterin at doses ranging from 1 to 100 mg/kg per day for lengths of exposure from 1 day to 2 years.

Serious and severe adverse reactions (regardless of causality) during sapropterin administration were seizures, exacerbation of seizures [see *Warnings and Precautions* (5.3)], dizziness, gastrointestinal bleeding, post-procedural bleeding, headache, irritability, myocardial infarction, overstimulation, and respiratory failure. Common adverse reactions were headache, peripheral edema, arthralgia, polyuria, agitation, dizziness, nausea, pharyngitis, abdominal pain, upper abdominal pain, and upper respiratory tract infection.

6.2. Postmarketing Experience

The following adverse reactions have been reported during post-approval use of sapropterin dihydrochloride. Because these reactions are reported voluntarily from a population of uncertain size, it is not always possible to reliably estimate their frequency or establish a causal relationship to drug exposure.

Hypersensitivity reactions including anaphylaxis and rash: Most hypersensitivity reactions occurred within several days of initiating treatment [see *Warnings and Precautions* (5.1)].

Gastrointestinal reactions: esophagitis, gastritis, oropharyngeal pain, pharyngitis, esophageal pain, abdominal pain, dyspepsia, nausea, and vomiting [see *Warnings and Precautions* (5.2)].

Hyperactivity: Two cases have been reported. In one case, the patient received an accidental overdose of sapropterin dihydrochloride tablets [see *Warnings and Precautions* (5.6), *Overdosage* (10)].

7. DRUG INTERACTIONS

Table 4 includes drugs with clinically important drug interactions when administered with sapropterin dihydrochloride and instructions for preventing or managing them.

Table 4: Clinically Relevant Drug Interactions

Levodopa	Sapropterin dihydrochloride
----------	-----------------------------

<p><i>Clinical Impact</i></p>	<p>may increase the availability of tyrosine, a precursor of levodopa. Neurologic events were reported post-marketing in patients receiving sapropterin and levodopa concomitantly for a non- PKU indication [see <i>Warnings and Precautions (5.5)</i>]</p>
<p><i>Intervention</i></p>	<p>Monitor patients for a change in neurologic status.</p>
<p>Inhibitors of Folate Synthesis (e.g., methotrexate, valproic acid, phenobarbital, trimethoprim)</p>	
<p><i>Clinical Impact</i></p>	<p><i>In vitro</i> and <i>in vivo</i> nonclinical data suggest that drugs that inhibit folate synthesis may decrease the bioavailability of endogenous BH4 by inhibiting the enzyme dihydrofolate reductase, which is involved in the recycling (regeneration) of BH4. This reduction in net BH4 levels may increase Phe levels.</p>
	<p>Consider monitoring blood Phe levels more frequently</p>

<i>Intervention</i>	during concomitant administration. An increased dosage of sapropterin dihydrochloride tablets may be necessary to achieve a biochemical response.
Drugs Affecting Nitric Oxide-Mediated Vasorelaxation (e.g., PDE-5 inhibitors such as sildenafil, vardenafil, or tadalafil)	
<i>Clinical Impact</i>	Both sapropterin dihydrochloride and PDE-5 inhibitors may induce vasorelaxation. A reduction in blood pressure could occur; however, the combined use of these medications has not been evaluated in humans.
<i>Intervention</i>	Monitor blood pressure.

8. USE IN SPECIFIC POPULATIONS

8.1. Pregnancy

Risk Summary

Available pregnancy registry data have not reported an association with sapropterin dihydrochloride and major birth defects, miscarriage, or adverse maternal or fetal outcomes when was used during pregnancy (*see Data*).

An embryo-fetal development study with sapropterin dihydrochloride in rats using oral doses up to 3 times the maximum recommended human dose (MRHD) given during the period of organogenesis showed no effects. In a rabbit study using oral administration of sapropterin dihydrochloride during the period of organogenesis, a rare defect, holoprosencephaly, was noted at 10 times the MRHD.

All pregnancies have a background risk of major birth defects, pregnancy loss, or other adverse pregnancy outcomes. In the U.S. general population, the estimated background

risk of major birth defects and miscarriage in clinically recognized pregnancies is 2 to 4% and 15 to 20%, respectively. The estimated background risk of major birth defects and miscarriage in pregnant women with PKU who maintain blood phenylalanine concentrations greater than 600 micromol/L during pregnancy is greater than the corresponding background risk for pregnant women without PKU.

Clinical Considerations

Disease-Associated Maternal and/or Embryo-Fetal Risk

Uncontrolled blood phenylalanine concentrations before and during pregnancy are associated with an increased risk of adverse pregnancy outcomes and fetal adverse effects. To reduce the risk of hyperphenylalaninemia-induced fetal adverse effects, blood phenylalanine concentrations should be maintained between 120 and 360 micromol/L during pregnancy and during the 3 months before conception [see Dosage and Administration 2.1)].

Data

Human Data

Uncontrolled Maternal PKU

Available data from the Maternal Phenylketonuria Collaborative Study on 468 pregnancies and 331 live births in PKU-affected women demonstrated that uncontrolled Phe levels above 600 micromol/L are associated with a very high incidence of neurological, cardiac, facial dysmorphism, and growth anomalies. Control of blood phenylalanine during pregnancy is essential to reduce the incidence of Phe-induced teratogenic effects.

Animal Data

No effects on embryo-fetal development were observed in a reproduction study in rats using oral doses of up to 400 mg/kg per day sapropterin dihydrochloride (about 3 times the MRHD of 20 mg/kg per day, based on body surface area) administered during the period of organogenesis. However, in a rabbit reproduction study, oral administration of a maximum dose of 600 mg/kg per day (about 10 times the MRHD, based on body surface area) during the period of organogenesis was associated with a non-statistically significant increase in the incidence of holoprosencephaly in two high dose-treated litters (4 fetuses), compared to one control-treated litter (1 fetus).

8.3. Lactation

Risk Summary

There are insufficient data to assess the presence of sapropterin in human milk and no data on the effects on milk production. In postmarketing pregnancy registries, a total of 16 women from both registries were identified as breastfeeding for a mean of 3.5 months. No lactation-related safety concerns were reported in infants of mothers nursing during maternal treatment with sapropterin dihydrochloride. Sapropterin is present in the milk of lactating rats following intravenous administration, but not following oral administration.

The developmental and health benefits of breastfeeding should be considered along with the mother's clinical need for sapropterin dihydrochloride and any potential adverse effects on the breastfed child from sapropterin dihydrochloride or from the underlying maternal condition.

8.4. Pediatric Use

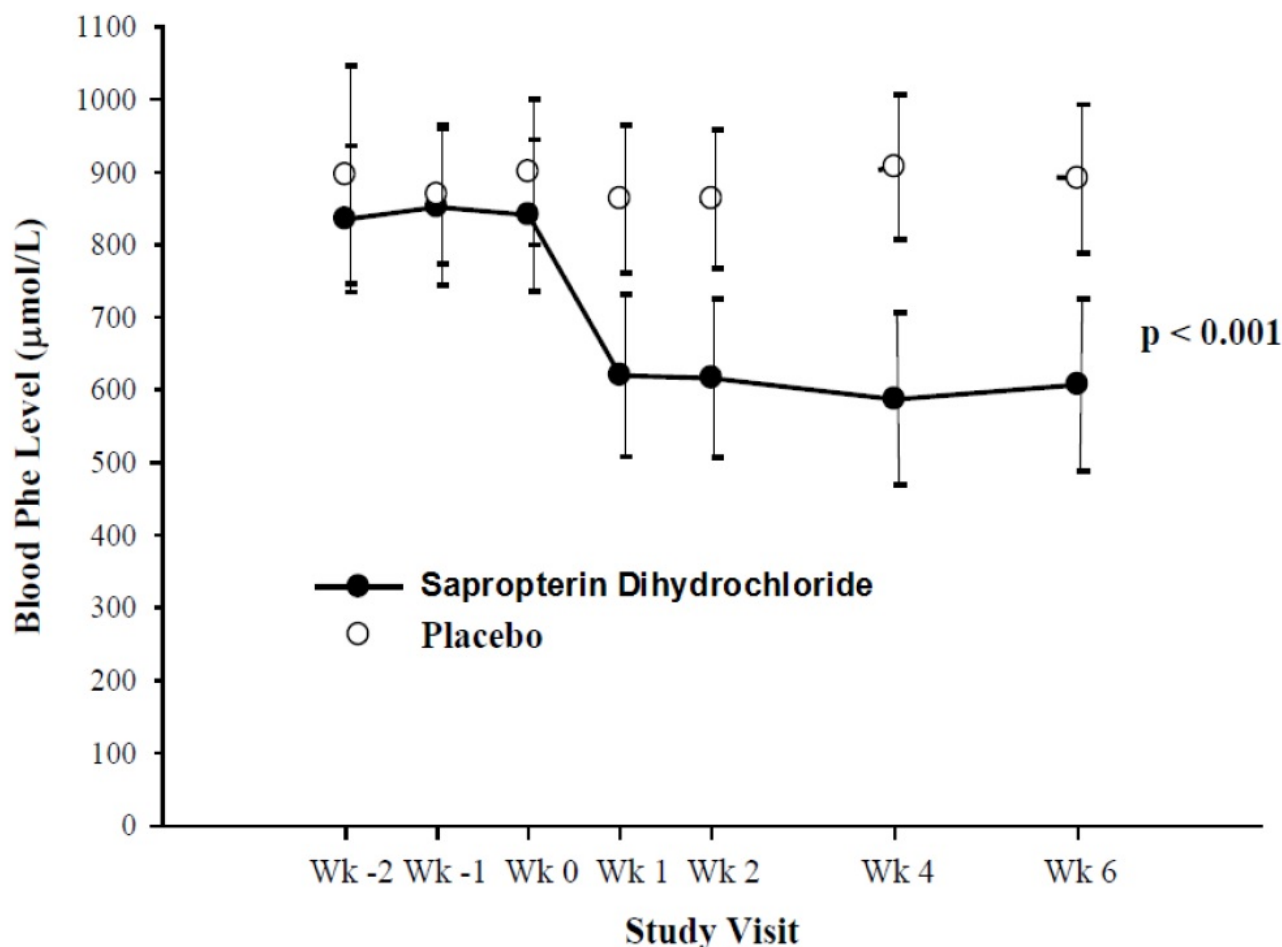
Pediatric patients with PKU, ages 1 month to 16 years, have been treated with sapropterin dihydrochloride in clinical trials [see *Clinical Studies (14)*].

The efficacy and safety of sapropterin dihydrochloride have not been established in neonates. The safety of sapropterin dihydrochloride has been established in children younger than 4 years in trials of 6 months duration and in children 4 years and older in trials of up to 3 years in length [see *Adverse Reactions (6.1)*].

In children aged 1 month and older, the efficacy of sapropterin dihydrochloride has been demonstrated in trials of 6 weeks or less in duration [see *Clinical Studies (14)*].

In a multicenter, open-label, single arm study, 57 patients aged 1 month to 6 years who were defined as sapropterin dihydrochloride responders after 4 weeks of sapropterin dihydrochloride treatment and Phe dietary restriction were treated for 6 months with sapropterin dihydrochloride at 20 mg/kg per day. The effectiveness of sapropterin dihydrochloride alone on reduction of blood Phe levels beyond 4 weeks could not be determined due to concurrent changes in dietary Phe intake during the study. Mean (\pm SD) blood Phe values over time for patients aged 1 month to <2 years and 2 to <7 years are shown in Figure 1.

Figure 1: Mean Blood Phe Level Over Time by Age (years) (N=57)



*Error bars indicate 95% confidence interval.

8.5. Geriatric Use

Clinical studies of sapropterin dihydrochloride in patients with PKU did not include patients aged 65 years and older. It is not known whether these patients respond differently than younger patients.

10. OVERDOSAGE

Two unintentional overdosages with sapropterin dihydrochloride have been reported. One adult patient in a sapropterin dihydrochloride clinical trial received a single sapropterin dihydrochloride dose of 4,500 mg (36 mg/kg) instead of 2,600 mg (20 mg/kg). The patient reported mild headache and mild dizziness immediately after taking the dose; both symptoms resolved within 1 hour with no treatment intervention. There were no associated laboratory test abnormalities. The patient suspended therapy for 24 hours and then restarted sapropterin dihydrochloride with no reports of abnormal signs or symptoms. In postmarketing, one pediatric patient received sapropterin dihydrochloride doses of 45 mg/kg per day instead of 20 mg/kg per day. The patient reported hyperactivity that began at an unspecified time after overdosage and resolved after the sapropterin dihydrochloride dose was reduced to 20 mg/kg per day.

In a clinical study to evaluate the effects of sapropterin dihydrochloride on cardiac repolarization, a single supra-therapeutic dose of 100 mg/kg (5 times the maximum recommended dose) was administered to 54 healthy adults. No serious adverse reactions were reported during the study. The only adverse reactions reported in more than 1 subject who received the supra-therapeutic dose were upper abdominal pain (6%) and dizziness (4%). A dose-dependent shortening of the QT interval was observed [see *Clinical Pharmacology* (12.2)].

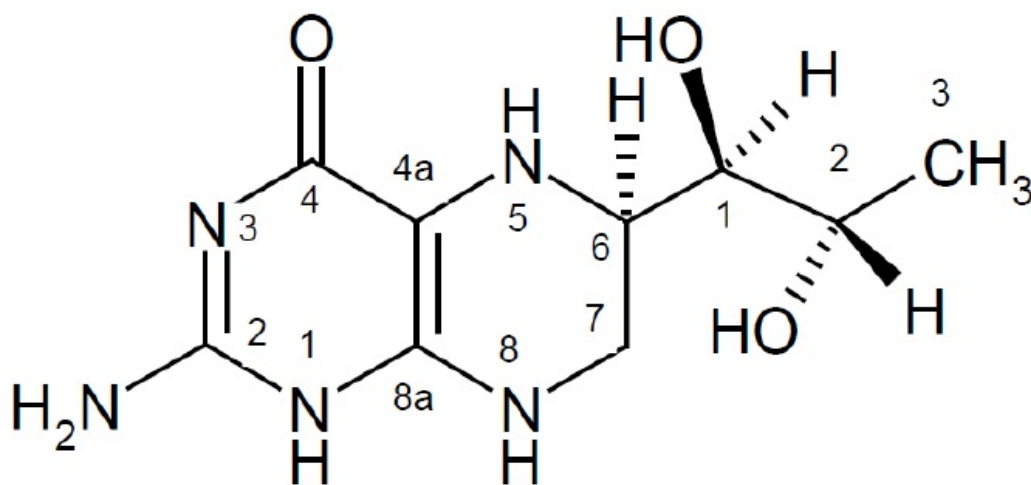
Patients should be advised to notify their physicians in cases of overdosage.

11. DESCRIPTION

Sapropterin dihydrochloride tablets is an orally administered Phenylalanine Hydroxylase activator (or PAH activator). Sapropterin dihydrochloride, the active pharmaceutical ingredient in sapropterin dihydrochloride tablets, is a synthetic preparation of the dihydrochloride salt of naturally occurring tetrahydrobiopterin (BH₄). Sapropterin dihydrochloride is white to off-white crystalline powder.

The chemical name of sapropterin dihydrochloride is (6R)-2-amino-6-[(1R,2S)-1,2-dihydroxypropyl]-5,6,7,8-tetrahydro-4(1H)-pteridinone dihydrochloride and the molecular formula is C₉H₁₅N₅O₃·2HCl with a molecular weight of 314.17.

Sapropterin dihydrochloride has the following structural formula:



• 2 HCl

Sapropterin dihydrochloride is supplied as tablets containing 100 mg of sapropterin dihydrochloride (equivalent to 76.8 mg of sapropterin base).

Tablets are off-white to light yellow, mottled, uncoated, round shaped tablets debossed with 'P' on one side and '720' on other side. Each tablet contains the following inactive ingredients: ascorbic acid, colloidal silicon dioxide, copovidone, crospovidone, dibasic calcium phosphate anhydrous, mannitol, riboflavin and sodium stearyl fumarate.

12. CLINICAL PHARMACOLOGY

12.1. Mechanism of Action

Sapropterin dihydrochloride is a synthetic form of BH₄, the cofactor for the enzyme phenylalanine hydroxylase (PAH). PAH hydroxylates Phe through an oxidative reaction to form tyrosine. In patients with PKU, PAH activity is absent or deficient. Treatment with BH₄ can activate residual PAH enzyme activity, improve the normal oxidative metabolism of Phe, and decrease Phe levels in some patients.

12.2. Pharmacodynamics

In PKU patients who are responsive to BH₄ treatment, blood Phe levels decrease within 24 hours after a single administration of sapropterin dihydrochloride, although maximal effect on Phe level may take up to a month, depending on the patient. A single daily dose of sapropterin dihydrochloride is adequate to maintain stable blood Phe levels over a 24-hour period. Twelve patients with blood Phe levels ranging from 516 to 986 µmol/L (mean 747±153 µmol/L) were assessed with 24-hour blood Phe level monitoring following a daily morning dose of 10 mg/kg per day. The blood Phe level remained stable during a 24-hour observation period. No substantial increases in blood Phe levels were observed following food intake throughout the 24-hour period.

Sapropterin dihydrochloride dose-response relationship was studied in an open-label, forced titration study at doses of 5 mg/kg per day, then 20 mg/kg per day, and then 10 mg/kg per day (Study 3) [see *Clinical Studies (14.1)*]. Individual blood Phe levels were highly variable among patients. The mean blood Phe level observed at the end of each 2-week dosing period decreased as the dose of sapropterin dihydrochloride increased, demonstrating an inverse relationship between the dose of sapropterin dihydrochloride and mean blood Phe levels.

Cardiac Electrophysiology

A thorough QTc study was performed in 56 healthy adults. This randomized, placebo and active controlled crossover study was conducted to determine if a single supra-therapeutic (100 mg/kg) dose of sapropterin dihydrochloride or a single therapeutic dose (20 mg/kg) of sapropterin dihydrochloride had an effect on cardiac repolarization. In this study, sapropterin dihydrochloride was administered after dissolving tablets in water under fed condition. This study demonstrated a dose-dependent shortening of the QT interval. The maximum placebo-subtracted mean change from baseline of the QTc interval was -3.69 and -8.32 ms (lower bound of 90% CI: -5.3 and -10.6 ms) at 20 and 100 mg/kg, respectively.

12.3. Pharmacokinetics

Studies in healthy subjects have shown comparable absorption of sapropterin when tablets are dissolved in water or orange juice and taken under fasted conditions.

Administration of dissolved tablets after a high-fat/high-calorie meal resulted in mean increases in C_{max} of 84% and AUC of 87% (dissolved in water). However, there was extensive variability in individual subject values for C_{max} and AUC across the different modes of administration and meal conditions. In the clinical trials of sapropterin dihydrochloride, drug was administered in the morning as a dissolved tablet without regard to meals. The mean elimination half-life in PKU patients was approximately 6.7 hours (range 3.9 to 17 hours), comparable with values seen in healthy subjects (range 3.0 to 5.3 hours).

A study in healthy adults with 10 mg/kg of sapropterin dihydrochloride demonstrated that the absorption via intact tablet administration was 40% greater than via dissolved tablet administration under fasted conditions based on AUC_{0-t} . The administration of intact tablets under fed conditions resulted in an approximately 43% increase in the extent of absorption compared to fasted conditions based on AUC_{0-t} [see *Dosage and Administration* (2.2)].

Population pharmacokinetic analysis of sapropterin including patients from 1 month to 49 years of age showed that body weight is the only covariate substantially affecting clearance or distribution volume (see Table 5). Pharmacokinetics in patients >49 years of age have not been studied.

Table 5. Apparent Plasma Clearance by Age

Parameter	0 to <1 yr* (N=10)	1 to <6 yr* (N=57)	6 to <12 yr† (N=23)	12 to <18 yr† (N=24)	≥18 yr† (N=42)
CL/F (L/hr/kg) Mean ± SD (Median)	81.5 ± 92.4 (53.6)	50.7 ± 20.1 (48.4)	51.7 ± 21.9 (47.4)	39.2 ± 9.3 (38.3)	37.9 ± 20.2 (31.8)

*Evaluated at 20 mg/kg per day dose

†Evaluated at 5, 10, or 20 mg/kg per day doses

Metabolism

Sapropterin is a synthetic form of tetrahydrobiopterin (BH4) and is expected to be metabolized and recycled by the same endogenous enzymes. *In vivo* endogenous BH4 is converted to quinoid dihydrobiopterin and is metabolized to dihydrobiopterin and biopterin. The enzymes dihydrofolate reductase and dihydropteridine reductase are responsible for the metabolism and recycling of BH4.

Drug Interaction Studies

Clinical Studies

In healthy subjects, administration of a single dose of sapropterin dihydrochloride at the maximum therapeutic dose of 20 mg/kg had no effect on the pharmacokinetics of a single dose of digoxin (P-gp substrate) administered concomitantly.

In Vitro Studies Where Drug Interaction Potential Was Not Further Evaluated Clinically

The potential for sapropterin to induce or inhibit cytochrome P450 enzymes was evaluated in *in vitro* studies which showed sapropterin did not inhibit CYP 1A2, 2B6, 2C8, 2C9, 2C19, 2D6, or 3A4/5, nor induce CYP 1A2, 2B6, or 3A4/5.

In vitro sapropterin did not inhibit OAT1, OAT3, OCT2, MATE1, and MATE2-K transporters. The potential for sapropterin to inhibit OATP1B1 and OATP1B3 has not been adequately studied. *In vitro*, sapropterin inhibits breast cancer resistance protein (BCRP) but the potential for a clinically significant increase in systemic exposure of BCRP

substrates by sapropterin dihydrochloride appears to be low.

13. NONCLINICAL TOXICOLOGY

13.1. Carcinogenesis, Mutagenesis, Impairment of Fertility

A 2-year carcinogenicity study was conducted in F-344 rats, and a 78-week carcinogenicity study was conducted in CD-1 mice. In the 104-week oral carcinogenicity study in rats, sapropterin dihydrochloride doses of 25, 80, and 250 mg/kg per day (0.2, 0.7, and 2 times the maximum recommended human dose of 20 mg/kg per day, respectively, based on body surface area) were used. In the 78-week oral carcinogenicity study in mice, sapropterin dihydrochloride doses of 25, 80, and 250 mg/kg per day (0.1, 0.3, and 2 times the recommended human dose, respectively, based on body surface area) were used. In the 2-year rat carcinogenicity study, there was a statistically significant increase in the incidence of benign adrenal pheochromocytoma in male rats treated with the 250 mg/kg per day (about 2 times the maximum recommended human dose, based on body surface area) dose, as compared to vehicle treated rats. The mouse carcinogenicity study showed no evidence of a carcinogenic effect, but the study was not ideal due to its duration of 78 instead of 104 weeks.

Sapropterin dihydrochloride was genotoxic in the *in vitro* Ames test at concentrations of 625 µg (TA98) and 5000 µg (TA100) per plate, without metabolic activation. However, no genotoxicity was observed in the *in vitro* Ames test with metabolic activation. Sapropterin dihydrochloride was genotoxic in the *in vitro* chromosomal aberration assay in Chinese hamster lung cells at concentrations of 0.25 and 0.5 mM. Sapropterin dihydrochloride was not mutagenic in the *in vivo* micronucleus assay in mice at doses up to 2000 mg/kg per day (about 8 times the maximum recommended human dose of 20 mg/kg per day, based on body surface area). Sapropterin dihydrochloride, at oral doses up to 400 mg/kg per day (about 3 times the maximum recommended human dose, based on body surface area) was found to have no effect on fertility and reproductive function of male and female rats.

14. CLINICAL STUDIES

The efficacy of sapropterin dihydrochloride was evaluated in five clinical studies in patients with PKU.

Study 1 was a multicenter, open-label, uncontrolled clinical trial of 489 patients with PKU, ages 8 to 48 years (mean 22 years), who had baseline blood Phe levels ≥ 450 µmol/L and who were not on Phe-restricted diets. All patients received treatment with Sapropterin dihydrochloride 10 mg/kg per day for 8 days. For the purposes of this study, response to sapropterin dihydrochloride treatment was defined as a $\geq 30\%$ decrease in blood Phe from baseline. At Day 8, 96 patients (20%) were identified as responders.

Study 2 was a multicenter, double-blind, placebo-controlled study of 88 patients with PKU who responded to sapropterin dihydrochloride in Study 1. After a washout period from Study 1, patients were randomized equally to either sapropterin dihydrochloride 10 mg/kg per day (N=41) or placebo (N=47) for 6 weeks. Efficacy was assessed by the mean change in blood Phe level from baseline to Week 6 in the sapropterin dihydrochloride-treated group as compared to the mean change in the placebo group.

The results showed that at baseline, the mean (\pm SD) blood Phe level was 843 (\pm 300) µmol/L in the sapropterin dihydrochloride-treated group and 888 (\pm 323) µmol/L in the

placebo group. At Week 6, the sapropterin dihydrochloride treated group had a mean (\pm SD) blood Phe level of 607 (\pm 377) μ mol/L, and the placebo group had a mean blood Phe level of 891 (\pm 348) μ mol/L. At Week 6, the sapropterin dihydrochloride- and placebo treated groups had mean changes in blood Phe level of -239 and 6 μ mol/L, respectively (mean percent changes of -29% (\pm 32) and 3% (\pm 33), respectively). The difference between the groups was statistically significant ($p < 0.001$) (Table 6).

Table 6: Blood Phe Results in Study 2

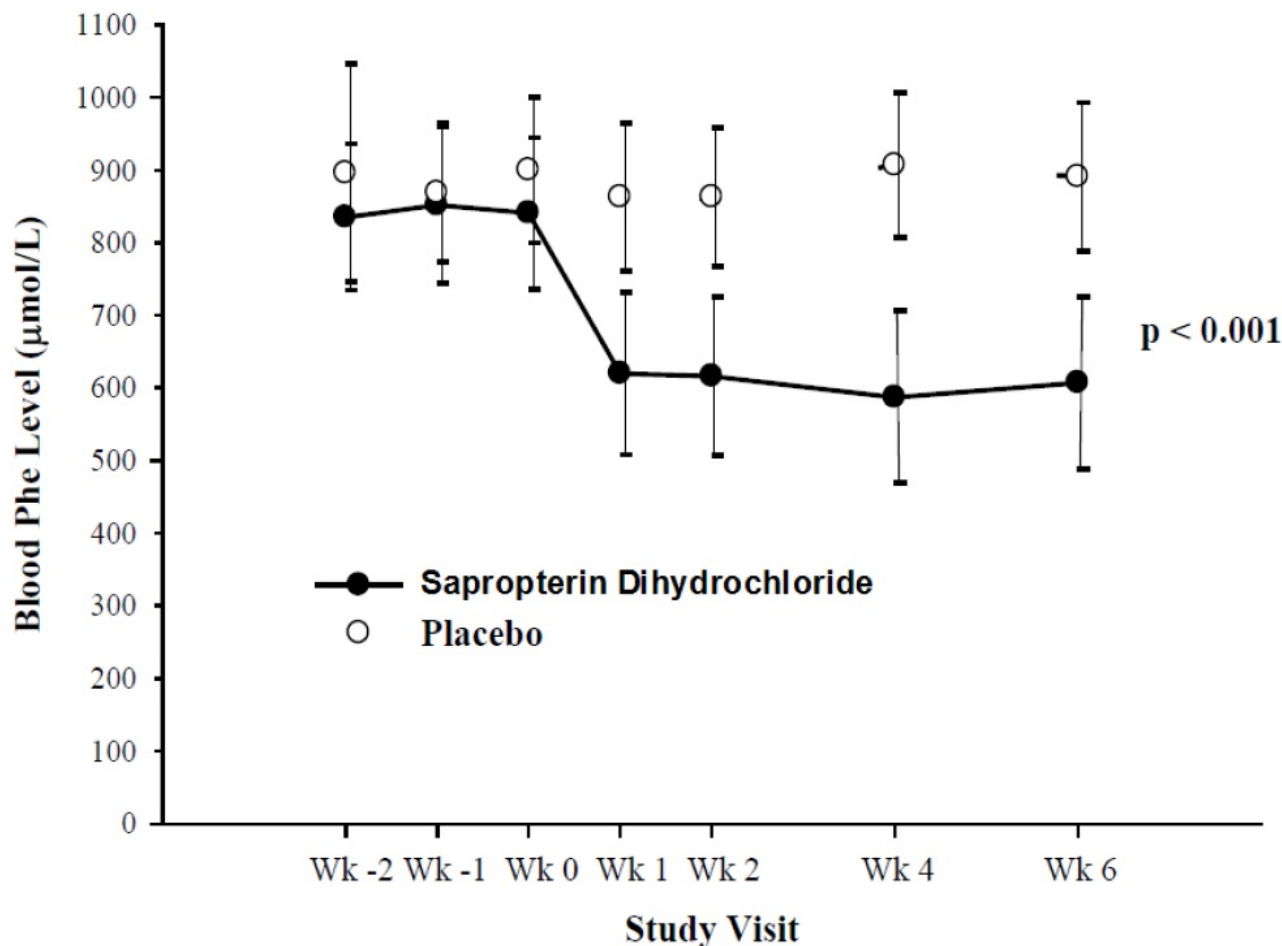
	Sapropterin (N=41)	Placebo (N=47)
Baseline Blood Phe Level* (μmol/L)		
Mean (\pm SD)	843 (\pm 300)	888 (\pm 323)
Percentiles (25 th , 75 th)	620, 990	618, 1141
Week 6 Blood Phe Level (μmol/L)		
Mean (\pm SD)	607 (\pm 377)	891 (\pm 348)
Percentiles (25 th , 75 th)	307, 812	619, 1143
Mean Change in Blood Phe From Baseline to Week 6 (μmol/L)		
Adjusted Mean (\pm SE) [†]	-239 (\pm 38)	6 (\pm 36)
Percentiles (25 th , 75 th)	-397, -92	-96, 93
Mean Percent Change in Blood Phe From Baseline to Week 6		
Mean (\pm SD)	- 29 (\pm 32)	3 (\pm 33)
Percentiles (25 th , 75 th)	-61, -11	-13, 12

*The mean baseline levels shown in this table represent the mean of 3 pretreatment levels (Wk -2, Wk -1, and Wk 0). Treatment with sapropterin dihydrochloride or placebo started at Wk 0.

[†] p -value < 0.001, adjusted mean and standard error from an ANCOVA model with change in blood Phe level from baseline to Week 6 as the response variable, and both treatment group and baseline blood Phe level as covariates.

Change in blood Phe was noted in the sapropterin dihydrochloride-treated group at Week 1 and was sustained through Week 6 (Figure 2).

Figure 2: Mean Blood Phenylalanine (Phe) Level Over Time*



*Error bars indicate 95% confidence interval.

Study 3 was a multicenter, open-label, extension study in which 80 patients who responded to sapropterin dihydrochloride treatment in Study 1 and completed Study 2 underwent 6 weeks of forced dose-titration with 3 different doses of sapropterin dihydrochloride. Treatments consisted of 3 consecutive 2-week courses of sapropterin dihydrochloride at doses of 5, then 20, and then 10 mg/kg per day. Blood Phe level was monitored after 2 weeks of treatment at each dose level. At baseline, mean (\pm SD) blood Phe was 844 (\pm 398) μ mol/L. At the end of treatment with 5, 10, and 20 mg/kg per day, mean (\pm SD) blood Phe levels were 744 (\pm 384) μ mol/L, 640 (\pm 382) μ mol/L, and 581 (\pm 399) μ mol/L, respectively (Table 7).

Table 7: Blood Phe Results From Forced Dose-Titration in Study 3

Sapropterin Dihydrochloride Dose Level (mg/kg per day)	No. of Patients	Mean (\pm SD) Blood Phe Level (μ mol/L)	Mean Changes (\pm SD) in Blood Phe Level From Week 0 (μ mol/L)
Baseline (No Treatment)	80	844 (\pm 398)	—
5	80	744 (\pm 384)	-100 (\pm 295)
10	80	640 (\pm 382)	-204 (\pm 303)
20	80	581 (\pm 399)	-263 (\pm 318)

Study 4 was a multicenter study of 90 pediatric patients with PKU, ages 4 to 12 years,

who were on Phe-restricted diets and who had blood Phe levels ≤ 480 $\mu\text{mol/L}$ at screening. All patients were treated with open-label sapropterin dihydrochloride 20 mg/kg per day for 8 days. Response to sapropterin dihydrochloride was defined as a $\geq 30\%$ decrease in blood Phe from baseline at Day 8. At Day 8, 50 patients (56%) had a $\geq 30\%$ decrease in blood Phe.

Study 5 was an open label, single arm, multicenter trial in 93 pediatric patients with PKU, aged 1 month to 6 years, who had Phe levels greater than or equal to 360 $\mu\text{mol/L}$ at screening. All patients were treated with sapropterin dihydrochloride at 20 mg/kg per day and maintained on a Phe-restricted diet. At Week 4, 57 patients (61%) were identified as responders (defined as $\geq 30\%$ decreased in blood Phe from baseline) (see Figure 1 section 8.4).

16. HOW SUPPLIED/STORAGE AND HANDLING

Sapropterin Dihydrochloride Tablets, 100 mg, are off-white to light yellow, mottled, uncoated, round shaped tablets debossed with 'P' on one side and '720' on other side. The tablets are supplied as follows:

NDC 49884-720-11 Bottle of 30 tablets

NDC 49884-720-08 Bottle of 120 tablets

Storage

Store sapropterin dihydrochloride tablets at 20° to 25°C (68° to 77°F); excursions allowed between 15° to 30°C (59° to 86°F) [see USP Controlled Room Temperature]. Keep container tightly closed. Protect from moisture.

17. PATIENT COUNSELING INFORMATION

Advise the patient or caregiver to read the FDA-approved patient labeling (Patient Information and Instructions for Use).

Hypersensitivity Reactions Including Anaphylaxis

Advise patients and caregivers to discontinue sapropterin dihydrochloride tablets and contact the patient's healthcare provider immediately if they experience symptoms of anaphylaxis, including (but not limited to) wheezing, dyspnea, coughing, hypotension, flushing, nausea, and rash. Continue nutritional management including dietary protein and Phe restriction [see *Warnings and Precautions (5.1)*].

Upper Gastrointestinal Mucosal Inflammation

Advise patients and caregivers to contact their healthcare provider if the patient experiences signs and symptoms suggestive of upper GI mucosal inflammation, including nausea, vomiting, dysphagia, dyspepsia, loss of appetite; oropharyngeal, esophageal, or upper abdominal pain [see *Warnings and Precautions (5.3)*].

Hypophenylalaninemia [see *Warnings and Precautions (5.3)*]

Advise patients and caregivers that sapropterin dihydrochloride tablets may cause hypophenylalaninemia (low blood Phe levels), especially in pediatric patients younger than 7 years of age.

Monitoring of Blood Phe Levels [see *Warnings and Precautions (5.4)*]

Advise patients and caregivers that frequent blood Phe monitoring is important to ensure blood Phe levels are in the desirable range and that they should maintain dietary

protein and Phe restriction while on sapropterin dihydrochloride.

Prolonged hyperphenylalaninemia (high blood Phe levels) in patients with PKU can result in severe neurologic damage, including intellectual disability, developmental delay, microcephaly, delayed speech, seizures, and behavioral abnormalities.

Lack of Biochemical Response to sapropterin dihydrochloride tablets

Some patients do not show a biochemical response (blood Phe reduction) when treated with sapropterin dihydrochloride tablets. Advise patients and caregivers to discontinue treatment with sapropterin dihydrochloride tablets if the patient does not show an adequate biochemical response in blood Phe after one month of treatment with sapropterin dihydrochloride tablets 20 mg/kg per day [see *Dosage and Administration (2.1)*, *Warnings and Precautions (5.4)*].

Interaction with Levodopa

Advise patients and caregivers that patients with underlying neurological disorders taking sapropterin dihydrochloride tablets in combination with levodopa may experience seizures, exacerbation of seizures, over-stimulation or irritability. Inform patients and caregivers to contact their healthcare provider if the patient has a change in neurologic status during treatment with sapropterin dihydrochloride tablets [see *Warnings and Precautions (5.5)*].

Hyperactivity

Advise patients and caregivers that sapropterin dihydrochloride tablets may cause hyperactivity and to contact their healthcare provider if the patient experiences hyperactivity, restlessness, fidgeting, or excessive talking [see *Warnings and Precautions (5.6)*].

Dosing and Monitoring [see *Dosage and Administration (2.1)*]

Advise patients and caregivers of the following:

- Sapropterin dihydrochloride tablets should be used in conjunction with a PKU-specific diet, including dietary protein and Phe restriction.
- Dietary protein and Phe intake should not be modified during the sapropterin dihydrochloride tablets evaluation period when assessing biochemical response.
- The patient must be evaluated for changes in blood Phe after being treated with sapropterin dihydrochloride tablets at the recommended dose(s) for age to determine if they have a biochemical response and that blood Phe levels and dietary Phe intake should be assessed frequently during the first month of sapropterin dihydrochloride tablets treatment.
- Monitoring of blood Phe levels is important during sapropterin dihydrochloride tablets treatment.

Preparation and Administration [see *Dosage and Administration (2.2)*]

Advise patients and caregivers:

- Sapropterin dihydrochloride tablets can be swallowed whole, dissolved in water or apple juice, or crushed and mixed with a small amount of soft food such as apple sauce or pudding.
- Take sapropterin dihydrochloride tablets with a meal, preferably at the same time each day.

PATIENT INFORMATION

Sapropterin Dihydrochloride Tablets

(SAP-roe-TER-in dye-HYE-droe-KLOR-ide)

What are sapropterin dihydrochloride tablets?

Sapropterin dihydrochloride tablets are a prescription medicine used to lower blood levels of phenylalanine (Phe), in adults and children one month of age and older with a certain type of Phenylketonuria (PKU). Sapropterin dihydrochloride tablets are used along with a Phe-restricted diet.

What should I tell my doctor before taking Sapropterin Dihydrochloride Tablets?

Before you take sapropterin dihydrochloride tablets, tell your doctor about all your medical conditions, including if you:

- are allergic to sapropterin dihydrochloride or any of the ingredients in sapropterin dihydrochloride tablets. See the list of ingredients in sapropterin dihydrochloride tablets at the end of this leaflet.
- have poor nutrition or have loss of appetite.
- are pregnant or plan to become pregnant.
- are breastfeeding or plan to breastfeed. It is not known if sapropterin dihydrochloride tablets passes into your breast milk. Talk to your doctor about the best way to feed your baby if you take sapropterin dihydrochloride tablets.

Tell your doctor about all the medicines you take, including prescription and over-the-counter medicines, vitamins, herbal, and dietary supplements. Sapropterin dihydrochloride tablets and other medicines may interact with each other.

Especially tell your doctor if you take:

- a medicine that contains levodopa
- an antifolate medicine
- sildenafil (Revatio, Viagra), tadalafil (Adcirca, Cialis), vardenafil (Staxyn, Levitra)

Tell your doctor if you are not sure if your medicine is one that is listed above.

Know the medicines you take. Keep a list of them to show your doctor and pharmacist when you get a new medicine.

How should I take Sapropterin Dihydrochloride Tablets?

- Take sapropterin dihydrochloride tablets exactly as your doctor tells you. Your doctor should tell you how much sapropterin dihydrochloride tablets to take and when to take it.
- Your doctor may change your dose of sapropterin dihydrochloride tablets depending on how you respond to treatment.
- Take Sapropterin dihydrochloride tablets 1 time each day with a meal. It is best to take sapropterin dihydrochloride tablets at the same time each day.
- Sapropterin dihydrochloride tablets comes as a tablet.
 - **You can swallow sapropterin dihydrochloride tablets whole or dissolve the tablets in water or apple juice.** You may also crush the tablets and mix in a small amount of soft food, such as apple sauce or pudding before taking.
 - See the detailed "Instructions for Use" that comes with sapropterin dihydrochloride tablets for information about the correct way to dissolve and take a dose of sapropterin dihydrochloride tablets.
- It is not possible to know if sapropterin dihydrochloride tablets will work for you until you start taking sapropterin dihydrochloride tablets. Your doctor will check your blood Phe levels when you start taking sapropterin dihydrochloride tablets to see if the medicine is working.

- During treatment with sapropterin dihydrochloride tablets:
 - Any change you make to your diet may affect your blood Phe level. Follow your doctor's instructions carefully and do not make any changes to your dietary Phe intake without first talking with your doctor. Even if you take sapropterin dihydrochloride tablets, if your Phe blood levels are not well controlled, you can develop severe neurologic problems.
 - Your doctor should continue to monitor your blood Phe levels often during your treatment with sapropterin dihydrochloride tablets, **to make sure that your blood Phe levels are not too high or too low.**
 - If you have a fever, or if you are sick, your blood Phe level may go up. Tell your doctor as soon as possible so they can change your dose of sapropterin dihydrochloride tablets to help keep your blood Phe levels in the desired range.
 - If you forget to take your dose of sapropterin dihydrochloride tablets, take it as soon as you remember that day. Do not take 2 doses in a day.
 - If you take too much Sapropterin dihydrochloride tablets, call your doctor for advice.
- What are the possible side effects of Sapropterin Dihydrochloride Tablets?**

Sapropterin dihydrochloride tablets can cause serious side effects, including:

- **Severe allergic reactions.** Stop taking sapropterin dihydrochloride tablets and get medical help right away if you develop any of these symptoms of a severe allergic reaction:
 - wheezing or trouble breathing
 - flushing
 - coughing
 - nausea
 - feeling lightheaded or you faint
 - rash
- **Inflammation of the lining of the stomach (gastritis) or esophagus (esophagitis).** Gastritis or esophagitis can happen with sapropterin dihydrochloride tablets and may be severe. **Call your doctor right away if you have any of these signs or symptoms:**
 - severe upper stomach-area (abdominal) discomfort or pain, nausea and vomiting
 - blood in your vomit or stool
 - black, tarry stools
 - difficulty swallowing
 - loss of appetite
 - pain in the throat
- **Phe levels that are too low.** Some children under the age of 7 years who take high doses of sapropterin dihydrochloride tablets each day may experience low Phe levels.
- **Too much or constant activity (hyperactivity) can happen with sapropterin dihydrochloride tablets.** Tell your doctor if you have any signs of hyperactivity, including:
 - fidgeting or moving around too much
 - talking too much

The most common side effects of sapropterin dihydrochloride tablets are:

- headache
- runny nose and nasal congestion
- sore throat

- diarrhea
- vomiting
- cough

Tell your doctor if you have any side effect that bothers you or that does not go away.

These are not all the possible side effects of sapropterin dihydrochloride tablets. For more information, ask your doctor or pharmacist. Call your doctor for medical advice about side effects. You may report side effects to FDA at 1-800-FDA-1088.

How should I store Sapropterin Dihydrochloride Tablets?

- Store sapropterin dihydrochloride tablets at room temperature between 68° to 77°F (20° to 25°C).
- Keep sapropterin dihydrochloride tablets in the original bottle with the cap closed tightly.
- Protect from moisture.

Keep sapropterin dihydrochloride tablets and all medicines out of the reach of children.

General information about the safe and effective use of sapropterin dihydrochloride tablets.

Medicines are sometimes prescribed for purposes other than those listed in a Patient Information leaflet. Do not use sapropterin dihydrochloride tablets for a condition for which it was not prescribed. Do not give sapropterin dihydrochloride tablets to other people, even if they have the same symptoms you have. It may harm them. You can ask your pharmacist or doctor for information about sapropterin dihydrochloride tablets that is written for health professionals. For more information, go to www.endo.com or call Endo at 1-800-828-9393.

What are the ingredients in Sapropterin Dihydrochloride Tablets?

Active ingredient: sapropterin dihydrochloride.

Inactive ingredients: ascorbic acid, colloidal silicon dioxide, copovidone, crospovidone, dibasic calcium phosphate anhydrous, mannitol, riboflavin and sodium stearyl fumarate.

This Patient Information has been approved by the U.S. Food and Drug Administration.

INSTRUCTIONS FOR USE

Sapropterin Dihydrochloride Tablets

(SAP-roe-TER-in dye-HYE-droe-KLOR-ide)

Read this Instructions for Use before you start taking sapropterin dihydrochloride

tablets and each time you refill your prescription. There may be new information. This information does not take the place of talking with your healthcare provider about your treatment. Talk to your doctor if you have any questions about the right dose of sapropterin dihydrochloride tablets to take or how to mix it.

Important information:

- Sapropterin dihydrochloride comes as a tablet.
- Take sapropterin dihydrochloride tablets exactly as your doctor tells you. Your doctor should tell you how much sapropterin dihydrochloride to take and when to take it.
- Your doctor may change your dose of sapropterin dihydrochloride tablets depending on how you respond to treatment.
- Take sapropterin dihydrochloride tablets 1 time each day with a meal. It is best to take sapropterin dihydrochloride tablets at the same time each day.

Instructions for taking sapropterin dihydrochloride tablets:

Sapropterin dihydrochloride tablets can be swallowed whole or dissolved in water or apple juice. You may also crush the tablets and mix in a small amount of soft food, such as apple sauce or pudding.

To dissolve sapropterin dihydrochloride tablets:

- Mix sapropterin dihydrochloride tablets in 4 ounces to 8 ounces (1/2 cup to 1 cup) of water or apple juice. It may take a few minutes for the tablets to dissolve. To make the tablets dissolve faster, you can stir or crush them.
- The tablets may not dissolve completely. You may see small pieces floating on top of the water or apple juice. This is normal and safe for you to swallow.
- Drink within 15 minutes.
- After drinking your medicine, if you still see small pieces of the tablet, add more water or apple juice and drink to make sure that you take all of your medicine.

How should I store sapropterin dihydrochloride tablets?

- Store sapropterin dihydrochloride tablets at room temperature between 68° to 77°F (20° to 25°C).
- Keep sapropterin dihydrochloride tablets in the original bottle with the cap closed tightly.
- Protect from moisture.

Keep sapropterin dihydrochloride tablets and all medicines out of the reach of children.

This Instructions for Use has been approved by the U.S. Food and Drug Administration.

All brand names listed are the registered trademarks of their respective owners and are not trademarks of Endo.

Manufactured for:
Endo USA
Malvern, PA 19355 U.S.A.
Made in India

Neutral Code: TN/DRUGS/TN00002121
©2024 Endo, Inc. or one of its affiliates.

OS720-01-74-02
Revised: 07/2024

PACKAGE LABEL PRINCIPAL DISPLAY PANEL

Sapropterin Dihydrochloride Tablets, 100 mg - 30 Tablets - Container Label


NDC 49884-720-08

Sapropterin Dihydrochloride Tablets

100 mg

Rx only

120 Tablets



Each tablet contains:
100 mg of sapropterin dihydrochloride equivalent to 76.8 mg of sapropterin.

Usual Dosage:
See Physician Package Insert.

KEEP THIS AND ALL DRUGS OUT OF THE REACH OF CHILDREN.

Keep container tightly closed. Protect from moisture.


Store at 20° to 25°C (68° to 77°F); excursions allowed between 15° to 30°C (59° to 86°F) [See USP Controlled Room Temperature]

LA720-08-74-02
R07/24

Manufactured for:
Endo USA
Malvern, PA 19355 U.S.A.

Made in India

Neutral Code: TN/DRUGS/TN00002121



SAPROPTERIN DIHYDROCHLORIDE

sapropterin dihydrochloride tablet

Product Information

Product Type	HUMAN PRESCRIPTION DRUG	Item Code (Source)	NDC:49884-720
Route of Administration	ORAL		

Active Ingredient/Active Moiety

Ingredient Name	Basis of Strength	Strength
SAPROPTERIN DIHYDROCHLORIDE (UNII: RG277LF5B3) (SAPROPTERIN - UNII:EGX657432I)	SAPROPTERIN DIHYDROCHLORIDE	100 mg

Inactive Ingredients

Ingredient Name	Strength
ASCORBIC ACID (UNII: PQ6CK8PD0R)	
SILICON DIOXIDE (UNII: ETJ7Z6XBU4)	
COPOVIDONE K25-31 (UNII: D9C330MD8B)	
CROSPVIDONE (UNII: 2S7830E561)	
ANHYDROUS DIBASIC CALCIUM PHOSPHATE (UNII: L11K75P92J)	
MANNITOL (UNII: 3OWL53L36A)	
RIBOFLAVIN (UNII: TLM2976OFR)	
SODIUM STEARYL FUMARATE (UNII: 7CV7WJK4UI)	

Product Characteristics

Color	yellow (off-white to light yellow)	Score	no score
Shape	ROUND	Size	10mm
Flavor		Imprint Code	P;720
Contains			

Packaging

#	Item Code	Package Description	Marketing Start Date	Marketing End Date
1	NDC:49884-720-08	120 in 1 BOTTLE; Type 0: Not a Combination Product	10/01/2020	

Marketing Information

Marketing Category	Application Number or Monograph Citation	Marketing Start Date	Marketing End Date
ANDA	ANDA207200	10/01/2020	

Labeler - ENDO USA, Inc. (119185057)**Establishment**

Name	Address	ID/FEI	Business Operations
Par Formulations Private Limited		676159161	analysis(49884-720) , manufacture(49884-720) , pack(49884-720)

Revised: 3/2020

ENDO USA, Inc.