

**EVE LOM RADIANCE LIFT FOUNDATION SPF 15- titanium dioxide and octinoxate cream**  
**Space Brands Limited**

*Disclaimer: Most OTC drugs are not reviewed and approved by FDA, however they may be marketed if they comply with applicable regulations and policies. FDA has not evaluated whether this product complies.*

-----

**Eve Lom® Radiance Lift Foundation SPF 15**

***Drug Facts***

<b><i>Active Ingredients</i></b>	<b><i>Purpose</i></b>
Octinoxate 5%	Sunscreen
Titanium Dioxide 4.6%	Sunscreen

**Uses**

- helps prevent sunburn
- if used as directed with other sun protection measure (see **Directions**), decreases the risk of skin cancer and early skin aging caused by the sun

**Warnings**

**For external use only**

**Do not use** on damaged or broken skin

**When using this product** keep out of eyes. Rinse with water to remove.

**Stop use and ask a doctor if** rash occurs.

**Keep out of reach of children.** If swallowed, get medical help or contact a Poison Control Center right away.

**Directions**

- apply liberally 15 minutes before sun exposure
- children under 6 months of age: Ask a doctor
- reapply at least every 2 hours
- use a water-resistant sunscreen if swimming or sweating
- **Sun Protection Measures.** Spending time in the sun increases your risk of skin cancer and early skin aging. To decrease this risk, regularly use a sunscreen with a broad spectrum SPF of 15 or higher and other sun protection measures including:
  - limit time in the sun, especially from 10 a.m. – 2 p.m.
  - wear long-sleeve shirts, pants, hats, and sunglasses

**Inactive ingredients**

water, dimethicone, isododecane, mica, isononyl isononanoate, trisiloxane, caprylic/capric triglyceride, cetearyl ethylhexanoate, glycerin, synthetic fluorophlogopite, sorbitan isostearate, disteardimonium hectorite, cetyl PEG/PPG-10/1 dimethicone, dimethicone crosspolymer, butylene glycol, synthetic beeswax, tetrasodium EDTA, phenoxyethanol, sodium chloride, alcohol, silica dimethyl silylate, caprylyl methicone, aluminum hydroxide, stearic acid, PEG-30 dipolyhydroxystearate, potassium sorbate, spilanthes acmella flower extract, talc, rosa multiflora flower wax, tocopherol, ascorbyl palmitate, rubus idaeus leaf cell culture, pentaerythrityl tetra-di-t-butyl hydroxyhydrocinnamate.

May contain: titanium dioxide, iron oxides, zinc oxide.

**Other information**

- protect this product from excessive heat and direct sun

**PRINCIPAL DISPLAY PANEL - 30 mL Bottle Carton - Ginger 13**

EVE  
LOM®

RADIANCE LIFT  
**FOUNDATION**  
BROAD SPECTRUM SPF 15  
**SUNSCREEN**  
**GINGER 13**  
30ml 1 FL. OZ. e

EVE  
LOM®

**Drug Facts**

Active Ingredients	Purpose
Octinoxate 5%	Sunscreen
Titanium Dioxide 4.6%	Sunscreen

**Uses**

- helps prevent sunburn
- if used as directed with other sun protection measures (see **Directions**), decreases the risk of skin cancer and early skin aging caused by the sun

**Warnings**

For external use only

Do not use on damaged or broken skin

When using this product keep out of eyes. Rinse with water to remove.

Stop use and ask a doctor if rash occurs

Keep out of reach of children.

If swallowed, get medical help or contact a Poison Control Center right away.

**Directions**

- apply liberally 15 minutes before sun exposure
- children under 6 months of age: Ask a doctor
- reapply at least every 2 hours
- use a water-resistant sunscreen if swimming or sweating
- **Sun Protection Measures.** Spending time in the sun increases your risk of skin cancer and early skin aging. To decrease this risk, regularly use a sunscreen with a broad spectrum SPF of 15 or higher and other sun protection measures including:
  - limit time in the sun, especially from 10 a.m. – 2 p.m.
  - wear long-sleeve shirts, pants, hats, and sunglasses

**Inactive ingredients**

water, dimethicone, isododecane, mica, isononyl isononanoate, trisiloxane, caprylic/capric triglyceride, cetearyl ethylhexanoate, glycerin, synthetic fluorophlogopite, sorbitan isostearate, disteardimonium hectorite, cetyl PEG/PPG-10/1 dimethicone, dimethicone crosspolymer, butylene glycol, synthetic beeswax, tetrasodium EDTA, phenoxyethanol, sodium chloride, alcohol, silica dimethyl silylate, caprylyl methicone, aluminum hydroxide, stearic acid, PEG-30 dipolyhydroxystearate, potassium sorbate, spilanthus acmella flower extract, talc, rosa multiflora flower wax, tocopherol, ascorbyl palmitate, rubus idaeus leaf cell culture, pentaerythrityl tetra-di-t-butyl hydroxyhydrocinnamate. May contain: titanium dioxide, iron oxides, zinc oxide.

**Other information**

- protect this product from excessive heat and direct sun

EVE  
LOM®

EVE  
LOM®

EVE  
LOM®

EVE LOM RADIANCE LIFT FOUNDATION BROAD SPECTRUM SUNSCREEN SPF 15 AN ACTIVELY AGE-DEFYING FOUNDATION THAT HELPS TO LIFT AND FIRM THE SKIN WITH A WEIGHTLESS, MOISTURISING SILKY VEIL. BERRYFLUXVITA, A POWERFUL ANTIOXIDANT FROM RASPBERRY STEM CELL TECHNOLOGY, PROTECTS AND IMPROVES SKIN HYDRATION. PARACRESS FLOWER EXTRACT, COMBINED WITH ROSE FLOWER WAX, VITAMIN E AND C IMPROVE SKIN'S FIRMNESS AND RESTORES SKIN'S DENSITY FOR A SMOOTH, LIFTED COMPLEXION WITH YOUTHFUL RADIANCE, WHILST PROTECTING AGAINST UVA AND UVB RAYS.

LIFT RADIANCE FOND DE TEINT SPF 15 UN FOND DE TEINT ACTIF ANTI-ÂGE POUR LIFTER ET RAFFERMIR LA PEAU D'UN VOILE HYDRATANT LÉGER. LE BERRYFLUXVITA, UN PUISSANT ANTI-OXYDANT À BASE DE CELLULES SOUCHES DE FRAMBOISE, PROTÈGE LA PEAU ET AMÉLIORE SON HYDRATATION. L'EXTRAIT DE BRÈDE MAFANE RAFFERMIT LA PEAU ET RESTAURE SA DENSITÉ, LUI DONNANT UN ÉCLAT LISSE DE JEUNESSE. LES RIDES SONT ATTÉNUÉES, LE TEINT SUBIME ET L'ÉLASTICITÉ DE LA PEAU RETROUVÉE ET LE SPF 15 LA PROTÈGE DES RAYONS UVA ET UVB.

EVE LOM RADIANCE LIFT BASE SPF 15 UNA BASE ACTIVA ANTIEDAD QUE ALISA Y AFIRMA LA PIEL CON UN LIGERO VELO HIDRATANTE. EL BERRYFLUXVITA™, UN POTENTE ANTI-OXIDANTE A BASE DE CELULAS MADRE DE FRAMBUESA, PROTEGE LA PIEL Y MEJORA SU HIDRATACION. EL EXTRACTO DE BREDE MAFANE REAFIRMA LA PIEL Y RESTAURA SU DENSIDAD, DANDOLE UN ASPECTO RESPIANDECIENTE DE JUVENTUD GRACIAS A SU EFECTO ALISANTE Y LIFTING, A LA VEZ QUE PROTEGE CONTRA LOS RAYOS UVA Y UVB.

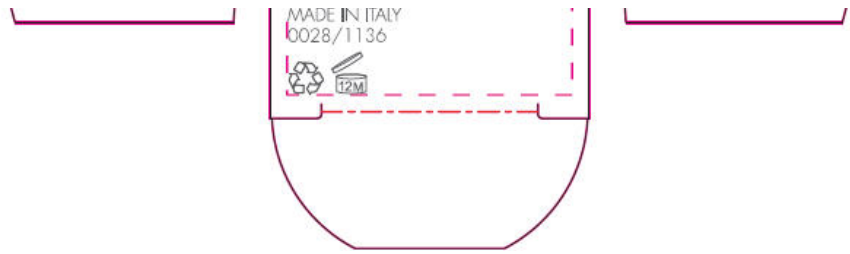
RADIANCE LIFT FOUNDATION  
BROAD SPECTRUM SPF 15  
SUNSCREEN

RADIANCE LIFT  
FOUNDATION  
BROAD SPECTRUM SPF 15  
SUNSCREEN  
GINGER 13  
30ml 1 FL. OZ. e

5050013000233

WWW.EVELOM.COM  
DIST. SPACE BRANDS LTD.  
LONDON WC1E 6JA

C872025



**PRINCIPAL DISPLAY PANEL - 30 mL Bottle Carton - Blush 14**

EVE  
LOM®

RADIANCE LIFT  
**FOUNDATION**  
BROAD SPECTRUM SPF 15  
**SUNSCREEN**  
**BLUSH 14**  
30ml 1 FL. OZ. e

EVE  
LOM®

### Drug Facts

#### Active Ingredients Purpose

Octinoxate 5% Sunscreen  
Titanium Dioxide 4,6% Sunscreen

#### Uses

- helps prevent sunburn
- if used as directed with other sun protection measures (see **Directions**), decreases the risk of skin cancer and early skin aging caused by the sun

#### Warnings

For external use only

Do not use on damaged or broken skin.

When using this product keep out of eyes. Rinse with water to remove.

Stop use and ask a doctor if rash occurs

Keep out of reach of children.

If swallowed, get medical help or contact a Poison Control Center right away.

#### Directions

- apply liberally 15 minutes before sun exposure
- children under 6 months of age: Ask a doctor
- reapply at least every 2 hours
- use a water-resistant sunscreen if swimming or sweating
- **Sun Protection Measures.** Spending time in the sun increases your risk of skin cancer and early skin aging. To decrease this risk, regularly use a sunscreen with a broad spectrum SPF of 15 or higher and other sun protection measures including:
  - limit time in the sun, especially from 10 a.m. – 2 p.m.
  - wear long-sleeve shirts, pants, hats, and sunglasses

#### Inactive ingredients

water, dimethicone, isododecane, mica, isononyl isononanoate, trisiloxane, caprylic/capric triglyceride, cetearyl ethylhexanoate, glycerin, synthetic fluorphlogopite, sorbitan isostearate, disteardimonium hectorite, cetyl PEG/PPG-10/1 dimethicone, dimethicone crosspolymer, butylene glycol, synthetic beeswax, tetrasodium EDTA, phenoxyethanol, sodium chloride, alcohol, silica dimethyl silylate, caprylyl methicone, aluminum hydroxide, stearic acid, PEG-30 dipolyhydroxystearate, potassium sorbate, spilanthes acmella flower extract, talc, rosa multiflora flower wax, tocopherol, ascorbyl palmitate, rubus idaeus leaf cell culture, pentaerythrityl tetra-di-t-butyl hydroxyhydrocinnamate. May contain: titanium dioxide, iron oxides, zinc oxide.

#### Other information

- protect this product from excessive heat and direct sun

EVE  
LOM®

EVE  
LOM®

EVE  
LOM®

EVE LOM RADIANCE LIFT FOUNDATION BROAD SPECTRUM SUNSCREEN SPF 15 AN ACTIVELY AGE-DEFYING FOUNDATION THAT HELPS TO LIFT AND FIRM THE SKIN WITH A WEIGHTLESS, MOISTURISING SILKY VEIL. BERRYFLUXVITA, A POWERFUL ANTIOXIDANT FROM RASPBERRY STEM CELL TECHNOLOGY, PROTECTS AND IMPROVES SKIN HYDRATION. PARACRESS FLOWER EXTRACT, COMBINED WITH ROSE FLOWER WAX, VITAMIN E AND C IMPROVE SKIN'S FIRMNESS AND RESTORES SKIN'S DENSITY FOR A SMOOTH, LIFTED COMPLEXION WITH YOUTHFUL RADIANCE, WHILE PROTECTING AGAINST UVA AND UVB RAYS.

LIFT RADIANCE FOND DE TEINT SPF 15 UN FOND DE TEINT ACTIF ANTI-ÂGE POUR LIFTER ET RAFFERMIR LA PEAU D'UNE VOILE HYDRATANT LÉGER. LE BERRYFLUXVITA, UN PUISSANT ANTIOXYDANT À BASE DE CELLULES SOUCHES DE FRAMBOISE, PROTÈGE LA PEAU ET AMÉLIORE SON HYDRATATION. L'EXTRAIT DE BRÈDE MAFANE RAFFERMIT LA PEAU ET RESTAURE SA DENSITÉ, LUI DONNANT UN ÉCLAT LISSE DE JEUNESSE. LES RIDES SONT ATTENUÉES, LE TEINT SUBLIME ET L'ÉLASTICITÉ DE LA PEAU RETROUVÉE ET LE SPF 15 LA PROTÈGE DES RAYONS UVA ET UVB.

EVE LOM RADIANCE LIFT BASE SPF 15 UNA BASE ACTIVA ANTI-EDAD QUE ALISA Y AFIRMA LA PIEL CON UN LIGERO VELO HIDRATANTE. EL BERRYFLUXVITA™, UN POTENTE ANTIOXIDANTE A BASE DE CÉLULAS MADRE DE FRAMBUESA, PROTEGE LA PIEL Y MEJORA SU HIDRATACION. EL EXTRACTO DE BREDE MAFANE REAFIRMA LA PIEL Y RESTAURA SU DENSIDAD, DANDO LE UN ASPECTO RESPLANDECIENTE DE JUVENTUD GRACIAS A SU EFECTO ALISANTE Y LIFTING, A LA VEZ QUE PROTEGE CONTRA LOS RAYOS UVA Y UVB.

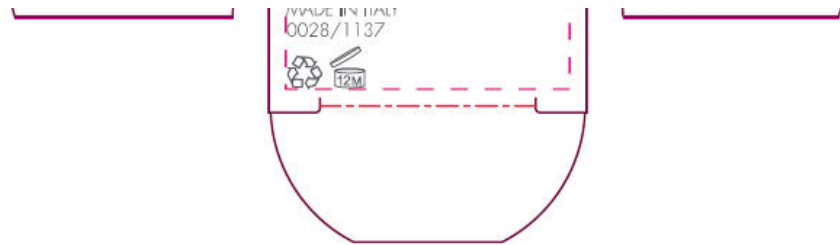
RADIANCE LIFT FOUNDATION  
BROAD SPECTRUM SPF 15  
SUNSCREEN

RADIANCE LIFT  
FOUNDATION  
BROAD SPECTRUM SPF 15  
SUNSCREEN  
BLUSH 14  
30ml 1 FL. OZ. e

5050013000240

WWW.EVELOM.COM  
DIST. SPACE BRANDS LTD.  
LONDON WC1E 6JA  
MADE IN ITALY

C872026



**PRINCIPAL DISPLAY PANEL - 30 mL Bottle Carton - Sienna 15**

EVE

LOM®

RADIANCE LIFT

**FOUNDATION**

BROAD SPECTRUM SPF 15

**SUNSCREEN**

**SIENNA 15**

30ml 1 FL. OZ. e

EVE  
LOM®

**Drug Facts**

Active Ingredients	Purpose
Octinoxate 5%	Sunscreen
Titanium Dioxide 4.6%	Sunscreen

**Uses**

- helps prevent sunburn
- if used as directed with other sun protection measures (see **Directions**), decreases the risk of skin cancer and early skin aging caused by the sun

**Warnings**

For external use only

Do not use on damaged or broken skin

When using this product keep out of eyes. Rinse with water to remove.

Stop use and ask a doctor if rash occurs

Keep out of reach of children.

If swallowed, get medical help or contact a Poison Control Center right away.

**Directions**

- apply liberally 15 minutes before sun exposure
- children under 6 months of age: Ask a doctor
- reapply at least every 2 hours
- use a water-resistant sunscreen if swimming or sweating
- **Sun Protection Measures.** Spending time in the sun increases your risk of skin cancer and early skin aging. To decrease this risk, regularly use a sunscreen with a broad spectrum SPF of 15 or higher and other sun protection measures including:
  - limit time in the sun, especially from 10 a.m. – 2 p.m.
  - wear long-sleeve shirts, pants, hats, and sunglasses

**Inactive ingredients**

water, dimethicone, isododecane, mica, isononyl isononanoate, trisiloxane, caprylic/capric triglyceride, cetearyl ethylhexanoate, glycerin, synthetic fluorphlogopite, sorbitan isostearate, disteardimonium hectorite, cetyl PEG/PPG-10/1 dimethicone, dimethicone crosspolymer, butylene glycol, synthetic beeswax, tetrasodium EDTA, phenoxyethanol, sodium chloride, alcohol, silica dimethyl silylate, caprylyl methicone, aluminum hydroxide, stearic acid, PEG-30 dipolyhydroxystearate, potassium sorbate, spilanthes acmella flower extract, talc, rosa multiflora flower wax, tocopherol, ascorbyl palmitate, rubus idaeus leaf cell culture, pentaerythrityl tetra-di-t-butyl hydroxyhydrocinnamate. May contain: titanium dioxide, iron oxides, zinc oxide.

**Other information**

- protect this product from excessive heat and direct sun

EVE  
LOM®

EVE  
LOM®

EVE  
LOM®

EVE LOM RADIANCE LIFT FOUNDATION BROAD SPECTRUM SUNSCREEN SPF 15 AN ACTIVELY AGE-DEFYING FOUNDATION THAT HELPS TO LIFT AND FIRM THE SKIN WITH A WEIGHTLESS, MOISTURISING SILKY VEIL. BERRYFLUXVITA, A POWERFUL ANTIOXIDANT FROM RASPBERRY STEM CELL TECHNOLOGY, PROTECTS AND IMPROVES SKIN HYDRATION. PARACRESS FLOWER EXTRACT, COMBINED WITH ROSE FLOWER WAX, VITAMIN E AND C IMPROVE SKIN'S FIRMNESS AND RESTORES SKIN'S DENSITY FOR A SMOOTH, LIFTED COMPLEXION WITH YOUTHFUL RADIANCE, WHILST PROTECTING AGAINST UVA AND UVB RAYS.

LIFT RADIANCE FOND DE TEINT SPF 15 UN FOND DE TEINT ACTIF ANTI-ÂGE POUR LIFTER ET RAFFERMIR LA PEAU D'UN VOILE HYDRATANT LÉGER. LE BERRYFLUXVITA, UN PUISSANT ANTI-OXYDANT À BASE DE CELLULES SOUCHES DE FRAMBOISE, PROTÈGE LA PEAU ET AMÉLIORE SON HYDRATATION. L'EXTRAIT DE BRÈDE MAFANE RAFFERMIT LA PEAU ET RESTAURE SA DENSITÉ. IL LI DOMINANT UN ÉCLAT LISSE DE JEUNESSE. LES RIDES SONT ATTENUÉES. LE TEINT SUBLIME ET L'ÉLASTICITÉ DE LA PEAU RETROUVÉE ET LE SPF 15 LA PROTÈGE DES RAYONS UVA ET UVB.

EVE LOM RADIANCE LIFT BASE SPF 15 UNA BASE ACTIVA ANTI-EDAD QUE ALISA Y AFIRMA LA PIEL CON UN LIGERO VELO HIDRATANTE. EL BERRYFLUXVITA™, UN POTENTE ANTI-OXIDANTE A BASE DE CELULAS MADRE DE FRAMBUESA, PROTEGE LA PIEL Y MEJORA SU HIDRATACION. EL EXTRACTO DE BREDE MAFANE REAFIRMA LA PIEL Y RESTAURA SU DENSIDAD, DANDOLE UN ASPECTO RESPLANDECIENTE DE JUVENTUD GRACIAS A SU EFECTO ALISANTE Y LIFTING. A LA VEZ QUE PROTEGE CONTRA LOS RAYOS UVA Y UVB.

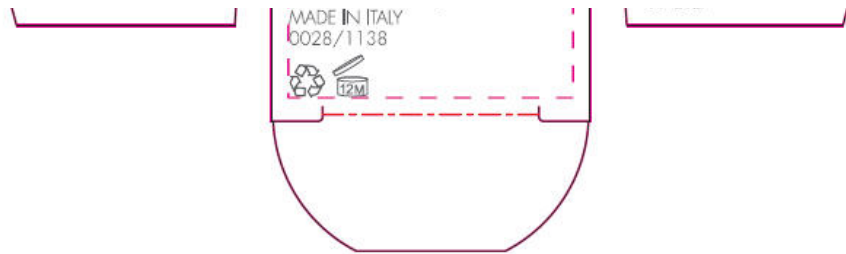
RADIANCE LIFT FOUNDATION  
BROAD SPECTRUM SPF 15  
SUNSCREEN

RADIANCE LIFT  
FOUNDATION  
BROAD SPECTRUM SPF 15  
SUNSCREEN  
SIENNA 15  
30ml 1 FL. OZ. e

5050013000257

WWW.EVELOM.COM  
DIST. SPACE BRANDS LTD.  
LONDON WC1E 6JA

C872027



**PRINCIPAL DISPLAY PANEL - 30 mL Bottle Carton - Ivory 2**

EVE  
LOM®

RADIANCE LIFT  
**FOUNDATION**  
BROAD SPECTRUM SPF 15  
**SUNSCREEN**  
**IVORY 2**  
30ml 1 FL. OZ. e



EVE  
LOM®

**Drug Facts**

Active Ingredients	Purpose
Octinoxate 5%	Sunscreen
Titanium Dioxide 4.6%	Sunscreen

**Uses**

- helps prevent sunburn
- if used as directed with other sun protection measures (see **Directions**), decreases the risk of skin cancer and early skin aging caused by the sun

**Warnings**

For external use only

Do not use on damaged or broken skin

When using this product keep out of eyes. Rinse with water to remove.

Stop use and ask a doctor if rash occurs

Keep out of reach of children.

If swallowed, get medical help or contact a Poison Control Center right away.

**Directions**

- apply liberally 15 minutes before sun exposure
- children under 6 months of age: Ask a doctor
- reapply at least every 2 hours
- use a water-resistant sunscreen if swimming or sweating
- **Sun Protection Measures.** Spending time in the sun increases your risk of skin cancer and early skin aging. To decrease this risk, regularly use a sunscreen with a broad spectrum SPF of 15 or higher and other sun protection measures including:
  - limit time in the sun, especially from 10 a.m. – 2 p.m.
  - wear long-sleeve shirts, pants, hats, and sunglasses

**Inactive ingredients**

water, dimethicone, isododecane, mica, isononyl isononanoate, trisiloxane, caprylic/capric triglyceride, cetearyl ethylhexanoate, glycerin, synthetic fluorophlogopite, sorbitan isostearate, disteardimonium hectorite, cetyl PEG/PPG-10/1 dimethicone, dimethicone crosspolymer, butylene glycol, synthetic beeswax, tetrasodium EDTA, phenoxyethanol, sodium chloride, alcohol, silica dimethyl silylate, caprylyl methicone, aluminum hydroxide, stearic acid, PEG-30 dipolyhydroxystearate, potassium sorbate, spilanthes acmella flower extract, talc, rosa multiflora flower wax, tocopherol, ascorbyl palmitate, rubus idaeus leaf cell culture, pentaerythrityl tetra-di-t-butyl hydroxyhydrocinnamate. May contain: titanium dioxide, iron oxides, zinc oxide.

**Other information**

- protect this product from excessive heat and direct sun

EVE  
LOM®

EVE  
LOM®

EVE  
LOM®

EVE LOM RADIANCE LIFT FOUNDATION BROAD SPECTRUM SUNSCREEN SPF 15 AN ACTIVELY AGE-DEFYING FOUNDATION THAT HELPS TO LIFT AND FIRM THE SKIN WITH A WEIGHTLESS, MOISTURISING SILKY VEIL. BERRYFLUXVITA, A POWERFUL ANTIOXIDANT FROM RASPBERRY STEM CELL TECHNOLOGY, PROTECTS AND IMPROVES SKIN HYDRATION. PARACRESS FLOWER EXTRACT, COMBINED WITH ROSE FLOWER WAX, VITAMIN E AND C IMPROVE SKIN'S FIRMNESS AND RESTORES SKIN'S DENSITY FOR A SMOOTH, LIFTED COMPLEXION WITH YOUTHFUL RADIANCE, WHILST PROTECTING AGAINST UVA AND UVB RAYS.

LIFT RADIANCE FOND DE TEINT SPF 15 UN FOND DE TEINT ACTIF ANTI-ÂGE POUR LIFTER ET RAFFERMIR LA PEAU D'UN VOILE HYDRATANT LÉGER. LE BERRYFLUXVITA, UN PUISSANT ANTI-OXYDANT À BASE DE CELLULES SOUGHES DE FRAMBOISE, PROTÈGE LA PEAU ET AMÉLIORE SON HYDRATATION. L'EXTRAIT DE BRÈDE MAFANE RAFFERMIT LA PEAU ET RESTAURE SA DENSITÉ, LUI DONNANT UN ÉCLAT LISSE DE JEUNESSE. LES RIDES SONT ATTÉNUÉES, LE TEINT SUBIMÉ ET L'ÉLASTICITÉ DE LA PEAU RETROUVÉE ET LE SPF 15 LA PROTÈGE DES RAYONS UVA ET UVB.

EVE LOM RADIANCE LIFT BASE SPF 15 UNA BASE ACTIVA ANTI-EDAD QUE ALISA Y AFIRMA LA PIEL CON UN LIGERO VELO HIDRATANTE. EL BERRYFLUXVITA™, UN POTENTE ANTI-OXIDANTE A BASE DE CELULAS MADRE DE FRAMBUESA, PROTEGE LA PIEL Y MEJORA SU HIDRATACION. EL EXTRACTO DE BREDE MAFANE REAFIRMA LA PIEL Y RESTAURA SU DENSIDAD, DANDO LE UN ASPECTO RESPLANDECIENTE DE JUVENTUD GRACIAS A SU EFECTO ALISANTE Y LIFTING, A LA VEZ QUE PROTEGE CONTRA LOS RAYOS UVA Y UVB.

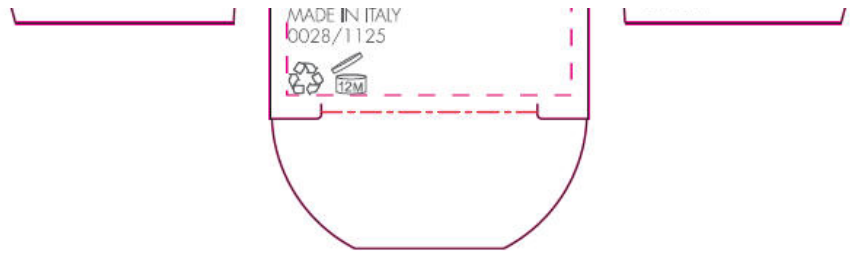
RADIANCE LIFT FOUNDATION  
BROAD SPECTRUM SPF 15  
SUNSCREEN

RADIANCE LIFT  
FOUNDATION  
BROAD SPECTRUM SPF 15  
SUNSCREEN  
IVORY 2  
30ml 1 FL. OZ. e

5050013000127

WWW.EVELOM.COM  
DIST. SPACE BRANDS LTD.  
LONDON WC1E 6JA

C872014



**PRINCIPAL DISPLAY PANEL - 30 mL Bottle Carton - Beige 7**

EVE  
LOM®

RADIANCE LIFT  
**FOUNDATION**  
BROAD SPECTRUM SPF 15  
**SUNSCREEN**  
**BEIGE 7**  
30ml 1 FL. OZ. e

EVE  
LOM®

### Drug Facts

Active Ingredients	Purpose
Octinoxate 5%	Sunscreen
Titanium Dioxide 4.6%	Sunscreen

#### Uses

- helps prevent sunburn
- if used as directed with other sun protection measures (see **Directions**), decreases the risk of skin cancer and early skin aging caused by the sun

#### Warnings

For external use only

Do not use on damaged or broken skin.

When using this product keep out of eyes. Rinse with water to remove.

Stop use and ask a doctor if rash occurs

Keep out of reach of children.

If swallowed, get medical help or contact a Poison Control Center right away.

#### Directions

- apply liberally 15 minutes before sun exposure
- children under 6 months of age: Ask a doctor
- reapply at least every 2 hours
- use a water-resistant sunscreen if swimming or sweating
- **Sun Protection Measures.** Spending time in the sun increases your risk of skin cancer and early skin aging. To decrease this risk, regularly use a sunscreen with a broad spectrum SPF of 15 or higher and other sun protection measures including:
  - limit time in the sun, especially from 10 a.m. – 2 p.m.
  - wear long-sleeve shirts, pants, hats, and sunglasses

#### Inactive ingredients

water, dimethicone, isododecane, mica, isononyl isononanoate, trisiloxane, caprylic/capric triglyceride, cetearyl ethylhexanoate, glycerin, synthetic fluorphlogopite, sorbitan isostearate, disteardimonium hectorite, cetyl PEG/PPG-10/1 dimethicone, dimethicone crosspolymer, butylene glycol, synthetic beeswax, tetrasodium EDTA, phenoxyethanol, sodium chloride, alcohol, silica dimethyl silylate, caprylyl methicone, aluminum hydroxide, stearic acid, PEG-30 dipolyhydroxystearate, potassium sorbate, spilanthus acmella flower extract, talc, rosa multiflora flower wax, tocopherol, ascorbyl palmitate, rubus idaeus leaf cell culture, pentaerythrityl tetra-*n*-butyl hydroxyhydrocinnamate. May contain: titanium dioxide, iron oxides, zinc oxide.

#### Other information

- protect this product from excessive heat and direct sun

EVE  
LOM®

EVE  
LOM®

EVE  
LOM®

EVE LOM RADIANCE LIFT FOUNDATION BROAD SPECTRUM SUNSCREEN SPF 15 AN ACTIVELY AGE-DEFYING FOUNDATION THAT HELPS TO LIFT AND FIRM THE SKIN WITH A WEIGHTLESS, MOISTURISING SILKY VEIL. BERRYFLUXVITA, A POWERFUL ANTIOXIDANT FROM RASPBERRY STEM CELL TECHNOLOGY, PROTECTS AND IMPROVES SKIN HYDRATION. PARACRESS FLOWER EXTRACT, COMBINED WITH ROSE FLOWER WAX, VITAMIN E AND C IMPROVE SKIN'S FIRMNESS AND RESTORES SKIN'S DENSITY FOR A SMOOTH, LIFTED COMPLEXION WITH YOUTHFUL RADIANCE, WHILST PROTECTING AGAINST UVA AND UVB RAYS.

LIFT RADIANCE FOND DE TEINT SPF 15 UN FOND DE TEINT ACTIF ANTI-ÂGE POUR LIFTER ET RAFFERMIR LA PEAU D'UN VOILE HYDRATANT LÉGER. LE BERRYFLUXVITA, UN PUISSANT ANTI-OXYDANT À BASE DE CELLULES SOUCHES DE FRAMBOISE, PROTÈGE LA PEAU ET AMÉLIORE SON HYDRATATION. L'EXTRAIT DE BRÈDE MAFANE RAFFERMIT LA PEAU ET RESTAURE SA DENSITÉ, LUI DONNANT UN ÉCLAT LISSE DE JEUNESSE. LES RIDES SONT ATTÉNUÉES, LE TEINT SUBLIME ET L'ÉLASTICITÉ DE LA PEAU RETROUVÉE ET LE SPF 15 LA PROTÈGE DES RAYONS UVA ET UVB.

EVE LOM RADIANCE LIFT BASE SPF 15 UNA BASE ACTIVA ANTI-EDAD QUE ALISA Y AFIRMA LA PIEL CON UN LIGERO VELO HIDRATANTE. EL BERRYFLUXVITA™, UN POTENTE ANTI-OXIDANTE A BASE DE CELULAS MADRE DE FRAMBUESA, PROTEGE LA PIEL Y MEJORA SU HIDRATACION. EL EXTRACTO DE BREDE MAFANE REAFIRMA LA PIEL Y RESTAURA SU DENSIDAD, DANDO LE UN ASPECTO RESPLANDECIENTE DE JUVENTUD GRACIAS A SU EFECTO ALISANTE Y LIFTING, A LA VEZ QUE PROTEGE CONTRA LOS RAYOS UVA Y UVB.

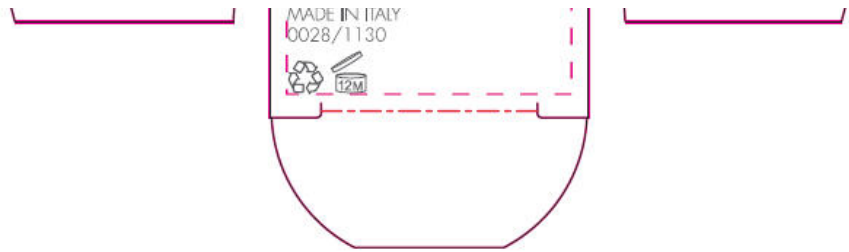
RADIANCE LIFT  
FOUNDATION  
BROAD SPECTRUM SPF 15  
SUNSCREEN  
BEIGE 7  
30ml 1 FL. OZ. e

RADIANCE LIFT FOUNDATION  
BROAD SPECTRUM SPF 15  
SUNSCREEN

5050013000172

WWW.EVELOM.COM  
DIST. SPACE BRANDS LTD.  
LONDON WC1E 6JA

CB72019



**PRINCIPAL DISPLAY PANEL - 30 mL Bottle Carton - Bamboo 10**

EVE  
LOM®

RADIANCE LIFT  
**FOUNDATION**  
BROAD SPECTRUM SPF 15  
**SUNSCREEN**  
**BAMBOO 10**  
30ml 1 FL. OZ. e

EVE  
LOM®

### Drug Facts

Active Ingredients	Purpose
Octinoxate 5%	Sunscreen
Titanium Dioxide 4.6%	Sunscreen

#### Uses

- helps prevent sunburn
- if used as directed with other sun protection measures (see **Directions**), decreases the risk of skin cancer and early skin aging caused by the sun

#### Warnings

For external use only

Do not use on damaged or broken skin

When using this product keep out of eyes. Rinse with water to remove.

Stop use and ask a doctor if rash occurs.

Keep out of reach of children.

If swallowed, get medical help or contact a Poison Control Center right away.

#### Directions

- apply liberally 15 minutes before sun exposure
- children under 6 months of age: Ask a doctor
- reapply at least every 2 hours
- use a water-resistant sunscreen if swimming or sweating
- **Sun Protection Measures.** Spending time in the sun increases your risk of skin cancer and early skin aging. To decrease this risk, regularly use a sunscreen with a broad spectrum SPF of 15 or higher and other sun protection measures including:
  - limit time in the sun, especially from 10 a.m. – 2 p.m.
  - wear long-sleeve shirts, pants, hats, and sunglasses

#### Inactive ingredients

water, dimethicone, isododecane, mica, isononyl isononanoate, trisiloxane, caprylic/capric triglyceride, cetearyl ethylhexanoate, glycerin, synthetic fluorophlogopite, sorbitan isostearate, disteardimonium hectorite, cetyl PEG/PPG-10/1 dimethicone, dimethicone crosspolymer, butylene glycol, synthetic beeswax, tetrasodium EDTA, phenoxyethanol, sodium chloride, alcohol, silica dimethyl silylate, caprylyl methicone, aluminum hydroxide, stearic acid, PEG-30 dipolyhydroxystearate, potassium sorbate, spilanthes acmella flower extract, talc, rosa multiflora flower wax, tocopherol, ascorbyl palmitate, rubus idaeus leaf cell culture, pentaerythrityl tetra-di-t-butyl hydroxyhydrocinnamate, May contain: titanium dioxide, iron oxides, zinc oxide.

#### Other information

- protect this product from excessive heat and direct sun

EVE  
LOM®

EVE  
LOM®

EVE  
LOM®

EVE LOM RADIANCE LIFT FOUNDATION BROAD SPECTRUM SUNSCREEN SPF 15 AN ACTIVELY AGE-DEFYING FOUNDATION THAT HELPS TO LIFT AND FIRM THE SKIN WITH A WEIGHTLESS, MOISTURISING SILKY VEIL. BERRYFLUMVITA, A POWERFUL ANTIOXIDANT FROM RASPBERRY STEM CELL TECHNOLOGY, PROTECTS AND IMPROVES SKIN HYDRATION. PARACRESS FLOWER EXTRACT, COMBINED WITH ROSE FLOWER WAX, VITAMIN E AND C IMPROVE SKIN'S FIRMNESS AND RESTORES SKIN'S DENSITY FOR A SMOOTH, LIFTED COMPLEXION WITH YOUTHFUL RADIANCE, WHILST PROTECTING AGAINST UVA AND UVB RAYS.

LIFT RADIANCE FOND DE TEINT SPF 15 UN FOND DE TEINT ACTIF ANTI-ÂGE POUR LIFTER ET RAFFERMIR LA PEAU D'UN VOILE HYDRATANT LÉGER. LE BERRYFLUMVITA, UN PUISSANT ANTIOXYDANT À BASE DE CELLULES SOUCHES DE FRAMBOISE, PROTÈGE LA PEAU ET AMÉLIORE SON HYDRATATION. L'EXTRAIT DE BRÈDE MAFANE RAFFERMIT LA PEAU ET RESTAURE SA DENSITÉ, LUI DONNANT UN ÉCLAT LISSE DE JEUNESSE. LES RIDES SONT ATTÉNUÉES, LE TEINT SUBIME ET L'ÉLASTICITÉ DE LA PEAU RETROUVÉE ET LE SPF 15 LA PROTÈGE DES RAYONS UVA ET UVB.

EVE LOM RADIANCE LIFT BASE SPF 15 UNA BASE ACTIVA ANTIEDAD QUE ALISA Y AFIRMA LA PIEL CON UN LIGERO VELO HIDRATANTE. EL BERRYFLUMVITA™, UN POTENTE ANTIOXIDANTE A BASE DE CELULAS MADRE DE FRAMBUESA, PROTEGE LA PIEL Y MEJORA SU HIDRATACION. EL EXTRACTO DE BREDE MAFANE REAFIRMA LA PIEL Y RESTAURA SU DENSIDAD, DANDOLE UN ASPECTO RESPIANDECIENTE DE JUVENTUD GRACIAS A SU EFECTO ALISANTE Y LIFTING. A LA VEZ QUE PROTEGE CONTRA LOS RAYOS UVA Y UVB.

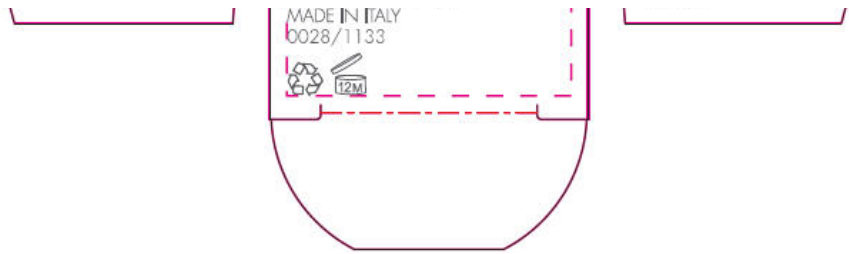
RADIANCE LIFT FOUNDATION  
BROAD SPECTRUM SPF 15  
SUNSCREEN

RADIANCE LIFT  
FOUNDATION  
BROAD SPECTRUM SPF 15  
SUNSCREEN  
BAMBOO 10  
30ml 1 FL. OZ. e

5050013000202

WWW.EVELOM.COM  
DIST. SPACE BRANDS LTD.  
LONDON WC1E 6JA

C872022



**PRINCIPAL DISPLAY PANEL - 30 mL Bottle Carton - Alabaster 1**

EVE  
LOM®

RADIANCE LIFT

**FOUNDATION**

BROAD SPECTRUM SPF 15

**SUNSCREEN**

**ALABASTER 1**

30ml 1 FL. OZ. e

EVE  
LOM®

**Drug Facts**

Active Ingredients	Purpose
Octinoxate 5%	Sunscreen
Titanium Dioxide 4.6%	Sunscreen

**Uses**

- helps prevent sunburn
- If used as directed with other sun protection measures (see **Directions**), decreases the risk of skin cancer and early skin aging caused by the sun

**Warnings**

For external use only

Do not use on damaged or broken skin

When using this product keep out of eyes. Rinse with water to remove.

Stop use and ask a doctor if rash occurs

Keep out of reach of children.

If swallowed, get medical help or contact a Poison Control Center right away.

**Directions**

- apply liberally 15 minutes before sun exposure
- children under 6 months of age: Ask a doctor
- reapply at least every 2 hours
- use a water-resistant sunscreen if swimming or sweating
- **Sun Protection Measures.** Spending time in the sun increases your risk of skin cancer and early skin aging. To decrease this risk, regularly use a sunscreen with a broad spectrum SPF of 15 or higher and other sun protection measures including:
  - limit time in the sun, especially from 10 a.m. – 2 p.m.
  - wear long-sleeve shirts, pants, hats, and sunglasses

**Inactive ingredients**

water, dimethicone, isododecane, mica, isononyl isononanoate, trisiloxane, caprylic/capric triglyceride, cetearyl ethylhexanoate, glycerin, synthetic fluorphlogopite, sorbitan isostearate, disteardimonium hectorite, cetyl PEG/PPG-10/1 dimethicone, dimethicone crosspolymer, butylene glycol, synthetic beeswax, tetrasodium EDTA, phenoxyethanol, sodium chloride, alcohol, silica dimethyl silylate, caprylyl methicone, aluminum hydroxide, stearic acid, PEG-30 dipolyhydroxystearate, potassium sorbate, spilanthes acmella flower extract, talc, rosa multiflora flower wax, tocopherol, ascorbyl palmitate, rubus idaeus leaf cell culture, pentaerythrityl tetra-di-t-butyl hydroxyhydrocinnamate. May contain: titanium dioxide, iron oxides, zinc oxide.

**Other information**

- protect this product from excessive heat and direct sun

EVE  
LOM®

EVE  
LOM®

EVE  
LOM®

EVE LOM RADIANCE LIFT FOUNDATION BROAD SPECTRUM SUNSCREEN SPF 15 AN ACTIVELY AGE-DEFYING FOUNDATION THAT HELPS TO LIFT AND FIRM THE SKIN WITH A WEIGHTLESS, MOISTURISING SILKY VEIL. BERRYFLUXVITA, A POWERFUL ANTIOXIDANT FROM RASPBERRY STEM CELL TECHNOLOGY, PROTECTS AND IMPROVES SKIN HYDRATION. PARACRESS FLOWER EXTRACT, COMBINED WITH ROSE FLOWER WAX, VITAMIN E AND C IMPROVE SKIN'S FIRMNESS AND RESTORES SKIN'S DENSITY FOR A SMOOTH, LIFTED COMPLEXION WITH YOUTHFUL RADIANCE, WHILST PROTECTING AGAINST UVA AND UVB RAYS.

LIFT RADIANCE FOND DE TEINT SPF 15 UN FOND DE TEINT ACTIF ANTI-ÂGE POUR LIFTER ET RAFFERMIR LA PEAU D'UN VOILE HYDRATANT LÉGER. LE BERRYFLUXVITA, UN PUISSANT ANTIOXYDANT À BASE DE CELLULES SOUCHES DE FRAMBOISE, PROTÈGE LA PEAU ET AMÉLIORE SON HYDRATATION. L'EXTRAIT DE BRÈDE MAFANE RAFFERMIT LA PEAU ET RESTAURE SA DENSITÉ, LUI DONNANT UN ÉCLAT LISSE DE JEUNESSE. LES RIDES SONT ATTÉNUÉES, LE TEINT SUBIMÉ ET L'ÉLASTICITÉ DE LA PEAU RETROUVÉE ET LE SPF 15 LA PROTÈGE DES RAYONS UVA ET UVB.

EVE LOM RADIANCE LIFT BASE SPF 15 UNA BASE ACTIVA ANTIEDAD QUE ALISA Y AFIRMA LA PIEL CON UN LIGERO VELO HIDRATANTE. EL BERRYFLUXVITA™, UN POTENTE ANTIOXIDANTE A BASE DE CELULAS MADRE DE FRAMBUESA, PROTEGE LA PIEL Y MEJORA SU HIDRATACION. EL EXTRACTO DE BREDE MAFANE REAFIRMA LA PIEL Y RESTAURA SU DENSIDAD, DANDOLE UN ASPECTO RESPLANDECIENTE DE JUVENTUD GRACIAS A SU EFECTO ALISANTE Y LIFTING, A LA VEZ QUE PROTEGE CONTRA LOS RAYOS UVA Y UVB.

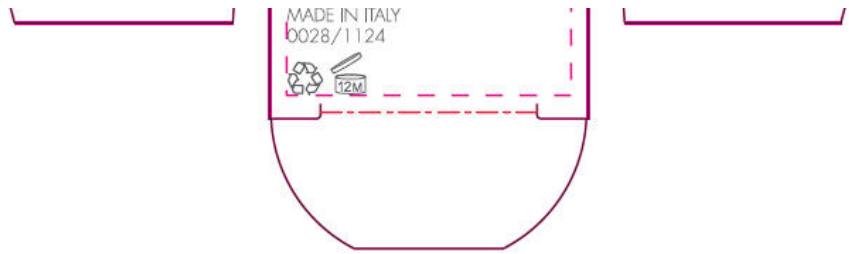
RADIANCE LIFT FOUNDATION  
BROAD SPECTRUM SPF 15  
SUNSCREEN

RADIANCE LIFT  
FOUNDATION  
BROAD SPECTRUM SPF 15  
SUNSCREEN  
ALABASTER 1  
30ml 1 FL. OZ. e

5050013000110

WWW.EVELOM.COM  
DIST. SPACE BRANDS LTD.  
LONDON WC1E 6JA

C872013



**PRINCIPAL DISPLAY PANEL - 30 mL Bottle Carton - Cream 6**

EVE  
LOM®

RADIANCE LIFT  
**FOUNDATION**  
BROAD SPECTRUM SPF 15  
**SUNSCREEN**  
**CREAM 6**  
30ml 1 FL. OZ. e



EVE  
LOM®

**Drug Facts**

Active Ingredients	Purpose
Octinoxate 5%	Sunscreen
Titanium Dioxide 4.6%	Sunscreen

**Uses**

- helps prevent sunburn
- if used as directed with other sun protection measures (see **Directions**), decreases the risk of skin cancer and early skin aging caused by the sun

**Warnings**

For external use only

Do not use on damaged or broken skin

When using this product keep out of eyes. Rinse with water to remove.

Stop use and ask a doctor if rash occurs

Keep out of reach of children.

If swallowed, get medical help or contact a Poison Control Center right away.

**Directions**

- apply liberally 15 minutes before sun exposure
- children under 6 months of age: Ask a doctor
- reapply at least every 2 hours
- use a water-resistant sunscreen if swimming or sweating
- **Sun Protection Measures.** Spending time in the sun increases your risk of skin cancer and early skin aging. To decrease this risk, regularly use a sunscreen with a broad spectrum SPF of 15 or higher and other sun protection measures including:
  - limit time in the sun, especially from 10 a.m. – 2 p.m.
  - wear long-sleeve shirts, pants, hats, and sunglasses

**Inactive ingredients**

water, dimethicone, isododecane, mica, isononyl isononanoate, trisiloxane, caprylic/capric triglyceride, cetearyl ethylhexanoate, glycerin, synthetic fluorophlogopite, sorbitan isostearate, disteardimonium hectorite, cetyl PEG/PPG-10/1 dimethicone, dimethicone crosspolymer, butylene glycol, synthetic beeswax, tetrasodium EDTA, phenoxyethanol, sodium chloride, alcohol, silica dimethyl silylate, caprylyl methicone, aluminum hydroxide, stearic acid, PEG-30 dipolyhydroxystearate, potassium sorbate, spilanthus acmella flower extract, talc, rosa multiflora flower wax, tocopherol, ascorbyl palmitate, rubus idaeus leaf cell culture, pentaerythrityl tetra-di-t-butyl hydroxyhydrocinnamate. May contain: titanium dioxide, iron oxides, zinc oxide.

**Other information**

- protect this product from excessive heat and direct sun

EVE  
LOM®

EVE  
LOM®

EVE  
LOM®

EVE LOM RADIANCE LIFT FOUNDATION BROAD SPECTRUM SUNSCREEN SPF 15 AN ACTIVELY AGE-DEFYING FOUNDATION THAT HELPS TO LIFT AND FIRM THE SKIN WITH A WEIGHTLESS, MOISTURISING SILKY VEIL. BERRYFLUXITA, A POWERFUL ANTIOXIDANT FROM RASPBERRY STEM CELL TECHNOLOGY, PROTECTS AND IMPROVES SKIN HYDRATION. PARACRESS FLOWER EXTRACT, COMBINED WITH ROSE FLOWER WAX, VITAMIN E AND C IMPROVE SKIN'S FIRMNESS AND RESTORES SKIN'S DENSITY FOR A SMOOTH, LIFTED COMPLEXION WITH YOUTHFUL RADIANCE, WHILST PROTECTING AGAINST UVA AND UVB RAYS.

LIFT RADIANCE FOND DE TEINT SPF 15 UN FOND DE TEINT ACTIF ANTI-ÂGE POUR LIFTER ET RAFFERMIR LA PEAU D'UN VOILE HYDRATANT LÉGER. LE BERRYFLUXITA, UN PUISSANT ANTI-OXYDANT À BASE DE CELLULES SOUCHES DE FRAMBOISE, PROTÈGE LA PEAU ET AMÉLIORE SON HYDRATATION. L'EXTRAIT DE BRÈDE MAFANE RAFFERMIT LA PEAU ET RESTAURE SA DENSITÉ, LUI DONNANT UN ÉCLAT LISSE DE JEUNESSE. LES RIDES SONT ATTÉNUÉES, LE TEINT SUBIMÉ ET L'ÉLASTICITÉ DE LA PEAU RETROUVÉE ET LE SPF 15 LA PROTÈGE DES RAYONS UVA ET UVB.

EVE LOM RADIANCE LIFT BASE SPF 15 UNA BASE ACTIVA ANTI-EDAD QUE ALISA Y AFIRMA LA PIEL CON UN LIGERO VELO HIDRATANTE. EL BERRYFLUXITA™, UN POTENTE ANTI-OXIDANTE A BASE DE CELULAS MADRE DE FRAMBUESA, PROTEGE LA PIEL Y MEJORA SU HIDRATACION. EL EXTRACTO DE BREDE MAFANE REAFIRMA LA PIEL Y RESTAURA SU DENSIDAD, DANDO LE UN ASPECTO RESPLANDECIENTE DE JUVENTUD GRACIAS A SU EFECTO ALISANTE Y LIFTING. A LA VEZ QUE PROTEGE CONTRA LOS RAYOS UVA Y UVB.

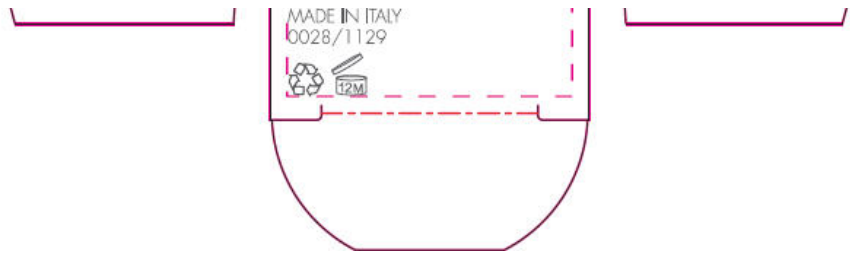
RADIANCE LIFT FOUNDATION  
BROAD SPECTRUM SPF 15  
SUNSCREEN

RADIANCE LIFT  
FOUNDATION  
BROAD SPECTRUM SPF 15  
SUNSCREEN  
CREAM 6  
30ml 1 FL. OZ. e

5050013000165

WWW.EVELOM.COM  
DIST. SPACE BRANDS LTD.  
LONDON WC1E 6JA

C872018



**PRINCIPAL DISPLAY PANEL - 30 mL Bottle Carton - Honey 12**

EVE  
LOM®

RADIANCE LIFT  
**FOUNDATION**  
BROAD SPECTRUM SPF 15  
**SUNSCREEN**  
**HONEY 12**  
30ml 1 FL. OZ. e

EVE  
LOM®

### Drug Facts

Active Ingredients	Purpose
Octinoxate 5%	Sunscreen
Titanium Dioxide 4.6%	Sunscreen

#### Uses

- helps prevent sunburn
- if used as directed with other sun protection measures (see **Directions**), decreases the risk of skin cancer and early skin aging caused by the sun

#### Warnings

For external use only

Do not use on damaged or broken skin.

When using this product keep out of eyes. Rinse with water to remove.

Stop use and ask a doctor if rash occurs

Keep out of reach of children.

If swallowed, get medical help or contact a Poison Control Center right away.

#### Directions

- apply liberally 15 minutes before sun exposure
- children under 6 months of age: Ask a doctor
- reapply at least every 2 hours
- use a water-resistant sunscreen if swimming or sweating
- **Sun Protection Measures.** Spending time in the sun increases your risk of skin cancer and early skin aging. To decrease this risk, regularly use a sunscreen with a broad spectrum SPF of 15 or higher and other sun protection measures including:
  - limit time in the sun, especially from 10 a.m. – 2 p.m.
  - wear long-sleeve shirts, pants, hats, and sunglasses

#### Inactive ingredients

water, dimethicone, isododecane, mica, isononyl isononanoate, trisiloxane, caprylic/capric triglyceride, cetearyl ethylhexanoate, glycerin, synthetic fluorophlogopite, sorbitan isostearate, disteardimonium hectorite, cetyl PEG/PPG-10/1 dimethicone, dimethicone crosspolymer, butylene glycol, synthetic beeswax, tetrasodium EDTA, phenoxyethanol, sodium chloride, alcohol, silica dimethyl silylate, caprylyl methicone, aluminum hydroxide, stearic acid, PEG-30 dipolyhydroxystearate, potassium sorbate, spilanthus acnella flower extract, talc, rosa multiflora flower wax, tocopherol, ascorbyl palmitate, rubus idaeus leaf cell culture, pentaerythrityl tetra-*n*-butyl hydroxyhydrocinnamate. May contain: titanium dioxide, iron oxides, zinc oxide.

#### Other information

- protect this product from excessive heat and direct sun.

EVE  
LOM®

EVE  
LOM®

EVE  
LOM®

EVE LOM RADIANCE LIFT FOUNDATION BROAD SPECTRUM SUNSCREEN SPF 15 AN ACTIVELY AGE-DEFYING FOUNDATION THAT HELPS TO LIFT AND FIRM THE SKIN WITH A WEIGHTLESS, MOISTURISING SILKY VEIL. BERRYFLUXVITA, A POWERFUL ANTIOXIDANT FROM RASPBERRY STEM CELL TECHNOLOGY, PROTECTS AND IMPROVES SKIN HYDRATION. PARACRESS FLOWER EXTRACT, COMBINED WITH ROSE FLOWER WAX, VITAMIN E AND C IMPROVE SKIN'S FIRMNESS AND RESTORES SKIN'S DENSITY FOR A SMOOTH, LIFTED COMPLEXION WITH YOUTHFUL RADIANCE, WHILST PROTECTING AGAINST UVA AND UVB RAYS.

LIFT RADIANCE FOND DE TEINT SPF 15 UN FOND DE TEINT ACTIF ANTI-ÂGE POUR LIFTER ET RAFFERMIR LA PEAU D'UN VOILE HYDRATANT LÉGER. LE BERRYFLUXVITA, UN PUISSANT ANTI-OXYDANT À BASE DE CELLULES SOUCHES DE FRAMBOISE, PROTÈGE LA PEAU ET AMÉLIORE SON HYDRATATION. L'EXTRAIT DE BRÈDE MAFANE RAFFERMIT LA PEAU ET RESTAURE SA DENSITÉ, LUI DONNANT UN ÉCLAT LISSE DE JEUNESSE. LES RIDES SONT ATTÉNUÉES, LE TEINT SUBLIME ET L'ÉLASTICITÉ DE LA PEAU RETROUVÉE ET LE SPF 15 LA PROTÈGE DES RAYONS UVA ET UVB.

EVE LOM RADIANCE LIFT BASE SPF 15 UNA BASE ACTIVA ANTIEDAD QUE ALISA Y AFIRMA LA PIEL CON UN LIGERO VELO HIDRATANTE. EL BERRYFLUXVITA™, UN POTENTE ANTI-OXIDANTE A BASE DE CELULAS MADRE DE FRAMBUESA, PROTEGE LA PIEL Y MEJORA SU HIDRATACION. EL EXTRACTO DE BREDE MAFANE REAFIRMA LA PIEL Y RESTAURA SU DENSIDAD, DANDO LE UN ASPECTO RESPLANDECIENTE DE JUVENTUD GRACIAS A SU EFECTO ALISANTE Y LIFTING, A LA VEZ QUE PROTEGE CONTRA LOS RAYOS UVA Y UVB.

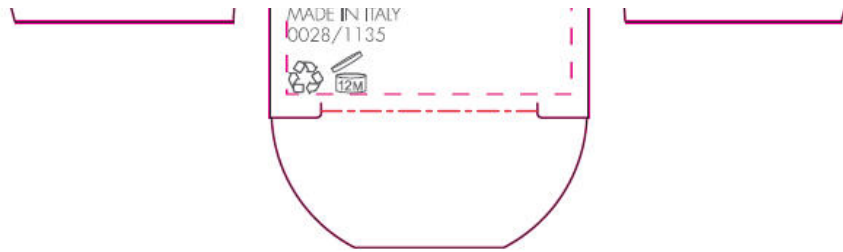
RADIANCE LIFT  
FOUNDATION  
BROAD SPECTRUM SPF 15  
SUNSCREEN  
HONEY 12  
30ml 1 FL. OZ. e

RADIANCE LIFT FOUNDATION  
BROAD SPECTRUM SPF 15  
SUNSCREEN

5050013000226

WWW.EVELOM.COM  
DIST. SPACE BRANDS LTD.  
LONDON WC1E 6JA

C872024



## EVE LOM RADIANCE LIFT FOUNDATION SPF 15

titanium dioxide and octinoxate cream

### Product Information

<b>Product Type</b>	HUMAN OTC DRUG	<b>Item Code (Source)</b>	NDC:61601-1136
<b>Route of Administration</b>	TOPICAL		

### Active Ingredient/Active Moiety

Ingredient Name	Basis of Strength	Strength
<b>Titanium Dioxide</b> (UNII: 15FIX9V2JP) (Titanium Dioxide - UNII:15FIX9V2JP)	Titanium Dioxide	1.38 g in 30 mL
<b>Octinoxate</b> (UNII: 4Y5P7MUD51) (Octinoxate - UNII:4Y5P7MUD51)	Octinoxate	1.5 g in 30 mL

### Inactive Ingredients

Ingredient Name	Strength
<b>Water</b> (UNII: 059QF0KO0R)	
<b>Dimethicone</b> (UNII: 92RU3N3Y1O)	
<b>Isododecane</b> (UNII: A8289P68Y2)	
<b>Mica</b> (UNII: V8A1AW0880)	
<b>Isononyl Isononanoate</b> (UNII: S4V5BS6GCX)	
<b>Trisiloxane</b> (UNII: 9G1ZW13R0G)	
<b>Ferric Oxide Yellow</b> (UNII: EX438O2MRT)	
<b>Medium-Chain Triglycerides</b> (UNII: C9H2L21V7U)	
<b>Cetearyl Ethylhexanoate</b> (UNII: 9M64UO4C25)	
<b>Glycerin</b> (UNII: PDC6A3C0OX)	
<b>Sorbitan Isostearate</b> (UNII: 01S2G2C1E4)	
<b>Disteardimonium Hectorite</b> (UNII: X687XDK09L)	
<b>Cetyl PEG/PPG-10/1 Dimethicone (HLB 3)</b> (UNII: G300307ZXP)	
<b>Butylene Glycol</b> (UNII: 3XUS85K0RA)	
<b>Edetate Sodium</b> (UNII: MP1J8420LU)	
<b>Ferric Oxide Red</b> (UNII: 1K09F3G675)	
<b>Phenoxyethanol</b> (UNII: HIE492ZZ3T)	
<b>Sodium Chloride</b> (UNII: 451W47IQ8X)	
<b>Alcohol</b> (UNII: 3K9958V90M)	
<b>Zinc Oxide</b> (UNII: SOI2LOH54Z)	
<b>Silica Dimethyl Silylate</b> (UNII: EU2PSP0G0W)	
<b>Aluminum Hydroxide</b> (UNII: 5QB0T2IUN0)	
<b>Stearic Acid</b> (UNII: 4ELV7Z65AP)	
<b>Caprylyl Trisiloxane</b> (UNII: Q95M2P1KJL)	

<b>PEG-30 Dipolyhydroxystearate</b> (UNII: 9713Q0S7FO)	
<b>Ferrosoferric Oxide</b> (UNII: XM0M87F357)	
<b>Potassium Sorbate</b> (UNII: 1VPU26JZZ4)	
<b>Talc</b> (UNII: 7SEV7J4R1U)	
<b>Acmella Oleracea Flower</b> (UNII: 2794N5KM0K)	
<b>Rosa Multiflora Flower Wax</b> (UNII: VU148CEP2J)	
<b>Tocopherol</b> (UNII: R0ZB2556P8)	
<b>Ascorbyl Palmitate</b> (UNII: QN83US2B0N)	
<b>Pentaerythritol Tetrakis(3-(3,5-Di-Tert-Butyl-4-Hydroxyphenyl)Propionate)</b> (UNII: 255PIF62MS)	

### Product Characteristics

<b>Color</b>	BROWN (Ginger)	<b>Score</b>	
<b>Shape</b>		<b>Size</b>	
<b>Flavor</b>		<b>Imprint Code</b>	
<b>Contains</b>			

### Packaging

#	Item Code	Package Description	Marketing Start Date	Marketing End Date
1	NDC:61601-1136-6	1 in 1 CARTON		
1		30 mL in 1 BOTTLE, PUMP		

### Marketing Information

Marketing Category	Application Number or Monograph Citation	Marketing Start Date	Marketing End Date
OTC MONOGRAPH NOT FINAL	part352	02/28/2014	

## EVE LOM RADIANCE LIFT FOUNDATION SPF 15

titanium dioxide and octinoxate cream

### Product Information

<b>Product Type</b>	HUMAN OTC DRUG	<b>Item Code (Source)</b>	NDC:61601-1137
<b>Route of Administration</b>	TOPICAL		

### Active Ingredient/Active Moiety

Ingredient Name	Basis of Strength	Strength
<b>Titanium Dioxide</b> (UNII: 15FIX9V2JP) (Titanium Dioxide - UNII:15FIX9V2JP)	Titanium Dioxide	1.38 g in 30 mL
<b>Octinoxate</b> (UNII: 4Y5P7MUD51) (Octinoxate - UNII:4Y5P7MUD51)	Octinoxate	1.5 g in 30 mL

### Inactive Ingredients

Ingredient Name	Strength
<b>Water</b> (UNII: 059QF0KO0R)	
<b>Dimethicone</b> (UNII: 92RU3N3Y1O)	

<b>Isododecane</b> (UNII: A8289P68Y2)
<b>Mica</b> (UNII: V8A1AW0880)
<b>Isononyl Isononanoate</b> (UNII: S4V5BS6GCX)
<b>Trisiloxane</b> (UNII: 9G1ZW13R0G)
<b>Ferric Oxide Yellow</b> (UNII: EX438O2MRT)
<b>Medium-Chain Triglycerides</b> (UNII: C9H2L21V7U)
<b>Cetearyl Ethylhexanoate</b> (UNII: 9M64UO4C25)
<b>Glycerin</b> (UNII: PDC6A3C0OX)
<b>Sorbitan Isostearate</b> (UNII: 01S2G2C1E4)
<b>Disteardimonium Hectorite</b> (UNII: X687XDK09L)
<b>Cetyl PEG/PPG-10/1 Dimethicone (HLB 3)</b> (UNII: G300307ZXP)
<b>Butylene Glycol</b> (UNII: 3XUS85K0RA)
<b>Edetate Sodium</b> (UNII: MP1J8420LU)
<b>Ferric Oxide Red</b> (UNII: 1K09F3G675)
<b>Phenoxyethanol</b> (UNII: HIE492ZZ3T)
<b>Sodium Chloride</b> (UNII: 451W47IQ8X)
<b>Alcohol</b> (UNII: 3K9958V90M)
<b>Zinc Oxide</b> (UNII: SOI2LOH54Z)
<b>Silica Dimethyl Silylate</b> (UNII: EU2PSP0G0W)
<b>Aluminum Hydroxide</b> (UNII: 5QB0T2IUN0)
<b>Stearic Acid</b> (UNII: 4ELV7Z65AP)
<b>Caprylyl Trisiloxane</b> (UNII: Q95M2P1KJL)
<b>PEG-30 Dipolyhydroxystearate</b> (UNII: 9713Q0S7FO)
<b>Ferrosoferric Oxide</b> (UNII: XM0M87F357)
<b>Potassium Sorbate</b> (UNII: 1VPU26JZZ4)
<b>Talc</b> (UNII: 7SEV7J4R1U)
<b>Acmella Oleracea Flower</b> (UNII: 2794N5KM0K)
<b>Rosa Multiflora Flower Wax</b> (UNII: VU148CEP2J)
<b>Tocopherol</b> (UNII: R0ZB2556P8)
<b>Ascorbyl Palmitate</b> (UNII: QN83US2B0N)
<b>Pentaerythritol Tetraakis(3-(3,5-Di-Tert-Butyl-4-Hydroxyphenyl)Propionate)</b> (UNII: 255PIF62MS)

### Product Characteristics

<b>Color</b>	RED (Blush)	<b>Score</b>	
<b>Shape</b>		<b>Size</b>	
<b>Flavor</b>		<b>Imprint Code</b>	
<b>Contains</b>			

### Packaging

#	Item Code	Package Description	Marketing Start Date	Marketing End Date
1	NDC:61601-1137-5	1 in 1 CARTON		
1		30 mL in 1 BOTTLE, PUMP		

### Marketing Information

Marketing Category	Application Number or Monograph Citation	Marketing Start Date	Marketing End Date
OTC MONOGRAPH NOT FINAL	part352	02/28/2014	

# EVE LOM RADIANCE LIFT FOUNDATION SPF 15

titanium dioxide and octinoxate cream

## Product Information

<b>Product Type</b>	HUMAN OTC DRUG	<b>Item Code (Source)</b>	NDC:61601-1138
<b>Route of Administration</b>	TOPICAL		

## Active Ingredient/Active Moiety

<b>Ingredient Name</b>	<b>Basis of Strength</b>	<b>Strength</b>
<b>Titanium Dioxide</b> (UNII: 15FIX9V2JP) (Titanium Dioxide - UNII:15FIX9V2JP)	Titanium Dioxide	1.38 g in 30 mL
<b>Octinoxate</b> (UNII: 4Y5P7MUD51) (Octinoxate - UNII:4Y5P7MUD51)	Octinoxate	1.5 g in 30 mL

## Inactive Ingredients

<b>Ingredient Name</b>	<b>Strength</b>
<b>Water</b> (UNII: 059QF0KO0R)	
<b>Dimethicone</b> (UNII: 92RU3N3Y1O)	
<b>Isododecane</b> (UNII: A8289P68Y2)	
<b>Mica</b> (UNII: V8A1AW0880)	
<b>Isononyl Isononanoate</b> (UNII: S4V5BS6GCX)	
<b>Trisiloxane</b> (UNII: 9G1ZW13R0G)	
<b>Ferric Oxide Yellow</b> (UNII: EX438O2MRT)	
<b>Medium-Chain Triglycerides</b> (UNII: C9H2L21V7U)	
<b>Cetearyl Ethylhexanoate</b> (UNII: 9M64UO4C25)	
<b>Glycerin</b> (UNII: PDC6A3C0OX)	
<b>Sorbitan Isostearate</b> (UNII: 01S2G2C1E4)	
<b>Disteardimonium Hectorite</b> (UNII: X687XDK09L)	
<b>Cetyl PEG/PPG-10/1 Dimethicone (HLB 3)</b> (UNII: G300307ZXP)	
<b>Butylene Glycol</b> (UNII: 3XUS85K0RA)	
<b>Edetate Sodium</b> (UNII: MP1J8420LU)	
<b>Ferric Oxide Red</b> (UNII: 1K09F3G675)	
<b>Phenoxyethanol</b> (UNII: HIE492ZZ3T)	
<b>Sodium Chloride</b> (UNII: 451W47IQ8X)	
<b>Alcohol</b> (UNII: 3K9958V90M)	
<b>Zinc Oxide</b> (UNII: SOI2LOH54Z)	
<b>Silica Dimethyl Silylate</b> (UNII: EU2PSP0G0W)	
<b>Aluminum Hydroxide</b> (UNII: 5QB0T2IUN0)	
<b>Stearic Acid</b> (UNII: 4ELV7Z65AP)	
<b>Caprylyl Trisiloxane</b> (UNII: Q95M2P1KJL)	
<b>PEG-30 Dipolyhydroxystearate</b> (UNII: 9713Q0S7FO)	
<b>Ferrosoferric Oxide</b> (UNII: XM0M87F357)	
<b>Potassium Sorbate</b> (UNII: 1VPU26JZZ4)	
<b>Talc</b> (UNII: 7SEV7J4R1U)	
<b>Acmella Oleracea Flower</b> (UNII: 2794N5KM0K)	
<b>Rosa Multiflora Flower Wax</b> (UNII: VU148CEP2J)	

<b>Tocopherol</b> (UNII: R0ZB2556P8)	
<b>Ascorbyl Palmitate</b> (UNII: QN83US2B0N)	
<b>Pentaerythritol Tetrakis(3-(3,5-Di-Tert-Butyl-4-Hydroxyphenyl)Propionate)</b> (UNII: 255PIF62MS)	

Product Characteristics			
<b>Color</b>	RED (Sienna)	<b>Score</b>	
<b>Shape</b>		<b>Size</b>	
<b>Flavor</b>		<b>Imprint Code</b>	
<b>Contains</b>			

Packaging				
#	Item Code	Package Description	Marketing Start Date	Marketing End Date
1	NDC:61601-1138-3	1 in 1 CARTON		
1		30 mL in 1 BOTTLE, PUMP		

Marketing Information			
Marketing Category	Application Number or Monograph Citation	Marketing Start Date	Marketing End Date
OTC MONOGRAPH NOT FINAL	part352	02/28/2014	

## EVE LOM RADIANCE LIFT FOUNDATION SPF 15

titanium dioxide and octinoxate cream

Product Information			
<b>Product Type</b>	HUMAN OTC DRUG	<b>Item Code (Source)</b>	NDC:61601-1175
<b>Route of Administration</b>	TOPICAL		

Active Ingredient/Active Moiety		
Ingredient Name	Basis of Strength	Strength
<b>Titanium Dioxide</b> (UNII: 15FIX9V2JP) (Titanium Dioxide - UNII:15FIX9V2JP)	Titanium Dioxide	1.38 g in 30 mL
<b>Octinoxate</b> (UNII: 4Y5P7MUD51) (Octinoxate - UNII:4Y5P7MUD51)	Octinoxate	1.5 g in 30 mL

Inactive Ingredients	
Ingredient Name	Strength
<b>Water</b> (UNII: 059QF0KO0R)	
<b>Dimethicone</b> (UNII: 92RU3N3Y1O)	
<b>Isododecane</b> (UNII: A8289P68Y2)	
<b>Mica</b> (UNII: V8A1AW0880)	
<b>Isononyl Isononanoate</b> (UNII: S4V5BS6GCX)	
<b>Trisiloxane</b> (UNII: 9G1ZW13R0G)	
<b>Ferric Oxide Yellow</b> (UNII: EX438O2MRT)	
<b>Medium-Chain Triglycerides</b> (UNII: C9H2L21V7U)	



Cetearyl Ethylhexanoate (UNII: 9M64UO4C25)
Glycerin (UNII: PDC6A3C0OX)
Sorbitan Isostearate (UNII: 01S2G2C1E4)
Disteardimonium Hectorite (UNII: X687XDK09L)
Cetyl PEG/PPG-10/1 Dimethicone (HLB 3) (UNII: G300307ZXP)
Butylene Glycol (UNII: 3XUS85K0RA)
Edetate Sodium (UNII: MP1J8420LU)
Ferric Oxide Red (UNII: 1K09F3G675)
Phenoxyethanol (UNII: HIE492ZZ3T)
Sodium Chloride (UNII: 451W47IQ8X)
Alcohol (UNII: 3K9958V90M)
Zinc Oxide (UNII: SOI2LOH54Z)
Silica Dimethyl Silylate (UNII: EU2PSP0G0W)
Aluminum Hydroxide (UNII: 5QB0T2IUN0)
Stearic Acid (UNII: 4ELV7Z65AP)
Caprylyl Trisiloxane (UNII: Q95M2P1KJL)
PEG-30 Dipolyhydroxystearate (UNII: 9713Q0S7FO)
Ferrosulfuric Oxide (UNII: XM0M87F357)
Potassium Sorbate (UNII: 1VPU26JZZ4)
Talc (UNII: 7SEV7J4R1U)
Acmella Oleracea Flower (UNII: 2794N5KM0K)
Rosa Multiflora Flower Wax (UNII: VU148CEP2J)
Tocopherol (UNII: R0ZB2556P8)
Ascorbyl Palmitate (UNII: QN83US2B0N)
Pentaerythritol Tetrakis(3-(3,5-Di-Tert-Butyl-4-Hydroxyphenyl)Propionate) (UNII: 255PIF62MS)

Product Characteristics			
Color	WHITE (Ivory 2)	Score	
Shape		Size	
Flavor		Imprint Code	
Contains			

Packaging				
#	Item Code	Package Description	Marketing Start Date	Marketing End Date
1	NDC:61601-1175-5	1 in 1 CARTON		
1		2 mL in 1 BOTTLE, PUMP		

Marketing Information			
Marketing Category	Application Number or Monograph Citation	Marketing Start Date	Marketing End Date
OTC MONOGRAPH NOT FINAL	part352	02/28/2014	

**EVE LOM RADIANCE LIFT FOUNDATION SPF 15**  
titanium dioxide and octinoxate cream

**Product Information**

<b>Product Type</b>	HUMAN OTC DRUG	<b>Item Code (Source)</b>	NDC:61601-1176
<b>Route of Administration</b>	TOPICAL		

**Active Ingredient/Active Moiety**

<b>Ingredient Name</b>	<b>Basis of Strength</b>	<b>Strength</b>
<b>Titanium Dioxide</b> (UNII: 15FIX9V2JP) (Titanium Dioxide - UNII:15FIX9V2JP)	Titanium Dioxide	1.38 g in 30 mL
<b>Octinoxate</b> (UNII: 4Y5P7MUD51) (Octinoxate - UNII:4Y5P7MUD51)	Octinoxate	1.5 g in 30 mL

**Inactive Ingredients**

<b>Ingredient Name</b>	<b>Strength</b>
<b>Water</b> (UNII: 059QF0KO0R)	
<b>Dimethicone</b> (UNII: 92RU3N3Y1O)	
<b>Isododecane</b> (UNII: A8289P68Y2)	
<b>Mica</b> (UNII: V8A1AW0880)	
<b>Isononyl Isononanoate</b> (UNII: S4V5BS6GCX)	
<b>Trisiloxane</b> (UNII: 9G1ZW13R0G)	
<b>Ferric Oxide Yellow</b> (UNII: EX438O2MRT)	
<b>Medium-Chain Triglycerides</b> (UNII: C9H2L21V7U)	
<b>Cetearyl Ethylhexanoate</b> (UNII: 9M64UO4C25)	
<b>Glycerin</b> (UNII: PDC6A3C0OX)	
<b>Sorbitan Isostearate</b> (UNII: 01S2G2C1E4)	
<b>Disteardimonium Hectorite</b> (UNII: X687XDK09L)	
<b>Cetyl PEG/PPG-10/1 Dimethicone (HLB 3)</b> (UNII: G300307ZXP)	
<b>Butylene Glycol</b> (UNII: 3XUS85K0RA)	
<b>Edetate Sodium</b> (UNII: MP1J8420LU)	
<b>Ferric Oxide Red</b> (UNII: 1K09F3G675)	
<b>Phenoxyethanol</b> (UNII: HIE492ZZ3T)	
<b>Sodium Chloride</b> (UNII: 451W47IQ8X)	
<b>Alcohol</b> (UNII: 3K9958V90M)	
<b>Zinc Oxide</b> (UNII: SOI2LOH54Z)	
<b>Silica Dimethyl Silylate</b> (UNII: EU2PSP0G0W)	
<b>Aluminum Hydroxide</b> (UNII: 5QB0T2IUN0)	
<b>Stearic Acid</b> (UNII: 4ELV7Z65AP)	
<b>Caprylyl Trisiloxane</b> (UNII: Q95M2P1KJL)	
<b>PEG-30 Dipolyhydroxystearate</b> (UNII: 9713Q0S7FO)	
<b>Ferrosoferric Oxide</b> (UNII: XM0M87F357)	
<b>Potassium Sorbate</b> (UNII: 1VPU26JZZ4)	
<b>Talc</b> (UNII: 7SEV7J4R1U)	
<b>Acmella Oleracea Flower</b> (UNII: 2794N5KM0K)	
<b>Rosa Multiflora Flower Wax</b> (UNII: VU148CEP2J)	
<b>Tocopherol</b> (UNII: R0ZB2556P8)	
<b>Ascorbyl Palmitate</b> (UNII: QN83US2B0N)	
<b>Pentaerythritol Tetrakis(3-(3,5-Di-Tert-Butyl-4-Hydroxyphenyl)Propionate)</b> (UNII: 255PIF62MS)	

Product Characteristics				
Color	BROWN (Beige 7)		Score	
Shape			Size	
Flavor			Imprint Code	
Contains				
Packaging				
#	Item Code	Package Description	Marketing Start Date	Marketing End Date
1	NDC:61601-1176-1	1 in 1 CARTON		
1		2 mL in 1 BOTTLE, PUMP		
Marketing Information				
Marketing Category	Application Number or Monograph Citation	Marketing Start Date	Marketing End Date	
OTC MONOGRAPH NOT FINAL	part352	02/28/2014		

## EVE LOM RADIANCE LIFT FOUNDATION SPF 15

titanium dioxide and octinoxate cream

Product Information			
Product Type	HUMAN OTC DRUG	Item Code (Source)	NDC:61601-1177
Route of Administration	TOPICAL		

Active Ingredient/Active Moiety		
Ingredient Name	Basis of Strength	Strength
Titanium Dioxide (UNII: 15FIX9V2JP) (Titanium Dioxide - UNII:15FIX9V2JP)	Titanium Dioxide	1.38 g in 30 mL
Octinoxate (UNII: 4Y5P7MUD51) (Octinoxate - UNII:4Y5P7MUD51)	Octinoxate	1.5 g in 30 mL

Inactive Ingredients	
Ingredient Name	Strength
Water (UNII: 059QF0KO0R)	
Dimethicone (UNII: 92RU3N3Y1O)	
Isododecane (UNII: A8289P68Y2)	
Mica (UNII: V8A1AW0880)	
Isononyl Isononanoate (UNII: S4V5BS6GCX)	
Trisiloxane (UNII: 9G1ZW13R0G)	
Ferric Oxide Yellow (UNII: EX438O2MRT)	
Medium-Chain Triglycerides (UNII: C9H2L21V7U)	
Cetearyl Ethylhexanoate (UNII: 9M64UO4C25)	
Glycerin (UNII: PDC6A3C0OX)	
Sorbitan Isostearate (UNII: 01S2G2C1E4)	
Disteardimonium Hectorite (UNII: X687XDK09L)	
Cetyl PEG/PPG-10/1 Dimethicone (HLB 3) (UNII: G300307ZXP)	

<b>Butylene Glycol</b> (UNII: 3XUS85K0RA)	
<b>Edetate Sodium</b> (UNII: MP1J8420LU)	
<b>Ferric Oxide Red</b> (UNII: 1K09F3G675)	
<b>Phenoxyethanol</b> (UNII: HIE492ZZ3T)	
<b>Sodium Chloride</b> (UNII: 451W47IQ8X)	
<b>Alcohol</b> (UNII: 3K9958V90M)	
<b>Zinc Oxide</b> (UNII: SOI2LOH54Z)	
<b>Silica Dimethyl Silylate</b> (UNII: EU2PSP0G0W)	
<b>Aluminum Hydroxide</b> (UNII: 5QB0T2IUN0)	
<b>Stearic Acid</b> (UNII: 4ELV7Z65AP)	
<b>Caprylyl Trisiloxane</b> (UNII: Q95M2P1KJL)	
<b>PEG-30 Dipolyhydroxystearate</b> (UNII: 9713Q0S7FO)	
<b>Ferrosoferric Oxide</b> (UNII: XM0M87F357)	
<b>Potassium Sorbate</b> (UNII: 1VPU26JZZ4)	
<b>Talc</b> (UNII: 7SEV7J4R1U)	
<b>Acmella Oleracea Flower</b> (UNII: 2794N5KM0K)	
<b>Rosa Multiflora Flower Wax</b> (UNII: VU148CEP2J)	
<b>Tocopherol</b> (UNII: R0ZB2556P8)	
<b>Ascorbyl Palmitate</b> (UNII: QN83US2B0N)	
<b>Pentaerythritol Tetrakis(3-(3,5-Di-Tert-Butyl-4-Hydroxyphenyl)Propionate)</b> (UNII: 255PIF62MS)	

### Product Characteristics

<b>Color</b>	BROWN (Bamboo 10)	<b>Score</b>	
<b>Shape</b>		<b>Size</b>	
<b>Flavor</b>		<b>Imprint Code</b>	
<b>Contains</b>			

### Packaging

#	Item Code	Package Description	Marketing Start Date	Marketing End Date
1	NDC:61601-1177-7	1 in 1 CARTON		
1		2 mL in 1 BOTTLE, PUMP		

### Marketing Information

Marketing Category	Application Number or Monograph Citation	Marketing Start Date	Marketing End Date
OTC MONOGRAPH NOT FINAL	part352	02/28/2014	

## EVE LOM RADIANCE LIFT FOUNDATION SPF 15

titanium dioxide and octinoxate cream

### Product Information

<b>Product Type</b>	HUMAN OTC DRUG	<b>Item Code (Source)</b>	NDC:61601-1181
<b>Route of Administration</b>	TOPICAL		

**Active Ingredient/Active Moiety**

Ingredient Name	Basis of Strength	Strength
<b>Titanium Dioxide</b> (UNII: 15FIX9V2JP) (Titanium Dioxide - UNII:15FIX9V2JP)	Titanium Dioxide	1.38 g in 30 mL
<b>Octinoxate</b> (UNII: 4Y5P7MUD51) (Octinoxate - UNII:4Y5P7MUD51)	Octinoxate	1.5 g in 30 mL

**Inactive Ingredients**

Ingredient Name	Strength
<b>Water</b> (UNII: 059QF0KO0R)	
<b>Dimethicone</b> (UNII: 92RU3N3Y1O)	
<b>Isododecane</b> (UNII: A8289P68Y2)	
<b>Mica</b> (UNII: V8A1AW0880)	
<b>Isononyl Isononanoate</b> (UNII: S4V5BS6GCX)	
<b>Trisiloxane</b> (UNII: 9G1ZW13R0G)	
<b>Ferric Oxide Yellow</b> (UNII: EX438O2MRT)	
<b>Medium-Chain Triglycerides</b> (UNII: C9H2L21V7U)	
<b>Cetearyl Ethylhexanoate</b> (UNII: 9M64UO4C25)	
<b>Glycerin</b> (UNII: PDC6A3C0OX)	
<b>Sorbitan Isostearate</b> (UNII: 01S2G2C1E4)	
<b>Disteardimonium Hectorite</b> (UNII: X687XDK09L)	
<b>Cetyl PEG/PPG-10/1 Dimethicone (HLB 3)</b> (UNII: G300307ZXP)	
<b>Butylene Glycol</b> (UNII: 3XUS85K0RA)	
<b>Edetate Sodium</b> (UNII: MP1J8420LU)	
<b>Ferric Oxide Red</b> (UNII: 1K09F3G675)	
<b>Phenoxyethanol</b> (UNII: HIE492ZZ3T)	
<b>Sodium Chloride</b> (UNII: 451W47IQ8X)	
<b>Alcohol</b> (UNII: 3K9958V90M)	
<b>Zinc Oxide</b> (UNII: SOI2LOH54Z)	
<b>Silica Dimethyl Silylate</b> (UNII: EU2PSP0G0W)	
<b>Aluminum Hydroxide</b> (UNII: 5QB0T2IUN0)	
<b>Stearic Acid</b> (UNII: 4ELV7Z65AP)	
<b>Caprylyl Trisiloxane</b> (UNII: Q95M2P1KJL)	
<b>PEG-30 Dipolyhydroxystearate</b> (UNII: 9713Q0S7FO)	
<b>Ferrosoferric Oxide</b> (UNII: XM0M87F357)	
<b>Potassium Sorbate</b> (UNII: 1VPU26JZZ4)	
<b>Talc</b> (UNII: 7SEV7J4R1U)	
<b>Acmella Oleracea Flower</b> (UNII: 2794N5KM0K)	
<b>Rosa Multiflora Flower Wax</b> (UNII: VU148CEP2J)	
<b>Tocopherol</b> (UNII: R0ZB2556P8)	
<b>Ascorbyl Palmitate</b> (UNII: QN83US2B0N)	
<b>Pentaerythritol Tetrakis(3-(3,5-Di-Tert-Butyl-4-Hydroxyphenyl)Propionate)</b> (UNII: 255PIF62MS)	

**Product Characteristics**

<b>Color</b>	WHITE (Alabaster 1)	<b>Score</b>	
<b>Shape</b>		<b>Size</b>	
<b>Flavor</b>		<b>Imprint Code</b>	
<b>Contains</b>			

## Packaging

#	Item Code	Package Description	Marketing Start Date	Marketing End Date
1	NDC:61601-1181-2	1 in 1 CARTON		
1		2 mL in 1 BOTTLE, PUMP		

## Marketing Information

Marketing Category	Application Number or Monograph Citation	Marketing Start Date	Marketing End Date
OTC MONOGRAPH NOT FINAL	part352	02/28/2014	

## EVE LOM RADIANCE LIFT FOUNDATION SPF 15

titanium dioxide and octinoxate cream

### Product Information

Product Type	HUMAN OTC DRUG	Item Code (Source)	NDC:61601-1182
Route of Administration	TOPICAL		

### Active Ingredient/Active Moiety

Ingredient Name	Basis of Strength	Strength
<b>Titanium Dioxide</b> (UNII: 15FIX9V2JP) (Titanium Dioxide - UNII:15FIX9V2JP)	Titanium Dioxide	1.38 g in 30 mL
<b>Octinoxate</b> (UNII: 4Y5P7MUD51) (Octinoxate - UNII:4Y5P7MUD51)	Octinoxate	1.5 g in 30 mL

### Inactive Ingredients

Ingredient Name	Strength
<b>Water</b> (UNII: 059QF0KO0R)	
<b>Dimethicone</b> (UNII: 92RU3N3Y1O)	
<b>Isododecane</b> (UNII: A8289P68Y2)	
<b>Mica</b> (UNII: V8A1AW0880)	
<b>Isononyl Isononanoate</b> (UNII: S4V5BS6GCX)	
<b>Trisiloxane</b> (UNII: 9G1ZW13R0G)	
<b>Ferric Oxide Yellow</b> (UNII: EX438O2MRT)	
<b>Medium-Chain Triglycerides</b> (UNII: C9H2L21V7U)	
<b>Cetearyl Ethylhexanoate</b> (UNII: 9M64UO4C25)	
<b>Glycerin</b> (UNII: PDC6A3C0OX)	
<b>Sorbitan Isostearate</b> (UNII: 01S2G2C1E4)	
<b>Disteardimonium Hectorite</b> (UNII: X687XDK09L)	
<b>Cetyl PEG/PPG-10/1 Dimethicone (HLB 3)</b> (UNII: G300307ZXP)	
<b>Butylene Glycol</b> (UNII: 3XUS85K0RA)	
<b>Edetate Sodium</b> (UNII: MP1J8420LU)	
<b>Ferric Oxide Red</b> (UNII: 1K09F3G675)	
<b>Phenoxyethanol</b> (UNII: HIE492ZZ3T)	
<b>Sodium Chloride</b> (UNII: 451W47IQ8X)	
<b>Alcohol</b> (UNII: 3K9958V90M)	

Zinc Oxide (UNII: SOI2LOH54Z)	
Silica Dimethyl Silylate (UNII: EU2PSP0G0W)	
Aluminum Hydroxide (UNII: 5QB0T2IUN0)	
Stearic Acid (UNII: 4ELV7Z65AP)	
Caprylyl Trisiloxane (UNII: Q95M2P1KJL)	
PEG-30 Dipolyhydroxystearate (UNII: 9713Q0S7FO)	
Ferrosulfate (UNII: XM0M87F357)	
Potassium Sorbate (UNII: 1VPU26JZZ4)	
Talc (UNII: 7SEV7J4R1U)	
Acmella Oleracea Flower (UNII: 2794N5KM0K)	
Rosa Multiflora Flower Wax (UNII: VU148CEP2J)	
Tocopherol (UNII: R0ZB2556P8)	
Ascorbyl Palmitate (UNII: QN83US2B0N)	
Pentaerythritol Tetraakis(3-(3,5-Di-Tert-Butyl-4-Hydroxyphenyl)Propionate) (UNII: 255PIF62MS)	

### Product Characteristics

Color	WHITE (Cream 6)	Score	
Shape		Size	
Flavor		Imprint Code	
Contains			

### Packaging

#	Item Code	Package Description	Marketing Start Date	Marketing End Date
1	NDC:61601-1182-9	1 in 1 CARTON		
1		2 mL in 1 BOTTLE, PUMP		

### Marketing Information

Marketing Category	Application Number or Monograph Citation	Marketing Start Date	Marketing End Date
OTC MONOGRAPH NOT FINAL	part352	02/28/2014	

## EVE LOM RADIANCE LIFT FOUNDATION SPF 15

titanium dioxide and octinoxate cream

### Product Information

Product Type	HUMAN OTC DRUG	Item Code (Source)	NDC:61601-1183
Route of Administration	TOPICAL		

### Active Ingredient/Active Moiety

Ingredient Name	Basis of Strength	Strength
Titanium Dioxide (UNII: 15FIX9V2JP) (Titanium Dioxide - UNII:15FIX9V2JP)	Titanium Dioxide	1.38 g in 30 mL
Octinoxate (UNII: 4Y5P7MUD51) (Octinoxate - UNII:4Y5P7MUD51)	Octinoxate	1.5 g in 30 mL

## Inactive Ingredients

Ingredient Name	Strength
<b>Water</b> (UNII: 059QF0KO0R)	
<b>Dimethicone</b> (UNII: 92RU3N3Y1O)	
<b>Isododecane</b> (UNII: A8289P68Y2)	
<b>Mica</b> (UNII: V8A1AW0880)	
<b>Isononyl Isononanoate</b> (UNII: S4V5BS6GCX)	
<b>Trisiloxane</b> (UNII: 9G1ZW13R0G)	
<b>Ferric Oxide Yellow</b> (UNII: EX438O2MRT)	
<b>Medium-Chain Triglycerides</b> (UNII: C9H2L21V7U)	
<b>Cetearyl Ethylhexanoate</b> (UNII: 9M64UO4C25)	
<b>Glycerin</b> (UNII: PDC6A3C0OX)	
<b>Sorbitan Isostearate</b> (UNII: 01S2G2C1E4)	
<b>Disteardimonium Hectorite</b> (UNII: X687XDK09L)	
<b>Cetyl PEG/PPG-10/1 Dimethicone (HLB 3)</b> (UNII: G300307ZXP)	
<b>Butylene Glycol</b> (UNII: 3XUS85K0RA)	
<b>Edetate Sodium</b> (UNII: MP1J8420LU)	
<b>Ferric Oxide Red</b> (UNII: 1K09F3G675)	
<b>Phenoxyethanol</b> (UNII: HIE492ZZ3T)	
<b>Sodium Chloride</b> (UNII: 451W47IQ8X)	
<b>Alcohol</b> (UNII: 3K9958V90M)	
<b>Zinc Oxide</b> (UNII: SOI2LOH54Z)	
<b>Silica Dimethyl Silylate</b> (UNII: EU2PSP0G0W)	
<b>Aluminum Hydroxide</b> (UNII: 5QB0T2IUN0)	
<b>Stearic Acid</b> (UNII: 4ELV7Z65AP)	
<b>Caprylyl Trisiloxane</b> (UNII: Q95M2P1KJL)	
<b>PEG-30 Dipolyhydroxystearate</b> (UNII: 9713Q0S7FO)	
<b>Ferrosferric Oxide</b> (UNII: XM0M87F357)	
<b>Potassium Sorbate</b> (UNII: 1VPU26JZZ4)	
<b>Talc</b> (UNII: 7SEV7J4R1U)	
<b>Acmella Oleracea Flower</b> (UNII: 2794N5KM0K)	
<b>Rosa Multiflora Flower Wax</b> (UNII: VU148CEP2J)	
<b>Tocopherol</b> (UNII: R0ZB2556P8)	
<b>Ascorbyl Palmitate</b> (UNII: QN83US2B0N)	
<b>Pentaerythritol Tetraakis(3-(3,5-Di-Tert-Butyl-4-Hydroxyphenyl)Propionate)</b> (UNII: 255PIF62MS)	

## Product Characteristics

<b>Color</b>	BROWN (Honey 12)	<b>Score</b>	
<b>Shape</b>		<b>Size</b>	
<b>Flavor</b>		<b>Imprint Code</b>	
<b>Contains</b>			

## Packaging

#	Item Code	Package Description	Marketing Start Date	Marketing End Date
1	NDC:61601-1183-4	1 in 1 CARTON		
1		2 mL in 1 BOTTLE, PUMP		



## Marketing Information

Marketing Category	Application Number or Monograph Citation	Marketing Start Date	Marketing End Date
OTC MONOGRAPH NOT FINAL	part352	02/28/2014	

**Labeler** - Space Brands Limited (218214381)

## Establishment

Name	Address	ID/FEI	Business Operations
Intercos Europe S.p.A.		438961310	MANUFACTURE(61601-1136, 61601-1137, 61601-1138, 61601-1175, 61601-1176, 61601-1177, 61601-1181, 61601-1182, 61601-1183)

Revised: 2/2014

Space Brands Limited