

CREST 3D WHITE- sodium fluoride paste, dentifrice
The Procter & Gamble Manufacturing Company

Crest[®] 3D White[®]

Drug Facts

Active ingredient

Sodium fluoride 0.243% (0.15% w/v fluoride ion)

Purpose

Anticavity toothpaste

Use

helps protect against cavities

Warning

Keep out of reach of children under 6 yrs. of age. If more than used for brushing is accidentally swallowed, get medical help or contact a Poison Control Center right away.

Directions

- adults and children 2 yrs. & older: brush teeth thoroughly after meals or at least twice a day or use as directed by a dentist
 - do not swallow
 - to minimize swallowing use a pea-sized amount in children under 6
 - supervise children's brushing until good habits are established
- children under 2 yrs.: ask a dentist

Inactive ingredients

water, sorbitol, hydrated silica, disodium pyrophosphate, xylitol, flavor, sodium hydroxide, cellulose gum, cocamidopropyl betaine, sodium laureth-2 phosphate, sodium saccharin, xanthan gum, carbomer, sucralose, PEG-20M or PEG-23M, polyethylene, mica, titanium dioxide, blue 1 lake, yellow 10 lake, iron oxides

Questions?

1-800-492-7378

Dist. by Procter & Gamble,
Cincinnati, OH 45202

PRINCIPAL DISPLAY PANEL - 116 g Tube Carton

Crest®

3D WHITE®

FLUORIDE ANTICAVITY TOOTHPASTE
WITH ILLUMINATING COMPLEX

NET WT 4.1 OZ (116 g)

**OUR MOST ADVANCED WHITENING
MEETS ADVANCED FRESHNESS**

BRILLIANCE

WHITER, DAZZLING SMILE

ENAMEL SAFE WHITENING
MESMERIZING MINT

Drug Facts**Active ingredient**Sodium fluoride 0.243%
(0.15% w/v fluoride ion)**Purpose**Anticavity
toothpaste**Use** helps protect against cavities**Warning**

Keep out of reach of children under 6 yrs. of age. If more than used for brushing is accidentally swallowed, get medical help or contact a Poison Control Center right away.

Directions

- adults and children 2 yrs. & older: brush teeth thoroughly after meals or at least twice a day or use as directed by a dentist
- do not swallow
- to minimize swallowing use a pea-sized amount in children under 6
- supervise children's brushing until good habits

Drug Facts (continued)

- are established
- children under 2 yrs.: ask a dentist

Inactive ingredients water, sorbitol, hydrated silica, disodium pyrophosphate, xylitol, flavor, sodium hydroxide, cellulose gum, cocamidopropyl betaine, sodium laureth-2 phosphate, sodium saccharin, xanthan gum, carbomer, sucralose, PEG-20M or PEG-23M, polyethylene, mica, titanium dioxide, blue 1 lake, yellow 10 lake, iron oxides**Questions?** 1-800-492-7378**Satisfaction Guaranteed**

Crest 3D White will provide you with a whiter smile – guaranteed. If you are not satisfied with your results, Crest 3D White will refund your purchase. Simply return your receipt and package UPC within 60 days of purchase. Limit to one refund per person. Call 1-800-208-0169 for more information.

Dist. by Procter & Gamble,
Cincinnati, OH 45202
www.crest.com Patents:
www.pg.com/patents © 2014 P&G**3D Crest**
WHITEFLUORIDE ANTICAVITY TOOTHPASTE
WITH ILLUMINATING COMPLEX

NET WT 4.1 OZ (116 g)

OUR MOST ADVANCED WHITENING
MEETS ADVANCED FRESHNESS**BRILLIANCE**

WHITER, DAZZLING SMILE

ENAMEL SAFE WHITENING

MESMERIZING MINT

3D Crest
WHITEFLUORIDE ANTICAVITY TOOTHPASTE
WITH ILLUMINATING COMPLEX

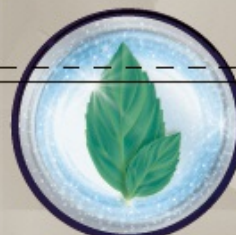
NET WT 4.1 OZ (116 g)

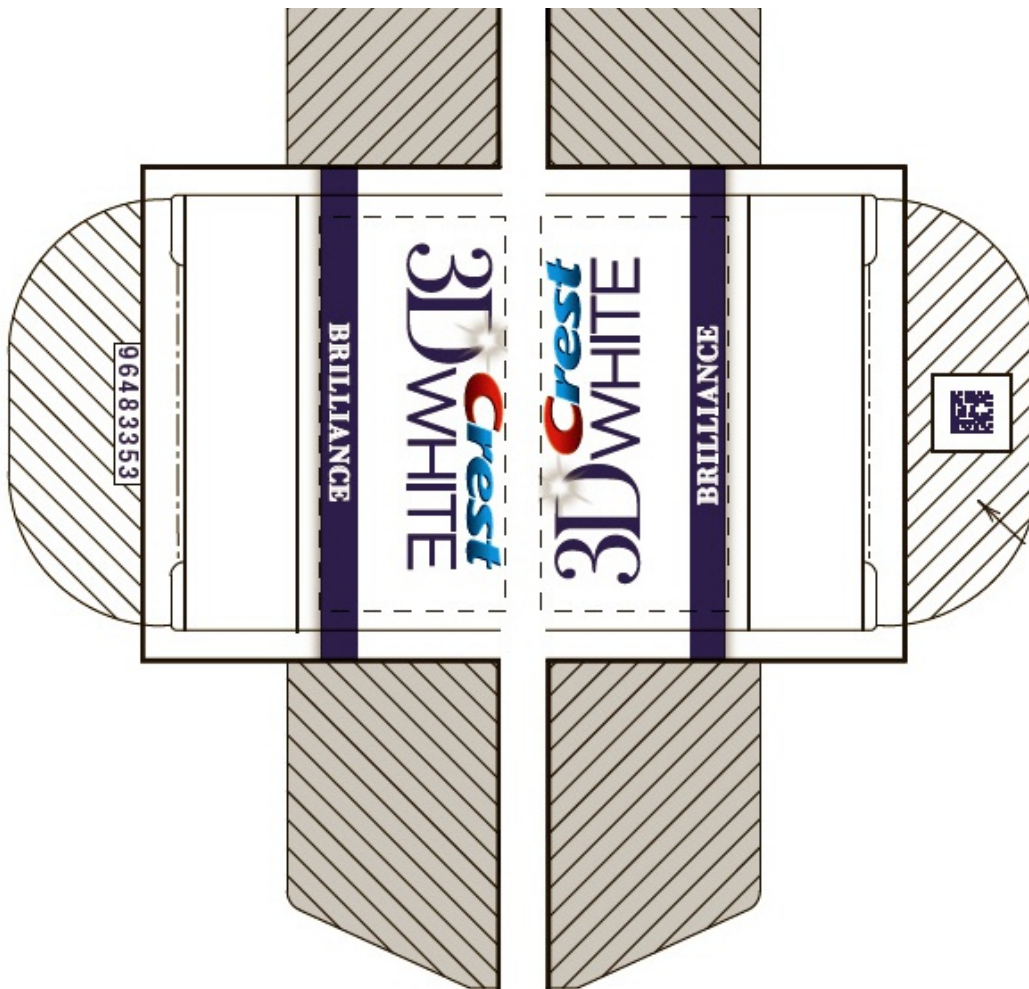
OUR MOST ADVANCED WHITENING
MEETS ADVANCED FRESHNESS**BRILLIANCE**

WHITER, DAZZLING SMILE

ENAMEL SAFE WHITENING

MESMERIZING MINT

ILLUMINATING COMPLEX:**3D Crest**
WHITE
BRILLIANCEWhitens by unlocking
trapped surface stains.Adds luster & shine
after just 1 use.Freshens with a lasting
cooling sensation.



CREST 3D WHITE

sodium fluoride paste, dentifrice

Product Information

Product Type	HUMAN OTC DRUG	Item Code (Source)	NDC:37000-853
Route of Administration	DENTAL		

Active Ingredient/Active Moiety

Ingredient Name	Basis of Strength	Strength
SODIUM FLUORIDE (UNII: 8ZYQ1474W7) (FLUORIDE ION - UNII:Q80VPU408O)	FLUORIDE ION	1.5 mg in 1 g

Inactive Ingredients

Ingredient Name	Strength
WATER (UNII: 059QF0KO0R)	
SORBITOL (UNII: 506T60A25R)	
HYDRATED SILICA (UNII: Y6O7T4G8P9)	
SODIUM ACID PYROPHOSPHATE (UNII: H5WWD9LZUD)	
XYLITOL (UNII: VCQ006KQ1E)	

SODIUM HYDROXIDE (UNII: 55X04QC32I)	
CARBOXYMETHYLCELLULOSE SODIUM (UNII: K679OBS311)	
COCAMIDOPROPYL BETAINE (UNII: 5OCF3O11KX)	
SODIUM LAURETH-2 PHOSPHATE (UNII: 1IO8CC3XDG)	
SACCHARIN SODIUM (UNII: SB8ZUX40TY)	
XANTHAN GUM (UNII: TTV12P4NEE)	
SUCRALOSE (UNII: 96K6UQ3ZD4)	
POLYETHYLENE GLYCOL 900000 (UNII: 16P9295IIL)	
POLYETHYLENE GLYCOL 1000000 (UNII: HZ58M6D839)	
HIGH DENSITY POLYETHYLENE (UNII: UG00KM4WR7)	
MICA (UNII: V8A1AW0880)	
TITANIUM DIOXIDE (UNII: 15FIX9V2JP)	
FD&C BLUE NO. 1 (UNII: H3R47K3TBD)	
ALUMINUM OXIDE (UNII: LMI26O6933)	
D&C YELLOW NO. 10 (UNII: 35SW5USQ3G)	
FERRIC OXIDE RED (UNII: 1K09F3G675)	

Product Characteristics

Color	white (w/teal gel stripe)	Score	
Shape		Size	
Flavor	SPEARMINT	Imprint Code	
Contains			

Packaging

#	Item Code	Package Description	Marketing Start Date	Marketing End Date
1	NDC:37000-853-04	1 in 1 CARTON	02/04/2014	
1		116 g in 1 TUBE; Type 0: Not a Combination Product		
2	NDC:37000-853-08	2 in 1 CELLO PACK	02/04/2014	
2		1 in 1 CARTON		
2		116 g in 1 TUBE; Type 0: Not a Combination Product		
3	NDC:37000-853-85	1 in 1 CARTON	02/04/2014	
3		24 g in 1 TUBE; Type 0: Not a Combination Product		
4	NDC:37000-853-83	3 in 1 CELLO PACK	02/04/2014	06/19/2019
4		1 in 1 CARTON		
4		116 g in 1 TUBE; Type 0: Not a Combination Product		

Marketing Information

Marketing Category	Application Number or Monograph Citation	Marketing Start Date	Marketing End Date
OTC Monograph Drug	M021	02/04/2014	

Labeler - The Procter & Gamble Manufacturing Company (004238200)

Revised: 1/2025

The Procter & Gamble Manufacturing Company