

SHANGHAI SHANG SHI ZHI TONG GAO PAIN RELIEVING- camphor, menthol, methyl salicylate patch

SHANGHAI LEI YUN SHANG PHARMACEUTICAL CO LTD

Disclaimer: Most OTC drugs are not reviewed and approved by FDA, however they may be marketed if they comply with applicable regulations and policies. FDA has not evaluated whether this product complies.

Drug Facts

Active ingredients

Camphor 10%

Menthol 10.28%

Methyl salicylate 15.43%

Purpose

External analgesic

Uses

For the temporary relief of minor aches and pains of muscles and joints due to:

simple backache

arthritis

strains

bruises

sprains

Warnings

For external use only

Allergy alert: This product contains natural rubber latex which may cause allergic reactions

Do not use

on wounds

on irritated or damaged skin

if pregnant

otherwise than as directed

When using this product

avoid contact with the eyes or mucous membranes

do not bandage tightly

Stop use and ask a doctor if

condition worsens

symptoms persist for more than 7 days

symptoms clear up and occur again within a few days

excessive irritation of the skin develops

nausea, vomiting, abdominal discomfort, diarrhea, or skin rash occurs

when using for pain of arthritis:

 pain persists for more than 10 days

 redness is present

in conditions affecting children under 12 years of age

Keep out of reach of children to avoid accidental poisoning. If swallowed, get medical help or contact a Poison Control Center right away.

Directions

adults and children 3 years of age and older: clean and dry the skin and apply the patch to the affected area not than 3 to 4 times daily. Each patch is effective for 2-3 days.

children under 3 years of age: consult your physician.

refer to the above warnings; use otherwise than as directed may be dangerous.

Other information

for unused patches remaining in the pouch, re-seal securely
store at room temperature

Inactive ingredientsCinnamon, clove extract, drynaria root and stem, fang feng root, fragrant angelica root, frankincense resin, geranium (*Geranium wilfordii* Maxim) stem, leaf, and fruit, glycerol ester of rosin gum, gotu kola herb, greater galangal root and stem, kaolin, lanolin, lithopone (mixture of barium sulfate, zinc sulfide, and trace zinc oxide), mineral oil, myrrh, oriental sweet gum (*Liquidambar orientalis* Mill.) resin, paraffin, periploca sepium (*Periploca sepium* Bunge) bark, petrolatum, schizonepeta [*Schizonepeta tenuifolia* (Benth.) Briq.] stem and leaf, on a rubberized fabric backing covered with a protective paper sheet.

Questions or comments? (888) 221-3496 M-F 9 am to 5 pm
you may also report serious side effects to thi phone number

SHANGHAI SHANG SHI ZHI TONG GAO

Pain Relieving Patch

External Analgesic

NDC 22742-003-01

6 Patches in 3 Pouches Each Patch 2.75 in x 3.94 in (7 cm x 10 cm)

雷氏
SHANGHAI
SHANG SHI ZHI TONG GAO

Manufactured by 製造商:
Shanghai Lei Yun Shang
Pharmaceutical Co., Ltd.
上海雷允上藥業有限公司
Shanghai, China

U.S. Distributor 美國總代理:
SOLSTICE MEDICINE COMPANY
215 West Ann Street,
Los Angeles, CA 90012
Tel: (888) 221-3496
WWW.SOLSTICEMED.COM

Drug Facts (continued)

Directions
 ■ adults and children 3 years of age and older:
 clean and dry the skin and apply the patch to the
 affected area not more than 3 to 4 times daily. Each
 patch is effective for 2-3 days.
 ■ children under 3 years of age: consult your physician.
 ■ refer to the above warnings; use otherwise than as
 directed may be dangerous

Other information
 ■ for unused patches remaining in the pouch, re-seal
 securely.
 ■ store at room temperature

Inactive ingredients
 Cinnamon, clove extract,
 drynaria root and stem, fang feng root, fragrant angelica
 root, frankincense resin, geranium (Geranium willfordii
 Maxim) stem, leaf, and fruit, glycerol ester of rosin gum,
 gotu kola herb, greater galangal root and stem, kaolin,
 lanolin, lithopone (mixture of barium sulfate, zinc sulfide,
 and trace zinc oxide), mineral oil, myrrh, oriental sweet
 gum (Liquidambar orientalis Mill.) resin, paraffin, petrolatum,
 sepium (Periploca sepium Bunge) bark, petrolatum,
 schizonepeta [Schizonepeta tenuifolia (Benth.) Brq.]
 stem and leaf, on a rubberized fabric backing covered
 with a protective paper sheet.

Questions or comments?
 (888) 221-3496 M-F 9 am to 5 pm
 ■ you may also report serious side effects to this
 phone number.

Drug Facts

Active Ingredients
 Camphor 10% External Analgesic
 Menthol 0.28% External Analgesic
 Methyl salicylate 15.43% External Analgesic

Purpose
 For the temporary relief of minor aches and
 pains of muscles and joints due to: ■ simple backache
 ■ arthritis ■ strains ■ bruises ■ sprains

Warnings For external use only
 Allergy alert: This product contains natural rubber
 latex which may cause allergic reactions
Do not use ■ on wounds ■ on irritated or damaged skin
 ■ if pregnant ■ otherwise than as directed

When using this product
 ■ avoid contact with the eyes or mucous membranes
 ■ do not bandage tightly

Stop use and ask a doctor if
 ■ condition worsens
 ■ symptoms persist for more than 7 days
 ■ symptoms clear up and occur again within a few days
 ■ excessive irritation of the skin develops
 ■ nausea, vomiting, abdominal discomfort, diarrhea, or
 skin rash occurs
 ■ when using for pain of arthritis:
 ■ pain persists for more than 10 days
 ■ pedress is present
 ■ in conditions affecting children under 12 years of age

Keep out of reach of children to avoid accidental
 poisoning. If swallowed, get medical help or contact a
 Poison Control Center right away.

Lot No.:
Exp Date:

Made in China 中國製造



External Analgesic

NDC 22742-003-01



上海 傷濕止痛膏

SHANGHAI
SHANG SHI ZHI TONG GAO

Pain Relieving Patch



新劑型
配方

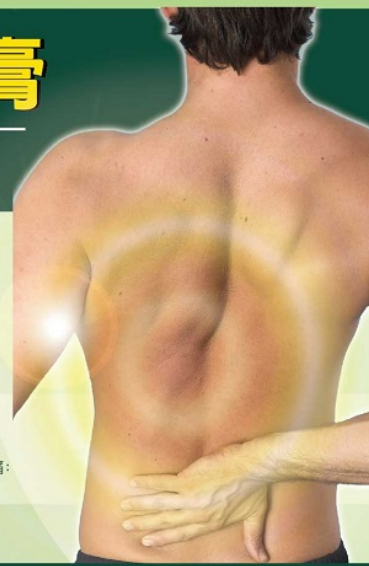
For the temporary relief of minor aches and pains of muscles
and joints due to:

■ Simple backache ■ Arthritis ■ Strains ■ Bruises ■ Sprains

外用解痛膏藥作用：暫時緩解因下列症狀引起的肌肉和關節的輕微疼痛：

■ 一般腰背痛 ■ 關節炎 ■ 瘀傷 ■ 損傷 ■ 扭傷

6 Patches in 3 pouches (3袋6貼裝)
2.75 in x 3.94 in (7 cm x 10 cm)



上海雷允上藥業有限公司

Shanghai Lei Yun Shang Phar. Co., Ltd.

雷氏
傷濕止痛膏

上海



SHANGHAI SHANG SHI ZHI TONG GAO PAIN RELIEVING

camphor, menthol, methyl salicylate patch

Product Information

Product Type	HUMAN OTC DRUG	Item Code (Source)	NDC:22742-003
Route of Administration	TOPICAL		

Active Ingredient/Active Moiety

Ingredient Name	Basis of Strength	Strength
CAMPHOR (SYNTHETIC) (UNII: 5TJD82A1ET) (CAMPHOR (SYNTHETIC) - UNII:5TJD82A1ET)	CAMPHOR (SYNTHETIC)	10
MENTHOL (UNII: L7T10EIP3A) (MENTHOL - UNII:L7T10EIP3A)	MENTHOL	10.28
METHYL SALICYLATE (UNII: LAV5U5022Y) (SALICYLIC ACID - UNII:O414PZ4LPZ)	METHYL SALICYLATE	15.43

Inactive Ingredients

Ingredient Name	Strength
CINNAMON (UNII: 5S29HWU6QB)	
CLOVE (UNII: K48IKT5321)	
DRYNARIA FORTUNEI ROOT (UNII: 731W842X8Q)	
SAPOSHNIKO VIA DIVARICATA ROOT (UNII: 8H84LFK2QD)	
ANGELICA DAHURICA ROOT (UNII: 1V63N2S972)	
FRANKINCENSE (UNII: R9XLF1R1WM)	
GERANIUM WILFORDII WHOLE (UNII: QXI974Y72W)	
ROSIN PARTIALLY DIMERIZED GLYCEROL ESTER (UNII: BY866DXY67)	
CENTELLA ASIATICA (UNII: 7M867G6T1U)	
ALPINIA GALANGA WHOLE (UNII: 3S1W839C0O)	
KAOLIN (UNII: 24H4NWX5CO)	
LANOLIN (UNII: 7EV65EAW6H)	
BARIUM SULFATE (UNII: 25BB7EKE2E)	
ZINC SULFIDE (UNII: KPS085631O)	
ZINC OXIDE (UNII: SOI2LOH54Z)	
MINERAL OIL (UNII: T5L8T28FGP)	
MYRRH (UNII: JC71GJ1F3L)	
LIQUIDAMBAR ORIENTALIS WHOLE (UNII: 759QNU787E)	
PARAFFIN (UNII: I9O0E3H2ZE)	
PERIPOCA SEPIUM ROOT BARK (UNII: 638OW484M3)	
PETROLATUM (UNII: 4T6H12BN9U)	
SCHIZONEPETA TENUIFOLIA WHOLE (UNII: C1107616TR)	

Packaging

#	Item Code	Package Description	Marketing Start Date	Marketing End Date
1	NDC:22742-003-01	3 in 1 BOX	03/09/2009	
1		2 in 1 POUCH; Type 0: Not a Combination Product		

Marketing Information

Marketing Category	Application Number or Monograph Citation	Marketing Start Date	Marketing End Date
OTC monograph not final	part348	03/09/2009	

Labeler - SHANGHAI LEI YUN SHANG PHARMACEUTICAL CO LTD (420978637)

Registrant - SHANGHAI LEI YUN SHANG PHARMACEUTICAL CO LTD (420978637)

Establishment

Name	Address	ID/FEI	Business Operations
SHANGHAI LEI YUN SHANG PHARMACEUTICAL CO LTD		420978637	manufacture(22742-003)

Revised: 11/2019

SHANGHAI LEI YUN SHANG PHARMACEUTICAL CO LTD